



---

---

## Micca Speck G2 User's Manual



### ***Got a Question or Need Help?***

Email our technical support team at: [support@miccatron.com](mailto:support@miccatron.com) for personalized assistance with the setup and use of this product. Please visit our product information website [www.miccatron.com](http://www.miccatron.com) for the following:

- Firmware Updates
- User's Manuals
- Troubleshooting Wizard
- Technical Support Request

When contacting technical support, be sure to include your order information, product model, and serial number from the bottom of the player.

Copyright © 2009-2013 Micca, Ltd. All rights reserved.  
This manual may not be reproduced in whole or in part without  
permission for any purpose other than personal use.

## **IMPORTANT!**

For your personal safety, please read the following instructions carefully.

- To reduce the risk of fire, electrical shock or damage to the player, do not expose this device to humidity, rain, sand or excessive heat (caused by heating equipment or direct sunlight).
- Use the player in a well-ventilated environment to ensure proper cooling.
- Do not open the player as this voids the warranty and may damage the player. Contact a professional for repair.
- Please follow the instructions enclosed with the player for key operation and maintenance.

### **Usage Notice**

- Before plugging in this device, make sure your power supply voltage matches the product. The working voltage of this player is marked on the AC power adapter. Only use the AC power adapter that is supplied with this device.
- Do not touch the socket with a wet hand.
- Turn off the power when the device will not be used.
- Do not place heavy objects on top of the player.
- Do not use strong solvents to clean the surface of the player such as alcohol, benzene, or thinner.

## **I. General Introduction**

### **Thank you for purchasing a Micca product.**

The Micca Speck is an ultra-portable 1080p Full-HD digital media player. It is capable of playing digital videos, music and pictures from SD/SDHC flash cards and USB 2.0 compliant storage devices such as USB drives and portable hard disk drives. The Micca Speck supports a wide range of media file formats, allowing its users to enjoy digital contents on the go or in the comfort of his or her living room.

#### **Auto Playback and Auto Looping**

The Micca Speck's automatic playback features makes it so easy to play and loop media files, you'll never have to manually start playback again. Just plug in a USB drive with one or more videos, turn the player on, and the videos will begin playing automatically and continuously in a loop until the player is turned off.

#### **One Device to Store All Your Media Files**

The Micca Speck along with a portable USB hard drive makes an ideal storage for your media files. With playback quality as good as that of a computer, you will never need to spend time copying large files back and forth between computers. Just take the Micca Speck to wherever you may have a TV or monitor and enjoy!

#### **Perfect For Travel**

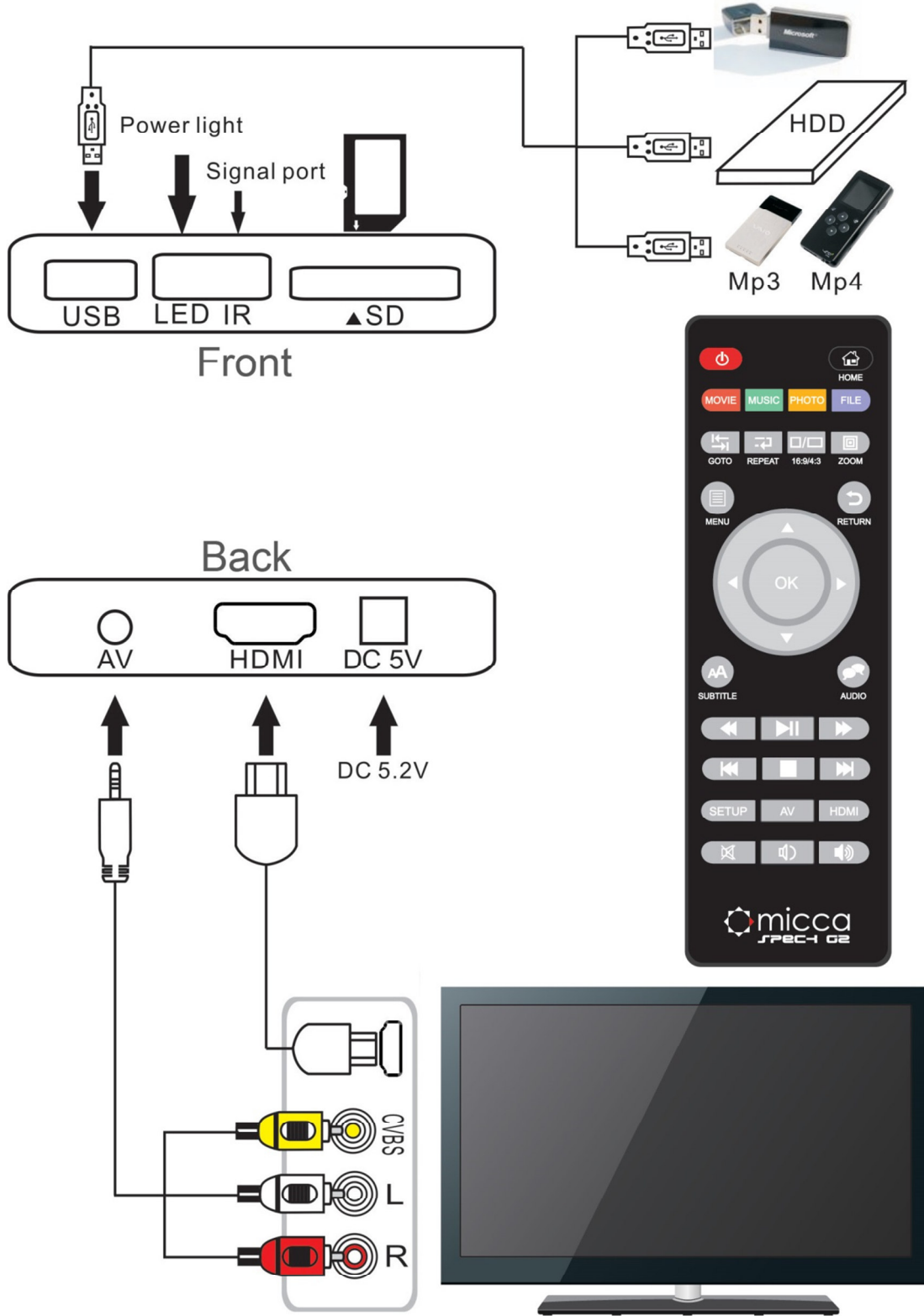
The Micca Speck is your perfect travel companion. Take your media files with you on a business trip and playback wherever you can find a TV or computer monitor, from showing customers a product showcase video, to catching up on missed shows the comfort of your hotel room. Take the Micca Speck along on a road trip and you'll never run out of videos to play back to the kids.

## II. Features and Specifications

The Micca Speck is a powerful digital media player, with the ability to decode high quality 1080p Full-HD videos. While actual performance can vary depending on the media file, this table of specifications is a summary of the Micca Speck's capabilities.

	Codec	Max resolution	Max stream	Max frames
Video	MPEG1	1920x1080	100mbps	30fps
	MPEG2		100mbps	
	MPEG4-XVID		100mbps	
	DIVX		100mbps	
	H.264		70mbps	
	H.263		100mbps	
	WMV9/VC1		100mbps	
	RMVB	1280x720	30mbps	
Files: MKV, AVI, TS/TP, MP4/M4V, MOV, VOB, PMP, RM/RMVB, MPG, M2TS, WMV				
Music	Bit rate: 32kbps – 320kbps			
	Formats: MP3, WMA, OGG, FLAC, APE, AAC			
Photo	Formats: JPG, JPEG, BMP, GIF, PNG			
Video Output	Analog AV: 720x576 (PAL), 720x480 (NTSC)			
	HDMI: 720p (50Hz/60Hz), 1080i (50Hz/60Hz), 1080p (50Hz/60Hz)			
Audio Output	Analog Stereo audio output level: 2.0V ± 0.2Vp Frequency Range: 20Hz-20KHz ±2dB SNR: >80dB (1kHz 0dB) Dynamic range: >80dB (1kHz 0dB) THD: ≤0.04%			
	HDMI PCM Digital Stereo			
External Storage	Supports USB2.0 drives up to 2TB with MBR partition table and NTFS or FAT32 file system, including USB hard drives and USB flash drives.			
	Supports all SD and SDHC flash memory cards with NTFS or FAT32 file system			
Product Size	2.5"(W) x 3"(L) x 0.6"(H)			
Weight	3 ounce			
Power	AC 90-230V, 50/60Hz, DC 5.2V 2A			
Packing List	AC Power Adapter, Remote Control, AV Cable, User's Manual			

### III. Product Layout and Connections



## **A. Power**

Only use the supplied AC power adapter to provide 5.0-5.2VDC power to the Micca Speck. Using a different power adapter may damage the player. Do not cut off power to the device while the unit is turned on as this may cause serious damage to the hard drive and result in data loss. Make sure that the player is in standby mode before disconnecting power. The player consumes a small amount of power in standby and should be disconnected from power to conserve energy if not planned to use for a while.

## **B. Analog AV Output**

The Micca Speck can be connected to analog TVs and display devices through its AV Out connector. Only use the supplied 3.5mm-to-RCA cable to ensure correct signal polarity and avoid damage to the player and TV/display. The RCA cable connectors are color coded to match the AV input on TVs and display devices as follows:


<b>Red</b>	Right Audio Channel
<b>White</b>	Left Audio Channel
<b>Yellow</b>	Composite Video

The Micca Speck's video output mode must be set to NTSC or PAL for the analog AV output to function. If there is no picture or the picture is distorted after connecting the AV Output, press the **<AV>** button on the remote to set the player's video output mode to NTSC. If PAL output mode is needed, use the settings menu to change the player's video output mode to PAL.

 *NTSC is compatible with all TV's in the US. PAL is used for TVs in certain countries in Europe, Asia, and others.*

## **C. HDMI Output**

The Micca Speck can be connected to HDTVs and digital display devices through its HDMI connector, sending both audio and video signals over one cable. Only use HDMI cables that have been certified to be v1.3a or higher to ensure signal quality. The Micca Speck's HDMI output resolution can be set to 720p (50/60Hz) and 1080i/p (50/60Hz).

 *Do not plug/unplug the HDMI output with the power connected to the player. Doing so may damage the player.*

The Micca Speck must be set to a valid HDMI output mode for the HDMI connection to output a correct signal. If there is no picture or the picture is distorted after connecting the HDMI output, press the **<HDMI>** button on the remote to set the player's output mode to 720p. Other HDMI display modes can then be set through the Setting menu.

#### ***D. Auto Detect AV Output***

The HDMI and AV outputs cannot be used at the same time. By default, the Micca Speck is configured to automatically detect the optimal AV output to use. If an HDMI connection is detected when the player is turned on, the player set its video output mode to HDMI. If HDMI connection is not detected, but an AV connection is detected, the player will automatically set its video output mode to AV.

This auto output detection feature can be disabled by setting "Auto HDMI Detect" to "OFF" in the settings menu. When the auto detection is turned off, the player will only use the video output mode that is configured in the settings menu. The video output mode can still be changed using the **<AV>** and **<HDMI>** buttons on the remote control.

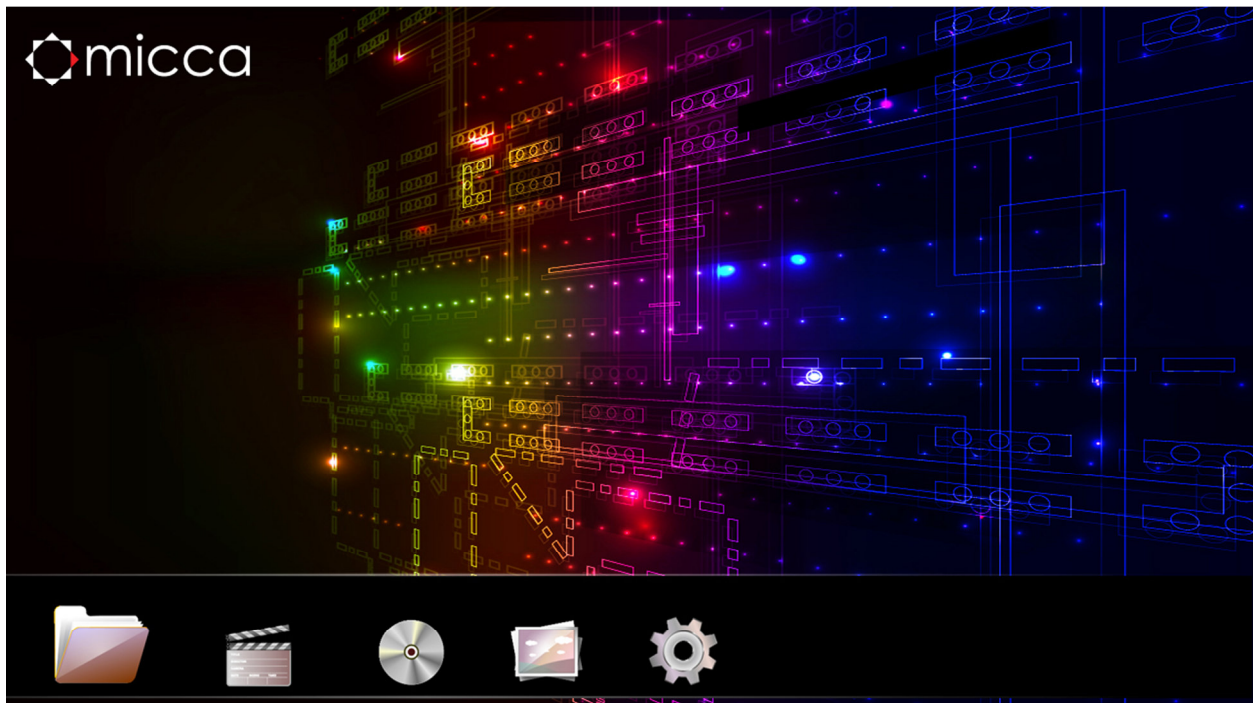
## IV. Micca Speck Startup

After powering on, the Micca Speck displays the **Home** menu screen. The **Home** menu presents five icons for access to different types of media files or settings:

<b>Files</b>	Browse and play all compatible file types.
<b>Music</b>	Browse and playback compatible audio files.
<b>Movies</b>	Browse and playback compatible video files.
<b>Photos</b>	Browse and display compatible image files.
<b>Setting</b>	System settings.

Use the <◀> and <▶> buttons on the remote to highlight the desired media type and press the <OK> button to select it. Refer to sections for individual media types for additional information.

*Use the <File>, <Photo>, <Music>, and <Movie> buttons on the remote to quickly select a browsing method from the home menu.*

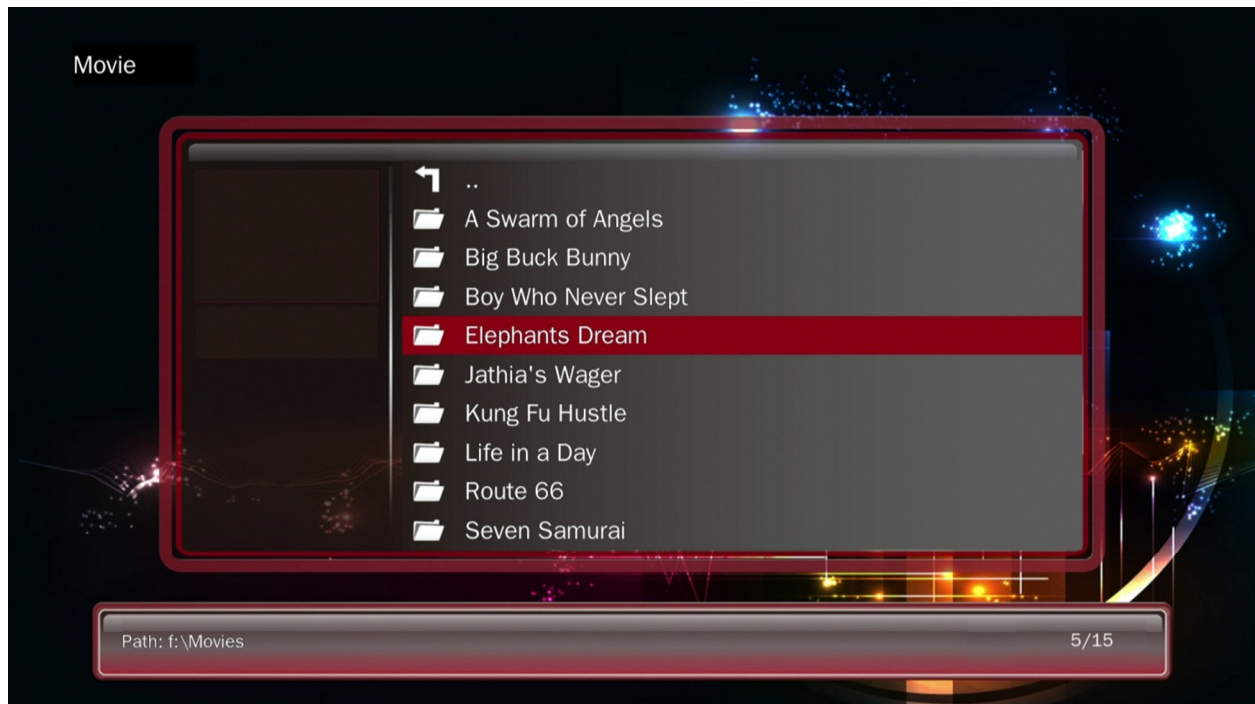




## V. Playing Movies and Videos

To browse and view movies and videos:

1. From the home menu, select the **Movies** icon and press **<OK>** on the remote to begin browsing for movies.
2. Select which storage device to browse for movies in: USB Drive, Memory Card, and Optical Drive. Highlight the desired device and press **<OK>**.
3. Select which partition of the drive to browse for movies in. Most drives have only one partition. Highlight the appropriate partition and press **<OK>**.
4. All folders and compatible movie files found will be displayed. If no folders or compatible movie files are found, a message will pop up indicating "No Compatible Files Found!"
5. To browse thin a folder, highlight the folder and press **<OK>**. To back out of a folder, press the **<RETURN>** on the remote.
6. To play a movie, highlight the movie and press **<OK>**.



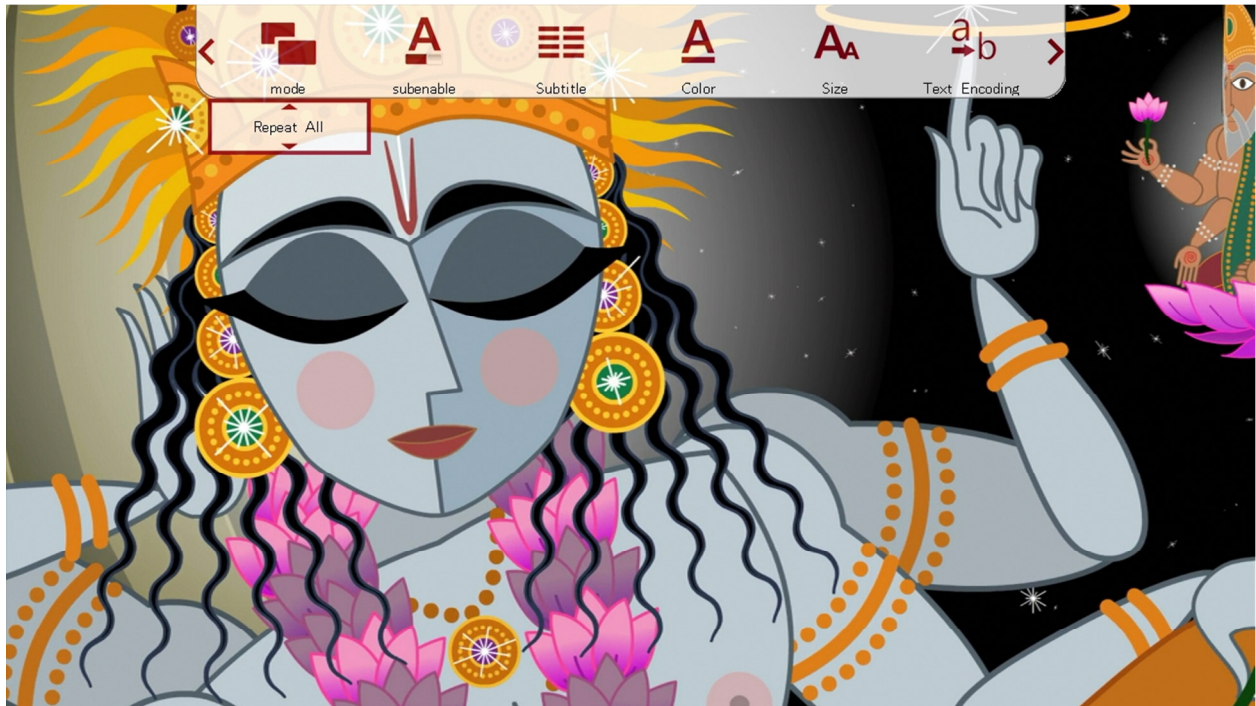
**NOTE:** Only files with compatible video file extensions MKV, AVI, TS/TP, MP4/M4V, MOV, VOB, PMP, RM/RMVB, MPG, M2TS, and WMV are visible in the file/folder

directory. Video files with incompatible file extensions will not be visible. Video files with compatible file extensions but incompatible codec will generate an error when played.

During playback of a movie, the following remote control operations are available:

Button	Description
<b>MUTE</b>	Mute all sound output.
<b>MENU</b>	Bring up the on-screen menu.
<b>◀◀</b>	Rewind - Available speeds are 1x, 2x, 4x, 8x.
<b>▶▶</b>	Fast Forward - Available speeds are 1x, 2x, 4x, 8x.
<b>◀◀</b>	Previous File - Play the previous file.
<b>▶▶</b>	Next File - Play the next file.
<b>  </b>	Play/Pause - Pause or resume the current file.
<b>■</b>	Stop playing the current file.
<b>OK</b>	Play/Pause - Pause or resume the current file.
<b>HOME</b>	Go back to the home menu.
<b>RETURN</b>	Stop playing the current file.
<b>16:9/4:3</b>	Aspect Ratio - Available modes are Default, 4:3, 16:9, Fit View, Video Full Screen, Screen Full Screen.
<b>GOTO</b>	Jump to a specific time in the video; use the arrow buttons to enter the time and press <b>&lt;OK&gt;</b> to jump to the entered time.
<b>REPEAT</b>	Changes video playback sequence between Repeat All, Repeat One, Random.
<b>AUDIO</b>	Change the audio track, if multiple audio tracks are available.
<b>SUBTITLE</b>	Turns subtitles on or off. Use the on-screen menu to change subtitle track.
<b>VOLUME</b>	Adjust the audio volume.

## A. On-Screen Menu



During playback of a movie, the on-screen menu offers a convenient way to access many frequently used playback settings. To use the on-screen menu, press the **<MENU>** button on the remote while a movie is playing.

To change a playback setting, use the **<◀>** and **<▶>** buttons on the remote to highlight the setting; use the up and down buttons to change the settings value and press **<OK>** to save the present setting. When finished, press the **<RETURN>** button to exit out of the on-screen menu.

Setting	Description
<b>Mode</b>	Change the playback sequence between Repeat One, Repeat All, Sequential, Random, Only Once.
<b>Sub Enable</b>	Enable or disable subtitle display.
<b>Subtitle</b>	Change the subtitle track being displayed.
<b>Color</b>	Change the subtitle text color between White, Gray, Red, Green, Cyan, Magenta, Yellow.

<b>Size</b>	Change the subtitle text size.
<b>Text Encoding</b>	Change the subtitle text encoding between S-Chinese (GBK), T-Chinese (BIG5), UTF-8, UTF-16BE, UTF-16LE, Japanese (S-JIS), Western, SE European, Turkish, Central European, Cyrillic, Hebrew, Greek, CP1252, Arabic (CP1256), ISO 8859-6, Korean (EUC-KR), Thai.
<b>Time Sync</b>	Change the time sync between the subtitle and the video.

### ***B. Aspect Ratio***

For a video to be displayed correctly, it must be played back at with the appropriate aspect ratio. An incorrect aspect ratio will result in a distorted image. The aspect ratio can be changed while a video is playing by pressing the **<16:9/4:3>** button on the remote. The following aspect ratio settings are available.

<b>Setting</b>	<b>Description</b>
<b>Default</b>	The video will be played as-is without any change. If a video's resolution is less than the display resolution, it will only occupy the small center portion of the screen.
<b>4:3</b>	The video will be forced to play at a 4:3 aspect ratio.
<b>16:9</b>	The video will be forced to play at a 16:9 aspect ratio.
<b>Fit View</b>	The video will be played slightly zoomed out. This is useful for use with TVs that apply over-scan.
<b>Video Full Screen</b>	The video will be played full screen at the video's native aspect ratio.
<b>Screen Full Screen</b>	The video will be played full screen at the display screen aspect ratio.

### ***C. Subtitles***

The Micca Speck supports subtitle tracks embedded in video files or as external subtitle files. When a video has both embedded and external subtitle files, the external subtitles will take precedence. Multiple external subtitle files for the same video is not supported.

When multiple external subtitle files are present, only one external subtitle file will be available for display. Be sure to place the external subtitle file in the same folder and with the same name as the video file:

My.Awesome.Movie.mkv

My.Awesome.Movie.srt

To toggle subtitles on or off, press the **<Subtitle>** button while a video is playing. The first subtitle track available will be displayed. To change to a different subtitle track, open the on-screen menu and change the Subtitle field to the desired track and press **<OK>**.

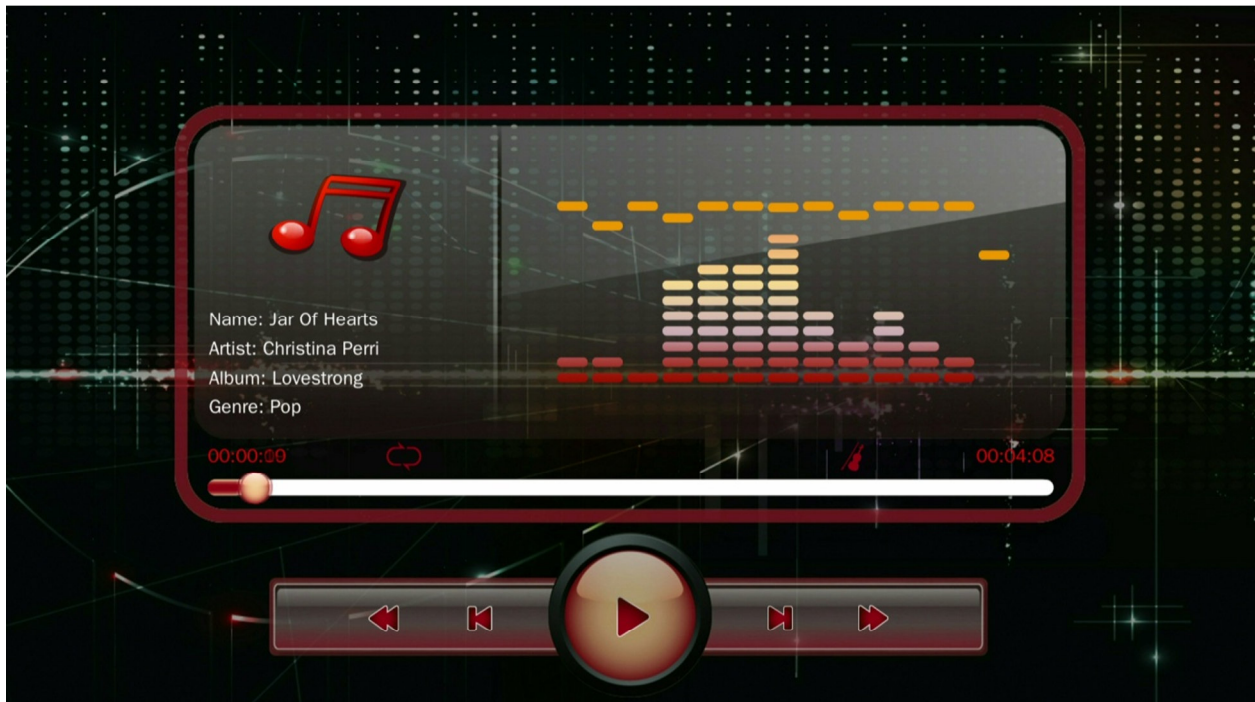
If the subtitle language file uses special character encoding, such as GBK for Chinese subtitles, the subtitle may appear as symbols using the default UTF8 encoding. To change to a different encoding, open the on-screen menu and change the Subtitle codec field to the desired value and press **<OK>**.



## VI. Playing Music

To browse and play music:

1. From the home menu, select the **Music** icon and press **<OK>** on the remote to begin browsing for movies.
2. Select which storage device to browse for music in: USB Drive, Memory Card, and Optical Drive. Highlight the desired device and press **<OK>**.
3. Select which partition of the drive to browse for music in. Most drives have only one partition. Highlight the appropriate partition and press **<OK>**.
4. All folders and compatible music files found will be displayed. If no folders or compatible music files are found, a message will pop up indicating "No Compatible Files Found!"
5. To browse thin a folder, highlight the folder and press **<OK>**. To back out of a folder, press the **<RETURN>** on the remote.
6. To play a music file, highlight the file and press **<OK>**.

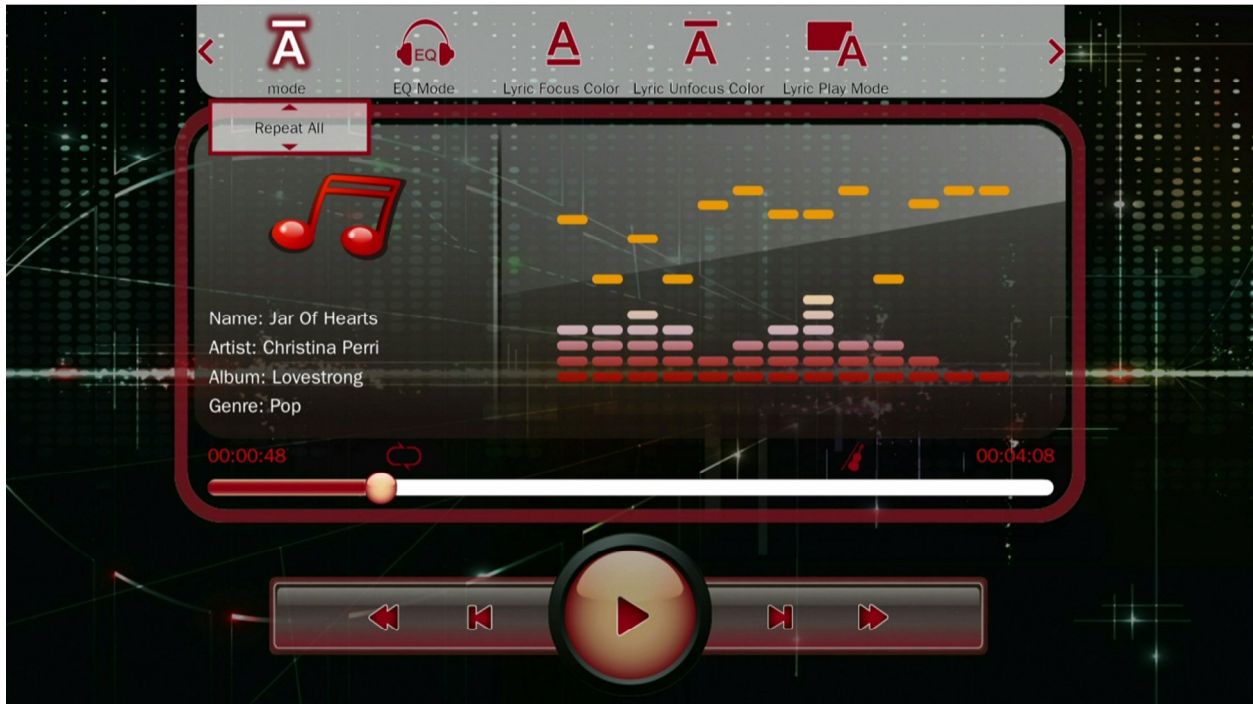


During playback of a music file, the following remote control operations are available:

Button	Description
<b>MUTE</b>	Mute all sound output.
<b>MENU</b>	Bring up the on screen display menu.
◀◀	Rewind - Available speeds are 1x, 2x, 4x, 8x.
▶▶	Fast Forward - Available speeds are 1x, 2x, 4x, 8x.
◀◀	Previous File - Play the previous file.
▶▶	Next File - Play the next file.
	Play/Pause - Pause or resume the current file.
■	Stop playing the current file.
<b>OK</b>	Play/Pause - Pause or resume the current file.
<b>HOME</b>	Go back to the home menu.
<b>RETURN</b>	Stop playing the current file.
<b>REPEAT</b>	Changes music playback sequence between Repeat All, Repeat One, Sequential, Random, Only Once.
<b>VOLUME</b>	Adjust the audio volume.

**NOTE:** Only files with compatible audio file extensions MP3, WMA, OGG, FLAC, and APE are visible in the file/folder directory. Audio files with incompatible file extensions will not be visible. Audio files with compatible file extensions but incompatible codec will generate an error when full screen playback is attempted.

## A. On-Screen Menu



During playback of music, the on-screen menu offers a convenient way to access many frequently used playback settings. To use the on-screen menu, press the **<MENU>** button on the remote while a music file is playing.

To change a playback setting, use the **<◀>** and **<▶>** buttons on the remote to highlight the setting; use the up and down buttons to change the settings value; press the **<OK>** button to save the present setting. When finished, press the **<RETURN>** button to exit out of the on-screen menu.

Setting	Description
<b>Mode</b>	Change the playback sequence between Repeat One, Repeat All, Sequential, Random, Only Once.
<b>EQ Mode</b>	Change the equalizer preset for music playback. Various presets are available for different sound effects.
<b>Lyric Focus Color</b>	Change the color of the lyrics currently sung.

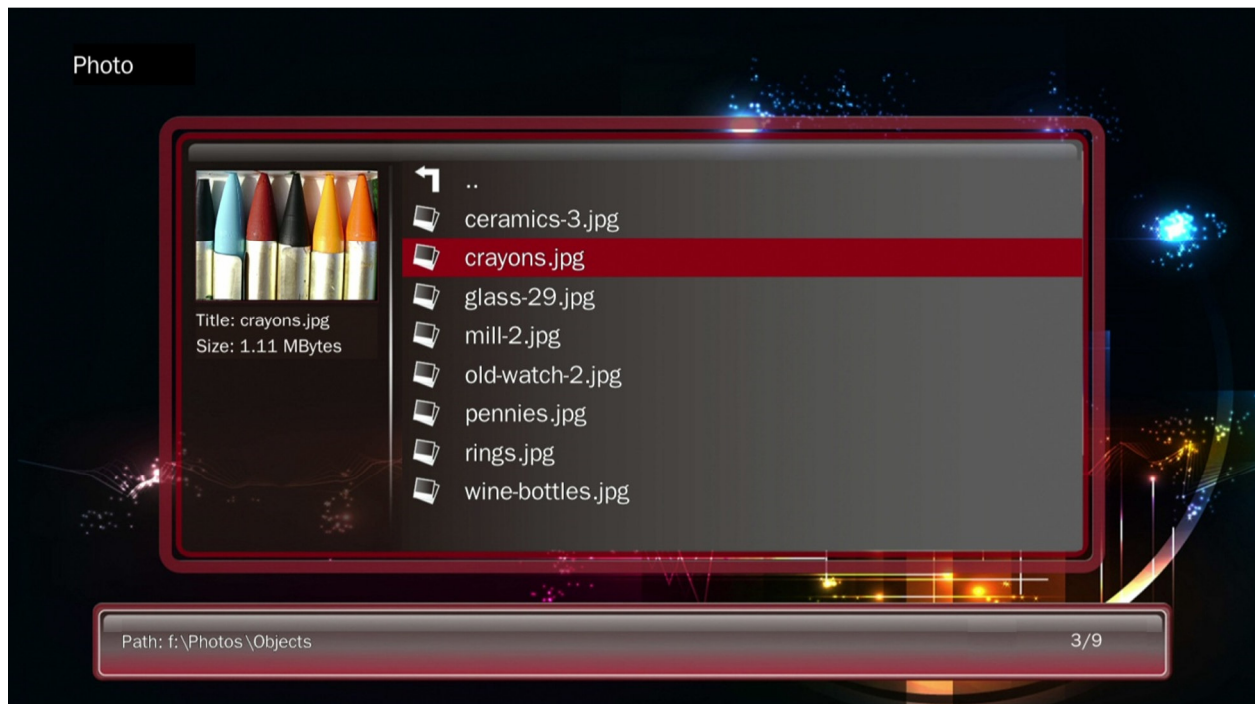


<b>Lyrics Unfocus Color</b>	Change the color of the lyrics not currently sung.
<b>Lyric Play Mode</b>	Change the lyric display style between Karaoke, or Line Roll.

## VII. Viewing Photos

To browse and view photos:

1. From the home menu, select the **Photo** icon and press **<OK>** on the remote to begin browsing for photos.
2. Select which storage device to browse for photos in: USB Drive, Memory Card, and Optical Drive. Highlight the desired device and press **<OK>**.
3. Select which partition of the drive to browse for photos in. Most drives have only one partition. Highlight the appropriate partition and press **<OK>**.
4. All folders and compatible photos found will be displayed. If no folders or compatible photos are found, a message will pop up indicating “No Compatible Files Found!”
5. To browse thin a folder, highlight the folder and press **<OK>**. To back out of a folder, press the **<RETURN>** on the remote.
6. To view a photo full screen, highlight the file and press **<OK>**.



While viewing a photo full screen, the following remote control operations are available:

<b>Button</b>	<b>Description</b>
<b>MENU</b>	Bring up the on screen display menu.
<b>II</b>	Play/Pause - Start slideshow.
<b>⏮</b>	Previous File - Previous photo.
<b>⏭</b>	Next File - Next photo.
<b>■</b>	Stop the slideshow.
<b>OK</b>	Play/Pause - Start slideshow.
<b>HOME</b>	Go back to the home menu.
<b>RETURN</b>	Stop viewing the current photo and show the file list.
<b>ZOOM</b>	Zoom in and out for the current photo.

**NOTE:** Only files with compatible photo extensions JPG, BMP, GIF, and PNG are visible in the file/folder directory. Photos with incompatible file extensions will not be visible.

## A. On-Screen Menu



During playback of a photo slideshow, the on-screen menu offers a convenient way to access many frequently used playback settings. To use the on-screen menu, press the **<MENU>** button on the remote while a photo is displayed.

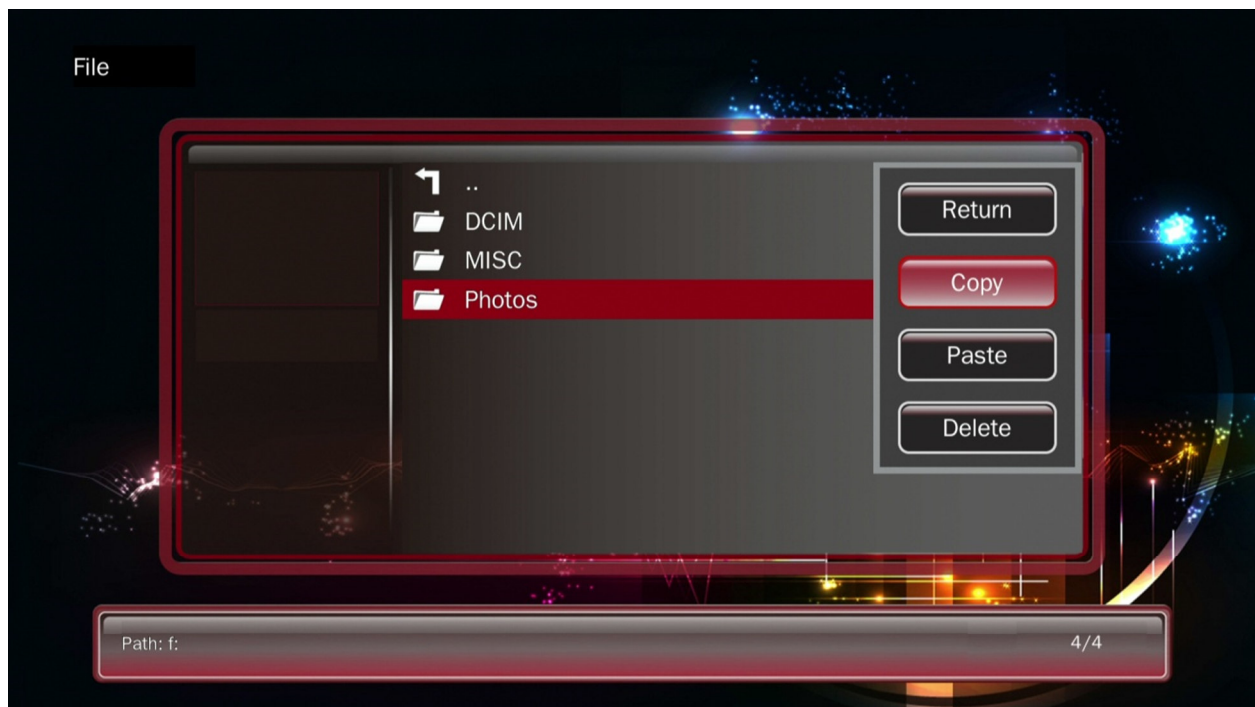
To change a setting, use the **<◀>** and **<▶>** buttons on the remote to highlight the setting; use the up and down buttons to change the settings value; press the **<OK>** button to save the present setting. When finished, press the **<RETURN>** button on the remote.

Setting	Description
<b>Switch Mode</b>	Change the transition effect when going from one photo to the next
<b>Play Interval</b>	Change the time delay between photos.
<b>Background Music</b>	Turn background music playback on or off.

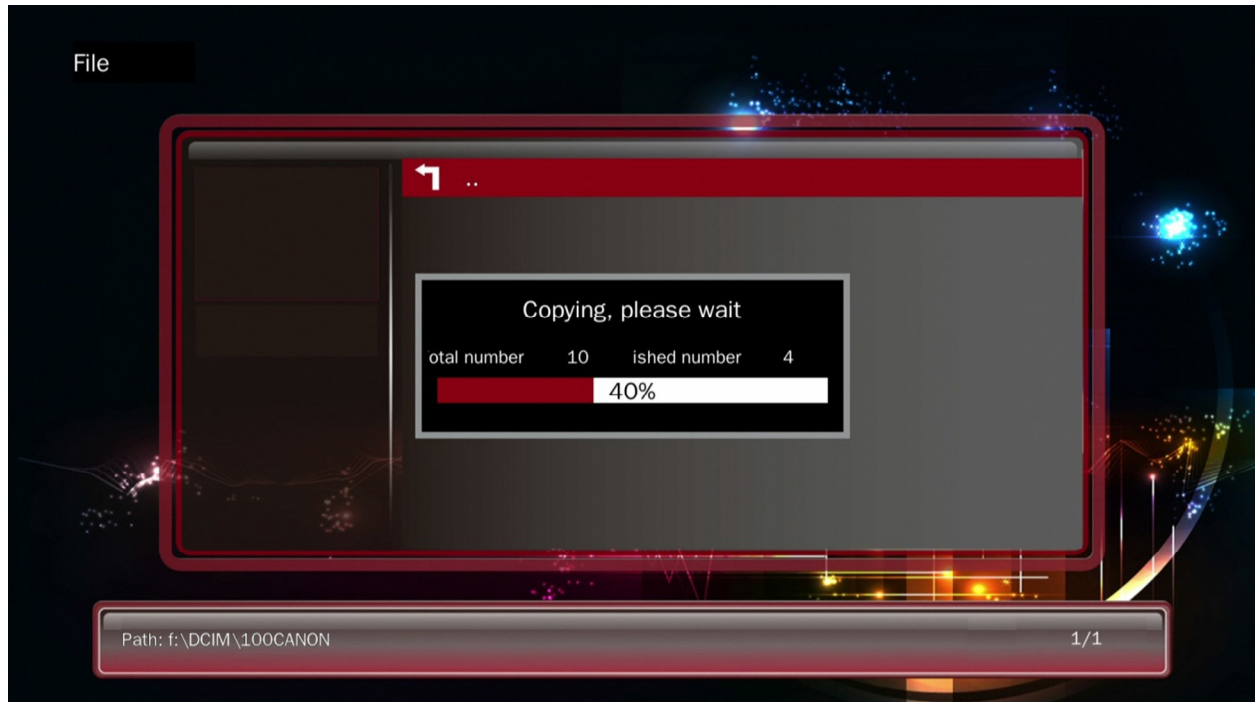
## VIII. File Copying/Deleting (FAT32 Drives Only)

The Micca Speck can be used to copy or delete files from USB drives or memory cards that uses the FAT32 file system (NTFS drives can only be read by the Speck). This feature is useful for such situations as moving digital camera photos from a memory card to a portable hard drive without needing a computer. To copy folders or files:

1. From the home menu, select the **File** icon and press **<OK>** on the remote.
2. Select which storage device to copy files from: USB Drive, Memory Card, and Optical Drive. Highlight the desired device and press **<OK>**.
3. Select which partition of the drive to copy files from. Most drives have only one partition. Highlight the appropriate partition and press **<OK>**.
4. All folders and files found will be displayed.
5. Highlight the folder or file that is to be copied and press **<MENU>** on the remote to bring up the copy/delete menu.
6. To copy the highlighted folder or file, select **Copy** from the menu and press **<OK>** on the remote.



7. Now navigate to the folder that is the copy destination. Press **<MENU>** on the remote to bring up the copy/delete menu.
8. Select **Paste** from the menu and **<OK>** on the remote to begin copying.



After copying, you may wish to delete the original folder or files. To do so, navigate to the folder or file to be deleted. Highlight the folder or file and press **<MENU>** on the remote, then select **Delete** from the menu and press **<OK>** on the remote to delete the folder or file.

## IX. Settings

The setting menu contains numerous configuration parameters that control the behavior of the Micca Speck during use. Press the **<SETUP>** button on the remote to access the Settings at any time.



### [Language]

Sets the operating language.

Available values: *English, Simplified Chinese, Traditional Chinese, Japanese, Korean, German, Spanish, French, Italian, Portuguese, Dutch, Russian, Polish, Turkish, Czech.*

### [Screen Saver]

Sets the idle time after which the screen saver will be displayed.

Available values: *1 / 2 / 3 / 10 / 30 Minutes, 1 / 2 Hours, Off.*

### [Video Output Mode]

Sets the video output mode

Available values: *NTSC, PAL, 720p (50/60Hz), 1080i/p (50/60Hz)*

### [Audio Output Mode]

Sets the audio output mode. In normal mode, audio will be output through HDMI or analog AV output depending on which output is selected. In analog mode, audio will be output only through the AV output jack.

Available values: *Normal, Analog*

#### **[Auto Play]**

Automatically play media files found on the root directory of the external USB or Memory Card.

Available values: *Off, Movie, Music, Photo.*

#### **[Auto Play DVD]**

Automatically play DVD disc detected in an attached optical drive. Commercial DVDs are not supported by the player due to encryption.

Available values: *On, Off.*

#### **[Auto Detect HDMI]**

Automatically detect if a HDMI connection is present when powering on. If detected the player will automatically switch to HDMI output mode instead of AV output.

Available values: *On, Off.*

#### **[Restore Default Setting]**

When selected, resets all settings back to factory default

#### **[System Information]**

When selected, displays the current firmware version

\*\*Firmware Updates – When available, firmware updates will be available for download from our product information website <http://www.miccatron.com> and will include installation instructions.



## X. Troubleshooting

The following are some common questions and answers. For additional troubleshooting resources, visit our product information website <http://www.miccatron.com>, or email technical support at [support@miccatron.com](mailto:support@miccatron.com) for personalized assistance.

### **No video output, or distorted video on screen.**

Most likely, the player has not been set to the correct output mode. If connected using the AV Red/White/Yellow cable to the TV, press the **<AV>** button on the remote to toggle the output mode. If connected using the HDMI output to the TV, press the **<HDMI>** button on the remote to switch the player to HDMI output mode.

### **Video file format not supported or plays without sound.**

The Micca Speck supports a wide range of popular video and audio formats. However, there are many specialized or proprietary video and audio formats which while rare is still in use. Occasionally a video will be encoded in one of these formats and fail to playback on the Micca Speck. If you run into such a video, contact the source of the video to ask what format it is encoded in and check it against the list of audio and video formats that the Micca Speck supports. It may be possible to recode the video in to a more common format. Contact Micca technical support if you need assistance.

### **USB flash drive or hard drive does not show up.**

The Micca Speck supports drives up to 2TB in size that use MBR partition table and NTFS or FAT32 file system. MBR/NTFS is the native format for Windows PCs and is also supported by Linux and MacOS. Check to see if your drive is using MBR partition table and NTFS file system if it does not show up on the Micca Speck.

The Micca Speck is able to power most portable USB hard drives through its USB port. Older USB hard drives that require a USB Y-cable to draw power from two USB ports may not function correctly due to excessive power requirement.

---

---

Information in this manual is believed to be accurate and reliable but Micca Ltd assumes no responsibility for its use nor for any infringement of patents or other rights of third parties which may result from the use of this manual or the product. Micca reserves the right to change product specifications at any time without notice.

Micca, Micca Speck, and the Micca logo are trademarks of Micca Ltd. Other trademarks referenced in this manual are the properties of their respective owners.

© 2013 Micca Ltd. All rights reserved.

Copyright © 2009-2013 Micca, LTD. All rights reserved.