

TIP EDGE ORTHODONTICS FOR ASSISTANTS

Michael J. Scoles DMD

What is the Tip Edge Technique?

- ⦿ The tip edge bracket allows the dentist to utilize light forces in the range of 2 to 4 ounces to move teeth.
- ⦿ This results in decreased chair time, reduced patient discomfort, shorter overall treatment.

Tip Edge Protocol

- ⦿ Tip Edge is done in three distinct stages.
- ⦿ Every case is approached the same way.
- ⦿ You do not proceed to the next stage until you have reached the goals from the previous one.

Stage 1

- ⦿ Open or close bite.
- ⦿ Correct anterior crowding, spacing, rotations, and gain bracket engagement.
- ⦿ Correct molar relationships.
- ⦿ Correct cross bite.

Stage 2

- ⦿ Close remaining posterior spaces.
- ⦿ Correct dental midlines.
- ⦿ Correct posterior cross bites.
- ⦿ Achieve Class 1 molar occlusion.
- ⦿ Maintain all corrections of anterior teeth achieved during Stage 1.

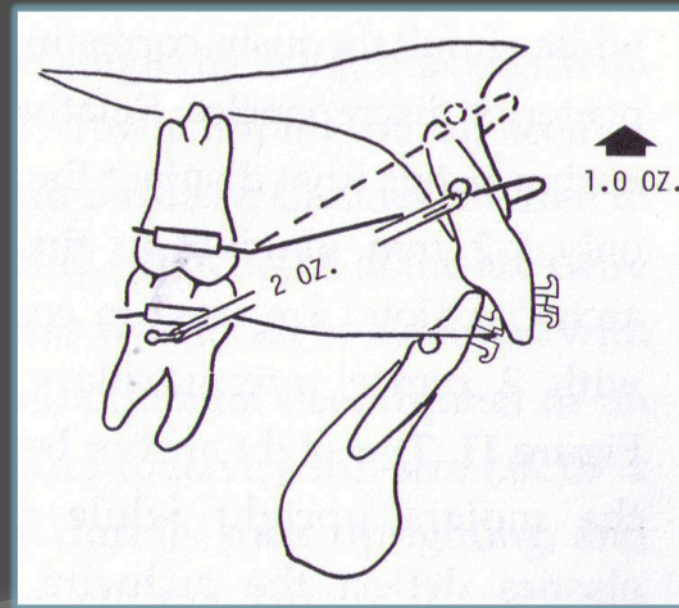
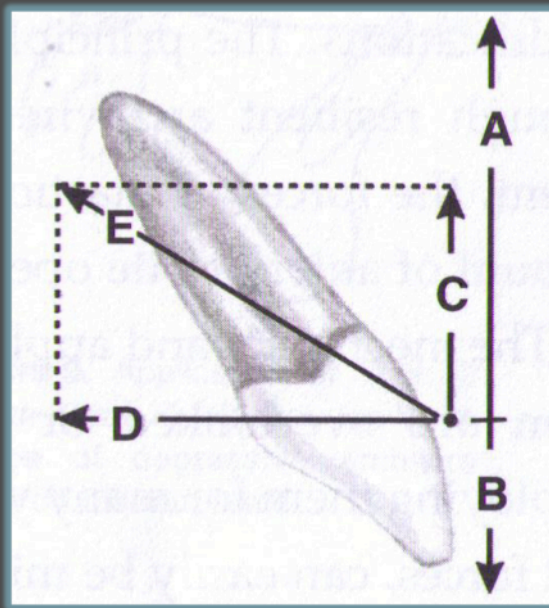
- ⦿ *Non-extraction cases usually do not require Stage 2.*

Stage 3

- ⦿ Maintain all corrections achieved during stages one and two.
- ⦿ Achieve final tip and torque inclinations of all teeth.

How it works

- ◉ We need to move the tooth apical and distal to open the bite.
- ◉ A bend in the archwire and elastics accomplishes this movement.



The Bracket

- ◎ The tip edge bracket is different in that it allows a tooth to freely move mesially or distally.



You can get tooth movement with as little as two ounces of pressure.

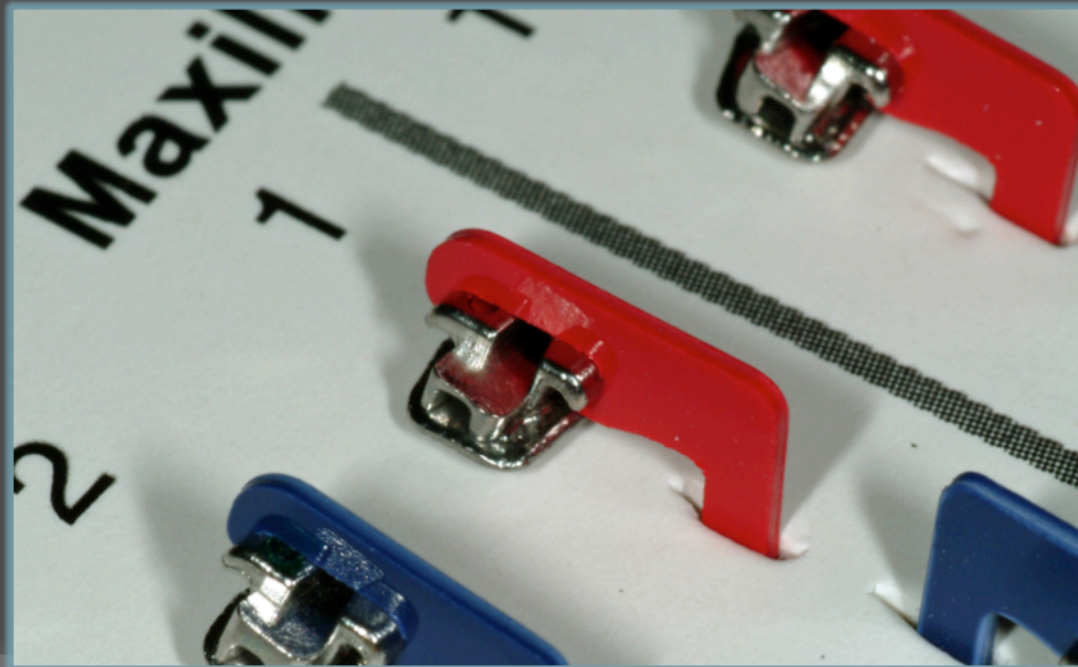
The bracket has a vertical slot, as well as a channel behind the primary slot.

The slot is used for auxiliary movement devices.

The channel is used with NiTi wire for fine tuning in Phase 3.

Placement Jig

- ◉ Initially, you only place brackets from canine to canine.
 - Bands are placed on all first molars.
 - Bi-cuspid brackets are placed during stage 2



The Wires

- ⦿ Tip edge uses both stainless steel and nickel titanium wire.
- ⦿ In severe crowding cases, you will use both wires at the same time.
- ⦿ All cases start with a Stainless .016 wire

Elastics

- ⦿ Every Tip-edge case will get elastics
- ⦿ Placed on lower molar hook up to circle on max archwire.
- ⦿ Start out with Pink
 - Sizes are Pink, Yellow, Green and Blue



First Appointment

Records

3 units assistant time

- ⦿ Impressions using Extend-O trays
- ⦿ Pano
- ⦿ Referral for Lateral Ceph
- ⦿ Photographs
 - Full face repose
 - Full face profile repose
 - Full face smiling
 - Close up Smiling
 - Retracted Anterior
 - Max and Man Occlusal views
 - Side views with mirror

Second Appointment

Case Presentation

2 units doc time, 1 unit front office 3 units total

- ⦿ Go over treatment with patient
- ⦿ Front office goes over financial arrangements
- ⦿ If treatment is accepted and there is time in the schedule, assistant or doctor will place spacers. Otherwise re-appoint for 1 unit with assistant.

2a Extraction Appointment

4 units

- ⦿ If necessary, second bi-cuspids will be extracted
- ⦿ This is determined during case analysis
- ⦿ Same protocol is used for Adults and Children

Third Appointment

Bracket, Band and Wire placement

*2 units Asst-7 units Doc-2 units Asst 11 units total**

- ◎ Asst does the following:
 - remove spacers
 - try-in bands-leaving them on
 - prophylaxis
 - place dam
 - etch 6-11
- ◎ Doc and Asst do the following together:
 - Place 12 anterior brackets
 - Place four molar bands, cement with Fuji GI
 - Place wires
- ◎ Asst places rings, elastics, and goes over HCl.

* Timing may be changed due to ease or difficulty of case, and staff/ doctor experience.

6 week Recalls

1 doc-1 unit asst-1 unit doc 3 units total*

- ⦿ Doc observes progress
- ⦿ Asst removes rings, wires
 - From progress notes, asst will have proper new wire on bracket table
- ⦿ Doc adjusts or changes wires
- ⦿ Asst places rings
- ⦿ Asst goes over HCI

*As we schedule heavier, two patients may be seen at the same time. This visit will take less than 30 minutes as we gain experience.

Appointment Preparation

- ⦿ View progress notes
 - will show what is going to be done
 - have specific wire available
- ⦿ Study models on bracket table
- ⦿ After seating patient, find out if bracket is loose, if so, prepare to place new one before doc comes in.

Chart Entries

- ⦿ Specify which wire was used
- ⦿ Progress
- ⦿ Specific bends if applicable
- ⦿ NV
 - What will we do at next visit.
 - This will be the first part of the next appt entry
- ⦿ Cut and paste last half of last entry in beginning of following entry.

When is the best age to start?

- ⦿ Unless there is an obvious discrepancy between maxillary and mandibular skeletal growth, wait for signs of adult bicuspid.
- ⦿ As early as anterior 6 teeth can be bracketed.
- ⦿ Doing this potentially shortens treatment time.
- ⦿ Older children may be more compliant.