

**FRIDAY, MARCH 27TH**  
**TREMENDOUS OFFERING HUGE ONE OWNER AUCTION**  
**CONTRACTORS EQUIPMENT, TOOLS, TRUCKS & VEHICLES**

# PUBLIC AUCTION



(2) 2000 Caterpillar Model 627F Tractor Scrapers



2000 Caterpillar D6RXL and 2005 John Deere 550J Crawler Dozers



Partial View Ingersoll Rand and Caterpillar Compactors



Huge Fleet Of Service, Pick-Up, Maintenance, Flat Bed and Other Trucks Of All Types

**Featuring:** (2) Cat Scrapers, (2) Crawler Dozers, (2) Backhoe Loaders, Front End Loader, Mini Excavator, Farm Tractors, (9) Compactors, Morbark Chipper, Road Equipment, Bobcat, Huge Quantity Attachments of All Types, Construction Tools, Supplies & Material, Truck Mount Jet Engine Dryer, (3) Flat Beds, (6) Road Tractors, Lube Truck, (19) Pick-Ups, (17) Service Trucks, (4) Dump Trucks, (3) Water Trucks, (3) Crane Trucks, Bucket Truck, (4) Passenger Vehicles, (8) Civilian Pick-Ups, (3) Detachable Neck Trailers, (16) Other Trailers, Earth Moving GPS Systems, Huge Quantity Survey Equipment, Lift Trucks, Tools, Shop & Office Equipment

**CEASED OPERATIONS - ON THE PREMISES OF  
HUGE ONE OWNER AUCTION - FORMER ASSETS OF**



**MILLER BROTHERS  
EXCAVATING, INC.**

7900 South Kessler Frederick Road  
Tipp City, Ohio 45371  
*Just North Of Dayton Off I-70*

**SALE DATE:**  
**Friday,**  
**March 27th**  
**Starting at 9:00 AM**

**INSPECTION:**  
**Wednesday, March 25th &**  
**Thursday, March 26th**  
**9:00 AM to 4:00 PM**

**NEW & IMPROVED WEBSITE**  
[www.cia-auction.com](http://www.cia-auction.com)

**New Features:**  
Photo Gallery, Recent Auction  
Results, Staff Profiles  
& Reference Information

**Also Features:**  
Upcoming Sale Information,  
Printable Color Brochures,  
Printable Lot Listing Catalogs,  
Downloadable Forms,  
Complete Terms of Sale



1998 Morbark Model 30/30 Mountain Goat Track Type Whole Tree Wood Chipper



Huge Quantity Contractor Tools and Equipment



Huge Quantity Construction Materials



Partial View Civilian Vehicle Fleet

SALE UNDER THE MANAGEMENT OF

**Cincinnati Industrial  
Auctioneers Inc.**

2020 DUNLAP ST., CINCINNATI, OHIO 45214  
PHONE (513) 241-9701 / FAX (513) 241-6760  
INTERNET: [www.cia-auction.com](http://www.cia-auction.com)



IN CONJUNCTION WITH

**BIDITUP™**

AUCTIONS & APPRAISALS WORLDWIDE

11426 VENTURA BLVD., STUDIO CITY, CA 91604  
PHONE (818) 508-7034 / FAX (818) 508-3025  
INTERNET: [www.biditup.com](http://www.biditup.com)



(2) 2000 Caterpillar Model 627F Tractor Scrapers



2000 Caterpillar Model D6RXL Track Type Dozer



16' Wide Reynolds Model LS-16 Pull-Behind Hydraulic Scraper



2005 John Deere Model 550J Track Type Dozer



(3) Caterpillar Cable Type Pull-Behind Scrapers



(2) 1999 John Deere Model 410E Turbo 4 X 4 Four-Wheel Drive Rubber Tire Backhoe Loaders



1974 John Deere Model 570A Road Grader



1994 John Deere Model 544G Four-Wheel Drive Rubber Tire Front End Loader



John Deere 8440 and White T700 Farm Tractors



2001 Komatsu Model PC35R-8 Mini Excavator

## SCRAPING EQUIPMENT

(2) 2000 Caterpillar Model 627F Tractor Scrapers; S/N's 1DL00850 w/ 7970 Hrs., Unit 228 & 1DL00854 w/ 8616 Hrs., Unit 227, 20 Cu. Yd. Capacity Heaped - 14 Cu.Yd. Capacity Struck, Over Plow Guard, Quick Drop Bowl Valve, Tractor & Scraper Both w/ Cat 3406 Six-Cylinder Diesel Engines Front & Cat 3306 Six-Cylinder Diesel Engines Rear, 24-Volt Electric Start, 8-Speed Powershift Transmission, Differential Lock, Enclosed Cab w/ A/C

SEE PHOTO

16' Wide Reynolds Model LS-16 Pull-Behind Hydraulic Scraper; S/N 25688

SEE PHOTO

14' Wide Reynolds Model 140 Pull-Behind Hydraulic Scraper; S/N 25077

10' Wide Reynolds Model 100 Pull-Behind Hydraulic Scraper; S/N 26327

10' Wide Reynolds Model GL-10 Pull-Behind Hydraulic Scraper; 264D

(3) Caterpillar Cable Type Pull-Behind Scrapers

SEE PHOTO

## CRAWLER DOZERS

2000 Caterpillar Model D6RXL Track Type Dozer; S/N 5LN02628, 12,884 Hrs., Operator Environment Finger Tip Control w/ Touch Shift, Cat D6R Monitor System, Rops, Powertrain, Decelerator, Cat 3306 Diesel w/ 24-Volt Electric Start, Ether Starting Aid, Powershift Transmission, Automatic Kick Down, Auto Shift (2R-1F, 2R-2F), Undercarriage: Hydraulic Tank Hoister, Lifetime Lubricated Idlers & Rollers, 7.34 Yd. Blade Capacity, Unit 221

SEE PHOTO

2005 John Deere Model 550J Track Type Dozer; S/N TOSS0JX104365, 5,288 Hrs., John Deere Powertec 4.5 Liter Turbo Charge Diesel Engine, Heated & Air Conditioned Cab, 6-Way Blade, 3-Plow Ripper Attachment, Unit 345

SEE PHOTO

## BACKHOE LOADERS

(2) 1999 John Deere Model 410E Turbo 4 X 4 Four-Wheel Drive Rubber Tire Backhoe Loaders; S/Ns 877173 w/ 7,041 Hrs., Unit 174, 877136 w/ 3029 Hrs., Unit 173, John Deere 4045 Diesel Engine, Auto Transmission, Cab Enclosure, 16" Wide Bucket Hoe, 90" Wide Loader Buckets

SEE PHOTO

## FRONT END LOADER

1994 John Deere Model 544G Four-Wheel Drive Rubber Tire Front End Loader; S/N DW544GB545066, 18,726 Hrs., 5.9 Liter John Deere 6-Cylinder Diesel Engine, 20.5-25 L2 Tires, 96" Wide Loader Bucket, Unit 669

SEE PHOTO

## MINI EXCAVATOR

2001 Komatsu Model PC35R-8 Mini Excavator; S/N 37556, 5,379 Hrs. Showing, Komatsu 3D84E-3F02 Engine, 34" - 20" - 12" Wide Buckets, Bucket Quick Coupler, Rubber Tracks, 8' Boom, 5' Arm, Unit 259

SEE PHOTO

## FARM TRACTORS

John Deere Model 8440 Four-Wheel Drive Articulating Type Farm Tractor; S/N 8440H0025007R, 9,609 Hrs., 8-Speed Transmission, John Deere 466 6-Cylinder Diesel Engine, PTO, 3-Point Hitch, Rear Hydraulic Hook-Ups, Unit 604

White Model T-700 Farm Boss Farm Tractor; 4-Speed Tran, PTO, 3-Pt Hitch

## EQUIPMENT ATTACHMENTS

(50) Werk Brau Excavator Buckets In Sizes From 18" to 48" Wide; Many Equipped w/ Rock Ripper Attachments, Compatible to Wide Range of Equipment but Currently Set Up For John Deere 690/790m & Cat 322/792 Excavators

SEE PHOTO

Allied Model 795CS Hydraulic Hammer Excavator Attachment

SEE PHOTO

Allied Excavator Tamper Attachment

SEE PHOTO

140" Caterpillar Model 111-6845 00BCH/PAT65 Hydraulic Blade; S/N 3WL37962, Machine 70C, Hydraulic Lift & Angle

140" Balderson Model 111-6845 BCH/84165 Hydraulic Blade; S/N N/A, Hydraulic Lift & Angle

Caterpillar Model H63 Hydraulic Hammer Attachment

Caterpillar Model PC 206 Hydraulic Grinder Attachment; S/N DDG-00-216

96" Wide Hydraulic Power Broom

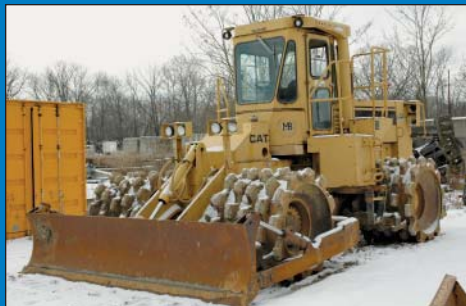
Bobcat Model 2500 Hydraulic Hammer Attachment

78" Wide John Deere Construction Bucket

62" Wide Mustang Attachable Hydraulic Sweeper

Alitec Model CPI6 Asphalt Grinder

(2) Caterpillar Model 127 Cradle Control Units; S/N 31E6720 & 31E7630



1988 Caterpillar Model 815B Sheepsfoot Compactor



2002 Ingersoll Rand Model SD-100D Vibratory Compactor



1989 Ingersoll Rand Model SD-70F Vibratory Sheepsfoot Compactor

## COMPACTION / ROLLER EQUIPMENT

**2002 Ingersoll Rand Model SD-100D Vibratory Compactor;** S/N 166475, 2879 Hrs., 84" Wide Compactor, 23.1-26 Tires, 4-Cylinder Diesel Engine, Unit 288 **SEE PHOTO**

**1998 Ingersoll Rand Model SD-100D Vibratory Compactor;** S/N 151589, 4,810 Hrs, 84" Wide Compactor, 4-Cylinder Diesel Engine, 23.1-26 Tires, Unit 128

**1998 Caterpillar Model CP-433B Sheepsfoot Articulating Vibratory Compactor;** S/N 1MG00075, 66" Wide Vibratory Compactor, 14.9-24 Tires, 4-Cylinder Diesel Engine, Unit 612

**(2) 1998 Ingersoll Rand Model CR-32 Vibratory Comparators;** Unit 287 S/N 152671 w/ 2,751 Hrs., Unit 290 S/N 149558 w/ 3,261 Hours, 52" Wide Compactor, (4) 8 1/2" Wide Hard Rubber Rear Tires **SEE PHOTO**

**1993 Ingersoll Rand Model SD-70D Vibratory Compactor;** S/N 5578-SFCV, Hours N/A, 66" Wide Compactor, 14.9-24 Tires, 4-Cylinder Diesel Engine, Unit 746

**1992 Caterpillar Model CP-433B/CS-433B Vibratory Compactor;** S/N 4FKC0078, 3568 Hrs, 66" Wide Compactor, 14.9-24 Tires, 4-Cylinder Diesel Engine, Unit 253 **SEE PHOTO**

**1989 Ingersoll Rand Model SD-70F Vibratory Sheepsfoot Compactor;** S/N 5064-S, 6,206 Hrs. Showing, 66" Wide Sheepsfoot Compactor, 14.9-24 Tires, 4-Cylinder Diesel Engine, Unit 615 **SEE PHOTO**

**1988 Caterpillar Model 815B Sheepsfoot Compactor;** S/N 17201001, 14,996 Hrs. Showing, Dual 38" Wide Front and Rear Compactor Rollers, 144" Wide Front Hydraulic Blade, 6-Cylinder Diesel Engine, Unit 527 **SEE PHOTO**

**1976 Raygo Model 404B Vibratory Compactor;** S/N 09E696, Hrs. N/A, 84" Wide Compactor, 16.9-30 Tires, 4-Cylinder Diesel Engine

**1970 Wabco Double Drum Pull Behind Sheepsfoot Compactor;** S/N 6879

**Holmes Model Rollerblade 16D Pull Behind Scraper/Compactor;** S/N RB-16-365, 16" Wide **SEE PHOTO**

**(2) Wacker Model RT Walk-Behind Sheepsfoot Compactors**

## PICK-UP TRUCKS

See Photos On Pg. 6

**(2) 2008 Ford F-250 Super Duty XL Pick-Up Trucks;** Unit 393, V/N 1FTNF20568EB30701 w/ 35,465 Miles, Unit 397, Vin 1FTNF20588EB30702 w/ 32,617 Miles, Both w/ Automatic Transmission, 5.4 Liter Triton, V-8 Gasoline Engine, 90 Gallon Weather Guard Fuel Tank w/ Gas Boy Electric Pump, Weather Guard Tool Boxes

**(3) 2006 Ford F-250 Super Duty XL Pick-Up Trucks;** Unit 380, V/N 1FTNF20526ED17723 w/ 50,047 Miles, Unit 381, Vin 1FTNF20546ED17724 w/ 56,250 Miles, Unit 351, Vin 1FTNF20566EA14850 w/ 103,874 Miles, All Equipped With Automatic Transmission, 5.4 Liter Triton V-8 Gasoline Engine, 90 Gallon Weather Guard Fuel Tank w/ Tuthill Electric Pump & Weather Guard Tool Boxes

**2004 Ford F-250 Super Duty XL Extended Cab Pick-Up Truck;** Unit 322, V/N 1FTNX20L04ED18989, 108,757 Miles, 5.4 Liter Triton V-8 Gasoline Engine, Automatic Transmission, 90 Gallon Weather Guard Fuel Tank w/ Tuthill Electric Pump, Weather Guard Tool Boxes

**(3) 2004 Ford F-250 Super Duty XL Pick-Up Trucks;** Unit 324, V/N 1FTNF20L34ED18990 w/ 80,604 Miles, Unit 325, Vin 1FTNF20L54ED18991 w/ 62,313 Miles, Both Equipped w/ 5.4 Liter Triton V-8 Gasoline, Automatic Transmission, 90 Gallon Weather Guard Fuel Tank w/ Tuthill Electric Pump, Weather Guard Tool Boxes, Unit 326, Vin 1FTNX20L94ED18988 w/ 87,474 Miles w/ Ladder Rack

**(4) 2003 Ford F-250 Super Duty XL Pick-Up Trucks;** Unit 307, V/N 1FTNF20L73ED55667 w/ 79,108 Miles, Unit 311, Vin 1FTNF20L93ED55668 w/ 97,197 Miles, Unit 310, Vin 1FTNF20L03ED55669 w/ 132,836 Miles, Unit 308, Vin 1FTNF20L73ED55670 w/ 90,320 Miles, 5.4 Liter Triton V-8 Gasoline Engine, Automatic Transmission, 90 Gallon Weather Guard Fuel Tank w/ Tuthill Electric Pump, Weather Guard Tool Boxes

**1997 Chevrolet Cheyenne 1500 Pick-Up Truck;** Unit 239, V/N 1GCCG3R2VF010629, 164,570 Miles, 5.7 Liter Vortec V-8 Gasoline Engine, Automatic Transmission, 90 Gallon Weather Guard Fuel Tank w/ Electric Pump, Weather Guard Tool Boxes

**1996 Chevrolet Cheyenne 2500 Pick-Up Truck;** Unit 238, V/N 1GCF24RXTZ119017, 165,041 Miles, 5.7 Vortec V-8 Gasoline Engine, Automatic Transmission, 90 Gallon Weather Guard Fuel Tank w/ Great Plains Electric Pump, Weather Guard Tool Boxes

**(3) 1996 Chevrolet Cheyenne 1500 Pick-Up Trucks;** Unit 773, V/N 1GCEC14M2T199844 w/ 230,377 Miles, Unit 774, Vin 1GCEC14M4TZ181832 w/ 271,144 Miles, Unit 775, Vin 1GCEC14MXTZ203414 w/ 293,464 Miles, All Equipped w/ 5.0 Liter Vortec V-8 Gasoline Engine, Automatic Transmission

## CIVILIAN PICK-UP TRUCKS

See Photos On Pg. 6

**2007 Chevrolet Silverado 1500 4WD Extended Cab Pick-Up Truck;** V/N 1GCEK19J97ZS14761, 54,853 Miles, Automatic Transmission, 5.3 Liter Vortec V-8 Gasoline Engine, Towing Package, Unit 403

**2005 Chevrolet Silverado 1500 4WD Extended Cab Pick-Up Truck;** V/N 1GCEK19B65E153065, 112,207 Miles, Automatic Transmission, 5.3 Liter Vortec V-8 Gasoline Engine, Unit 355

**2004 Ford F-350 4X4 XLT Super Duty Extended Bed Pick-Up Truck w/ Snow Plow;** V/N 1FTSX31P24EC98268, Approx 147,577 Miles, 90 Gallon Fuel Tank w/ Gas Boy Electric Pump, Weather Guard Tool Box, The Boss V-Shaped Snowplow 8' Power V, S/N 99552, Unit 236

**2004 Chevrolet Silverado 1500 Extended Bed Pick-Up Truck;** V/N 2GCEK19T241270389, Approx. 266,400 Miles, 5.3 Liter Vortec V-8 Gasoline Engine, Automatic Transmission, Adrian Steel Cargo Box, Unit 316

**2003 Chevrolet Silverado 1500 4WD Extended Cab Pick-Up Truck;** V/N 2GCEK19T831184387, 93,230 Miles, Automatic Transmission, 5.3 Liter Vortec V-8 Gasoline Engine, Unit 285

**2002 Chevrolet Avalanche 4X4 Pick-Up Truck;** V/N 3GNEK13T33G271752, 115,827 Miles, Automatic Transmission, 5.3 Liter Vortec V-8 Gasoline Engine, 4-Door Extended Cab, Leather Seats, Unit 303

**2000 Chevrolet Silverado 1500 Extended Cab Pick-Up Truck;** V/N 2GCEC19T6Y1Z01563, 77,443 Miles, Automatic Transmission, 5.3 Liter Vortec V-8 Gasoline Engine, Heated Leather Seats, Unit 369

**1998 Chevrolet 1500 Extended Cab Pick-Up Truck;** V/N 2GCEK19R0W1104900, 183,027 Miles, Automatic Transmission, 5.7 Liter Vortec V-8 Gasoline Engine, Unit 113

**1994 Ford F-250 4X4 Pick-Up Truck;** 85,000 Miles, V-8 Engine, Full Power

## PASSENGER VEHICLES

See Photos On Pg. 6

**2008 GMC Yukon 4X4 XL SLT Sport Utility Vehicle;** V/N 1GKFK16Y5SR130018, 9,254 Miles, 6.0 Liter Vortec V-8 Gasoline Engine, Automatic Transmission, Heated Leather Seats, TV DVD Player, Onstar, Sun Roof, Automatic Descending Side Boards, Unit 412

**2005 Ford Excursion Limited 4X4 Sport Utility Vehicle;** V/N FMNU3S45EC16728, 117,147 Miles, Automatic Transmission, 6.8 Liter Triton V-10 Gasoline Engine, Front Tow Hooks, 4 X 4 Trailer Tow Group, Leather Seats, Unit 348

**2001 Chevrolet 4WD Blazer LT Sport Utility Vehicle;** V/N 1GNND13W812208994, 150,579 Miles, Automatic Transmission, 4.3 Vortec Gasoline Engine, Unit 237

**1998 Pontiac Grand Prix Sedan;** V/N 1G2WP5216WF318210, 148,895 Miles, Automatic Transmission, 3800 Series II Super Charged V-6 Engine, Leather Seats, Unit 341

## COLLECTOR CARS

See Photos On Pg. 6

**2002 Monte Carlo 5S Coupe Dale Earnhardt Signature Edition;** V/N 2G1WX15K229192173, Only 15 Miles, Silver Ground Effects, 16" Diamond Cut Aluminum Wheels, Racing Inspired Rear Spoiler, Signature Edition Graphics, Embroidered Floor Mats & Head Rests, Pewter Insets, Sets & Door Panels, Sun Roof, Electric Leather Accent Bucket Seats

**1995 Monte Carlo Z-34 1994 Inaugural Brickyard 400 Official Pace Car Edition;** V/N 2Q1WX12X8S9120507, 680 Miles, 3.4 Liter DOHC V6 Gasoline Engine, Automatic Transmission, Leather Embroidered Seats



(2) 1998 Ingersoll Rand Model CR-32 Vibratory Comparators



1992 Caterpillar Model CP-433B/CS-433B Vibratory Compactor



Partial View Pull Behind Sheepsfoot Compactors



Allied Model 795CS Hydraulic Hammer Excavator Attachment



(50) Werk Brau Excavator Buckets In Sizes From 18" to 48" Wide



# FRIDAY, MARCH 27TH - 9:00 AM



Rebuilt  
2003

1998 Morbark Model 30/30 Mountain Goat Track Type Whole Tree Wood Chipper



10' Wide Barber Greene Model Matmaker SA-150 Asphalt Paver



2004 Broce Model BB-250-B Rider Type Power Broom



(15) Assembled Trench Boxes In Sizes To 24' X 8' X 7'



Finn T-90-TD and MSW-27 Seeding Machines



Holmes Model Rollerblade 16D Pull Behind Scraper/Compactor



(7) Lift Trucks Of All Types



Partial View Pull Behind Attachments



2003 Bobcat Model S300 Skid Steer Loader



Allied Excavator Tamper Attachment



Land Pride Model 25-20 Solid Stand Grass Seeder

## WHOLE TREE CHIPPER

1998 Morbark Model 30/30 Mountain Goat Track Type Whole Tree Wood Chipper; S/N 476-1006, Unit 266, 505 HP Caterpillar Diesel Engine, Production to 50 Tons Per Hour, 33" X 30" Infeed Openings, Hydraulic Swivel Discharge Chute, 18" Dia. Chipping Capacity, Maxlift Model 250-2 Knuckle Boom Loader, 325L Caterpillar Undercarriage, Skidder-Style Dozer Blade, **Rebuilt 2003** **SEE PHOTO**

> **Major Rebuild of this Machine in 2003 to Include;** All New Wiring & Electrical Harnesses, New Hydraulic Lines, Hydraulic Pumps, Final Drive & Transmission Bearing & Seals, Fuel Lines & Other. Approx. 1200 Hours since Rebuild

## ROAD EQUIPMENT

10' Wide Barber Greene Model Matmaker SA-150 Asphalt Paver; S/N SA150X172, Cat 3208 V8 Diesel Engine, 120" Width, Unit 254 **SEE PHOTO**

1974 John Deere Model 570A Road Grader; S/N 002616T, Front Mount Ripper, Hydraulic Blade Controls, John Deere 6329CT 03 6-Cylinder Turbo Diesel Engine, Enclosed Cab w/ A/C, Unit 240 **SEE PHOTO**

## LIFT TRUCKS & RELATED

9,000 Lb Hyster Model H90XL2 LP Gas Pneumatic Tire Lift Truck; S/N F005D05363N, 2-Stage Mast, Heater, 3-Way Valve, Rops, MBA

8,000 Lb Caterpillar Model DP40 Diesel Power Pneumatic Tire Lift Truck; 98/148 2-Stage Mast, Cab With Heater (New 1999)

8,000 Lb Wiggins Model WD84UV Diesel Power Pneumatic Tire Lift Truck; 120/168 2-Stage Mast, Deutz Air Cooled Diesel Engine (New 1997)

6,000 Lb Caterpillar Model GP30K Dual Fuel Pneumatic Tire Lift Truck; 95/148 2-Stage Mast, Sideshift, Dual Drive (New 1999)

6,000 Lb Hyster Model H60XM LP Gas Pneumatic Tire Lift Truck; S/N H177B02054, 3-Stage Mast, 184" Max Lift, Rots, MBA

3,000 Lb Caterpillar Model V30D Pneumatic Tire LP Gas Lift Truck; S/N 474040, 2-Stage Mast

3,000 Lb Hyster Model E30XL Solid Tire Electric Lift Truck; S/N C114V03339J, 3-Stage Mast, Complete w/ 36-Volt Charger

Clark American Lincoln Model 578-610 Sit Down LP Gas Floor Sweeper; S/N A80113, Pneumatic Tires

## CONSTRUCTION & FIELD EQUIPMENT

2003 Bobcat Model S300 Skid Steer Loader; S/N 521512429, 3407 Hrs. Showing, 78" Wide Construction Bucket, Fork Attachment, Cab Enclosure **SEE PHOTO**

2004 Broce Model BB-250-B Rider Type Power Broom; S/N 304037, 99 Hrs. Showing, 96" Wide Broom, Hydraulic Angling, 4-Cylinder Kubota Diesel Engine, Unit 329 **SEE PHOTO**

(3) 2000 Atlas Copco Model XAS96-JD Portable Diesel Powered Air Compressors; 4-Cylinder John Deere Diesel Engine, 110 PSIG, Unit 223, 223, 224

(15) Assembled Trench Boxes Consisting of Sizes; (4) 24L X 8H X 5W, 24L X 8H X 3W, 24L X 8H X 7' W, 24L X 3H X 3W, (2) 24L X 4H X 4W, 20L X 8H X 5W, (2) 10L X 8H, 8H, 10L X 8H X 4H, 10L X 7H X 8H, 4' W X 8H X 16L, Also 12 Unassembled Pieces of Various Size

Approx. (500) Steel Frame Plywood Face Straight Concrete Forms; Various Widths From 12" - 24", Length Range Between 24" to 96"

**Huge Quantity Misc. Construction Equipment, Tools & Field Equipment Consisting of;** (3) 50 KW Winco Portable Generator Sets w/ Kubota Diesel Engines, Night Blaster Portable Light Tower w/ 2856 Hrs Showing, Levoy-Somer Generator & Kubota Engine, Max Light Portable Light Tower, Roots Trailer Mounted Gas Powered Universal Blower Unit; w/ Wisconsin Gas Engine, 6" Gorman Rupp Model 16C2-FLL Portable Water Pump w/ Deutz Diesel Engine, Pull-Behind Tar Buggy, (2) 50 Cu. Yd. Capacity Steel Framed Gravel Boxes, Trench Scaffolding, Concrete Barriers, Road Signs, Plastic Fencing, (20) Honda 4 & 5 HP Water Pumps, Honda GX120 HP Gravel Compactor, (20) Stihl TS400 & TS360 Masonry Saws, (4) Chain Saws, Large Assortment of Bucket Teeth for Dozers & Shovels, (15) Assorted Portable Fuel Tanks From 50-90 Gallons, Electric Fuel Pumps & Many Other Related Items

## CONSTRUCTION MATERIAL

Large Quantities Approx. 1,000's of Pieces of Assorted Plumbing Items in PVC, Cast Iron & Concrete; Elbows, Connectors, Gate Valves, Corrugated Drain Pipe, Galvanized Pipe and Culvert, Other Fittings and Accessories

Approx. (200) Pieces Precast Concrete Manholes Raging in Dia. From 38" - 96" and In Various Lengths  
Approx. (100) Pieces 36" X 36" Square Precast Concrete Catch Basins

Approx. (1,000) Pieces Precast Concrete Culverts In Dia. From 12" to 48"



(6) Trimble GPS Systems



Huge Quantity Contractors Tools



Huge Quantity Survey Equipment

## FARM EQUIPMENT

Whits Model 445 Hydraulic Lift Pull-Behind Chisel Plows

Whits Model 435 Hydraulic Lift Pull-Behind Chisel Plows

16' Wide Mfg. Unknown Pull Behind Chisel Plow

Rome Plow Model TAW-20-S Farm Disc

12' Wide Rome Pull Behind Scraper

12' Wide Work Brow Model JD-544 Screw Box; S/N 113649-1-1

96" Wide John Deere PTO Driven 3-Point Hitch Roto-Tiller

96" Wide York Model "Pro" Tractor Hitch Soil Rake

## SEEDING EQUIPMENT

1995 Finn Model T-90-TD Pull Behind Hydro Seeder; S/N RL2040, Finn Model D0733 - 9" Diesel Powered Water Pump, Approx 100' of 1-1/2" Discharge Hose, 800 Gallon Capacity Tank, Pintel Hitch, Electric Brakes & Lights

Finn Model MSW-27 Pull Behind Straw Blower Erosion Control System; S/N 1975, 6-Cyl. Diesel Engine, Unit 658

Land Pride Model 25-20 Solid Stand Grass Seeder; Ground Driven, 3-Point Hitch, 120" Wide Front Compactor Drums, 16-Discharge Chutes **SEE PHOTO**

ABI Model M-44 Irrigation Hose Reel/ Sprinkler; S/N 031, 3" Discharge Hose

10' Wide Dual Axle Rubber Belt Low Pack Spreader; Chain Driven Spreader

Large Quantity of Wood Fiber Paper Mulch & Tube Package Straw Water Diversion Material

## GPS SYSTEMS

Trimble GPS Rover System; Trimble TSCE Survey Controller, S/N 00016280, Trimble 5700 GPS Receiver, S/N 0220284933, Trimble Zephyr Antenna, S/N 12286462, Trimble Mounting Stand

(3) Trimble Sitionation Automatic Grade Control Systems; (2) Trimble MS860II GPS Receivers, S/N 0220291070 & 0220315540, (1) Trimble MS860 GPS Receiver, (3) SV-170 Control Boxes, S/N 4204B11316, 4411B32456 & N/A, (3) Trimble Sitenet 900 GPS Radio Modems, S/N 4126A3480, 0220312241, 0220293221, (6) Trimble Ant 13" GPS Antennas, S/N 0220300121, 0220264965, 0220300245, 0220241001, 0220298416, 0220298801, (6) Trimble SV Mast Assemblies, (6) Trimble Sitionation Light Bars, S/N 01CB001043, 01CB001051, 03CB003262, 03CB002587, 03CB002591, N/A

(2) Trimble GPS Base Stations: (2) Trimble MS750 GPS Receivers, S/N 0220269693 & 0220332333, (2) Trimble Ant 13" GPS Antennas, S/N 0220328332 & 0220265619, (2) Trimble Sitenet 900 GPS Radio Modems, S/N 0220284192 & 0220333174

## SURVEY EQUIPMENT

(24) Pieces Spectra Various Type & Model Survey

Equipment Consisting of; (4) Spectra Physics Model 1212 Line Levels, (2) Spectra Precision Laser Plane Self Leveling Lasers w/ Apache Lightning Laser Detector, Spectra Precision LL500 Self-Leveling Laser Level w/ HR 500 Laser Receiver, (2) Spectra Precision Model EL-1 Electronic Levels w/ Apache Lightning Laser Detector & (1) Spectra Physics Model 1077 Level Eye, Spectra Precision Dialgrade, (2) Spectra Precision Laserplane Self Leveling Laser Levels w/ (1) Apache Lightning Laser Detector & (1) Spectra Precision Model 1275 Laser Eye, (2) Spectra Precision Dialgrades, (2) Spectra Precision Laserplane Self Leveling Laser Levels w/ Spectra Physics Model 1077 Level Eye, Spectra Physics Model RDZS Laserplane Self Level Laser, (2) Spectra Physics Model R25-S Laserplane Self Leveling Lasers, Spectra Precision Model 1250 Dialgrade w/ Spectra Precision Model 1266 Wireless Remote Line Control, Spectra Physics Model L-500 Self Leveling Laser Level, Spectra Physics Model 1145-1 Laser Transmitter w/ Spectra Physics Model 1175 Laser Eye, Spectra Precision Grade Eye, Spectra Physics Model CBZCED Laserplane Control Box And Other Related Items

Other Survey Equipment Consisting of; Berger Model 200B Leveling Instrument, (2) Berger Model 203B4 Leveling Instruments, Berger Model 110C Survey Level, Realist David White Instruments Universal LT8-300 Level/Transit, David White Instruments Model Meridian 8830 Survey Level, (2) David White Instruments Survey

Levels, David White Model 8300 Survey Level, (8) Toevane Model CL-600A Soil Test Kits, AGL Model LZXS 1234 EAGL3 Laser Transmitter w/ Simmons Scope, Schneider Model BD-7F Survey Level, (5) Level Tripods And Other Related Items

## GARAGE EQUIPMENT

Approximately 250 Galvanized Steel Collapsible Wire Baskets; Sizes From 42" X 42" to 36" X 80", See Catalog For Exact Quantity

Manufacturer Unknown Seven-Station Lube, Fuel & Air Filling Station; (3) American Lubrication Equipment Filling Nozzles w/ Digital Read Outs, (7) Assorted Model Aro Pneumatic Pumps, American Lubrication Equipment Fill Nozzle w/ DRO, (5) Hand Primed Pumps

9 Ton Challenger Model AB-1346 Auto Lift; S/N 162, 142" X 252", (2) 22" X 252" Platform Ramps, (2) Air Scissor Jacks, Waste Oil Tank **SEE PHOTO**

Toolroom Machinery Consisting of; 1-1/2 HP Bridgeport Vertical Milling Machine; 155535, 9" X 42" T-Slotted Table, 16" X 54" Pratt & Whitney 16" Model C Lathe Engine Lathe; S/N 26579, 15" 3-Jaw Chuck, 50 Ton Dake Model 6-575 Hydraulic Shop Press; S/N157575, 25 Ton Banner Model 67621 Hydraulic Shop Press; S/N N/A, 60 Ton Lempeco Model 400A Hydraulic Shop Press; S/N 1588, 20 Ton US Tool Hydraulic Shop Press; S/N 6398, 9" X 16" Jet Horizontal Band Saw, W. Robertson Model 4 Horizontal Band Saw, Pure Wash Systems Model 2175E Parts Washer; S/N 97057, 36" Dia. X 52" High Wash Basin,

Large Quantity Garage Equipment Consisting of; 25 HP Champion Model HR10D-25 Horizontal Tank Air Compressor, 5 HP Ingersoll Rand Model 253D5 Type 30 Horizontal Tank Air Compressor, 2 Ton X 20' Span Jones & Laughlin Bottom Running Overhead Bridge Crane, 2 Ton Budgit Jib Crane, Coates Model 4040A Tire Changer, Century Model 87600 Anti Freeze/Coolant Recycling System, Miller Deltaweld 450 Arc Welding Power Source, Hobart Model Handler 120 Wire Feed Welder, Miller Model Goldstar 300 SS Arc Welding Power Source, Hypertherm Powermax 1650 G3 Series Plasma Cutting System, (3) Acetylene Torch Carts, 48" X 115" HD Steel Welding Table, RSI Model Port Ozone Refrigerant Recycling System, 1,000 LB Napa Transmission Jack, (2) Napa Auto Parts Cabinets, (13) Weather Guard Pick-Up Bed Tool Boxes, (2) Tire Racks, (3) 10 Ton Hydraulic Jacks, 3-1/2 Ton Hydraulic Jack, 2 Ton Hydraulic Jacks, (4) Toe Jacks, 28" X 72" HD Steel Table, John Deere & Master Thermostat Propane Space Heaters, Tuff Power Parts Washer, (8) Air Hose Reels, Shop Fans, (40) Motorola CB Radios, Hotsy 2200 PSI Q45 Series Power Washer, Henan 6YL "A" System Screw Oil Press, Hand Tools, Pneumatic Tools, Lube Guns, Fire Extinguishers, (22) Quality Mfg Trailer Hitches For Various Models Of Pick-Ups, Hoses, Chains, and Other Related Items

Garage & Maintenance Supplies Consisting of; Truck Tires, (7) Engine Blocks, Drive Shafts, Carburetors, Bumpers, Exhaust Pipes, Windows, Doors, Hoods, Oil Filters, Air Filters, Wipers Seals, Gaskets, Hoses, Belts, 330 Gallons SAE 30 Transmission Lubemaster TO-4, 330 Gallons 5W-20 Motor Oil, 300 Gallons Anti Freeze Pre Mix 50/50

## OFFICE EQUIPMENT & FURNITURE

Office Furniture & Equipment Consisting of; (6) Wood Desk Sets, (15) 4-Drawer Letter Cabinets, (13) 4-Drawer Lateral Cabinets, (12) 3-Drawers Legal Cabinets, (6) Marline 5-Drawer Blueprint Files, 4' X 10' Wood Conference Table, (90) Metal Folding Chairs, Meilink 64"H X 42"W X 32"D Safe, Follet Model 62114 Ice Machine, Manitowoc Series 60C Ice Machine, Dixie Model DNCB 522MC/G Pop Machine, Dale Earnhardt Coca Cola Nascar Signature Edition and Many Other Related Items

Office Machines & Computer Equipment Consisting Of; OCE 7055 705X Blueprint Printer, Xerox Work Centre 24, HP Design Jet 450C Color Blueprint Printer, Xerox FFA-3 Printer (2003), Ricoh Afico 1515MF C/F/S/P, Xerox Document Centre 420DC, Dell & IBM P4 Desktop Computers w/ (7) Flat Screen Monitors, OKI Microcline 395 Printer, OKI 341C Printer, Dell Poweredge 2800, 2600, & 4300 Servers w/ Flat Screen Monitors, (6) 14"-21" TV Monitors & Many Other Related Items

Tadiran Telecom Business System Phone System; Ringer Power Supply RPS, Peripheral Power Supply PPS, (2) Proctor 4 Line Loop Adaptor, Proctor OPX Long Loop Adapter, Best Power Supply, (20) Premier Phones



Air Compressors and Generator Systems



9 Ton Challenger Model AB-1346 Auto Lift



Sreco-Flexible Model HV2000TM Hy-Velocity Truck Mounted Water Jet Flushing System



Huge Construction Material Inventory



Huge Quantity Concrete Forms



# FRIDAY, MARCH 27TH - 9:00 AM



1991 and 1989 Kenworth T600 Flat Bed Equipment Hauling Trucks



2002 Mack Model CH 602 Maintenance Truck



(5) Road Tractors By Kenworth and Peterbilt



1997 International Model 4900 DT 466E Van Body Lube Truck



(3) Water Trucks By Kenworth and Ford



Ford Crane Truck and International Bucket Truck



Westinghouse Model J34WE34A Gasoline Powered Jet Engine Dryer



2001 Ford F-650XLT Flat Bed Truck



Partial View Passenger Vehicles



(2) Monte Carlo Nascar Edition Collector Cars

## TRUCK MOUNTED JET ENGINE DRYER

Westinghouse Model J34WE34A Gasoline Powered Jet Engine Dryer; Mfg. 58J59-17, Bureau No. WE201638, 1,000 Degrees Celsius Max Exhaust Temp, 100-Gallon Stainless Steel Gasoline Tank, (4) 12-Volt Batteries, 102" Wide Drying Manifold **SEE PHOTO**

1995 Dodge Flat Bed Truck; Vin 1B6MC36C15S147323, 344,943 Miles Showing, 6-Cylinder Cummins Turbo Diesel Engine, Automatic Transmission, 12' Bed, Unit 207

## FLAT BED TRUCKS

1991 Kenworth Model T600 Flat Bed Equipment Hauler Truck; V/N 1XKADR9X3MS558257, 91,090 Miles Showing (Over), 15-Speed Eaton Transmission, 350 HP Detroit Diesel Engine, 8' Wide X 15' Long Flat Bed w/ 65" Dovetail Ramps, Unit 154

1989 Kenworth Model T600 Flat Bed Equipment Hauler Truck; V/N1XKADB9X0KJ530846, 16,902 Miles Showing (Over), 15-Speed Eaton Transmission, Cummins Diesel, 8' Wide X 16' Long Flat Bed w/ 60" Dovetail Ramps, Unit 779

2001 Ford F-650XLT Flat Bed Truck; V/N 3FDW65Y31MA17282, 20' Aluminum, 26,000-lb. GVRW, 6-Speed Transmission, 24 Value Cummins Engine, AM/FM, Air, Single Axle, MBA **SEE PHOTO**

## ON-SITE LUBE TRUCK

1997 International Model 4900 DT 466E Van Body Lube Truck; V/N 1HTSDAALXWH499401, Unit No. 286, 177,643 Miles, 6-Speed Manual Trans, Air Brakes, International Diesel Engine, 24' Van Body w/ Roll-Up Door, Anthony Hydraulic Lift Gate, 8-Reel Lube Dispenser System For Hydraulic Oil, Various Oil Weights, Coolant, (8) Assorted Holding Tanks, Auto Crane Model AC 30A Hydraulic Driven Air Compressor, Oil Holding Tank **SEE PHOTO**

## WATER TRUCKS & RELATED

1994 Kenworth Model W900 Tandem Axle Water Truck; Unit 226, V/N 1KXWDB9XRR620829, 714,663 Miles, 15-Speed Fuller Transmission, Cat 6-Cylinder Diesel Engine, 5,000 Gallon United Water Tank, Berkley Model B3ZRM5 4X3 Centrifugal Cast Iron Pump at 750 GPM at 60 PSI, Chelsea H.D. Two Gear PTO, Front Mounted Slot Flusher Nozzle System

1981 International Model F1924 6X4 Tandem Axle Water Truck; Unit 485, V/N 2HTAF1922BCA19406, 33,657 Miles Showing (Over), 5-Speed Manual Transmission, Gas V8 Engine, Berkley No. 4E156-G56196 PTO Drive Pump, 3,500 Gallon Steel Tank, Front Flusher & Side Adjustable Pattern Nozzles

1983 International Model S1700 Single Axle Water Truck; Unit 112, V/N 1HTAA1724EHA15355, 174,072 Miles, 5-Speed Manual Transmission, 135 HP Cat Diesel Engine - Model 1-1140, 2,500 Gallon Progress Model M-40 Stainless Steel Tank, No Load/Off Load Pump

1987 Ford L-8000 Vac All Truck; Unit 182, V/N 1FDYR82A8HVA46733, 21,398 Miles, Automatic Transmission, 7.8 Liter Ford Inline 6-Cylinder Turbo Charge Diesel Engine, Vac All Model E4010 Vac System, S/N 3215, 1-1/2" Hose, 8" Vac Hose

Secco-Flexible Model HV2000TM Hy-Velocity Truck Mounted Water Jet Flushing System; S/N WHT911326, Hours: 350, Max 3,000 PSI, Ford Model CSG-6491-6007-ZA Engine, Not Mounted on Truck **SEE PHOTO**

## DUMP TRUCKS

2006 Ford F-650 Super Duty XL Single Axle Dump Truck; Unit 362, V/N 3FRWF65S66V246446, 49,005 Miles, Caterpillar C7 Acert Inline Six Diesel Engine, Allison Automatic Transmission, Air Brake, 10'L X 8'W X 3'H Crysteel Tipper Series Dump Body, Aluminum Side Compartments

2006 Ford F-650 Single Axle Dump Truck; Unit 395, V/N 3FRNF65R67V431087, 20,610 Miles, Caterpillar C7 Acert Inline Six Diesel Engine, Automatic Transmission, 10' X 8' X 3' Airflo Pro Max Dump Body

2005 Ford F-650 Super Duty XL Single Axle Dump Truck; Unit 386, V/N 1TKV016224B046982, 36,595 Miles, Caterpillar C7 Inline Acert Six Diesel Engine, Automatic Transmission, 10' X 8' X 2' Crysteel Dump Body

1992 Ford F-350 Single Axle Dump Truck; Unit 672, V/N 1FDKF37H6NNA12938, 77,749 Miles, 5.8 EF1 Gasoline Engine, 4-Speed Transmission, 7' X 9' X 2-1/2" Dump Bed

## ROAD TRACTORS

1992 Kenworth Model T-800 Twin Screw Road Tractor; V/N 1XKDD6X4N5570169, 931,539 Miles, 15-Speed Eaton Fuller Transmission, 2-Speed Axle, Cummins Diesel Engine, Headache Rack, Tool Box, Unit 133

1989 Kenworth Model T-800 Twin Screw Road Tractor; V/N 1XKDD6X7KJ531070, 203,174 Miles Showing (Miles Over), 15-Speed Eaton Fuller Transmission, 2-Speed Axle, Caterpillar Model 340 6B Engine, S/N 4MG52104, Mount Aluminum Headache Rack, Tool Box, Unit 681

1990 Kenworth Model T-600A Twin Screw Road Tractor; V/N 1XKAD29X2LJ531918, 162,282 Miles Showing (Miles Over), 15-Speed Eaton Transmission, 2-Speed Axle, Cummins Diesel Engine, Unit 780

1989 Kenworth Model T-800 Twin Screw Road Tractor; V/N 1XKAD29X8KJ529783, 15-Speed Eaton Transmission, Cummins Diesel, Unit 680



(3) 2006-2005 Ford F-650 XL Dump Trucks



(3) 2006-2003 Ford F-350 Utility Bed Service Trucks



(5) 2006-2004 Ford F-550 Super Duty XL Walk In Utility Bed Service Trucks

## 1990 Peterbilt Tandem Axle Road Tractor; V/N

1XPBDE9X9LN300667, Equipped w/ Vacuum Pump Used w/ Dry Material Storage Trailers, 588,475 Miles, 9-Speed Perkwell Transmission, 325 HP Cat Diesel, S/N 2YGO6958, Unit 336

**1973 Kenworth Model W-925 Tandem Axle Road Tractor;** V/N 13X860, 10-Speed Eaton Transmission, Cummins Diesel, Unit 205

## MAINTENANCE TRUCKS - CRANE & BOOM

**2002 Mack Model CH 602 Maintenance Truck;** S/N 1M2AA19C12W025764, 220,861 Miles, Unit 257, Mack Model E7-427 TECH, 427 HP 6-Cylinder Diesel Engine @ 1800 RPM, 10-Speed Manual (Overdrive) Fuller FRO-1521C Transmission, Eaton Fuller CL7982 15.5" Two-Plate Clutch, Jacobs J-Tech Engine Brake

SEE PHOTO

- **Auto Crane Model 66K Service Bed w/ Hydraulic Crane;** S/N BG X012-10-01, 25' Boom Extension, Max Lift: 9000 Lb @ 75 Degree Angle & 2,475 Lb @ 25' Boom Extension, Hydraulic Outriggers, Ramsey Winch, Pendant Control
- **300 Amp Miller Trailblazer Gas Powered Welder/ 10,000 Walt Generator**
- **Van Air Model 60 PTO Driven Air Compressor;** S/N 7485860, 150 PSI

**1995 GMC Topkick Single Axle Maintenance Truck;** Unit No. 251, V/N 1GDJ6H1JXSJ523639, 167,288 Miles, 6-Speed Manual Trans, Caterpillar 6-Cylinder Diesel Engine, 16' Devers Utility Bed, Auto Crane Model 3203 PR Cable Triple Boom Crane, S/N 320303-226 AS-09-91

**1986 Ford Single Axle F-800 Crane Truck;** V/N 1FDPK84A6JVA17072, Unit 599, Miles Over, Ford 210 V8 Diesel Engine, 5-Speed Transmission, 2-Speed Axle, Chelsea PTO System, National Model 556 Cable Crane, 360 Degrees Rotation, 21' 3-Part Jib, 25,000 Max Pull w/ 4-Part Line, Hydraulic Out Riggers, Unit 686

**1981 International Model 1724 Single Axle Bucket Truck;** V/N 1HTAA17B0BH32619, Miles Over, Manual Trans, 4-Speed Axle, 8-Cylinder Gas Engine, Platec Service Bed, Hi-Range Hydraulic Work Bucket, Hydraulic Out-Riggers, Unit 686

## SERVICE TRUCKS

**2008 Ford F-550 Super Duty XL Flat Bed Service Truck;** Unit 394, V/N 1FDDAF56R28EB30703, 31,095 Miles, 6.4 Liter V-8 Power Stroke Diesel Engine, Automatic Transmission, 8' X 9' Bed Size

(2) **2006 Ford F-550 Super Duty XL Utility Bed Service Trucks;** Unit 378, V/N 1FDDAF56P16EC51444 w/ 43,047 Miles, Unit 359, V/N 1FDDAF56P26EA14848 w/ 73,745 Miles & Ladder Rack, Both Equipped w/ 6.0 Liter Power Stroke V-8 Turbo Diesel Engine, Automatic Transmission, 90 Gallon Fuel Tank w/ Electric Pump, Utility Bed

**2006 Ford-550 Super Duty XL Walk-In Utility Bed Service Truck;** Unit 377, V/N 1FDDAF56936EC51445, 44,753 Miles, 6.0 Liter Power Stroke V-8 Turbo Diesel Engine, Automatic Transmission, Reading Walk-In Type Utility Bed w/ Side Compartments

**2005 Ford F-550 Super Duty XL Walk-In Utility Bed Service Truck;** Unit 360, V/N 1FDDAF56PA6EA14849, 74,671 Miles, 6.0 Liter Power Stroke V-8 Turbo Diesel Engine Automatic Transmission, Reading Walk-In Type Utility Bed w/ Side Compartments

**2005 Ford F-550 Super Duty XL Walk-In Utility Bed Service Truck;** Unit 340, V/N 1FDDAF56P15EB52444, 63,003 Miles, 6.0 Liter Power Stroke V-8 Turbo Diesel Engine, Automatic Transmission, Reading Classic Walk-In Type Utility Bed w/ Side Compartments

(2) **2004 Ford-550 Super Duty XL Walk-In Utility Bed Service Trucks;** Unit 327, V/N 1FDDAF56P24ED34748 w/ 111,422 Miles, Unit 328, V/N 1FDDAF56P44ED34749 w/ 77,907 Miles, 6.0 Liter Power Stroke V-8 Turbo Diesel Engine, Automatic Transmission, Reading Walk-In Type Utility Bed w/ Side Components

**2003 Ford F-550 Super Duty XL Utility Bed Service Truck;** Unit 304, V/N 1FDDAF56P03ED53829, 129,416 Miles, 6.0 Liter Power Stroke V-8 Turbo Diesel Engine, Automatic Transmission, Utility Bed, 100 Gal Fuel Tank w/ Electric Fuel Pump, Ladder Rack

**1998 Chevrolet Cheyenne 1500 Utility Bed Service Truck;** Unit 726, V/N 1GBGC34K1JE199278, 297,123 Miles, 5.7 Liter V-8 Gasoline Engine, Automatic Transmission, Utility Bed

**1996 Chevrolet Cheyenne 2500 Utility Bed Service Truck;** Unit 214, V/N 1GBGC24RXTZ111315, 295,260 Miles, 5.7 Liter V-8 Vortec Gasoline Engine, Automatic Transmission, 90 Gallon Fuel Tank w/ Tuthill Electric Pump, Utility Bed w/ Cover & Side Compartments

**1996 Chevrolet Cheyenne 1500 Utility Bed Service Truck;** Unit 250, V/N 1GCEC14M7TZ118160, 198,718 Miles, 5.3 L Vortec V-8 Gasoline Engine, Automatic Transmission, Utility Bed, 50 Gallon Fuel Tank w/ Electric Pump

**1995 GMC 3500 HD Utility Flat Bed Service Truck;** Unit 191, V/N 1GDKC34F0SJ15946, 284,874 Miles, 6.5 Liter Turbo V-8 Diesel Engine, 5-Speed Transmission, 12' Flat Bed w/ Weather Guard Hi-Side & Under Bed Boxes

**1994 Chevrolet 3500 Utility Bed Service Truck;** Unit 217, V/N 1GBGC34K9RE217182, 257,456 Miles, 5.0 Liter Vortec V-8 Gasoline Engine, Automatic Transmission, Utility Bed, 90 Gallon Fuel Tank w/ Electric Pump

**1991 Chevrolet Cheyenne 1500 Flat Bed Service Truck;** Unit 799, V/N 1GBUL34LMEZ178492, 250,823 Miles, 5.7 Liter Vortec V-8 Gasoline Engine, Automatic Transmission, 8' X 9' Utility Flat Bed

**1988 Chevrolet Cheyenne 2500 Utility Bed Service Truck;** Unit 214, V/N 1GBGC24RXTZ111315, 295,260 Miles, 5.3 Liter Vortec V-8 Gas Engine, Automatic Transmission, Utility Bed, 90 Gallon Weather Guard Fuel Tank w/ Tuthill Electric Pump

**1979 Ford F9000 Utility Bed Service Truck;** V/N 162JW907H8AJGJ, 291,555 Miles, Cummins 335 Diesel, Eaton Roadmaster 8-Speed Transmission, Tool Box Body, 43,000 GVRW, MBA

**Ford F-700 Single Axle Truck;** Unit 784, V/N F70HVHD7822, Ford Model 370-2V V8 Gasoline Engine, 68,611+ Miles, No Bed

## TRAILERS - ALL TYPES

**2000 - 51' Talbert Model T (4) DW-55SA-1-TI (EC 3/1)-60 Triple Axle Detachable Neck Trailer;** V/N 4DFSK570Y1019465, 50 Ton Capacity, 10' Upper Deck, 25' Lower Deck, 16' Rear Deck, Wood Deck, 275/R 22.5 Tires, Unit 312

SEE PHOTO

**1998 - 43' Witzco Challenger Model RG-35 Detachable Gooseneck Trailer;** V/N 1W8A11D27WS000312, 70,000-lb. Capacity, Tandem Axle, 22' Well, Electric Start Pony Motor, Lumber Deck, (12) 12" Outriggers Each Side, MBA

SEE PHOTO

**1988 - 43' Trail King Dual Axle Detachable Neck Trailer;** V/N A2JM010612, 10' Upper Deck, 25' Lower Deck, 8' Rear Deck, Wood Deck, 255/70R 22.5 Tires, Unit 487

(2) **1050 Cu. Ft. Fruehauf Three-Compartment Dry Concrete Lime Transport Trailers;** V/N UNV624805 (1979), UNR470805 (1973), Each Equipped w/ 3-Top Load Components or Bottom Vacuum Loading, Each w/ Bottom Offload Tube

SEE PHOTO

**1970 - 40' Fruehauf Model FBB-F2-40-ST Refrigerated Dual Axle Trailer;** S/N HPM303701, Thermo King 500 Refrigeration Unit

**1977 - 40' Dolsley Model DDG7W-I-276 Dual Axle Drop Deck Trailer;** S/N 123681, 10' Upper Deck, 30' Lower Deck, 55,000 Lb Capacity, Wood Deck, Unit 50

**2007 - 25' Cornelius Model 20+510KHD Gooseneck Dual Axle Drag Trailer;** Vin 4MJFG25287E046909, 10 Ton Capacity, 20' Bed, Wood Bed, Unit 405

**2002 - 18' Cronkhite Dual Axle Flat Bed Equipment Trailer;** S/N 2600LIVA, 18' Wood Deck, 80" Wide, 12,300 Lb Capacity, Pintel Hitch, 48" Dual Ramps, Unit 295

**25' Dynaweld Dual Axle Drag Trailer;** V/N 1GTGR34K4HJ521083, 20' Bed, Wood Deck, Pintel Hitch, 60" Dual Ramps, Unit 683

**1995 - 22' Hurst Model 9K Dual Axle Drag Trailer;** Vin 1H9T52225S1057096, 9 Ton Capacity, 17' Bed, Wood Deck, Pintel Hitch, 60" Dual Ramps, Unit 715

**2004 - 16' Conrail C-12 Dual Axle Flat Bed Trailer;** V/N 4KNU16235L160670, 14,950 Lb Capacity, Pintel Hitch, Wood Deck, 48" Dual Ramps

**1998 - 15' Cronkhite Dual Axle Flatbed Equipment Trailer;** S/N 473271926W1110650, Wood Deck, 80" Wide, Pintel Hitch, 48" Dual Ramps, Unit 147

**1973 - 11' Charles Machine Works Model S5A Ditch Witch Single Axle Trailer;** V/N 1DS000089P17K0737, 6,000 Lb Capacity, Tilting Bed, Unit 797

**12' Trailking 12U Dual Axle Equipment Trailer;** 12' Bed, Tire Rack, 84" Dual Fold Down Ramps, Wood Deck, Unit 342

**9' Johnson Model M105AZ Single Axle Military Equipment Trailer;** S/N 06-02468, 3,000 Lb Capacity, Pintel Hitch

**7' Single Axle Equipment Trailer;** S/N N/A, 4' X 7' Bed Pintel Hitch

**1977 - 48' Bud Model YS25420A56 Dual Axle Blanket Trailer;** S/N 13984

**48' Fruehauf Blanket Trailer;** S/N N/A



(13) 2008-2003 Ford F-250 Super Duty XL Pick-Ups with Tool Boxes and Fuel Tanks



1998 - 43' Witzco Challenger Model RG-35 Detachable Gooseneck Trailer



2000 - 51' Talbert Model T (4) DW-55SA-1-TI (EC 3/1)-60 Triple Axle Detachable Neck Trailer



(2) 1050 Cu. Ft. Fruehauf Three-Compartment Dry Concrete Lime Transport Trailers



Partial View Various Equipment and Utility Trailers

# PUBLIC AUCTION

CEASED OPERATIONS - ON THE PREMISES OF  
**MILLER BROTHERS EXCAVATING, INC.**

7900 South Kessler Frederick Road  
 Tipp City, Ohio 45371  
 Just North Of Dayton Off I-70

**SALE DATE:**  
**Friday, March 27th**  
**STARTING: 9:00 AM**

**INSPECTION:**  
 Wednesday, March 25th &  
 Thursday, March 26th  
 9:00 AM to 4:00 PM



**Cincinnati Industrial Auctioneers Inc.**

2020 DUNLAP ST., CINCINNATI, OHIO 45214  
 PHONE (513) 241-9701 / FAX (513) 241-6760  
 INTERNET: [cia-auction.com](http://cia-auction.com)



(2) Caterpillar 627F Scrapers



Cat & John Deere Dozers



(10) IR & Cat Compactors



Huge Vehicle Fleet

FIRST CLASS MAIL!

PRE-SORT  
 FIRST CLASS  
 U.S. POSTAGE  
**PAID**  
 CINCINNATI, OHIO  
 PERMIT NO. 3593

**Important Mail**

TO BE DIRECTED TO THE ATTENTION  
 OF EXECUTIVE PERSONNEL



**FRIDAY, MARCH 27TH**

# PUBLIC AUCTION

CEASED OPERATIONS - ON THE PREMISES OF  
**MILLER BROTHERS EXCAVATING, INC.**

7900 South Kessler Frederick Road  
 Tipp City, Ohio 45371  
 Just North Of Dayton Off I-70

## IMPORTANT NOTICE:

Although information has been obtained from sources deemed reliable, the auctioneer makes no warranty or guarantee, expressed or implied, as to the accuracy of the information herein contained. It is for this reason that buyers should avail themselves of the opportunity to make inspection prior to the sale. This brochure is intended to provide general information of the equipment being offered and is subject to errors, omissions, additions or deletions. Please check with the Auctioneer's Office for a final listing. Items offered may or may not necessarily be sold as described and/or photographed in this brochure.

MAIL BIDS ACCEPTED WITH A 25% DEPOSIT

## DIRECTIONS

From I-75 Proceed West On I-70 Approx 2-3/4 Miles to Exit 32, Airport Access Rd. Vandalia. Proceed North Approx 1-1/2 Miles to the US-40 Exit, Englewood/Vandalia. Turn Left (West) and Proceed to Approx 2 Miles to Frederick Pike. Turn Right (North) Frederick Pike Becomes Kessler-Frederick and Proceed Approx 2-1/2 Miles to Miller Brothers on Left Side, Across From Church. Parking is very limited at the auction site; Off Site Parking will be located at Millers Grove Approx. 1/2 Mile South of the Sale Site on Kessler Frederick Rd. Watch for Auction Parking Signs and Arrows. Shuttle service will be available from there.

## AUCTIONEERS

Cincinnati Industrial Auctioneers - License No. 63-1983-10439  
 Jeffrey L. Luggen - License No. 57-1983-33789  
 Jerome A. Luggen - License No. 62-1983-33799  
 Joseph M. Luggen - Apprentice Auctioneer  
 BidItUp Auctions Worldwide - Ohio License No. 2005000218  
 Steven Mattes - Ohio License No. 2005000217



## TERMS OF SALE

All equipment described herein will be sold "as is", "where is" to the highest bidder or bidders for cash in accordance with our regular terms and conditions of sale. Unless other satisfactory arrangements are made, a **25% deposit** in cash, certified or cashier's check payable to Cincinnati Industrial Auctioneers, Inc., is required on all purchases. Firm and personal checks accepted only if accompanied by a letter from your bank guaranteeing your funds. All sales are subject to state and/or local taxes unless a signed exemption form is presented at the time of purchase. **All balances are due at the conclusion of the sale.** No merchandise may be removed while the sale is in progress. **All bidders must comply with our Standard Terms of Sale**, copies of which will be available at the sale site or can be obtained from our website.

**A 10% BUYER'S PREMIUM IN EFFECT FOR THIS SALE.**

SALE UNDER THE MANAGEMENT OF

**Cincinnati Industrial Auctioneers Inc.**

2020 DUNLAP ST., CINCINNATI, OHIO 45214  
 PHONE (513) 241-9701 / FAX (513) 241-6760  
 INTERNET: [www.cia-auction.com](http://www.cia-auction.com)



IN CONJUNCTION WITH

**BIDITUP™**

AUCTIONS & APPRAISALS WORLDWIDE

11426 VENTURA BLVD., STUDIO CITY, CA 91604  
 PHONE (818) 508-7034 / FAX (818) 508-3025  
 INTERNET: [www.biditup.com](http://www.biditup.com)