



"Your One Stop Solution Provider"



*"Through these doors - everyday - pass this country's finest tradespeople."*

Our mission is to create an **IMPACT** with our clients by striving to be the recognized leading service integration provider for production facility enhancements within the Food, Liquid Processing, and Pharmaceutical industries.



# About Tri-Mach Group Inc.



## *Focused on Food Safety Through Innovation and Quality Equipment Manufacturing*

Since 1985, Tri-Mach Group has been an industry leader in the food, liquid processing, and pharmaceutical industries. With corporate headquarters located in Elmira, Ontario, and other locations within North America, Tri-Mach Group is a full service multi-trade solution provider ready to meet any manufacturing, facility upgrade, or equipment integration need. Tri-Mach Group is most noted for their Ever-Kleen® Sanitary Conveyors introduced in 2008, which revolutionized the food industry with its innovative sanitary technology.

We are committed to providing our customers with highest-quality sanitary stainless steel equipment on the market, combined with best-in-class service. As your one-stop solution provider, we offer a comprehensive suite of services, including millwrighting, electrical, stainless steel fabrication, design engineering, custom machining, packaging automation, and more. Our experienced management team and tradespeople are passionate about what they do, and their top-quality craftsmanship reflects this passion.

The Tri-Mach Group name is built on dependable service, hard work, dedication, and the innovation required to meet the demanding challenges our customers face. Our reputation is the key to our ongoing success, working locally, nationally, and internationally.

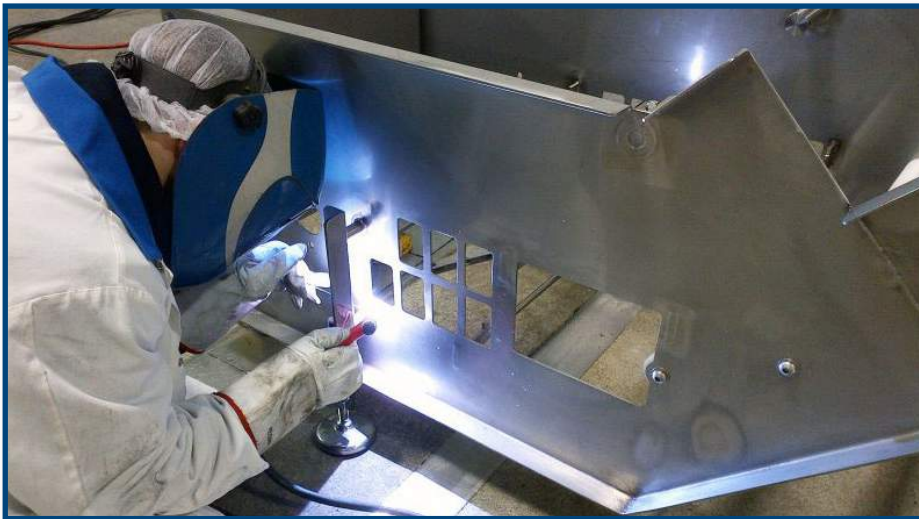
# Qualifications

## Our Health and Safety Program

We are number one in the industry for a good reason: food and work safety is at the core of everything we do. Our dedicated health and safety personnel perform site visits, implement and oversee our comprehensive safety programs, and ensure all our certifications and training are up to date. These practices create the highest level of safety on each project we take on, offering the customer maximum assurance.

Food safety guidelines are an integral part of our policies and procedures. They are reviewed on a regular basis to ensure compliance with the latest food safety directives.

All Tri-Mach Group employees are HACCP trained by the GFTC, ensuring our products and equipment follow all safety directives.



## Certifications

- Aerial Lift & Articulating Lift
- AODA
- Certified System Integrator
- Confined Space
- Fall Arrest
- First Aid
- Forklift
- HACCP & GMP
- Lock Out
- WHMIS
- Working at Heights
- WSIB

## Associations



3A Sanitary  
Standards Inc.



American Meat  
Institute



Canadian Food  
Inspection Agency



Canadian Welding  
Bureau



Electrical Contractors  
Association of Ontario



Electrical Safety  
Authority



Construction Safety  
Association of Ontario



Guelph Food  
Technology Center



Technical Standards  
& Safety Authority

# Industries We Serve



## Meat & Poultry



When working with raw or cooked meat, sanitary design is a top priority to prevent the growth of harmful bacteria and product contamination. Our Ever-Kleen® line of products are tailored to the meat and poultry industry, ensuring maximum food safety protection for all your products.

## Bakery



Handling baked goods entails an array of unique obstacles and product specific requirements. Our team will work with you to find a solution that maintains product integrity, while also increasing your efficiency and quality.

## Confectionary



Processing and packaging within the confectionary industry can be a sticky procedure. Our various non-stick sanitary conveyors will create a smooth and reliable process to bypass any issues which would normally delay production.

## Frozen Foods



Our frozen processing and packaging solutions are designed for maximum food safety protection. Tri-Mach Group's solutions ensure product temperatures, orientation, integrity, and line speeds are at the forefront. No matter what your requirement, Tri-Mach Group will find a solution that is perfect for you.





## Fruits & Vegetables



Fruit and vegetables are fragile and require delicate handling, with a focus on food safe equipment design. To mitigate food safety risks and ensure superior product quality, look to Tri-Mach Group to design your next cutting, sorting, processing, or packaging solution.

## Liquid Processing



After years of experience working in the industry, our solutions will ensure all your liquid filling and packaging processes are efficiently designed and robust for 24/7 operation. From soups to juices, our sanitary systems will ensure a safe final product for your consumer.

## Dairy



With over 30 years of experience within the dairy industry, depend on Tri-Mach Group to create a custom solution which will adhere to all dairy regulations. From filling to streamlining packing, we have done it all.

## Pharmaceutical & Nutraceutical



Processing within the pharmaceutical industry requires the highest accuracy and regulatory knowledge to ensure each final product is safe for customer use. Our processing and packing solutions work to avoid any cross contamination, providing maximum safety and quality.

# ► Conveyors

Tri-Mach Group is a leader in manufacturing custom sanitary conveying systems for the food, liquid processing, and pharmaceutical industries.

Each conveyor is custom-designed and built to your specifications from concept to finished product. Our food-grade conveyors meet or exceed the highest standards in health and safety requirements for all areas of food processing. The expert team at Tri-Mach Group can also modify your existing conveyors to improve established sanitation processes.



## General Design Specifications

Constructed using all grades of stainless steel (304, 304L, 316)

All welds are continuous and smooth, free from burrs and pits

Belting suited to application

Stainless steel gearboxes and motors

Stainless steel or fiberglass enclosures

AC or DC drive controls

Fixed or variable speed

All systems are fully wired and tested



## Conveyor Types

Accumulation	Gravity Roller	Power/Gravity Roller
Activated Roller Belt (ARB)	Guillotine	Proofer
Bottling	Incline / Decline	Radius / Curve
Box Conveyor	Indexing	Recirculating
Bucket Elevators	Laning / Singulation	Reject
Bulk Handling	Metal Detecting	S-Conveyors
Case Packing	Metering	Spiral Cooling
Cooling	Multi-Tiered	Spreader
Deboning	Oven Loading / Unloading	Straight
Defeathering	Overhead Rail	Topper
Dewatering	Pace	Tight Transfer
Elevator	Packaging	Trim

## Belt Types



Intralox® Activated  
Roller Belt™



Seam-Free Flat Top



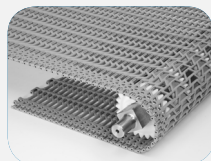
Flush Grid  
Friction Top



Flat Friction  
Top



Square Friction Top



Flush Grid



Urethane Flat Top



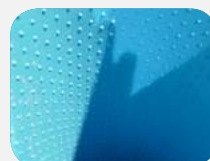
Synchronized  
Sidewalls



Fabric Belting



Flights and Scoops



Nub Top

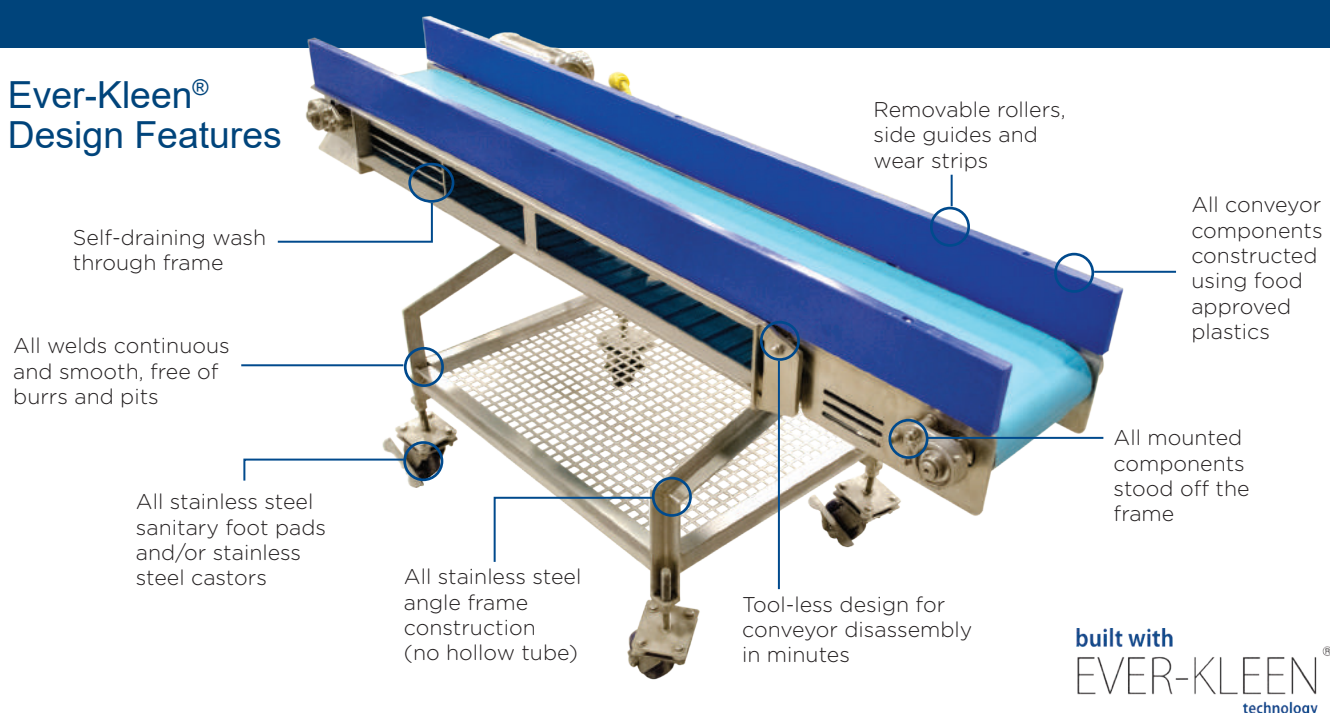


Wire Mesh

# ► The Ever-Kleen® Conveyor System

The Ever-Kleen® brand represents the very best in sanitary equipment design. Built to be food-safe, ergonomically sound, and simple to disassemble and clean, Ever-Kleen® conveyors are a state-of-the art solution for moving products along your processing or packaging line.

## Ever-Kleen® Design Features



## Ever-Kleen® Benefits

Sanitary design, built to eliminate bacteria harborage areas

Complies with NAMI, 3A, HACCP, NSF-GFTC, GFSI, and other food safety standards

Suitable for all belting types

Customized to meet your specific requirements, ensuring seamless line integration

Tool-less disassembly design saves hours of downtime each day

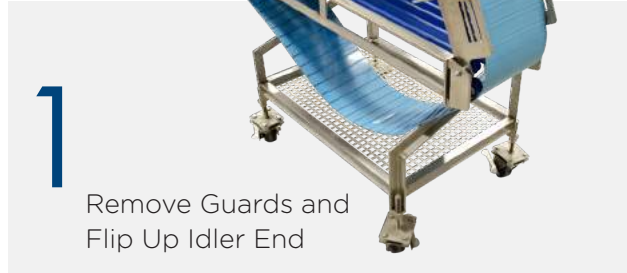
Easy integration with optional CIP and belt-lift systems

## As Easy As 1-2-3!

Our Ever-Kleen® Conveyor Systems disassemble within minutes, without the use of tools, providing increased productivity, reduced downtime, and the highest level of food safety.



Fully Assembled



1  
Remove Guards and  
Flip Up Idler End



2  
Remove Belting



3  
Remove Food-  
Grade Plastic  
Components

### Optional Lift Bar

- Ideal for conveyor lengths 20' or longer
- Eliminates the need to remove belt for sanitation
- Allows easy access to all conveyor components
- Reduces downtime and increases productivity



### Optional CIP Spray Bar

- Allows cleaning of the belt without disassembling conveyor
- Quick connect cleaning port eliminates the need for tools
- Prevents bacterial growth on belt surface
- Increases productivity by reducing sanitation downtime



# ► The Ever-Kleen® SL Series

Tri-Mach Group is proud to offer a three-level benchmark system for our industry-leading Ever-Kleen® conveyors. The Ever-Kleen® SL1, SL2, and SL3 series conveyors were developed to meet every aspect of our customers' needs.

By re-organizing our Ever-Kleen® conveyor offerings, Tri-Mach Group is providing more choice, higher efficiency, and improved economical flexibility for our valued customers. The new Ever-Kleen® levelling system streamlines the design and fabrication process, while maintaining the same level of customization and quality that our customers expect from a Tri-Mach Group solution.



built with  
**EVER-KLEEN®**  
technology



Ever-Kleen® SL1 Series



Ever-Kleen® SL2 Series



Ever-Kleen® SL3 Series

## Ever-Kleen® SL Series Advantages

- Cost-effective options tailored to meet your sanitary requirements
- Seamless integration with new or existing equipment
- Full end-to-end service from design through to installation by our skilled team
- Same level of customization that our valued customers expect

## Ever-Kleen® SL Series Matrix

Ever-Kleen® SL1 ▲

Ever-Kleen® SL2 ■

Ever-Kleen® SL3 ●

	Raw	Further Processing	Packaging
Ready to Eat	●	● ■	■
Pet Food	●	● ■	■
Meat/Poultry	● ■	● ■	■
Dairy	● ■	● ■	■
Fruit/Vegetable	● ■	● ■	■
Pharmaceutical	● ■	● ■	● ■
Bakery	■	■	▲
Snack Foods/Confectionery	■	■	▲
Frozen Foods	■	■	▲



# ► Custom Solutions for Conveyors

All conveyors are custom-designed and built to your specifications from concept to finished product. We can also modify your current conveyors to improve their sanitary design and cleaning process. Contact us today to find a custom solution that best suits your operation.

Here are a few examples of our custom conveying solutions:



90° Package Turning System



90° Passive Transfer System



Accumulation System



ARB® Packing Transfer System



Bagging & Packaging System



Box Case Transfer System



Full Processing Line



Gravity Roller



Hopper Conveyor



Incline Conveyors



Laning Conveyor



Metal Detector Conveyor



Multi-Lane Conveyor



Pack-Off System



Pail Filling System



Product Inverter & Singulator



Radius Conveyor



Retract Conveyor



Rope Belt Conveyor



Trim Line



Turntable



Wash Tank



Wire Mesh Conveyor



And Many More

# ► Platforms

Our Ever-Kleen® sanitary platforms are manufactured with the highest quality craftsmanship to meet and exceed safety standards and local building codes. Designed to address and solve health and safety concerns, our Ever-Kleen® platforms are custom-built to suit any application.

Already have an existing platform? We can modify it to improve your sanitary and food safety requirements.



built with  
**EVER-KLEEN®**  
technology

## General Design Specifications

All stainless steel construction	1/4" formed checker plate decking	Continuous sanitary welds	Frame constructed at 45 degree angle	Assembly and installation provided
Deck is raised from the frame	Platform is pitched to a central drainage system eliminating standing water	Scale component wash stations with a separate drainage system	Complies with latest food safety directives for cleaning	Custom-built to any specifications

## Platform Types



Mezzanines



Multi-Head Weigh Scales



Walkways



Access Platforms



Service/Maintenance



Operator Platforms



Mobile Maintenance Platforms



Platform with Mobile Stairs



Operator Stands

## Options



I-Beam Design Available



Scale Head Wash Station



Under Stairs Drip Pan



# ► Ergonomic Stands

Ever-Kleen® Ergonomic Stands are the perfect addition to any facility where food safety and employee well-being are top priorities.

The stands are sanitary in design, featuring stainless steel construction, slip-resistant decking with cushion and flex for employee comfort. Durable and custom-built for any application, our Ever-Kleen® Ergonomic Stands allow employees to work at their proper ergonomic height, increasing productivity and well-being.



## General Design Specifications

Stands are stackable to allow employees to work at proper ergonomic height	2" standard stacking height	Slip resistant decking	Sanitary design is easy to clean	All stainless steel construction
Open hole grip surface	Custom dimensions	All welds are continuous and ground smooth	Support bracket on legs for durability	Option: Stands can be labeled to avoid cross contamination



## Stand Types



Dual-Step Stands



Pneumatic Lift  
Stands



Single-Step Stands



Adjustable Stands,  
Long Handles



Dual-Operator  
Adjustable Stands



Adjustable Stands,  
Short Handles



Single Stackable  
Stand



Stacked Stands



Dual-Operator  
Stackable Stands

## Carts

- Cart allows for storage and easy transportation of stands
- Stainless steel construction
- Swivel, lockable stainless steel casters
- Single Cart holds 10 stands
- Double Cart holds 20 stands



Single Cart



Double Cart

# ► Stainless Steel Fabrication

From single components to complete line layouts, Tri-Mach Group has the proven expertise to deliver a project of exceptional quality.

Our highly skilled team will work closely with you to engineer and manufacture custom equipment to perfectly fit your needs. Our CWB certified employees use the latest in manufacturing technology and techniques to produce the highest level of quality products.

Tri-Mach Group operates in a non-ferrous facility, using only stainless steel and aluminum materials. By eliminating exposure to ferrous particles, our equipment is less likely to rust and contaminate food.

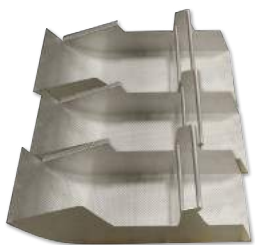
built with  
**EVER-KLEEN**<sup>®</sup>  
technology



## Our Capabilities Include:

Chutes	Rack Tipplers	Smoke Sticks
Dumpers	Racking Systems	Tables
Equipment Guarding	Conveyors	Tanks
Guillotines	Ergonomic Stands/Safety Stands	Tray Denesters
Hoppers	Ladders, Stairways, and Handrails	Wash Carts
Overhead Gantries	Pipe Hangers	Platforms and Catwalks
Pack-Off Tables	Product Handling Solutions	Rail Systems
Parts Carts	Prototypes	And Much More

## Product Types



Chutes



Equipment Guarding



Hoppers



Overhead Gantries



Pack-Off Tables



Parts Carts



Smoke Racks



Smoke Sticks



Tables



Tanks



Wash Carts

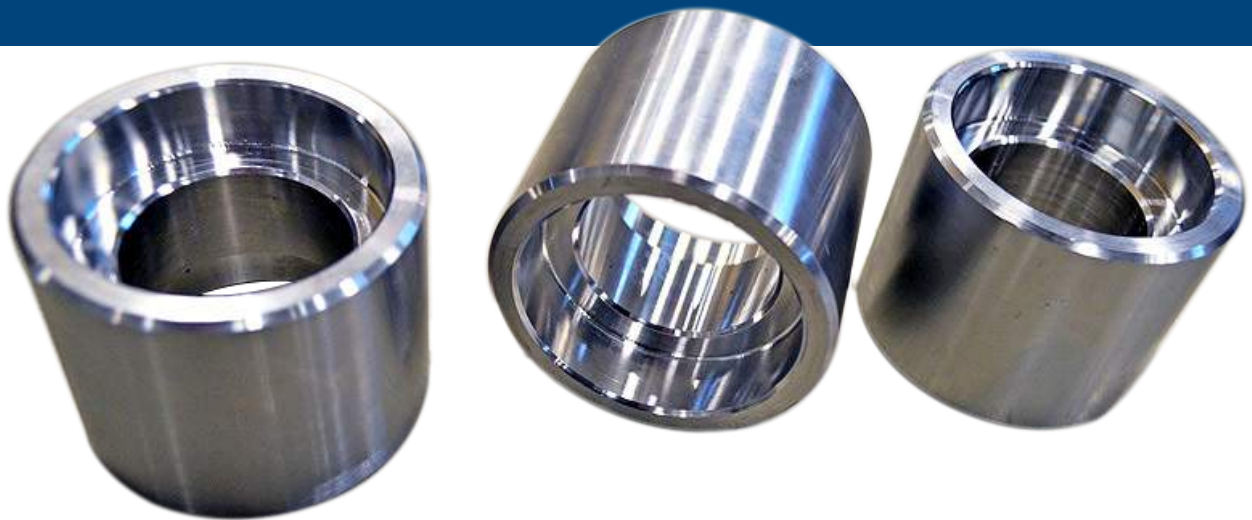


And Many More

# ► Machining

In our fully-equipped machine shop, we complete customer-specific projects that demand an eye for minute detail and exact precision.

Our certified machinists have vast experience with a range of food grade and non-ferrous materials, using the latest technologies in manual lathes and milling machines. Their knowledge and expertise allow us to create custom components for any equipment in the food, liquid processing or pharmaceutical industries.



## Our Quality Assurance Guarantee

Product quality is  
our top priority

We employ  
highly-skilled  
and experienced  
machinists

We carry out  
detailed inspections  
and testing

We implement  
strict quality  
control procedures

We provide fast  
and reliable  
service to meet  
your needs

We are experts  
in food-grade  
materials

## Product Types



Bearing Blocks



Cookie Dies



Gravity Rollers



Custom Rollers



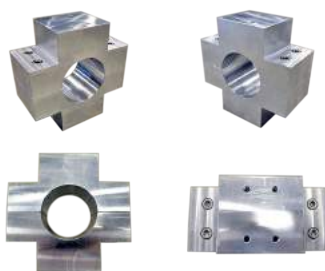
Lock Bushings



Mandrels



OEM Parts



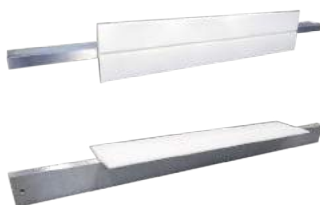
Replacement Parts



Prototypes



Rebuilds



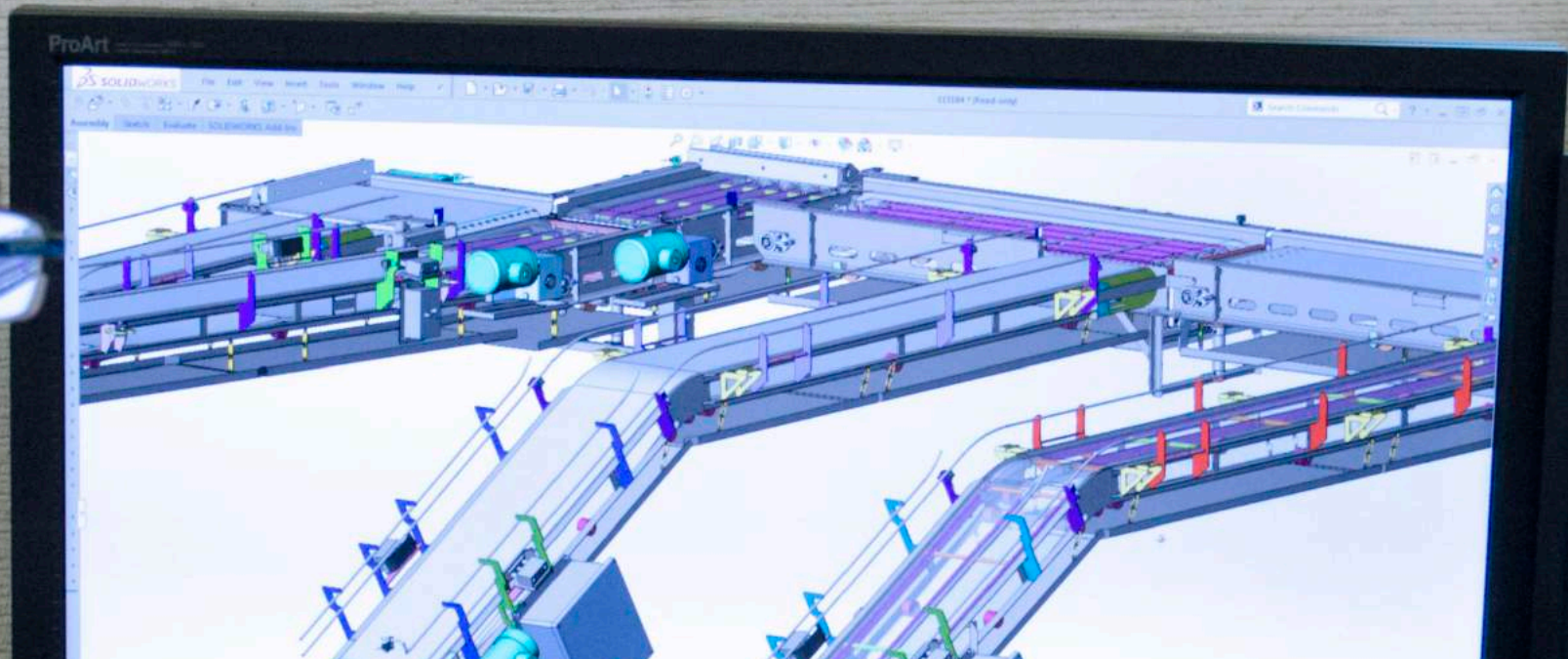
Shafts



Tooling



# Design Engineering



Tri-Mach Group's in-house design engineering team uses the latest Solidworks, Autodesk® Inventor®, and CAD technology to accurately conceptualize and design the optimal solution for your operation's needs.

Our design engineering specialists have years of design and field experience in the food, liquid processing, and pharmaceutical industries. Each design is produced to meet or exceed CFIA, USDA, NAMI, 3A, and BRC sanitary design guidelines.

 Equipment Design

 Digital Modelling

 Layouts

 On-Site Analysis

## Our Capabilities Include:

Solidworks, Solidworks Simulation,  
Autodesk & AutoCAD technology

3D Animations

Conceptual Layouts

Onsite Analysis/Investigation/  
Measurements

Equipment Design &  
As-Built Drawings

Process Flow &  
Line Layouts

Preliminary consultations are set up to define your project's specific needs. Tri-Mach Group will then use our 30+ years of experience to design a solution that works for you – without the hidden costs that can slow down negotiations. Not only does this facilitate a smooth transition from project conceptualization to finished product, but it also helps build trust between us and the valued customers we help.

## Research & Development

With an array of prototyping services at your fingertips, your next solution can be something the market has never seen before. Tri-Mach Group is ready to provide you with best-in-class services to help make it happen.

Digital modelling

In-house machining  
capabilities

Prototyping

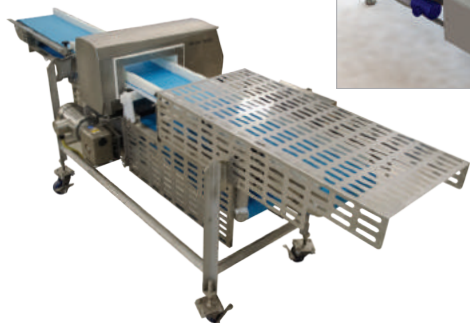
3D printing for  
single parts

In-house fabrication  
and assembly

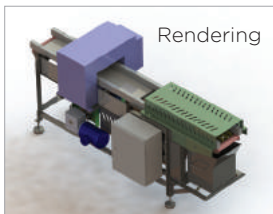
Factory acceptance testing  
and revisions performed at  
Tri-Mach Group facility

## Metal Detector

Final Result



Rendering

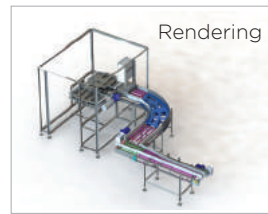


## Product Inverter

Final Result



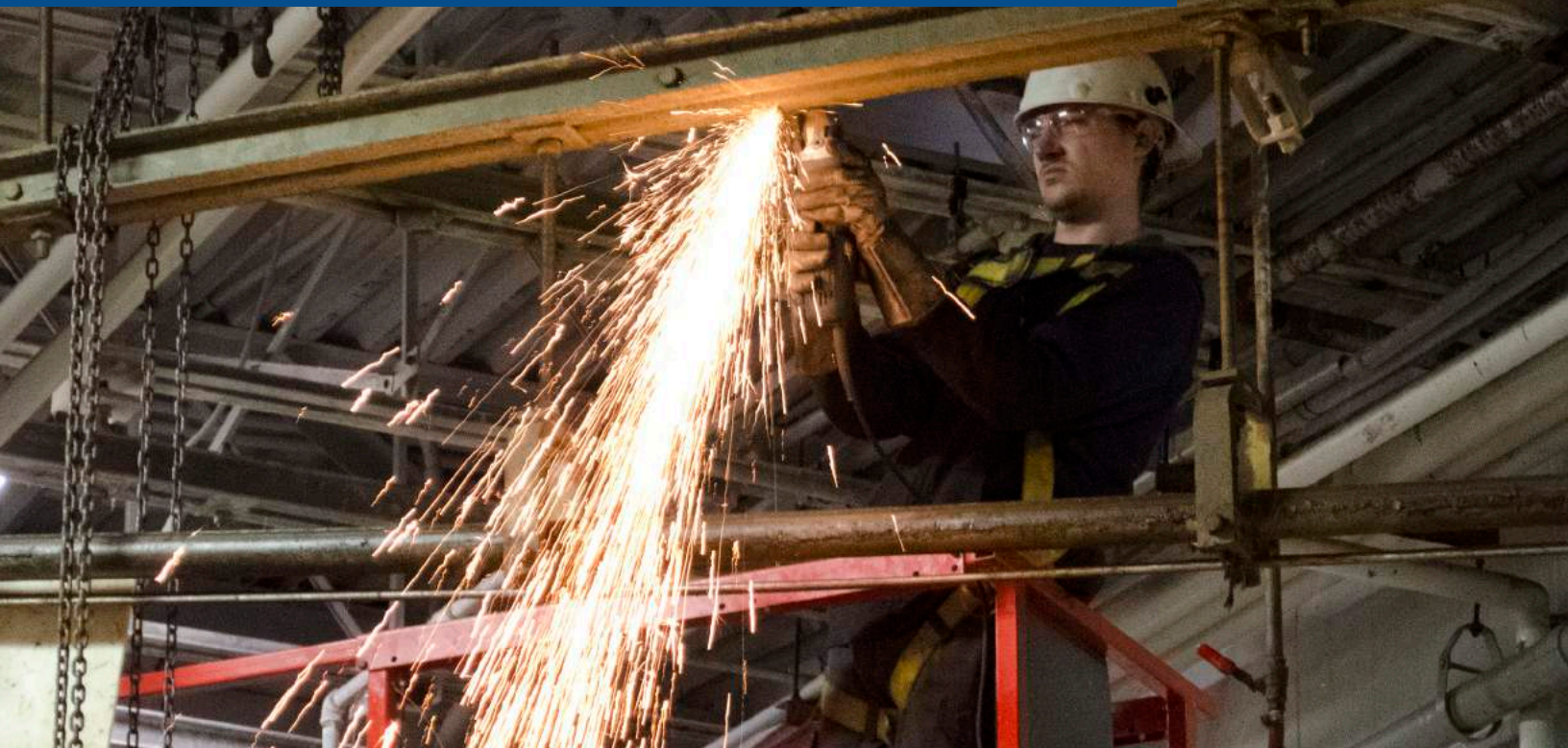
Rendering





# Millwrighting

Construction and Industrial



Backing up our sanitary equipment offerings, Tri-Mach Group also provides a full suite of millwrighting services to provide a true one-stop solution experience.

Our TSSA, CWB, and HACCP certified millwrights have earned a reputation for being the best in the industry.

Providing best-in-class millwrighting services, Tri-Mach Group prides itself on their attention to detail on every project, while always respecting our customers' schedules. With millwrights available 24 hours a day, 7 days a week, we can complete your project on time or ahead of schedule so you can get back to business as soon as possible.



Installations



Relocations



Repairs



Decommissioning



## Our Services Include:

Turn-key line installations	Facility and line relocations	New equipment integration & process improvements
OEM equipment installations	Processing & packaging line modifications	Sanitary process piping
Machinery and equipment relocations	Equipment rigging	Plant decommissioning
Pre-start health and safety review (PSR) equipment improvements	Machine repairs, rebuilds, retooling & upgrades	Preventive maintenance programs & qualified maintenance coverage



Tri-Mach Group millwrights perform plant maintenance on a customer facility.



A Tri-Mach Group millwrighting crew performs a new equipment installation.



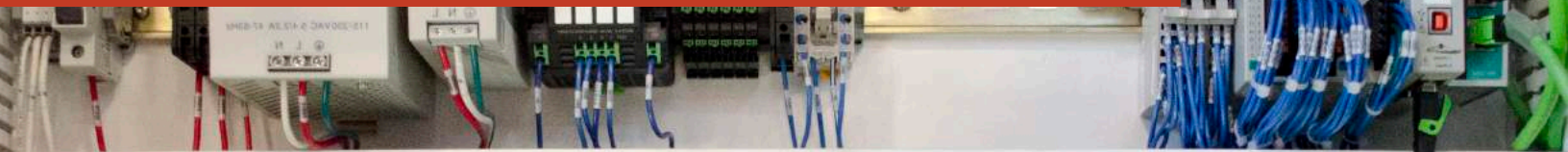
A Tri-Mach Group millwright relocates customer equipment from an existing facility to a new plant.



A Tri-Mach Group foreman oversees the unloading of an agitator in need of repair.



# Electrical



For electrical installations, power upgrades, CSA inspections, panel design, and more, Tri-Mach Group has the capabilities to handle all of your electrical needs.

Tri-Mach Group is your one-stop solution provider for all your electrical requirements, no matter the project size.



Automation  
& Integration



HMI Design



Repairs & Upgrades



Control Wiring





## Our Services include:

Design & build control panels	Automation and integration	PLC programming
Troubleshooting	Power distribution systems	Lighting installation
Upgrades and repairs	Control wiring	ESA inspections
Maintenance coverage	Interlocks and safeties	HMI graphic design

## Control Panels

Stainless steel	Fiberglass
Stainless steel sloped top	And much more

## Options

HMI Screens	PLCs	Relays	Remote I/O
Servo Motors	Solenoids	NEMA 4x VFDs	And much more



Bacon line automation and integration.



Tri-Mach Group can design a custom HMI for your unique workflow.

Electrical work performed by licensed electricians and electrical contractors, including Industrial Contracting Solutions Inc., ECRA/ESA Licensed Electrical Contractor #7006244

# Automation & Integration

Streamline your operations with turnkey automation solutions from Tri-Mach Group, seamlessly integrated with your existing equipment.

Leveraging our industry knowledge and expertise, our engineering and project management teams define and select the control components required to deliver a custom-engineered system. No matter how complex the need, Tri-Mach Group implements solutions that are easy to use, maintain, and modify, meeting or exceeding customer expectations.

## Packaging Automation

Our automation services are perfect for improving end-of-line processes. Designed to streamline the packaging process while providing a lucrative ROI, packaging automation services from Tri-Mach Group are custom-built to integrate seamlessly with your existing equipment.



Installation & Integration



Wiring



Programming



Data Acquisition

## Automation Solutions

Bagging	Case Packing	Imaging / Inspection
Lane Selection	Palletizing	Product Orientation
Singulation	Equipment Integration	And Much More

## Our Services Include:

High speed automation	Integration of SCADA systems	Equipment automation
Complete line synchronization and integration	Panel engineering and design	Drives and control systems
PLC programming including HMI & other operator interfaces	Wiring and troubleshooting	Electrical schematics
Installation and integration	Re-tool lines for consolidation of SKUs	Data acquisition
Servo systems and integration expertise	Systems communication	And much more

## Our Capabilities Include:

Allen Bradley	Eaton	Panasonic	Schneider Electric	Siemens	And Many More
---------------	-------	-----------	--------------------	---------	---------------

Electrical work performed by licensed electricians and electrical contractors, including Industrial Contracting Solutions Inc., ECRA/ESA Licensed Electrical Contractor #7006244



# Plant Maintenance & Spare Parts



Regular maintenance can save time and money by reducing major repairs and unscheduled downtime, while also helping to prevent food contamination of food products. Tri-Mach Group has the experience and expertise to ensure your operation continues to run efficiently 365 days a year.

Our maintenance professionals offer 24/7 support and have been trained on all types of manufacturing equipment. In addition, each Tri-Mach Group employee has received in-depth HACCP and GFTC training and follow GMP food safety guidelines.



24/7 Support



HACCP-Trained



Vacation Relief



Spare Parts Program



## Our Services Include:

### Maintenance Coverage

Vacation Relief

Staff Shortfall

Production Line  
and Change Over

### Preventive Coverage

Equipment and  
Machinery Assessments  
and Programs

Equipment and  
Personnel Maintenance  
Planning

Scheduled Machinery  
Maintenance

## Belt Repair & Spare Parts Program

When a critical component needs to be repaired or replaced, trust Tri-Mach Group to quickly get your equipment back up and running. Our fully-equipped machine shop can create new or replacement components for your equipment, and our extensive list of industry contacts allows us to take care of any issue you might be experiencing. We offer a critical spare parts package on all completed conveyor projects. This package provides you with the recommended parts to ensure your operation is running smoothly.

Tri-Mach Group is the preferred on-site service provider for **Intralox®** belting in *Ontario, Canada*.

## Supply & Onsite Repairs

Our expertise doesn't stop with just supplying our own conveyors. Tri-Mach Group can inspect, repair, or retrofit any conveyor in your facility. If you're experiencing efficiency issues, mechanical failures, electrical problems, or anything else that impedes production, trust the experts at Tri-Mach Group to bring your equipment back up to standard.

Our experienced Project Managers will visit your facility to inspect the equipment and generate an estimate for repair. For improved efficiency, Tri-Mach Group millwrights can perform upgrades on-site or at our facility. Once complete, we will re-install the equipment and perform a thorough Factory Acceptance Test to ensure the solution is up to your standard.



# Laser Cutting



To further our commitment to food safety and ensuring zero contamination in our manufacturing processes, Tri-Mach Group is pleased to announce the purchase of a brand new 6KW Trumpf TruLaser 3030.

Tri-Mach Group's new Fiber Laser aligns well with the food, liquid processing, and pharmaceutical industry sanitation needs. The laser is exclusively operated within our non-ferrous facility, mitigating any risk of contamination.

Using patented TruDisk fiber laser technology, Tri-Mach Group is able to cut stainless materials and parts to meet any specific design or function, opening our doors to many different industries. Whether it is guarding for large scale projects or any other custom requirements, Tri-Mach Group will take your project to the next level.



Custom Parts



High Accuracy



Tight Tolerances



Non-Ferrous Metals

## Our Capabilities Include:

With an array of laser cutting services at your fingertips, your next solution can be something the market has never seen before. Tri-Mach Group is ready to provide you with best-in-class services to help make it happen.

Ability to process stainless steel material up to 1.125" thick

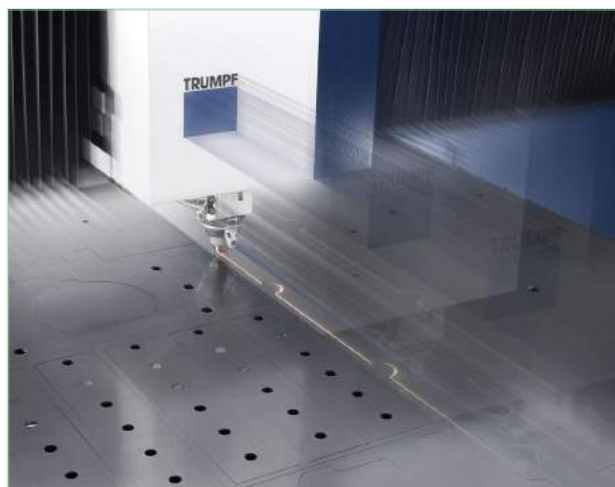
Capable of handling sheets or plates up to 60" x 120" in size

Dedicated to non-ferrous parts & materials

Inventory of 304 and 316 sheets from 22-7ga & plates 1/4" to 3/4"

BrightLine Fiber technology guarantees the highest edge quality

CoolLine technology to ensure precise cutting



Introducing Tri-Mach Group's new 6KW Trumpf TruLaser 3030 Machine - powered by TruDisk Fiber.



Fiber Laser Machine cutting through sheets of metal using AdjustLine functions.

## Our Services Include:

With maximum cutting flexibility, the TruLaser 3030 Fiber addition to the Tri-Mach facility is the perfect machine for all of your custom stainless materials or parts. With a focus on the processing of non-ferrous metals, Tri-Mach Group guarantees the highest quality products.

Guarding

Shelving

Brackets

Conveyor Supports & Frames

Floor Drains

Chutes

Carts

SS Racking

Tables

# 3D Scanning



Tri-Mach Group now has an Imaging Laser Scanner, capable of capturing full-colour, 3D panoramic images of an entire facility. This technology ensures the highest accuracy on all equipment Tri-Mach Group builds and installs, providing a “real view” of customer projects along the way.

With this Laser Scanner, Tri-Mach Group can scan a fast, high resolution 3D map of an entire facility in less than 3 minutes. The scanner generates a full-dome scan and 150 MP spherical image, using 360,000 laser scan points per second in HDR and thermal imaging. The image is then streamed into the ReCap Pro mobile app and transferred to CAD, BIM, VR, and AR applications.



HDR Imaging



3D Mapping



Precise Measurements



Point Cloud Processing

## Our Capabilities Include:

This new Laser Scanner, allows project managers and estimators to accurately map out rooms by taking exact measurements in a fraction of the time that traditional methods. Trust Tri-Mach Group to capture you facility in high resolution.

High resolution 3D panoramic images

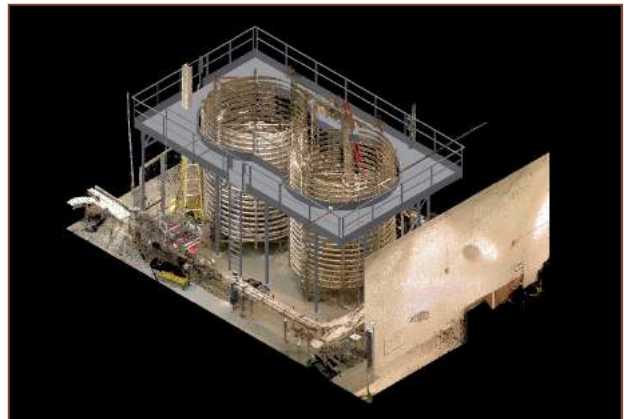
Increased accuracy in measurements


Improved detailed design processes

Quick and efficient scan times

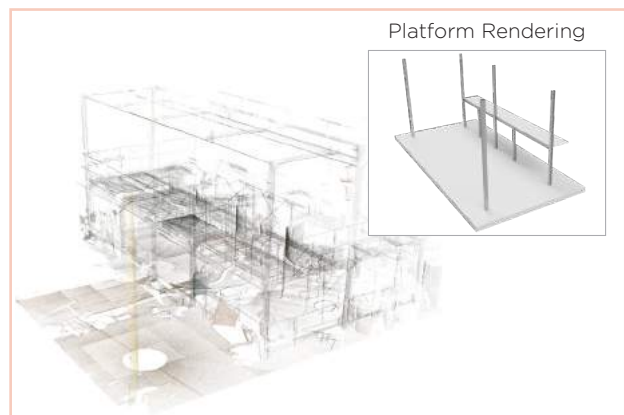
Accurate layouts & installations of new equipment


Ability to locate interferences with existing equipment




 Tri-Mach Group has the ability to map out a facility using 3D and thermal imaging in less than 3 minutes.

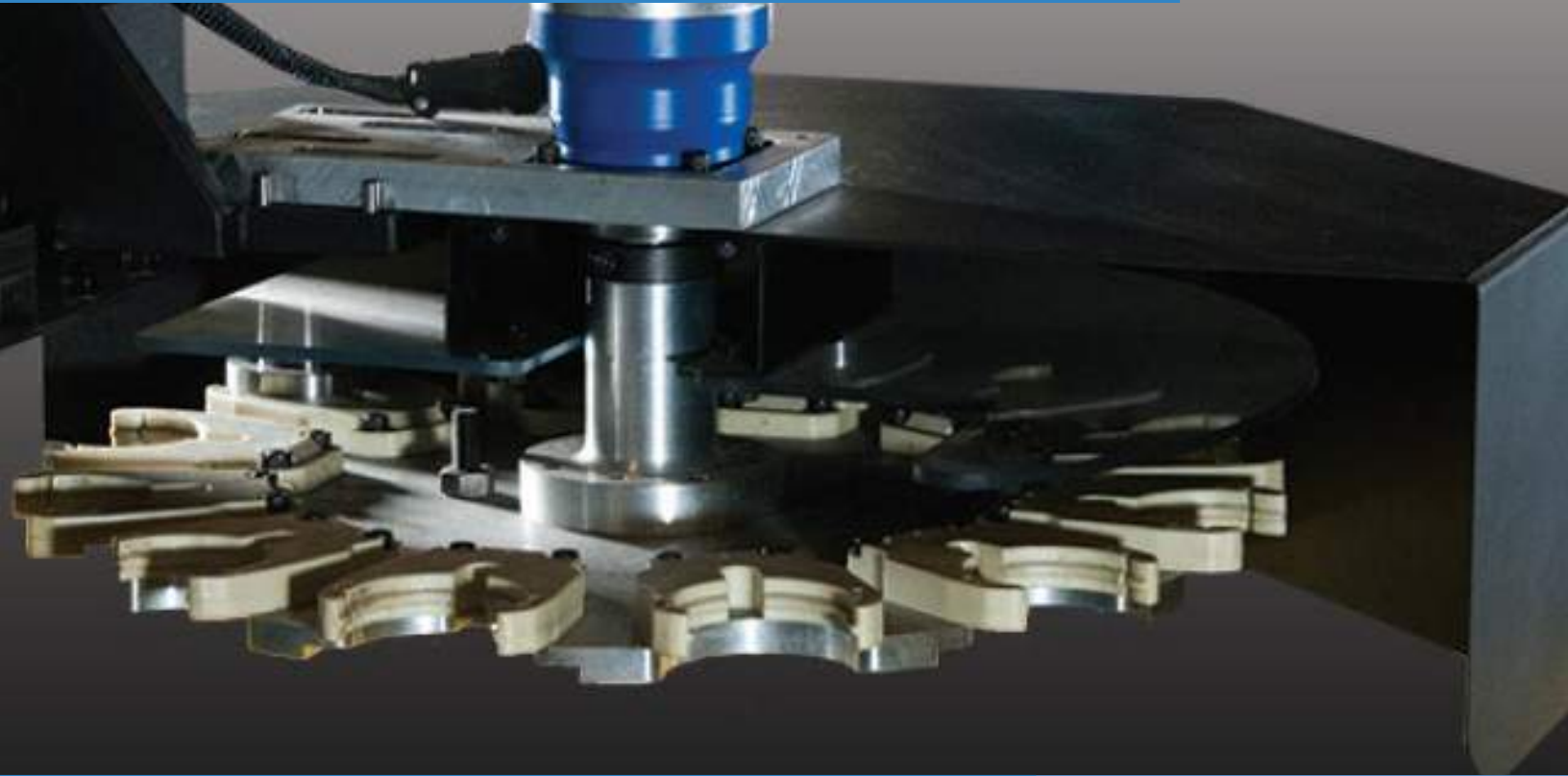
 Ability to capture exact 3D mapping to show Tri-Mach Group's platform.



 Scans entire facilities to map out where Tri-Mach Group's conveyors will be incorporated.

 Captures precise dimensions, allowing Tri-Mach Group to fit custom manufactured solutions.

# CNC Router



Tri-Mach Group's CNC Router is designed for high-speed routing in a broad range of plastic and non-ferrous metal operations. This precise machine ensures each customer receives the highest quality end product, no matter what their requirements may be.

Our skilled team can configure the CNC Router to meet the needs of various applications, providing 1/1000th of an inch accuracy on all projects. The CNC Router operates at a 1,800 IPM cut speed, with +/- 0.001" repeatability. From small components to large table tops, Tri-Mach Group's CNC Router can meet the needs of your next custom project.



Large-Scale Projects



2D & 3D Routing



Precise Cutting



Quick Parts Production



## Our Capabilities Include:

Tri-Mach Group's CNC Router includes a variety of capabilities, which can be used to create a custom solution for your project. Talk to our expert workers to find out how this state-of-the-art machine can help you and your company.

Inventory of UHMW & HDPE 0.5" to 2.5" thick

Capable of handling sheets or plates up to 60" x 120" in size

Cuts plastics, non-ferrous metals, and composite materials


12 position rotary automatic tool changer

Both 2D and 3D cutting capabilities

Consistently cuts with 1/1000th of an inch accuracy



 Tri-Mach Group's router work surface is big enough to support large-scale projects.

 CNC Router cuts conveyor side guards out of a large polycarbonate sheet.

## Our Services Include:

With the wide array of tool heads Tri-Mach Group has for this advanced CNC Router, the capabilities are almost endless. The following are some of the applications which the router has been used to create in our facility.

Change Parts

Conveyor Side Guides

Rollers

Table Tops & Cutting Boards

Wear Strips

Polycarbonate Panels

Spacers

Machine Guarding

Foot Pads



"Your One Stop Solution Provider"

## Tri-Mach Group

23 Donway Court  
Elmira, Ontario  
N3B 0B1



Phone: 519 744 6565

Fax: 519 744 6829

Toll Free: 1 877 TRI MACH (874 6224)

info@tri-mach.com

tri-mach.com

## 24/7 Emergency Service Hotline

1 877 TRI MACH (874 6224)

Connect With Us

