

NEXTECH

Miniature 1080p WiFi IP Camera

User Manual

Thank you for purchasing this product, the machine uses a unique ultra-portable design, it can be applied in various fields, it is very convenient, safe and bring a colorful life for you, please set your camera correctly in accordance with the guidelines of the quick steps .

I. Start


Switch the power to ON to boot up the camera. It will take about 30-60 seconds to finish booting up.


With the power switch ON, hold down the reset button for 5 seconds to restore the factory settings.

1. The blue light is the power indicator. Solid blue means the device is on.
2. The red light is the WiFi indicator.
 - a. Point-to-point mode (direct connection between phone and camera): red light flashes slowly.
 - b. Remote access mode (camera connected to a WiFi router): solid red light.

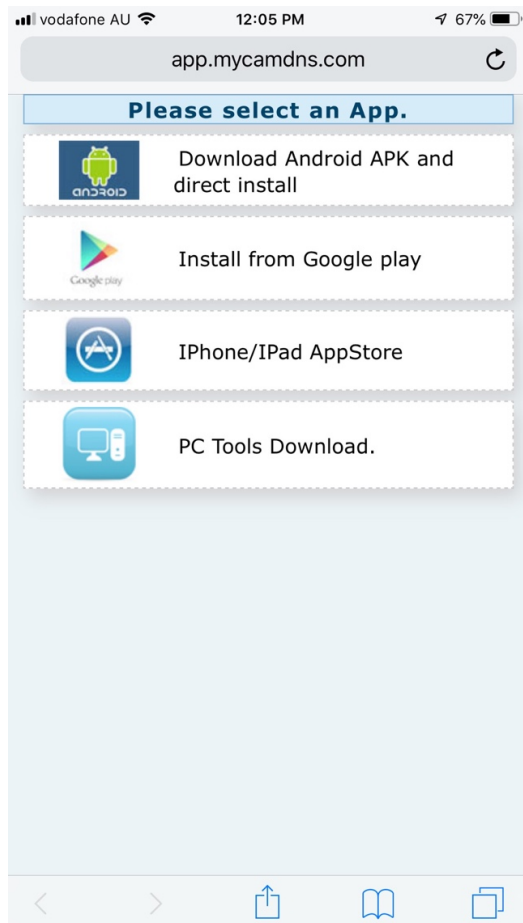
c. Failure to connect when in remote access mode: red light flashes quickly.

Note: resetting the camera would make it into point-to-point mode.

3. Infrared night mode control: On the app, tap  to enable or disable night mode.

4. Indicator lights control: On the app, tap  to enable or disable the indicator lights.

II. APP software download



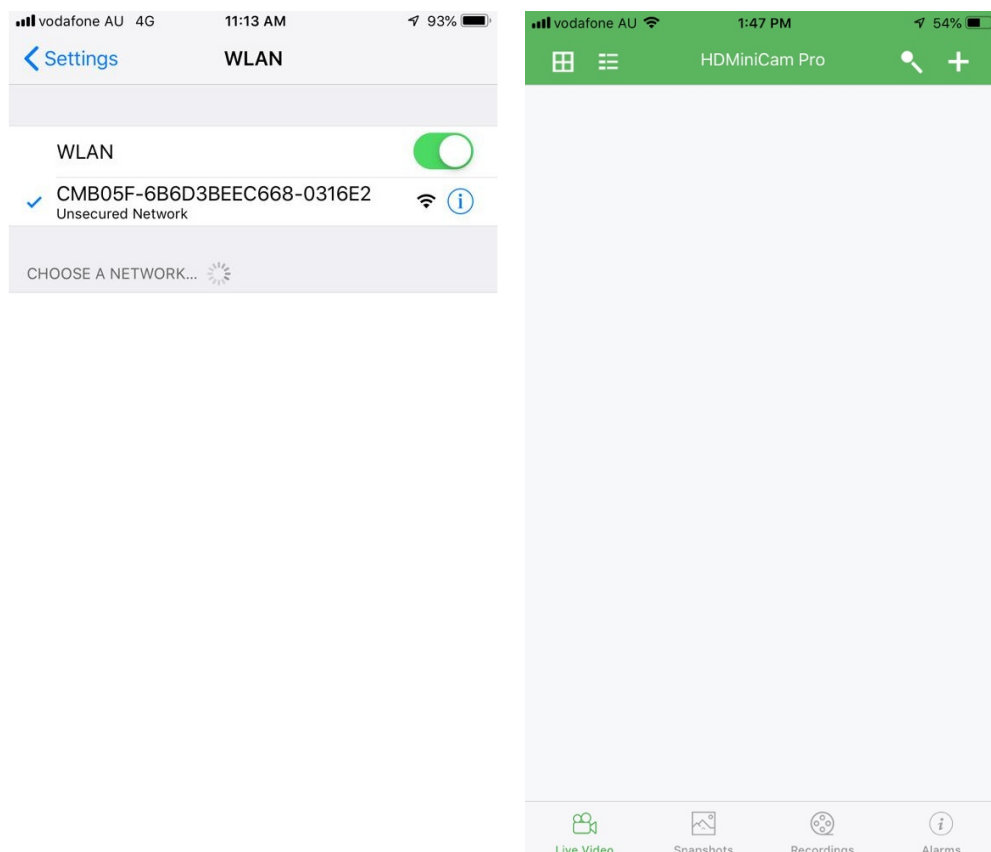
For Android phones, search for APP software named “HDMiniCam Pro” in Google Play.

For Iphone, APP software named “HMiniCam Pro” in App Store.

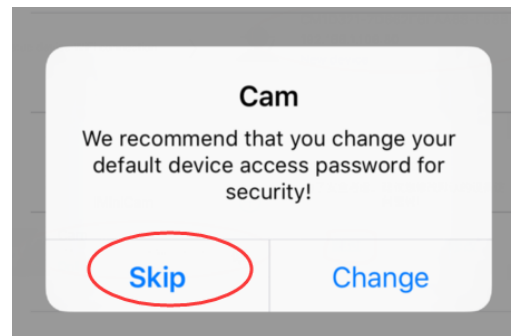
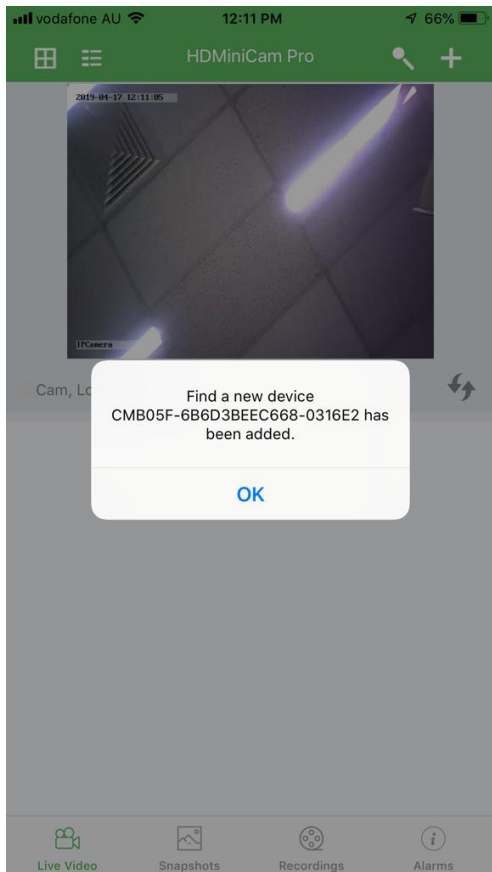


III. Point-to-point mode

Enter the phone settings where WIFI signal inside, find the signal (If the UID number WiFi signal is not available, please try to reset the camera) and connected as the picture shows



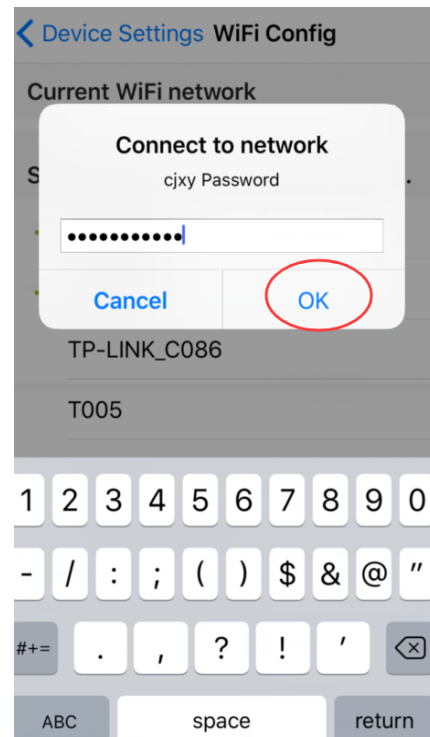
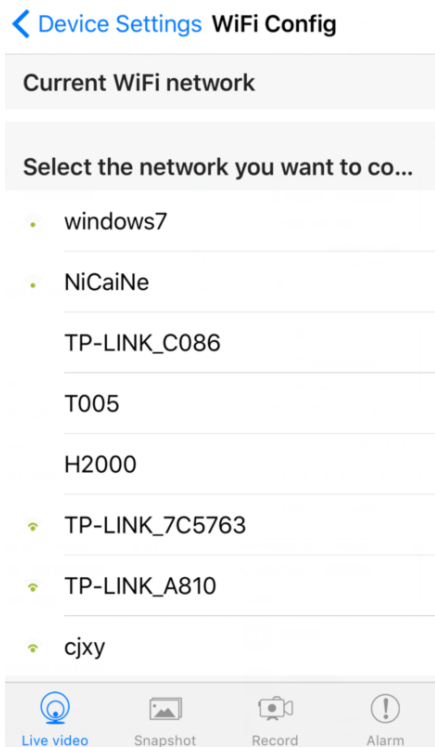
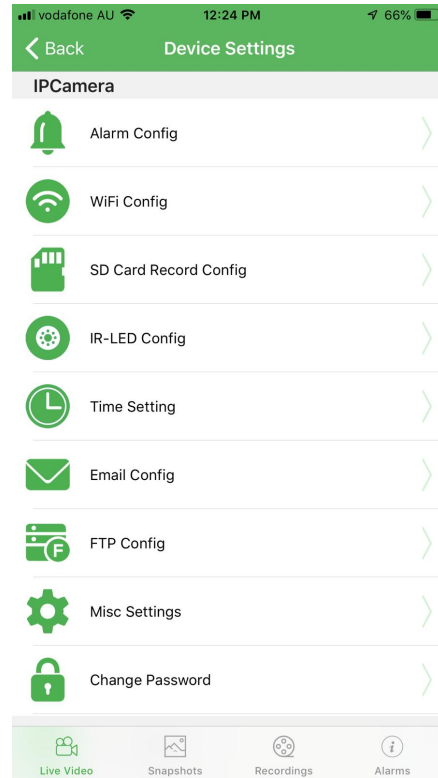
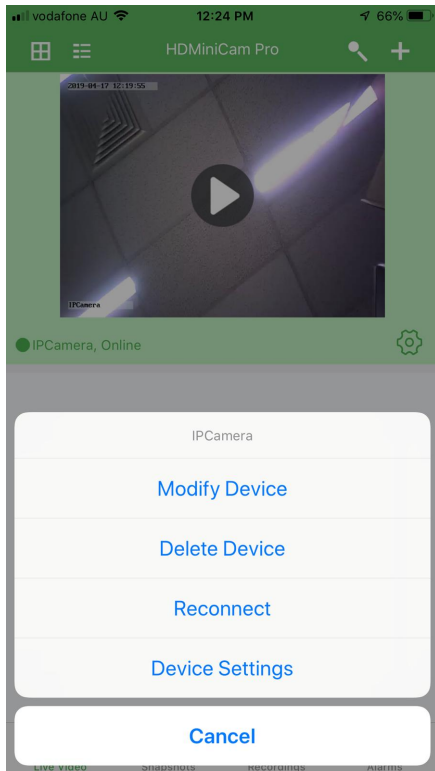
Then open the phone APP **HMiniCam Pro** appears as shown in the figure, and the camera will be added automatically.

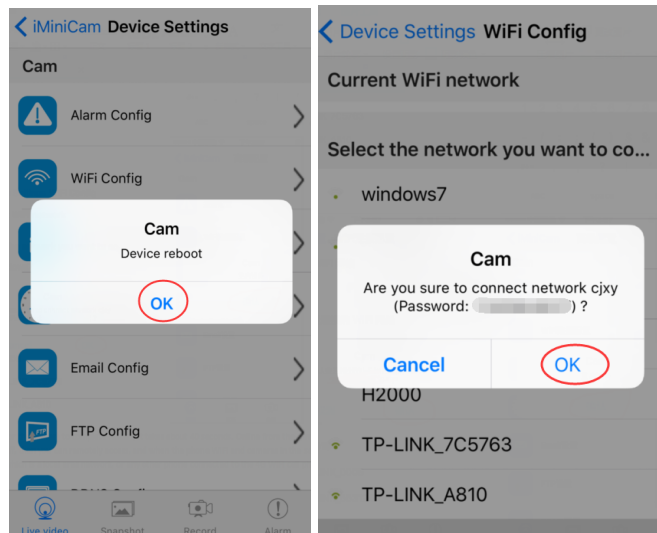


Click to go online camera appears as shown, click Skip to watch videos.

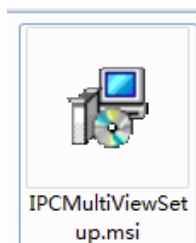
IV. Connect camera to WiFi router

In point-to-point mode, tap the gear icon to enter Device Settings, then go to WiFi config. Select the WiFi and input the WiFi password. Confirm reset then after booting up, camera will be online for remote access.





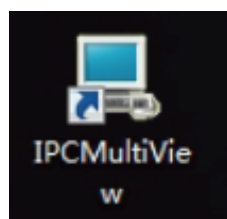
1) Download the computer client software and install



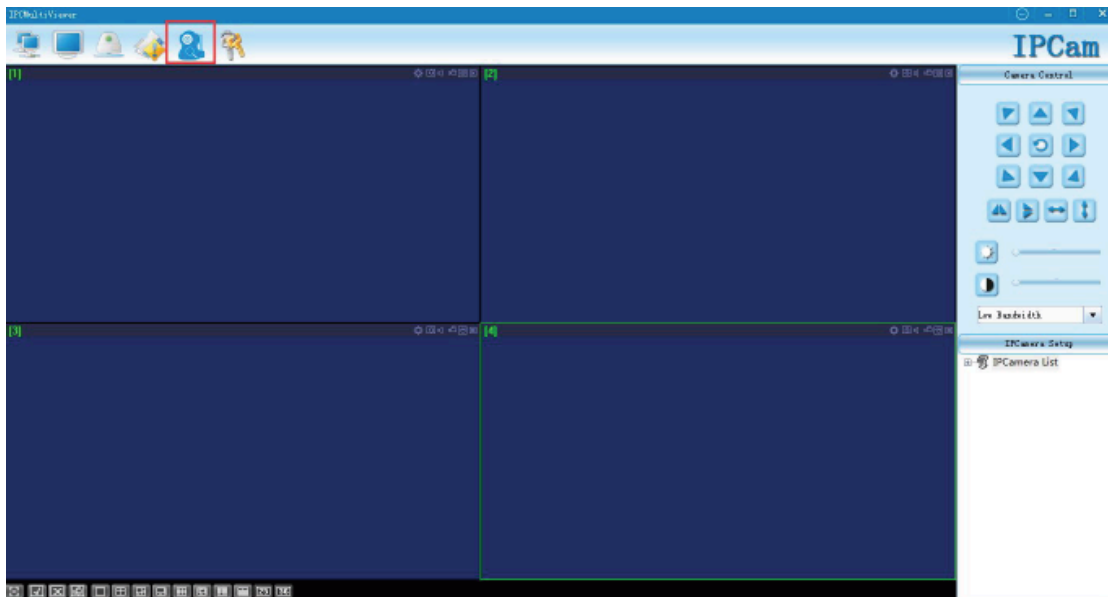
2) Click on the successful installation will appear as shown in Figure Desktop login box appears. (See below)

Software Instructions:


Main Interface of the client.




Open the client program directly to enter into main interface as shown below: (User Name:admin Password:).



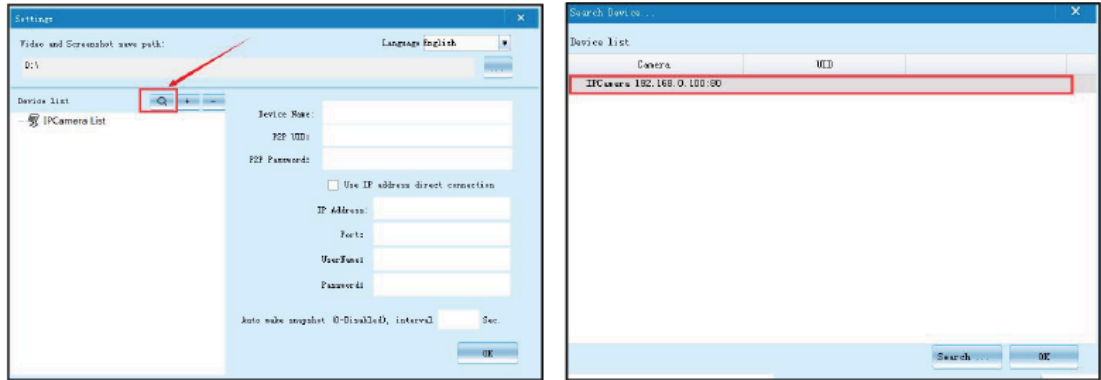
1. Add Device

1.1 Click  to pop up the following dialog. Open

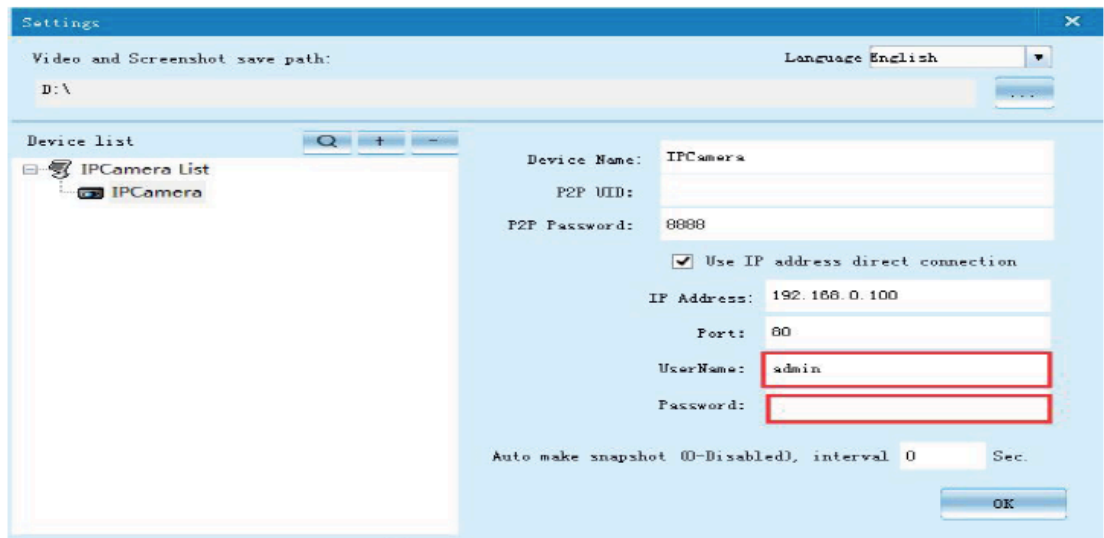
 (searching interface) and then click

. Double click the searched IP address

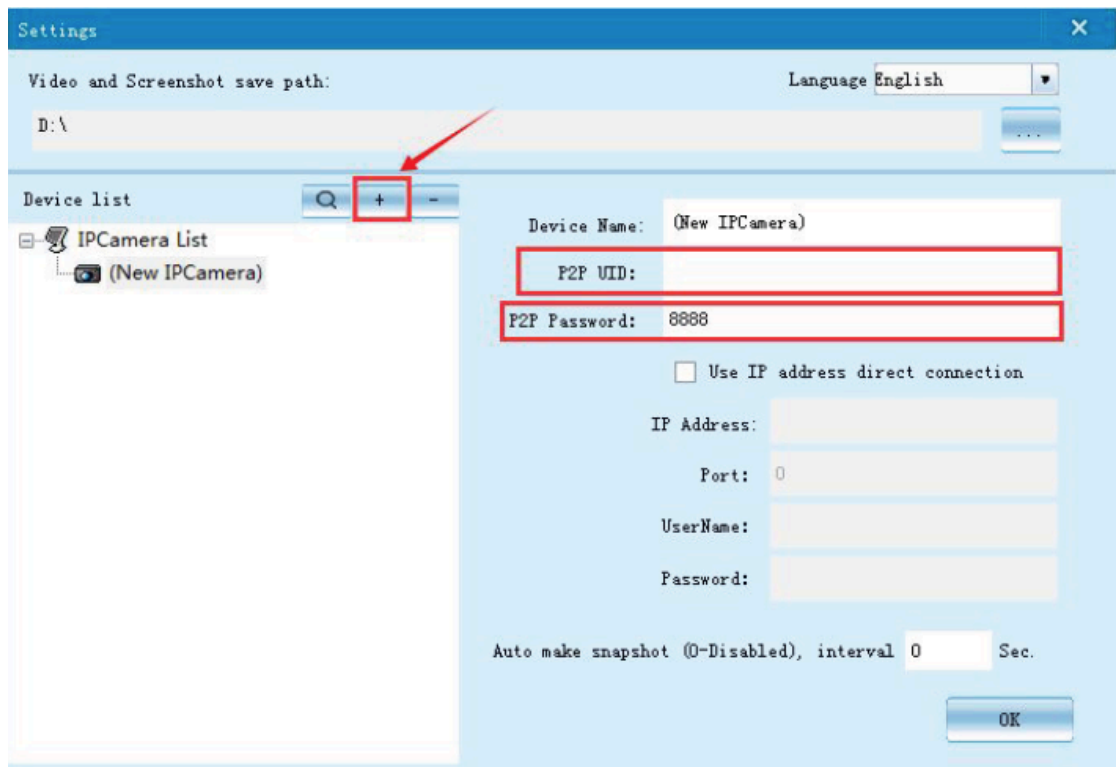
as follows:



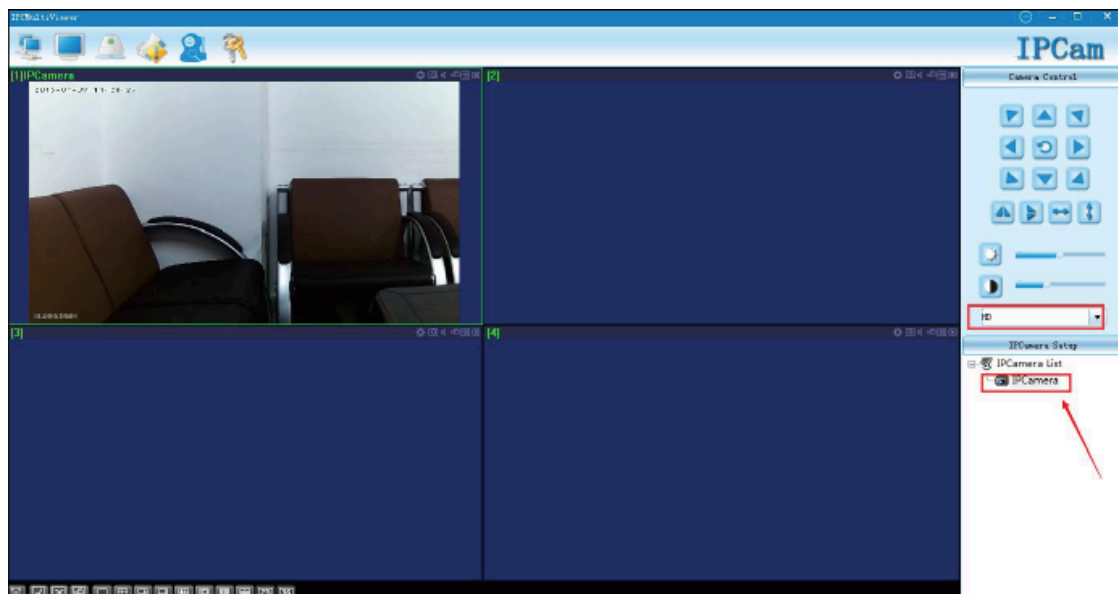
1.2 Input a self-defined device name. Default username is admin, password (null), then click OK to finish.



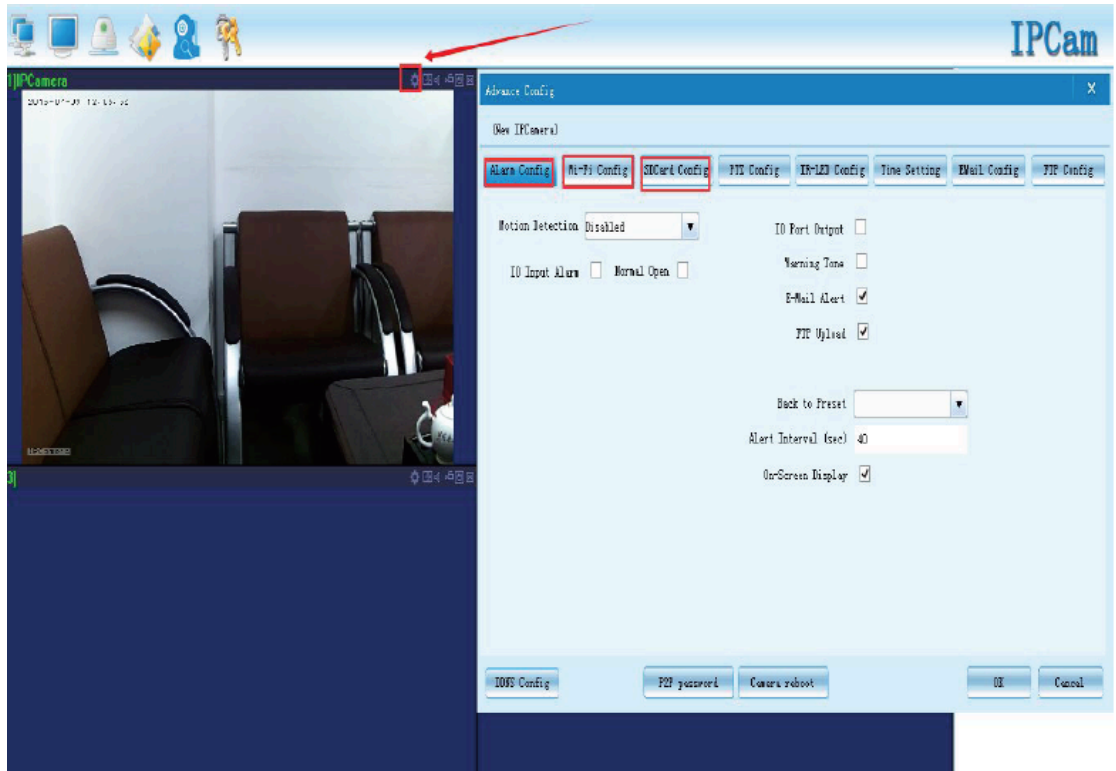
2. Users can add P2P UID/device name manually if needed, Click as below. Then click OK to finish.



3. Select one in device list and double-click it to the displayed window as shown below:



4. About: Motion Detection, Wifi, SD Card.



5. Main interface function.



: PTZ direction control.



: Start "up/down" and "left/right" scanning.



: Image inversion.



Auto connect all cameras



Full Screen



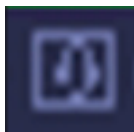
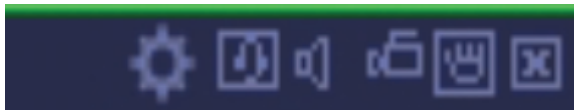
View Video Files



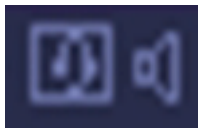
View Snapshot



Change P2P Password

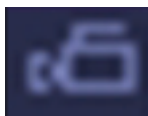


Open voice monitoring.

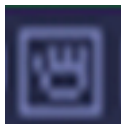


Click both to realise two-way voice between PC

client and camera.



Record local video.



Snapshot (Click once to capture one picture).



Multiple camera monitoring.

Note:

The device name easy to remember just write

Paste on P2P UID

Password had not been changed, then that is 8888 if you have modified, please fill in the date.

Note:

The device name easy to remember just write

Paste on P2P UID

Password had not been changed, then that is 8888 if you have modified, please fill in the date.

7. Specifications

Resolution Ratio	1080P/720P/640P/320P
Video Format	AVI
Frame Number	25
Visual Angle	150 degree
Motion Detection Camera Shooting	Straight line 6 meters
Minimal Illumination	1LUX
Video Duration	Over 1 Hours
Compressed Format	H.264
Recording Range	5m ²
Consumption	240MA/3.7V
Storage Temperature	-20-80 degree centigrade
Operating Temperature	-10-60 degree centigrade
Operation Humidity	15-85%RH
Memory Card Type	TF card
Player Software	VLCPlayer/SMPlayer
Computer Operating	Windows/Mac OS X

System	
Mobile Phone Operating System	Android/iOS
Web browser	IE7 and above,chrome,firefox safari.etc
Largest customer	4

8.FAQ

1. Why remote monitoring is not smooth?

You should choose suitable resolution to watch according to your Internet.

2. Why SD card cannot save?

SD card must be formatted if this is your first time to use.

3. Why Connection is not on the network?

Select the correct connection way according to your network

4. Why APP remote viewing SD card video is not smooth?

As a result of the mobile decoding ability are different, and you can adjust video equipment according to your mobile's resolution

5. How to find my password?

To press reset key with 10 seconds and Restore the factory Settings.

Note:

The device name easy to remember just write

Paste on P2P UID

Password had not been changed, then that is 8888 if you have modified, please fill in the date.

Special note:

1. If the camera is not connected to the router, please reset, even after a hot machine to configure.
2. If the camera does not read the memory card, or mobile phone in the LAN advanced settings in the background formatting after use.
2. Shutdown Reset: Please re-operation off and reset when you

see the red light.

Made in China