



Catalog #: \_\_\_\_\_ Project: \_\_\_\_\_

Prepared By: \_\_\_\_\_ Date: \_\_\_\_\_ Type: \_\_\_\_\_

# Mirada Small Wall Sconce (XWS)

## Outdoor LED Wall Light

**IP65 IK10**

### OVERVIEW

|                           |               |
|---------------------------|---------------|
| Lumen Output Range        | 2,000 - 6,000 |
| Wattage Range             | 15 - 52       |
| Efficacy Range (LPW)      | 119 - 151     |
| Luminaire Weight lbs (kg) | 8 (3.6)       |

### QUICK LINKS

[Ordering Guide](#)[Performance](#)[Photometrics](#)[Dimensions](#)

## FEATURES & SPECIFICATIONS

### Construction

- Rugged die-cast aluminum housing.
- Fixtures are finished with LSI's DuraGrip® polyester powder coat finishing process. The DuraGrip finish withstands extreme weather changes without cracking or peeling. Other standard LSI finishes available. Consult factory.
- Extended housing available with 1/2" threaded hubs for surface conduit and rated wire.
- Standard luminaire shipping weight: 10 lbs in carton.
- Max luminaire shipping weight (with back housing): 20 lbs in carton.

### Optical System

- Choice of acrylic lens or high impact resistant polycarbonate lens
- The lens is fully gasketed with a one-piece solid silicone gasket to keep out moisture and dust, providing an IP65 rating for the luminaire
- Reflector system with recessed light engine reduces glare and brightness.
- Forward Throw Wide and Medium distributions available.
- Optional diffused lens for reduced LED pixilation over the lens and maximum visual comfort.
- Zero uplight.
- Available in 5000K, 4000K, 3500K, 3000K and 2700K color temperatures per ANSI C78.377.
- Minimum CRI of 80

### Electrical

- High-performance driver features over-voltage under-voltage, short-circuit and over temperature protection.
- 0-10V dimming (10% - 100%) standard.
- Standard Universal Voltage (120-277 VAC) Input 50/60 Hz or optional High Voltage (347-480 VAC).
- L70 Calculated Life: >60k Hours
- Total harmonic distortion: <20%
- Operating temperature: -40°C to +50°C (-40°F to +122°F).
- Power factor: >.90
- Input power stays constant over life.
- Optional 10kV surge protection device meets a minimum Category C Low operation (per ANSI/IEEE C62.41.2).
- High-efficacy LEDs mounted to metal-core circuit board to maximize heat dissipation
- Driver is fully encased in potting material for moisture resistance. Driver complies with FCC standards. Accessible driver and electrical components.
- Optional Dual Drivers/Circuit/Power Feeds.
- Optional battery backup provides 90-minutes of constant power to the LED system, ensuring code compliance. A test switch/indicator button is installed on the housing for ease of maintenance. Standard battery rated for 0° to 50° with cold weather battery rated for -20°C to 50°. 120-277V Only.

### Controls

- Optional integral passive infrared Bluetooth™ motion and photocell sensor. Fixtures operate independently and can be commissioned via iOS or Android configuration app.

- LSI's AirLink™ wireless control system options reduce energy and maintenance costs while optimizing light quality 24/7.

### Installation

- Universal wall mounting plate mounts directly to vertical surface or 4" junction box (octagonal or square).
- Luminaire hinges to the top of the mounting plate and is secured via two flush mount screws that help to conceal the hardware and prevent over tightening during installation.

### Warranty

- LSI luminaires carry a 5-year limited warranty. Refer to <https://www.lsicorp.com/resources/terms-conditions-warranty/> for more information.

### Listings

- Listed to UL 1598 and UL 8750.
- Meets Buy American Act requirements.
- IDA compliant; with 2700K or 3000K color temperature selection.
- Title 24 Compliant; see local ordinance for qualification information.
- Suitable for wet locations.
- IP65 rated luminaire per IEC 60598-1.
- IK10 rated luminaire per IEC 60622 mechanical impact code with clear polycarbonate lens (MTP).
- DesignLights Consortium® (DLC) qualified product. Not all versions of this product are DLC qualified. Please check the DLC Qualified Products List at [www.designlights.org/QPL](http://www.designlights.org/QPL) to confirm which versions are qualified.





Type: \_\_\_\_\_

# Mirada Small Wall Sconce (XWS)

[Back to Quick Links](#)

## ORDERING GUIDE

TYPICAL ORDER EXAMPLE: **XWS LED 6L FTW UNV DIM 40 70CRI ALBCS1 BLK EH**

| Luminaire Prefix               | Light Source | Lumen Package  | Distribution/Lens  | Voltage   | Driver                      | Color Temp  | Color Rendering |
|--------------------------------|--------------|--|--|---|-----------------------------|---|-----------------|
| XWS - Mirada Small Wall Sconce | LED          | 2L - 2,000 lms<br>3L - 3,000 lms<br>5L - 5,000 lms<br>6L - 6,000 lms<br>Custom Lumen Packages <sup>1</sup> | FTW - Forward Throw Wide Clear Acrylic<br>MT - Medium Throw Clear Acrylic<br>MTD - Medium Throw Diffuse Acrylic<br>MTP - Medium Throw Clear Polycarbonate<br>MTPD - Medium Throw Diffuse Polycarbonate | UNV - Universal Voltage (120-277V)<br>HV - High Voltage (347-480V) <sup>2</sup> | DIM - 0-10v Dimming (0-10%) | 50 - 5,000K<br>40 - 4,000K<br>35 - 3,500K<br>30 - 3,000K<br>27 - 2,700K | 80CRI - 80 CRI  |

| Controls  | Finish   | Options   |
|---|--|---|
| <b>(Blank)</b> - None<br><br><b>Wireless Controls<sup>8</sup></b><br><b>ALSC</b> - AirLink Synapse Control System <sup>3</sup><br><b>ALSCS1</b> - AirLink Synapse Control System with 8-12' MH Motion Sensor <sup>3,4</sup><br><b>ALSCS2</b> - AirLink Synapse Control System with 12-20' MH Motion Sensor <sup>3,4</sup><br><b>ALBCS1</b> - AirLink Blue Wireless Motion & Photo Sensor Controller (8-24' mounting height) <sup>3,4</sup><br><br><b>Standalone Controls</b><br><b>EXT</b> - 0-10v Dimming leads extended to housing exterior<br><b>IMSBT1</b> - Integral Bluetooth™ Motion and Photocell Sensor 8-24' MH <sup>3,4,5</sup><br><br><b>Button Type Photocells</b><br><b>PCI120</b> - 120V<br><b>PCI208-277</b> - 208-277V<br><b>PCI347</b> - 347V | <b>BLK</b> - Black<br><b>BRZ</b> - Dark Bronze<br><b>GMG</b> - Gun Metal Gray<br><b>GPT</b> - Graphite<br><b>MSV</b> - Metallic Silver<br><b>PLP</b> - Platinum Plus<br><b>SVG</b> - Satin Verde Green<br><b>WHT</b> - White | <b>(Blank)</b> - None<br><b>2DP</b> - Dual Driver, Circuit & Power Feed <sup>3,4,6,7</sup><br><b>BB</b> - Battery Back-up (0°C) <sup>3,4,9</sup><br><b>CWBB</b> - Cold Weather Battery Backup(-20°C) <sup>3,4,9</sup><br><b>EH</b> - Extended Housing <sup>4</sup><br><b>SP1</b> - 10kV Surge Protection Device<br><b>TP</b> - Tamper Proof <sup>10</sup> |

## ACCESSORY ORDERING INFORMATION<sup>8</sup>

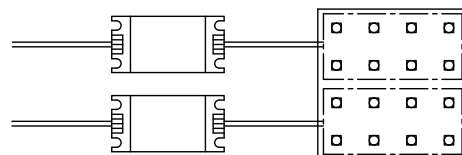
| Lens/Housing Accessories                        |              |
|---|--------------|
| Description                                     | Order Number |
| XWS Performance Lens (FTW)                      | 758270       |
| XWS Clear Acrylic Lens (MT)                     | 758267       |
| XWS Diffuse Acrylic Lens (MTD)                  | 758268       |
| XWS Polycarbonate Vandal Lens (MTP)             | 758271       |
| XWS Extended Housing/Surface Conduit Wiring Box | 758274CLR    |
| XWS Spacer Plate/Wiring Box                     | 760159CLR    |
| XWS Tamper Resistant Hardware                   | 783974       |
| XWS Tamper Resistant Hardware Screw Driver      | 783975       |

### FOOTNOTES:

- Custom lumen and wattage packages available, consult factory. Values are within industry standard tolerances but not DLC listed.
- Not available in 2L lumen package.
- Option requires EH extended housing.
- For applications with surface conduit, there is limited hub accessibility when ordering with controls, battery backup or dual driver options. Consult factory.
- IMSBT is field configurable via the LSI app that can be downloaded from your smartphone's native app store.
- Not available with controls.
- Not available in 2L and 3L lumen packages.
- Accessories are shipped separately and field installed.
- Universal Voltage Only (120-277V).
- Tamper-proof screwdriver must be ordered separately (see accessory ordering information)

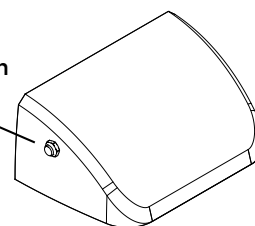
### Dual Driver, Circuit & Power Feed

Dual drivers and circuit provide redundant sources to ensure that failure of one component will not leave total darkness in any space. Dual power feeds allow for wiring to inverters to reduce load during emergency operation. Extended housing required.



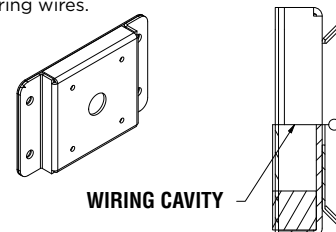
### Button Photocell

Luminaire shown with PCI



### Spacer Plate/Wiring Box

8.25" x 5.25" x 1.07" wall spacer plate allows the luminaire to float off the wall and provides space for securing wires.



### Battery Backup

Emergency battery system provides 90-minutes of constant power to the LED system, ensuring code compliance. A test switch/indicator button is installed on the housing for ease of maintenance. The fixture delivers ~1200 lumens during emergency mode. Extended housing required.



Luminaire shown with sensor & battery backup





# Mirada Small Wall Sconce (XWS)

## PERFORMANCE

[Back to Quick Links](#)

| DELIVERED LUMENS* |              |     |                  |          |            |                  |          |            |                  |          |            |                  |          |            |                  |          |            |         |
|-------------------|--------------|-----|------------------|----------|------------|------------------|----------|------------|------------------|----------|------------|------------------|----------|------------|------------------|----------|------------|---------|
| Lumen Package     | Distribution | CRI | 2700K CCT        |          |            | 3000K CCT        |          |            | 3500K CCT        |          |            | 4000K CCT        |          |            | 5000K CCT        |          |            | Wattage |
|                   |              |     | Delivered Lumens | Efficacy | BUG Rating | Delivered Lumens | Efficacy | BUG Rating | Delivered Lumens | Efficacy | BUG Rating | Delivered Lumens | Efficacy | BUG Rating | Delivered Lumens | Efficacy | BUG Rating |         |
| 2L                | FTW          | 80  | 1,961            | 131      | B1-U0-G1   | 2,071            | 138      | B1-U0-G1   | 2,120            | 141      | B1-U0-G1   | 2,145            | 143      | B1-U0-G1   | 2,167            | 144      | B1-U0-G1   | 15      |
|                   | MT           |     | 2,023            | 135      | B1-U0-G0   | 2,136            | 142      | B1-U0-G0   | 2,188            | 146      | B1-U0-G0   | 2,216            | 148      | B1-U0-G0   | 2,236            | 149      | B1-U0-G0   |         |
|                   | MTD          |     | 1,892            | 126      | B1-U0-G1   | 1,997            | 133      | B1-U0-G1   | 2,045            | 136      | B1-U0-G1   | 2,072            | 138      | B1-U0-G1   | 2,090            | 139      | B1-U0-G1   |         |
|                   | MTP          |     | 2,020            | 135      | B1-U0-G0   | 2,133            | 142      | B1-U0-G0   | 2,184            | 146      | B1-U0-G0   | 2,213            | 148      | B1-U0-G0   | 2,233            | 149      | B1-U0-G0   |         |
|                   | MTPD         |     | 1,744            | 116      | B1-U0-G1   | 1,842            | 123      | B1-U0-G1   | 1,887            | 126      | B1-U0-G1   | 1,911            | 127      | B1-U0-G1   | 1,928            | 129      | B1-U0-G1   |         |
| 3L                | FTW          | 80  | 3,432            | 132      | B1-U0-G1   | 3,624            | 139      | B1-U0-G1   | 3,710            | 143      | B1-U0-G1   | 3,759            | 145      | B1-U0-G1   | 3,793            | 146      | B1-U0-G1   | 26      |
|                   | MT           |     | 3,542            | 136      | B1-U0-G1   | 3,739            | 144      | B1-U0-G1   | 3,829            | 147      | B1-U0-G1   | 3,879            | 149      | B1-U0-G1   | 3,914            | 151      | B1-U0-G1   |         |
|                   | MTD          |     | 3,495            | 134      | B1-U0-G1   | 3,690            | 142      | B1-U0-G1   | 3,778            | 145      | B1-U0-G1   | 3,828            | 147      | B1-U0-G1   | 3,862            | 149      | B1-U0-G1   |         |
|                   | MTP          |     | 3,537            | 136      | B1-U0-G1   | 3,735            | 144      | B1-U0-G1   | 3,824            | 147      | B1-U0-G1   | 3,874            | 149      | B1-U0-G1   | 3,909            | 150      | B1-U0-G1   |         |
|                   | MTPD         |     | 3,054            | 117      | B1-U0-G1   | 3,224            | 124      | B1-U0-G1   | 3,303            | 127      | B1-U0-G1   | 3,345            | 129      | B1-U0-G1   | 3,375            | 130      | B1-U0-G1   |         |
| 5L                | FTW          | 80  | 4,980            | 128      | B1-U0-G1   | 5,257            | 135      | B1-U0-G1   | 5,383            | 138      | B1-U0-G1   | 5,454            | 140      | B1-U0-G1   | 5,503            | 141      | B1-U0-G1   | 39      |
|                   | MT           |     | 5,138            | 132      | B1-U0-G1   | 5,425            | 139      | B1-U0-G1   | 5,555            | 142      | B1-U0-G1   | 5,628            | 144      | B1-U0-G1   | 5,678            | 146      | B1-U0-G1   |         |
|                   | MTD          |     | 4,805            | 123      | B1-U0-G1   | 5,074            | 130      | B1-U0-G1   | 5,195            | 133      | B2-U0-G1   | 5,263            | 135      | B2-U0-G1   | 5,310            | 136      | B2-U0-G1   |         |
|                   | MTP          |     | 5,132            | 132      | B1-U0-G1   | 5,418            | 139      | B1-U0-G1   | 5,548            | 142      | B1-U0-G1   | 5,621            | 144      | B1-U0-G1   | 5,671            | 145      | B1-U0-G1   |         |
|                   | MTPD         |     | 4,430            | 114      | B1-U0-G1   | 1,677            | 120      | B1-U0-G1   | 4,791            | 123      | B1-U0-G1   | 4,852            | 124      | B1-U0-G1   | 4,896            | 126      | B1-U0-G1   |         |
| 6L                | FTW          | 80  | 6,362            | 122      | B1-U0-G1   | 6,717            | 129      | B2-U0-G1   | 6,877            | 132      | B2-U0-G1   | 6,968            | 134      | B2-U0-G1   | 7,031            | 135      | B2-U0-G1   | 52      |
|                   | MT           |     | 6,564            | 126      | B2-U0-G1   | 6,931            | 133      | B2-U0-G1   | 7,097            | 136      | B2-U0-G1   | 7,190            | 138      | B2-U0-G1   | 7,254            | 140      | B2-U0-G1   |         |
|                   | MTD          |     | 6,139            | 118      | B2-U0-G1   | 6,482            | 125      | B2-U0-G1   | 6,637            | 128      | B2-U0-G1   | 6,724            | 129      | B2-U0-G1   | 6,784            | 130      | B2-U0-G1   |         |
|                   | MTP          |     | 6,354            | 122      | B2-U0-G1   | 6,708            | 129      | B2-U0-G1   | 6,869            | 132      | B2-U0-G1   | 6,959            | 134      | B2-U0-G1   | 7,021            | 135      | B2-U0-G1   |         |
|                   | MTPD         |     | 5,659            | 109      | B1-U0-G1   | 5,975            | 115      | B2-U0-G1   | 6,121            | 118      | B2-U0-G1   | 6,199            | 119      | B2-U0-G1   | 6,255            | 120      | B2-U0-G1   |         |

\*LEDs are frequently updated therefore values are nominal.

| ELECTRICAL DATA* |      |      |      |      |      |      |
|------------------|------|------|------|------|------|------|
| Lumen Package    | 120V | 208V | 240V | 277V | 347V | 480V |
| 2L               | 0.12 | 0.07 | 0.06 | 0.05 | 0.04 | 0.03 |
| 3L               | 0.21 | 0.12 | 0.11 | 0.09 | 0.07 | 0.05 |
| 5L               | 0.32 | 0.19 | 0.16 | 0.14 | 0.11 | 0.08 |
| 6L               | 0.43 | 0.25 | 0.22 | 0.19 | 0.15 | 0.11 |

\*Electrical data at 25C (77F). Actual wattage may differ by +/-10%.

| RECOMMENDED LUMEN MAINTENANCE <sup>1</sup> |                     |                       |                       |                       |                        |
|--|---------------------|-----------------------|-----------------------|-----------------------|------------------------|
| Ambient Temp                               | Lumen Multiplier    |                       |                       |                       |                        |
| C  | 0 hrs. <sup>2</sup> | 25K hrs. <sup>2</sup> | 50K hrs. <sup>2</sup> | 75K hrs. <sup>3</sup> | 100K hrs. <sup>3</sup> |
| 0 C -25 C                                  | 100%                | 97%                   | 92%                   | 88%                   | 84%                    |
| 40 C                                       | 100%                | 95%                   | 90%                   | 85%                   | 81%                    |

### FOOTNOTES:

- Lumen maintenance values at 25°C are calculated per TM-21 based on LM-80 data and in-situ luminaire testing.
- In accordance with IESNA TM-21-11, Projected Values represent interpolated value based on time durations that are within six times (6X) the IESNA LM-80-08 total test duration (in hours) for the device under testing ((DUT) i.e. the packaged LED chip).
- In accordance with IESNA TM-21-11, Calculated Values represent time durations that exceed six times NA LM-80-08 total test duration (in hours) for the device under testing ((DUT) i.e. the packaged LED chip).





# Mirada Small Wall Sconce (XWS)

## PHOTOMETRICS

[Back to Quick Links](#)

All published luminaire photometric testing performed to IESNA LM-79 standards. ISO footcandle plots below demonstrate the Mirada Wall Sconce (XWM) light patterns only. Not for total fixture output. For complete specifications and IES files, see website.

### XWS-LED-5L-FTW-40

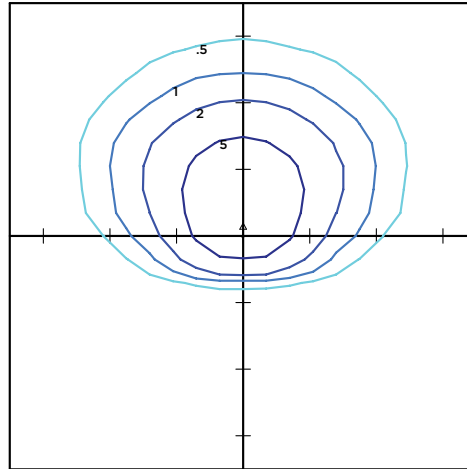
#### LUMINAIRE DATA

| Type FTW Distribution |                      |
|-----------------------|----------------------|
| Description           | 4000 Kelvin, 80 CRI  |
| Delivered Lumens      | 5,454                |
| Watts                 | 39                   |
| Efficacy              | 140                  |
| IES Type              | Type IV - Very Short |
| BUG Rating            | B1-U0-G1             |

#### Zonal Lumen Summary

| Zone               | Lumens | %Luminaire |
|--------------------|--------|------------|
| Low (0-30)°        | 1191   | 20%        |
| Medium (30-60)°    | 2668   | 50%        |
| High (60-80)°      | 1508   | 28%        |
| Very High (80-90)° | 87     | 1%         |
| Uplight (90-180)°  | 0      | 0%         |
| Total Flux         | 5454   | 100%       |

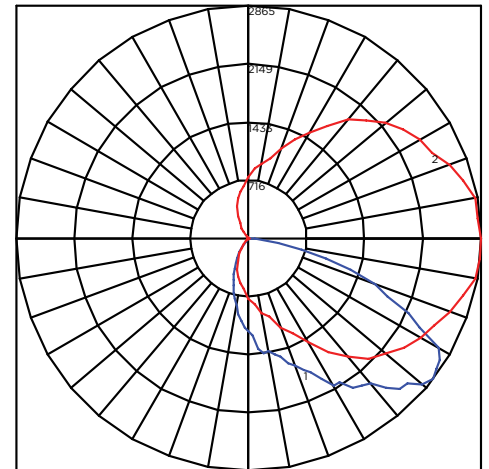
#### ISO FOOTCANDLE



10' Mounting Height/10' Grid Spacing

■ 5 FC ■ 2 FC ■ 1 FC ■ 0.5 FC

#### POLAR CURVE



### XWS-LED-5L-MT-40

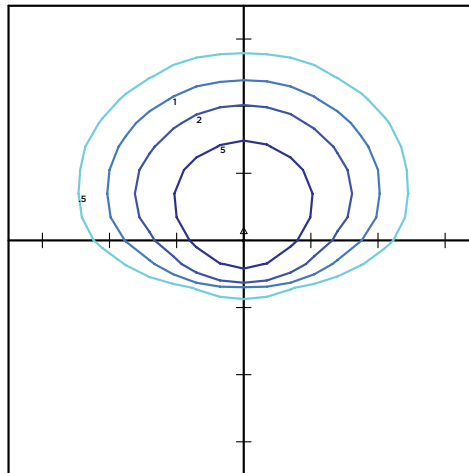
#### LUMINAIRE DATA

| Type MT Distribution |                       |
|----------------------|-----------------------|
| Description          | 4000 Kelvin, 80 CRI   |
| Delivered Lumens     | 5,628                 |
| Watts                | 39                    |
| Efficacy             | 144                   |
| IES Type             | Type III - Very Short |
| BUG Rating           | B1-U0-G1              |

#### Zonal Lumen Summary

| Zone               | Lumens | %Luminaire |
|--------------------|--------|------------|
| Low (0-30)°        | 1134   | 22%        |
| Medium (30-60)°    | 2788   | 54%        |
| High (60-80)°      | 1194   | 23%        |
| Very High (80-90)° | 11     | 0%         |
| Uplight (90-180)°  | 0      | 0%         |
| Total Flux         | 5127   | 100%       |

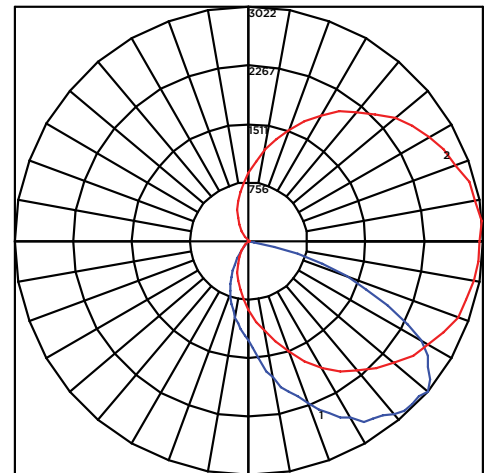
#### ISO FOOTCANDLE



10' Mounting Height/10' Grid Spacing

■ 5 FC ■ 2 FC ■ 1 FC ■ 0.5 FC

#### POLAR CURVE





# Mirada Small Wall Sconce (XWS)

## PHOTOMETRICS (CONT.)

### XWS-LED-5L-MTD-40

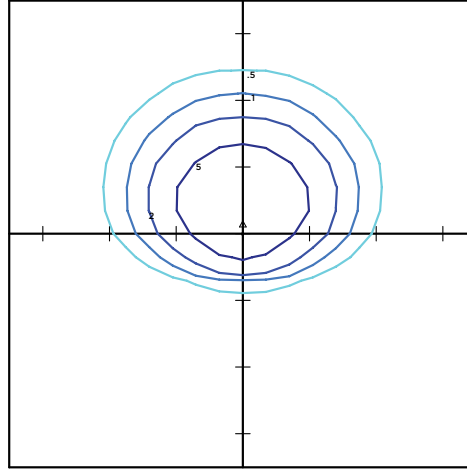
#### LUMINAIRE DATA

| Type MTD Distribution |                       |
|-----------------------|-----------------------|
| Description           | 4000 Kelvin, 80 CRI   |
| Delivered Lumens      | 4,330                 |
| Watts                 | 39                    |
| Efficacy              | 135                   |
| IES Type              | Type III - Very Short |
| BUG Rating            | B2-U0-G1              |

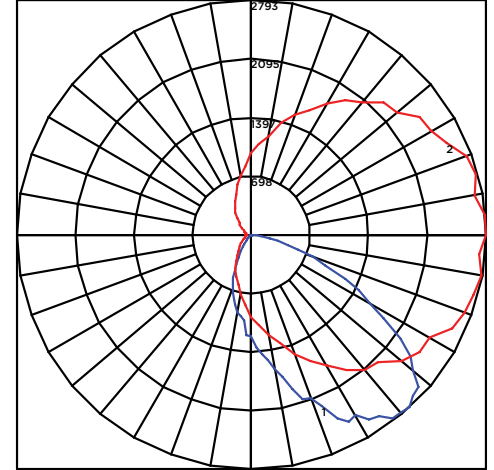
#### Zonal Lumen Summary

| Zone               | Lumens | %Luminaire |
|--------------------|--------|------------|
| Low (0-30)°        | 1387   | 25%        |
| Medium (30-60)°    | 2721.4 | 57%        |
| High (60-80)°      | 1068   | 17%        |
| Very High (80-90)° | 86.8   | 1%         |
| Uplight (90-180)°  | 0      | 0%         |
| Total Flux         | 5263   | 100%       |

#### ISO FOOTCANDLE



#### POLAR CURVE



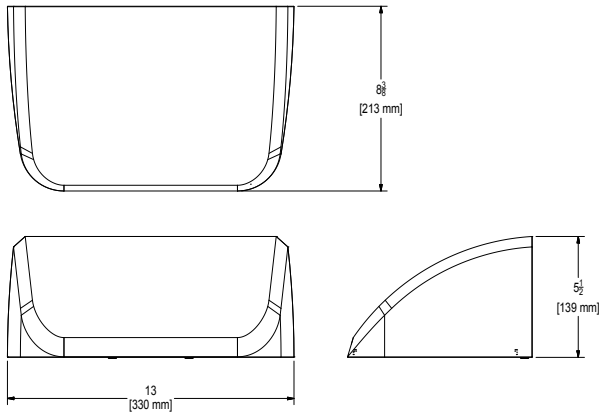
#### 10' Mounting Height/10' Grid Spacing

■ 5 FC ■ 2 FC ■ 1 FC ■ 0.5 FC

## PRODUCT DIMENSIONS

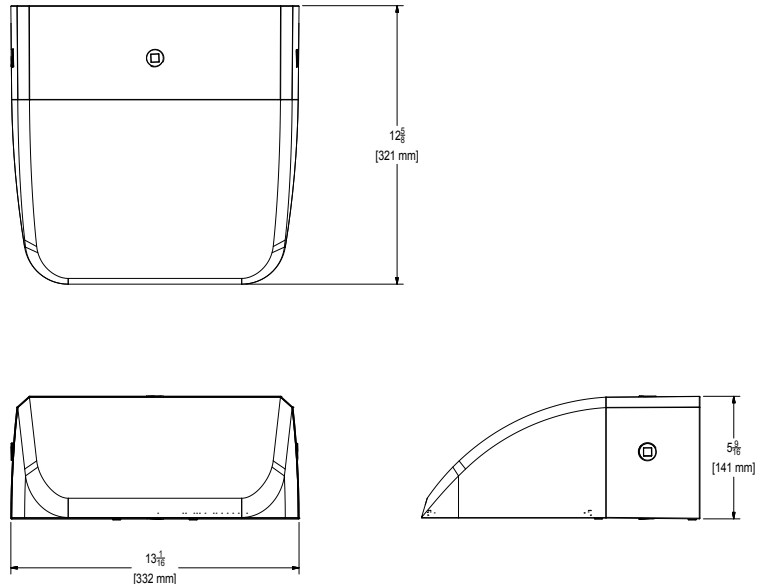
[Back to Quick Links](#)

#### STANDARD HOUSING

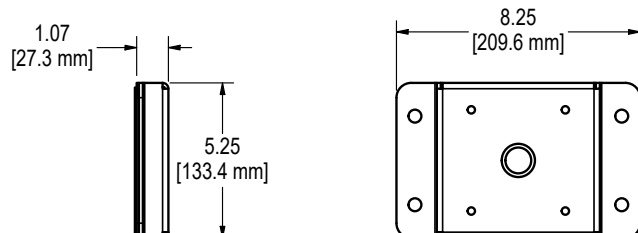


#### SCWB EXTENDED HOUSING

(Required for Wireless Controls, IMSBT, Battery Backup and 2DP Options)



#### WALL SPACER PLATE





## Mirada Small Wall Sconce (XWS)

### CONTROLS

---

#### AirLink Wireless Lighting Controller

The AirLink integrated controller is a California Title 24 compliant lighting controller that provides real-time light monitoring and control with utility-grade power monitoring. It includes a 24V sensor input and power supply to connect a sensor into the outdoor AirLink wireless lighting system. The wireless integrated controller is compatible with this fixture.

[Click here to learn more about AirLink.](#)

#### Integral Bluetooth™ Motion and Photocell Sensor (IMSBT)

Slim low profile sensor provides multi-level control based on motion and/or daylight. Sensor controls 0-10 VDC LED drivers and is rated for cold and wet locations (-30° C to 70° C). Two unique PIR lenses are available and used based on fixture mounting height. All control parameters are adjustable via an iOS or Android App capable of storing and transmitting sensor profiles.

[Click here to learn more about IMSBT.](#)

#### AirLink Blue

Wireless Bluetooth Mesh Outdoor Lighting Control System that provides energy savings, code compliance and enhanced safety/security for parking lots and parking garages. Three key components; Bluetooth wireless radio/sensor controller, Time Keeper and an iOS App. Capable of grouping multiple fixtures and sensors as well as scheduling time-based events by zone. Radio/Sensor Controller is factory integrated into Area/Site, Wall Mounted, Parking Garage and Canopy luminaires.

[Click here to learn more about AirLink Blue.](#)

