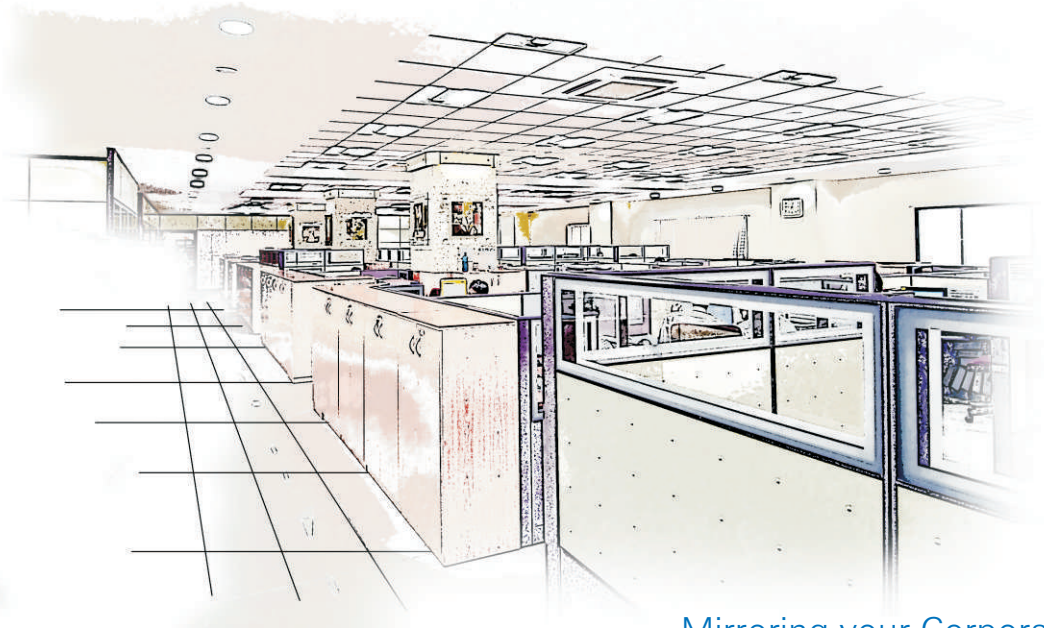




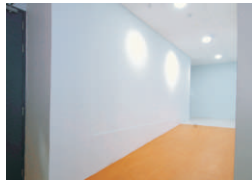
Turnkey Interior Solutions
(Commercial & Industrial)



Mirroring your Corporate Vision



FALSE
CEILINGS



PARTITIONS,
DRY WALL
CONSTRUCTION



ACCESS
FLOORS



MODULAR FURNITURE
&
TURNKEY INTERIORS



FENESTRATION
DOOR / WINDOWS /
FRAMES

WHY nuCON?

nuCON is the market leader in the field of Interior solutions on account of the following attributes:

- 35 years of strong industry experience.
- Strong knowledge base of a wide range of products.
- Expertise in application and end use of the products.
- Backed up by a dedicated team of project directors and executives.
- Easy and immediate availability of products directly from the respective manufacturers.
- Services from various cities across India, through a network of team members.
- Techno-commercial back up for concept generation and execution.
- In-depth understanding of specific industry related applications and their solutions.

SERVICES:

nuCON has a wide range of capabilities and is in a position to offer end to end, **turnkey solutions for interiors**. It has a variety of high quality solutions to offer in:

- False Ceilings
- Partitions
- Access Floors
- Doors, Door Frames and Windows
- Modular Furniture
- Pre Engineered Accommodations
- Safety and Sun Control Films
- Passive Fire Protection Products

Over the years nuCON has empowered hundreds of small and medium sized companies with branding, image building, as well as higher productivity to ensure unique **STYLE STATEMENTS & STATUS** for them.



Turnkey Interior Solutions
(Commercial & Industrial)



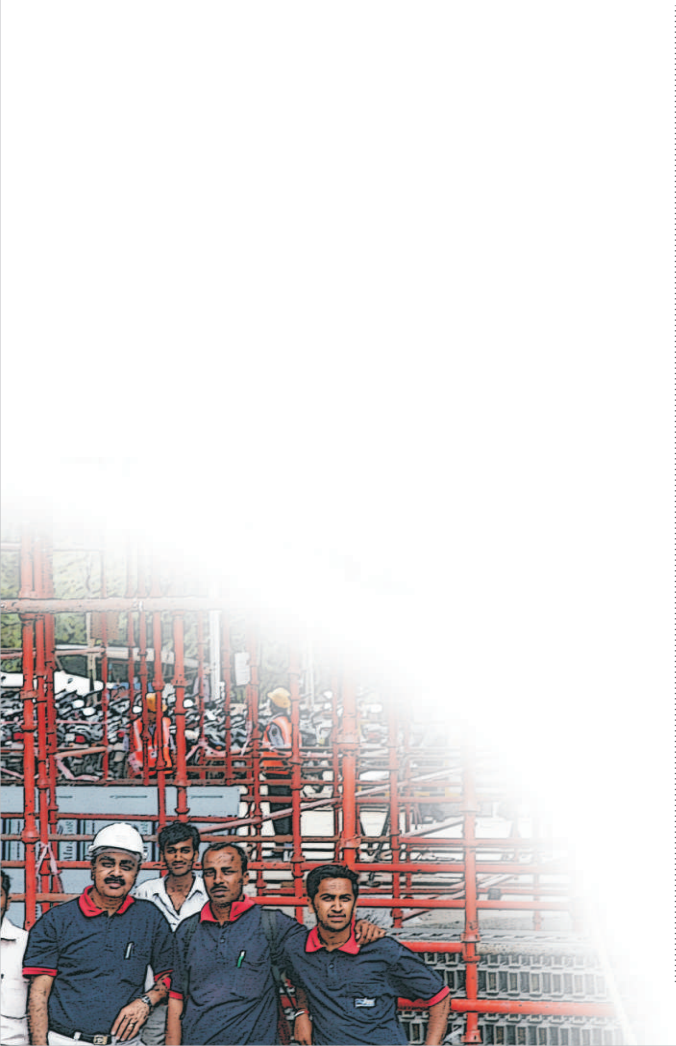


TEAM nuCON

nuCON's core management team is a closely knit group of experienced professionals, who are ably supported with a second line of managers. Each member of the team, specialises in a specific domain of design and execution of projects. This core team is amply supported by a large number of experts from various domains. Thus every step of the entire project is planned and co-ordinated. The result is superior project management, service and outcomes for our clients.

nuCON's service is a result of the following approach which involves:

- Education
- Training
- Planning
- Execution



FALSE CEILINGS



nuCON is glad to provide utility based solutions / products for your requirements of false ceilings at the most optimum rates to suit your budget.

With a wide range of options available with us, we can provide you the best of products to suit your specific requirements.

We also have specialized industrial applications like, walk-able false ceilings, clean room areas, industrial acoustic applications and more.

Plain seamless false ceiling

- Gypsum
- Calcium Silicate Board
- Cement Fibre Board
- Aluminium sheet

Grid false ceiling - Lay in type

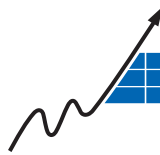
- Metal - GI / Aluminium
- Mineral fibre tiles
- Calcium silicate tiles with design
- Calcium silicate tiles - plain
- Mineral fibre tiles
- Gypsum tiles
- Magnesium oxide tiles

Applications

- Clean Room
- Acoustic
- Water Borne Areas
- Walkable
- Architectural / Designer



TECHNO



FALSE CEILINGS

Techno Acoustic™
METAL CEILING TILES

Techno T-Grid™
SUSPENSION SYSTEMS

Techno Open Cell™
CEILING SYSTEMS

TECHNO CEILING PRODUCTS is the largest manufacturer of ceiling suspension systems in India & also the only one having an integrated T-Grid and ceiling tiles plant.

WHY METAL FALSE CEILINGS

Specific benefits / advantages over other types of ceilings.

- Clean & classy looks.
- Sturdy and stable (does not get easily damaged in case of handling).
- Totally modular and relocatable.
- Cleanable & washable.
- Excellent acoustic properties in perforated panels (0.75 to 0.9 NRC).
- Cost effective comparable to mineral fiber false ceilings.
- 100% recyclable and has good disposal value.
- Prefinished on both sides & require no maintenance.
- Highly recommended for use in offices, hospitals, & public places for rich looks.

WHY TECHNO

- 100% Manufactured in India with Indian raw materials.
- Integrated T Grid & metal ceiling tile plant - only one in India.
- State of the art manufacturing facilities.
- Immediate deliveries of wide range of products.
- Strictest quality norms under strict manufacturing standards maintained by our experienced manufacturing teams.



PRODUCT RANGE

SUSPENSION SYSTEM

600 X 600 MM T GRIDS

- T - 15 - 15 mm width slim line
- T - 24 - 24 mm width
- T - 15 - CENTRA WHITE / BLACK
- T - 15 - SILHOUTTE / SHADOW LINE

Colours

- White
- Black

METAL CEILING TILES

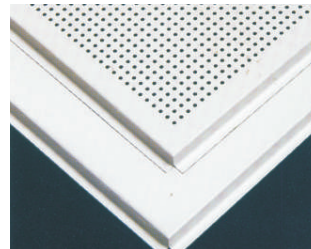
- T - 24 Lay in - Plain / Perforated
- T - 15 Lay in - Plain / Perforated
- CLIP IN - Plain / Perforated
- T - 15 Flush Tegular

Colours

- White

ARCHITECTURAL CEILINGS

- Open Cell Ceilings
- Grid Based Cell Ceilings



PARTITIONS



Dry Wall Construction solutions are provided by [nuCON](#). From Acoustic / sound proof clean room partition to fire resistant, we can provided a solution for every need. Light weight, hollow / solid walls from 1.5m to 10m height are designed and installed in our projects.

Material

- Dry Wall Construction
- Aluminium
- Fully Glazed
- Solid Gypsum Walls
- Fibre Cement Panels
- EPS Sandwich Panels
- Aerated Concrete Panels

Applications

- Clean Rooms
- Industrial Walls
- Commercial Partitions
- Acoustic Enclosures
- External Cladding
- Fire Rated Walls



MODULAR FURNITURE

nuCON has a team of experts to cater to all innovative and specific needs related to Office furniture and allied interior solutions. nuCON is the business associate of India's leading office furniture company `BP Ergo Ltd.` Having a wide range of products like

- Modular workstations
- Full height Partitions
- Conference tables
- Executive Chairs
- Modular storage
- School Furniture

and modern office accessories to offer.

Green Credits with Ergo furniture can assist in gaining points for both LEED-NC and LEED-CI certification processes and also try to strike a perfect balance between the `three Ps' – People, Planet and profit.

Each product would be serviced with our capable team with strong support and backup from our principal.

Along with our professional design associates, we can also provide total project execution which includes all services right from designing office layouts to delivering ready to plug in office.

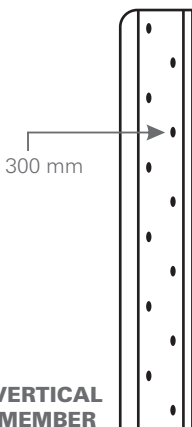
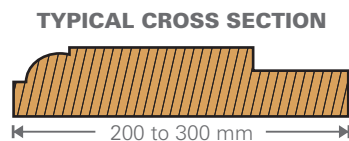


GWP FLUSH DOORS

Factory made, solid core, hot pressed seasoned and treated hard wood, P/F bonded surface finishes - commercial face, teak veneer, designed veneer, resin coated & laminated.

nuCON DOOR FRAME SCANTLING

40 to 50 mm thick, seasoned & treated, solid core, P/F bonded hot pressed, waterproof.
width 200 to 300 mm



- Accucel PVC door shutters.
- Radiant - Industrial - General purpose / Fire rated doors.



Fenesta is India's largest manufacturer of UPVC windows.

Fenesta windows are made from extruded UPVC resins which areas specifically tropicalised for India.

Team nuCON as channel partners with team Fenesta provides a 360° service with solution. We are involved right from the design stage & selection of options to the minutest details of installation which are taken care of by us as a team.

THE KEY FEATURES OF FENESTA WINDOWS

- Prevents invasion & 100% sealing of noise, dust & pollution.
- Prevents rattling due to wind.
- Get sunlight & natural light.
- Save energy, reduce air conditioning costs.
- Monsoon proof.
- Termite proof.
- Zero maintenance.

**GREEN WINDOWS FOR GREEN BUILDINGS
COME & EXPERIENCE - HOW WINDOWS CAN CHANGE YOUR HOMES**

HORMANN INDUSTRIAL DOORS

With Hormann India Pvt.Ltd. - team of experts based at Mumbai and the support system of [nuCON](#) as their channel partners - you can expect the best quality of product & service from us as a team.

Headquartered in Germany, Hormann is the leading manufacturer of doors and frames for industrial, commercial & residential use and loading bay solutions. Employing a 5,500-strong work force, Hormann generate a turnover in excess of € 1 billion (7,000 Crore Rupees) worldwide. In India, Hormann is the only provider of a complete portfolio of doors and accessories with a local subsidiary, expertise and technical back-up. This, together with the most comprehensive product range of doors and loading solutions world-wide, puts us in a unique position to support your projects.

INDUSTRIAL DOORS

- Rolling shutters
- High speed roll on doors
- Sectional doors
- Sliding doors

MULTIPURPOSE DOORS

- Residential/Entrance doors
- Biometric control
- Dock levelers & dock seals

SPECIALISED DOORS

- Acoustic doors
- Fire rated doors
- Hospital/Clean room doors



Rolling Shutters



Sectional Doors



High-speed Doors



Dock Levelers

ACCESS FLOORS



Techno Access Floor[™]

Techno make access floors TECHNO- ACCESS / RAISED ANTISTATIC FLOORINGS

Networking and data cabling require a large number of cables across offices. Immediate and easy access is paramount for quick maintenance. A server room in any BPO/IT facility is the place where all data cables and wires converge. Such areas require access floors offered by [nuCON](#). Similar requirements are of plant control rooms in process industries.

These panels are strong modular panels of size 600mmx600mm, made of 2 layers of steel, with the hollow core filled with cementitious material. The steel plates are spot welded at more than 50 points. The top layer has an antistatic decorative laminate, whereas the bottom is epoxy powder coated. The edges of the tiles are sealed with PVC edge beading. The tiles perfectly sit on a steel pipe structure which is fitted on an adjustable jack placed at every 600mm center to center. It is possible to have access floors from 150mm to 1200mm height depending upon customer requirements.

Create visually striking interiors with superior acoustic performance.

Acoustics play a crucial role in our day-to-day life. Whether you are designing an open-plan workplace, a meeting room or for that matter a cinema hall, acoustical performance has to be carefully taken into consideration. Furthermore, the solutions available in the market leave a lot to be desired, in terms of acoustic performance, aesthetics and ease of installation.

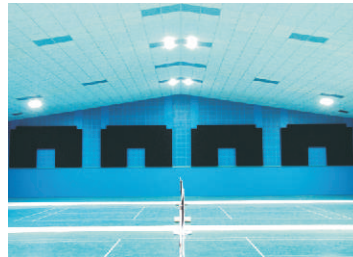
The Techno Acoustic™ Panel is a high performance and durable sound absorptive product. Installation of Techno Acoustic™ Panel is very convenient and can be easily installed.

COMPOSITION

Techno Acoustic™ Panel is made from short polyester fiber. It is prepared by needle punching on multi folded polyester fabric sheets (arranged by carding process). The final material consists of a three dimensional network structure with breathable open cells.

PHYSICAL PROPERTIES

- Thickness: 9 mm
- Dimension: 1200 mm X 2400 mm
- Density: 237 kg/m³ (Testing method: ASTM D 1752)
- Techno Acoustic™ Panel is lightweight and flexible along with excellent tension / compression stiffness.
- The tile maintains its dimensions in high humidity and temperature.
- The color of the tile maintained even in long term exposure to sunlight (over 4th grade in 240 hrs at 100°C).
- The surface of the tile is resistant to surface wetting (rate of resistance to surface wetting: 99.6%) therefore inhabitation of various germs and molds is inhibited.
- The panel can be easily cut into any desired shape.



PRE-FAB



These are modular structures made from steel structures, roof and walls made from reusable materials, such as sandwich panels which are made up of EPS (Expanded Poly Styrene) pre-coated steel. Sliding Windows made from aluminium/PVC, locations of these windows & doors are customizable according to the site requirements.

- Site Offices
- Labour Camps
- Temporary Accommodation
- Rest Houses
- Crèches
- Toilets
- Primary Health Centres
- Security Cabins



DESIGNED TO PROTECT YOU

The complete line of **3M™** Fire Protection products help prevent fire, smoke, toxic fumes and moisture from passing through penetrations in fire rated walls and floor. These easy to install products are suitable for a wide variety of firestop applications, including plastic pipes, metal pipes, HVAC duct work, cables, constructions gaps, grease ducts, all tops and control joints.

PASSIVE FIRE PROTECTION PRODUCTS

- **3M™** Fire Barrier Mortar
- **3M™** Fire Barrier Expantrol Flexible Intumescent Strip (E-FIS)
- **3M™** Fire Barrier Water Tight Silicone Sealants
- **3M™** Fire Barrier CS-195 + Composite Sheet
- **3M™** Fire Barrier Moldable Putty+
- **3M™** Fire Barrier 2001 Silicone RTV Foam

3M SAFETY AND SECURITY FILMS

Greatly reduces the likelihood that an object, person, glass shard penetrate through your window / glazing

- **Smash & Grab Crime**
- **Industrial Terrorist Explosion**
- **Terrorist Bomb blast attacks**

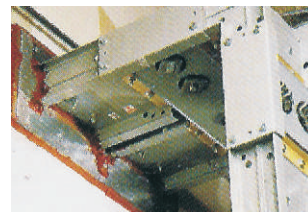
3M ENERGY MANAGEMENT FILMS

Provides solar heat rejection and associated energy saving payback

- **Rejects solar heat**
- **UV Protection**
- **Reduces glare**
- **Reduces air conditioning cost**

PRODUCTS

- **Night Vision Series**
- **Reflective Series**
- **Prestige Series**



PROJECTS



PARTNERING WITH



CLIENTS



AUTOMOBILE INDUSTRY

- Autocluster, Pimpri, Pune
- Bharat Forge Ltd., Pune
- Comau India Ltd., Pune
- Honda Showroom, Madgaon, Goa
- Kalyani Forge Ltd., Koregaon Bhima
- Mahindra & Mahindra Ltd., Nashik
- Mercedes Benz India Ltd., Chikhali, Pune
- Tata Motors Ltd., Pune, Dharwad, Singur, Sanand

BANKING INDUSTRY

- Bank of Maharashtra Old HO., Pune
- IDBI Bank HO., Pune
- Reserve Bank of India, Agricultural Banking, Pune

BUILDERS

- Sai Promoters & Builders
- B.G. Shirke Constructions Ltd., Pune
- Lunkad Developers, Pune
- Naik Navare Builders, Pune
- Pride Group, Pune
- Soham Builders, Mumbai
- Kolte Patil Developers
- Vascon Engineers

CONSUMER PRODUCTS

- Aquagel Pvt. Ltd., Bhuj, Gujrat
- BPL Mobile HO., Pune
- Daewoo Electricals, Ranjangaon
- Hindustan Lever Ltd., Daman
- Hindustan Lever Ltd., Baddi, Himachal Pradesh
- Hindustan Lever Ltd., Silvassa
- Hindustan Lever Ltd., Khangaon
- Loreal India Pvt. Ltd., Chakan, Pune
- Samsung Showroom, Pune
- Shoppers Stop, Secunderabad

CONSTRUCTION COMPANIES

- Shapoorji Pallonji & Co.
- Devi Construction Co.
- Ratilal Bhagwandas Construction Co.
- Millenium Construction Co.
- Bhat & Raje Construction Co.
- Panchshil Developers
- Gannon Dunkerley Construction Co.
- New Consolidated Construction Co.

EDUCATION SECTOR

- BAHAI Academy, Panchgani
- Balharathi, Pune
- Bharati Vidyapeeth, Pune
- C-DAC, Pune University, Pune
- College of Engineering, Pune
- TIFR, Pune
- Symbiosis IT college, Hinjewadi
- Indira Institute of Management

ELECTRICAL & ELECTRONICS INDUSTRIES

- Bajaj Electricals, Chakan, Pune
- Crompton Greaves Ltd., Nashik
- Goa Fiber Optical Ltd., Verna, Goa
- LGT (Switchgears) Ltd., Ahmednagar
- Philips India Pvt. Ltd., Loni / Bhosari, Pune
- Semco Electronics, Chakan, Pune
- Tata Johnson Control Ltd., Pune
- Universal Cables, Verna, Goa

FOOD & HOTEL INDUSTRY

- Coca Cola, Bidadi, Bangalore
- Coca Cola, Verna, Goa
- Domino's Pizza, Mumbai / Pune
- Hotel Hyatt Taragaon Regency, Kathmandu, Nepal
- Mc. Donalds, Pune
- Venkey's Food Division, Pune

GOVERNMENT DEPARTMENTS

- All India Radio, Pune
- Central Railway, Pune
- Garrison Road Engineering Force, Alandi, Pune
- M.E.S., Pune
- Central Public Western Division

HOSPITALS

- Dr. Bhalariao Hospital, Hadapsar, Pune
- Poona Hospital, Pune
- Pune Health Pvt. Ltd., Pune
- Sancheti Hospital, Pune
- Pratibha Hospital Pvt. Ltd., Satara
- Yashwantrao Chavan Hospital, Pune

INDUSTRIAL SECTOR

- Jindal Stainless, Orissa
- Alfa Laval Ltd., Pune
- Cummins India Ltd., Kothrud, Pune

- Garware Wall Ropes Ltd., Chinchwad, Pune
- Pennazoil India Ltd., Turbe, Mumbai
- Praj Industries, Pune
- Swarowski, Ranjangaon
- Sahyadri Agro, Baramati, Dist. Pune
- Saint Gobain Sekurit India Ltd., Bhosari
- Sandvik Asia Ltd., Dapodi
- Thermax India Ltd., Chinchwad, Pune
- Western India Ship yards Ltd., Goo
- INA Bearings - Talegaon.

INFORMATION TECHNOLOGY

- Cognizant Technologies, Pune
- Finolex Technologies, Urse, Pune
- Giga Space IT Park, Pune
- I-Soft Labs, Pune
- KPIT, Hinjewadi, Pune
- Tech Mahindra, Pune
- Zensar Technologies, Kharadi, Pune

PHARMA INDUSTRIES

- Associated Capsules Ltd., Shirval
- Orchid Pharma
- B. Braun Pharma, Ponda, Goa
- Cipla Ltd., Kurkumbh, Dist. Pune
- DCI Pharmaceuticals Ltd., Goo
- Emcure Pharmaceuticals Ltd., Hinjewadi, Pune
- Fresinus Kabi, Ranjangaon
- Hindustan Antibiotics Ltd., Pune
- Okasa Pharma, Satara
- Universal Capsules Ltd., Dahanu
- Serum Institute of India Ltd.

SOFTWARE INDUSTRY

- Geometric Software Solutions Ltd., Hinjewadi, Pune
- IBM, Hadapsar, Pune
- IMC Software, Pune
- Kale Consultants Pvt. Ltd., Pune
- MCS Software, Pune
- Neilsoft, Pune
- Scicom Software, Bavdhan, Pune
- Websym Technologies, Hinjewadi, Pune.
- Websym Software, Hinjewadi, Pune
- TATA Technologies India Ltd.
- Persistant Systems Ltd.



nuCON's MISSION

- To impart completely integrated solutions
- To introduce technologically advanced innovative products and concepts.



Turnkey Interior Solutions
(Commercial & Industrial)

Head Office

771. 4, Mayur Apartments, Off Bhandarkar Road,
Behind Spencer's Daily, Pune 411 004.

Ph: + 91 20 2567 2590 - 91 Fax : + 91 20 2567 0838

Email : nucon@pn2.vsnl.net.in

Branch Office

Nasik

3 Manorama Saha Nivas,

Near Rajasarathi Society, Indira Nagar, Nasik 422 029.

Ph: +91 253 - 2397 411 Mobile: +91 94227 70913

Email: nucon_nasik@bsnl.in

Contact

Ahmedabad	- Ajit Phatak	- 97263 03805
Bangalore	- Amar Shetty	- 98453 58625
Goa	- Manohar Kamat	- 93705 08990
Kolhapur	- Arun Sanghvi	- 94225 26096
Mumbai	- Mohandas Hegde	- 98200 81674
	- Paras Dalal	- 93243 19679
Nagpur	- Sharad Phadnis	- 99708 82351
Nasik	- Abhishek Patil	- 94227 70913

NUCON DOORS, PUNE

WUDPOINT Inc, PUNE

CHANAKYA TECHNOLOGIES INDIA (P) LTD., MUMBAI

YASH INTERIORS, MUMBAI

SIMCA ALUMINIUM PVT. LTD., GOA

www.nuconproducts.com