



U.S. ARMY DUGWAY PROVING GROUND

Mission & Capabilities Overview

September 2017

Agenda and Purpose

- Mission and Vision
- Organization
- Quality of Life
- Location
- Test Center Capabilities
- Recent & Future Activities
- Discussion and Questions

Purpose: Provide an overview of Dugway Proving Ground's mission and capabilities.

DPG Mission

U.S. Army Dugway Proving Ground executes efficient testing and support to enable our nation's defenders to counter chemical, biological, radiological, and explosives (CBRE) hazards.

DPG Vision

Dugway Proving Ground provides unparalleled testing, evaluation, training, and technical support to the Department of Defense, inter-agency partners, and our Allies while maintaining a world-class workforce, facilities, and quality of life for our employees and their Families.

BLUF: Test Tube to Battlefield

Dugway Proving Ground is the nation's designated Major Range and Test Facility Base for Chemical and Biological Defense (C/B) Testing and Countering Weapons of Mass Destruction (CWMD) Support



Chem Testing

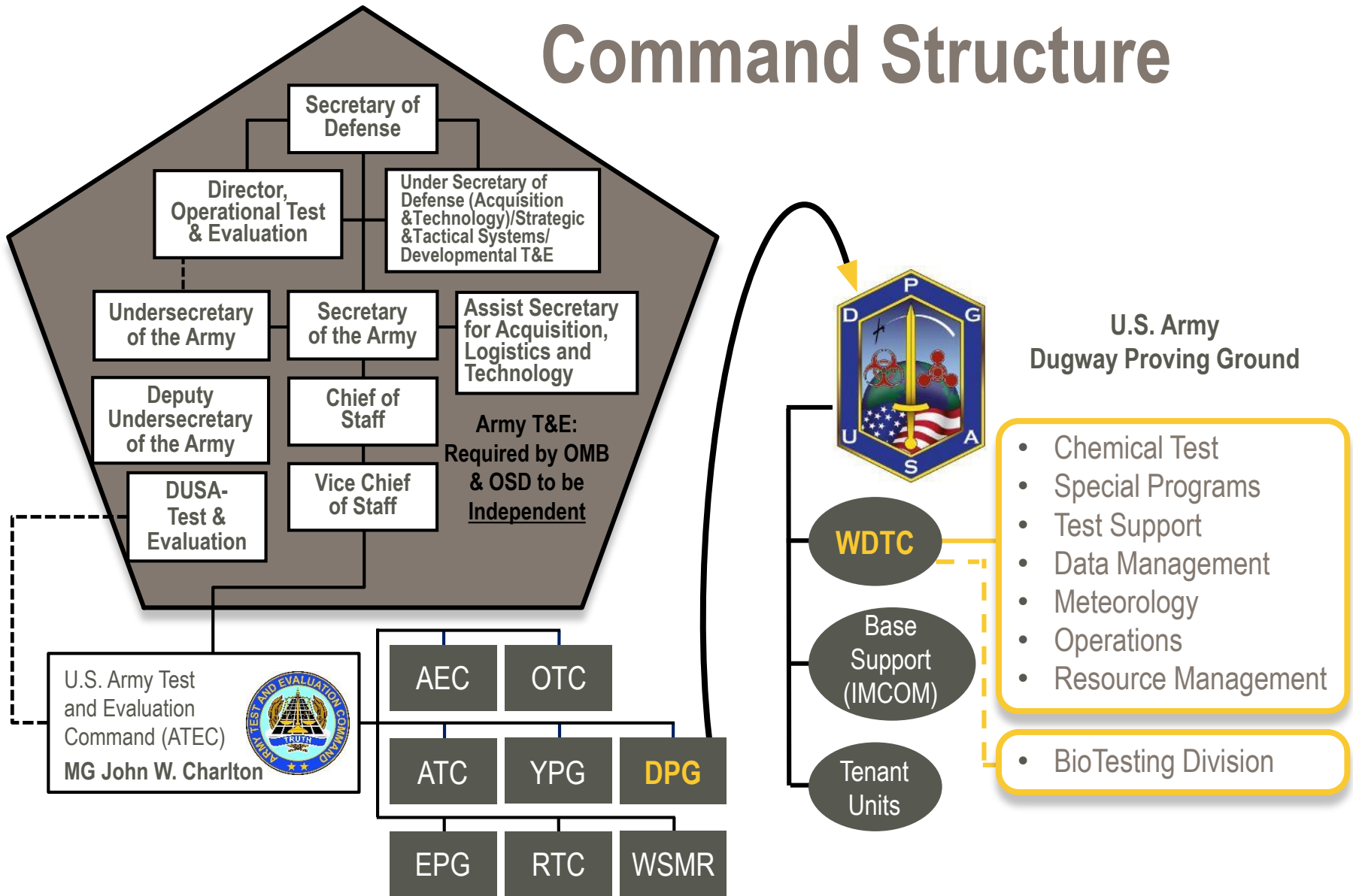


Bio Testing



**CWMD
Support**

Command Structure

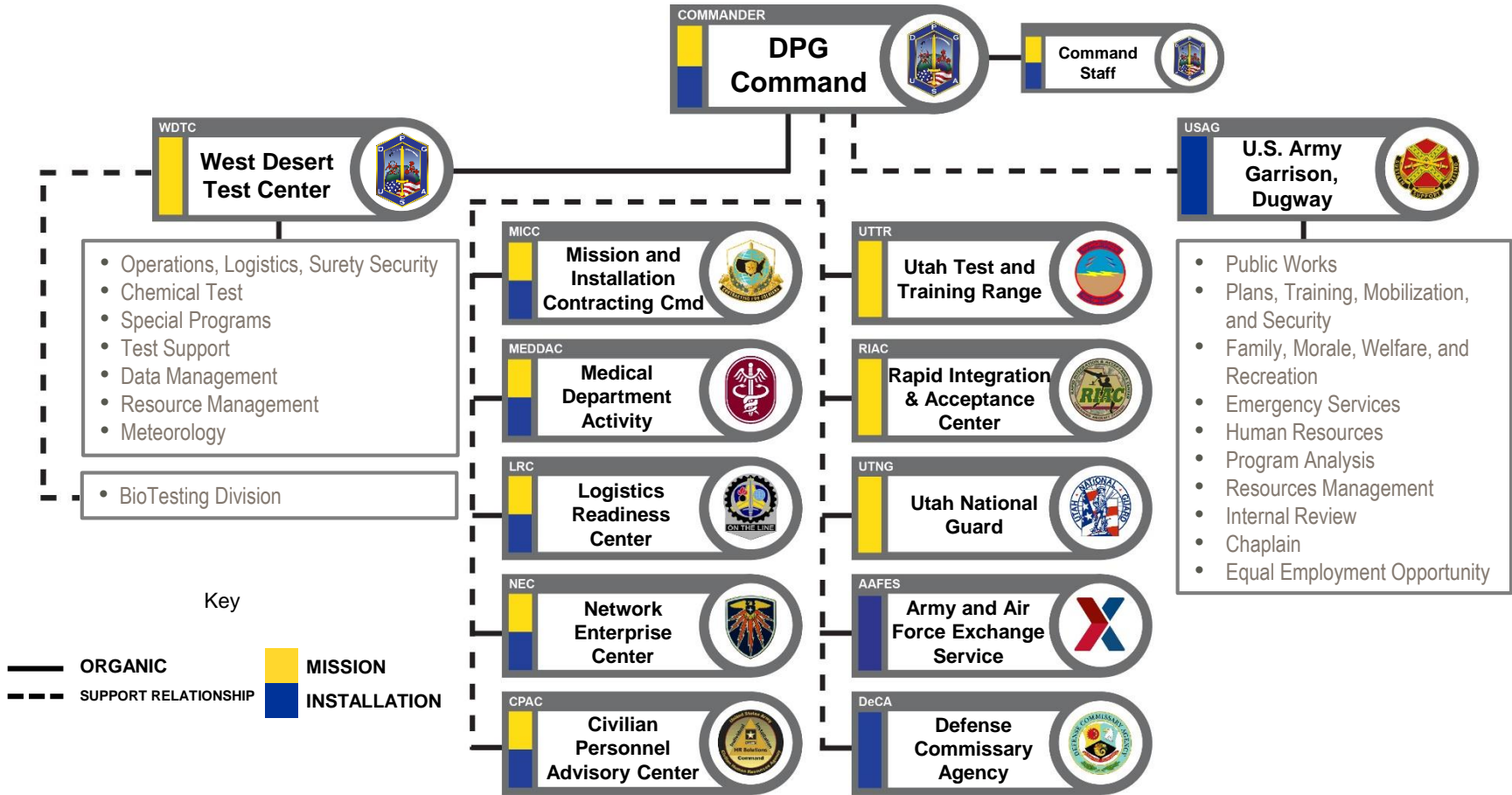


AEC – Army Evaluation Center
 OTC – Operational Test Command
 ATC – Aberdeen Test Center
 YPG – Yuma Proving Ground

EPG – Electronic Proving Ground
 RTC – Redstone Test Center
 WSMR – White Sands Missile Range
 WDTC – West Desert Test Center

OMB – Office of Management and Budget
 OSD – Office of the Secretary of Defense
 IMCOM – Installation Management Command

Dugway Proving Ground Organization



Team Dugway – working together to execute the mission and care for people

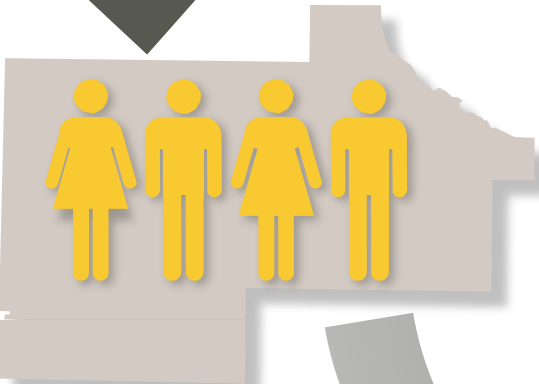
Workforce & Direct Economic Impact

Total Military/DA Civilians	486
<small>ATEC, IMCOM, Appropriated Funds, Non-appropriated Funds</small>	
DoD Tenants	622
<small>MICC, MEDCOM, NEC, RIAC, UTTR, TMDE, BTB, CPAC, LRC</small>	
Other Tenants	784
<small>Army/AF Contractors, AAFES, IHG, USPS, Schools, CU</small>	
DPG Residents	228
<small>Spouses and Dependents only</small>	
Total Employees and Residents	2120
Transients/Customers	50-1500
<small>Military/Civilian combined on any given test day</small>	

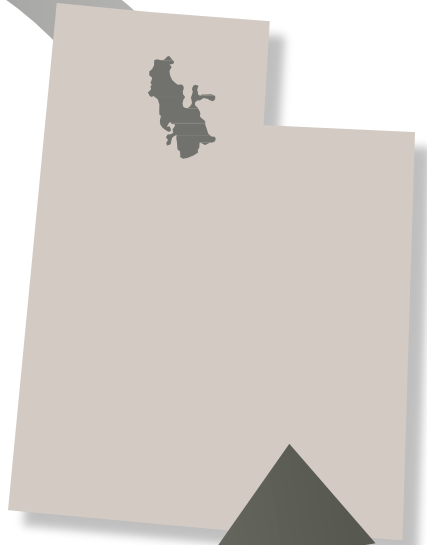
Dugway Proving Ground supported nearly 2,500 jobs and \$225 M in GDP for Utah

Category	Total
Jobs	2,479
Earnings (M)	\$175.9
Gross Domestic Product (M)	\$225.0

Source: Kem C. Gardner Policy Institute analysis using the REMI PI+ model



ATEC – Army Test & Evaluation Command
IMCOM – Installation Management Command
MICC – Mission & Installation Contracting Cmd
MEDCOM – Medical Command
NEC – Network Enterprise Center
RIAC – Reception Integration Acceptance Ctr.
UTTR – Utah Test and Training Range
TMDE – Test, Measurement & Diagnostic Equip.
BTD – BioTesting Division
CPAC – Civilian Personnel Advisory Center
LRC – Logistics Readiness Center



AAFES – Army/Air Force Exchange Service
IHG – InterContinental Hotels Group
USPS – U.S. Postal Service
CU – Credit Union

Installation – English Village



- On-Post Housing for Families and Individuals
- Visitor Lodging at Desert Lodge
- Occupational Health Clinic
- Commissary, Gas Station and Shoppette
- School: Elementary - High School (K-12)
- Comprehensive Family and MWR Programs
 - Army Community Service (ACS)
 - Business and Recreation
 - Child and Youth Services (CYS)



Installation – Army Community Service & Child and Youth Services



- Diverse array of family services
- Life skills classes
- Financial readiness
- Employment readiness
- SARC/SHARP



UNITED STATES ARMY
CHILD & YOUTH SERVICES

- Quality child care for all ages
- Child Development Center
- School Age and Youth Center
- School Liaison Officer



Installation – Recreation & More

- Fitness Center
- Sports and fitness programs
- Outdoor swimming pool
- Community Club & Ditto Diner
- Library
- Sportsman's Complex
- Skeet Range
- Rock and Wood Shop
- Auto Craft Shop
- Outdoor Recreation
- RV Park and RV Storage Lot
- Leisure Travel
- Antelope Inn
- Community Special Events



Location & Airspace

Freedom to Test and Train



Dugway is Remote:

- Free from urban encroachment
- Acoustically & electronically quiet
- Salt flats extending 90 miles north
- Light pollution-free
- Surrounded on three sides by mountains and desert terrain



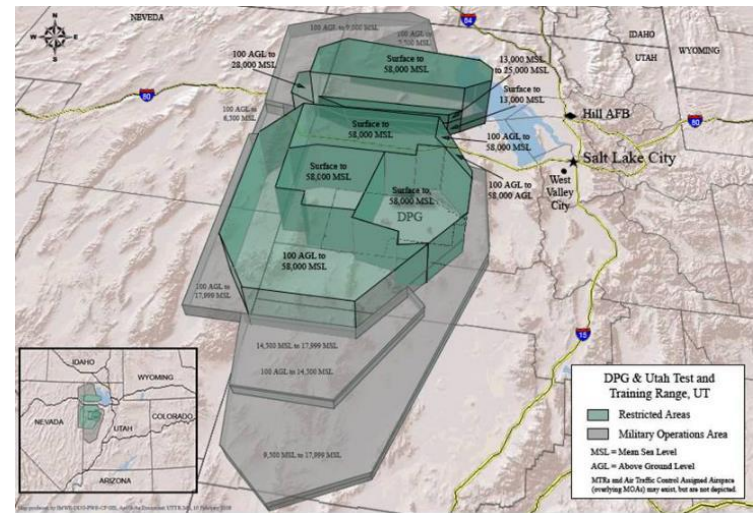
Dugway is Accessible:

- 78 miles from Salt Lake International Airport (I-80)
- 38 miles from Tooele
- 82 miles from Provo



Total Area	1,252 miles ²
Mountain Terrain	59,078 acres
Mixed Desert Terrain	279,768 acres
Playa (flats)	462,180 acres

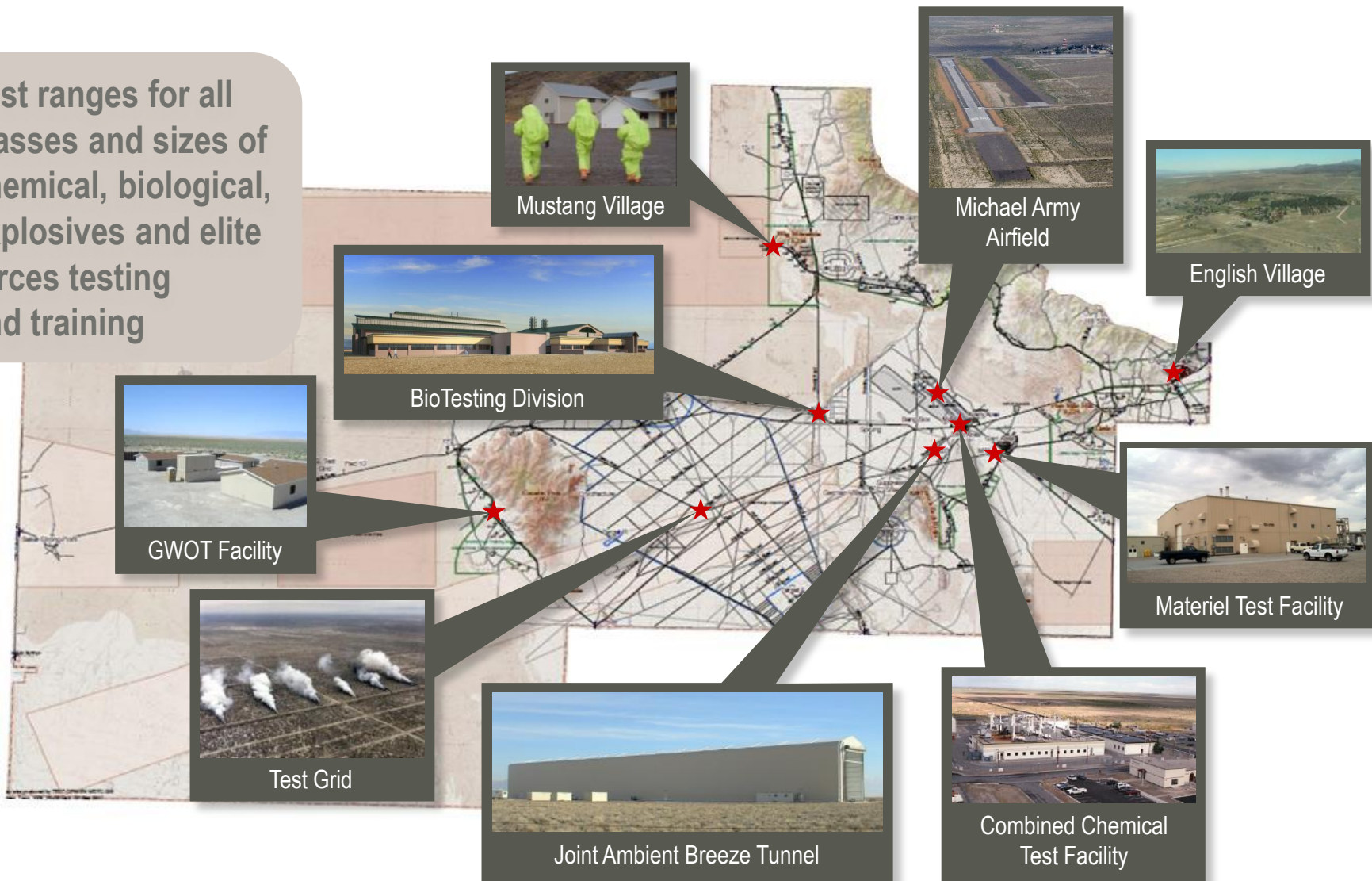
DPG is partnered with Utah Test & Training Range



Total Airspace Footprint	16,797 miles ²
Restricted Airspace	7,954 miles ²
Military Operations Area	10,004 miles ²
DOD Exclusive-use Land	3,078 miles ²
Government-owned Land	16,686 miles ²

Capability Map

Test ranges for all classes and sizes of chemical, biological, explosives and elite forces testing and training



Michael Army Airfield (MAAF)

Fully lighted 11,000-ft runway
capable of handling any aircraft in
DOD inventory

- Emergency landing site for distressed aircraft
- Aircraft decon pad
- 20,000 ft² hangar
- New 5,600 ft² hangar
- 495,000 ft² apron space

Operational Use:

- Unmanned Aircraft Systems testing
- Shipment of surety materials
- C/B decontamination of aircraft
- Tactical air operations
- Air re-supply and logistics
- USAF emergency airfield
- Contingency Power Projection Platform for Tooele Army Depot (TEAD)



Unmanned Aircraft Systems (UAS)

Onsite airfield facilitates UAS testing programs

- Rapid Integration and Acceptance Center for PM-UAS
 - Hunter
 - Shadow
 - Warrior
 - Gray Eagle
- Adjustable IR, Laser and EO targets
- High-speed optical data imaging
- Cloud characterization for C/B disseminations
- Hellfire range support
- Fabrication shops



PM-UAS – Program Manager Unmanned Aircraft System
IR – Infrared
EO – Electro-optical

CWMD Non-Materiel Evaluation and Support

Providing expertise and locations to evaluate procedures and equipment in realistic operational environments that is informed by test expertise

- Evaluate equipment effectiveness in new operational scenarios with similar rigor to materiel testing
- Support addressing the full range of countering WMD tasks and requirements – from prevent use or proliferation through managing the consequences of employment
- Deliver graduate level, hands-on training with real agents and simulants in threat-representative scenarios
 - Focus on chemical and biological detection, signature recognition and sampling
 - Enhance readiness to respond to domestic chemical or biological terrorist attack
- Provide realistic, practical exercises to test tactical skills in the detection, forensic sampling, and packaging of chemical/biological agents



Recent Accomplishments

Jackrabbit - Large-scale outdoor Toxic Industrial Chemical releases (10 to 20 tons)

- Capstone event of a multi-year effort (DTRA, DHS)
- Multiple government, academic & international participants
- Meteorological forecasting and modeling of conditions and dispersion characteristics prior to and during test events



- SK Challenge Field-test Week
- New Solar Field – 2 MW
- CALDERA and Iron Warrior
- Desert Ice Multinational C/B Event
- Air Force WSEP

SK – Sophos Kydoimos
DTRA – Defense Threat Reduction Agency
DHS – Department of Homeland Security
CALDERA – Crater Algorithm Designed for Explosive
chaRge Analysis
WSEP – Weapon System Evaluation Program

The Near Future

Test Capabilities Improvements

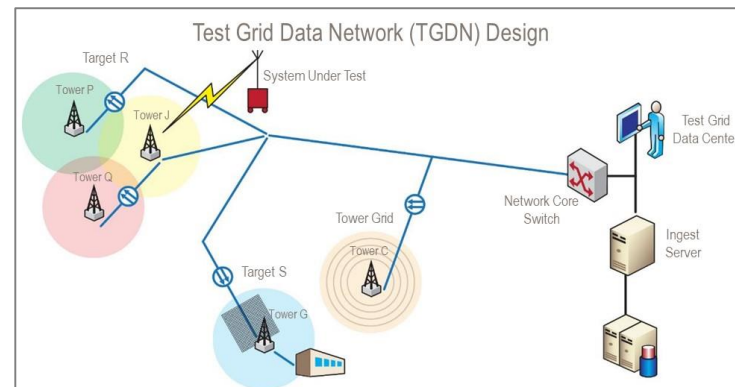
- Nontraditional Agents (NTAs)
- Modular test capabilities
- Replacement of air-handling for chemical laboratories

Infrastructure Improvements

- Wireless Test Grid
- Additional 2 MW Solar Field

Test and Training Events

- SK Challenge IV Field-test Week
- Desert Ice Multinational CB Event



Discussion and Questions



Supporting the Soldier



Vast remote areas for testing and training



Expert, Army Acquisition-certified work force



Infrastructure in place with state-of-the-art equipment



Environmental permits



On-site airfield



Quality of life



Positioned for future growth



Supporting DOD transformation



DPG – Viable today and preparing for tomorrow

TEAM DUGWAY – Empowering the Nation’s Defenders

COL Brant D. Hoskins
Commander, Dugway Proving Ground
5450 Doolittle Ave
Dugway Proving Ground, UT 84022

CSM Joe A. Bonds
Installation Command Sergeant Major
5450 Doolittle Ave
Dugway Proving Ground, UT 84022

**Dugway Proving Ground Public Affairs Office E-mail:
usarmy.dpg.atec.mbx.pao@mail.mil**

**Dugway Proving Ground Website:
www.dugway.army.mil/**

**Dugway Proving Ground (Official) Facebook page:
www.facebook.com/USArmyDPG**

Back Up

Major Range and Test Facility Base (MRTFB)

“The DA MRTFB is an aggregation of T&E activities...designed to provide support capabilities based on DOD component requirements without unnecessary duplication. DA MRTFB activities are available to all users with valid hardware testing and test support requirements.”

-Army Reg. 70-69, 1-6, a

“Capabilities....shall not be unnecessarily duplicated.”

-DoDD 3200.11

Public Law 103-160, 30 Nov. 93: Directed consolidation of all CBDP funding; DPG MRTFB operating costs became responsibility of CBDP. Sec. Def. designated Army as Executive Agent to coordinate and integrate chemical/biological defense RDT&E

DoD MRTFB Locations



DPG is the Nation's designated MRTFB for Chemical and Biological Defense Testing and Training