



MISSOURI CHESS ASSOCIATION

MISSOURI CHESS BULLETIN

WWW.MOCHESS.ORG

Marler's the Man



Alex Marler wins MO Amateur Championship

**While GM Finegold grabs his first Missouri
State Title in the Invitational Section**



Volume 37 Number Four—Fall 2010 Issue
Serving Missouri Chess Since 1973



TABLE OF CONTENTS

Missouri Chess Bulletin

~Volume 37 Number 4 - Fall 2010~

Submission Deadline for
the next issue of the MCB:
January 5th, 2011

From the Editor	Pg 3
Tournament Winners	Pg 4
Recent News in Missouri Chess	Pg 5
Top Missouri Chess Players	Pg 6
Press Release: US Championships Return in 2011	Pg 7
Invitational Championship	Pg 8-10
~ Bob Howe	
Book Review: The Chess Handbook for Parents and Coaches	Pg 11
~Ron Munstermann	
Hua Shines at World Youth	Pg 12-13
Endgame Studies	Pg 14-15
~ Selden Trimble	
Tactics Simplified	Pg 16
~ Ron Luther	
Chess Clubs around the State	Pg 17
Scholastic Schedule	Pg 18
Upcoming Tournaments	Pg 19
Featured Game	Pg 20-21
~ James Smith	
Junior Gran Prix	Pg 22
Recent Games	Pg 23-26
State Champions	Pg 27
Missouri Chess Hall of Fame	Back Cover



The Missouri Chess Bulletin is the official publication of the Missouri Chess Association, a not-for-profit organization which promotes and supports chess in Missouri. The Missouri Chess Bulletin was founded in 1973 and is published quarterly. Your letters and writings are welcome. All submissions become the property of the MCA and the MCA reserves the right to edit any and all material received. Published opinions are those of contributors and do not necessarily reflect the views of the MCA

From The Editor *Bob Howe*



Greetings Missouri Chess Players.

A busy fall season of chess has wound down, and the calendar thins out a little for the next few months, but I expect 2011 to be another banner year for Chess in Missouri. 2010 has been an amazing year for our state. We started the year with the addition of our first GM, Ben Finegold joined the staff of the Chess Club and Scholastic Center. Then we had the surprise addition of the country's best chess player, GM Hikaru Nakamura move to St. Louis as well. The always great Saint Louis Open reached even higher heights with over 130 players and a small horde of titled players participating. The US Chess Championships, Women's Championships, and Junior Championships saw one after another prestigious event take place in the Show Me State. The Continental Chess Association, the nation's biggest "big tournament" organization continued to schedule it's Mid-America Open in the our backyard. The Missouri Invitational added a new feature, the Missouri Amateur Championship, and the new event was a big hit. Then finally the Chess Club and Scholastic Center is holding another big money event, The Thanksgiving Open, which is expecting to be another huge event for the area. Its hard to believe so much is happening!

So what can we expect for 2011? The same and more appears to be on the plate. The CCSCSL has announced that they are again hosting the US Championships (see press release on page 7). All the big tournaments mentioned above are being planned for again this year, with improvements planned for some of them as well. It's a great time to be a chess lover in Missouri!

If there is any downside to the great things going on in the St. Louis area, its that they haven't spread very far beyond. The rest of the state continues to have some big gaps in the calendar for players looking for over the board competition. There continues to be some activity in the Columbia and Kansas City area, but there is clearly more demand for tournaments out there than organizers willing to run them. Organizing tournaments can be a lot of work for little thanks, but I hope we'll see some new people step up in 2011.

Finally, I must wrap up by apologizing to those who have been anxiously awaiting the new MCB. (Are there people anxiously awaiting the MCB??? Lets assume there is..) This issue is running quite late, as a combination of procrastination and outside factors kept me from getting it done in a timely matter. Work on the next edition has already begun, with stories on the Thanksgiving Open, the Nigel Short appearance, and pre-views of next year's events underway. The winter edition should be out in January, and the state magazine will be back on track.

End of Year Bash - December 18th

4SS,G/75. Location: Chess Club & Scholastic Center,
4657 Maryland Ave, St. Louis MO 63108

- ♔ 4 Round Swiss, Game in 75 minutes (G/75)
- ♔ Three Sections: Open, U1700, and U1300
- ♔ Prizes: Open \$300 1st \$100 2nd U1700 \$225 1st \$75 2nd U1300 \$200 1st \$50 2nd
- ♔ Entry Fee: \$30, \$25 for annual club members if registered by 12/16
- ♔ Registration: 9-9:45am. Rounds: 10am, 12:45, 3:30, 6:15
- ♔ MCA membership required for MO residents

Advance entries/info:

4657 Maryland Ave., Saint Louis, MO 63108, or online at saintlouischessclub.org
314-361-CHESS or email: info@saintlouischessclub.org

Recent News in Missouri Chess

A hearty congratulations to **Mr. Selden Trimble** for his induction into the **Missouri Chess Association Hall of Fame**. He was officially inducted during a presentation at the Missouri Open and Chess Festival in Columbia this September. Those in attendance were immediately treated to why this gentleman deserved the honor after hearing his gracious acceptance speech. Trimble gave a passionate argument calling for those who have loved the game and received so much enjoyment from it over the years, to remember to give back to it. He spoke of how particularly as one grows older and their own family obligations lessen, then that it is the right time to share your experience with young players.

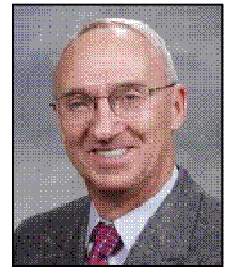


2010 Hall of Fame Inductee:
Selden Trimble



Organizer of the Year
Tony Rich

For the second year in a row, the Big Cheese at the Chess Club and Scholastic Center have been nationally recognized at the USCF annual awards banquet. For the second year in a row, **Tony Rich** was named **Organizer of the Year** for his work with the US Chess Championships. Meanwhile, **Rex Sinquefield** again received the **Koltanowski Award** from the USCF. Congratulations to those gentlemen, and thanks for all your work for chess in Missouri.



Koltanowski Award
Rex Sinquefield

The Missouri Chess Association's **Player of the Year** program wrapped up at the Missouri Open in September. **William Nesham** of St. Peter's Missouri took the top honor. William combined strong results, (his rating has climbed 150 points in the last year) with heavy activity, to easily seize the prize. William earned a nice plaque and a spot in the 2011 Invitational State Championship tournament for his effort. Final standings and how points are earned can be found below.



MCA Player of the Year
William Nesham

Photo by Laura Smith

MCA Player of the Year Final Standings

1. William Nesham	63.5
2. Jialin Ding	50
3. William Thompson	50
4. Ken West	49.5
5. Kevin Johnson	48.5
6. Joseph Garnier	48
7. Vishal Bharadwaj	47
8. Joshua Frank	45.5
9. William Tong	45
10. Alex Vergilesov	45

The MCA Player of the year points are awarded at any tournament that requires MCA membership. Points are earned as follows: 2 points for each tournament attended, 1 pt for each win, .5 pts for each draw.

MISSOURIANS ON THE USCF TOP 100 LISTS — October 2010

<u>Overall</u>	GM Ben Finegold (2597) 17th IM Michael Brooks (2408) 99th	<u>Age 13</u>	Kevin Cao (2219) 6th Jialin Ding (2088) 17th William Tong (1974) 25th Ansar Lemon (1843) 56th
<u>Age 18</u>	Steven Rand (1936) 69th Alex Esposito (1857) 79th Brad Schlosser (1836) 83rd	<u>Age 12</u>	Margaret M. Hua (1845) 51st
<u>Age 17</u>	Henry Cao (1865) 87th	<u>Age 9</u>	Jason Zhou (1465) 50th
<u>Age 15</u>	Isaiah Gadson (1958) 46th James L. Smith (1895) 62nd	<u>Age Under 8</u>	Jason Ding (1181) 27th
<u>Age 14</u>	Vikram Arun (1859) 69th William Nesham (1794) 91st	<u>Girls U13</u>	Margaret M. Hua (1849) 6th Keturah Gadson (1405) 53rd Zoe Lemon (1347) 68th
<u>Correspondence:</u>	Harry Ingersol (2330) 25th Barry Walker (2214) 55th	<u>Senior</u>	Robert Jacobs (2100) 51st

MISSOURI'S TOP 100

1 GM Benjamin Finegold 2597	36 Frank Smith 1969	71 Margaret Hua 1829
2 IM Michael Brooks 2408	37 Shan Siddiqi 1969	72 Thomas Rehmeier 1826
3 Kenneth Jones 2225	38 Daniel Huff 1965	73 Daniel Coryea 1813
4 Richard Benjamin 2204	39 Mark Young 1963	74 Stephen Landrum 1807
5 FM Robert Sulman 2200	40 Isaiah Gadson 1959	75 Paul Goddard 1806
6 Ronald Luther 2200	41 Alex Marler 1951	76 Timothy Nesham 1806
7 Bob Holliman 2200	42 Tamas Mizik 1945	77 Ray Kurczynski 1802
8 Kevin Cao 2195	43 Daniel Roberts 1940	78 Marcus Scott 1800
9 Mark Bohannon 2155	44 Steven Rand 1936	79 Randy Giminez 1800
10 James Voelker 2145	45 Tony Rich 1934	80 Edil Karabiev 1792
11 Nathaniel Fast 2129	46 John Boyer 1931	81 Matthew Barrett 1783
12 Mark Ferber 2129	47 Zebedee Fortman, Jr. 1929	82 Chris Fieber 1781
13 Bronik Matwijkiw 2113	48 Kenneth Fee 1922	83 Jacob Wilkins 1777
14 Jialin Ding 2110	49 Steven Bange 1918	84 Wayne Stallman 1769
15 Abhishek Mallela 2109	50 Vikram Arun 1917	85 Roger Smith 1766
16 James McLaughlin 2102	51 Dwight Beasley 1916	86 Joel Stebbins 1755
17 Barry Manthe 2102	52 Anthony Cirillo 1916	87 Behrooz Vakil 1753
18 Robert Jacobs 2100	53 Albert Howlett 1912	88 Joe Piotrowski 1746
19 Zachary Druckerman 2054	54 James L Smith 1912	89 William Thompson 1744
20 Waldo Odak 2047	55 Darius Masuhud 1902	90 Anthony Ford 1740
21 Nick Karlow 2045	56 Adil Skuka 1900	91 Brad Herbst 1732
22 Scott Moore 2029	57 Frank Whitsell 1894	92 Allen Bishop 1731
23 Kenneth Thomas 2024	58 Alexander Vergilesov 1891	93 Mike Clark 1728
24 Joshua Frank 2023	59 Tony Dutiel 1884	94 Greg Clark 1727
25 Suman Kalavagunta 2013	60 Renzo Herrera 1866	95 William Starnes 1724
26 Benjamin Gradsy 2012	61 Henry Cao 1865	96 Spencer Conklin 1713
27 Joseph Garnier 2012	62 William Nesham 1863	97 Bob Howe 1710
28 James Davies 2000	63 Daniel Juengel 1859	98 Smajlagic Senad 1710
29 Kevin Dale Johnson 2000	64 Raymond Birt 1845	99 Matthew Angeli 1705
30 Spencer Finegold 1983	65 David Askin 1842	100 William Collin 1704
31 Selden Trimble 1983	66 Victor Marshall 1839	
32 Nathan Swinger 1979	67 Ansar Lemon 1838	
33 William Tong 1977	68 Brad Schlosser 1836	
34 Pranav Akolkar 1972	69 Alex Esposito 1835	
35 David Melita 1970	70 Kenneth Gurley 1831	

USCF October Supplement
Includes players active in the
past 12 months.

United States Chess Championships Return in 2011

ST. LOUIS, October 13, 2010 – The Chess Club and Scholastic Center of Saint Louis (CCSCSL) has been selected to host the U.S. Championship and the U.S. Women’s Championship for the third year in a row. These two prestigious events will be held concurrently in Spring 2011 and will feature the largest per capita prize funds in history.

A prize fund of at least \$170,000 is guaranteed for the 2011 U.S. Championship, and \$60,000 for the 2011 U.S. Women’s Championship.

This year, the field in each tournament will be reduced, further heightening the top-notch level of play each of these events has showcased in the two previous years. The 2011 U.S. Championship will feature 16 competitors, and the 2011 U.S. Women’s Championship will see eight players competing for the title. All players will be hosted at the historic and luxurious Chase Hotel, a short walk from the Chess Club.

The U.S. Championship will be split into two round-robin fields of eight players, with the top two players from each round robin advancing to a four-player knockout finale. The U.S. Women’s Championship will see eight players facing off in a preliminary round robin, with the top four players also advancing to a four-player knockout finale. Look for further details to come.

Tony Rich, executive director of the CCSCSL, said the 2011 event will, once again, raise the bar for U.S. Championship chess. “We are thrilled to once again host these two prestigious tournaments, and as always, we are working hard to make these events more exciting than ever,” Rich said.

Although four spots are still currently categorized as “wildcards” in the 2011 U.S. Championship, the Chess Club and Scholastic Center of Saint Louis is strongly considering using two of those spots for a Wildcard Qualifier Event, to be held at the CCSCSL about two months prior to the Championship. Details to be announced soon.

The breakdown of the 16 invitations for the 2011 U.S. Championship is as follows:

- (1) The 2010 U.S. Champion
- (1) The 2010 U.S. Women’s Champion
- (1) The 2010 U.S. Junior Closed Champion
- (1) The 2010 U.S. Senior Open Champion
- (1) The 2010 U.S. Open Champion
- (7) The top seven U.S. players by rating (by the January rating supplement)
- (4) Four wildcards



The breakdown of the eight invitations for the 2011 U.S. Women’s Championship is as follows:

- (1) The 2010 U.S. Women’s Champion
- (6) The top six female U.S. players by rating (by the January rating supplement)
- (1) One wildcard spot

Both of these tournaments will feature live grandmaster commentary and analysis, and the streaming video of the commentary will be broadcast at www.uschesschamps.com.

Stay tuned for more exciting developments!

Missouri Invitational Championship

Grandmaster Ben Finegold took his first, of what could eventually be many, Missouri State title when he beat out a tough field in the Missouri Invitational Championship. The event featured a collection of Masters, including Finegold, defending champion IM Micheal Brooks, and former State Champions such as Ron Luther, Jim Voelker, and Jim McLaughlin. Joining that group were a collection of strong players, who had won tournaments across the state, to round out the field.



Grandmaster Ben Finegold, the favorite for the event, was able to get off to a running start. Victories in the first two rounds put him in good shape early on.. He dispatched Kevin Johnson in the first round with a devastating attack that seemed to material out of nowhere. Then, in round two, he was able to beat the always dangerous Kevin Cao in a Caro Kann Defense.

Sicilian Dragon
 Missouri Invitational Championship
 W: Kevin Cao (2177)
 B: GM Ben Finegold (2592)

1.e4 c6 2.d4 d5 3.exd5 cxd5
 4.Nf3 Nf6 5.Bd3 Nc6 6.0-0
 Bg4 7.c3 e6 8.Bf4 Bd6
 9.Bxd6 Qxd6 10.Nbd2 0-0
 11.Qb3 Rab8 12.Rae1 b5 13.Ne5 b4 14.Qc2 Rfc8 15.Nxc6
 Qxc6 16.Rb1 g6 17.Rfc1 Bf5 18.f3 Qd6 19.Nb3 Nh5
 20.Qd2 bxc3 21.Rxc3 Bxd3 22.Qxd3 Rxc3 23.bxc3 Qa3
 24.Qd2 a5 25.g4 Nf6 26.Qf4 Nd7 27.Re1 Rc8 28.Re2 a4
 29.Nd2 Qxc3 30.Kf2 Qd3 31.h4 Rc2 32.h5 Rxa2 33.h6 a3
 34.Ke1 Ra1+ 35.Kf2 Ra2 36.Ke1 Ra1+ 37.Kf2 Rd1
 38.Qc7 Rxd2 0-1



GM Benjamin Finegold.
 2010 Missouri Invitational State Champion

Meanwhile IM Mike Brooks was able to keep pace with Finegold by winning the first two rounds as well. Brooks played strong chess all weekend as seen in this win over Jim Voelker.

Sicilian Dragon
 Missouri Invitational Championship
 W: IM Micheal Brooks (2411)
 B: Jim Voelker (2151)

1.e4 e5 2.Nf3 Nc6 3.Bb5 a6 4.Bxc6 dxc6 5.0-0 f6 6.d4 exd4 7.Nxd4 c5
 8.Ne2 Qxd1 9.Rxd1 Bd6 10.Bf4 Bxf4 11.Nxf4 Ne7 12.Nc3 Bd7 13.Ncd5
 Nxd5 14.Rxd5 b6 15.Rad1 Bc6 16.R5d2 Kf7 17.Rd7+ Bxd7 18.Rxd7+
 Ke8 19.Rxg7 Rd8 20.Nd5 Rd6 21.Rxc7 Kd8 22.Rb7 Re8 23.f3 b5 24.Rf7
 Ree6 25.Kf2 h6 26.g4 Re5 27.Rf8+ Kd7 28.f4 Rxd5 29.exd5 Rxd5 30.Ke3 h5 31.h3 hxg4 32.hxg4 Ke7
 33.Ra8 Rd6 34.Ra7+ Ke6 35.f5+ Kd5 36.b3 c4 37.b4 Ke5 38.Re7+ Kd5 39.Kf4 Kd4 40.Re3 a5 41.a3
 axb4 42.axb4 Ra6 43.c3+ Kd5 44.g5 fxg5+ 45.Kxg5 Ra8 46.f6 Rf8
 47.Kg6 1-0



IM Brooks was denied his record 13th State Championship by the newly minted Master Kevin Cao.

The two top seeds met up, each undefeated in the third round, but the anticipated match fizzled out into a quick draw. The players decided to shake hands early and take their chances the next day. The strategy would pay off for Finegold, as Brooks met up with Kevin Cao in round four. Although he seemed in control most of the game, a slip in the end-game was met with instant doom as Cao seized his opportunity, and the point. This opened the door for GM Finegold to take clear first. Which he did by winning out on Sunday, giving him 4.5/5. Brooks would end up in third with 3.5. Kevin Cao would finish clear second by winning

every game he wasn't facing a GM, including this nice win against Selden Trimble.

Sicilian Dragon

Missouri Invitational Championship

W: Selden Trimble (2177)

B: Kevin Cao (1936)

1.d4 d5 2.c4 e6 3.Nc3 Nf6 4.Bg5 Nbd7 5.e3 c6 6.cxd5 exd5 7.Nf3 Be7
 8.Qc2 0-0 9.Bd3 Re8 10.Rb1 Nf8 11.0-0 Ne4 12.Bf4 f5 13.b4 a6 14.a4 Ng6
 15.Bg3 Be6 16.Rfc1 Rc8 17.Qb3 Bh4 18.Qb2 Bxg3 19.hxg3 h5 20.Ne2 h4
 21.gxh4 Nxh4 22.Nxh4 Qxh4 23.Nf4 g5 24.g3 Qh7 25.Nxe6 Rxe6 26.Kg2
 f4 27.f3 g4 28.Bxe4 dxe4 29.gxf4 Rh6 30.Qb3+ Kh8 31.fxe4 Rh2+
 32.Kf1 Qh3+ 33.Ke1 Qg2 0-1



Kevin Cao put up a 2500 performance rating at the tournament.

Meanwhile, the Amateur Championship event, running alongside the Invitational, turned out to be a quite a hit. Even with 20 players pulled out for the Invitational, over 50 competitors showed up for the Amateur portion. The strong field would, in the end, be bested by two players. Expert Mark Ferber, and A Class Player Alex Marler tied for first when each was able to round up 4 wins and one draw. Ferber gave up an round two draw to Thomas Gaul, giving him slightly easier pairings, but he still had to take on two solid A players on Sunday, including the always tough Steve Bange.

Sicilian Dragon

Missouri Invitational Championship

W: Steve Bange (1903)

B: Mark Ferber (2016)

1.b4 f5 2.Bb2 e6 3.Nf3 Nf6 4.a3 Be7 5.e3
 0-0 6.Be2 b6 7.c4 Bb7 8.Qb3 Qe8 9.Nc3 Ne4 10.Nb5 Na6 11.d3 Ng5
 12.Nxg5 Bxg5 13.h4 Bf6 14.Bxf6 Rxf6 15.Qb2 Qe7 16.Rg1 d6 17.Qc2 c6
 18.Nc3 c5 19.b5 Nc7 20.a4 a5 21.0-0-0 f4 22.e4 Rf7 23.Rh1 e5 24.Nd5
 Nxd5 25.exd5 Bc8 26.Bf3 Bf5 27.Qe2 Qd7 28.Be4 Raf8 29.f3 Rf6 30.Rh2 Rh6 31.Rdh1 Rh5 32.Qf2 Qf7
 33.Kd2 Qg6 34.Bxf5 Qxf5 35.Ke2 Rf6 36.g3 fxxg3 37.Qxxg3 Rg6 38.Qf2 Qf4 39.Qe3 Kf7 40.Qf2 Rgh6
 41.Rh3 g5 42.Qg3 Rxh4 43.Qg2 Kg6 44.Qf1 Rxh3 45.Rxh3 Rxh3 46.Qxh3 Qf5 47.Qg2 h5 48.Qh2 Qf4
 49.Qg1 g4 50.d4 Qxf3+ 51.Kd2 cxd4 52.c5 Qc3+ 53.Ke2 Qc2+ 54.Kf1 Qc1+ 55.Kg2 Qxg1+ 56.Kxg1
 dxc5 57.d6 Kf7 58.d7 Ke7 0-1



Alex gained 66 rating points along with his new wall decoration.

Meanwhile Alex Marler won his early games. This put him up against the top seed in the section, FM Doug Eckert, in round three. Marler was able to take down the big dog, and went into Sunday leading the event. In round four he was nicked for a draw by Spencer Finegold, but he came through in the final round winning a long struggle against another 1900 player, Al Howlett. While both Marler and Ferber ended with 4.5, the tougher road gave Marler the better tiebreaks, earning him the Amateur Champion plaque. Alex, as seen on the MCB Cover, went “Kamsky” in his celebration, copying the enthusiasm GM Gata Kamsky displayed after snagging the US Championship earlier this year.

While they didn't finish at the top of the table, worth noting are the strong event had by players Dennis Hourcade, Ashwath Kumar, Jason Zhou, Ken West, Tom Gaul, Nathaniel Miller, and Jonah Smith. All performed above expectations and deserve mention for their efforts.



Coincidence? Or secret to winning chess??? Experts Mark Ferber, Jim Voelker, and Master Ron Luther all execute the “one hand think” tactic during the Missouri Invitational and Amateur Championships.



Players prepare to start round two of the Invitational Championship.

Modern Defense

Missouri Invitational Championship
W: Ron Luther (2204)
B: Selden Trimble (1913)

1.e4 d6 2.Nc3 g6
3.g3 Bg7 4.Bg2 Nf6
5.d3 Nbd7 6.Nge2
c6 7.0-0 0-0 8.h3

Rb8 9.Be3 b6 10.Qd2 Bb7 11.Bh6 d5 12.Bxg7
Kxg7 13.f4 dxe4 14.dxe4 Nc5 15.Qe3 Qc7 16.b4
Na6 17.a3 Rbd8 18.g4 Nb8 19.Ng3 e5 20.f5 Ng8
21.f6+ Nxf6 22.Rxf6 Kxf6 23.Qh6 Ke6 24.Rf1 Kd7
25.Qxh7 Kc8 26.Qg7 Qe7 27.Rf2 Ba6 28.Nf1 Bc4
29.Ne3 Rg8 30.Qf6 Qxf6 31.Rxf6 Be6 32.b5 cxb5
33.Nxb5 a6 34.Nc3 Nd7 35.Ncd5 b5 36.a4 bxa4
37.Nc4 Nc5 38.Rf1 Kb8 39.Rb1+ Ka7 40.Nxe5 Rd6
41.Nc4 Rd7 42.Na5 Rc8 43.Nb6 Rd1+ 44.Rxd1
Kxb6 0-1

Sicilian Defense

Missouri Invitational Championship
W: GM Ben Finegold (2592)
B: Nick Karlow (2043)

1.e4 c5 2.Nf3 d6 3.c3
Nf6 4.Be2 Nc6 5.d4
cxd4 6.cxd4 Nxe4
7.d5 Qa5+ 8.Nc3

Nxc3 9.bxc3 Ne5 10.Nxe5 Qxc3+ 11.Bd2 Qxe5 12.0-0
f6 13.Re1 Qd4 14.Rc1 g6 15.Rc7 Bf5 16.Qc1 h5
17.Bc3 Qb6 18.Bxf6 Rh7 19.Qc3 Kd8 20.Rc1 a5
21.Bd4 Qb4 22.Qxb4 axb4 23.Bb5 1-0

French Defense

Missouri Invitational Championship
W: Jialin Ding (2073)
B: Steven Rand (1912)

1.e4 e6 2.d4 d5
3.Nc3 Nf6 4.Bg5
Bb4 5.exd5 exd5
6.Bd3 Nc6 7.Nge2

Bg4 8.f3 Bh5 9.0-0 Bg6 10.Nf4 Bxc3 11.bxc3 0-0
12.Bxf6 gxf6 13.h4 Kh8 14.Re1 Qd6 15.g3 Rg8
16.Nxg6+ Rxg6 17.Bxg6 Qxg3+ 18.Kf1 Qh3+
19.Kf2 Qh2+ 20.Kf1 Qh3+ 21.Kf2 Qh2+ 22.Kf1
Qh3+ 1/2-1/2

English Opening

Missouri Invitational Championship
W: Steven Rand (1912)
B: Kevin Johnson (2000)

1.c4 c5 2.Nc3 Nc6
3.g3 g6 4.Bg2 Bg7
5.a3 e6 6.e4 b6
7.Nge2 Bb7 8.0-0

Nce7 9.d4 cxd4 10.Nxd4 d5 11.cxd5 exd5 12.exd5
Nxd5 13.Re1+ Nge7 14.Nxd5 Bxd5 15.Nc6 Bxc6
16.Bxc6+ Kf8 17.Bxa8 Qxa8 18.Qd6 Qe8 19.Bg5
Bxb2 20.Rxe7 1-0

Alapin Sicilian

Missouri Invitational Championship
W: GM Ben Finegold (2592)
B: Kevin Johnson (2000)

1.e4 c5 2.Nf3 Nc6
3.c3 Nf6 4.e5 Nd5
5.d4 d6 6.c4 Qa5+
7.Bd2 Ndb4 8.d5

Nxe5 9.Nxe5 dxe5 10.Be2 Bf5 11.0-0 Qb6 12.Qa4+
Bd7 13.Qb3 a5 14.Qc3 Qg6 15.g3 Nc2 16.Bd3 Bf5
17.Qxc2 Bxd3 18.Qa4+ Kd8 19.Bxa5+ Rxa5
20.Qxa5+ Kd7 21.Qb5+ Kc7 22.Nc3 Bxf1 23.Rxf1
e6 24.Qe8 f5 25.Nb5+ Kb6 26.Qd8+ 1-0

Queen's Gambit Declined

Missouri Invitational Championship
W: Selden Trimble (1936)
B: William Tong (1950)

1.d4 d5 2.c4 e6
3.Nc3 Nf6 4.Bg5
Be7 5.e3 0-0 6.Nf3
h6 7.Bh4 b6 8.cxd5

Nxd5 9.Bxe7 Qxe7 10.Rc1 Bb7 11.Be2 Nxc3
12.Rxc3 Rd8 13.Qc2 c6 14.0-0 Nd7 15.a3 Rac8
16.Rd1 c5 17.dxc5 Nxc5 18.Rxd8+ Rxd8 19.b4
Na6 20.h3 Nb8 21.Ne5 Qg5 22.Bf3 Nd7 23.Nxf7
Kxf7 24.Bxb7 Qe5 25.Rc8 Rxc8 26.Bxc8 Nf8
27.Qc1 a5 28.Bb7 Kg8 29.Bf3 Kf7 30.g3 Ng6
31.Kg2 axb4 32.axb4 Qd6 33.Qc3 Ne5 34.Qd4 Ke7
35.Be4 Kd7 36.f4 Qxd4 37.exd4 Nc6 *Endgame
study begins here!* 38.d5 exd5 39.Bxd5 Nxb4
40.Bg8 Kd6 41.Kf3 Nd5 42.g4 b5 43.g5 hxg5
44.fxg5 Ke5 45.h4 b4 46.Bxd5 Kxd5 47.h5 1/2-1/2

Scandinavian Defense

Missouri Invitational Championship
W: Jim Voelker (2151)
B: James Smith (1863)

1.e4 d5 2.exd5
Qxd5 3.Nc3 Qd6
4.d4 Nf6 5.Nf3 a6
6.Be2 Nc6 7.0-0

Bg4 8.Be3 0-0-0 9.Ng5 Be6 10.Nxe6 Qxe6 11.Bf3
Qc4 12.Ne2 e5 13.Bxc6 Qxc6 14.c3 Bd6 15.Qb3
exd4 16.Nxd4 Qd5 17.Qxd5 Nxd5 18.Bg5 Be7
19.Bxe7 Nxe7 20.Rfe1 Rhe8 21.Kf1 c5 22.Nf3 f6
23.Rad1 Nc6 24.Rxe8 Rxe8 25.Rd5 b6 26.h3 g6
27.Rd6 Kc7 28.Rxf6 Re7 29.Ng5 Nd8 30.f3 Kb7
31.Rf8 Rd7 32.Ke2 Kc7 33.Rh8 Re7+ 34.Kf2 Kd7
35.Rxh7 Rxh7 36.Nxh7 Ke7 37.Ng5 Kf6 38.f4 Nc6
39.Ke3 Ne7 40.g4 Ng8 41.Ne4+ Ke6 42.Ng3 Nh6
43.Kf3 c4 44.f5+ gxf5 45.Nxf5 Nxf5 46.gxf5+ Kxf5
47.Ke3 Kg5 48.Kd4 b5 49.Kc5 Kh4 50.Kb6 1-0

Follow these games interactively at www.mochess.org

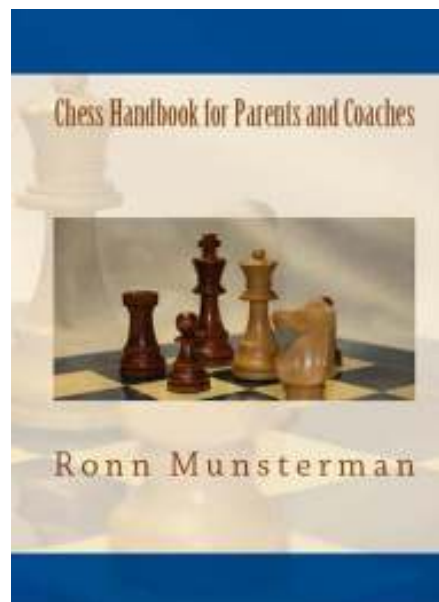
The Chess Handbook For Parents and Coaches

Book Review

Ronn Mustermann is a name known by many around Missouri Chess. Ronn is a Life Member of the Missouri Chess Association and one of its former Presidents. He currently plays and teaches chess in Iowa, and has just released his first book, *"The Chess Handbook for Parents and Coaches."* Check it out!

Coaches, could you use a solid lesson plan, or information about starting and running a chess club, or tips on preparing players for tournaments?

The Chess Handbook for Parents and Coaches provides parents and coaches a proven method of teaching chess for kids. Whether you know how to play or not, this book guides you through the process of teaching chess to a child. In sixteen clear, and easy to follow lessons, Part One - Teaching Chess, shows what and how to teach all the way from learning the pieces' names to checkmate, including the rules your player(s) will need to know. Part Two - The Chess World, explains what goes on in chess, how tournaments work, how to coach players, from new to advanced, how to coach kids who are playing older kids, who the famous chess players are, and much more. Parents and coaches will gain tips from an experienced, certified coach with insights into teaching chess and the chess world.



About the Author:

Ronn Munsterman is a USCF Certified Coach with over seven years of coaching experience. His coaching philosophy is, first and foremost, that the game should be fun for the players. Known simply as "Coach," his students learn to play by all the rules of chess, learn sound chess fundamentals, and are challenged to grow stronger every week.

He first joined the United States Chess Federation in 1987. He is a member of the Iowa State Chess Association and a Life Member of the Missouri Chess Association. He organized and ran the Kansas City Corporate Chess Club from 1989 to 1991. From 1990 to 1995, Munsterman held several positions for the Missouri Chess Association, including Board of Directors, President, Editor – *Missouri Chess Bulletin*, and Membership Coordinator.

In 1994, Munsterman won the Missouri State Reserve Championship with a score of 4.5 out of 5.

Munsterman began coaching when his son, Nathan, was in the first grade. He has coached players in grades 1 – 12. His elementary team from rural Troy, KS, won second place in two consecutive State championships, and one year won first place in six consecutive tournaments, all while competing against much larger schools. His players consistently placed in the top ten in Kansas Scholastic Chess Association tournaments, and won first place eight times. His top four players won the prestigious match-play Kansas City Cup twice, once in elementary, and once in middle school.

Munsterman currently coaches elementary and high school-aged players in Iowa where he lives with his wife, Berta.

Chess Handbook for Parents and Coaches, by Ronn Munsterman

\$16.95 (212 pages—US Trade Paperback)

Order from: <https://www.createspace.com/3443146> or www.amazon.com or www.BarnesandNoble.com (Under review for possible sale on USCF Sales.)

Order the e-book (.pdf) \$8.95: http://stores.lulu.com/ronn_munsterman

Visit the author's website for a free preview: www.ronnmunsterman.com

Hua Shines at World Youth Competition

The World Youth Championships is a FIDE event held each year in rotating locations across the globe. According to USCF regulations, a player must be in the top 3 of their age category (or within 50 points of the 3rd place qualifier) in order to earn a spot in the World Youth. The trip is more than just a chess tournament, as the USCF supplies top notch coaches such as GM John Fedrowowicz, GM Sam Palatnik, and other International and Fide Masters as instructors. This plus accommodations give the US contingent a great chance to succeed against the best young players from around the world.

In 2008, Margaret Hua had the opportunity to represent the U.S. at the World Youth Championship (U10 division) in Vietnam. The trip was a great opportunity for a young player like Margaret to meet new friends, gain experience and play some top notch chess competition. In that trip, she finished T-51st with a final score of 4.5/11. Not a bad showing for a player with their first exposure to such a special event.



Margaret joined 1400 players from 87 countries at the 2010 World Youth.

However, in 2010, Margaret once again qualified for this prestigious event. This time she was looking for more than just a good time. While her USCF rating barely qualified her for the event, Margaret had a much more impressive FIDE rating as she seems to score particularly well at some big events. This put her near the top of her division, and that was right where she would end the event too. This time around, with the event in a beautiful resort in Halkidiki, Greece, Margaret finished in 10th place in a field of 117 elite players. She concluded the event with a score of 7.5/11, scoring 6 wins, 3 draws and 2 losses. A superb performance, showing how vastly she has improved in the past two years.

Below are three games Margaret shared from the event.

Sicilian Dragon—Yugoslav
 World Youth Championships 2010
 W: Margaret Hua (1943)
 B: Pierina Rosales (1785)

Annotations by Margaret Hua. **1.e4 g6 2.d4 c5 3.Nf3 Bg7 4.Nc3 cxd4 5.Nxd4 Nc6 6.Be3 Nf6 7.f3 0-0 8.Qd2 d6 9.0-0-0 Bd7 10.g4** (might be all book moves) **10...Qa5 11.Kb1 Rfc8 12.h4 a6** (her attack is too slow) **13.h5 Ne5 14.hxg6**



Typical opposite side castling situation arises after 12..a6, with both sides preparing to rush the kings.



How does black hang on after 18. Bf8??

hxg6 [14..fxg6 would be better because it doesn't open up the h-file.] **15.Bh6 Bh8 16.Qh2 Nc6 17.Nd5 Qd8 18.Bf8 Nh5** (only move that doesn't lose quickly) **19.Nxc6 bxc6 20.Bxe7 Qe8 21.Nf6+ Bxf6 22.Bxf6 Bxg4 23.fxg4 Qe6 24.gxh5 Qxf6 25.hxg6 fxg6 26.Bc4+** (26. Rdf1 is also very strong) **1-0**



Black throws in the towel after 26. Bc4+.

Photos courtesy of Diane Mao

Sicilian Defense

World Youth Championships 2010
W: Margaret Hua (1943)
B: Gunay Mammadzada (1815)



Black cracks under the pressure, 32. Rxf5 drops the exchange for no compensation.

Annotations by Margaret Hua 1.e4 c5 2.Nf3 d6 3.d4 cxd4 4.Nxd4 Nf6 5.Nc3 a6 6.f3 e6 7.Be3 b5 8.Bd3 [8.Qd2 with O-O-O and g4 later would be better.] 8...Bb7 9.Nce2 Nbd7 10.0-0 Nb6 11.Kh1 Be7 12.c3 0-0 13.Ng3 Qc7 14.f4 Rfd8 15.Qe2 Nbd7 16.Bd2 Nc5 17.Bc2 Bf8 18.Rae1 e5 19.Ndf5 (My pieces are in good squares to attack, and I don't have to worry too much on my e-pawn.) 19...exf4 20.Bxf4 Ne6 21.Nh5 Nxf5 22.Qxh5 g6 23.Qg4 (pinned and I have alot of pressure on the king side. maybe I can move my rook up and over.) 23...Kh8 24.Nh6 Nxf4 25.Qxf4 Bxh6 26.Qxh6 d5 27.Rf4 d4 28.Ref1 Rf8 [28...dxc3 29.Rxf7 VERY bad.] 29.Rh4 f6 (best move) 30.Qxg6 dxc3 31.e5 f5 32.Bxf5 [32.Rxf5 this would be much stronger because I can move this rook to h5 and have lots of pressure.] 32...Rxf5 [32...Rf7 would be okay. 33.e6 Rg7] 33.Qxf5 (definitely winning) 33...Rg8 34.Rg4 Rxg4 35.Qxg4 Qg7 36.Qxg7+ Kxg7 37.bxc3 Bd5 38.a3 1-0



After 21. Nh5, whites pieces are swarming around the Black King.

Bishop's Opening

World Youth Championships 2010
W: Margaret Hua (1943)
B: Nezihe Menzi (1818)



34. Nxd5, finally picking up a pawn, with threats for more.

Every strong player has to win both tactic melee's and slow positional struggles. This game shows Margaret is capable of both. 1.e4 e5 2.Bc4 Nf6 3.d3 c6 4.Nf3 d5 5.exd5 cxd5 6.Bb5+ [6.Bb3 d4 7.Nxe5 (7.Ng5 Bg4 8.Bxf7+ Ke7 9.Qd2 h6 10.Qb4+ Qd6 11.Qxd6+ Kxd6) 7...Qa5+ loses a knight.] 6...Bd7 7.Bxd7+ Nbx7 8.Qe2 Bd6 9.0-0 0-0 10.Bg5 h6 11.Bh4 Qc7 12.Bg3 Nh5 13.c3 Nxc3 14.hxg3 f5 15.Nbd2 Nf6 16.Rfe1 Rae8 17.Nf1 g5 18.N3h2 rearranging my knights to make it harder for black to push the pawns. 18...Qd7 19.Ne3 f4 lets me have a place to put my knight. 20.Neg4 fxg3 21.fxg3 Qg7 22.Nxf6+ Rxf6 23.Ng4 Rfe6 24.Ne3 e4 25.Nf5 Qe5 26.Qg4 Bc7 27.d4 Qf6 28.Ne3 Rd6 29.Rf1 Qg6 30.Rf5 Red8 31.Raf1 Qe6 32.Qh5 [32.Nxd5 would be much better for me.] 32...Qg6 33.Qxg6+ Rxg6 34.Nxd5 Bd6 35.Nf6+ Kg7 36.Nxe4 Rd7 37.Nxd6 Rxd6 38.Re1 Ra6 39.a3 Rb6 40.Re2 Kg6 41.Rfe5 Kf6 42.g4 Rbd6 43.Kf1 a6 44.Ke1 b5 45.Kd1 Rb7 46.d5 Rbd7 47.Re6+ Kf7 48.Rxd6 Rxd6 49.Rd2 Kf6 50.Rf2+ Ke5 51.Rf5+ Ke4 52.Kc2 Rg6 [52...Rxd5 53.Rxd5 Kxd5 54.Kd3 I'm up a pawn and going to win in the end.] 53.Kb3 Rg7 54.Rf6 Kxd5 55.Rxh6 Ke4 56.Rf6 cutting the king off so it can't take the g pawns. 56...Rh7 57.Rf5 Rg7 58.Kb4 Rg6 59.c4 bxc4 60.Kxc4 Rc6+ 61.Kb4 Rc2 62.Kb3 Rxc2 63.Rxc5 Kf4 64.Ra5 Rg3+ 65.Ka2 Kxc4 66.Rxa6 Kf4 67.Re6 Kf5 68.Re8 Kf6 69.b4 Kf7 70.Re1 Kf6 71.b5 Rg5 72.a4 Rc5 73.Kb3 1-0



The event was held at the beautiful Porto Carras Resort. When not playing chess, the players and family could enjoy the resort or visit a number of famous Greek landmarks.

Endgame Studies

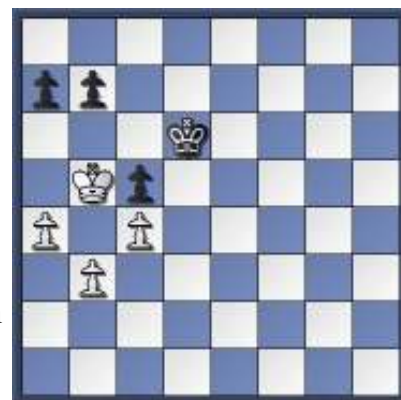
By Selden Trimble



Starting Position

In the St. Louis Premier last July 24th, I had black in the 3rd round against one of the tournament winners, Graham Horobetz, a young man from Tennessee. Due to a bad miscalculation, I arrived in the following king-and-pawn endgame. White has the better of it because his king is nearer the pawns.

[Diagram Right] **37.Kd2 Kf4 38.Kd3 Ke5??** A bad mistake that loses the game. Black decides to go on the defensive. But in a position like this, being on the defensive allows no error in calculation: It becomes too easy for your opponent to win. I think it can be safer to go on the offense. If there's a miscalculation then, at least some counter play may exist. Much better here would have been 38. ... b6!. When the White king moves to the c-file, the Black king goes to e3 and attacks White's pawns from the rear. With careful but straightforward play, Black holds the draw. In fact, if White is too aggressive, he may lose himself! **39.Kc4 Kd6 40.Kb5 Kd5 41.c3** White gains an important tempo. [41.c4+?? draws] **41...a6+**



Black's King is tied to defense, and pawn moves are trouble.

[41...Kd6 42.c4 forces Black's king to stay on d6 to guard his c-pawn. But any pawn move by Black allows White's king to get to the 6th rank and win a pawn and the game.; [Diagram right] 41...c4 This gives White a hard time.

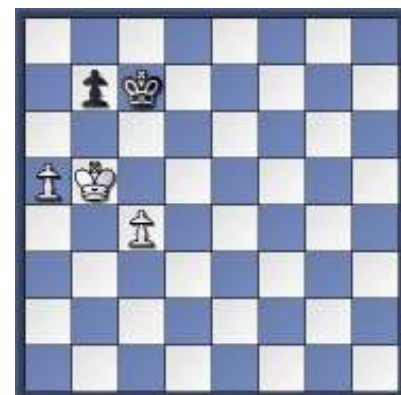
- 42.bxc4+ (42.b4 a6+ (42...b6 43.a5 bxa5 44.bxa5 a6+ 45.Kxa6 Kc6 46.Ka7 Kc7 47.a6 Kc8 48.Kb6 and White wins.)) 43.Kb6 Ke4 44.Kxb7 Kd3 45.Kxa6 Kxc3 46.b5 After any other move by White, Black can make any legal move he wants and still draw!) 46...Kd3 and both queen at the same time. Of course, either side can still make a bad move and lose. But this position is a theoretical draw. (See the Namilov database) (46. ... Kd4 also draws, but any other move loses.)

41...c4 This gives White a hard time.

- 42...Kd6 43.c5+ Kc7 (if 43...Kd5 44.c6 bxc6+ 45.Ka6; or 43...Kd7 44.c6+ bxc6+ 45.Ka6 White wins in either case.) 44.a5 a6+ 45.Kb4 Kd7 The next several moves revolve around White's attempt to get his king to d5 while keeping Black from getting his king to b5. 46.Kb3 Kc7 47.c4 Kc6 48.Kb4 Kc7 49.Kc3 Kc6 50.Kd4 Kc7 (If 50...Kd7 51.Kd5 Kc7 52.c6 bxc6+ 53.Kc5 Now White has the opposition and wins in a straightforward manner.) 51.Kd5 Kd7 52.c6+ bxc6+ 53.Ke5! (53.Kc5 draws after 53. ...Kc7.) 53...Kc7 54.c5 The only move that allows White to win, according to the Namilov database. 54...Kd7 55.Kf6 Kd8 56.Ke6 Kc7 57.Ke7 Kc8 58.Kd6 Kb7 59.Kd7 White wins Black's c-pawn and the game.]

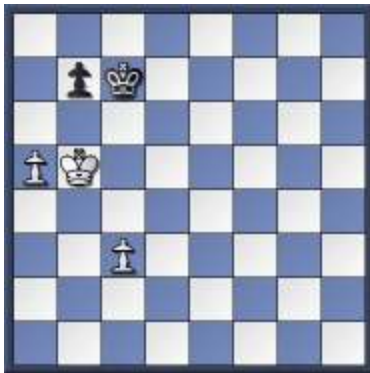
- 42...Kd6 43.c5+ Kc7 (if 43...Kd5 44.c6 bxc6+ 45.Ka6; or 43...Kd7 44.c6+ bxc6+ 45.Ka6 White wins in either case.) 44.a5 a6+ 45.Kb4 Kd7 The next several moves revolve around White's attempt to get his king to d5 while keeping Black from getting his king to b5. 46.Kb3 Kc7 47.c4 Kc6 48.Kb4 Kc7 49.Kc3 Kc6 50.Kd4 Kc7 (If 50...Kd7 51.Kd5 Kc7 52.c6 bxc6+ 53.Kc5 Now White has the opposition and wins in a straightforward manner.) 51.Kd5 Kd7 52.c6+ bxc6+ 53.Ke5! (53.Kc5 draws after 53. ...Kc7.) 53...Kc7 54.c5 The only move that allows White to win, according to the Namilov database. 54...Kd7 55.Kf6 Kd8 56.Ke6 Kc7 57.Ke7 Kc8 58.Kd6 Kb7 59.Kd7 White wins Black's c-pawn and the game.]

42.Kb6 c4 43.bxc4+ Kxc4 44.a5 Kxc3 45.Kxb7 1-0



Can White make use of his extra pawn?

In analyzing this game, I discovered the following position, which I found interesting because it's a draw. [Diagram right] In fact it's a draw if White's a-pawn is on any of a2, a3, a4, or a5, if White's c-pawn is on c4 or c5, and if Black's king is on c7 or d7. It doesn't even matter whose move it is. The trick seems to be for Black to move his king back and forth on c7, d7, and c8. If White's king goes to a7, then Black's king goes to c7. If White offers to exchange pawns, Black obliges. His king can keep the other pawn from queening. The following line suggests what to do in the general case. **1. Kc5 Kb8 2.Kb6 Kc8 3. Ka7 Kc7 4. a6 bxa6 5. Kxa6 Kc6 6. Ka5 Kc5** (This is drawn.)



However, if the White pawn is on c2 or c3, then White can win as follows: (Diagram right) **1. Kc5 Kd7 2. Kb6 Kc8 3. a6 bxa6 4. Kxa6 Kc7 5. Kb5 Kd6 6. Kb4 Kd5 7. Kb5 Kd6 8. c4 Kc7** {If 8. ... Kd7, then 9. Kb6.} **9. Kc5** {And wins. After exchanging his a-pawn for Black's pawn, White had enough space to get his king back in front of his c-pawn.}

These positions can be followed interactively at www.mochess.org/games

The following position was reached in a last round game between Selden Trimble and William Tong in the recent Missouri Invitational played at the Saint Louis Chess Club and Scholastic Center. White was under the impression that if he captured the knight, Black's king would be able to capture White's b4-pawn and win the game. White forgot one of the principles of pawn endgame play: When a pawn up, you often win by sacrificing one of your pawns in order to queen another. [Diagram right]



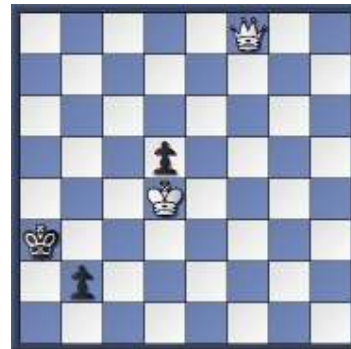
Starting position

White to move. **38. Bxc6+!** { White actually played 38. d5? and, after some difficulty, drew. (The full can be seen on page 10) If he'd won, he would have tied with IM Mike Brooks for third place in the tournament. After the game, William Tong pointed out that 38. Bxc6+! was probably a win for White. The note below to Black's 39th move is his analysis. This was what White failed to see. End-



game mistakes are costly.} **Kxc6 39. Kf3 Kd5** {If 39. ... Kb5, White queens first. For example, 40. Ke4 Kxb4 41. f5! exf5+ 42. Ke5! Kc3 43. d5 b5 44. d6 b4 45. d7 b3 46. d8(Q) b2 47. Qd1.} **40. Ke3 b5** {This gets Black's pawn one square nearer to queening.} **41. Kd3 h5 42. g4** {Black must guard the f5 square against a pawn push by White. (See the note to Black's 39th move.) That idea accounts for his next two moves.} **hxg4** {If 42. ... g6, then 43. gxh5 gxh5 44. Ke3 Kc4 45. Ke4 Kxb4 46. d5 exd5 47. Kd4! leads to the same line discussed below.} **43. hxg4 g6 44. Ke3** [Diagram left]

Kc4 {Or 44. ... Kc6 45. Ke4 Kd6 46. d5! exd5+ 47. Kd4 Ke6 48. f5+ gxf5 49. gxf5+ Kxf5 50. Kxd5. White will then capture the b5-pawn and queen his remaining pawn.} **45. Ke4 Kxb4 46. d5! exd5+ 47. Kd4!** {White must deny Black's king an entry onto the c-file. This will force Black's king to move to the a-file where a future White check on a8 will be fatal. If 47. Kxd5?, then Black draws by 47. ... Kc3.} **Ka3** {If the king moves to a4 or a5, then White will be able to capture Black's queen on b1 by checking him, first on a8 and then on b8.} **48. f5 gxf5 49. gxf5 b4 50. f6 b3 51. f7 b2 52. f8=Q+** {[Diagram right] The fact that White queens with check is crucial. If White's queen were on g8, for example, the game would be drawn. Note that, if Black's king were on a4 or a5, then Black could queen his pawn, only to lose the queen to checks on a8 and then b8. (See the note to Black's 47th move.) The game might continue as follows:} **Ka2 53. Qa8+ Kb1 54. Kd3 Kc1 55. Qa3** {Black is helpless. It's mate in three.}



Support The MCA!

Please check your [MCA membership](#) expiration date. If it will expire within a few months, [renew](#) today. We hope you appreciate the MCA and its website at www.mochess.org. The printed MCB is sent to current Members for only \$20, and all other Members can view the MCB online at www.mochess.org even less.

Tactics Simplified!

~ Ron Luther ~

Tactics Simplified!

In this installment, we will look at some other tactical motifs, and ideas.

Sometimes squares can be considered as defenders.

Why? Because having certain squares available, sometimes allows the King to run, as well as allows other pieces to defend threats.

One other thing to consider is move order manipulation.

Now you may ask what the heck is that? Simplified it means:

If the 1st time you look at a combination and it doesn't work, look at changing the move order around, then see if it works.



Puzzle Solutions can be found on Page 22

The following positions contain some of these ideas.



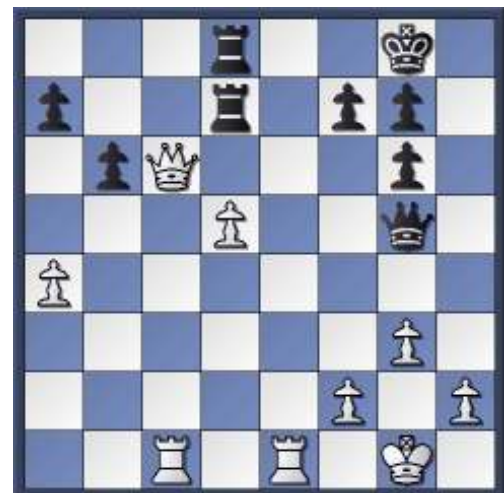
#1. Black to Move



#2 White to Move



#3 White to Move



#4 White to Move

Ron Luther ronluther@sbcglobal.net

Mid America Open!
March 18-20th, 2011
5th Annual Mid-America Open

5SS,40/2 SD/1 (2 day option, rds 1&2 G/75)

Location: Crowne Plaza Hotel St. Louis-Clayton, 7750 Carondelet Ave., St. Louis MO 63105

- ♙ Prizes: 20,000 in prizes based on 230 paid entries, minimum \$16,000
- ♙ Sections: Five Sections: Open, U/2000, U/1800, U/1600, U/1300
- ♙ Entry Fee: 3day 113.50, 2day 112.50 by 3/10, \$115 online by 3/15. U/1300 and Unr \$60 less.
- ♙ Registration: 3-day schedule: ends Fri 6 pm, 2-day schedule: Ends Sat. 10 am
- ♙ Rounds: 3 day Fri 7 pm, Sat 11 am & 6 pm, Sun 10 am & 4:15 pm
2 day Sat. 11 am, 2:30 pm & 6 pm, Sun. 10 am & 4:15 pm
- ♙ Byes: Half point byes OK
- ♙ MCA membership required for Missouri residents

Advance entries/info:

Continental Chess, Box 249, Salisbury Mills NY 12577.
chesstour.com, chesstour@aol.com, 845-496-9658

Local Chess Clubs

Heart of America Chess Association

Noland Baptist Church
4505 S Noland Rd. Independence, MO 64055
Meets: Friday nights 7-11pm
Community Club, No fee to play
Contact Bob Holliman-chessbob@aceweb.com

Westport Chess Club

Westport Flea Market 817 Westport Rd. Kansas City, MO
Meets: Tuesdays 6:30 to 11:00 PM
\$2 for adults, \$1 for Students and under 18
Contact Ray Birt-westportchessclub@gmail.com
Website-http://www.westportchessclub.org

Chess Club and Scholastic Center of St. Louis

4657 Maryland, Saint Louis, Missouri 63108
Club open Tuesday-Sunday
Weekly Blitz, Bughouse, Lessons, and Tournaments
Contact Tony Rich-trich@saintlouischessclub.org
or call 314-361-CHESS
Website-http://saintlouischessclub.org

St. Louis Chess Club

St. Louis Bread Company 6630 Delmar Ave. (U-City)
Chess played every night 6-9pm, most players come week-ends
Contact Joesph Garnier-chessoholic@sbcglobal.net

Your Club Here!

Email bdhowe@yahoo.com to have your club advertised
in the MCB and the MCA Website.

St. Peters Chess Club

235 Salt Lick Road, St. Peters
Beginner Classes: Fridays 4-5 pm--Free!
Intermediate/Advanced classes: \$10/hr
Open chess club 5-7 pm
Contact Tim Nesham-tim.nesham@gmail.com

Univ. of Missouri Chess Club

Memorial Union (518 Hitt Street) Room N206, Columbia
Meets: Mondays 7 to 10 PM August-May
Contact Charlie Ward-czar8196@gmail.com
Website-http://muchess.students.missouri.edu

Missouri S&T Chess Club

Havener Center, Shamrock Room Missouri S&T
1346 N. Bishop, Rolla, MO 65409
Meets: Thursdays 7 to 9 PM
Contact Thomas Rehmeier-trrthf@mst.edu

Springfield Park Board Chess Club

Southside Senior Center 2215 S. Fremont Ave., Springfield
Meets: Fridays 6:30 to 11:00 PM
Contact Joe Brozovich- jmbroz@att.net or call 417-882-3992
Website- http://www.springfieldparkboardchessclub.com

Frontier Chess Association

Conference room, St. Joseph Public Library St. Joseph, MO
Meets: Fridays 7-9 PM Fees: \$5 per visit, \$40 annual
contact Jim Heitz-jcatrotg@ccp.com
Call 816-238-3048 after 5p.m.
Website- http://frontierchess-stjomo.tripod.com

Scholastic Schedule

Upcoming National Events:

National K-12 Championship December 10-12

Disney's Coronado Springs Resort
1000 W. Buena Vista Dr.
Lake Buena Vista FL 32830

National Junior High (K-9) Championship April 15-17

Hyatt Regency Columbus
350 N. High Street
Columbus, OH 43215

National High School (K-12) Championship 29 April - 1 May

Gaylord Opryland Resort and Convention Center
2800 Opryland Drive
Nashville, TN 37214

National Elementary (K-6) Championship 6-8 May

Hilton Anatole
2201 Stemmons Freeway
Dallas, TX 75207

Missouri Tournaments

Gateway Chess League Board Tournament

Saturday, December 4th
Wydown Middle School
6500 Wydown
Saint Louis, MO 63105
<http://www.gatewaychess.org/>

Parkade December Open

December 11th
Parkade Center -- Columbia
Contact Tim Campbell
TRJCAMP@aol.com

Gateway Chess League Class Tournament

Saturday, January 8th
Lindbergh High School
4900 S. Lindbergh
St. Louis, MO 63126
<http://www.gatewaychess.org/>

Parkade January Open

January 15th
Parkade Center -- Columbia
Contact Tim Campbell
TRJCAMP@aol.com

Gateway Chess League Team Tournament

Saturday January 29th
Belleville East High School
2555 West
Belleville, IL 62221
<http://www.gatewaychess.org/>

Gateway Chess League Action Tournament

February 5th
Lindbergh High School
4900 S. Lindbergh
St. Louis, MO 63126
<http://www.gatewaychess.org/>

Missouri State Scholastic Championship

Saturday February 26th
Capitol Plaza Hotel
415 W. McCarty St.
Jefferson City, MO 65101
<http://www.gatewaychess.org/>

Denker Qualifier Tournament Girls Championship Tournament

Saturday March 2nd
Capitol Plaza Hotel
415 W. McCarty St.
Jefferson City, MO 65101
<http://www.gatewaychess.org/>

Gateway Chess League Spring Open

Saturday March 19th
Chaminade High School
425 South Lindbergh
St. Louis, MO 63131
<http://www.gatewaychess.org/>

UPCOMING TOURNAMENTS



Nov 26-28 Thanksgiving Open—St. Louis

6SS, G/120(2-day option Rds 1-3 G/65) Chess Club & Scholastic Center of Saint Louis, 4657 Maryland Ave. Saint Louis, MO 63108. Free entries for GMs and IMs, deducted from earnings. GMs and IMs are not counted toward the based on prize fund. EF: 3 day \$99 if received by 11/20. \$119 at site. 2 day \$98 if received by 11/20. \$118 at site. Juniors may pay half entry fee, but compete for half the prizes. Scholastic Entries count half for based on totals. 3 Sections: (Open, U1800, U1400) PF: \$10,000 (b/100): Open: \$\$GTD \$1,600-\$1,000-\$600-\$400 U2200: \$500-\$300. U2000: \$450-\$250. U1800: \$1,000-\$500-\$300. U1600: \$450-\$250. U1400: \$1,000-\$500-\$300. U1200: \$250-\$150. U1000: \$225-\$125. Unrated players may play in any section but are only eligible to win place prizes. 3 day schedule Reg: Fri. 11:00-12:30 Rds: Fri 1, 6 Sat 1, 6 Sun 10, 3. 2 day schedule Reg: Sat. 8-8:45 Rds: Sat: 9, 12, 3, 6. Sun: 10, 3. Schedules merge after Round 3. Re-entry: \$60 (available in all sections and not counted toward b/PF. Top 3 overall qualify for 2011 Club Championship. Three 1/2 point byes available if declared before Round 1. Hotel (ask for chess rate): Chase Park Plaza Hotel 1-877-587-2427, \$159/night. Parkway Hotel 314-256-7777, \$97/night. Water Tower Inn 314-977-7500, \$70/night. Ent: 4657 Maryland Ave., Saint Louis, MO 63108, or online at saintlouischessclub.org Info: 314-361-CHESS info@saintlouischessclub.org

December 18th End of Year Bash—St. Louis

4SS, G/75. Chess Club & Scholastic Center of Saint Louis, 4657 Maryland Ave. Saint Louis, MO 63108. Free entries for GMs and IMs, deducted from earnings. GMs and IMs are not counted toward the based on prize fund total. EF: \$30, \$25 for annual members of the club if registered by 12/16. MCA Membership Req'd from \$5. OSA. 3 Sections: Open, U1700, U1300. PF:(b/40) \$950: Open: \$300-\$100. U1700: \$225-\$75. U1300: \$200-\$50. Winner of Open Section qualifies for 2011 Club Championship. Reg: 9-9:45. Rds: 10, 12:45, 3:30, 6:15. One 1/2 point bye if declared before round 1. Hotel: Water Tower Inn at 314-977-7500 ask for the "chess rate" of \$70/night. Ent: 4657 Maryland Ave., Saint Louis, MO 63108, or online at saintlouischessclub.org Info: 314-361-CHESS info@saintlouischessclub.org. WCL JGP.

January 22nd Mikhail Tal Open—Columbia

3SS, G/75. UMC Memorial Union room S203, 518 Hitt St., Columbia MO. Directions: From I-70 exit 126, south on Providence, east on Rollins, north on Hitt. Reg: 9:30-10:15. Rds: 10:30, 1:15, 4:00. EF: \$1. No prizes—Just the satisfaction of playing well. Two rating-equivalent sections if 18+ players. Entries/Info: [Charles Ward](mailto:Charles.Ward@umc.edu), 2400 Cimarron Drive, Columbia, MO 65203, 573-443-6685.

March 12th Mizzou Quads—Columbia

UMC Memorial Union room S203, 518 Hitt St., Columbia MO. Directions: From I-70 exit 126, south on Providence, east on Rollins, north on Hitt. Entries/Info: [Charles Ward](mailto:Charles.Ward@umc.edu), 2400 Cimarron Drive, Columbia, MO 65203, 573-443-6685.

March 18-20 Mid America Open -- St. Louis

5th annual Mid-America Open. 5SS, 40/2, SD/1 (2-day option, rds 1-2 G/75), Crowne Plaza Hotel St. Louis-Clayton, 7750 Carondelet Ave., St. Louis MO 63105 (I-64 W/US 40-W Exit 32B, 1.2 miles north on Hanley Rd). \$\$ 20,000 in prizes based on 230 paid entries (\$60 off entries & re-entries count half), minimum \$16,000 (80% of each prize) guaranteed. Five Sections: Open, U/2000, U/1800, U1600, U1300. Entry Fee: Top 4 sections: 3day 113.50, 2day 112.50 by 3/10, \$115 online by 3/15. U/1300 and Unrateds \$60 less. 3-day schedule: Reg. ends Fri 6 pm, rds. Fri 7 pm, Sat 11 am & 6 pm, Sun 10 am & 4:15 pm. 2-day schedule: Reg. ends Sat. 10 am, rds. Sat. 11 am, 2:30 pm & 6 pm, Sun. 10 am & 4:15 pm Half point byes OK all; Open must commit before rd 2, others before rd 3. Hotel Rate \$89 Entry: Continental Chess, Box 249, Salisbury Mills NY 12577. Info: chesstour.com, chesstour@aol.com, 845-496-9658

April 2nd The Columbia Open—Columbia

4SS, G/75; Howard Johnson Inn, (formerly Best Western) 3100 I-70 Dr SE, Columbia, MO 65201; Prizes: \$500 b/30: \$150 1st, \$100 2nd, \$75 each U1800, U1500, U1200, Upset prize, \$25. Registration: 9-9:45am ; Round times: 10, 1, 3:30, 6:30 Entry Fee: \$20 rec'd by 3/30 \$25 on site. Max 1 half pt bye; MCA required, available on site from \$5. Entries/Info: Bob Howe, 311 E. Walnut, Pacific, MO. 63069. 636-234-7928. <bdhowe@yahoo.com> (If 25+ participants, winner qualifies for MO Invitational)

Visit www.mochess.org/Tournaments.htm for an up-to-date calendar of Missouri chess events.

Featured Game

James L. Smith

2010 Denker Tournament of Champions "Best Game" Winner

This summer I had the honor of representing Missouri in the Arnold Denker Tournament of High-School Champions. (other wise known as just the "Denker") I had a great time and also played some good chess. (Most of the time that is. hehe) But anyway, there were I think 47 states represented there with most being over 2000 and around 12-13 being Masters. In the first round I had the bad luck of playing one of California's back up players. (The only round he played it turns out.) He was also a Master. I lost pretty quickly in that game. The 2nd round went pretty smoothly with me beating the North Dakota Denker Rep. In the 3rd round I lost to the Tennessee Denker Rep. after blundering horribly. But here I'd like to go over my 4th round game against the Idaho Representative. I felt pretty good before this game after having gotten down to the tournament hall with plenty of time to spare before the round and had had time to walk around outside for awhile before coming back in. (Unlike my last-round game in the US Open where I arrived 50 minutes late for my game, thinking the round was at 7:30pm like all the previous days instead of 3pm!!)



Semi-Slav Defense

Denker Tournament of Champions

W: James L Smith (1879)

B: Adam Jiang (1561)

Annotations by James Smith 1. **d4 d5** 2. **c4 c6** 3. **Nc3 Nf6** 4. **Nf3 e6** {Instead of e6 I had expected dxc4 with Black playing the Slav. But with e6 he takes it into a Semi-Slav, Meran System.} 5. **e3** ({Another move is Bg5 which Van Wely frequently plays but in my opinion black seems to be ok after:} 5. *Bg5*

Nbd7 6. *cxd5 exd5* 7. *e3 h6* 8. *Bf4* {Although White can be comfortable playing for a win against the Karlsbad pawn structure. Like in a QGD: Exchange Variation.} 5.. **Nbd7** 6. **Bd3 dxc4** 7. **Bxc4 b5** 8. **Bd3** {All book so far.} **Bd6** ? {Not sure about this move. Usually they play 8..a6 or 8..Bb7. Especially with me wanting e4 it just seems to help me.} 9. **e4 b4** 10. **Ne2** {Threatening e5.} ({I thought about e5 instead of Ne2 but after:} 10. *e5 bxc3* 11. *exd6 cxb2* 12. *Bxb2*

{White is slightly better but I have doubled pawns on the d-file which I didn't like. So I decided to just play it safe and threaten e5.}) 10... **Be7** {What he should have done instead of Bd6 if he was going to develop the king-bishop.} 11. **O-O O-O** 12. **Qc2!** {Wins a pawn because if he protects the c6 pawn then I just play e5 and win the h7 pawn.} **h6** {He thought for around 30 minutes then played h6 which is his best move because not only does it keep me from winning the h-pawn but it also keeps my knights and bishops from g5 in the future.} (12...*Bb7* 13. *e5 Nd5* 14. *Bxh7+ Kh8* 15. *Be4*) 13.

Qxc6 {After Qxc6 I got up and walked around a bit to look at other games



Black creates a tactical melee with 16. Nc5.

before going back to the board. I returned to find that he had played:} **Rb8** {I thought he would play Nb6 which is a little better I think. Because after:} 14. **Bf4 Bb7** {(Pretty much the only move here because if Rb6 then I just play Qa4 and play something like Rac1 and Bc7.}) 15. **Qa4** ({I have a fairly big advantage.} {Qb5 seems to win the exchange but after:} 15. *Qb5 a6* 16. *Qa4 Nb6* 17. *Qb3 Nxe4* 18. *Bxb8 Qxb8* {White is still better but Black gets a lot of counter-play.}) 15.. **Ra8** {Keeps the a7 pawn.} 16. **Rac1** ? {Drops the e-pawn. At the time I didn't think he could take it because of Bc7. But now I see that with correct play he is perfectly fine.} ({I should have played:} 16. *Ng3 \$!42 Qb6* 17. *Rac1 Rfc8* 18. *h3 a6* {And White still has the edge.}) 16.. **Nc5** {Here I was shocked. Nc5?? It was not a wise move. I think he thought he was fine after



12. Qc2! Threatens not one, but two pawns. Do you see how?

17. **dx5 Qxd3** because he seems to win the e-pawn but in that case I have Ng3. He should have just taken the e-pawn with 16...*Bxe4*.} (16... *Bxe4* 17. *Bxe4 Nxe4* 18. *Bc7 Qe8* 19. *Nf4 Nb6* 20. *Qxe8 Rfxe8*) 17. **dx5 Qxd3** 18. **Ng3 Nxe4** {Here again, I was shocked. Instantly seeing 19. *Rfd1 Nxc5* 20. *Rxc5 Qxd1+* 21. *Qxd1*. with an winning position for me.} 19. **Rfd1 Nxc5** 20. **Rxc5 ! Qxd1+** {Qxd1+ is his only move because if anything else he is just down a piece for a pawn.} ({For example:} 20... *Qa6* 21. *Qxa6 Bxa6*) 21. **Qxd1 Bxc5** {Here I took stock of the position. Queen and Knight versus 2 Rooks (among other pieces) and a pawn. Most likely completely winning. So here I tried to think of a plan. Then seeing how all my pieces were on the kingside and almost all of his were on the queenside and how he had no knight on f6 the most logical thing would be a



Wih 18. *Nxe4* Black recovers his material, but at a heavy price, 19. *Rfd1* punishes his short term plan.



What's a Best Game without a crushing sacrifice! *Bxh6*!

kingside attack. Which seems pretty easy seeing how it all just seemed to flow together.} 22. **Ne5 Rfd8** {Here I wasn't sure where to put the queen. It can't move from protecting the d1 square right now because of the mate threat and seeing how I'm trying for a kingside attack I should move it to either g4 or h5. But which one?} 23. **Qh5** {I decided on Qh5! It attacks f7 and I can play something like *Bxh6-Qxh6-Nh5* and try and mate somehow later.} **Rf8** {Probably his worst move because he just blocks his King's escape route.} 24. **Bxh6 gxh6** {Just what I wanted. Now it's a forced mate. Almost anything would have been better than walking into a mate in 5 but he would still have been completely lost.} 25. **Qg4+ Kh8** 26. **Nh5 1-0** ({Black Resigned. Because of:} 26. *Nh5 Bxf2+* 27. *Kxf2 Rg8* 28. *Nxf7+ Kh7* 29. *Nf6#*)

It was a pretty fun game with a lot of tactics and even a few bad moves. But almost every game has bad moves because, well, that's Chess. It turns out that out of the 16 games that where entered into the "Best-game Contest" the judges thought my game was one of the best 2. For which I won \$200! I think for another \$200 I could play a game better than this one! But anyway, that was just one of my games from the Denker Tournament. Hope ya'll enjoyed it. Thanks a lot.



The Qualifiers for the 2010 Denker



James finds some decent competition to warm up with during his free time. (Editors Note: No word on who won the games)

Photos courtesy of Laura Smith.
<http://www.jameslarkinsmith.webs.com>

Tactic's Simplified Solutions

Puzzle #1 Tigran Petrosian vs Boris Spassky, Moscow 1966

Black can win the exchange and enter a pawn up ending with Nxf7, but did you find the stronger move?

1. Qh8+! Kxh8 2. Nxf7+

Puzzle #2. J. Polgar vs B Spassky, Budapest 1993

White wins by starting with **1. Bxg5! hxg5**. Now Rh2 appears to win the Queen, but patience is needed. (Rh2?? Rf1#) **2. Qxg5 Qh6 3. Qxh6+** (Rh2?? Rf1+) **Kxh6 4. Rh2+** (finally!) **Kg5 5. Rxc7, 0-1**

Puzzle #3. R. Luther vs D. Eckert

When Doug and I originally looked at this position all we could see was 1.Ne6? Bxe6 2. Rxh6+ Kg7 and Black wins.... However by changing the move order to.... **1.Rxh6+!! Nxh6 2.Ne6 Bxe6 3.Qxh6+ Kg8 4.Qxg6+ Kh8 5.0-0-0+**- This hit me as I was driving home from the tournament!

Puzzle #4 A. Alekhine vs E. Colle Paris 1925

1.Qxd7!! The Queen occupies the g5 square which keeps Black from playing g5 to escape. **1...Rxd7 2.Re8+ Kh7 3.Rcc8 Rd8 4.Rexd8!** [4.Rcxd8? Qc1+ 5.Kg2 g5] **1-0**



James Smith



Jacob Smith

Junior Grand Prix Standings Missouri's Top Five

Player:	JGP pts	Nat. Standing
James L. Smith	180	5th
Margaret Hua	115	t-26th
Jacob L Smith	95	
Joel Stebbins	85	
Jason Zhou	85	

The Junior Grand Prix, sponsored by Chess Magnet School, (www.chessmagnet.school.com), is a USCF nation wide program. Scholastic players are awarded JGP points by playing opponents 100 rating points or higher than themselves. Five points are awarded for a draw, and ten points are awarded for a win.



Margaret Hua



Joel Stebbins



RECENT GAMES FROM MISSOURI CHESS PLAYERS

Slav Defense

Columbia Chess Club Tournament
W: Ed Hollander
B: Mark Johnson

Annotations by Mark Johnson: 1 d4 d5 2 c4 c6 3 cxd4 cxd4 4 Nf3 Nf6 5 Nc3 e6 6

Bf4 a6 7 e3 Bd6 8 Ne5 0-0 9 Bd3 Nc6 10 0-0 Bxe5 11 Bxe5 Nxe5 12 dxe5 Nd7 13 f4 Qb6 14 Qe2 Nc5 15 Bc2 Bd7 16 a4 Rac8 17 a5 Qd8 18 b4 Ne4 19 Rfc1? Nxc3 20 Qh5 Ne4 21 Bd3 h6 22 Rcb1 Rc3 23 Qe2 Qc7 24 b5 Bxb5 25 Bxb5 axb5 26 g4 Qc5 27 Rxb5 Qa7 (I didn't like 27...Qxe3 QxQ RxQ RxP and white has a nice passed a pawn with two rooks well placed to support its advance. I felt the threat of Qxe3 was stronger than the actual move itself here so I played Qa7 to protect my b pawn and still keep the threat on e3.) 28 Rb6 Rfc8 29 Qb2 R8c7 30 a6 bxa6 (if 31 Raxa6 Qxa6 Rxa6 Rc1+ followed by Rc2+ re-gaining the queen for rook. if 31 Rbxa6 Qxe3+) 31 Rb8+ Kh7 32 Qb4 Qxe3+ 33 Kg2 Qf2+ (after 34 Kh1 its mate in three on the back rank so my oppo-nent resigned) 0-1

Queen's Gambit

Missouri Amateur Championship
W: Ken West (1263)
B: Michael Yin (1517)

1.d4 d5 2.Nf3 Nf6 3.e3 Bf5 4.c4 e6 5.Qb3 b6 6.Nc3 c5 7.cxd5 exd5 8.Bb5+

Nfd7 9.Qxd5 Nc6 10.Bxc6 Rc8 11.Ne5 Be6 12.Bxd7+ Qxd7 13.Nxd7 Bxd5 14.Nxf8 Kxf8 15.Nxd5 cxd4 16.exd4 Rd8 17.Nc3 Rxd4 18.Be3 Rd7 19.0-0 1-0

Queen's Gambit

Missouri Amateur Championship
W: Jason Zhou (1350)
B: David Askin (1798)

1.d4 d5 2.c4 c6 3. Nc3 e6 4.cxd5 exd5 5.Nf3 Nf6 6.Bf4 Be7 7.e3 0-0 8.Bd3 Bg4

9.0-0 Nbd7 10.h3 Bh5 11.Be2 Re8 12.Ne5 Bxe2 13. Qxe2 Nxe5 14.Bxe5 Bd6 15.Bxd6 Qxd6 16.a3 Ne4 17.Nxe4 Rxe4 18.f3 Re6 19.Qd3 Rae8 20.Rfe1 Qe7 21.e4 dxe4 22.fxe4 Rxe4 23.Rxe4 Qxe4 24.Qd2 Qd5 25.Qf4 Rd8 26.Re1 g6 27.Rd1 c5 28.Qc7 cxd4 0-1

Petroff Defense

Missouri Amateur Championship
W: Ashwath Kumar (1212)
B: Dennis Humphries (1770)

1.e4 e5 2.Bc4 Nf6 3.Nf3 Nxe4 4.Nc3 Nd6 5.Bb3 f6 6.d3 Nc6 7.0-0 Na5

8.Nxe5 Nxb3 9.Qh5+ g6 10.Nxg6 hxg6 11.Qxg6+ Nf7 12.Re1+ Be7 13.Nd5 Nxa1 14.Bh6 Nxc2 15.Nxf6# 1-0

French Defense Exchange

Missouri Amateur Championship
W: Ed Baur (1500)
B: Sean Trani (1457)

1.e4 e6 2.d4 d5 3.exd5 exd5 4.Bd3 Nf6 5.Nf3 Be7 6.c3 Qd6 7.Be3 Be6

8.Nbd2 Nbd7 9.Qc2 0-0-0 10.c4 c6 11.c5 Qb8 12.b4 Ng4 13.b5 Nxe3 14.fxe3 Rdg8 15.bxc6 bxc6 16.Rb1 Qa8 17.Ba6+ Kc7 18.Rb7+ Kd8 19.0-0 Nb8 20.Ne5 f6 21.Rxb8+ Qxb8 22.Nxc6+ Kd7 23.Nxb8+ Rxb8 24.Rb1 Rhd8 25.Qa4+ 1-0

Kan Sicilian

Missouri Amateur Championship
W: Roger Schmidt (1297)
B: Tim Nesham (1751)

1.e4 c5 2.Nf3 e6 3.Nc3 a6 4.d4 cxd4 5.Nxd4 b5 6.Bd3 Qb6 7.Be3 Bc5

8.Nce2 Nc6 9.c3 b4 10.0-0 Nf6 11.Qd2 Ng4 12.Nc2 Bxe3 13.Nxe3 Nxe3 14.fxe3 a5 15.cxb4 axb4 16.b3 0-0 17.Nf4 Ne5 18.Be2 Bb7 19.Bf3 Rfc8 20.Rfc1 f5 21.Rxc8+ Rxc8 22.Nd3 Nxd3 23.Qxd3 Rc3 24.Qxd7 Qxe3+ 25.Kh1 Rc1+ 26.Rxc1 Qxc1+ 27.Qd1 Qxd1+ 28.Bxd1 Bxe4 29.Be2 Bb1 30.Bc4 Kf7 31.Kg1 Ke7 32.Kf2 e5 0-1

Nimzo Indian Defense

Missouri Amateur Championship
W: Grant Nunn (1501)
B: Michal O'Neil (1131)

1.d4 Nf6 2.c4 e6 3.Nc3 Bb4 4.a3 Bxc3+ 5.bxc3 c6 6.f3 Qc7 7.Nh3 b5

8.cxb5 cxb5 9.Qc2 Nd5 10.e4 Qxc3+ 11.Qxc3 Nxc3 12.Bd2 Na4 13.Bxb5 Nb6 14.Ke2 a6 15.Bd3 Nc6 16.Rab1 Nxd4+ 17.Ke3 Nc4+ 18.Kxd4 Nxd2 19.Rb2 Nxe4 20.fxe4 0-0 21.Rc1 Rd8 22.Rc7 d5 23.e5 Rd7 24.Rbb7 Bxb7 25.Rxd7 Bc6 26.Rc7 Bb5 27.Bxb5 axb5 28.Rc3 h6 29.Kc5 Rc8+ 30.Kb4 Rc4+ 31.Rxc4 dxc4 32.Kxb5 c3 33.Nf2 Kf8 34.a4 Ke8 35.Kb6 Kd7 36.Kb7 f6 37.a5 fxe5 38.Nd3 e4 39.Nc1 c2 40.a6 g5 41.a7 h5 42.a8Q Kd6 43.Qd8+ Kc5 44.Qxg5+ Kd4 45.Qd2+ 1-0

Semi-Slav Defense

Missouri Amateur Championship
W: Abishek Mallela (2131)
B: Thomas Gaul (1749)

1.d4 e6 2.c4 d5 3.Nf3 c6 4.e3 Nf6 5.Nc3 Bb4 6.Bd2 0-0 7.Bd3 Nbd7 8.Qc2

Re8 9.a3 Bf8 10.Ne5 g6 11.f4 Bg7 12.0-0 a6 13.c5 Nf8 14.b4 N6d7 15.a4 f6 16.Nxd7 Bxd7 17.g4 e5 18.f5 e4 19.Be2 Qc8 20.fxg6 Nxg6 21.h3 f5 22.Qd1 f4 23.exf4 Bxd4+ 24.Kh2 Qc7 25.Kh1 Rf8 26.f5 Qg3 27.Bf4 Qxh3+ 28.Bh2 Nh4 0-1

Queen's Gambit Declined

Missouri Amateur Championship
W: Al Howlett (1912)
B: Jason Zhou (1350)

1.Nf3 d5 2.d4 Nf6 3.e3 e6 4.c4 dxc4 5.Bxc4 c5 6.Nc3 Be7 7.0-0 0-0 8.Qe2 Nc6

9.Rd1 Qc7 10.a3 a6 11.dxc5 Bxc5 12.b4 Be7
13.Bb2 Bd7 14.Rac1 b5 15.Ba2 Qb7 16.Bb1 Rfd8
17.Ng5 Rac8 18.Qf3 Qb8 19.Nce4 Ne5 20.Qh3 h6
21.Nxf6+ Bxf6 22.Ne4 Be7 23.Qg3 f6 24.f4 Rxc1
25.Rxc1 Bc6 26.fxe5 Bxe4 27.Bxe4 f5 28.Bb1 Qb6
29.Bd4 Qb7 30.Qg6 Qd7 31.Bxf5 Bf6 32.Qh7+ 1-0

French Defense

Missouri Amateur Championship

W: Micheal Yin (1517)

B: Greg Carlson (1323)

1.e4 e6 2.d4 d5

3.Nc3 dxe4 4.Nxe4

Nc6 5.Nf3 h6 6.Be3

Nf6 7.Nxf6+ Qxf6

8.Bd3 Bd6 9.0-0 0-0 10.Re1 Bf4 11.Bxf4 Qxf4

12.c3 Qf6 13.Qc2 a6 14.Nd2 b5 15.Ne4 Qd8

16.Nc5 Na5 17.b3 c6 18.Rad1 Qc7 19.Qe2 Nb7

20.Nxb7 Bxb7 21.Be4 Rac8 22.c4 b4 23.Qe3 Qb6

24.Rc1 Rfd8 25.Red1 a5 26.Bf3 Rc7 27.Rc2 Rcd7

28.Rcd2 Qc7 29.g3 Rb8 30.d5 cxd5 31.cxd5 exd5

32.Bxd5 Bxd5 33.Rxd5 Rxd5 34.Rxd5 Rd8 35.Rc5

Qa7 36.Rc1 Qd7 37.Rc5 a4 ½-½

Queen's Gambit Accepted

Missouri Amateur Championship

W: Doug Howe (1555)

B: Jason Ding (1200)

1.d4 d5 2.c4 dxc4

3.Nc3 Nc6 4.d5 Ne5

5.e4 Nf6 6.f4 Ng6

7.Nf3 Bg4 8.Bxc4 e6

9.0-0 Be7 10.e5 Nd7 11.dxe6 fxe6 12.Qb3 Nc5

13.Qc2 0-0 14.h3 Bf5 15.Qe2 Nd3 16.Ng5 Nc5

17.Be3 Bxg5 18.fxg5 Nd7 19.g4 Bxg4 20.Qxg4

Ndx5 21.Qxe6+ Kh8 22.Rad1 Qe8 23.Rxf8+ Qxf8

24.Rf1 Qe8 25.Qxe8+ Rxe8 26.Bd5 c6 27.Be4 a6

28.Bxg6 hxg6 29.Bd4 Nd3 30.Rf7 Rg8 31.Rxb7 c5

32.Bf2 Rf8 33.Ne4 c4 34.Bd4 Rg8 35.Nc5 Nxc5

36.Bxc5 1-0

Queen's Pawn Opening

Missouri Amateur Championship

W: Mark Ferber (2061)

B: Spencer Finegold (1964)

1.d4 d5 2.Nf3 Nf6

3.Bf4 c6 4.Nc3 Bf5

5.e3 e6 6.Be2 Be7

7.Nh4 0-0 8.Nxf5

exf5 9.0-0 Nbd7 10.a3 Ne4 11.Nxe4 fxe4 12.c4

dxc4 13.Bxc4 Nb6 14.Ba2 Nd5 15.Bg3 Bd6 16.

Bxd5 cxd5 17.Qb3 Bxg3 18.hxg3 Qd7 19.Rac1

Rfc8 20.Rc5 Rxc5 21.dxc5 Rc8 22.Qc3 Qc6 23.Rc1

f6 24.Qd4 a6 25.b4 Rd8 26.Kf1 Rd7 27.Ke1 h6

28.Qb2 Kf7 29.Qb3 Qe6 30.Rd1 Qe5 31.Rd4 h5

32.Qa4 Qc7 33.Qd1 Qe5 34.a4 Ke6 35.Kf1 g6 36.

Qb3 f5 37.b5 Qc7 38.Qc3 Rh7 39.Rb4 a5 40.b6

Qb8 41.Rb5 h4 42.c6 hxg3 43.c7 Qc8 44.fxg3

Rh1+ 45.Kf2 Rd1 46.Rxa5 Rd3 47.Ra8 Rd2+

48.Ke1 1-0

King's Indian Defense

Missouri Amateur Championship

W: Abishek Mallela (2131)

B: Grant Nunn (1501)

1.d4 Nf6 2.Nf3 g6

3.c4 Bg7 4.Nc3 0-0

5.e4 d6 6.h3 e5 7.d5

Nbd7 8.Be3 Ne8

9.g4 c6 10.dxc6 bxc6 11.c5 d5 12.exd5 cxd5 13.c6
Nb6 14.Bc5 Nd6 15.Nb5 e4 16.Bxd6 exf3 17.Bxf8
Qe8+ 18.Kd2 Qxf8 19.a3 Bxb2 20.Rb1 Qg7
21.Qb3 Be5 22.Qxf3 d4 23.Nxa7 Rxa7 24.Rxb6
Bc7 25.Rb3 Qe5 26.Bc4 Qe7 27.Kc2 Bd6 28.Rhb1
Kg7 29.Qd5 Rxa3 30.Rxa3 Bxa3 31.Qxd4+ Kh6
32.Qe3+ Kg7 33.Qxe7 Bxe7 34.Rb8 Be6 1-0

King's Indian Attack

Missouri Amateur Championship

W: David Askin (1798)

B: Barry Manthe (2113)

1.Nf3 f5 2.e4 fxe4

3.Ng5 e6 4.d3 e3

5.Bxe3 Be7 6.d4 Nc6

7.c3 Nf6 8.Bd3 g6

9.Nxh7 Nxh7 10.Bxg6+ Kf8 11.Qh5 Bf6 12.Bxh7

Ke7 13.Bg5 Qf8 14.Qh4 e5 15.0-0 d6 16.Re1 Be6

17.dxe5 Nxe5 18.Bxf6+ Qxf6 19.Qxf6+ Kxf6

20.Bc2 Rag8 21.Nd2 d5 22.f4 Ng4 23.Nf3 Rg7

24.h3 Nh6 25.Ng5 Bd7 26.Re5 Rhg8 27.Rae1 Rxg5

28.fxg5+ Rxg5 29.Rxg5 Kxg5 30.Re7 Bc6 31.Rxc7

Kf4 32.Kf2 Ng8 1-0

Unusual Openings

Missouri Amateur Championship

W: Mario Bartocci (1550)

B: Alex Esposito (1850)

1.d4 e6 2.a3 f5 3.Nf3

Nf6 4.e3 b6 5.c4 Bb7

6.Nc3 Bd6 7.b4 0-0

8.c5 Be7 9.Bb2 Qe8

10.g3 Qh5 11.Bg2 g5 12.Qe2 a5 13.0-0-0 axb4

14.axb4 Na6 15.b5 Nb4 16.Rd2 bxc5 17.Ne1 Qxe2

18.Nxe2 Bxg2 19.Nxg2 Ne4 20.Nc3 Nxd2 21.Kxd2

cxd4 22.exd4 Na2 23.f4 Bb4 24.fxg5 Nxc3 25.Bxc3

Ra2+ 26.Kd3 Bxc3 27.Nf4 Bb4 28.Kc4 Bd6

29.Nd3 Rfa8 30.Nc5 Bxc5 31.Kxc5 Ra1 0-1

Vienna Game

Missouri Amateur Championship

W: Clark Berry (706)

B: Roger Schmidt (1297)

1.e4 e5 2.Bc4 Nf6

3.Nc3 Bc5 4.Nf3 d6

5.d3 0-0 6.Bg5 c6

7.Rb1 Bg4 8.h3 Be6

9.b4 Bb6 10.Bxe6 fxe6 11.d4 exd4 12.Nxd4 Qe7

13.Na4 Nbd7 14.Nxb6 axb6 15.Rb2 Qf7 16.Bxf6

Qxf6 17.0-0 Ne5 18.b5 c5 19.Ne2 Nf3+ 20.gxf3

Qxb2 21.Qxd6 Qxb5 22.Qxe6+ Kh8 23.Nf4 Rxf4

24.e5 Re8 25.Qxe8+ Qxe8 26.Rd1 h6 0-1

Sicilian Dragon

Missouri Amateur Championship

W: William Nesham (1805)

B: Kenneth Thomas (2065)

1.e4 c5 2.d4 cxd4 3.c3

Nf6 4.e5 Nd5 5.cxd4

Nc6 6.Nf3 e6 7.Nc3

Nxc3 8.bxc3 d6 9.exd6

Qxd6 10.g3 Be7 11.Bg2 0-0 12.0-0 Qc7 13.Re1 Rd8

14.Ng5 h6 15.Ne4 b6 16.Bb2 Bb7 17.c4 Na5 18.Rc1

Nxc4 19.Qh5 Bd5 20.Nd2 b5 21.Nxc4 bxc4 22.Bf1 Qb7

23.Rc2 Qa6 24.Ba1 Rdc8 25.Bg2 Bxg2 26.Kxg2 Bf6

27.Re1 Qc6+ 28.Qf3 Qxf3+ 29.Kxf3 Rd8 30.Rxc4 Rd5

31.Ke4 Rad8 32.Rb1 R8d7 33.a4 g6 34.Bc3 Kg7 35.a5

Bd8 36.a6 f5+ 37.Ke3 Kf6 38.Rb7 Bb6 39.f4 g5

40.Rb4 gxf4+ 41.gxf4 Ke7 42.R4xb6 axb6 1-0

Blumenfield Defense

Springfield Park Board Open

W: Ken West (1327)

B: Grant Nunn (UNR)

1.d4 Nf6 2.Nf3 g6
3.c4 e6 4.Nc3 d6 5.e4
Be7 6.Be2 0-0 7.Bh6
Re8 8.Ng5 e5 9.dxe5

dxe5 10.Qxd8 Rxd8 11.0-0 Ng4 12.Bxg4 Bxg4
13.Nd5 Nc6 14.Nxe7+ Nxe7 15.f3 Bd7 16.Rad1 c6
17.Rd2 Be8 18.Rfd1 Rdb8 19.Nh3 f6 20.Be3 b6
21.f4 c5 22.fxe5 fxe5 23.Bh6 b5 24.Rf2 Bc6 25.Ng5
Re8 26.Rdf1 bxc4 27.Rf7 Rad8 28.Rg7+ Kh8
29.Nf7# 1-0

Dutch Defense

Springfield Park Board Open

W: Selden Trimble (1983)

B: Barry Manthe (2102)

1.d4 f5 2.Bg5 g6
3.Nc3 Bg7 4.e4 fxe4
5.Nxe4 d5 6.Ng3 c5
7.Bb5+ Nc6 8.Bxc6+

bxc6 9.dxc5 Bxb2 10.Rb1 Bc3+ 11.Bd2 Qa5 12.N1e2
Bxd2+ 13.Qxd2 Qxc5 14.0-0 Nf6 15.h3 0-0 16.Rb2
Ba6 17.Rfb1 e5 18.Qe3 d4 19.Qg5 Rae8 20.Nf4 Kf7
21.Nd3 Qe7 22.Re1 Nd7 23.Qh6 Kg8 24.f4 Bxd3
25.cxd3 Rxf4 26.Qxf4 exf4 27.Rxe7 Rxe7 28.Ne4
Ne5 29.Rb3 Nxd3 30.Nf6+ Kg7 31.Nd5 Re1+
32.Kh2 Nc5 0-1

Benko Gambit

Springfield Park Board Open

W: Ben Elliot (1251)

B: Ethan Stitch (UNR)

1.d4 Nf6 2.c4 c5 3.d5
b5 4.b3 Bb7 5.Nc3
bxc4 6.bxc4 d6 7.Qb3
Qc7 8.Rb1 Ba6 9.e4

Nbd7 10.Qc2 g6 11.f3 Bg7 12.Bd3 0-0 13.Nge2 Rab8
14.Rxb8 Rxb8 15.0-0 Ne5 16.f4 Nxd3 17.Qxd3 Nd7
18.Qh3 Bxc4 19.f5 Bxc3 20.fxg6 hxg6 21.Qxc3 Bxe2
22.Bh6 Ne5 23.Re1 Bd3 24.Re3 Rb1+ 25.Kf2 Ng4+
26.Kg3 Nxe3 27.Qg7# 1-0

Sicilian Dragon

Springfield Park Board Open

W: Christopher Neale (961)

B: Ashley Fulkerson (1150)

1.e4 c5 2.Nf3 d6 3.d4
cxd4 4.Nxd4 Nf6
5.Nc3 Bd7 6.Be2 g6
7.Be3 Bg7 8.0-0 0-0

9.Qd2 Nc6 10.Bh6 Nxd4 11.Bxg7 Nxe2+ 12.Qxe2
Kxg7 13.h4 Rc8 14.Rac1 Bc6 15.f3 e6 16.Kh2 Nh5
17.Qf2 h6 18.Rce1 Rh8 19.Nd1 g5 20.g4 Nf4 21.h5
Bb5 22.Qd4+ e5 23.Qd2 Bxf1 24.Rxf1 Rc6 25.c3
Qc7 26.Ne3 a5 27.Nf5+ Kf6 28.Ne3 Rc5 29.Rd1 Ke6
30.Nf5 d5 31.exd5+ Rxd5 32.Qc2 Rxd1 33.Qxd1 f6
34.Qb3+ Nd5 35.c4 Nf4 36.c5+ Nd5 37.Qc4 b6 38.c6
Rh7 39.Kg2 Qb8 40.Ne3 Qd8 41.Nc2 Re7 42.Qe4
Nf4+ 43.Kg3 Qc7 44.Nd4+ Kd6 45.Nb5+ Ke6 46.
Nxe7+ Rxe7 47.Qf5+ Kd6 48.Qxf6+ Kd5 49.a3 Rxc6
50.Qf7+ Kd6 51.Qg7 Kd5 52.Qg8+ Kd6 53.Kf2
Rc2+ 54.Ke1 Rxb2 55.Qf8+ Kd5 56.Qxh6 Nh3
57.Qf6 Nf4 58.h6 Re2+ 59.Kd1 Kc4 60.Qc6+ Kd3
61.Qb5+ Kc3 62.Qxe2 Nxe2 63.Kxe2 b5 64.h7 0-1

French Advanced

Springfield Park Board Open

W: Ron Luther (2006)

B: Tres Roring (1960)

1.e4 e6 2.d4 d5
3.e5 c5 4.c3 Nc6
5.g3 Qb6 6.Ne2
Bd7 7.Bh3 0-0-0

8.0-0 h5 9.a4 h4 10.g4 f6 11.dxc5 Bxc5 12.b4 Bf8
13.Be3 Qc7 14.exf6 Nxf6 15.Na3 Ne5 16.Nd4 Nc4
17.Nab5 Nxe3 18.fxe3 Qe5 19.Qe2 a6 20.Nf3 Qe4
21.Nbd4 e5 22.Nd2 Qg6 23.Nf5 Bxf5 24.Rxf5 Bd6
25.g5 Kb8 26.Qg2 Nh7 27.Nf3 e4 28.Ne5 Bxe5
29.Rxe5 Rhe8 30.Rf5 Rf8 31.Raf1 Rxf5 32.Bxf5
Qxg5 33.Bxh7 Qxe3+ 34.Qf2 Qxc3 35.Qb6 Qc7
36.a5 g5 37.Bg6 Rc8 38.Qd4 Qd6 39.Bxe4 Rc4
40.Qh8+ Rc8 41.Qd4 Rc4 42.Qb6 Qxb6+ 43.axb6
dxe4 44.Rf8+ Rc8 45.Rf5 Re8 46.Rxg5 Kc8
47.Rc5+ Kd7 48.Rc7+ Ke6 49.Kf2 e3+ 50.Ke2
Kd5 ½-½

Old Indian Defense

Springfield Park Board Open

W: Selden Trimble (1983)

B: Jacob Smith (1512)

1.d4 d6 2.c4 Nd7
3.Nf3 e5 4.dxe5
dxe5 5.Nc3 Ngf6
6.Bg5 Be7 7.Qc2 0-

0 8.Rd1 Qe8 9.Nb5 Bb4+ 10.Bd2 Bxd2+ 11.Rxd2
e4 12.Nxc7 Qd8 13.Nxa8 exf3 14.exf3 Re8+ 15.
Be2 Qa5 16.0-0 Nf8 17.b4 Qe5 18.Rfd1 Qb8 19.c5
Qxa8 20.Bb5 Bd7 21.a4 a6 22.Bxd7 N8xd7 23.h3
Qc8 24.Qf5 Nf8 25.Qxc8 Rxc8 26.Rd8 Rxd8 27.
Rxd8 N6d7 28.Rc8 g6 29.c6 bxc6 30.Rxc6 Nb8
31.Rc8 Nbd7 32.a5 Kg7 33.Ra8 Kf6 34.Rxa6+
Ke7 35.Rc6 Ne6 36.a6 Nb8 37.Rxe6+ Kxe6 38.a7
Nc6 39.a8Q Nxb4 40.Qe4+ 1-0

Philidor's Defense

Springfield Park Board Open

W: Bob Howe (1710)

B: Chris Neale (958)

1.e4 e5 2.Nf3 d6
3.d4 exd4 4.Nxd4
Nf6 5.Nc3 c6 6.g3
Be7 7.Bg2 0-0 8.0-

0 Bd7 9.h3 Qc8 10.Kh2 b5 11.Ndx5 cxb5 12.e5
Bc6 13.exf6 Bxg2 14.fxe7 Qxh3+ 0-1

English Opening

Springfield Park Board Open

W: Benjamin Elliot (1251)

B: Tres Roring (1953)

1.d4 d5 2.c4 e6
3.cxd5 exd5 4.Nf3
c6 5.g3 Nf6 6.Bg2
Bd6 7.0-0 Bf5

8.Nc3 0-0 9.Bg5 Nbd7 10.Nh4 Bg4 11.f3 Be6
12.e4 dxe4 13.fxe4 Be7 14.d5 Bg4 15.Bf3 Bxf3
16.Qxf3 Nxd5 17.Bxe7 Nxe7 18.Rad1 Qb6+
19.Qf2 Rad8 20.Nf3 Qxf2+ 21.Rxf2 Nb6 22.Rfd2
Rxd2 23.Rxd2 Ng6 24.a4 a5 25.b3 f6 26.Kf2 Kf7
27.Ke3 Ne5 28.Nxe5+ fxe5 29.Nb1 Ke7 30.Na3
Rd8 31.Rxd8 Kxd8 32.Kd3 Kc7 33.Nc4 Nxc4
34.Kxc4 Kd6 35.g4 g5 36.b4 axb4 37.Kxb4 b6
38.h3 h6 0-1

Queen's Gambit Accepted
Missouri Amateur Championship
W: Dennis Hourcade (1447)
B: Peter Rupprecht (1724)

1.d4 d5 2.c4 e6 3.Nf3
dxc4 4.e4 b5 5.a4 Nf6
6.e5 Nd5 7.axb5 cxb5
8.b3 Nb6 9.bxc4 bxc4
10.Bxc4 Nxc4 11.Qa4+ Qd7 12.Qxc4 Bb7 13.Ng5
e6 14.0-0 Be7 15.Nc3 0-0 16.Qd3 Bxg5 17.Bxg5
Nc6 18.Rfd1 h6 19.Bxh6 gxh6 20.Ne4 f5 21.Nf6+
Rxf6 22.exf6 Nb4 23.Qg3+ Kh7 24.Rac1 Nd5
25.Re1 Rg8 26.Qe5 Re8 27.Re2 Qf7 28.Rec2 Nxf6
29.Rc7 Re7 30.Rxe7 Qxe7 31.Rc7 Nd7 32.Qb5 Bc8
33.Rxc8 Nb6 34.Re8 Qa3 35.g3 Qa1+ 36.Kg2
Qxd4 37.Rxe6 Kg7 38.Qxf5 Qd5+ 39.Qxd5 Nxd5
40.Ra6 Nf6 41.f3 Kg6 42.Rxa7 h5 43.h3 Kg5
44.Ra5+ Kg6 45.Ra6 Kf5 46.Kf2 Ke5 47.Rxf6
Kxf6 48.Ke3 Ke5 49.g4 h4 50.f4+ Kf6 51.Ke4 Ke6
52.g5 Kf7 53.f5 Kg7 54.g6 Kg8 55.f6 Kf8 56.Kf5
Kg8 57.Ke6 Kf8 58.f7 1-0

French Defense
Missouri Amateur Championship
W: Jonah Smith (985)
B: Tom Gaul (1749)

1.e4 e6 2.Nf3 d5 3.d3
Bc5 4.c3 dxe4 5.dxe4
Bxf2+ 6.Ke2 Qxd1+
7.Kxd1 Bd7 8.Ke2
Bb6 9.Na3 Nc6 10.Be3 Bxe3 11.Kxe3 0-0-0 12.Rd1
Nf6 13.c4 Ng4+ 14.Ke2 f5 15.h3 Nf6 16.e5 Ne4
17.Ke3 Nb4 18.Rg1 Bc6 19.Nd4 g5 20.Be2 Rhe8

21.Bh5 Re7 22.Nab5 Bxb5 23.Nxb5 Nc2+ 24.Ke2
Ng3+ 25.Kf3 Rxd1 26.Rxd1 Nxb5 27.Nxa7+ Kb8
28.Nb5 b6 29.Rd8+ Kb7 30.Rg8 Ng7 31.Rh8 h5
32.Rh7 Ne1+ 33.Kf2 Nd3+ 34.Ke3 Nxe5 35.Kd4
Ng6 36.g3 f4 37.gxf4 Nf5+ 38.Kd3 Rxh7 39.fxf5
Rd7+ 40.Ke2 Nf4+ 41.Kf3 Nxb3 42.g6 Rg7 43.b4
Rxc6 44.Nc3 Ng1+ 45.Ke4 Rg3 46.Na4 Re3+
47.Kf4 Nh3# 0-1

Colle Zukertort
Missouri Amateur Championship
W: Greg Carlson (1323)
B: Richard Berry (1638)

1.d4 Nf6 2.Nc3 g6
3.Nf3 Bg7 4.b3 d5
5.h3 b6 6.e3 0-0
7.Rb1 Bb7 8.Ba3 a6
9.Bd3 Nc6 10.0-0 b5 11.Ne2 b4 12.Bb2 a5 13.a4
Ba6 14.Ng3 Qd6 15.Bxa6 Rxa6 16.Qd3 Rb6
17.Rfd1 Rc8 18.Ba1 Nd7 19.Qe2 Re8 20.Qd3 e6
21.Ne2 Ne7 22.Ng3 Nf5 23.Nxf5 exf5 24.Rbc1 Qe6
25.Ng5 Qf6 26.Nf3 g5 27.Nh2 h5 28.c4 g4 29.hxg4
fxg4 30.cxd5 Qg5 31.Rc6 Qxd5 32.Rxb6 Nxb6
33.Rc1 Qg5 34.Rc5 Qh6 35.e4 Qg6 36.Rf5 Nc8
37.Rxa5 Rxe4 38.Nf1 Re1 39.Qxg6 fxg6 40.Ra8
Rxa1 41.Rxc8+ Kh7 42.Rxc7 Kh6 43.Rc4 Rd1
44.Rxb4 g3 45.fxg3 Bxd4+ 46.Kh2 Bf2 47.g4 Rxf1
48.gxh5 gxh5 ½-½

MCA BOARD OF DIRECTORS & OFFICERS 2010-2011

REGION 1—SAINT LOUIS

Edward C. Baur: (Membership Chair) 7138 Lindenwood, St. Louis, MO 63109. 314-645-2897.

<ecbaur@gmail.com>

Tony Rich: 6423 Towne Woods Dr. Saint Louis, MO 63129. 314-952-4183

<trich@saintlouischessclub.org>

Bob Howe: (Secretary) 311 E. Walnut, Pacific, MO 63069 636-234-7928.

<bhowe@yahoo.com>

REGION 2—KANSAS CITY

CJ Armenta: 12734 Richmond, Grandview, MO 64030 816-763-4136

<carmenta@dc.rr.com>

Bruce Cantwell: (Vice President) 711 S. Prairie, Apt 3. Liberty, MO 64068

<fordmank@yahoo.com>

John Sutton: 3608 Randall Drive, Independence, MO 64055.

816-478-3946. <jsutton@indep.k12.mo.us>

REGION 3—REST OF STATE

Timothy V. Campbell: 6104 E. Sharon Lane, Columbia, MO 65202. 573-696-0082.

<TRJCamp@aol.com>

Thomas R. Rehmeier (President, Webmaster): 5217 Denice Street, Jefferson City, MO 65109.

573-291-0852. <T.Rehmeier@yahoo.com>

Nathan Swinger: 1301 Old Highway 63S., 203 Columbia, MO 65201

<nds989@mail.mizzou.edu>



Missouri State Champions



Missouri State Champion
Grand Master Benjamin Finegold



Missouri Open Champion
Jialin Ding



Amateur Champion
Alex Marler & Mark Ferber



Denker Champion
James Larkin Smith

2010 Class Champions



Quick Champion
Josh Frank

Master —	Ronald G. Luther
Expert	
Class A	Steven Rand
Class B	Joel Stebbins
Class C	Tha Dun
Class D	Jay Shapiro
Class E	Mark Johnson
Novice	Jason Ding



Polgar Champion
Margaret Hua

For a complete history of Missouri Champions, visit www.mochess.org & click the Champions Link.

Missouri Chess Hall of Fame



Mr. James H. Davies
Inducted: 2000



Mr. Donald Oswald
Inducted: 2001



Mr. Robert M. Jacobs
Inducted: 2002



Mr. Robert H. Steinmeyer
Inducted: 2006



Mr. Michael A. Brooks
Inducted: 2003

*Chess, like any creative activity,
can exist only through the combined
efforts of those who have creative
talent, and those who have the
ability to organize their creative
work.*



Mr. William H. Wright
Inducted: 2009



Mr. John V. Ragan
Inducted: 2008

-Mikhail Botvinnik



Mr. Selden Trimble
Inducted: 2010

Missouri Chess Association
Bulletin Editor
311 E. Walnut
Pacific, MO 63069