



## Installation Procedures

### MKV Jetta/Rabbit OEM Fog Installation Instructions

**This tutorial is provided as a courtesy by ECS Tuning.**

Proper service and repair procedures are vital to the safe, reliable operation of all motor vehicles as well as the personal safety of those performing the repairs. Standard safety procedures and precautions (including use of safety goggles and proper tools and equipment) should be followed at all times to eliminate the possibility of personal injury or improper service which could damage the vehicle or compromise its safety.

Although this material has been prepared with the intent to provide reliable information, no warranty (express or implied) is made as to its accuracy or completeness. Neither is any liability assumed for loss or damage resulting from reliance on this material. SPECIFICALLY, NO WARRANTY OF MERCHANTABILITY, FITNESS FOR A PARTICULAR PURPOSE OR ANY OTHER WARRANTY IS MADE OR TO BE IMPLIED WITH RESPECT TO THIS MATERIAL. In no event will ECS Tuning, Incorporated or its affiliates be liable for any damages, direct or indirect, consequential or compensatory, arising out of the use of this material.



## MKV Jetta/Rabbit OEM Fog Light Installation Instructions

### **Safety first:**

When performing any work on your vehicle it is important that you make safety your main concern. Properly support the vehicle with jack stands on each side. Never work under a vehicle supported only by a jack.

When working with your vehicles electrical system; always disconnect the battery! Avoid shorting any circuits, or probing around wires. Failure to follow these safety precautions, and all others, could result in irreversible damage to your vehicles electrical system, failure to start, fire, and/or personal injury.

Before you undertake this installation, it is important that you read the following instructions! Listed below are the necessary tools and skills required to complete the job. If the installation of this product seems overwhelming, please contact a qualified installer in your area.

Be aware that disconnecting your battery may require you to input your radio anti-theft code, so make sure you have it handy.

### **Tools Required:**

- T-30 Torx
- T-25 Torx
- T-20 Torx
- Phillips Screw Driver
- 8mm Socket
- 10mm Socket
- 13mm Socket
- Socket Wrench
- Coat Hanger
- Tape
- Work Light
- Grease

MKV Jetta/Rabbit OEM Fog  
Installation Instructions



**Installation Note:**

It is possible to remove the bumper with out raising the vehicle or removing the wheels. Access to the inner fender screws is gained by turning the wheel from left lock, to right lock respectively. A ¼" drive Stubby T-25 Torx bit and ¼" drive low profile ratchet is the ideal tool to use due to clearance issues. The detailed removal of the front bumper is not covered in this instruction manual.

For further information on removal of the bumper, consult your Bentley Factory Repair Manual.

We also recommend all electrical connections be lightly coated with grease as a corrosion inhibitor.

The vehicle shown in this installation is a MKV Jetta, the MKV Rabbit models will differ slightly in appearance.

**Preparation:**

Park automobile on a level, suitable working area.

Be sure to put the vehicle in park and/or engage the parking brake.

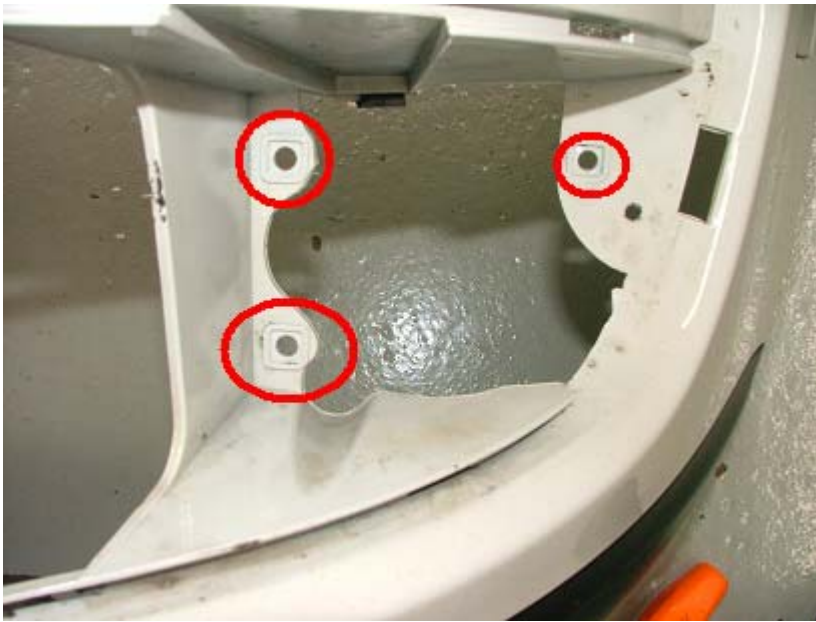
Allow the engine time to cool to ambient temperatures to avoid the possibility of burns.

MKV Jetta/Rabbit OEM Fog  
Installation Instructions



Instructions start, assuming you have the front bumper, and drivers side under dash knee panel removed.

Remove your stock left and right lower air grilles.



With the left and right air grilles removed, snap the supplied speed clip inserts in the bumper as indicated in the above picture.

MKV Jetta/Rabbit OEM Fog  
Installation Instructions



Speed clip inserts installed.



Install fog light housing with 3 supplied Phillips screws.

Upper chrome strips are switched from stock air grilles to supplied air grilles with cut outs for fog lights.

Procedure for left hand side is identical.

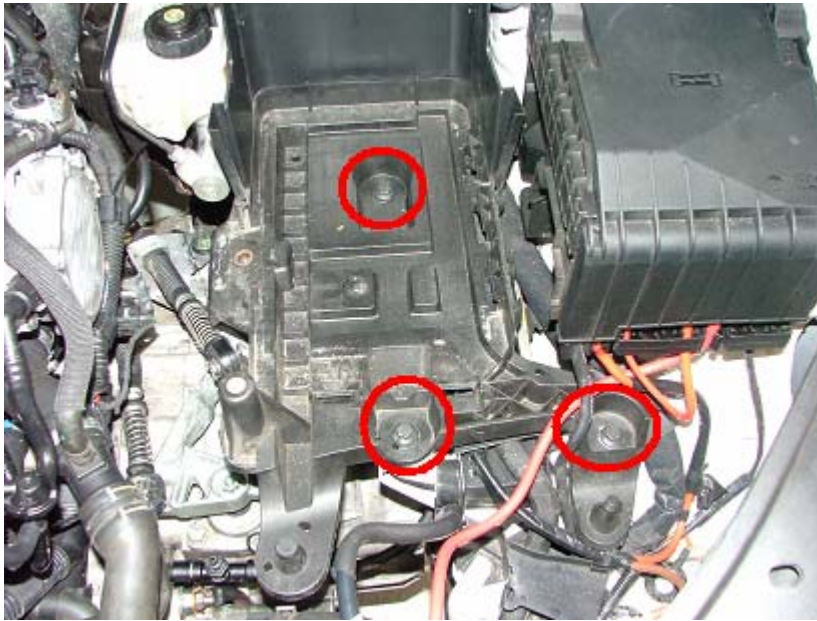
Reinstall air grilles.

MKV Jetta/Rabbit OEM Fog  
Installation Instructions



Once both fog light are installed, and both lower air grilles are in place, you are now ready to install the fog light harness.

Start by removing the battery lid, front cover, and disconnecting the battery.



Remove the (3) 10mm bolts to remove the battery tray.

MKV Jetta/Rabbit OEM Fog  
Installation Instructions



Locate the grommet as indicated above. Proceed to use a coat hanger and pull the trigger wire through to under the dash.

Route the trigger wire out of the way of any moving parts. Secure with included zip ties

MKV Jetta/Rabbit OEM Fog  
Installation Instructions



Un-clip and Remove switch.

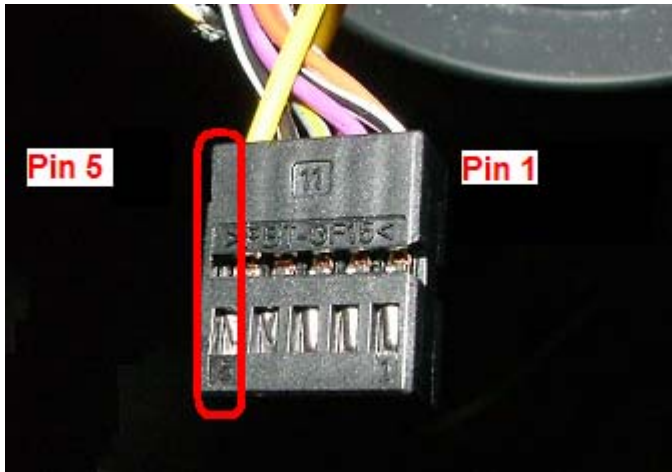
Pull trigger wire through switch hole.



Remove head light switch connector cover by using a small screw driver or pick and lifting up the small tab indicated in the above picture. Slide the connector cover off.



MKV Jetta/Rabbit OEM Fog  
Installation Instructions



Insert the small pin on the end of the trigger wire into slot 5 on the connector.

Replace connector cover, and install headlight + fog switch. (You must already have, or purchased a suitable USA Front Fog capable or a European spec switch.)

Reinstall under dash panel.

With that out of the way, we can now reinstall the battery tray, battery, and front battery cover.

Due to warranty concerns, other modifications to the vehicle, and personal preference, we do not specify a mounting location of the fog relay.

Mount the relay in a upright position in a dry area away from moving parts. Inside the rain tray, inside the bumper, as well as inside the battery box, are all viable options.

For instructional purposes, we chose the battery box as the easiest and cleanest looking location.

MKV Jetta/Rabbit OEM Fog  
Installation Instructions

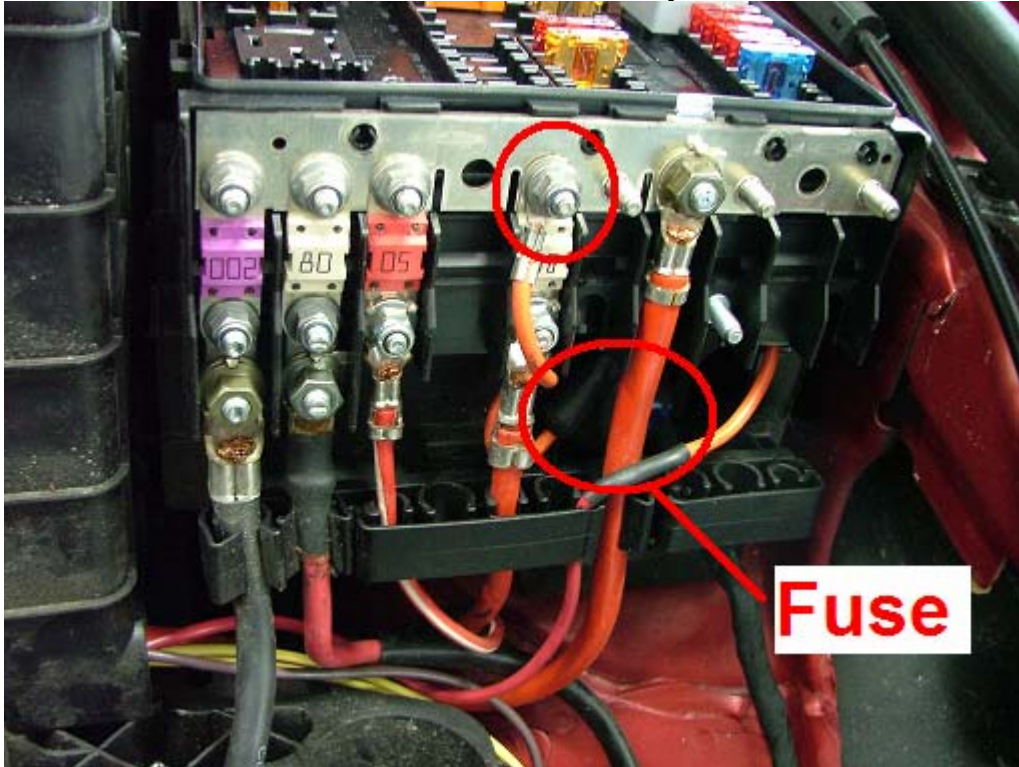


Mount the relay using the supplied 6mm bolt. If using the battery box, feed all the wires except the trigger wire under the front cover and reinstall cover and relay.

MKV Jetta/Rabbit OEM Fog  
Installation Instructions



Remove the fuse block cover next to the battery.



Route the fused wire as shown in the picture. Remove the 8mm nut indicated in the picture and connect the ring terminal of the fused wire.

MKV Jetta/Rabbit OEM Fog  
Installation Instructions



Connect the Brown Ground wire to the terminal indicated in the above picture.

Secure any loose wires with included zip ties as you deem necessary.

Route the two remaining wires down into the bumper area as shown in the above picture.

Separate the two remaining wires both (from pins 87)

The shorter of the two goes to the drivers side.

MKV Jetta/Rabbit OEM Fog  
Installation Instructions



Connect the Ring terminal on the drivers side to the post indicated in the above picture. (Drivers side only)

Route the remaining wire and connector to the passenger side of the vehicle.



MKV Jetta/Rabbit OEM Fog  
Installation Instructions



Using the included (6mm) bolt, ground the ring terminal on the passenger side to the horn bracket as shown in the above picture. We recommend all connections be lightly coated with grease as a corrosion inhibitor.

Secure as necessary with included zip ties.

Plug fog lights in while reinstalling bumper.

Take care to insure all wires are properly secured, and out of the way of moving parts. Be sure not to pinch or pull on the harness during installation or future removal.

You have completed the installation of the ECS OEM fog light kit