

Legend

- Proposed State Marine Conservation Area (SMCA)
- Proposed State Marine Park (SMP)
- Proposed State Marine Reserve (SMR = No Take)
- Proposed State Marine Recreational Management Area (SMRMA)
- South Coast Study Region Boundary

California Marine Life Protection Act (MLPA) Initiative

This map represents a marine protected area (MPA) proposal that has been submitted external from the MLPA South Coast Regional Stakeholder Group MPA planning process. This external proposal is under review; it is NOT a recommendation to the California Fish and Game Commission.

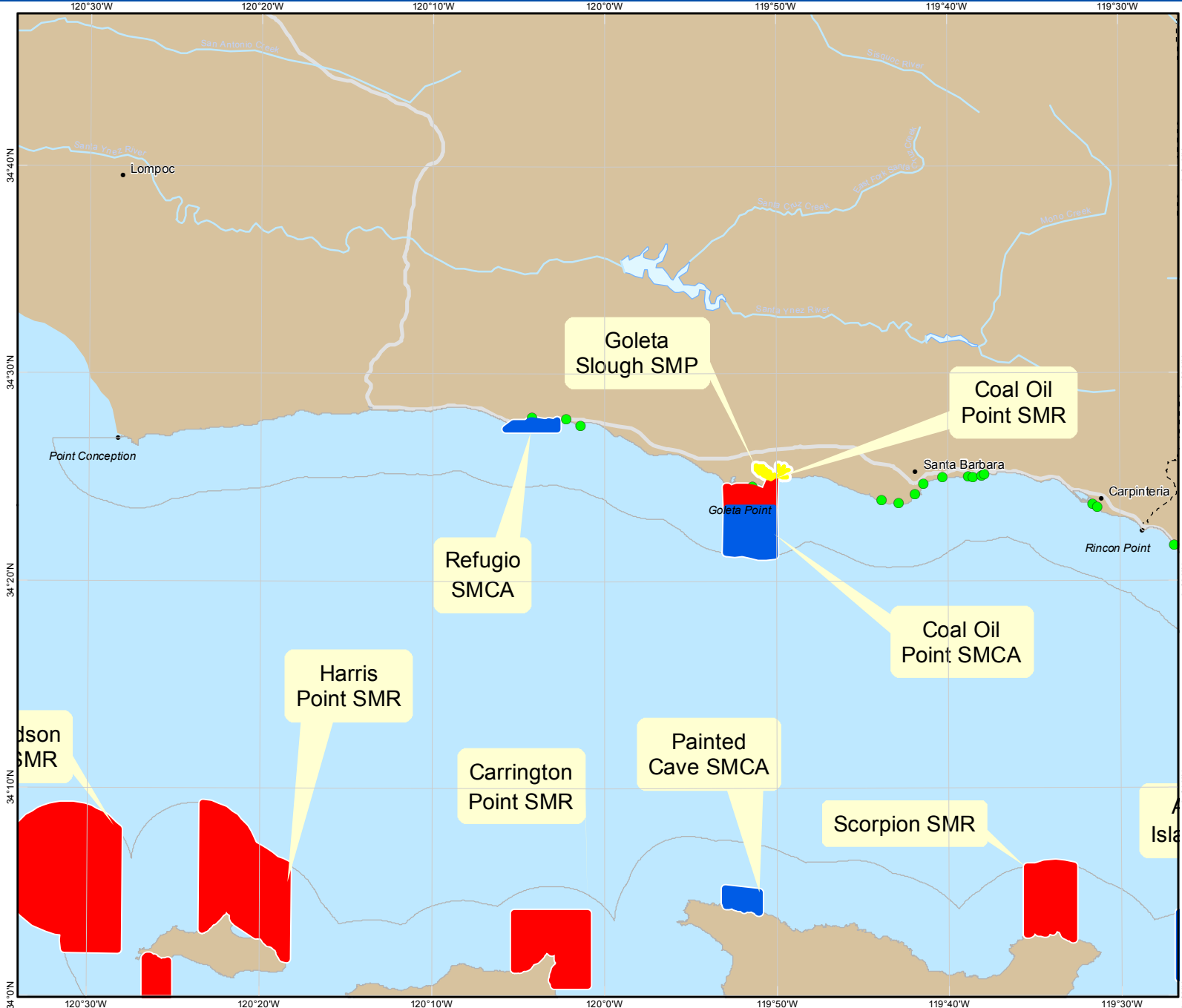
For more detailed maps please visit: www.marinemap.org/marinemap



For more detailed maps please visit: www.marinemap.org/marinemap

California Marine Life Protection Act (MLPA) Initiative

Round 1 Draft External Proposal B

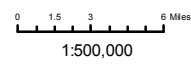


- Legend**
- Proposed State Marine Conservation Area (SMCA)
 - Proposed State Marine Park (SMP)
 - Proposed State Marine Reserve (SMR = No Take)
 - Proposed State Marine Recreational Management Area (SMRMA)
 - Coastal Access
 - South Coast Study Region Boundary

This map represents a marine protected area (MPA) proposal that has been submitted external from the MLPA South Coast Regional Stakeholder Group MPA planning process. This external proposal is under review; it is NOT a recommendation to the California Fish and Game Commission.

Projection Information:

Name: NAD 1983 California Teale Albers
Projection: Albers
Datum: North American 1983



Printing Date: 2/26/2009

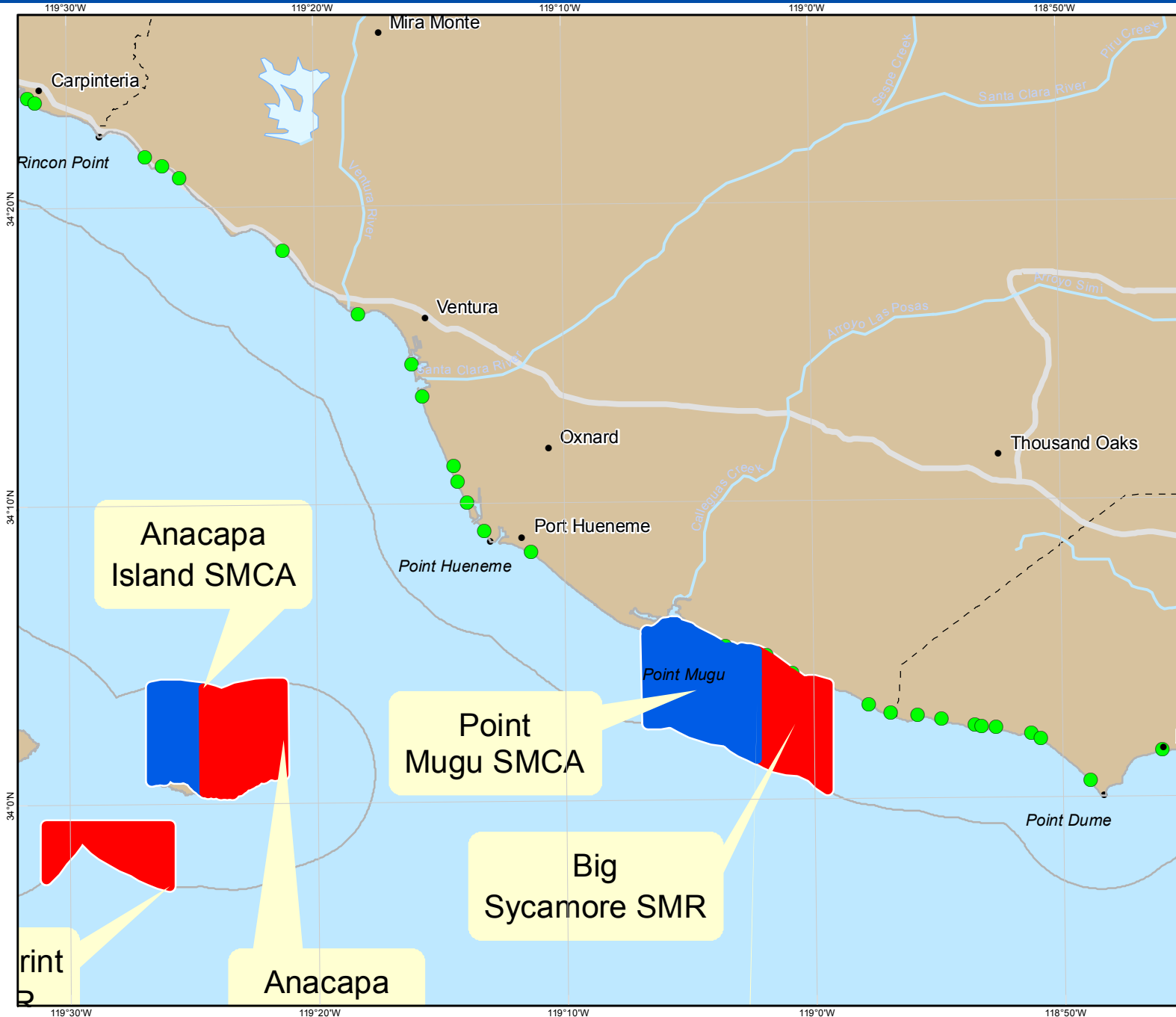
Created By:
Marine Map, Cartographic Division UCSB



For more detailed maps please visit: www.marinemap.org/marinemap

California Marine Life Protection Act (MLPA) Initiative

Round 1 Draft External Proposal B

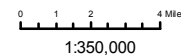


- Legend**
- Proposed State Marine Conservation Area (SMCA)
 - Proposed State Marine Park (SMP)
 - Proposed State Marine Reserve (SMR = No Take)
 - Proposed State Marine Recreational Management Area (SMRMA)
 - Coastal Access
 - South Coast Study Region Boundary

This map represents a marine protected area (MPA) proposal that has been submitted external from the MLPA South Coast Regional Stakeholder Group MPA planning process. This external proposal is under review; it is NOT a recommendation to the California Fish and Game Commission.

Projection Information:

Name: NAD 1983 California Teale Albers
Projection: Albers
Datum: North American 1983



Printing Date: 2/26/2009

Created By:

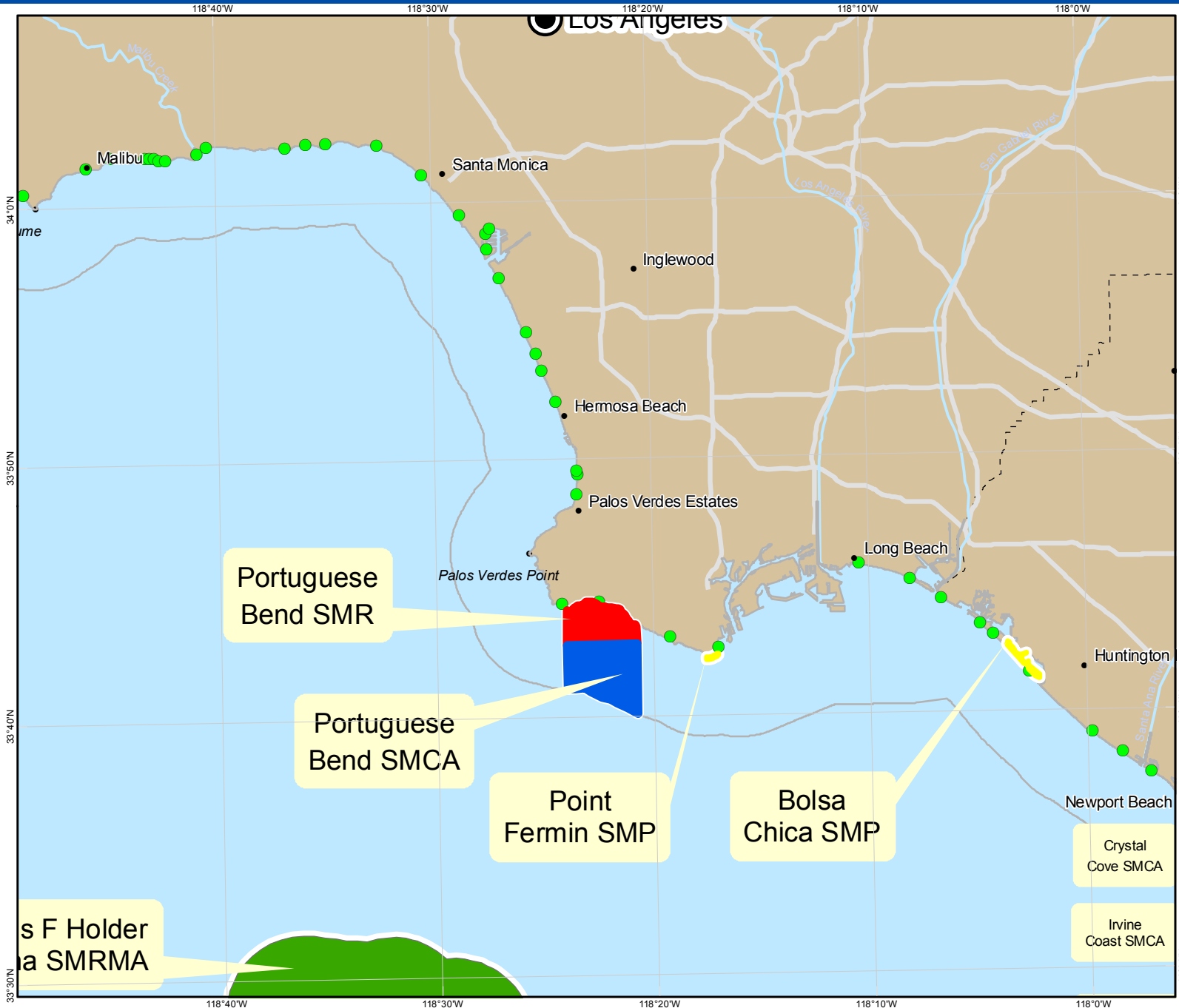
Marine Map, Cartographic Division UCSB



For more detailed maps please visit: www.marinemap.org/marinemap

California Marine Life Protection Act (MLPA) Initiative

Round 1 Draft External Proposal B

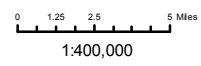


- Legend**
- Proposed State Marine Conservation Area (SMCA)
 - Proposed State Marine Park (SMP)
 - Proposed State Marine Reserve (SMR = No Take)
 - Proposed State Marine Recreational Management Area (SMRMA)
 - Coastal Access
 - South Coast Study Region Boundary

This map represents a marine protected area (MPA) proposal that has been submitted external from the MLPA South Coast Regional Stakeholder Group MPA planning process. This external proposal is under review; it is NOT a recommendation to the California Fish and Game Commission.

Projection Information:

Name: NAD 1983 California Teale Albers
Projection: Albers
Datum: North American 1983



Printing Date: 2/26/2009

Created By:
Marine Map, Cartographic Division UCSB

MLPA South Coast Study Region:

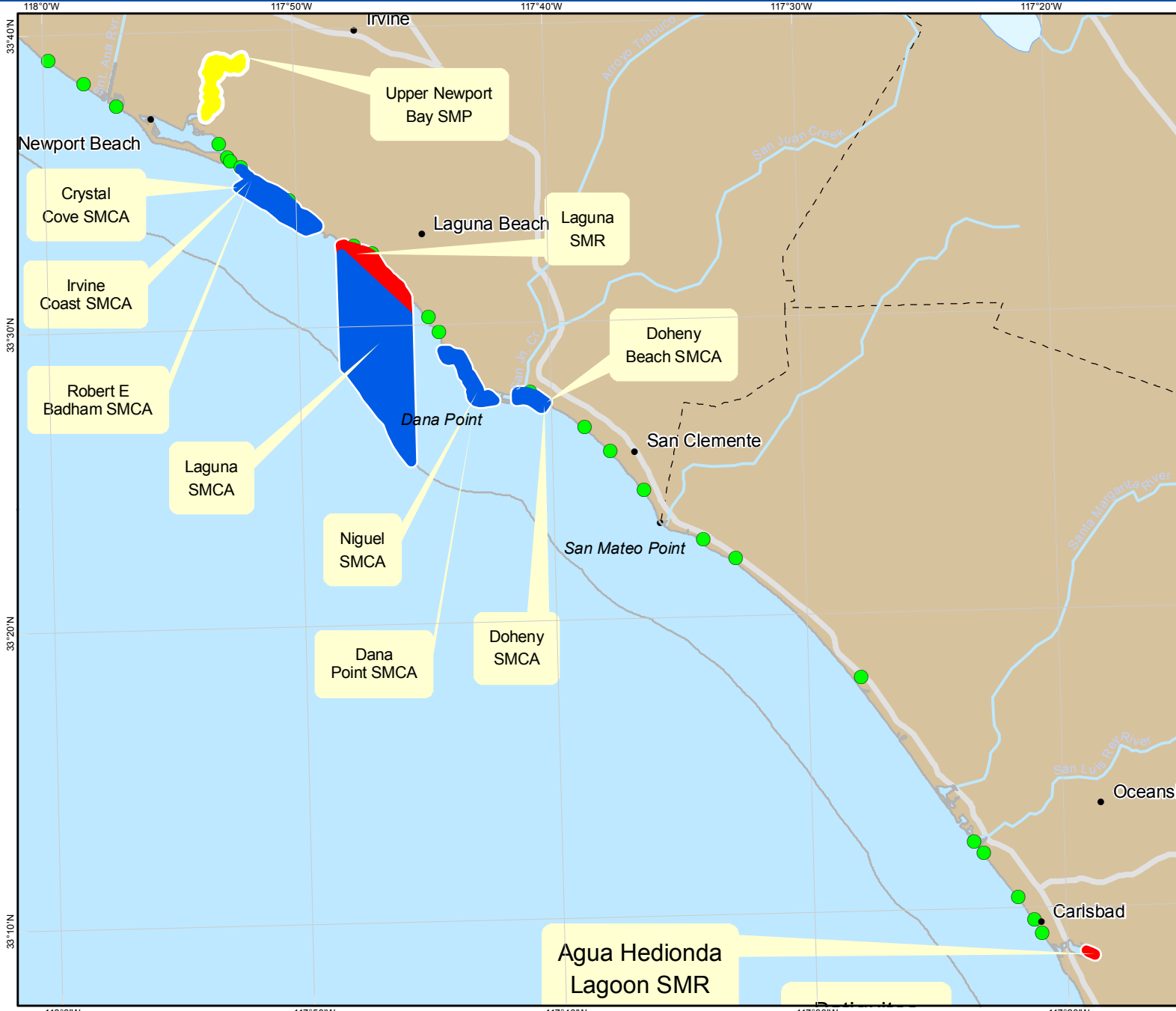
Subregion 4 - Newport Beach to Agua Hedionda



For more detailed maps please visit: www.marinemap.org/marinemap

California Marine Life Protection Act (MLPA) Initiative

Round 1 Draft External Proposal B



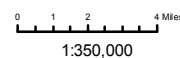
Legend

- Proposed State Marine Conservation Area (SMCA)
- Proposed State Marine Park (SMP)
- Proposed State Marine Reserve (SMR = No Take)
- Proposed State Marine Recreational Management Area (SMRMA)
- Coastal Access
- South Coast Study Region Boundary

This map represents a marine protected area (MPA) proposal that has been submitted external from the MLPA South Coast Regional Stakeholder Group MPA planning process. This external proposal is under review; it is NOT a recommendation to the California Fish and Game Commission.

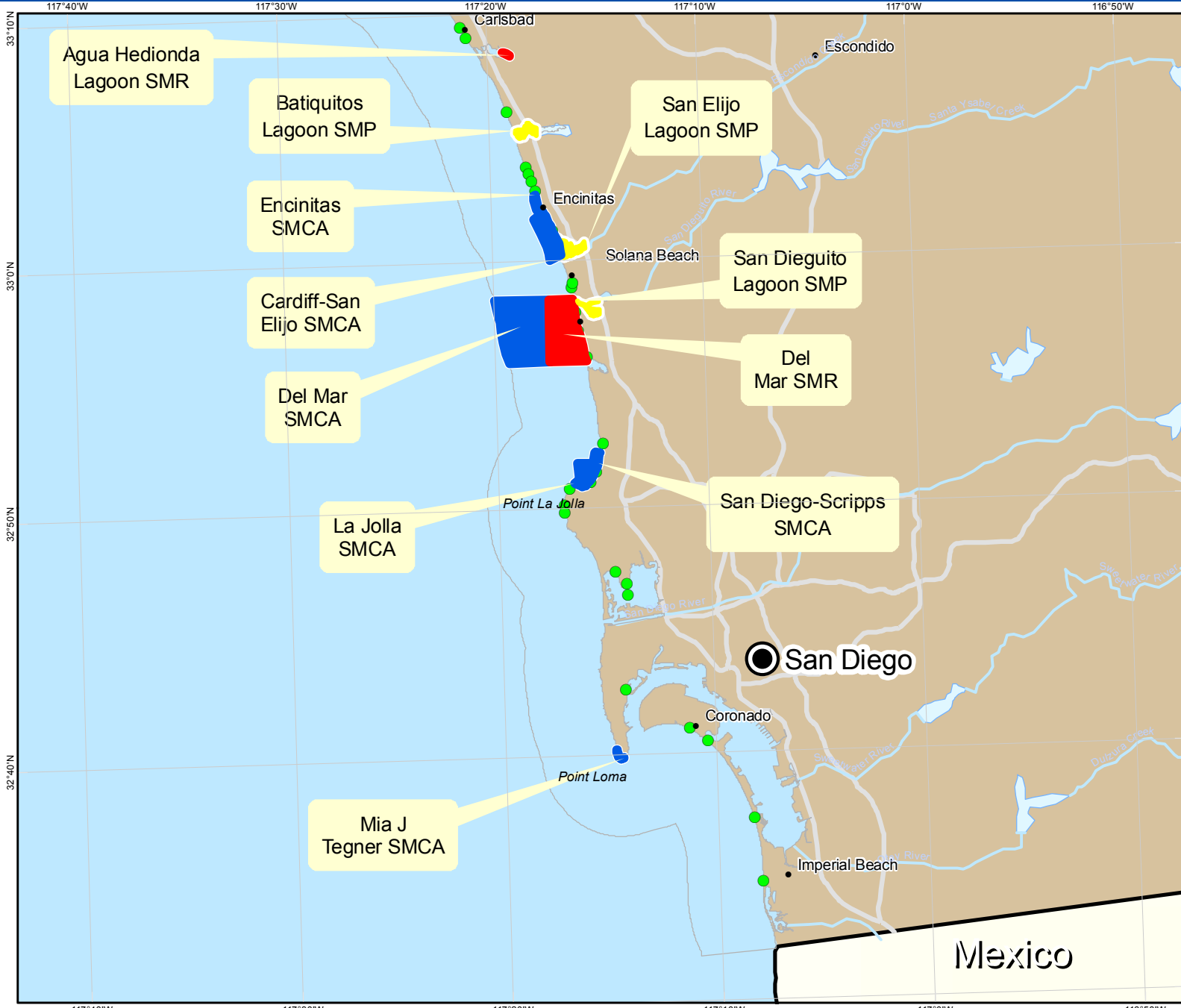
Projection Information:

Name: NAD 1983 California Teale Albers
 Projection: Albers
 Datum: North American 1983



Printing Date: 2/26/2009

Created By:
 Marine Map, Cartographic Division UCSB



For more detailed maps please visit: www.marinemap.org/marinemap

California Marine Life Protection Act (MLPA) Initiative

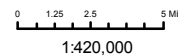
Round 1 Draft External Proposal B

- Legend**
- Proposed State Marine Conservation Area (SMCA)
 - Proposed State Marine Park (SMP)
 - Proposed State Marine Reserve (SMR = No Take)
 - Proposed State Marine Recreational Management Area (SMRMA)
 - Coastal Access
 - South Coast Study Region Boundary

This map represents a marine protected area (MPA) proposal that has been submitted external from the MLPA South Coast Regional Stakeholder Group MPA planning process. This external proposal is under review; it is NOT a recommendation to the California Fish and Game Commission.

Projection Information:

Name: NAD 1983 California Teale Albers
 Projection: Albers
 Datum: North American 1983

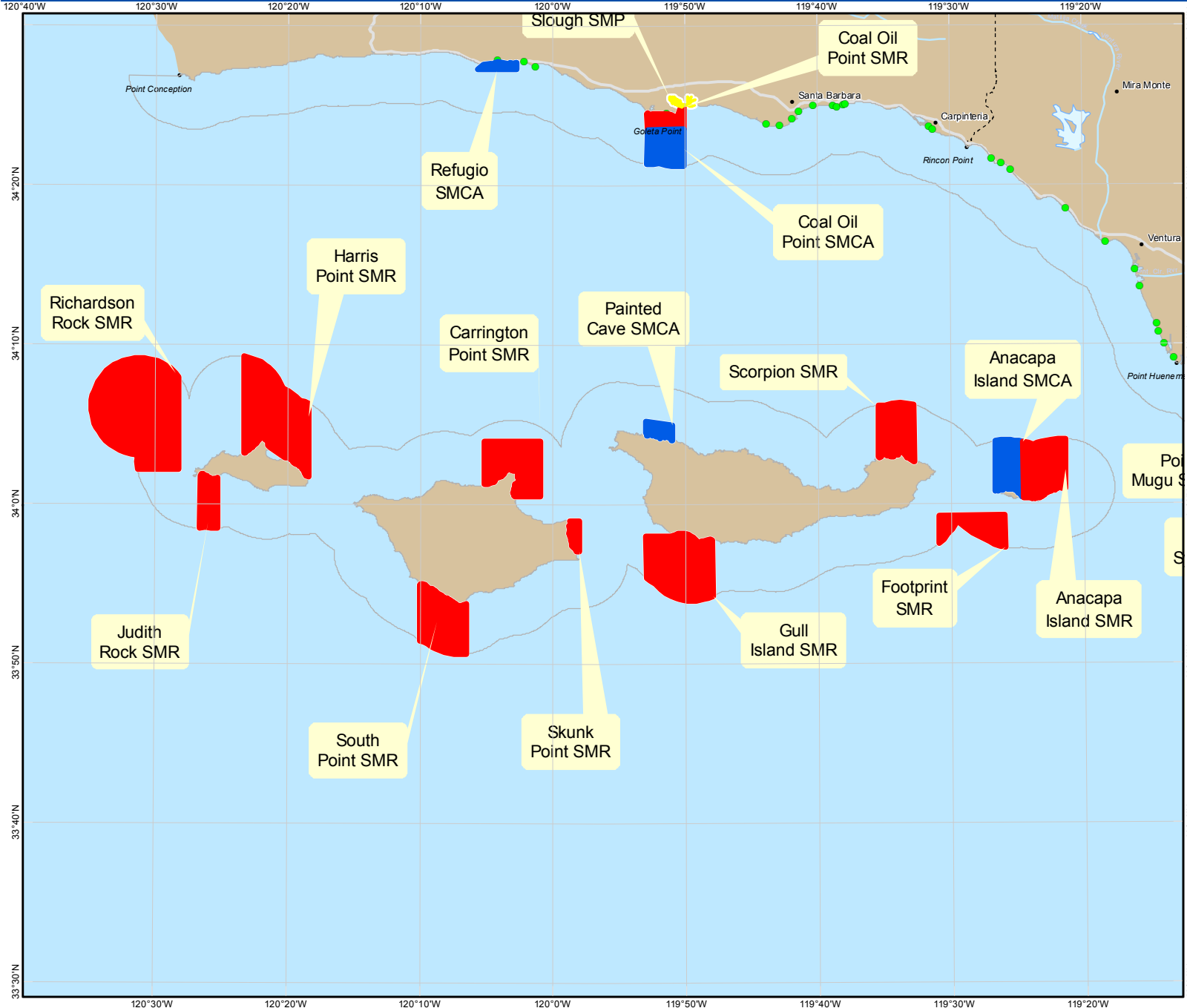


Printing Date: 2/26/2009

Created By:
 Marine Map, Cartographic Division UCSB

MLPA South Coast Study Region:

Subregion 6 - Northern Channel Islands



For more detailed maps please visit: www.marinemap.org/marinemap

California Marine Life Protection Act (MLPA) Initiative

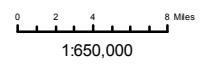
Round 1 Draft External Proposal B

- Legend**
- Proposed State Marine Conservation Area (SMCA)
 - Proposed State Marine Park (SMP)
 - Proposed State Marine Reserve (SMR = No Take)
 - Proposed State Marine Recreational Management Area (SMRMA)
 - Coastal Access
 - South Coast Study Region Boundary

This map represents a marine protected area (MPA) proposal that has been submitted external from the MLPA South Coast Regional Stakeholder Group MPA planning process. This external proposal is under review; it is NOT a recommendation to the California Fish and Game Commission.

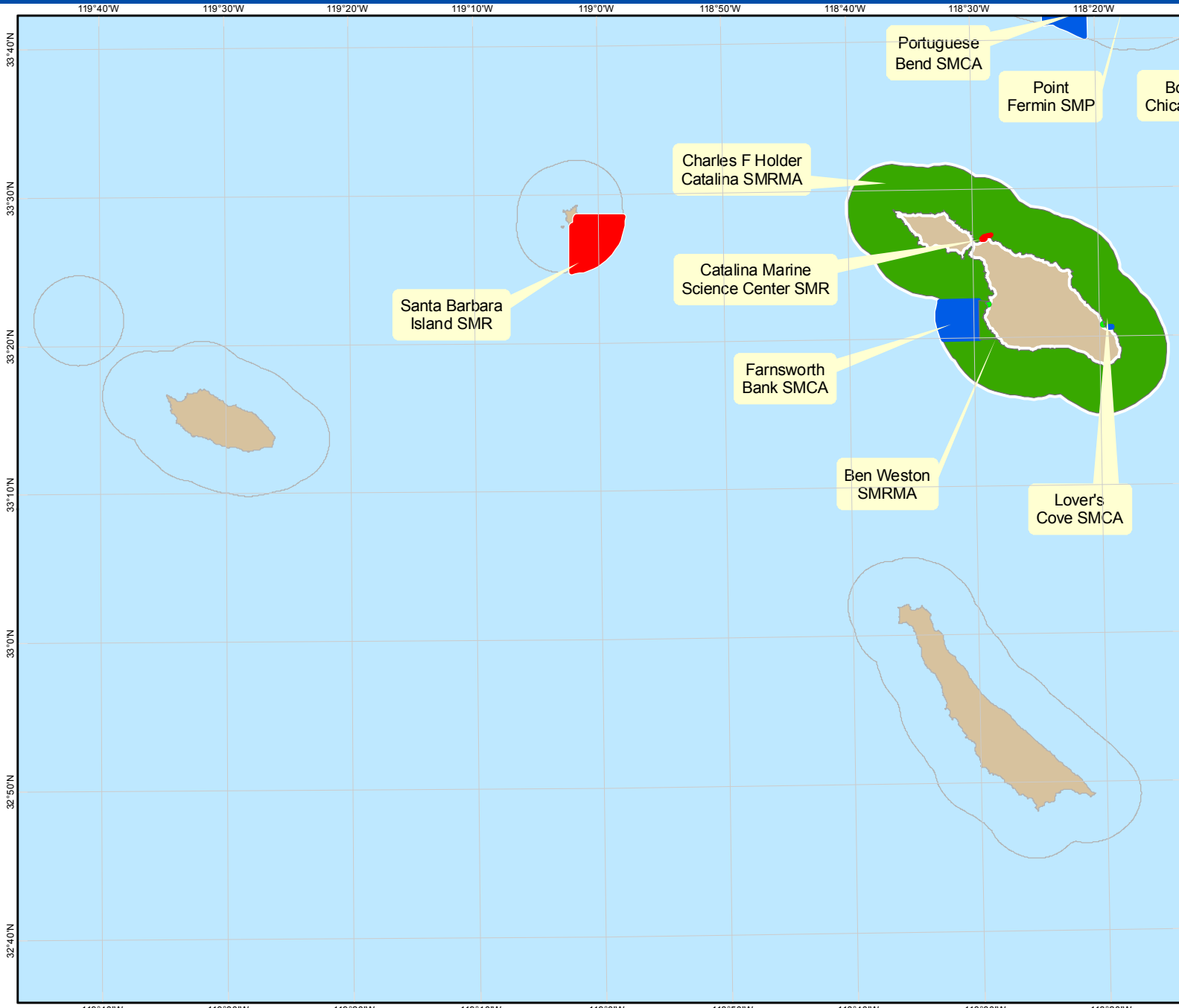
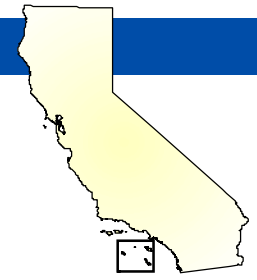
Projection Information:

Name: NAD 1983 California Teale Albers
 Projection: Albers
 Datum: North American 1983



Printing Date: 2/26/2009

Created By:
 Marine Map, Cartographic Division UCSB



For more detailed maps please visit: www.marinemap.org/marinemap

California Marine Life Protection Act (MLPA) Initiative

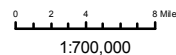
Round 1 Draft External Proposal B

- Legend
Proposed State Marine Conservation Area (SMCA)
Proposed State Marine Park (SMP)
Proposed State Marine Reserve (SMR = No Take)
Proposed State Marine Recreational Management Area (SMRMA)
Coastal Access
South Coast Study Region Boundary

This map represents a marine protected area (MPA) proposal that has been submitted external from the MLPA South Coast Regional Stakeholder Group MPA planning process. This external proposal is under review; it is NOT a recommendation to the California Fish and Game Commission.

Projection Information:

Name: NAD 1983 California Teale Albers
Projection: Albers
Datum: North American 1983



Printing Date: 2/26/2009

Created By:

Marine Map, Cartographic Division UCSB