



MOBILE BUFFET SYSTEMS



www.sicobuffetstations.com

SICO BUFFET STATION PERSONALIZATION PROGRAM

What is Personalization? It is the art of creating something distinctive that represents who you are; your property's unique personality. That is the essence of the SICO® Buffet Station Personalization Program. We give you the flexibility to create an individually tailored style that complements your property's distinctive charm.

DECO BUFFET STATIONS

Select the finishes which will make the SICO® DECO buffet station, **YOUR** Buffet Station.
(See Buffet Personalization Option Sheet for color and style options.)

Step 1: Select Top Finish: Select from 12 standard quartz composite colors

Step 2: Select Body Design:

▶ **Acrylic with LED lighting**

Gives you an endless array of colors to support your guests themed event. (DECO only)



▶ **Laminate**

We offer twelve standard Wilsonart colors/patterns. However, if one of our standard laminates does not fit your style, choose any of the colors / patterns available from Wilsonart.



▶ **Wood Veneer**

Choose from three styles: Masterpiece, Amesbury, and Classic. There are six standard stain colors to further personalize your buffet station. (DECO Only)



Step 3: Select Fascia & Trim: Select either Stainless Steel or Black Powdercoat.

OVATION BUFFET STATIONS

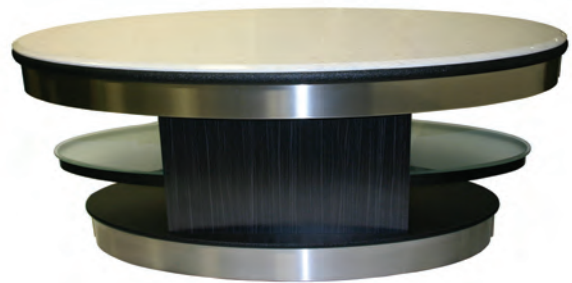
Select the finishes which will make the SICO® Ovation buffet station, **YOUR** Buffet Station.
(See Buffet Personalization Option Sheet for color and style options.)

Step 1: Select Top Finish: Select from 12 standard quartz composite colors

Step 2: Select Body Design:

▶ **Laminate**

We offer twelve standard Wilsonart colors/patterns. However, if one of our standard laminates does not fit your style, choose any of the colors / patterns available from Wilsonart.



Acrylic and Wood Veneer options not available with Ovation Style

Step 3: Select Fascia & Trim: Select either Stainless Steel or Black Powdercoat.

Buffet Station Mobility:

The mobility of both the SICO DECO & Ovation Buffet Series brings the action of the kitchen to wherever it is desired. The stations move on six heavy-duty 4" (10cm) ball-bearing swivel casters.



OVATION MOBILE BUFFET STATION SOLUTIONS

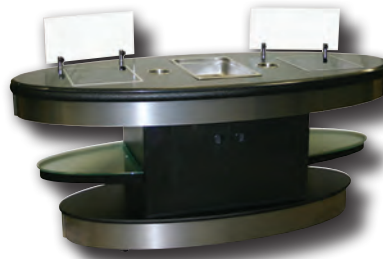
THE PERFECT BALANCE OF STYLE & FUNCTION:

- OVATION BUFFET STATIONS ARE READY TO MOVE IN AND OUT OF ACTION ON SIX HEAVY-DUTY CASTERS.
- NSF APPROVED QUARTZ COMPOSITE TOP.
- UTILIZES THE LATEST INDUCTION COOKING TECHNOLOGY.

Cooking Station



- Two induction cooking units
- Removable stainless steel tray
- Two removable stainless steel utensil holders



Food & Beverage Display Station



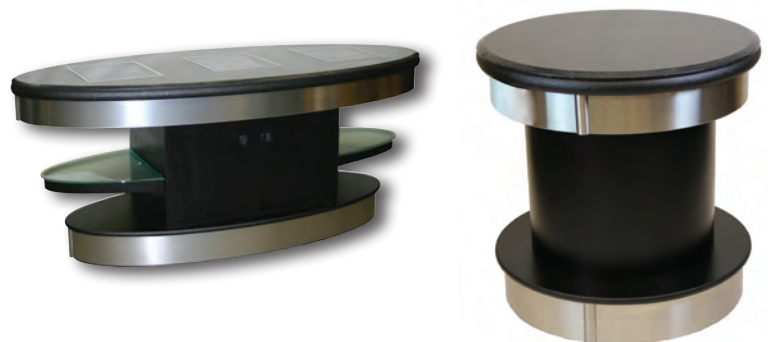
- Two accent lights
- Built-in drainage for melting ice
- Decorative ice bin

Induction Warming Station



- Three induction warming units

Side Station Ambient



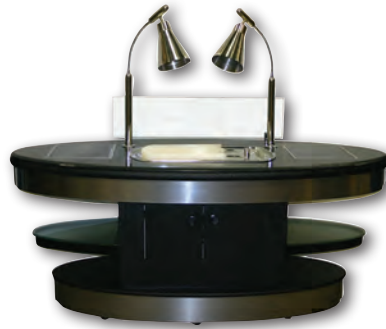
- Offers additional workspace.

OVATION MOBILE BUFFET STATION SOLUTIONS

THE PERFECT BALANCE OF STYLE & FUNCTION:

- BUILT-IN 3/8" THICK FROSTED GLASS PLATE SHELVES WITH LED LIGHTING FOR GUEST CONVENIENCE.
- DECORATIVE BRUSHED STAINLESS STEEL FASCIA, OR BLACK POWDERCOAT.
- STORAGE SPACE IN CABINET.

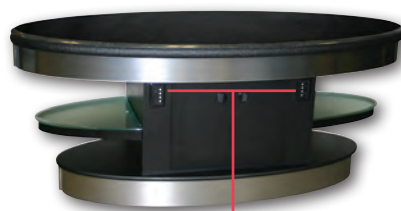
Carving Station with Induction Warming



- Two induction warming units
- Heated carving tray
- Two 250 watt heat lamps

Multi-Purpose Station

Side Station w/Lowerator



- Duplex recessed power receptacles
- Large serving/display surface

- Lowerator Unit - Holds dishes 9-1/4" – 11-7/8" (23.5cm – 30cm) in diameter.

DECO MOBILE BUFFET STATION SOLUTIONS

Cooking Station



Amesbury Shown

- Two induction cooking units
- Removable stainless steel ice bin
- Two stainless steel utensil holders

- MOBILE DECO BUFFET STATIONS ARE READY TO MOVE IN AND OUT OF ACTION ON SIX HEAVY-DUTY CASTERS.
- NSF APPROVED QUARTZ COMPOSITE TOP.
- GREEN™ ENERGY SAVING LED LIGHTING.
- UTILIZES THE LATEST INDUCTION COOKING TECHNOLOGY.
- BUILT-IN PLATE SHELF FOR GUEST CONVENIENCE.
- STORAGE SPACE IN CABINET.

Induction Warming Station



Amesbury Shown

- Three induction warming stations

Induction Warming & Hot Plate Station



Acrylic Shown

- Two induction warming stations
- One 420 watt heat plate
- Two 250 watt heat lamps

Multi-Purpose Station



Laminate Shown

- Duplex recessed power receptacles
- Large serving/display surface

Lowerator Side Station



Masterpiece Shown

- Lowerator Unit - Holds dishes 9-1/4" – 11-7/8" (23.5cm – 30cm) in diameter.
- Heated Lowerator - 120V
Minimum setting = 80° – 100° F.
(26.6° C – 37.7° C)
Maximum setting = 110° – 150° F.
(43.3° C – 65.5° C)



DECO MOBILE BUFFET STATION SOLUTIONS

- FLEXIBILITY OF DESIGN ALLOWS UNITS TO BE USED IN MULTIPLE CONFIGURATIONS, OR INDIVIDUALLY.
- AUTOMATICALLY CYCLE THROUGH A VAST ASSORTMENT OF COLORS. OR SET YOUR STATIONS TO REMAIN ON THE ONE COLOR THAT BEST MATCHES YOUR EVENT THEME.
- LAMINATES ALSO AVAILABLE.

F&B
Side Station



Acrylic Shown

- Plastic drip tray with stainless trim, decorative glass ice bin.
- Internal water collection drain system.

F&B
Display Station



Laminate Shown

- Two lamps for lighting the ice bin
- Plastic drip tray for melting ice
- Decorative "broken glass" ice bin

Bar Station



Masterpiece Shown

- Ice bin / sink
- Two speed rails
- Shelving for glass trays

Ambient
Side Station



Acrylic Shown

- Offers additional workspace.
- Create a variety of buffet line designs.

Hot Plate
Warming Station



Acrylic Shown

- One 1,125 watt heat plate
- Three 250 watt heat lamps

Carving Station with
Induction Warming Units



Laminate Shown

- Heated carving tray
- Two 250 watt heat lamps
- Two induction warming units



DECO MOBILE BUFFET STATION SOLUTIONS

Sushi Station



- Counter top Hoshizaki Refrigerated Display Case
- Non-porous NSF Certified stainless steel top
- Two Duplex Recessed Power Receptacles - 120 volt plug-in for appliances. Max 15 amp.
- Two Utensil Holding Trays
- Cutting Board - 18" (46cm) W x 52" (132cm) work surface measuring.

Griddle Station

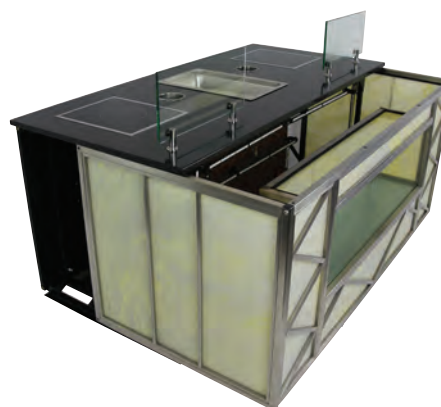
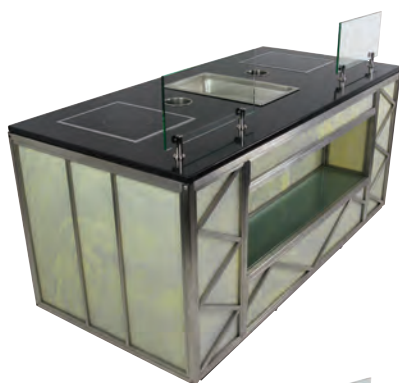


- Induction Griddle Unit: display temperatures set point, actual temperature, diagnostic/error codes. Automatic over-temp shut off.
Max 3500 W power
120 deg F – 400 deg F temperature range
220 Voltage Only
- Removable grease drawer.
- Cleanable intake air filter located beneath.
- Configured with 1 induction warming unit: (350 watts) - 2.5 amps max on each unit. 7 warming temperature ranges from 95 to 194 degrees Fahrenheit (35 - 90 degrees Celsius).
- Removable 9.5"L (49.5cm) x 11.5"W (29cm) Stainless Steel Condiment Tray

A NEW BEGINNING:

Innovative Design Protects Your Investment

Personalities change over time and so can SICO's buffet stations. If your property renovates and your interior changes, your **SICO® DECO** buffet stations can change with you. **SICO® DECO** exterior designs are modular. Simply select new body choices for your buffet stations and swap out your current exterior design for a fresh new look, and a new personality. This means your investment in **SICO® Personalized Buffet Stations** is protected.



*DECO Series Only



SICO® SOPHISTICATE PLUS MOBILE BUFFET TABLE WITH INDUCTION HEATING OR WARMING

MOBILITY, VERSATILITY, STYLE, AND DURABILITY IN ONE UPSCALE TABLE!



THE SOPHISTICATE PLUS CAN BE CONFIGURED WITH ONE, TWO, OR THREE WARMING UNITS PER TABLETOP, OR ONE OR TWO COOKING UNITS PER TOP.



- NSF certified and completely granite composite sealed top surface.
- Superior scratch and stain resistant. Cut directly on the table surface.
- Oval Tubular Understructure - Adds style and strength to the table.
- Mobile Dual-wheel Casters - Easily roll table into and out of service for any function. Non-marring, 4" (10cm) caster wheels protect floors.
- Edge options include granite composite, or Armor-Edge®.



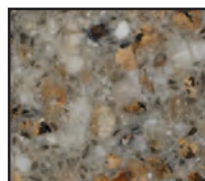
STANDARD GRANITE COMPOSITE TOP CHOICES



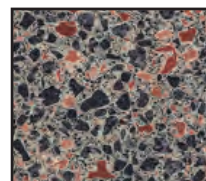
Nero Galaxy (60)



Karra Oro (62)



Bianco Modena (67)



St. Leo's
Copper (68)

SICO® EVENT PRODUCT SOLUTIONS

SICO® PROVIDES A COMPLETE LINE OF PRODUCTS TO SUPPORT THE NEEDS OF YOUR EVENTS. WE SUPPORT A **GREEN APPROACH** WITH OUR PRODUCTS. LINENS ARE NOT NEEDED ON SICO TABLES.



Pre-Function Tables



Socializer



Pacer II Seamless Top

Banquet Tables



Pacer



Armor-Edge® Plywood & Veri-Lite II ABS Folding Leg

Catering Tables



2-Tier Deluxe



2-Tier Classic

Buffet Tables



MultiApp



Sophisticate Plus & Sophisticate

Event Stages



Dual-Height

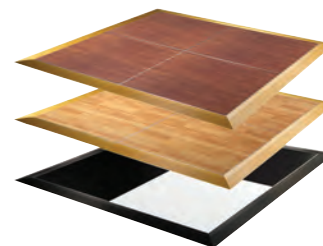


Tri-Height

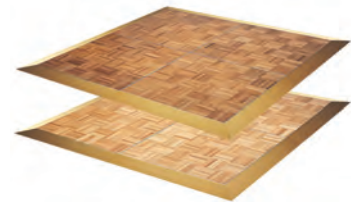


Folding Leg

Dance Floors



Laminate 4' x 4' panels



Wood parquet 3' x 3' panels

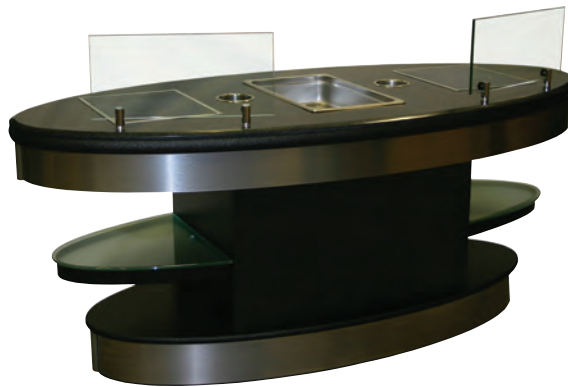
ASK ABOUT OUR FREE SPACE ANALYSIS SERVICE

Take advantage of our FREE space analysis service to determine the correct number of SICO® products needed to fit your particular space.

Just give us the dimensions of your room and we will create a free CAD drawing showing your chosen configurations with detailed measurements, so you can see how everything looks and fits.

Contact us today for details and a free consultation. Just another reason why customers choose SICO® as their project partner in industry with over 60 years of experience in space efficiency and innovation.

CREATING A NEW EVENT STANDARD



MOBILE BUFFET SYSTEMS



SICO® MOBILE BUFFET SYSTEMS

CUSTOMER TESTIMONIALS



“The DECO product allows the users the freedom to focus on the food & guest experience, while the equipment adds beauty to the room. I also find that the versatility of the pieces adds flexibility.”

- **Bonita Easter, General Manager**
Scotiabank Convention Centre
Niagra Falls, Ontario



“Before we had the DECO Buffet Stations, we would have to use folding leg tables with linens and build our action and carving stations for events. Now, with the DECO Stations, not only are they linen-less, but also multi-functional depending on the needs of the event. For instance, we use the DECO F&B Station as a bar back, raw bar set-up, and ice cream station. Guests are really wowed by the LED lights of the DECO Stations when we set the lighting on the stations to match their themed event.”

- **Luke Cotton, Assistant Banquet Manager**
Fort Worth Convention Center
Fort Worth, Texas

www.sicoinc.com

The Americas
SICO AMERICA INC.
7525 Cahill Road
Minneapolis, MN 55439 USA
In U.S. Phone (800) 328-6138
Outside U.S. (952) 941-1700
Fax (952) 941-6688
e-mail: sales@sicoinc.com

Australasia & South Africa
SICO SOUTH PACIFIC
Lot 3 Blade Close
Berkeley Vale, NSW 2261
Australia
Phone [61] (2) 4336-1333
Fax [61] (2) 4388-4643
e-mail: sales@sicosp.com.au

Europe & Middle East
SICO EUROPE LTD.
The Link Park
Lympe Industrial Estate
Lympe, Kent CT21 4LR
England
Phone [44] (1303) 234000
Fax [44] (1303) 234001
e-mail: sales@sico-europe.com

**Asean Countries,
Korea & India**
SICO ASIA PTE LTD.
1 Clementi Loop #06-01
Clementi West LogisPark
Singapore 129808
Phone (65) 6500-0800
Fax (65) 6500-0811
e-mail: sales@sicoasia.com

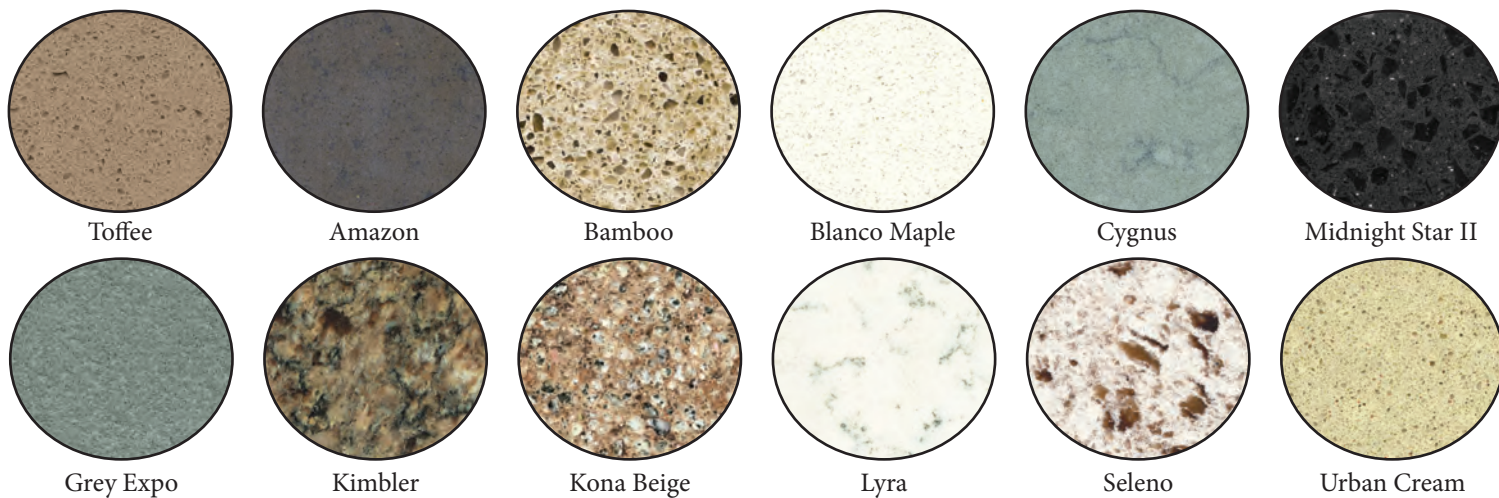
Japan
SICO JAPAN
Izumishoji Bldg. 4F
4-2-6, Kojimachi, 4-Chome
Chiyoda-ku, Tokyo 102-0083
Japan
Phone [81] (3) 3288-0145
Fax [81] (3) 3288-0146
e-mail: sales@sico-japan.com

China
SICO-SST
Area B, Tian Zhu Airport
Industrial Zone
Shun Yi District
Beijing, 101312
Peoples Republic of China
Phone [86] (10) 8048-1587
Fax [86] (10) 8048-2510
e-mail: sales@sico-sst.com



SICO® BUFFET STATION PERSONALIZATION OPTIONS

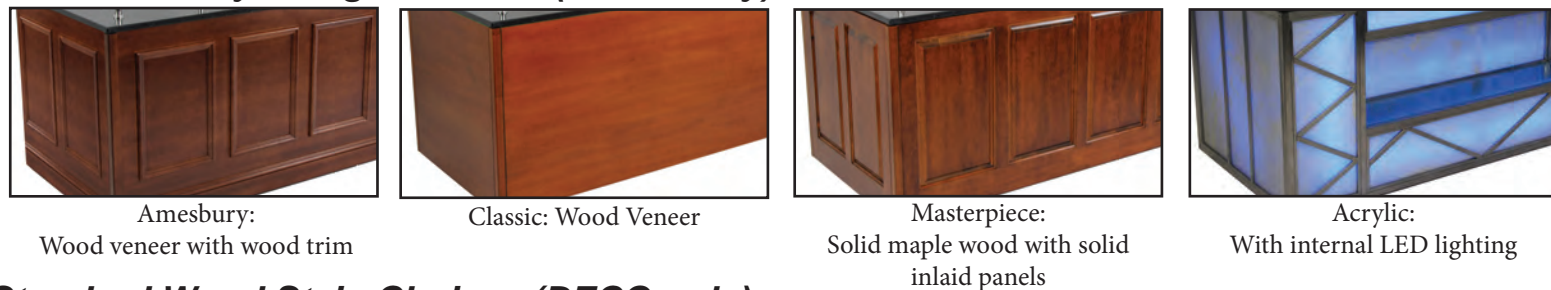
Standard Top Quartz Composite Colors:



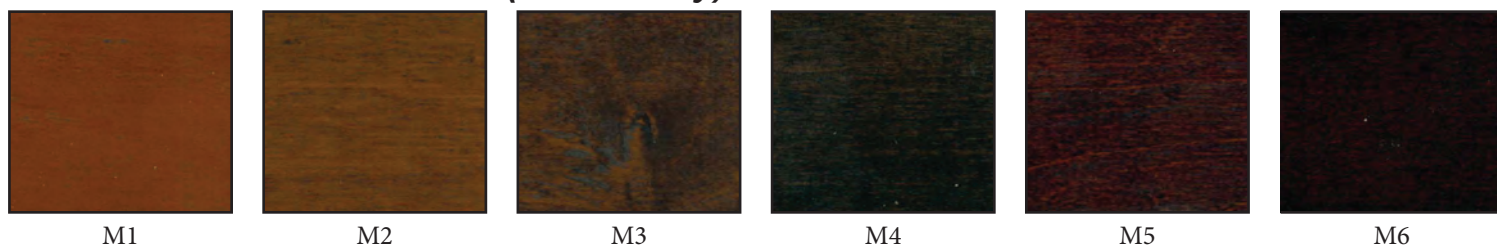
Standard Body Laminate Colors:



Standard Body Design Choices (DECO only):



Standard Wood Stain Choices (DECO only):



Standard Fascia:



Stainless Steel



Black Powdercoat