

Mobile Shape Tables w/o Seats

MT | MT72V | MTQ | MTR | MT48H | MT600 | MTE10



**National
Public
Seating** 

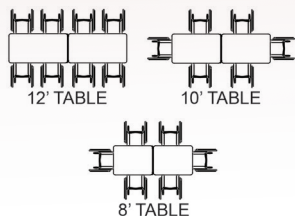
800.261.4112
www.nationalpublicseating.com

PRODUCT INFO



MT Rectangle Table

MT



Model	Shape	Seating	Table WxL	Folded Dimensions	Table-Seat Height (Standard)	Table-Seat Height (Custom)
MT8	Rectangle	8	30"x97"	30"x30"x60"	29"	25"
MT10	Rectangle	10-12	30"x121"	31"x30"x68"	29"	27"
MT12	Rectangle	12	30"x145"	32"x30"x81½"	29"	32"



MT Oval Table

MT72V



Model	Shape	Seating	Table WxL	Folded Dimensions	Table-Seat Height (Standard)	Table-Seat Height (Custom)
MT72V	Oval	8-10	60"x72"	19"x60"x45¼"	29"	25", 27", 32", 42"



MT Hexagon Table

MT48H

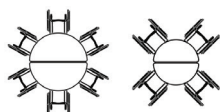


Model	Shape	Seating	Table WxL	Folded Dimensions	Table-Seat Height (Standard)	Table-Seat Height (Custom)
MT48H	Hexagon	4-6	48"x48"	19"x48"x39¾"	29"	25", 27", 32", 42"



MT Round Table

MTR



Model	Shape	Seating	Table WxL	Folded Dimensions	Table-Seat Height (Standard)	Table-Seat Height (Custom)
MT48R	Round	4-6	48"x48"	19"x48"x39¾"	29"	25", 27", 32", 42"
MT60R	Round	6-8	60"x60"	19"x60"x42¾"	29"	25", 27", 32", 42"
MT72R	Round	8-10	72"x72"	19"x72"x45¼"	29"	25", 27", 32", 42"



MT Octagon Table

MT60O

Model	Shape	Seating	Table WxL	Folded Dimensions	Table-Seat Height (Standard)	Table-Seat Height (Custom)
MT60O	Octagon	6-8	60"x60"	19"x62½"x42¾"	29"	25", 27", 32", 42"



MT Square Table

MTQ



Model	Shape	Seating	Table WxL	Folded Dimensions	Table-Seat Height (Standard)	Table-Seat Height (Custom)
MT48Q	Square	4-6	48"x48"	19"x48"x39¾"	29"	25", 27", 32", 42"
MT60Q	Square	4-6	60"x60"	19"x60"x42¾"	29"	25", 27", 32", 42"



MT Elliptical Table

MTE10

Model	Shape	Seating	Table WxL	Folded Dimensions	Table-Seat Height (Standard)	Table-Seat Height (Custom)
MTE10	Elliptical	10-12	121½"x 44¾"	31¼"x 44¾"x 67¾"	29"	25", 27", 32", 42"

ADVANTAGES & BENEFITS

Frame Design | Table Top | Seat

Sophistication made Simple with Safety in mind.

NPS Mobile Tables are sophisticated in design yet simple to operate. Offering enhanced safety features giving you complete peace of mind.



Frame Design

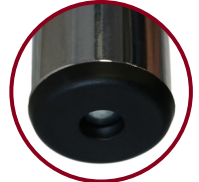
Intelligent steel understructure design supports table tops and seating providing ease of operation and maintenance.

Table Top Apron Support

- Each top is supported by 2" deep, 14 gauge steel aprons capped at the ends with riveted plastic protectors.
- Aprons and brackets are fastened to wood with custom designed tamper resistant screws with superior holding power while still easily serviceable if the need arises.
- Tops are supported between the leg top tubes and wood with spacers.

Leg Assembly

- Structural leg components are comprised of 1 1/4" diameter, 14 gauge steel tubing.
- Legs and stool columns are constructed of 1 1/4" diameter, 14 gauge steel tubing and braced horizontally to the stool support column on the opposite side of the table to resist bending.



Lock Rod

- Heavy duty 7/16" diameter lock rod is chrome plated to resist wear.
- Tamper resistant lock nuts on all down lock assemblies with self-adjusting hinge lock ensure that the down lock engages every time.

Storage Lock

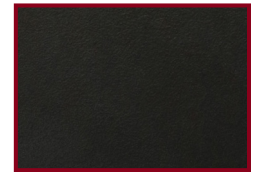
- Heavy duty storage lock is comprised of 1 1/4" square tube with heavy duty catch. Locks automatically in storage position and easily release from either side of the table when opening.



Table Top & Seats

Core

- Available in MDF, Particleboard, or Plywood.
- Tops and benches are surfaced with high pressure laminate bonded to a 3/4" thick AC grade core, sealed underneath with a phenolic backer sheet. This is especially helpful when cleaning the underside of the table.



Edge

- Available with Protect Edge or Vinyl T-Molding.
- Protect Edge is sealed with a polyurethane epoxy resin. Chemically bound to the edge of the laminate, core and phenolic backing sheet.
- Vinyl T-molding is secured by staples to the tops underside approximately every 10".



ADVANTAGES & BENEFITS

Hardware | Operation | Safety

Hardware

Table Top Screws

- Serrated head and thick threading provides superior holding power to frame with the ability to be serviced easily in the field.
- Tamper resistant



Flower Glides and Tube Closures

- Made from glass infused nylon and spring steel, will not break or fall out.

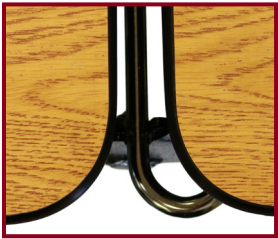


Casters

- 4" heavy-duty, double ball bearing casters
- Weight capacity of 275 lbs. per caster
- Hard rubber, non-marring wheels



Operation



Locking - Opening

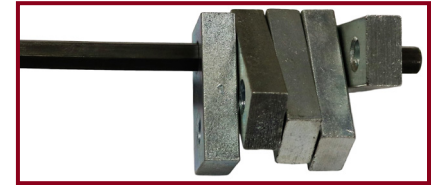
- A gravity lock automatically locks the table in the open position. The lock is disengaged manually, capable of operating from both sides of the table.

Locking - Folding

- The storage lock latch automatically locks the table in the folded storage position. The lock is disengaged manually, capable of operating from both sides of the table within easy reach.

Custom Torsion Bar System

- Easy opening and closing via a perfectly balanced torsion bar system.
- Each unit includes 1 to 5 torsion bars determined by table size and core material.
- Each torsion bar is at a specific angle based on weight distribution.



Safety



Lift-Off Casters

- Mobile tables incorporate the beneficial caster lift-off design in which casters lift off the floor in the open position.
- Lift-off casters do not protrude past the seats so they are not a tripping hazard.

Midway Position Lock

- Secures the unit in a partially folded position for ease of movement during floor cleaning and to prevent finger or hand pinching.



Storage Lock Latch

- Vertical adjustment ensures that the table always locks safely into the folded position.

UL Certified

- Tested for 7,000 open/close cycles exceeding the UL testing of 6,000 cycles.



DESIGN OPTIONS

Table Core Options



MDF
(MD)



Particleboard
(PB)

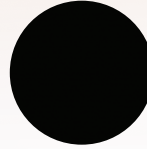


Plywood
(PW)

Frame Color Options



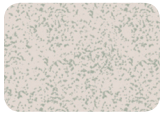
Chrome
(CR)



Powder Coated
(PC)



Standard Laminate Options



Grey Nebula
(GY)



Montana
Walnut (WT)



Banister Oak
(OK)



Wild Cherry
(CH)



Fusion Maple
(FM)



Marigold
(YW)



Hollyberry
(RE)



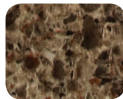
Persian Blue
(BL)

Custom Laminate Options

More Wilsonart laminate options available!



Asian Sand
(7952K-18)



Antique Topaz
(4863K-07)



Rustic Slate
(4888-38)



Bottle Glass
(4901K-01)



Ebony Star
(4552K-07)



Mission Glaze
(4854-38)



Berry Fizz
(4935-38)



Antique Brush
(4823-60)



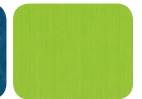
Mystique Marine
(4759-60)



Skyline Walnut
(7964K-12)



Blue Agave
(4919-60)



Island
(D498K-18)

Table Edge Options



Vinyl T-Molding
(TM)



Protect Edge | Black
(PE)

Non Standard Table/Seat Codes*

25"/13"
(25)

27"/15"
(27)

32"/20"
(32)

*For non-standard heights add code to end of model number

Custom Table Edge Options



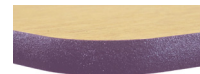
Protect Edge | Navy
(PE/N)



Protect Edge | Green
(PE/G)



Protect Edge | Red
(PE/R)



Protect Edge | Purple
(PE/P)



Protect Edge | Beige
(PE/B)

Table Models

MT8
Mobile Cafeteria Table,
8' Rectangle

MT12
Mobile Cafeteria Table,
12' Rectangle

MT60Q
Mobile Cafeteria Table,
60" Square

MT48R
Mobile Cafeteria Table,
48" Round

MT72R
Mobile Cafeteria Table,
72" Round

MT72V
Mobile Cafeteria Table,
72" Oval

MT10
Mobile Cafeteria Table,
10' Rectangle

MT48Q
Mobile Cafeteria Table,
48" Square

MT48H
Mobile Cafeteria Table,
48" Hexagon

MT60R
Mobile Cafeteria Table,
60" Round

MT60O
Mobile Cafeteria Table,
72" Round

MTE10
Mobile Cafeteria Table,
10' Elliptical

Model Number Configuration

Model Number Core Edge Frame Laminate Color Top

MTE10-PW PE CR CH



**National
Public
Seating**



800.261.4112
www.nationalpublicseating.com