

Mobile Stool Units

MTS | MTS1216 | METS | MTR60S | MTO60S | MCTS



CURVE TABLE
NEW
FOR
2019



**National
Public
Seating**



800.261.4112
www.nationalpublicseating.com

PRODUCT INFO

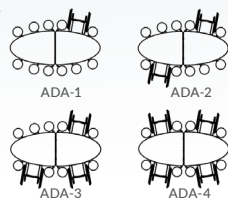


Elliptical Stool Table

METS



Stool & bench combinations available



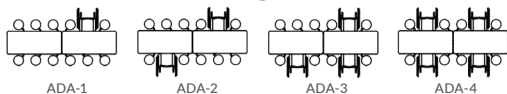
Model	Seats	Table WxL	Folded Dimensions	Table-Seat Height (Standard)	Table-Seat Height (Custom)
METS	12	45"x121"	59"x35"x81 5/8"	29"-17"	25"-13" 27"-15" 32"-20"



Rectangle Stool Table

16 Stools

MTS1216



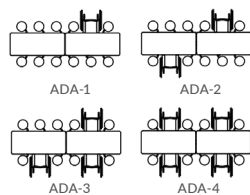
8'/10' conditional based on wheelchair width

Model	Seats	Table WxL	Folded Dimensions	Table-Seat Height (Standard)	Table-Seat Height (Custom)
MTS1216	16	30"x145"	59"x35"x81 5/8"	27"-15"	25"-30"



Rectangle Stool Table

MTS8 | MTS10 | MTS12



8'/10' conditional based on wheelchair width

Model	Seats	Table WxL	Folded Dimensions	Table-Seat Height (Standard)	Table-Seat Height (Custom)
MTS8	8	30"x97"	32"x 59"x57"	29"-17"	25"-13"
MTS10	12	30"x121"	59"x36"x73 1/2"	29"-17"	27"-15"
MTS12	12	30"x145"	59"x39"x79 3/4"	29"-17"	32"-20"

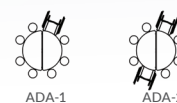


Round Stool Table

MTR60S



Stool & bench combinations available

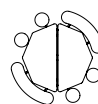


Model	Seats	Table WxL	Folded Dimensions	Table-Seat Height (Standard)	Table-Seat Height (Custom)
MTR60S	8	60"x60"	38"x81"x54 1/2"	29"-17"	25"-13" 27"-15" 32"-20"

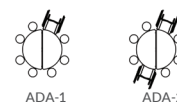


Octagon Stool Table

MTO60S



Stool & bench combinations available

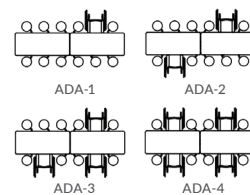


Model	Seats	Table WxL	Folded Dimensions	Table-Seat Height (Standard)	Table-Seat Height (Custom)
MTO60S	8	60"x60"	38"x81"x54 1/2"	29"-17"	25"-13" 27"-15" 32"-20"



Curve Table

MCTS8 | MCTS10 | MCTS12



8'/10' conditional based on wheelchair width

Model	Seats	Table WxL	Folded Dimensions	Table-Seat Height (Standard)	Table-Seat Height (Custom)
MCTS8	8	30"x97"	32"x 59"x57"	29"-17"	25"-13"
MCTS10	12	30"x121"	59"x36"x73 1/2"	29"-17"	27"-15"
MCTS12	12	30"x145"	59"x39"x79 3/4"	29"-17"	32"-20"

ADVANTAGES & BENEFITS

Frame Design | Table Top | Seat

Sophistication made Simple with Safety in mind.

NPS Mobile Tables are sophisticated in design yet simple to operate. Offering enhanced safety features giving you complete peace of mind.



Frame Design

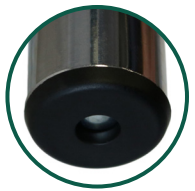
Intelligent steel understructure supports table tops and seating which provides ease of operation and maintenance.

Table Top Apron Support

- Each top is supported by 2" deep, 14 gauge steel aprons capped at the ends with riveted plastic protectors.
- Aprons and brackets are fastened to wood with custom designed tamper resistant screws which offer superior holding power while still easily serviceable if the need arises.
- Tops are supported between the leg top tubes and wood with spacers.

Leg Assembly

- Structural leg components are comprised of 1½" diameter, and a superior 14 gauge steel tubing.
- Legs and stool columns are constructed of 1½" diameter, 14 gauge steel tubing and braced horizontally to the stool support column on the opposite side of the table to resist bending.



Lock Rod

- Heavy duty 7/16" diameter lock rod is chrome plated to resist wear.
- Tamper resistant lock nuts on all down lock assemblies with self-adjusting hinge lock ensure that the down lock engages every time.

Storage Lock

- Heavy duty storage lock is comprised of 1½" square tube with heavy duty catch. Locks automatically in storage position and can easily be released from either side of the table when opening.

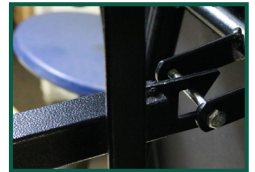
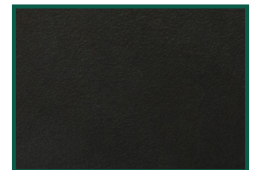


Table Top

Core

- Available in MDF, Plywood, or Particleboard.
- Tops are surfaced with high pressure laminate bonded to a 3/4" thick AC grade core, sealed underneath with a phenolic backer sheet. This is especially helpful when cleaning the underside of the table.



Edge

- Available with ProtectEdge or Vinyl T-Molding.
- ProtectEdge is sealed with a polyurethane epoxy resin which chemically seals to the edge of the laminate, core and phenolic backing sheet.



Seat

Stools

- Stools are injection molded with a minimum of 25 oz. of rubber modified high impact polystyrene materials.
- Ribs, which extend from the outer parameter of the stool to the mounting hub in the center, provide reinforcement to resist failure with 12 integrally molded, tapered ribs.
- Steel washer distributes the edge load of the leg tube so it cannot cut into the stool.
- **Wobble-free** stools are mounted quickly with our custom designed serrated head nut and bolt. Nut includes nylon locking inserts to ensure stools stay tight.
- Power tools are recommended for safe and secure assembly.



ADVANTAGES & BENEFITS

Hardware | Operation | Safety

Hardware

Table Top Screws

- Serrated head and thick Type A threading provides superior holding power to frame with the ability to be serviced easily in the field.
- Tamper resistant Hex-head screws.

Stool Bolts & Nuts

- Serrated Hex-head bolt and serrated flange nuts with nylon insert provides for quick assembly and long lasting "wobble-free" stools.

Flower Glides and Tube Closures

- Made from glass infused nylon and spring steel, will not break or fall out.

Casters

- 4" heavy-duty, double ball bearing casters.
- Weight capacity of 275 lbs. per caster.
- Hard rubber, non-marring wheels.



Operation

Entrances

- Each stool position has its own entrance clear of obstructions when entering the unit to sit down.



Locking - Opening

- A gravity lock automatically locks the table in the open position. The lock is disengaged manually, capable of operating from both sides of the table.

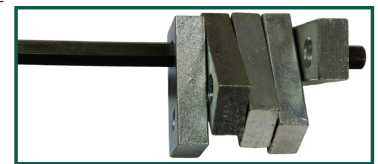


Locking - Folding

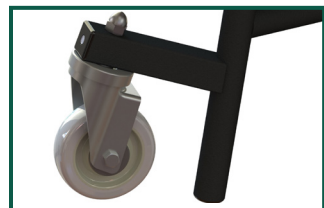
- The storage lock latch automatically locks the table in the folded storage position. The lock is disengaged manually, capable of operating from both sides of the table within easy reach.

Custom Torsion Bar System

- Easy opening and closing via a perfectly balanced torsion bar system.
- Each unit includes 1 to 5 torsion bars determined by table size and core material.
- Each torsion bar is set to a specific degree based on weight distribution.



Safety



Lift-Off Casters

- Mobile tables incorporate the beneficial caster lift-off design in which casters lift off the floor in the open position. The unique design ensures that the table will not move when fully open
- Lift-off casters do not protrude past the seats so they are not a tripping hazard.

Midway Position Lock

- Secures the unit in a partially folded position for ease of movement during floor cleaning and to prevent finger or hand pinching.



Storage Lock Latch

- Vertical adjustment ensures that the table always locks safely into the folded position.

UL Certified

- Tested for 7,000 open/close cycles exceeding the UL testing of 6,000 cycles.

Safety Position

- Folds in teepee position to prevent tipping.



DESIGN OPTIONS

Table Core Options



MDF
(MD)



Particleboard
(PB)



Plywood
(PW)

Frame Color Options



Chrome
(CR)



Powder Coated
(PC)



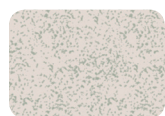
**National
Public
Seating**



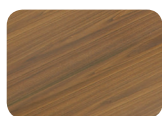
800.261.4112

www.nationalpublicseating.com

Standard Laminate Options



Grey Nebula
(GY)



Montana
Walnut (WT)



Banister Oak
(OK)



Wild Cherry
(CH)



Fusion Maple
(FM)



Marigold
(YW)



Hollyberry
(RE)



Persian Blue
(BL)

Custom Laminate Options

More Wilsonart laminate options available!



Asian Sand
(7952K-18)



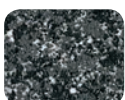
Antique Topaz
(4863K-07)



Rustic Slate
(4888-38)



Bottle Glass
(4901K-01)



Ebony Star
(4552K-07)



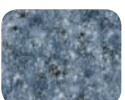
Mission Glaze
(4854-38)



Berry Fizz
(4935-38)



Antique Brush
(4823-60)



Mystique Marine
(4759-60)



Skyline Walnut
(7964K-12)



Blue Agave
(4919-60)



Island
(D498K-18)

Table Edge Options



Vinyl T-Molding
(TM)



Protect Edge | Black
(PE)

Custom Table Edge Options



Protect Edge | Blue
(PE/B)



Protect Edge | Green
(PE/G)



Protect Edge | Orange
(PE/O)



Protect Edge | Purple
(PE/P)



Protect Edge | Yellow
(PE/Y)

Table Models

MTS8

Mobile Cafeteria Table
w/ 8 Stools, 8'L

MTS10

Mobile Cafeteria Table
w/ 12 Stools, 10'L

MTS12

Mobile Cafeteria Table
w/ 12 Stools, 12'L

MTS1216

Mobile Cafeteria Table
w/ 16 Stools, 12'L

METS

Mobile Cafeteria Table
w/ 12 Stools, Oval

MTR60S

Mobile Cafeteria Table
w/ 8 Stools, 60" Round

MTO60S

Mobile Cafeteria Table
w/ 8 Stools, 60" Octagon

MCTS8

Curve Table
w/ 8 Stools, 8'L

MCTS10

Curve Table
w/ 12 Stools, 10'L

MCTS12

Curve Table
w/ 12 Stools, 12'L

Stool Top Color Options



Grey
(02)



Blue
(04)



Green
(06)



Burgundy
(08)



Black
(10)



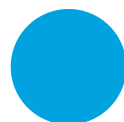
Yellow
(25)



Purple
(28)



Red
(40)



Pacific Blue
(14)



Pea Pod
(16)



Tangerine
(17)

NEW COLORS FOR 2019!

Non Standard Table/Seat Codes*

25"/13"
(25)

27"/15"
(27)

32"/20"
(32)



Model Number Configuration

Model Number Core Edge Frame Laminate Color Top

MTS12-PW PE CR CH 04

Stool Color

*For non-standard heights add code to end of model number