



MobileCast®



Visibility for Your Delivery Day



UPS Logistics Technologies



Stay On Plan with Real-Time Performance Management

Your field resources—are the front line of your operation and literally where the rubber meets the road. No matter how well you've fine-tuned territories, how precisely you've optimized routes, the ultimate success of your operation depends upon accountability. Now with MobileCast® from UPS Logistics Technologies, you can gain the real-time communication tools needed to be more focused, more productive and consistently on plan. As a result, your front office and field operations can work collaboratively like never before, raising performance standards to new heights.

The Powerful, Adaptive Solution That Delivers

MobileCast's execution and event tracking capabilities can help you:

- Track all vehicles in real-time against their individual routing plans
- Reduce costs due to excessive fuel spending, unnecessary mileage, and overtime
- Increase driver accountability and efficiency by eliminating service delays and delivery errors
- Manage by exception for greater dispatch productivity
- Promote customer service by anticipating and avoiding delivery delays through on-the-fly rerouting while providing precise ETAs on request
- Improve communications among all members of your delivery team in the office and on the road
- Gather and centralize customized delivery data
- Build profitability through optimized delivery management

MobileCast®



“Approximately 4% of a route needs to be re-sequenced, and MobileCast allows us to stay on top of these stops so they are not forgotten. Before, we did not know what deliveries were skipped until the routes came back at the end of the day. Now we watch as they happen and proactively contact the customer to make alternate arrangements. It’s revolutionary.”

Mark Booth, Project Lead
Southern Wine and Spirits of America, Inc.

See What’s Happening On-The-Road

Created by UPS Logistics Technologies, MobileCast is a comprehensive, turnkey mobile resource management solution that includes customized tools, service, sales and support—and value from day one. With its advanced proof of delivery capabilities, MobileCast helps to empower your operations team by providing them with the resources they need to ensure the highest levels of productivity and customer service. In addition, you have the flexibility to determine how much control to give your drivers in altering their schedule and routes on the fly.

Unlike AVL (Automatic Vehicle Location) packages, MobileCast literally lets you step outside the four walls of your dispatch location to see where all of your vehicles actually are—to track their respective positions against plan in real-time. This solution provides a great degree of management control—offering

the ability to compare information and ensure on-time compliance and execution. With its open architecture, MobileCast easily integrates with your current routing, scheduling, and host systems, or with the other modules in your Roadnet® Transportation Suite.

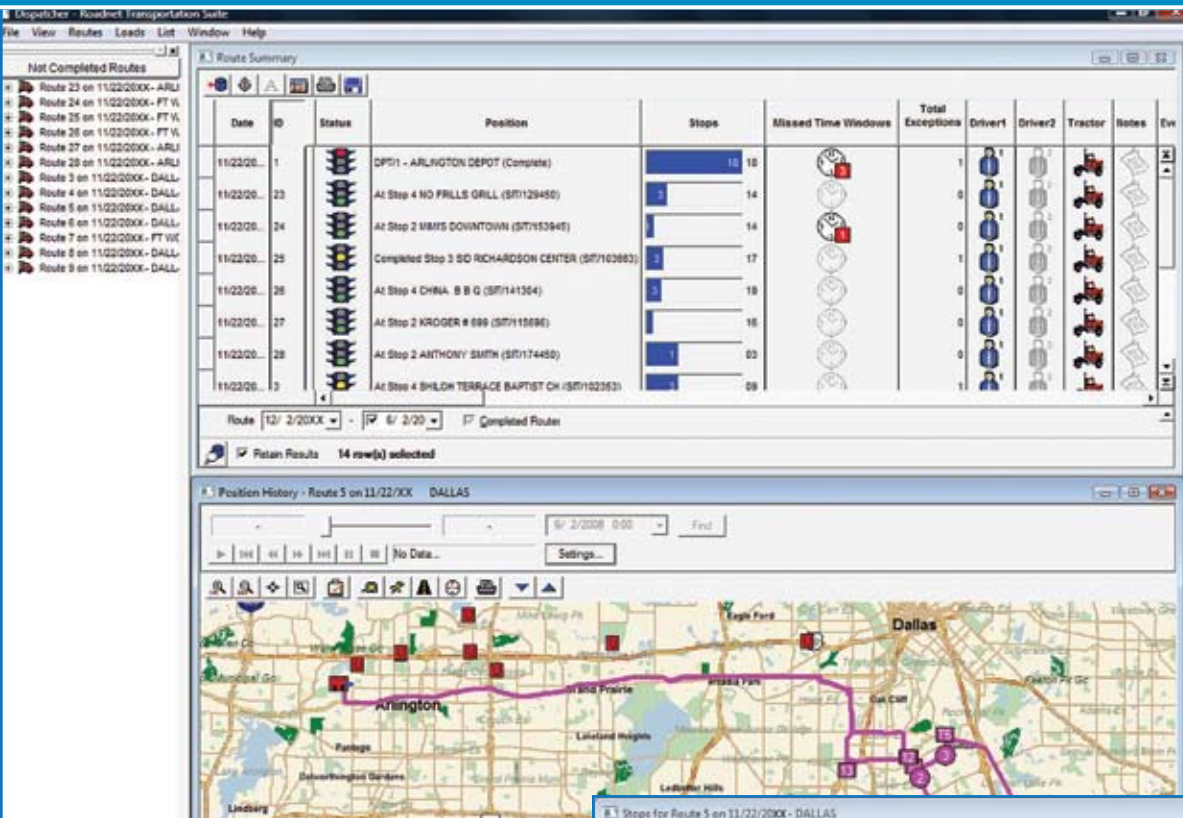
Manage By Exception

For your office dispatch and customer service operations, MobileCast is the ideal solution to manage overload. With its intelligent tracking overview (which can be set to your specifications), MobileCast enables your dispatchers to manage by exception—that is, to see and respond only to those vehicles that are off-plan. Exception reports can also be generated, detailing all exceptions associated with a trip, including unplanned stops and route path deviations.

In addition, dispatchers can:

- Communicate directly with drivers for real-time dispatch of pickups or new deliveries
- Receive real-time updates on delivery status, including all details and variances
- Capture actual stop arrival, departure and service time information
- Receive proactive notification of service failures or late deliveries
- View vehicle space availability for backhauls
- View or print route and driver performance reports
- Automatically integrate operational data captured in the field back into the planning system—to create an even more accurate plan tomorrow
- Disseminate planned and actual delivery information in real-time to provide immediate updates for customers

MobileCast ensures that dispatching can work more efficiently to enforce your plan throughout daily operations.



◀ With MobileCast, staying on top of your pickups and delivery operations couldn't be easier. MobileCast lets you manage by exception by monitoring the route progress in real-time, instantly letting you know if a particular driver is off-route and missing time windows. In addition, a powerful mapping feature helps you graphically compare individual route plans versus actual routes taken.

How many en route vehicles can your dispatchers keep their eyes on? Thanks to MobileCast, all of them! As this MobileCast Stop Complete screen shows, it's a snap to drill down to any route in progress (in this example, "Route 5")—and view it in real time. With this automatically updated snapshot of the route's progress, your dispatchers can quickly assess planned vs. projected stop times and make exceptions on the fly within that route to meet particular customer demands. ▼

MobileCast Solution	Capabilities
Phone	<ul style="list-style-type: none"> • Arrival & departure data • Real-time GPS tracking of driver or vehicle • Driver directions • Text messaging • Dynamic dispatch of pickups/deliveries while en-route • Store and forward capabilities when out of coverage • Driver resequencing • Real-time event management • Actual vs. planned reporting • In field geocoding • Pre/post and stop based surveys • Auto Arrive & Depart*
Handheld	<p>All of the above, plus:</p> <ul style="list-style-type: none"> • OS&D information capture • Barcode scanning • Signature capture • View order financials • Stop grouping

Type	Planned Stop	Location Id	Name	Address Line1	City	Time Window Graph	Planned Arrival	Projected Arrival	Actual Arrival	Planned Departure	Projected Departure	Actual Departure	Ac St
	1	132363	VETERAN'S ADMINISTRATION	4500 S LANCASTE...	DALL...		06:01 EST			06:24 EST		06:18 EST	
	2	132310	VETERAN'S CANTREEN #549	4500 S LANCASTE...	DALL...		06:24 EST		06:20 EST	06:38 EST		06:40 EST	
	3	186186	GOO'S HOLY TEMPLE	2771 S PORCHAM ST	DALL...		06:42 EST		06:59 EST	09:38 EST		09:55 EST	
	4	152975	GOOD STREET BAPTIST CHU...	2110 S BONNIE VIE...	DALL...		09:41 EST		10:59 EST	10:43 EST		11:07 EST	
	5	124316	WILMER-HUTCHINS HIGH	5520 S LANGOON RD	DALL...		10:52 EST	11:16 EST		12:02 EST		12:26 EST	
	6	117660	KENNEDY CURRY JR. HIGH	6655 SEBRING ST	DALL...		12:06 EST	12:30 EST		12:32 EST		12:56 EST	
	7	139150	BISHOP HEIGHTS SCHOOL	3636 S TIGGA BLVD	DALL...		12:32 EST	12:56 EST		12:53 EST		13:17 EST	
	8	163764	ALTA MESA SCHOOL	2961 E MORGAN DR	DALL...		12:57 EST	13:21 EST		13:30 EST		13:54 EST	
	9	111663	DAVS WH	6312 S LANCASTE...	DALL...		13:32 EST	13:56 EST		14:10 EST		14:34 EST	
	10	136830	HARRELL'S CATFISH	3636 S LANCASTE...	DALL...		14:20 EST	14:44 EST		15:19 EST		15:43 EST	
	11	144417	DOMINIC-CHIEZ HARBORIAN...	3336 S LANCASTE...	DALL...		15:20 EST	15:44 EST		15:30 EST		15:54 EST	
	12	150651	BRY'S SNACK CORNER	3200 S LANCASTE...	DALL...		15:38 EST	15:54 EST		15:44 EST		16:00 EST	

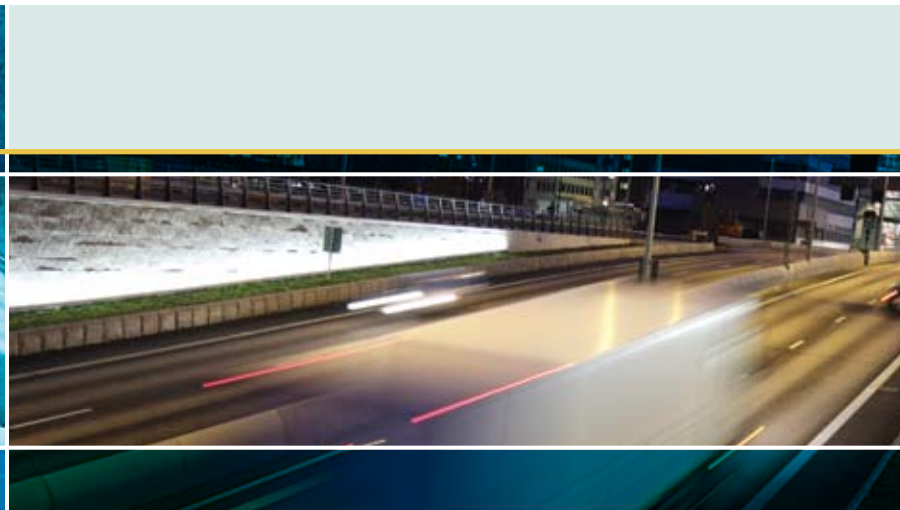
Solutions Scaled To You

On the road, MobileCast offers you a range of flexible communication options that can be scaled to meet your present needs—and that can be reconfigured easily as your operations continue to grow.

- MobileCast Server Software that manages all communications and the enterprise-wide visibility of exchanged data
- The driver's mobile wireless device
- A Wireless Data Network that connects the driver's mobile unit with the MobileCast server

Whatever option you choose, the turnkey MobileCast system includes three integral components in managing the dynamic communications exchange between office and field:

*Not Available in the Handheld



Driving Excellence

Your drivers will welcome the addition of MobileCast as a no-hassles tool to help boost their performance and productivity. With its real-time mobile communications and GPS capabilities, MobileCast eliminates lost time due to unclear directions, routing detours, or customer complications. Depending upon the wireless hardware device that is deployed, drivers can take advantage of such critical capabilities as:

- Real time event management
- Barcode scanning
- Immediate line-item reconciliation
- Signature capture
- Updates on open/close times and multiple time windows
- Reduced paperwork through downloads of manifests and other information
- Instant receipt of new delivery instructions and alerts
- Directions to the next destination point from either the previous stop, current vehicle location or a specific address

The Information Needed To Measure Success

Monitoring benchmarks for service and profitability in your daily deliveries couldn't be easier with MobileCast. Choose from a broad selection of pre-formatted and easily customizable progress reports (or create your own) to track and evaluate every aspect of your delivery performance—and the costs involved. Standard reporting features in MobileCast include:

- Actual versus planned
- Service time exceptions
- Route costs
- Driver performance
- Equipment utilization
- Location statistics
- Route exceptions & metrics



▲ **Your on-the-road employees will appreciate MobileCast's powerful but flexible communications options**, including handhelds that provide an electronic manifest showing each successive stop and related instructions. Upon arrival, simply click the "arrive" button to update the status for dispatch.



UPS Logistics Technologies



Supporting Your Every Move

When you work with MobileCast, you're also working with UPS Logistics Technologies, an industry leader of delivery management solutions. As a business unit of UPS, we have a solid reputation, financial stability and the tools needed to ensure results. Through our evolving Roadnet Transportation Suite, we continue to deliver on that promise, through global solutions that integrate territory planning, street-level route optimization, mobile delivery execution, real-time wireless dispatch and GPS tracking. With this comprehensive set of fully integrated applications, your logistics staff can quickly take

control over every aspect of your order-to-delivery process. Today, you'll find our products in daily use at more than 3,500 locations worldwide, optimizing delivery logistics and management of over 154,000 vehicles.

UPS Logistics Technologies also provides you and your employees with dedicated customer service—24/7, 365 days a year, as well as specialized product training through onsite seminars or our Roadnet University. Whatever the hour, whatever the route, we'll make sure that your operations stay on plan with your goals.

For more information:

UPS Logistics Technologies
849 Fairmount Avenue, Suite 400
Baltimore, MD 21286
410.847.1900
800.762.3638 toll free
roadnet@ups.com
www.upslogisticstech.com