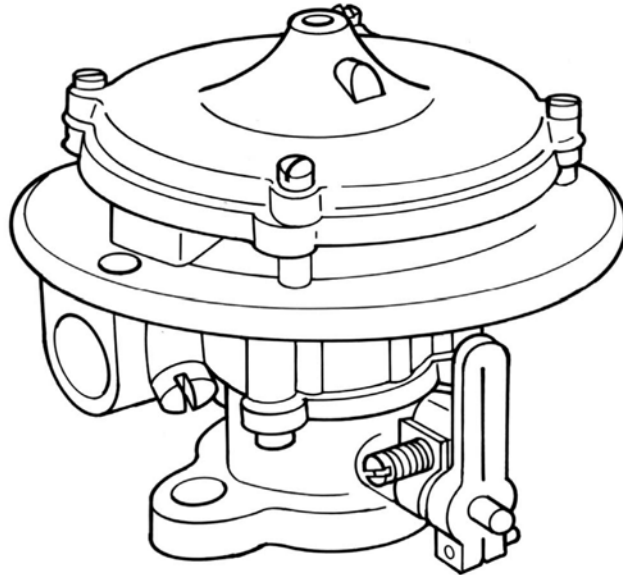


# MODEL 125 CARBURETOR

## CARBURETORS & MIXERS



### MODEL CA125 CARBURETOR



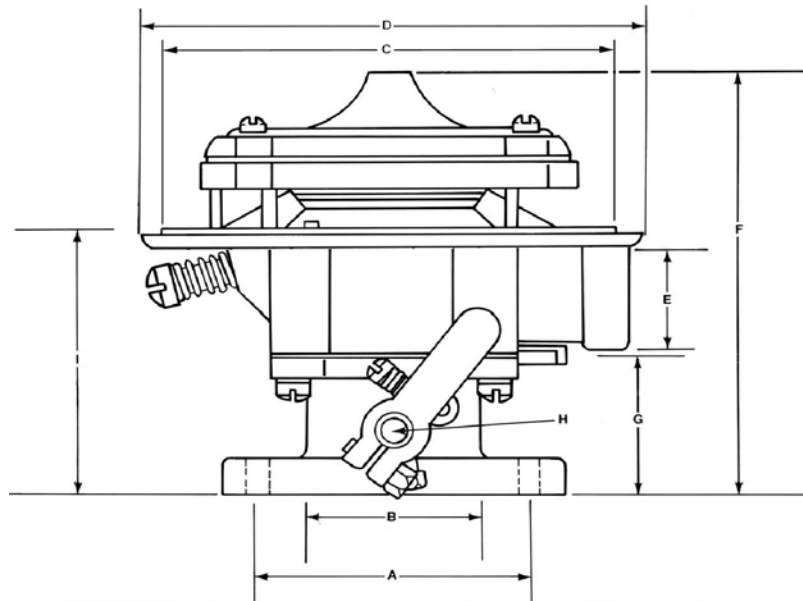
#### DESCRIPTION

The Model 125 carburetor is a single-diaphragm air valve carburetor/mixer for applications requiring air flow up to 235 CFM (111 L/s). It offers a down draft air inlet that can be used for remote air filtration or open-element type air filters. This unit is available for LPG Vapor and Natural Gas Vapor applications. The Model 125 is also available for feedback applications with the "FB" designation.

Two separate air valve vacuum supplies are available with this mixer. Additional low speed mixture control can be obtained to lean air/fuel mixtures with optional shims.

#### SPECIFICATIONS

Fuel Type .....	LPG Vapor or Natural Gas
Inlet Pressure .....	-1.5" w.c. (-0.37 kPa)
Operating Temperature Range .....	-40°F to +250°F (-40°C to +121°C)
Mounting Position.....	Vertical
Diaphragm.....	Hydrin or Silicone
HP/kW .....	126 HP (94kW) @ 202 CFM (95 L/s) and 1.5" in Hg manifold depression
	146 HP (108.8kW) @ 235 CFM (111 L/s) and 2.0" in Hg manifold depression

**DIMENSIONS**


STD. CARB	MIXER	THRTL. BODY	SAE FLANGE	A	B	C	D	E	F	G
				CTR. TO CTR. BOLT SPACING	BORE	MIXER AIR HORN DIA	OVRAL. WIDTH	NPT INLET	OVERALL HEIGHT	THRTL. BODY HEIGHT
CA125-094	CA125M	AT2-16-1	1.25" X 1.50"	71.4mm (2.813")	42.9mm (1.688")	130mm (5.125")	140mm (5.500")	1/2"	141mm (5.563")	41.3mm (1.625")
CA125-6	CA125M	AT2-16-1	1.25" X 1.50"	71.4mm (2.813")	42.9mm (1.688")	130mm (5.125")	140mm (5.500")	1/2"	141mm (5.563")	41.3mm (1.625")
CA125-8	CA125M	AT2-16-1	1.25" X 1.50"	71.4mm (2.813")	42.9mm (1.688")	130mm (5.125")	140mm (5.500")	1/2"	141mm (5.563")	41.3mm (1.625")
CA125-18	CA125M	AT2-16-1	1.25" X 1.50"	71.4mm (2.813")	42.9mm (1.688")	130mm (5.125")	140mm (5.500")	1/2"	141mm (5.563")	41.3mm (1.625")
CA125-20	CA125M	AT2-16-1	1.25" X 1.50"	71.4mm (2.813")	42.9mm (1.688")	130mm (5.125")	140mm (5.500")	1/2"	141mm (5.563")	41.3mm (1.625")
CA125-26	CA125M	AT2-16-1	1.25" X 1.50"	71.4mm (2.813")	42.9mm (1.688")	130mm (5.125")	140mm (5.500")	1/2"	141mm (5.563")	41.3mm (1.625")
CA125-38	CA125M	AT2-23-5	1.25"	68.3mm (2.688")	36.5mm (1.438")	130mm (5.125")	140mm (5.500")	1/2"	119mm (4.688")	34.9mm (1.375")
CA125-44	CA125M	AT2-3-3	1.25"	68.3mm (2.688")	36.5mm (1.438")	130mm (5.125")	140mm (5.500")	1/2"	154.1mm (4.688")	69.1mm (2.719")
CA125-52	CA125M	AT2-16-1	1.25" X 1.50"	71.4mm (2.813")	42.9mm (1.688")	130mm (5.125")	140mm (5.500")	1/2"	141mm (5.563")	41.3mm (1.625")
CA125-75	CA125M	AT2-23-6	1.25"	68.3mm (2.688")	36.5mm (1.438")	130mm (5.125")	140mm (5.500")	1/2"	119mm (4.688")	34.9mm (1.375")
CA125-76-2	CA125M -2	AT2-23-6	1.25"	68.3mm (2.688")	36.5mm (1.438")	130mm (5.125")	140mm (5.500")	1/2"	119mm (4.688")	34.9mm (1.375")
CA125-100-2	CA125M-2	BT2-16-100	1.25" X 1.50"	71.4mm (2.813")	42.9mm (1.688")	130mm (5.125")	140mm (5.500")	1/2"	141mm (5.563")	41.3mm (1.625")
CA125-108	CA125M	AT2-3-3	1.25"	68.3mm (2.688")	36.5mm (1.438")	130mm (5.125")	140mm (5.500")	1/2"	154.1mm (6.667")	69.1mm (2.719")
CA125-134	NSS	AT2-60G-1	N/A	N/A	N/A	N/A	N/A	1/2"	N/A	N/A

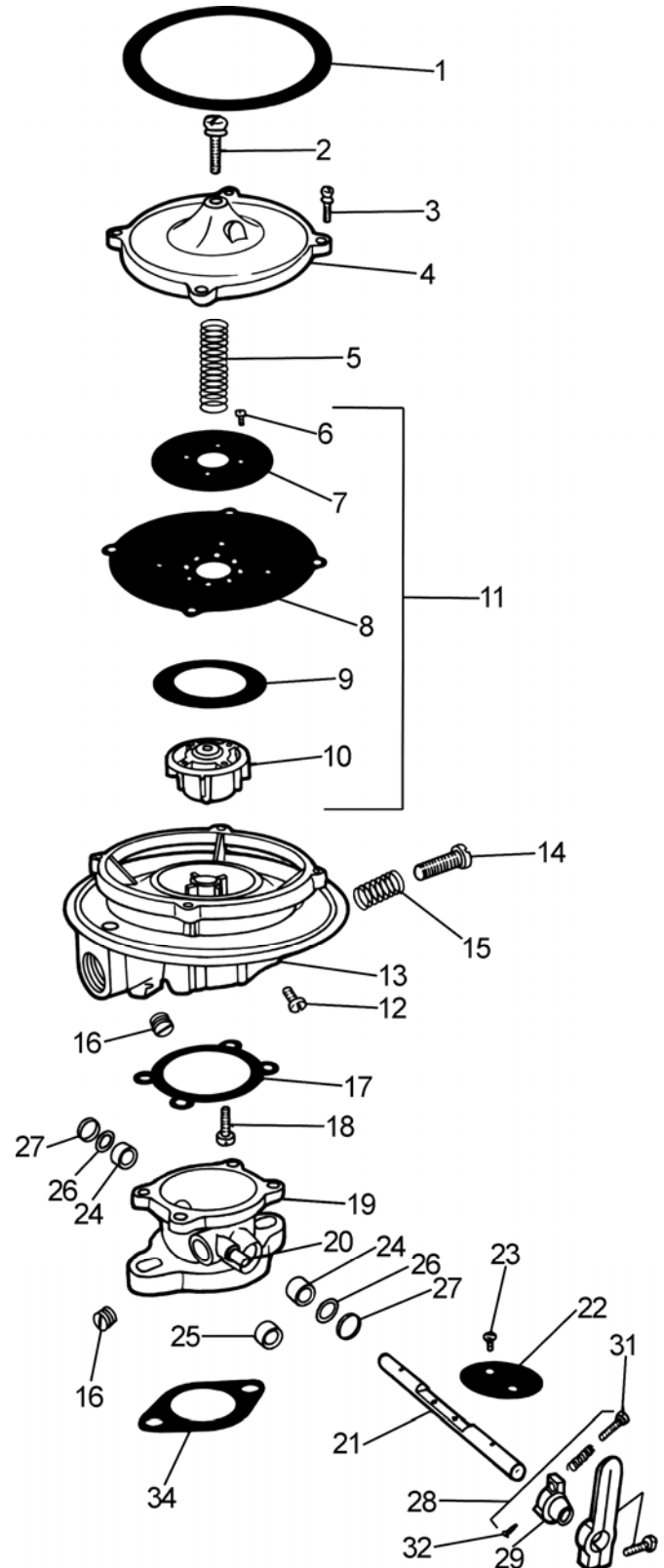
# MODEL 125 CARBURETOR

## CARBURETORS & MIXERS



### COMPONENTS

ITEM#	PART#	DESCRIPTION
1	G1-66	Gasket, mixer to Air Horn
2	NSS	Screw, 1/4-20 x 1" SEMS
3	S1-3	Screw, 10-24 x 5/8" SEMS (4)
4	C1-26	Cover, air valve
5	S2-85	Spring, air valve
6	S1-22	Screw, 5-32 x 1/4" SEMS (4)
7	P2-22	Plate, backup
8	D1-17	Diaphragm
	D1-17-2	Diaphragm, silicone
9	R1-19	Ring, air valve
10	BV1-14	Air gas valve ass'y, complete
11	AV1-14	Valve & diaphragm Assy
	EV1-14-5	Valve & Diaphragm, Silicone
12	S1-69	Screw, 1/4-28 x 5/16" (3)
13	NSS	Body ass'y
14	NSS	Screw, idle
15	S2-16	Screw, idle screw
16	NSS	Plug, 1/8 NPT
17	NSS	Gasket, throttle body to mixer
18	S1-19	Screw, 12-24 x 5/8" SEMS (4)
19	NSS	(Refer to chart for correct AT2-assembly)
20	NSS	Pin, throttle stop (2)
21	S5-1	Throttle shaft, 6.4 mm (0.25") dia.
	S5-2	Throttle shaft, 8.0 mm (0.31") dia.
22	NSS	Fly, 19.1 mm (0.75")
	NSS	Fly, 25.4 mm (1.00")
	NSS	Fly, 38.1 mm (1.50")
	NSS	Fly, 44.5 mm (1.75")
23	NSS	Screw, 6-32 x 1/4" SEMS (2)
	S1-12	Screw, 8-32 x 5/16" SEMS (2)
24	NSS	Bearing Oilite, 6.4 mm (0.25") I.D. (2)
25	NSS	Bearing needle, 6.4 mm (0.25") I.D.,
	NSS	Seal, 6.4 mm (0.25") shaft (2)
26	NSS	Seal, 8.0 mm (0.31") shaft (2)
	S3-25	Seal, internal. 8.0 mm (0.31") I.D., opt. (2)
27	R1-9	Ring, seal retainer (2)
28	NSS	Throttle stop ass'y 8.0 mm (0.31") I.D.
29	NSS	Throttle stop lever
30	S2-15	Spring, idle stop screw
31	S1-21	Stop screw, 10-32 x 3/4"
32	S1-18	Pin, screw, throttle stop
33	AL1-7-3	Throttle lever, short, w/screw
	AL1-7-1	Throttle lever, long, w/screw
34	G1-16	Gasket, 19.1 mm (0.75") flange
	G1-17	Gasket, 1" flange
	NSS	Gasket, 25.4 mm (1.00") flange
	NSS	Gasket, 31.8 mm (1.25") flange
	NSS	Gasket, 38.1 mm (1.50") flange
	G1-23	G1-23 Gasket, 44.5 mm (1.75") flange
	G1-56	G1-56 Gasket, 31.8 - 38.1 mm (1.25 -1.50") flange





# MODEL 125 CARBURETOR

## CARBURETORS & MIXERS

### ASSEMBLIES & ACCESSORIES

#### MIXERS, LP GAS (STANDARD)

PART#	DESCRIPTION
CA125M	Mixer
CA125M-10	Mixer, complete vac. Lifter 100% Flow
CA125M-10-2	Mixer, complete vac. Lifter 100% Flow, Silicone
CA125M-2	ASM Mixer w/ silicone diaphragm dia.
CA125M-292	Mixer, Ass'y for CA125-134
CA125M-3	Mixer, Lean
FB125-30672-001	Feedback Mixer Ass'y, 4.3L SCAQMD
FB125M	Mixer Ass'y, Feedback

#### THROTTLE SHAFTS

PART#	DESCRIPTION
S5-1	6.4mm (0.25") dia., 114mm (4.50") long
S5-2	8.0 mm (0.31") dia., 127 mm (5.00") long
S5-6	6.4 mm (0.25") dia., 121 mm (4.75") long
S5-7	8.0 mm (0.31") dia., 133 mm (5.25") long
S5-11	8.0 mm (0.31") dia., 156 mm (6.13") long

#### RING SPACERS

PART#	DESCRIPTION
R1-20	Donaldson, V, 58.7 mm (2.31") dia
R1-29	Air valve spacer, AV1-14 (to lean idle mixtures)

#### AIR CLEANER ASSEMBLIES

PART#	DESCRIPTION
AF1-5	71 L/s (150 cfm), 172 mm (6.75") O.D., 60.3 mm (2.38") high
F1-5	Filter, elem Air CA125 150cfm
AF1-8	118 L/s (2.50 cfm), 234 mm (9.25") O.D., 76.2 mm (3.00")
AL1-8-2	118 L/s (2.50 cfm), 234 mm (9.25") O.D., 76.2 mm (3.00") high
AF1-14	236 L/s (500 cfm), 228 mm (9.00") O.D., 191 mm (7.50")
C1-28	Cover, F1-5

#### THROTTLE BODIES (STANDARD)

PART#	DESCRIPTION
AT2-1	3/4" SAE flange, 6.4mm (0.25") Shaft dia.
AT2-2	1" SAE flange, 6.4 mm (0.25") shaft dia.
AT2-2-5	1" SAE flange, 6.4 mm (0.25") shaft dia., w/vacuum advance
AT2-3	1-1/4" SAE flange, 8.0 mm (0.31") shaft dia.
AT2-3-8	1-1/4" SAE flange, 8.0 mm (0.31") shaft dia., w/ vacuum
AT2-4-1	1-1/2" SAE flange, 8.0 mm (0.31") shaft dia.
AT2-4-3	1-3/4" SAE flange, 8.0 mm (0.31") shaft dia.
AT2-16-1	1-1/4" to 1/2" SAE flange, 8.0 mm (0.31") shaft dia., no
AT2-16-4	1-1/4" to 1/2" SAE flange, 8.0 mm (0.31") shaft w/needle
AT2-23	1-1/4" SAE flange, 8.0 mm (0.31") shaft dia.
AT2-23-4	1-1/4" to 1/2" SAE flange, 8.0 mm (0.31") shaft dia., w/
AT2-2-6	Throttle Ass'y, 1" Long Shaft

NOTES: \* AT2-16's have vacuum port.

\* The above throttle bodies are offset.

#### SPACERS (OPTIONAL)

PART#	DESCRIPTION
AS3-10	Ass'y, 12.7 mm (0.50"), to turn Air horn 90°
AS3-43	Ass'y, 4.8 mm (0.19"), to turn Air horn 90°

#### BRACKET ASSEMBLIES (OPTIONAL)

PART#	DESCRIPTION
AB4-2	Throttle Cable/Boden Wire Bracket
AB4-19	AS2-50-2 Throttle Return Springs

#### RETURN SPRING ASSEMBLIES

PART#	DESCRIPTION
AS2-50-1	Throttle return, 6.4 mm (0.25") shaft
AS2-50-2	Throttle return, 8.0 mm (0.31") shaft

#### LEVERS

PART#	DESCRIPTION
AL1-7-1	Ass'y, 44.5 mm (1.75") long
AL1-7-2	Ass'y, w/ 6.4 mm (0.25") ball stud, 44.5 mm, long
AL1-7-3	Ass'y, 33.3 mm (1.31") long
AL1-7-4	Ass'y, w/ swivel, 44.5 mm (1.75") long
AL1-7-5	Ass'y, w/ Wisconsin swivel, 6.4 mm (0.25")
AL1-8-1	Stop ass'y, 6.4 mm (0.25") mounting I.D., 19.1
AL1-8-2	Stop ass'y, 8.0 mm (0.31") mounting I.D., 19.1
AL1-25-1	Ass'y, spring loaded, floating, 6.4 mm (0.25")
AL1-25-2	Ass'y spring loaded, floating, 8.0 mm (0.31")
AL1-26-1	Ass'y, floating, 6.4 mm (0.25") mounting I.D., 54.0
AL1-26-2	Ass'y, floating, w/ swivel, 6.4 mm (0.25")
AL1-27-1	Ass'y, floating, 8.0 mm (0.31") mounting I.D., 54.0
AL1-27-2	Ass'y, floating, w/ swivel, 8.0 mm (0.31")
AL1-31	Ass'y, shaft clamp, 6.4 mm (0.25") mounting I.D.,
AL1-33	Ass'y, shaft clamp, 8.0 mm (0.31") mounting I.D.,
AL1-46	Ass'y, steel shaft clamp, 8.0 mm (0.31") mounting

#### CLAMP

PART#	DESCRIPTION
AC2-29	Clamp Assy, CA125-76

#### GOVERNOR

PART#	DESCRIPTION
AD1-85	Diaphragm, Asst. Throttle, governor
AT2-60G-1	Governor, Hyster 2V
AT2-77G	Governor, Assy
AT2-200	Governor, Assy LPG

#### ADAPTERS

PART#	DESCRIPTION
A1-53	Adapter, 125 Series Carb
A2-7	Air Horn, 66.7 mm (2.63") dia.
A2-8	Air Horn, 58.7 mm (2.31") dia.
A2-9	Air Horn, 56.4 mm (2.22") dia.
A2-33	Air Horn, 80 mm (3.16") dia.
A2-34	Air Horn, 54 mm (2.13") dia.
A3-28	200M, CA22M to 77.8 mm (3.06") hose (use w/
A3-29-1	Adapt. CA100M to CA125M to 2-1/16"

# MODEL 125 CARBURETOR

## CARBURETORS & MIXERS



### ASSEMBLIES & ACCESSORIES

#### ADAPTERS (CONTINUED)

PART#	DESCRIPTION
AA3-29-1	CA125M to 52.4 mm (2.06") hose
AA3-29-2	CA125M to 52.4 mm (2.06") hose, tapped 12-24
A3-31	CA125M to 57.2 mm (2.25") hose
AA3-32-1	CA125M to IMPCO 2B throttle body
AA3-49	CA125M to Datsun C5-P5 Nikki throttle body
AA3-50	CA125M to Datsun C3-P3 throttle body
AA3-58	CA125M to throttle body, 11.1 mm (0.44") offset
A3-94	Datsun 4 bolt to 1" SAE Flange

#### AIR-GAS VALVE ASSEMBLIES

PART#	DESCRIPTION
AV1-14	Std, w/hydrin, diaphragm, LPG
AV1-14-2	Lean, w/hydrin, diaphragm, LPG
AV1-14-3	Std, w/silicone, diaphragm, LPG
AV1-14-4	Lean, w/silicone, diaphragm, LPG
AV1-14-220-2	W/silicone, diaphragm, for non-feedback
AV1-1447-2	For std. feedback, w/silicone, diaphragm
CV1-14	Special lean, w/hydrin, diaphragm
CV1-14-2	Special lean, w/silicone, diaphragm
EV1-14	W/42 valve
EV1-14-2	W/42 valve & silicone diaphragm
EV1-14-4	Air Gas Valve Assembly
AV1-30692-001	Air Gas Valve Assembly

#### ACCESSORIES

PART#	DESCRIPTION
VCS	Valve, Solenoid Vacuum Lift