

ROTATING RIGHT

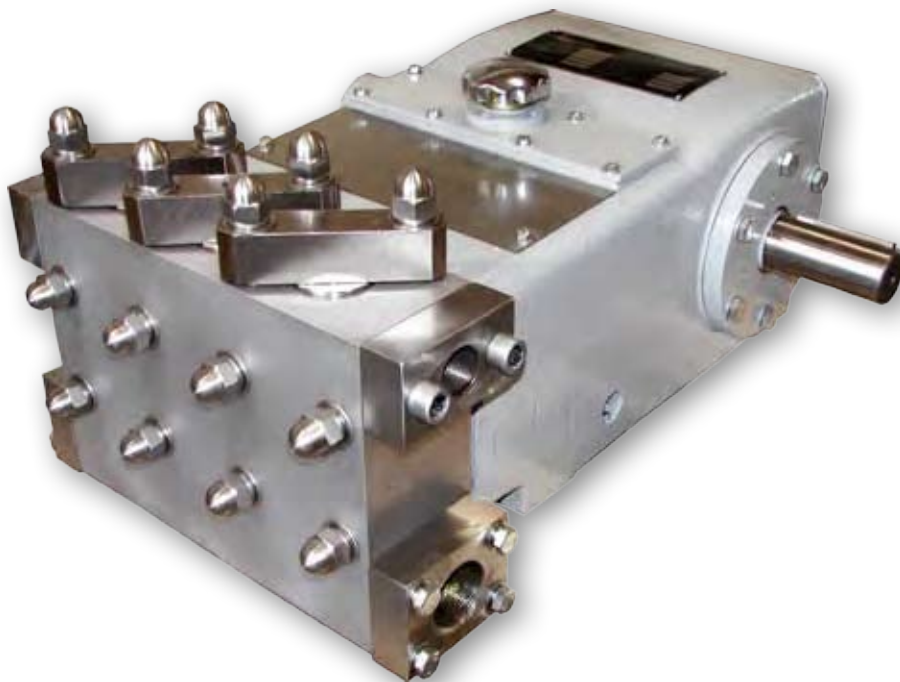
WEATHERFORD MODEL T10 TRIPLEX POWER PUMP

Weatherford[®]

Pump and Fluid Systems

Model T10 Triplex Power Pump

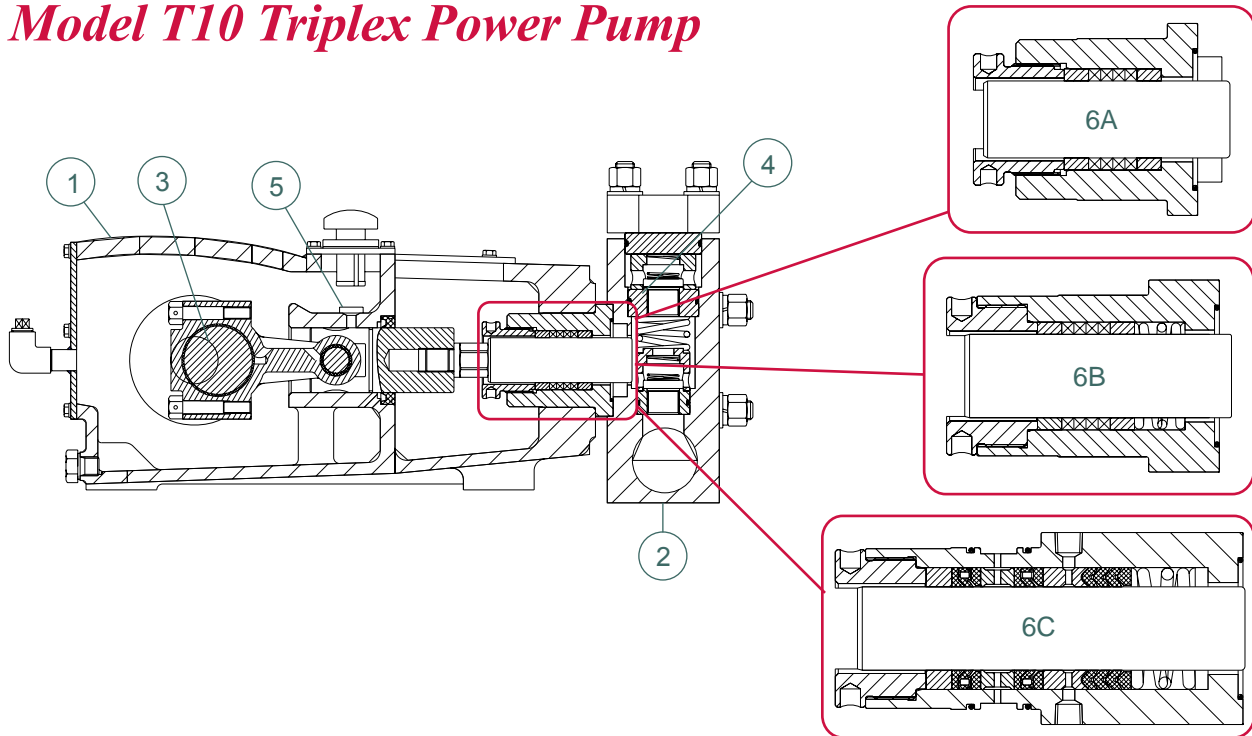
Weatherford's Model T10 is a single-acting, triplex plunger pump rated at 10 HP in continuous duty service and up to 15 HP in intermittent duty. This versatile pump is offered with a variety of material and design options that allow it to be used in a wide range of applications.



Applications

- Amine gas sweetening
- Ammonia
- Chemical injection
- Core drilling
- Crude transfer
- Detergent and soap slurries
- Dust suppression
- Glycol gas dehydration
- High-pressure washdown
- Horizontal directional drilling
- Hot-oil truck injection
- Hydrostatic testing
- Light hydrocarbon transportation
- Machine tool coolant
- Methanol injection
- Municipal jetting
- Polymer flood
- Produced water disposal
- Pulp and paper
- Reverse osmosis
- Secondary recovery
- Steam boiler feed
- Steel mill descaling
- Water injection

Model T10 Triplex Power Pump



Features, Advantages and Benefits

1. The graphite flake microstructure of the cast iron power frame ensures robust, fatigue-free durability, and excellent wear resistance of moving surfaces.
2. All fluid cylinders are made from forged carbon steel, duplex stainless steel, or nickel-aluminum-bronze material for increased durability and extended life. Cast materials are never used as they are susceptible to internal defects resulting from solidification shrinkage during casting.
3. Critical components—crankshafts, connecting rods, crosshead, and bearings—are comparatively larger than industry-standard components, enabling them to withstand continuous duty service and harsh operating conditions.
4. Stacked valve assemblies use O-ring seals on the seats, allowing easy accessibility for quicker service.
5. The oil trough is designed to evenly lubricate the crossheads and wrist pin bearings during operation to reduce wear and extend component life. Pump vendors often exclude this critical feature to simplify the design and reduce the cost of the power end.
6. A variety of packing arrangements are available to meet the requirements of any applications:
 - a. Standard, manually adjustable packing

Model T10 Triplex Power Pump

Specifications

Plunger Ratings

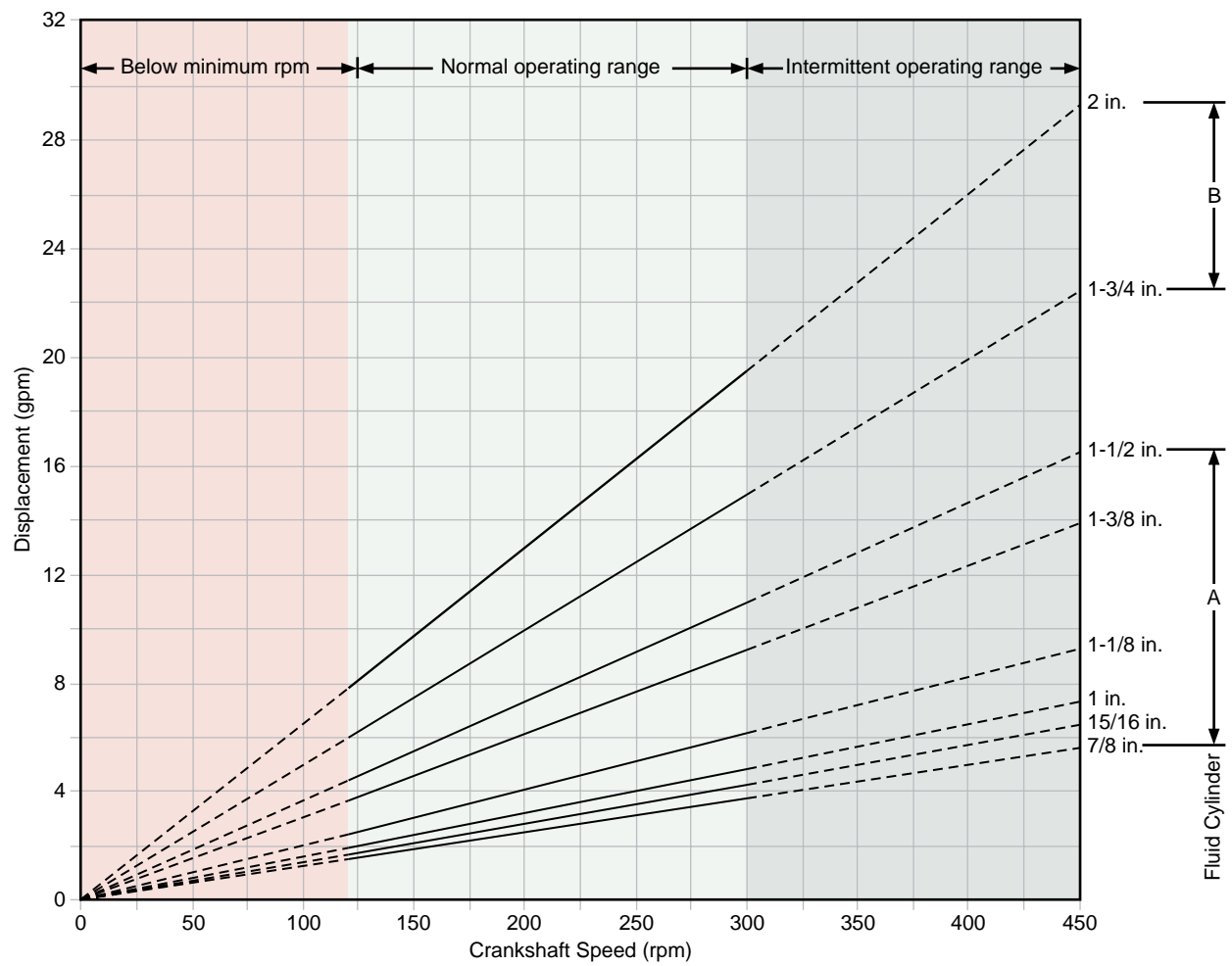
Pump Model	Plunger Size (in./mm)	Displacement (Gal/Rev)	Rated Pressure (psi/MPa)	Rated Capacity						Fluid Cylinder	Standard Connections (in.)	
				Minimum		Continuous		Intermittent			Inlet	Discharge
				gpm	bpd	gpm	bpd	gpm	bpd			
T10-0.875IN	0.875 22.225	0.012	4,400 30.3	1.1	38	3.7	126	5.5	190	A	1-1/2 NPT	1 NPT
T10-0.9375IN	0.9375 23.813	0.014	3,830 26.4	1.3	44	4.2	145	6.4	218	A	1-1/2 NPT	1 NPT
T10-1.000IN	1.000 25.400	0.016	3,370 23.2	1.4	50	4.8	165	7.2	248	A	1-1/2 NPT	1 NPT
T10-1.125IN	1.125 28.575	0.020	2,660 18.3	1.8	63	6.1	209	9.1	314	A	1-1/2 NPT	1 NPT
T10-1.375IN	1.375 34.925	0.030	1,780 12.3	2.7	94	9.1	312	13.7	469	B	2 NPT	1 NPT
T10-1.500IN	1.500 38.100	0.036	1,500 10.3	3.3	112	10.8	372	16.3	558	B	2 NPT	1 NPT
T10-1.750IN	1.750 44.450	0.049	1,100 7.6	4.4	152	14.8	506	22.1	759	B	2 NPT	1 NPT
T10-2.000IN	2.000 50.800	0.064	840 5.8	5.8	198	19.3	661	28.9	991	B	2 NPT	1 NPT

	Continuous Duty	Intermittent Duty
Rated power (HP)	10.6	18.5
Maximum speed (RPM)	300	450
Minimum speed (RPM)	120	90

Stroke length (in./mm)	1.575 40
Rated rod load (lb/kg)	2,645 1,200
Weight (lb/kg)	330 150
Oil capacity (qt/L)	4.8 4.5
Maximum fluid temperature (°F/°C)	180° 82°
Mechanical efficiency (%)	90%

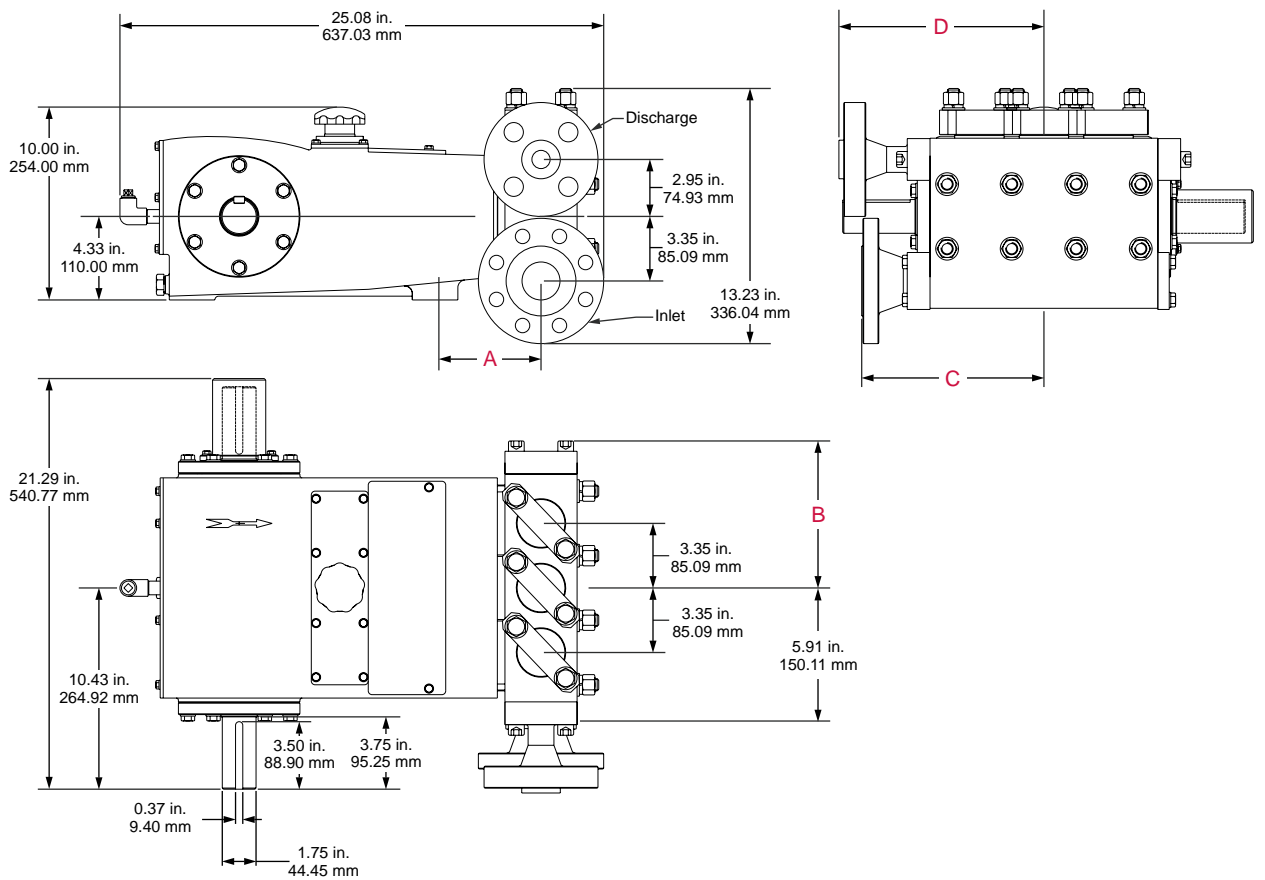
Model T10 Triplex Power Pump

Selection Graph



Model T10 Triplex Power Pump

General Dimensions



Model T10 Triplex Power Pump

Materials of Construction

Fluid Cylinder—The T10 pump is offered with 1045 carbon steel, 955 nickel-aluminum bronze, and 2205 duplex stainless steel fluid cylinder materials, as standard, with 420, 304, and 316L stainless steel materials available on special request.

Plungers—Weatherford provides tungsten carbide coated plungers as standard on all versions of the T10 pump. Weatherford can offer optional solid ceramic, or ceramic coated plungers on request for special applications with pumping abrasive or corrosive fluids for superior durability.

Packing—Weatherford provides all T10 pumps with braided Telfon®-Kevlar® packing as standard. This versatile packing is suitable for a wide variety of fluids and can work with or without external lubrication in most services. Optional packing styles and materials may be available as options to provide maximum performance and durability for almost any fluid and operating condition.

Trim Rings—Trim rings located inside the stuffing box may include throat bushings, lantern glands, follower rings, and adjusting nuts. Weatherford provides bronze trim rings as standard on all pumps; however, optional materials are available to meet the needs of specific fluids. All iron trim rings are offered when pumping amines or fluids that contain H₂S.

Seals—The T10 pump is provided with HNBR o-ring seals as standard. This versatile material is compatible with a wide range of common industrial and oilfield fluids and has excellent temperature and abrasion resistant properties. Weatherford can offer Viton®, Aflas®, and EPDM compounds as options to meet specific fluid compatibility and operating temperature requirements.

Special Notes

1. Capacities shown are based on 100% volumetric efficiency. Actual capacities will be lower based on discharge pressure and fluid compressibility.
2. Operating power required by the pump is calculated by the formula: $HP = (\text{psi} \times \text{gpm}) / 1,543$, where psi is the actual operating pressure in psi units and gpm is the actual pumping capacity in gpm.
3. Maximum operating speeds are listed are based on pumping non-abrasive fluids with viscosities similar to water. Consult Weatherford for operating speed recommendations for viscous or abrasive liquids.
4. Dimensions shown are typical and should not be used for fabrication purposes. Optional flanged connections shown for reference. Inlet and discharge connections can be on either side of the fluid cylinder.
5. Special designs and materials available for operation above 180°F (82°C).
6. API-674 and NACE-compliant designs available on request. Consult Weatherford for specific details and exceptions to these standards.
7. Standard plunger sizes are shown; however, other sizes may be available on request. Consult Weatherford for performance and pressure ratings.
8. Consult Weatherford for assistance with pump selection on applications where actual operating inlet pressures will be greater than 5% of the rated discharge pressure of the pump model selected.

Accessories

Rotating Right offers a full line of accessories to ensure long trouble free and safe operation of your multiplex pumps.

Accessories Include:

- Pulsation Dampeners - Suction & Discharge
- Vibration Shock Switches
- Liquid Level Gauges & Switches
- Pressure Safety Valves
- Plunger Lubricators
- Fire Safety Valves
- High Discharge Pressure Switch
- Condensate Drain
- N.A.C.E. Valving
- Lubricator Level Controller
- API Valves
- Drive Options



Expendables



With our worldwide buying power Rotating Right is well equipped to provide a wide range of replacement parts & expendables for virtually all multiplex plunger pumps regardless of make or model.

Our expendables inventory includes plungers, packing, brass, valves, bearings, crankshafts, connecting rods and seals.



Repair & Overhauls

Rotating Right service technicians follow strict quality control procedures for every pump repair and overhaul. The use of consistent and reliable re-manufacturing techniques ensure your equipment is returned to you in "Like New" condition.



Head Office:
6120 Davies Road
Edmonton, AB
T6E 4M9

Phone: (780) 485-2010 • Toll Free: (866) 707-7867
Fax: (780) 485-1938
Edmonton • Calgary • Drayton Valley
www.rotatingright.com