

- Grease Duct
- Pizza Oven Chimney
- BBQ Chimney/Exhaust
- Dishwasher Exhaust

GD

Grease Duct Systems

**Models SWGD, DWGD+1,
& DWGD-ZC**

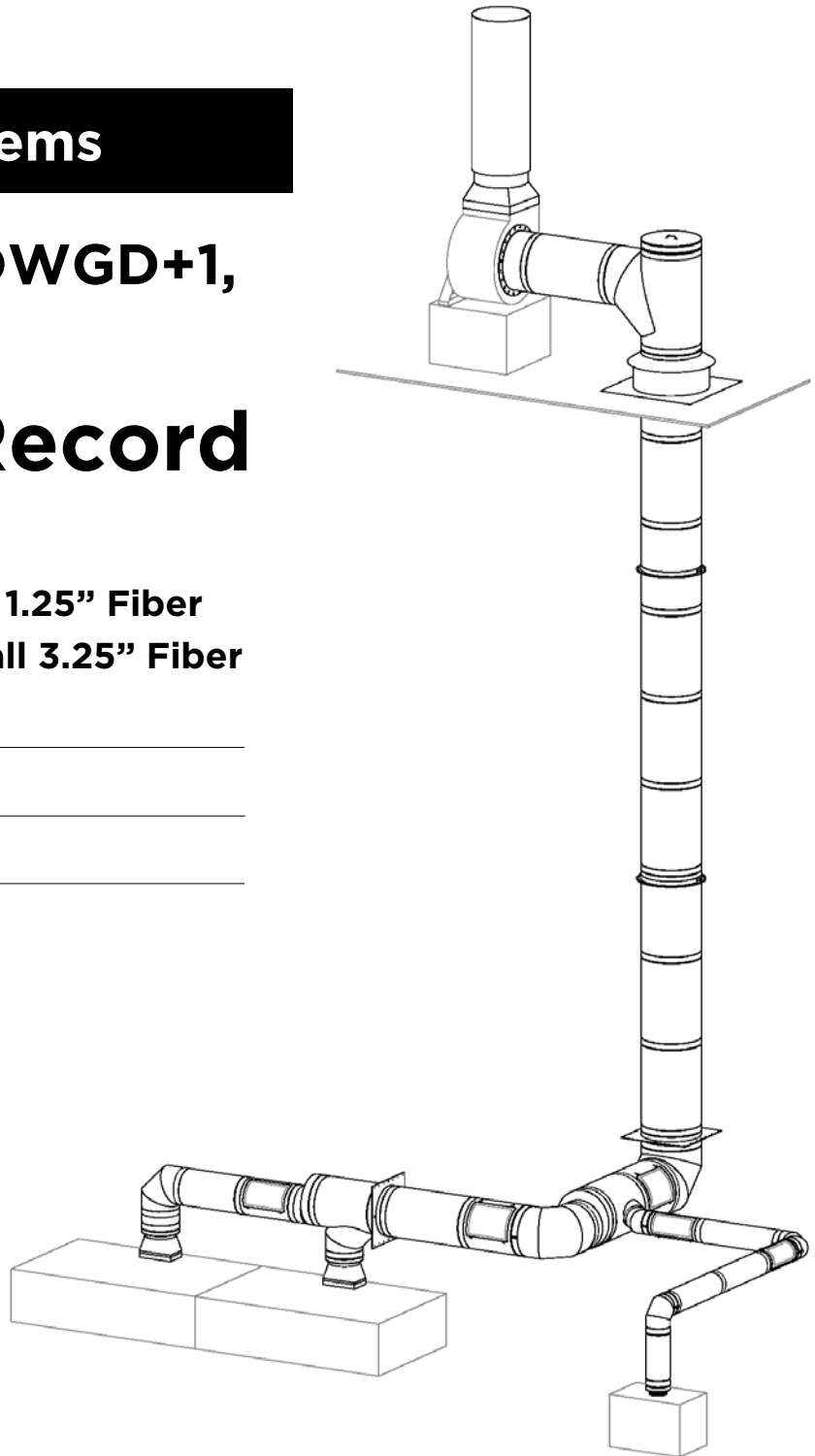
Submittal Record

- ☐ **SWGD Single Wall**
- ☐ **DWGD+1 Double Wall 1.25" Fiber**
- ☐ **DWGD-ZC Double Wall 3.25" Fiber**

PROJECT: _____

PREPARED BY: _____

PREPARED FOR: _____



INDEX

INTRODUCTION

Jeremias Exhaust Systems	3
40 Years of Experience	3
Research & Development	3
All Stainless Steel Construction	4
Best Insulation	4
Joint Conn. Surface Area / Install	4

TECHNICAL SPECIFICATIONS

Model and Part Identifications	5
Material and Thicknesses	5
Underwriters Laboratories Listings	5
Code and Standards	5
Operating Pressures	5
Operating Temperatures & Clearances	5
Joint Detail	6
Pipe Weight per Foot	6
Conical Joint Assembly	7
Flange Joint Assembly	7
Sizing/Pressure Calculations	7
Submittal and Warranted Designs	7

ITEMS

(supports)

APS Anchor Plate Support
HDB Heavy Duty Base
WB Wall Brackets
FAR Full Angle Ring
HAR Half Angle Ring
LSB Light Support Band
GWB Guy Wires Band

(pipe and other lengths)

IAD Inline Access Door Length
6L 6" Fixed Pipe Length
9L 9" Fixed Pipe Length
12L 12" Fixed Pipe Length
18L 18" Fixed Pipe Length
24L 24" Fixed Pipe Length
30L 30" Fixed Pipe Length
36L 36" Fixed Pipe Length
42L 42" Fixed Pipe Length
48L 48" Fixed Pipe Length
UDL Universal Drain Length
TPL Test/Nozzle Port Length
18CL 18" Cut Pipe Length
30CL 30" Cut Pipe Length
18AL 18" Adjustable Length
30AL 30" Adjustable Length
18ALG 18" Adjustable Length w/ Gasket
30ALG 30" Adjustable length w/ Gasket

(fittings and accessories)

15EL 15° Elbow
30EL 30° Elbow
45EL 45° Elbow
87EL 87° Elbow
90EL 90° Elbow
45T 45° Tee
45GT 45° Grease Duct Tee
87T 87° Tee

87GT 87° Grease Duct Tee
90T 90° Tee
90GT 90° Grease Duct Tee
87BT 87° Boot Tee
87GBT 87° Grease Duct Boot Tee
90BT 90° Boot Tee
90WT 90° Wye Tee
DCB Drain Tee Cap Bottom
DCS Drain Tee Cap Side
TCA Tee Cap Access
GTCA Grease Duct Tee Cap Access

(increasers and reducers)

TI Tapered Increaser
TR Tapered Reducer
TEI Tapered Eccentric Increaser
TER Tapered Eccentric Reducer
SI Stepped Increaser
SR Stepped Reducer
SEI Stepped Eccentric Increasers
SER Stepped Eccentric Reducer

(start and end adapters)

RCIS & RCIE Raw Collar Adapter Inside
RCOS & RCOE Raw Collar Adapter Outside
FCS & FCE Flange Collar Adapter
FCK Flange Collar Kit
AFS & AFE 125/150 Lb ANSI Flange
TRS & TRE Transition to Round
FPS & FPE Fan Plate Adapter

(terminations)

OTN, OTNH, OTS, & OTSH Open Termination
EC & ECH Exit Cone
FTN, FTNH, FTS, & FTSH Flat Top Rain Cap
WRC High Wind Rain Cap
SCN, SCNH, SCS, SCSH Stack Cap
MCS & MCSH Miter Cut Termination w/ Screen
EFT & EFTH Engine Flip Top
NLWH No-Loss Weather Head

(thimble and flashings)

HTT High Temperature Insulated Thimble
FRF Flat Roof Flashing
PRF Pitched Roof Flashing
SC Storm Collar
FCF Flat Cone Roof Flashing
PCF Pitched Cone Roof Flashing
SCCF Storm Collar for Cone Flashing
HSDW Heat Shield for DWGD+1

SAMPLE DESIGNS

Sample 1 - Commercial Grease Duct	8
Sample 2 - Pizza Oven Chimney & GD	9
Sample 3 - Stand-Alone Restaurant	10
Sample 4 - Commercial Dishwasher	11

WARRANTY STATEMENT - Grease Duct	12
WARRANTY STATEMENT - Chimney System	13

NOTES/COMPANY INFO	14
--------------------	----

INTRODUCTION

Jeremias Grease Duct Systems

Models SWGD, DWGD+1, and DWGD-ZC are factory built high pressure and high temperature exhaust systems for various type of appliances. Model SWGD is Single Wall and DWGD+1 is Double Wall. DWGD-ZC is Double Wall with 3.25" thick insulation for UL-2221 Zero Clearance and 2-hour Fire Rated Shaft Assembly. All Models may be intermixed in the same grease duct or chimney system.

All Models are intended for use in kitchen ventilation such as Grease Ducts, Pizza Oven Chimneys, and Dishwasher Exhaust.

STRONG – OPEN – INTERNATIONAL



40 Years of Experience

Jeremias is one of the world's leading manufacturers of flue and chimney systems for the exhaust of gases and ventilation, covering all kinds of domestic, commercial and industrial applications. Jeremias Group product range includes over fifty (50) different CE or UL certified systems covering commercial and domestic applications complimented by freestanding Industrial steel chimneys up to 10 feet in diameter. Jeremias offers its clients a wide range of high quality products, technical support for projects, and stack sizing software.

With over 40 years of experience in the venting and component exhaust industries, Jeremias has seven (7) manufacturing plants in six (6) different countries worldwide. Jeremias today has more than 1,000 employees and is proud of its German engineering origins, and fortunately is now also manufactured in the USA from 100% local materials!

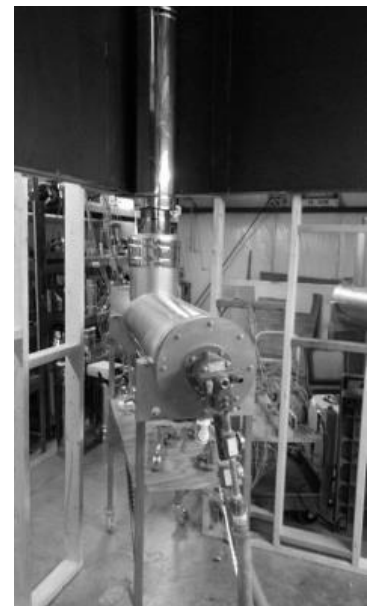
Here in North America, Jeremias Inc. focuses on only high pressure exhaust systems for commercial and industrial applications.

Research and Development

Jeremias has over fifty (50) CE Certified exhaust and chimney systems worldwide for domestic, commercial, and industrial applications. "CE Certification" is the mandatory conformity safety testing for products sold throughout Europe and other parts of the world.

In North America, Jeremias employs only Underwriters' Laboratories (UL) for testing, certifications, and listings to all applicable UL and ULC Standards.

Opened in 2013, the Jeremias R&D Lab in Logan, OH has the industry's most experienced lab technicians on staff and incorporates the latest equipment technologies. This laboratory enables Jeremias to provide industry leadership with a continued focus on new factory-built exhaust applications and unique listings. For example, Jeremias double wall conical system is the first double wall commercial exhaust system in North America that is purposely designed to use insulation between the walls from the start; whereas other manufacturers derived insulated versions from the original air space design.



INTRODUCTION

All Stainless Steel Construction



The entire construction is stainless steel. Including all accessories such as supports and angle rings.

This means there is no cross contamination in the factory from carbon steel cutting/welding.

The standard outer jacket is Type 304 stainless steel with a bright annealed finish. The outer jacket has a laser welded seam and all fittings are tig welded. Jeremias cleans all external welds to assure the customer clearly sees the quality standard we are setting.

Jeremias backs our Grease Duct systems with an industry best Limited Lifetime Warranty.

Best Insulation

Jeremias uses the new Superwool® Plus fiber blanket by Thermal Ceramics (Augusta, Georgia), which has improved handling strength and enhanced thermal properties. Superwool® Plus blanket is manufactured from pure raw materials using a new manufacturing technology. In addition to enhanced thermal properties, large nuisance dust particles have been effectively eliminated making the product soft to the touch and less irritating during use. Superwool® Plus blanket contains neither binder nor lubricant and does not emit any fumes or smell during the first high temperature firing.

Jeremias compresses a 1½" blanket into a 1¼" area delivering better clearances and skin temperatures than other loose fitting blanket insulated pipes. This also eliminates any chance of insulation settling during shipment and storage. See the installation clearance example using the same pipe I.D. as compared to other manufacturers. For example, Jeremias Model DWGD+1 is clearly the industry leader in the smallest required footprint.

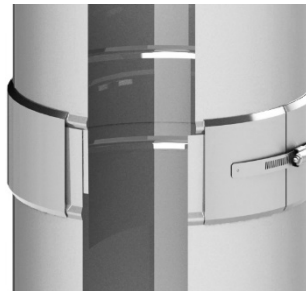


Largest Joint Connection Surface Area / Easiest Install

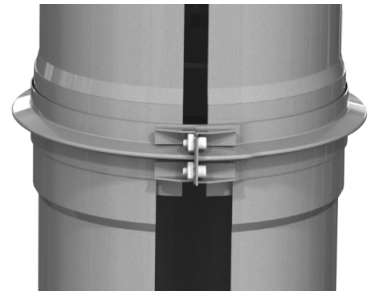
The smaller diameters of SWGD (3 through 16 inch) use the conical joint connection for quick and easy assembly in the field. Jeremias supplied high temperature ceramic lubricating and assembly paste is applied on the conical joint to assure the best steel to steel connection; and it is then tapped into place creating a gas-tight and liquid-tight seal.

All other models have a 1.25" overlapping inner and vee band assembly. This overlap saves an estimated 30% labor savings over simple flange to flange assemblies.

The overlapping inner also protects the silicone seal against high-pressure washings in commercial kitchen exhaust. It also self-aligns the inner pipe eliminating a third person on horizontal installations and quicker installs on the vertical. This is industry best connection for leak-free installations.



Small Diameter SWGD



Large Diameter SWGD, and inner of DWGD+1 and DWGD-ZC

TECHNICAL SPECIFICATIONS

Model and Part Identifications

Part numbers include the Model, diameter, item code, and suffix (if applicable)

Example 1: DWGD18-36L-ZC for an 18 inch inner diameter Model DWFL-ZC double wall 36 inch length of pipe.

Example 2: DWGD10-90WT+1 for a 10 inch inner diameter Model DWGD+1 double wall 90° Wye Tee.

Material and Thicknesses

Inner Liner:

Stainless Steel, thickness per UL-1978 and UL-2221

Insulation:

SWGD: None

DWGD+1: 1.5" thick 8 PCF SuperWool Plus ceramic fiber, compacted to 1.25" (9.6 PCF net effective)

DWGD-ZC: 3.25" thick 10 PCF SuperWool Plus ceramic fiber

Outer Jacket:

3" - 24" Diameters: 0.025" thick Type 304 stainless steel

26" - 36" Diameters: 0.035" thick Type 304 stainless steel

Underwriters Laboratories (UL) Listings

United States:

SWGD

1. UL-1978 Standard, Grease Duct
2. UL-103 Standard, Building Heating Appliance Chimney
3. UL-103 Standard, Additional Positive Pressure Listing

DWGD+1

1. UL-1978 Standard, Grease Duct
2. UL-103 Standard, Building Heating Appliance Chimney
3. UL-103 Standard, Additional Type HT Listing
4. UL-103 Standard, Additional Positive Pressure Listing

DWGD-ZC

1. UL-2221 Standard, Fire Resistance Grease Duct Enclosure Assemblies
2. UL-1978 Standard, Grease Duct
3. UL-103 Standard, Additional Positive Pressure Listing

Canada:

DWGD+1

1. CAN/ULC-S662, Grease Duct
2. ULC-ORD-C959, Industrial Type 540°C Chimney

Code and Standards

Models SWGD, DWGD+1, and DWGD-ZC installed per their Installation Instructions are code compliant with:

- NFPA 96
- NFPA 211
- NFPA 54
- NFPA 31
- NFPA 37
- CSA-B149
- IMC
- IFGC
- UMC
- CMC

The following organizations produce one or more of the above references codes and standards or provide important guidelines for installation and use of the DWKL/DWKL exhaust systems:

- ASHRAE (American Society of Heating, Refrigerating and Air Conditioning Engineers)
- CSA (Canadian Standards Association)
- ICC (International Code Congress)
- IAPMO (International Association of Plumbing and Mechanical Officials)
- NFPA (National Fire Protection Association)

- NFPA (National Fire Protection Association)
- UL (Underwriters Laboratories, Inc.)
- ULC (Underwriters' Laboratories of Canada)

Operating Pressures

Models SWGD, DWGD+1, and DWGD-ZC have been evaluated and Listed by UL for positive internal static pressures up to 90" W.C. after exposure to 1400°F internal continuous temperatures.

Operating Temperatures and Clearances

Operating Temperatures:

Criteria	Permitted Temperatures
UL-1978 Grease Duct ULC-S662 Factory-Built Grease Ducts UL-2221 Fire Resistance Grease Duct Enclosure Assemblies	500°F (260°C) Continuous 2000°F (1093°C) for 30 Minutes
UL-103 Building Heating Appliance Chimney ULC/ORD-C959 Industrial Type 540°C Chimney	1000°F (540°C) Continuous 1400°F (760°C) Intermittent
Additional UL-103 Type HT	2100°F (1150°C) for 10 Minutes

Minimum Airspace Clearance to Combustibles:

Inside Diameter	SWGD	DWGD+1	DWGD-ZC
3" (76mm) to 6" (152mm)	18" (457.2mm)	2" (50.8mm)	0"
7" (102mm) to 14" (456mm)	18" (457.2mm)	2" (50.8mm)	0"
16" (406mm) to 24" (610mm)	18" (457.2mm)	3" (76.2mm)	0"
26" (660mm) to 36" (914mm)	18" (457.2mm)	4" (101.6mm)	0"

Jeremias Model SWGD single wall may be field insulated. Follow NFPA 96 regarding methods of achieving reduced clearances, zero clearances, or fire resistance enclosures for Grease Ducts.

Jeremias Model DWGD+1 uses SuperWool Plus insulation by Thermal Ceramics. See separate engineering judgment from Thermal Ceramics about adding 1-layer of their FireMaster Fastwrap XL around the Model DWGD+1 to achieve zero clearance to combustibles and an ASTM E 2336 fire rated enclosure.

Do not wrap or place any type of insulation in the required airspace surrounding the Building Heating Appliance Chimney applications in an effort to reduce the clearance to combustibles or to create some sort of fire protective enclosure.

Clearance to non-combustibles:

As required for installation, access, inspection, latest NFPA, or per local code.

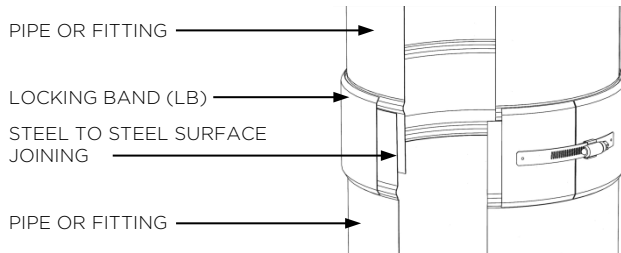
TECHNICAL SPECIFICATIONS

Joint Detail

Model SWGD in 3 through 16-inch diameters incorporate a steel to steel conical connection.

A Jeremias supplied high temperature ceramic lubricating and assembly paste (KL-Paste) is applied on the conical joint to assure the best steel to steel connection; and it is then tapped into place creating a gas-tight and liquid-tight seal.

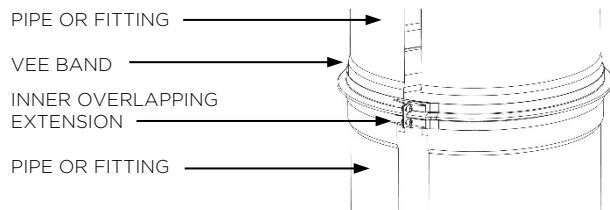
Model SWGD (small diameter) Assembly Detail



Model SWGD in 18 through 36-inch diameters incorporate an extended inner that self-aligns and a ½" flange / vee band system for quick and easy assembly in the field.

A Jeremias supplied high temperature sealant is applied to the vee band groove to create a seal. This sealant is protected by the above-mentioned inner extension.

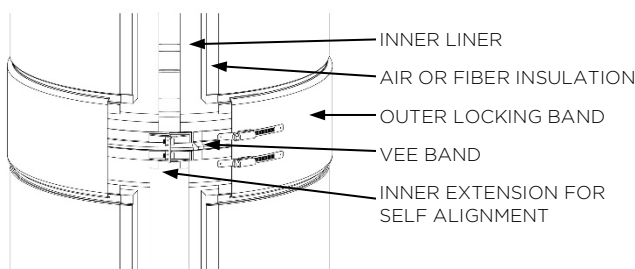
Model SWGD (large diameter) Joint Assembly Detail



Models DWGD+1 and DWGD-ZC are cylindrical, factory-built, modular venting systems that incorporate an extended inner that self-aligns and a ½" flange / vee band system for quick and easy assembly in the field.

A Jeremias supplied high temperature sealant is applied to the vee band groove to create a seal. This sealant is protected by the above mentioned inner extension.

Models DWGD+1 and DWGD-ZC Joint Assembly Detail



Pipe Weight per Foot

The approximate installed weight of the Jeremias exhaust systems can be found using this table. This table does not include accessories such as supports and guides, nor shipping packaging or palletizing weight.

Pipe Weight in Lbs. per Foot:

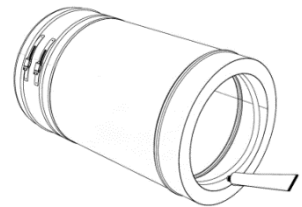
Diameter	SWGD	DWGD+1	DWGD-ZC
3" (76mm)	1.3	4.4	10.6
4" (102mm)	1.7	5.5	12.1
5" (127mm)	2.1	6.5	13.7
6" (152mm)	2.5	7.6	15.2
7" (178mm)	2.9	8.6	16.7
8" (203mm)	3.4	9.7	18.2
9" (229mm)	3.8	10.7	19.8
10" (254mm)	4.2	11.8	21.3
11" (249mm)	4.6	12.8	22.8
12" (305mm)	5.0	13.8	24.3
13" (330mm)	5.4	14.9	25.9
14" (456mm)	5.8	15.9	27.4
16" (406mm)	6.7	18.0	30.4
18" (457mm)	7.5	20.1	33.5
20" (508mm)	8.3	22.2	36.6
22" (559mm)	9.2	24.3	39.6
24" (610mm)	10.0	26.4	42.7
26" (660mm)	10.8	28.5	45.7
28" (711mm)	11.7	30.6	48.8
30" (762mm)	12.5	32.7	51.8
32" (813mm)	13.3	34.7	54.9
34" (864mm)	14.2	36.8	57.9
36" (914mm)	15.0	38.9	61.0

Conical Joint Assembly

Model SWGD smaller diameters joint system is designed for a quick and easy installation that is completely pressure tight. Follow Steps 1 through 3 for general pipe and fittings assembly.

Step 1

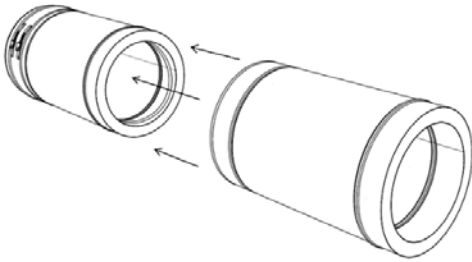
Clean the inner side of the female end and the outer side of the male end of each pipe. Apply the KL Paste to the female end.



TECHNICAL SPECIFICATIONS

Step 2

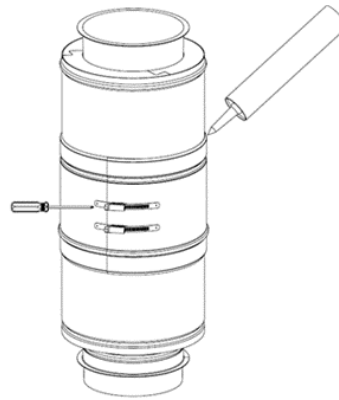
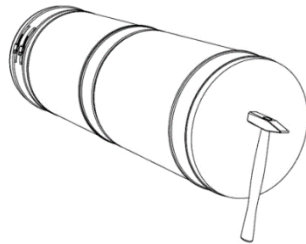
Use your hands to center both pipes in alignment. Connect both pipes and press them together as much as possible by hand.



Step 3

Use the wood plate (supplied with shipment) and place it on the end of the assembly.

Tap 2-3 times. Make sure to press both inner and outer pipes together; the inner should not be more than 1/8" longer than the outer pipe once the male/female conical ends are engaged.



Step 3:

Position the Locking Band in place. Tighten the Locking Band hardware. Caulk the top of the Locking Band on exterior installations.

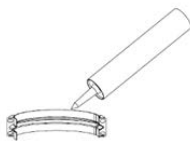
FL Flanged Joint Assembly

Models SWGD large diameters, DWGD+1, and DWGD-ZC joint system is designed to be the easiest installation on the market. Follow Steps 1 through 3 for general pipe and fittings assembly.



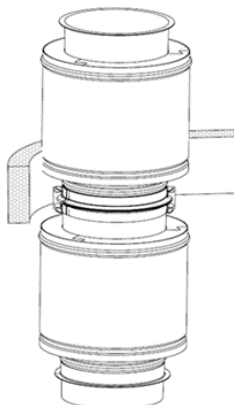
Step 1:

Apply sealant to flange surface. Join flanges together. Apply sealant to the inner groove of the V-Band. Position V-Band around the flanges and tighten.



Step 2:

Wrap the joint insulation around the V-Band



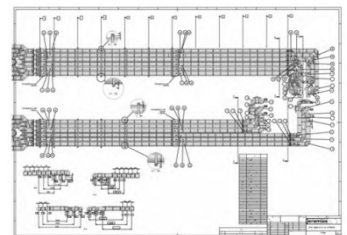
Sizing/Pressure Calculations

Jeremias' engineering uses its own software based upon the "Chimney, Gas Vent, and Fireplace Systems" chapter of the ASHRAE Handbook to assure that the exhaust and chimney system is sized in accordance with the appliance manufacturers' installation instructions.



Submittal and Warranted Designs

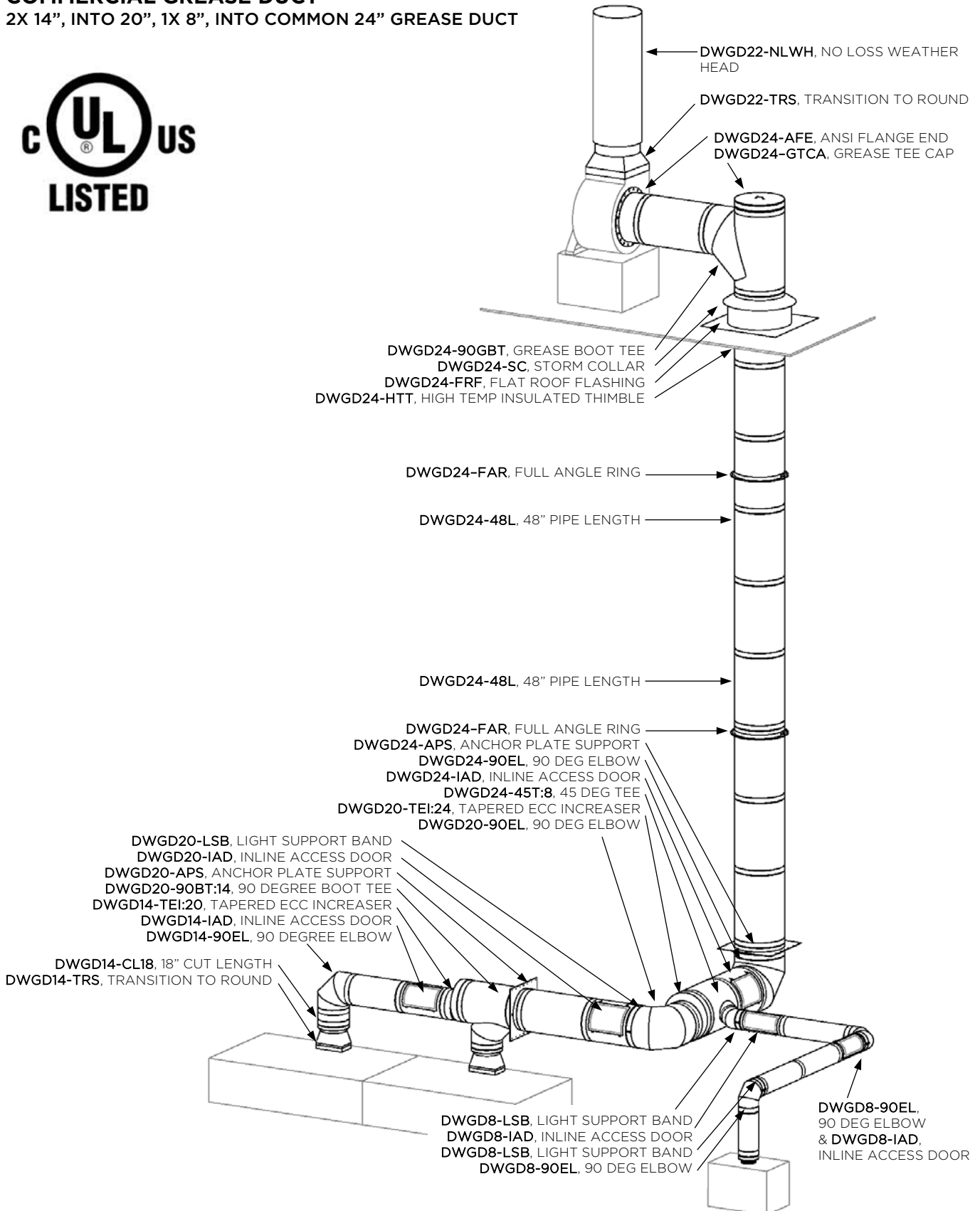
Jeremias also provides CAD layout designs that show all required accessories including drains, supports, access panels, etc., permitting it to be installed in accordance with any specific appliance manufacturers' installation instructions.



SAMPLE SYSTEMS

COMMERCIAL GREASE DUCT

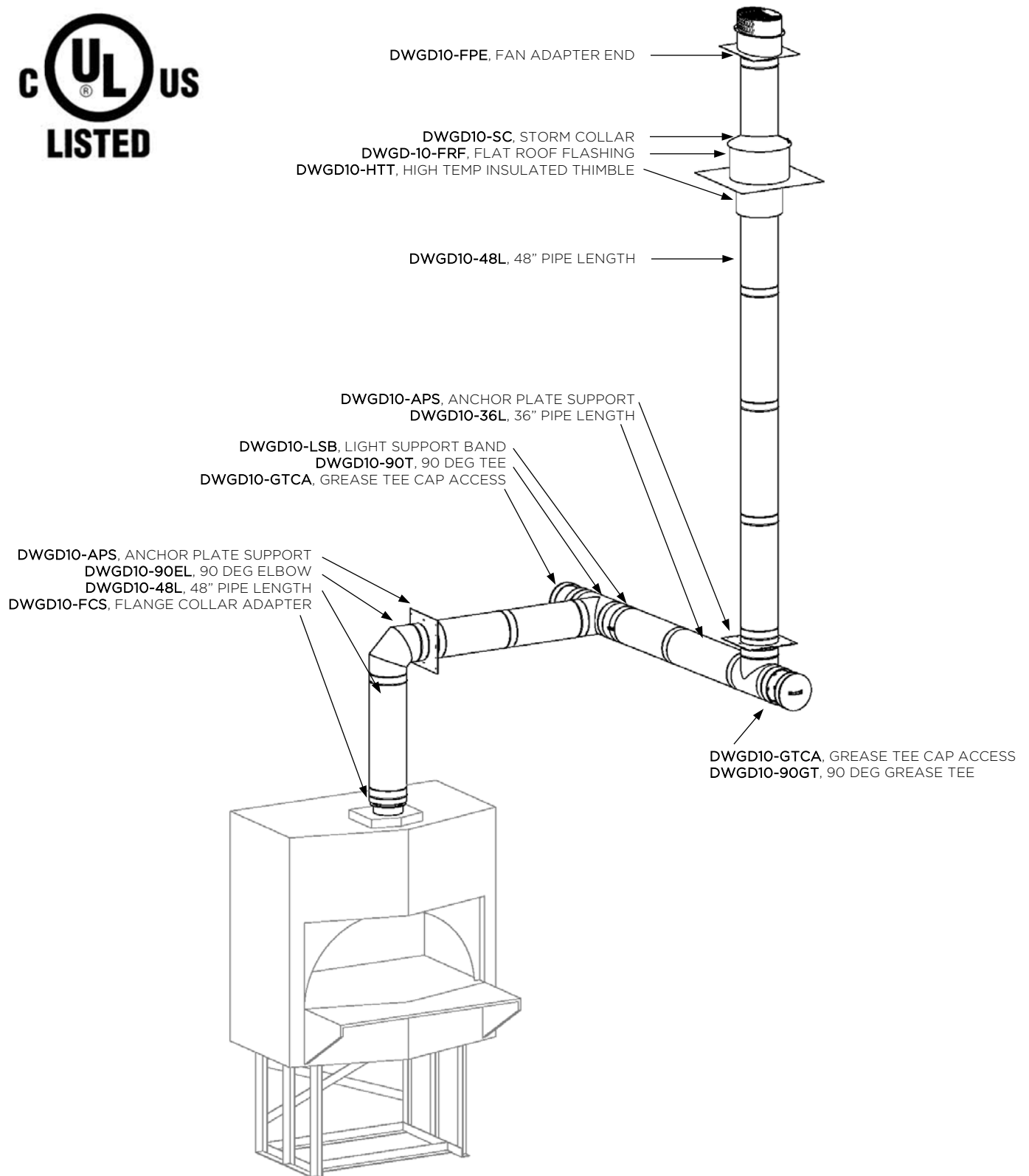
2X 14", INTO 20", 1X 8", INTO COMMON 24" GREASE DUCT



SAMPLE SYSTEMS

PIZZA OVEN CHIMNEY & GREASE DUCT

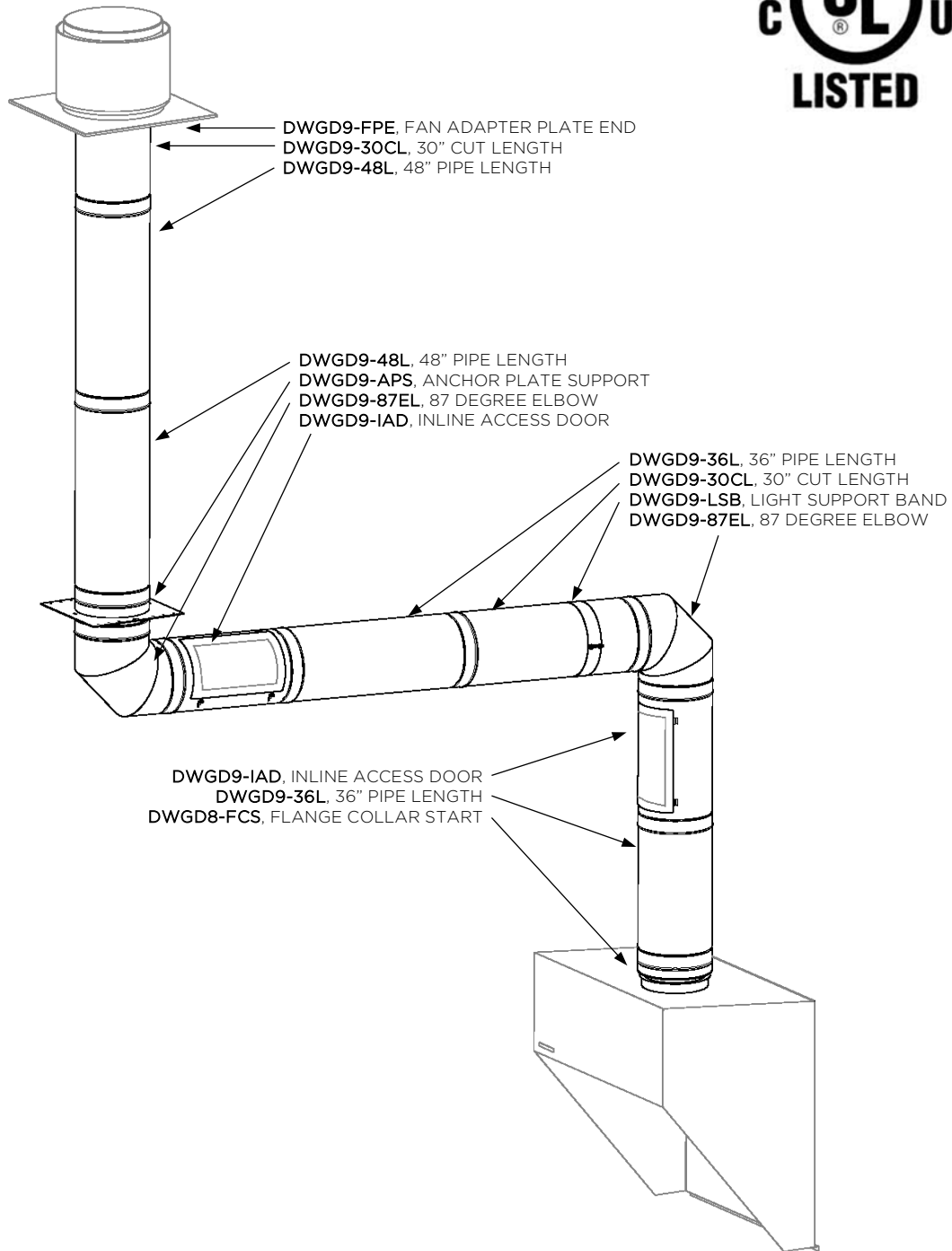
10" I.D. CHIMNEY AND GREASE DUCT



SAMPLE SYSTEMS

STAND-ALONE RESTAURANT EXHAUST

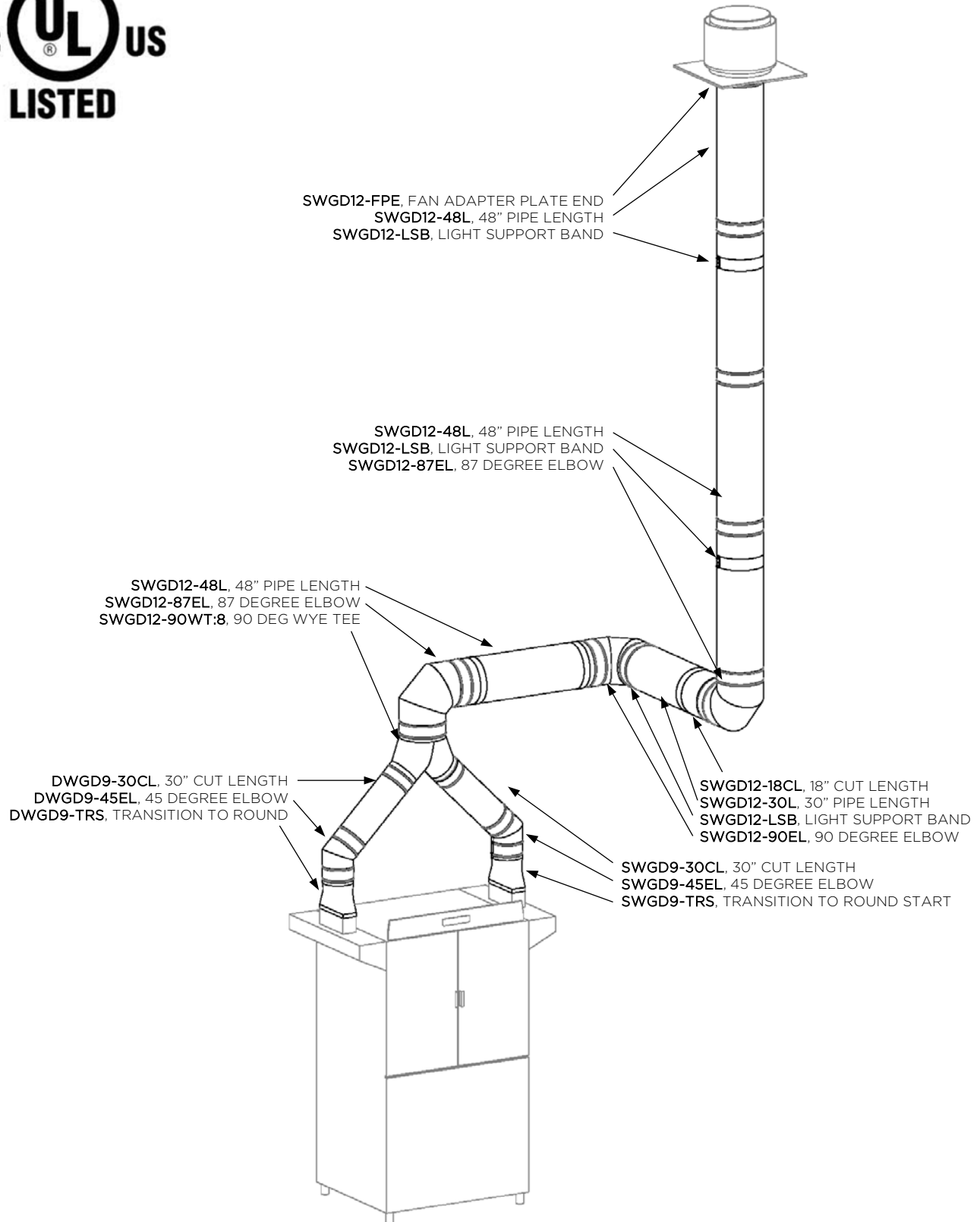
9" I.D. Grease Duct from Wall Mounted Type I Hood



SAMPLE SYSTEMS

COMMERCIAL DISHWASHER EXHAUST

2X 8" INTO 12" I.D. DISHWASHER EXHAUST



WARRANTY STATEMENT – Grease Ducts

I. 1-Year Limited Warranty

Jeremias Inc. (“Jeremias”) provides a 1-year limited warranty (“1-Year Limited Warranty”) for its Grease Ducts models SWGD, DWGD+1, and DWGD-ZC (collectively, the “Products”) for any defect in workmanship or materials under normal use from the date of shipment to the purchaser of Products (“Purchaser”), subject to the following conditions:

- Product sizing and specifications have been performed in accordance with generally accepted engineering practices.
- Correct installation and maintenance in full compliance with Jeremias’ installation and maintenance instructions as published at the time of installation.

II. Limited Lifetime Warranty for Grease Ducts

Jeremias provides for an extended limited lifetime warranty (“Limited Lifetime Warranty”) for any defect in workmanship or materials under normal use from the date of shipment to the Purchaser, subject to the satisfaction of the following conditions:

- Products must have been designed and sized by Jeremias’ personnel.
- Availability of a written inspection report from the time of installation, or timely thereafter, by a Jeremias inspector or an inspector authorized by Jeremias, that the Product assembly and installation conformed to all of Jeremias’ assembly and installation instructions.
- Products were at all times operated and maintained in full compliance with Jeremias’ operation and maintenance instructions as published at the time of installation or as later provided to Purchaser by Jeremias.

For a period of ten (10) years from original installation, Jeremias will provide replacement product to the original owner for the product proven defective with a similar or like quantity of available Jeremias product, free of charge.

From the eleventh (11) through fifteen (15) years Jeremias will provide replacement product to the original owner at a cost of 75% off of the Manufacturers Suggested List Price in effect on the date the claim is received.

At expiration of the fifteen (15) year term, Jeremias will provide replacement product to the original owner at a cost of 50% off of the Manufacturers Suggested List Price in effect on the date the claim is received.

III. Exclusion of Limited Warranty

The 1-Year Limited Warranty and the Limited Lifetime Warranty (collectively the “Limited Warranty”) shall not cover (i) damages to: wear parts, e.g. seals; demonstration units; paintwork; moving parts, including but not limited to compensators, flue gas dampers, draught regulators, chimney, doors; flexible piping; insulation; consumables, such as granulates; minor Product deviations which do not effect functionality; or (ii) damages caused by: contamination of ambient air or combustion air by chlorinated hydrocarbons or other vapors which may cause excessively severe acid condensate to form within the Products; merchandise provided by other manufacturers; installation, transport or commissioning; Purchaser, an installer or other third parties; normal wear and tear; any party other than Jeremias in a willful manner; force majeure, including, but not limited to flood, fire or frost; non-compliance with the assembly, installation, operation and maintenance instructions available at www.JeremiasInc.com; assembly, installation, maintenance or repair by unqualified personnel; improper commissioning; use of Products not in accordance with their intended purpose; exposure of Products to any metals of an inferior quality; contamination of the Products between unpacking and assembly; burning of wood other than unpainted, natural wood, which has been stored for at least 3 years and which moisture level does not exceed 20%; or burning of chipboard or domestic waste.

IV. Remedies

If a valid Limited Warranty claim arises, Jeremias shall, at its sole discretion, either repair the Product or deliver a properly functioning Product. This Limited Warranty is limited to repair or replacement of the Product plus shipping cost to the location of the defective Product. The Limited Warranty does not cover labor costs for removal or replacement of the defective Product, unless such labor shall be carried out by Jeremias itself in its sole discretion.

V. Filing of a Limited Warranty Claim

Limited Warranty claims may only be asserted during the term of the applicable Limited Warranty period. Any extension of the term of the Limited Warranties shall be excluded, regardless of the legal basis. If Purchaser believes that there is a justified Limited Warranty claim, Purchaser shall notify Jeremias to that effect in writing. Any claims stemming from or relating to a Limited Warranty shall be asserted in detail within eight weeks after the discovery of the defect (the time when the notification is received by Jeremias will be the basis for determining whether a claim has been reported within this deadline) or else shall be excluded and not be recognized by Purchaser. Such notification shall include a description of the defect, original proof of purchase, and a copy of the written inspection report as described in Section II above (if applicable).

VI. No Other Warranty

EXCEPT AS SET FORTH EXPRESSLY THEREIN, JEREMIAS MAKES NO WARRANTIES, EITHER EXPRESS OR IMPLIED, REGARDING THE PRODUCTS, INCLUDING, BUT NOT LIMITED TO, THE IMPLIED WARRANTIES OF MERCHANTABILITY AND FITNESS FOR A PARTICULAR PURPOSE.

VII. Damages Disclaimer and Limitation

IN NO EVENT SHALL JEREMIAS BE LIABLE TO ANY CLIENT OR ANY OTHER PERSON FOR ANY (A) INDIRECT, INCIDENTAL, CONSEQUENTIAL OR PUNITIVE DAMAGES, INCLUDING LOSS OF PROFIT OR GOODWILL OR (B) DIRECT DAMAGES TO BODY, HEALTH OR PROPERTY FOR ANY MATTER ARISING OUT OF OR RELATING TO THE PRODUCTS, WHETHER SUCH LIABILITY IS ASSERTED ON THE BASIS OF CONTRACT, TORT OR OTHERWISE EVEN IF JEREMIAS HAS BEEN ADVISED OF THE POSSIBILITY OF SUCH DAMAGES. IN NO EVENT SHALL JEREMIAS’ TOTAL AGGREGATE LIABILITY FOR DAMAGES EXCEED THE GREATER OF (A) TOTAL COMPENSATION PAID BY PURCHASER TO JEREMIAS FOR THE PRODUCTS, OR (B) PROCEEDS AVAILABLE FROM ANY INSURANCE POLICY IN EFFECT AND APPLICABLE TO THE EVENT GIVING RISE TO SUCH LIABILITY.

VIII. Notice

Any notice or other communication hereunder to Jeremias shall be sent postage prepaid, by certified mail, by courier such as United Parcel Service or e-mail, to the following: Jeremias Inc., 983 Industrial Park Drive, Marietta, GA 30062, E-mail: Info@JeremiasInc.com. Notices shall be effective upon receipt.

IX. Terms and Conditions of Sale

Purchaser’s Terms and Conditions of Sale as currently in effect shall govern these Limited Warranties, including without limitation the rights and responsibilities granted hereunder.

WARRANTY STATEMENT - Chimney Systems

I. 1-Year Limited Warranty

Jeremias Inc. ("Jeremias") provides a 1-year limited warranty ("1-Year Limited Warranty") for its Chimney Systems models SWGD and DWGD+1 (collectively, the "Products") for any defect in workmanship or materials under normal use from the date of shipment to the purchaser of Products ("Purchaser"), subject to the following conditions:

- Product sizing and specifications have been performed in accordance with generally accepted engineering practices.
- Correct installation and maintenance in full compliance with Jeremias' installation and maintenance instructions as published at the time of installation.

II. Extended 25-Year Limited Warranty

Jeremias provides for an extended 25-year limited warranty ("25-Year Limited Warranty") for any defect in workmanship or materials under normal use from the date of shipment to the Purchaser, subject to the satisfaction of the following conditions:

- Products must have been designed and sized by Jeremias' personnel.
- Availability of a written inspection report from the time of installation, or timely thereafter, by a Jeremias inspector or an inspector authorized by Jeremias, that the Product assembly and installation conformed to all of Jeremias' assembly and installation instructions.
- Products were at all times operated and maintained in full compliance with Jeremias' operation and maintenance instructions as published at the time of installation or as later provided to Purchaser by Jeremias.

III. Exclusion of Limited Warranty

The 1-Year Limited Warranty and the 25-Year Limited Warranty (collectively the "Limited Warranty") shall not cover (i) damages to: wear parts, e.g. seals; demonstration units; paintwork; moving parts, including but not limited to compensators, flue gas dampers, draught regulators, chimney, doors; flexible piping; insulation; consumables, such as granulates; minor Product deviations which do not effect functionality; or (ii) damages caused by: contamination of ambient air or combustion air by chlorinated hydrocarbons or other vapors which may cause excessively severe acid condensate to form within the Products; merchandise provided by other manufacturers; installation, transport or commissioning; Purchaser, an installer or other third parties; normal wear and tear; any party other than Jeremias in a willful manner; force majeure, including, but not limited to flood, fire or frost; non-compliance with the assembly, installation, operation and maintenance instructions available at www.JeremiasInc.com; assembly, installation, maintenance or repair by unqualified personnel; improper commissioning; use of Products not in accordance with their intended purpose; exposure of Products to any metals of an inferior quality; contamination of the Products between unpacking and assembly; burning of wood other than unpainted, natural wood, which has been stored for at least 3 years and which moisture level does not exceed 20%; or burning of chipboard or domestic waste.

IV. Remedies

If a valid Limited Warranty claim arises, Jeremias shall, at its sole discretion, either repair the Product or deliver a properly functioning Product. This Limited Warranty is limited to repair or replacement of the Product plus shipping cost to the location of the defective Product. The Limited Warranty does not cover labor costs for removal or replacement of the defective Product, unless such labor shall be carried out by Jeremias itself in its sole discretion.

V. Filing of a Limited Warranty Claim

Limited Warranty claims may only be asserted during the term of the applicable Limited Warranty period. Any extension of the term of the Limited Warranties shall be excluded, regardless of the legal basis. If Purchaser believes that there is a justified Limited Warranty claim, Purchaser shall notify Jeremias to that effect in writing. Any claims stemming from or relating to a Limited Warranty shall be asserted in detail within eight weeks after the discovery of the defect (the time when the notification is received by Jeremias will be the basis for determining whether a claim has been reported within this deadline) or else shall be excluded and not be recognized by Purchaser. Such notification shall include a description of the defect, original proof of purchase, and a copy of the written inspection report as described in Section II above (if applicable).

VI. No Other Warranty

EXCEPT AS SET FORTH EXPRESSLY THEREIN, JEREMIAS MAKES NO WARRANTIES, EITHER EXPRESS OR IMPLIED, REGARDING THE PRODUCTS, INCLUDING, BUT NOT LIMITED TO, THE IMPLIED WARRANTIES OF MERCHANTABILITY AND FITNESS FOR A PARTICULAR PURPOSE.

VII. Damages Disclaimer and Limitation

IN NO EVENT SHALL JEREMIAS BE LIABLE TO ANY CLIENT OR ANY OTHER PERSON FOR ANY (A) INDIRECT, INCIDENTAL, CONSEQUENTIAL OR PUNITIVE DAMAGES, INCLUDING LOSS OF PROFIT OR GOODWILL OR (B) DIRECT DAMAGES TO BODY, HEALTH OR PROPERTY FOR ANY MATTER ARISING OUT OF OR RELATING TO THE PRODUCTS, WHETHER SUCH LIABILITY IS ASSERTED ON THE BASIS OF CONTRACT, TORT OR OTHERWISE EVEN IF JEREMIAS HAS BEEN ADVISED OF THE POSSIBILITY OF SUCH DAMAGES. IN NO EVENT SHALL JEREMIAS' TOTAL AGGREGATE LIABILITY FOR DAMAGES EXCEED THE GREATER OF THE AMOUNT OF (A) TOTAL COMPENSATION PAID BY PURCHASER TO JEREMIAS FOR THE PRODUCTS, OR (B) PROCEEDS AVAILABLE FROM ANY INSURANCE POLICY IN EFFECT AND APPLICABLE TO THE EVENT GIVING RISE TO SUCH LIABILITY.

VIII. Notice

Any notice or other communication hereunder to Jeremias shall be sent postage prepaid, by certified mail, by courier such as United Parcel Service or e-mail, to the following: Jeremias Inc., 983 Industrial Park Drive, Marietta, GA 30062, E-mail: Info@JeremiasInc.com. Notices shall be effective upon receipt.

IX. Terms and Conditions of Sale

Purchaser's Terms and Conditions of Sale as currently in effect shall govern these Limited Warranties, including without limitation the rights and responsibilities granted hereunder.

This image shows a blank sheet of white paper with horizontal ruling lines. The lines are evenly spaced and run across the width of the page. There are no margins, text, or other markings on the paper.



Jeremias SUBMITTAL_GD - 08-24-2018