



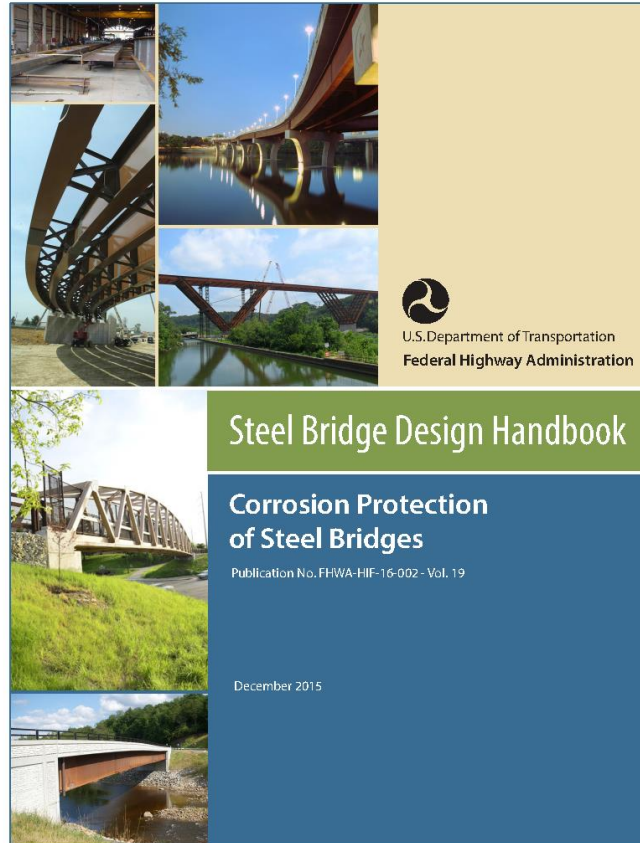
Modern Corrosion Protection Systems (Part 1)

Jeff Carlson



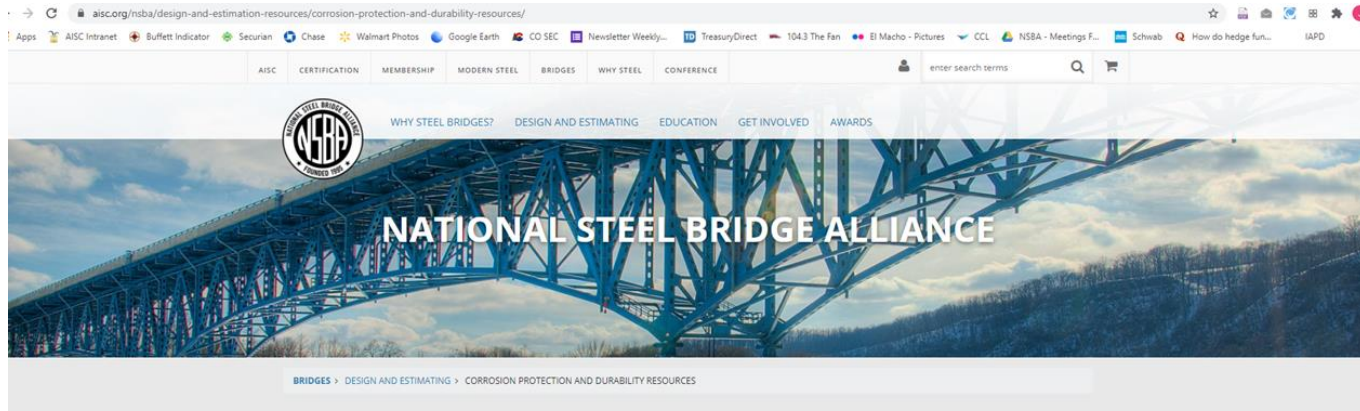
Smarter.
Stronger.
Steel.

FHWA – SBDH, Volume 19



NSBA Webpage

Go to: aisc.org/nsba/corrosionprotection



Corrosion Protection and Durability Resources

There are several proven ways to protect steel bridges from corrosion, and no single solution is best for all circumstances.

The first consideration when selecting one of these techniques is, of course, a bridge's anticipated exposure to corrosive elements over its lifetime. In addition, teams must consider initial and life-cycle costs, fabrication, productivity, and long-term performance and maintenance when choosing a corrosion protection approach for a given bridge.

General resources:

- **Volume 19 of The FHWA Steel Bridge Design Handbook** focuses on corrosion protection.
- **AASHTO's National Transportation Product Evaluation Program (NTPEP)** offers a **wealth of information** about various structural steel coatings.
- **The Society for Protective Coatings (SSPC)** issues and maintains many coating standards, including the **SSPC Good Painting Practice and Systems and Specifications Manuals**. Both the SSPC and the **National Association of Corrosion Engineers (NACE)** provide training and certification for coatings inspectors as well as coating contractors. These certifications help establish a quality threshold for the coatings industry.



Photo: Eads Bridge Over the Mississippi River, St. Louis, Missouri

Mitigation Strategies for Steel Bridges

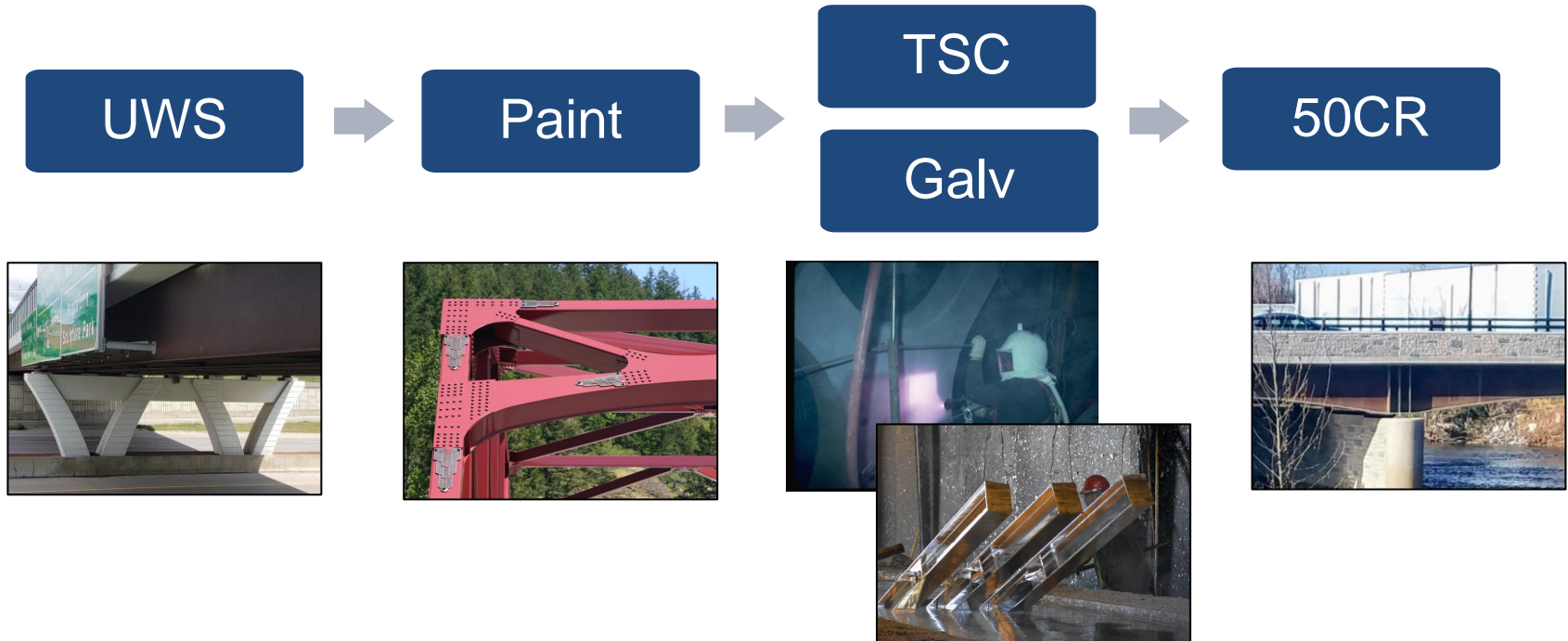
What's Right For you?

- Uncoated Weathering Steel (UWS)
- Liquid Applied Coatings
- Thermal Spray Coatings (TSC, aka - Metallizing)
- Hot-Dip Galvanizing (HDG)
- A709-50CR (previously known as A1010)



The Default System

- Start with the least cost. Move to the next system if there is a compelling reason to do so!



Uncoated Weathering Steel (UWS)

Grade	Yield Strength (ksi)
36	36
50	50
50S	50
50W	50
HPS 50W	50
HPS 70W	70
HPS 100W	100
50CR	50
QST 50	50
QST 50S	50
QST 65	65
QST 70	70

From ASTM A709

- Grade designations ending in “W” are weathering grades.
 - They develop a stable patina that provides barrier corrosion protection
 - The patina controls the rate that oxygen can reach the bare steel underneath

Uncoated Weathering Steel (UWS)



Provides “barrier” protection



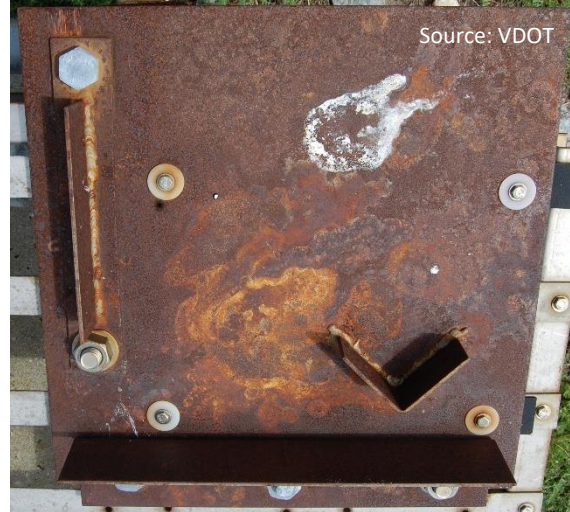
Well formed patina has a dark-chocolate, almost purple hue. Also has fine pinholes.

ASTM A709-50CR

- ~11% chrome
- Ferrite / tempered martensite (formally it's a martensitic stainless steel)
- Develops a brown colored patina like weathering steel



6yr. exposure
McLean, VA (vertical)



3 yr. exposure Hampton
Roads, VA (horizontal)

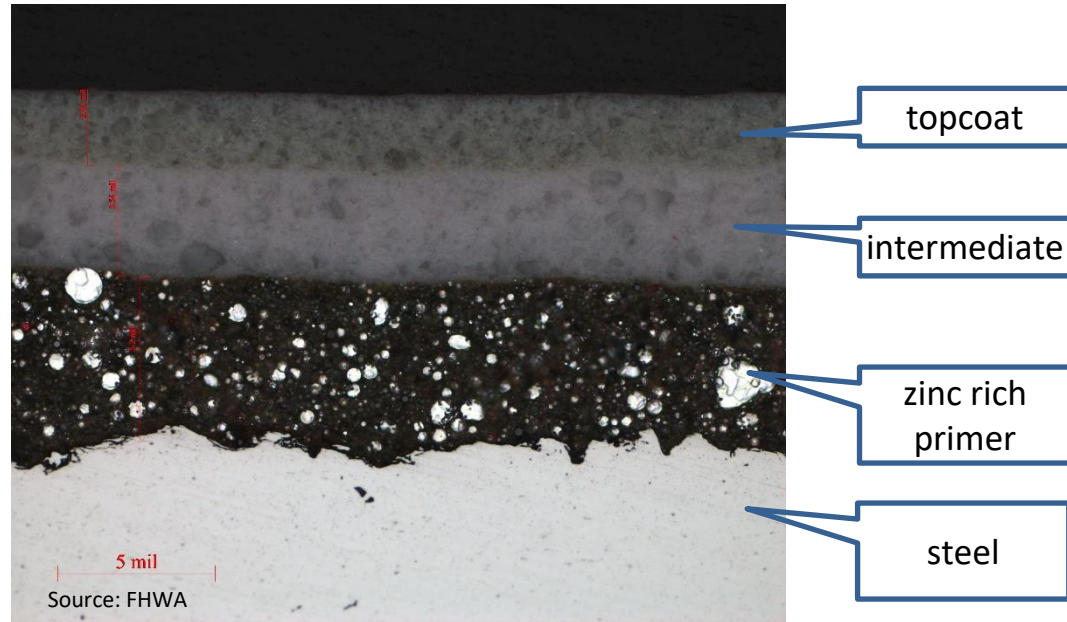


9 mo. And 3 yr. (inset)
exposure North Topsail, NC
(vertical)

Modern Liquid Applied Coatings

Types & Definitions:

- IOZ – Inorganic Zinc Primer
- OZ – Organic Zinc Primer
- E – Epoxy (intermediate coat)
- U – Urethane (topcoat)



The Misperception Dilemma

Whittier Bridge - Massachusetts



This bridge utilized the old lead paint systems prior to implementation of current practices.

The Colorful History of Steel Bridge Paint Systems



1960 - 1977



Lead (Alkyd) Paints Widely Used

1990 - 2021



**Modern Systems
Widely Adopted**

1960

1967

1974

1981

1988

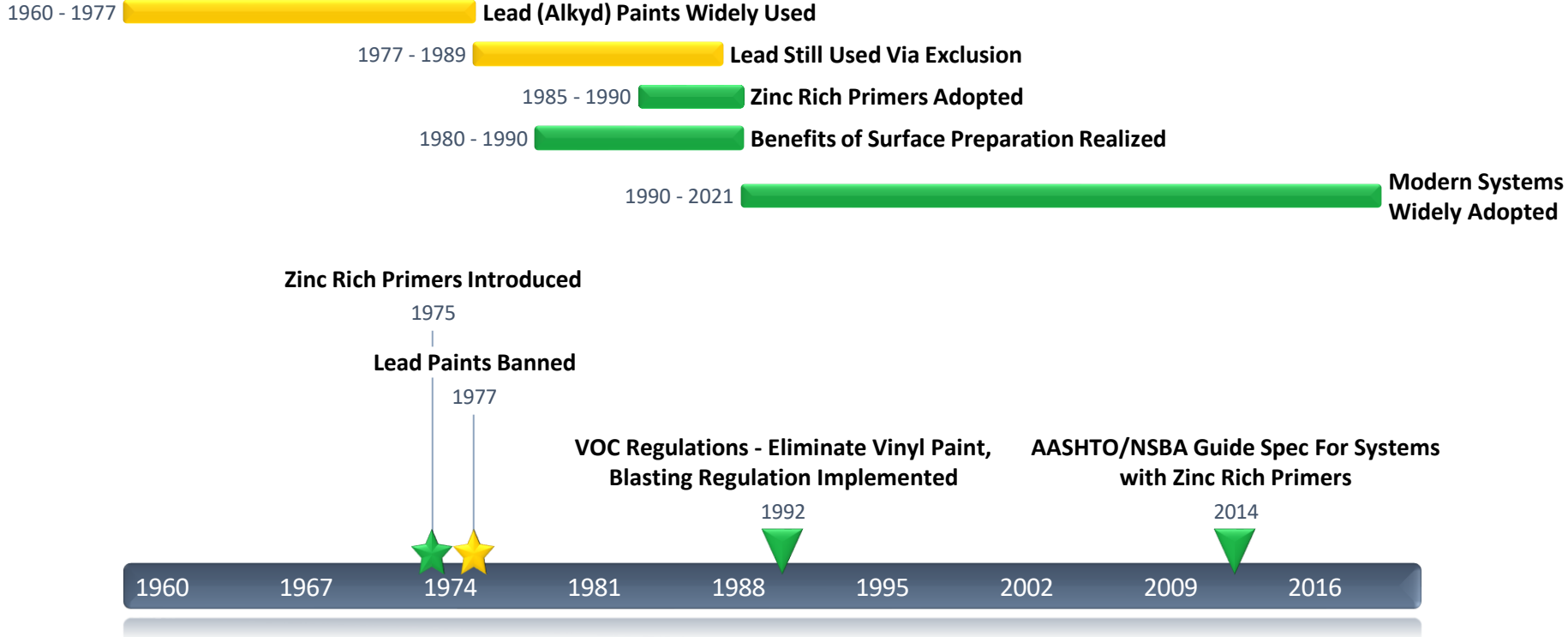
1995

2002

2009

2016

The Colorful History of Steel Bridge Paint Systems



Old Liquid Applied Coatings



Modern Liquid Applied Coatings



This bridge utilized a modern 3-coat paint system. Built in 1998.

Liquid Applied Coatings

- Primarily “barrier” protection, however zinc-rich primer provides “cathodic” protection if exposed

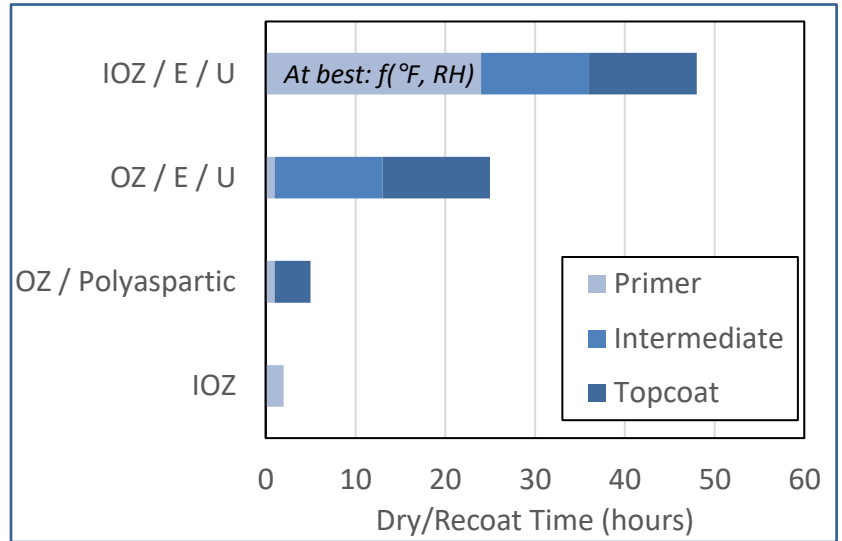
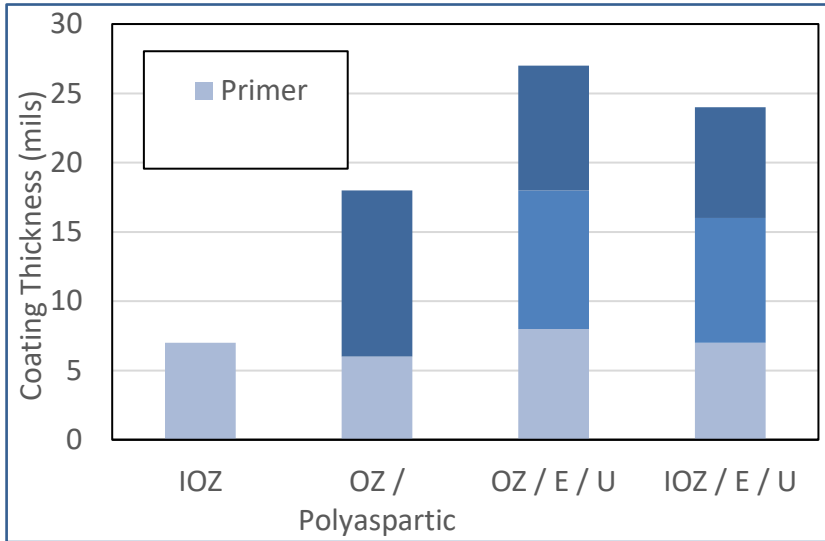


Source: Chris Stuvek

Liquid Applied Coatings – Cost Implications



Consult With
Local Fabricator



Source:
Random selection of qualified systems from <http://data.ntpep.org/SSC>
(except for single-coat IOZ)

Source:
Medlock, R. (2020). "Two-Coat OZ/Polyaspartic Topcoat System for New Bridge Construction. Presentation delivered to Subcommittee AHD30(2), Annual Meeting of the Transportation Research Board.

Liquid Applied Coatings

Workhorse systems

- 3-coat, OZ/Epoxy/Urethane
- 3-coat, IOZ/Epoxy/Urethane

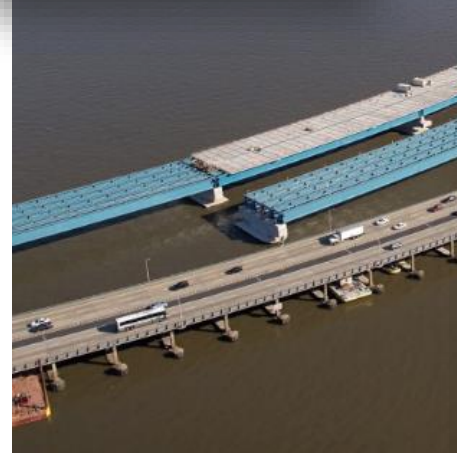
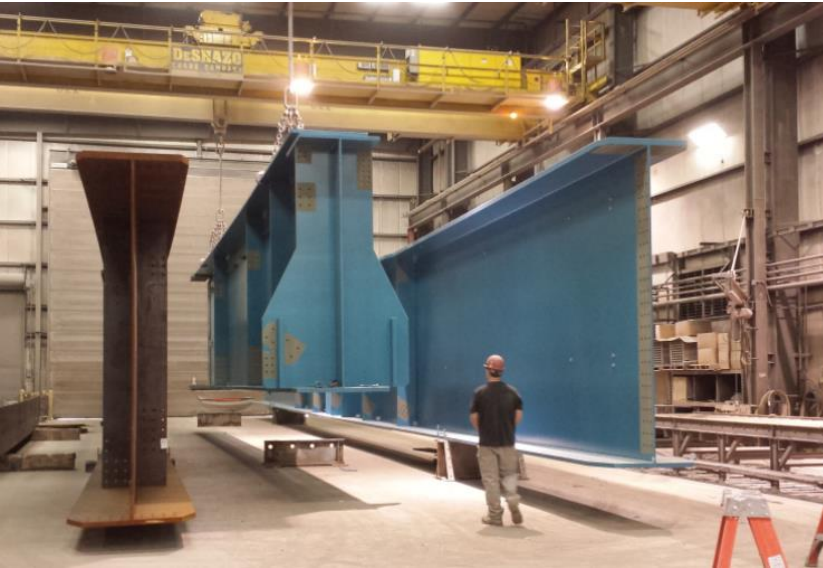
Innovative systems

- IOZ only
- IOZ with acrylic topcoat
- 2-coat, OZ/polyaspartic



Tappan Zee Replacement

- Considered metalizing, IOZ, OZ
- Chose OZ due to time savings



Thermal Spray Coatings (TSC) – aka Metallizing

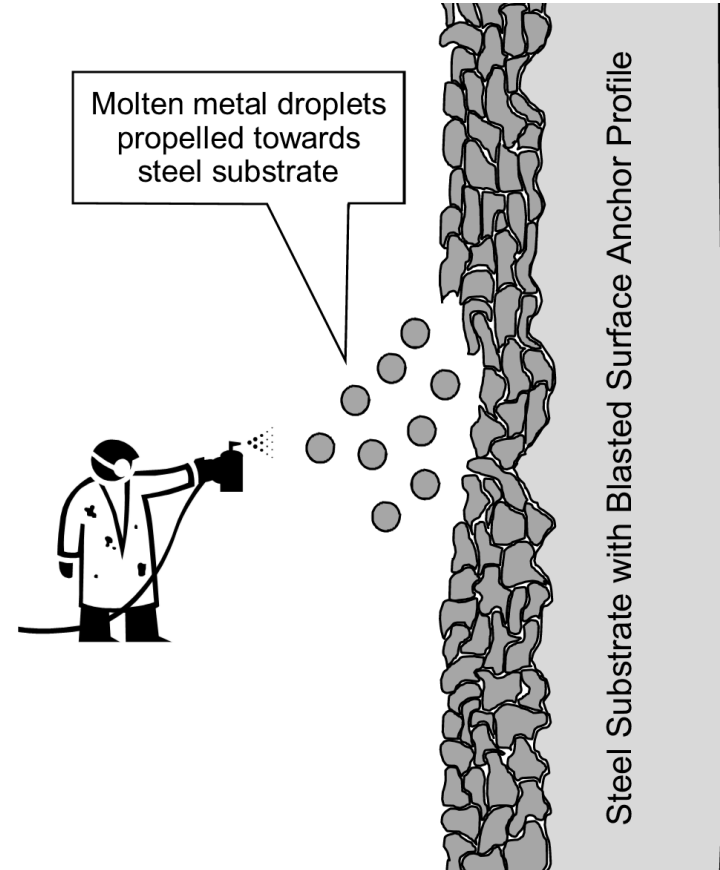


Common Alloys

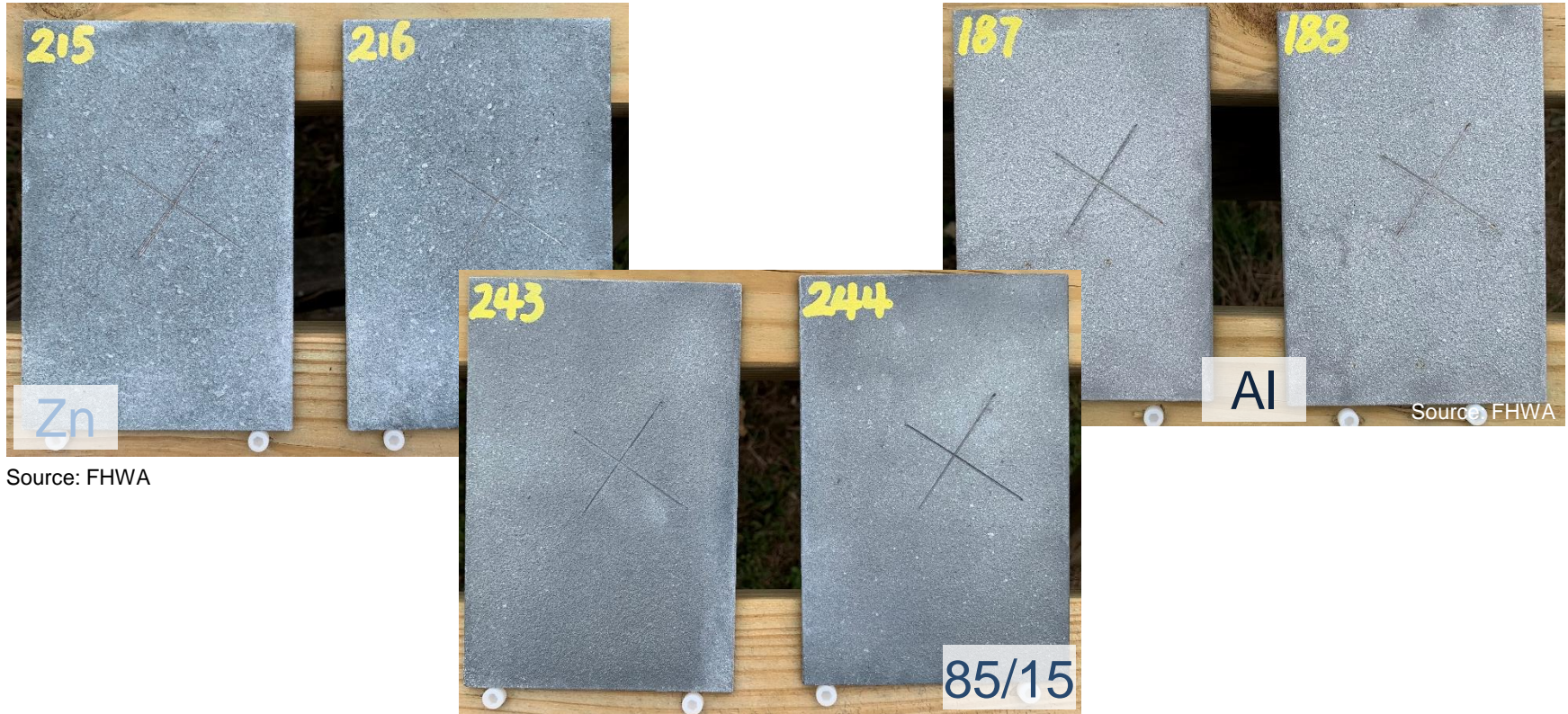
Aluminum (Al)

85/15 (Zn/Al) ----- Most common

Zinc (Zn)



Thermal Spray Coatings (TSC)

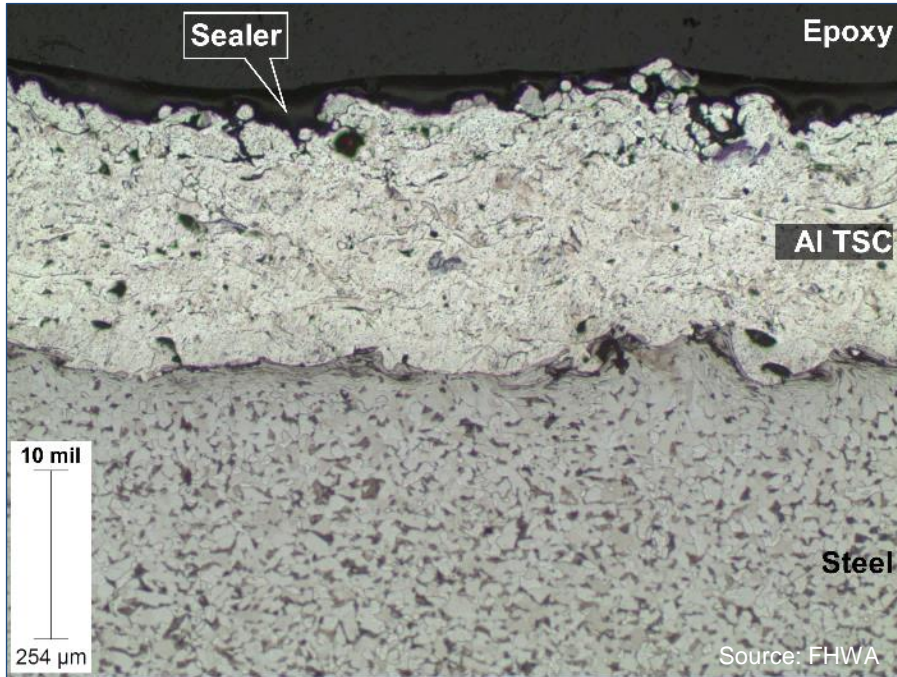


Source: FHWA

Source: FHWA

Source: FHWA

Thermal Spray Coatings (TSC)

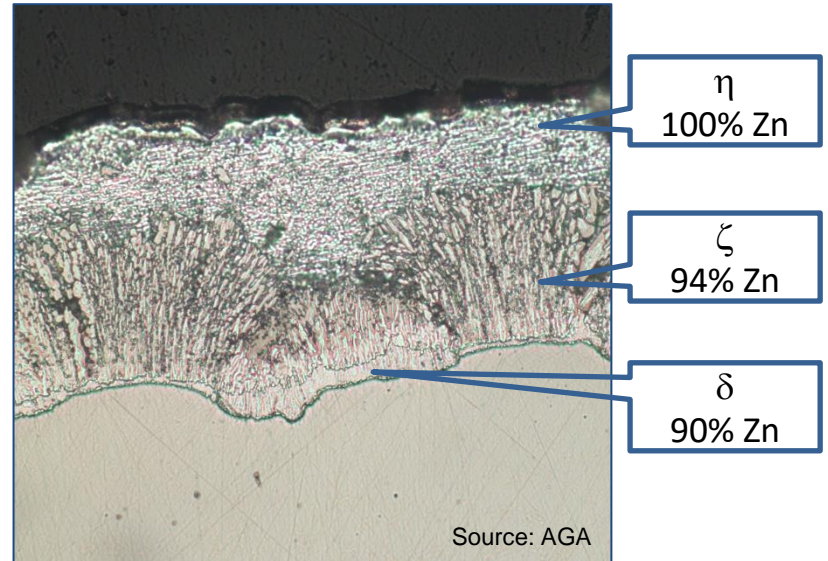


- TSC are porous – sealing is common, but not necessary
- Sealers are low-viscosity, liquid applied coatings meant to penetrate through pores
- Mechanical process, whereas HDG is chemical process

Mostly “cathodic” protection

Hot-Dipped Galvanizing

- Dipping steel in $\sim 830^{\circ}\text{F}$ zinc creates the chemical bond



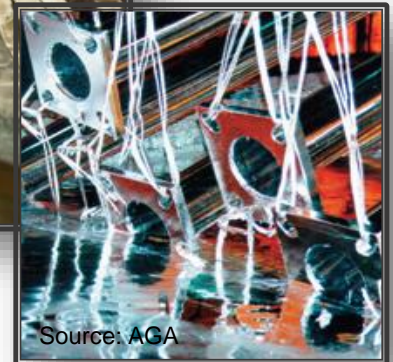
Both “barrier” and “cathodic” protection

Hot-Dipped Galvanizing

- Steel immersed in bath (kettle) of molten zinc (~830 F)
- Bath chemistry >98% pure zinc
 - Up to 2% additives (Al, Bi, Ni)
- Molten zinc reacts with iron in steel to form metallurgically-bonded coating
- Reaction is complete when steel reaches bath temperature



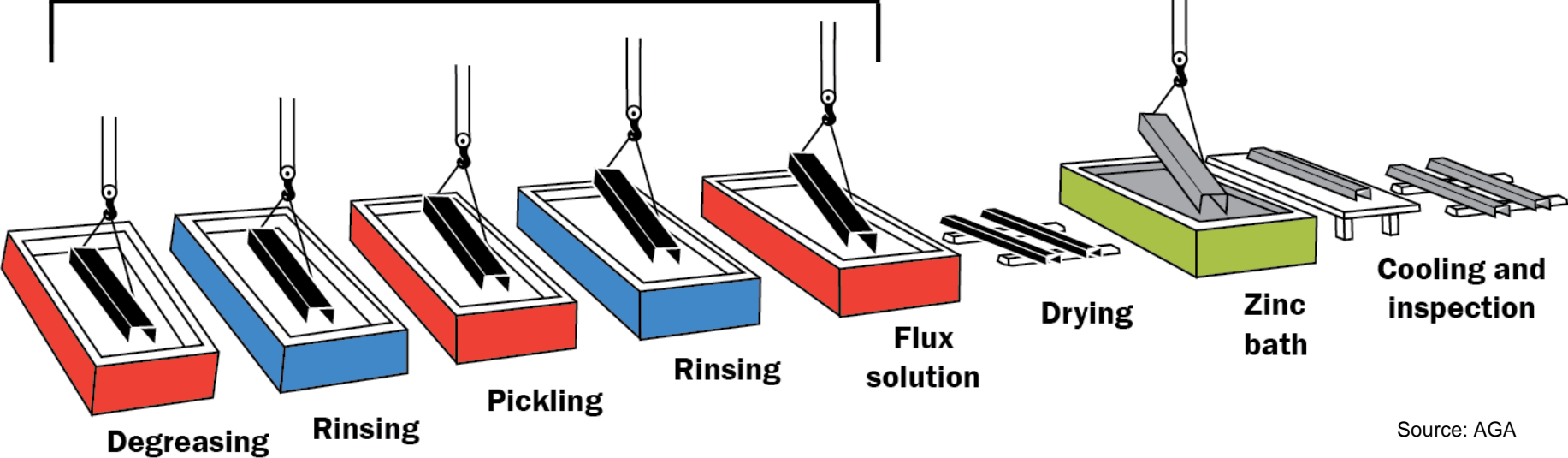
Source: AGA



Source: AGA

Hot-Dipped Galvanizing

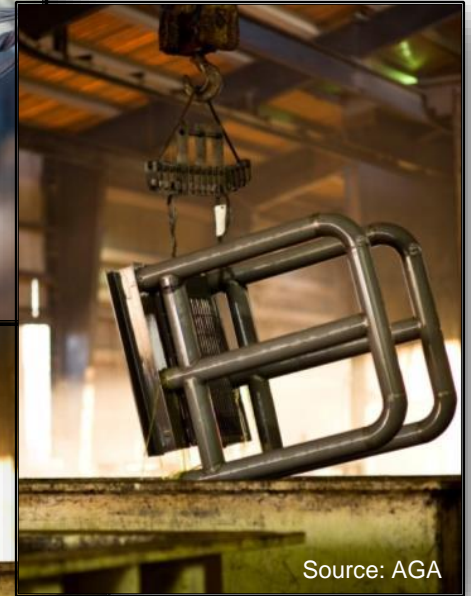
Surface Preparation



Source: AGA

Hot-Dipped Galvanizing – Surface Preparation

- Thorough cleaning is necessary as zinc will only react with clean steel
- Three cleaning solutions:
 - **Degreasing** – removes dirt, oils, organic residue
 - **Pickling** – removes mill scale and oxides
 - **Fluxing** – mild cleaning, protective layer
- Unclean areas will not grow zinc coating





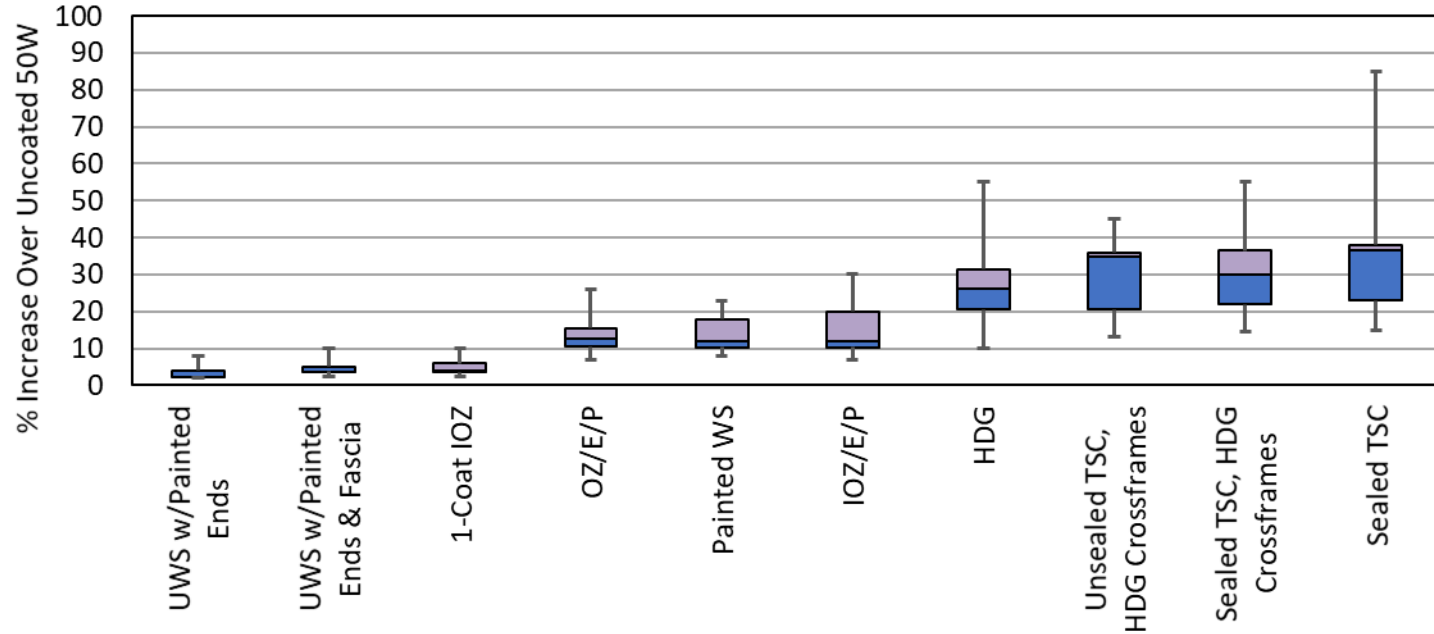
Relative Cost of Coating Systems



Smarter.
Stronger.
Steel.

2020 Cost of Coatings Survey

Relative % cost increase* over ASTM A709 Grade 50W (unpainted)

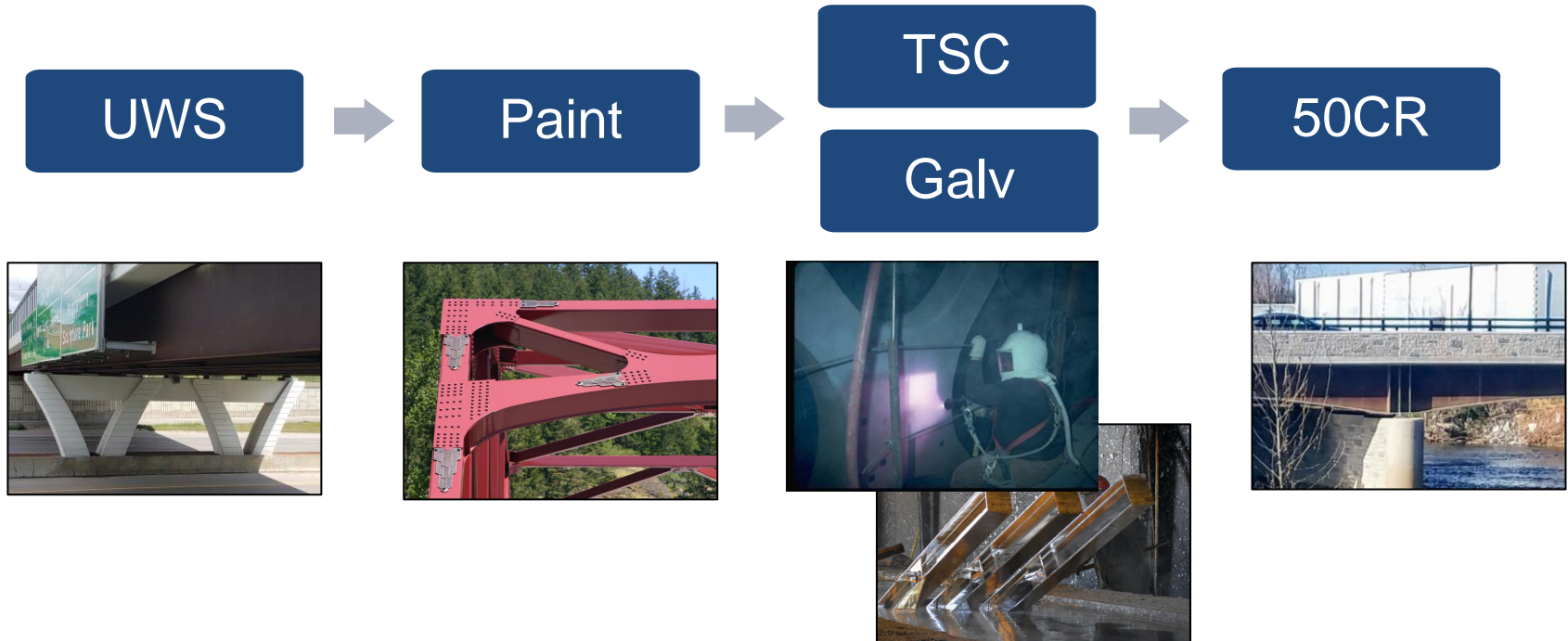


Note: VERY important to know the capability and expertise of the local fabricators regarding TSC!!!

* - defined as FOB cost delivered to jobsite.

Recall.....The Default System

- Start with the least cost. Move to the next system if there is a compelling reason to do so!



Cost of Corrosion Protection Example



Total Length = 350 ft (2-175 ft spans)

Width = 60 ft

Total Area = 350 ft x 60 ft = 21,000 ft²

Example (cont)

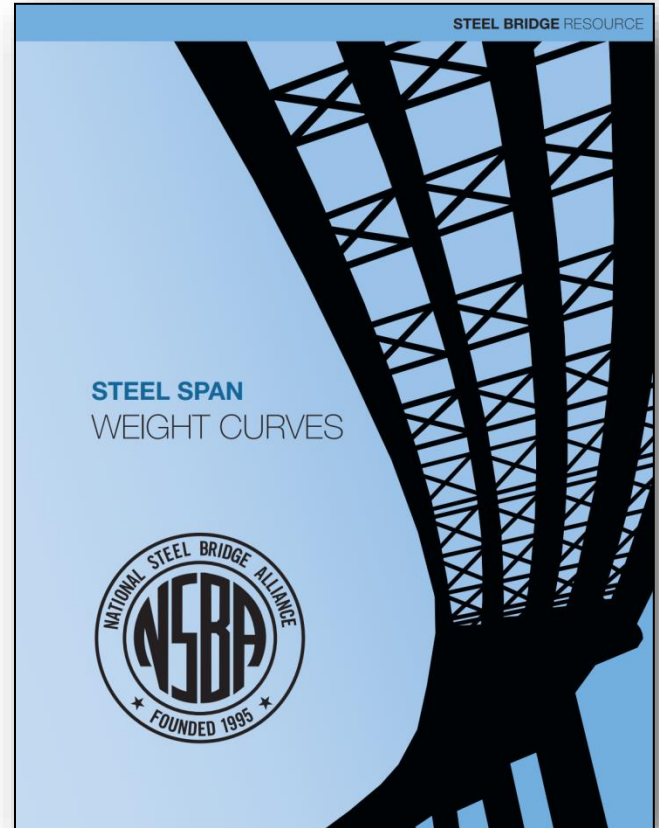
Using NSBA Span/Weight Curves:

Assuming: 2-span, 9' to 11' girder spacing,
175' span length, routine fabrication

➔ Weight of steel = 35 psf

Total weight of steel = 21,000 ft² x 35 psf

➔ 735,000 lbs = 368 tons



Example (cont)



For straight, routine, steel bridge – for illustration purposes.....assume \$1.00/lb (UWS) for fabrication and delivery

➡ 735,000 lbs x \$1.00/lb = \$735,000 cost of steel for fab and delivery

Example (cont)

Compare to other systems

- UWS Cost = \$735,000 (baseline)

System	% Inc	\$/lb	\$ Steel	Diff from Baseline
SIOZ	6%	\$1.06	\$779,000	\$44,000
OZ/E/P*	13%	\$1.13	\$831,000	\$96,000
TSC/HDG	30%	\$1.30	\$956,000	\$221,000

* - IOZ/E/P is an approximate 16% increase over UWS



Thank you

Jeff Carlson

720.440.3011 – carlson@steelbridges.org



**Smarter.
Stronger.
Steel.**