



MODERN HOMES

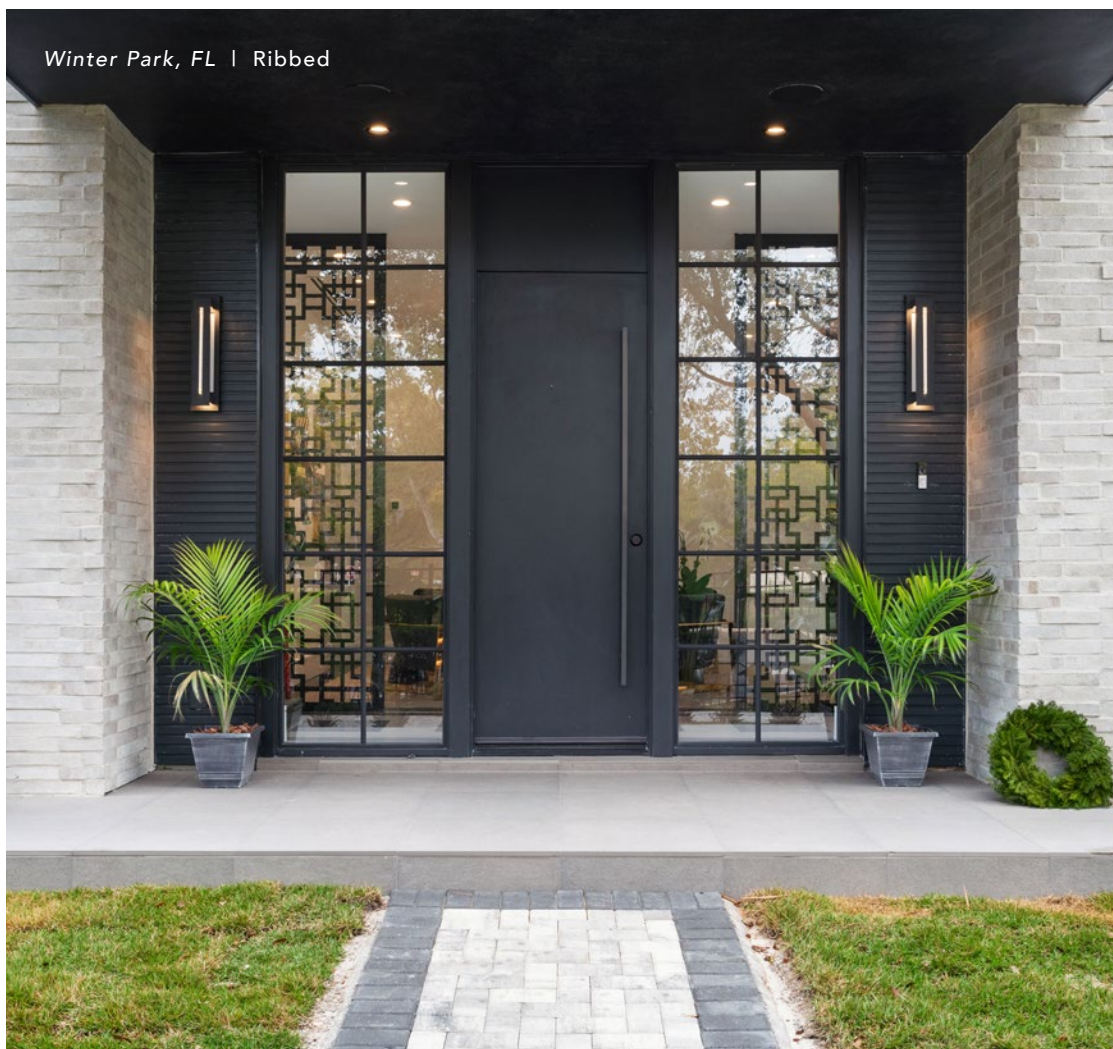
LB LOOK
BOOK

volume 3



**TO BE MODERN IS NOT
A FASHION, IT IS A STATE.
IT IS NECESSARY TO
UNDERSTAND HISTORY, AND HE
WHO UNDERSTANDS HISTORY
KNOWS HOW TO FIND CONTINUITY
BETWEEN THAT WHICH WAS,
THAT WHICH IS, AND THAT
WHICH WILL BE.**

LE CORBUSIER



DESIGNS THAT WELCOME YOU AT THE FRONT DOOR

More than a point of entry, the front door is the focal point of a home's exterior and is a prelude to its personality. To make a statement and accentuate a home's modern style, choose a sleek design with a bold color like this matte black finish.

HEAD-TURNING EXTERIORS

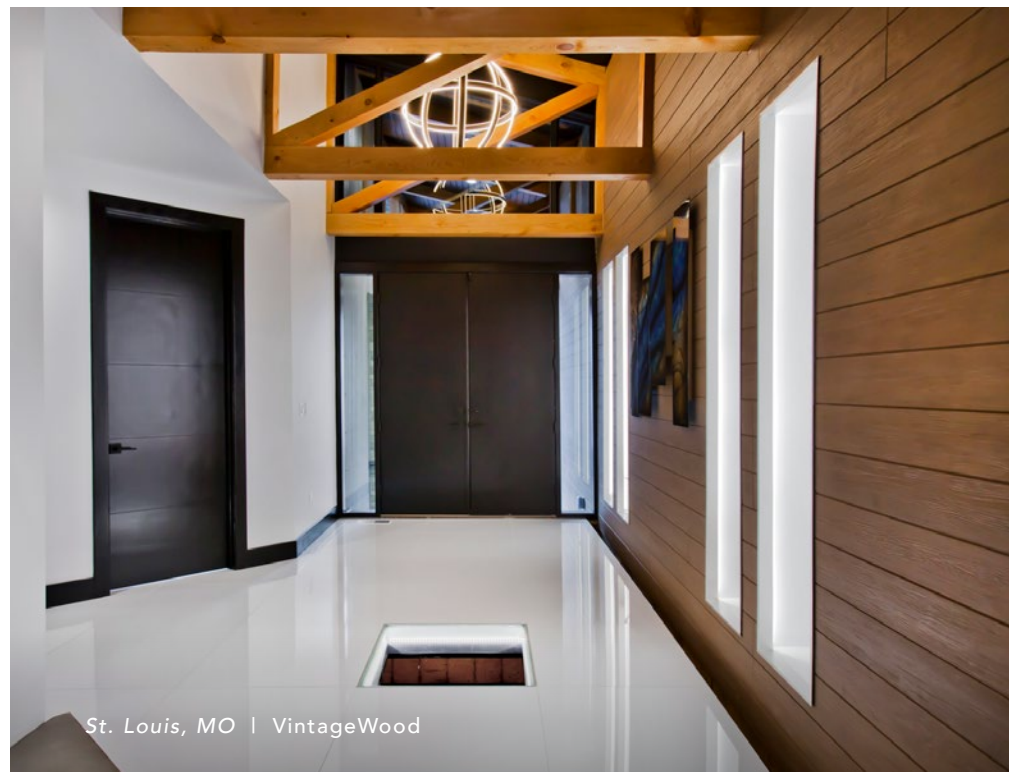
No need for elaborate embellishments. Modern homes showcase the beauty of essential materials, like wood, concrete and glass. Exacting angles and rectangular forms develop dramatic appeal that captivates visitors from the curb to the front door.



Your dream home should be dependable and timeless:
NICHHA.COM/BLOG/CHOOSING-FIBER-CEMENT-BOARD-SIDING-FOR-YOUR-FOREVER-HOME

INVITE MODERN DESIGN INSIDE

What better way to complement your exterior design than bringing those design cues inside? Seamlessly integrate your exterior design by continuing your cladding in entryways. Use wood, metal or fiber cement to create an accent wall or stone detailing to add a natural element to your fireplace.





Berkeley, CA | EmpireBlock



Asheville, NC | Savannah Smooth

INSPIRED BY HERITAGE

When California resident Sasaki Momoe transformed her traditional ranch-style house (above), she drew inspiration from her Japanese heritage. Channeling the clean, simple lines of urban architecture in Tokyo led her to the look of concrete, and Nichiha's EmpireBlock was the perfect fit for her home—both inside and out.



To learn more about this project, visit WWW.NICHIHA.COM/BLOG/QA-SASAKI-MOMOE



MIXING IS ENCOURAGED

Pair distinct, contrasting looks to achieve an elevated aesthetic and create visual interest. Seemingly austere materials like concrete or stone blend with warm wood tones to create a refined look that exudes confidence and style.

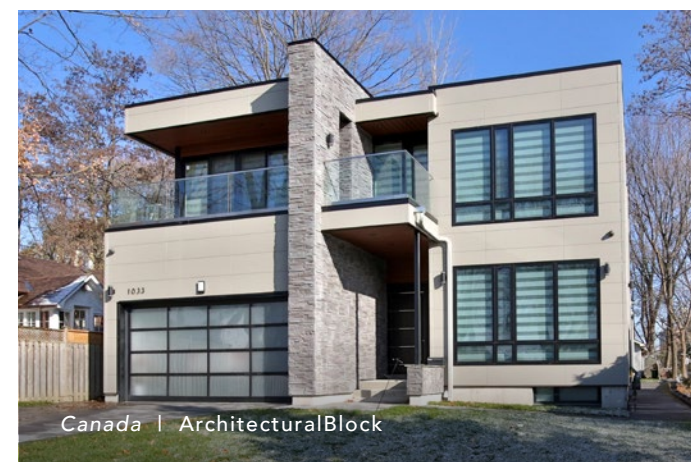


Jacksonville Beach, FL | IndustrialBlock, TuffBlock + VintageWood

To learn more about the popularity of texture mixing, visit NICHHA.COM/BLOG/TEXTURE-MIXING-WHY-ALL-THE-COOL-KIDS-ARE-DOING-IT



Winter Park, FL | EmpireBlock + Ribbed



Canada | ArchitecturalBlock

MIX IT UP

Modern architecture can sometimes feel cold and stark, but adding warm materials like wood or even breaking up the design with a stone feature can captivate guests' attention.

CONCRETE EXPRESSIONS

The use of concrete in modern architecture became popular in the mid 1900's especially with the New Brutalist style. Architects such as Le Corbusier, Tadao Ando and Louis Kahn used concrete to explore new realms of design and construction. Today, designers can get the same monolithic, minimalist aesthetic with more budget- and environmentally-friendly materials such as fiber cement.



Vancouver, Canada | EmpireBlock



Stanwood, WA | IndustrialBlock

WEST COAST STYLE



To learn more about why one homeowner chose Nichiha for her modern home vision, visit NICHHA.COM/CASE-STUDY/BUILDING-A-MODERN-HOME-ON-THE-WEST-COAST

LET THE LIGHT IN

Windows are a critical element of modern architecture. They invite natural light in to make spaces feel larger and allow the interior to mingle effortlessly with the outside world. Windows carefully create an airy mood and atmosphere through masterful framing.



**A ROOM IS NOT
A ROOM WITHOUT
NATURAL LIGHT.**

LOUIS KHAN

ANGLED VIEWS ON MODERN DESIGN

Roofs are among the most iconic elements of modern homes, characterized by flat, linear designs that add subtle sophistication and provide greater flexibility for creating interior spaces. Butterfly, skillion and other asymmetrical roofs add a daring design element to the home, while low-pitch roofs offer the familiarity of traditional styles without compromising the modern appeal.



Minneapolis, MN | ArchitecturalBlock



Canada | Illumination



**ARCHITECTURE IS A VISUAL ART AND
THE BUILDINGS SPEAK FOR THEMSELVES.”**

JULIA MORGAN



THE WORLD OUTSIDE YOUR DOOR

Modern home exteriors should be complemented by equally-engaging outdoor spaces. The home's architectural details can be amplified by mixing textures and contrasting colors and more visual interest created with inspired landscaping, lighting and even furniture.



Watch this interview with architect Phil Kean as he discusses why he chose Nichiha for his design for the New American Home 2021.

A PLACE TO GATHER
Create a space for guests to gather by incorporating conversational furniture with interesting shapes and colorful, plush pillows. Up the elegance by adding a focal point such as a fireplace.



Daniel Island, SC | Savannah Smooth



OUR CLIENTS ARE LOOKING FOR MODERN, OPEN FLOOR PLANS AND A STRONG CONNECTION TO THE OUTDOOR SPACE IS REALLY IMPORTANT FOR THEM.

ROB SMITH, CGC, LEED AP
OWNER / E2 HOMES

THE NEW AMERICAN REMODEL 2021 | Built in 1973, the original home's architect took his cues from Frank Lloyd Wright. The mid-century modern lakefront home was completely renovated both inside and out. It features six bedrooms and bathrooms and ample outdoor entertaining spaces with a pool and lanai. [Watch this video to learn more.](#)

Winter Park, FL | VintageWood



Nashville, TN | VintageWood + IndustrialBlock



Japan | Miraia



California | VintageWood

FEELING INSPIRED?

Whether you're a custom home builder, architect or someone looking to create their own dream home, we hope you've found inspiration for your designs. At Nichiha, we believe in the power of possibilities, and we offer a wide range of design styles backed by the strength and durability of fiber cement.

For more information about our full line of products or to view some of our favorite projects, visit us online by clicking below:

[NICHIHA.COM](https://www.nichiha.com)

[CONTACT A REP](#)

[GALLERY](#)

[PRODUCTS](#)



6465 E. JOHNS CROSSING, SUITE 250
JOHNS CREEK, GA 30097
PHONE: 770.805.9466 | FAX: 770.805.9467
TOLL FREE: 1.86.NICHIHA.1 (1.866.424.4421)

NICHHA.COM