

# FREIGHT ELEVATOR / GOODS LIFT

## MODERNIZATION / UPGRADES

312



**THE PEELLE COMPANY**  
34 E. Main Street, #372, Smithtown, NY 11787

**THE PEELLE COMPANY LTD**  
195 Sandalwood Parkway West, Brampton, ON L7A 1J6

REPRESENTATIVES IN GERMANY, FRANCE, MIDDLE EAST, SINGAPORE & THE UK

1 800 787 5020  
1 905 846 4545  
SALES@PEELLEDOR.COM  
PEELLEDOR.COM

SEPT 2020



# Modernization Guide

**THE PEELLE COMPANY Ltd.**  
 195 Sandalwood Pkwy. W.  
 Brampton, Ontario L7A 1J6 Canada  
 1-905-846-4545 • 1-800-787-5020  
**FAX: 1-905-846-2161**  
**E-mail: exportsales@peelldoor.com**

Date: \_\_\_\_\_

**CUSTOMER DATA:**

**JOB SITE DATA:**

Company: \_\_\_\_\_

Job Name: \_\_\_\_\_

Address: \_\_\_\_\_

Location: \_\_\_\_\_

Contact Person: \_\_\_\_\_

Elevator# \_\_\_\_\_ Building \_\_\_\_\_

Phone: \_\_\_\_\_

FAX: \_\_\_\_\_

E-mail: \_\_\_\_\_

Quote Needed By: \_\_\_\_\_ Estimated Ship Date: \_\_\_\_\_

Original Manufacturer:  PEELLE (Indicate PEELLE Job number) \_\_\_\_\_

Peelle Job Number is located on Door Controller and on door guide rails.

Courion  
1986

EMS  
1986

Guilbert  
1953-1987

Harris Preble  
1956-1992

Otis  
1947-1982

Security  
1920-1985

Car Capacity: \_\_\_\_\_ Class of Loading(A, B, C1, C2, C3): \_\_\_\_\_

Existing Hoistway Doors: Manual \_\_\_\_\_ Power \_\_\_\_\_ Quantity of Openings: Front \_\_\_\_\_ Rear \_\_\_\_\_

Door Openings Size: Width \_\_\_\_\_ Height \_\_\_\_\_ Existing Car Gate Size: Width \_\_\_\_\_ Height \_\_\_\_\_

Single-Section \_\_\_\_\_ Two-Section \_\_\_\_\_

Shaft/Hoistway Conditions:

- NEMA 1/IP10 Normal
- NEMA 4/IP54/IP56 Moisture
- NEMA 4X/IP56 Corrosion
- NEMA 7/9 Explosion
- NEMA 12/IP52 Dust-Industrial

Control Room Conditions:

- NEMA 1/IP10 Normal
- NEMA 4/IP54/IP56 Moisture
- NEMA 4X/IP56 Corrosion
- NEMA 7/9 Explosion
- NEMA 12/IP52 Dust-Industrial

Power Supply: \_\_\_\_\_ V, \_\_\_\_\_ PH, \_\_\_\_\_ HZ.

Quote Transformer: YES \_\_\_\_\_ NO \_\_\_\_\_



**SECTION 1:**

(Page 6 – 7)

Complete Sections 4 (if need resilient astragal)

**Survey Sheets Required:**

- Existing Courion Sheet #6
- Existing EMS Sheet #6
- Existing Guibert Sheet #7
- Existing Harris Preble Sheet #8A (Regular) or #8B (Pass & Extended Sill)
- Existing Otis Sheet #9
- Existing Security Sheet #6

**Options:**

- Wiring Materials (Electrical Package) \_\_\_\_\_
- Strobe Light for Auto Close System \_\_\_\_\_

**SECTION 2:**

(Page 8)

See Section 1 for Survey Sheets Required

LANDING Number								
Replace Upper Panel								
Replace Lower Panel								
Door Type: <b>Biparting:</b> Regular Pass Extended Sill								
Finish: Baked on Powder Coat (Standard) Stainless Steel Roomside Fascia Complete Stainless Construction								

**SECTION 3:**

(EXISTING PEELLE ONLY) (PAIRS) (Page 9)

LANDING Number								
Replace Lower Guide Rails								
Replace Intermediate Guide Rails								
Replace Upper Guide Rails								
Replace Unit Rails								
Door Type: <b>Biparting:</b> Regular Pass Extended Sill								
Rail Type: Formed Rail Build-up Rail								



**SECTION 4:**

(Page 9)

**Survey Sheet #4 Required**

Complete Astragal Assembly \_\_\_\_\_ Replacement Flaps Only \_\_\_\_\_

Side Tension Latches (Peelle only) \_\_\_\_\_

**SECTION 5:**

(Page 10)

**Survey Sheet #5 Required**      Openings Required \_\_\_\_\_

Interlocks \_\_\_\_\_ Retiring Cam \_\_\_\_\_

Mechanical Lock and Contact \_\_\_\_\_ Fixed Cam \_\_\_\_\_

Hoistway Door Unlocking Devices \_\_\_\_\_ Side Opposite Locks \_\_\_\_\_

**SECTION 6:**

(Page 11)

Complete Section 2 (page 3)

**Survey Sheet #1 and #2 Required For Other Manufacturers**

Retiring Cam(s) \_\_\_\_\_

Fixed Cam \_\_\_\_\_

Complete Car Gate \_\_\_\_\_

Replacement Controller \_\_\_\_\_

**SECTION 7:**

(Page 12)

**Survey Sheet #12 Required**

**Type:**

Single-Section (3/8 in./9mm) \_\_\_\_\_ Two-Section (3/8 in./9mm) \_\_\_\_\_

Overhead/Headroom From The Top Landing \_\_\_\_\_

**Construction:**

1800mm/6 feet High \_\_\_\_\_ 10 Gauge Wire Mesh (3/8 in./9mm) \_\_\_\_\_

Full Car Height \_\_\_\_\_ Solid Panel \_\_\_\_\_

Hardwood Bumpers \_\_\_\_\_ Steel Bumpers \_\_\_\_\_

**Finish:**

Stainless Steel \_\_\_\_\_ (Baked on Powder Coat finish is standard)

**Additional Equipment:**

Enclosure Angles (Required For Replacement of Non-Peelle Gates) \_\_\_\_\_

**SECTION 8:**

(EXISTING PEELLE OR OTIS ONLY) (Page 13)

Complete Section 7, & 10 (if applicable)

**Survey Sheet #10 Required for Otis Gate**

**SECTION 9:**

(EXISTING PEELLE ONLY) (Page 13)

Quantity Required \_\_\_\_\_ Which Line (Front or Rear) \_\_\_\_\_

Counterweight Side \_\_\_\_\_ Length \_\_\_\_\_ Counterweight Guard \_\_\_\_\_

Limit Side \_\_\_\_\_ Length \_\_\_\_\_



**SECTION 10:**

(Page 14)

Reversing Edge \_\_\_\_\_ Length \_\_\_\_\_ **Survey Sheet #11 Required For Other Mfg.**  
Light Curtain Retrofit Kit (The Protector™) \_\_\_\_\_ (Must have AC Motors)  
Auxiliary Controller (Reopening Control) \_\_\_\_\_ (For gates without a Reopening Device)

**SECTION 11A:**

(MUST HAVE AC MOTORS) (Page 15)

Single Line \_\_\_\_\_ Double Line \_\_\_\_\_  
Change from Single (1940s) To Two Speed \_\_\_\_\_

**Options:**

Transformer (voltage other than 208/220) \_\_\_\_\_  
Strobe Light for Auto Close System \_\_\_\_\_

**SECTION 11B:**

(Page 15)

Sequence Operation \_\_\_\_\_

**Options:**

Reopening Device (Reversing Edge) \_\_\_\_\_  
Reopening Device (Light Curtain Retrofit Kit) \_\_\_\_\_  
Reopening Devices (Edge and Curtain Kit) \_\_\_\_\_

**CONTROLLER MODIFICATION (EXISTING PEELLE ONLY)**

**Add Auto Close System (Auxiliary Controller)**

**Options:**

Warning Buzzer (to be mounted on car) \_\_\_\_\_  
Strobe Light (to be mounted through car ceiling) \_\_\_\_\_

**CONTROLLER MODIFICATION (EXISTING PEELLE ONLY)**

**Add Reopening Control (Auxiliary Controller)**

**Options:**

Reopening Device (Reversing Edge) \_\_\_\_\_  
Reopening Device (Light Curtain Retrofit Kit) \_\_\_\_\_  
Reopening Devices (Edge and Curtain Kit) \_\_\_\_\_

**SECTION 12:**

(Page 16)

**Survey Sheet #13 Required**

**Options:**

Hardwood Bumpers \_\_\_\_\_ Steel Bumpers \_\_\_\_\_  
Enclosure Handrails \_\_\_\_\_ Stainless Steel Panels \_\_\_\_\_



# SECTION 1

**Application:** To power operate or re-motorize existing freight elevator doors manufactured by Peelle, Courion, EMS, Guilbert, Harris Preble, Otis and Security. **Power Conversion Package reuses the existing door panels and rails.**

*Non-Peelle Power doors (single speed) may be re-motorized with Power Conversion Package (two-speed), especially Guilbert, Harris Preble and Otis. Peelle Power doors (single speed 1935-1949) should be re-motorized with Power Conversion Package (two-speed).*

*Most manual doors should be motorized with Power Conversion Package. Power doors are recommended if operated by personnel other than a trained elevator operator, such as delivery personnel, greater than 8' 0" wide, small statured personnel and where there is a high degree of safety.*

## Power Conversion Package Includes:

- Door Operators (2 per door)(two-speed)
- Door Master Limit (per line)
- Door Chains and Rods
- Hangerbar Extensions (When Required)
- Door Interlocks
- Door Guide Shoes (When Required)
- Door Tension Latches or Side Opposite Locks
- Retiring Cam Assembly
- Door Resilient Astragals (when required to replace steel astragal)
- Peelle Door Controller with Sequence Operation, Fire Service (Standard in USA) and Auto Close System availability
- Complete Power Operated Car Gate, completely new, with reopening device (edge, curtain, both)
- Door Unlocking Devices (Per local code)

**NOTE:** Peelle doors 1935-1949 were manufactured with single speed, not two-speed operators.

*Others manufacturers may supply single speed, not two-speed operators.*

## Optional Equipment:

- Wiring Material (Electrical Package)
- Strobe Light for Auto Close System
- Transformer (voltages other than 208/220)
- Light Curtain Retrofit Kit
- Bumpers for Car Gate, Hardwood or Steel
- Equipment for NEMA:  
4/IP54/56 (Moisture); 4X/IP56 (Corrosion);  
7 & 9 (Explosion); 12/IP52 (Dust)

## Benefits:

- Provides compliance with A17/B44 Codes.
- Lower cost by reusing existing panels and rails.
- Peelle power equipment improves dependability.
- Current Peelle production equipment-will be available for 50 years.
- Power Operation reduces loading time and effort.
- Move freight faster.
- Reduce shutdowns caused by manual doors.
- Improve building investments.
- Smoother, quieter operation.
- Same warranty as new equipment.
- Easier to operate

**NOTE:** Peelle is approved under U.L. procedure to replace equipment on other manufacturers' freight elevator doors and maintain the existing U.L. fire rating label.

## Survey Sheets Required:

- No Survey Sheet Required for Existing Peelle Equipment (Job Number must be provided). May use Sheet 8A or 8B.
- Factory Performed Field Surveys available at an additional cost.
- Information Required for Other Manufacturers: Sheet #1 and

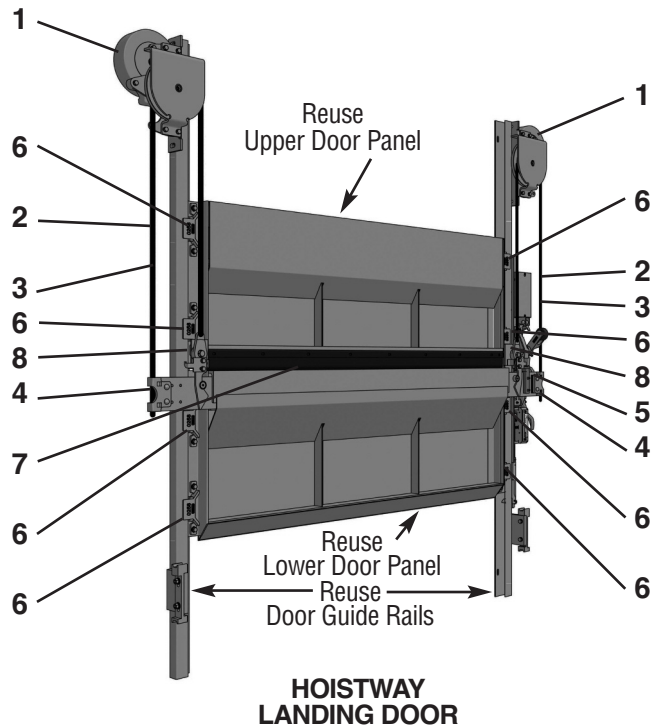
Existing Courion....	Sheet #6	Existing Otis....	Sheet #9
Existing EMS....	Sheet #6	Existing Security....	Sheet #6
Existing Guilbert....	Sheet #7		
Existing Harris Preble....	Sheet #8A (Regular) or #8B (Pass & Extended Sill)		



## SECTION 1

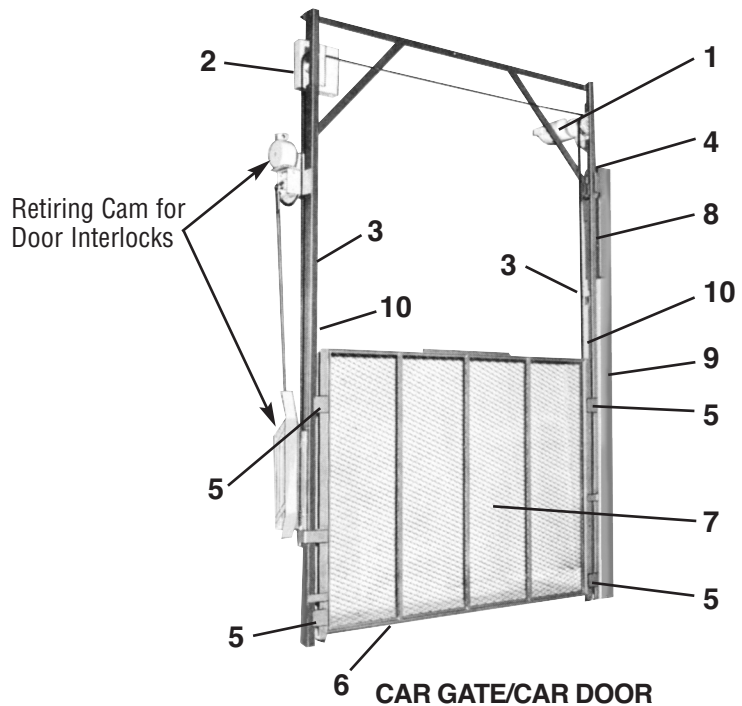
- (reuse panel and rails)
1. Peelle door operators (2)
  2. Peelle door chains (2 sets)
  3. Peelle chain rods (2)
  4. Peelle hangerbar extensions (2)
  5. Peelle interlock (door locking device)
  6. Peelle guide shoes (4 per panel)
  7. Peelle resilient astragal (cushion strip)
  8. Peelle tension latches
- Option: Peelle Wiring Package

- Peelle power controller for door/gate
- Peelle power operated car gate, furnished completely new, with reopening device (edge, curtain, or both)
- Peelle retiring cam
- Peelle door unlocking devices (per local code)
- Options: Auto Close System with Buzzer, Strobe Light for Auto Close System, Transformer, Bumpers for Car Gate
- Master Linit Arrangement



### EACH GATE (complete new)

1. Gate operator
2. Gate Idler
3. Gate chains (2 sets)
4. Gate contact
5. Guide shoes (4 per panel)
6. Reversing Edge, or Curtain, or both
7. Gate panel
8. Gate counterweight
9. Counterweight guard
10. Gate rails



## SECTION 2

**Application:** To replace existing hoistway door manufactured by Peelle, Courion, EMS, Guilbert, Harris Preble, Otis and Security.

### Door Panel Replacement Includes:

- Door Panel(s), steel plate construction (F10S)
- Guide Shoes
- Vision Panel
- Baked on Powder Coat Finish
- Resilient Astragal (Upper Panel)
- Fire Lintel (Pass Type Upper Panel)
- Trucking Sill (Lower Panel)

### Door Panel Available:

- Upper Panel
- Lower Panel
- Both Upper Panel and Lower Panel (One Pair)

### Optional Finish:

- Stainless Steel Roomside Add-on Fascia
- Complete Stainless Steel Construction (for special environment)

#### NOTES:

- (a) Peelle is approved under U.L. procedure to replace panels on other manufacturers' freight elevator doors and maintain the existing U.L. fire rating label. For example Peelle supplies UL labeled door panel replacements compatible with Otis UL doors to comply with A17.1 Code Rule 2.11.15 (was 110.15). Replacing an Otis panel with a panel that is not manufactured by Peelle may void the UL label.
- (b) If loads on car exceed car load rating, the load rating of existing door panels and door rails may be exceeded. Contact Peelle Modernization Sales for additional information.

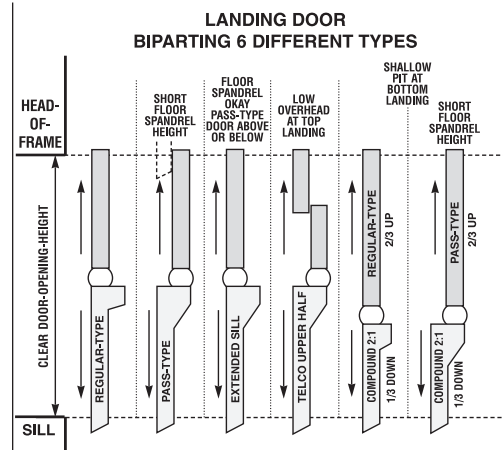
### Benefits:

- Provides compliance with A17/B44 Codes.
- Lower cost by reusing existing rails
- Expedited shipments available

### Survey Sheets Required:

- No Survey Sheet Required For Existing Peelle Equipment (Job Number must be provided). May use Sheet 8A or 8B.
- Factory Performed Field Surveys at an additional cost.
- Information Required for Other Manufacturers:

Existing Courion....	Sheet #6
Existing EMS....	Sheet #6
Existing Guilbert....	Sheet #7 Expedited
Existing Harris Preble....	Sheet #8A (Regular) or #8B (Pass & Extended Sill)
Existing Otis....	Sheet #9
Existing Security....	Sheet #6





## SECTION 3

**Application:** To replace existing hoistway door rails manufactured by Peelle.

### **Door Rail Replacement Includes:**

- Pair of Door Rails (A,B,C,D)
- Rail Mounting Angles (to mount rail to wall)
- Rail Stops
- Interlock Plugging Device
- Mounting Bolts

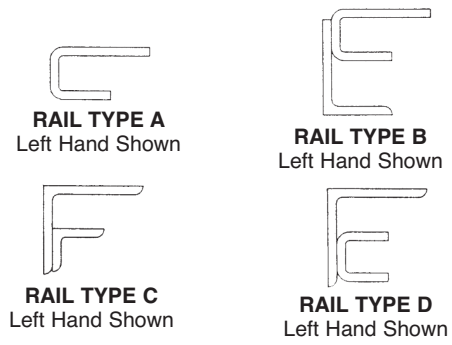
### **Rail Pairs Available:**

- Lower Guide Rails
- Upper Guide Rails
- Intermediate Guide Rails
- Unit Rails

#### **NOTES:**

(a) See Survey Sheet 3 for illustrations of lower, intermediate, upper, and unit rails.

(b) Single rail (left hand or right hand) available upon request. Hand determined standing on car facing door.



### **Survey Sheets Required:**

- No Survey Sheet Required for Existing Peelle Equipment (Job Number must be provided). May use Survey Sheet 3.

## SECTION 4

# HOISTWAY DOOR ASTRAGAL REPLACEMENT

**Application:** To replace existing steel astragal with resilient astragal conforming to A17/B44 Codes. For doors manufactured by Peelle, Courion, EMS, Guilbert, Harris Preble, Otis and Security.

### **Astragal Replacement Includes:**

- Resilient Astragal (includes mounting channel)
- Door Balancing Weights
- Dual Side Tension Latches (Peelle only)
- Mounting Hardware
- Double Bar Center Latches (manual doors, where applicable)

### **Benefits:**

- Improves system safety
- Removes door shearing hazard
- Provides compliance with A17.3 Code (requires removal of overlapping steel astragals and removal of center-hook-latches).

#### **NOTES:**

(a) Peelle is approved under U.L. procedure to replace resilient astragals on other manufacturers' freight elevator doors and maintain the existing U.L. fire rating label.

(b) Peelle doors prior to 1955 were manufactured with steel astragals.

(c) Type and condition of original interlock should be checked and replaced if needed.

(d) For doors over 3000mm/10 feet wide, a Side Opposite Lock is recommended to ensure a locked closed position.

### **Survey Sheets Required:**

- No Survey Sheet Required for Existing Peelle Equipment (Job Number must be provided)
- Information Required for Other Manufacturers... Sheet 4

## SECTION 5

**Application:** To replace existing hoistway door locks with interlocks conforming to A17/B44 Codes for:

- doors by Peelle.
- doors by Peelle, Courion, EMS, Guilbert, Harris Preble, Otis and Security.

*When replacing Interlocks, all Interlocks on the same line must be of the same type.*

### **Interlock Replacement Includes:**

- New UL/CSA Approved Hoistway Door Peelle Interlocks with upper panel locking, lower panel locking, and tamper resistant Interlock plugging
- Retiring Cams
- Retiring Cam mounting angles (when required for non-Peelle gates)
- Unlocking Devices (Per local code)

**NOTE:** Interlock plugging prevents door-closed contact from being made when door is open. Required by code.

### **Optional Equipment:**

- Interlock Equipment for NEMA 4/IP54/56 (Moisture); 4X/IP56 (Corrosion); 7 & 9 (Explosion); 12/IP52 (Dust)
- Side Opposite Lock for doors over 3000mm/10 feet wide to ensure closed position (doors prior to 1989 did not have Side Opposite Locks)

**NOTE:** When replacing Interlocks, Door Guide Shoes must be in proper working condition.

### **Benefits:**

- Provides compliance with A17/B44 Codes (requires approved interlocks).
- Upper Panel Locking as required by A17.1 Code.
- Tamper resistant Interlock Plugging as required by A17.1 Code.
- Eliminates center-hook-latch as required by A17.3 Code.

#### **NOTES:**

(a) Peelle is approved under U.L. procedure to replace interlocks on other manufacturers' freight elevator doors and maintain the existing U.L. fire rating label.

(b) Peelle Interlocks: (I) Prior to 1955 did not have tamper resistant Interlock Plugging; (II) Prior to 1977 did not have Upper Panel Locking; (III) Prior to 1989 did not have Side Opposite Locks.

### **Survey Sheets Required:**

- No Survey Sheet Required for Existing Peelle Equipment (Job Number must be provided)
- Factory Performed Field Surveys available at an additional cost.
- Information Required for Other Manufacturers... Sheet 5



## SECTION 6

**Application:** To provide a complete hoistway door assembly to an existing line of doors.

### **Adding a Complete Hoistway Door Includes:**

- Complete Hoistway Door, which includes panels, rails, shoes, door interlock, astragal, vision panel and sheaves
- Unlocking Devices (Per local code)
- Side Opposite Lock for door over 3000mm/10 feet wide
- Power door also includes hoistway door operators, door limit; and Auxiliary controller (if required)

**NOTE:**

A separate Auxiliary Controller to operate the Peelle power door is required for: (a) existing Controller other than Peelle, or (b) some existing Peelle Controllers.

### **Optional Equipment:**

- Retiring Cam
- Fixed Cam
- Complete Car Gate Replacement
- Replacement Controller to operate the complete power door and car gate system

**NOTE:**

Peelle Controllers prior to 1969 should be upgraded by a completely new Peelle Controller Replacement (see Section 11, page 15).

### **Benefits:**

- Provides compliance with A17/B44 Codes Rule 8.7.2.10.3 (was 1201.10c).
- Adding a door doesn't require ripout of the entire line of doors
- Provides value to the building owner
- Improves building investments

### **Survey Sheets Required:**

- No Survey Sheet Required for Existing Peelle Equipment (Job Number must be provided)
- Factory Performed Field Surveys available at an additional cost.
- Information Required for Other Manufacturers... Sheets #1 & 2



## SECTION 7

**Application:** To replace existing manual or power car gates manufactured by Peelle, Courion, EMS, Guilbert, Harris Preble, Otis and Security.

### **Available Designs:**

- Manual Operation with Pull Strap
- Power Operation Two-Speed
- Single-Section-Solid Panel or Wire Mesh
- Two-Section-Solid Panel or Wire Mesh
- 1800mm/6 feet High or Full-Height-of-Car-Enclosure

### **Complete Car Gate Replacement Includes:**

- Gate Panel(s) (3/8 in./9mm)
- Guide Shoes
- Pull Strap (Manual Operation)
- Counterweight(s) and Guard(s)
- Gate Chains
- Gate Rails
- Baked on Powder Coat Finish
- Gate Operator (Power Operation)
- Gate Limit (Power Operation)
- Auxiliary Gate Controller (required when the existing power gate is other than Peelle)
- Peelle Light Curtain, Reversing Edge, or both.

### **Optional Equipment:**

- Bumpers, Hardwood or Steel
- Stainless Steel Construction
- Passenger Lift Package
  - Solid Panel Car Gate
  - Light Curtain (non-contact)
  - Reversing Edge (contact)
  - 600 RPM Gate Motor
  - Safety Operation Labels
  - Auto Open and Auto Close
  - Full Height Gate Panel
- Removeable/Replaceable Lower 2'0" Panel
- Retail Lift Designed with Flush Lower Half (Reduces Shopping Cart Capture)

### **Benefits:**

- Improve Gate System Safety
- Provide Value to the Building Owner
- Improve Building Investment

### **Additional Equipment:**

- Enclosure Angles (required for replacement of non-Peelle gates)

### **Survey Sheets Required:**

- No Survey Sheet Required for Existing Peelle Equipment (Job Number must be provided)
- Factory Performed Field Surveys available at an additional cost.
- Information Required for Other Manufacturers... Sheet 12



## SECTION 8

**Application:** To replace existing gate for car gates manufactured by Peelle or Otis.

### **Gate Panel Replacement Includes:**

- Gate Panel: 10-gauge wire mesh construction (standard gate height is 1800mm/6 feet) **(3/8 in./9mm design)**
- Guide Shoes
- Pull Strap (Manual Operation)
- Baked Powder Coat Finish
- Mechanical Reversing Edge (Power Operation)
- Light Curtain Retrofit Kit (Power Operation)
- Auxiliary control (when required to incorporate reopening control for the existing Peelle door/gate controller)
- Auxiliary Gate Controller (required when the existing power gate is other than Peelle)

**NOTE:** When replacing an existing Gate Panel, altering the construction will change the gate panel weight/counterweight relationship and a new gate counterweight is usually supplied. New gate chains are required.

### **Optional Equipment:**

- Bumpers, Hardwood or Steel
- Stainless Steel Construction
- Removeable/Replaceable Lower 2'0" Panel
- Retail Lift Designed with Flush Lower Half (Reduces Shopping Cart Capture)

### **Benefits**

- Lower Cost by Reusing Existing Rails
- Expedited Shipments Available

### **Survey Sheets Required:**

- No Survey Sheet Required for Existing Peelle Equipment (Job Number must be provided)
- Existing Otis Gates.... Sheet 10

## SECTION 9 CAR GATE RAILS REPLACEMENT

**Application:** To replace existing gate rails for car gates manufactured by Peelle.

### **Available Gate Rail Types:**

- Counterweight Side Gate Rail with counterweight track and mounting hardware; with or without optional counterweight guard upgrade
- Limit Side Gate Rail with mounting hardware (reuse existing limit)

### **Survey Sheets Required:**

- No Survey Sheet Required for Existing Peelle Equipment (Job Number must be provided)



## SECTION 10

**Application:** To provide or replace the reopening device for existing power car gates manufactured by Peelle, Courion, EMS, Guilbert, Harris Preble, Otis and Security.

### Reversing Edge

#### Design:

- Vinyl covered with electric contact strip for NEMA 1, 4, 4X, 12/IP10, 52, 54
- Vinyl covered with pneumatic activation for NEMA 7 and 9

#### Reversing Edge Replacement Includes:

- Reversing Edge; with retaining strips and hardware (give length or job number)

#### Optional Equipment:

- Auxiliary Controller (add Reopening Control)(For Gates without a Reopening Device)

#### Benefits:

- Car gate and hoistway door will reopen when an obstruction is detected by the edge.

#### Survey Sheets Required:

- No Survey Sheet Required for Existing Peelle Equipment (Job Number must be provided)
- Information Required for Other Manufacturers.... Sheet 11

**NOTE:** For car gates prior to 1969, adding a reopening device requires complete car gate replacement (refer to Section 7).

### 4699 Light Curtain Retrofit Kit *THE PROTECTOR*<sup>TM</sup>

#### Design:

- Light Curtain Retrofit Kit (The Protector<sup>TM</sup>) (cascade) designed for vertically sliding car gates. Nema 1,4

#### Reopening Device Kit Includes:

- Two arrays, power cords, power supply, retrofit hardware and instructions.

**NOTE:** The kit needs either 2 or 4 spare wires of the elevator travel cable.

#### Optional Equipment:

- Auxiliary Controller (add Reopening Control) (For gates without a reopening device)

#### Benefits:

- Light curtain (cascade) is mounted inside the gate track. *No need to make modifications to the cab.* The Detection beams are directly adjacent to the traveling gate panel to provide ultimate protection during closing. The light curtain will ignore the car gate as it closes (cascades) past the system sensors.
- Car gate and hoistway door, while in the open position, will not move when an obstruction is detected by the light curtain.
- Car gate and hoistway door, while closing, will reopen when an obstruction is detected by the light curtain.

#### Survey Sheets Required:

- See Guide 222 for Space Requirements
- Peelle Job Number Required



## SECTION 11A

**Application:** To replace existing Peelle Door Controllers 1950–2001.

### **Controller Replacement Includes:**

- Fire Service, Phase I and II (requires some hoistway wiring changes for jobs 1950–1969)
- Auto Close (requires Warning Buzzer and Reopening Control – both are included)
- Auto Close Warning Buzzer (requires mounting this Warning Buzzer on car)
- Reopening Control of car gate and hoistway door by Reopening Device (requires Reopening Device)
- Reverse Phase protection
- Continuous Close or Momentary Pressure Close
- PLC Controller (current Peelle production)
- Instruction sheets

### **Optional Equipment:**

- Transformers for 3-phase AC 50/60Hz power supplies other than 220 volt
- Door Stop Button (by others)
- Strobe Light

### **Benefits (will easily replace most existing Peelle Controllers):**

- Equal or improved door operation
- Wire terminal numbers on controller are the same as original controller (if original elevator controller remains as is)
- Auto Close is user selectable (on/off)
- Controller interface is user selectable (standard/slave)
- No proprietary service tool required
- Controller Replacement cost is less than a few motor replacements. Better motor protection is provided.
- **Fire Service, Phase I and II** – To meet local code requirements.
- **Auto Close System**– Hoistway Door and Car Gate will automatically close after a pre-determined period of time or in response to remote initiation. Eliminates need for elevator operator to close door.
- **Sequence Operation** – For safety, to prevent attempted entry or egress too early:  
*Close Direction:* Car gate closes 2/3 before hoistway door starts to close.  
*Open Direction:* Hoistway door opens 2/3 before car gate starts to open.
- **Two-Speed Operation** – Eliminates slams and door bounce when closing. Shutdowns can occur if the door bounces open.
- **Automatic Stay Open** – Keeps the hoistway door open if rebounding occurs when loading or unloading the car.

## SECTION 11B

### **Controller Modification (Existing Peelle Only)**

- Modify Controller from Simultaneous to Sequence Operation (requires Reopening Device)
- Add Auto Close System (Auxiliary Controller)(requires car-mounted Warning Buzzer)
- Add Reopening Control (Auxiliary Controller) (requires Reopening Device such as Light Curtain)

### **Survey Sheets Required:**

- No Survey Sheet Required for Existing Peelle Equipment (Job Number must be provided)
- Factory Performed Field Surveys available at an additional cost



## SECTION 12

**Application:** To replace existing freight cab (car) enclosure.

### **Complete Cab Enclosure Replacement Includes:**

- Side Panels of #14/2mm Gauge Construction
- Top Panels – heavy duty design
- Flush mounted Fluorescent Light Fixtures
- Hinged Emergency Exit Panel with Electric Contact
- Car Operating Station (COP) Cutouts
- Stile Mounting Brackets
- Car-to-Frame Anti-Sway Stabilizers
- Baked on Powder Coat Finish RAL 7010
- Mounting Carriage Bolts (one size diameter, two different lengths)

### **Optional Equipment:**

- Enclosure Bumpers, Hardwood or Steel
- Enclosure Handrails
- Stainless Steel Panels, #4 Finish
- Car top handrails
- Handrails
- Protective Pads and Hooks
- Auto Lift Package
  - Bumpers (wood or steel)
  - Floor Curb
  - Exhaust Fan
  - Stop & Go Lights

### **Benefits:**

- Easy installation– entirely from inside the car
- Sturdy design allows mechanics to work on top of the cab
- Steel canopy over light fixtures for added protection when working on top of car
- COP cutout reinforcements for strength

### **Survey Sheets Required:**

- Information Required... Sheet 13
- Factory Performed Field Surveys available at an additional cost.

### **Also Available:**

Spare Parts Kit  
# Part Number 060032



Installation Tools Kit  
# Part Number 060040



Consumables Kit  
# Part Number 060086

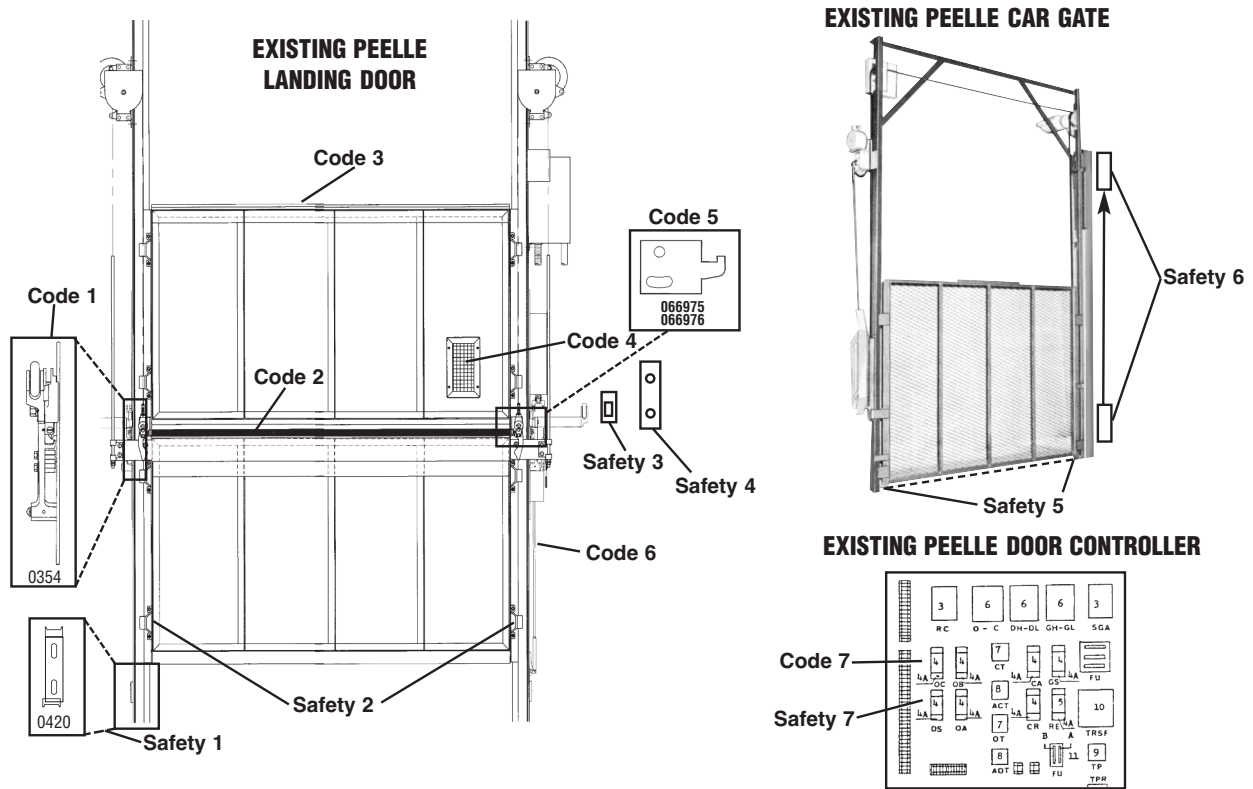


Safety Labels  
# Part Number 060045





# Code and Safety Upgrades – Peelle Doors



## Code Required Upgrades (ASME A17.3 partial list)

- Code 1.** Add Peelle #0354 Side Opposite Lock to lock the side of door opposite the interlock. For doors before 1989 over 3000mm/10 feet wide. Requires cam on car. May require shoe replacements, refer to Safety 2 below.
- Code 2.** Add Peelle Resilient Astragal to replace existing steel astragal. For doors before 1955. Refer to Modernization Guide 312 Section 4.
- Code 3.** Replace missing or worn Peelle #06781 Fire Lintel on Pass type doors.
- Code 4.** Replace oversize vision panels with standard size Peelle Vision Panels, grills and filler plates. For some doors before 1950. If a persons head can fit through vision panel, vision panel size should be reduced. Recommend grills on all vision panels.
- Code 5.** Add Peelle #066975 Lock Keeper to lock the upper panel. For doors before 1977. See illustration Parts Guide 314 page 7. Requires new interlocks.
- Code 6.** Add Peelle #23561 Tamper Resistant Plugging Device to prevent activation of door interlock close contact when door is open. For doors before 1955.
- Code 7.** Add a completely new Peelle Controller Replacement with Fire Service when Fire Service is added to elevator. Refer to Modernization Guide 312 Section 11.
- Code 8.** Replace Double Section Gate Panels. New gate panels have tightly weaved 3/8 rectangular wire mesh.

## Safety Upgrades (partial list)

- Safety 1.** Upgrade Door Stops with Peelle #0420. For doors before 1950 . For smoother trucking across door sill.
- Safety 2.** Replace Landing Door Shoes to eliminate excessive play that causes improper door locking.
- Safety 3.** Upgrade Unlocking Devices with Peelle #2380 that has an electric contact which when activated disables power door operation. For power doors. For unlocking devices before 1973.
- Safety 4.** Add #4699 Light Curtain Retrofit Kit (The Protector™). Refer to Modernization Guide 312 Section 10.
- Safety 5.** Reposition Car Gate Contact upward out of reach of persons inside car with Peelle #2342, #234200 and #234201. For car gates before 1960.
- Safety 6.** Modify Door Controller from Simultaneous Operation to Sequence Operation. Requires reopening device; recommend Peelle #4699 Light Curtain Retrofit Kit, refer to Modernization Guide 312 Section 10.

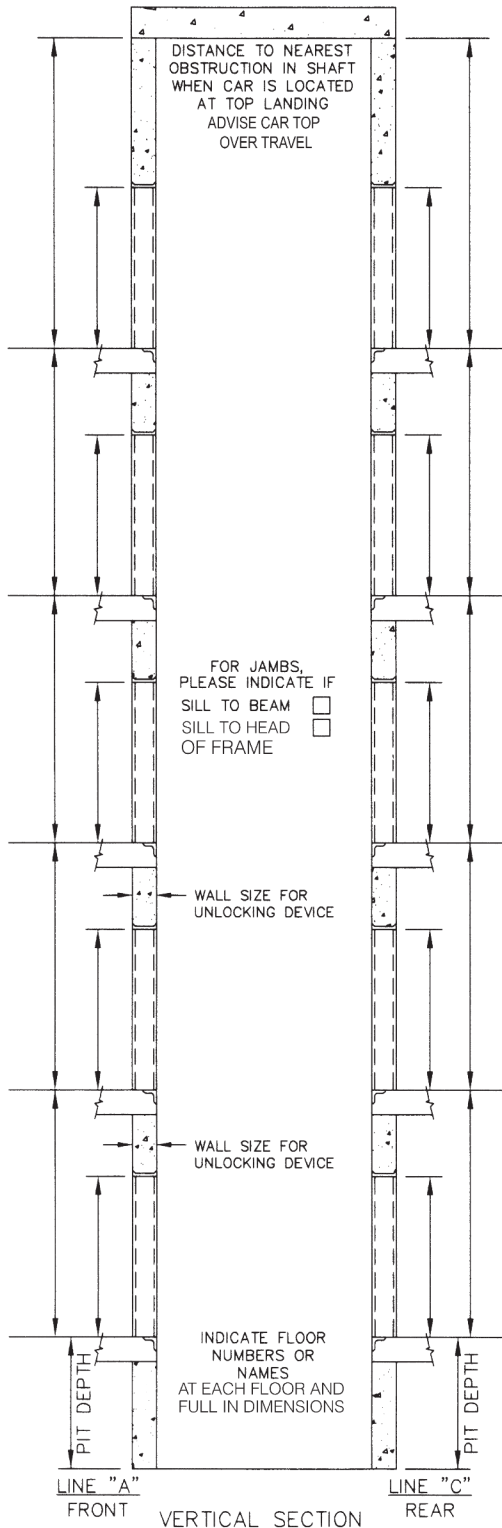


# SURVEY SHEET #1

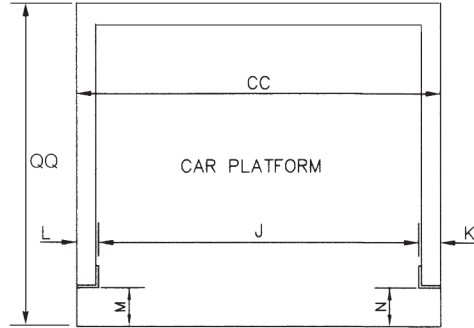
## NEW DOOR & GATE SURVEY SHEET - ALL MANUFACTURES

POWER

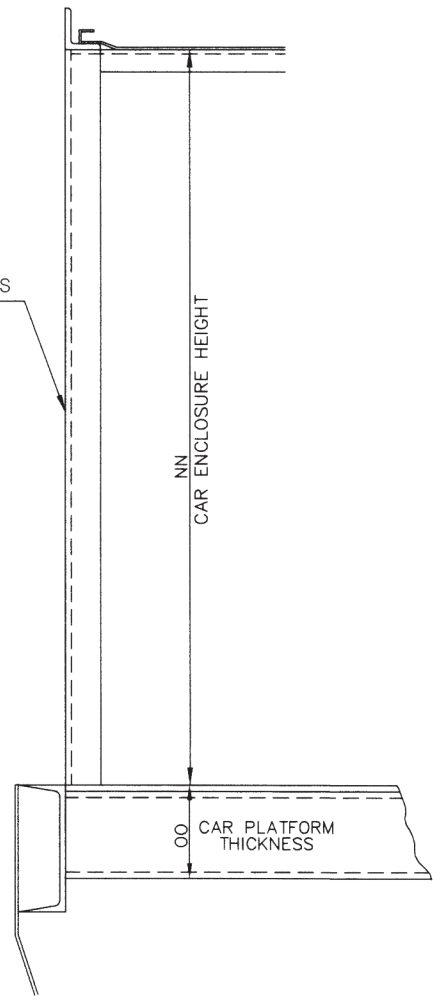
MANUAL



- QQ \_\_\_\_\_
  - CC \_\_\_\_\_
  - J \_\_\_\_\_
  - K \_\_\_\_\_
  - L \_\_\_\_\_
  - M \_\_\_\_\_
  - N \_\_\_\_\_
  - NN \_\_\_\_\_
  - OO \_\_\_\_\_
- DISTANCE TO MACHINE ROOM \_\_\_\_\_



CAB ENCLOSURE ANGLES  
(GIVE SIZE)



SIDE ELEVATION OF CAR

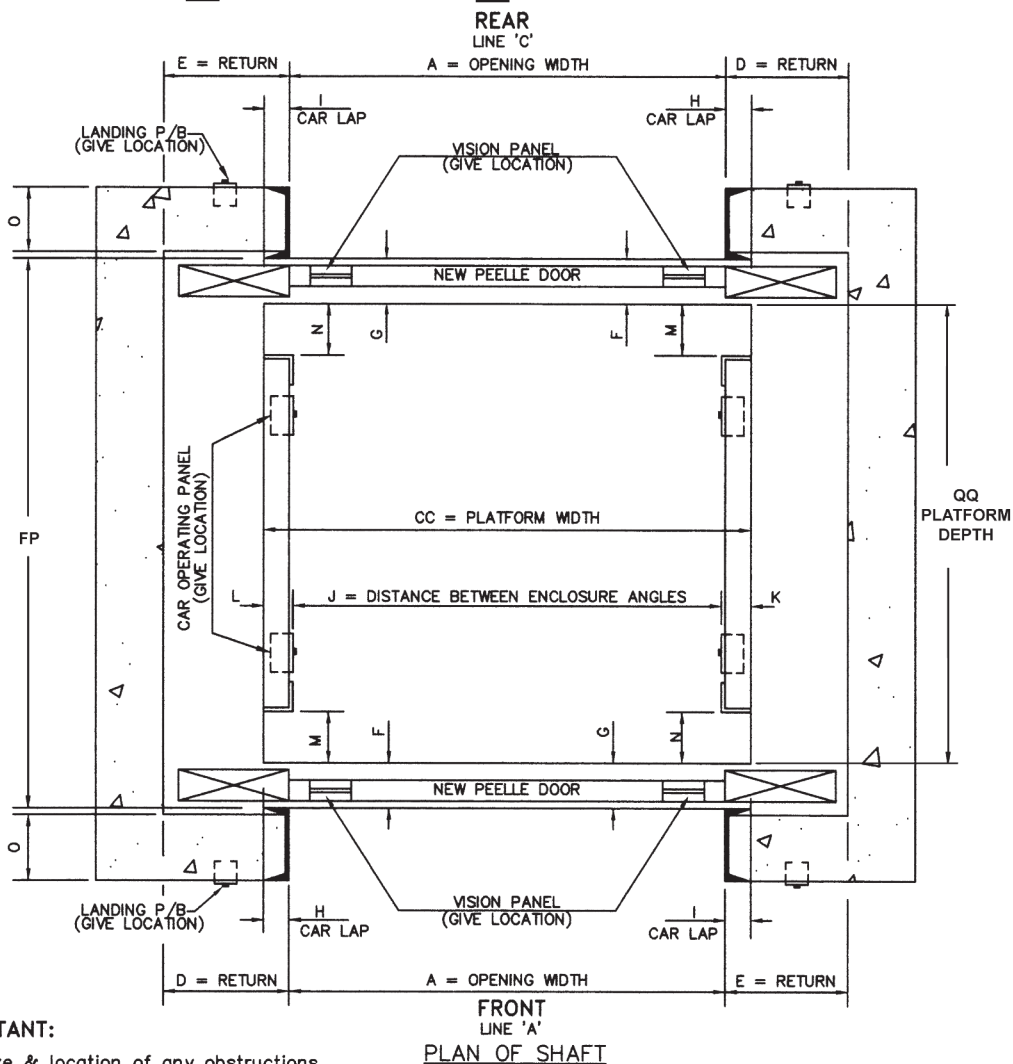




# SURVEY SHEET #2

## NEW DOOR & GATE SURVEY SHEET - ALL MANUFACTURES

POWER       MANUAL



**IMPORTANT:**  
Give size & location of any obstructions on both sides of the car.

FLOOR	A	D	E	F	G	H	I	CC	J	K	L	M	N	O	FP

VOLTAGE \_\_\_\_\_  
 CAPACITY \_\_\_\_\_  
 CLASS LOADING \_\_\_\_\_  
 INDICATE LOCATION OF CAR AND LANDING STATIONS \_\_\_\_\_  
 HANDS OF ELEVATOR DOOR HARDWARE ARE DETERMINED BY STANDING IN CAR FACING DOOR.

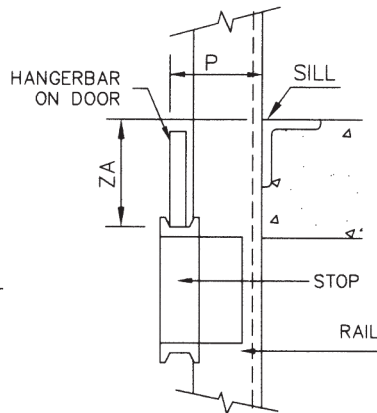
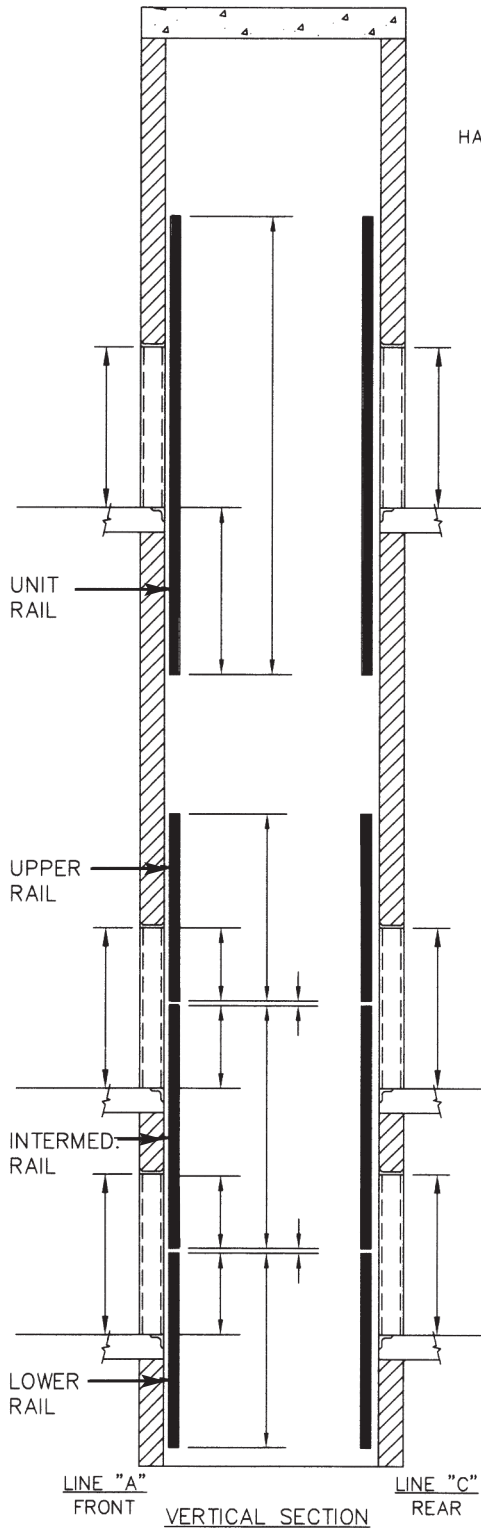




# SURVEY SHEET #3

## HOISTWAY DOOR RAIL SURVEY SHEET

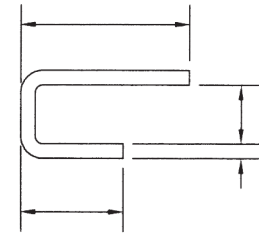
(PEELLE ONLY)



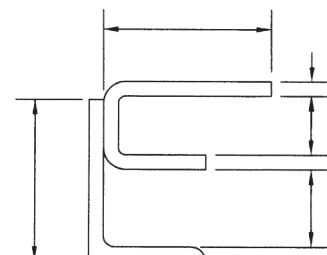
SILL STOP  
LOCATION AT  
EACH FLOOR  
RH SHOWN  
LH OPPOSITE TO SHOWN

FLOOR	P	ZA

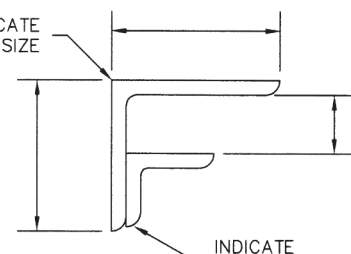
INDICATE RAIL TYPE  
AND SIZES BELOW  
IF RAIL TYPE NOT SHOWN  
PROVIDE SKETCH



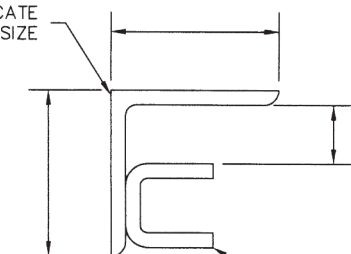
RAIL TYPE A  
LEFT HAND SHOWN



RAIL TYPE B  
LEFT HAND SHOWN



RAIL TYPE C  
LEFT HAND SHOWN



RAIL TYPE D  
LEFT HAND SHOWN

HANDS OF ELEVATOR DOOR HARDWARE ARE  
DETERMINED BY STANDING IN CAR FACING DOOR.





# SURVEY SHEET #4

## ASTRAGAL SURVEY SHEET

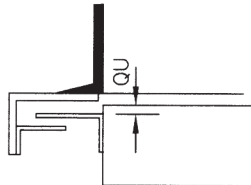
POWER

MANUAL

DOOR MANUFACTURER:  
(CHECK ONE)

- PEELLE
- COURION/SECURITY
- GUILBERT
- HARRIS PREBLE
- OTIS

DIMENSIONS		
AA		R
P		S
QU		T
FP		U
EE	TYPE & HAND OF INTERLOCK	<input type="checkbox"/> LH <input type="checkbox"/> RH
UU	DOOR FRAME ANGLE SIZE	
X	MAIN RAIL ANGLE SIZE	
Y	GUIDE RAIL ANGLE SIZE	
YY	ANGLE LEG SIZE	
II	CENTER LATCH ON	<input type="checkbox"/> LOWER PANEL <input type="checkbox"/> UPPER PANEL
JJ	ROOM SIDE LEVER	<input type="checkbox"/> YES <input type="checkbox"/> NO

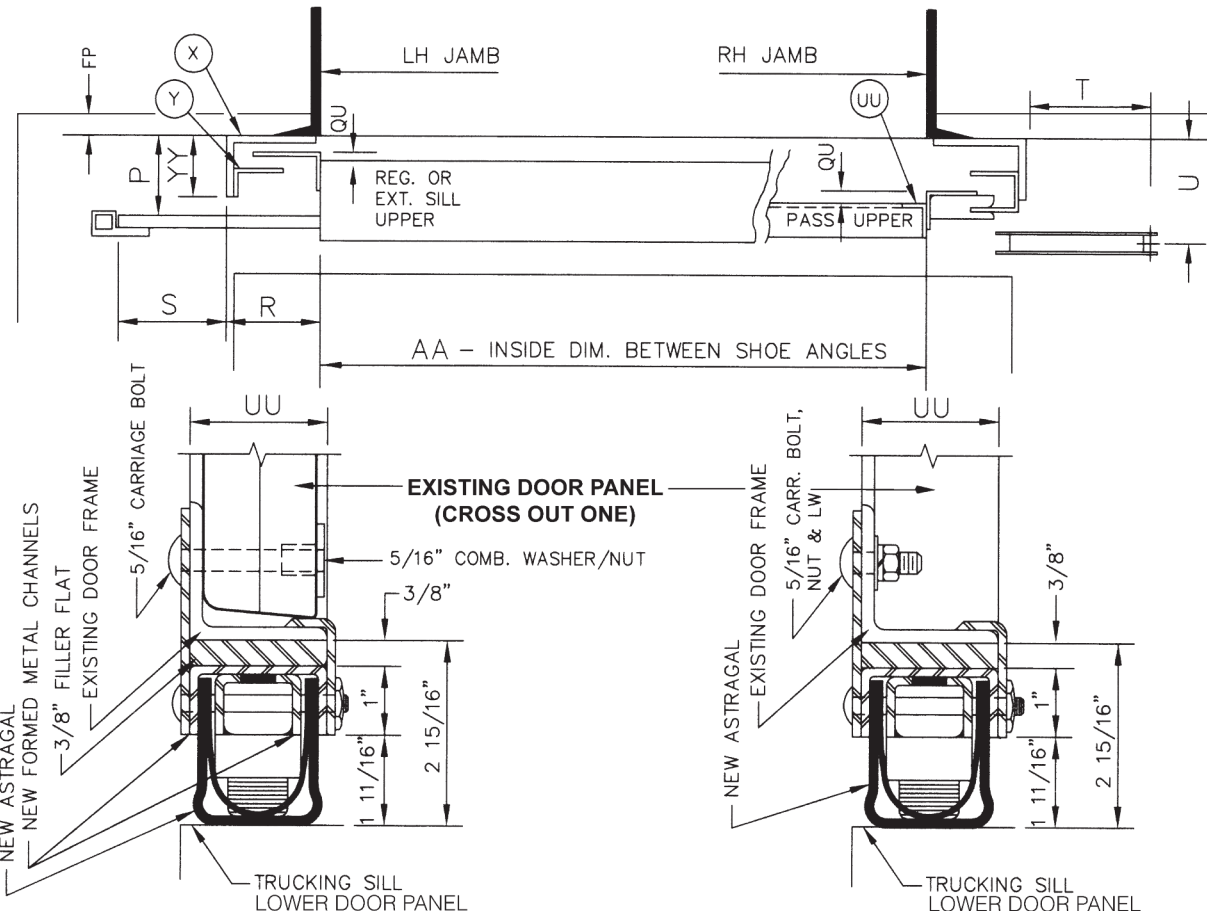


ALTERNATE  
(CROSS OUT ONE)

NOTE: DIM. 'S', 'T', 'U', 'P', "EE", "UU", "X", "Y" & "YY" ONLY REQUIRED WHEN PEELLE SIDE TENSION LATCHING IS REQUIRED.

HANDS OF ELEVATOR DOOR HARDWARE ARE DETERMINED BY STANDING IN CAR FACING DOOR.

GIVE DISCRPTION OF EXISTING ASTRAGAL  
GIVE DISCRPTION OF TYPE OF CHAIN



2 1/2" ASTRAGAL FOR WOOD CORE DOORS  
NOTE: SHADED ITEMS ARE NEW ITEMS BY PEELLE

2 1/2" ASTRAGAL FOR STEEL PLATE DOORS





# SURVEY SHEET #5

## INTERLOCK / RETIRING CAM SURVEY SHEET

**POWER (Peelle Only)**       **MANUAL**

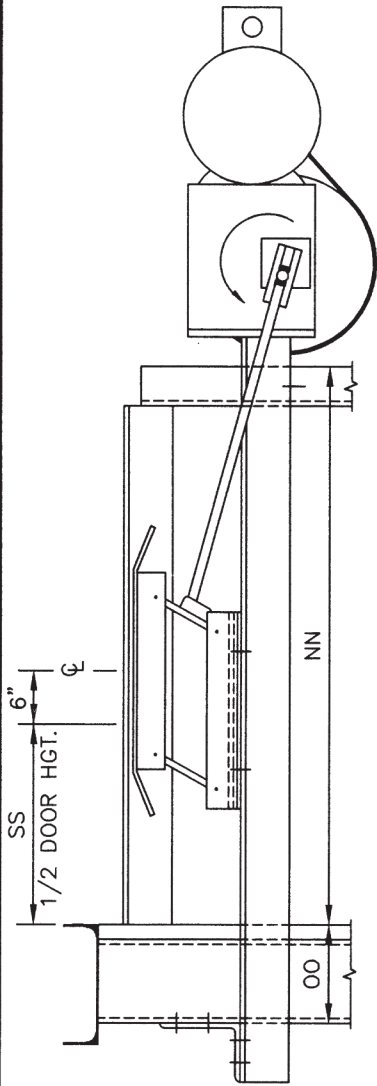
INTERLOCKS FOR DOORS BY:  
(CHECK ONE)

- PEELLE
- COURION/SECURITY
- GUILBERT
- HARRIS PREBLE
- OTIS

DIMENSIONS

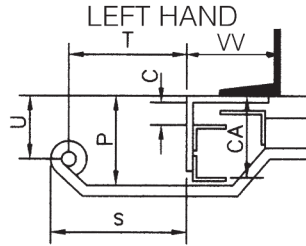
C _____	S _____
CA _____	T _____
E _____	U _____
G _____	NN _____
I _____	OO _____
P _____	SS _____

LOWER PANEL SHOE ANGLE \_\_\_X\_\_\_X\_\_\_

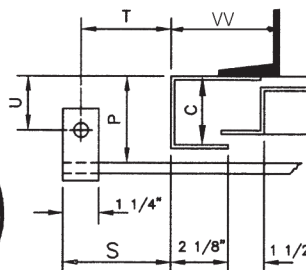


PEELLE RETIRING CAM

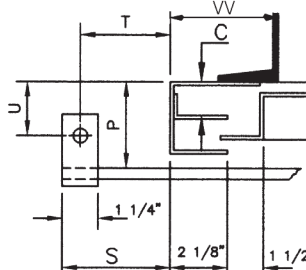
NOTE: DIM. 'E', 'G' & 'I' ARE  
REQUIRED FOR ALL  
MANUFACTURERS



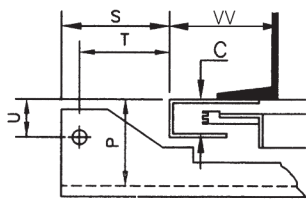
COURION/SECURITY  
PASS RAIL



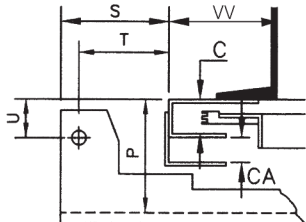
GUILBERT REGULAR RAIL



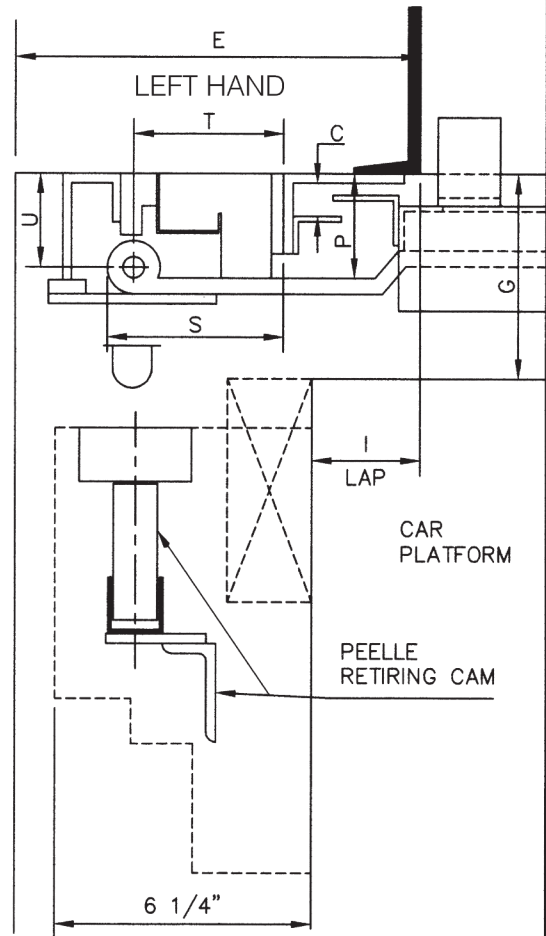
GUILBERT PASS RAIL



OTIS REGULAR RAIL



OTIS PASS RAIL



PLAN SHOWING PEELLE UB-1A  
INTERLOCK ON COURION/SECURITY  
DOOR WITH REGULAR RAIL

\_\_\_\_\_ LH AS SHOWN

\_\_\_\_\_ RH OPPOSITE TO SHOW  
HANDS OF ELEVATOR DOOR HARDWARE  
ARE DETERMINED BY STANDING IN CAR  
FACING DOOR.



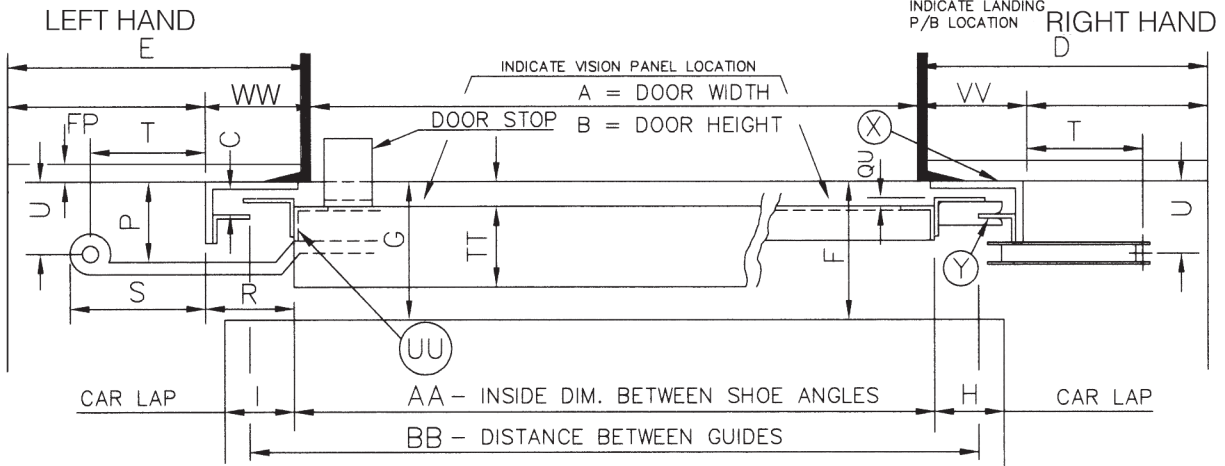


# SURVEY SHEET #6

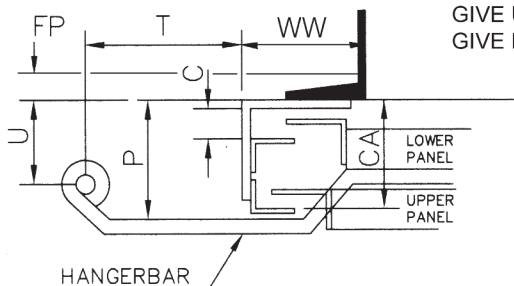
## COURION / SECURITY OR EMS DOOR SURVEY SHEET

POWER  MANUAL

NOTE: SHOWING PROJ. TYP.  
INDICATE LANDING  
P/B LOCATION

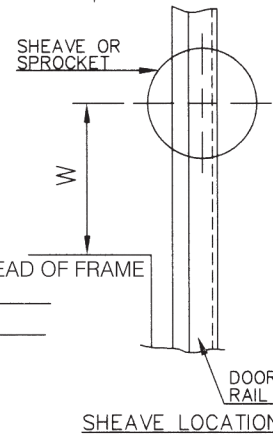


### REGULAR SETTING



### PASS SETTING

NOTE: (FOR REPLACEMENT PANELS  
GIVE UPPER PANEL HEIGHT \_\_\_\_\_  
GIVE LOWER PANEL HEIGHT \_\_\_\_\_



REG DOORS AT: \_\_\_\_\_  
PASS DOORS AT: \_\_\_\_\_

- STEEL PLATE
- WOOD CORE

NOTE:  
HANDS OF ELEVATOR DOOR HARDWARE ARE  
DETERMINED BY STANDING IN CAR FACING DOOR.

FLOOR	A	B	C	CA	D	E	F	G	H	I	P	QU	R	S	T	U	W	AA	BB	VV	WW	FP	

X	MAIN RAIL SIZE	GG	CHAIN TYPE & SIZE	<input type="checkbox"/> LEAF <input type="checkbox"/> ROLLER
Y	GUIDE RAIL SIZE	HH	CHAIN HANGER TYPE (GIVE SKETCH)	
DD	SHOE TYPE (GIVE SKETCH)	II	CENTER LATCH ON	<input type="checkbox"/> UPPER <input type="checkbox"/> LOWER PANEL
EE	TYPE & HAND OF INTERLOCKS	<input type="checkbox"/> LH <input type="checkbox"/> RH	JJ	ROOM SIDE LEVER <input type="checkbox"/> YES <input type="checkbox"/> NO
	(HAND DETERMINED STANDING ON CAR FACING DOOR)	TT	TRUCKING SILL SIZE	
FF	CHAIN ROD LENGTH AND METOR	UU	DOOR FRAME ANGLE SIZE	

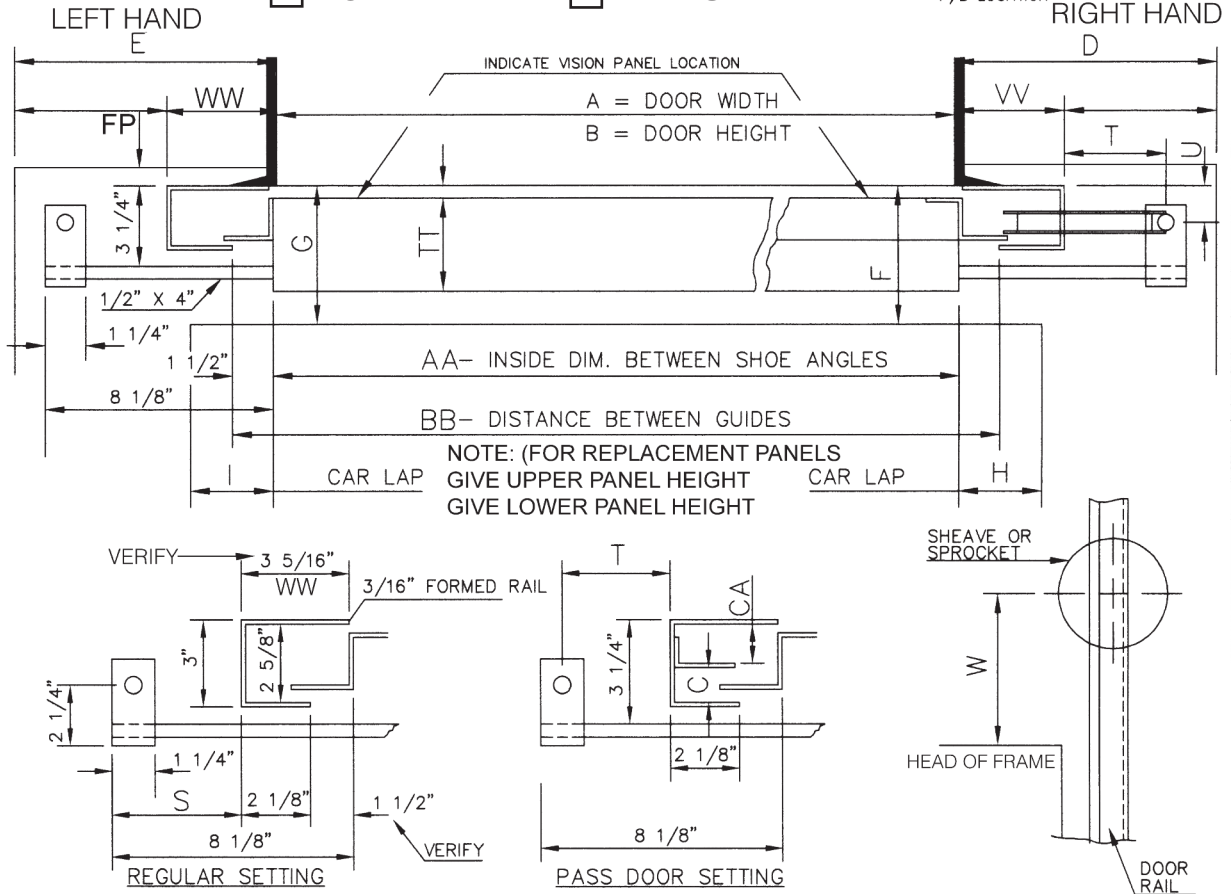




# SURVEY SHEET #7 GUILBERT DOOR SURVEY SHEET

**POWER**       **MANUAL**

NOTE:  
INDICATE LANDING  
P/B LOCATION



REGULAR DOORS AT: \_\_\_\_\_ PASS DOORS AT: \_\_\_\_\_ SHEAVE LOCATION

NOTE:  
HANDS OF ELEVATOR DOOR HARDWARE ARE  
DETERMINED BY STANDING IN CAR FACING DOOR.

FLOOR	A	B	C	CA	D	E	F	G	H	I	Q	S	T	U	W	AA	BB	VV	WW	FP

DD	SHOE TYPE (GIVE SKETCH)	HH	CHAIN HANGER TYPE (GIVE SKETCH)
EE	TYPE & HAND OF INTERLOCKS <input type="checkbox"/> LH <input type="checkbox"/> RH	II	CENTER LATCH ON <input type="checkbox"/> UPPER <input type="checkbox"/> LOWER PANEL
	(HAND DETERMINED STANDING IN CAR FACING DOOR)	JJ	ROOM SIDE LEVER <input type="checkbox"/> YES <input type="checkbox"/> NO
FF	CHAIN ROD LENGTH	TT	TRUCKING SILL SIZE
GG	CHAIN TYPE & SIZE <input type="checkbox"/> LEAF <input type="checkbox"/> ROLLER	UU	DOOR FRAME ANGLE SIZE





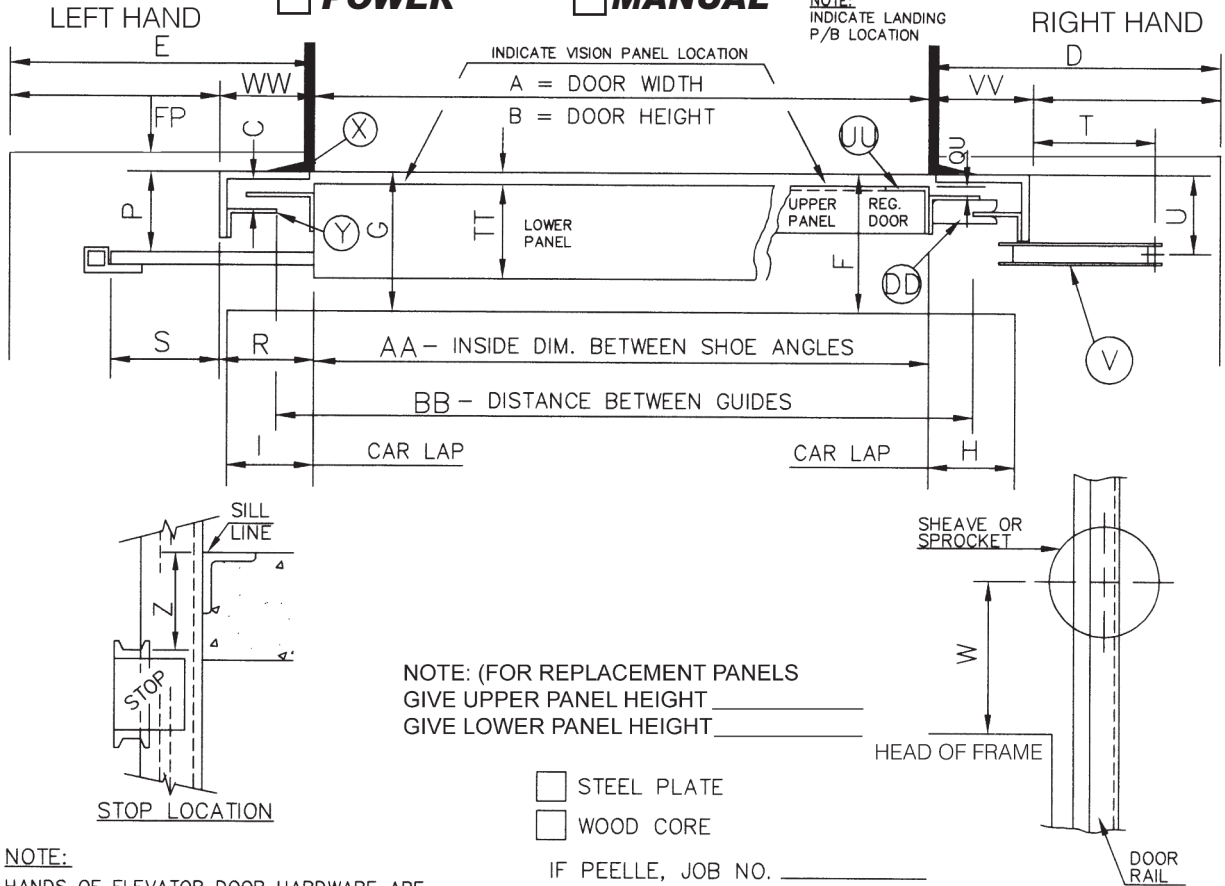


# SURVEY SHEET #8A

## PEELLE OR HARRIS PREBLE (REGULAR DOOR) SURVEY SHEET

POWER       MANUAL

NOTE:  
INDICATE LANDING  
P/B LOCATION



NOTE: (FOR REPLACEMENT PANELS  
GIVE UPPER PANEL HEIGHT \_\_\_\_\_  
GIVE LOWER PANEL HEIGHT \_\_\_\_\_

STEEL PLATE  
 WOOD CORE

IF PEELLE, JOB NO. \_\_\_\_\_

NOTE:  
HANDS OF ELEVATOR DOOR HARDWARE ARE  
DETERMINED BY STANDING IN CAR FACING DOOR.

SHEAVE LOCATION

FLOOR	A	B	C	D	E	F	G	H	I	P	QU	R	S	T	U	W	Z	AA	BB	FP

V	SHEAVE DIAMETER	GG	CHAIN TYPE & SIZE	<input type="checkbox"/> LEAF <input type="checkbox"/> ROLLER
X	MAIN RAIL SIZE	HH	CHAIN HANGER TYPE (GIVE SKETCH)	
Y	GUIDE RAIL SIZE	II	CENTER LATCH ON <input type="checkbox"/> UPPER <input type="checkbox"/> LOWER PANEL	
DD	SHOE TYPE (GIVE SKETCH)	JJ	ROOM SIDE LEVER <input type="checkbox"/> YES <input type="checkbox"/> NO	
EE	TYPE & HAND OF INTERLOCKS <input type="checkbox"/> LH <input type="checkbox"/> RH	TT	TRUCKING SILL SIZE	
	(HAND DETERMINED STANDING ON CAR FACING DOOR)	UU	DOOR FRAME ANGLE SIZE	
FF	CHAIN ROD LENGTH	VV		WW

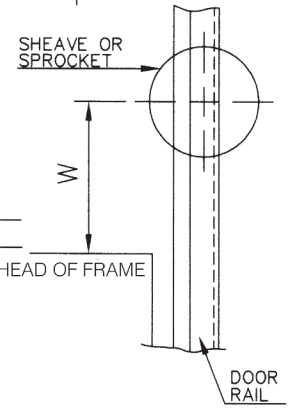
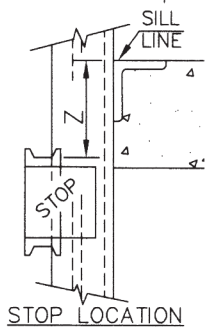
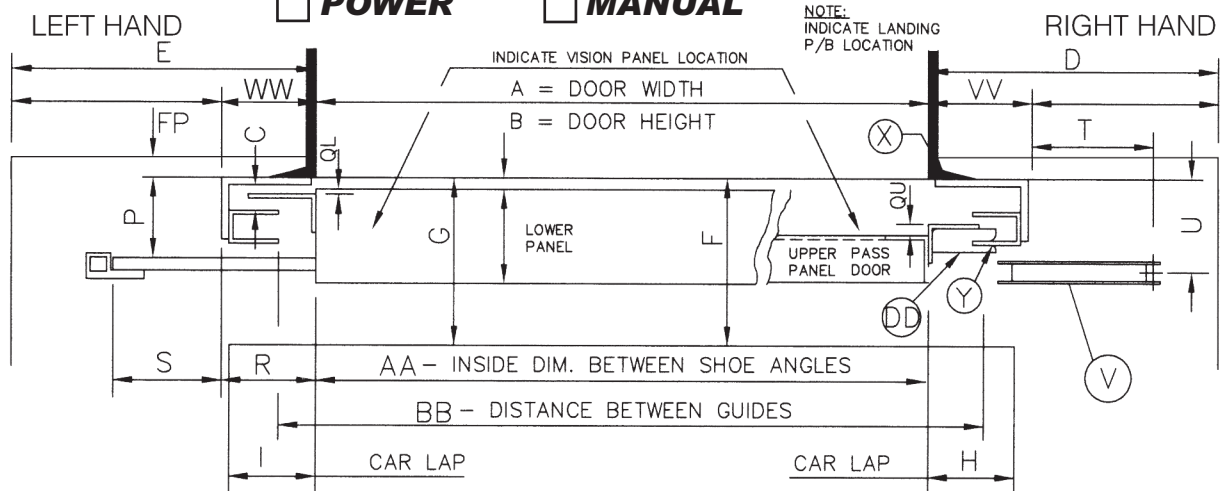




# SURVEY SHEET #8B

PEELLE OR HARRIS PREBLE (PASS TYPE/EXTENDED SILL) DOOR SURVEY SHEET

POWER  MANUAL



NOTE: (FOR REPLACEMENT PANELS  
GIVE UPPER PANEL HEIGHT \_\_\_\_\_  
GIVE LOWER PANEL HEIGHT \_\_\_\_\_

EXTENDED SILL DOORS AT: \_\_\_\_\_  
PASS TYPE DOORS AT: \_\_\_\_\_

STEEL PLATE  
 WOOD CORE  
IF PEELLE, JOB NO. \_\_\_\_\_

**NOTE:**

HANDS OF ELEVATOR DOOR HARDWARE ARE DETERMINED BY STANDING IN CAR FACING DOOR.

FLOOR	A	B	C	D	E	F	G	H	I	P	QL	QU	R	S	T	U	W	Z	AA	BB	FP

V	SHEAVE DIAMETER	GG	CHAIN TYPE & SIZE	<input type="checkbox"/> LEAF <input type="checkbox"/> ROLLER
X	MAIN RAIL SIZE	HH	CHAIN HANGER TYPE (GIVE SKETCH)	
Y	GUIDE RAIL SIZE	II	CENTER LATCH ON <input type="checkbox"/> UPPER <input type="checkbox"/> LOWER PANEL	
DD	SHOE TYPE (GIVE SKETCH)	JJ	ROOM SIDE LEVER <input type="checkbox"/> YES <input type="checkbox"/> NO	
EE	TYPE & HAND OF INTERLOCKS <input type="checkbox"/> LH <input type="checkbox"/> RH	TT	TRUCKING SILL SIZE	
	(HAND DETERMINED STANDING ON CAR FACING DOOR)	UU	DOOR FRAME ANGLE SIZE	
FF	CHAIN ROD LENGTH	VV		WW

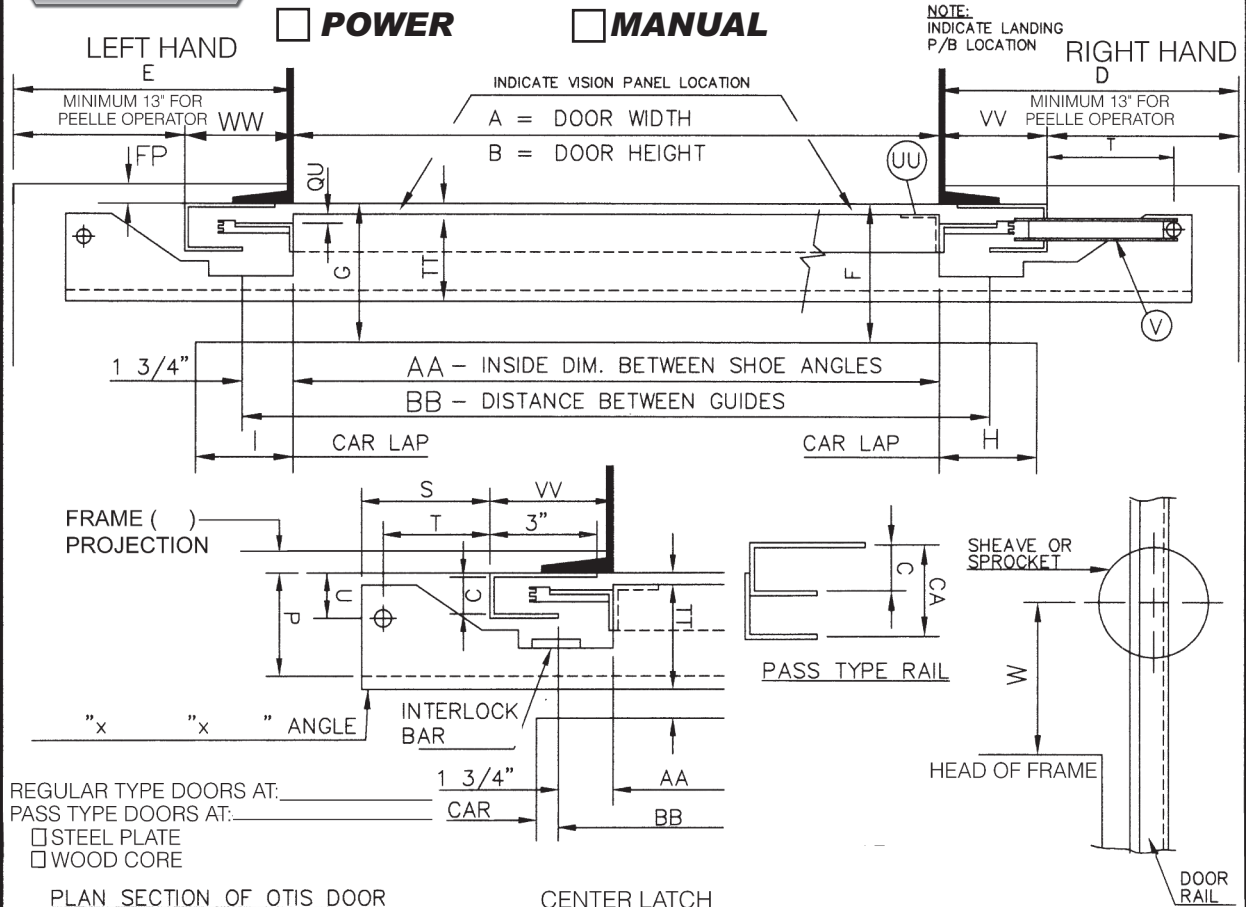




# SURVEY SHEET #9

## OTIS DOOR SURVEY SHEET

**POWER**                       **MANUAL**



REGULAR TYPE DOORS AT: \_\_\_\_\_  
 PASS TYPE DOORS AT: \_\_\_\_\_  
 STEEL PLATE  
 WOOD CORE

### PLAN SECTION OF OTIS DOOR

### CENTER LATCH

SURFACE    FLUSH    NONE  
 REUSE LATCH    PROVIDE NEW LATCHING

### SHEAVE LOCATION

**NOTE:**  
 HANDS OF ELEVATOR DOOR PARTS ARE  
 DETERMINED BY STANDING IN CAR FACING DOOR.

FLOOR	A	B	C	CA	D	E	F	G	H	I	P	QU	S	T	U	W	AA	BB	VV	WW	FP

V	SHEAVE DIAMETER	GG	CHAIN TYPE & SIZE	<input type="checkbox"/> LEAF	<input type="checkbox"/> ROLLER
DD	SHOE TYPE (GIVE SKETCH)	HH	CHAIN HANGER TYPE (GIVE SKETCH)		
EE	HAND OF INTERLOCKS <input type="checkbox"/> LH <input type="checkbox"/> RH	II	CENTER LATCH ON <input type="checkbox"/> UPPER <input type="checkbox"/> LOWER PANEL		
	(HAND DETERMINED STANDING ON CAR FACING DOOR)	JJ	ROOM SIDE LEVER	<input type="checkbox"/> YES	<input type="checkbox"/> NO
FF	CHAIN ROD LENGTH	TT	TRUCKING SILL SIZE		
		UU	DOOR FRAME ANGLE SIZE		

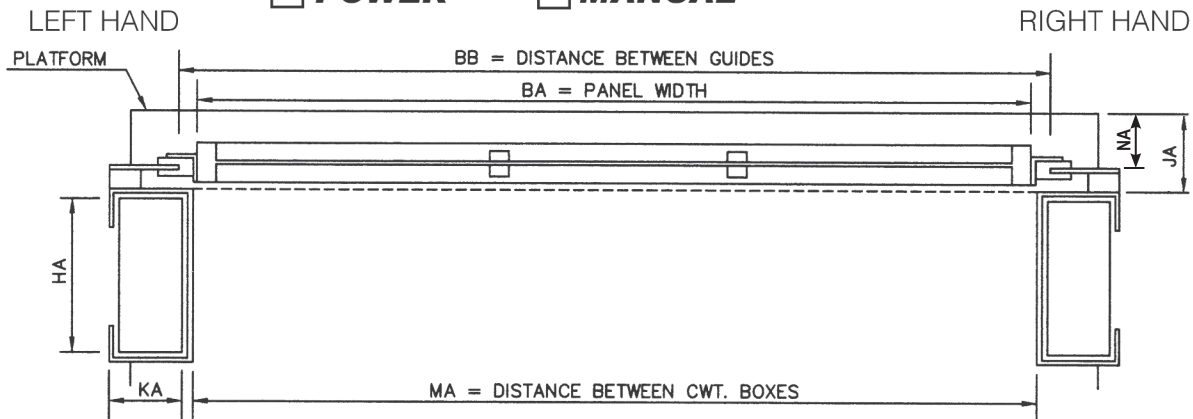




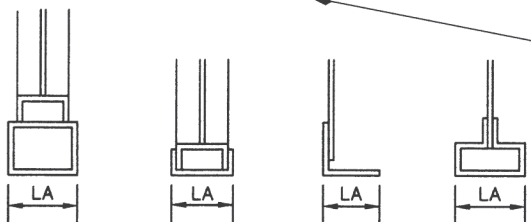
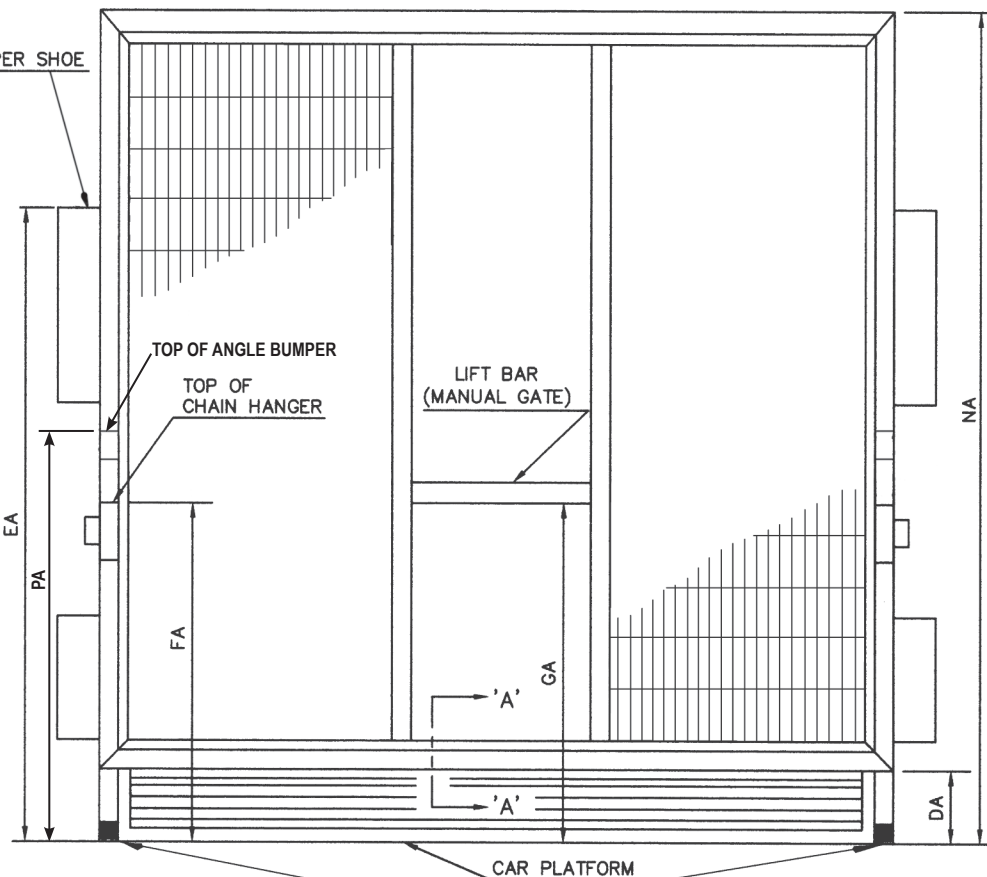
# SURVEY SHEET #10

## OTIS GATE PANEL REPLACEMENT SURVEY SHEET

POWER     MANUAL



- BB = \_\_\_\_\_
- BA = \_\_\_\_\_
- NA = \_\_\_\_\_
- DA = \_\_\_\_\_
- EA = \_\_\_\_\_
- FA = \_\_\_\_\_
- GA = \_\_\_\_\_
- HA = \_\_\_\_\_
- JA = \_\_\_\_\_
- KA = \_\_\_\_\_
- LA = \_\_\_\_\_
- MA = \_\_\_\_\_
- NA = \_\_\_\_\_
- PA = \_\_\_\_\_



DETAIL 'A'-'A' CIRCLE ONE

EXISTING GATE BUMPERS BELOW GATE PANEL?  
 YES  NO

**NOTE:**  
 GIVE SIZE AND LENGTH OF EXISTING GATE COUNTERWEIGHT, INDICATE IF TYPICAL BOTH SIDES.





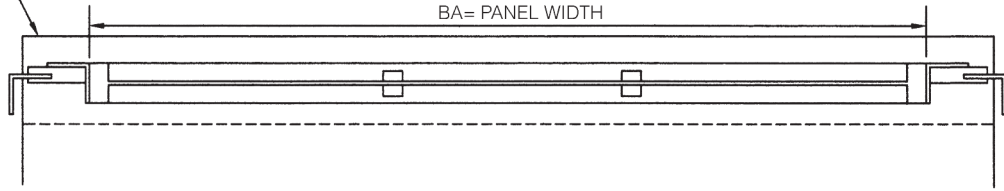
# SURVEY SHEET #11

## REVERSING EDGE SURVEY SHEET

LEFT HAND  
CAR PLATFORM

RIGHT HAND

CAR GATE  
BA= PANEL WIDTH

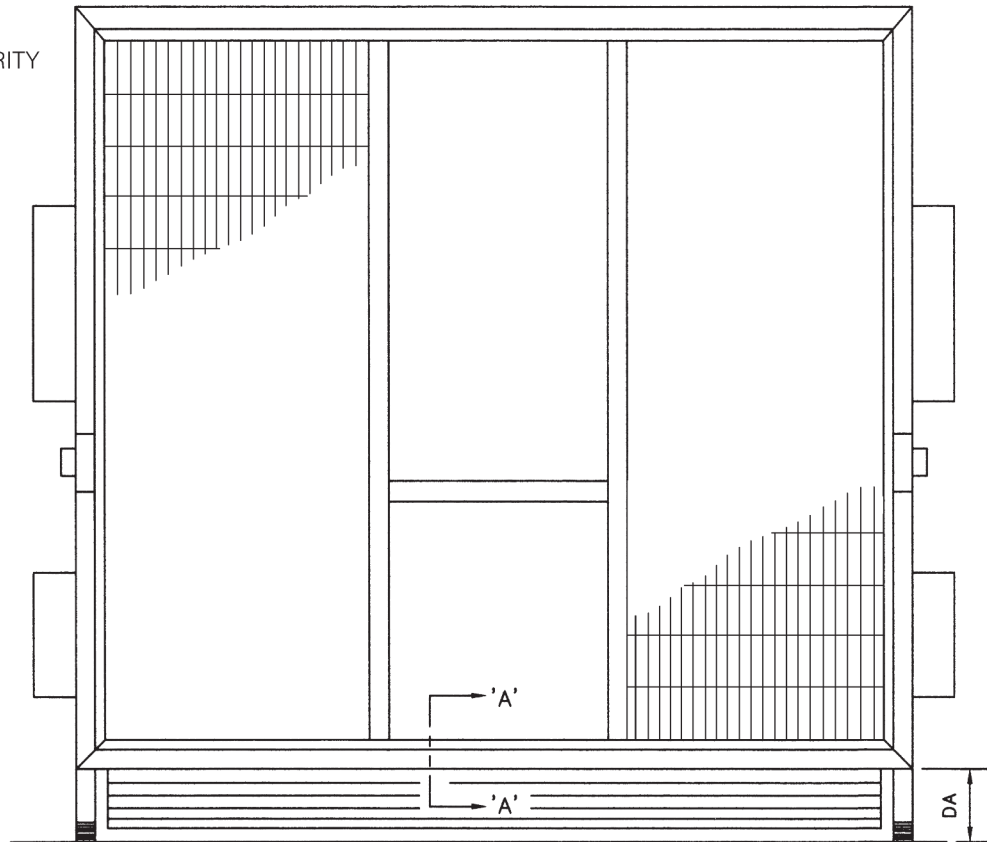


- PEELLE
- COURION/SECURITY
- GUILBERT
- HARRIS PREBLE
- OTIS

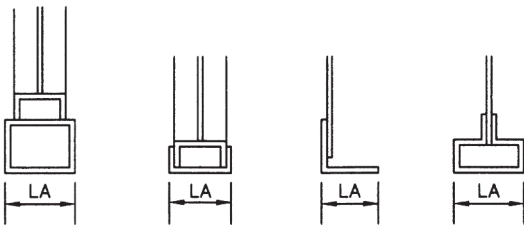
BA = \_\_\_\_\_

DA = \_\_\_\_\_

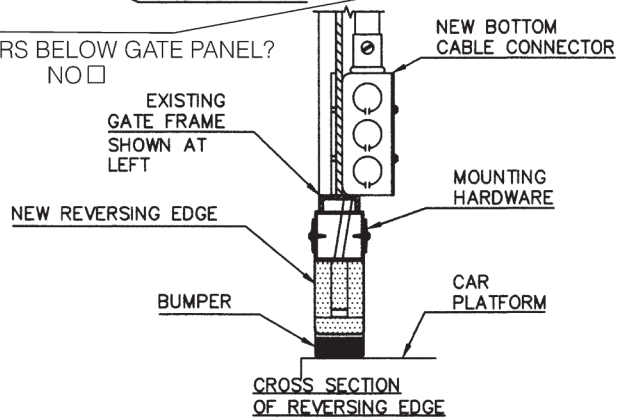
LA = \_\_\_\_\_



EXISTING GATE BUMPERS BELOW GATE PANEL?  
YES  NO



DETAIL 'A'-'A' CIRCLE ONE





# SURVEY SHEET #12

## NEW PEELLE CAR GATE SURVEY SHEET

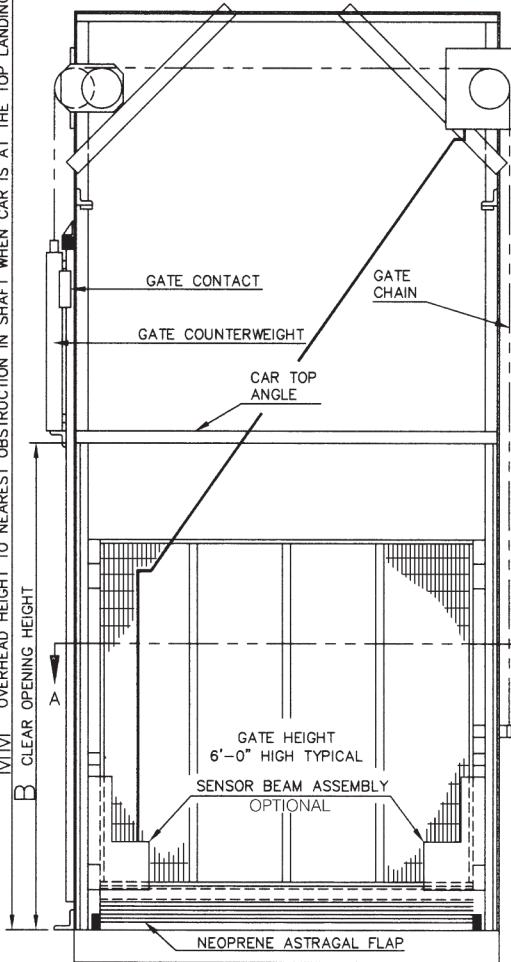
POWER  MANUAL

TOP OF SHAFT OR  
NEAREST OBSTRUCTION

### SINGLE SECTION CAR GATE PLAN VIEW SECTION A-A

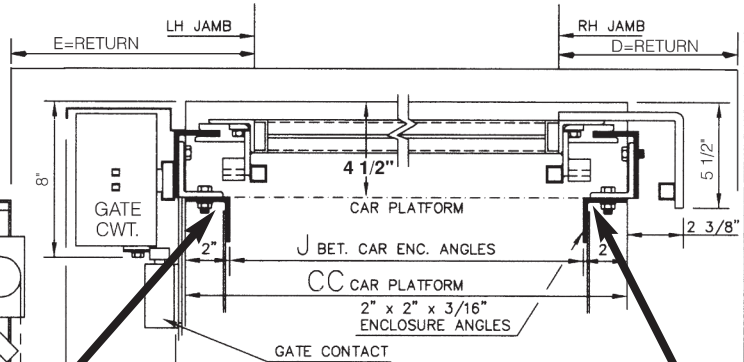
CUSTOMER NOTE:  
ADVISE CAR TOP  
OVER TRAVEL \_\_\_\_\_

MM OVERHEAD HEIGHT TO NEAREST OBSTRUCTION IN SHAFT WHEN CAR IS AT THE TOP LANDING



ELEVATION OF CAR GATE (SINGLE-SECTION)  
VIEWED FROM CAR

HANDS OF ELEVATOR DOOR HARDWARE ARE  
DETERMINED BY STANDING IN CAR FACING DOOR.

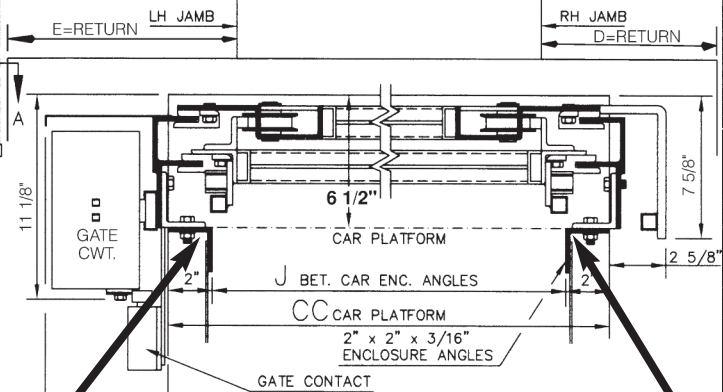


GIVE SIZE OF  
ENCLOSURE ANGLES \_\_\_\_\_ X \_\_\_\_\_ X 3/16"

B \_\_\_\_\_ D \_\_\_\_\_  
J \_\_\_\_\_ E \_\_\_\_\_  
CC \_\_\_\_\_  
MM \_\_\_\_\_

"MM" MUST EQUAL MINIMUM OF "B" PLUS 6"-1". INDICATE SIDE THAT  
GATE COUNTERWEIGHT AND GATE CONTACT ARE LOCATED:  
AS SHOWN  OPPOSITE TO SHOWN

### TWO-SECTION CAR GATE PLAN VIEW SECTION A-A



GIVE SIZE OF  
ENCLOSURE ANGLES \_\_\_\_\_ X \_\_\_\_\_ X 3/16"

B \_\_\_\_\_ D \_\_\_\_\_  
J \_\_\_\_\_ E \_\_\_\_\_  
CC \_\_\_\_\_  
MM \_\_\_\_\_

"MM" MUST EQUAL MINIMUM OF "B" PLUS 1/2 OF "B" PLUS 6". INDICATE  
SIDE THAT GATE COUNTERWEIGHT AND GATE CONTACT ARE LOCATED:  
AS SHOWN  OPPOSITE TO SHOWN

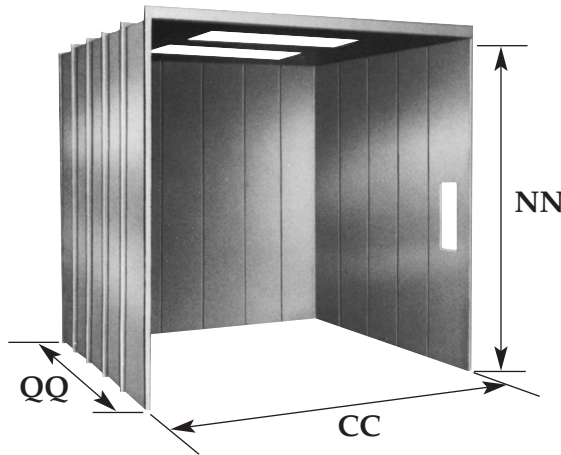




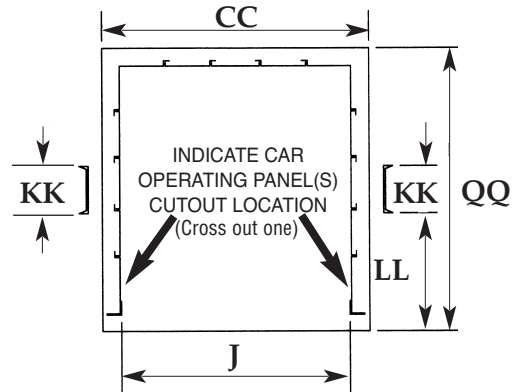
# SURVEY SHEET #13

## CAB ENCLOSURE SURVEY SHEET

### CAB ENCLOSURE



### PLATFORM SECTIONAL PLAN VIEW



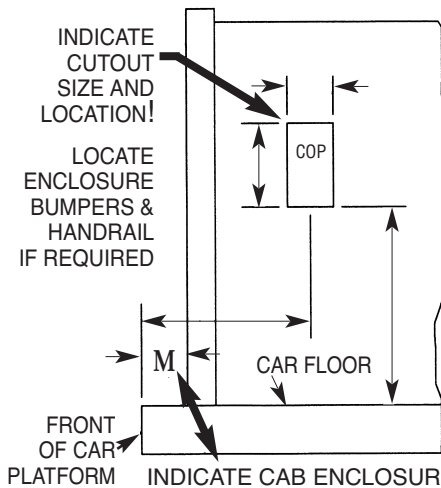
- CC. Car Platform Width \_\_\_\_\_
- QQ. Car Platform Depth \_\_\_\_\_
- NN. Car Opening Height \_\_\_\_\_
- J. Inside Cab Dimension \_\_\_\_\_
- LL. Front of Car to Stile \_\_\_\_\_
- KK. Size of Car Stile \_\_\_\_\_
- M. Cab Enclosure Angle Setback \_\_\_\_\_ below \_\_\_\_\_
- Door Opening Size: Width \_\_\_\_\_ Height \_\_\_\_\_
- Car Gate/Door Size: Width \_\_\_\_\_ Height \_\_\_\_\_
- Single-Section \_\_\_\_\_ Two-Section \_\_\_\_\_
- Two-Section (Solid Panel) Full-Car-Height Car Door \_\_\_\_\_
- Three-Section (Solid Panel) Full-Car-Height Car Door \_\_\_\_\_

### CAB ENCLOSURE INCLUDES:

- Side Panels of #14/2mm Gauge Construction
- Top Panels – heavy duty design
- Flush mounted Fluorescent Light Fixtures
- Hinged Emergency Exit Panel with Electric Contact
- Car Operating Station (COP) Cutouts
- Stile Mounting Brackets
- Car-to-Frame Anti-Sway Stabilizers
- Baked on Powder Coat Finish
- Mounting Carriage Bolts (one size diameter, two different lengths)

### CAR OPERATING PANEL LOCATION

#### SIDE ELEVATION



INDICATE CAB ENCLOSURE SETBACK: As of March 2002:  
 115mm/4.5 in. single-section Peelle car gate, or  
 165mm/6.5 in. two-section Peelle car gate, or  
 190mm/7.5 in. two-section full-car-height Peelle car door, or  
 216mm/8.5 in. three-section full-car height Peelle car door.

### Peelle Cab Enclosure Specifications

**General:** Furnish a complete PEELLE cab enclosure as shown on the plans. The enclosure shall have a clear opening width of \_\_\_\_\_, a clear depth of \_\_\_\_\_, and a clear height of \_\_\_\_\_. The cab enclosure shall comply with the latest Code for Elevators/Lifts (A17.1, B44, EN81). Equipment shall comply with IP10/NEMA 1 specifications unless specified for special environments.

**Cab Enclosure Construction:** The cab side walls shall be of not less than 2mm/14 gauge sheet steel, properly braced and reinforced. It shall be practically flush on the inside, securely and rigidly fastened. The cab top shall be of not less than 2mm/14 gauge sheet steel, so designed as to be capable of sustaining a load of 135kg on any 0.36m square area (300 lbs. on any 2 ft. square). A hinged emergency exit with an emergency exit contact shall be provided in the cab top. If bumpers are supplied, cab enclosures in excess of 3000mm/10 ft. in width or height shall be constructed with additional support.

**Lighting:** Light fixtures 2-tube fluorescent 1220mm/4 ft. long shall be provided, as required. Recessed light fixtures shall be practically flush with the cab top interior. At least two light fixtures are recommended for car platform depths greater than 2500mm/8 ft.; one light fixture for every 1220mm/4 ft. of depth. Two in-line light fixtures per door line are recommended for car platform widths greater than 2500mm/8 ft. For example, a 3000mm/10 ft. wide by 3000mm/10 ft. deep car platform should have 4 light fixtures. At least two lights, one near front and one near rear, are recommended for cars with front and rear openings.

**Fixture Cutouts:** All required cab enclosure fixture cutouts shall be provided by Peelle. Cutouts shall have perimeter steel angles for added strength. Fixtures shall be furnished by others.

**Finish:** Enclosure panels shall be given one coat of baked powder coat finish.

**Car Gate/Car Door Mounting:** Cab enclosure shall be arranged for mounting of Peelle car gates/car doors.





Phone +1 905 846 4545

Toll Free +1 800 787 5020

Fax +1 905 846 2161

[sales@peelledoor.com](mailto:sales@peelledoor.com)

[www.peelledoor.com](http://www.peelledoor.com)