

Modular Collator Base

Manual



Thiele
Technologies
A Barry-Wehmler Company

Streamfeeder
®

Part Number: 00900480

© 2009 Thiele Technologies, Inc. - Streamfeeder. All rights reserved.

No part of this publication may be reproduced, photocopied, stored on a retrieval system, or transmitted without the express written consent of Thiele Technologies, Inc. - Streamfeeder.

Thiele Technologies, Inc. - Streamfeeder
103 Osborne Road
Minneapolis, MN 55432-3120 USA

TEL: 763.502.0000
FAX: 763.502.0100
E-MAIL: service@streamfeeder.com
WEB: www.streamfeeder.com

Printed in the USA.

CONTENTS

Before You Begin	ii
Specifications	v
Section 1: About the Machine	1
Section 2: Service and Maintenance	4
Section 3: Mechanical Components	6
Section 4: Electrical Components	41
Section 5: Optional Components	55

BEFORE YOU BEGIN

Message Conventions



DANGER signifies an action or specific equipment area that can result in serious injury or death if proper precautions are not taken.



WARNING signifies an action or specific equipment area that can result in personal injury if proper precautions are not taken.



CAUTION signifies an action or specific equipment area that can result in equipment damage if proper precautions are not taken.



ELECTRICAL DANGER signifies an action or specific equipment area that can result in personal injury or death from an electrical hazard if proper precautions are not taken.



TIP signifies information that is provided to help minimize problems in the installation or operation of the feeder.



NOTE provides useful additional information that the installer or operator should be aware of to perform a certain task.



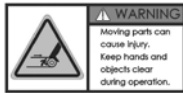
IMPORTANT alerts the installer or operator to actions that can potentially lead to problems or equipment damage if instructions are not followed properly.

Warning Label Descriptions

WARNING LABELS affixed to this product signify an action or specific equipment area that can result in serious injury or death if proper precautions are not taken.



Hazardous voltage. Contact will cause electric shock or burn. Turn off and lock out power before servicing.



Moving parts can crush and cut. Keep guards in place. Lock out power before servicing.



Strong Magnetic Field. Interaction with metallic objects may produce Pinch Hazards. Persons with Medical Implants KEEP BACK 12 inches.

SAFETY

Make sure you thoroughly read this section to become familiar with all the safety issues relating to the safe operation of this product.

Please read all of the warnings that follow to avoid possible injury. Although we have made every effort to incorporate safety features in the design of this product, there are residual risks that an installer or operator should be aware of to prevent personal injury.

Please read all of the cautions that follow to prevent damage to this product. This product is built with the highest quality materials. However, damage can occur if the system is not operated and cared for within design guidelines as recommended by Streamfeeder.

Danger



To insure proper machine operation make sure that all the safety devices are installed properly and functioning. Do not attempt to defeat a safety interlock or safety feature.

Equipment interior contains incoming 115VAC electrical power. Bodily contact with these high voltages can cause electrocution, which can result in serious injury or death.

Electrical Noise

Electromagnetic interference (EMI) and radio frequency interference (RFI), also known as electrical noise, do not usually cause problems. If intense enough, however, it can cause problems for other electrical equipment.

SPECIFICATIONS

Maximum Product Size: 18 in. W x 12 in. L (457 mm x 304 mm)

Minimum Product Size: 3 in. W x 3 in. L (76 mm x 76 mm)

Speed: 0-2160 in/min (54,864 mm/min)

Conveyor Length: 11 ft. (3352 mm)

Conveyor Height: Adj. Max. 38 in. (965 mm), Min. 34 in. (84 mm)

Side Guide Height: 2 in. (51 mm)

Lug Width/Height: 1 in. (25.4 mm)/1.875 in. (47.6)

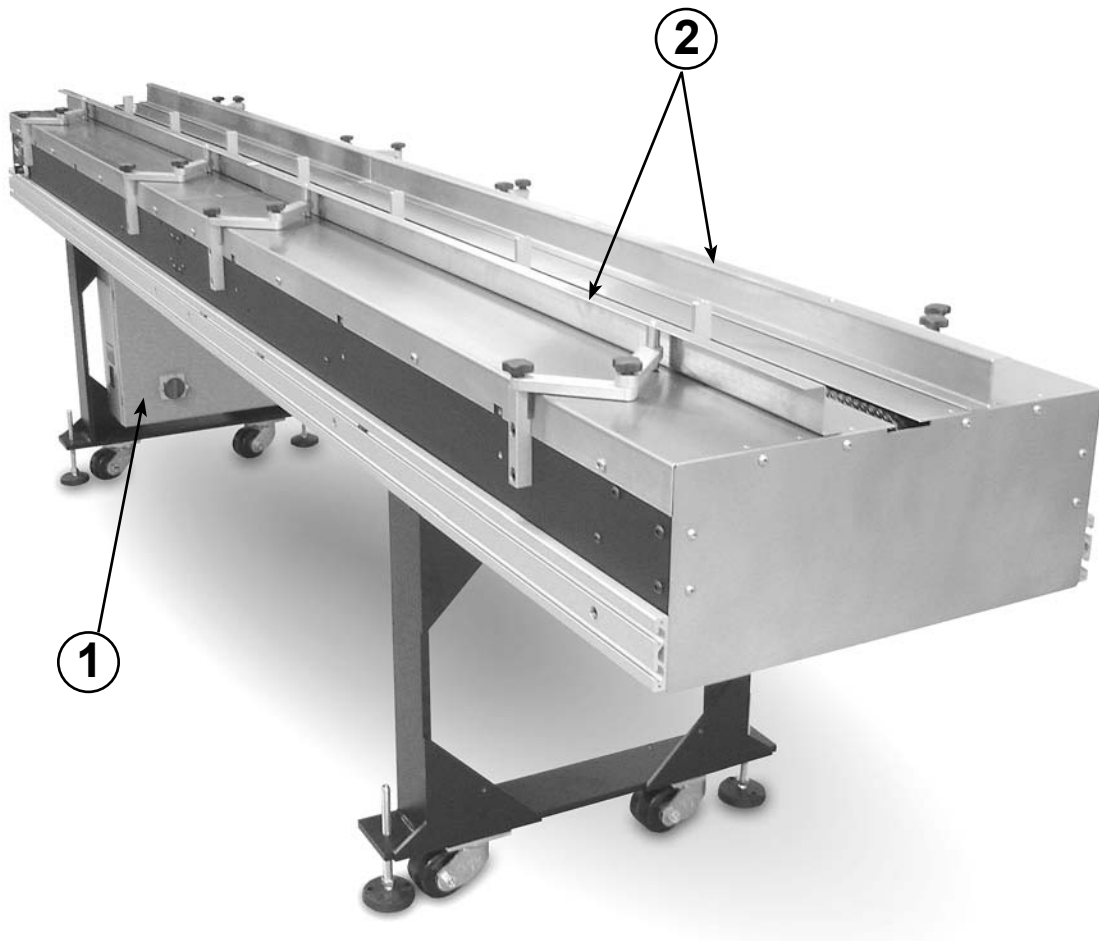
Lug Spacing: 18 in. (457 mm)

Electrical Requirements: 115/230vac, 50/60Hz, 15A

Weight:..... 600 lbs. (272 kg)

1 About the Machine

Modular Collator Base Components



COMPONENTS

1. Control Box
2. Conveyor Side Guides

Not Shown:

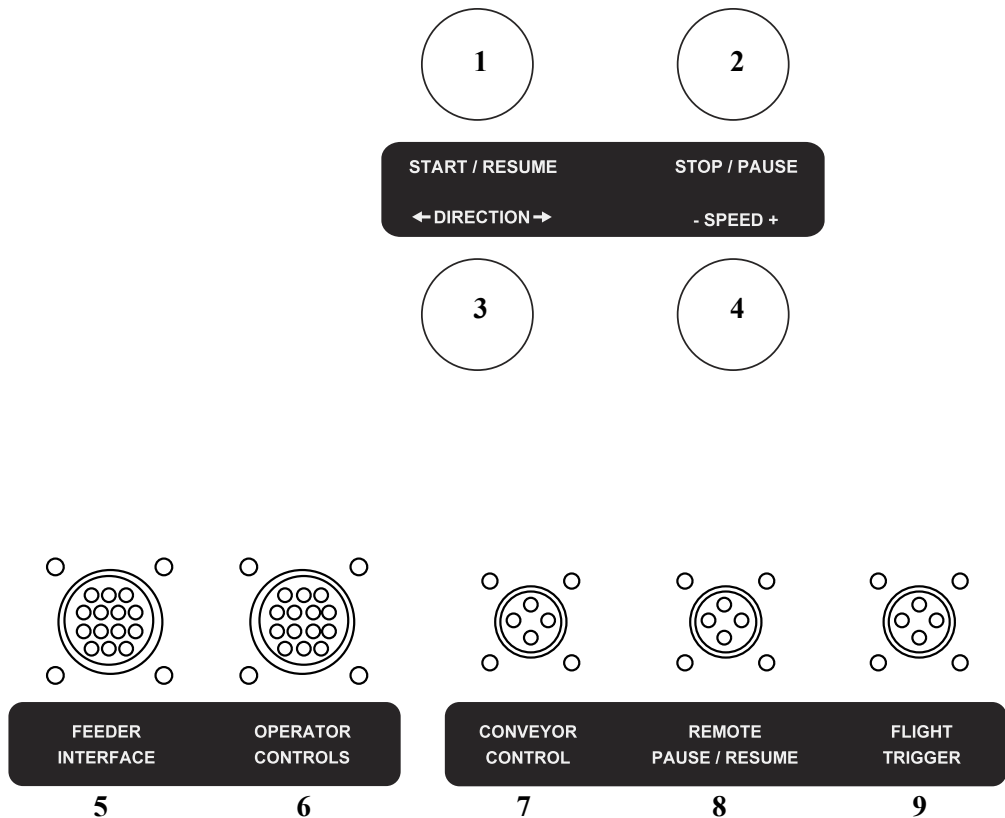
Feeder Power and I/O Interface

Minarek Drive (optional with StreamNet or FeedNet)

Modular Collator Base Components (continued)

1. CONTROLS

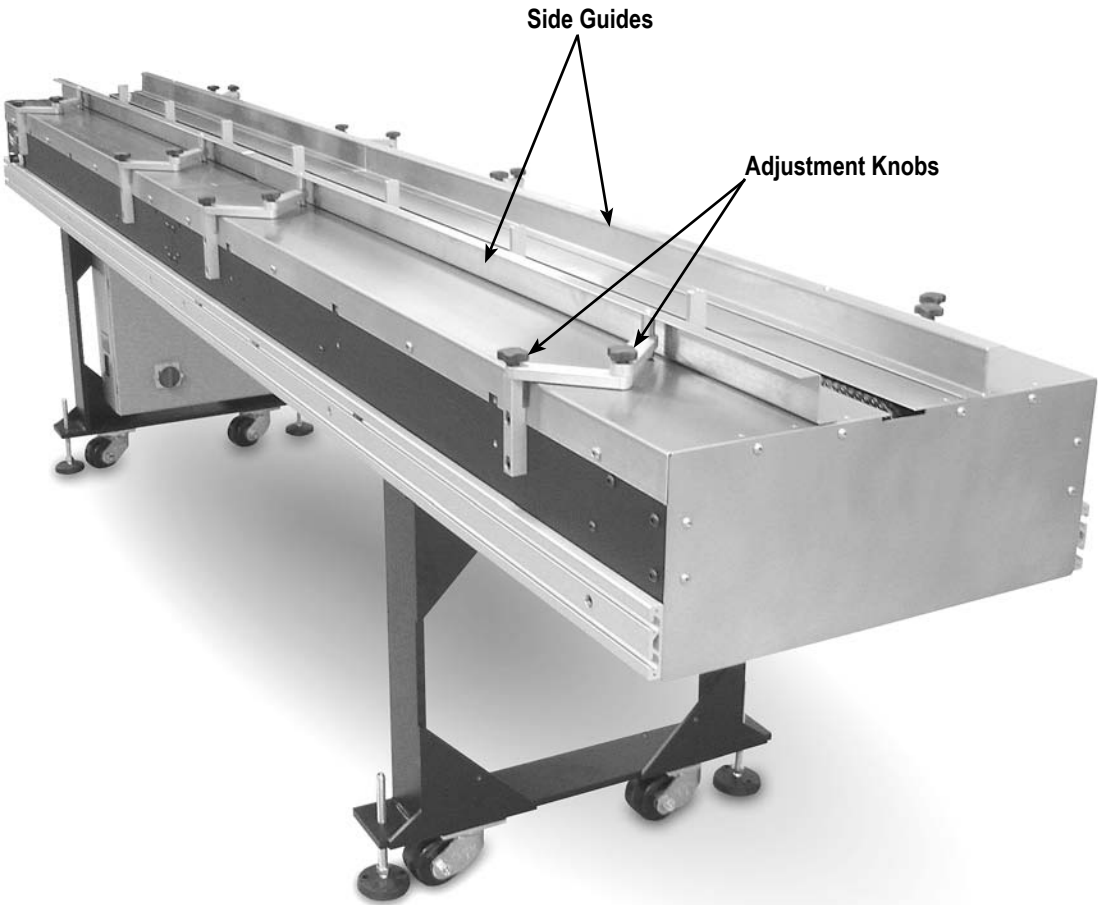
1. **Start/Resume:** Press to start or resume collator.
2. **Stop/Pause:** Press to stop or pause collator.
3. **Direction:** Controls direction of collator.
4. **Speed:** Turn CW to increase speed, CCW to decrease speed.
5. **Feeder Interface:** Cable routing for the feeder interface.
6. **Operator Controls:** Cable routing for the operator controls.
7. **Conveyor Control:** Cable routing for the conveyor control.
8. **Remote Pause/Resume:** Cable routing for the remote controls.
9. **Flight Trigger:** Cable routing for the flight trigger.



Modular Collator Base Components (continued)

2. Conveyor Side Guides

The collator base side guides are adjustable to accommodate the varying sizes of products. To adjust, simply loosen all the knobs and slide the side guide open to allow for wider material or closed to allow for narrower material. The guides should be adjusted with equal distance from lug (or pusher). The side guides can be adjusted the length of the conveyor as well.



2 Service and Maintenance

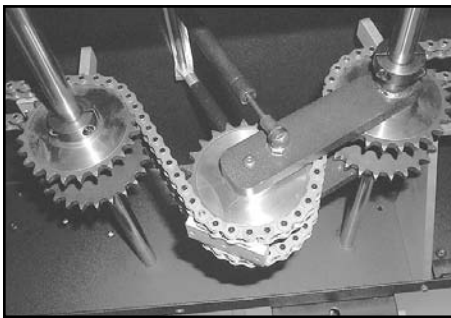
Daily: Using a mild stainless steel polish, clean the collator base by wiping with a clean cloth.

Every 90 days: The following maintenance procedures should be performed by a factory-trained technician. Under normal usage, these tasks should be completed every three months:

- Lightly oil the chain (10W-40 lubricant)
- Grease the bearing blocks
- Check chain tension - adjust as needed

Chain Tension Adjustment

The chain tension is automatically adjusted via the gas struts and tensioning idler shaft.



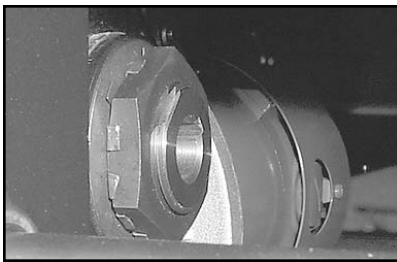
Tensioner Assembly P/N 14581109

The gas shocks and tensioner idler shaft in the Tensioner Assembly (P/N 14581109) automatically set the chain tension. Therefore, adjustments in chain tension are not required. See below view for additional detail.

Torque Limiter Adjustment

The Torque Limiter assembly (P/N 13901116) on the Motor Drive assembly (P/N 14581107) is set at the factory and does not require any adjustment unless the Torque Limiter is replaced.

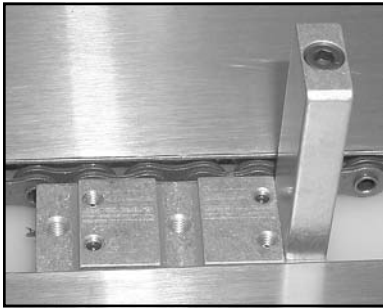
To adjust the Torque Limiter assembly, accomplish the following:



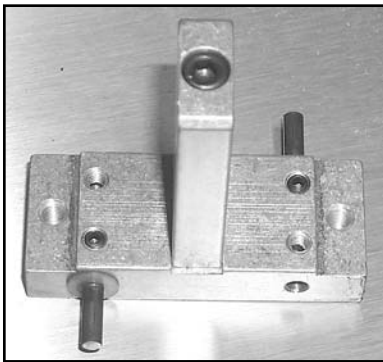
Torque Limiter Assembly P/N 13901116

Place the Torque Limiter assembly on the gear box shaft and tighten the torque limiter assembly. To test, run the conveyor at operating speed for one hour, and then stop the conveyor by blocking with a solid bar perpendicular to the travel direction. If tensioned correctly, the lug will stop immediately and begin in motion once released. In the event the lug does not start immediately, the tension is too great and the tensioning assembly must be loosened. Repeat the aforementioned as necessary to achieve the correct results. See below view for additional detail.

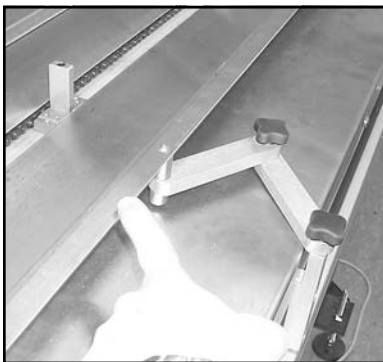
Lug Spacing Adjustment



Lug Assembly P/N 14581116



Lug Assembly P/N 14581116



Material Guides



Main Table Top P/N 51458002

In order to change the lug spacing, there must be an equal amount of chain length, in half-inch increments, for the amount of pockets desired. For example, if you have a one-hundred foot chain length and desire 50 pockets, then the lug spacing will be 24 inches ($100' \times 12 = 1200$ inches divided by 50 pockets = 24 inch lug spacing). In the event, the amount of distance between lugs does not divide equally, accomplish one or more of the following:

Add or remove chain link(s), P/N 51390110.

Change pusher lug (P/N 51458021) location on the pusher lug mount (P/N 51458007), as shown below.

Change the quantity of pockets desired.

To remove and replace the lug assemblies for desired pusher lug placement, accomplish the following:

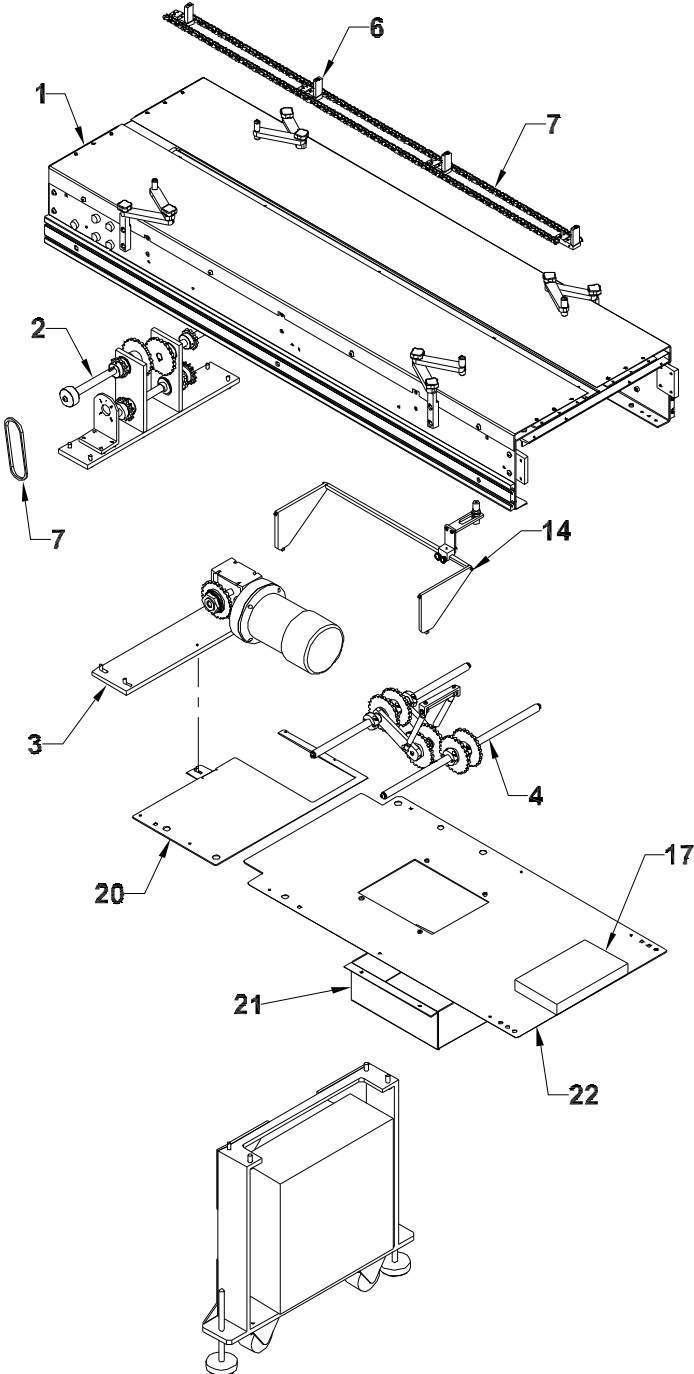
Once the proper lug spacing has been determined for the length of chain on the modular collator base, next remove the Material Guides.

Then remove the Main Table Top (P/N 51458002).

Identify which pusher lug assembly to begin measuring the pocket size or lug spacing from and mark for later identification. Once the main table top has been removed and identification of the first lug has been completed, advance the chains by hand to an area on the top of the collator base where there is adequate side-to-side movement of each chain to allow for the lug assembly to be removed from the individual chain links. You will now measure the distance determined from the previously identified lug and install the pusher lug assembly by inserting the pin connectors (P/N 51458029) into the appropriate hollow pin chain link. Ensure the pin connectors are installed to prevent them from causing a catch point during the travel of the pusher lug through the modular collator base. This can be adjusted by loosening the set screws on the lug assembly and relocating the pin connector and refastening the set screws. Repeat this process as many times as required to establish the predetermined lug spacing or pocket size. There should be an equal amount of distance between all lug assemblies when completed.

Note: If the lug spacing is not equal throughout the entire length of the modular collator base, feeder timing accuracy may be significantly impacted.

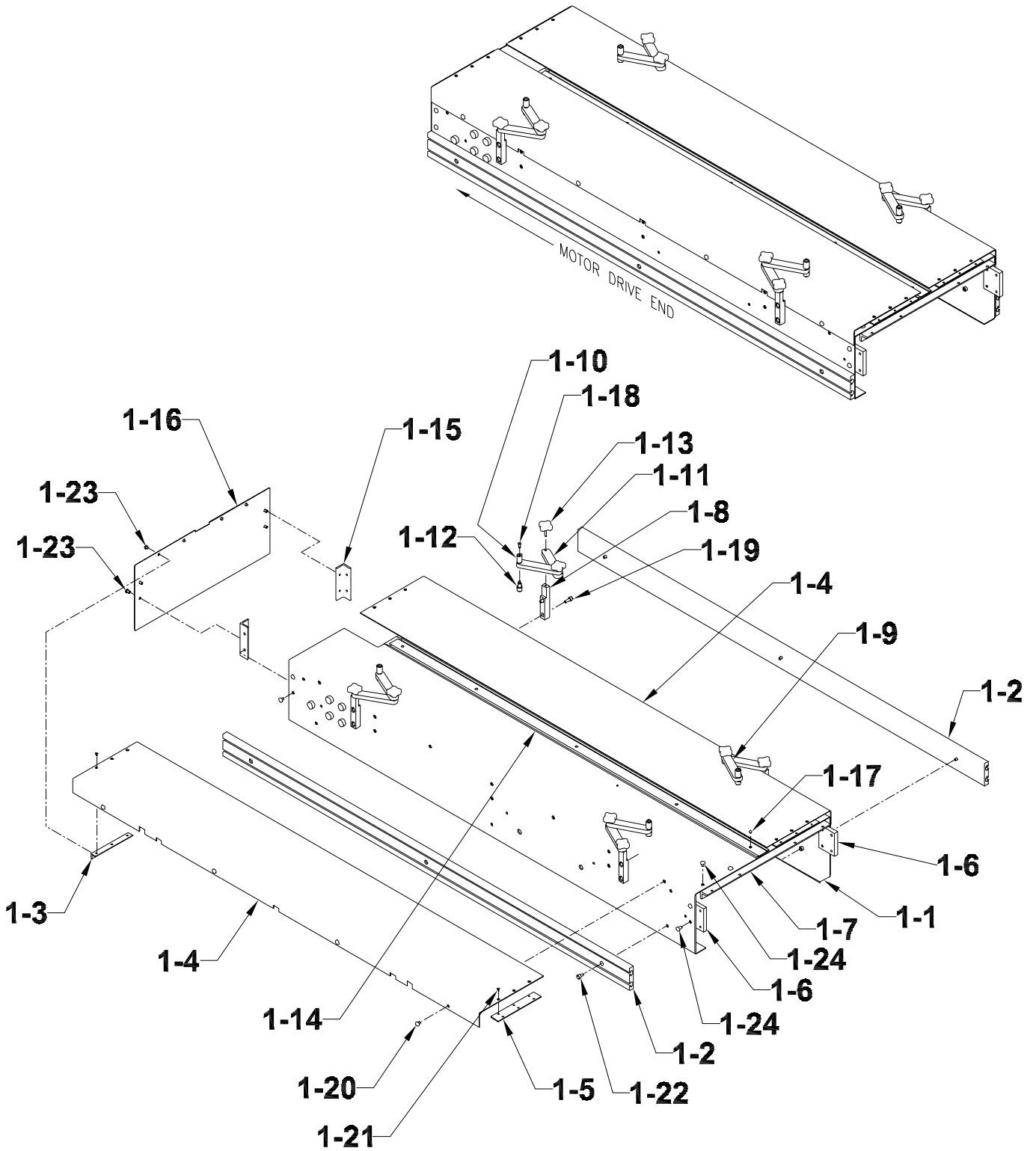
3 Mechanical Components



Drive End Conveyor Assembly
Assembly: 14581102

Diagram Number	Qty	Description	Part Number
1	1	Conveyor Base Assembly, Drive	14581103
2	1	Gear Carriage Assembly	14581106
3	1	Motor Drive Assembly	14581107
4	1	Tensioner Assembly	14581109
5	1	Upright Assembly	14581108
6	15	Lug Assembly	14581116
7	593 in 4	#40 Hollow Pin Chain link #40 Master Link	51390110 51390111
14	1	Flight Sensor Assembly	14581147
17	1	Convolutod Foam (cut to fit)	51458149
20	1 5	Drive End Small Bottom Plate BHCS, 1/4-20 x 1/2	51458146 00002350
21	1 4	Gear Guard BHCS, 1/4-20 x 1/2	51458145 00002350
22	1 6	Drive End Bottom Plate BHCS, 1/4-20 x 1/2	51458144 00002350

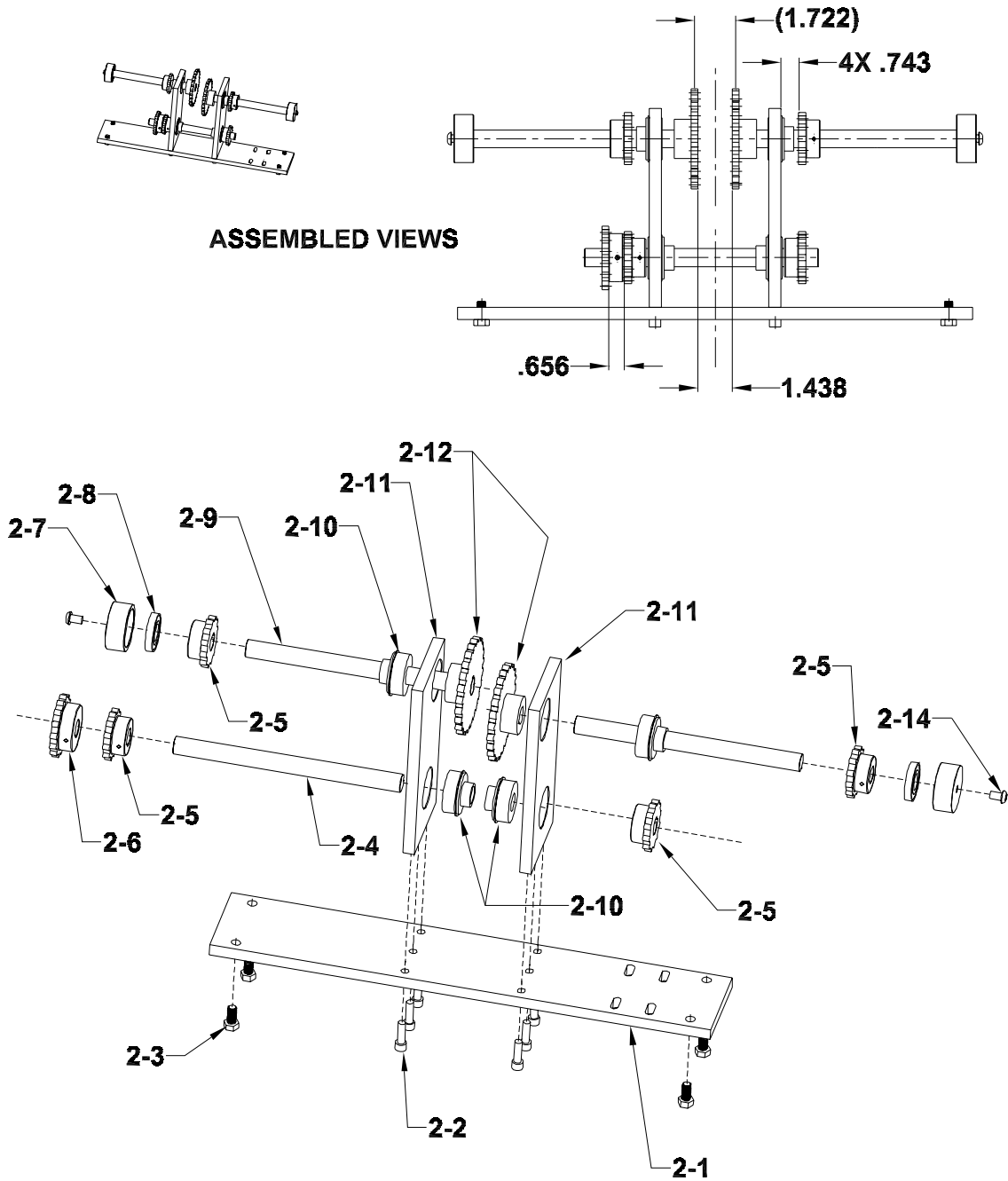
1. Conveyor Base, Drive End
Assembly: 14581103



1. Conveyor Base, Drive End
Assembly: 14581103

Diagram Number	Qty	Description	Part Number
1-1	1	Bottom Main Section	51458001
1-2	2	T-Channel	51458015
1-3	2	Endplate Bracket	51458055
1-4	2	Main Table Top	51458002
1-5	2	Top Locking Bracket	51458003
1-6	2	Side Locking Bracket	51458004
1-7	1	Bottom Locking Bracket	51458005
1-8	4	Side Guide Support	51390052
1-9	4	Side Guide Mounting Arm, Top	51458047
1-10	4	Side Guide Mounting Stud	51458048
1-11	4	Side Guide Mounting Arm, Bottom	51458046
1-12	4	Side Guide Mounting Foot	51458049
1-13	8	Comfort Knob	51458070
1-14	1	Chain Guide	51458028
1-15	2	End Plate Bracket	51458055
1-16	1	End Plate	51458024
1-17	5	BHCS 8-32 X 3/8	00002306
1-18	4	BHCS 10-32 X 1/2	00002834
1-19	8	SHCS 5/16-18 x 3/4	00003457
1-20	12	BHCSS/S 5/16-18 x 3/8	00003455
1-21	12	FHCSS/S 6-32 x 3/8	00003453
1-22	8	SHCS 5/16-18 x 1/2	00003454
1-23	8	BHCSS/S 1/4-20 x 1/4	00003391
1-24	4	BHCS 5/16-18 x 1/2	00003456
N/S	1	Flight Sensor Slidebar	51458083
N/S	2	Flight Sensor Crossbar	51458082
N/S	1	Flight Sensor Mounting Bracket	44846052
N/S	1	Flight Sensor Mounting Block	51458084
N/S	1	Sensor 50mm Diffuse Reflective	53500038

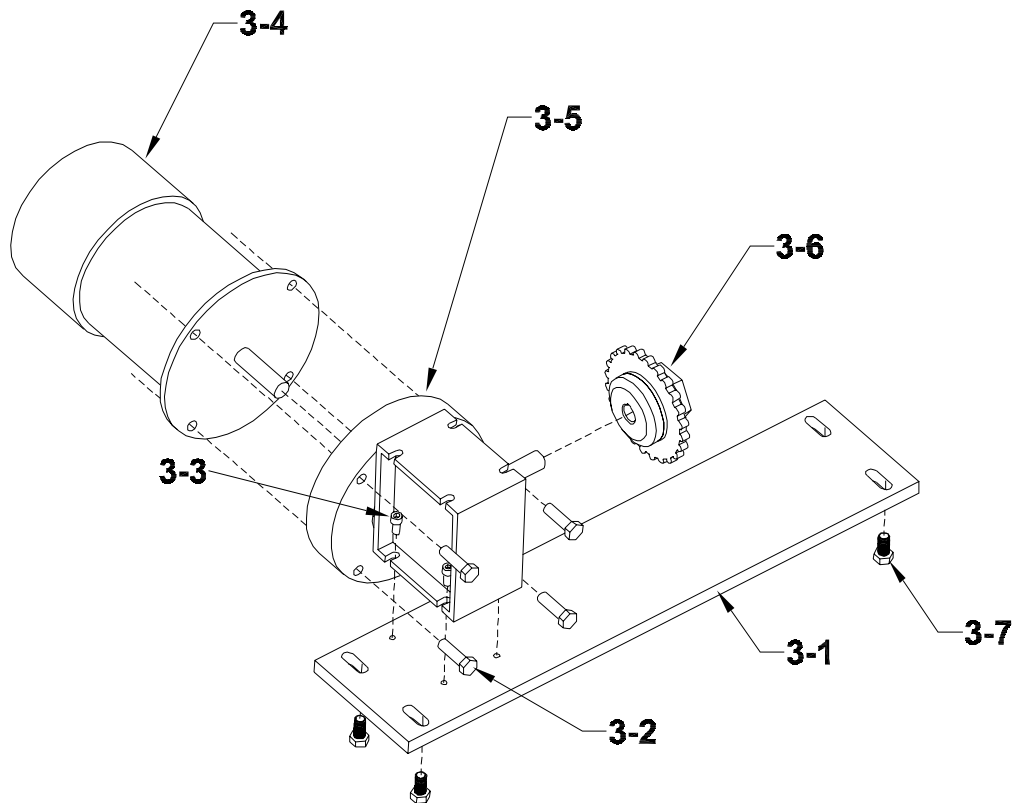
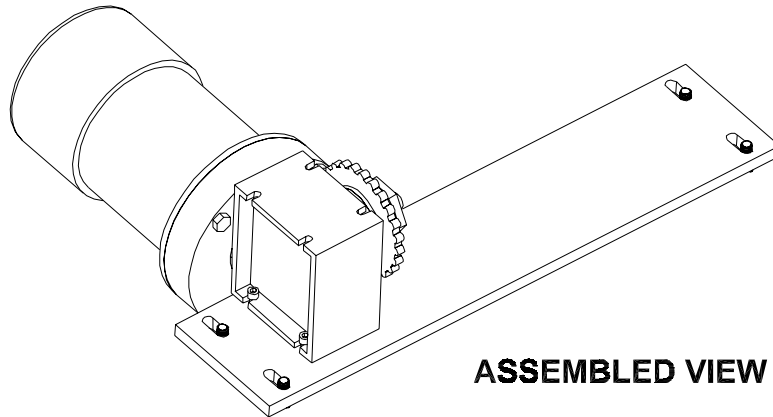
2: Gear Carriage Assembly Assembly: 14581106



2: Gear Carriage Assembly
Assembly: 14581106

Diagram Number	Qty	Description	Part Number
2-1	1	Gear Carriage mount	51458006
2-2	6	SHCS, 5/16-18 X 1	00002331
2-3	4	Hex Hd bolt, 3/8-16 x 3	00003376
2-4	1	Jack Shaft	51458018
2-5	4	Driven pulley, 12T	51458020
2-6	1	Drive Pulley, 15T	51458019
2-7	2	Bearing Cup	51458026
2-8	2	Bearing Gear Carriage	51458069
2-9	2	Drive Shaft	51458011
2-10	4	Bearing	51458017
2-11	2	Upright Bearing Mount	51458008
2-12	2	24 Tooth Sprocket Conveyor	51390071
2-13	2	BHCS, 5-16- 18 x 1/2	00003452

3: Motor Drive Assembly
Assembly: 14581107

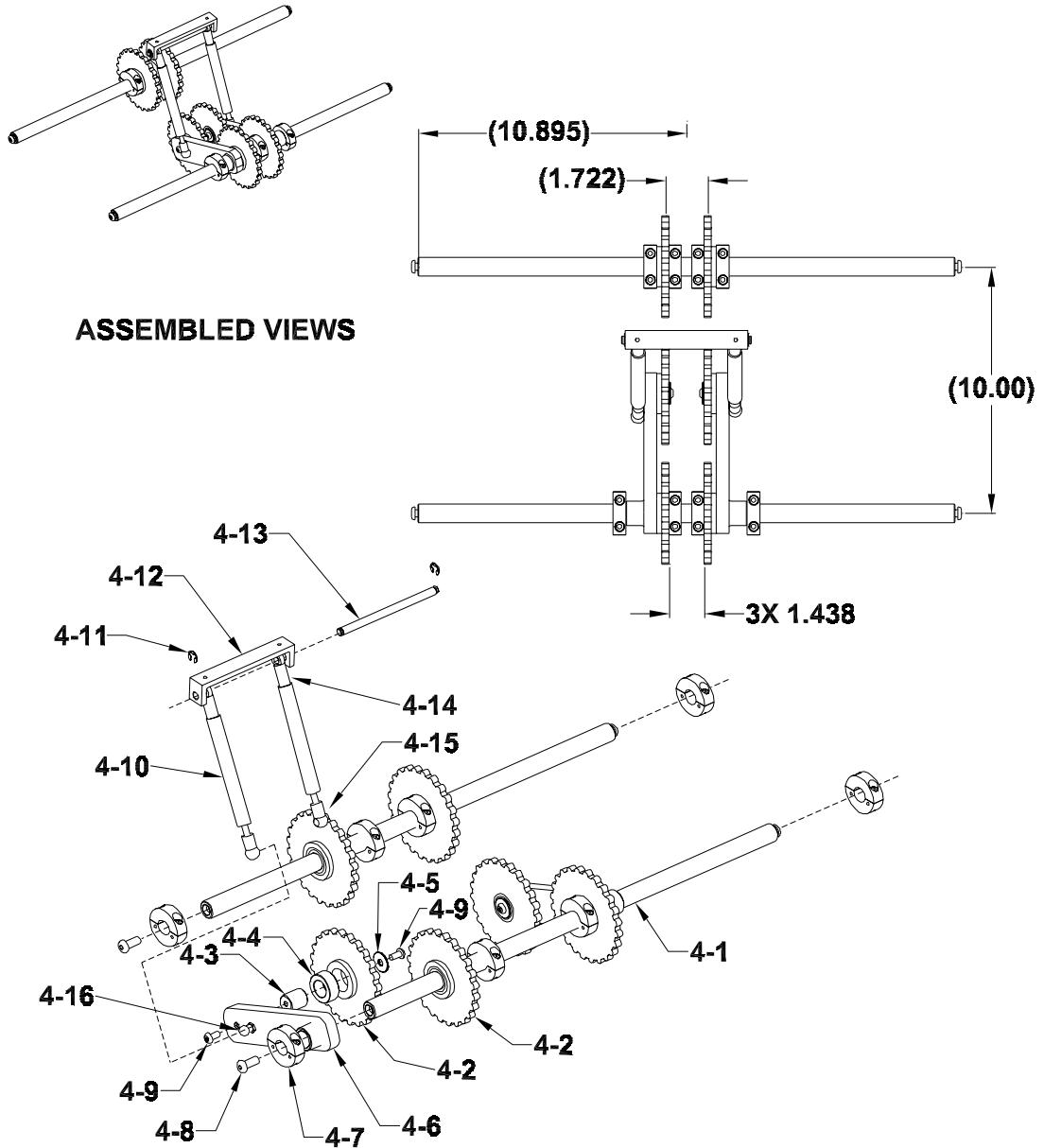


3: Motor Drive Assembly
Assembly: 14581107

Diagram Number	Qty	Description	Part Number
3-1	1	Motor Mount	51458013
3-2	4	Hex HD bolt 3/8-16 UNC x 1-1/4	00003375
3-3	4	SHCS, 1/4-20 UNC x 1/2	00002360
3-4	1	Motor	51390010
3-5	1	Gear Box	51390007
3-6	1	5/8 drive Torque Limiter Assembly	13901116
3-7	4	Hex Hd Bolt, 3/8-16 x 3/4	00003376

4: Tensioner Assembly

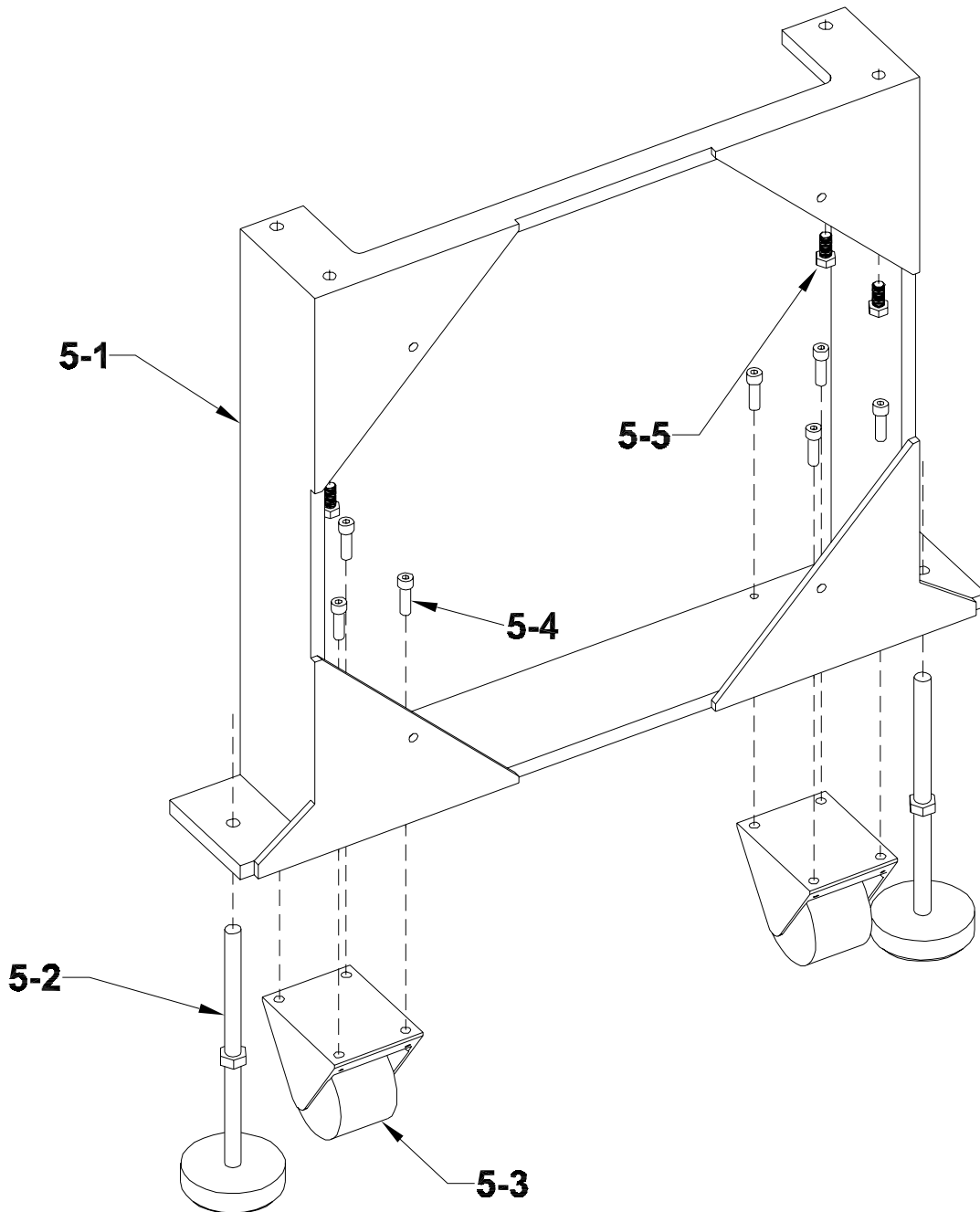
Assembly: 14581109



4: Tensioner Assembly
Assembly: 14581109

Diagram Number	Qty	Description	Part Number
4-1	2	Tensioner Idler Shaft	51458054
4-2	6	24T Idler Sprocket	51458060
4-3	2	Stub Shaft	51458053
4-4	6	Bearing	51458051
4-5	2	End Cap	51458050
4-6	2	Tensioner Arm	51458052
4-7	8	Collar	23500138
4-8	4	BHCS, 5/16-18 UNC X 3/4	00003345
4-9	4	BHCS, 1/4-20 UNC X 1/2	00002350
4-10	2	Gas Shock	51458043
4-11	2	E-Clip, 1/4	00001145
4-12	1	Gas Shock Mount	51458042
4-13	1	Gas Shock Mounting Pin	51458044
4-14	2	Gas Shock Rod End	51458057
4-15	2	Gas Shock Ball End	51458058
4-16	2	Gas Shock Ball Stud	51458059

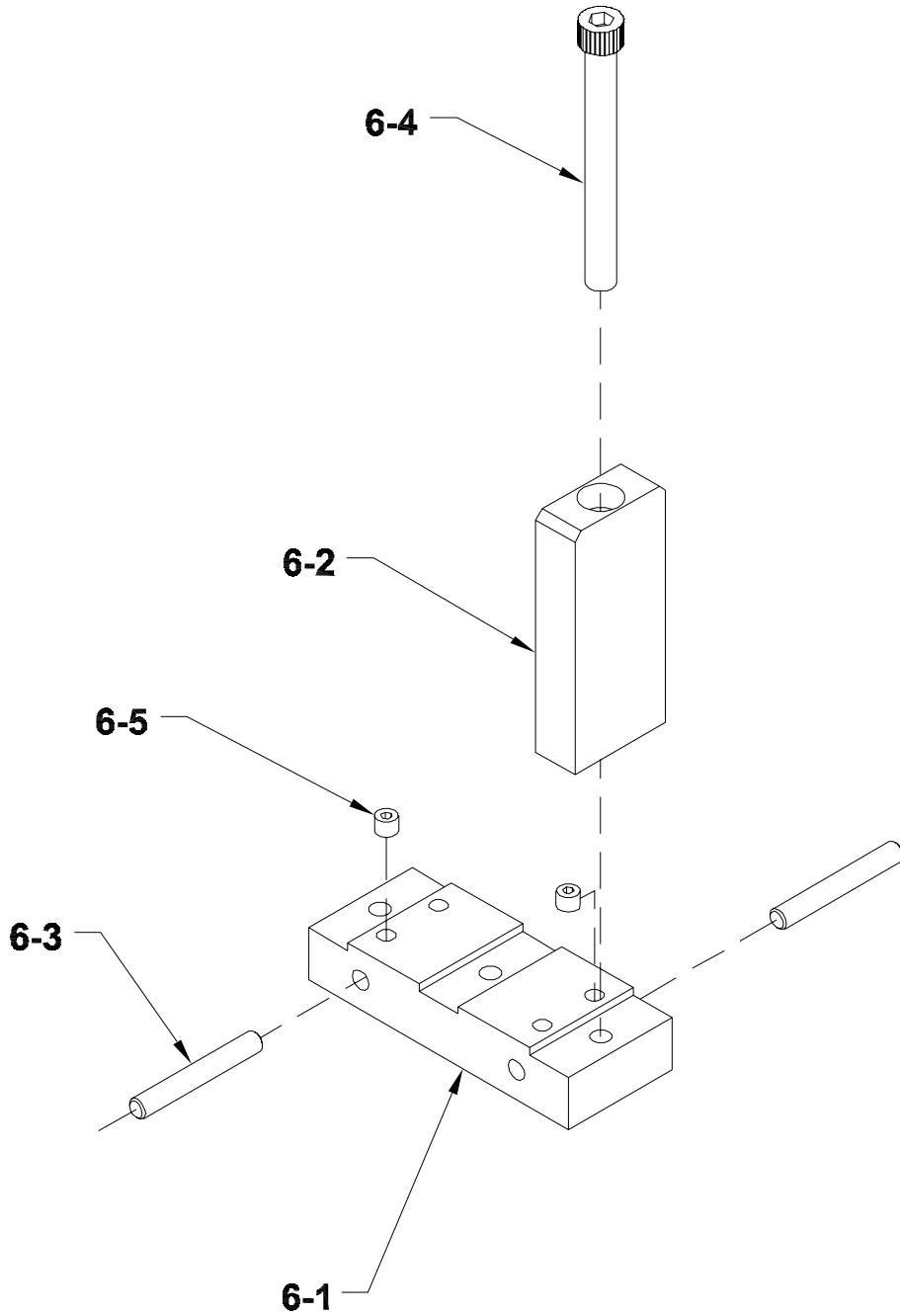
5: Upright Assembly
Assembly: 14581108



5: Upright Assembly
Assembly: 14581108

Diagram Number	Qty	Description	Part Number
5-1	1	Leg Weldment	51458036
5-2	2	Leg Leveler	51021025
5-3	2	Caster	51458027
5-4	8	SHCS, 5/16-18 UNC x 1	00002331
5-5	4	Hex HD Bolt, 3/8-16 UNC x 3/4	00003376

6: Lug Assembly
Assembly: 14581116



6: Lug Assembly
Assembly: 14581116

Diagram Number	Qty	Description	Part Number
6-1	1	Pusher Lug Mount	51458007
6-2	1	Pusher Lug	51458021
6-3	2	Pin Connector	51458029
6-4	1	SHCS, 10-32 X 2	00002323
6-5	2	Set Screw, 8-32 x 1/8	00002402

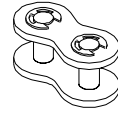
NOTE:

Quantity 15 lugs required for a standard 11" flighted conveyor based on 18" flight spacing.
Additional 6 lugs are required per middle section based on 18" flight spacing.

7: Chain and Master Link

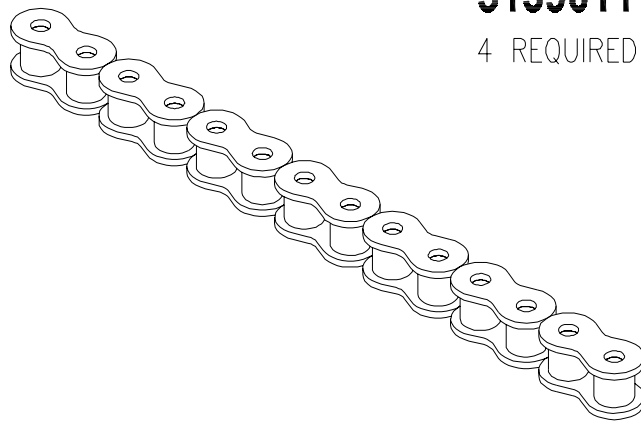
<u>Diagram Number</u>	<u>Qty</u>	<u>Description</u>	<u>Part Number</u>
7	47'	#40 Hollow Pin Chain link	51390110
	4	#40 Master Link	51390111

7: Chain and Master Link



MASTER LINK 51390111

4 REQUIRED



270 IN. NEEDED FOR IDLER & DRIVE ENDS.

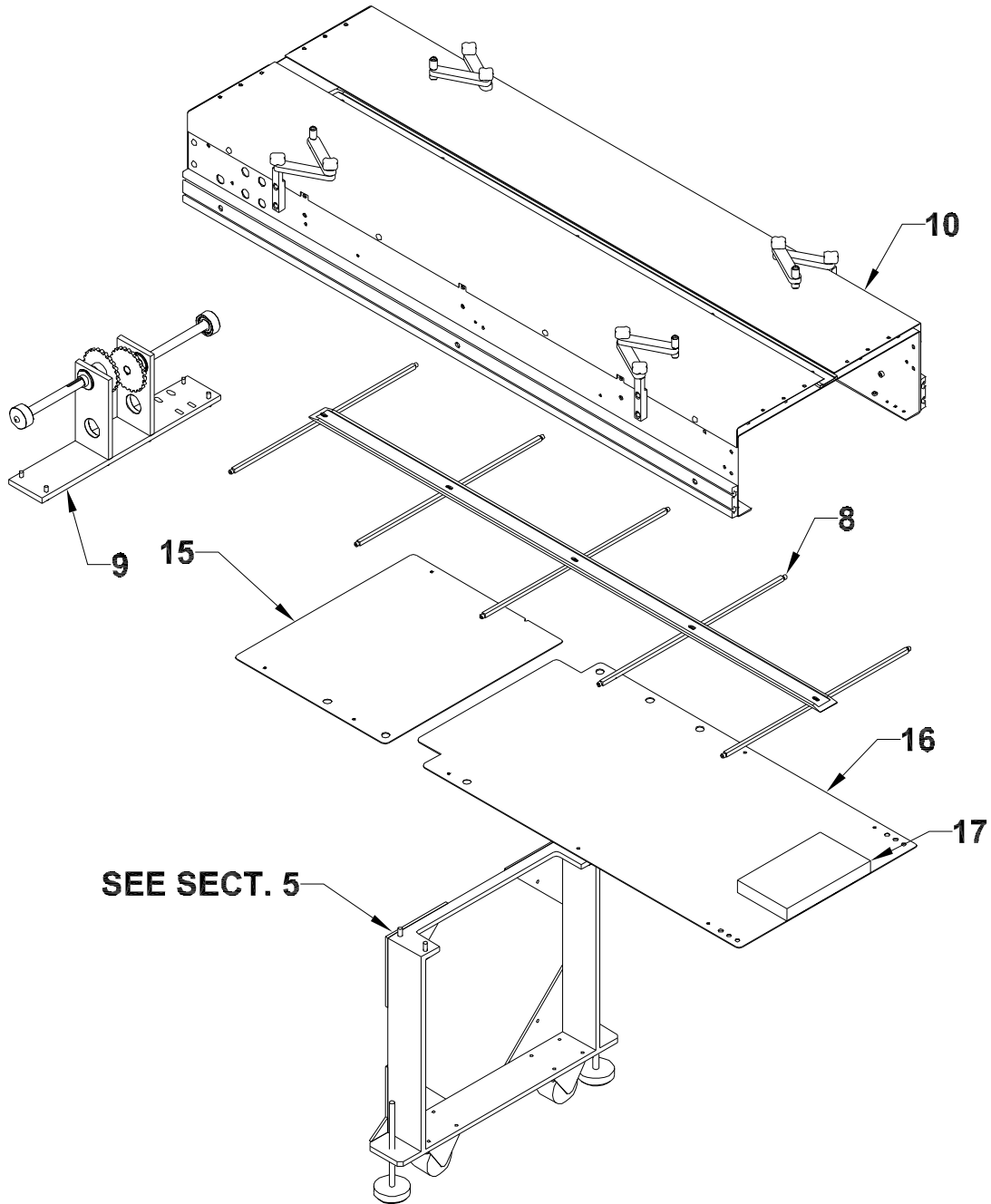
216 IN. NEEDED FOR EACH MIDDLE SECTION. (OPTIONAL)

15 IN. NEEDED FOR MOTOR CHAIN.

9 IN. NEEDED FOR EACH DRIVE CHAIN

7: CHAIN 51390110

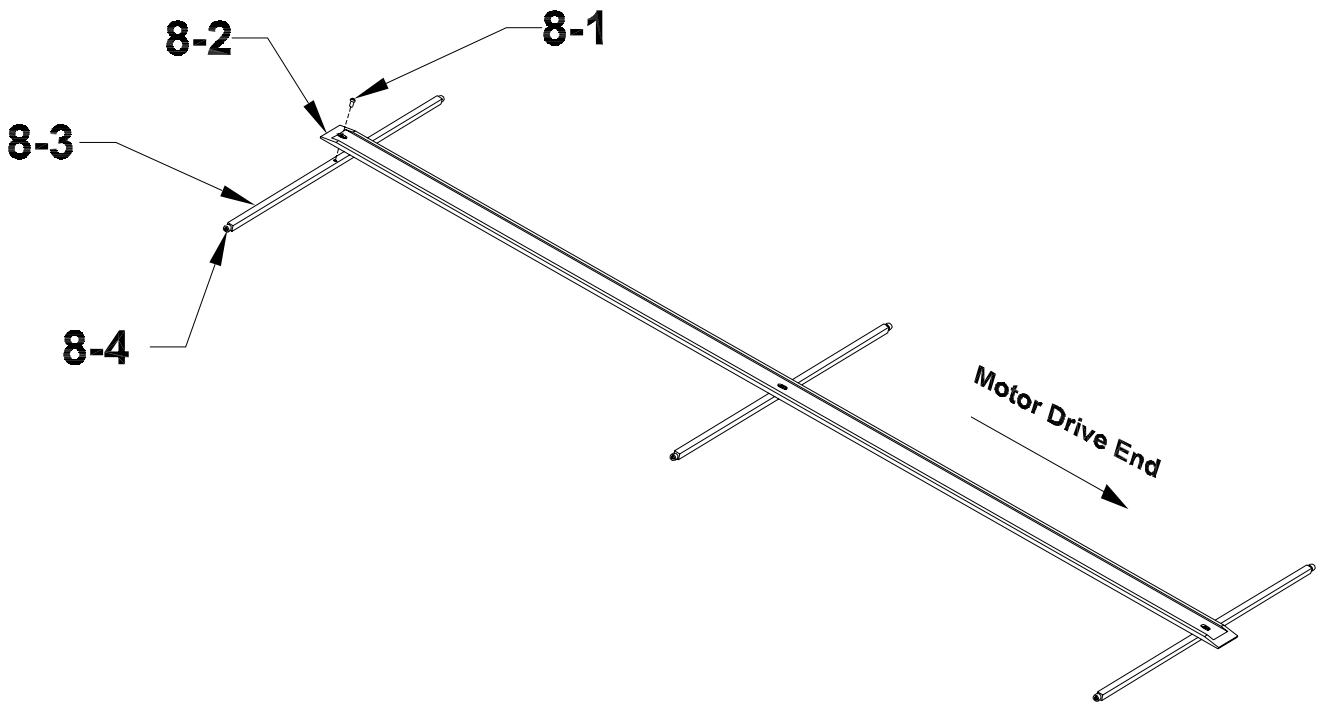
Idler End Conveyor Assembly
Assembly: 14581114



Idler End Conveyor Assembly
Assembly: 14581114

Diagram Number	Qty	Description	Part Number
8	1	Chain Guide Assembly, Idler End	14581111
9	1	Idler Gear Carriage Assembly	14581113
10	1	Conveyor Base, Idler End	14581112
15	1	Idler End Small Bottom Plate	51458143
	4	BHCS, 1/4-20 x 1/2	00002350
16	1	Idler End Bottom Plate	51458142
	6	BHCS, 1/4-20 x 1/2	00002350
17	1	Convuluted Foam (cut to fit)	51458149

8: Chain Guide Assembly, Idler Section
Assembly: 14581111

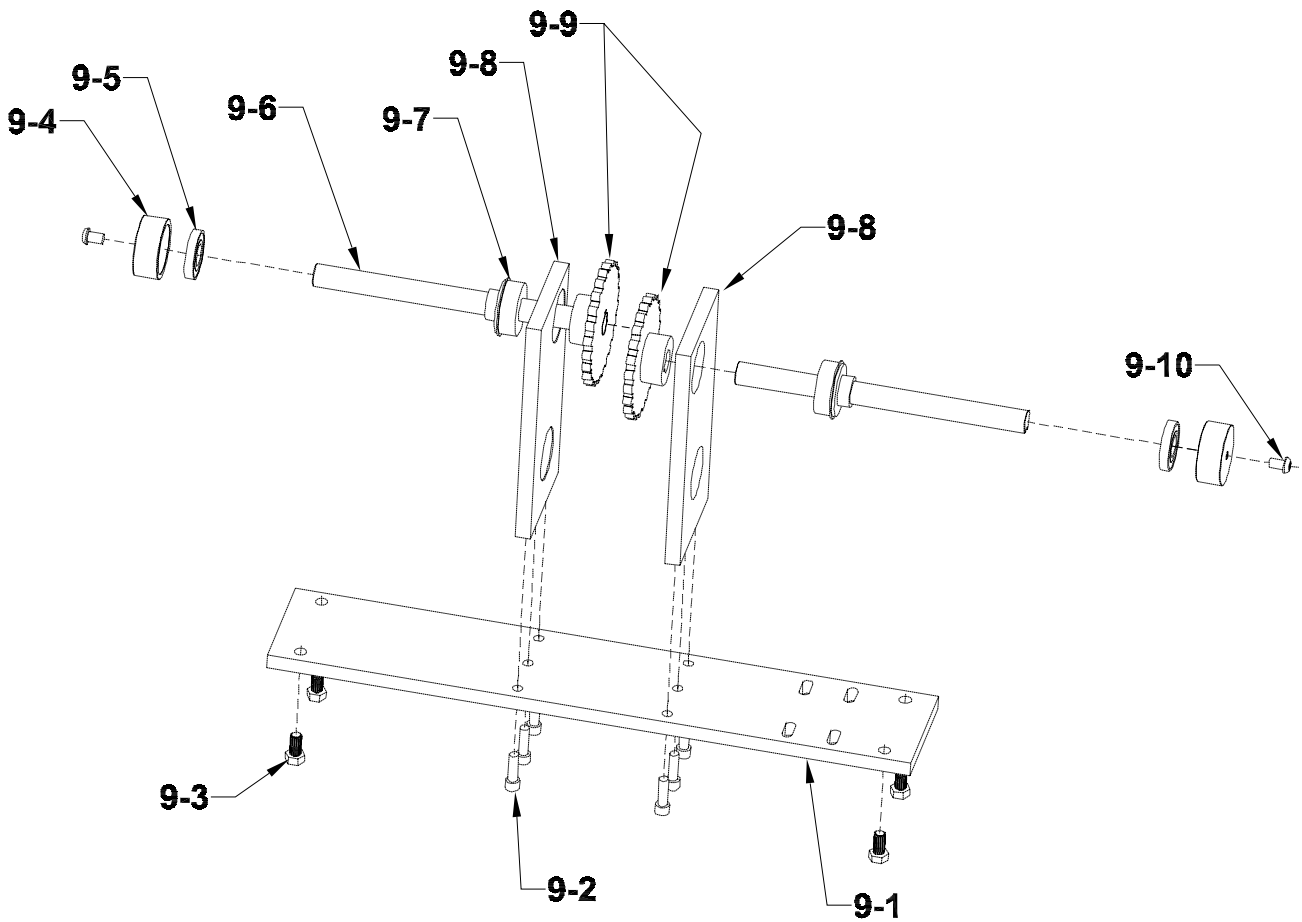
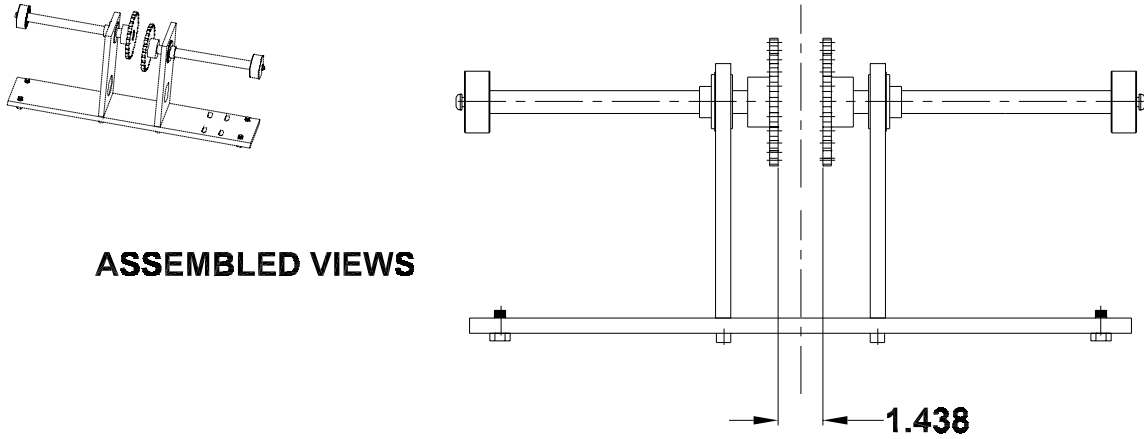


8: Chain Guide Assembly, Idler Section
Assembly: 14581111

Diagram Number	Qty	Description	Part Number
8-1	3	BHCS, 8-32 UNC x 3/8	00002306
8-2	1	Bottom Chain Guide	51458041
8-3	3	Bottom Chain Guide Mount	51458037
8-4	6	SHCS, 1/4-20 UNC x 1/2	00002360

9: Idler Gear Carriage Assembly

Assembly: 14581113

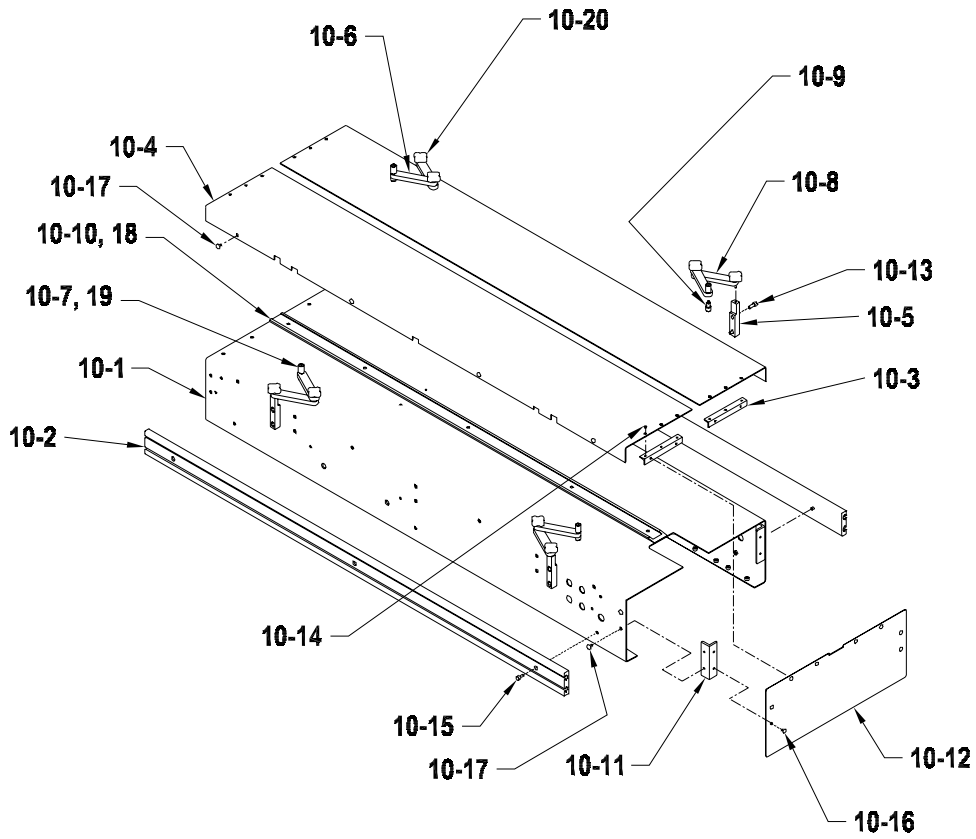
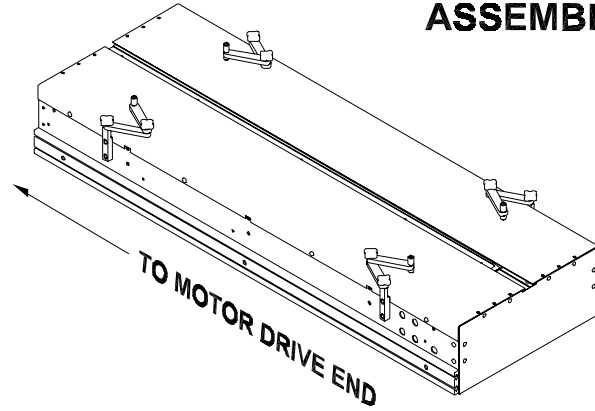


9: Idler Gear Carriage Assembly
Assembly: 14581113

Diagram Number	Qty	Description	Part Number
9-1	1	Gear Carriage Mount	51458006
9-2	6	SHCS, 5/16-18 UNC x 3/4	00002331
9-3	4	Hex HD Bolt, 3/8-16 UNC x 3/4	00003376
9-4	2	Bearing Cup	51458026
9-5	2	Bearing Gear Carriage	51458069
9-6	2	Drive Shaft	51458011
9-7	2	Bearing	51458017
9-8	2	Upright Bearing Mount	51458008
9-9	2	24T Sprocket Conveyor	51390071
9-10	2	BHCS, 5/16-18 UNC x 1/2	00003452

10: Conveyor Base Idler End
Assembly: 14581112

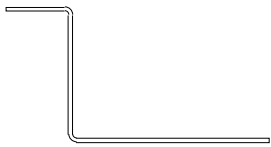
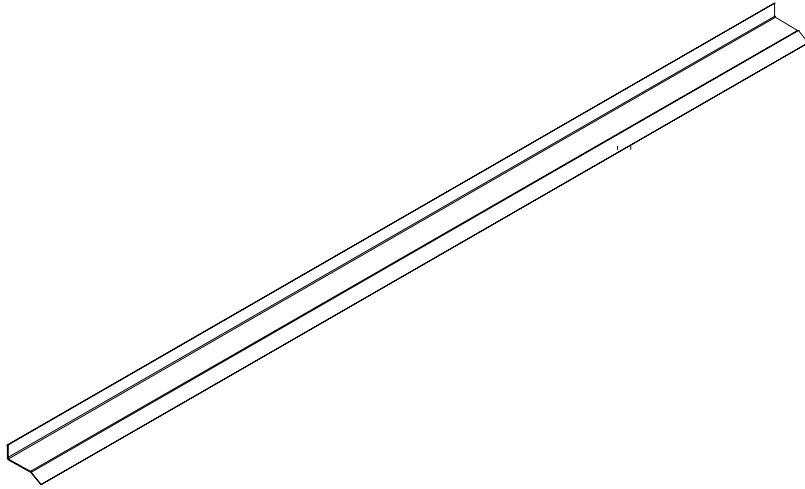
ASSEMBLED VIEW



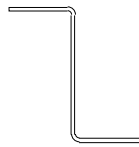
10: Conveyor Base Idler End
Assembly: 14581112

Diagram Number	Qty	Description	Part Number
10-1	1	Bottom Main Section	51458001
10-2	2	T-Channel	51458015
10-3	2	Endplate Top Bracket	51458056
10-4	2	Main Table Top	51458002
10-5	4	Side Guide Support	51390052
10-6	4	Side Guide Mounting Arm, Top	51458047
10-7	4	Side guide Mounting Stud	51458048
10-8	4	Side Guide Mounting Arm, Bottom	51458046
10-9	4	Side guide Mounting Foot	51458049
10-10	1	Chain Guide	51458028
10-11	2	Endplate Bracket	51458055
10-12	1	Endplate	51458024
10-13	8	SHCS, 5/16-18 x 3/4	00003457
10-14	6	FHCSS/S 6-32 x 3/8	00003453
10-15	6	SHCS, 5/16-18 x 1/2	00003454
10-16	4	BHCSS/S 1/4-20 x 1/4	00003391
10-17	8	BHCSS/S 5/16-18 x 3/8	00003455
10-18	5	BHCS, 8-32 x 3/8	00002306
10-19	4	BHCSS/S 10-32 x 1/2	00002834
10-20	8	Comfort Knob #10-32 x 1.00 LG	51458070

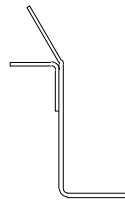
11: Material Guides



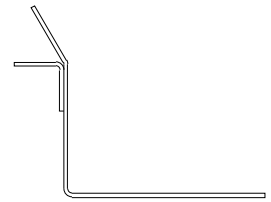
1x2x3 STRAIGHT Z



1x2x1 STRAIGHT Z



1x2x1 FLARED Z



1x2x3 FLARED Z

11: Material Guides

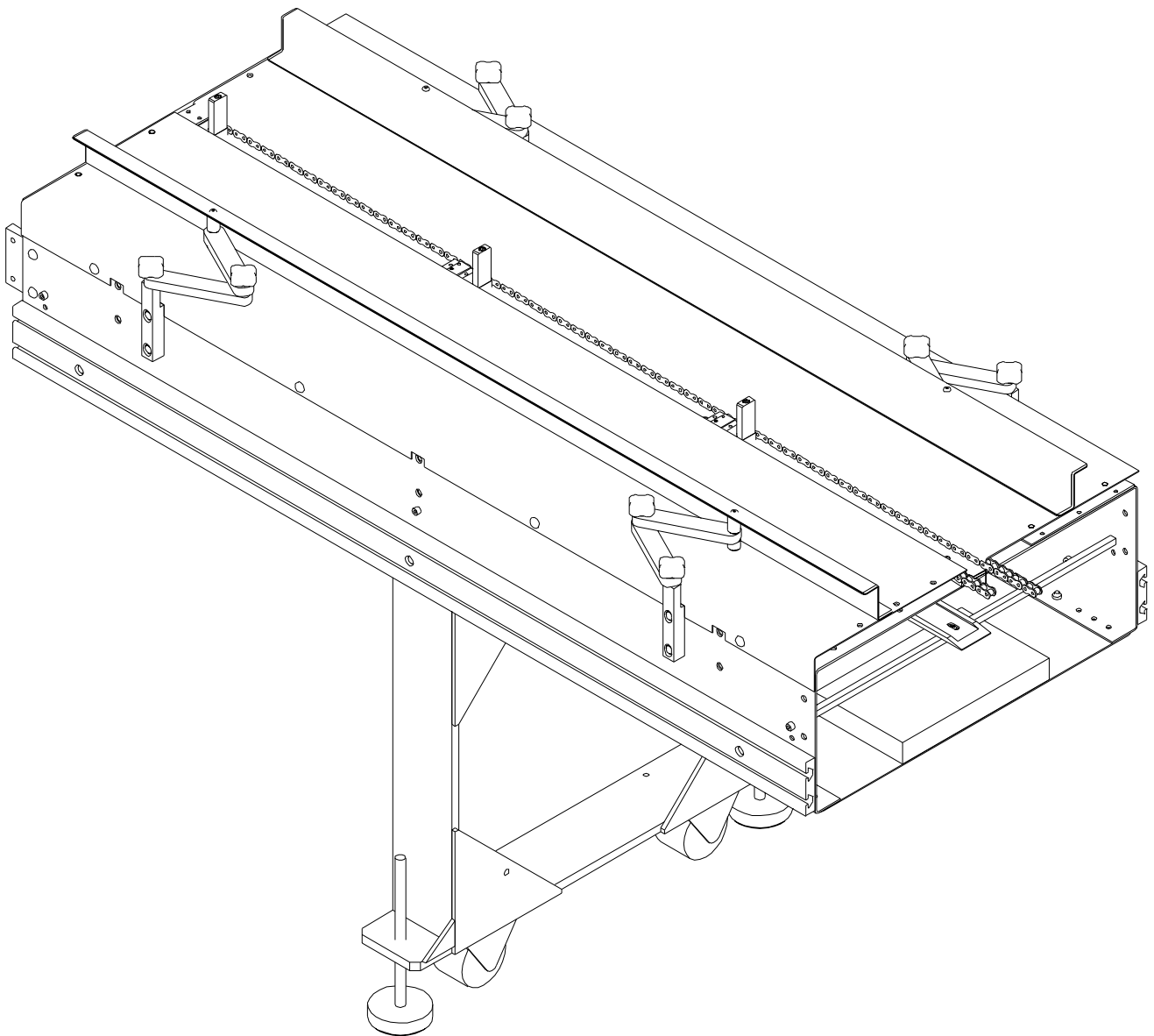
End Sections

51458025	1x2x1x66 Straight Z
51458081	1x2x3x66 Straight Z
51458087	1x2x1x66 Flared Z
51458085	1x2x3x66 Flared Z

Optional Middle Sections

51458062	1x2x1x54 Straight Z
51458080	1x2x3x54 Straight Z
51458088	1x2x1x54 Flared Z
51458086	1x2x3x54 Flared Z

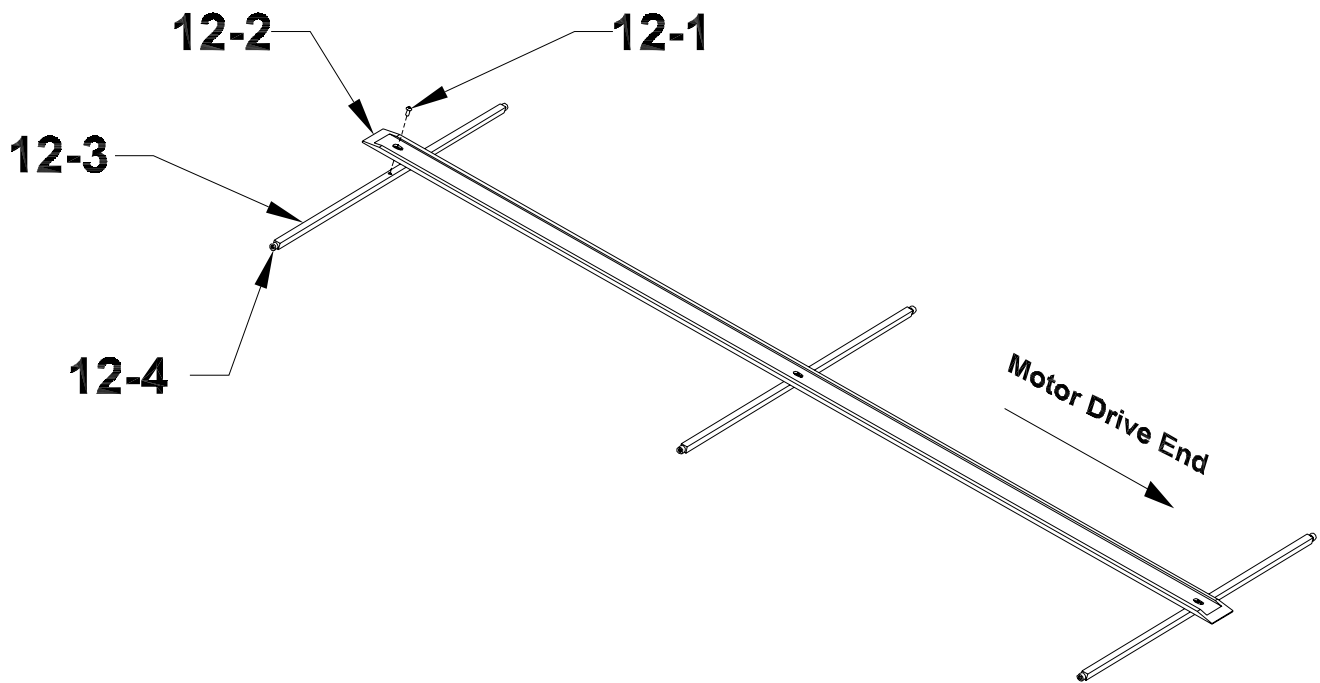
Middle Section Assembly, Optional
Assembly: 14581115



Middle Section Assembly, Optional
Assembly: 14581115

Diagram Number	Qty	Description	Part Number
12	1	Chain Guide Assembly, Middle section	14581110
13	1	Base Middle Section Conveyor Assembly	14581105
17	1	Convolutod Foam(cut to fit)	51458149
18	1	Center Bottom Plate	51458147
	4	BHCS, 1/4-20 x 1/2	00002350
19	1	Center Bottom Plate	51458148
	6	BHCS, 1/4-20 x 1/2	00002350

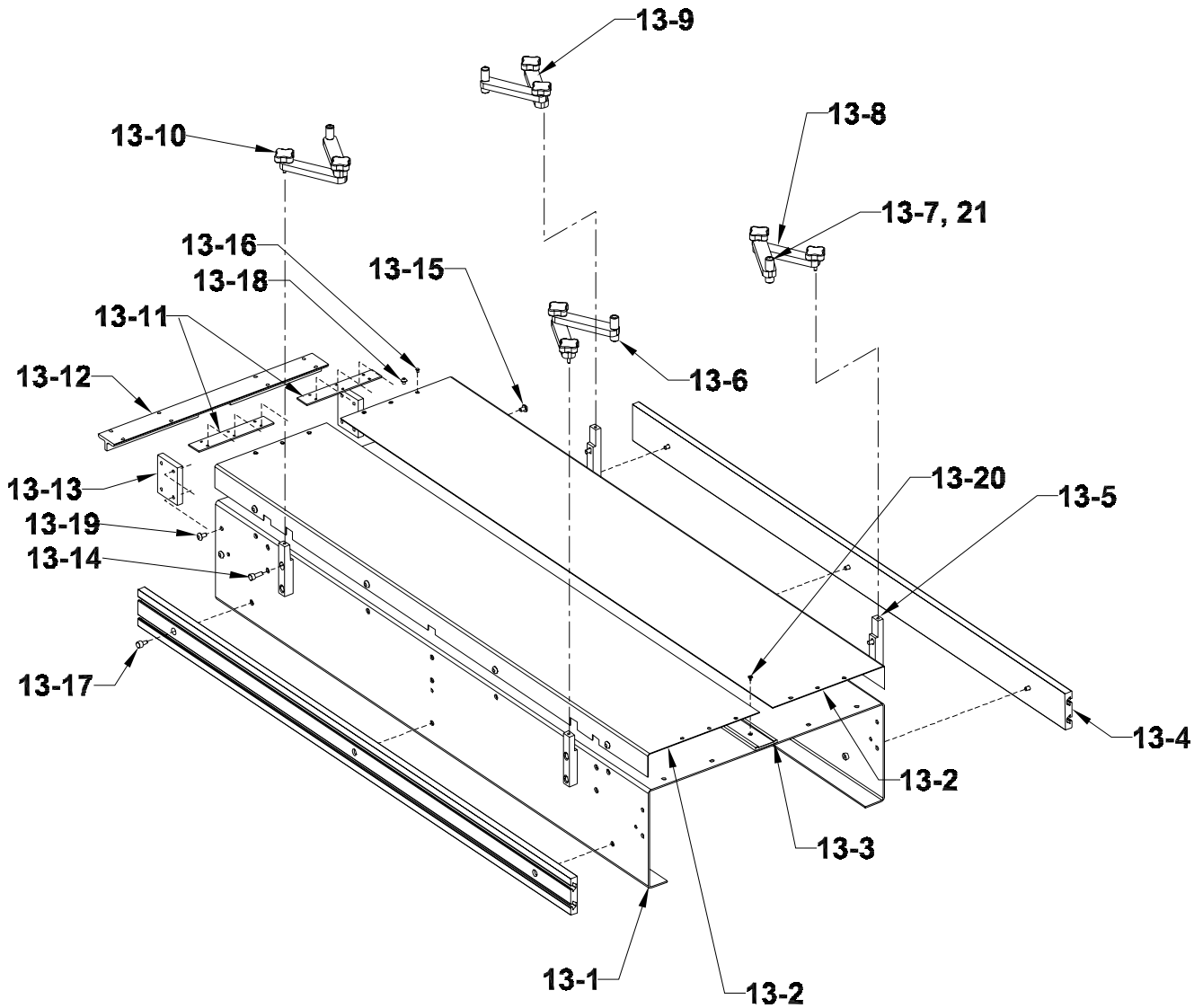
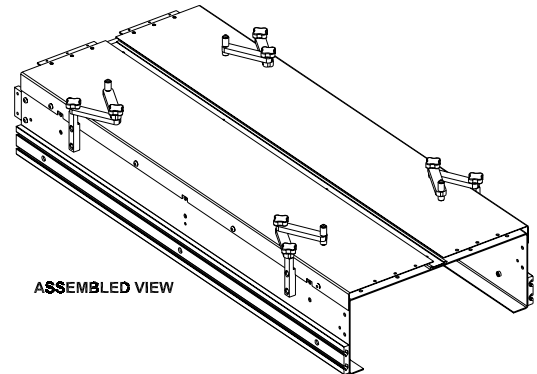
12: Chain Guide Assembly, Middle Section
Assembly: 14581105



12: Chain Guide Assembly, Middle Section
Assembly: 14581105

Diagram Number	Qty	Description	Part Number
12-1	3	BHCS, 8-32 UNC X 3/8	00002306
12-2	1	Bottom Chain Guide	51458040
12-3	3	Bottom Chain Guide Mount	51458037
12-4	6	SHCS, 1/4-20 UNC x 1/2	00002360

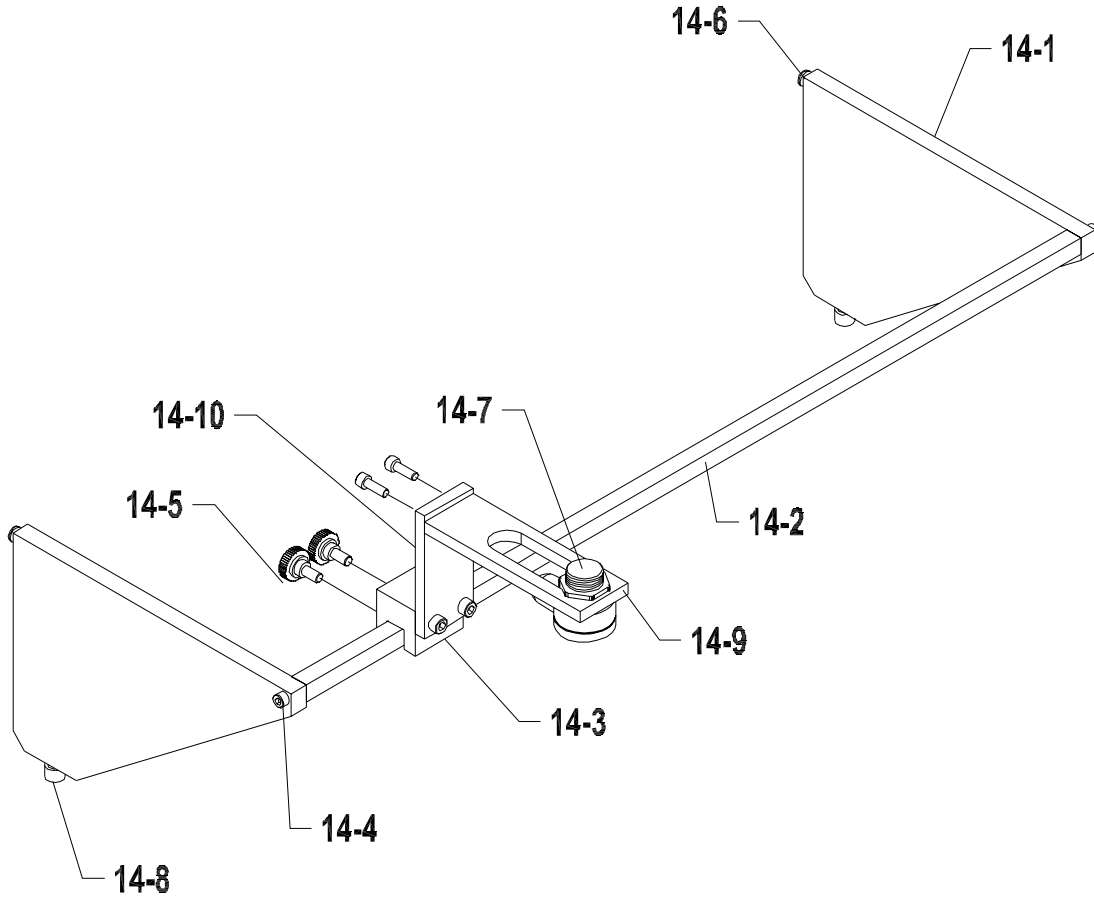
13: Base Middle Section Conveyor Assembly
Assembly: 14581110



13: Base Middle Section Conveyor Assembly
Assembly: 14581110

Diagram Number	Qty	Description	Part Number
13-1	1	Bottom, Middle Section	51458023
13-2	2	Top, Middle section	51458034
13-3	1	Chain Guide	51458033
13-4	2	T-Channel	51458032
13-5	4	Side Guide Support	51390052
13-6	4	Side guide Mounting Foot	51458049
13-7	4	Side Guide Mounting Stud	51458048
13-8	4	Side Guide Mounting Arm, Bottom	51458046
13-9	4	Side Guide Mounting Arm, Top	51458047
13-10	8	Comfort Knob #10-32 x 1.00	51458070
13-11	2	Top Locking Bracket	51458003
13-12	1	Bottom Locking Bracket	51458005
13-13	2	Side Locking Bracket	51458004
13-14	8	SHCS, 5/16-18 x 3/4	00003457
13-15	8	BHCSS/S 5/16-18 x 3/8	00003455
13-16	4	FHCSS/S 6-32 x 3/8	00003453
13-17	6	SHCS, 5/16-18 x 1/2	00003454
13-18	4	BHCSS/S 1/4-20 x 1/4	00003391
13-19	4	BHCS, 5/16-18 x 1/2	00003456
13-20	4	BHCS, 8-32 x 3/8	00002306
13-21	4	BHCS 10-32 x 1/2	00002834

14: Flight Sensor Assembly
Assembly: 14581147

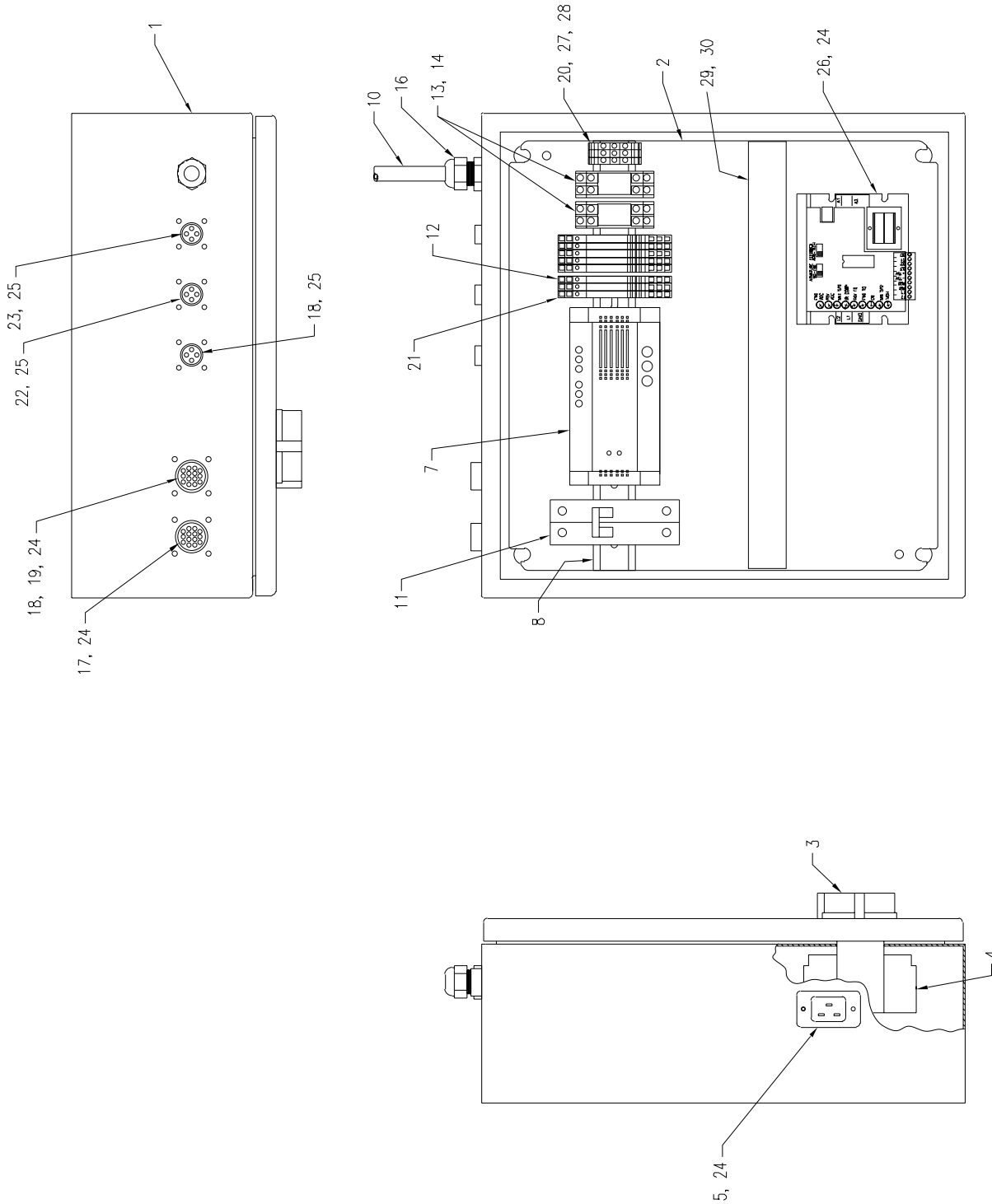


14: Flight Sensor Assembly
Assembly: 14581147

Diagram Number	Qty	Description	Part Number
14-1	2	Sensor Mount	51458133
14-2	1	Flight Sensor Slidebar	51458083
14-3	1	Flight Sensor Mounting Block	51458084
	1	Sensor Bracket	44846052
14-4	2	SHCS, 8-32 x 5/8	00002215
14-5	2	SHCS, 10-32 x 1/2	00002315
	2	Knob, 5/8 Diameter	23500091
14-6	2	BHCS, 1/4-20 X 1/2	00002350
14-7	1	Sensor Assembly	14581153
14-8	2	SHCS, 1/4-20 x 1/2	00002360
14-9	1	Sensor Base	51458153
	2	SHCS, 8-32 x 1/2	00002208
14-10	1	Sensor Mount	51458152
	2	SHCS, 10-32 x 1/2	00002315

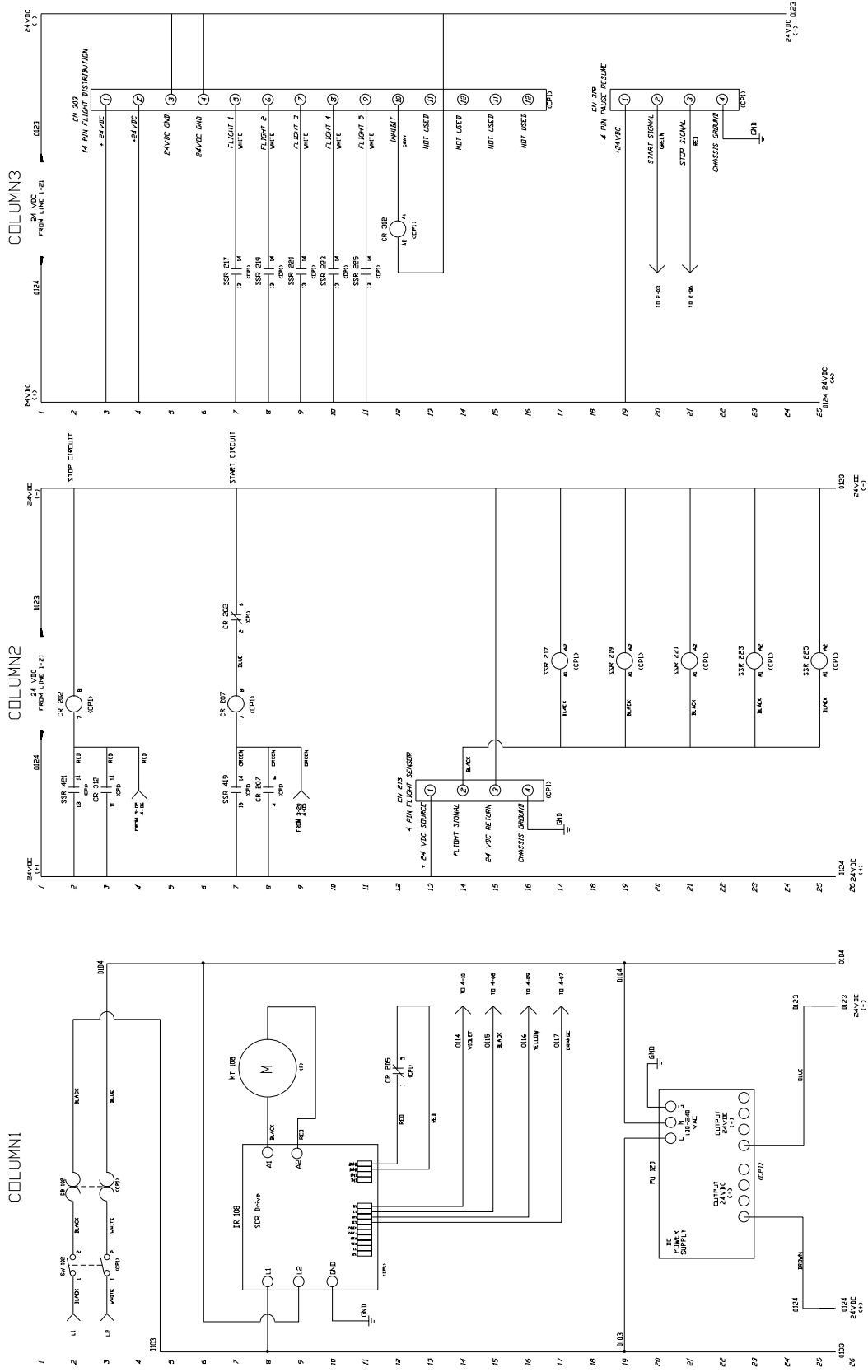
4 Electrical Components

For "stand-alone" systems not requiring StreamNet or FeedNet

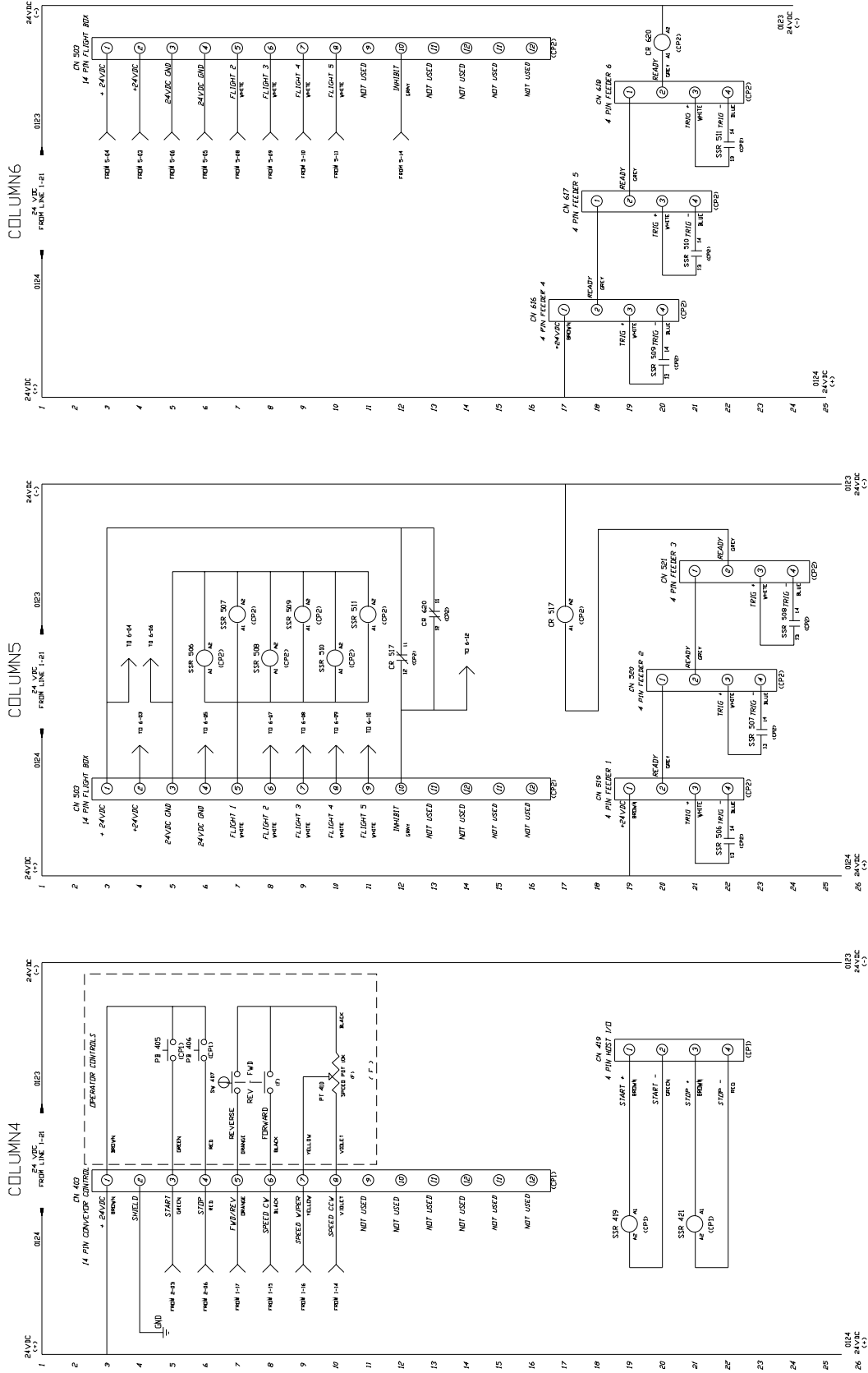


Electrical Assembly*
Assembly: 14581124

Diagram Number	Qty	Description	Part Number
1	1	Electrical Enclosure	51458045
2	1	Sub-Panel	51458066
3	1	Disconnect Switch Handle	44946017
4	1	Disconnect Switch	44946016
5	1	Inlet C20	53500285
6	1	Power Cord (Not Shown)	53500286
7	1	Power Supply 100 Watt	51208121
8	1	DIN Rail	51390049
9	1	Receptacle- 3 Pin (Not Shown)	53500384
10	24"	Cord- 3 Wire	53500592
11	1	Breaker- 10A	53500565
12	7	Solid State Relay	51241006
13	2	Relay, DPDT 24VDC K10p	53500451
14	2	Relay Base	53500454
15	1	Plug- 110 VAC	53500026
16	1	Cord Grip	53500217
17	1	Harness, Flight Fault	14581118
18	1	Harness, Operator Controls	14581119
19	1	Harness, Control Panel	14581123
20	3	Terminal Block	53500153
21	1	Relay- Form C	51241005
22	1	Harness, Pause/Resume	14581121
23	1	Harness, Flight Sensor	14581122
24	14	BHCS, 8-32 x 3/8	00002306
25	12	BHCS, 6-32 x 3/8	00003314
26	1	DC Motor Drive	51050252
27	1	Terminal Block End Plate	53500155
28	1	Terminal Blocks Anchors	53500156
29	1	Wire Duct	51327036
30	1	Wire Duct Cover	51327037
N/S	1	Potentiometer Operator	51458074
N/S	1	Stop Button	51241012
N/S	1	Start Button	53500519
N/S	1	2 Position Switch (Optional)	53500522
N/S	3	Contact Block NO	53500523
N/S	1	Contact Block NC	53500520

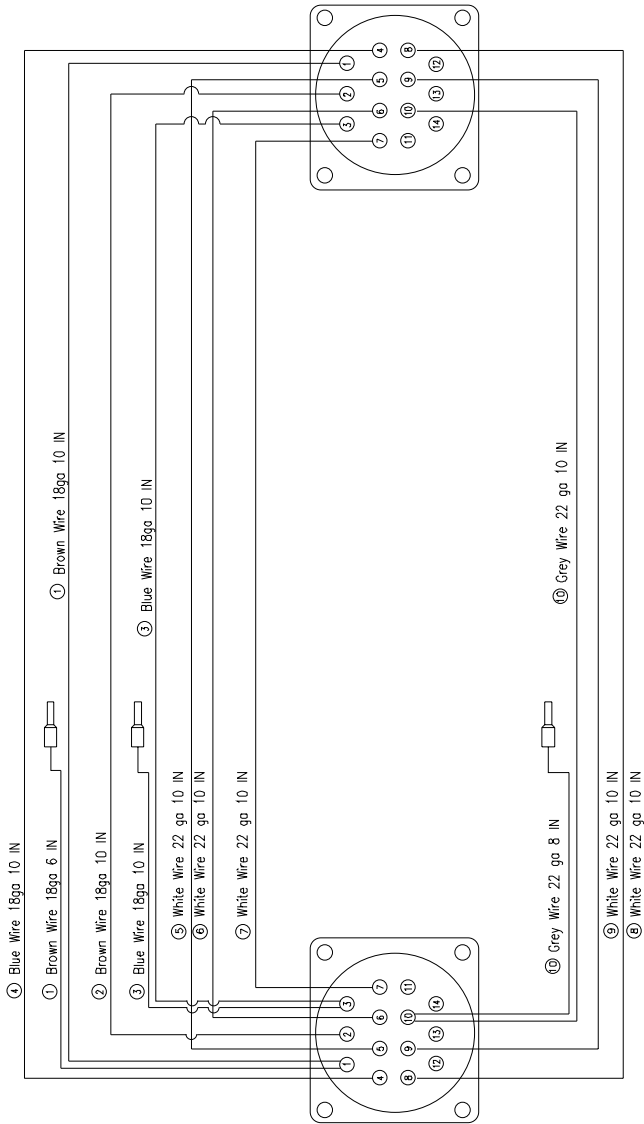


FLIGHTED CONVEYOR ELECTRICAL SCHEMATIC #51458067



FLIGHTED CONVEYOR ELECTRICAL SCHEMATIC #51458067

Harness, Flight Fault Pass Through*

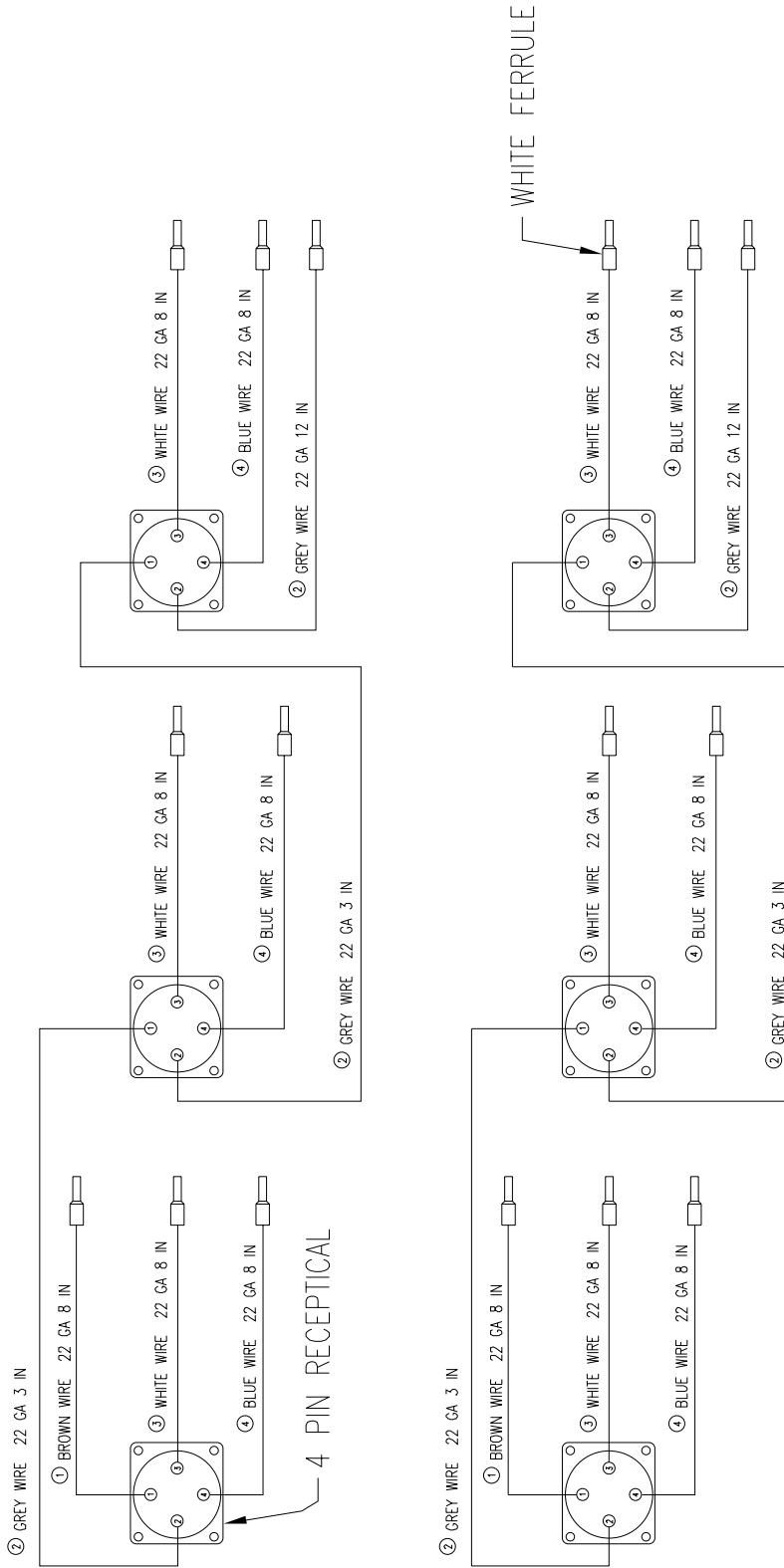


ASSEMBLY INSTRUCTIONS:

1. CUT 1 EA 6 IN & 3 EA 10 IN BLUE WIRE.
2. CUT ONE EA 6 IN & 2 EA 10 IN BROWN WIRE.
3. CUT 1 EA 8 IN & 10 IN GREY WIRE.
4. CUT FIVE 10 IN WHITE WIRES.
5. CRIMP FEMALE PINS ON ALL WIRES.
6. INSTALL WIRES INTO CONNECTORS AS SHOWN.
7. INSTALL WHITE FERRULES AS SHOWN.

Parts List			
Item #	Part #	Qty	Description
1	44649027	2	14 PIN CONNECTOR
2	53500503	23	FEMALE PINS
3	53500235	3	WHITE FERRULES
4	53500056	26 IN	BROWN WIRE, 18 GA
5	53500055	30 IN	BLUE WIRE, 18 GA
6	53500113	50 IN	WHITE WIRE, 22 GA
7	53500113	18 IN	WHITE WIRE, 22 GA

Harness, Flight Feeder Connection*



ASSEMBLY INSTRUCTIONS:

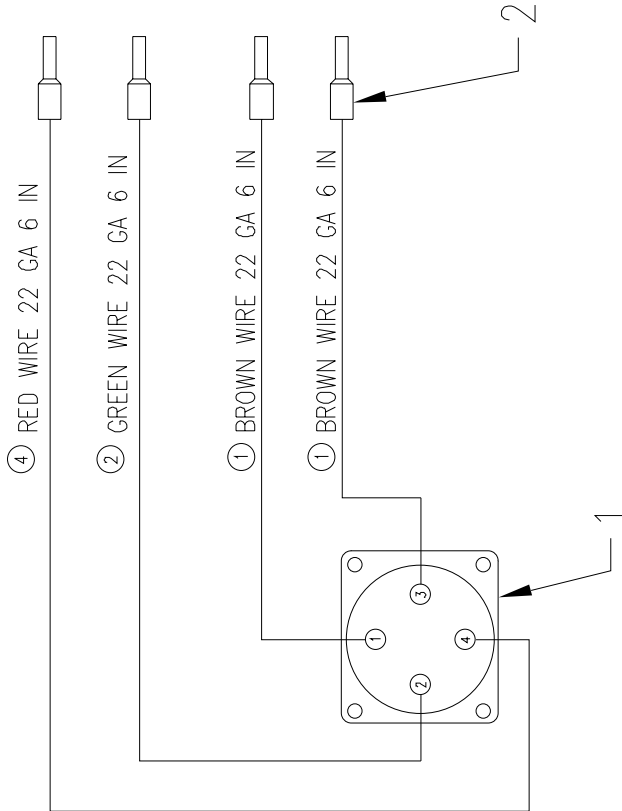
1. CUT 4 EA 3 IN & 1 EA 12 IN GREY WIRE.
2. CUT 2 EA 8 IN BROWN WIRE.
3. CUT 6 EA 8 IN WHITE & BLUE WIRE.
4. CRIMP FEMALE PINS TO ALL WIRES.
5. INSTALL INTO FOUR PIN RECEPTICALS AS SHOWN.
6. INSTALL WHITE FERRULES ON WIRES AS SHOWN.

Parts List	
Item #	Port # Qty Description
1	53500505 6 4 PIN RECEPTICAL
2	53500235 16 WHITE FERRULES
3	53500213 16 IN BROWN WIRE, 22 GA
4	53500113 24 IN WHITE WIRE, 22 GA
5	53500114 24 IN BLUE WIRE, 22 GA
6	53500123 24 IN GREY WIRE, 22 GA
7	53500503 24 FEMALE PINS

Harness, Remote Start/Stop*

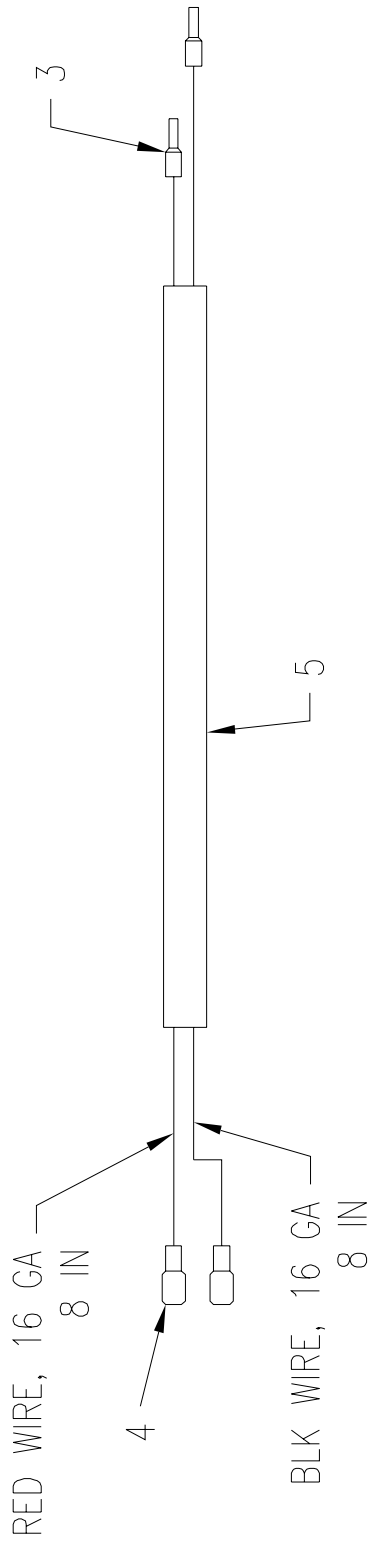
ASSEMBLY INSTRUCTIONS:

1. CUT BROWN INTO 6 IN LENGTHS.
2. CRIMP FEMALE PINS ON ALL WIRES.
3. INSERT INTO 4 PIN RECEPTICAL AS SHOWN.
4. SLIDE 1VARFLEX OVER WIRES.
5. INSTALL WHT FERRULES ON WIRES WIRES.



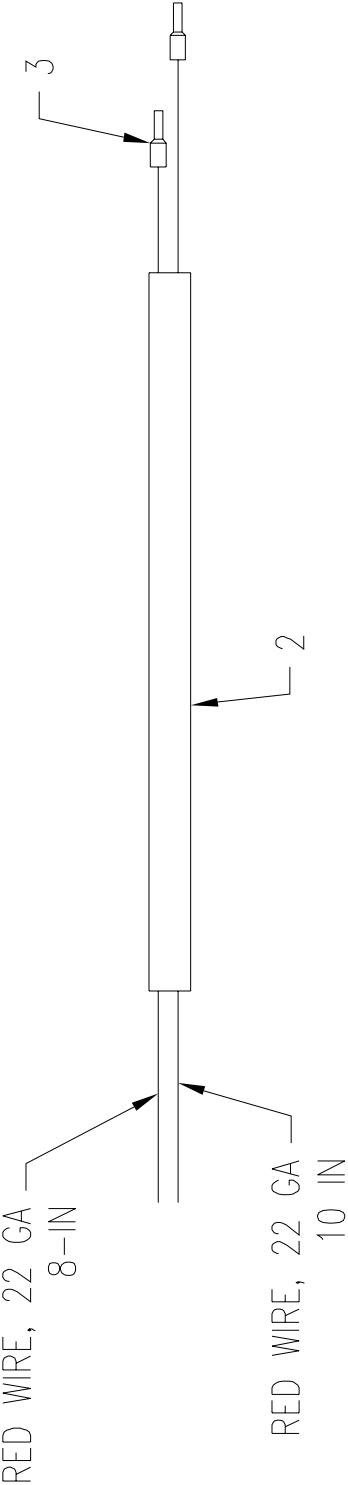
Parts List			
Item #	Part #	Qty	Description
1	53500505	1	4 PIN RECEPTICAL
2	53500235	4	WHITE FERRULES
3	53500213	12 IN	BROWN WIRE, 22 GA
4	53500112	6 IN	RED WIRE, 22 GA
5	53500	6 IN	GREEN WIRE, 22 GA
6	44649087	4 IN	VARFLEX
7	53500503	4	FEMALE PINS

Harness, Motor Power*



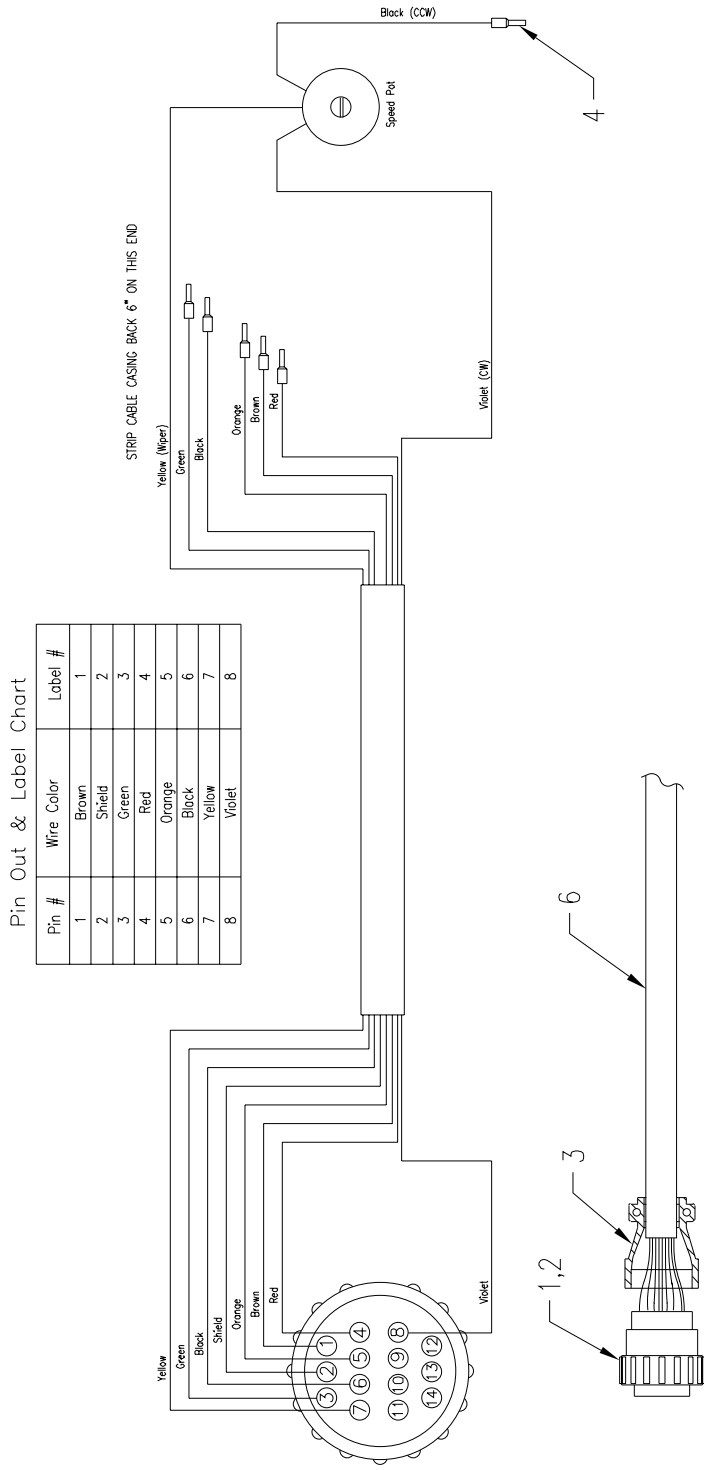
Parts List				
Item #	Part #	Qty	Description	
1	53500064	8 IN	RED WIRE, 16 GA	
2	53500061	8 IN	BLACK WIRE, 16 GA	
3	53500235	2	RED FERRULES	
4	53500045	2	RED CONNECTORS	
5	44649087	2	VARFLEX	

Harness, Inhibit Circuit*



Parts List			
Item #	Part #	Qty	Description
1	53500235	18 IN	RED WIRE, 22 GA
2	44649089	6 IN	VARFLEX
3	53500235	2	WHITE FERRULES

Harness, Control Panel*



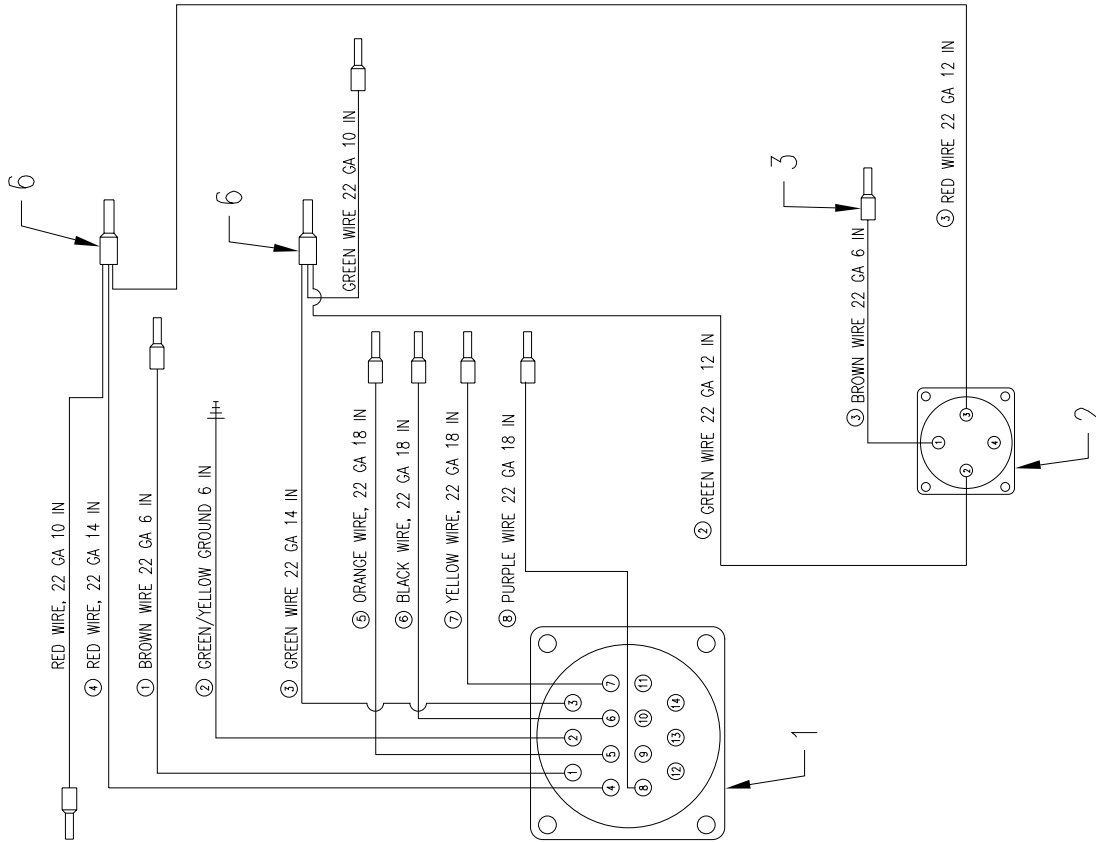
Parts List

Item #	Part #	Qty	Description
1	44649028	1	14 PIN CONNECTOR
2	53500502	8	MALE CRIMP PINS
3	44649029	1	CONNECTOR SHELL
4	53500235	5	WHITE FERRULES
5		1	1-5 WIRE LABELS
6	53500127	.36"	CABLE
7			
8			

Harness, Control Box*

ASSEMBLY INSTRUCTIONS:

1. CUT 1 EA 10 IN, 12 IN, 14 IN RED WIRE.
2. CUT 1 EA 10 IN, 12 IN, 14 IN GREEN WIRE.
3. CUT 2 EACH SIX INCH BROWN WIRE.
4. CRIMP FEMALE PINS ON ALL WIRES.
5. INSERT INTO 14 PIN RECEPTAL AS SHOWN.
6. CUT 1 16 IN & 2 12 IN VARFLEX SHEATHES.
7. SLIDE 12 IN VARFLEX OVER RED/GREEN WIRES FROM 14 PIN RECEPTAL.
8. SLIDE 16 IN VARFLEX OVER ORG., BLK, YEL, PUR WIRES.
9. INSERT WIRE INTO 4 PIN RECEPTAL AS SHOWN
10. SLIDE 12 IN VARFLEX OVER RED/GREEN WIRES FROM 4 PIN RECEPTAL.
11. INSTALL RED FERRULES ON GREEN WIRES.
12. INSTALL RED FERRULES ON RED WIRES.
13. INSTALL WHT FERRULES ON REMAINING WIRES.

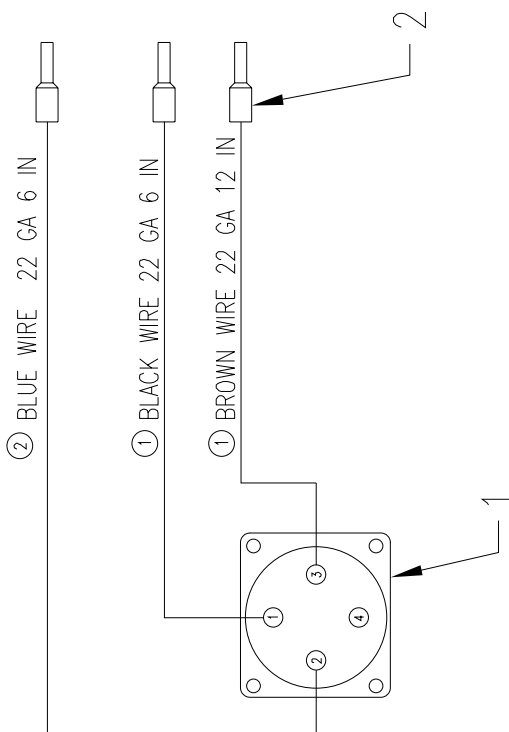


Parts List			
Item #	Part #	Qty	Description
1	44649027	1	14 PIN RECEPTAL
2	53500505	1	4 PIN RECEPTAL
3	53500235	8	WHITE FERRULES
4	44649087	40 IN	VARFLEX
5	53500503	11	FEMALE PINS
6	53500237	2	RED FERRULE
7	53500213	10 IN	BROWN WIRE, 22 GA
8	53500057	6 IN	GREEN/YELLOW, 18 GA
9		36 IN	GREEN WIRE, 22 GA
10	53500112	18 IN	ORANGE WIRE, 22 GA
11	53500111	18 IN	BLACK WIRE, 22 GA
12	53500211	18 IN	YELLOW WIRE, 22 GA
13	53500214	18 IN	PURPLE WIRE, 22 GA

Harness, Flight Sensor*

ASSEMBLY INSTRUCTIONS:

1. CUT BROWN INTO 6 IN LENGTHS.
2. CRIMP FEMALE PINS ON ALL WIRES.
3. INSERT INTO 4 PIN RECEPTICAL AS SHOWN.
- 4.5. INSTALL WHT FERRULES ON WIRES WIRES.

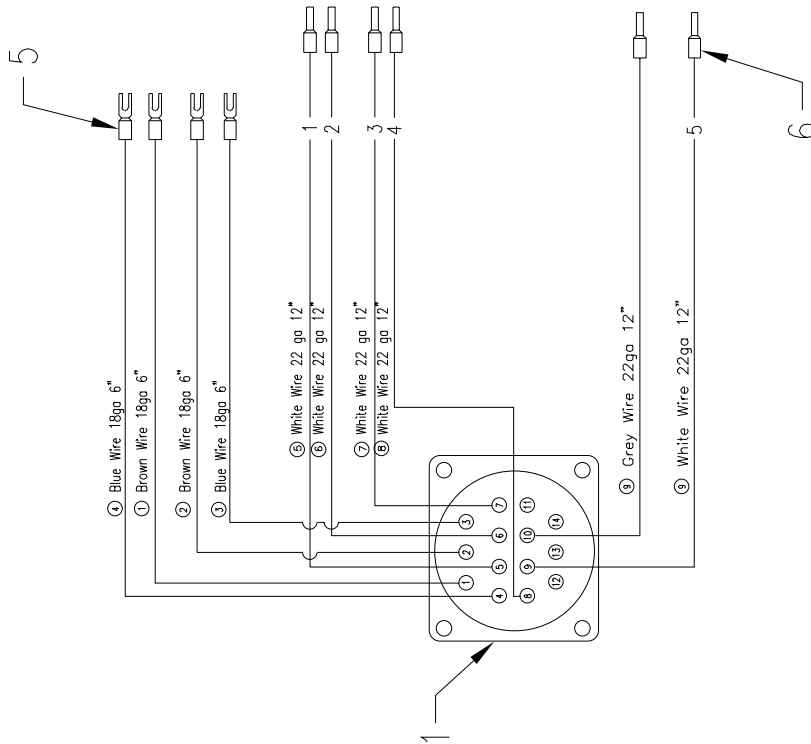


Parts List			
Item #	Part #	Qty	Description
1	53500505	1	4 PIN RECEPTICAL
2	53500235	3	WHITE FERRULES
3	53500213	12 IN	BROWN WIRE, 22 GA
4	53500111	6 IN	BLACK WIRE, 22 GA
5	53500114	6 IN	BLUE WIRE, 22 GA
6	53500503	4	FEMALE PINS

Harness, Flight Fault*

ASSEMBLY INSTRUCTIONS:

1. CUT 5 SIX INCHES LENGTHS WHITE WIRE.
2. CUT 2 EACH SIX INCH LENGTH BLUE & BROWN WIRE.
3. CRIMP FEMALE PINS ON ALL WIRES.
4. INSTALL IN CONNECTOR SHOWN.
5. SLIDE 44649085 VARFLEX OVER BROWN AND BLUE WIRES. LABELS ENDS OF WHITE WIRES AS SHOWN IN TABLE.
6. SLIDE 44649085 VARFLEX OVER WHITE WIRES.
7. INSTALL TERMINAL FORKS ON BROWN & BLUE WIRES.
8. INSTALL WHITE FERRULES ON WHITE WIRES.
9. INSTALL WHITE FERRULES ON WHITE WIRES.



Parts List			
Item #	Part #	Qty	Description
1	44649027	1	14 PIN CONNECTOR
2	53500503	8	FEMALE PINS
3	44649085	4 IN	VARFLEX
4	44649087	10 IN	VARFLEX
5	53500047	4	TERMINAL FORKS
6	53500235	5	WHITE FERRULES
7		1	1-5 WIRE LABELS
8	53500055	12 IN	BLUE WIRE, 18 GA
9	53500113	70 IN	WHITE WIRE, 22 GA
10	53500055	12 IN	BROWN WIRE, 18 GA
11	53500125	12 IN	GREY WIRE, 22 GA

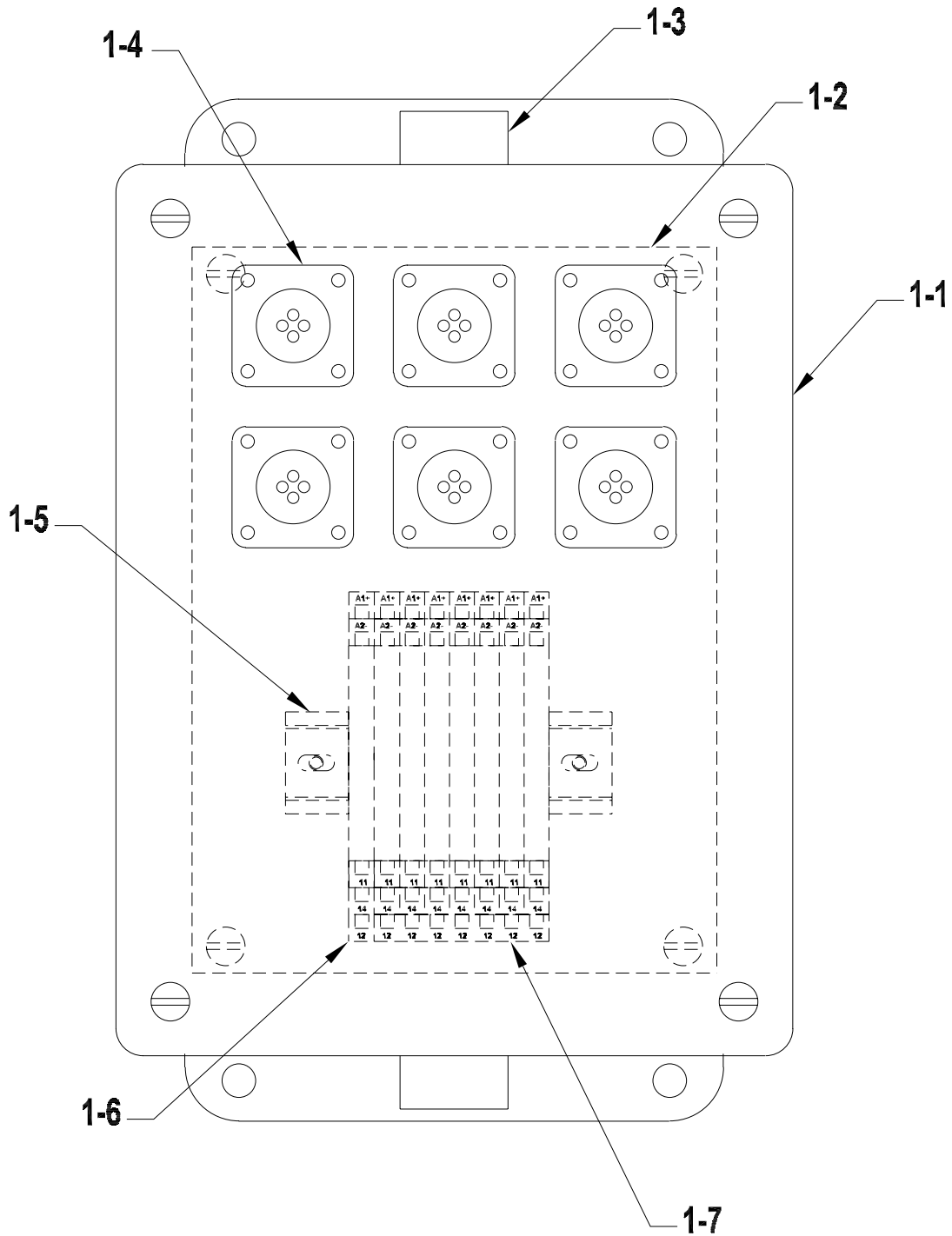
Pin Out & Label Chart

Pin #	Wire Color	Label #
4	White	1
5	White	2
6	White	3
7	White	4
8	White	5

5 Optional Components

Flight/Fault Distribution Box Assembly, (Optional)

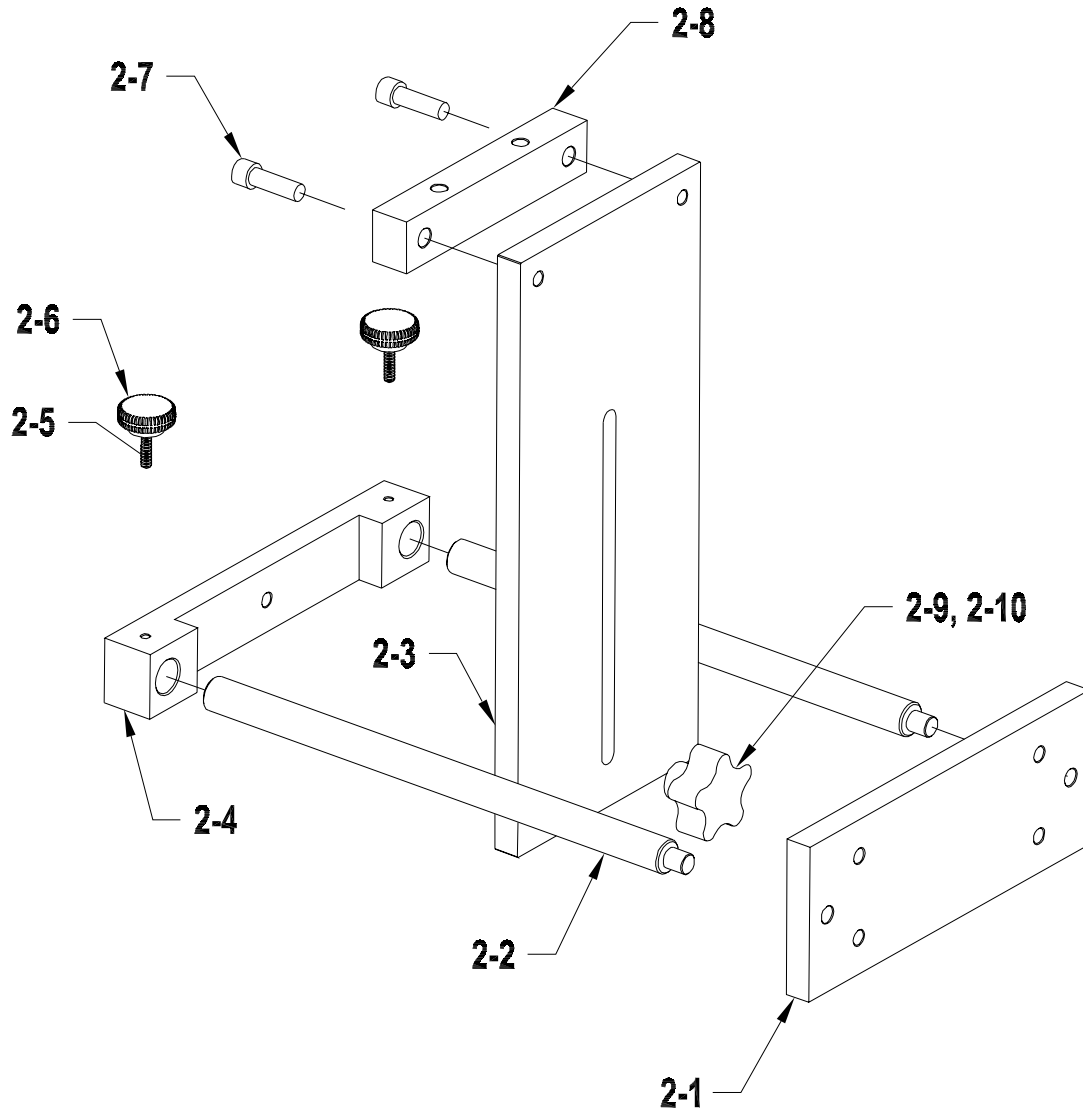
Assembly: 14581120



Flight/Fault Distribution Box Assembly, (Optional)
Assembly: 14581120

Diagram Number	Qty	Description	Part Number
1-1	1	Electrical Enclosure	51458071
1-2	1	Sub-Panel	51458072
1-3	2	Receptacle- 14 Pin	44649027
1-4	6	Receptacle- 4 Pin	53500505
1-5	2	DIN Rail	53500154
1-6	6	Solid State Relay	51241006
1-7	2	Relay-Form C	51241005
N/S	1	Harness-Flight/Fault Box	14581118
N/S	1	Harness-Control Box to Interface Box (Optional)	13391126

Docking Bracket Assembly, Optional
Assembly: 14581117



Docking Bracket Assembly, Optional
Assembly: 14581117

Diagram Number	Qty	Description	Part Number
2-1	1	Docking Bracket Mounting Plate	51458077
2-2	2	Docking Bracket Rod	51458079
2-3	1	Docking Bracket Plate	51458075
2-4	1	Docking Bracket Slide Bar	51458078
2-5	2	Socket Set Screw, #10-32 Nylon Tip	44681020
2-6	2	Knob- #10-32 w/o screw	44681021
2-7	2	SHCS- 5/16-18 X 1.00	00002331
2-8	1	Docking Bracket Mount	51458076
2-9	1	5 Lobe Comfort Knob, 5/16-18	44947019
2-10	1.5	5/16-18 Threaded Rod	44947018

Thiele
Technologies
A Barry-Wehmler Company

Streamfeeder


103 Osborne Road • Minneapolis, MN 55432-3131 USA
TEL: 763.502.0000 • FAX: 763.502.0100
E-MAIL: service@streamfeeder.com
WEB: www.streamfeeder.com

