



90°

9-6"

5"

7-9"

Monogramming Placement Guide

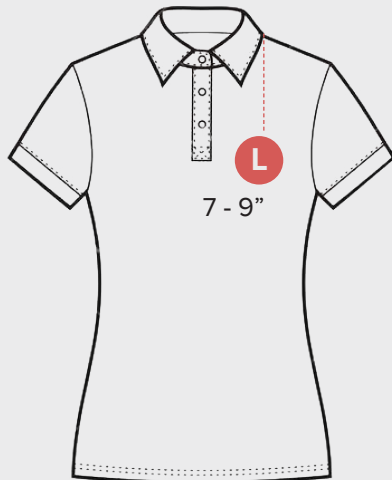
with

atch[®]





Monogram Placement *T-Shirts & Polo*



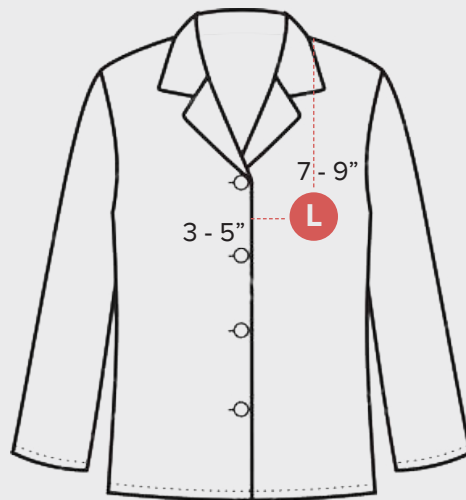
T-Shirts and Polo Tops:

7 - 9" down the left shoulder seam or 4 - 6" from the neck seam. These monograms generally are no more than 1 - 1" at the highest point. They ought to be positioned over the left chest pocket area. An alternative placement if there is a pocket on the left chest is to place on top of the pocket.



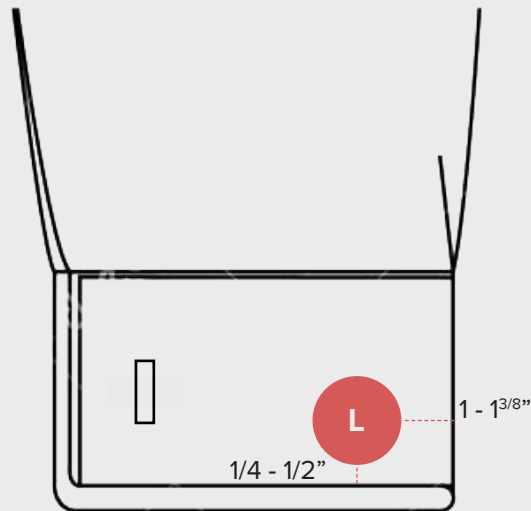
Monogram Placement

Pyjama Top, Cuffs & Jackets



Pyjama Tops;

7 - 9" down from the left shoulder seam and 3 - 5" from the vertical center. These monograms should be no more than 2" at the highest point. They are often positioned similarly to t-shirts and polo tops.



Cuffs;

Monograms should be placed on top of wrist as you are wearing it. The bottom edge of the monogram is generally 1/4" - 1/2" above the edge of the shirt. Placement should be measured from the center of the cuff 1" - 1 3/8" toward the buttonhole. (Placed on top of wrist as wearing)



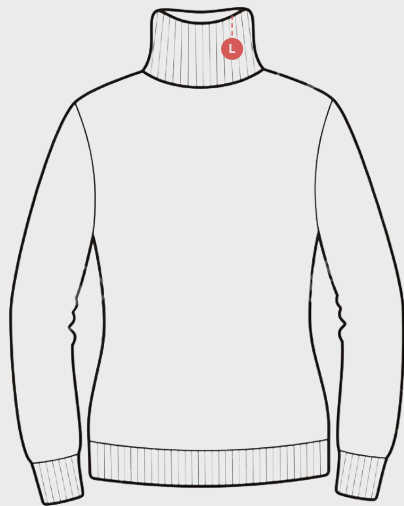
Jackets;

6 1/2 - 8" down from the center of the left shoulder seam, where the front monograms lean to the left. Monogram should be no more than 2".



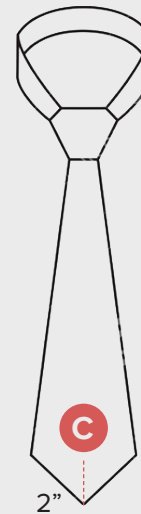
Monogram Placement

Turtlenecks, Ties & Beanies



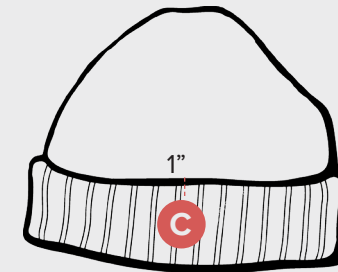
Turtlenecks;

Between center, left shoulder seam and center of the neck cuff. The monogram should be on the neck cuff and should be no more than 1" at the highest point.



Ties;

2" from bottom tip if worn without a vest. If it's worn with a vest monogram placement should be higher so it shows above the vest.



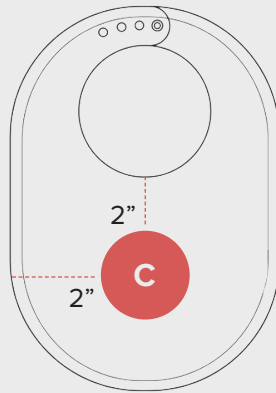
Knit Caps & Beanies;

1" down from the center of the bottom cuff (make sure to embroider the inside not the outside). These monograms should be no more than 1 1/2".



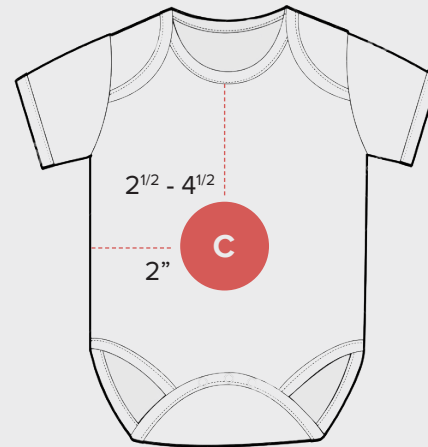
Monogram Placement

Bibs, Onesies & Hankies



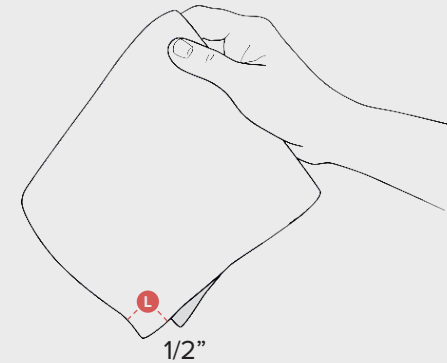
Bibs:

Centered both horizontally and vertically, in the middle of the bib. These monograms can vary in size, going all the way up to 6". These monograms are typically larger, used more as a decorative element rather than for identification purposes.



Onesies:

$2\frac{1}{2}$ " - $4\frac{1}{2}$ " down from the center of the front neck opening or $3\frac{1}{2}$ " - $4\frac{1}{2}$ " down from the center of the left shoulder seam. These monograms vary in size, going up to 6". Positioning the monogram to the left is as common as positioning it in the center. Center monograms are often bigger.

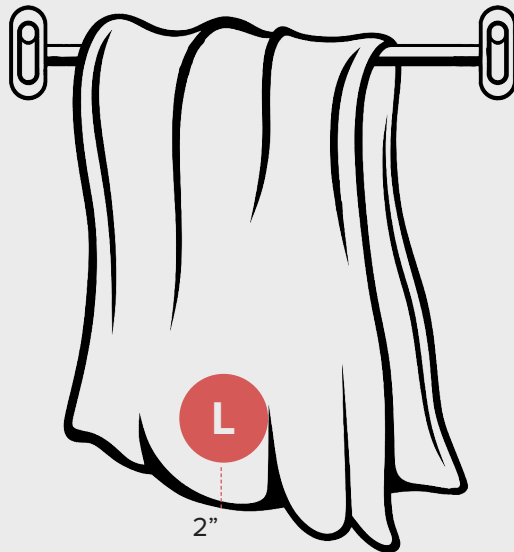


Handkerchiefs:

Bottom right hand corner with $\frac{1}{2}$ " spacing on both sides, these monograms do not have a standard size, however are often fairly small, at no larger than 1" at the highest point. Can be placed at an angle with the corner point.



Monogram Placement *Towels*



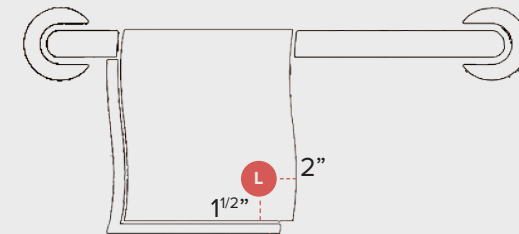
Bath Towels;

2" above the center bottom hem for towels without branding, 4" above the center bottom hem for towels with branding. These monograms are often larger in size, with some monograms going all the way up to 12". They typically placed closer to the hem than the center of towel.



Hand Towels;

1 1/2" - 2" above border or band. 2" above the hem if there is no border. You can monogram at the right edge or centered from edge to edge. Typically letter sizes are 1 1/2" - 2".



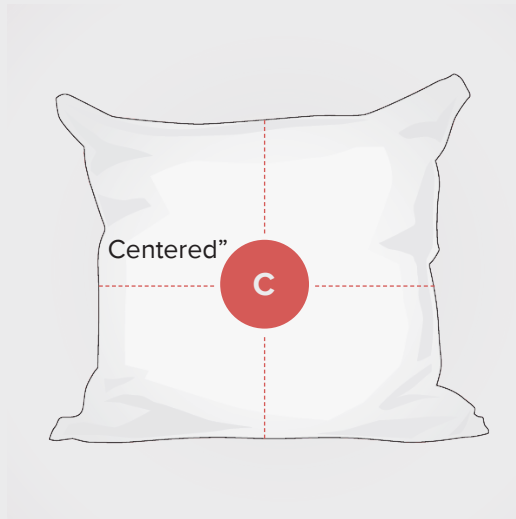
Wash Towels;

1 1/2" above border or band. 1" - 1 1/2" above the hem if there is no border. You can also place the monogram angled in the corner point approx 1" - 1 1/2" above the point depending on the size of the lettering using. Most often lettering sizes range from 1/2" - 2".



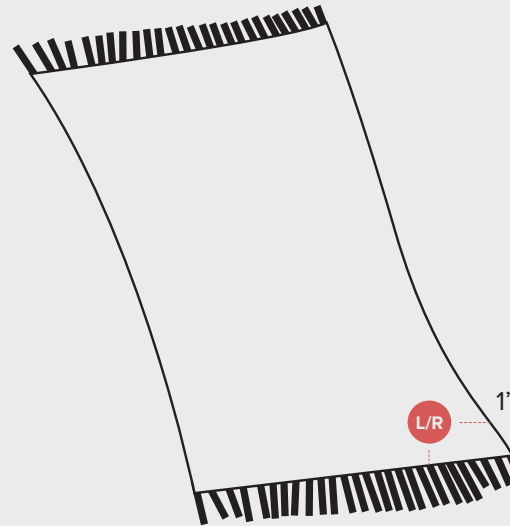
Monogram Placement

Pillow Cases, Blankets & Robes



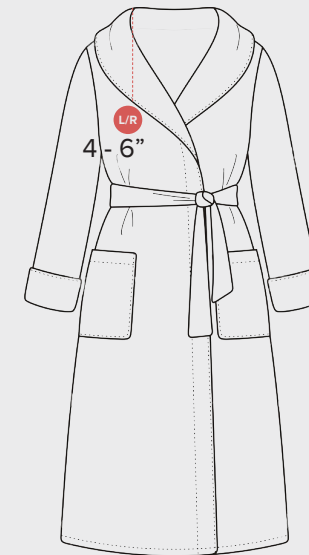
Pillow Cases;

Centered in all directions, in the middle of the case. These monograms can be larger in size, depending on the size of the pillow case, some can be as large as 12”.



Blankets;

Bottom right or left corner with 1” spacing on both sides. Monograms can also be centered side to side, 3 - 4” above bottom edge. These monograms can also be placed at an angle from the center point.



Robes;

4 - 6” down from the left or right shoulder seam. These monograms can be up to 4” at the highest point, however can also be much smaller. Monogramming on robes can be much more versatile than the standard outwear.