

Published by Lone Wolf Publishing, PO Box 3984
Missoula, MT 59806 (406) 251-6228
<http://www.montana.com/lonewolf/>

MONTANA Chess News


The Montana Chess News is published for the Montana Chess Association, an affiliate of the US Chess Federation. The MCA is committed to promoting the game of Chess in Montana through education, competition, and providing forums of discussion. Subscription via membership in the MCA is available for the following: \$6 per year regular and \$3 per year junior.

May - June 1996 Vol. XXI Issue 3

From the Editor:

Hello everyone. As you all know by now, Les Brennan, has retired from publishing the MCA Newsletter. His efforts have been appreciated by all who have received it over the years, and I only hope that I can continue on in publishing the same high quality newsletter that we have come to expect. Since I am new at this, you may notice some changes from time to time, while I work on 'getting it right'. Graciously, Sherwood Moore is assisting me in production of this newsletter, so do not forget to thank him for his continual work for the MCA. It is my desire, to produce an informative and useful newsletter. For this reason, I hope to introduce some new items which will be implemented in the next issue. They are:

- A Classified Ad section, where you can advertise any old equipment or books (Chess related) that you would like to sell. Or perhaps issue a challenge for a match! All proceeds will go into improving the MCA newsletter. The cost will be 10 cents per word with a



In this issue,

Minutes from the MCA's Business Meeting

*UCCC Closed Club Championship
tournament tables and games*

*World Championship games 1-9
Karpov vs Kamsky*

Qualifier list for the State Closed

Montana Tournament announcements

minimum charge of \$2.00 per ad. All ads will appear in two issues of the MCA newsletter. So, here is your opportunity to clean out that old equipment that you do not use anymore, while saving your fellow chess players some cash. Of course, being new at this, I would really appreciate any feedback that you might have, including some ideas to make our newsletter better. One area where I am really looking for help is in the annotation of games. If you would like to annotate one of your games for inclusion in the newsletter, please feel free to do so. This is one area where I feel that it is important to get as diverse of an opinion as possible. Since everyone has their own playing style, we could all learn from each other, and improve our game in the process. In this issue I have included games annotated by both Greg Nowak and Paul Motta. Their playing styles are vastly different, and I hope you enjoy looking into their heads to see what they were thinking.

Minutes of the 61st Montana State Chess Association Business Meeting

The following members were elected to serve as officers of the MCA for the 1996-1997 term.

- President - Jim Skovron
- Executive V.P. - Mike Jensen
- Western V.P. - Michael Martinez
- Eastern V.P. - Zygmund Mayer
- Secretary/Treasurer - Sherwood Moore

The location of the 1997 Montana State Open was selected to be Billings.

Les Brennan was given the 1996 MEMBER OF THE YEAR award. For all your hard work for the MCA in the past, we thank you Les.

Three motions were presented to the membership for changes in the BY-LAWS.

- Enlarging the Montana State Closed tournament from 6 players to 10. Passed by a vote of 17 to 7.
- Making this change retroactive to this year's Montana Closed. Passed by a vote of 15 to 8.
- Moving the Montana State Open to the 2nd weekend of June. *After a short discussion, it was decided that the membership would vote on three dates. A ballot will be included in the November-December MCN. The dates will be in May or June, excluding Mother's Day, Memorial Day, and Graduation Day weekends.*

Qualifiers for the Montana State Closed

- Michael Jensen - Previous Years Champion**
- Michael Long - 1st Grand Prix Winner 30.029 pts**
- Jan Johansson - 2nd Grand Prix Winner 29.366 pts**
- Greg Nowak - 3rd Grand Prix Winner 27.952 pts**
- Zygmund Mayer - 4th Grand Prix Winner 25.366 pts**
- Paul Motta - 1st in "State Open" Order of Finish**
- Keven Smith - 2nd in "State Open" Order of Finish**
- Romie Carpenter - 3rd in "State Open" Order of Finish**
- David Duke - 4th in "State Open" Order of Finish**
- William McBroom - 5th in "State Open" Order of Finish**

The alternate for the Grand Prix is Roamie Carpenter. The alternates from the State Open order of finish are:

- 1st Michael Runge
- 2nd Robert Martin

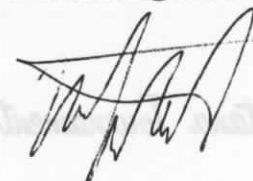
The State Closed is being held in Butte on September 21st & 22nd. The playing site is the War Bonnet Inn. Those who have qualified, please notify Sherwood Moore no later than August 31, 1996, if you will or will not be playing. The alternates need not respond at this time.

The MCN now has a WWW site !!!

For those of you who are connected to the information superhighway, please note that the Montana Chess News now has a WWW site. You can reach it at the following address:

<http://www.montana.com/lonewolf/chess.htm>
(please note that there are no spaces in this address)

The site will include information about upcoming chess events in Montana and an Internet Edition of the Montana Chess News. It will also feature links to other chess sites on the Internet and a special section featuring Montana Chess Players. If you would like to be included, then please send a short biography of yourself, and a picture to Lone Wolf Publishing, PO Box 3984, Missoula, MT 59806. You can also email the bio and picture file if you wish. The email address is martinez@montana.com



An interesting note from outside of Montana....

BOBBY FISCHER MAKES HIS MOVE IN ARGENTINA (Press Release from Argentina)

Bobby Fischer returned to Buenos Aires, Argentina after 25 years and it was as if he had never left. At a press conference on June 19 in the Argentine capital, the World Chess Champion was received by hundreds of journalists and chess fans, many of whom had come from all over the world. It was apparent from the feeling of anticipation in the room before he arrived that the Fischer mystique is alive and well.

The object of the conference was to publicize the launch of Fischer's new game, Fischerandom Chess, and to announce the match of Fischerandom Chess between Philippine Grandmaster Eugene Torre and two-time Argentine champion International Master Pablo Ricardi which begins July 12. Both players attended the conference and displayed enthusiasm regarding the match and the new game.

Before taking questions from the assembled press, Fischer spoke out on several topics. He apologized for bringing up subjects unrelated to Fischerandom Chess, and he then began a counterattack on several companies that he claimed had been defrauding him of huge amounts of money as well as trying to destroy his image. He targeted the British publisher Batsford for releasing a forged and

unauthorized new edition of his renowned chess classic "My 60 Memorable Games", for deliberately making erroneous changes in the text itself and for never having paid him royalties for the book. He also attacked the motion picture company Paramount, producer of the hit film "Searching for Bobby Fischer", saying he never received "a penny" from the film. He also mentioned a CD-ROM, "Bobby Fischer Teaches Chess", that had been made using his name unlawfully. He strongly criticized US Secretary of Commerce Mickey Kantor for not protecting his intellectual property rights in direct contradiction with Kantor's position on Red China, which Kantor has denounced for alleged violations of international copyrights. Fischer angrily accused the U.S. government of a double standard and disgusting hypocrisy in this regard. He made the point that his new, improved version of classical chess will eliminate the large amount of study and analysis that are involved in chess. He stated that many games are prearranged before the players begin the game, and that even the so-called world championship matches between Russian players Kasparov and Karpov had been prearranged, and that this would be impossible in Fischerandom Chess.

Fischer also ridiculed the U.S. government for indicting him and issuing a federal arrest warrant in his name for his alleged violation of an executive order by then President Bush barring U.S. citizens from doing business with Yugoslavia. Fischer claimed one of the reasons the U.S.

government has indicted him and issued the arrest warrant, which is valid all over the USA, was to prevent him from returning to the USA to get access to his enormous file on the first so-called world championship match between Karpov and Kasparov so that he could write a book proving that that match was prearranged move by move.

After making these impassioned remarks, Fischer answered questions from the press for nearly an hour. In explaining the concepts behind Fischerandom Chess, Fischer said that although the rules are basically the same as those of traditional chess, each game begins from a different starting position, randomly chosen by the Fischerandom Chess Computerized Shuffler, making creativity and chess talent more important than analysis and memorization. He also pointed out that due to such long hours in front of the computer screen and with books, many top young players today, such as Kamsky, Kramnik and Anand, wear thick glasses. He also mentioned that all of the study necessary to play conventional chess made it into hard work, and that he had got into chess in order to avoid work!

With many people wondering about the future of chess after the IBM computer Big Blue beat Garry Kasparov earlier this year, Fischer's statement that computers would be at a considerable disadvantage in Fischerandom Chess received a great deal of attention. He stated that without access to databases of the millions of opening variations in

traditional chess, computers do not really play chess all that well.

Now the world awaits the first Fischerandom Chess match which will commence at Pasaje Dardo Rocha in the Argentine city of La Plata on July 12. The match between Torre and Ricardi will be played until one player accumulates four victories, draws not counting.

The appearance of Robert J. Fischer in Buenos Aires left no one disappointed. After finishing with the questions, Bobby signed autographs for the dozens of fans who had come to catch a glimpse of the legendary genius. Many of the chess fans had clear memories of his last visits to Buenos Aires in the early seventies. Fischer's popularity here was clearly shown as well by the intense coverage by all the local media. Everyone is eagerly looking forward to Bobby Fischer's next move, whether it be on or off the board.

RULES OF FISCHERANDOM CHESS

A little known and long-discarded offshoot of Classical Chess is the realm of so-called "Randomized Chess" in its various forms.

Fischerandom Chess (hereinafter referred to as "F.R. Chess") stands for Bobby Fischer's new and improved version of "Randomized Chess".

F.R. Chess uses algebraic notation exclusively.

At the start of every game of F.R. Chess, both players' Pawns are set up exactly as they are at the start of every game of Classical Chess.

In F.R. Chess, just before the start of every game, both players' pieces on their respective back rows receive an identical random shuffle using the Fischerandom Chess Computerized Shuffler, which is programmed to set up the pieces in any combination, with the provisos that one Rook has to be to the left and one Rook has to be to the right of the King, and one Bishop has to be on a light-colored square and one Bishop has to be on a dark-colored square. White and Black have identical positions. From behind their respective Pawns the opponents' pieces are facing each other directly, symmetrically. Thus for example, if the shuffler places White's back row pieces in the following position: Ra1, Bb1, Kc1, Nd1, Be1, Nf1, Rg1, Qh1, it will place Black's back row Pieces in the following position, Ra8, Bb8, Kc8, Nd8, Be8, Nf8, Rg8, Qh8, etc.

In F.R. Chess there are 960 possible starting positions, the Classical Chess starting position and 959 other starting positions.

Of necessity, In F.R. Chess the castling rule is somewhat modified and broadened to allow for the possibility of each player castling either on or into his or her left side or on or into his or her right side of the board from all of these 960 starting positions.

Please note the following points:

a) In F.R. Chess, depending on the pre-castling position of the castling King and Rook, the castling maneuver is performed by one of these four methods:

1. By on one turn making one move with the King, and making one move with the Rook ("double-move" castling).
2. By transposing the position of the King and the Rook ("transposition" castling).
3. By making only one move - with the King ("King-move-only" castling).
4. By making only one move - with the Rook ("Rook-move-only" castling).

Clarification: In F.R. Chess, whether you "double-move" castle, "transposition" castle, "King-move-only" castle, or "Rook-move-only" castle, in all cases always both the King and the Rook jointly are deemed to be castling, and to have castled.

b) In F.R. Chess when "double-move" castling, if the King is standing on the square the Rook will occupy naturally you must move the King first and then the Rook; if the Rook is standing on the square the King will occupy naturally you must move the Rook first and then the King; otherwise whether you move the King first and then the Rook, or the Rook first and then the King is strictly your choice.

c) In F.R. Chess, when "double-move" castling either the King jumps over the Rook or else the Rook jumps over the King.

d) In F.R. Chess, when "King-move-only" castling the King always jumps over the Rook.

e) In F.R. Chess, when "Rook-move-only" castling the Rook always jumps over the King.

f) "a"-side castling (0-0-0), and "h"-side castling (0-0) are the F.R. Chess equivalents of Queen-side or long castling (0-0-0), and King-side or short castling (0-0) respectively, of Classical Chess.

g) In F.R. Chess:

1. White's "a"-side castling (0-0-0) is performed with the hitherto unmoved White King and the hitherto unmoved Rook standing to its left. After White's "a"-side castling (0-0-0) the White King stands on c1 and the aforementioned Rook stands on d1. Black's "a"-side castling (... 0-0-0) is performed with the hitherto unmoved Black King and the hitherto unmoved Rook standing to its right. After White's "a"-side castling (0-0-0) the Black King stands on c8 and the aforementioned Rook stands on d8.

2. White's "h"-side castling (0-0) is performed with the hitherto unmoved White King and the hitherto unmoved Rook standing to its right. After White's "h"-side castling (0-0) the White King stands on g1 and the aforementioned Rook stands on f1. Black's "h"-side castling (... 0-0) is performed with the hitherto unmoved Black King and the hitherto unmoved Rook standing to its left. After Black's "h"-side castling (... 0-0) the Black King stands on g8 and the aforementioned Rook stands on f8.

h) When castling in F.R. Chess, you are not allowed to make any capture(s).

i) When castling in F.R. Chess, no other piece(s), yours or your opponent's, are allowed to stand between the castling King and Rook.

j) In F.R. Chess, when in check, you are not allowed to castle. Or, put another way: In F.R. Chess you are not allowed to castle "out" of check.

k) In F.R. Chess you are not allowed to castle into check.

l) When castling in F.R. Chess, your King is not allowed to move through check, or shall we say any "checked" square (same thing), nor is your King allowed to jump over your own Rook if and when said Rook stands on a "checked" square. (A "checked" square is a square that is attacked by one or more of your opponent's pieces.)

m) In F.R. Chess, after completing your first move of "double-move" castling it is quite possible and not at all illegal for your opponent to be in a position where, were it your opponent's move, your opponent would be in stalemate, check, or checkmate. Should after completing your first move of "double-move" castling one of these three aforementioned situations exist you are to ignore it and make your prescribed second move of "double-move" castling.

n) Exception: In F.R. Chess, when your first move of "double-move" castling, or at least what could become your first move of "double-move" castling, also constitutes a completely standard non-castling King or Rook move, the choice of whether to proceed with your second move of "double-move" castling or to consider your move as an already completed non-castling move is yours to make. You signify

your choice for the former by first making your second move of "double-move" castling and then pushing the appropriate button on the chess clock, you signify your choice for the latter simply by pushing the appropriate button on the chess clock.

o) Suggestion: When playing a friendly game of F.R. Chess without benefit of a chess clock, to avoid any possible confusion or disputes, it might sometimes be a good idea to announce to your opponent just before you castle, "I'm going to castle."

p) In F.R. Chess:

1. Once the White King has moved, White is not allowed to castle for the rest of the game. Once the Black King has moved, Black is not allowed to castle for the rest of the game.

2. Once the heretofore unmoved Rook standing to the left of the unmoved White King has moved, White is not allowed to "a"-side castle (0-0-0) for the rest of the game. Once the heretofore unmoved Rook standing to the right of the unmoved Black King has moved, Black is not allowed to "a"-side castle (... 0-0-0) for the rest of the game.

3. Once the heretofore unmoved Rook standing to the right of the unmoved White King has moved, White is not allowed to "h"-side castle (0-0) for the rest of the game.

Once the heretofore unmoved Rook standing to the left of the unmoved Black King has moved, Black is not

allowed to "h"-side castle (... 0-0) for the rest of the game.

4. Any appearances to the contrary notwithstanding, you are not considered to be castled or to have castled unless you yourself have actually castled, i.e. performed the castling maneuver. In other words: If you haven't castled, you haven't castled.

5. Once White has castled, White is not allowed to castle again for the rest of the game. Once Black has castled, Black is not allowed to castle again for the rest of the game.

q) Tip: In F.R. Chess, when it is momentarily impossible to "a"-side castle (0-0-0) because of the obstructing position of your other unmoved Rook, or vice versa, when it is momentarily impossible to "h"-side castle (0-0) because of the obstructing position of your other unmoved Rook, do not be confounded. These are frequent occurrences in F.R. Chess. Play proceeds in accordance with the rules in this rulebook.

r) Remark: In F.R. Chess, depending upon the starting position, and how the game develops, it may often occur that in the positions produced immediately after "a"-side castling (0-0-0), one, two, or all three of the squares for White a1, b1, and e1 (for Black a8, b8, and e8), and after "h"-side castling (0-0), one or both of the squares for White e1 and h1 (for Black e8 and h8) are not vacant, as they automatically are, for example, in Classical Chess.

All the other rules are the same as in Classical Chess.

If you are ever in any doubt about the correct "before" and "after" castling positions in F.R. Chess, please consult the following tables, showing all (84) possibilities of castling, (42) for White, and (42) for Black:

All twenty-one White "Before" and the one "After" position of "a"-side castling (0-0-0):

Before: Kg1; Rf1, e1, d1, c1, b1 or a1.
After: Kc1; Rd1.
Before: Kf1; Re1, d1, c1, b1, or a1.
After: Kc1; Rd1.
Before: Ke1; Rd1, c1, b1, or a1.
After: Kc1; Rd1.
Before: Kd1; Rc1, b1 or a1.
After: Kc1; Rd1.
Before: Kc1; Rb1 or a1
After: Kc1; Rd1.
Before: Kb1; Ra1
After: Kc1; Rd1.

All twenty-one White "Before" and the one "After" position of "h"-side castling (0-0):

Before: Kb1; Rc1, d1, e1, f1, g1 or h1.
After: Kg1; Rf1.
Before: Kc1; Rd1, e1, f1, g1 or h1
After: Kg1; Rf1.
Before: Kd1; Re1, f1, g1 or h1
After: Kg1; Rf1.
Before: Ke1; Rf1, g1 or h1
After: Kg1; Rf1.
Before: Kf1; Rg1 or h1
After: Kg1; Rf1.
Before: Kg1; Rh1
After: Kg1; Rf1.

All twenty-one Black "Before" and the one "After" position of "a"-side castling (... 0-0-0):

Before: Kg8; Rf8, e8, d8, c8, b8 or a8
After: Kc8; Rd8.

Before: Kf8; Re8, d8, c8, b8 or a8
After: Kc8; Rd8.
Before: Ke8; Rd8, c8, b8 or a8
After: Kc8; Rd8.
Before: Kd8; Rc8, b8 or a8
After: Kc8; Rd8.
Before: Kc8; Rb8 or a8
After: Kc8; Rd8.
Before: Kb8; Ra8
After: Kc8; Rd8.

All twenty-one Black "Before" and the one "After" position of "h"-side castling (... 0-0):

Before: Kb8; Rc8, d8, e8, f8, g8 or h8
After: Kg8; Rf8.
Before: Kc8; Rd8, e8, f8, g8 or h8
After: Kg8; Rf8.
Before: Kd8; Re8, f8, g8 or h8
After: Kg8; Rf8.
Before: Ke8; Rf8, g8 or h8
After: Kg8; Rf8.
Before: Kf8; Rg8 or h8
After: Kg8; Rf8.
Before: Kg8; Rh8
After: Kg8; Rf8

Games Section

Mayer Z. - Nowak Greg
Montana State Open
The Grob 1996

Annotations by Greg Nowak

1. g4

Oh boy, another Grob! White causes a breach in his K-side pawn formation and make the prospect of K-side castling look more risky. The opening design makes a difference but mostly it is how you execute your ideas that make the larger difference. Zygmund, by now, has lots of insight to make up for the flaws.

1... c6

Super solid, I had falsely assumed he would follow up with 2. g2 I had played 1..... d7c6 with better results from the opening. I could just buy a Grob book, but for now, I'm content with just toying with defenses for it.

2. d4 d5

Consistent, solid, and easy. The enterprising 2. e5! was more time consuming to figure out, I wish that I would have thought of it during the game, but I was tired. (Fatigue leads to dull moves and occasional blunders.) White is in no position to fight Black in an

open struggle. 3. de5 f6! if 4. dxf3 fe5 5. dxe5? then Wa5+ and 6. ... WxW wins. 4. ef6 dxf6 5. h3 d5c5 with a jump in development in an open game. OR 3. c3 e4 followed by 4. ... d5 In a position similar Mayer - Gertler (New England Master) Black followed by 4. ... da6 and 5. ... db2

3. h3 d7

Another solid stodgy move. 3. ... e5 is still playable. Another set-up is 3. ... h5 4. g5 g6, MY plans were to win in the long term.

4. dxf3 Wc7

Getting the h2-b8 diagonal before 5. d5f4 4. ... e6 was better, if 5. d5f4 then ... Wb6 Black could follow up with c5 using the better b6 square for his Queen.

5. c4 e6

Black has gotten away with his inaccuracies because of White's lack of build up.

6. cd5



6... ed5

I think the plan of 6 ... cd5 7. dxc3 de7 8. d5g5 dxc6 9. dxc1 a6 10.

dh4 db6 is better.

(10 ... d6 11. e4 de4 12. de4 db4+ 13. de2!?! With an unclear bizarre game. White has a3 and db3 coming soon. 13... f5!?! 14. gf5 ef5 15. deg5 During the actual game would I want to gamble my place in the Closed in this gobbledy-gook position? 15... 0-0? 16. Wb3+ Wh8 17. df7+ Wf7 (or like the famous Phildor's Legacy 17 ... Wg8 18. dh6+ Wh8 19. Wg8+ Wg8 20. df7#))

11. dg3 d6 12. d6 Wd6 improving the position of Black's Queen while keeping Black's King-side pawns intact.

7. dxc3 d6 8. Wc2 db6



9. e3

A good time management move. There were more intricacies in 9. e4, and after 9. ... de4 10. de4 db4+, White has an isolated pawn on d4 and a loose position. In Sudden Death chess, we must

take some shortcuts.

9... ♖e7 10. ♔d3 ♔d7

Holding White "at bay", but failing to create enough worries. I achieved a good pawn structure, full development and left open the option of castling on either side. Now to make moves without setting up targets.

11. b3 a5

Trying to probe a weakness while not making one of my own. Wait and watch.

12. a4

It worked! Simply ignoring me with ♔b2 would have been better.

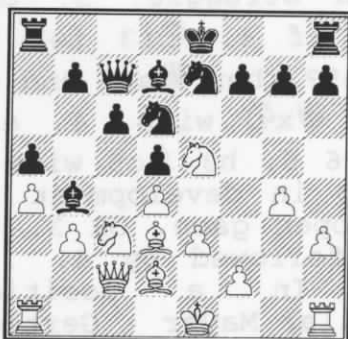
12... ♔b4

Now I can continue to bide my time, keeping up my guard while waiting for a break or frustrating my opponents patience.

13. ♔d2



13... ♖bc8 14. ♖e5 ♖d6



15. f4

15. ♔h7 g6 16. ♔g6
(16. ♖g6 fg6 17.
♔g6+ ♔f8)

16... fg6 17. ♖g6 ♖g6

18. ♗g6+ ♔f8

15... g6

I still cover the f5 square 4 times, planning f5 to try an obtain operating squares.

16. ♖b5

White has black uncomfortably cramped. Why not a skillful "fiddle faddle" move? Just to see if Black loses his nerve. How about ♔f2 and then ♔g3. If Black goes for play with f5, White has g5, h4, h5 etc. White's chosen move breaks the tension and eases Black's constrictions.

16... ♔d2+ 17. ♔d2 ♗b8 18.

♖d7 ♔d7 19. ♖c3 f5 20. ♖af1

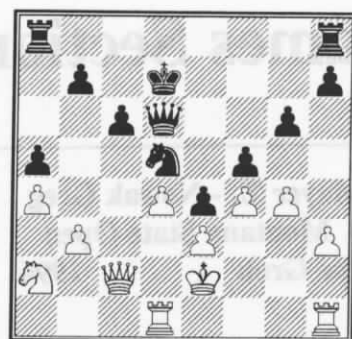
♖e4+

Black is in cruise control for the next 5 moves.

21. ♔e4 de4 22. ♖d1 ♗d6 23.

♗e2 ♖d5 24. ♖a2

The horse is lame there. White is probably trying to keep the game complex, hoping for an error.



24... b5

If he doesn't take, allowing b4, then Black is a Knight ahead for all practicality.

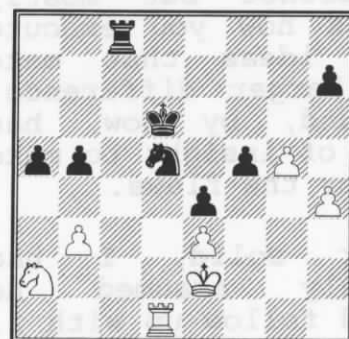
25. gf5 gf5 26. ♖hg1 ♖hg8 27.

ab5 cb5 28. ♗c5 ♗c5 29. dc5

♗c6 30. ♖g5 ♖g5 31. fg5 ♗c5

32. h4 ♖e8 33. ♖c1+ ♔d6 34.

♖f1 ♖c8 35. ♖d1



35... ♖c2+ 36. ♖d2 ♖a2

they shoot horses don't they? 0:1

Motta Paul - Jensen Michael

Montana State Open

Blackmar-Diemer Gambit 1996

1. d4 ♖f6 2. ♖c3 d5 3. e4 ♖e4

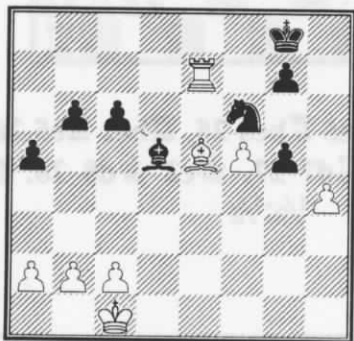
4. ♖e4 de4 5. ♔e3 b6 6. ♔b5+

c6 7. ♔c4 ♔a6 8. ♔b3 e5 9.

♗h5 ♗f6 10. de5 ♗g6 11. ♗h3

♔e7 12. ♖e2 ♔g5 13. 0-0-0 0-0

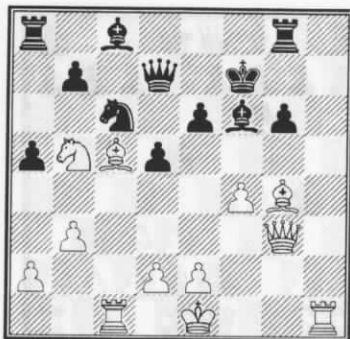
14. ♖f4 ♗h6 15. ♗g3 ♕h4 16. ♗g4 ♗g5 17. ♗g5 ♖g5 18. e6 ♕f4 19. ef7+ ♗h8 20. ♕f4 ♕e2 21. ♖de1 ♕h5 22. ♕d6 ♖f7 23. ♕f7 ♕f7 24. ♖e4 ♖a6 25. ♖e7 ♕d5 26. ♖he1 h6 27. ♖e8+ ♖e8 28. ♖e8+ ♗h7 29. ♖e7 ♖c5 30. ♕e5 ♖e6 31. f3 a5 32. g4 ♗g8 33. f4 ♗f8 34. ♕d6 ♗g8 35. f5 ♖c5 36. h4 ♖e4 37. ♕e5 ♖f6 38. g5 hg5



39. hg5 ♖h5 40. g6 a4 41. ♖e8# 1:0

Mayer Z. - Brownler
Montana State Open
The Grob 1996

1. g4 c6 2. c4 d5 3. h3 e6 4. ♕g2 ♖d7 5. b3 a5 6. ♕b2 f6 7. ♖f3 ♕d6 8. ♗c2 ♗c7 9. ♖c3 ♖e7 10. ♖c1 ♖e5 11. cd5 ♖f3+ 12. ♕f3 cd5 13. ♗d3 ♗d7 14. g5 ♕e5 15. gf6 ♕f6 16. ♕a3 ♖b8 17. ♖b5 ♖c6 18. ♕h5+ ♗d8 19. ♗g3 ♕e5 20. f4 ♕f6 21. ♕d6 g6 22. ♕g4 ♖a8 23. ♕c7+ ♗e8 24. ♕b6 ♗e7 25. h4 ♗f7 26. ♕c5 ♗d7 27. h5 ♖g8 28. hg6+ hg6

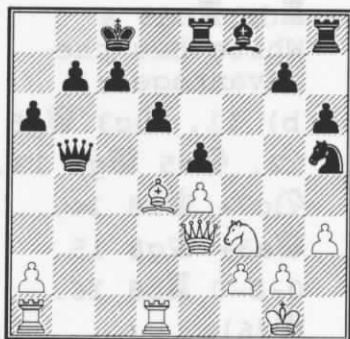


29. ♖d6+ ♗e7 30. ♖c8+ ♗d8 31. ♖b6 ♗g7 32. ♖a8 1:0

Long - Stubberud
Montana State Open
SCOTCH gam. & PONIANI'S
OPENING

1996

1. e4 e5 2. ♖f3 ♖c6 3. d4 ed4 4. c3 dc3 5. ♕c4 cb2 6. ♕b2 d6 7. 0-0 ♕e6 8. ♕e6 fe6 9. ♖c3 ♖f6 10. ♗b3 ♗d7 11. ♖g5 0-0-0 12. ♖fd1 ♖e8 13. h3 h6 14. ♖f3 ♖h5 15. ♖b5 a6 16. ♖bd4 ♖d4 17. ♕d4 ♗b5 18. ♗e3 e5



19. ♕a7 ♕e7 20. ♖ab1 ♗d7 21. ♗b3 c6 22. ♖e5 1:0

Smith Kevin - Hanson
Montana State Open
Petroff 1996

1. e4 e5 2. ♖f3 ♖f6 3. ♖e5 d6 4. ♖f3 ♖e4 5. d3 ♖f6 6. c4 ♕e7 7. ♕g5 0-0 8. ♕e2 d5 9. cd5 ♖d5 10. ♕e7 ♗e7 11. 0-0 ♕f5 12. ♖c3 ♖f4 13. ♖e1 ♖c6 14. ♕f1 ♗d7 15. d4 ♖fe8 16. ♕b5 ♖ad8

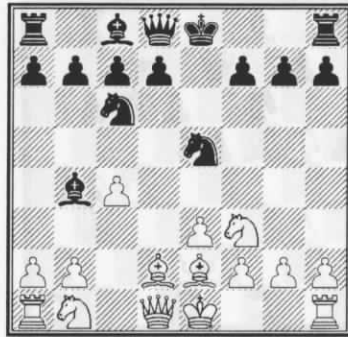
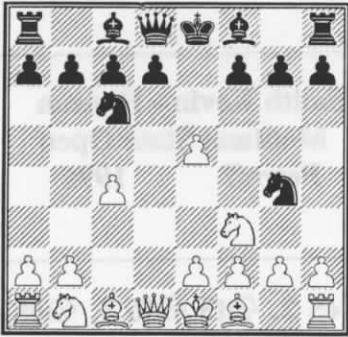


17. ♖e5 ♗d6 18. ♕c6 ♖e5 19. de5 ♗d1 20. ♖ad1 1:0

Stubberud - Erickson Ron
Montana State Open
BUDAPEST def. 1996

Annotations by Greg Nowak

1. d4 ♖f6 2. c4 e5 a practical tournament defense. Unfamiliar to most, if one masters it, its surprise value outweighs its flaws, especially in Montana. 3. de5 ♖g4 4. ♖f3 ♖c6



♞c4 15. ♜c3 ♜a5 16. ♜a5
 ♞a5 17. 0-0-0 d5 18. e4 de4 19.
 b4 ♞c4 20. ♞d4 ♞e5 21. ♞e4
 f6 22. ♞d3 0-0-0 23. ♞e5 fe5



24. ♞e5 ♞he8 25. ♞he1 ♞e5 26.
 ♞e5 ♞d7 27. ♞c2 ♞d8 28. f4
 ♞d5 1/2:1/2

**Johannson J - Duke David
 Montana State Open
 King's Indian Attack 1996**

1. ♞f3 ♞f6 2. g3 g6 3. ♞g2
 ♞g7 4. 0-0 0-0 5. d3 d5 6.
 ♞bd2 b6 7. e4 de4 8. de4 ♞b7
 9. ♜e2 e6 10. ♞e1 ♞bd7 11.
 ♞d4 ♞e8 12. ♞4b3 a5 13. a4
 ♜b8 14. ♞f1 ♜a7 15. c3 ♞d8
 16. ♞d1 ♜a8 17. f4 ♞ef6 18.
 e5 ♞g2 19. ♜g2 ♜g2+ 20.
 ♞g2 ♞d5 21. ♞e3 ♞fe8 22.
 ♞d4 ♞b8 23. ♞b5 ♞a6 24.
 ♞d4 ♞f8 25. ♞g1 ♞e7 26.
 ♞e3 ♞c6

5. e3 looks ok, but I sensed there should be something better.

if 5. ♜d2

a) 5 ... ♞ge5 6.

♞e5 ♞e5 7. ♜g5 ;

b) 5 ... ♞b4 6. ♞c3

with the plan to fianchetto the Q's

Bishop. If ♞ge5 7.

♞e5 ♞e5 8. a3 ♞c4

(8 ... ♞c3 9.

♜c3 d6 10. b3

♜h4 11. ♞b2

♞g4 12. g3

does White

have anything

to fear from

tame moves?

White has the

a1-h8

diagonal, Q-

file, and the

long K-side

fianchetto

h1-a8.)

9. ♜d4 ♞c3+ 10.

♜c3 looking at

Black's g2 square.)

5... ♞ge5 6. ♞e2 ♞b4 + 7.

♞d2

7... d6

How about 7 ... ♞d2+

8. ♜d2 d6 9. ♞c3 ♞f3+

10. ♞f3 ♞e5 11. ♞e2

a5 12. ♞d1 ♞d7 13.

♞d5 ♞c5 14. b3 0-0

eventually c6, and

Black has a good game.

Otherwise 7.. d6

8. ♞b4 ♞f3+ 9. ♞f3

♞b4 10. ♜a4+ ♞c6 11.

♞c6+ bc6 12. ♜c6+ ♞d7

13. ♜e4+ ♞e6 14. ♞c3

a clear pawn ahead)

(8... ♞b4 9. ♞e5

de5 10. ♜a4+ ♞c6

11. ♞c3

a) 11. ♜a3 ♜d6

12. ♜d6 cd6 13.

♞c3 ♞e6 14.

0-0-0 ♞e7 15.

♞d2 ♞hd8 &

White has the

advantage ;

b) 11. ♞c3 ♜g5

12. ♞d5 ♜g2 13.

♞c7+ ♞f8 14.

♜a3+ ♞g8 15.

0-0-0 ♞b8 16.

♜d6)

11... 0-0 12. 0-0

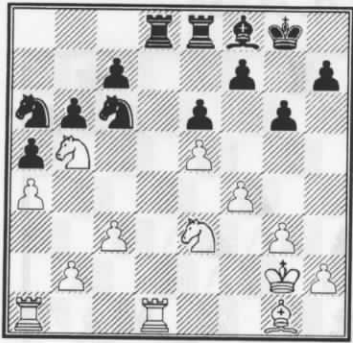
with a better game

for White.

8. ♞c3 ♞e6 9. ♞d5 ♞d2+ 10.

♜d2 ♞f3+ 11. ♞f3 ♞e5 12.

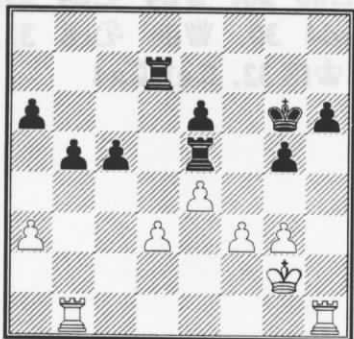
♞e2 c6 13. ♞f4 ♞c4 14. ♞c4



27. ♖d8 ♜d8 28. ♜d1 ♜d1 29.
♘d1 ♘e7 30. ♘e3 ♘c8
1/2:1/2

Nowak Greg - Brennan Les
Montana State Open
ENGLISH OPENING 1996

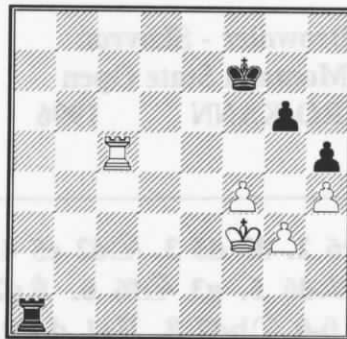
1. g3 c5 2. ♔g2 ♘c6 3. c4 g6 4.
♘c3 ♔g7 5. a3 e6 6. d3 a6 7.
♜b1 ♘ge7 8. ♘f3 d5 9. cd5
♘d5 10. ♔d2 ♘c3 11. bc3 0-0
12. ♖c1 ♜b8 13. ♔h6 ♖c7 14.
h4 f6 15. ♔g7 ♖g7 16. h5 g5
17. ♘g5 fg5 18. ♔c6 h6 19. 0-0
b5 20. ♖e3 ♖c3 21. ♖e4 ♜f5
22. ♜fc1 ♖f6 23. f3 ♜e5 24.
♖g6+ ♖g6 25. hg6 ♔b7 26.
♔b7 ♜b7 27. e4 ♔g7 28. ♔g2
♔g6 29. ♜h1 ♜d7



30. f4 gf4 31. gf4 ♜h5 32. ♜hd1
♔f6 33. ♜h1 ♜h1 1/2:1/2

Carpenter Romie - Motta Paul
Montana State Open
ENGLISH OPENING 1996

1. c4 e5 2. g3 c6 3. d4 ed4 4.
♖d4 d5 5. cd5 cd5 6. ♔g2 ♘f6
7. ♘f3 ♘c6 8. ♖a4 ♔e7 9. 0-0
0-0 10. e3 ♔e6 11. ♘c3 a6 12.
♘e2 b5 13. ♖d1 ♖d7 14. ♔d2
♘e4 15. ♘ed4 ♘d2 16. ♖d2
♔b4 17. ♖d3 ♘d4 18. ♘d4
♜fd8 19. a3 ♔c5 20. ♜ac1 ♔d4
21. ♖d4 ♜ac8 22. b4 ♜c4 23.
♖b6 ♖c8 24. ♜c4 dc4 25. ♔b7
♖b8 26. ♖a6 ♔c8 27. ♔c8 ♜c8
28. a4 ba4 29. ♖a4 g6 30. ♜c1
c3 31. ♖b3 ♖c7 32. ♜c2 ♖c4
33. ♖c4 ♜c4 34. b5 ♔f8 35. b6
♔e7 36. b7 ♜b4 37. ♜c3 ♜b7
38. h4 ♜d7 39. ♔g2 ♔e6 40. f4
f5 41. ♔f3 h5 42. e4 fe4+ 43.
♔e4 ♜d1 44. ♜c6+ ♔f7 45.
♜c5 ♜e1+ 46. ♔f3 ♜a1



47. ♜g5 ♜a3+ 48. ♔e4 ♜a4+
49. ♔e5 ♜a5+ 50. ♔d6 ♜a6+
51. ♔c5 ♔f6 1/2:1/2

Shughart Dave - Smith Steve
Montana State Open
ITALIAN GAME & HUNGARIAN

def. 1996

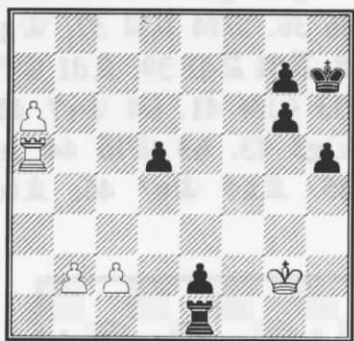
1. e4 e5 2. ♘f3 ♘c6 3. ♔c4
♔c5 4. c3 ♖e7 5. b4 ♔b6 6. a4
a6 7. ♔a3 d6 8. 0-0 ♘f6 9. d4
♔g4 10. d5 ♘b8 11. ♘bd2 0-0
12. ♔b3 ♘bd7 13. c4 ♔h5 14.
♜c1 a5 15. ♖c2 ab4 16. ♔b4
♘c5 17. ♜fe1 ♘g4 18. ♜e2
♔g6 19. h3 ♘f6 20. ♜f1 ♘h5
21. ♔c5 ♘f4 22. ♜ee1 ♔c5 23.
♔h2 f5 24. g3 fe4 25. ♘h4 e3
26. ♘g6 ♘g6 27. ♘e4 ef2 28.
♘f2 ♔f2 29. ♜f2 ♜f2+ 30.
♖f2 ♜f8 31. ♖e3 ♖f6 32. ♔g2
♘e7 33. g4 ♘g6 34. c5 ♖f4 35.
cd6 cd6 36. ♖f4 ♜f4 37. ♔g3
♜d4 38. ♜d1 ♜d1 39. ♔d1 ♔f7
40. ♔f3 ♘f4 41. h4 ♔e7 42.
♔e4 ♘g2 43. h5 ♔f6 44. a5
♘f4 45. ♔a4 ♔e7 46. ♔b5
♘h3



47. ♔c6 ♔d8 48. ♔b7 ♔c7 49.
♔c6 ♘f4 50. ♔d7 h6 51. a6
1/2:1/2

Smith Steve - Carpenter Romie
Montana State Open
CARO-KANN 1996

1. e4 c6 2. d4 d5 3. e5 ♖f5 4. ♗c3 e6 5. g4 ♖g6 6. ♖e3 h5 7. g5 ♗d7 8. h4 c5 9. ♗ge2 cd4 10. ♖d4 ♖c5 11. ♖c5 ♗c5 12. ♗f4 ♗e7 13. ♗b5 ♗e4 14. ♖d3 ♗b6 15. ♗e2 a6 16. ♖e4 ab5 17. ♗g6 fg6 18. ♖d3 0-0 19. 0-0 ♖a4 20. ♗g2 ♖g4+ 21. ♗h3 ♗d4 22. ♗e3 ♖h4+ 23. ♗g2 ♖g4+ 24. ♗h2 ♗e3 25. fe3 ♖f1 26. ♖f1 ♖g5 27. ♖f4 ♖e5 28. ♖b4 ♗f5 29. ♖b5 ♖e3 30. ♖b7 ♗h7 31. a4 e5 32. a5 e4 33. ♖b5 ♗d6 34. a6 ♗b5 35. ♖b5 ♖e1 36. ♖a5 e3 37. ♗g2 e2

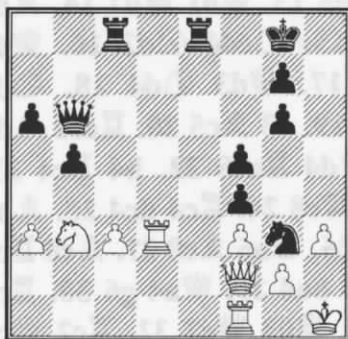


38. ♗f2 ♖f1+ 39. ♗e2 ♖f8 40. a7 ♖a8 41. b4 1:0

Erickson Ron - Johannson J
Montana State Open
1996

1. ♗f3 d6 2. d4 ♖g4 3. e3 ♗d7 4. h3 ♖h5 5. ♖e2 e5 6. de5 de5

7. b3 ♖b4+ 8. ♗fd2 ♖g6 9. a3 ♖e7 10. ♖b2 c6 11. ♗c4 ♗c7 12. ♗c3 ♗gf6 13. b4 a6 14. ♖c1 ♖d8 15. 0-0 0-0 16. ♗e1 ♖fe8 17. f3 b5 18. ♗d2 c5 19. bc5 ♖c5 20. ♗d1 ♗d5 21. ♖d3 ♗b6 22. ♖g6 hg6 23. ♗h1 ♗e3 24. ♗e3 ♖e3 25. ♖d1 ♖c8 26. c3 f5 27. ♗b3 ♗f6 28. ♖d3 ♖f4 29. ♖c1 ♗h5 30. ♖f4 ef4 31. ♗f2 ♗g3+

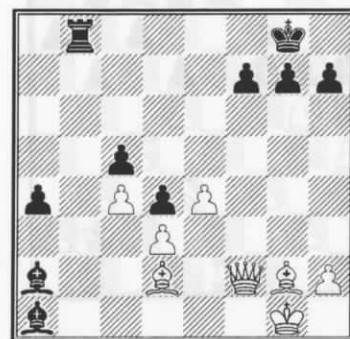


32. ♗g1 ♗f2+ 33. ♗f2 ♖e2+ 34. ♗g1 ♗f1 35. ♗f1 ♖e3 0:1

Browner - Skovron
Montana State Open
CARO-KANN 1996

1. e4 c6 2. d3 d5 3. ♗d2 e5 4. ♗gf3 ♖d6 5. g3 ♗f6 6. ♖g2 0-0 7. 0-0 ♗bd7 8. ♖e1 d4 9. ♗h4 ♖e8 10. ♗c4 ♖f8 11. f4 b5 12. ♗e5 ♗e5 13. fe5 ♖e5 14. ♖f1 ♖h5 15. ♖f6 ♖h4 16. gh4 ♗f6 17. ♗f3 ♗h4 18. ♖f4 ♖e6 19. ♖f1 ♖c8 20. ♗h1 a5 21. ♖f2 ♖b4 22. ♗g1 ♖e1 23. ♖f1 ♖b4 24. ♖f2 ♖a2 25. b3 ♖c3 26. ♖g5 ♗f2+ 27. ♗f2 a4 28. ba4 ba4 29. ♖d2 ♖a1 30.

- c3 c5 31. c4 ♖b8



32. ♖c1 ♖b1 33. ♗g3 ♖b7 34. ♖h6 f6 35. e5 1:0

Duke David - Stubberud
Montana State Open
KINGS' INDIAN def.

SAMISCH var. 1996

1. c4 ♗f6 2. ♗c3 g6 3. e4 d6 4. d4 ♖g7 5. f3 0-0 6. ♖e3 e5 7. ♗ge2 ♗c6 8. d5 ♗e7 9. ♗c1 ♗d7 10. ♖e2 f5 11. 0-0 a5 12. a3 f4 13. ♖f2 g5 14. ♖b1 ♗g6 15. b4 b6 16. ♗a4 ab4 17. ab4 ♖a6 18. c5 bc5 19. bc5 ♗e7 20. c6 ♗f6 21. ♖a6 ♖a6 22. ♖b7 ♖fa8 23. ♗b6 cb6 24. ♖e7 ♗e7 25. ♗b3 ♗e8 26. ♗c2 ♗c7 27. ♗c3 ♗b5 28. ♗b4 ♗d4 29. ♗d4 ed4 30. ♗d6 ♗c8 31. ♗e6+ ♗f8 32. ♖e1 ♖a4



33. d6 d3 34. e5 ♖d4 35. c7 d2
36. ♙d2 ♘d6 37. ed6 1:0

Erickson Ron - Shughart Dave
UCCC Championship
Polish Opening 1996

Annotations by Greg Nowak

1. ♘f3 f5 2. b4

The Polish is not the most effective against the Dutch. Probably best played against a d5 opening response, where the b pawn can take away the c6 square from Black's knight with 2... c6 or 2... c5 3. b5 The Lisityn (Swiss) Gambit is interesting here. (i.e.: 2. e4) It is feisty and psychologically takes away the strategical game Black wants.

[2. e4 fe4 3. ♘g5 ♘f6 4. d3 ed3 (I wish that I could exactly recall the Joe Friedman (2150) Nowak game which went something like 4 ... e5 wisely refusing the Trojan pawn for development. 5. de4 ♙c5 6. ♙c4 ♖e7 7. 0-0

(by the way 7. ♙f7+ ♖d8 8. ♘e6+ wins) 7... d6 8. ♘c3 h6 9. ♘f3 ♙e6 with even chances, I did get some advantage, but the game ended in a long draw. There is plenty of room for inventiveness for White.) 5. ♙d3 g6 6. ♘h7 ♖h7 7. ♙g6+ ♗f7 8. g4 d5 9. g5 ♘g4 10. ♖f3 ♘e5 11. ♙f7+ ♘f7 12. g6 ♘e5 13. ♖h5 ♙g7 14. ♖h7 ♗f8 15. ♙h6 ♙h6 16. ♖h8# would you want to defend Black's game? Especially in a crucial title tournament?] 2... d6



3. d4

I like the idea of keeping the a1-h8 diagonal open. 3. ♙b2 e5 4. e3 ♘f6 5. c4 ♙e7 6. c5! opening up b3 for a nice Queen diagonal. 6... ♘c6 (6 ... e4 7. cd6 ♙d6 8. ♘d4 ♙b4 9.

3. ♙b2 e5 4. e3 ♘f6 5. c4 ♙e7 6. c5! opening up b3 for a nice Queen diagonal. 6... ♘c6 (6 ... e4 7. cd6 ♙d6 8. ♘d4 ♙b4 9.

♖a4+ ♘c6 10. ♘c6 and White wins a Bishop.) 7.cd6 cd6 (7 ... ♙d6 8. b5 ♘a5 9. ♘e5 winning a pawn.) 8. ♖b3 with excellent White play. 3... ♘f6 4. e3 g6 5. ♙b2 ♙g7



6. ♙c4

6. ♘bd2 d5 (6 ... ♘e4 7. ♙d3 d5 8. h4) 7. ♘e5 followed by 8. ♘c3 or the sharp 8. ♙e2 and 9. h4



6... d5

6 ... ♘e4 7. ♘bd2 7.0-0 c5 is sharp and risky. 8. bc5 (8. ♘bd2 ♘d2 9. ♖d2 a6 10. ♘g5 d5 11. ♙e2 c4 12. f3 h6 13. ♘h3 ♙e6 14. ♘f4 ♙f7 15. e4 e6)

8... ♖c5)

7... ♖d2 8. ♖d2

7. ♖b3 ♖bd7 8. ♖bd2 e6 9. c4 c6



10. 0-0 [10. a4 a5 (10 ... ♖e7 11. ♖a3) 11. b5] 10... ♖c7 11. ♖c1 0-0



12. cd5

[12. ♖e5 ♖e4 13. ♖c6 is devastating! 13... bc6

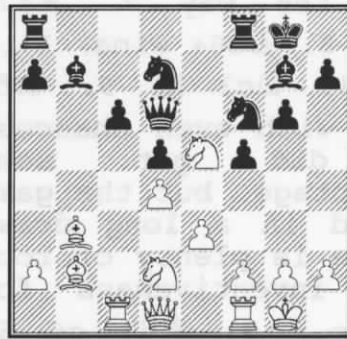
a) 13 ... ♖c6 14. cd5 ♖d6 15. de6 ♖df6 16. e7+ ;
b) 13 ... ♖d2 14. ♖e7+ ♖f7 15. cd5 ♖d6 16. ♖c8 ♖ac8 17. de6+)

14. cd5 ♖df6 15. ♖c6 ♖b7 16. ♖e4 ♖e4 17. ♖c2]

12... ed5 13. b5 ♖d6 14. bc6

♖e5 looks good here too.

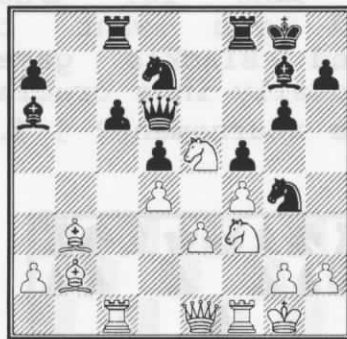
14... bc6 15. ♖e5 ♖b7



16. f4

f3 is better. White has the threat of e4 then.

16... ♖ac8 17. ♖df3 ♖g4 18. ♖e1 ♖a6



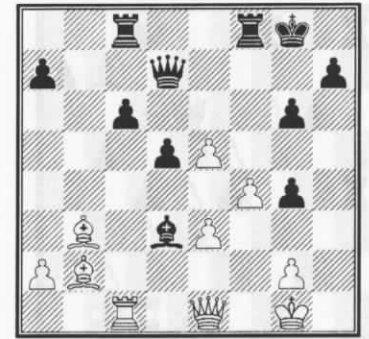
19. ♖d7

19. ♖a5 ♖f1 20. ♖a3 ♖e6

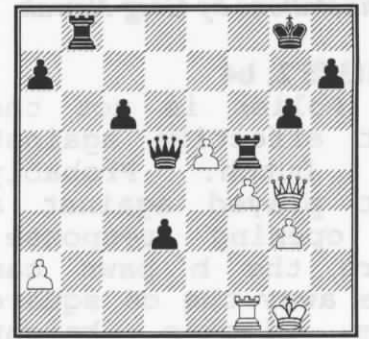
(20 ... ♖c7 21. ♖c7 ♖c7 22. ♖f1 ♖de5 23. fe5 ♖d8 24. ♖d6 ♖cc8 25. ♖c6 ♖c6 26. ♖d5+ ♖h8 27. ♖c6 with a good game for White.)

21. ♖g5 ♖e8 22. ♖c6 ♖c6 23. ♖d5+ ♖h8 24. ♖g8+ ♖g8 25. ♖ef7+ ♖f7 26. ♖f7# Philidor's Legacy, White wins 2 rooks down.

19... ♖d7 20. h3 ♖f1 21. hg4 fg4 22. ♖e5 ♖e5 23. de5 ♖d3



24. ♖a3 [how about 24. e6 ♖e6 25. ♖c3 ♖e3+ 26. ♖h1 ♖c7 27. ♖e1 White wins.] 24... ♖f5 25. ♖c2 ♖c2 26. ♖c2 ♖h5 27. ♖g3 ♖f5 28. ♖b2 ♖d3 29. ♖g4 ♖e3+ 30. ♖f2 ♖f5 31. ♖d6 d4 32. ♖c5 ♖c1+ 33. ♖f1 ♖c5 34. g3 d3+ 35. ♖g2 ♖d5+ 36. ♖g1 ♖b8

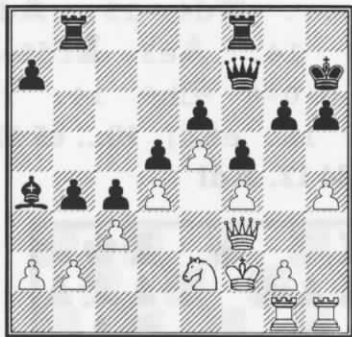


37. ♖d1 ♖h5 38. ♖f3 ♖d4+ 0:1

McCourt Dan - Jensen Michael
UCCC Championship
Modern Defense 1996

1. d4 g6 2. e4 ♖g7 3. ♖c3 c6 4. ♖c4 d6 5. ♖f3 e6 6. ♖ge2 ♖e7 7. ♖f4 0-0 8. ♖g3 d5 9. ♖b8 dc4 10. ♖c7 ♖d7 11. ♖d6 b5 12. h4 h6 13. ♖d1 ♖b7 14. f3

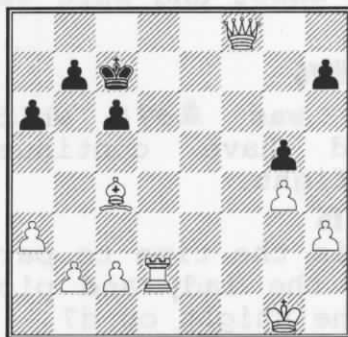
♠ad8 15. ♖c5 ♖a8 16. 0-0
 ♜fe8 17. ♜f2 ♜c8 18. e5 f5 19.
 ♜f4 ♜h7 20. ♜g3 ♜f7 21.
 ♜f2 ♖f8 22. ♖f8 ♜f8 23. ♜h1
 ♜e7 24. ♜ce2 ♜d5 25. ♜d5
 cd5 26. f4 b4 27. ♜f3 ♖c6 28.
 ♜dg1 ♖a4 29. c3 ♜b8



30. g4 ♖c2 31. ♜e3 ♖e4 32.
 ♜h3 fg4 33. ♜hg3 h5 34. ♜c1
 ♜e7 0:1

Jensen Carl - Cain Ryan
UCCC Championship
BIRD'S OPENING 1996

1. f4 d5 2. ♜f3 ♜c6 3. e3 ♖g4
 4. ♖b5 e6 5. h3 ♖h5 6. 0-0
 ♖d6 7. ♜e1 ♜f6 8. ♜c3 0-0 9.
 a3 d4 10. ♜d4 ♜d4 11. ed4 c6
 12. ♖c4 ♜b6 13. d3 ♜fe8 14.
 ♜a4 ♜c7 15. ♜c5 ♖c5 16. dc5
 e5 17. ♜h4 e4 18. g4 ♖g6 19.
 f5 ed3 20. fg6 ♜e2 21. gf7+
 ♜f8 22. ♖f4 ♜e7 23. ♖d6 d2
 24. ♖e7+ ♜e7 25. ♜f6 ♜d8 26.
 ♜d6 ♜d6 27. ♜e7+ ♜e7 28.
 cd6+ ♜d6 29. f8=♜+ ♜c7
 30. ♜d1 g5 31. ♜d2 a6



32. b4 ♜b6 33. ♜d7 ♜a7 34.
 ♜c8 h6 35. ♜b7# 1:0

McCourt Chris - Egger Bill
UCCC Championship
QUEEN'S PAWN GAME 1996

1. d4 d5 2. e4 de4 3. ♜c3 ♖f5
 4. g4 ♖g6 5. h4 h6 6. f3 c5 7.
 ♖e3 cd4 8. ♜d4 ♜d4 9. ♖d4
 ef3 10. 0-0-0 ♜f6 11. h5 ♖h7
 12. g5 hg5 13. ♜f3 e6 14. ♜g5
 ♜c6 15. ♖b5 ♜d7 16. ♜hf1
 ♖f5 17. ♖e3 ♖e7 18. ♜f7 ♜f7
 19. ♜d7 ♜b4 20. ♖c5 ♜c2 21.
 ♜e7+ ♜f6



22. ♜e4+ ♜e5 23. ♜c2 ♖e4+
 24. ♖d3 ♖d5 25. ♜f5# 1:0

Motta Paul - Runge Michael
Montana State Open
Blackmar-Diemer Gambit 1996

Annotations by Paul Motta

1. d4 ♜f6 2. ♜c3 e6 3. e4 d5
 My opponent begins to defend with the Classical French Defense

4. ♖e3
 Offering a pawn

4... de4 5. f3
 Offering another

5... ef3 6. ♜f3 a6

Now we have a variation of the Blackmar-Diemer Gambit, my favorite opening as White. a6 is not the usual move here, but it is not bad. Michael guards against my knight on c3, harassing his bishop after it goes to d6.

7. ♖d3 ♖d6 8. 0-0 ♜c6 9. ♜e2
 To make room for the Queen Rook.

9... h6
 This move can either be strong or weak. On one hand, it keeps my Queen Bishop from pinning the knight on f6. On the other hand, it creates a target/weakness for a King-side attack.

10. ♜ae1 0-0 11. ♖d2
 Not the best move here. ♜d2! would have really put the pressure on h6 and may have probably led to a quicker finish.

11... ♖d7 12. a3
 Guarding against an attack by the Knight on

c6 against my Bishop on d3. I need this bishop for the attack.

12... ♖e7

A mistake, Michael lets my Knight get to e5 while he tries to find a better spot for his Knight

13. ♘e5 ♘c6

As many of my past opponents know, you can not give up a tempo or two against me in the BDG and hope to survive. Most gambit openings involve giving up material in exchange for time/development, and with proper play this leads many times to successful attacks. This is the main advantage (and theory) behind a gambit. Here my opponent realizes that he made a mistake allowing my Knight to get to e5, and now goes back in an attempt to challenge and neutralize it. Too late, though. His best move was ♗f5, which would have kept him in the game. Now a combination begins.

14. ♖f6 ♖f6

14 ... gf6 15. ♖g4+ ♗h8 16. ♖h6 ♖g8 17. ♘f7#.

14 ... ♖e5 15. ♖e4 ♖d4+ 16. ♗h1 ♖e8

(16 ... g6 17. ♖g6+ fg6 18. ♖g6+ ♖g7 19. ♖h7+ ♗f7 20. ♖g6+)

17. ♖h7+ ♗f8 18. ♖h8+ ♗e7 19. ♖g7 ♖f6 20. ♘d5+ ♗d6 21. ♘f6

15. ♖e4 ♖f5 16. ♖h4

Not the best move here.

More exact and sure was ♘d7.

16... ♖f6

Best was ♖e7! which would have continued the fight.

17. ♖f6

Now is the time to part with the lady and pick up the knight on d7

17... gf6 18. ♘d7 ♖fd8 19. ♘f6+

My opponent is in trouble. Where does the King go?

19... ♗f8

♗g7 or ♗h8 would have prolonged the fight.

20. ♖h6+ ♗e7 21. ♘cd5# 1:0

World Championship Games

Karpov Anatoly (RUS) - Kamsky Gata (USA) Ch World (match) Elista (Russia) D98 GRUNFELD def. 1996

1. d4 ♘f6 2. c4 g6 3. ♘c3 d5 4. ♘f3 ♖g7 5. ♖b3 dc4 6. ♖c4 0-0 7. e4 ♘c6 8. ♖e2 ♖g4 9. ♖e3

9. d5 - Piket - Leko, Groningen 1995

[9. d5 ♖f3 10. gf3 ♘e5 11. ♖b3 c6 12. f4 ♘ed7 13. ♖e3 ♘b6 14. ♖d1 ♖c7 15. a4! ♖ad8 16. a5 ♘c8 17. ♖a4 ♖h6 18. dc6 bc6 19. e5±]

9... ♖f3 10. ♖f3

10. gf e5 11. de ♘e5

12. ♖d4 ♘fd7 - Lputian - Mirumian, Erevan 1995

10. gf e5 11. de ♘e5

12. ♖d4 ♖d4 - M.Gurevich - Romanishin, Lvov 1987

[10. gf3 e5 11. de5 ♘e5 12. ♖d4 ♘fd7?!

(12 ... ♖d4 13. ♖d4 ♘c6! 14. ♖e3 ♖fd8=)

13. 0-0-0 ♘b6 14. f4 ♘ed7 15. e5±] **10... e5 11. d5 ♘d4 12. ♖d1**



12... b5!?

a novelty 12... c6 - Corral Blanco - Malishauskas, Oviedo 1993

[12 ... c6 13. dc6 ♖c8 14. 0-0 ♖c6 15. ♖a4 ♖a6 16. ♖c4 ♖c6=] **13. ♘b5 ♘e4 14. 0-0 a6** [14 ...

♘d6 15. ♘d6 cd6 16. ♖d4 ♖c8!∞ Makarychev]

15. ♘c3 ♘d6 [15 ... ♘c3!? 16. bc3 ♘f5= Kramnik] **16. ♖d3 ♖h4?!**

[16 ... ♖b8 17. ♖b1 ♖b4∞ A. Kalinin] **17. g3! ♖h3 18. ♖d4! ed4 19. ♘e2 ♖f5 20. ♘f4 ♖fb8 21. ♖f5 ♘f5 22. ♘d3± ♖h6 23. ♖e1 a5 24. ♖g4 ♘d6 25. ♖e2 a4 26. a3 ♖a5 27. ♖c2 ♖d5 28. ♖c7 ♖a5 29. ♖f3 ♖g5 30. ♖d1 ♖c8 31. ♖c8+ ♘c8 32. h4 ♖f6 33.**

♖c1± ♜d6 34. ♔f1 ♙e7 35.
 ♔e2 ♚f8 36. ♖c7 ♙f6 37. ♔d2
 h5 38. ♔e2 ♜f5? 39. ♖c4 ♜d6
 40. ♖b4 ♖a6 41. ♜c5 ♖a7 42.
 ♔d3 ♖c7 43. ♜a4# ♖c1 44.
 ♜b6 ♙g7 45. a4 ♖a1 46.
 ♜d7+! ♔e8 47. ♜c5 ♔e7 48.
 ♔c2 ♖f1 49. ♜d3 ♖a1 50. ♔b3
 f5 51. ♖b6 ♙h6 52. ♙d5 g5 53.
 ♖a6 gh4 54. gh4 ♖d1 55. ♙c4
 ♖h1 56. a5 ♖h4 57. ♙d5 1:0

**Kamsky Gata (USA) -
 Karpov Anatoly (RUS)
 Ch World (match)
 Elista (Russia)**

B14 CARO-KANN 1996

1. e4 c6 2. d4 d5 3. ed5 cd5 4.
 c4 ♜f6 5. ♜c3 e6 6. ♜f3 ♙b4
 7. cd5 ♜d5 8. ♙d2 ♜c6 9.
 ♙d3 ♙e7 10. 0-0 0-0 11. ♖e2

11... a3 - Orlov -
 Epishin, St. Petersburg
 1996
 [11. a3 ♙f6 12. ♖e2
 ♜de7 13. ♖e4 ♜g6 14.
 ♙e3 ♙d7 15. ♖ad1 ♖a5
 16. ♖g4 ♜ce7 17. ♜e4
 ♖fd8! =] 11... ♜f6

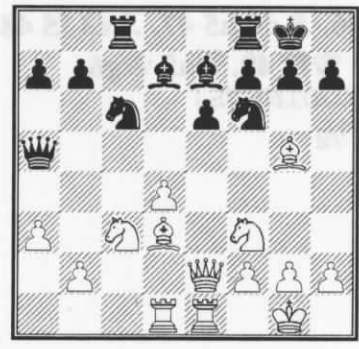
11... ♙f6 - Hebden -
 Arkell, Hastings 1995
 11... ♜b4 -
 [11 ... ♙f6 12. ♖ad1
 b6 13. ♖e4 g6 14. ♙h6
 ♙g7 15. ♙g7 ♔g7 16.
 ♜d5± ; 11 ... ♜db4
 12. ♙b1 g6 13. ♖d1 b6
 14. ♙e4 ♙a6 15. ♖e3
 ♖c8 16. a3 ♜d5 17.
 ♖h6±] 12. ♜e4 ♙d7

12... ♖b6! - Kamsky -

Karpov, Elista (m/4)
 1996
 [12 ... ♖b6! 13. a3
 ♙d7 14. ♖fd1 ♖ad8 15.
 ♜f6+ ♙f6= ; 12 ...
 ♜d4?! 13. ♜d4 ♖d4 14.
 ♙c3 ♖d8 (14 ... ♖d5
 15. ♜f6+ ♙f6 16. ♙f6
 gf6 17. ♖fd1↑) 15.
 ♜f6+ ♙f6 16. ♖ad1±
 ♖e7 17. ♖e4 g6 18.
 ♙b4±] 13. ♖ad1 ♖c8?!
 a novelty 13... ♖b6 -
 Mortensen - Danielsen,
 Ringsted 1995

[13 ... ♖b6 14. ♜f6+
 ♙f6 15. ♖e4 g6 16.
 ♙h6 ♙g7 17. ♙g7 ♔g7
 18. h4 ♖ad8 19. h5 ♜e7
 20. ♖fe1±] 14. ♖fe1 ♜d5?!
 15. ♜c3! ♜f6

△ ♜b4
 16. a3! ♖c7 17. ♙g5 ♖a5? [17
 ... ♖fe8 18. ♙b1±
 ♖cd8? (18 ... ♜a5 19.
 ♜e5 ♜c4 20. ♖c1±) 19.
 ♖c2! g6 20. d5! ♜d5
 (a) 20 ... ed5 21. ♖e7
 ♜e7 22. ♙f6+- ; b) 20
 ... ♜a5 21. d6+-) 21.
 ♜d5 ed5 22. ♙e7+-]



18. d5! ed5 19. ♙f6 ♙f6 20.
 ♙h7+! [20. ♜d5 ♖fe8!
 (20 ... ♙d8? 21. b4!
 ♖a4 22. ♙b5 ♖a3 23.

♖a1 ♖b3 24. ♙c4+-)
 21. ♜f6+ gf6 22.
 ♖d2±] 20... ♔h7 21. ♖d5
 ♙c3 [21 ... ♖c7 22.
 ♖d3+ ♔g8 23. ♖d7±] 22.
 ♖a5 ♙a5 23. b4 ♔g8 24. ba5
 ♙g4 25. a6! ba6 26. ♖e4 ♙f3
 27. ♖f3 ♖fe8 28. ♖a1 ♖e6 29.
 h3± ♖d8 30. ♖c3 ♖dd6 31.
 ♖b1 ♖d7 32. ♖c4 a5 33. ♖b5
 ♖d1+ 34. ♔h2 ♖d2 35. ♖f5
 ♖d4 36. ♖c3 ♖dd6 37. ♖c5
 ♖f6 38. ♖c4 ♖fe6 39. ♖c5 ♖f6
 40. ♖e3 ♖fe6 41. ♖g3 ♖g6 42.
 ♖b3 ♖gf6 43. ♖b7 ♖fe6 44.
 ♖c7! ♖f6 45. f4! g6 46. f5 gf5
 47. ♖f5 ♖de6 48. ♖h5 ♖h6 49.
 ♖g3+ ♔f8 50. ♖d5 ♖hg6 51.
 ♖f2 ♖gf6 52. ♖b2 ♔e7 53.
 ♖h5 ♖h6 54. ♖b5 ♖hf6 55.
 ♖c3! ♔f8 56. ♖h5 ♖h6 57. ♖f5
 ♖hg6 58. ♖f3! ♖g7 59. ♖f4
 ♔g8 60. ♖c7 [60. ♖f7 ♖f7
 61. ♖g4+ ♔f8 62.
 ♖e6+-] 60... ♔f8 61. ♖c8+
 ♔e7 62. ♖d5 ♔f6 63. ♖h8 ♖e4
 64. ♖h5 ♜e7 65. ♖h7
 [K. KODINETS]
 1:0

**Karpov Anatoly (RUS) -
 Kamsky Gata (USA)
 Ch World (match)
 Elista (Russia)**

**E15 QUEEN'S INDIAN def.
 1996**

1. d4 ♜f6 2. c4 e6 3. ♜f3 b6 4.
 g3 ♙a6 5. b3 ♙b4+ 6. ♙d2
 ♙e7 7. ♙g2 c6 8. ♙c3 d5 9.
 ♜e5 ♜fd7 10. ♜d7 ♜d7 11.
 ♜d2 0-0 12. 0-0 ♖b8

12... ♖c8 13. ♔e1 -
 Granda Zuniga -
 Zarnicki, Buenos Aires
 1996 12... ♖c8 13. e4 -
 Novikov - Ravi,
 Calcutta 1996

[12 ... ♖c8 13. e4 (13.
 ♔e1 f5 14. a4 ♘d6 15.
 a5 b5 16. c5 ♙b8 17.
 ♗f3 ♕e7 18. b4 ♖ce8=)
 13... c5 14. ed5 ed5
 15. dc5 dc4 16. c6 ♗b8
 17. ♗c4 ♕d1 18. ♖fd1
 ♙c4 19. bc4 ♗c6 20.
 ♖d7 ♙c5±] 13. ♔e1 b5 14.
 c5 e5

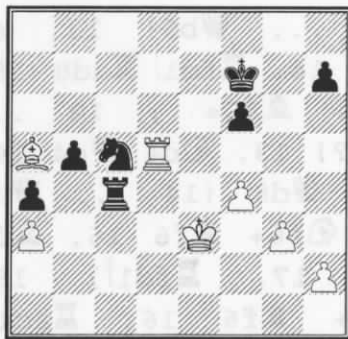
a novelty 14... b4 -
 Gagarin - Batsanin,
 Vladivostok 1995

[14 ... b4 15. ♙b2 e5
 16. de5 ♙c5 17. ♖c1
 ♕b6 18. e3 ♙e7 19.
 ♗f3±] 15. de5 ♗c5 16. a3
 ♗e6 17. b4 d4 18. ♙b2 c5 19.
 bc5 ♙c5 20. ♗e4 ♙e7



21. e3! de3 22. ♔e3 ♕d1+ 23.
 ♖d1 ♙b7 24. ♖d7 ♙e4 [24
 ... ♙d8 25. ♗d6 ♙g2
 26. ♕g2±] 25. ♔e7 [25.
 ♙e4!? ♙c5 26. ♖e2±]
 25... ♙g2 26. ♕g2 a5 27. ♖a7
 ♖a8 28. ♖a8 ♖a8 29. ♖b3 ♖b8
 30. ♙c3 a4 31. ♖b1 ♖c8 32.
 ♙a5 ♖c5 33. f4 f6 [33 ...
 g5!?] 34. ef6 gf6 35. ♖d1
 ♕f7 36. ♖d7+ ♕g6 37. ♕f3

♖c4 38. ♕e3 ♗c5 39. ♖d5 ♕f7



40. ♙b6 [40. f5! ♔e4+
 41. ♕f3 ♖c4 (41 ...
 ♔e5? 42. ♔e5 fe5 43.
 g4±) 42. ♙b6 (42. ♙b4
 ♗a6! 43. ♖b5 ♗b4 44.
 ♖b7+ ♕g8 45. ab4 a3
 46. b5 a2 47. ♖a7 ♖b4)
 42... ♖c3+ 43. ♕g4
 ♗e4 44. ♖b5 ♖a3 (44
 ... ♖b3 45. ♖b3 ab3
 46. ♙d4 ♗c5 47. ♕h5
 ♕g7 (47 ... ♗a4? 48.
 ♕h6+-) 48. g4 h6 49.
 h4 ♗e4 50. g5 hg5 51.
 hg5 ♗g5 52. a4 ♗e4 53.
 a5±) 45. ♖b4 ♖b3 46.
 ♔e4 ♖b6 47. ♖a4±] 40...
 ♖c3+ 41. ♕d4 ♖c4+ 42. ♕e3
 ♖c3+ 43. ♕e2 [43. ♕d4=]
 43... ♗e4 44. ♖b5 ♖a3 45. ♖a5
 ♕g6 46. ♙d4 h5 47. ♙e3 f5 48.
 ♖a6+ ♕f7 49. ♖a5 ♕g6
 [K. KODINETS]

1/2:1/2

Kamsky Gata (USA) -
 Karpov Anatoly (RUS)
 Ch World (match)
 Elista (Russia)

B14 CARO-KANN 1996

1. e4 c6 2. d4 d5 3. ed5 cd5 4.
 c4 ♗f6 5. ♗c3 e6 6. ♗f3 ♙b4
 7. cd5 ♗d5 8. ♙d2 ♗c6 9.
 ♙d3 0-0 10. 0-0 ♙e7 11. ♕e2
 ♗f6 12. ♗e4

12. ♙e3 - Sermek -
 Gerber, Cannes 1995

[12. ♙e3!? ♗b4 13.
 ♙c4 a6 14. a3 ♗bd5 15.
 ♗e5 ♙d7±]



12... ♕b6!

a novelty 12... ♗e4 -
 Kveinis - Hellsten,
 Dresden 1994 12... ♙d7
 - Kamsky - Karpov,
 Elista (m/2) 1996

[12 ... ♗e4 13. ♕e4 f5
 14. ♕e3 ♙f6 15. ♙c3
 ♕d6 16. ♖fe1 ♗e7 17.
 ♗e5 ♗d5 18. ♕d2 ♙d7
 19. ♙c4 ♙c6∞ ; 12 ...
 ♙d7 13. ♖ad1 ♖c8?! 14.
 ♖fe1 ♗d5 15. ♗c3 ♗f6
 16. a3±] 13. a3 ♙d7 14.
 ♖fd1 [14. ♙e3!?] 14...
 ♖ad8= 15. ♗f6+?! ♙f6 16.

♖e4 g6 17. ♙e3 ♜e7! 18. ♜e5
[18. d5? ♖b2] 18... ♜f5
19. ♜c4?! ♖a6

△ 20. ♜e5 ♙b5
20. a4 ♙c6 21. ♖f4 ♙d5 22.
♜e5 ♖b6 23. ♙f5 [23.
♞d2!?] 23... ef5 24. ♞d2
♙g7 25. h4 ♞fe8 26. ♖g3 ♞c8
27. ♜d7 □ [27. h5] 27...
♖c6 28. ♜c5 b6 29. ♜d3 ♖d7
30. a5 ♞e4! 31. ♜f4 b5 32.
♞dd1 [32. h5] 32... ♙c4 33.
♞ac1 h6! 34. ♞c3 b4! 35.
♞c2 ♞c6 36. ♞dc1 ♙b5 37.
♚h2 ♚h7 38. ♞c6 ♙c6 39.
♞c4?! ♙f8 40. ♜d3 ♖e6! 41.
d5 ♙d5 42. ♞e4 ♙e4 43. ♙a7?
□ [43. ♜c5] 43... ♙d6 44.
♜f4 □ [44. f4] 44... ♖e5
45. ♜h3 [45. ♙e3 ♖b2-+]
45... ♖e7
[K. KODINETS]

0:1

Karpov Anatoly (RUS) -
Kamsky Gata (USA)
Ch World (match)
Elista (Russia)

D97 GRUNFELD def. 1996

1. d4 ♜f6 2. c4 g6 3. ♜c3 d5 4.
♜f3 ♙g7 5. ♖b3 dc4 6. ♖c4
0-0 7. e4 a6 8. e5 b5 9. ♖b3
♜fd7

9... ♜g4 - Malaniuk -
Jukic, Pula 1996
[9 ... ♜g4 10. h3 ♜h6
11. ♙d3 ♜f5 12. ♙e4
c6 13. ♜e2 e6 14.
0-0±] 10. e6

10. ♙e3 - Arnold -
Ladanyi, Budapest 1996

10. h4 - Lputian -
Lutz, Rimavska Sobota
1991

[10. ♙e3 ♜b6 11. a4
♙e6 12. ♖d1 ba4 13.
♜a4 ♜a4 14. ♖a4± ;
10. h4 c5 11. e6 cd4!?
12. ed7 ♙b7 13. ♜e2 e5
14. h5 d3 15. hg6 hg6
16. ♜g5 e4 17. ♜e6!
fe6 18. ♖e6+ ♞f7 19.
♖e8+ ♞f8 20. ♖e6+=]
10... fe6 11. ♖e6+ ♚h8 12.
♖e4

12. ♜g5?! - Urvalov -
Nadanian, corr. 1989

[12. ♜g5 ♜e5 13. ♖d5
♖d5 14. ♜d5 ♜ec6 15.
♜c7 ♞a7 16. ♜ce6
♜d4! 17.] 12... ♜b6 13. ♖h4
♜c6 14. ♙d3?!

a novelty 14. ♙h6 -
Bronstein - Pein,
Wrexham 1995

[14. ♙h6 e5 15. ♖d8
♞d8 16. ♙g7+ ♚g7 17.
♜e5 ♜d4 18. 0-0-0 ♙b7
19. f3 c5 1/2 : 1/2]



14... ♞f3! 15. gf3 [15. ♙g6?
♖g8 16. gf3 ♙f6] 15...
♜d4 16. ♙e4 ♙f5! 17. ♙e3 c5
[17 ... ♜c2+! 18. ♙c2
♙c2↑] 18. ♙d4 [18.
0-0-0! 19. ♙a8 ♜c2+
19. ♚f1 ♖a8 20. ♚g2
♜a1 21. ♞a1∞] 18... cd4

19. ♞d1 ♞c8

19... ♖g8!? - I.
Zaitsev, A. Roshal

[19 ... ♖g8!? 20. ♙a8
dc3 21. ♙e4 ♙f6 22.
♖g3 ♙e4 (22 ... cb2
23. ♙f5 gf5 24. ♖g8+
♚g8 25. ♚d2∞) 23. fe4
cb2 24. e5! ♖d5! (24
... ♖e6 25. f4 ♖a2 26.
0-0 ♙g7 27. f5!±) 25.
♞d5 b1=♖+ 26. ♞d1
♖e4+ 27. ♖e3 (27.
♚d2? ♜c4+ 28. ♚c1
♙e5 29. ♖d3 ♖f4+ 30.
♞d2 ♚g7) 27... ♖h1+
28. ♚e2 ♖c6 29. ♞d8+
♚g7 30. ef6+ ef6= K.
KODINETS] 20. ♞g1 ♙f6 21.
♖h6 ♙g7 22. ♖h4 ♙f6 [22
... ♜c4 23. ♞g6?! (a)
23. ♜d5 e6 24. ♜e7
♙f8 25. ♖f6+ ♙g7= ;
b) 23. ♙f5 gf5 24. ♞g7
♚g7 25. ♞d4 ♖c7 26.
♖g5+ ♚h8 27. ♖f5 ♜b2
28. ♚f1∞) 23... ♙g6
24. ♙g6 ♖g8 25. ♜d5
♙f6 26. ♜f6 ♖g6 27.
♜d5 ♖e6+ 28. ♖e4
♖e4+ 29. fe4 ♜b2] 23.
♖h6 ♙g7 [23 ... ♜c4 24.
♜d5 ♙g7 25. ♖h4∞]
[K. KODINETS]

1/2:1/2

**Kamsky Gata (USA) -
Karpov Anatoly (RUS)
Ch World (match)
Elista (Russia)**

C43 RUSSIAN def. 1996

1. e4 e5 2. ♘f3 ♘f6 3. d4 ♘e4
4. ♙d3 d5 5. ♘e5 ♘d7 6. ♘d7
♙d7 7. 0-0 ♙d6 8. ♘c3
8. c4 - J. Polgar -
Yusupov, Madrid 1995
[8. c4 c6 9. cd5 cd5
10. ♖h5 0-0 11. ♖d5
♙c6 12. ♖h5 g6 13.
♖h3 ♖b6 14. ♘c3 ♖d4
15. ♙e4 ♙e4 16. ♖h4
f5 17. ♘b5 ♖f6=] 8...
♖h4

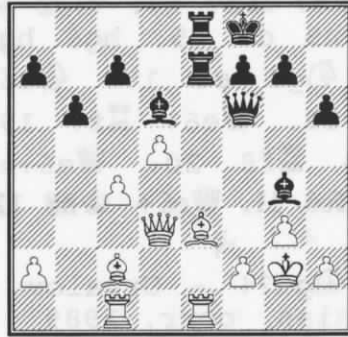
a novelty 8... ♘c3 -
Kharlov - P. Nielsen,
Kemerovo 1995

[8 ... ♘c3 9. bc3 0-0
10. ♖h5 f5 11. ♖b1 b6
12. ♖e1 ♖f6 13. ♖f3
♙h8 14. ♙f4 ♖ae8 15.
♖e8 ♖e8 16. ♖d5 ♙f4
17. ♖d7 ♖f8 18. ♖e1
♙d6±] 9. g3 ♘c3 10. bc3
♖g4 11. ♖e1+ ♙d8

11... ♙f8 - Magem
Badals - Illescas,
Pamplona 1996

[11 ... ♙f8 12. ♙e2
♖f5 13. c4 dc4 14. ♙c4
h5 15. h4 ♖e8 16. ♖e8+
♙e8 17. ♙e3 b5 18.
♖d3 ♖d3 19. ♙d3±] 12.
♙e2 ♖f5 13. ♖b1 b6 14. c4 dc4
15. ♙c4 ♖e8 16. ♙e3 [16.
♖e8+ ♙e8 17. ♙d3±]
16... ♙c6 17. d5 ♙d7 18. ♙f1
h6 19. c4± ♖e7 20. ♙d3 [20.

♙d4 ♖e1 21. ♖e1±] 20...
♖f6 21. ♙g2?! [21. ♖c2
♙h3 22. ♙e4± △ c5]
21... ♙e8 22. ♙c2? ♖c3! 23.
♙b3? ♙f8 24. ♖c1 ♖f6 25.
♙c2 ♖ae8 26. ♖d3 ♙g4



27. ♙d2?? [27. ♖h7 g5+ ;
27. f4 ♖b2?! (27 ...
♙f5! 28. ♖f5 ♖f5 29.
♙f5 ♖e3 30. ♖e3 ♖e3+)
28. ♙d4! ♖e2+ 29. ♖e2
♖e2+ 30. ♖e2 ♖c1 31.
♙g7+ ♙g7 32. ♖g4+±]
27... ♖e2! 28. ♖e2 ♖e2 29. ♖f1
♖d2
[K. KODINETS]
[30. ♖d2 ♖f3+ 31. ♙g1
♙h3 32. ♙e4 ♖e4 33.
f3 ♖f5-+] 0:1

**Karpov Anatoly (RUS) -
Kamsky Gata (USA)
Ch World (match)
Elista (Russia)**

E97

**KINGS' INDIAN def. C
LASSICAL var. 1996**

1. d4 ♘f6 2. c4 g6 3. ♘c3 ♙g7
4. e4 d6 5. ♘f3 0-0 6. ♙e2 e5
7. 0-0 ♘c6 8. d5 ♘e7 9. b4
♘h5 10. ♖e1 h6

10... f5 - Dautov -
Kindermann, Nussloch
1996

[10 ... f5 11. ♘g5 ♘f6
12. ♙f3 c6 13. ♙b2 h6
14. ♘e6 ♙e6 15. de6
♘e4 16. ♘e4 fe4 17.
♖e4 ♘f5 18. b5 ♖c8 19.
♖e2 ♖e8 20. bc6 bc6
21. c5 d5 22. ♙e5 ♙e5
23. ♖e5 ♖f6 24. ♖e1
1/2 : 1/2] 11. ♘d2 ♘f4
12. ♙f1 a5 13. ba5 ♖a5 14.
♘b3 ♖a8 15. c5 f5 16. cd6 cd6
17. ♘d2 g5 18. ♖b1 g4 19.
♖b3 fe4 20. ♘de4 ♙h8 21.
♙e3 ♘f5 22. ♙b6 ♖e7 23.
♖b4 ♖f7 24. a4 ♙f8 25. ♙e3
♘h5 26. ♖bc1 ♘f6 27. ♙b6 h5
28. ♘f6 ♖f6 29. ♘e4 ♖g6 30.
a5 ♘g7 31. ♙b5 ♙f5 32. ♘g3
♙c8 33. ♖c3 h4 34. ♙d3 ♘f5
35. ♘f5 ♙f5 36. ♙f5 ♖f5 37.
♖c4 ♖g7 38. ♖b1 ♖h5 39.
♖d1 h3 40. ♖ee4 hg2 41. ♖g4
♖h7 42. h4 ♙e7 43. f3 ♖g8 44.
♙f2 ♖hg7 45. ♖e2 ♙d8 46.
♙e1 ♖f7 47. ♖d3 ♖h5 48.
♖e4 ♖h6 49. ♖f5 ♙a5 50.
♖g7 ♙b6+ 51. ♙g2 ♖g7+ 52.
♖g4 ♖e7 53. ♖h5+ ♖h7 54.
♖g8+ ♙g8 55. ♖e8+ ♙g7 56.
♖e7+ ♙h8 57. ♖d6 ♖g7+ 58.
♙g3 ♙c7 59. ♖e6 ♙h7 60. d6
♙d8 61. ♖f5+ ♙h6 62. ♙h3
♖f6 63. ♖f6+ ♙f6 64. ♙g4 b5
65. ♙f5 ♙d8 66. ♙e5 ♙g6 67.
♙d5 b4 68. ♙c4 ♙a5 69. ♙b3
♙f5 70. ♙a4 ♙e6 71. h5 1:0

Kamsky Gata (USA) -
Karpov Anatoly (RUS)
Ch World (match)
Elista (Russia)

B17 CARO-KANN 1996

1. e4 c6 2. d4 d5 3. ♘d2 de4 4. ♘e4 ♘d7 5. ♘g5 ♘gf6 6. ♙d3 e6 7. ♘1f3 ♙d6 8. ♚e2 h6 9. ♘e4 ♘e4 10. ♚e4 ♘f6 11. ♚e2 ♚c7 12. ♙d2 b6 13. 0-0-0 ♙b7 14. ♘e5 c5 15. ♙b5+ ♚e7 16. dc5 ♚c5 17. a3 ♚c7 18. ♙f4 ♘d5 19. ♙g3 ♙hd8 20. ♙d4 ♚f8 21. ♚b1 a6 22. ♙c4 ♚e7 23. ♘c6 ♙c6 24. ♙c6 ♙a7 25. ♙d5 ed5 26. ♙d6 ♚d6 27. ♙d4 b5 28. ♚d3 ♚g8 29. g3 ♚e6 30. ♙d1 ♙ad7 31. h4 ♙d6 32. ♙d2 ♚e1+ 33. ♚a2 ♚e7 34. ♚f3 ♚e6 35. ♙e2 ♚c8 36. ♚d3 ♙c6 37. ♚b1 ♙e6 38. ♙e3 ♚c6 39. ♚d2 ♙e3 40. ♚e3 ♚e6 41. ♚d2 ♙d6 42. g4 ♚f6 43. g5 ♚f3 44. ♚a2 ♚f5 45. c3 ♚f3 46. ♙f4 ♚h3 47. gh6 ♚e6 48. ♚d4 ♚h6 49. ♙f5 ♚e6 50. ♙e5 ♚d7 51. ♚a1 f6 52. ♙e3 ♙c6 53. h5 ♙c4 54. ♚b6 d4 55. ♙d3 ♚f5 56. ♙d4 ♙d4 57. cd4 ♚f2 58. ♚e6+ ♚f8 59. ♚d6+ ♚f7 60. ♚d7+ ♚f8 61. ♚d6+ 1/2:1/2

Karpov Anatoly (RUS) -
Kamsky Gata (USA)
Ch World (match)
Elista (Russia)

D97 GRUNFELD def. 1996

1. d4 ♘f6 2. c4 g6 3. ♘c3 d5 4. ♘f3 ♙g7 5. ♚b3 dc4 6. ♚c4 0-0 7. e4 a6 8. e5 b5 9. ♚b3 ♘fd7 10. ♙e3 c5 11. e6 c4 12. ef7+ ♙f7 13. ♚d1 ♘b6 14. ♘e5 ♙f8 15. a4 b4 16. a5 bc3 17. ab6 cb2 18. ♙c4+ ♚h8 19. ♙b1 ♚b6 20. ♚d2 ♘d7 21. ♙b2 ♘e5 22. ♙b6 ♘c4 23. ♚b4 ♘b6 24. ♚b6 a5 25. 0-0 a4 26. ♙a1 ♙f5 27. h4 e6 28. ♙f4 ♙e4 29. ♙d6 ♙fc8 30. ♚b5 ♙c6 31. ♚b4 ♚g8 32. ♙a3 ♙a6 33. ♚c4 ♙ca8 34. ♚e6+ ♚h8 35. ♙e5 ♙e5 36. ♚e5+ ♚g8 37. h5 ♙e8 38. h6 ♙6a7 39. d5 ♙b7 40. d6 ♙d8 41. ♙f3 1:0

Montana State Open

1	Nowak, Greg	2189	W12	D21	W17	W3	D2	4.0
2	Motta, Paul	2036	W22	W13	D9	W8	D1	4.0
3	Mayer, Zygmund	2004	W24	W20	W10	L1	W14	4.0
4	Smith, Steve	2130	W11	D16	D21	W9	W13	4.0
5	Johansson, Jan	2075	W25	D6	D16	D10	W19	3.5
6	Long, Michael J.	1793	W27	D5	L8	W29	W18	3.5
7	Smith, Keven	1408	D35	L17	W26	W20	W16	3.5
8	Jensen, J. Michael	2015	D14	W26	W6	L2	D11	3.0
9	Carpenter, Romie G.	1873	W33	W23	D2	L4	D15	3.0
10	Duke, David A.	1798	W34	W18	L3	D5	H	3.0
11	Mc Broom, William	1676	L4	W28	W32	D16	D8	3.0
12	Bodie, Brad	1676	L1	L33	W27	W28	W23	3.0
13	Runge, Michael P.	1716	W36	L2	W33	W21	L4	3.0
14	Brownlee, Keith	1585	D8	W31	H	W17	L3	3.0
15	Martin, Robert A.	1664	L18	W34	D23	W30	D9	3.0
16	Shughart, David W.	1800	W28	D4	D5	D11	L7	2.5
17	Skovron, James J.	1899	D29	W7	L1	L14	W26	2.5
18	Stubberud, Kip	2071	W15	L10	W29	D19	L6	2.5
19	Erickson, Ron	1754	L26	W30	W22	D18	L5	2.5
20	Hansen, Douglas	1709	X37	L3	D24	L7	W29	2.5
21	Brennan, Leslie	1818	W32	D1	D4	L13	H	2.5
22	Scarff, Steve	1600	L2	W27	L19	W32	D25	2.5
23	Doulas, Nick	1165	F	L9	D15	W25	L12	2.5
24	Ammond, Jonni	1557	L3	W36	D20	L23	W30	2.5
25	Bailey, Brian	1668	L5	L32	W34	W33	D22	2.5
26	Spaulding, J.B.	UNR	W19	L8	L7	W31	L17	2.0
27	Drake, Melvin P.	1262	L6	L22	L12	W36	W32	2.0
28	Zedekar, Stanley	1373	L16	L11	W36	L12	W34	2.0
29	Mayer, Eriel	1545	D17	W35	L18	L6	L20	1.5
30	Amundson, Hal	1233	H	L19	W31	L15	L24	1.5
31	Martinez, Michael	1367	H	L14	L30	L26	W36	1.5
32	Furdell, William	1393	L21	W25	L11	L22	L27	1.0
33	Rayburn, John	1521	L9	W12	L13	L25	U	1.0
34	Shughart, Max	1210	L10	L15	L25	B	L28	1.0
35	McClure, Jim A.	1851	D7	L29	U	U	U	.5
36	Ferris, Anthony	UNR	L13	L24	L28	L27	L31	.0
37	Jenkins, Kris	UNR	F20	U	U	U	U	.0

UCCC Closed Club Championship and Satellite

1	Shughart, David W.	1822	X	0	1	½	0	½	2
2	Mc Court Daniel J.	1727	1	X	0	½	0	1	2.5
3	Erickson, Ron	1756	0	10	X	½	0	½	2
4	Mc Broom, William H.	1664	½	½	½	X	½	½	2.5
5	Jensen, Michael J.	2030	1	1	1	½	X	1	4.5
6	Moore, Sherwood	1656	½	0	½	½	0	X	1.5
1	Egger, Bill	1600est	X	0	1	1	0	F	3
2	Jensen, Carl	1674	1	X	1	1	1	F	5
3	Cain, Ryan	1273	0	0	X	1	0	F	2
4	Shughart, Max	1210est	0	0	0	X	0	F	1
5	McCourt, Chris	1200est	1	0	1	1	X	F	4

Upcoming Events

UCCC Midsummer Open.....July 13th and 14th 1996

Room 362, Social Science Building, University of Montana, Missoula, MT. 5 Round Swiss. Time control: G/2, Rounds: 9am, 1:30pm, 6:30pm, 8:30am, 1pm. Registration: 8-8:30am July 13th. EF \$15 if received by 7/11, \$25 at site. \$\$G 140 - 1st \$50 + trophy, 2nd trophy, <1900 \$40 + plaque, <1500 \$20 + plaque, Biggest Upset = plaque (both players must have non-provisional ratings). MCA membership required (\$6), other states OK. No smoking, No computers, Wheelchair accessible. Cancellations received by 8am 7/13 (by calling 406 243-2843 and leave message) entitled to full refund. For advance registration or info, contact: William H. McBroom, 2321 Raymond Avenue. Missoula, MT 59802 (406) 728-4654 (No phone entries)

Montana State Action - Speed - Quick Chess Championship August 10 & 11 1996

4415 Rimrock Road, Billings. MT **Action Tournament** Registration 9-9:45 am Aug 10th. 7 rounds depending on entries. 1st round starts at 10 am.

Speed Tournament Saturday Evening following the Action Tournament

Quick Tournament 5 rounds, 1st round starts 9 am on Sunday the 11th.

Entry Fee is \$5 for each tournament. \$15.00 for a fun weekend and a chance at three State Championships!!

For pre-registration contact: Zygmund Mayer, 4415 Rimrock Road, Billings, MT (406) 655-0907

Montana State Closed.....September 21st and 22nd 1996

War Bonnet Inn, Butte, MT. Ten Player Round-Robin format. Time control: 40/2, 20/1. Rounds: 9:30am, 2pm, 7pm, 9am, 2pm. TD: Sherwood Moore. Qualifiers are asked to be present at 9am Saturday for the drawing of lots for player numbers.

The John Barto Memorial Open.....September 21st and 22nd 1996

Held in conjunction with the MT State Closed

5 -SS, G/2. War Bonnet Inn, 2100 Cornell, Butte, MT 59701. EF: \$20 by 9/19, \$25 at site. Trophies: 1st-2nd, Best U1900, U1700, U1500, U1300. Reg. 8-9 Rds. 9:30-2-7, 9-2. State memb req'd \$6, OSA. HR: \$45 sgl/dbl, 1-800-443-1806. Special room rates if reserved by 9/6/96, specify it is for the chess tournament. Ent: Sherwood Moore, 453 Minnesota, Missoula, MT 59802. (406) 728-1695. NS.NC.W