



DODGE NEON TWIN CAM (REAR EXHAUST)

New Improved Cam Core Technology

Description	Part Number	Advertised Duration @ .050"		Duration @ .050"		Lobe Lift		Gross Lift 1.75 / 1.75		Suitable Component Kit
		Intake	Exhaust	Intake	Exhaust	Intake	Exhaust	Intake	Exhaust	
FACTORY OEM SPECS (Neon 2.0L)	Stock	222°	222°	174°	172°	.198"	.180"	.347"	.315"	Stock
STAGE 1 Works with stock valve springs and retainers. Daily driver, mild idle. RPM Range: Idle - 6700+	64450N-2	234°	234°	184°	184°	.200"	.200"	.350"	.350"	Stock
STAGE 2 Aggressive street use and nitrous. Slight lobe at idle. Springs required. RPM Range: 1500 - 7000+	64451N-2	241°	241°	196°	196°	.230"	.230"	.403"	.403"	84176
STAGE 2 - Forced Induction Special Designed specifically for Turbo/Supercharger application. Springs required. RPM Range: 1500 - 7000+	64454N-2	238°	238°	188°	188°	.230"	.220"	.403"	.385"	84176
STAGE 3 - Full Race Recommended for drag race use. Heavy engine mods required. RPM Range: 2000 - 7200+	64452N-2	248°	248°	200°	200°	.234"	.234"	.410"	.410"	84176
STAGE 4 - Full Race Recommended for drag race use. Springs, ECU mods required. RPM Range: 2200 - 7500+	64453N-2	254°	254°	216°	216°	.265"	.265"	.463"	.463"	84176
CUSTOM GROUND NEON CAMS Special order custom ground profiles available for an additional charge. Proprietary and confidential profiles, as well as mechanical profiles also available.	00069-2	Refer to www.crower.com for camshaft recommendation								

Note: These cams use .000" intake and exhaust valve lash (cold).

Note: Cam specs are taken at the cam lobe. Specs at the valve will be higher.

SRT-4 - TWIN CAM (REAR EXHAUST)

S = SRT-4 P = PT CRUISER

STAGE 1 Works with stock valve springs and retainers. Daily driver, mild idle. RPM Range: Idle - 6700+	64475P-2 64475S-2	266°	260°	210°	203°	.240"	.230"	.420"	.403"	84176
STAGE 2 Aggressive street use and nitrous. Slight lobe at idle. Springs required. RPM Range: 1500 - 7000+	64476P-2 64476S-2	274°	266°	218°	210°	.250"	.240"	.438"	.420"	84176
STAGE 3 - Race Most popular profile for the street/strip. Springs/retainers mandatory. RPM Range: 2000 - 7200+	64477P-2 64477S-2	284°	277°	232°	223°	.265"	.254"	.464"	.445"	84176
CUSTOM GROUND SRT-4, PT CRUISER CAMS Special order custom ground profiles available for an additional charge. Proprietary and confidential profiles, as well as mechanical profiles also available.	00077P-2 00077S-2	Refer to www.crower.com for camshaft recommendation								

ENGINEERED COMPONENT KITS

Part No.	Springs	Retainers	Remarks
84176	68190-16	87084-16	15% more pressure than factory spring
84176S	68190-16	87084S-16	Chromoly retainers for street use

Spring pressure:

68190-16 Seat: 1.500" @ 88 lbs / Nose: 1.100" @ 195 lbs / Coil bind: 0.920" (No machine work required).

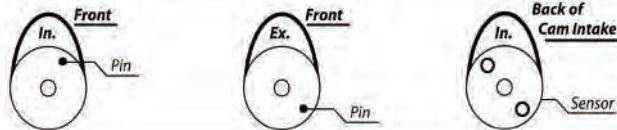
Note: Crower titanium retainers weigh 7 grams vs. 12.5 grams stock.

REMEMBER!

When installing new camshaft please remember that the contact surface of the follower must be free of wear/smooth surface.

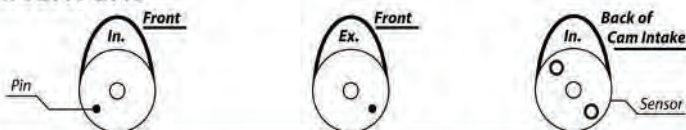
Dowell Pin and Cam Sensor position when #1 cylinder lobes are at 12:00 a clock

NEON



Dowell Pin and Cam Sensor position when #1 cylinder lobes are at 12:00 a clock

SRT4 2003-2005



HYDRAULIC ROLLER TAPPET



**DODGE VIPER/RT-10 & GTS
ALL YEARS**

Description (Note: See pages 6-7 for a detailed explanation of each Performance Level)	Part Number	Lobe Sep.	Advertised Duration		Duration @ .050"		Lobe Lift		Gross Lift 1.6 / 1.6		Gross Lift 1.7 / 1.7		Suitable Component Kit
			Intake	Exhaust	Intake	Exhaust	Intake	Exhaust	Intake	Exhaust	Intake	Exhaust	
CUSTOM GROUND HYDRAULIC ROLLER - 1992-2002 Special order hydraulic lifter camshaft ground to your specifications. Call with all engine data including head flow data, valve sizes, operating power range, etc when ordering.	00136HR												<i>Refer to www.crower.com for camshaft recommendation</i>
CUSTOM GROUND HYDRAULIC - 2003-UP Special order hydraulic lifter camshaft ground to your specifications. Call with all engine data including head flow data, valve sizes, operating power range, etc when ordering.	00137HR												<i>Refer to www.crower.com for camshaft recommendation</i>

DODGE V8 MAGNUM TRUCK

Description	Part Number	Lobe Sep.	Advertised Duration		Duration @ .050"		Lobe Lift		Gross Lift 1.6 / 1.6		Gross Lift 1.7 / 1.7		Suitable Component Kit
			Intake	Exhaust	Intake	Exhaust	Intake	Exhaust	Intake	Exhaust	Intake	Exhaust	
Daily Driver RPM Range: Idle to 4800 Redline: 5000 rpm max	34414	114°	268°	277°	204°	208°	.298"	.315"	.458"	.467"	.508"	.535"	84567
Unblown or Blown, Daily Driver RPM Range: 2200 to 6000 Redline: 6500 rpm max	34415	114°	274°	274°	216°	216°	.296"	.296"	.475"	.475"	.505"	.505"	84567
Higher Compression (9.8:1+), Headers RPM Range: 2800 to 6500 Redline: 7000 rpm	34416	114°	284°	284°	224°	224°	.307"	.307"	.492"	.492"	.523"	.523"	84567

Note: The above cores are cast steel. 8620 steel billet cores are also available.

DODGE V10 MAGNUM TRUCK

Description	Part Number	Lobe Sep.	Advertised Duration		Duration @ .050"		Lobe Lift		Gross Lift 1.6 / 1.6		Gross Lift 1.7 / 1.7		Suitable Component Kit
			Intake	Exhaust	Intake	Exhaust	Intake	Exhaust	Intake	Exhaust	Intake	Exhaust	
Daily Driver RPM Range: Idle to 4800 Redline: 5000 rpm max	35414	114°	268°	277°	204°	208°	.298"	.315"	.458"	.467"	.508"	.535"	84548
Unblown or Blown, Daily Driver RPM Range: 2200 to 6000 Redline: 6500 rpm max	35415	114°	274°	274°	216°	216°	.296"	.296"	.475"	.475"	.505"	.505"	84548
Higher Compression (9.8:1+), Headers RPM Range: 2800 to 6500 Redline: 7000 rpm	35416	114°	284°	284°	224°	224°	.307"	.307"	.492"	.492"	.523"	.523"	84548

Note: The above cores are cast steel. 8620 steel billet cores are also available. 1998 V10 trucks are regrind only

VALVE TRAIN ASSEMBLY

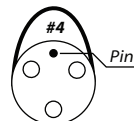
Part No.	Description
73656K	Stainless rockers (1.7) up to 5500 rpm. If V10, use #73659K
73656PK	Rocker (1.7), guide plate, pushrod kit over 5500 rpm
68405	Valve springs (1.700 @ 110 lbs, 1.150 @ 316 lbs)
87044	Steel retainers (5/16 stem diameter). Use stock keepers
66325	Hydraulic roller lifters. If V10 truck, use #66326

If exceeding 5500 rpm, Crower recommends running Crower springs/ retainers.
PK kits include #70518 guide plates & pushrods (6.950") +.050 over stock.

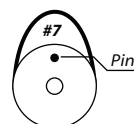
Please specify V8 or V10 when ordering cams & valve train components.

ENGINEERED COMPONENT KITS

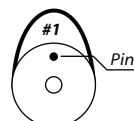
Part No.	Springs	Retainers	Seats	Remarks
84548	68405-20	87044-20	68940-20	Chromoly Retainers, V10
84567	68405-16	87044-16	68940-16	Chromoly Retainers, V8



2003 - Up Viper V-10 3 Bolt, dowell pin to #7 lobe
same size all bearings 2.090". Please specify when ordering



1998 - 2002 Viper V-10 Single Bolt, dowell pin to #4 lobe
same size all bearings 2.090". Please specify when ordering



V-10 Magnum Truck Single Bolt, dowell pin to #1 lobe
different size all bearings

HYDRAULIC ROLLER TAPPET

03 & UP
DODGE 5.7 & 6.1L HEMI

Description (Note: See pages 8-9 for a detailed explanation of each Performance Level)	Part Number	Lobe Sep.	Advertised Duration		Duration @ .050"		1.6 VL		Suitable Component Kit
			Intake	Exhaust	Intake	Exhaust	Intake	Exhaust	
Hydraulic Roller - Operation Power Range: 1600 - 6250 rpm	33493	114°	258°	267°	209°	218°	.512"	.538"	84715 84716
Hydraulic Roller - Operating Power Range: 1800 - 6400 rpm	33494	114°	263°	271°	213°	222°	.528"	.548"	84715 84716
Hydraulic Roller - Operating Power Range: 2000 - 6500 rpm	33495	114°	267°	275°	218°	225°	.539"	.560"	84715 84716
CUSTOM GROUND HYDRAULIC Special order hydraulic lifter camshaft ground to your specifications. Call with all engine data including head flow data, valve sizes, operating power range, etc when ordering.	00133HR	<i>Refer to page 7 for camshaft recommendation form</i>							

ENGINEERED COMPONENT KITS

Part No.	Lifters	Springs	Retainers	Description
84715	66323P-16	68435-16	87035-16	Steel Retainers
84716	66323P-16	68435-16	87035T-16	Titanium Retainers

SPRING DISC: # 68924-1 A (O.D.): 1.400", B (Step): .970", C (I.D.): .527
68925-1 A (O.D.): 1.400", B (Step): .780", C (I.D.): .527

Spring pressure:

68435-16: O.D./I.D. Outer: 1.210/0.805 / O.D. Small End: 1.035 / I.D. Small End: 0.630 Seat: 1.800" @ 135 lbs / Nose: 1.200" @ 350 lbs / Beehive valve spring: / Spring Rate: 358 / Coil bind: 1.150" / Max Lift: 0.600 (Machine work not needed).
See spring and retainer specs or contact Crower for proper recommendations.

Valve timing events are available online at: www.crower.com/valvtime.html

ADJUSTABLE TIMING SET

Part No.	Description
76857	Crower adjustable timing set

DON'T SEE YOUR FAVORITE PART # ?
IT MAY STILL BE AVAILABLE
CALL THE CROWER TECH. DEPT FOR INFO.

Crower Recommends ZDDPlus for all Flat Tappet Cams

ZDDPlus™ contains 42,700 ppm of phosphorus and 57,300 ppm of zinc. When a 4-ounce bottle of ZDDPlus™ is added to 5 quarts of oil, it is diluted 41:1, which contributes 1047 ppm of phosphorus and 1397ppm of zinc to whatever the oil may or may not already contain.
Part #86092 - 4oz Bottle of ZDDPlus & Paste



HYDRAULIC FLAT TAPPET



Non Roller

273 340 360 & 1967-up 318 LA V8

Description (Note: See pages 6-7 for a detailed explanation of each Performance Level)	Part Number	C.I.D. Group	Grind	Lobe Sep.	Advertised Duration		Duration @ .050"		Gross Lift 1.5 / 1.5		Suitable Component Kit
					Intake	Exhaust	Intake	Exhaust	Intake	Exhaust	
TORQUE BEAST / Performance Level 1 Low to mid-range torque for daily drivability. Economical price. RPM Range: 1500 - 4250 / Redline: 5500	31917	318 340	278H	112°	278°	288°	204°	214°	.422"	.444"	84137
POWER BEAST / Performance Level 2 Delivers impressive mid-range and top end power. Healthy sound. Economical price. RPM Range: 1750 - 4500 / Redline: 5750	31918	318 360	288H	112°	288°	298°	214°	224°	.444"	.467"	84137
ULTRA BEAST / Performance Level 3 Upper mid-range to top end power. Emphasis on top end. RPM Range: 2000 - 4800 / Redline: 6200	31916	318 360	269H	112°	269°	282°	223°	234°	.480"	.494"	84131
HOT STREET BEAST / Performance Level 4 Explosive performance gains on top end power. Economical price. RPM Range: 2200 - 5000 / Redline: 6500	31919	318 360	318H	112°	318°	328°	232°	242°	.450"	.476"	84131
POWER COMPU-PRO / Performance Level 2 Perfect combination of power and mileage. Provides excellent low end and mid-range power with extended rpm's for spirited driving. RPM Range: 1500 - 4000 / Redline: 5500	31241 MTO	318 360	267HDP	112°	267°	271°	218°	222°	.474"	.485"	84137
HIGH PERFORMANCE COMPU-PRO / Performance Level 3 Intended for the hot marine/strip application, these cams offer extended rpm range with emphasis on upper bottom to top end power with strong mid-range. RPM Range: 1800 - 4500 / Redline: 6000	31242 MTO	318 CID	271HDP	112°	271°	284°	222°	234°	.485"	.495"	84131
	31243	340 360	282HDP	112°	282°	292°	227°	237°	.480"	.503"	84131
HI-DRAULIC HAULER / Performance Level 4 Rough idle. Explosive mid-range torque. RPM Range: 2500 - 6500	31204	340 360	280HDP	108°	280°	292°	218°	227°	.474"	.480"	84131
HI-DRAULIC HAULER / Performance Level 5 Violent mid-range acceleration and torque. RPM Range: 2700 - 6500	31205 MTO	340 360	290HDP	108°	290°	298°	224°	234°	.507"	.522"	84131
HI-DRAULIC HAULER / Performance Level 5 Rough idle. Explosive mid-range acceleration and torque. RPM Range: 3000 - 6500	31206 MTO	340 360	302HDP	108°	302°	312°	240°	249°	.554"	.549"	84131
TURBOMASTER Intended for turbocharged hot street/strip and marine use. Delivers extended rpm's on upper bottom and top. RPM Power Range: 2000	31979	340 360	290HT	114°	290°	272°	228°	210°	.467"	.420"	84131
SUPERCHARGER Dual purpose hot drag and marine camshaft designed to enhance supercharger systems. Strong mid to top end. RPM Power Range: 2400	31981	340 360	304HC	114°	304°	304°	238°	238°	.501"	.501"	84131
CUSTOM GROUND HYDRAULIC Special order hydraulic camshaft ground to your specifications. Call our technical supports staff for personalized camshaft assistance.	00131	ALL CID	Refer to www.crower.com for camshaft recommendation								

ENGINEERED COMPONENT KITS

Part. No	Lifters	Springs	Retainers	Seals	Remarks
84137	66031-16	68313-16	87049-16	86071-16	For rpm up to 6500
84131	66031-16	68405-16	87049-16	86071-16	Dual Spring
84131X3	66031X3-16	68405-16	87049-16	86071-16	CamSaver Lifter

Note: These cams use .000" intake and exhaust valve lash.

Part numbers no longer listed may be available as custom grinds. Please contact Crower.

Note: "MTO" denotes that this item is not usually stocked but is Made To Order in 2-3 days.

For severe duty applications, Crower offers a high-lube "CamSaver" lifter that channels more oil to the cam lobe and lifter surface. **Specify X3 after corresponding component kit.**

Spring pressure:
68405-16 Seat: 1.700" @ 110 lbs / Nose: 1.200" @ 297 lbs / Coil bind: 0.980"

* Machine work required, specify 38 pilot shaft when ordering.

Note: When using high lift cams (over .480") or modified valve stem lengths, a longer pushrod is required to achieve proper lifter preload (.050" off snap-ring). Use checking pushrod to determine length and call with specs.

CAUTION! When using high lift cams pay close attention to retainer, oil seal and valve guide clearance at full lift (minimum .050").

Valve timing events are available online at: www.crower.com

ACCESSORIES

Part. No	Description
See pg. 186	Spring seat cutter
Pg. 141-145	Pushrods
See pg. 136	Roller timing gear

Note: Longer pushrods required with Mopar adjustable rockers.

Note: If using longer than stock valves you may require spring and retainer modifications. Contact Crower.

Non Roller

273 340 360 & 1967-up 318 LA V8

Description (Note: See pages 6-7 for a detailed explanation of each Performance Level)	Part Number	C.I.D. Group	Grind	Lobe Sep.	Advertised Duration		Duration @ .050"		Gross Lift 1.5 / 1.5		Suitable Component Kit
					Intake	Exhaust	Intake	Exhaust	Intake	Exhaust	
PRO-STREET / PERFORMANCE LEVEL 3 High revving with superior mid-range and top end power. RPM Power Range: 2500 - 6500 / Redline: 7000+	31321	ALL CID	294FDP	112°	294°	298°	243°	245°	.521"	.528"	84331 or 84331X980
COMPU-PRO / PERFORMANCE LEVEL 5 High torque, short oval camshaft. RPM Power Range: 3500 - 6500 / Redline: 7000+	31312	ALL CID	304FDP	108°	304°	310°	250°	254°	.545"	.558"	84331 or 84331X980
COMPU-PRO / PERFORMANCE LEVEL 5 Great high torque mid-range oval track grind. RPM Power Range: 4000 - 7000 / Redline: 7500+	31313	ALL CID	310FDP	105°	310°	318°	263°	265°	.573"	.581"	84331 or 84331X980
COMPU-PRO / PERFORMANCE LEVEL 5 Upper mid-range and top end power for extra pop above 7000 rpm. RPM Power Range: 4500 - 7500 / Redline: 8000+	31314	ALL CID	318FDP	106°	318°	324°	270°	276°	.591"	.609"	84331 or 84331X980
CUSTOM GROUND SOLID Special order solid lifter camshaft ground to your specifications. Call our technical support staff for personalized camshaft assistance.	00131M	ALL CID	<i>Refer to www.crower.com for camshaft recommendation</i>								

Note: These cams use .022" intake, .024" exhaust valve lash.

ENGINEERED COMPONENT KITS

Part. No	Lifters	Springs	Retainers	Seals	Remarks
84331	66931-16	68405-16	87049-16	86071-16	For rpm up to 7500 plus.
84331LW980	66931LW980-16	68405-16	87049-16	86071-16	Light Weight Lifter.

Part numbers no longer listed may be available as custom grinds. Please contact Crower.

For severe duty applications, Crower recommends using our solid lifter with the added "**coolface oiling option**". Specify **X980** after corresponding component kit.

Spring pressure:

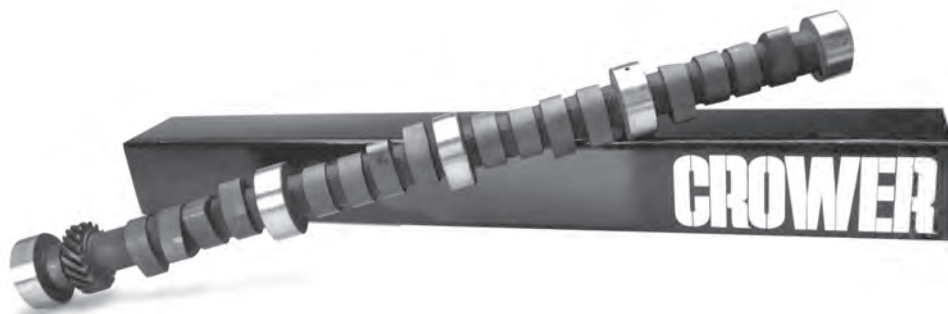
68405-16 Seat: 1.700" @ 110 lbs / Nose: 1.200" @ 297 lbs / Coil bind: 0.980"

* Machine work required, specify 3/8 pilot shaft when ordering.
#70176-16 or longer pushrods are required with adjustable rocker arms.
CAUTION! When using high lift cams pay close attention to retainer, oil seal and valve guide clearance at full lift (minimum .050").
Valve timing events are available online at: www.crower.com

ACCESSORIES

Description	See Page (s)
Rocker Arms	Pg's.146-168

Note: Rocker arms available in Aluminum & Stainless steel



DON'T SEE YOUR FAVORITE PART #?
IT MAY STILL BE AVAILABLE
CALL THE CROWER TECH. DEPT FOR INFO.

MECHANICAL ROLLER TAPPET



Mechanical

273 340 360 & 1967-up 318 LA V8

Description (Note: See pages 6-7 for a detailed explanation of each Performance Level)	Part Number	C.I.D. Group	Grind	Lobe Sep.	Advertised Duration		Duration @ .050"		Gross Lift 1.5 / 1.5		Suitable Component Kit
					Intake	Exhaust	Intake	Exhaust	Intake	Exhaust	
ULTRA-ACTION / Performance Level 5 High torque oval track and drag profile. RPM Power Range: 3000 - 7000 / Redline: 7500+	31407	ALL CID	294R	108°	294°	298°	258°	262°	.624"	.627"	84533
ULTRA-ACTION / Performance Level 5 Strong upper mid range and top end power. RPM Power Range: 4000 - 7500 / Redline: 8000+	31408 MTO	ALL CID	300R	105°	300°	306°	258°	268°	.685"	.702"	84531N
ULTRA-ACTION / Performance Level 5 High torque drag profile with mid-range and top end power. RPM Power Range: 5200 - 8000 / Redline: 8250+	31409 MTO	ALL CID	304R	106°	304°	310°	268°	274°	.645"	.623"	84531N
CUSTOM ORDER ROLLER Special order roller lifter camshaft ground to your specifications. Call our technical support staff for personalized camshaft assistance.	00131R	ALL CID	Refer to www.crower.com for camshaft recommendation							See Below	

Note: These cams use .026" intake, .028" exhaust valve lash.

Note: "MTO" denotes that this item is not usually stocked but is **Made To Order** in 2-3 days.

ENGINEERED COMPONENT KITS

Part. No	Springs	Retainers	Seals	Remarks
84533	68725-16	87055D-16	86071-16	For rpm up to 6500.
84531N	68670S-16	87063-16	86071-16	For rpm above 8000.

Spring pressure:

68725-16 Seat: 1.800" @ 264 lbs / Nose: 1.250" @ 556 lbs / Coil bind: 1.150"

A. Requires longer stem valves to achieve installed spring height.

* Machine work required, specify 3/8 pilot shaft when ordering.
#70176-16 or longer pushrods are required with adjustable rocker arms.

CAUTION! When using high lift cams pay close attention to retainer, oil seal and valve guide clearance at full lift (minimum .050").

Valve timing events are available online at: www.crower.com

AVAILABLE CAM JOURNAL SIZES

Stock Chrysler Bearing Size - Journal 1 = 1.998", 2 = 1.982", 3 = 1.967", 4 = 1.951", 5 = 1.561"
Roller Bearing (Arrington) - Journal 1, 2, 3, 4 = 1.968", Journal 5 = 1.575"
Roller Bearing (Mopar Performance) - All Journals = 1.968"
Dodge R5 Standard Bearing - All Journals = 60mm

To order the above cores specify #00003. 60mm is available on special order basis only (#00060).

Special Firing Orders also available.

ACCESSORIES

Description	See Page (s)
Lifters	Pg's.127-140

Part numbers no longer listed may be available as custom grinds. Please contact Crower.





HYDRAULIC FLAT TAPPET

Non Roller 1958-1980

350 361 383 400 413 426 440 B V8

Description (Note: See pages 6-7 for a detailed explanation of each Performance Level)	Part Number	C.I.D. Group	Grind	Lobe Sep.	Advertised Duration		Duration @ .050"		Gross Lift 1.5 / 1.5		Suitable Component Kit
					Intake	Exhaust	Intake	Exhaust	Intake	Exhaust	
BAJA BEAST / Performance Level 1 Exhibits broad stump pulling power and torque. Good for stock replacement. RPM Power Range: 1200 - 3800 / Redline: 5200+	32915	383 CID	250H	112°	250°	254°	200°	207°	.423"	.444"	84137
TORQUE BEAST / Performance Level 2 Low to mid-range torque for daily drivability. Economical price. RPM Power Range: 1500 - 4250 / Redline: 5500+	32917 MTO	383 CID	278H	112°	278°	288°	204°	214°	.422"	.444"	84137
POWER BEAST / Performance Level 3 Delivers impressive mid-range and top end power. Healthy sound. Economical Price. RPM Power Range: 1750 - 4500 / Redline: 5750+	32918 MTO	350 361	288H	112°	288°	298°	214°	224°	.444"	.467"	84132
ULTRA BEAST / Performance Level 3 Upper mid-range to top end power. Emphasis on top end. RPM Power Range: 2000 - 4800 / Redline: 6200+	32916	383 413	265H	112°	265°	269°	218°	222°	.475"	.484"	84132
HOT STREET BEAST / Performance Level 4 Explosive performance gains on top end power. Economical price. RPM Power Range: 2200 - 5000 / Redline: 6500	32919	426 440	312H	109°	312°	320°	242°	252°	.521"	.551"	84132
POWER COMPU-PRO / Performance Level 3 Perfect combination of power and mileage. Provides excellent low end and mid-range power with extended rpm's for spirited driving. RPM Power Range: 1500 - 4000 / Redline: 5500+	32241	426 440	267HDP	112°	267°	271°	220°	223°	.478"	.486"	84132
HIGH PERFORMANCE COMPU-PRO / Performance Level 4 Intended for the hot marine/strip application, these cams offer extended rpm range with emphasis on upper bottom to top end power with strong mid-range. RPM Power Range: 1800 - 4500 / Redline: 6000+	32242	383 413	271HDP	112°	271°	284°	222°	234°	.486"	.496"	84132
	32243	426 440	282HDP	112°	282°	292°	228°	236°	.478"	.502"	84132
CUSTOM GROUND HYDRAULIC Special order hydraulic camshaft ground to your specifications. Call with all engine data including head flow data, valve sizes, operating power range, etc.	00132H	ALL CID	Refer to www.crower.com for camshaft recommendation								

Note: These cams use .000" intake and exhaust valve lash.

Note: Three-bolt cams are available. Specify when ordering.

Note: "MTO" denotes that this item is not usually stocked but is Made To Order in 2-3 days.

ENGINEERED COMPONENT KITS

Part. No	Lifters	Springs	Retainers	Seals	Remarks
84137	66031-16	68313-16	87049-16	86071-16	For rpm up to 6500 plus.
84132X3	66031X3-16	68340-16	87063-16	86071-16	For rpm up to 6500 plus.
84132RM3	66031RM3-16	68340-16	87063-16	86071-16	Rev-Max Lifter.

Part numbers no longer listed may be available as custom grinds. Please contact Crower.

Spring pressure:

68340 -16 Seat: 1.900" @ 119 lbs / Nose: 1.350" @ 359 lbs / Coil bind: 1.080" (Machine work, use cutter 68986*).

* Machine work required, specify 3/8 pilot shaft when ordering.

Low Block: 350, 361, 383, 400 cid.

High Block: 413, 426, 440 cid.

For engines that were originally equipped with a hydraulic flat tappet cam, retro fit hydraulic roller cams & kit are available, call CROWER for details.

CAUTION! When using high lift cams pay close attention to retainer, oil seal and valve guide clearance at full lift (minimum .050").

Note: When using high lift cams (over .480") or modified valve stem lengths, a longer pushrod is required to achieve proper lifter preload (.050" off snap-ring). Use checking pushrod to determine length and call with specs.

Part numbers no longer listed may be available as custom grinds.

Please contact Crower.

ACCESSORIES

Description	See Page (s)
Rocker Arms	Pg's.146-168
Rods	Pg's.141-145
Crankshafts	Pg's.189-204

Note: Rocker arms available in Aluminum & Stainless steel

HYDRAULIC FLAT TAPPET



Non Roller

350 361 383 400 413 426 440 BV8

Description (Note: See pages 6-7 for a detailed explanation of each Performance Level)	Part Number	C.I.D. Group	Grind	Lobe Sep.	Advertised Duration		Duration @ .050"		Gross Lift 1.5 / 1.5		Suitable Component Kit
					Intake	Exhaust	Intake	Exhaust	Intake	Exhaust	
ULTRA PERFORMANCE COMPU-PRO / Performance Level 4 Dual purpose hot street/strip camshaft. Delivers strong mid-range and top end torque and horsepower. RPM Power Range: 2000 - 6000 / Redline: 6500	32242	383 413	271HDP	112°	271°	284°	222°	234°	.486"	.496"	84132
	32243	426 440	282HDP	112°	282°	292°	228°	236°	.478"	.502"	84132
PERFORMANCE LEVEL 5- Dual purpose hot street/strip camshaft. Delivers strong mid-range and top end torque and horsepower. RPM Power Range: 2000 - 6000 / Redline: 6500	32244 MTO	426 440	292HDP	112°	292°	310°	238°	249°	.534"	.552"	84132
HI-DRAULIC HAULER / Performance Level 5 Violent mid-range acceleration and torque. RPM Power Range: 2700 - 6500	32206	383 413	294HDP	108°	294°	304°	230°	241°	.509"	.530"	84132
HI-DRAULIC HAULER / Performance Level 5 Rough idle. Explosive mid-range acceleration and torque. RPM Power Range: 3000 - 6500	32207 MTO	426 440	300HDP	108°	300°	310°	238°	249°	.528"	.552"	84032
HI-DRAULIC HAULER / Performance Level 5 Extremely violent mid-range and top end horsepower. RPM Power Range: 3200 - 6500	32208	426 440	308HDP	108°	308°	316°	249°	253°	.530"	.546"	84132
SUPERCHARGER Designed for B&M/Roots type supercharged street/strip and marine applications. Emphasis on mid to top end. RPM Power Range: 2400 to 6500	32980 MTO	426 440	288HC	114°	288°	288°	230°	230°	.461"	.461"	84132
SUPERCHARGER Dual purpose hot drag and marine camshaft designed to enhance supercharger systems. Strong mid to top end. RPM Power Range: 2400 to 6500	32981 MTO	426 440	304HDP	114°	304°	304°	236°	236°	.501"	.501"	84132
CUSTOM GROUND HYDRAULIC Special order hydraulic lifter camshaft ground to your specifications. Call our technical support staff for personalized camshaft assistance.	00132H	ALL CID	Refer to www.crower.com for camshaft recommendation								

Note: Three-bolt cams are available. Specify when ordering.

Note: These cams use .000" intake and exhaust valve lash.

ENGINEERED COMPONENT KITS

Part. No	Lifters	Springs	Retainers	Seals	Remarks
84132	66031-16	68340-16	87063-16	86071-16	For rpm up to 6500 plus.
84132X3	66031X3-16	68340-16	87063-16	86071-16	For rpm up to 6500 plus.

Part numbers no longer listed may be available as custom grinds. Please contact Crower.

Spring pressure:

68340-16 Seat: 1.900" @ 118 lbs / Nose: 1.350" @ 355 lbs / Coil bind: 1.080" (Machine work).
Low Block: 350, 361, 383, 400 cid.
High Block: 413, 426, 440 cid.

For engines that were originally equipped with a hydraulic flat tappet cam, retro fit hydraulic roller cams & kit are available, call CROWER for details.

CAUTION! When using high lift cams pay close attention to retainer, oil seal and valve guide clearance at full lift (minimum .050").

Note: When using high lift cams (over .480") or modified valve stem lengths, a longer pushrod is required to achieve proper lifter preload (.050" off snap-ring). Use checking pushrod to determine length and call with specs.

Note: "MTO" denotes that this item is not usually stocked but is Made To Order in 2-3 days.



Crower Recommends ZDDPlus for all Flat Tappet Cams

ZDDPlus™ contains 42,700 ppm of phosphorus and 57,300 ppm of zinc. When a 4-ounce bottle of ZDDPlus™ is added to 5 quarts of oil, it is diluted 41:1, which contributes 1047 ppm of phosphorus and 1397ppm of zinc to whatever the oil may or may not already contain.
Part #86092 - 4oz Bottle of ZDDPlus & Paste



MECHANICAL FLAT TAPPET

Non Roller 1958-1980

350 361 383 400 413 426 440 B V8

Description (Note: See pages 6-7 for a detailed explanation of each Performance Level)	Part Number	C.I.D. Group	Grind	Lobe Sep.	Advertised Duration		Duration @ .050"		Gross Lift 1.5 / 1.5		Suitable Component Kit
					Intake	Exhaust	Intake	Exhaust	Intake	Exhaust	
PRO-STREET / Performance Level 4 High torque profile with big mid-range power. RPM Power Range: 3000 - 6000 / Redline: 6500+	32309	426 440	294FDP	112°	294°	298°	240°	244°	.519"	.531"	84332
PRO-STREET / Performance Level 4 High revving with superior mid-range and top end power. RPM Power Range: 3500 - 6500 / Redline: 7000+	32310	426 440	304FDP	110°	304°	310°	251°	255°	.548"	.557"	84332
COMPU-PRO / Performance Level 5 Great torque, midrange oval track grind. RPM Power Range: 4200 to 7200 / Redline: 7500 plus.	32314	426 440	318FDP	108°	318°	324°	271°	277°	.591"	.609"	84332
CUSTOM GROUND SOLID Special order solid lifter camshaft ground to your specifications. Call our technical support staff for personalized camshaft assistance.	00132M	ALL CID	<i>Refer to www.crower.com for camshaft recommendation</i>								See Below

Note: These cams use .022" intake, .024" exhaust valve lash.

MECHANICAL ROLLER TAPPET

Mechanical 1959-1980

350 361 383 400 413 426 440 B V8

Description (Note: See pages 6-7 for a detailed explanation of each Performance Level)	Part Number	C.I.D. Group	Grind	Lobe Sep.	Advertised Duration		Duration @ .050"		Gross Lift 1.5 / 1.5		Suitable Component Kit
					Intake	Exhaust	Intake	Exhaust	Intake	Exhaust	
STREET ROLLER / Performance Level 4 Excellent street/strip profile. RPM Power Range: 2500 - 6000 / Redline: 6500+	32412 MTO	426 440	270R	110°	270°	280°	236°	246°	.550"	.548"	84546M
ULTRA-ACTION / Performance Level 5 High torque profile with strong bottom and mid-range power. RPM Power Range: 3500 - 7250 / Redline: 7500+	32413	426 440	294R	108°	294°	298°	256°	265°	.624"	.627"	84546M
ULTRA-ACTION / Performance Level 5 Mid-range and top end drag profile. RPM Power Range: 4250 - 8000 / Redline: 8250+	32416	426 440	309R	104°	309°	318°	269°	280°	.714"	.716"	84546M
CUSTOM GROUND ROLLER Special order roller lifter camshaft ground to your specifications. Call our technical support staff for personalized camshaft assistance.	00132R	ALL CID	<i>Refer to www.crower.com for camshaft recommendation</i>								See Below

Note: These cams use .026" intake, .028" exhaust valve lash.

All cams are 3 bolt.

ENGINEERED COMPONENT KITS

Part. No	Lifters	Springs	Retainers	Seals	Remarks
84032S	66031-16	68302X2-16	87063-16	86071-16	Up to 6000 RPM Daily Driver.
84332	66931-16	68340-16	87063-16	86071-16	For rpm up to 7500 plus.
84332LW980	66931LW980-16	68340-16	87063-16	86071-16	Light Weight Lifter
84546M	66233-16	68804H-16	87055-16	86071-16	8000 plus rpm. Race only to .700" max lift.

Note: "MTO" denotes that this item is not usually stocked but is **Made To Order** in 2-3 days.

For severe duty applications, Crower recommends using our solid lifter with the added "**coolface oiling option**". **Specify X980 after corresponding component kit.**

Spring pressure:

68340-16 Seat: 1.900" @ 118 lbs / Nose: 1.350" @ 355 lbs / Coil bind: 1.080" (Machine work, use cutter 68986*).
68363-16 Seat: 1.900" @ 212 lbs / Nose: 1.200" @ 560 lbs / Coil bind: 1.100"

Optional springs: (race only over .725" max lift and/or 8000 rpm)
68848-16 Seat: 2.100" @ 329 lbs / Nose: 1.300" @ 913 lbs / Coil bind: 1.150"

* Machine work required, specify 3/8 pilot shaft when ordering.

Low Block: 350, 361, 383, 400 cid.

High Block: 413, 426, 440 cid.

68803-16 Seat: 1.900" @ 371 lbs / Nose: 1.300" @ 765 lbs / Coil bind: 1.140"

CAUTION! When using high lift cams pay close attention to retainer, oil seal and valve guide clearance at full lift (minimum .050").

Valve timing events are available online at: www.crower.com

HYDRAULIC FLAT TAPPET



**Non Roller 1966-1971
426 Hemi V8**

Description (Note: See pages 6-7 for a detailed explanation of each Performance Level)	Part Number	C.I.D. Group	Grind	Lobe Sep.	Advertised Duration		Duration @ .050"		Gross Lift 1.57 / 1.52		Suitable Component Kit
					Intake	Exhaust	Intake	Exhaust	Intake	Exhaust	
POWER COMPU-PRO / Performance Level 2 Power and mileage with extended rpm range for spirited motoring. RPM Power Range: 1500 - 4000 / Redline: 5500+	33240	426	280HDP	112°	280°	286°	211°	219°	.475"	.483"	84133
HIGH PERFORMANCE COMPU-PRO / Performance Level 3 Hot strip/strip cam. Strong upper bottom and top end power. RPM Power Range: 1800 - 4500 / Redline: 6000+	33241	426	294HDP	112°	294°	300°	222°	233°	.505"	.525"	84133
ULTRA PERFORMANCE COMPU-PRO / Performance Level 4 Good competition profile with super mid to top end performance. RPM Power Range: 2000 - 6000 / Redline: 6500+	33242 MTO	426	300H	112°	300°	300°	233°	233°	.543"	.525"	84133
CUSTOM GROUND ROLLER Special order hydraulic lifter camshaft ground to your specifications. Call our technical support staff for personalized camshaft assistance.	00133H	ALL CID	Refer to www.crower.com for camshaft recommendation								See Below

3 BOLT CAMS AVAILABLE

Note: These cams use .000" intake and exhaust valve lash.

MECHANICAL FLAT TAPPET

Description (Note: See pages 6-7 for a detailed explanation of each Performance Level)	Part Number	C.I.D. Group	Grind	Lobe Sep.	Advertised Duration		Duration @ .050"		Gross Lift 1.57 / 1.52		Suitable Component Kit
					Intake	Exhaust	Intake	Exhaust	Intake	Exhaust	
COMPU-PRO / Performance Level 3 High torque profile with emphasis on bottom end power. RPM Power Range: 2800 - 6000+	33253	426	284FDP	112°	284°	294°	238°	249°	.520"	.512"	84333
COMPU-PRO / Performance Level 4 Strong mid-range and top end profile that offers excellent torque and horsepower. RPM Power Range: 3200 - 6400+	33254 MTO	426	304FDP	108°	304°	308°	251°	255°	.571"	.563"	84333
COMPU-PRO / Performance Level 4 Explosive mid-range to top end profile for high horsepower applications. RPM Power Range: 4000 - 7000+	33255 MTO	426	310FDP	106°	310°	318°	269°	280°	.618"	.617"	84333
CUSTOM GROUND ROLLER Special order mechanical lifter camshaft ground to your specifications. Call our technical support staff for personalized camshaft assistance.	00133M	ALL CID	Refer to www.crower.com for camshaft recommendation								See Below

ENGINEERED COMPONENT KITS

Note: These cams use .022" intake, .024" exhaust valve lash.

Part. No	Lifters	Springs	Retainers	Seals	Keepers	Remarks
84133	66031-16	68340-16	87064-16	86070-16	86109-16	Hydraulic Lifter. 6500 rpm.
84133X3	66031X3-16	68340-16	87064-16	86070-16	86109-16	Hydraulic Lifter. 6500 rpm.
84333	66931-16	68340-16	87064-16	86070-16	86109-16	Solid Lifter. 7500 plus rpm.
84333X980	66931X980-16	68340-16	87064-16	86070-16	86109-16	Solid Lifter. 7500 plus rpm.

Spring pressure:

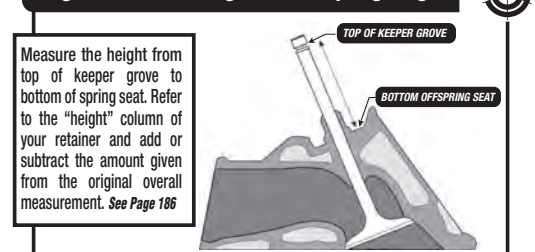
68340-16 Seat: 1.900" @ 118 lbs / Nose: 1.350" @ 355 lbs / Coil bind: 1.080" (Machine work, use cutter 68986 ZDDP).

Note: "MTO" denotes that this item is not usually stocked but is Made To Order in 2-3 days.

ACCESSORIES

Description	See Page (s)
Rods	Pg's.141-145
Crankshafts	Pg's.189-204

Diagram 1. Calculating Installed Spring Height



Note: If heads have been extensively modified (machined spring pockets, longer valves, etc.) contact Crower for proper spring, keeper, cup and retainer recommendations. Have your keeper/seat measurement available.

426 Hemi V8 1966-1971 KB ALUMINUM JP1 TFX MILODON & RODECK 45° Block & 48° Block Available

Description (Note: See pages 6-7 for a detailed explanation of each Performance Level)	Part Number	C.I.D. Group	Grind	Lobe Sep.	Advertised Duration		Duration @ .050"		Gross Lift		Suitable Component Kit
					Intake	Exhaust	Intake	Exhaust	Intake	Exhaust	
STREET ROLLER / PERFORMANCE LEVEL 4 Call for camshaft characteristics, as they depend on engine setup. RPM Power Range: 2500 - 6000+	33470	426	284R	110°	272°	280°	238°	246°	.576"	.558"	84532
STREET ROLLER / PERFORMANCE LEVEL 5 Call for camshaft characteristics, as they depend on engine setup. RPM Power Range: 3500 - 7500+	33471	426	298R	108°	298°	304°	263°	268°	.626"	.630"	84532
ULTRA-ACTION / PERFORMANCE LEVEL 5 Call for camshaft characteristics, as they depend on engine setup.	33472 MTO	426	308R	105°	308°	314°	278°	285°	.689"	.652"	84536
ULTRA-ACTION / PERFORMANCE LEVEL 5 Call for camshaft characteristics, as they depend on engine setup.	33473 MTO	426	318R	106°	318°	322°	286°	290°	.720"	.711"	84536
CUSTOM GROUND ROLLER Special order roller lifter camshaft ground to your specifications. Call our technical support staff for personalized camshaft assistance.	00133R	ALL CID	<i>Refer to www.crower.com for camshaft recommendation</i>								See Below

Note: These cams use .026" intake, .028" exhaust valve lash.

The above cores are 8620 steel billet. Use bronze distributor gear.

ENGINEERED COMPONENT KITS

Part No	Lifters	Springs	Retainers	Seals	Keepers
84532	66233-16	68803-16	86783-16	86070T-16	86709-16
84536	66233-16	68548-16	86069-16	86070T-16	86109-16

3 BOLT CAMS AVAILABLE

Spring pressure:

* Machine work required, specify 5/16 pilot shaft when ordering.

Note: If using 1 1/32 valve stems, change to keeper 86110-16.

Note: If running blown application, see heavy-duty roller lifters listed under accessories.

Note: If exceeding 7500 rpm, high pressure springs and titanium retainers may be required. See spring and retainer specs or contact Crower for proper recommendations. Valve timing events are available online at: www.crower.com

Note: "MTO" denotes that this item is not usually stocked but is Made To Order in 2-3 days.

ACCESSORIES

Part No	Description
73680-16	Billet rocker adjusting screw and lock nut
70188-16	Tapered pushrods 3/8
76545	Timing gear set
66284-16	Roller lifters w/.903" body & .812" O.D. bearing
66285-16	Roller lifters w/high seat (+.120")

Crower has an extensive inventory of single and double tapered pushrods available on a special order basis. Customer must furnish accurate pushrod length.

ACCESSORIES

Description	See Page (s)
Rods	Pg's.141-145
Crankshafts	Pg's.189-204

SPECIAL ORDER DRAG RACING CAMSHAFTS

KB Aluminum JP1 TFX Milodon & Rodeck

As of last count we have accumulated over 80 different combinations of proven drag racing cam profiles and Lobe Sep. configurations. So rather than list each profile and Lobe Sep., we felt that it would be more beneficial to encourage you to call our experienced technical support staff with your accumulated data and specifications. In a joint effort, that will be kept in the strictest of confidence, we will formulate the right combination of intake and exhaust lobe characteristics designed specifically for your application. We are currently involved with some of the top racers and engine builders and are achieving tremendous success with this style of format.

Diagram 1. Calculating Installed Spring Height

Measure the height from top of keeper groove to bottom of spring seat. Refer to the "height" column of your retainer and add or subtract the amount given from the original overall measurement. See Page 186



Note: If heads have been extensively modified (machined spring pockets, longer valves, etc.) contact Crower for proper spring, keeper, cup and retainer recommendations. Have your keeper/seat measurement available.