

**More opportunities**  
to meet individual  
patient needs



CONNECTIVITY

- ▶ A complete, integrated system
- ▶ Designed to maximize hearing instrument benefits
- ▶ Based on real user needs and experiences



Made for



iPod



iPhone



iPad



Works with  
Android™





# Meet the new **ConnectLine**

## One **complete**, integrated system

ConnectLine offers the most connectivity options in one system.

## ...that is **easy** to use

Easy and intuitive to use, ConnectLine ensures simple operation and can be tailored to meet your patients' individual needs.

## ...which **maximizes the benefits** of hearing instruments

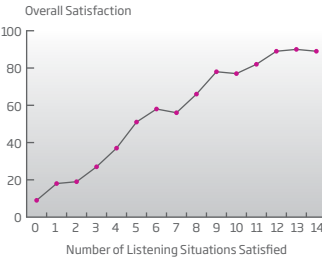
ConnectLine's wireless technology works seamlessly with Oticon hearing instruments to enhance positive listening and communication experiences, such as hands-free conversation from landline or cell phones, watching TV, listening to music, video chatting, teleloop access, and more.

## ...and is **based on experience**

Oticon is a leader in wireless connectivity solutions. This generation of ConnectLine devices benefits from extensive "real world" user experiences, offering even more wireless communication options.

## Did you know?

*Patient satisfaction with hearing instruments is strongly associated with what is called "multiple environmental listening utility" or MELU. When patients are satisfied with their ability to function in many listening situations, their overall satisfaction with their hearing solution is very high.*



*Kochkin, S. "10-Year Customer Satisfaction Trends in the US Hearing Instrument Market," Hearing Review, October 2002.*

# Connectivity is for everyone...

## People are different

Connectivity is an obvious solution for tech-savvy patients like on-the-go business people that depend on cell phones, computers, and other modern communication devices. These patients experience complex listening conditions every day and are likely to benefit from connectivity solutions in addition to their hearing instruments.

However, connectivity needs can be just as great for other patients in danger of being isolated from social activities. These users routinely depend on electronic media for entertainment and rely on their landline and cell phones as vital links to keep in touch with family and friends.

Because of these widely varied communication needs, a connectivity solution must be flexible so it can be tailored for each individual patient. From the most basic “TV only” solution to the most advanced multifunctional system using T-coil, video chat, and multiple phones, ConnectLine provides the convenience and flexibility for virtually any wireless communication need.

## ConnectLine is the solution.



Streamer Pro 1:1

# ...but Connectivity is not the same for everyone

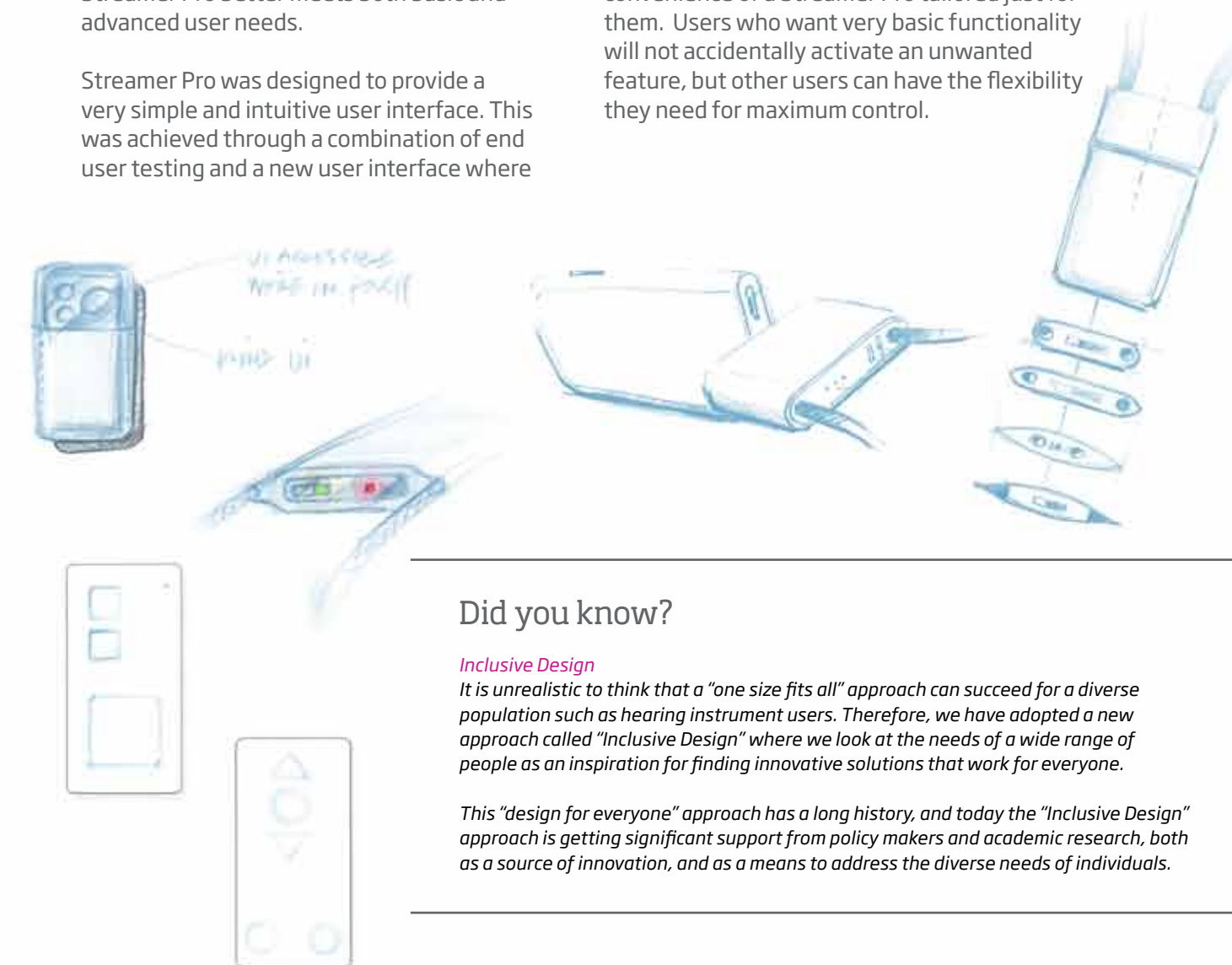
## Inclusive design, tailor made for individual needs

Inspired by the principles of inclusive design, the new Streamer Pro was developed systematically, incorporating advances in technology and valuable user experience with our first generation Streamer. The resulting Streamer Pro better meets both basic and advanced user needs.

Streamer Pro was designed to provide a very simple and intuitive user interface. This was achieved through a combination of end user testing and a new user interface where

more advanced features can be customized specifically for each patient (using Genie 2013.1 or later).

This design allows users to benefit from the convenience of a Streamer Pro tailored just for them. Users who want very basic functionality will not accidentally activate an unwanted feature, but other users can have the flexibility they need for maximum control.



## Did you know?

**Inclusive Design**  
It is unrealistic to think that a “one size fits all” approach can succeed for a diverse population such as hearing instrument users. Therefore, we have adopted a new approach called “Inclusive Design” where we look at the needs of a wide range of people as an inspiration for finding innovative solutions that work for everyone.

This “design for everyone” approach has a long history, and today the “Inclusive Design” approach is getting significant support from policy makers and academic research, both as a source of innovation, and as a means to address the diverse needs of individuals.



# A world of opportunities

Give your patients access to a wide range of communication and entertainment through just one device. ConnectLine can be easily adapted to meet your patients' individual lifestyle needs by providing everything from basic functionality to advanced multi-device connectivity.

For your patients, easy access to modern communication devices has never been as important as it is now--and this trend will only increase. With ConnectLine, all wireless connections are intuitively integrated through Streamer Pro for maximum user convenience.

ConnectLine is easy to configure and, unlike other systems that offer access to one or just a few devices, Streamer Pro gives your patients the potential to access nearly any Bluetooth compatible device at the touch of a button.



## Landline Phone

Clear and easy phone conversation with friends and loved ones using a landline home phone and Connect-Line Phone Adapter 2.0.



## Cell Phone

Hands-free phone calls on-the-go by pairing Streamer Pro with a cell phone--the hearing instruments become a wireless headset.



## TV

The new TV Adapter 2.0 and Streamer Pro provide wireless audio from the TV to the hearing instruments for comfortable TV viewing.



## Music

Listen to music with Streamer Pro by connecting wirelessly or with an audio cable to an MP3 player or other audio source.



## Remote

With just the touch of a button, users can easily and discreetly manage program and volume changes.



## Computer

Enjoy movies, internet, video chat, and other computer applications. Streamer Pro connects wirelessly or via cable to computers for maximum flexibility.



## Microphone

Users enjoy clearer one-to-one communication in challenging listening environments with Connect-Line Microphone due to improved signal-to-noise ratios.



## Teleloop

The built-in T-coil in Streamer Pro enables listening wherever teleloop systems are used, such as at theaters, auditoriums, worship services, and even homes.



## FM

FM is easier than ever. FM receivers attach directly to Streamer Pro's Euro-pin socket and the input is streamed to the user's hearing instruments.



## App

With the ConnectLine App, your clients' can control their hearing instruments and the ConnectLine system with their iPhone®, iPad®, iPod touch®, or Android™ devices.

# Designed to be used

## Streamer Pro... ...one device, many features

Whatever flexible combination of applications your patients choose, Streamer Pro provides easy and personalized wireless connectivity at their fingertips.

Streamer Pro provides the interface with wireless inputs from landline and cell phones, TV, and the ConnectLine Microphone. In addition, capabilities now include Teleloop reception, FM receiver input, and compatibility with digital office phones and internet-based video chat programs. For phone conversations, Streamer Pro uses a dual-microphone

noise reduction technology to reduce background noise for conversation partners. Streamer Pro also offers hearing instrument remote control functionality and up to eight hours of streaming for a full day's use on one battery charge.

Streamer Pro's new neck loop design provides a built-in antenna that secures a stable wireless connection with the users' hearing instruments for improved sound quality. Durable and simple to slip on and off, the neck loop is easily cleaned and, if needed, replaced.

- ▶ **Improved** neck loop design uses convenient, easy attachments with three lengths in two colors (black and white).
- ▶ **More** intuitive operation with three buttons makes it possible to instantly select and activate the application needed.
- ▶ **Longer** battery life - up to eight hours of streaming time for a full day's use.

## Streamer Pro: multiple wireless technologies, one complete solution

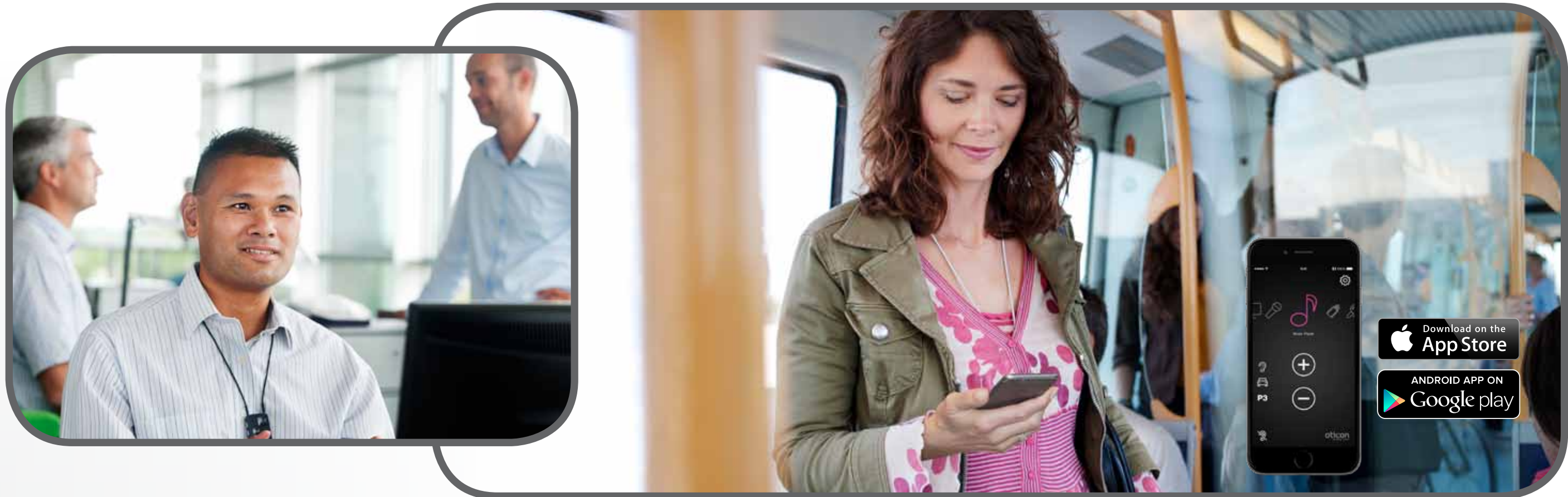
*Oticon's dedicated wireless system is based on near field magnetic induction technology (NFMI). Streamer Pro uses NFMI to transmit signals from multiple sources--Bluetooth, FM, teleloop--all with one intuitive device.*

- ▶ With NFMI there is very low additional battery drain in the hearing instruments when streaming, allowing for wireless connectivity in hearing instruments even with a size 10A battery. RF technology-based solutions consume up to five times more power.
- ▶ The user does not have to choose between connectivity options and great design! As NFMI requires less space in the hearing instruments, very small instrument styles can be wireless compatible, such as the Oticon designRITE..

- ▶ Compact, user-friendly design features texturized rubber edges for easier handling and a more comfortable grip.
- ▶ **Compatible** with all wireless Oticon hearing instruments and ConnectLine devices for seamless, hassle-free upgrades.







# Answering the call for modern communication

By streaming conversations directly into your clients' hearing instruments from their mobile or landline phone, ConnectLine functions in the same way as a hands-free headset, letting users enjoy clear two-way communication without ever touching their phones.

There is no need to run for the phone or search through pockets or purses; Streamer Pro allows your clients to answer the call with one easy push of a button.



ConnectLine Phone Adapter 2.0

The ConnectLine App for iPhone, iPad and iPod touch runs on iPhone 6 Plus, iPhone 6, iPhone 5s, iPhone 5c, iPhone 5, iPhone 4s, iPhone 4, iPad Air, iPad mini with Retina display, iPad mini, iPad (3rd and 4th generation), iPad 2, and iPod touch (5th generation) and requires Streamer Pro 1.2 App or later. When installing the ConnectLine App on iPad, search for iPhone apps in App Store. The ConnectLine App for Android smartphones and tablets requires any Streamer Pro with firmware 1.3 or later. Please visit [www.oticonusa.com/connectline](http://www.oticonusa.com/connectline) for more details on compatibility.

Apple, the Apple logo, iPhone, iPad, and iPod touch are trademarks of Apple Inc., registered in the U.S. and other countries. App Store is a service mark of Apple Inc. Android and Google Play are trademarks of Google Inc. The Android robot is reproduced or modified from work created and shared by Google and used according to terms described in the Creative Commons 3.0 Attribution License.



## Landline Phone

The new ConnectLine Phone Adapter 2.0 makes an existing (analog/PSTN system) landline phone Bluetooth compatible, transmitting conversation wirelessly to both hearing instruments through Streamer Pro.

- ▶ Answer the phone from where you are – no need to move to the phone.
- ▶ No more missed calls. With a wireless range of 30 meters, users can hear and answer a call from almost any room in the house.
- ▶ Distinctive ringtones\* can be configured (Genie 2013.1 and later) to indicate whether incoming calls are to the landline or cell phone.

*\*Available for Oticon Alta and later products.*



## Cell Phone

Users can take incoming calls by simply pressing a button on Streamer Pro and the caller's voice is streamed to the hearing instruments, providing the convenience of a hands-free headset.

- ▶ Streamer Pro is compatible with most brands and types of cell phones.
- ▶ Wirelessly connect with cell phones up to 10 meters away.



## ConnectLine App

With Streamer Pro and the free ConnectLine App, your clients can control their hearing instruments and the ConnectLine system with their iPhone, iPad, iPod touch or Android smartphone and tablet.

- ▶ Intuitive and discreet remote control for hearing instruments (adjust volume, choose programs, name programs and much more)
- ▶ Clear overview of the ConnectLine system
- ▶ Easy to choose input sources
- ▶ Easy to customize the ConnectLine system
- ▶ Available on App Store and on Google Play





# Let the entertainment begin

With ConnectLine, users have access to a world of everyday entertainment possibilities. They can watch TV with the audio streamed directly to their hearing instruments via Streamer Pro and the new TV Adapter 2.0 or listen to their

favorite music with their MP3 player. Streamer Pro also offers compatibility with computers, supporting internet phone chat programs or simple audio input when watching a movie or surfing the web.



ConnectLine TV Adapter 2.0

Dolby and the double-D symbol are registered trademarks of Dolby Laboratories.



## TV

The new ConnectLine TV Adapter 2.0 ensures your patients can keep up with the action, drama or comedy with the volume set at their preferred level. Everyone can listen at a level that is comfortable for them!

- ▶ A new extended wireless range of up to 30 meters between Streamer Pro and the ConnectLine TV Adapter 2.0.
- ▶ Support for digital stereo (PCM) and Dolby Digital®.
- ▶ Expanded setup options for connecting to modern TVs.



## Music and audio listening

Streamer Pro offers both wireless and cable connections (using a standard mini-jack connection) to a variety of music player and other audio sources. Music and audio are then streamed directly into the hearing instruments.

- ▶ For a wireless connection, Streamer Pro connects directly with most Bluetooth compatible audio devices.
- ▶ Using a wired connection, Streamer Pro's 3.5 mm mini-jack fits the majority of consumer electronic devices.
- ▶ While listening to audio, incoming phone calls can be accepted or rejected easily with the push of a button on Streamer Pro.



## Computer communication

For users, wearing headsets for video chatting or enjoying music and videos on their computers can be difficult. ConnectLine now offers two simple ways to connect Streamer Pro to computers so that audio is transmitted directly to the user's hearing instruments for clear, easy online conversation and listening.

- ▶ Wired headset listening: connect Streamer Pro directly to a computer using the 3.5 mm input/output mini-jack.
- ▶ Wireless headset listening: connect with Streamer Pro using a Sennheiser USB dongle (available through Oticon).







# One-to-one made easy

Crowded restaurants, noisy classrooms or understanding a speaker from a distance, ConnectLine takes the listening experience to a more personal level.

Streamer Pro is compatible with several solutions to improve listening in these situations. ConnectLine's companion microphone helps improve signal-to-noise

ratios in difficult listening situations--such as riding in the car. Streamer Pro also has a built-in T-coil for easy access to teleloop systems. And, FM compatibility is even easier with Streamer Pro's Europin socket for FM receiver input. All of these technologies support more active participation in both group and one-on-one situations.

ConnectLine Microphone



## ConnectLine Microphone

This discreet companion microphone is worn by the user's conversation partner and greatly improves signal-to-noise ratios.

- ▶ Surrounding noise is filtered out for better speech intelligibility for the hearing instrument user.
- ▶ Wireless range up to 15 meters.
- ▶ Appropriate for difficult listening situations such as cars and restaurants.



## T-coil

Streamer Pro's built-in T-coil provides access to teleloop systems regardless of whether or not the hearing instruments have a T-coil.

- ▶ The T-coil is activated by a single button push on Streamer Pro.
- ▶ Teleloop access for all Streamer Pro compatible instruments, regardless of size or style.
- ▶ Provides access to a popular wireless technology application.



## FM Systems

Students and others who depend on FM can use their FM receiver in conjunction with Streamer Pro, which then streams the signal to both hearing instruments.

- ▶ Streamer Pro's built-in Europin connector offers compatibility with a wide range of FM receivers.
- ▶ Any ConnectLine compatible hearing instrument can receive FM input via Streamer Pro, regardless of the instrument's own FM compatibility.
- ▶ FM input is quickly accessed with the press of a button on Streamer Pro.



## People First

People First is our promise  
to empower people  
to communicate freely,  
interact naturally and  
participate actively



[www.pro.oticonusa.com](http://www.pro.oticonusa.com)

**oticon**  
PEOPLE FIRST