
AS THE WOOD TURNS

January 2016 - Issue number 215 Minutes of the December Christmas Party


Next Hands On- Saturday, January 16th at Hank's Dust Bowl from 10-12 noon. *We invite beginning turners to a learning opportunity at the Hands On for one on one instruction. Spindle or bowl turning techniques will be covered. Please reserve your lathe with Pablo Gazmuri @ pgazmuri@comcast.net*

Our Christmas Party on December 15th was well attended. There was plenty of food and the gift box was full. Tickets were distributed to turners who contributed grab items to determine the order of selection at the box. Nigel announced that he had added four envelopes worth \$25 each from Craft Supplies to augment the grab.



Fuller Update- Bring your items to the January 26th meeting to be judged for inclusion in the Fuller Craft Show March 10th through June 5th. Each member may submit up to five items to be juried. For smaller items such as pens and bottle stoppers, 5 items count as one. Each piece should have the following information with it:

- Artist's name
- Artist's year of birth
- Mailing address & contact information of the artist
- Title of the work, year of construction
- Materials- write it as you would like it to read . Example- Walnut, wood dye, lacquer
- Dimensions of the work
- Insurance value
- Credit line- i.e. "collection of the artist" or "On loan from a private collection".

<p>MSSW Officers</p> <p>President- Steve Wiseman (508)-285-9394 stevwsmn@aol.com</p> <p>Vice president Eileen Walker (781)-545-1978 eileenturnswood@gmail.com</p> <p>Treasurer John Duggan (508)-583-7930 john.duggan06@comcast.net</p> <p>Secretary Tim Rix (617)-259-5618 rix.tim@gmail.com</p> <p>Librarian Lenny Mandeville (508)-586-7679 manleo@comcast.net</p> <p>Webmaster Eileen Walker (781)-545-1978 eileenturnswood@gmail.com</p>		<p>Next Meeting Tuesday, January 26, 2016 - at Hank's dust bowl at 409 Washington St., Abington, MA at 7 pm</p> <p>Refreshments – by Joe Manning</p> <p>Demo – Mike Grady - showing how to turn a lidded box with an inlaid ring of contrasting wood.</p>
------------------------------------------------------------------------------------------------------------------------------------------------------------------------------------------------------------------------------------------------------------------------------------------------------------------------------------------------------------------------------------------------------------------------------------------------------------------------------------------------------------------------------------------------------------------------------------------------------------------------------------------------------------------------------------------------------------------------------------------------------------------------------------------	-------------------------------------------------------------------------------------	-------------------------------------------------------------------------------------------------------------------------------------------------------------------------------------------------------------------------------------------------------------------------------------------

If there is any information that the Artist would like included on the narrative label, i.e. information about the construction process, meaning of the work, etc. would be appreciated but is not necessary.

Finally- items do not have to be for sale, but if something is for sale, submit a price for it with the other information brought to the meeting and we will discuss any compensation to Fuller at the meeting.

All items brought by members to the January meeting will be transported to the Fuller for the jury process to take place. This may happen as early as the next day. Any items not selected for the exhibition will be returned to the Artist at the February meeting. A list of the items selected will be made available to members.

Dues are Due- You can pay at the next meeting or Hands On still \$40 for the year. You can renew using Paypal.

The “missing” club lathe was not missing after all. It has been at the club all along. Someone mounted it on a stand. It is one of two midi lathes the club has.

Turned gift items



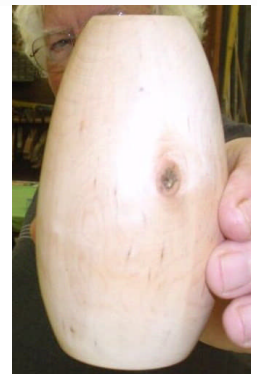
Bill Dooley selected a pair of wood stemmed wine goblets turned by Ian.



Michael Veno (who also drew a \$25 gift certificate from Craft Supplies) drew a dyed and textured bowl by Ken Lindgren.



Mike Walker got a weed pot turned by Tim Rix



Dusty got a small vase turned by Mike Walker.



Kevin received a gift certificate from Craft Supplies and also a brightly colored ornament by Mike Veno



Joe Manning got a gift certificate and a colored bandanna with a motorcycle theme from Martha Roache.



Steve drew a self winding top turned by Jeff.



Lenny Langevin holds a box with burn decoration turned by Pablo



Ken Whiting holds a twist pen turned by Dan Manley



Fred Scott drew a Box Elder bowl turned by Nigel.



Andy & Jamie Osborne drew a covered box turned by Bill Dooley.



Martha Roache holds a click pen turned by Joe Manning



Ian holds a twist pen turned by Paul O'Neil



Pablo has a box with an Ebony top turned by Bob Allen.



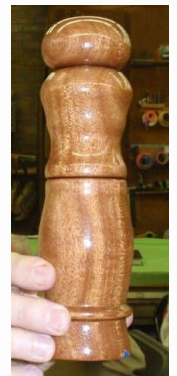
Ed Kurkoski holds a whistle turned by Ken Whiting



Tim Rix drew a framed Norfolk Island Pine wall hanging by Wally Kemp



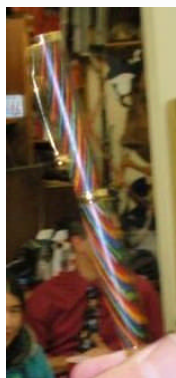
Ben Natale has an ornament turned by Lenny Langevin.



Ken Lindgren received a peppermill turned by Steve Wiseman



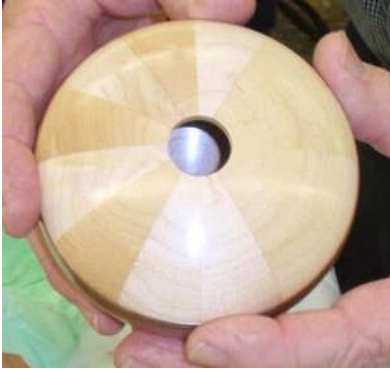
Nigel has a Walnut box and pen turned by Fred Scott.



Bob Allen holds a bunch of napkin rings turned by Dusty.



Jeff holds an inlaid box of Jasper Agate by Ben Natale.



Paul O'Neil has a segmented box turned by Ed Kurkoski.



Dan Manley has a bowl with three turned recesses by Andy Osborne.



Charlie McCarthy drew a shell ornament by Kevin Coughlin and also a \$25 gift certificate from Craft Supplies.



Wally drew a potpourri box -with potpourri by Charlie McCarthy

Upcoming Events

March 12 - June 5, 2016 - juried club exhibit at the Fuller Craft Center

Totally Turning Expo, April 2nd & 3rd., 2016 Saratoga Springs, New York at the Saratoga Hilton Hotel.

Mark St. Leger - April 9th & 10th, 2016 demonstration and a Hands On Workshop

Dyer Library in Abington – Sunday, May 1st, 2016

South Shore Arts Festival in Cohasset - Father's Day weekend. Friday, June 17th from 1:00 to 7:00 pm, Saturday, June 18th from 10:00 am until 7:00 pm and Sunday, June 19th from noon until 5:00 pm.

AAW National Segmented Symposium - October 27-30, 2016 in Quincy, Ma.

Items For sale at the Club store : – contact stevwsmn@aol.com Steve Wiseman

CA GLUE; THIN, MEDIUM and THICK All are the SAME PRICE

2 Ounce \$4.00, 2 Ounce rubberized \$5.00, 8 Ounce \$12.00, 16 Ounce \$21.00

2 Ounce Accelerator Spray Bottle \$3.00, 8 Ounce Accelerator Refill \$5.00, 2 Ounce Debonder \$3.00

\$.50, Long nozzles –package \$.75, 2 Ounce empty bottles \$.75, 2 Ounce replacement caps

Epoxy 4 Ounce \$5.00 **ANCHORSEAL** - 2 Liter \$15.00, 1 Liter \$8.00, ½ Liter \$4.00 **HATS** - \$15.00

SANDING DISCS; 80 THROUGH 320 GRIT - 2" \$2.50, 3" \$3.50

1" Disc Holder \$7.50, 2" Disc Holder \$8.50, 3" Disc Holder \$10.00

2" Blue Disc Holder \$12.00, 3" Blue Disc Holder \$14.00

½" Soft Pad Extension \$2.50, Hand Held Disc Holder \$11.00

Bottle Stoppers \$3.00, Bottle Stopper Chuck \$5.00

Tee Shirts \$16.00 \$2.00 More for 2X and larger Polo Shirts \$27.00 \$2.00 More for 2X and larger



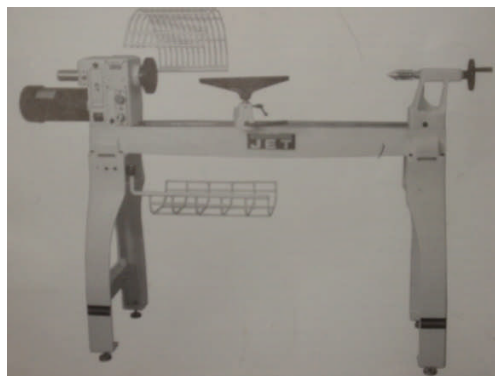
Assorted tool handle
and pen blanks



Lathes for sale!

1. Delta 1440 wood lathe, 8 years old, maybe 30 hours use.- asking \$400.00 or best offer, includes several gouges by Linda Early – Brimfield, Ma. naturesgallery@charter.net cell 508 736-1656
2. Bob Scott { vintagehomesbuildings@verizon.net } “home made” lathe built from “stock” lathe parts. With 4” steel frame bed, a 12” swing, 6 feet between centers, powered by a 3 phase motor with a jack shaft. Bob would like a few hundred for the lathe or a “best offer”.
3. "Very good condition Shopsmith Mark V". [If interested, contact Jeff Keller at 781-878-4540 or by email : Jkeller@nerej.com](mailto:jkeller@nerej.com) <http://boston.craigslist.org/sob/tls/5335254058.html>
- 4 . Jet 1642 lathe

Paul O’Neil has a Jet 1642 lathe with a 16 inch swing and a 42 inch bed for sale. Lathe built in 2009. Price is \$1000. Paul can be reached at marynpaulo@comcast.net



5. Nova 1624-44

Contact Bill Dodge at bill.dodge718@gmail.com

Nova 1624-44 with bed extension Purchased new in May 2013. Runs fine. Has not seen heavy use. Upgraded to another lathe. 1 1/2 HP, 8 speed 214 - 3600 rpm, 44" between centers.

