



# MT 625 / MT 732

CONSTRUCTION/MULTI-PURPOSE telescopic handlers



**BE MANITOU** HANDLING YOUR WORLD

# PERFORMANCE

## POWER and PRECISION

### MAXIMUM LIFT HEIGHT

**19'2" [5.85m]**

### MAXIMUM LIFT CAPACITY

**5,500 lbs. [2495kg]**

### CAPACITY AT MAXIMUM LIFT HEIGHT

**4,400 lbs. [2000kg]**

### 74 HP (55.4 kW)

A Tier IV-certified Kubota engine utilizes diesel particulate filter (DPF) technology, providing 195 ft. lbs. (265 Nm) of torque at 1400 rpm.

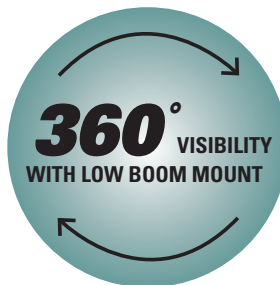


### COMPACT DESIGN

Overall machine height is only 6'4" (1.92 m), with a turning radius of 10'10" (3.31 m), making it easy to maneuver around tight quarters.

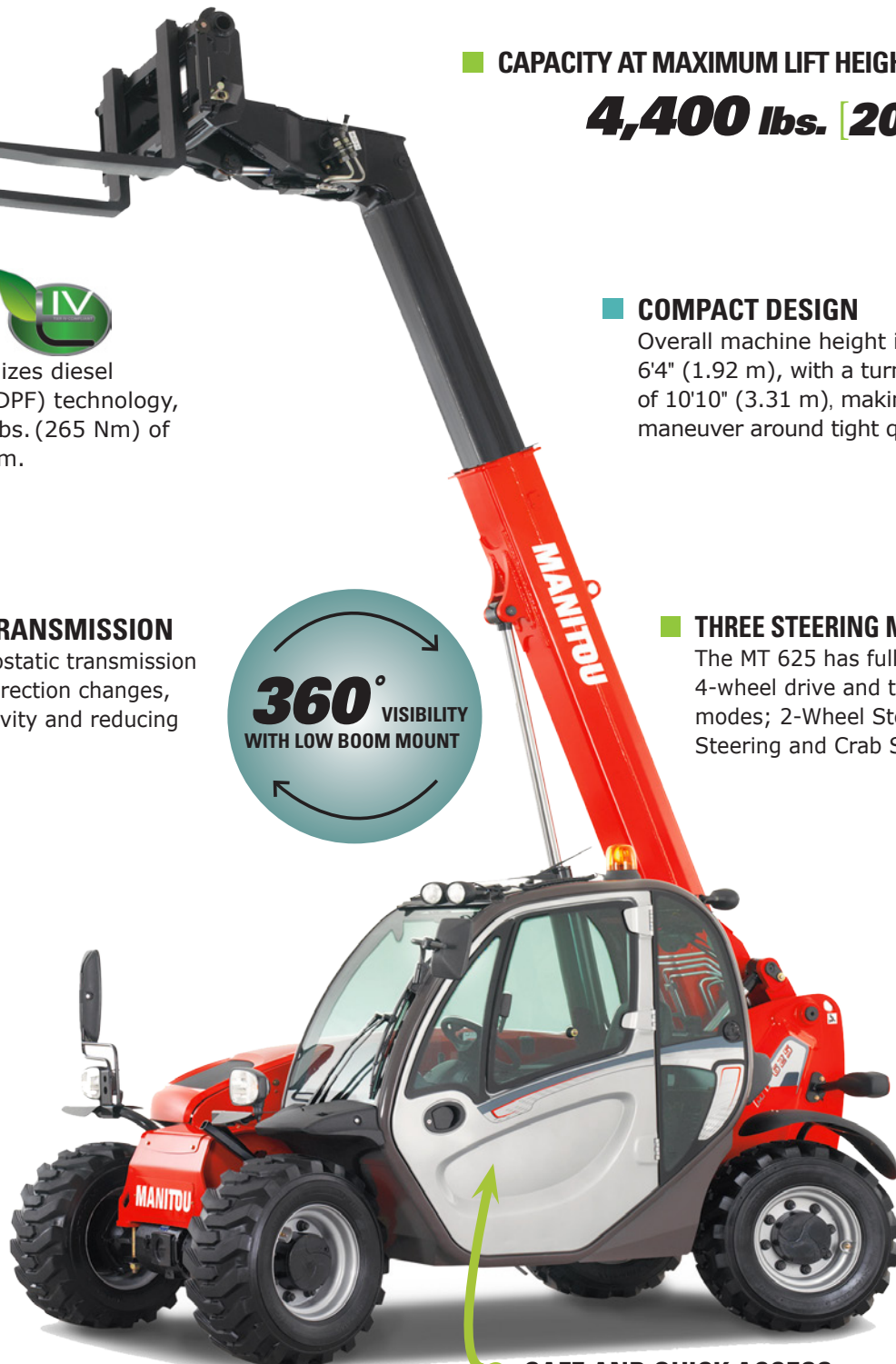
### HYDROSTATIC TRANSMISSION

The 2-speed hydrostatic transmission provides smooth direction changes, increasing productivity and reducing operator fatigue.



### THREE STEERING MODES

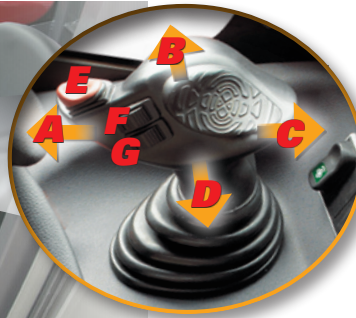
The MT 625 has full-time 4-wheel drive and three steering modes; 2-Wheel Steering, 4-Wheel Steering and Crab Steering.



### SAFE AND QUICK ACCESS

No need for steps, machine is low enough to the ground for quick access.

## ERGONOMICS



### JSM (JOYSTICK, SWITCH & MOVE)

The exclusive Manitou all-in-one joystick allows the left hand to remain on the steering wheel while the right hand controls all machine, boom and hydraulic movement functions.

| Label    | Function  |
|----------|---|
| <b>A</b> | Lower the Boom  |
| <b>B</b> | Tip the Attachment Plate  |
| <b>C</b> | Raise the Boom  |
| <b>D</b> | Tilt the Attachment Plate   |
| <b>E</b> | Forward, Neutral, and Reverse Shift                                       |
| <b>F</b> | Roller for Extending and Retracting the Boom (100% proportional movement) |
| <b>G</b> | Roller for Attachment Function (100% proportional movement)               |

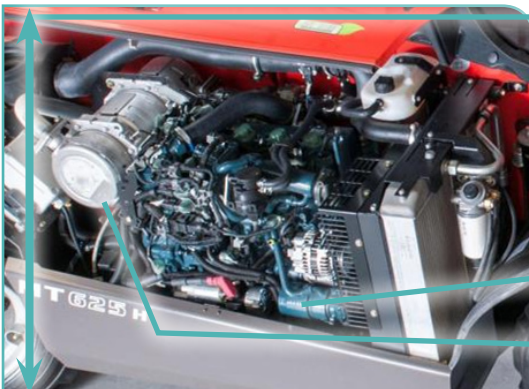
### FULLY-ENCLOSED OR SEMI-ENCLOSED CAB

The fully-enclosed cab includes; heat and defrost with optional air conditioning, front/rear and roof wipers, automotive style and finish, left and right hand mirrors and driver's side window opens for extra ventilation.

Semi-enclosed cab option includes front and rear windows with left side fully open for improved accessibility.

### MULTIFUNCTION SCREEN

Periodic maintenance and machine diagnostics are located on the digital multifunction display. Information includes; wheel alignment indicator, speed indicator, oil and fuel levels, warning lights, DPF regeneration indicators, hour meter and more.



### EASY-OPEN ACCESS

Engine hood lifts out of the way for full access to the engine, filters, gauges, and other maintenance components.

### OIL FILTER & ENGINE DIPSTICK

### DIESEL PARTICULATE FILTER (DPF)



# PERFORMANCE

## ■ POWER and ■ PRECISION

### ■ MAXIMUM LIFT HEIGHT

**22' 8" [6.90m]**

### ■ MAXIMUM LIFT CAPACITY

**7,000 lbs. [3175 kg]**

### ■ CAPACITY AT MAXIMUM LIFT HEIGHT

**5,500 lbs. [2500 kg]**

### ■ MID-SIZE AND COMPACT


The overall machine height of the MT 732 is 7'7" (2.30 m) with a turning radius of 12'6" (3.80 m). The overall machine length is 15'7" (4.76 m).

### ■ THREE STEERING MODES

2-Wheel Steering, 4-Wheel Steering and Crab Steering.

■ PANORAMIC CAB = **360°**  
VISIBILITY

### ■ 74 HP (55.4 kW)

A Tier IV-certified  Deutz engine utilizes diesel particulate filter (DPF) technology, providing 302 ft. lbs. (410 Nm) of torque at 1600 rpm.

### ■ TORQUE CONVERTER TRANSMISSION

The MT 732 operates in full-time 4-Wheel Drive with a 4-speed gearbox torque converter transmission to offer more strength and load stability.

### ○ WIDE ENTRANCE

Large door with one non-slip step.



## ERGONOMICS



### DIGITAL DASHBOARD DISPLAY

Machine diagnostics and engine maintenance indicators are located within the digital display.

### JSM (JOYSTICK, SWITCH & MOVE)

Controls and switches are positioned in groups according to machine function for easy operation, like the MT 625.

### WIDER FULLY-ENCLOSED SPACIOUS CAB

The enclosed cab is wider and longer than the MT 625. The cab includes; heat and defrost with optional air conditioning, left and right hand mirrors, front and rear windshield wipers, and the driver's side window opens for extra ventilation.

### ARMREST AND ADJUSTABLE SEAT

Machine comes standard with a vinyl adjustable seat and armrest storage compartment.

### SIMPLIFIED MAINTENANCE

Full access to engine, transmission, hydraulics, filters and all maintenance components.



### POWER SHUTTLE SHIFTER

The power shuttle shifter is located in front of the JSM joystick to operate the 4-speed gearbox transmission.



### INCREASED GROUND CLEARANCE

The MT 732 offers exceptional ground clearance at 18" (450 mm), for more stability and precise handling on tough working conditions.

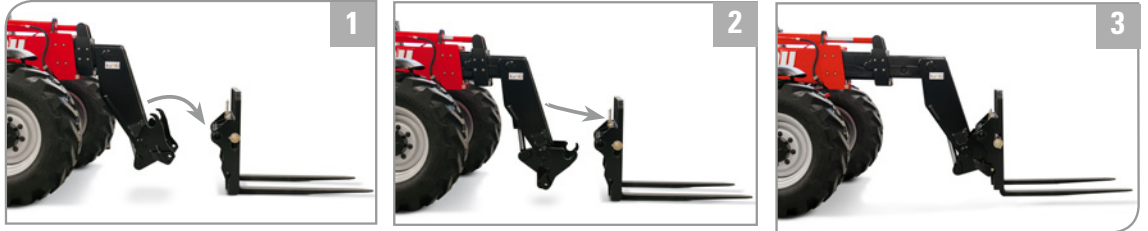


# VERSATILITY

## ATTACHMENTS

### VARIETY OF ATTACHMENTS AVAILABLE

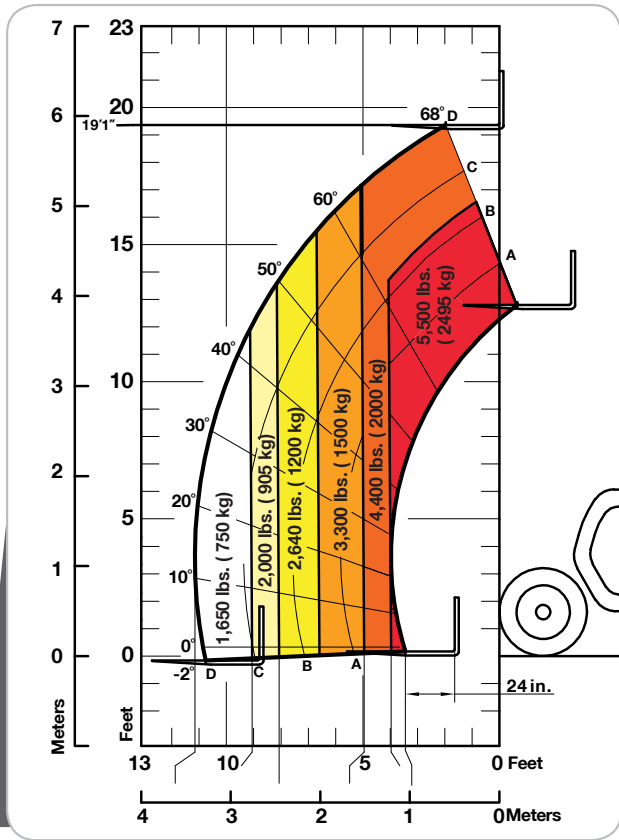
The MANITOU Attachment System makes it easy for the MT 625 and MT 732 to quickly interchange a variety of attachments for multiple applications. The MT 625 also has an optional skid steer interface, to adapt and utilize skid loader attachments.



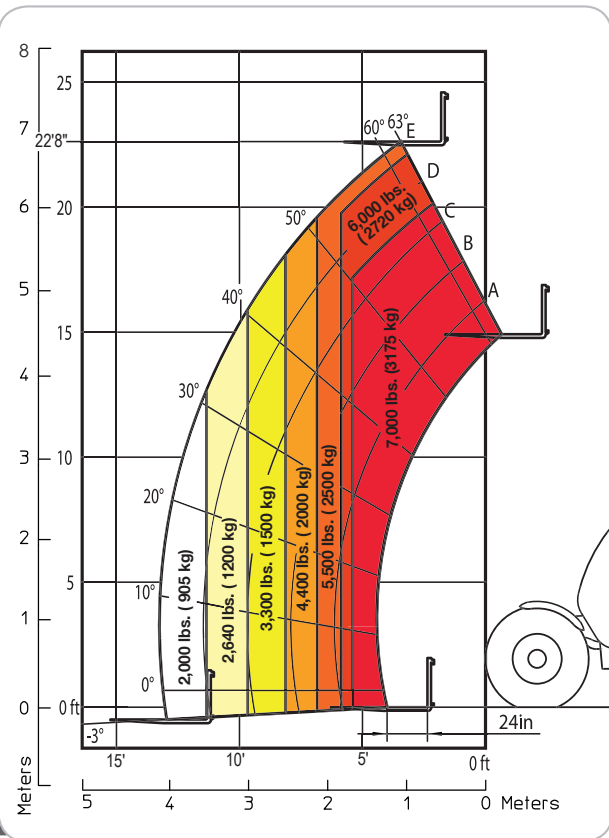
| <b>ATTACHMENT SELECTION</b>  |   | <b>MT 625</b> | <b>MT 732</b> |
|--|---|---------------|---------------|
| <b>CARRIAGES</b>   | Shaft Type Carriage 41" (1041 mm) wide w/ 1.5"x5"x47" (38x127x1193 mm) Forks / Rated 5,500 lbs (2494 kg)              | ●             |               |
|  | Shaft Type Carriage 41" (1041 mm) wide w/ 1.5"x5"x47" (40x125x1200 mm) Forks / Rated 7,700 lbs (3492 kg)              |               | ●             |
|  | Shaft Type Carriage 51" (1300 mm) wide w/ 1.75"x5"x47" (40x125x1200 mm) Forks / Rated 7,700 lbs (3492 kg)             |               | ●             |
|  | Shaft Type Carriage 60" (1524 mm) wide w/ 48" (1219 mm) Load Backrest<br>Rated 5,500 lbs (2494 kg)                    | ●             |               |
|  | Shaft Type Carriage, Rotating (+/- 10 Degrees) 50" (1260 mm) wide with 1.8"x5"x47" Forks / Rated 8,800 lbs. (3992 kg) | ●             |               |
|  | ITA Class II Carriages 40" (1020 mm) wide or 50" (1260 mm) wide, No Load Backrest<br>Rated 5,500 lbs (2494 kg)        | ●             |               |
|  | ITA Class III Carriages 50" (1260 mm) wide or 62" (1580 mm) wide No Load Backrest<br>Rated 7,700 lbs (3492 kg)        |               | ●             |
|  | ITA Class II Side Shifter 50" (1260 mm) wide, No Load Backrest  | ●             |               |
| ITA Class III Side Shifter 50" (1260 mm) wide, No Load Backrest                      |   | ●             |               |
| <b>BUCKETS</b>   | 4 in 1 Bucket includes 5 teeth, 0.9 cu yd (0.7 cu m), 76" (1930 mm) wide  | ●             |               |
|  | 4 in 1 Bucket includes 7 teeth, 1.2 cu yd (0.9 cu m), 96" (2450 mm) wide  |               | ●             |
|  | Construction Bucket (CBR) 1.25 cu yd, 96" (2450 mm) wide. Can not be used with TSDL options.                          |               | ●             |
|  | Light Material Bucket 1 cu yd (0.7 cu m), 73" (1854 mm) wide w/ bolt-on cutting edge                                  | ●             |               |
|  | Rehandling Bucket (CBR), 0.95 cu yd (0.73 cu m), 73" (1850 mm) wide   | ●             |               |
| <b>FORKS AND POSITIONER</b>  | Hydraulic Fork Positioner (ITA Class II Carriages) 42.5" (1079 mm) wide, Rated 5,500 lbs (2,494 kg)                   | ●             |               |
|  | Brick/Block Forks (shaft type carriage) 48" (1219 mm) Length (Pair) 2"x2" (50 x 50 mm)                                | ●             |               |
|  | Pallet Forks (shaft type carriages) 42" (1066 mm) and 48" (1219 mm) Length (Pair) 1.75"x5" (45x125mm)                 | ●             |               |
|  | Pallet Forks (ITA Class II carriages) 47" (1200 mm) Length (Pair) 1.77"x5" (45x125 mm)                                | ●             |               |
| Pallet Forks (ITA Class III carriages) 47" (1200 mm) Length (Pair) 2"x5" (50x125 mm) |   | ●             |               |
| <b>OTHERS</b>  | Universal Skid Steer Interface allows the use of many Skid Steer Attachments  | ●             |               |
|  | Sweeper (BRB 1600), 78.75" (2000 mm) wide requires return line to tank  | ●             |               |
|  | Jib with 1 Hook (P600), Capacity - 1300 lbs. (600 kg)   |               | ●             |
|  | Jib with 2 Hooks (P4000), Capacity - 8,800 lbs. (4,000 kg)  |               | ●             |
|  | Load Backrest 40" (1020 mm) and 50" (1260 mm) for ITA Class II carriages  | ●             |               |
|  | Load Backrest 50" (1260 mm) and 62" (1580 mm) for ITA Class III carriages   |               | ●             |

## MT 625 / 732 CONSTRUCTION TELESCOPIC HANDLER LOAD CHARTS

Load charts are based on 24" (600 mm) load center per ANSI/ITSDF B56.6



MT 625



MT 732



# MT 625 / 732 CONSTRUCTION TELESCOPIC HANDLER SPECIFICATIONS & DIAGRAMS

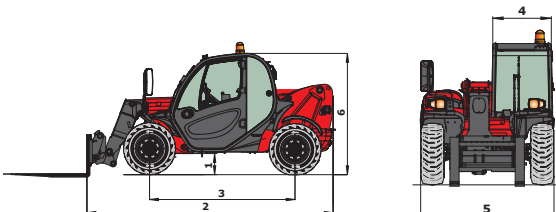
## STANDARD FEATURES








- 4-Wheel Drive
- Tier IV-Certified
- Automatic Parking Brake
- Back-Up Alarm and Horn
- Battery Cut-Off
- Complete Road Lights
- Cyclonic Pre-Cleaner
- Enclosed Cab with Heat/Defrost or Semi-Enclosed Cab on MT 625
- Front/Rear Wipers
- Full Instrumentation
- Hydraulic Steering
- Hydrostatic Transmission
- JSM® Joystick Controls- Loader Type
- Lockable Engine Compartment
- One Auxiliary Circuit to Boom Tip
- Quick-Fit Tool System
- RH & LH Mirrors
- Roof and Windshield Sunshade
- Three Steering Modes
- Vinyl Seat with Seat Belt

## OPTIONAL FEATURES

- Air Conditioning\*
- Centralized Grease Points (MT 625 ONLY)
- Comfort Ride Control (CRC)
- Dual Hydraulic Auxiliary System\*
- Hand Throttle Control\* (MT 625 ONLY)
- Hydraulic Locking / Quick Disconnect
- Manual Tow Hitch
- Return to Hydraulic Tank Line
- Windshield Protector- Front Window
- Work Lights - Two on Boom\*

\*Options not available with Semi-Enclosed Cab



|                 |   | MT 625                                       | MT 732             |                     |
|-----------------|---|--|--------------------|---------------------|
| KEY PERFORMANCE |    | Maximum Lift Capacity – 24" Load Center (kg) | 5,500 lbs. (2495)  | 7,000 lbs. (3175)   |
|                 |   | Maximum Lift Height (m)                      | 19'2" (5.85)       | 22'8" (6.90)        |
|                 |   | Capacity at Maximum Lift Height (kg)         | 4,400 lbs. (2000)  | 5,500 lbs. (2500)   |
|                 |   | Maximum Forward Reach (m)                    | 11'1" (3.40)       | 13'3" (4.04)        |
|                 |   | Capacity at Maximum Reach (kg)               | 1,650 lbs. (750)   | 2,000 lbs. (905)    |
|                 |   | Cycle Times – Unloaded                       |                    |                     |
|                 |   | Lifting                                      | 8.0 sec.           | 6.8 sec.            |
|                 |   | Lowering                                     | 5.4 sec.           | 5.8 sec.            |
|                 |   | Boom Extension                               | 5.6 sec.           | 6.8 sec.            |
|                 |   | Boom Retraction                              | 4.3 sec.           | 4.7 sec.            |
| ENGINE          |    | Type   | Kubota Tier IV     | Deutz Tier IV       |
|                 |   | Power (kW)                                   | 74 hp (55.4)       | 74 hp (55.4)        |
|                 |   | Displacement (cm³) 4 cyl.                    | 203 cu. in. (3331) | 221 cu. in. (3621)  |
|                 |   | Maximum Torque @ 1400 rpm (Nm)               | 195 ft.lbs. (265)  | 302 ft.lbs. (410)   |
|                 |   | Injection / Cooling                          | Direct / Water     | Electronic / Water  |
| TRANSMISSION    |    | Type   | Hydrostatic        | Torque Converter    |
|                 |   | Maximum Travel Speed (km/hr)                 | 15.5 mph (25)      | 15.5 mph (25)       |
| HYDRAULICS      |   | Pump Type                                    | Gear               | Gear                |
|                 |   | Pressure (bar)                               | 3408 psi (235)     | 3822 psi (260)      |
|                 |   | Flow Rate (L/min.)                           | 23 gpm (87)        | 27.5 gpm (104)      |
| CAPACITIES      |  | Hydraulic Oil (L)                            | 30.3 gal. (115)    | 33.8 gal. (128)     |
|                 |   | Fuel Tank (L)                                | 16.6 gal. (63)     | 31.7 gal. (120)     |
| SPECIFICATIONS  |  | Weight – with Forks (kg)                     | 10,582 lbs. (4800) | 14,947 lbs. (6,780) |
|                 |   | Turning Radius (m)                           | 10'10" (3.31)      | 12'6" (3.80)        |
|                 |   | 1. Ground Clearance (mm)                     | 13" (330)          | 18" (450)           |
|                 |   | 2. Overall Length (m)                        | 12'9" (3.89)       | 15'7" (4.76)        |
|                 |   | 3. Wheel Base (m)                            | 7'6" (2.30)        | 9'3" (2.81)         |
|                 |   | 4. Cab Width (mm)                            | 2'7" (797)         | 2'11" (890)         |
|                 |   | 5. Overall Width (m)                         | 5'11" (1.81)       | 7'8" (2.34)         |
|                 |   | 6. Overall Height (m)                        | 6'4" (1.92)        | 7'7" (2.30)         |
|                 |   | Breakout Force (daN)                         | 7,704 lbf. (3427)  | 12,971 lbf. (5770)  |
|                 |   | Maximum Drawbar Pull (daN)                   | 7,261 lbf. (3230)  | 11,982 lbf. (5300)  |
| TIRES           |  | 12-16.5 12PR                                 | 400/80 R24         |                     |

This publication in no way constitutes an offer and the company reserves the right to alter specifications without notice.

