



Multi V™
GEN 4 indoor
units

New for 2015

With LG, it's all possible.™



LG

Life's Good

Specifications



WALL MOUNTED

Model Number	ARNU*****L4	053SB	073SB	093SB	123SB	153SB	183SC	243SC
Capacity	Cooling Btu/h	5,500	7,500	9,600	12,300	15,400	19,100	24,200
	Heating Btu/h	6,100	8,500	10,900	13,600	17,100	21,500	27,300
Power Input	Watts	21	21	21	21	21	39.5	39.5
Power Supply	V/Hz/ø	208-230 / 60 / 1	208-230 / 60 / 1	208-230 / 60 / 1	208-230 / 60 / 1	208-230 / 60 / 1	208-230 / 60 / 1	208-230/60/1
Dimensions (WxDxH)	Body inch	35.3 x 8.3 x 11.4	35.3 x 8.3 x 11.4	35.3 x 8.3 x 11.4	35.3 x 8.3 x 11.4	35.3 x 8.3 x 11.4	40.6 x 9.9 x 12.8	40.6 x 9.9 x 12.8
	Grille inch							
Weight	lbs	22	22	22	22	22	31	31
Sound Pressure	H/M/L dBA	32 / 30 / 28	32 / 30 / 28	34 / 31 / 30	40 / 34 / 31	42 / 40 / 34	40 / 35 / 31	45 / 40 / 35
Air Flow Rate Standard Mode	H/M/L CFM	230 / 210 / 194	247 / 230 / 194	290 / 247 / 194	336 / 290 / 230	371 / 318 / 247	441 / 424 / 399	494 / 449 / 406
Grille		PT-UUC	PT-UUC	PT-UUC	PT-UTC	PT-UTC	PT-HLC1	PT-HLC1



1-WAY CEILING CASSETTE



2-WAY CEILING CASSETTE

Model Number	ARNU*****C4	1-Way Ceiling Cassette					2-Way Ceiling Cassette	
		073TU	093TU	123TU	183TT	243TT	183TL	243TL
Capacity	Cooling Btu/h	7,500	9,600	12,300	19,100	24,200	19,100	24,200
	Heating Btu/h	8,500	10,900	13,600	21,500	24,200	21,500	27,300
Power Input	Watts	40	40	40	70	70	70	70
Power Supply	V/Hz/ø	208-230 / 60 / 1	208-230 / 60 / 1	208-230 / 60 / 1	208-230 / 60 / 1	208-230 / 60 / 1	208-230 / 60 / 1	208-230 / 60 / 1
Dimensions (WxDxH)	Body inch	33.8 x 16.1 x 5.4	33.8 x 16.1 x 5.4	33.8 x 16.1 x 5.4	52.5 x 17.8 x 6.98	52.5 x 17.8 x 6.98	32.6 x 21.6 x 8.9	32.6 x 21.6 x 8.9
	Grille inch	42.1 x 18.9 x 0.8	42.1 x 18.9 x 0.8	42.1 x 18.9 x 0.8	55.9 x 19.7 x 1.4	55.9 x 19.7 x 1.4	41.3 x 25.2 x 1.1	41.3 x 25.2 x 1.1
Weight	lbs	33	33	33	42	42	49	49
Sound Pressure	H/M/L dBA	32 / 29 / 25	35 / 34 / 32	38 / 35 / 32	40 / 37 / 35	43 / 40 / 36	40 / 36 / 32	42 / 38 / 34
Air Flow Rate Standard Mode	H/M/L CFM	290 / 258 / 226	325 / 304 / 290	353 / 325 / 290	470 / 427 / 385	515 / 470 / 406	459 / 424 / 353	601 / 530 / 459
Grille		PT-UUC	PT-UUC	PT-UUC	PT-UTC	PT-UTC	PT-HLC1	PT-HLC1

Notes:

1. The Power Input is rated at high speed.
2. Sound Pressure levels are tested in an anechoic chamber under ISO Standard 3745.
3. Due to our policy of innovation, some specifications may be changed without notification.



4-WAY CEILING CASSETTE

Model Number	ARNU****C4	053TR	073TR	093TR	123TR	153TQ	
Capacity	Cooling	Btu/h	5,500	7,500	9,600	12,300	15,400
	Heating	Btu/h	6,100	8,500	10,900	13,600	17,100
Power Input		Watts	30	30	30	30	30
Power Supply		V/Hz/ø	208-230 / 60 / 1	208-230 / 60 / 1	208-230 / 60 / 1	208-230 / 60 / 1	208-230 / 60 / 1
Dimensions (WxDxH)	Body	inch	22.4 x 22.4 x 8.4	22.4 x 22.4 x 8.4	22.4 x 22.4 x 8.4	22.4 x 22.4 x 8.4	22.4 x 22.4 x 10.1
	Grille	inch	27.5 x 27.5 x 0.9	27.5 x 27.5 x 0.9	27.5 x 27.5 x 0.9	27.5 x 27.5 x 0.9	27.5 x 27.5 x 0.9
Weight		lbs	29	29	32	32	35
Sound Pressure	H/M/L	dBA	29 / 27 / 26	29 / 27 / 26	30 / 29 / 27	32 / 30 / 27	36 / 34 / 32
Air Flow Rate Standard Mode	H/M/L	CFM	265 / 247 / 212	265 / 247 / 212	283 / 265 / 251	307 / 283 / 247	388 / 353 / 328
Grille			PT-UQC	PT-UQC	PT-UQC	PT-UQC	PT-UQC

Model Number	ARNU****C4	183TQ	243TP	283TP	363TN	423TM	483TM	
Capacity	Cooling	Btu/h	19,100	24,200	28,000	36,200	42,000	48,100
	Heating	Btu/h	21,500	27,300	31,500	40,600	43,800	51,200
Power Input		Watts	30	33	33	144	144	144
Power Supply		V/Hz/ø	208-230 / 60 / 1	208-230 / 60 / 1	208-230 / 60 / 1	208-230 / 60 / 1	208-230 / 60 / 1	208-230 / 60 / 1
Dimensions (WxDxH)	Body	inch	22.4 x 22.4 x 10.1	33 x 33 x 8	33 x 33 x 8	33 x 33 x 9.7	33 x 33 x 11.3	33 x 33 x 11.3
	Grille	inch	27.5 x 27.5 x 0.9	37.4 x 37.4 x 1.4	37.4 x 37.4 x 1.4	37.4 x 37.4 x 1.4	37.4 x 37.4 x 1.4	37.4 x 37.4 x 1.4
Weight		lbs	35	48	48	54	59	59
Sound Pressure	H/M/L	dBA	37 / 35 / 34	36 / 34 / 31	39 / 35 / 33	44 / 41 / 38	45 / 41 / 38	46 / 42 / 40
Air Flow Rate Standard Mode	H/M/L	CFM	396 / 388 / 353	600 / 530 / 459	671 / 565 / 494	883 / 777 / 706	1,059 / 918 / 812	1,130 / 953 / 883
Grille			PT-UQC	PT-UMC	PT-UMC	PT-UMC	PT-UMC	PT-UMC

Notes:

1. The Power Input is rated at high speed.
2. Sound Pressure levels are tested in an anechoic chamber under ISO Standard 3745.
3. Due to our policy of innovation, some specifications may be changed without notification.

Specifications



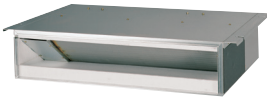
CEILING CONCEALED HIGH STATIC

Model Number	ARNU****A4	073BG	093BG	123BG	153BG	183BG	243BG	
Capacity	Cooling	Btu/h	7,500	9,600	12,300	15,400	19,100	24,200
	Heating	Btu/h	8,500	10,900	13,600	17,100	21,500	27,300
Power Input		Watts	450	450	450	450	450	450
Power Supply		V/Hz/ø	208-230 / 60 / 1	208-230 / 60 / 1	208-230 / 60 / 1	208-230 / 60 / 1	208-230 / 60 / 1	208-230 / 60 / 1
Dimensions (WxDxH)	Body	inch	46.6 x 17.8 x 11.8	46.6 x 17.8 x 11.8	46.6 x 17.8 x 11.8	53.0 x 19.2 x 11.7	53.0 x 19.2 x 11.7	53.0 x 19.2 x 11.7
Weight		lbs	83.8	83.8	83.8	83.8	83.8	83.8
Sound Pressure	H/M/L	dBA	35 / 35 / 34	35 / 35 / 34	36 / 35 / 34	37 / 36 / 33	41 / 39 / 37	42 / 39 / 37
Air Flow Rate Standard Mode	H/M/L	CFM	516 / 484 / 434	533 / 484 / 434	586 / 533 / 484	477 / 427 / 318	547 / 470 / 427	671 / 576 / 547
External Static Pressure		in wg	0.15	0.15	0.15	0.23	0.23	0.23
Air Flow Rate High Mode	H/M/L	CFM	441 / 406 / 332	452 / 406 / 332	477 / 427 / 332	487 / 417 / 293	537 / 487 / 417	671 / 537 / 487
External Static Pressure		in wg	0.23	0.23	0.23	0.31	0.31	0.31

Model Number	ARNU****A4	283BG	363BG	423BG	483BR	543BR	763B8	963B8	
Capacity	Cooling	Btu/h	28,000	36,200	42,000	48,100	54,000	76,400	95,900
	Heating	Btu/h	31,500	40,600	43,800	51,200	61,400	86,000	107,500
Power Input		Watts	450	450	450	450	450	800	800
Power Supply		V/Hz/ø	208-230 / 60 / 1	208-230 / 60 / 1	208-230 / 60 / 1	208-230 / 60 / 1	208-230 / 60 / 1	208-230 / 60 / 1	208-230 / 60 / 1
Dimensions (WxDxH)	Body	inch	53.0 x 19.2 x 11.7	53.0 x 19.2 x 11.7	53.0 x 19.2 x 11.7	48.5 x 23.6 x 15.0	48.5 x 23.6 x 15.0	68.2 x 28.6 x 18.1	68.2 x 28.6 x 18.1
Weight		lbs	83.8	83.8	83.8	112	112	192	192
Sound Pressure	H/M/L	dBA	42 / 41 / 40	44 / 43 / 42	45 / 44 / 44	45 / 43 / 41	46 / 45 / 43	50 / 48 / 48	52 / 50 / 50
Air Flow Rate Standard Mode	H/M/L	CFM	1,130 / 1,003 / 961	1,003 / 894 / 770	893 / 770 / 622	1,568 / 1,395 / 1,183	1,819 / 1,678 / 1,395	2,050 / 1,766 / 1,766	2,684 / 2,260 / 2,260
External Static Pressure		in wg	0.31	0.31	0.31	0.39	0.39	0.59	0.59
Air Flow Rate High Mode	H/M/L	CFM	1,218 / 1,141 / 1,084	1,141 / 1,024 / 894	915 / 851 / 770	1,582 / 1,434 / 1,176	1,801 / 1,582 / 1,434	2,260 / 1,766 / 1,766	2,542 / 2,260 / 2,260
External Static Pressure		in wg	0.39	0.39	0.39	0.55	0.55	0.86	0.87

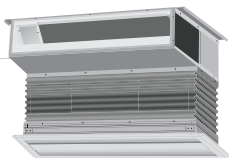
Notes:

1. The Power Input is rated at high speed.
2. Sound Pressure levels are tested in an anechoic chamber under ISO Standard 3745.
3. Due to our policy of innovation, some specifications may be changed without notification.



CEILING CONCEALED LOW STATIC

Model Number	ARNU****G4	073L1	093L1	123L2	153L2	183L2	243L3	
Capacity	Cooling	Btu/h	7,500	9,600	12,300	15,400	19,100	24,200
	Heating	Btu/h	8,500	10,900	13,600	17,100	21,500	27,300
Power Input		Watts	85	85	85	85	85	115
Power Supply		V/Hz/ø	208-230 / 60 / 1	208-230 / 60 / 1	208-230 / 60 / 1	208-230 / 60 / 1	208-230 / 60 / 1	208-230 / 60 / 1
Dimensions (WxDxH)	Body	inch	32.3 x 22.6 x 7.5	32.3 x 22.6 x 7.5	32.3 x 22.6 x 7.5	32.3 x 22.6 x 7.5	43.3 x 22.6 x 7.5	43.3 x 22.6 x 7.5
Weight		lbs	46	46	46	46	57	57
Sound Pressure	H/M/L	dBA	33 / 32 / 29	34 / 33 / 32	35 / 34 / 33	41 / 40 / 37	43 / 40 / 37	46 / 43 / 37
Air Flow Rate Standard Mode	H/M/L	CFM	283 / 229 / 194	318 / 247 / 212	353 / 283 / 229	388 / 353 / 283	494 / 424 / 353	600 / 530 / 353
External Static Pressure		in wg	0	0	0	0	0	0
Air Flow Rate High Mode	H/M/L	CFM	283 / 229 / 194	318 / 247 / 212	353 / 283 / 229	388 / 353 / 283	494 / 424 / 353	600 / 530 / 353
External Static Pressure		in wg	0.08	0.08	0.08	0.08	0.08	0.08



CEILING CONCEALED BUILT-IN

Model Number	ARNU****G4	073B3	093B3	123B3	153B3	183B4	243B4	
Capacity	Cooling	Btu/h	7,500	9,600	12,300	15,400	19,100	24,000
	Heating	Btu/h	8,500	10,900	13,600	17,100	21,500	27,300
Power Input		Watts	40	40	85	85	85	115
Power Supply		V/Hz/ø	208-230 / 60 / 1	208-230 / 60 / 1	208-230 / 60 / 1	208-230 / 60 / 1	208-230 / 60 / 1	208-230 / 60 / 1
Dimensions (WxDxH)	Body	inch	32.3 x 21.7 x 7.5	32.3 x 21.7 x 7.5	32.3 x 21.7 x 7.5	32.3 x 21.7 x 7.5	43.3 x 21.7 x 7.5	43.3 x 21.7 x 7.5
Weight		lbs	39	39	51	51	51	60
Sound Pressure	H/M/L	dBA	27 / 26 / 23	30 / 26 / 23	31 / 29 / 26	34 / 31 / 29	36 / 34 / 31	39 / 35 / 32
Air Flow Rate Standard Mode	H/M/L	CFM	270 / 230 / 200	320 / 250 / 200	360 / 310 / 250	450 / 360 / 310	530 / 450 / 360	710 / 570 / 430
External Static Pressure		in wg	0	0	0	0	0	0
Air Flow Rate High Mode	H/M/L	CFM	270 / 230 / 200	320 / 250 / 200	360 / 310 / 250	450 / 360 / 310	530 / 450 / 360	710 / 570 / 430
External Static Pressure		in wg	0.1	0.1	0.1	0.1	0.1	0.1

Notes:

1. The Power Input is rated at high speed.
2. Sound Pressure levels are tested in an anechoic chamber under ISO Standard 3745.
3. Due to our policy of innovation, some specifications may be changed without notification.

Specifications



FLOOR STANDING - WITH CASE

Model Number	ARNU****A4	073CE	093CE	123CE	153CE	183CF	243CF	
Capacity	Cooling	Btu/h	7,500	9,600	12,300	15,400	19,100	24,200
	Heating	Btu/h	8,500	10,900	13,600	17,100	21,500	27,300
Power Input		Watts	85	85	85	85	115	115
Power Supply		V/Hz/ø	208-230 / 60 / 1	208-230 / 60 / 1	208-230 / 60 / 1	208-230 / 60 / 1	208-230 / 60 / 1	208-230 / 60 / 1
Dimensions (WxDxH)	Body	inch	42.2 x 8.0 x 25.0	42.2 x 8.0 x 25.0	42.2 x 8.0 x 25.0	42.2 x 8.0 x 25.0	52.9 x 8.0 x 25.0	52.9 x 8.0 x 25.0
Weight		lbs	60	60	60	60	75	75
Sound Pressure	H/M/L	dBA	35 / 33 / 31	36 / 34 / 32	37 / 35 / 33	38 / 37 / 35	40 / 37 / 34	43 / 40 / 37
Air Flow Rate Standard Mode	H/M/L	CFM	300 / 265 / 229	335 / 300 / 265	371 / 335 / 300	406 / 353 / 335	565 / 494 / 424	635 / 565 / 494



FLOOR STANDING - WITHOUT CASE

Model Number	ARNU****U4	073CE	093CE	123CE	153CE	183CF	243CF	
Capacity	Cooling	Btu/h	7,500	9,600	12,300	15,400	19,100	24,200
	Heating	Btu/h	8,500	10,900	13,600	17,100	21,500	27,300
Power Input		Watts	85	85	85	85	115	115
Power Supply		V/Hz/ø	208-230 / 60 / 1	208-230 / 60 / 1	208-230 / 60 / 1	208-230 / 60 / 1	208-230 / 60 / 1	208-230 / 60 / 1
Dimensions (WxDxH)	Body	inch	38.5 x 7.9 x 25.2	38.5 x 7.9 x 25.2	38.5 x 7.9 x 25.2	38.5 x 7.9 x 25.2	49.5 x 7.5 x 25.2	49.5 x 7.5 x 25.2
Weight		lbs	46	46	46	46	58	58
Sound Pressure	H/M/L	dBA	35 / 33 / 31	36 / 34 / 32	37 / 35 / 33	38 / 37 / 35	40 / 37 / 34	43 / 40 / 37
Air Flow Rate Standard Mode	H/M/L	CFM	300 / 265 / 229	335 / 300 / 265	371 / 335 / 300	406 / 353 / 335	565 / 494 / 424	635 / 565 / 494

Notes:

1. The Power Input is rated at high speed.
2. Sound Pressure levels are tested in an anechoic chamber under ISO Standard 3745.
3. Due to our policy of innovation, some specifications may be changed without notification.



VERTICAL AIR HANDLER

Specifications

Model Number	ARNU****A4		123NJ	183NJ	243NJ	303NJ
Capacity	Cooling	Btu/h	12,000	18,000	24,000	30,000
	Heating	Btu/h	13,500	20,000	27,000	34,000
Power Input		Watts	80	80	120	178
Power Supply		V/Hz/ø	208-230 / 60 / 1	208-230 / 60 / 1	208-230 / 60 / 1	208-230 / 60 / 1
Dimensions (WxDxH)	Body	inch	18 x 21.3 x 48.6	18 x 21.3 x 48.6	18 x 21.3 x 48.6	18 x 21.3 x 48.6
Weight		lbs	117	117	117	117
Sound Pressure	H/M/L	dBA	42 / 41 / 39	42 / 42 / 41	43 / 42 / 41	44 / 43 / 42
Air Flow Rate Standard Mode	H/M/L	CFM	530 / 480 / 380	580 / 530 / 480	710 / 640 / 480	880 / 800 / 630
External Static Pressure		in wg	0.3	0.3	0.3	0.3
Air Flow Rate High Mode	H/M/L	CFM	530 / 480 / 380	580 / 530 / 480	710 / 640 / 480	880 / 800 / 630
External Static Pressure		in wg	0.5	0.5	0.5	0.5

Model Number	ARNU****A4		363NJ	423NK	483NK	543NK
Capacity	Cooling	Btu/h	36,000	42,000	48,000	54,000
	Heating	Btu/h	40,000	46,000	54,000	60,000
Power Input		Watts	228	260	330	336
Power Supply		V/Hz/ø	208-230 / 60 / 1	208-230 / 60 / 1	208-230 / 60 / 1	208-230 / 60 / 1
Dimensions (WxDxH)	Body	inch	18 x 21.3 x 48.6	25 x 21-3/8 x 55-1/8	25 x 21-3/8 x 55-1/8	25 x 21-3/8 x 55-1/8
Weight		lbs	121	165	165	165
Sound Pressure	H/M/L	dBA	45 / 44 / 43	46 / 44 / 41	49 / 47 / 41	50 / 49 / 47
Air Flow Rate Standard Mode	H/M/L	CFM	990 / 880 / 800	1,250 / 1,100 / 1,000	1,400 / 1,260 / 1,000	1,475 / 1,400 / 1,260
External Static Pressure		in wg	0.3	0.3	0.3	0.3
Air Flow Rate High Mode	H/M/L	CFM	990 / 880 / 800	1,250 / 1,100 / 1,000	1,400 / 1,260 / 1,000	1,475 / 1,400 / 1,260
External Static Pressure		in wg	0.5	0.5	0.5	0.5

Notes:

1. The Power Input is rated at high speed.
2. Sound Pressure levels are tested in an anechoic chamber under ISO Standard 3745.
3. Due to our policy of innovation, some specifications may be changed without notification.

About LG VRF Technology

Variable Refrigerant Flow technology is designed to maximize operational efficiency and provide sustainable energy benefits. LG VRF systems are engineered to save on the cost of ducts, distribution fans, water pumps and water piping. VRF systems have a low life-cycle cost compared to other technology on the market today.

Why LG VRF?

The benefits are numerous: less piping for installers, energy efficiency for owners, and modern indoor units that complement every setting. Sound levels of LG VRF products are among the lowest in the industry, so units can be installed where noise is an issue. Inverter scroll compressors manufactured by LG optimize system energy efficiency.

Features*

- 1) Multiple auxiliary heating schemes available
- 2) Individual power consumption display
- 3) Communication speed is 8 times faster than previous generation
- 4) Compatible to use with previous generation indoor units
- 5) Allows commissioning in cool mode and heat mode

Design additions to be included

- 1) New style wall mount units, including 5,000 BTU/h capacity
- 2) New 18,000 BTU/h and 24,000 BTU/h capacities for 1-way cassettes
- 3) New true 2x2 cassette panel and new grille design

*May require additional accessory

For use with Multi V IV air source heat pump and heat recovery systems.
Compatibility with Multi V Water IV heat pump and heat recovery systems coming summer 2015.



LG Electronics USA, Inc.
11405 Old Roswell Road
Alpharetta, GA 30009
www.lg-vrf.com

