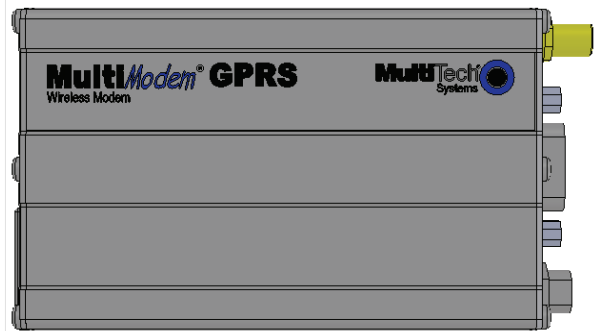


---

# MultiModem<sup>®</sup> GPRS Wireless Modem

MTCBA-G-F4



## User Guide

**MultiModem® GPRS User Guide**  
**Wireless Modem**  
**MTCBA-G-F4**  
**S000443B, Revision B**

### Copyright

This publication may not be reproduced, in whole or in part, without prior expressed written permission from Multi-Tech Systems, Inc. All rights reserved.

Copyright © 2007- 08 by Multi-Tech Systems, Inc.

Multi-Tech Systems, Inc. makes no representation or warranties with respect to the contents hereof and specifically disclaims any implied warranties of merchantability or fitness for any particular purpose. Furthermore, Multi-Tech Systems, Inc. reserves the right to revise this publication and to make changes from time to time in the content hereof without obligation of Multi-Tech Systems, Inc., to notify any person or organization of such revisions or changes. Check Multi-Tech's Web site for current versions of our product documentation.

### Revision History

Revision	Date	Description
A	10/03/07	Initial Release
B	11/19/08	Remove fax requirements and minor editorial changes.

### Trademarks and Logos

The Multi-Tech logo and *MultiModem* are registered trademarks of Multi-Tech Systems, Inc. Windows is a registered trademark of Microsoft in the U.S. and other countries. Other trademarks and trade names mentioned in this publication belong to their respective owners.

### World Headquarters

Multi-Tech Systems, Inc.  
2205 Woodale Drive  
Mounds View, Minnesota 55112  
Phone: 763-785-3500 or 800-328-9717  
Fax: 763-785-9874  
Internet Address: <http://www.multitech.com>

### Technical Support

Country	By Email	By Phone
Europe, Middle East, Africa:	<a href="mailto:support@multitech.co.uk">support@multitech.co.uk</a>	+(44) 118 959 7774
U.S., Canada, all others:	<a href="mailto:support@multitech.com">support@multitech.com</a>	800-972-2439 or 763-717-5863

### Warranty

Warranty information can be found at: <http://www.multitech.com>

# Contents

<b>Chapter 1 – Product Description and Specifications</b> .....	<b>4</b>
<b>Product Description</b> .....	<b>4</b>
<b>Features</b> .....	<b>4</b>
<b>Safety</b> .....	<b>5</b>
General Safety.....	5
RF Interference Issues.....	5
Installation Instructions and Hazardous Locations Warnings.....	5
Vehicle Safety.....	5
Maintenance of Your Modem.....	6
Your Responsibility.....	6
<b>Package Contents</b> .....	<b>6</b>
<b>General Specifications</b> .....	<b>7</b>
<b>Functions – GSM/GPRS Modes</b> .....	<b>7</b>
<b>Electrical Specifications</b> .....	<b>7</b>
<b>RF Specifications</b> .....	<b>8</b>
<b>Antenna Specifications</b> .....	<b>8</b>
GSM/EGSM Antenna Requirements/Specifications.....	8
Antennas Available from Multi-Tech Systems, Inc.....	8
PTCRB Requirements Note.....	8
FCC Requirements Note.....	8
<b>Interfaces</b> .....	<b>8</b>
LEDs.....	8
<b>RS232 15-Pin Connector Pinout</b> .....	<b>9</b>
<b>AT Command Information</b> .....	<b>9</b>
<b>Chapter 2 – Activation and Installation</b> .....	<b>10</b>
<b>Activate Your Wireless Account</b> .....	<b>10</b>
<b>Insert the SIM Card into the Holder</b> .....	<b>10</b>
<b>Hook up the Antenna, Serial Cable, and Power</b> .....	<b>11</b>
<b>Optional – Attach the Modem to a Flat Surface</b> .....	<b>12</b>
<b>Install the Modem Driver</b> .....	<b>13</b>
<b>Chapter 3 – Using Your Wireless Modem</b> .....	<b>18</b>
<b>Phone Numbers for the Wireless Modem</b> .....	<b>18</b>
<b>Examples of Useful AT Commands</b> .....	<b>18</b>
Verifying Signal Strength.....	18
Checking Network Registration and Roaming Status.....	18
Checking the Modem’s Identity.....	18
Establishing a Voice Call.....	19
Establishing a Circuit-Switched Data (CSD) Connection.....	19
Answering a Circuit-Switched Data (CSD) Connection.....	19
<b>Using Short Message Services (SMS)</b> .....	<b>20</b>
SMS Examples.....	21
<b>Internet Access</b> .....	<b>23</b>
Connecting to the GPRS Network for Internet Access.....	23
<b>Chapter 4 – Troubleshooting and Frequently Asked Questions</b> .....	<b>25</b>
<b>Troubleshooting Examples</b> .....	<b>25</b>
<b>Frequently Asked Questions</b> .....	<b>26</b>
<b>Appendix A – Cables</b> .....	<b>28</b>
Data Cable Diagram – No Voice.....	28
Data Cable Diagram – with Voice.....	29
Fused DC Power Cable Dimensions.....	29
How to Change the Fuse.....	29
<b>Appendix B - Waste Electrical and Electronic Equipment (WEEE) Statement</b> .....	<b>30</b>

# Chapter 1 – Product Description and Specifications

## Product Description

The Multi-Tech MultiModem® GPRS is an external data/fax/voice wireless modem. It also supports mobile originated short message service (SMS) and mobile-terminated SMS. It offers standards-based multi-band GPRS Class 10 performance. This ready-to-deploy, standalone modem allows developers to add wireless communication to products with a minimum of development time and expense. The MultiModem GPRS Wireless Modem is based on industry-standard open interfaces, is fully type approved, and can be desktop or panel mounted.

### Other Product Codes:

**NAM** is the model for US and Canada

**GB/IE** is the model for Great Britain and Ireland

**Euro/ROW** is the model for Europe and the rest of the world

### A Note About Documentation:

Multi-Tech Systems, Inc. reserves the right to revise this publication and to make changes from time to time in the content hereof without obligation of Multi-Tech Systems, Inc., to notify any person or organization of such revisions or changes. Check Multi-Tech's Web site for current versions of our product documentation.

## Features

• GPRS Class 10 operation
• Quad-band 850/900/1800/1900
• GSM Class 1 and Class 2
• Desktop or panel mounting
• Short Message Services including text and PDU, point-to-point, cell broadcast
• 14.4K GSM circuit switched data
• SMA antenna connector and SIM socket
• Serial interface supports DTE speeds to 115.2K
• AT command compatible
• MNP2 V.42bis data compression
• Numerous LEDs provide operational status
• ME + SIM phone book management
• Fixed dialing number
• SIM Toolkit Class 2
• SIM, network and service provider locks
• Real time clock
• Alarm management
• UCS2 character set management
• Packet data up to 85K bps
• Embedded TCP/IP stack

# Safety

## General Safety

The modem is designed for and intended to be used in fixed and mobile applications. “Fixed” means that the device is physically secured at one location and is not able to be easily moved to another location. “Mobile” means that the device is designed to be used in other than fixed locations.

---

**Caution:** Maintain a separation distance of at least 20 cm (8 inches) is normally maintained between the transmitter’s antenna and the body of the user or nearby persons. The Modem is not designed for or intended to be used in portable applications within 20 cm. (8 inches) of the body of the user.

---

## RF Interference Issues

It is important to follow any special regulations regarding the use of radio equipment due in particular to the possibility of radio frequency, RF, interference. Please follow the safety advice given below carefully.

- Switch OFF your Wireless MultiModem when in an aircraft. The use of cellular telephones in an aircraft may endanger the operation of the aircraft, disrupt the cellular network and is illegal. Failure to observe this instruction may lead to suspension or denial of cellular telephone services to the offender, or legal action or both.
- Switch OFF your Wireless MultiModem when around gasoline or diesel-fuel pumps and before filling your vehicle with fuel.
- Switch OFF your Wireless MultiModem in hospitals and any other place where medical equipment may be in use.
- Respect restrictions on the use of radio equipment in fuel depots, chemical plants or where blasting operations are in progress.
- There may be a hazard associated with the operation of your Wireless MultiModem close to inadequately protected personal medical devices such as hearing aids and pacemakers. Consult the manufacturers of the medical device to determine if it is adequately protected.
- Operation of your Wireless MultiModem close to other electronic equipment may also cause interference if the equipment is inadequately protected. Observe any warning signs and manufacturers’ recommendations.

## Installation Instructions and Hazardous Locations Warnings

1. The modems are open devices intended for installation in an ultimate enclosure suitable for the intended application.
2. THIS EQUIPMENT IS SUITABLE FOR USE IN CLASS I, DIVISION 2, GROUPS A, B, C, AND D OR NON-HAZARDOUS LOCATIONS ONLY.
3. “WARNING – Explosion Hazard – Substitution of Components may Impair Suitability for Class I Division 2”.
4. “WARNING – Explosion Hazard – Do not Disconnect Equipment Unless Power has been switched off or the area is known to be Non-Hazardous”.
5. “WARNING – Explosion Hazard - Do not replace the Fuse Unless Power has been switched off or the area is known to be Non-Hazardous”.
6. “WARNING – Do not install or remove SIM card unless power has been switched off or the area is known to be Non-Hazardous”.

## Vehicle Safety

- Do not use your MultiModem while driving.
- Respect national regulations on the use of cellular telephones in vehicles. Road safety always comes first.
- If incorrectly installed in a vehicle, the operation of Wireless MultiModem telephone could interfere with the correct functioning of vehicle electronics. To avoid such problems, be sure that qualified personnel have performed the installation. Verification of the protection of vehicle electronics should be part of the installation.
- The use of an alert device to operate a vehicle’s lights or horn on public roads is not permitted.

## Maintenance of Your Modem

Your Wireless MultiModem is the product of advanced engineering, design, and craftsmanship and should be treated with care. The suggestions below will help you to enjoy this product for many years.

- Do not expose the Wireless MultiModem to any extreme environment where the temperature is above 50°C or humidity is above 90% noncondensing.
- Do not attempt to disassemble the Wireless MultiModem. There are no user serviceable parts inside.
- Do not expose the Wireless MultiModem to water, rain, or spilled beverages. It is not waterproof.
- Do not place the Wireless MultiModem alongside computer discs, credit or travel cards, or other magnetic media. The phone may affect the information contained on discs or cards.
- The use of accessories not authorized by Multi-Tech or not compliant with Multi-Tech's accessory specifications may invalidate the warranty of the Wireless MultiModem.
- In the unlikely event of a fault in the Wireless MultiModem, contact Multi-Tech Tech Support.

## Your Responsibility

This Wireless MultiModem is your responsibility. Please treat it with care respecting all local regulations. It is not a toy. Therefore, keep it in a safe place at all times and out of the reach of children.

Try to remember your Unlock and PIN codes. Become familiar with and use the security features to block unauthorized use and theft.

## Package Contents

Unbundled Package Modem with No Accessories	Bundled Package Modem with Accessories
1 modem 1 mounting bracket 1 fused DC power cable 1 Quick Start Guide 1 MultiModem CD  Note: You must supply bracket screws and an antenna.	1 modem 1 mounting bracket 1 antenna 1 serial cable 1 DC power supply/cable (varies) 4 rubber feet 1 Quick Start Guide 1 MultiModem CD  Note: You must supply bracket screws.

### **Note:**

Your wireless provider will supply the SIM card.

## General Specifications

General Specifications	
<b>Power Requirements</b>	5 V to 32VDC; 400mA Average @5V, 1A Peak @ 5V
<b>Mechanical Dimensions &amp; Weight</b>	4.3" L x 2.4" W x 0.94" H; 4.2 oz. (11 cm x 6.1 cm x 2.4 cm; 119 g)
<b>Connectors &amp; Fasteners</b>	<b>Antenna Connection type:</b> SMA jack <b>Serial Connector:</b> DE15 <b>Pins:</b> RS232 link, audio link, BOOT, RESET <b>Power Connector:</b> 2.5mm miniature power jack <b>SIM receptacle:</b> standard 3V
<b>Operating Temperatures</b>	-30° to +70°C
<b>Storage Temperatures</b>	-40° to +85°C
<b>Humidity</b>	Relative humidity 20% to 90% noncondensing
<b>Certifications</b>	CE Mark, R&TTE EMC: FCC Part 2, 15, 22, 24, EN 55022 & EN 55024 Safety: cUL, UL 60950, EN 60950 Network: PTCRB

## Functions – GSM/GPRS Modes

Mode	Description
<b>Standard</b>	Quad Band 850/900/1800/1900 MHz
<b>Interface</b>	Serial interface RS-232. V.24/V.28 Autobauding function.
<b>SMS</b>	Mobile Originated (MO) and Mobile Terminated (MT) SMS Mode Text & PDU point to point. Cell broadcast in accordance with GSM 07.05.
<b>Data</b>	Data circuit asynchronous, transparent, non-transparent up to 14,400 bits
<b>GPRS</b>	Class 10. Coding schemes: CS1 to CS4.

## Electrical Specifications

Electrical Characteristics	
<b>Switching on/off</b>	The device is permanently powered (when connected to the power supply).
<b>Voltage Range</b>	Voltage range : 5 to 32V DC GND : 0V
<b>Over voltage and under voltage</b>	Correct operation of the Wireless MultiModem in communication mode is not guaranteed if input voltage falls below 5V.

Input/output electrical characteristics for external connections								
Parameters	GSM/GPRS 850/900			GSM/GPRS 1800/1900			Unit	
	Typ.	Typ.	Typ.	Typ.	Typ.	Typ.		
<b>Input Supply Voltage</b>	5	13.2	32	5	13.2	32	V	
<b>Input peak supply current in comm. mode at P<sub>max</sub></b>	1	.4	.2	1	.4	.2	A	
<b>Input average supply current in comm. mode at P<sub>max</sub></b>	360	150	75	300	125	70	mA	
<b>Input average supply current in idle mode</b>	30	10	10	30	10	10	mA	

## RF Specifications

	GSM 850	EGSM 900	GSM 1800	GSM 1900
Frequency RX	869 to 894 MHz	925 to 960 MHz	1805 to 1800 MHz	1930 to 1990 MHz
Frequency TX	824 to 849 MHz	880 to 915 MHz	1710 to 1785 MHz	1850 to 1910 MHz
RF Power Stand	2W at 12.5% duty cycle	2W at 12.5% duty cycle	1W at 12.5% duty cycle	1W at 12.5% duty cycle

## Antenna Specifications

### GSM/EGSM Antenna Requirements/Specifications

Frequency Range:	824 – 960 MHz / 1710 – 1990 MHz
Impedance:	50 Ohms
VSWR:	<2.0:1
Typical Radiated Gain:	3 dBi on azimuth plane
Radiation:	Omni
Polarization:	Vertical
Wave:	Half Wave Dipole

### Antennas Available from Multi-Tech Systems, Inc.

Description	Part Number
Hinged Right Angle 900/1800 MHz Cellular Modem Antenna	ANF1-1HRA
Hinged Right Angle 800/1900 MHz Cellular Modem Antenna	ANF21HRA
Hinged Right Angle 850/900/1800/1900 MHz Cellular Modem Antenna	ANQB-1HRA

### PTCRB Requirements Note

There cannot be any alteration to the authorized antenna system. The antenna system must be the same type with similar in-band and out-of-ban radiation patterns and maintain the same specifications.

### FCC Requirements Note

The antenna gain, including cable loss, must not exceed 3.0 dBi at 1900 MHz / 1.6 dBi at 850 MHz for mobile operating configurations and 7.0 dBi at 1900 MHz / 2.3 dBi at 850 MHz for fixed mounted operations, as defined in 2.1091 and 1.1307 of the rules for satisfying RF exposure compliance.

## Interfaces

The Wireless MultiModem has several interfaces:

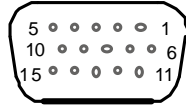
- LED function indicating operating status
- External antenna (via SMA connector)
- Serial and control link (via 15 pins SUB D)
- Power supply (via 2.5mm miniature power jack)
- SIM card holder

### LEDs

LED Indicators	
TD	<b>Transmit Data.</b> Lit when modem is transmitting data.
RD	<b>Receive Data.</b> Lit when modem is receiving data.
CD	<b>Carrier Detect.</b> Lit when data connection has been established.
LS	<b>Line Status.</b> <b>Continuous “on” state</b> indicates that the wireless modem is not registered on the network. <b>Flashing state</b> indicates registration on network. <b>Off state.</b> Modem is off (not ready) or in download mode.
TR	<b>Terminal Ready.</b> Commonly called “Data Terminal Ready.” This is a readiness signal from the PC.
PWR	<b>Power.</b> Indicates presence of DC power when lit.



## RS232 15-Pin Connector Pinout



	PIN	EIA	CCIT	Designation
RS-232	1	DCD	109	Data Carrier Direct
	6	RX	104	Receive Data (out)
	2	TX	103	Transmit Data
	8	DTR	108.2	Data Terminal Ready
	9	GND		Signal Ground
	7	DSR	107	Data Set Ready
	12	RTS	105	Request to Send
	11	CTS	106	Clear to Send
	13	RI	125	Ring Indicator
Audio	4	MICROPHONE (+)		
	5	MICROPHONE (-)		
	10	SPEAKER (+)		
	15	SPEAKER (-)		
Boot	3	BOOT		For factory use only.
Reset	14	RESET		To reset, connect to GND momentarily (typical: 2mSec). Open for normal operation.

## AT Command Information

AT commands for the GPRS wireless modem are published in a separate Reference Guide included on the MultiModem CD and posted on the Multi-Tech web site.

IP commands for GPRS modems are also published in a separate Reference Guide included on the MultiModem CD and posted on the Multi-Tech web site.

# Chapter 2 – Activation and Installation

## Activate Your Wireless Account

### Activate Your Wireless Account

Please see the wireless account Activation Notices located on the MultiModem CD. Choose the one for your wireless network provider and follow the directions to activate your account.

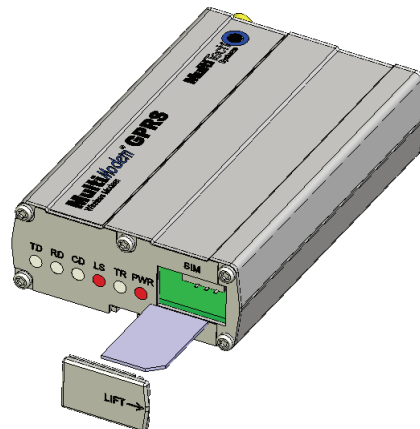
### Phone Numbers for the Wireless Modem

Every wireless modem will have its own unique phone number. The phone number may simply be given to you by your wireless service provider or it may be on the SIM card or both. Wireless provider implementations may vary.

## Insert the SIM Card into the Holder

The wireless MultiModem requires the power supply connection to begin operation. It also requires a SIM card (Subscriber Identity Module) to operate on a GSM network. To install the modem, do the following:

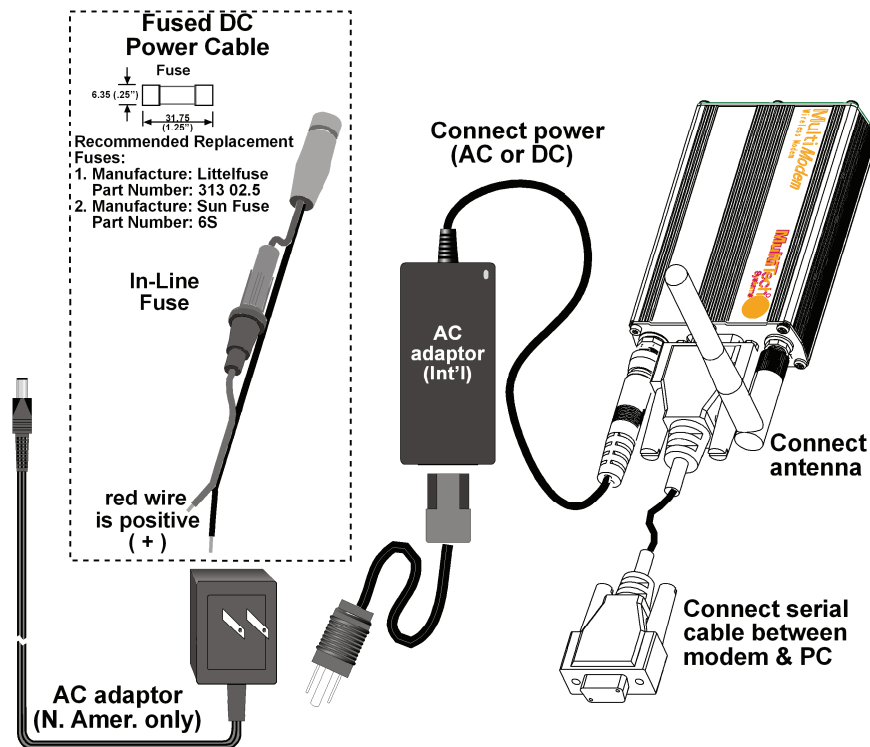
1. Using your fingernail or a small wedging tool (e.g., a small screwdriver), pry off the SIM cover.



2. Insert the SIM card into the holder.
3. Verify that the SIM card fits into the holder properly and then replace the cover.

## Hook up the Antenna, Serial Cable, and Power

1. Connect a suitable antenna to the SMA connector (see antenna specifications on page 9).
2. Connect both sides of the serial and control cable (15-pin Sub D connector on the modem side).
3. Plug the power supply cable into the modem.



### For Two-Piece Transformer Power Supply (International).

- Connect the AC cord receptacle into the transformer block.
- Connect the AC cord plug into the mains power outlet.

### For One-Piece Transformer Power Supply (North America).

- Connect between the MultiModem power receptacle and the mains power outlet.

### For Optional Direct DC Power

- Connect the fused DC power cable into the DC power connector on the modem.
- Then attach the two wires at the other end of the fused cable to a DC fuse/terminal block on a vehicle in which you are mounting the MultiModem.
- Connect red wire to the "+" (positive) and black wire to the "-" (negative). Be sure the GND connection is correct.

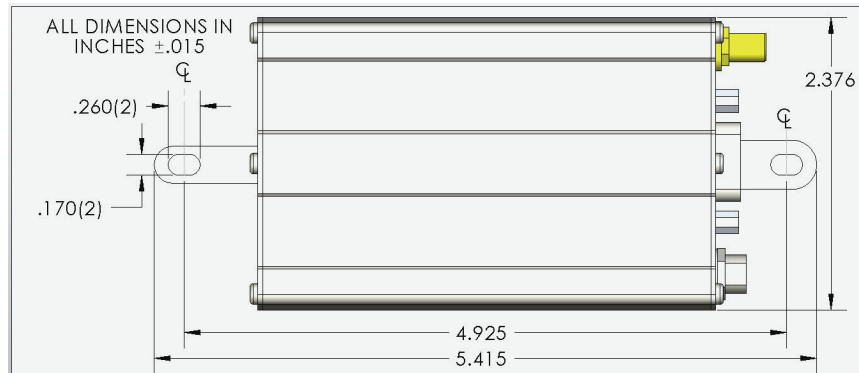
**Warning:** Over-voltage protection is provided on the device. To ensure complete protection, you may want to add additional filtering to the DC input.

**Note:** For automotive application: according to the type of application, you can use permanent "+" or key-switched "+". Connect the power supply to its source (for example, in a mobile situation, to the vehicle's DC fuse/terminal block).

## Optional – Attach the Modem to a Flat Surface

To mount the Wireless MultiModem, do the following:

1. Obtain mounting screws (two are needed) that are appropriate for the surface on which you will mount the modem. For example, one might use two 6-32 self-tapping screws 5/8" in length to mount the unit in a truck to the wall of the cab behind the passenger's seat.
2. Typically, the unit is mounted against a flat surface into which holes can be drilled. The mounting holes (center-to-center) must be separated by 125mm or 4 -15/16 inches.  
Drill the mounting holes at the desired mounting location.



3. Slide the mounting bridles into the corresponding slots on the backside of the modem chassis.
4. Attach the modem with two screws to the mounting surface at the desired location on the equipment.

# Install the Modem Driver

## Introduction

**Compatibility:** The wireless modem is compatible with Windows Vista, XP, 2003, 2000, and Linux.

**Windows:** Windows operating systems require a modem driver to be installed in your computer's program directory. The Windows driver is located on your MultiModem product CD. Refer to the example below for installing the Windows driver onto your PC.

**Linux:** Linux does not require a driver for serial modems.

## Requirements

- One MTCBA-G modem
- A RS-232 cable to connect the modem to the PC
- The MultiModem CD that was shipped with the Multi-Tech modem
- A PC running Windows

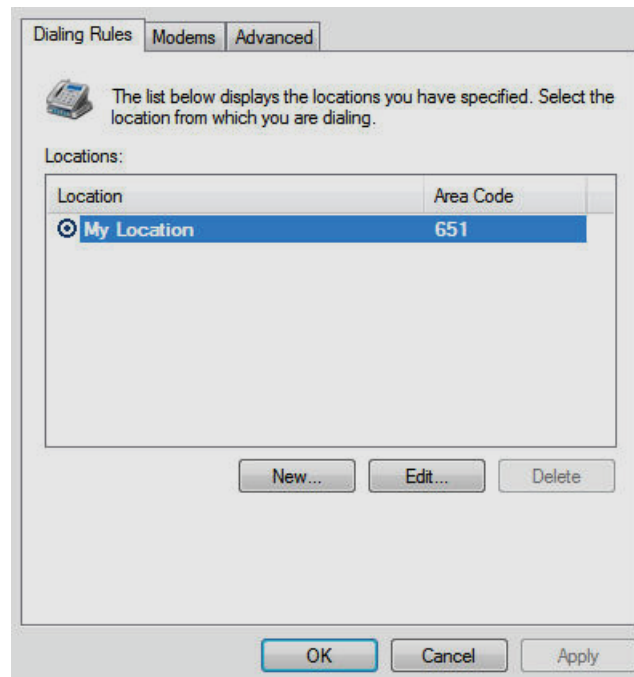
**Note:** This installation procedure is only used as a basic guide to help you install the Multi-Tech Wireless modem driver. You may see differences in your setup based upon your version of Windows and your Windows settings.

## Installing the MultiModem Driver onto a PC Running Windows Vista/XP/2003

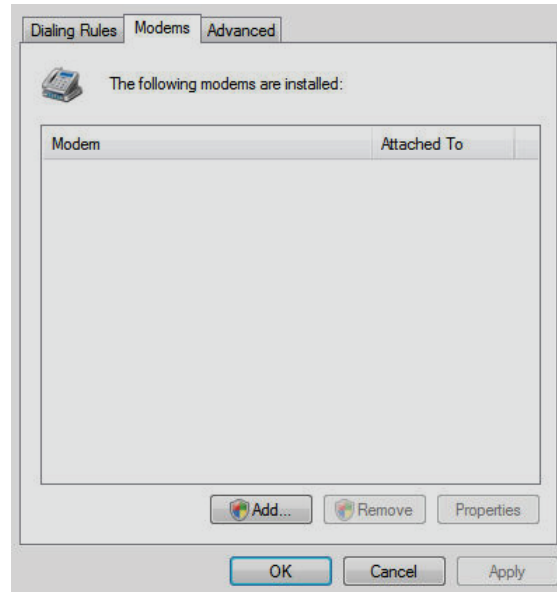
This installation assumes a Windows Vista, XP or 2003 operating system. XP and 2003 are identical in the methods they use for installing modem drivers.

To load the MultiModem wireless modem's driver on your PC, select the Control Panel's *Phone and Modem Options* option. During this installation, you will be required to browse the MultiModem CD to load the modem's INF file. This file is located at the root directory on the MultiModem CD.

1. Go to **Start**, and then click on **Control Panel**.
2. In the Control Panel, double-click on **Phone and Modem Options**.

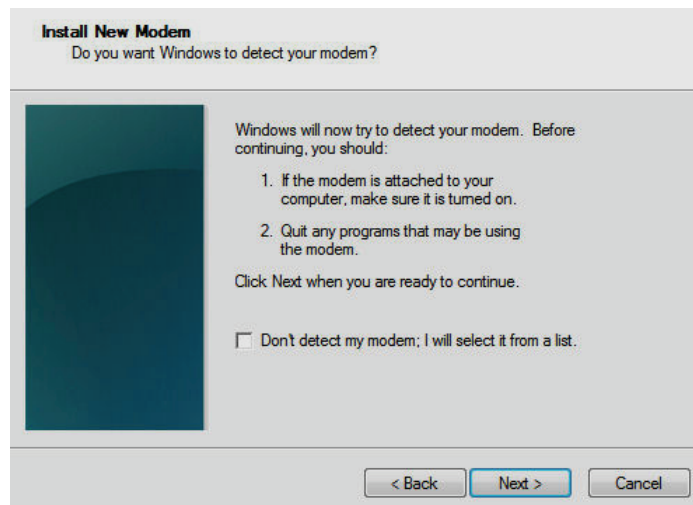


3. When the *Phone and Modem Options* screen appears, click on the tab labeled **Modems**.



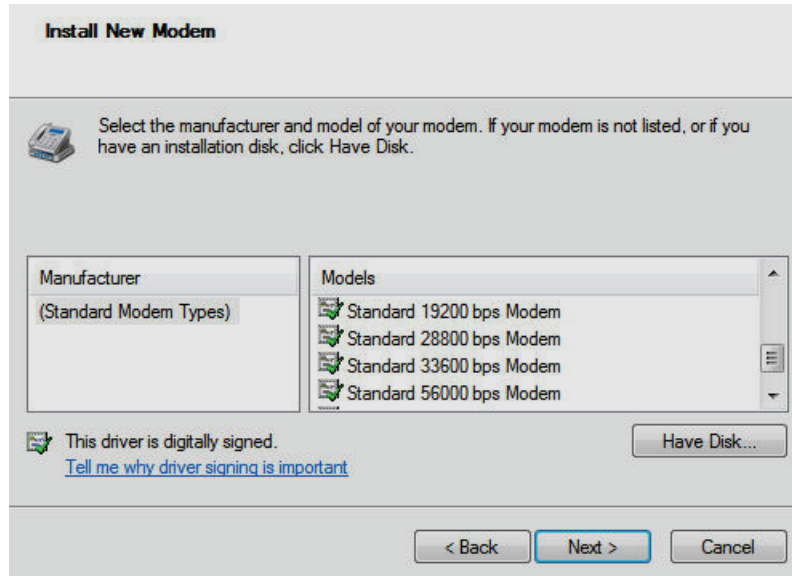
Click on **Add** to add a new modem.

4. On the *Install New Modem* screen.



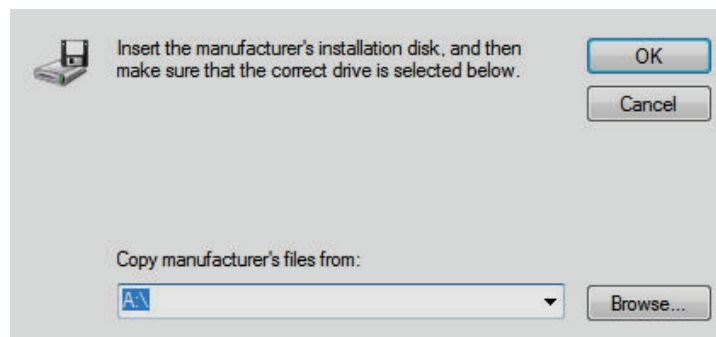
Click **Don't detect my modem, I will select it from a list**. Then click **Next >**.

- On the next screen

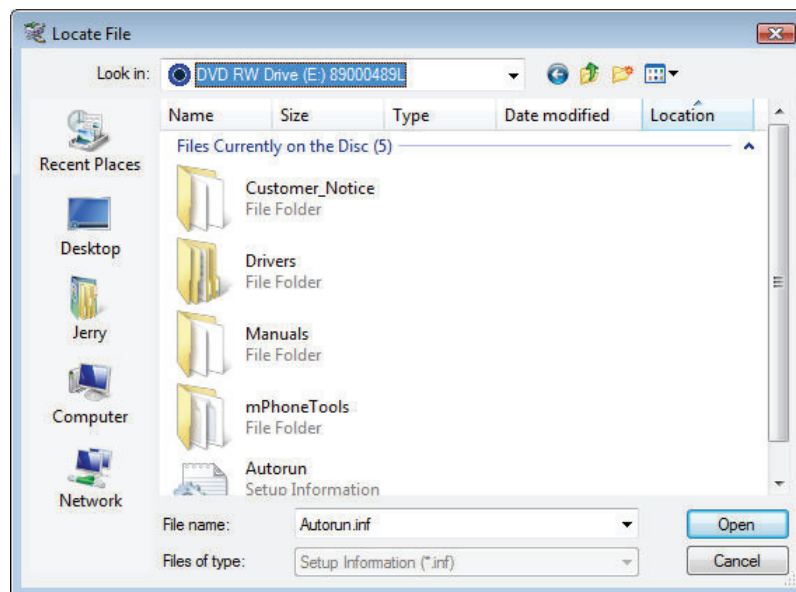


Click the **Have Disk** button to browse for the driver file on the MultiModem CD.

- Make sure that the MultiModem CD is inserted into your CD-ROM,

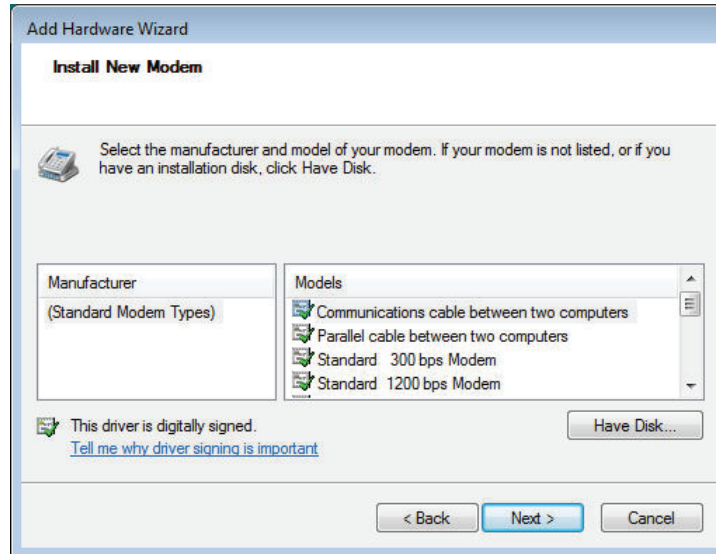


- Browse to your MultiModem CD



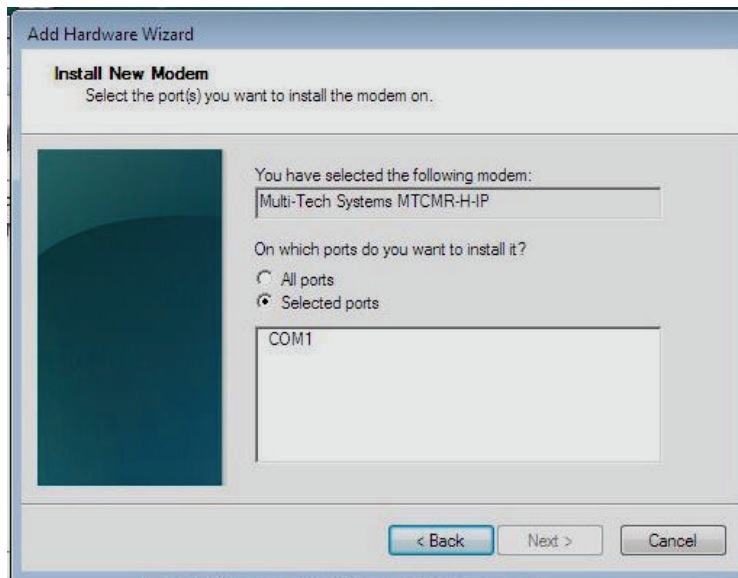
Select Drivers/Windows Drivers/Vista 32 or 64 or XP 32 or 64 depending on your Windows operating system and then select MTSWireless file.

8. On this next screen, scroll down the list of modems and select the model that is applicable to your modem.



Once you have selected your model, click on **Next>**.

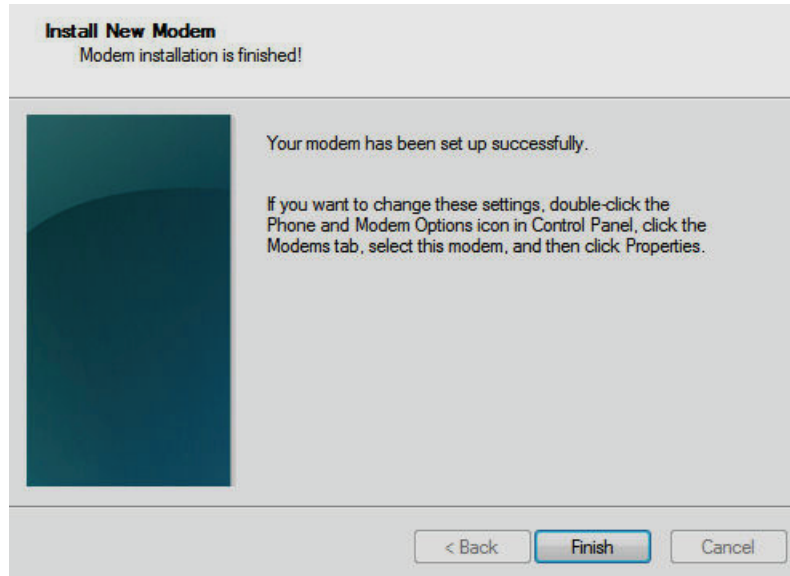
9. You will now have to choose which com port the MultiModem is connected to.



If you know exactly which port your modem is on, click on that port; other wise, choose COM1 (most common). Click **Next >**.



10. To finish the install, click on **Finish**.



You have now successfully installed the MultiModem driver to your PC.

### ***Verifying That Your Modem Has Been Installed Successfully***

1. After you have successfully installed the Multi-Tech modem driver as stated above, you should be brought back to the *Phone and Modems Options* screen. Make sure that the modem is now listed under the columns **Modem** and **Attached To** (the correct com port).
2. Highlight the modem and then click **Properties**.
3. A **Properties** screen will open for the Multi-Tech modem. Click on the tab labeled **Diagnostics**.
4. In the middle of the screen, click on the **Query Modem** button. Windows will now try to query the Multi-Tech modem. If this process passes, the second box on this screen will show the columns **Command** and **Response**.  
**Note:** To make sure that the modem is correctly being queried, look at the LED lights of the modem after you click on *Query Modem*. The TR light should come on and the TD and RD lights should flicker.
5. If this process passes, then the modem should be properly installed and ready for use. Click **OK** to close the modem *Properties* window. Then click on **OK** to close the *Phone and Modem Options* window.

# Chapter 3 – Using Your Wireless Modem

## Phone Numbers for the Wireless Modem

- Every wireless modem will have its own unique phone number.
- The phone number may simply be given to you by your wireless service provider or it may be on the SIM card or both. Wireless provider implementations may vary.

## Examples of Useful AT Commands

### A Note About HyperTerminal

In order to verify signal strength and roaming status, you must use a terminal application such as HyperTerminal. To open this program in Windows XP or Windows 2003, go to **Start > All Programs > Accessories > Communications > HyperTerminal**. Other Windows operating systems have similar paths to HyperTerminal. See your system's online Help if you cannot find it.

### A Note About AT Commands

AT commands can be used to operate, configure, and query your modem. A reference guide to the GPRS commands is included on the MultiModem CD and on the Multi-Tech Web site.

The following two commands let you query signal strength and roaming status.

## Verifying Signal Strength

Using **HyperTerminal**, type **AT+CSQ**

The modem responds with the received signal strength (rssi).

The modem responds with the received signal strength (rssi) and the channel bit error rate (ber).

RSSI ranges from 0 to 31.

Signal Strength Verification – RSSI	
21 – 31	Exceptional
11 - 20	Average
0 - 10	Weak or Insufficient
99	No signal

BER ranges from 0 to 7 (Seven is the highest error rate).

## Checking Network Registration and Roaming Status

In this procedure, you will verify that the Wireless MultiModem has been registered on the wireless network.

Using **HyperTerminal**, type **AT+CREG?**

The modem will respond in one of the following ways:

Network Registration Verification	
Value	Network Registration Status
0,0	The modem is not registered on any network
0,1	The modem is registered on the home network
0,5	The modem is registered on a network and it is roaming

**Note:** If the modem indicates that it is not registered, verify the signal strength to determine if the problem is the strength of the received signal.

## Checking the Modem's Identity

Use the **ATI** command (Note: This command is illustrated using the capital letter i after **AT**)

- Type **ATI0** (Note: The command ends in a zero)  
The manufacturing data displays. For example: Wavecom Modem Multiband G850 1900
- Type **ATI3**  
The software version displays. For example: 651\_09gg...
- Type **ATI6**  
Displays modem data features. For example: data rates, data modes, fax classes.

## Establishing a Voice Call

- **Enter PIN Code (if required by your wireless provider)**

Type **AT+CPIN=1234**

Responses: OK (PIN Code accepted)  
 +CME ERROR : 16 (Incorrect PIN Code)  
 +CME ERROR : 3 (PIN already entered [with +CMEE : 1 mode])

- **Initiate a voice call**

Type **ATD1234;** (Note: Don't forget the semicolon ";" at the end. This stands for *voice* calls)

Responses: OK (Communication established)  
 CME ERROR : 11 (PIN Code not entered [with +CMEE : 1 mode])  
 CME ERROR : 3 (Operation not allowed)

- **Initiate an emergency call**

Type **ATD112;** (Note: Don't forget the semicolon ";" at the end. This stands for *voice* calls)

Responses: OK

- **Hang up**

Type **ATH**

Responses: OK

## Establishing a Circuit-Switched Data (CSD) Connection

A Circuit-Switched Data Connection makes the wireless modem work similar to a regular analog modem. You must have CSD service in order to make a CSD call.

**Note:** Your wireless service provider charges airtime usage for these connections.

**Establish a Connection:** Using HyperTerminal or a terminal application, you can establish a CSD connection by entering the following command: **ATD<phone number>**

**Notes:**

- The phone number you are calling is entered between the displayed brackets. Do not type additional brackets. For example, type only **ATD 8585551212. 8285551212** is typed between the brackets.
- This command tells the modem to inform the wireless network that you are initiating a CSD modem call. If you are dialing to another modem, the remote modem should answer and a connection between the two modems will be established. If you include a semi-colon (;) at the end of the dialing string, the modem will instead initiate a Voice call to the phone number dialed.

**Disconnect:**

Type: **+++**

Wait about two seconds to see an OK response.

Then type: **ATH**

**Note:** **+++** is the escape sequence and **ATH** is the Hang-up command.

## Answering a Circuit-Switched Data (CSD) Connection

A Circuit-Switched Data Connection makes the wireless modem work similar to a regular analog modem. You must have CSD service in order to answer a CSD call.

There are three phone numbers for GSM: the voice number, the data number, and the fax number. All are provided by the carrier. To answer a call:

**Establish A Connection:** Call into the modem by dialing the data number provided by your carrier.

**Answer a Call:**

When you see the RING responses on the terminal screen, enter **ATA <cr>** to answer the call.

**Set Auto-Answer:**

Enter **ATS0=x**

This sets the modem to auto-answer. The call will be answered after the number of rings entered. **x** stand for the number rings.

Then call into the number provided to you by the carrier.

**Disconnect:**

Type: **+++**

Wait about one second to see an OK response.

Then type: **ATH**

## Using Short Message Services (SMS)

### Send a Short Message to a Specified Number.

Type **AT+CMGS="8585551212" <press Enter>**  
 Then type your message: **Please call me soon. <press ctrl Z>**  
 The modem may respond with **+CMGS:<mr> OK**

### Write a Message to Memory.

You can store a message to send it at a later date.  
 Type **AT+CMGW="8585551212" <press Enter>**  
 Type the message. **<press ctrl Z>**  
 The modem may respond with **+CMGW: 4 OK** (The message is stored in the index as message 4.)

### Send a Message from Storage.

Type **AT+CMSS=*x*,"8585551212" <press Enter>**  
 The modem may respond with **+CMSS: 1 OK** (The transmission is successful. One SMS message is sent.)

**Note:** The *x* represents an index location.

### View a List of Stored Messages.

Type **AT+CMGL=*x* <press Enter>**  
 For *x*, substitute one of the following:

"**REC UNREAD**" Shows received unread messages.  
 "**REC READ**" Shows received read messages.  
 "**STO UNSENT**" Shows stored unsent messages.  
 "**STO SENT**" Shows stored sent messages.  
 "**ALL**" Shows messages.

The modem will respond **AT+CMGL: 1,"REC UNREAD","8585551212",1...**  
 The modem will continue until all UNREAD messages, numbers, and index number are listed.

### Read a Stored Message.

Type **AT+CMGR=*x* <press Enter>**  
 The modem may respond with **+CMGR: "REC READ", "8585551212", .....**

**Note:** The *x* represents an index location.

### Delete a Stored Message.

Type **AT+CMGD=*x,n* <press Enter>**

If you want to delete one message at a time, do not enter a value for *n*.

For *n*, substitute one of the following:

- 0** Delete message at location <include the index number>
- 1** Delete all READ messages.
- 2** Delete all READ and SENT messages.
- 3** Delete all READ, SENT, and UNSENT messages.
- 4** Delete ALL messages.

The modem will respond **OK**.

**Note:** The *x* represents an index location. The *n* stands for the type of messages to delete.

## SMS Examples

### Send Example

Send an SMS message to another SMS compatible device

```

at+cmgf=1 (set to text mode)
OK
at+cpms="SM","SM" (set memory storage when writing and sending SMS messages)
+CPMS: 0,50,0,50

OK

at+cmgs="7632273726" (send message to the number specified in quotes)
> TEST message ONE. ( Type message after the > symbol and hit <CTRL + Z> to send the message)
+CMGS: 52

OK

```

### Receive Examples

**Receive Example 1: Receive SMS messages in text mode by saving to SIM memory – Notification via +CMTI unsolicited response code:**

```

at+cmgf=1 (set to text mode)
OK
at+csms=0 (set to Phase 1)
+CSMS: 1,1,1

OK
at+cnmi=2,1,0,0,0 (set to display +CMTI indication when SMS is received)
OK
at+cpms="SM","SM" (set the read and write storage of SMS to SIM)
+CPMS: 0,50,0,50

OK

+CMTI: "SM",1 (indication that message was received and stored to SIM location 1)
at+cmgr=1 (read message stored in location 1)
+CMGR: "REC UNREAD","+17632273726",,"06/03/17,13:55:22+00"
TEST1

OK
at+cmgd=1 (delete message that is stored in location 1)
OK

```

**Receive Example 2: Receive SMS message in text mode by directly routing the received message to the TE through the serial port using Phase 2:**

```

at+cmgf=1 (set to text mode)
OK
at+csms=0 (set to Phase 2)
+CSMS: 1,1,1

OK
at+cnmi=2,2,0,0,0 (set to receive SMS and route directly to TE)
OK

+CMT: "+17632273726",,"06/03/17,13:59:18+00" (message received and directly routed to TE)
TEST2

```

**Receive Example 3: Receive SMS message in text mode by directly routing the received message to the TE through the serial port using Phase 2+:**

**at+cmgf=1** (set to text mode)

OK

**at+csms=1** (set to Phase 2+)

+CSMS: 1,1,1

OK

**at+cnmi=2,2,0,0,0** (set to receive SMS and route directly to TE)

OK

+CMT: "+17632273726",,"06/03/17,14:01:17+00" (message received and directly routed to TE)

TEST3

**at+cnma** (acknowledge that message has been received)

OK

## Internet Access

Internet access can be setup in Windows Dial-Up Networking (DUN) of the computer that the wireless modem is serving. Setup procedures will vary according to the type of wireless service provider used. To access *Dial-Up Networking* on your PC, go to **Start > Settings > Network Connections**.

- For GSM-without-GPRS, a circuit-switched data connection is used. The user can set up DUN to make a conventional V.32 modem connection to any terminating modem at the other end. The phone number specified in DUN can be one supplied by the wireless service provider or another phone number related to a different dialup modem service (e.g., a dialup modem service phone number from any commercial or private dialup network).
- For GSM-with-GPRS, a single DUN number is generally used by all of a wireless provider's subscribers throughout its area of coverage; regional, nationwide, continental, etc. Rather than being a literal phone directory number, as in conventional DUN, this is a code that gives the modem Internet access.

## Connecting to the GPRS Network for Internet Access

After you have inserted the SIM card and the modem is ready for use, you can establish an Internet connection through a Windows dial-up session.

Note that your wireless provider will charge you for data usage.

### Requirements

- One Multi-Tech wireless GPRS modem
- The GPRS modem should have an active SIM card and must have GPRS services
- The modem must be getting a proper signal and be showing a network registration through the wireless provider's network
- A PC running Windows XP or 2003 with the Multi-Tech drivers installed for your particular model

The following instructions are for Windows XP SP2 and Windows 2003. Every PC may have slight differences which may cause the instructions to be different. Use these instructions as a guide to help you understand what is required to set up an Internet connection through your wireless service provider for all operating systems.

**Note:** Cellular providers provide Internet services as part of your service plan. Multi-Tech recommends that if you plan on using large amounts of data, to sign up for an unlimited data service plan with your provider. Multi-Tech Systems, Inc. will not be responsible for any charges on your cellular bill. If you have any questions about billing, service plans, service charges, etc., please contact your provider for more information.

### Set the Access Point Name (APN) into the Modem's Properties on Your PC

In order for your GPRS wireless modem to connect to your provider's network, you must tell the modem the Access Point Name (APN) to which it will connect. The APN is a server name that your account is setup on with your provider. Your APN will be given to you by your provider. Here are some well-known APNs:

- AT&T: PROXY, or INTERNET, or PUBLIC
- T-Mobile: INTERNET2.VOICESTREAM.COM, or INTERNET3.VOICESTREAM.COM, or WAP.VOICESTREAM.COM
- Rogers AT&T of Canada: INTERNET.COM

### Steps for Setting the APN

1. Start by clicking on **Start** and then clicking on **Control Panel**.
2. In the Control Panel, double-click on **Phone and Modem Options**.
3. The *Phone and Modem Options* window appears. Click on the tab labeled **Modems**. Highlight the Multi-Tech wireless modem listed in the table and then click on **Properties**.
4. A *Properties* window for your modem will display. Click on the **Advanced** tab and you should see an *Extra Settings* box. In the **Extra initialization commands** text box, type:

**AT+CGDCONT=1,"IP", "<APN>"**

For <APN>, type in the correct APN for your account. For example:

**AT+CGDCONT=1,"IP", "ISP.AT&T"**

Click **OK** to close the modem *Properties* window. Then click **OK** to close the *Phone and Modem Options* window.

### Create Your Dial-Up Connection in Windows XP/2003

1. Click on **Start** and then click on **Control Panel**.
2. In the *Control Panel*, double-click on **Network Connections**.
3. On the *Network Connections* screen on the left-hand side under **Network Tasks**, click on **Create a new connection**.
4. The *New Connection Wizard* should appear. It will walk you through setting up your Internet connection. Click on **Next >** to begin.
5. On the *Network Connection Type* screen, select **Connect to the Internet**, and then click **Next >**.
6. On the *Getting Ready* screen, select **Set up my connection manually**, and then click **Next >**.
7. On the *Internet Connection* screen, select **Connect using a dial-up modem**, and then click **Next >**.  
**Note:** After clicking on Next, you may or may not be asked to select which modem to use. If you have more than one modem installed in your PC, you will be required to select the proper modem to use. If asked, please select the Multi-Tech wireless modem that has been installed.
8. On the *Connection Name* screen in the **ISP Name** box, type in a name for your new connection. You can give it any name that you would like. After you have typed in a name, click **Next >**.
9. On the *Phone Number to Dial* screen, type in the number that specifies to the modem to connect to your provider's Internet service.  
 For GPRS modems, type in the number **\*99\*\*\*1#**.  
 Then click **Next >**.
10. On the *Connection Availability* screen, specify if this connection is for anyone's use or for your use only by checking the appropriate button. Choose your preference, and then click **Next>**.
11. On the *Internet Account Information* screen, type the user name and the password for your account. In many cases, a user name and a password are not required, but some wireless providers require it. Check with your provider to see if they are needed.  
 Check the following two options if you would like them activated:  
 Check the box if you want this account name and password to be used by everyone.  
 Check the box if you want this as your default Internet connection. Then click **Next >**.
12. On the *Completing the New Connection Wizard* screen, your last task is to place a check in the box if you would like to add a shortcut to your desktop. Then click **Finish**.
13. A *Connection* screen displays on your desktop. Click the **Properties** button on the bottom of this screen.
14. The *Properties* window will open for you to make your connection. **Important:** Make sure that *Use dialing rules* is not selected, and then click **OK**.
15. Once back at your *Connection* screen, click the **Dial** button at the bottom of the screen to start the connection.
16. The connection will now tell the modem to connect to your provider's Internet service. Once connected, you should see the connection status icon in your system tray at the bottom right-hand corner of your screen.  
 You should now be able to open Internet Explorer or any other browser of your preference to surf the Internet.

### Disconnecting the Connection:

1. To disconnect the connection, right click on the connection icon in your system tray at the bottom right-hand corner of your screen.
2. Scroll up and click on **Disconnect**.  
 You should now be disconnected from the Internet.



# Chapter 4 – Troubleshooting and Frequently Asked Questions

## Troubleshooting Examples

Before calling the Multi-Tech Technical Support, check to the following connections:

- The right antenna is connected to the modem
- The serial cable connection is correct
- The power is connected correctly and the power lights on the modem are on
- Verify your signal strength
- Verify your network registration
- Use the following situation examples to troubleshoot the modem not answering and the modem returning a *No Carrier* message.

### Situation A: The modem does not answer

If the Wireless MultiModem does not answer through the serial link upon an attempted transmission of data or voice signals, see the table below for possible causes and solutions.

Solutions for 'no connection through serial link' situation		
If the modem returns ...	Then ask ...	Action
(nothing)	Is the communication program properly configured?	In communications program, verify that modem parameters have been set to the values shown here: Data bits = 8 Parity = none Stop Bits = 1 Baud = 115200 bps
	Is another program interfering with the communication program?	Close any such application program.
	Is the modem set to autoanswer?	Type <b>ATS0=1</b> (to set to auto answer on the first ring) Type <b>ATA</b> (to set to manual answer)
	Is the communication program receiving RING responses?	Type <b>ATS0=1</b> (to set to auto answer on the first ring) Type <b>ATA</b> (to set to manual answer)

### Situation B: The modem always returns «No carrier» when trying to originate a call

Solutions for "no carrier" message		
If the modem returns ...	Then ask ...	Action
no carrier (esp. for data communication)	Is the selected bearer type supported by the called party?	Type AT+CEER to view the extended error code (see "Error Results Codes" in the AT Command guide). Be sure that the selected bearer type is supported by the called party.
	Is the selected bearer type supported by the network?	Be sure that the selected bearer type is supported by the network. If no success, try bearer selection type: AT+CBST=0,0,3 Be sure SIM card is available for data/fax calls.
no carrier (esp. for voice communication)		Be sure that the semicolon character (";") is typed immediately after the phone number in the AT command; e.g., ATD#####;

# Frequently Asked Questions

## Which providers can I use?

- Two major providers are T-Mobile and AT&T.

## Does this modem support High-Speed Circuit-Switched Data (HSCSD)?

- No, our GSM/GPRS modems do not support HSCSD.

## The modem is answering, but seems to not be doing anything?

- The modem is answering in voice mode.
- If you are trying to make a data call, make sure the account has CSD service. You will also need the data number (separate number from the main phone number that is provided by the provider).

## I am trying to make a data connection by dialing from my wireless modem to an analog modem. Why does the analog modem answer and send tones, but never connect?

- To make a data call you must use the ATD<number> command.
- Make sure the account has CSD service.

## How do I get the voice portion to work so I can talk to others using the wireless modem?

- You will need a cable that has the speaker pins connected to a speaker and microphone.
- We have a “Y” cable that splits out to a RJ9 connector that can be used to plug into the receiver of a handset.
- ‘ATD<number>;’ will originate a voice call.

## How do I make an Internet connection to my dial-up ISP?

- Make sure you have CSD service.
- Create a dial-up connection to the ISP’s access number, then use your account username and password and choose the wireless modem as the device.

## How does faxing work?

- GPRS modems support Class 1 and Class 2 Group 3 faxing.
- You will need fax services setup on your account. You should receive a separate phone number for fax just like voice and data, and you must call the fax number for the modem to receive a fax.
- You will also need fax software (we do not have working software). WinFax Version 10 has been tested with success.

## I can’t make outgoing calls. I just receive a NO CARRIER response.

- Make sure the antenna is connected and SIM is inserted correctly.
- Check signal and registration: ‘AT+CSQ’ (10-31 is good), ‘AT+CREG?’ (0,1 is registered & 0,5 is roaming).
- Check NO CARRIER reason with ‘AT+CEER’. Look up error code in Reference Guide.

## The modem will not answer.

- To have modem autoanswer, set modem with ‘ATS0=1’ and ‘AT&W’ to store the setting.
- Send ‘ATA’ to the modem once the RING is indicated on the terminal screen.
- You may need to set modem to ignore DTR, ‘AT&D0’, if you aren’t providing DTR.

## I am trying to make a GPRS connection using a Windows dial-up session. It connects and then immediately disconnects.

- Make sure the APN is configured in the modem correctly (The APN is provided by the provider).
- Check the APN with ‘AT+CGDCONT?’ To make sure it is correct.
- If no APN is inserted, then insert the correct APN using the command ‘AT+CGDCONT=1,“IP”,“<APN>” with HyperTerminal or add it into the “Extra Initialization Commands:” in the modem’s properties.
- Make sure the APN is correct for your account.

## When I try to establish a GPRS connection using Windows dial-up I get an error: “Hardware Failure”.

- Check the modem to make sure it is installed and can be queried in the modem’s properties.
- Make sure the com port is not being held by another application. Look for the TR light indication. If it is on, most likely another application is holding onto the port.
- Make sure the dial-up connections maximum speed matches the modem’s properties maximum port speed.
- Try rebooting the PC.

## What is the maximum amount of characters I can use to send an SMS message?

- Supports up to 160 characters maximum.
- In PDU mode using 7-bit, the modem still supports 160 characters, but in 8-bit the modem will support only 70 characters.

**After changing the +CNMI, +CSCA, or +CSMP command values, the modem doesn't store them.**

- When changing these command values, you must use the +CSAS command to store the changes.

**How do I send an SMS message to an email account?**

- When sending an SMS message to an email account, you must use a designated routing number that will tell the SMS server to route your message to an email account. Here are the numbers that we are aware of at this time:

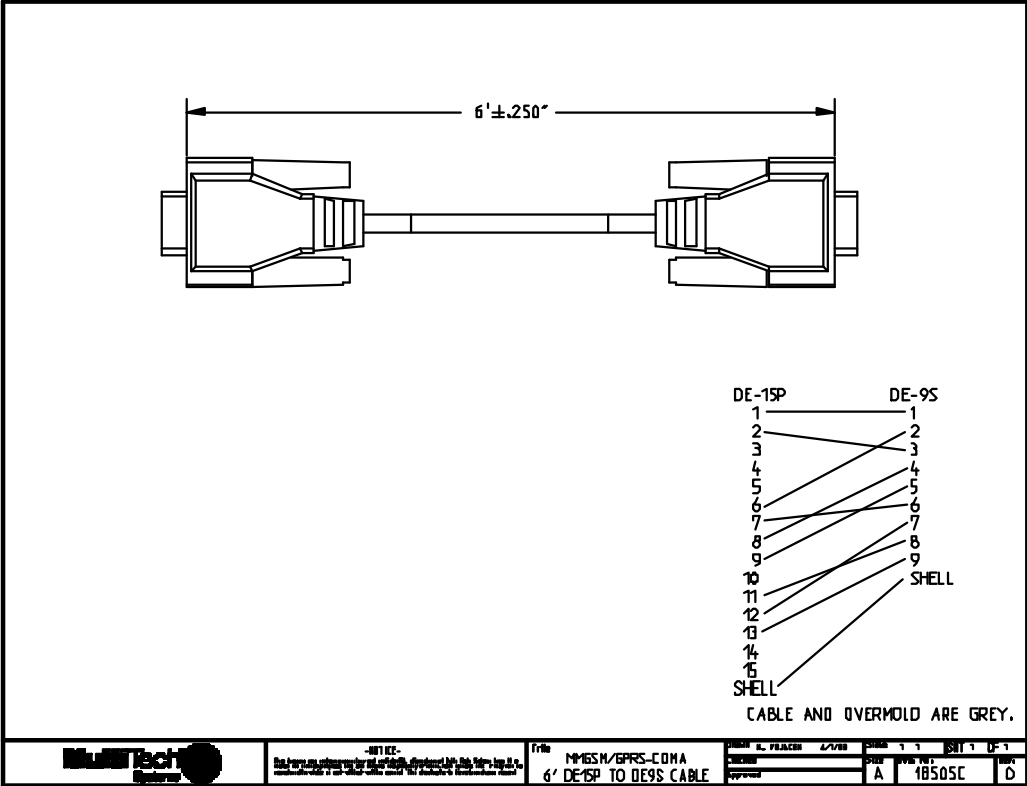
AT&T = "0000"  
T-Mobile = "500"

Here is an example of how to send an SMS message to an email account:

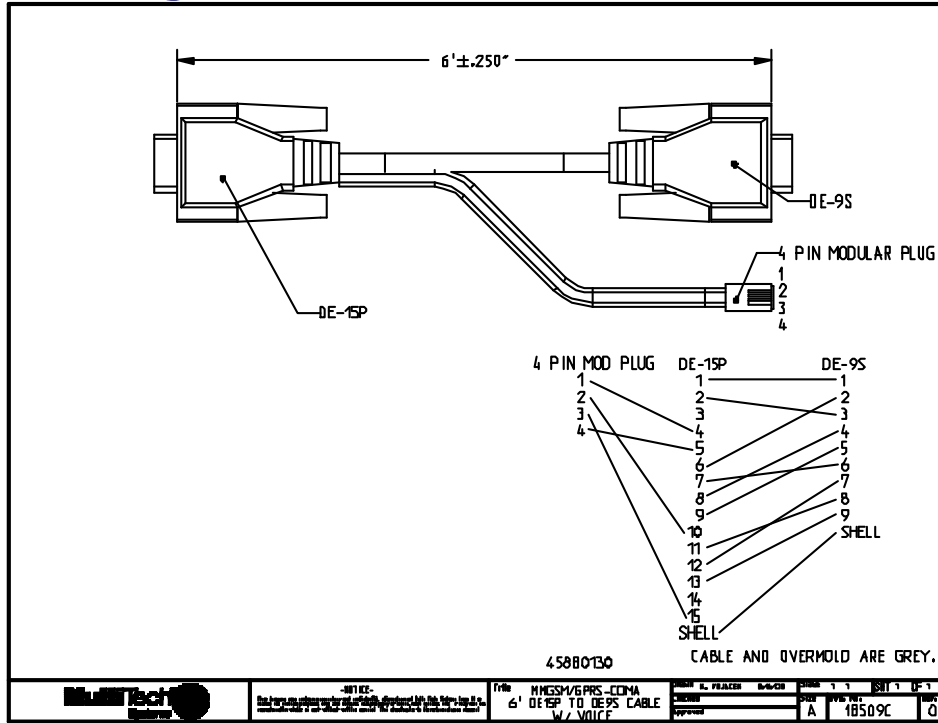
```
AT+CMGS="0000"  
> email@multitech.com My message goes here. <ctrl +Z>
```

# Appendix A – Cables

## Data Cable Diagram – No Voice

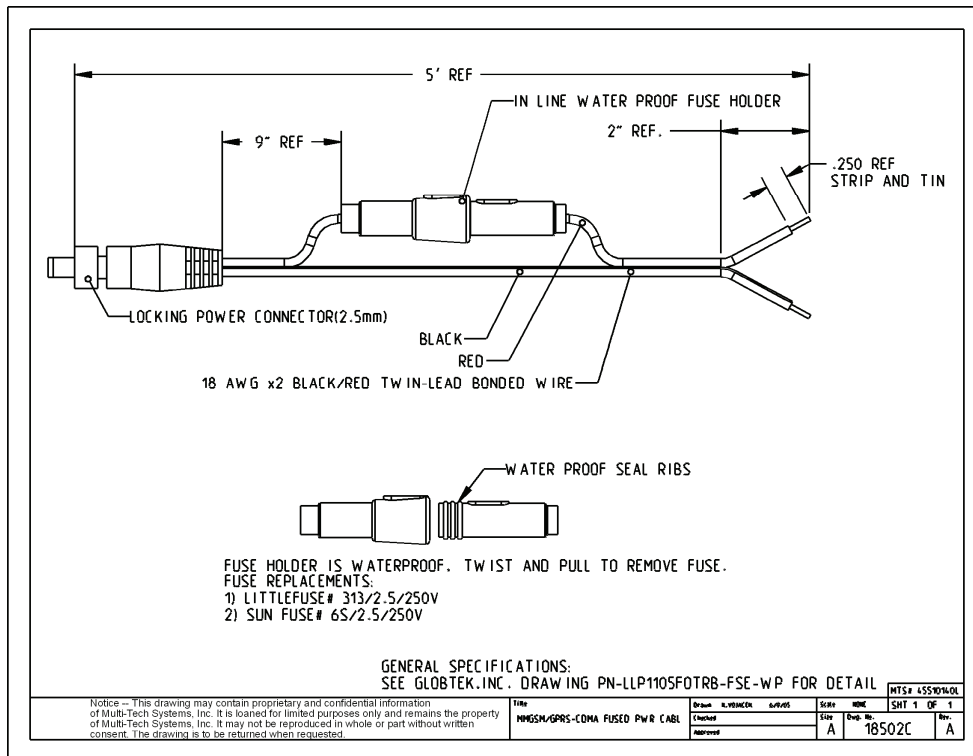


## Data Cable Diagram – with Voice



## Fused DC Power Cable Dimensions How to Change the Fuse

The Fused DC power cable is provided when a single unit is purchased.



# Appendix B - Waste Electrical and Electronic Equipment (WEEE) Statement

July, 2005

The WEEE directive places an obligation on EU-based manufacturers, distributors, retailers and importers to take-back electronics products at the end of their useful life. A sister Directive, ROHS (Restriction of Hazardous Substances) complements the WEEE Directive by banning the presence of specific hazardous substances in the products at the design phase. The WEEE Directive covers all Multi-Tech products imported into the EU as of August 13, 2005. EU-based manufacturers, distributors, retailers and importers are obliged to finance the costs of recovery from municipal collection points, reuse, and recycling of specified percentages per the WEEE requirements.

#### Instructions for Disposal of WEEE by Users in the European Union

The symbol shown below is on the product or on its packaging, which indicates that this product must not be disposed of with other waste. Instead, it is the user's responsibility to dispose of their waste equipment by handing it over to a designated collection point for the recycling of waste electrical and electronic equipment. The separate collection and recycling of your waste equipment at the time of disposal will help to conserve natural resources and ensure that it is recycled in a manner that protects human health and the environment. For more information about where you can drop off your waste equipment for recycling, please contact your local city office, your household waste disposal service or where you purchased the product.

