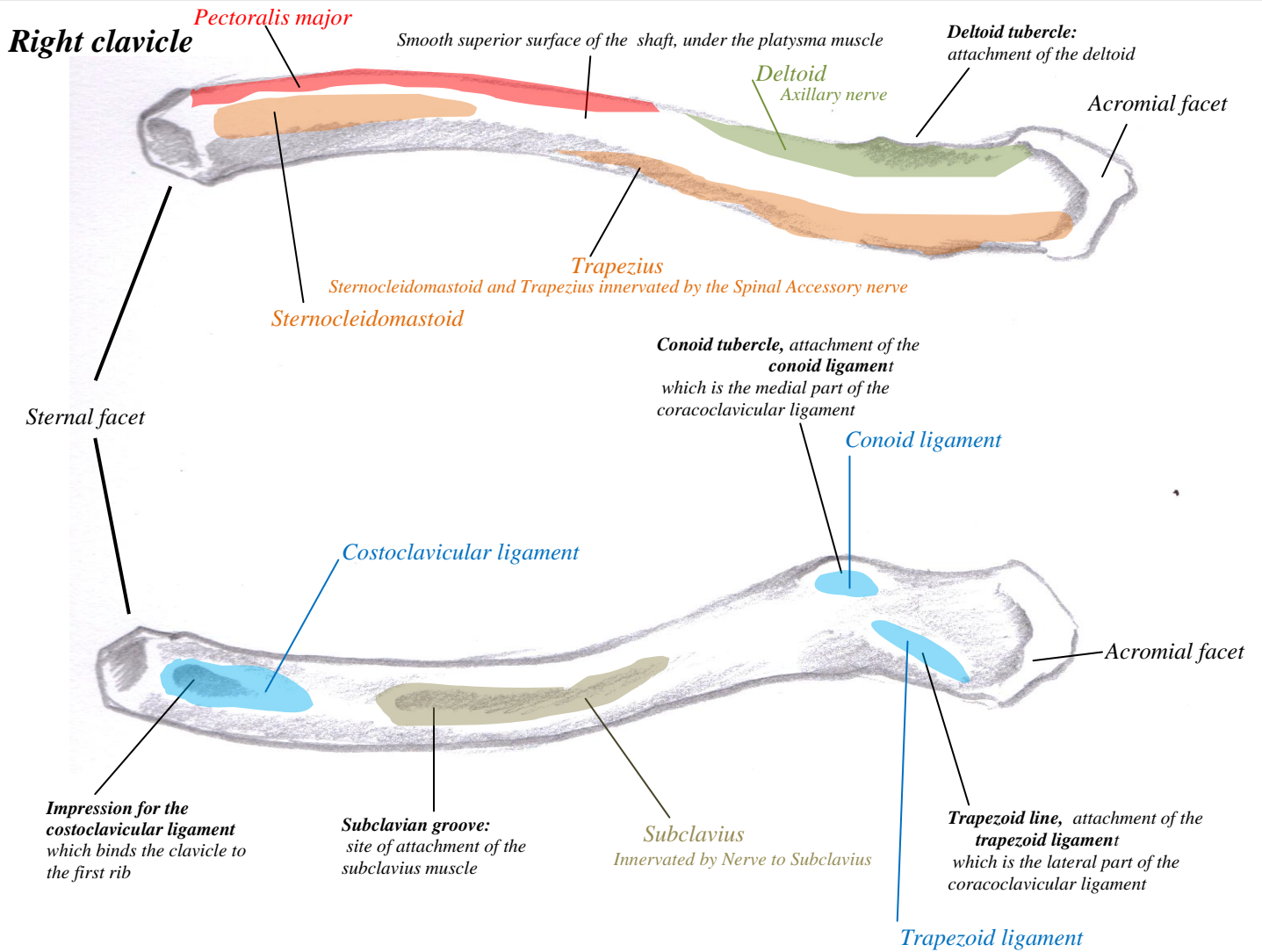


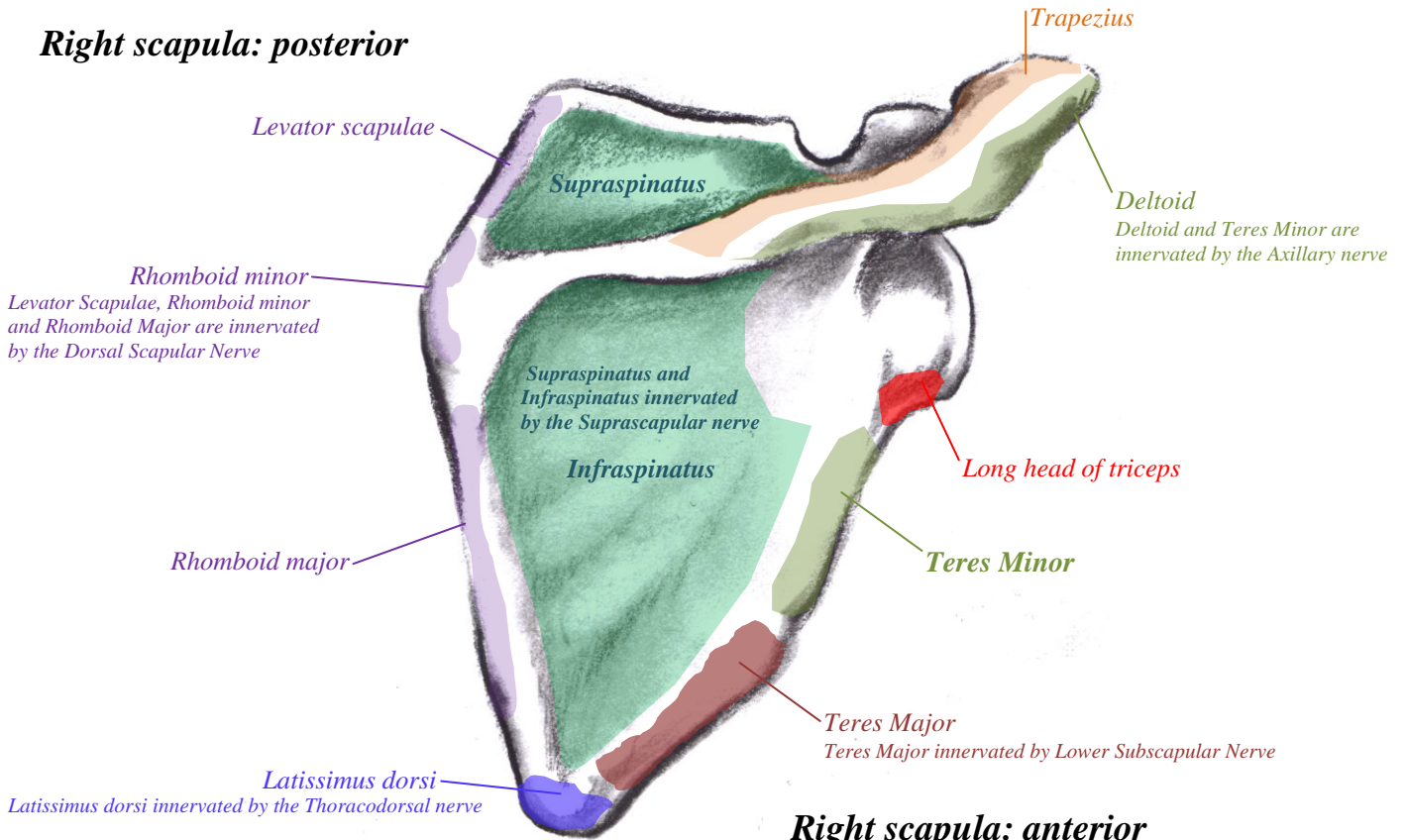
# Muscle Attachment Sites in the Upper Limb

## The Clavicle

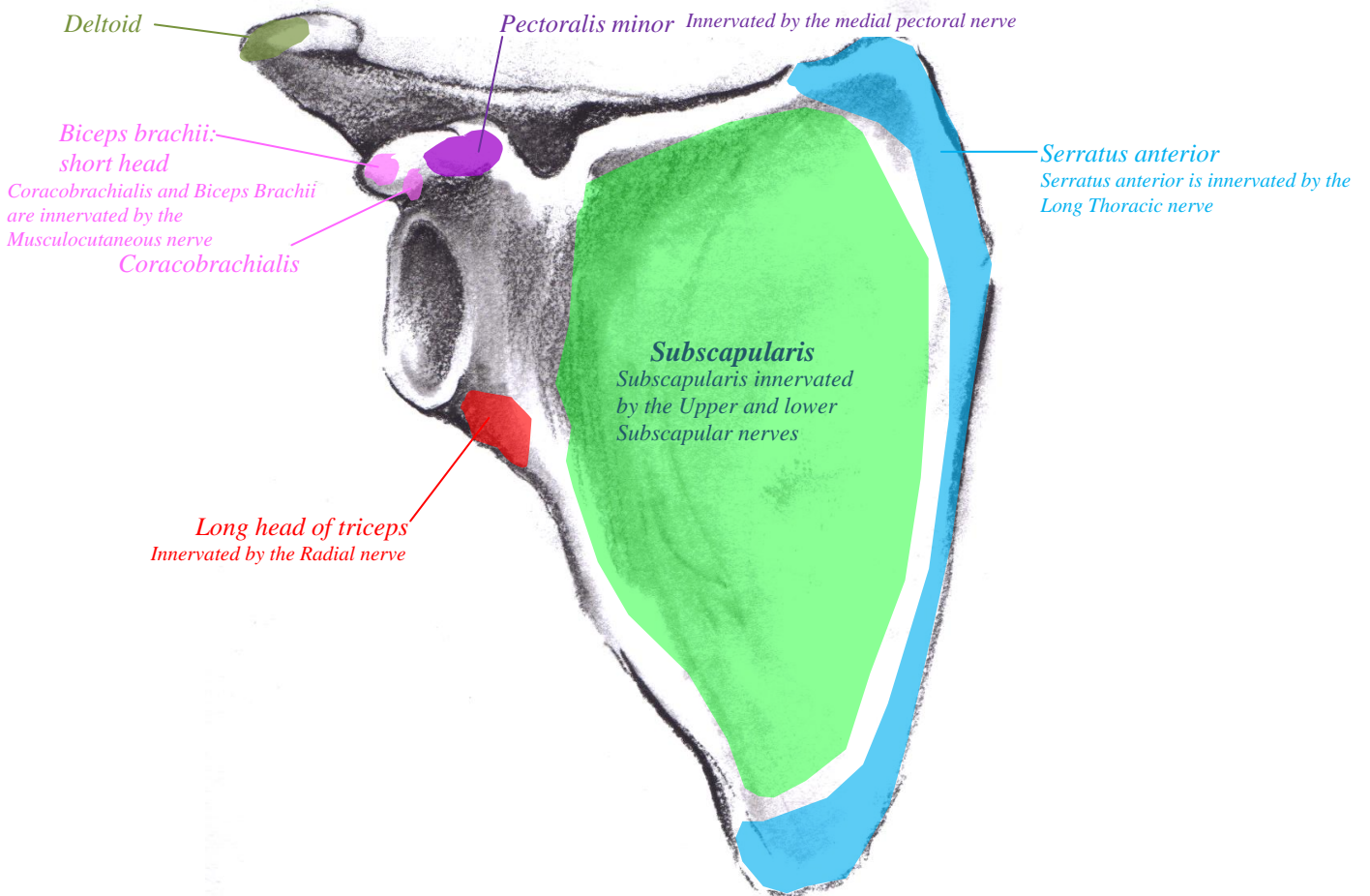


# The Scapula

## Right scapula: posterior

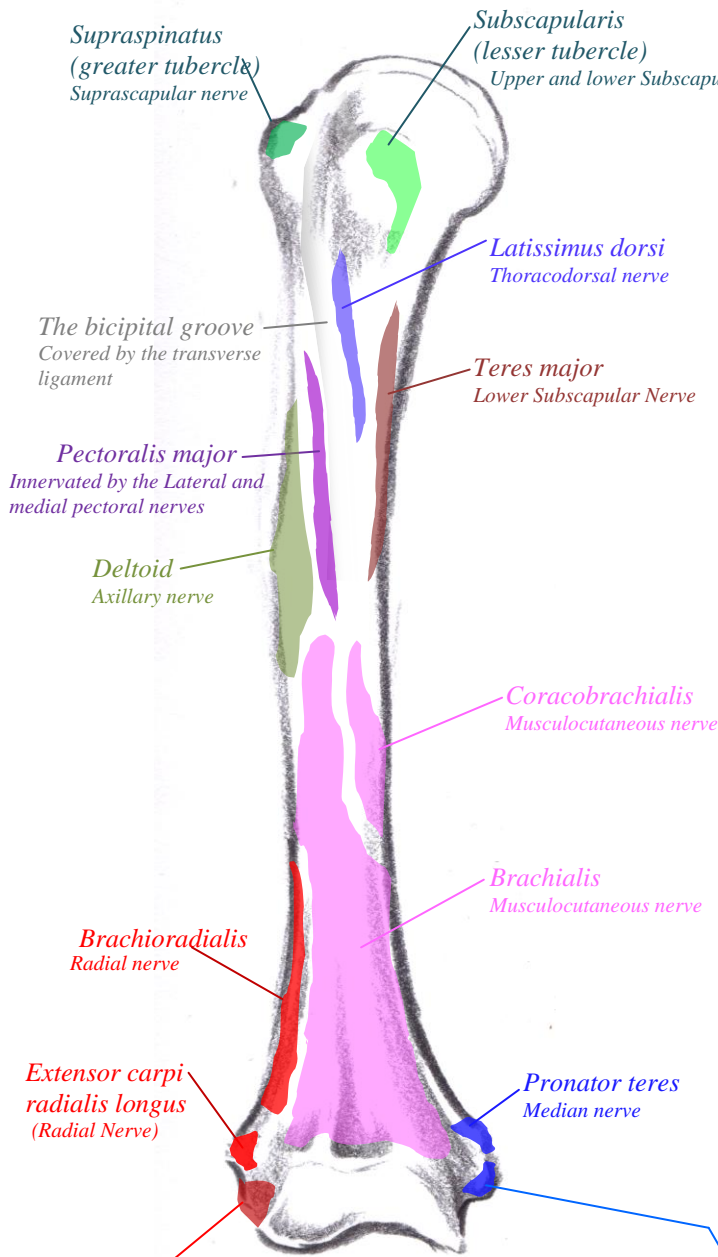


## Right scapula: anterior



# The Humerus

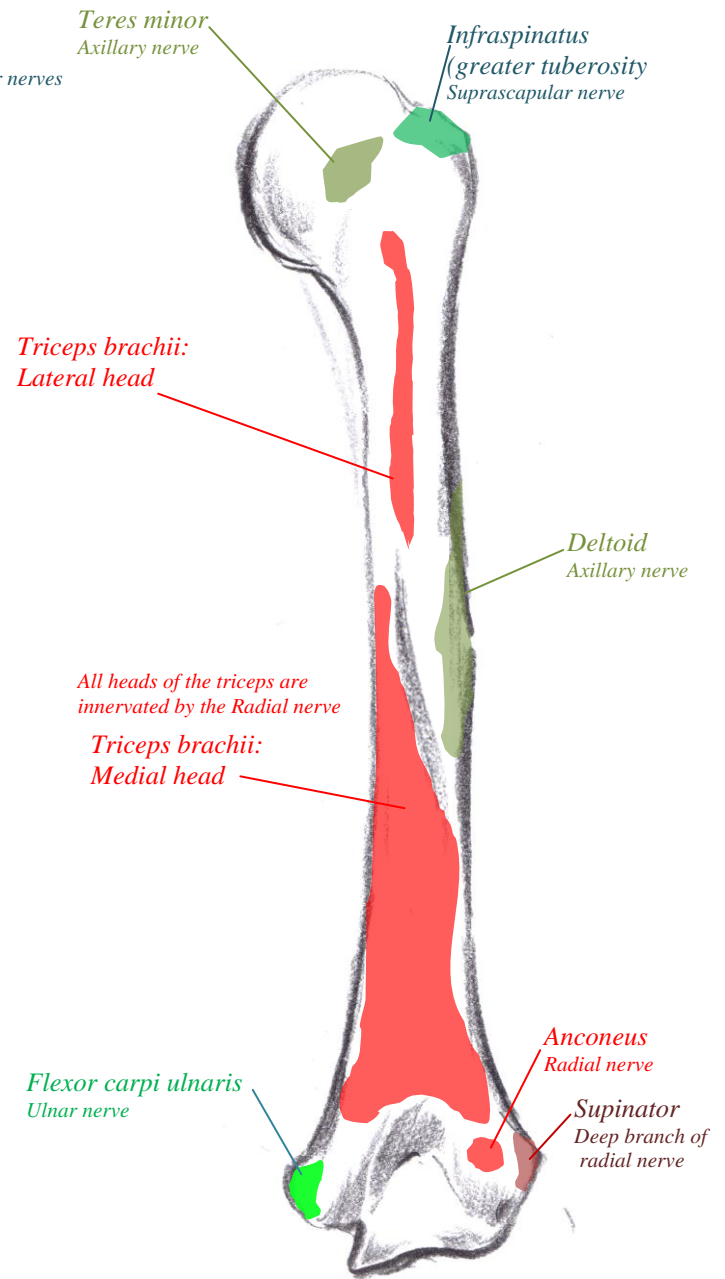
## Right Humerus: anterior



### Common extensor origin:

- Extensor carpi radialis brevis (deep branch of the radial nerve)
- Extensor digitorum (posterior interosseous nerve)
- Extensor digiti minimi (posterior interosseous nerve)
- Extensor carpi ulnaris (posterior interosseous nerve)
- 

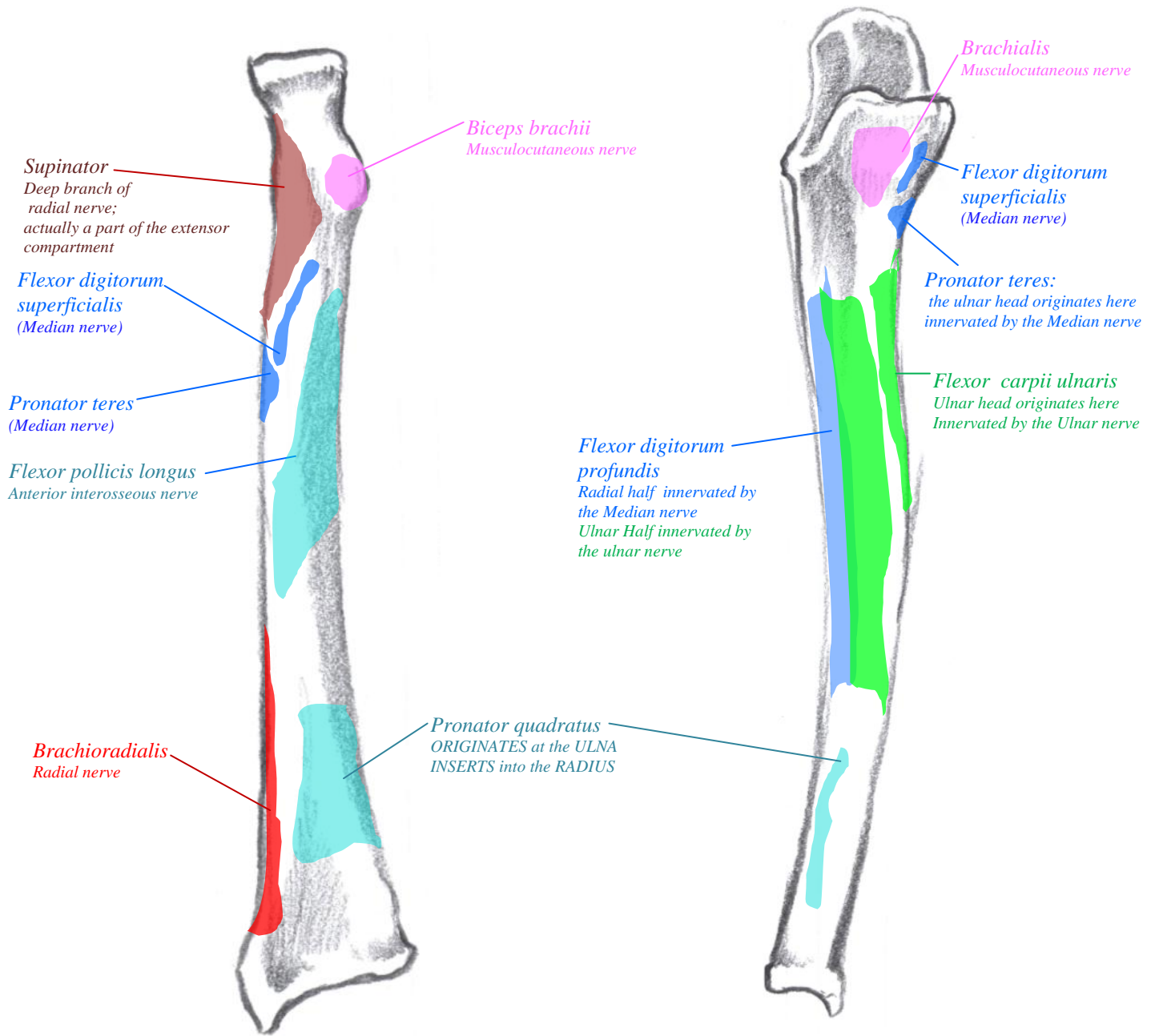
## Right Humerus: posterior



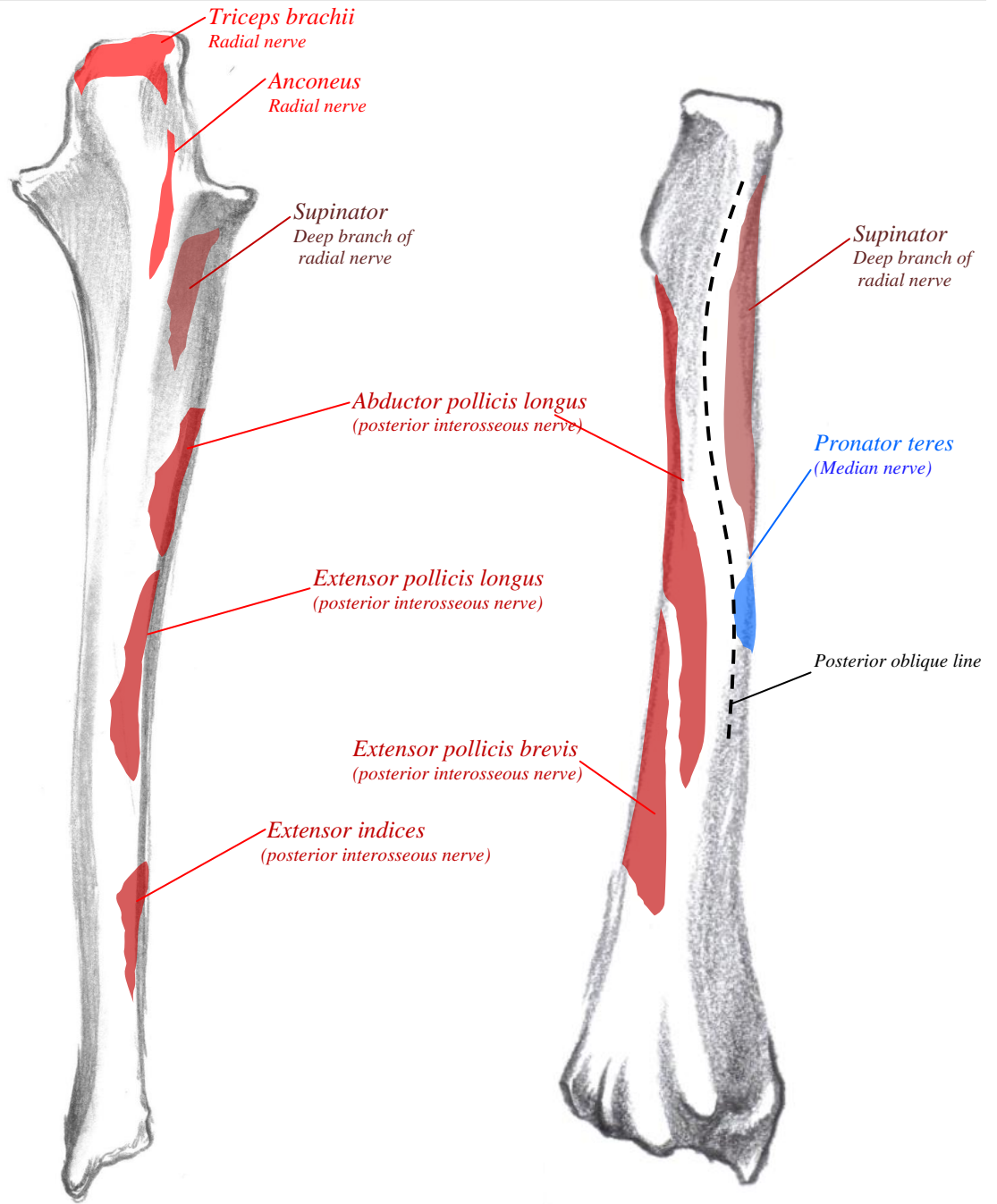
### Common flexor origin:

- Flexor carpi radialis (Median nerve)
- Palmaris longus (Median nerve)
- Humeroulnar head of the FLEXOR DIGITORUM SUPERFICIALIS (Median nerve)
-

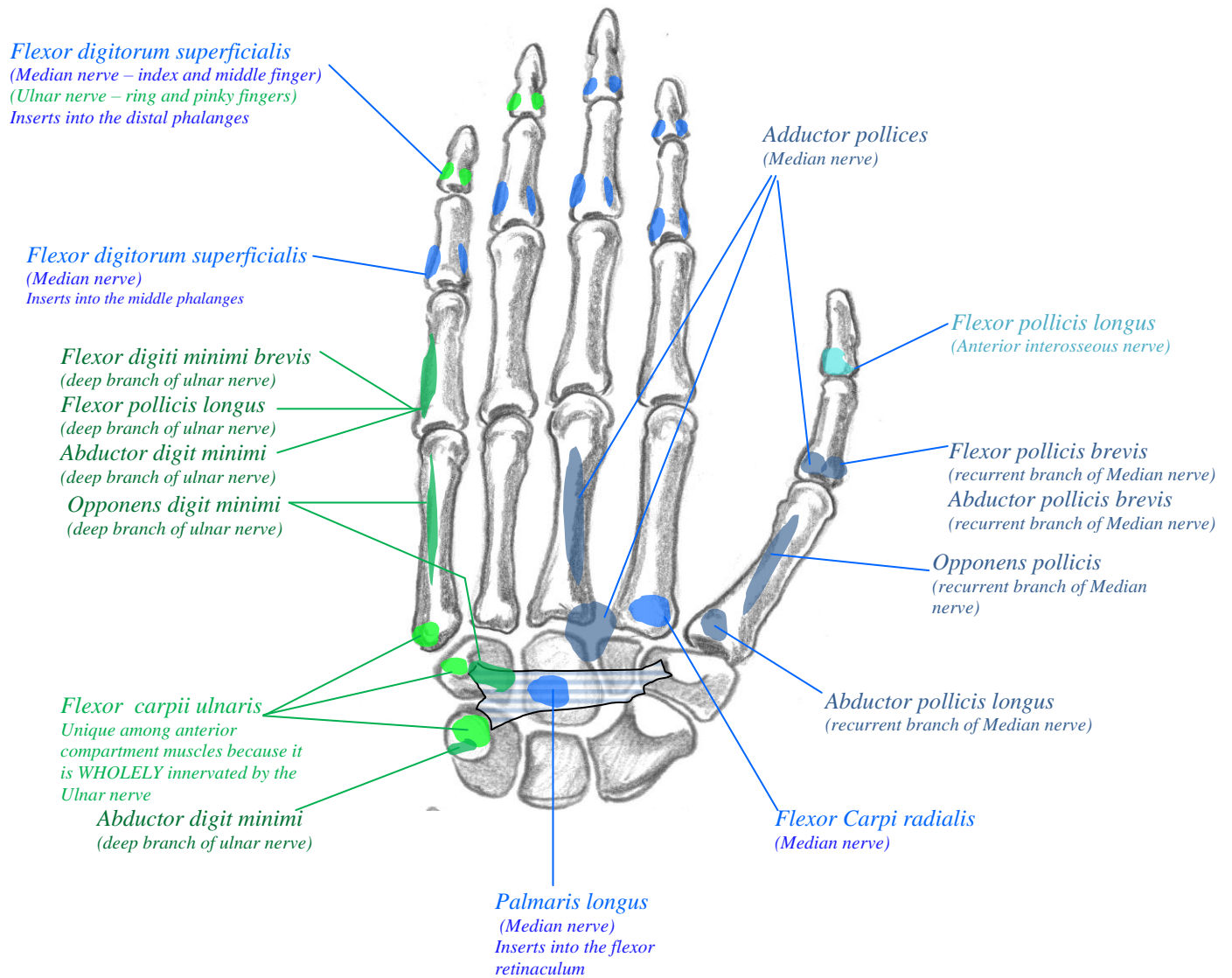
# The Radius and Ulna: Flexor compartment



## The Radius and Ulna: dorsal surface



## The carpus and hand: palmar surface



**Opponens pollicis brevis, abductor pollicis brevis and flexor pollicis brevis all originate from the flexor retinaculum**

# The carpus and hand: dorsal surface

