



# The Summer of Music! 2015

MUSIC PROGRAMS FOR ALL AGES AT THE MUSIC SCHOOL OF DELAWARE



**NEW CASTLE, KENT & SUSSEX COUNTY**  
serving DE, PA, MD and NJ

LESSONS • CLASSES • WORKSHOPS • PIANO COMPETITION

*Programs for every age and level!*

REGISTER  
BY MAY 1  
AND SAVE  
\$20!



# Make Music part of your summer!

The Music School of Delaware is YOUR place for summer fun! Summer is the perfect time for private study and exploring new instruments, camps or programs. Expand your child's or your own musical horizons! Whether you live in Delaware, Pennsylvania, Maryland, New Jersey or beyond, we have a program just for you!

## New Castle County

## Kent & Sussex County

PRIVATE STUDY ..... 3  
 EARLY CHILDHOOD  
 MUSIC & MOVEMENT ..... 3 & 4  
 WORKSHOPS ..... 4 & 5  
 STRING PROGRAMS ..... 5  
 DELAWARE ORCHESTRAL &  
 CHAMBER MUSIC INSTITUTE ..... 5  
 PIANO PROGRAMS ..... 6  
 MUSICIANSHIP ..... 6  
 COMPOSITION ..... 6  
 ADULT PROGRAMS ..... 7

PRIVATE STUDY ..... 7  
 EARLY CHILDHOOD  
 MUSIC & MOVEMENT ..... 8  
 WORKSHOPS,  
 CLASSES & CAMPS ..... 8  
 ADULT PROGRAMS ..... 8

*The Essentials*  
 REGISTRATION FORM ..... 9 & 10  
 POLICIES & INFORMATION ..... 11

**Save \$20!**  
**Register by May 1 and we'll waive your processing fee!**  
 Registration deadline is June 8 and space is limited, so please register early. Financial assistance is available; financial aid application forms must be submitted at the time of registration.

## 2015 Private Lesson Calendar

Week	Monday	Tuesday	Wednesday	Thursday	Friday
1	6/22	6/23	6/24	6/25	6/26
2	6/29	6/30	7/1	7/2	7/10*
3	7/6	7/7	7/8	7/9	7/17*
4	7/13	7/14	7/15	7/16	7/24*
5	7/20	7/21	7/22	7/23	7/31*
6	7/27	7/28	7/29	7/30	8/7*
7	8/3	8/4	8/5	8/6	8/14*
8	8/10	8/11	8/12	8/13	8/21*

\*Closed Friday, July 3 therefore remaining Friday lesson days are offset by a week.

## Questions?

**Contact us at:**  
 WILMINGTON BRANCH  
 (302) 762-1132  
 MILFORD BRANCH  
 (302) 422-2043  
[musicsofdelaware.org](http://musicsofdelaware.org)

# New Castle County

WILMINGTON BRANCH 4101 Washington Street, Wilmington DE 19802 • (302) 762-1132



ALL  
ages &  
levels

## Private Lessons

Learn voice, strings, fiddle, woodwinds, brass, percussion, piano, organ, harp-sichord, harp/Celtic harp, guitar, bass guitar, dobro or mandolin! A minimum of two hours of lessons is required of 30, 45 or 60 minutes in length. Regular Suzuki Academy group classes resume Fall 2015.

**When** See calendar on page 2

**Cost** \$145 for 2 hours;  
additional lessons are  
\$36.25 per half hour

### Instrument Introduction (for current students)

Summer is a great time to explore a new instrument without a long-term commitment! Register by May 1 and receive \$10 off the first 2 hours of private lesson rates for any new instrument. Regular registration policies and summer private study schedules apply. Contact the Wilmington Branch registrar for details and rental availability!

## Early Childhood Music & Movement

ages 18 months to 9 years • featuring Musikgarten & Kindermusik®

### Family Music Play Date

Come see what we are all about! Experience a fun morning of music, instrument play, dance and movement activities with your child.

**When** Wednesday, June 17  
10-10:45am

**Cost** FREE!

ages  
18m-5

### Beach Days

Crabs are scuttling, fish are swimming, toes are wiggling, bells are jingling and the sun is shining! This music-filled class includes singing, dancing, active-listening and a variety of instruments.

**When** Wednesdays:  
June 24, July 8, 15, 22  
10-10:45am

**Cost** \$60 per 4-week session  
+ \$15 materials

ages  
18m-3½  
with adult

### On the Road: Go Van Go!\*

Take imaginary trips to the carnival, cottage and beach through music, stories, snacks and crafts! Parents join for final 15 minutes each day.

**When** Wednesdays:  
June 24, July 1, 8, 15, 22  
9:30-11:30am

**Cost** \$145 per 5-week session  
+ \$33 materials (CD, book,  
instrument)

ages  
3-5



### Summer Evenings

Songs, instruments, finger plays, musical stories and dances inspire families to explore and discover the wonders of the natural world and our many neighborhood animal friends.

**When** Wednesdays:  
June 24, July 8, 15, 22  
5:30-6:15pm

**Cost** \$60 per 4-week session  
+ \$16 materials

ages  
18m-4½  
with adult

\* A snack is provided for marked classes. If your child has specific food or environmental allergies, or pertinent medical conditions, please list them on the Registration Form.



# Early Childhood Music & Movement

ages 18 months to 9 years • featuring Musikgarten & Kindermusik® (cont.)



## Instrumental Sampler

A fun exploration of flute, piano, voice and violin. Singing, games and group lessons prepare your child for future music study.

**When** Mon-Fri: June 22-26  
9:30am-12:30pm

ages  
6-9

**Cost** \$200 per week + \$27  
instrument rental (if available)

## Folk Music Fun

ages  
6-9

Explores multi-cultural folk music through singing, storytelling, dancing and instruments like the guitar, ukulele, dulcimer and autoharp. Children develop an awareness of rhythm, pitch and musical style, enhancing both their fine and gross motor skills.

**When** Mon-Fri: June 22-26, 1-4pm

**Cost** \$175 per week  
+ \$40 materials (dulcimer kit)

## Make it a Full Day!

Enjoy *Instrumental Sampler* and *Folk Music Fun* all week from 9:30am to 4pm at a discounted rate of \$340 tuition + \$67 materials (bring bagged lunch).

## Summer Arts Program\*

Develop your child's creativity, imagination and self-expression. Each day includes music class and at least one other discipline: dance, creative movement, visual arts, crafts, language, yoga, drama (full day only)—all taught by professional teaching artists. The week concludes with family time on Friday.

ages  
3½-5½  
half day

**When** Mon-Fri: July 27-31  
9am-12pm (half day)

**Cost** \$180 for 5 half days

ages  
5½-8  
full day

**When** Mon-Fri: July 27-31  
9am-3pm (full day)

**Cost** \$360 for 5 full days

## Jungle Beat\*

Frogs, spiders, monkeys and snakes, oh my! What could be more exciting than exploring the jungle and its many creatures through songs, drums, crafts and activities?

**When** Mon-Fri: August 3-7  
9am-12pm

ages  
5-8

**Cost** \$175 per week + optional  
\$32 materials (CD and drum)

## Jungle Drama

ages  
5-8

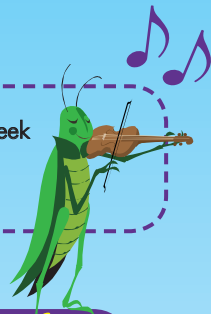
Campers write and direct their own "Jungle Dramas" pretending to be animals, on safari and more! Enhances creative movement, interpretation, improvisation and speech patterns through short scenes.

**When** Mon-Fri: August 3-7, 1-4pm

**Cost** \$175 per week

## Make it a Full Day!

Enjoy *Jungle Beat* and *Jungle Drama* all week from 9am to 4pm at a discounted rate of \$315 tuition + \$32 optional materials (bring bagged lunch).



## Intro to Keyboard

Travel the world through the keyboard, celebrating music, folk dances and cultures! Explore patterns and improvisation with singing, dancing, drumming and ensemble play.

**When** Mon-Fri: August 3-7  
9:30-11:30am or 1-3pm

ages  
6-9

**Cost** \$130 per week  
+ \$25 materials (book & CD)



\* A snack is provided for marked classes. If your child has specific food or environmental allergies, or pertinent medical conditions, please list them on the Registration Form.



## Workshops

youth to adult

### Flutefest!

featuring Guest Flutist  
Dr. Adeline Tomasone

Flutefest! dedicates a whole day to the flute with enrichment activities and the opportunity to work with guest clinician Dr. Adeline Tomasone. A performer with many major ensembles in the region, Dr. Adeline Tomasone will be presented in recital, as well as work with participants throughout the day.

ages  
8 to  
adult

**With** Dr. Lynne Cooksey; flute faculty

**When** Saturday, June 27, 9am-3:30pm

**Cost** \$75 (bring bagged lunch)

## Brass Day

Come blow your horn! Featuring diverse brass ensemble selections, you'll play in guided sectionals and rehearsals in preparation for an afternoon concert. Includes a short recital by faculty.

**With** Katelynn Griess, trombone;  
Malcolm McDuffee, trumpet;  
Dr. Anna Skrupky, horn

**When** Saturday, July 25, 10am-4pm

**Cost** \$75 (bring bagged lunch)

ages  
13 to  
adult

## Chamber Music for Everyone

Discover the joy of chamber music and hone your small ensemble skills!

**Level** Intermediate to Advanced Students  
(requires interview with coordinator)

**When** TBD, four 60-minute sessions

**Cost** \$138 for 2 students;  
\$112 for 3+ students

ALL  
ages

## Beginner Guitar Camp

This fun and lively class will cover proper hand positions, simple melodies, basic chords, ensemble playing and good practice habits.

**With** Christopher Braddock

**When** Mon-Fri: July 6-10  
6:30-7:15pm

**Cost** \$100 + \$20 for guitar rental  
(if necessary, limited availability)

ages  
8-12

## Jazz Combo Camp

Come experience improvisation, jazz theory and combo playing in a fun and relaxed environment.

**With** Paul Boris

**When** Mon-Fri: July 6-10, 10am-12pm

**Cost** \$220

ages  
13-18

# String Programs

ages 3 to 18

## Jump Start Twinkles

An introduction to the Suzuki method and philosophy for violin, viola and cello, Jump Start Twinkles allows you and your child to experience music-making in a fun, comfortable environment. Students who are considering the Suzuki Academy are encouraged to join us and "jump start" their Suzuki studies.

**With** Kate Inie-Richards, Jessica Hoffman,  
Rowena Gutana

**When** Mon-Fri: July 20-24, 9:30-11am;  
Mon: July 20, Parent Talk,  
6:30-8:30pm (parents only)  
Parents must attend all classes

**Cost** \$100 + \$22 materials (box instrument,  
wooden bow, foot chart, etc)

ages  
3-8

## Summer Suzuki Academy Group Classes & Play-In

Keep the momentum going! Designed to help Suzuki violin students keep review pieces fresh and continue to practice throughout the summer. Attendance at all sessions is not mandatory. The play-in on July 30 will be held in a local park, weather permitting.

**Level** Suzuki Academy violin  
students in Books 1 & 2 (must  
have completed Twinkles)

**With** Julianne Murphy, Jessica Hoffman

**When** Thursdays: July 9, 16, 23, 30, 6-7pm

**Cost** \$65 per 4-week session

## Youth String Camp

Experience the excitement of playing in a string ensemble! Musical activities will strengthen reading skills and musicianship while different styles/genres make reading and playing together interesting and fun. Sectionals, individual master classes and musicianship classes are included.

**When** Mon-Fri: July 20-24, 9am-4pm  
Concert: Friday, July 24, 5pm

**Cost** \$350 (bring bagged lunch)

### Requirements

Minimum repertoire:

Violin Suzuki Book 1 (Happy Farmer) or equivalent - Scales in G, D & A Major (2 octaves)  
Viola Suzuki Book 2 or equivalent - Scales in D & G Major (1 octave) & C Major (2 octaves)  
Cello Suzuki Book 2 or equivalent - Scales in D & G Major (1 octave) & C Major (2 octaves)  
Bass Suzuki Book 1 (late) or equivalent - Scales in G, D & A Major (1 octave)

ages  
6-12



# Delaware Orchestral & Chamber Music Institute

intermediate to advanced students to 18 years

A comprehensive camp focused on orchestral and chamber music for advanced/intermediate string, woodwind, brass and percussion students. Participate in orchestra rehearsals, sectionals, instrumental and conducting master classes, chamber music sessions, movement sessions and special presentations by professional guest

artists and ensembles. A placement audition is required for participation. Counselor positions (100% tuition remission) will be awarded to high school seniors and college freshmen by audition. Fellowships (including a small stipend) will be awarded to college sophomores and older by audition. All other students are eligible to audition

for select Leadership Scholarships (25% off tuition).

**Level** Intermediate/advanced students to 16 years by audition; Counselors/fellows: Ages 17+

**With** Maestro Simeone Tartaglione;  
Melinda Bowman, Eric Coyne  
(coordinators), faculty & special guests

**When** Mon-Fri: July 27-July 31  
9am-5pm

**Concert:** Friday, July 31

**Cost** \$425 (includes lunch)

**Auditions** (call to schedule)

Saturday, June 6, 12-3pm

Saturday, June 13, 10am-3pm





# Musicianship

ages 7 to adult

## Private Musicianship Lessons

Immerse yourself in the language of music with a schedule that suits you. A minimum of two hours of lessons is required.

**When** See calendar on page 2 for dates  
**Cost** \$90 for 4 half-hour lessons; additional lessons are \$22.50 per half hour (requires phone interview)

## Summer Piano Institute

featuring Guest Pianist  
Mikhail Yanovitsky

A workshop for advancing pianists with private lessons, master classes, duo piano and duet rehearsals, coaching sessions, group classes and introductory harpsichord and organ instruction. Work with guest artists and Music School keyboard faculty in solo and group settings focusing on performance skills, musicianship and literature. Pianist Mikhail Yanovitsky will serve as the guest pianist/clinician for the week. The Philadelphia Inquirer says "His ability to execute the details while at the same time clothing the music in broad colors and expansive melodic gesture recalled a manner of Chopin playing from past generations." The week culminates in recital performances. Participants may enter The Music School of Delaware Piano Competition for free!

**With** Mikhail Yanovitsky, piano; Lotus Cheng (coordinator); faculty and special guests

**When** **Mon-Fri: July 13-17, 10am-4pm**  
**Recital: Saturday July 18, 11am**

**Cost** \$375 (requires consent of instructor, bring bagged lunch)

ages  
10-18

## The Music School of Delaware Piano Competition

This competition awards cash prizes and certificates for piano performance based on technical fluency, accuracy, musical interpretation and style. Each contestant performs one original composition for piano (arrangements and transcriptions are not eligible).

ages  
10-18

**When** **Tuesday, July 14, 11am**  
**Age Categories** (as of July 14, 2015)

- I: ages 10-12, 5-minute max.
- II: ages 13-15, 7-minute max.
- III: ages 16-18, 10-minute max.

### Rules

- Deadline for application (with fee) is July 1, 2015. Students must complete BOTH sides of the registration form (page 9-10) to enter.
- Students are eligible to compete in a given category if they have not previously received first prize in the same age category.
- All music must be memorized and an original copy provided for the judge(s); no photocopies allowed.
- Winners will be selected based on an audition before judges. Criteria include technical fluency, accuracy, musical interpretation and style.
- If only one contestant applies in a category or if there is not a qualified contestant, the judge(s) may decide not to select a winner.
- The judge(s)' decision is final.
- First-prize winners will be required to perform in a master class at the end of the competition.

### Awards

Cash prizes and certificates will be awarded to the winners in each category. The number of prizes awarded is at the discretion of the judge(s). Winners will be announced and awards presented in a master class at the conclusion of the competition.

### Application Fee

\$40 (waived for Summer Piano Institute participants); no Summer Processing Fee



# Composition

ages 9 to 18

## Be a Composer!

Take your first steps as a composer! Explore creative composition, improvisation, and notation by hand or with the Noteflight website.

**With** Chuck Holdeman  
**When** **Mon-Fri: June 22-26, 9-10am**  
**Concert: Friday, June 26**

**Cost** \$110 (requires phone interview, older/younger students may be considered)

ages  
9-12

## Delaware Young Composers Workshop

Compose, perform and record your own music, with expert guidance on improvisation, musicianship, software and more! Open to all, though music-reading is required.

**With** Chuck Holdeman  
**When** **Mon-Fri: June 22-26**  
**10am-12pm**  
**Concert: Friday, June 26**

**Cost** \$220 (requires phone interview, older/younger students may be considered)

ages  
13-18



Mikhail Yanovitsky

# Programs for Adults!

in New Castle County



## Adult Sampler

Dive in to a new instrument! Build skills on the piano and learn to sing! Explore composition (you don't have to read a note!) and join our noted guest artists in thought-provoking music topics.

**When** Mon-Fri: July 6-10, 9am-12pm  
**Cost** \$205 (requires phone interview)

## Piano Sampler for Adults

Try the piano! Learn to read music, play expressively, and practice effectively on a full-size digital piano.

**With** Margaret Love  
**When** Mon-Friday, June 22-26, 6-7:30pm  
**Cost** \$190 + \$5 materials (requires phone interview, regular access to a piano or full-size keyboard)

## Adult Cello Festival

"When I started learning the cello, I fell in love with the instrument because it seemed like a voice—my voice." Mstislav Rostropovich. Find your voice during our 4-day festival for cello enthusiasts. Participate in small ensembles and cello orchestra, and enjoy a faculty recital. Socialize at a reception on Friday night and a lunch on Saturday.

**When** Thurs-Sun: June 25-28;  
 (Thurs, 6:30-8:30pm; Fri, 6-9pm;  
 Sat, 10:30am-2:30pm; Sun, 2-4pm)  
**Cost** \$180 (requires phone interview)

## Chamber Music for Adults

Play chamber music with musicians like yourself! Faculty and guest artists will work with ensembles on exciting pieces. Ensembles will vary with participation, so encourage your musical friends to join the fun!

**Level** Intermediate and advanced students  
**When** Mon-Fri: July 6-10, 10:30am-12pm  
**Cost** \$180 (requires interview with dean)

## Guitar Exploration

Spice up your chordal playing in an ensemble environment and learn tools for improvising in any style of music! A workshop for intermediate to advanced guitarists.

**With** Christopher Braddock (coordinator); guitar faculty and special guests  
**When** Saturday, July 11, 9:30am-12:30pm  
**Cost** \$45 (bring bagged lunch & guitar, plus portable amp/cord if electric)

## Also for Adults:

- Private Study ..... 3
- Flutefest..... 4
- Brass Day ..... 5
- Chamber Music for Everyone..... 5
- Private Musicianship Lessons..... 6

# Kent & Sussex County

MILFORD BRANCH 10 South Walnut Street, Milford DE 19963 • (302) 422-2043

## Private Lessons

Learn voice, strings, woodwinds, brass, percussion, piano, guitar, bass guitar, mandolin or dobro! A minimum of two hours of lessons is required. Regular Suzuki Academy group classes resume Fall 2015.

**When** See calendar on page 2  
**Cost** \$105 for 4 half-hour lessons; additional lessons are \$26.25 per half hour

## Instrument Introduction (for current students)

Summer is a great time to explore a new instrument without a long-term commitment! Register by May 1 and receive \$10 off the first 2 hours of private lesson rates for any new instrument. Regular registration policies and summer private study schedules apply. Contact the Milford Branch front desk for details and rental availability!



ALL ages & levels



More programs over...

# Early Childhood Music & Movement

ages 18 months to 6 years

## Family Music Play Date

Come see what we are all about! Experience a fun evening of music, instrument play, dance, and movement activities with your child.

**When** Thursday, June 18  
5:30-6:15pm

**Cost** FREE!

ages  
18m-5



## Beach Days

Crabs are scuttling, fish are swimming, toes are wiggling, bells are jingling and the sun is shining! This music-filled class includes singing, dancing, active-listening and a variety of instruments.

**When** Thursdays: June 25, July 9, 16, 23  
5:30-6:15pm

**Cost** \$50 per 4-week session  
+ \$15 materials

ages  
18m-4½  
with adult

## Seashore

Wade into the magical place where ocean meets land! Explore marine animals and ocean life through singing, dancing, instruments and sensory activities. Excellent preparation for our Musical Explorers class in the fall.

**When** Thursdays: June 25, July 9, 16, 23  
3-5pm

**Cost** \$125 per 4-week session  
+ \$22 materials (folder and CD)

ages  
4-6

# Workshops, Classes & Camps

ages 3 to 17

## Jump Start Twinkles

An introduction to the Suzuki method and philosophy for violin, Jump Start Twinkles allows you and your child to experience music-making in a fun, comfortable environment. Students who are considering the Suzuki Academy are encouraged to join us and "jump start" their Suzuki studies.

ages  
3-8

**With** Kate Inie-Richards  
**When** Mon-Thurs: July 13-16, 10-11:30am;  
Mon: July 13, Parent Talk,  
6:30-8:30pm (parents only)  
Parents must attend all classes

**Cost** \$80 + \$22 materials (box instrument,  
wooden bow, foot chart, etc)

## Beginner Guitar Camp

This fun and lively class will cover proper hand positions, simple melodies, basic chords, ensemble playing and good practice habits.

ages  
8-12

**With** Christopher Braddock  
**When** Mon-Thurs: July 6-9, 10-10:45am

**Cost** \$80 + \$20 guitar rental  
(if necessary, limited availability)

## Summer Suzuki Academy Group Classes & Play-In

Keep the momentum going! Designed to help Suzuki violin students keep review pieces fresh and continue to practice throughout the summer. Attendance at all sessions is not mandatory. The play-in on Saturday, July 18 at 10:30am will be held at the Milford Farmers Market, weather permitting.

**With** Jessica Hoffman

**Level** Suzuki Academy violin students  
in Pre-Twinkle up to Twinkles

**When** Tuesdays: June 30, July 7, 14  
4:45-5:30pm;  
Saturday, July 18, 10:30am

**Cost** \$50 per 4-week session

**Level** Suzuki Academy violin students in  
Books 1 & 2 (must have completed  
Twinkles)

**When** Tuesdays: June 30, July 7, 14  
5:30-6:30pm;  
Saturday, July 18, 10:30am

**Cost** \$60 per 4-week session



## For Adults!

### Beginner Guitar for Adults

Join the Music School's guitar department head in a weekly intro class for beginning guitarists, covering proper hand positions, simple melodies, basic chords, ensemble playing and good practice habits.

**With** Christopher Braddock

**When** Wednesdays: June 24, July 1, 15, 22  
6:30-7:30pm

**Cost** \$75 per 4-week session  
+ materials (TBD)

### Beginner Piano for Adults

Perfect for the adult who has always longed to play the piano but has little or no musical experience. Explores theory, rhythm, technique, sight-reading, harmonization, ensemble playing and expressive performance.

**With** Melanie Leinbach

**When** Wednesdays, July 8, 15, 22, 29  
6:30-7:30pm

**Cost** \$75 per 4-week session  
+ materials (TBD)

### Woodwind Ensemble

Do you want to "blow off" some steam? Join your peers in a small woodwind ensemble! This ensemble will strengthen already acquired skills and provide a performance opportunity for amateur musicians.

**With** Larry Walker

**When** Thursdays: July 9, 16, 23, 30, 6-7pm

**Cost** \$65 per 4-week session  
+ \$15 materials







# SUMMER 2015 Registration Form

**Office Use Only**

Account # \_\_\_\_\_  
 Method of Payment:  Visa/MasterCard/Disc./Amer. Express  
 Check # \_\_\_\_\_  
 Date Received \_\_\_\_\_ Amount \_\_\_\_\_  
 Order \_\_\_\_\_ Clerk \_\_\_\_\_

Please return form and payment, including \$20 Summer Processing Fee, Tuition and Materials Fees, to the branch at which your lessons/camps/classes/workshops will be held.

 **Milford Branch**

P.O. Box 442 or 10 South Walnut St., Milford, DE 19963 • (302) 422-2043 | (302) 422-3340 (fax)

 **Wilmington Branch**

4101 Washington St., Wilmington DE 19802 • (302) 762-1132 | (302) 762-3422 (fax)

**STUDENT**

Name \_\_\_\_\_  
 Street Address \_\_\_\_\_  
 City \_\_\_\_\_  
 State \_\_\_\_\_ ZIP \_\_\_\_\_  
 Home Phone \_\_\_\_\_ Cell Phone \_\_\_\_\_  
 Birth Date \_\_\_\_\_ Grade in Sept. \_\_\_\_\_  
 School \_\_\_\_\_  
 Known Allergies \_\_\_\_\_

**PERSON RESPONSIBLE FOR PAYMENT**

Name \_\_\_\_\_  
 Street Address \_\_\_\_\_  
 City \_\_\_\_\_  
 State \_\_\_\_\_ ZIP \_\_\_\_\_  
 Phone \_\_\_\_\_  
 Email \_\_\_\_\_

**PARENT/GUARDIAN**

Mother/Guardian Name \_\_\_\_\_  Email \_\_\_\_\_  
 Employer \_\_\_\_\_  Work Phone \_\_\_\_\_  
 (Please check your preferred contact method)  Cell Phone \_\_\_\_\_  
 Father/Guardian Name \_\_\_\_\_  Email \_\_\_\_\_  
 Employer \_\_\_\_\_  Work Phone \_\_\_\_\_  
 (Please check your preferred contact method)  Cell Phone \_\_\_\_\_

**CAMP/CLASS/WORKSHOP****INSTRUMENT****DATES****TIME****TUITION/FEES**

1. \_\_\_\_\_  
 2. \_\_\_\_\_

**PRIVATE LESSONS\***

Instrument \_\_\_\_\_ Instructor \_\_\_\_\_  
 Days available:  Mon.  Tues.  Wed.  Thurs.  Fri. Instrument Introduction Program?   
 Times available \_\_\_\_\_  
 Lesson length:  30 minutes  45 minutes  60 minutes  
 Weeks available:  1  2  3  4  5  6  7  8 (Refer to calendar on page 2 and mark which weeks you are available)

\*CURRENT STUDENTS: before registering, please check with your instructor to confirm that he/she will be teaching in the summer.

**ADDITIONAL INFORMATION**—To help us better serve our community, please answer the following questions. This information is voluntary.

Does this student have any special needs or disabilities?  No  Yes (please specify): \_\_\_\_\_

What is the student's race/ethnic background?

African-American  Native American  
 Asian/Pacific Islander  Other (please specify): \_\_\_\_\_  
 Caucasian \_\_\_\_\_  
 Hispanic/Latino \_\_\_\_\_

How did you learn about the Music School?

Already enrolled  Music School publication  
 Friend/Family  Music School website  
 Advertisement  Other (please specify): \_\_\_\_\_  
 Print article/Feature \_\_\_\_\_  
 Radio/Television \_\_\_\_\_

**By signing this form, I have read and agree to the conditions and policies as stated on page 11.**

Signature \_\_\_\_\_ Date \_\_\_\_\_

## PHOTO RELEASE

I hereby give The Music School of Delaware and their legal representatives and assigns the right and permission to publish, without charge, any photographs/images of [student name] \_\_\_\_\_ taken at The Music School of Delaware or at off-site Music School functions. I release all claims with respect to copyright ownership and publications including any claim for compensation related to use of the materials. Photos/images may be used a current or future year in print, electronic or video format, including but not limited to newsletters, brochures, flyers, press releases, advertising, the annual information guide, the school's website and Facebook page, and other promotional materials.

**I give permission** for the Music School to use the above-named student's photo/image.

**I DO NOT give permission** for the Music School to use the above-named student's photo/image.

Signature (of parent if under 18) \_\_\_\_\_ Date \_\_\_\_\_

Email \_\_\_\_\_ Phone \_\_\_\_\_

## FAMILY & FRIENDS

The Music School hosts many special music events that may be of interest to grandparents or other family and friends. Please complete this form so that we can notify them of upcoming events. Thank you for your assistance!

**Name of Grandparent #1** \_\_\_\_\_

Street Address \_\_\_\_\_

City \_\_\_\_\_ State \_\_\_\_\_ ZIP \_\_\_\_\_

Phone \_\_\_\_\_ Email \_\_\_\_\_

**Name of Grandparent #2** \_\_\_\_\_

Street Address \_\_\_\_\_

City \_\_\_\_\_ State \_\_\_\_\_ ZIP \_\_\_\_\_

Phone \_\_\_\_\_ Email \_\_\_\_\_

**Name of Other Family/Friend** \_\_\_\_\_

Street Address \_\_\_\_\_

City \_\_\_\_\_ State \_\_\_\_\_ ZIP \_\_\_\_\_

Phone \_\_\_\_\_ Email \_\_\_\_\_

## THE MUSIC SCHOOL OF DELAWARE PIANO COMPETITION

Piano Competition contestants should complete the Student, Parent/Guardian and Person Responsible for Payment sections on the front of this form and fill out the remainder of the details below. Please submit the \$40 application fee with this form (waived for Summer Piano Institute participants). No Summer Processing Fee is necessary for contestants registering for the competition alone.

Contestant Name \_\_\_\_\_ Contestant Phone \_\_\_\_\_

Birth Date \_\_\_\_\_ Contestant Email \_\_\_\_\_

Private Teacher Name \_\_\_\_\_ Teacher Phone \_\_\_\_\_

Years Studied \_\_\_\_\_ Teacher Email \_\_\_\_\_

### AUDITION REPERTOIRE

### COMPOSER

### LENGTH

By signing this form, I agree that I have read and understand the information and rules of the Piano Competition as outlined on page 6. I understand that contestants selected as winners are required to perform in the master class at the end of the competition on Tuesday, July 15, 2015.

Contestant signature \_\_\_\_\_ Date \_\_\_\_\_

Teacher signature \_\_\_\_\_ Date \_\_\_\_\_

# Summer Policies & Information

## How to Register

- ➔ Registration deadline is **Monday, June 8, 2015**.
- ➔ Return completed Registration Form (pages 9–10, both sides) with full payment to the appropriate branch address.
- ➔ A \$20 nonrefundable **Summer Processing Fee** applies to summer registrations in addition to tuition and materials fees. **Fee is waived if participant registers and pays in full by May 1** for all lessons, camps, classes and/or workshops.
- ➔ **Full payment = Summer Processing Fee (after May 1) + Tuition + Materials Fee**
- ➔ **Multi-camp discount:** Enroll in more than one camp/class/workshop and get 20% off the lesser-priced camps/classes/workshops. (Does not apply to private lessons. Discount is per student, not per family. Does not apply to tuition already discounted by financial aid.)



## Enrollment

Enrollment in all programs may be limited. Registration is on a first-come, first-served basis and must be secured by paying tuition and fees in full. The Music School reserves the right to cancel camps/classes/workshops due to insufficient enrollment, in which all payments are refunded in full.

## Teacher Absence

Lessons missed due to teacher absence will be made up but are to be scheduled directly with the teacher. The Music School reserves the right to provide a refund in lieu of a make-up lesson at its sole discretion.

## Student Absence

There are no make-ups or refunds for missed lessons or classes due to student absence or for early withdrawal.

## Refund & Cancellation Policy

- ➔ **Before June 1, 2015:** Full tuition and materials fees will be refunded.
- ➔ **After June 1, 2015:** No refund of any amount will be made. Please contact the appropriate branch to cancel/withdraw.
- ➔ If the Music School cancels a camp/class/workshop, full tuition, materials fees and \$20 Summer Processing Fee (if applicable) will be refunded.

## Special Needs/Disabilities

The Music School of Delaware serves many people with special needs and developmental or physical disabilities. When registering, those with special needs or circumstances are asked to volunteer pertinent information so that the best placement can be made for the student. The Music School facilities are ADA compliant. The Wilmington Branch has an elevator that permits easy access to the second floor.

## Financial Assistance

The Music School of Delaware administers a financial assistance program intended for families who have restricted financial circumstances. Financial Aid Application Forms are available at the front desk of either branch. Completed Financial Aid Application Forms must be submitted at the time of registration. Families requesting aid must submit the \$20 Summer Processing Fee (if applicable), tuition and materials fees, as well as a Financial Aid Application Form with supporting documentation for any year in which aid is being requested, even if they have received aid in the past. However, families who are awarded financial aid for the summer do not need to reapply for the fall. If a family is not eligible for financial aid, all fees and tuition are refundable if requested.



### WILMINGTON BRANCH

4101 Washington Street  
Wilmington, DE 19802  
(302) 762-1132  
(302) 762-3422 (fax)

### MILFORD BRANCH

10 South Walnut Street  
Milford, DE 19963  
(302) 422-2043  
(302) 422-3340 (fax)

[www.musicschoolofdelaware.org](http://www.musicschoolofdelaware.org)



**Wilmington Branch**  
4101 Washington Street  
Wilmington, DE 19802

**Milford Branch**  
P.O. Box 442  
10 South Walnut Street  
Milford, DE 19963

NON-PROFIT ORG.  
U.S. POSTAGE  
PAID  
PERMIT #11  
WILMINGTON, DE



*Music Excellence for Everyone at The Music School of Delaware!*



Programs are made possible, in part, by a grant from the Delaware Division of the Arts, a state agency dedicated to nurturing and supporting the arts in Delaware, in partnership with the National Endowment for the Arts.

