

MRS. GILLIARD'S EASY MUSIC THEORY PACKET

Having problems reading the notes on the staff ?

Keep having to write letters under your music ?

Don't understand how to read rhythms ?

Don't know how to read any music at all, but you need to learn ?

Welcome. ☺

This packet is designed to help you learn some basic music theory , whether you are in Mrs. Gilliard's General Music class or one of her Band classes (or even if you're some random person on the internet who needs help reading music).

The directions are simple:

1. Read **everything** in the top section of each lesson.
2. Complete the assignment at the bottom.
3. Move to the next lesson.

Each lesson builds on top of the previous lesson and uses all the information learned in that lesson. **Don't skim or skip over any of the information at the top just so you can write in the answers – if you do this, you will not learn anything.**

As the year progresses, additional worksheets which review material in this packet will be added in between certain lessons.

It's my hope that you get a lot out of this packet. Let's get started.

Name: _____ Date: _____ Mod: _____

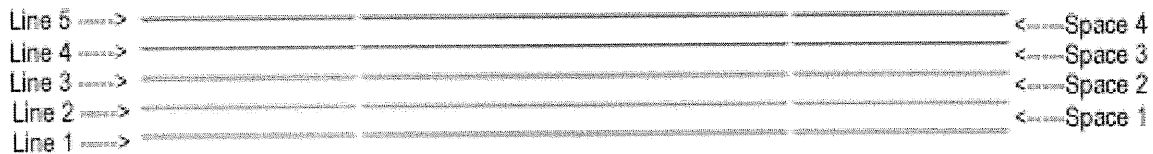
LESSON 1: THE STAFF

Music is written on a **staff**. A staff is made of **five lines** equally spaced.

This is a staff:



The distance between any two lines on the staff is called a **space**. There are **four spaces** on the staff. Lines and spaces on the staff are numbered:



In numbering the lines and spaces, always begin with the **lowest** line or space and **count upward**.

Student Assignment #1

1. Draw a staff using the dots below for guides. You can use the edge of a book to help.



2. A staff has _____ lines and _____ spaces.

3. The top line is line number _____.

4. The bottom line is line number _____.

5. The top space is space number _____.

6. The middle line is line number _____.

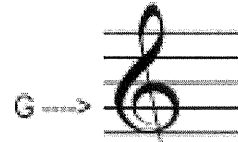
Memorize: A staff has five lines and four spaces. Lines and spaces are counted from the bottom upward.

LESSON 2A: THE TREBLE CLEF

At the beginning of every piece of music, you will find a clef sign that gives a letter name to each line and space on the staff.

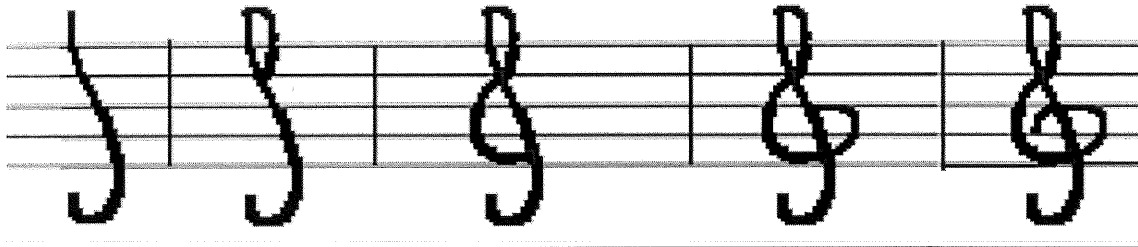
This is a **TREBLE CLEF** or **G-CLEF** sign. &

The treble clef gives the letter name **G** to the second line of the staff:



Notes written in the treble clef begin at the middle of the piano and go up to the highest notes on the piano. Use the following steps below to draw a treble clef:

1. Make a straight or semi-straight line with a 'curl' at the bottom.	2. Draw a small curved line at the top.	3. Draw another half-circle on the lower left side. Make sure that it doesn't come below the first line.	4. Draw a half-circle on the lower right side. Make sure it doesn't come above the third line.	5. Finish off the half circle so that it touches the second line.
---	---	--	--	---



Student Assignment #2

1. Draw six treble clefs. Be sure to correctly draw them to receive full credit.

2. The treble clef circles what staff line number? _____

3. Another name for the treble clef is the _____ clef.

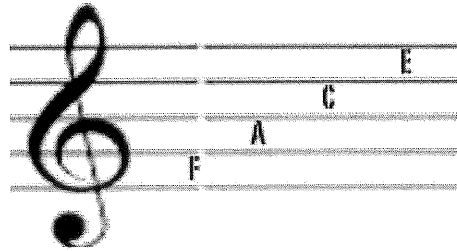
4. What is the letter name of line 2 in the treble clef? _____

Memorize: The treble or G clef names the second line of the staff G.

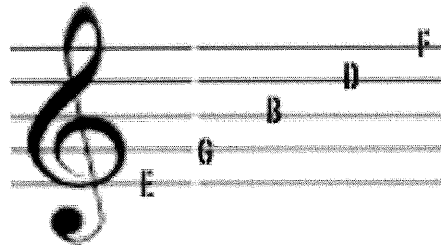
LESSON 3A: LINE & SPACE NAMES (🎵)

Each line and space on the staff has a letter name in relation to the clef sign. The first seven letters of the alphabet are used in naming the lines and spaces on the staff: A-B-C-D-E-F-G. After the note G, the letters repeat starting at A.

You can remember the names of the **spaces** in the treble clef using the word FACE. Use the phrase 'space rhymes with face' to remember this.



You can remember the names of the **lines** in the treble clef by using the phrase **Every Good Boy Does Fine**.



You can also create your own phrase (for example, Every Girl Buys Designer Fashions) as long as it uses the letters correctly for the lines and spaces.

Student Assignment #3a

1. How many letters of the alphabet are used in naming the lines and spaces ? _____
2. Write the letters of the lines in the treble clef in order. _____
3. The letter names of the spaces in the treble clef spell what word ? _____
4. Starting at line one, then space one, line two and upward, write the letter names of **all the lines and spaces** from line one to line five.

5. Which phrase will **you** use to help you remember the names of the LINES in the treble clef ? Write it out.

6. Which phrase will help you remember the names of the SPACES in the treble clef ? Write it out.

7. Create YOUR OWN phrase to remember the names of the lines AND spaces in the treble clef.

Memorize your phrases to remember the lines and spaces in the treble clef.

LESSON 4A: NOTATION:WHOLE NOTES (&)

Notes are the symbols written on the staff to represent music. Notes are written either **on a line** (with the line going through the center of the note) or **in a space** (with the note taking up the whole space from the line above to the line below).

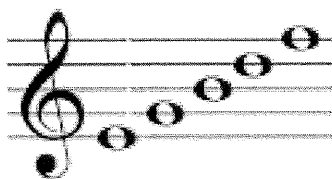
This is a whole note.  It can be written either on a line or in a space like this:



Whole note on a line.



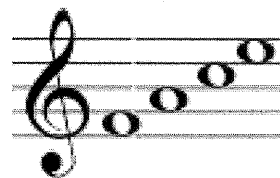
Whole note in a space.



E, G, B, D and F on the lines of the treble clef staff.

Notes written on a line should have the line go through the **center** of the note. The note should **not** be drawn so that it touches the **next line**.

Notes written in the spaces should take up space from the line above to the line below. They should **never** overlap onto a line.



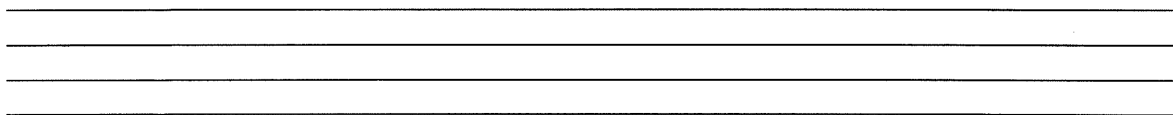
F, A, C and E in the spaces of the treble clef staff.

Student Assignment #4

1. Draw 8 whole notes on the line. _____

2. Draw 8 whole notes in the space. _____

3. Draw a treble clef. Use whole notes and draw the notes on the staff.



F B C D E A F G E

4. Write in the letter names under the notes.

