



**Asia-Pacific  
Economic Cooperation**

---

**2017/SOM3/SCSC/JRAC/006**

Agenda Item: 6a

**Mutual Recognition Arrangement on Conformity  
Assessment of Electrical and Electronic Equipment -  
APEC EEMRA Information Interchange Format Part  
1 - Hong Kong, China**

Purpose: Information  
Submitted by: Hong Kong, China



**22<sup>nd</sup> Joint Regulatory Advisory Committee on  
Electrical and Electronic Equipment Meeting  
Ho Chi Minh City, Viet Nam  
20 August 2017**

**MUTUAL RECOGNITION ARRANGEMENT ON CONFORMITY  
ASSESSMENT OF ELECTRICAL AND ELECTRONIC EQUIPMENT**

**APEC EEMRA  
Information Interchange Format**

**PART 1**

## Introduction

This format is being prepared to assist member economies participating in the APEC MRA to prepare documentation required for participation in a consistent format.

It is expected that each participating member economy would submit their information in the recommended format to the APEC Secretariat as required by the MRA.

The format is based on the Information Notes on Good Practice for Technical Regulation and therefore provides for information to be supplied for each of the regulatory regimes identified in the notes. There are 7 regimes, they are for products requiring inspection, products requiring licensing, products requiring batch testing, products requiring approval (or certification), products requiring listing or registration, supplier declarations and essential safety requirements. Participating member economies need only provide information relating to the regimes which are in force in their economy. The regimes that are not enforced by the economy need to be noted also, please indicate this by placing 'none' in the standards table on the front of each regime.

Where more than one regulatory system applies within a participating member economy information on each regulatory system should be provided separately.

The format also draws upon the survey on Conformity Assessment of Electrical and Electronic Equipment conducted by the APEC SCSC. The format includes reference to applicable international standards and uses the international convention for describing the relationship of national and international standards, i.e. IDT for identical, MOD for modified, and NEQ for not equal.

When information makes reference to documents or legislation, the documents or legislation should be available on a website for that economy or provided as part of the information supplied to the APEC Secretariat.

## ECONOMY – Hong Kong, China

### APEC EEMRA Information Interchange Format

#### Contact Points:

Contact 1. Hong Kong, China

Mr. K.C. CHAN

Chief Electrical & Mechanical Engineer

Officer-in-charge of the Electricity Legislation Division

Electricity Legislation Division

Electrical and Mechanical Services Department

The Government of the Hong Kong Special Administrative Region

3 Kai Shing Street,

Kowloon,

Hong Kong

(852) 2808 3649

(852) 2895 4929

chankc@emsd.gov.hk

<http://www.emsd.gov.hk>

## **PART I – INFORMATION EXCHANGE**

### **Regime Overview**

#### **Electrical Products**

The safety of electrical products designed for household use and supplied in Hong Kong, China is under the control of the Electrical Products (Safety) Regulation (EPSR), made under the Electricity Ordinance (EO), Cap. 406 of the Laws of Hong Kong. All electrical products within the scope of control of the EPSR shall comply with the applicable safety requirements and be issued with certificates of safety compliance, when they are supplied in Hong Kong.

In general, Hong Kong, China's mandatory requirements for electrical product safety are based on internationally accepted standards.

#### **Battery-powered Products**

The Consumer Goods Safety Ordinance (CGSO), Cap. 456 of the Laws of Hong Kong, imposes a duty on manufacturers, importers and suppliers of certain consumer goods, including the battery-powered equipment, to ensure that the consumer goods they supply are safe and for incidental purposes.

Note: For details of the above Ordinances and Regulations, please visit the internet address: <http://www.justice.gov.hk/home.htm>.

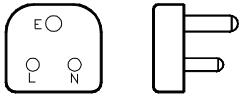
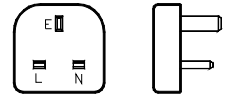
## Legislative References

<b>Legislation Applicable</b>	<b>Scope of the Legislation</b>	<b>Government Agency</b>
Electrical Products (Safety) Regulation of the Electricity Ordinance (Cap. 406), Laws of Hong Kong	The Electrical Products (Safety) Regulation provides statutory control over the safety of all household electrical products supplied in Hong Kong, with the objective to enhance public safety in use of these products.	Electrical and Mechanical Services Department
Consumer Goods Safety Ordinance (Cap. 456), Laws of Hong Kong	The Consumer Goods Safety Ordinance Cap. 456 applies to all consumer goods, including battery-powered equipment, that are ordinarily supplied in Hong Kong for private use or consumption (including those imported and those	Customs & Excise Department

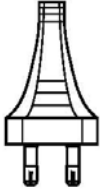

	manufactured locally), not being goods set out in Schedule to the CGSO, and includes the packaging in which the consumer goods are supplied.	
--	--	--

## Supply System and Mains Plug Configuration

This schedule provides information on the electricity supply arrangements and plug configurations that apply to household electrical and electronic equipment.

Supply System and Mains Plug Configuration						
Mains Voltage and Tolerance	Mains Frequency And Tolerance	Mains Plug Configuration				
		Domestic Standards	Tick if mandatory	Relevant International Standards	Extent of Alignment	Diagram of Mains Plug Configuration
220 volts single phase tolerance +/-6%	50 Hz +/- 2%	3-round-pin 5A/3-round-pin 15A plug: BS 546	√	N/A	-	 15A PLUG
		3-rectangular-pin 13A plug: BS 1363 Part 1	√			 13A FUSED PLUG



Supply System and Mains Plug Configuration						
Mains Voltage and Tolerance	Mains Frequency And Tolerance	Mains Plug Configuration				
		Domestic Standards	Tick if mandatory	Relevant International Standards	Extent of Alignment	Diagram of Mains Plug Configuration
		<p>2-pin reversible plugs which are designed for connecting to a shaver supply unit conforming to BS 3535 Part I: BS 4573, EN 50075</p> <p>IEC plug : IEC 60884-1 (special adaptor to be added to convert the plug for compliance with BS 5733, BS546 or</p>	<p>√</p> <p>√</p>			 

**Supply System and Mains Plug Configuration**

Mains Voltage and Tolerance	Mains Frequency And Tolerance	Mains Plug Configuration				
		Domestic Standards	Tick if mandatory	Relevant International Standards	Extent of Alignment	Diagram of Mains Plug Configuration
		BS 1363 Part 1)				
380 volts three phase tolerance +/-6%	50 Hz +/- 2%	No specific plug				

## **PRODUCTS REQUIRING INSPECTION**

An inspection regime involves the assessment of each individual product for compliance with technical standards or regulators.

*(For additional information refer to Part 6 'Inspection' of the APEC Information Notes on Good Practice for Technical Regulation)*

### **Products covered by inspection**

Product type or grouping	Regulations	Standards			
		Domestic Standards	Please tick box if mandatory	Relevant International Standards	Extent of Alignment
None					

**Diagrammatic representation or flowchart of the regime**

<Please outline the mechanism or steps undertaken by the relevant bodies in enabling a product to enter the market. This should include the import barrier controls, product approval and licensing (if any) mechanisms etc>

None

**Description of the regime**

<provide description of the regime>

None

## 2. PRODUCTS REQUIRING LICENSING

Licensing individuals or companies is a conformity assessment regime that assesses the competence of an individual or a company to undertake a specific task.

*(For additional information refer to Part 6 'Licensing' of the APEC Information Notes on Good Practice for Technical Regulation)*

### Products covered by licensing

Product type or grouping	Regulations	Standards			
		Domestic Standards	Please tick box if mandatory	Relevant International Standards	Extent of Alignment
None					

**Diagrammatic representation or flowchart of the regime**

<Please outline the mechanism or steps undertaken by the relevant bodies in enabling a product to enter the market. This should include the import barrier controls, product approval and licensing (if any) mechanisms etc>

None

**Description of the regime**

<provide a description of the regime>

None



### 3. **PRODUCTS REQUIRING BATCH TESTING**

A batch testing regime involves a sample test of each batch or shipment of mass produced product. A batch testing regime may also require initial type testing as a prerequisite.

*(For additional information refer to Part 6 'Batch testing' of the APEC Information Notes on Good Practice for Technical Regulation)*

#### **Products covered by batch testing**

Product type or grouping	Regulations	Standards			
		Domestic Standards	Please tick box if mandatory	Relevant International Standards	Extent of Alignment
None					

**Diagrammatic representation or flowchart of the regime**

<Please outline the mechanism or steps undertaken by the relevant bodies in enabling a product to enter the market. This should include the import barrier controls, product approval and licensing (if any) mechanisms etc>

None

## **Description of the Regime**

### **Testing Facilities**

<provide a list of recognised testing facilities and/or accreditation requirements for testing facilities>

None

### **Approval (Certification) Agencies**

<provide a list of recognised approval (certification) agencies and/or accreditation requirements for approval (certification) agencies>

None

### **Batch Testing Agencies**

<provide a list of recognised batch testing agencies and/or accreditation requirements for batch testing agencies>

None

### **Labelling Requirements**

<describe the labelling requirements of an approved product>

None

### **Regulatory and Legislation Requirements**

<describe any other regulatory and legislation requirements that need to meet in order to market electrical and electronic equipment including validity time>

None

#### 4. **PRODUCTS REQUIRING APPROVAL (OR CERTIFICATION)**

An approval regime requires the assessment (type testing) of a sample or samples for compliance with a standard or specification by a “Regulator” or assessment agency recognised by a regulator. In some economies approvals issued by other “Regulators” may be recognised.

Products cannot be sold, or imported, until an “certification” is issued for that product.

~~Products are generally required to be marked or labelled to indicate that they are covered by an approval.~~

*(For additional information refer to Part 6 ‘Approvals’ of the APEC Information Notes on Good Practice for Technical Regulation)*

## Products covered by certification

Product type or grouping	Regulations	Standards			
		Domestic Standards	Please tick box if mandatory	Relevant International Standards	Extent of Alignment
<p>Prescribed products (including plugs, adaptors, lampholders, flexible cords, extension units and unvented thermal storage type electric water heaters.)</p> <p><u>Prescribed Product</u></p> <p>1. <u>Plugs</u></p> <p>3-pin 5A plug</p> <p>3-pin 15A plug</p> <p>3-pin 13A plug</p> <p>2-pin reversible plugs which are designed for connecting to a shave supply unit conforming to BS3535 Part 1</p> <p>IEC plug (special adaptor to be added to convert the plug for compliance with BS 5733, BS 546 or BS 1363 Part 1)</p> <p>2. <u>Adaptors</u></p> <p>5A adaptor</p> <p>15A adaptor</p>	Electrical Products (Safety) Regulation	<p>Prescribed products shall comply with the applicable safety requirements (as stipulated in Part II of the Regulation) and be issued with the certificate of safety compliance.</p> <p>For a prescribed product, the following will be accepted as a certificate of safety compliance:-</p> <ul style="list-style-type: none"> <li>- a certificate or test report issued by a "recognized certification body"; or</li> <li>- a declaration of conformity issued by a "recognized</li> </ul>	√	<p><u>Standards</u></p> <p>BS 546</p> <p>BS 5733</p> <p>BS 1363 Part 1, BS 5733</p> <p>BS 4753, EN 50075</p> <p>IEC 60884-1</p> <p>BS 546</p> <p>BS 1363 Part 3</p>	



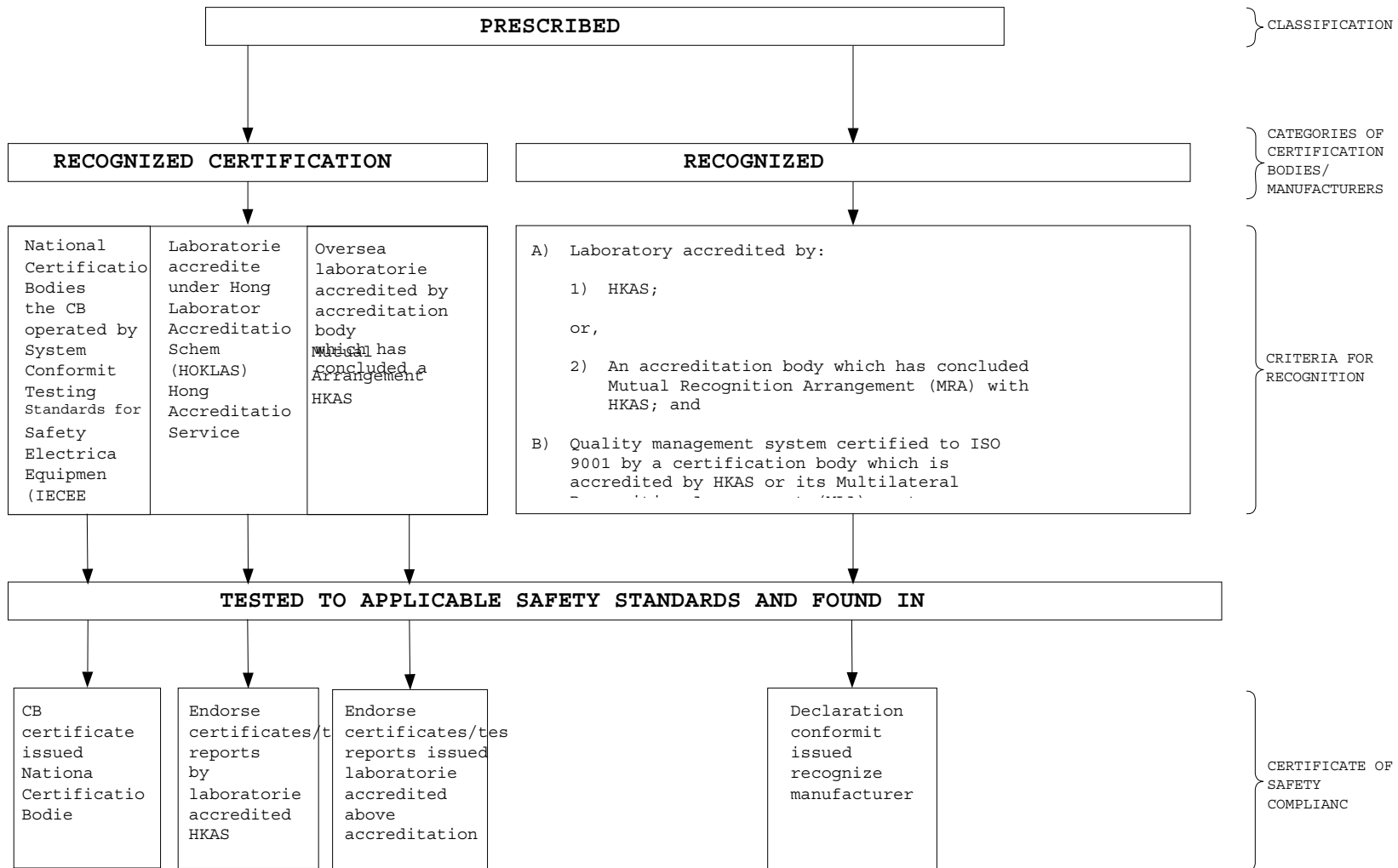
				<u>For thermal cut out</u> BS 3955 <u>For temperature and</u> <u>pressure relief valve</u> BS 6283	
--	--	--	--	--	--

**Diagrammatic representation or flowchart of the regime**

<Please outline the mechanism or steps undertaken by the relevant bodies in enabling a product to enter the market. This should include the import barrier controls, product approval and licensing (if any) mechanisms etc.>

Please refer to the following flowchart 1:-





**Flowchart 1- Means to obtain Certificate of Safety Compliance for Prescribed**

## **Description of the Regime**

### **Testing Facilities**

<provide a list of recognised testing facilities and/or accreditation requirements for testing facilities>

1. Recognized certification bodies are those certification bodies recognized by the Electrical and Mechanical Services Department (EMSD) of the Government of Hong Kong Special Administrative Region as qualified to issue certificates of safety compliance in respect of specified classes of electrical products. The list of recognized certification bodies can also be found at the Internet address:  
[http://www.emsd.gov.hk/emsd/eng/pps/electricity\\_reg\\_rc.shtml](http://www.emsd.gov.hk/emsd/eng/pps/electricity_reg_rc.shtml).
2. Recognized manufacturers are those manufacturers who are recognized by the Electrical and Mechanical Services Department (EMSD) of the Government of Hong Kong Special Administrative Region as qualified to issue certificates of safety compliance for the products manufactured by them. The list of recognized manufacturers can also be found at the Internet address:  
[http://www.emsd.gov.hk/emsd/eng/pps/electricity\\_reg\\_rm.shtml](http://www.emsd.gov.hk/emsd/eng/pps/electricity_reg_rm.shtml).
3. For the criteria for applying as a recognized certification body/ recognized manufacturer, please refer "Criteria for Recognition" as shown in flowchart 1 above or visit EMSD's homepage at  
[http://www.emsd.gov.hk/emsd/eng/pps/electricity\\_app.shtml](http://www.emsd.gov.hk/emsd/eng/pps/electricity_app.shtml).

**Approval (Certification) Agencies**

<provide a list of recognised approval (certification) agencies and/or accreditation requirements for approval (certification) agencies>

Same as those shown for the above Testing Facilities.

**Labelling Requirements**

<describe the labelling requirements of an approved product>

None

**Regulatory and Legislation Requirements**

<describe any other regulatory and legislation requirements that need to met in order to market electrical and electronic equipment including validity time>

None

**5. PRODUCTS REQUIRING LISTING OR REGISTRATION**

Listing/registration is similar to approvals except that there is no direct activity by the regulatory agency before a product is placed onto the market.

*(For additional information refer to Part 6 ‘Listing/registration’ of the APEC Information Notes on Good Practice for Technical Regulation)*

**Products covered by listing/registration**

Product type or grouping	Regulations	Standards			
		Domestic Standards	Please tick box if mandatory	Relevant International Standards	Extent of Alignment
None					

**Diagrammatic representation or flowchart of the regime**

<Please outline the mechanism or steps undertaken by the relevant bodies in enabling a product to enter the market. This should include the import barrier controls, product approval and licensing (if any) mechanisms etc.>

None

## **Description of the Regime**

### **Testing Facilities**

<provide a list of recognised testing facilities and/or accreditation requirements for testing facilities>

None

### **Approval (Certification) Agencies**

<provide a list of recognised approval (certification) agencies and/or accreditation requirements for approval (certification) agencies>

None

### **Labelling Requirements**

<describe the labelling requirements of an approved product>

None

### **Regulatory and Legislation Requirements**

<describe any other regulatory and legislation requirements that need to met in order to market electrical and electronic equipment including validity time>

None

## 6. SUPPLIER DECLARATIONS

A supplier declaration regime requires a supplier in that economy to formally take responsibility for the compliance of the product/products. It may require compliance with particular standards and will require the supplier to hold relevant compliance documents for subsequent audits. A supplier declaration regime may also include a marking regime.

### Products covered by supplier declarations

Product type or grouping	Regulations	Standards			
		Domestic Standards	Please tick box if mandatory	Relevant International Standards	Extent of Alignment
Non-prescribed products, i.e. household electrical products excluding plugs, adaptors, lampholders, flexible cords, extension units and unvented thermal storage type electric water heaters	Electric al Products (Safety) Regulati on	<p>Non-prescribed products shall comply with the applicable safety requirements (as stipulated in Part II of the Regulation) and be issued with the certificate of safety compliance.</p> <p>For a non-prescribed product, the following will be accepted as a certificate of safety compliance:-</p> <p>a. a declaration of conformity issued by the product manufacturer (substantiated with certificate or test report from an accredited laboratory); or</p> <p>b. a declaration of conformity issued by a "recognized</p>	√	Latest version of IEC standards or other compatible international/national standards	IDT

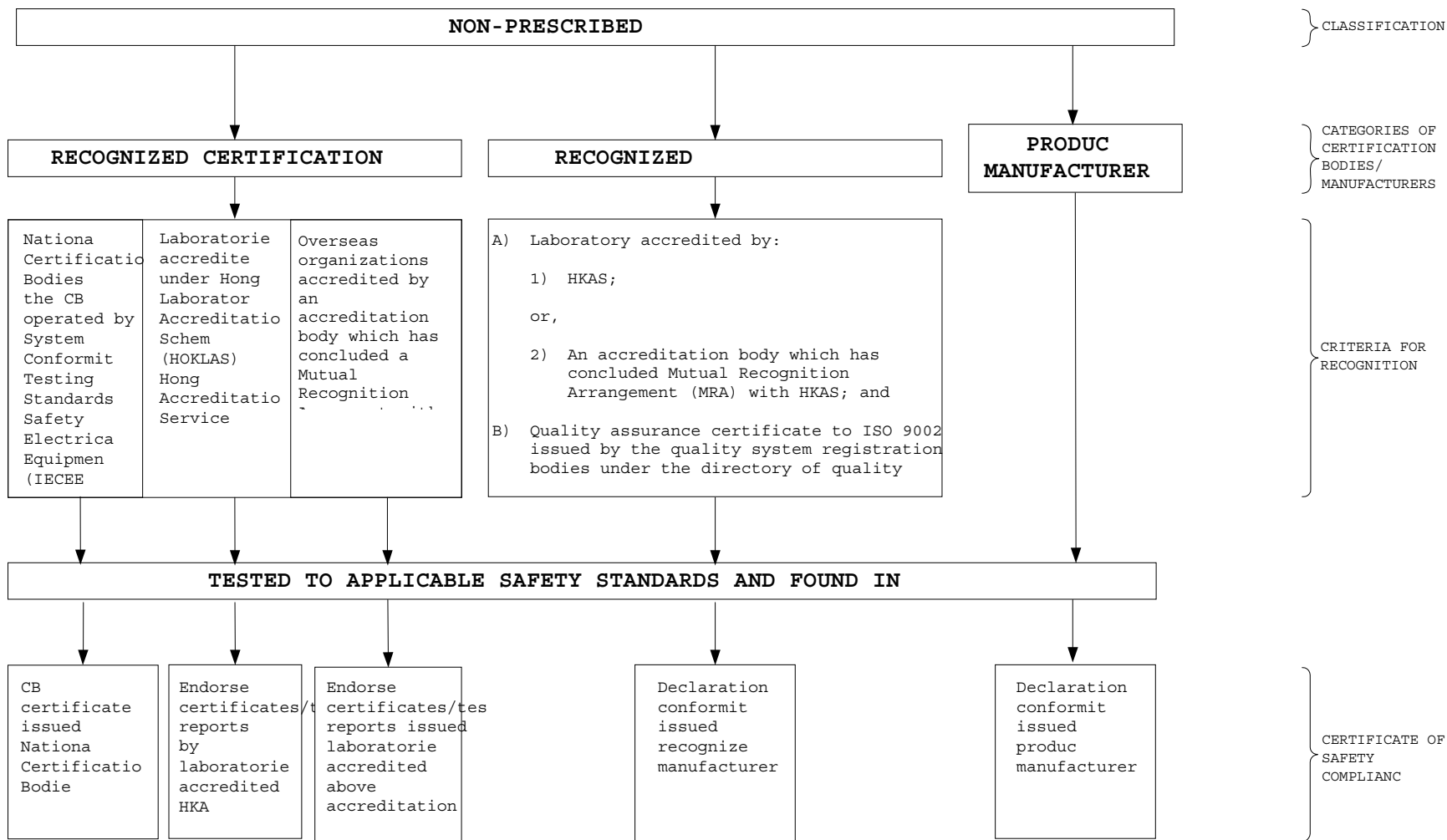
		manufacturer"; or c. a certificate or test report issued by a "recognized certification body".			
--	--	---	--	--	--



**Diagrammatic representation or flowchart of the regime**

<Please outline the mechanism or steps undertaken by the relevant bodies in enabling a product to enter the market. This should include the import barrier controls, product approval and licensing (if any) mechanisms etc.>

Please refer to the following flowchart 2:-



**Flowchart 2- Means to obtain Certificate of Safety Compliance for Non-Prescribed**

## **Description of the Regime**

### **Testing Facilities**

<provide a list of recognised testing facilities and/or accreditation requirements for testing facilities>

1. Recognized certification bodies are those certification bodies recognized by the Electrical and Mechanical Services Department (EMSD) of the Government of Hong Kong Special Administrative Region as qualified to issue certificates of safety compliance in respect of specified classes of electrical products. The list of recognized certification bodies can also be found at the Internet address: [http://www.emsd.gov.hk/emsd/eng/pps/electricity\\_reg\\_rc.shtml](http://www.emsd.gov.hk/emsd/eng/pps/electricity_reg_rc.shtml).
2. Recognized manufacturers are those manufacturers who are recognized by the Electrical and Mechanical Services Department (EMSD) of the Government of Hong Kong Special Administrative Region as qualified to issue certificates of safety compliance for the products manufactured by them. The list of recognized manufacturers can also be found at the Internet address: [http://www.emsd.gov.hk/emsd/eng/pps/electricity\\_reg\\_rm.shtml](http://www.emsd.gov.hk/emsd/eng/pps/electricity_reg_rm.shtml).
3. For non-prescribed products, the declaration of conformity issued by the product manufacturers and substantiated with the relevant test reports or certificates which are issued by an accredited testing laboratories can also be accepted as a certificate of safety compliance.

4. For the criteria for applying as a recognized certification body/ recognized manufacturer, please refer "Criteria for Recognition" as shown in flowchart 2 above or visit EMSD's homepage at [http://www.emsd.gov.hk/emsd/eng/pps/electricity\\_app.shtml](http://www.emsd.gov.hk/emsd/eng/pps/electricity_app.shtml).

**Approval (Certification) Agencies**

<provide a list of recognized approval (certification) agencies and/or accreditation requirements for approval (certification) agencies>

Same as those shown for the above Testing Facilities.

**Labelling Requirements**

<describe the labelling requirements of an approved product>

None

**Regulatory and Legislation Requirements**

<describe any other regulatory and legislation requirements that need to met in order to market electrical and electronic equipment including validity time>

None

## 7. ESSENTIAL SAFETY REQUIREMENTS

An essential safety regime requires that products comply with recognised fundamental safety requirements (essential safety). The regime may include standards which are recognised to achieve the essential safety requirements.

### Products covered by essential safety requirements

Product type or grouping	Regulations	Standards			Extent of Alignment
		Domestic Standards	Please tick box if mandatory	Relevant International Standards	
(a) Electrical products designed for household use and supplied in Hong Kong	Electrical Products (Safety) Regulation	<p>The Regulation requires that all household electrical products shall comply with the applicable safety requirements, which include the "essential safety requirements" (as stipulated in Schedule 1 of the Regulation) to protect users from hazards arising from the electrical products and hazards which may be caused by external influences on the electrical products.</p> <p>Under the Regulation, certain types of household electrical products which are of special nature and more liable to cause hazards are classified as "prescribed products". These types of products shall comply with the "specific safety requirements" (as stipulated in</p>	√	Latest version of IEC standards or other compatible international/national standards. In general, the essential safety requirements are stipulated to ensure that all electrical products are safe to use. The electrical products shall	IDT

		<p>Schedule 2 of the Regulation) in addition to the "essential safety requirements". Prescribed products include plugs, adaptors, lampholders, flexible cords, extension units and unvented thermal storage type electric water heaters. Household electrical products other than these 6 types of prescribed products are considered to be "non-prescribed products".</p> <p>For some particular types of electrical products, certain additional safety requirements are stipulated in the Regulation (as stipulated in Section 6 of the Regulation).</p> <p>The requirements are summarized as shown in flowchart 3.</p>		<p>be designed and constructed in accordance with good engineering practice to protect their users against possible hazards that may arise.</p>	
--	--	---	--	---	--

(b) Battery-powered equipment	Consumer Goods Safety Ordinance, Cap. 456, Laws of Hong Kong	<p>Comply with the general safety requirement</p> <p>The general safety requirement for consumer goods is that the consumer goods are reasonably safe having regard to all of the circumstances, including -</p> <p>(a) the manner in which, and the purpose for which, the consumer goods are presented, promoted or marketed;</p> <p>(b) the use of any mark in relation to the consumer goods and instructions or warnings given for the keeping, use or consumption of the consumer goods;</p> <p>(c) reasonable safety standards published by a standards institute or similar body for consumer goods of the description which applies to the consumer goods or for matters relating to consumer goods of that description; and</p> <p>(d) the existence of any reasonable means (taking into account the cost, likelihood and extent of any improvement) to make the consumer goods safer</p>	√	reasonable safety standards published by a standards Institute or similar body applicable for that product	
-------------------------------	--	--	---	--	--

### **Diagrammatic representation or flowchart of the regime**

<Please outline the mechanism or steps undertaken by the relevant bodies in enabling a product to enter the market. This should include the import barrier controls, product approval and licensing (if any) mechanisms etc.>

#### **(a) Electrical Products**

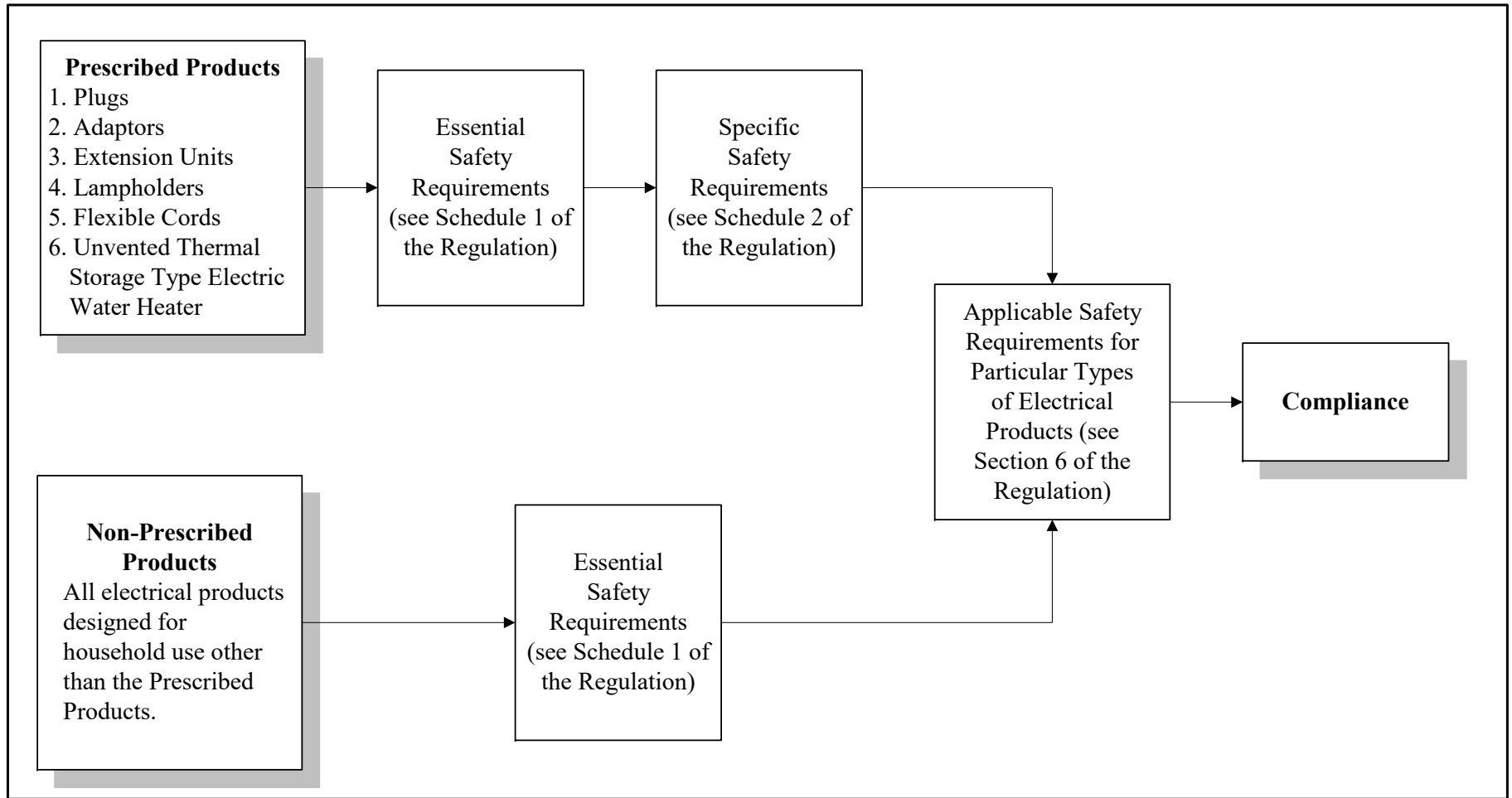
Please refer to the previous flowcharts 1 & 2.

#### **(b) Battery-powered Equipment**

A person shall not supply, manufacture or import into Hong Kong consumer goods, including battery-powered equipment, unless the consumer goods comply with the general safety requirement for consumer goods.







Flowchart 3 - Safety Requirements

## **Description of the Regime**

### **Testing Facilities**

<provide a list of recognised testing facilities and/or accreditation requirements for testing facilities>

#### **(a) Electrical Products**

1. Recognized certification bodies are those certification bodies recognized by the Electrical and Mechanical Services Department (EMSD) of the Government of Hong Kong Special Administrative Region as qualified to issue certificates of safety compliance in respect of specified classes of electrical products. The list of recognized certification bodies can also be found at the Internet address: [http://www.emsd.gov.hk/emsd/eng/pps/electricity\\_reg\\_rc.shtml](http://www.emsd.gov.hk/emsd/eng/pps/electricity_reg_rc.shtml).
2. Recognized manufacturers are those manufacturers who are recognized by the Electrical and Mechanical Services Department (EMSD) of the Government of Hong Kong Special Administrative Region as qualified to issue certificates of safety compliance for the products manufactured by them. The list of recognized manufacturers can also be found at the Internet address: [http://www.emsd.gov.hk/emsd/eng/pps/electricity\\_reg\\_rm.shtml](http://www.emsd.gov.hk/emsd/eng/pps/electricity_reg_rm.shtml).
3. For non-prescribed products, the declaration of conformity issued by the product manufacturers and substantiated with the relevant test reports or certificates which are issued by an accredited testing laboratories can also be accepted as a certificate of safety compliance.

4. For the criteria for applying as a recognized certification body/ recognized manufacturer, please refer "Criteria for Recognition" as shown in flowchart 2 above or visit EMSD's homepage at [http://www.emsd.gov.hk/emsd/eng/pps/electricity\\_app.shtml](http://www.emsd.gov.hk/emsd/eng/pps/electricity_app.shtml).

**(b) Battery-powered Equipment**

Traders may have their consumer goods tested by an approved laboratory to determine whether the goods comply with reasonable safety standards. Approved laboratories are those laboratories approved in writing by the Commissioner for Innovation and Technology. They include those accredited under the Hong Kong Laboratory Accreditation Scheme (HOKLAS) and those accredited under the schemes with which HOKLAS has concluded Mutual Recognition Arrangement (MRA).

### **Approval (Certification) Agencies**

<provide a list of recognized approval (certification) agencies and/or accreditation requirements for approval (certification) agencies>

Same as those shown for the above Testing Facilities.

### **Labelling Requirements**

<describe the labelling requirements of an approved product>

#### **(a) Electrical Products**

None

#### **(b) Battery-powered Equipment**

In general, there is no labelling requirement for consumer goods. Yet, if warning or caution with respect to the safe keeping, use, consumption or disposal of the goods is required, such warning or caution shall be in both the English and the Chinese languages.

### **Regulatory and Legislation Requirements**

<describe any other regulatory and legislation requirements that need to met in order to market electrical and electronic equipment including validity time>

None