

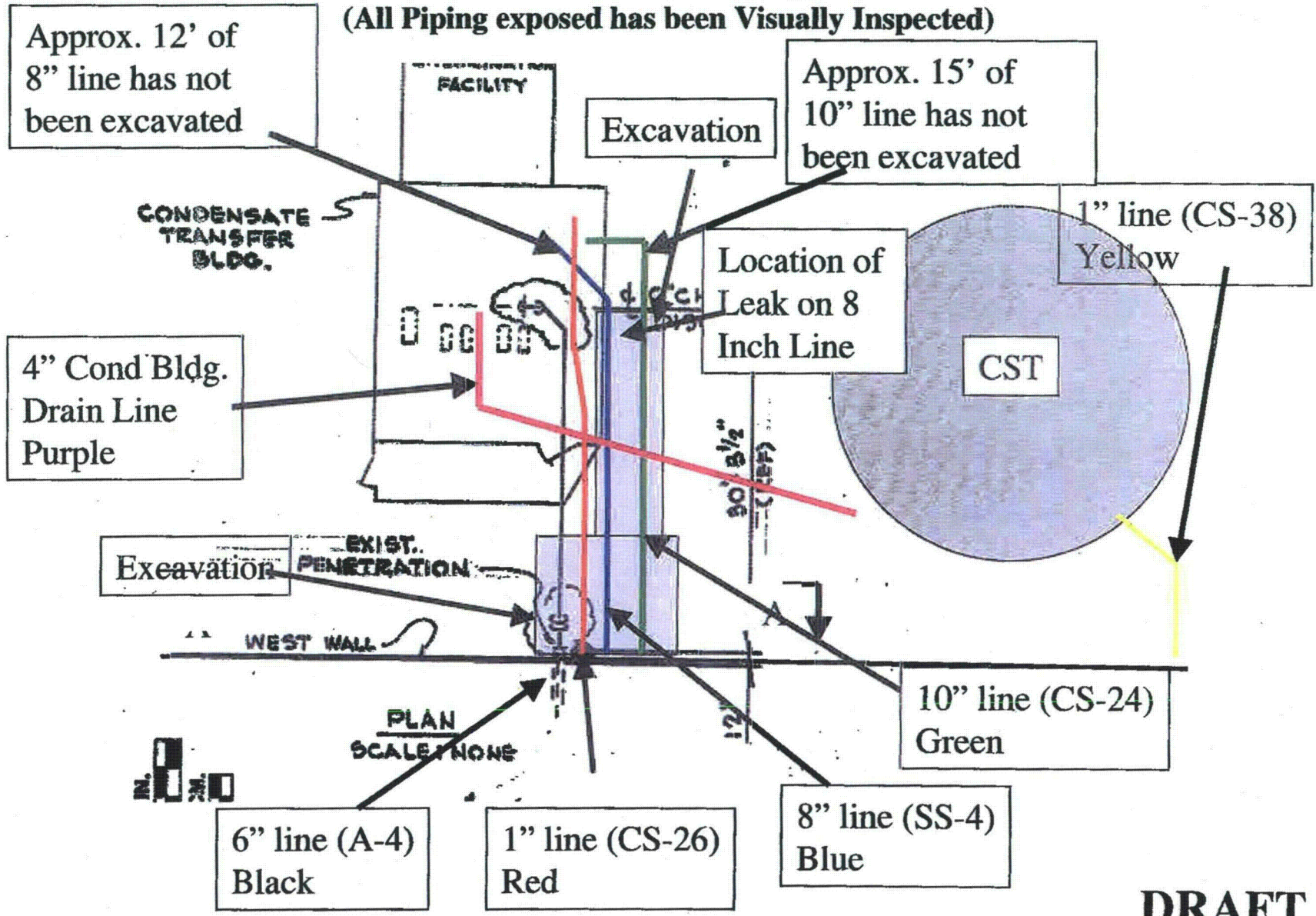
F-81

INFORMATION ONLY
FOR DISCUSSION PURPOSES

N →

General Sketch Showing Excavation 4/29

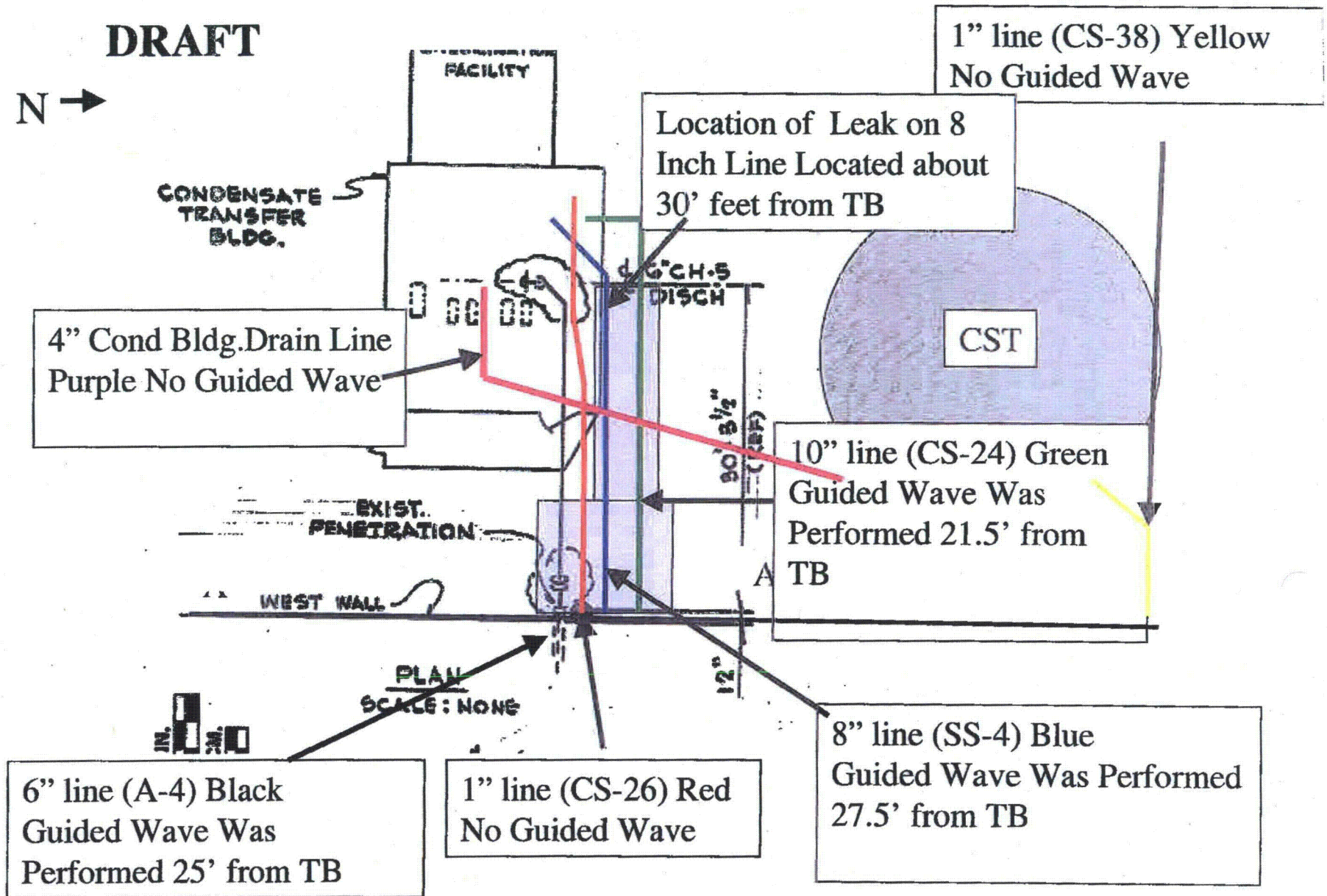
(All Piping exposed has been Visually Inspected)



DRAFT

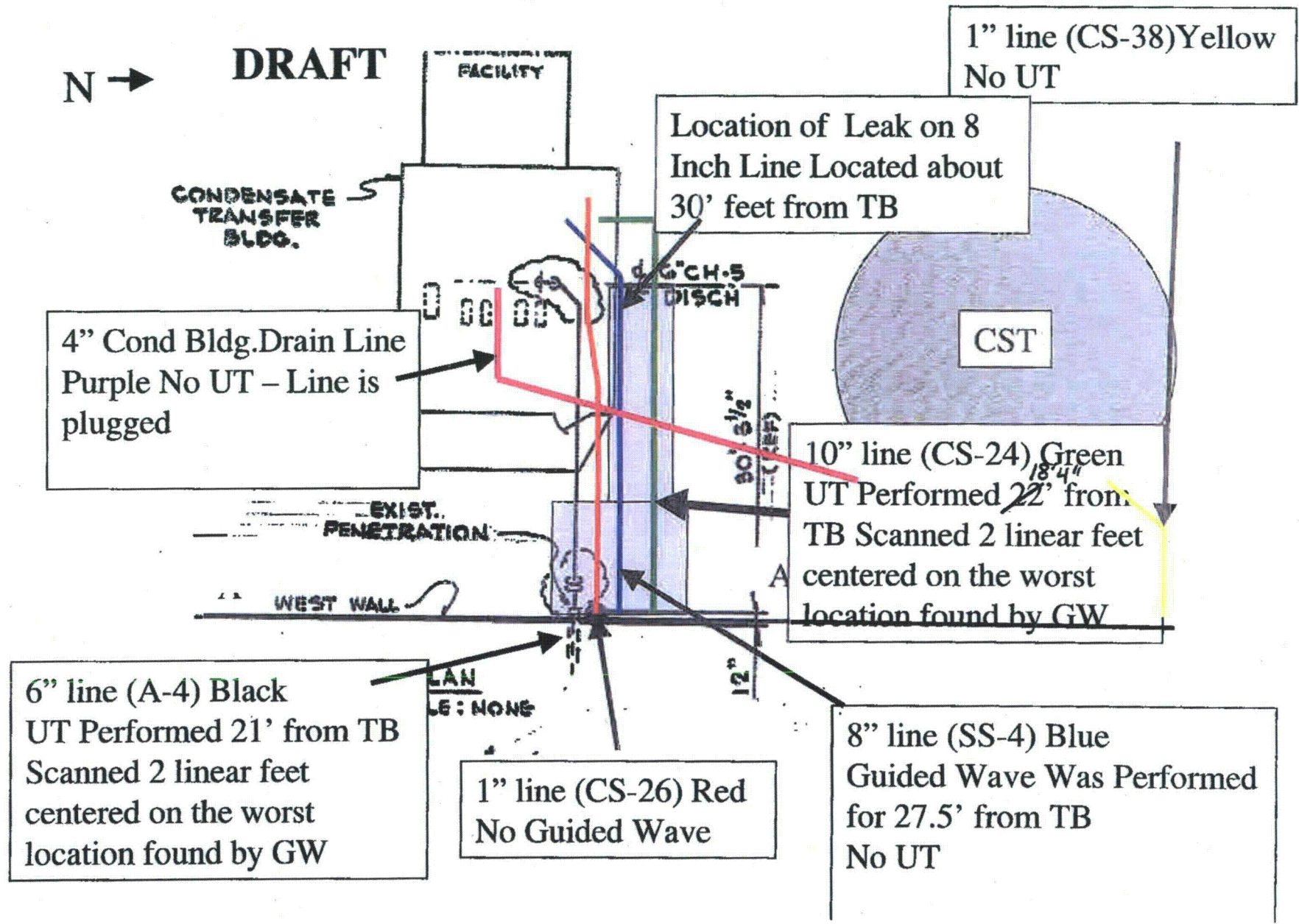
General Sketch Showing Guided Wave Perform 4/21/09

DRAFT

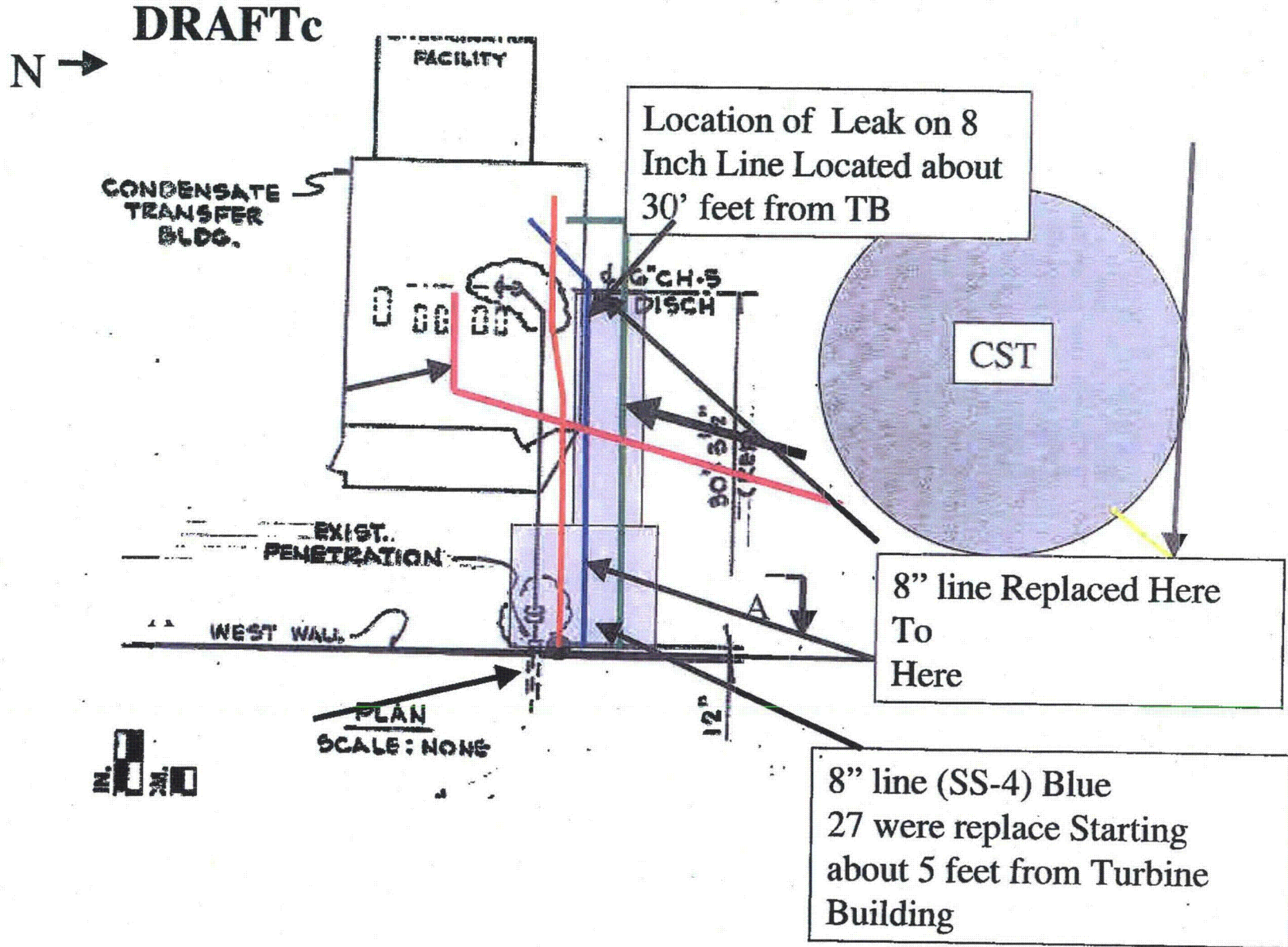


INFORMATION ONLY
FOR DISCUSSION PURPOSES

General Sketch UT Inspections Perform on 4/29/09



General Sketch Showing Replaced Pipe Up to 4/29/09



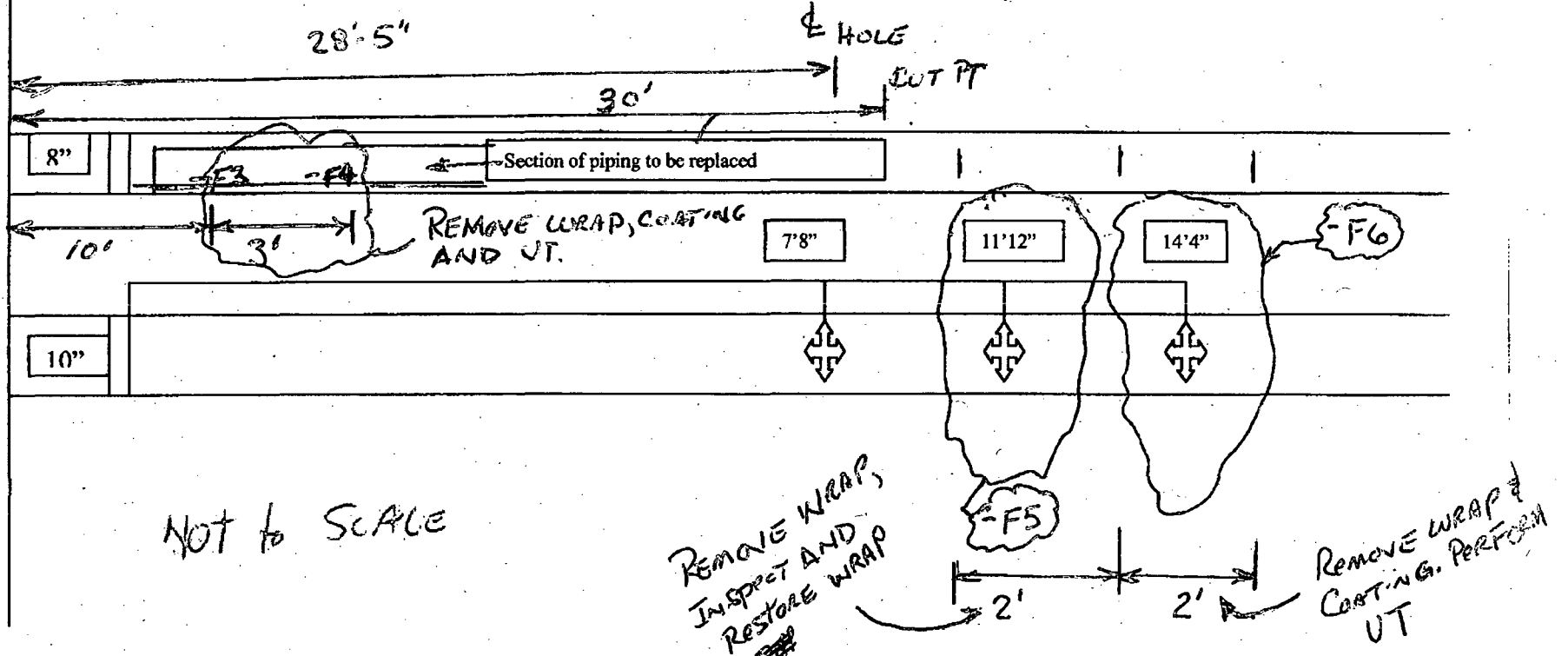
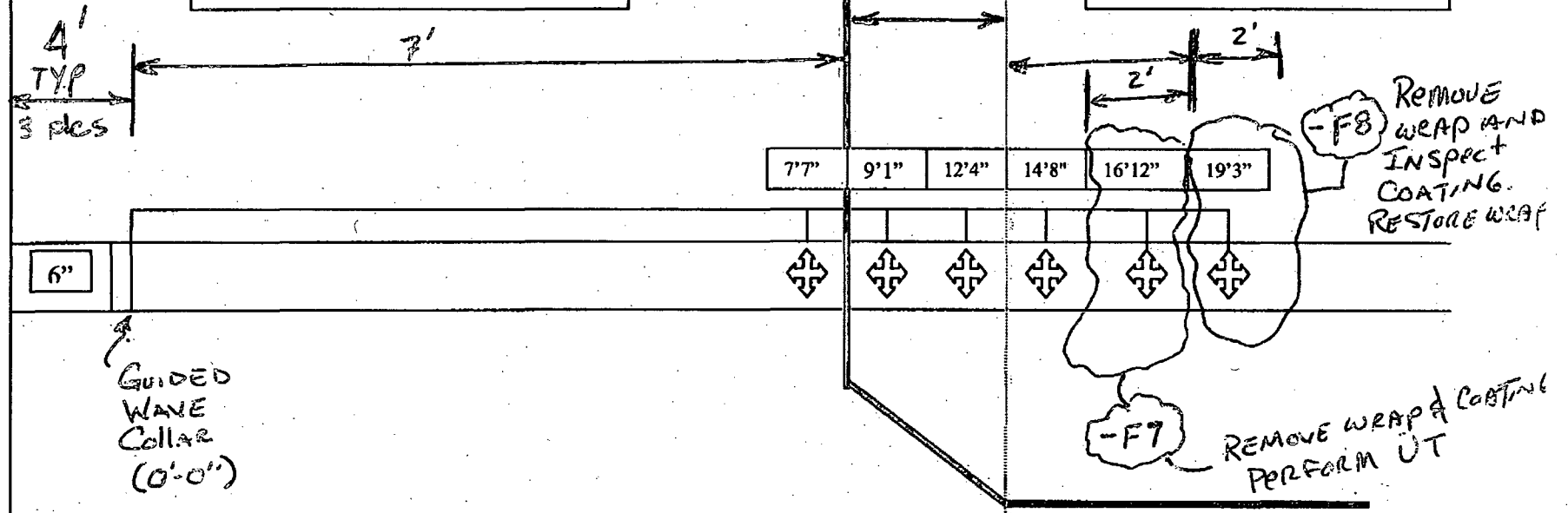
EXTERNAL TB WALL

The distances in this diagram are from the collar used for Guide Wave Testing of these piping to the locations that showed degradation (wall thinning).

Interior Pump structure Wall

NO FURTHER DISCUSSION PURPOSES

Condensate Transfer House



NOT TO SCALE

5

INFORMATION ONLY
FOR DISCUSSION PURPOSES



Structural Integrity Associates, Inc.

Pipe: 6" CH-5	Ring: R2F06(268)
Site: Oyster Creek Unit 1	Config: 0.6FR, T(0,1)
Location: Elbow +8"	Calibration: Automatic (2491.06 mV)
Size: 6 inch (7.125mm)	Version: 3.95, Wavemaker G3-14

Feature	Location	Size (mV)	ECL	Extent	Class	Notes
+F1	0'7"	0.189	-	60	Bitumen	
+F2	0'8"	0.123	-	45	45 deg Bend	
+F3	2'3"	2.2	-	30	45 deg Bend	
+F4	4'3"	0.996	-	15	Earth	
+F5	4'5"	0.945	-	12	Sleeve	
+F6	5'5"	0.664	-	4	Wall	
+F7	8'7"	0.48	-		End	
-F1	-0'8"	0.45	-	70	Bitumen	
-F2	-1'6"	1.31	-	0	Earth	
-F3	-7'7"	0.397	5	30	Minor	40% circumference affected approximately 12% wall loss Probable coating failure or change in coating thickness
-F4	-9'1"	0.252	-	60	Other	Probable coating failure or change in coating thickness
-F5	-12'4"	0.15	7	0	Medium	25% circumference affected approximately 28% wall loss
-F6	-14'8"	0.0697	7	0	Medium	25% circumference affected approximately 28% wall loss
-F7	-16'12"	0.0656	7	0	Medium	20% circumference affected approximately 35% wall loss
-F8	-19'3"	0.0456	7	0	Medium	25% circumference affected approximately 28% wall loss
-F9	-20'6"	0.0731	-	50	45 deg Bend	
-F10	-21'2"	0.0428	-		End	

UT

-F7

-F8

COATING
INSPECTION



Structural Integrity Associates, Inc.

Information only
for Discussion purposes

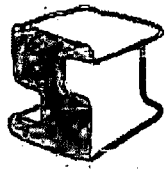
Pipe: 10"-CS-24	Ring: R2B10(557)
Site: Oyster Creek Unit 1	Config: 7.0FR, T(0,1)
Location: Weld +10"	Calibration: Automatic (230.927 mV)
Size: 10 inch (12.45mm)	Version: 3.95, Wavemaker G3-14

Feature	Location	Size (mV)	ECL	Extent	Class	Notes
+F1	0'12"	0.00702	-	0	Bitumen	
+F2	1'4"	0.0156	-	0	45 deg Bend	
+F3	2'5"	0.0918	-	60	45 deg Bend	
+F4	4'0"	0.0442	-	35	Sleeve	
+F5	4'6"	0.0444	-	25	Wall	
-F1	-0'10"	0.0993	-	17	Bitumen	
-F2	-2'0"	0.123	-	0	Earth	
-F3	-4'8"	0.236	-	60	False Echo	
-F4	-7'8"	0.0366	-	50	Other	Probable coating failure or change in coating thickness
-F5	-11'12"	0.0383	8	30	Medium	30% circumference affected approximately 27% wall loss
-F6	-14'4"	0.0265	7	0	Medium	25% circumference affected approximately 28% wall loss
-F7	-17'4"	0.0246	-	60	Bend	

COATING INSPECTION

UT





Structural Integrity Associates, Inc.

INFORMATION ONLY
FOR DISCUSSION PURPOSES

Pipe: 8" SS-4	Ring: R2F08(283)
Site: Oyster Creek Unit 1	Config: 3.6FR, T(0,1)
Location: Weld +10"	Calibration: Automatic (243.481 mV)
Size: 8 inch (10.425mm)	Version: 3.95, Wavemaker G3-14

Feature	Location	Size (mV)	ECL	Extent	Class	Notes
+F7	21'7"	0.0288	-		End	
+F6	21'7"	0.0291	-	50	Weld	
+F5	5'6"	0.281	-	7	Wall	
+F4	5'3"	0.336	-	45	Sleeve	
+F3	4'2"	0.46	-	40	45 deg Bend	
+F2	1'0"	0.0751	-	50	45 deg Bend	
+F1	0'10"	0.0468	-	45	Weld	
-F1	-0'8"	0.0129	-	0	Bitumen	
-F2	-2'4"	0.534	-	0	Earth	
-F3	-6'1"	0.173	13	0	Severe	15% Circ. Affected estimated 86% Wall Loss
-F4	-8'4"	0.0922	14	30	Severe	15% Circ. Affected estimated 93% Wall Loss
-F5	-10'0"	0.153	-	40	Wall	
-F6	-14'7"	0.0476	15	0	Medium	40% Circ. Affected estimated 38% Wall Loss
-F7	-20'9"	0.0237	-	25	45 deg Bend	
-F8	-23'5"	0.00958	-		End	

REPLACE WITH NEW PIPE