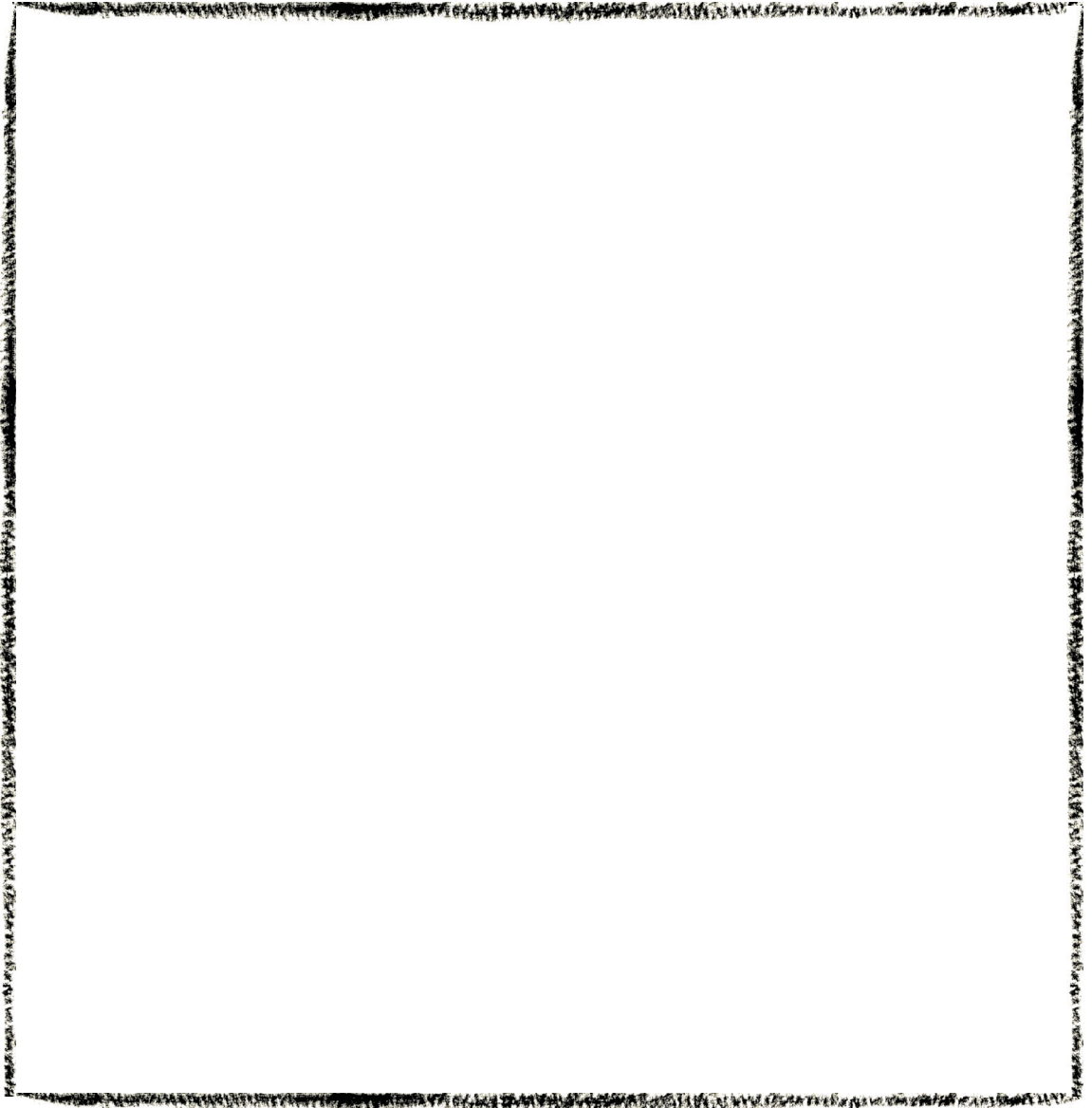


What's Your Favorite Animal?

My favorite animal is _____

You might like to draw a picture of your favorite animal in the box below.



You might enjoy writing a poem about Your Favorite Animal.



Cats like to curl up with me when I read books.

Adorable.

Too cute for words.

Every April, we celebrate National Poetry Month. Just like animals, there are lots of different types of poems. One type is an acrostic poem. Try writing an acrostic about your favorite animal. To start your poem, put the letters that spell out its name in the space below.

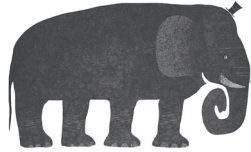
Then go back to each letter and think of a word, phrase, or sentence starting with that letter. To the left is an example using Eric Carle's favorite animal, CAT. Remember that this type of poetry doesn't need to rhyme. Be creative and share your poem!

Where does Your Favorite Animal live?

When Erin Stead wants to see her favorite animal, a penguin, she visits the penguinarium at the zoo. Most penguins live in Antarctica and spend half their time on land and the other half underwater.

Can you draw a picture of your favorite animal and its home? Think about what might be nearby (water, mountains, trees, flowers) and what other animals might be there, too.





Is Your Favorite Animal funny?

Lane Smith made a joke about his favorite animal, the elephant. Now it's your turn to be funny! You can write a knock-knock joke about your favorite animal, write a funny story, ask a funny question and give a funny answer, draw a silly scene, or anything else you can think of. Be creative!

Here's an example using an elephant:

Q. What is the same size as an elephant, yet weighs nothing?
A. An elephant's shadow!

What does Your Favorite Animal like to eat?

Peter McCarty's favorite animal is a bunny. His very favorite, Mr. Hopper, likes to eat his food out of a ceramic bowl. What kind of food does your favorite animal like to eat?

Can you draw the food your favorite animal eats?



What else does your favorite animal eat? Circle the food(s) your favorite animal eats:

carrots peas lettuce grass eggs spiders other stuff
string beans bees flowers fish pet food

What's Your Favorite Animal?

Word Search

Can you find these animals in the jumble of letters below?

Dog

Horse

Bunny

Penguin

Giraffe

Cow

Elephant

Cat

Snake

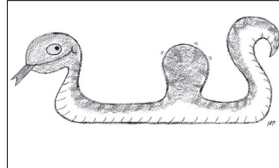
Snail

O	M	C	Z	B	Q	W	E	C	N	N	H
X	S	B	S	G	Y	F	T	Y	B	I	Z
C	O	W	U	Y	F	X	M	H	L	U	E
G	P	Y	C	A	Q	O	Z	J	O	G	C
T	S	C	R	L	N	I	W	T	M	N	A
U	P	I	F	Y	I	A	N	A	V	E	M
H	G	T	S	G	N	A	B	C	E	P	R
A	P	H	A	V	H	N	U	T	N	Z	U
S	R	O	F	P	N	B	U	L	M	W	S
N	Y	Z	E	K	E	G	Z	B	R	F	N
A	M	L	J	E	P	D	X	Q	C	Y	A
I	E	M	J	R	H	O	R	S	E	O	K
L	G	Q	A	C	I	G	V	H	B	I	E

What's Your Favorite Animal?

Matching Game

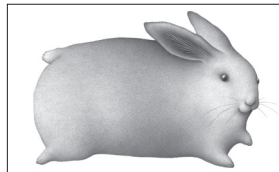
PENGUINS



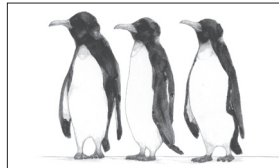
CAT



DOG



SNAKE



BUNNY



HORSES

