

# 2017 Yaris

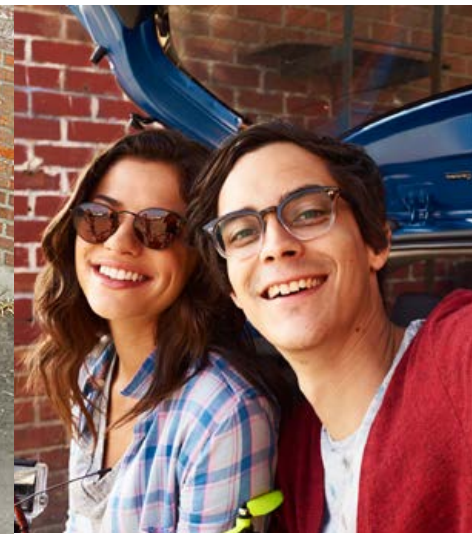


 **TOYOTA** | *Let's  
Go  
Places*

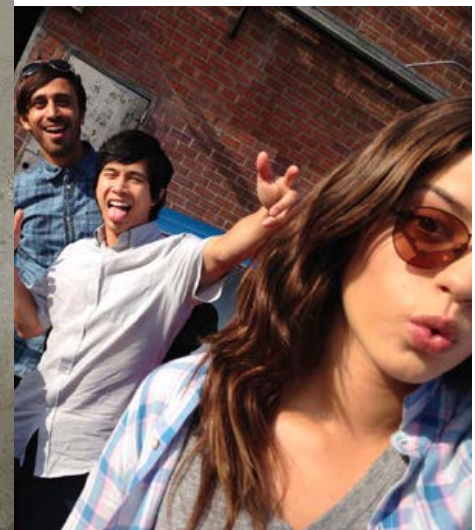
**DEP**  
DEALER ePROCESS

# It doesn't get cooler than this.

The 2017 Toyota Yaris proves that great things come in small packages. Style comes standard, as does the advanced Toyota Safety Sense™ C (TSS-C)<sup>12</sup> feature with Pre-Collision System (PCS);<sup>13</sup> Lane Departure Alert (LDA)<sup>14</sup> and Automatic High Beams (AHB).<sup>15</sup> Also standard is the powerful Yaris Entune™ Audio with touch-screen and wireless Bluetooth®<sup>16</sup> technology — giving you easy access to your music and friends. An available two-tone<sup>23</sup> exterior and available alloy wheels crank up the cool factor, while the available remote keyless entry gives you easy access to it all. Best of all, up to an EPA-estimated 36 highway mpg<sup>2</sup> makes Yaris ready for your next road trip. So buckle up — it's time to discover your next favorite thing. Let's go places.



—  
“Let's look at the world from a brand-new angle. Load up your Yaris, grab some friends, sync the cameras, and away we go.”  
—



5-Door SE shown in Barcelona Red Metallic and 5-Door LE shown in Blue Streak Metallic. Prototypes shown. Production models will vary.  
See numbered footnotes in Disclosures section.

DEALER PROCESS

PERFORMANCE AND STYLE

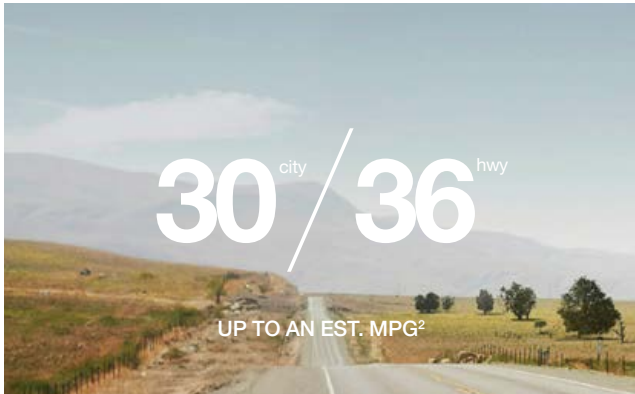


5-Door SE shown in Barcelona Red Metallic. Prototype shown. Production model will vary.



# Turn heads and corners every chance you get.

Yaris has always been about letting you be more independent. It's fun to drive, too. Sport-tuned front suspension on the SE and spirited handling make every ride a great one. Available 16-in. alloy wheels look sleeker than ever, while the grille adds extra attitude. Love night drives? Available projector-beam headlights brighten the evening, and available LED Daytime Running Lights (DRL) help you have a distinct look even during the day. Yaris balances fun and fuel by offering great mpg, so you'll have a smile on your face as you drive past the gas station.



## LESS GAS, MORE FUN

All this fun should come at a price, right? Not with Yaris, which has up to an EPA-estimated 36 highway and 30 city mpg.<sup>2</sup> Now you can focus on finding your next meet up and not a gas station.



## SMOOTH OPERATOR

Standard independent MacPherson strut front suspension, a wide wheelbase and a minimum turning radius combine to make Yaris not only fun to drive, but versatile, as well. It's like a whole new drive.



## SEE BETTER, DAY AND NIGHT

Available projector-beam headlights with black sport trim shine brightly at night, while available LED Daytime Running Lights (DRL) create an iconic look. No matter the time of day, Yaris is instantly recognizable.

PERFORMANCE AND STYLE



Yaris 5-Door SE shown in Blue Streak Metallic and Yaris iA shown in Graphite. Prototypes shown. Production models will vary.



# Turn up the volume and the technology.

Everything has a purpose — that's the idea behind the features of Yaris. The interior is filled with tech you'd actually use, like available remote keyless entry, standard Yaris Entune™ Audio and hands-free phone capability with music streaming<sup>8</sup> via *Bluetooth*<sup>®9</sup> wireless technology. A 6.1-in. touch-screen audio system with USB port<sup>6</sup> and voice recognition makes it easier to find the perfect soundtrack for that drive. Yaris is full of technology that you will appreciate, and that should be music to your ears. So go ahead, start warming up for karaoke right now.



## LEATHER-TRIMMED STEERING WHEEL

A sporty look is the Yaris standard. That's why Yaris SE comes standard with a leather-trimmed steering wheel with integrated audio controls. It's the little details that add to the fun.



## AVAILABLE REMOTE KEYLESS ENTRY

Tech that comes in handy. With just the simple press of a button on the key, you can easily get in and out of Yaris.



## YARIS ENTUNE™ AUDIO WITH AVAILABLE NAVIGATION<sup>24</sup>

Yaris offers a 6.1-in. touch-screen with available navigation,<sup>24</sup> USB port<sup>6</sup> with iPod<sup>®7</sup> connectivity and control, HD Radio™ Technology<sup>4</sup> with iTunes® Tagging<sup>5</sup>, voice recognition and music streaming<sup>8</sup> via *Bluetooth*<sup>®9</sup> wireless technology.



# A focus on safety that's easy to see.

Yaris comes with lots of standard safety features. Along with an impressive nine airbags,<sup>19</sup> every Yaris Hatchback comes standard with the Star Safety System,<sup>™</sup> a suite of six active safety features that helps keep you out of harm's way. This advanced system includes Vehicle Stability Control (VSC),<sup>16</sup> Traction Control (TRAC), Anti-lock Brake System (ABS), Electronic Brake-force Distribution (EBD), Brake Assist (BA)<sup>17</sup> and Smart Stop Technology<sup>®</sup> (SST).<sup>18</sup>



## AIRBAGS<sup>19</sup>

Yaris has nine airbags,<sup>19</sup> which include a driver and front passenger Advanced Airbag System, driver and front passenger seat-mounted side airbags, a driver knee airbag, driver and front passenger seat-cushion airbags, and front and rear side curtain airbags.



## LATCH

LATCH (Lower Anchors and Tethers for CHildren) provides an added measure of safety for the smaller members of your family. LATCH includes lower anchors on the outboard rear seats and tether anchors on all rear seats.



## WHIPLASH-INJURY-LESSENING (WIL)<sup>20</sup> FRONT SEATS

The front seats in Yaris employ an advanced Whiplash-Injury-Lessening (WIL)<sup>20</sup> design to help reduce the risk of neck injuries. For certain rear-end collisions, WIL seatback frames are engineered to yield in a controlled fashion and help minimize the motion differential between the occupant's head and torso, the primary cause of whiplash injuries.



5-Door LE shown in Blue Streak Metallic. Prototype shown. Production model will vary.

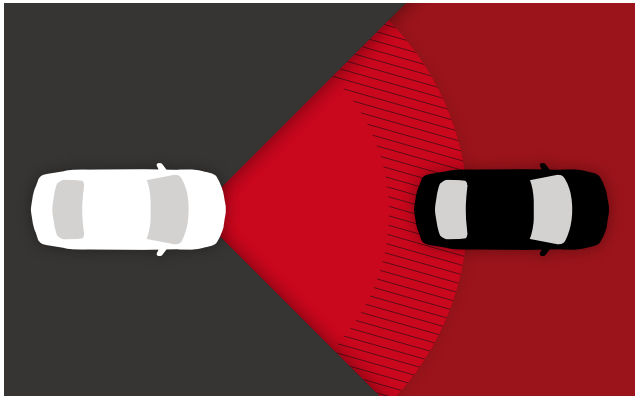






## Standard safety features that are designed around you.

The road can be unpredictable. That's why Toyota created Toyota Safety Sense™ C (TSS-C)<sup>12</sup>; an active safety package that combines Pre-Collision System (PCS)<sup>13</sup>, Lane Departure Alert (LDA)<sup>14</sup> and Automatic High Beams (AHB)<sup>15</sup> to help assist you, and it comes standard on every new Yaris. TSS-C's comprehensive features create in-the-moment safety designed to support your awareness and decision-making on the road.



### PRE-COLLISION SYSTEM (PCS)<sup>13</sup>

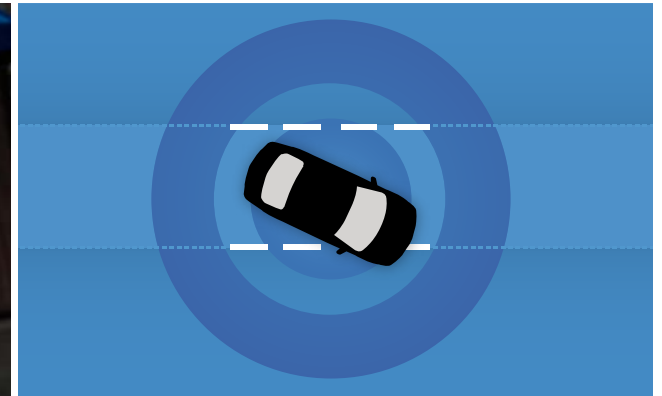
This system helps you to avoid a potential frontal collision in certain situations by alerting you with audible and visual warnings, and automatically activating brake assistance. If you do not apply the brakes and the system determines a collision with another vehicle is very probable, the system may automatically apply the brakes, reducing speed in order to help you avoid a collision or reduce the impact.

See numbered footnotes in Disclosures section.



### AUTOMATIC HIGH BEAMS (AHB)<sup>15</sup>

Automatic High Beams<sup>15</sup> allow for enhanced visibility, helping make nighttime driving safe. Using a camera to detect oncoming vehicles' headlights, Automatic High Beams can switch between high and low beams for you.



### LANE DEPARTURE ALERT (LDA)<sup>14</sup>

Lane Departure Alert<sup>14</sup> is designed to help you stay in your lane and help keep you safe from harm. Using a specialized camera, the system can detect the visible painted lane markings on the road and will alert you if you start to drift out of your lane. An audible beeping will sound and indicator light on the instrument panel will flash so that you can then take corrective action.

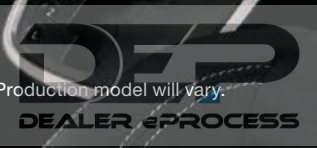


INTERIOR COMFORT AND VERSATILITY



5-Door SE interior shown in Black with available navigation.<sup>24</sup> Prototype shown with options. Production model will vary.

See numbered footnotes in Disclosures section.



# Plenty of personal space for everyone.

---

Let's face it, everyone likes their space, but everyone also wants cargo options. With its rear hatchback door, roomy cargo area and versatile 60/40 split fold-down rear seats, Yaris accommodates all kinds of stuff you wouldn't think could fit in a subcompact car. Yaris is just as adaptable as you need it to be. Load it up and go. Don't be surprised when Yaris manages to fit your entire comic book collection and then some.



## SPORT SEATS

Yaris looks and feels stylish. The sport fabric-trimmed front seats on Yaris SE are one reason for that. They're designed to hold you snugly in case you encounter some twisty roads.



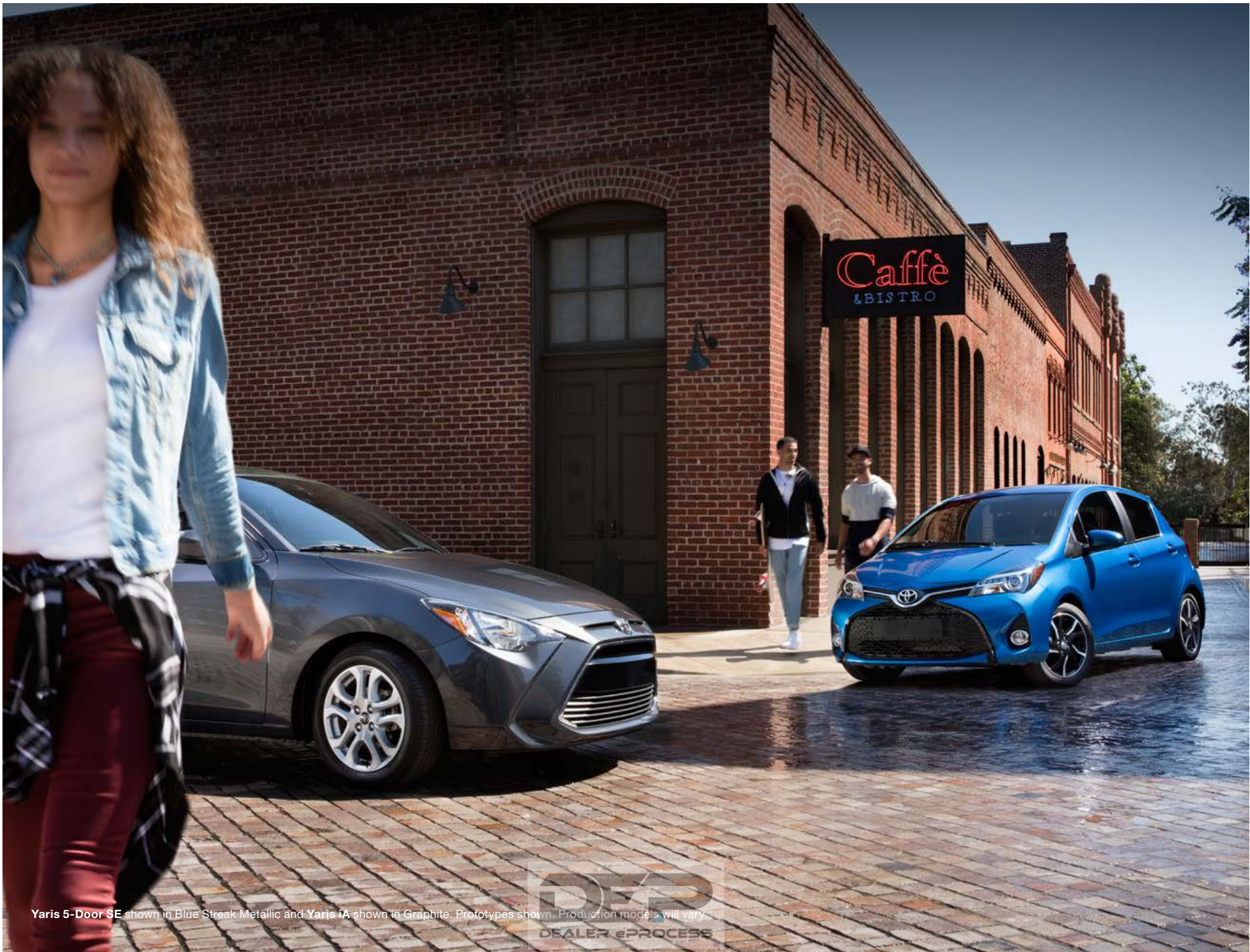
## 60/40 VERSATILITY

The 60/40 split rear seats on Yaris makes it easy to transform the space to fit more cargo.<sup>1</sup> Fold one seat down to get a little extra space; fold both, and you have room for your latest art piece.



## EASY-REACH CUP HOLDERS

Stow your stuff. Everywhere you look inside Yaris you'll find storage options. There are door pockets, a passenger-side footwell pocket and a center storage cubby. There's also a passenger-side glove compartment and cup holders.



Yaris 5-Door SE shown in Blue Streak Metallic and Yaris iA shown in Graphite. Prototypes shown. Production models will vary.



## YARIS MODELS



# L

Available in 3- or 5-door models

### Powertrain

---

- 1.5L 4-Cyl. Engine
- 5-speed manual or available 4-speed automatic transmission
- 30 city/36 hwy/33 combined EPA-est. mpg<sup>2</sup> (manual)
- 30 city/35 hwy/32 combined EPA-est. mpg<sup>2</sup> (automatic)

### Exterior Features

---

- Black front grille
- Multi-reflector halogen headlights with chrome accents
- Daytime Running Lights (DRL)
- Color-keyed outside mirrors
- 15-in. steel wheels with wheel covers

### Interior Features

---

- Yaris Entune™ Audio — includes 6.1-in. touch-screen, AM/FM CD player with MP3/WMA playback capability, six speakers, HD Radio™ Technology<sup>4</sup> with iTunes® Tagging<sup>5</sup> auxiliary audio jack, USB port<sup>6</sup> with iPod®<sup>7</sup> connectivity and control, hands-free phone capability, voice recognition and music streaming<sup>8</sup> via Bluetooth®<sup>9</sup> wireless technology
- Fabric-trimmed front seats
- 6-way adjustable driver's seat
- 4-way adjustable front passenger seat with seatback pocket
- 60/40 split fold-down rear seats
- Tilt 3-spoke steering wheel
- Power door locks with illuminated entry
- Power windows with driver-side auto down
- Passenger-side glove compartment
- 12V auxiliary power outlet
- Cargo area tonneau cover

### Safety/Features

---

- Star Safety System™ and nine airbags<sup>19</sup>
- Toyota Safety Sense™ C (TSS-C)<sup>12</sup> — includes Pre-Collision System (PCS),<sup>13</sup> Lane Departure Alert (LDA)<sup>14</sup> and Automatic High Beams (AHB)<sup>15</sup>



# LE

Available in 3- or 5-door models

Adds to or replaces features offered on L

### Powertrain

---

- 1.5L 4-Cyl. Engine
- 4-speed automatic transmission
- 30 city/35 hwy/32 combined EPA-est. mpg<sup>2</sup>

### Exterior Features

---

- Black front grille with chrome accent
- Color-keyed power outside mirrors
- 15-in. alloy wheels

### Interior Features

---

- Tilt 3-spoke steering wheel with audio controls
- Cruise control
- Remote keyless entry system
- Metallic interior trim accents with satin chrome handles

### Safety/Features

---

- Engine immobilizer<sup>22</sup>



# SE

5-door model only

Adds to or replaces features offered on LE

### Powertrain

---

- 1.5L 4-Cyl. Engine
- 5-speed manual or available 4-speed automatic transmission
- 30 city/36 hwy/33 combined EPA-est. mpg<sup>2</sup> (manual)
- 30 city/35 hwy/32 combined EPA-est. mpg<sup>2</sup> (automatic)

### Exterior Features

---

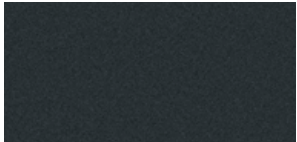
- Projector-beam headlights with black sport trim and LED light bar accent
- LED Daytime Running Lights (DRL)
- Integrated fog lights with chrome surround
- Black front grille with piano-black accent
- Rear spoiler
- 16-in. machined alloy wheels

### Interior Features

---

- Sport fabric-trimmed front seats
- Leather-trimmed tilt 3-spoke steering wheel with audio controls
- Leather-trimmed shift lever

# Color



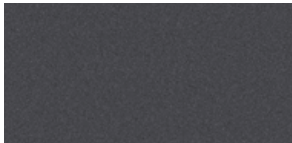
Black Sand Pearl



Barcelona Red Metallic



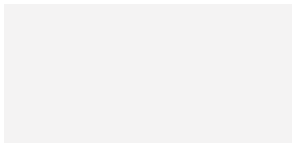
Blue Streak Metallic



Magnetic Gray Metallic



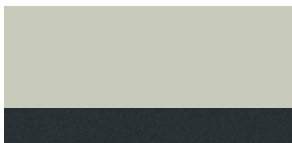
Classic Silver Metallic



Super White

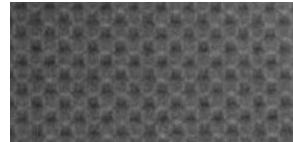


Barcelona Red Metallic/  
Black Sand Pearl<sup>23</sup>



Crushed Ice/Black Sand Pearl<sup>23</sup>

# Trim



L and LE fabric shown in  
Black (circles)



SE fabric shown in Black  
(channel)

# Wheels



L 15-in. steel wheels  
with wheel covers



LE 15-in. alloy wheels



SE 16-in. machined  
alloy wheels



ACCESSORIES

A wide range of Genuine Toyota Accessories<sup>26</sup> is available to help make your Yaris even more fun. Now your Yaris can reflect your unique style and make you stand out even more. Some accessories may not be available in all regions of the country. For a complete list of accessories, go to [toyota.com/yaris](http://toyota.com/yaris).

—  
Ashtray  
Body side moldings  
Cargo mat  
Cargo net — envelope<sup>1</sup>

Cargo tote<sup>1</sup>  
Cargo tray  
Carpet floor mats<sup>25</sup>  
Center arm rest

Door edge guards  
Emergency assistance kit  
First aid kit  
Paint protection film<sup>26</sup>

Rear bumper protector  
Rear mudguards  
Rear spoiler  
Wheel locks



Body side moldings



Cargo net — envelope<sup>1</sup>



Cargo tray



Cargo mat



Paint protection film<sup>26</sup>



Rear spoiler

SPECIFICATIONS

<b>MECHANICAL AND PERFORMANCE</b>	<b>3-DOOR L</b>	<b>3-DOOR LE</b>	<b>5-DOOR L</b>	<b>5-DOOR LE</b>	<b>5-DOOR SE</b>
1.5-Liter 4-Cylinder DOHC 16-Valve Variable Valve Timing with intelligence (VVT-i); 106 hp @ 6000 rpm; 103 lb.-ft. @ 4200 rpm	Standard	Standard	Standard	Standard	Standard
<b>EMISSION RATING</b>					
Ultra Low Emission Vehicle II (ULEV-II)	Standard	Standard	Standard	Standard	Standard
<b>TRANSMISSION</b>					
5-speed manual transmission	Available	NA	NA	NA	Available
4-speed Electronically Controlled automatic Transmission with intelligence (ECT-i)	Available	Standard	Standard	Standard	Available
<b>DRIVETRAIN</b>					
Front-Wheel Drive (FWD)	Standard	Standard	Standard	Standard	Standard
<b>BODY CONSTRUCTION</b>					
Unitized body	Standard	Standard	Standard	Standard	Standard
<b>SUSPENSION</b>					
Independent MacPherson strut front suspension with stabilizer bar; torsion beam rear suspension	Standard	Standard	Standard	Standard	NA
Sport-tuned independent MacPherson strut front suspension with stabilizer bar; torsion beam rear suspension	NA	NA	NA	NA	Standard
<b>STEERING</b>					
Sport-tuned Electric Power Steering (EPS); power-assisted rack-and-pinion	Standard	Standard	Standard	Standard	Standard
Turning circle diameter, curb to curb (ft.)	31.5	31.5	31.5	31.5	36.1
<b>BRAKES</b>					
Power-assisted ventilated front disc brakes; rear drum brakes and Star Safety System™	Standard	Standard	Standard	Standard	NA
Power-assisted ventilated front disc brakes; rear disc brakes and Star Safety System™	NA	NA	NA	NA	Standard
<b>EXTERIOR DIMENSIONS (in.)</b>					
Overall height	59.4	59.4	59.4	59.4	59.4
Overall width	66.7	66.7	66.7	66.7	66.7
Overall length	155.5	155.5	155.5	155.5	155.5
Wheelbase	98.8	98.8	98.8	98.8	98.8
Track (front/rear)	58.5/57.9	58.5/57.9	58.5/57.9	58.5/57.9	57.5/56.9
Ground clearance	5.5	5.5	5.5	5.5	5.5
<b>INTERIOR DIMENSIONS (front/rear) (in.)</b>					
Head room	39.3/37.6	39.3/37.6	39.3/37.6	39.3/37.6	39.3/37.6
Shoulder room	52.5/51.8	52.5/51.8	52.5/51.8	52.5/51.8	52.5/51.8
Hip room	50.0/49.8	50.0/49.8	50.0/50.1	50.0/50.1	50.0/50.1
Leg room	40.6/33.3	40.6/33.3	40.6/33.3	40.6/33.3	40.6/33.3
Seating capacity	5	5	5	5	5
<b>WEIGHTS/CAPACITIES</b>					
Curb weight (lb.) (manual/automatic)	2315/2335	NA/2335	NA/2335	NA/2335	2315/2335
EPA passenger volume (cu. ft.)	84.4	84.4	85.1	85.1	85.1
Cargo volume <sup>1</sup> (cu. ft.)	15.3	15.3	15.6	15.6	15.6
Fuel tank (gal.)	11.1	11.1	11.1	11.1	11.1
<b>TIRES</b>					
Size – Standard	P175/65R15	P175/65R15	P175/65R15	P175/65R15	P195/50R16
Type – All-season	Standard	Standard	Standard	Standard	Standard
Spare – Temporary	Standard	Standard	Standard	Standard	Standard
<b>MILEAGE ESTIMATES (mpg city/highway/combined)<sup>2</sup></b>					
Manual	30/37/33	NA	NA	NA	30/37/33
Automatic	30/36/32	30/36/32	30/36/32	30/36/32	30/36/32



See numbered footnotes in Disclosures section.



FEATURES<sup>3</sup>

EXTERIOR	3-DOOR L	3-DOOR LE	5-DOOR L	5-DOOR LE	5-DOOR SE		3-DOOR L	3-DOOR LE	5-DOOR L	5-DOOR LE	5-DOOR SE
Multi-reflector halogen headlights with chrome accents	S	S	S	S	—	Color-keyed outside mirrors	S	—	S	—	—
Projector-beam headlights with black sport trim and LED light bar accent	—	—	—	—	S	Color-keyed power outside mirrors	—	S	—	S	S
Integrated fog lights with chrome surround	—	—	—	—	S	Color-keyed outside door handles	S	S	S	S	S
Daytime Running Lights (DRL)	S	S	S	S	—	15-in. steel wheels with wheel covers and P175/65R15 tires	S	—	S	—	—
LED Daytime Running Lights (DRL)	—	—	—	—	S	15-in. alloy wheels with P175/65R15 tires	—	S	—	S	—
Black front grille	S	—	S	—	—	16-in. machined alloy wheels with P195/50R16 tires	—	—	—	—	S
Black front grille with chrome accent	—	S	—	S	—	Intermittent single-pantograph wet-arm windshield wiper	S	S	S	S	S
Black front grille with piano-black accent	—	—	—	—	S	Rear window wiper and defogger	S	S	S	S	S
Rear spoiler	—	—	—	—	S	Roof-mounted antenna	S	S	S	S	S
<b>INTERIOR</b>											
Air conditioning with air filter	S	S	S	S	S	Sport analog instrumentation with speedometer, tachometer and fuel gauge; LCD display with odometer, tripmeters, clock, outside temperature, current/average fuel economy, distance to empty and average speed; and warning messages	—	—	—	—	S <sup>10</sup>
Yaris Entune™ Audio — includes 6.1-in. touch-screen, AM/FM CD player with MP3/WMA playback capability, six speakers, HD Radio™ Technology <sup>4</sup> with iTunes® Tagging <sup>5</sup> , auxiliary audio jack, USB port <sup>6</sup> with iPod® <sup>7</sup> connectivity and control, hands-free phone capability, voice recognition and music streaming <sup>8</sup> via Bluetooth® <sup>9</sup> wireless technology	S	S	S	S	S	Sport analog instrumentation with speedometer, tachometer and fuel gauge; LCD display with odometer, tripmeters, clock, outside temperature, current/average fuel economy, distance to empty, average speed and shift position; ECO Driving Indicator and warning messages	—	—	—	—	S <sup>11</sup>
Fabric-trimmed front seats; 6-way adjustable driver's seat; 4-way adjustable front passenger seat with seatback pocket	S	S	S	S	—	Metallic interior trim accents with satin chrome interior door handles	—	S	—	S	S
Sport fabric-trimmed front seats; 6-way adjustable driver's seat; 4-way adjustable front passenger seat with seatback pocket	—	—	—	—	S	Remote keyless entry system with lock, unlock and panic functions	—	S	—	S	S
60/40 split fold-down rear seats	S	S	S	S	S	Power windows with driver-side auto down	S	S	S	S	S
Cruise control	—	S	—	S	S	Power door locks with illuminated entry	S	S	S	S	S
Tilt 3-spoke steering wheel	S	—	S	—	—	Day/night rearview mirror	S	S	S	S	S
Tilt 3-spoke steering wheel with audio controls	—	S	—	S	—	Front seat maplights	S	S	S	S	S
Leather-trimmed tilt 3-spoke sport steering wheel with audio controls	—	—	—	—	S	Cargo area light	S	S	S	S	S
Leather-trimmed shift lever	—	—	—	—	S	Passenger-side glove compartment	S	S	S	S	S
Analog instrumentation with speedometer, tachometer and fuel gauge; LCD display with odometer, tripmeters, clock, outside temperature, current/average fuel economy, distance to empty and average speed; and warning messages	S <sup>10</sup>	—	—	—	—	Two front and one rear cup holders with bottle holders in front doors	S	S	S	S	S
Analog instrumentation with speedometer and fuel gauge; LCD display with odometer, tripmeters, clock, outside temperature, current/average fuel economy, distance to empty, average speed and shift position; ECO Driving Indicator and warning messages	S <sup>11</sup>	S	S	S	—	12V auxiliary power outlet	S	S	S	S	S
						Dual extendable sun visors with vanity mirrors	S	S	S	S	S
						Cargo area tonneau cover	S	S	S	S	S
<b>SAFETY AND CONVENIENCE</b>											
Toyota Safety Sense™ C (TSS-C) <sup>12</sup> — includes Pre-Collision System (PCS); <sup>13</sup> Lane Departure Alert (LDA) <sup>14</sup> and Automatic High Beams (AHB) <sup>15</sup>	S	S	S	S	S	Front seatbelt pretensioners with force limiters	S	S	S	S	S
<b>STAR SAFETY SYSTEM</b> Star Safety System™ — includes Vehicle Stability Control (VSC); <sup>16</sup> Traction Control (TRAC), Anti-lock Brake System (ABS), Electronic Brake-force Distribution (EBD), Brake Assist (BA) <sup>17</sup> and Smart Stop Technology® (SST) <sup>18</sup>	S	S	S	S	S	LATCH (Lower Anchors and Tethers for Children) includes lower anchors on outboard rear seats and tether anchors on all rear seats	S	S	S	S	S
Nine airbags <sup>19</sup> — includes driver and front passenger Advanced Airbag System, driver and front passenger seat-mounted side airbags, driver knee airbag, driver and front passenger seat-cushion airbags, and front and rear side curtain airbags	S	S	S	S	S	Child-protector rear door locks	—	—	S	S	S
Driver and front passenger Whiplash-Injury-Lessening (WIL) <sup>20</sup> seats	S	S	S	S	S	Energy-absorbing collapsible steering column	S	S	S	S	S
3-point seatbelts for all seating positions; driver-side Emergency Locking Retractor (ELR) and Automatic/Emergency Locking Retractor (ALR/ELR) on all passenger seatbelts	S	S	S	S	S	Front and rear energy-absorbing crumple zones with side-impact door beams	S	S	S	S	S
						Head-impact protection structure	S	S	S	S	S
						High-tensile-strength steel body panels	S	S	S	S	S
						Tire Pressure Monitor System (TPMS) <sup>21</sup>	S	S	S	S	S
						Engine immobilizer <sup>22</sup>	—	S	—	S	S



— = Not Available

See numbered footnotes in Disclosures section.

## CARS BUILT FOR THE WAY YOU LIVE

At Toyota, we build cars for how you live. From building advanced safety features designed to help prevent crashes to driving cross-country to understand how we can make your driving experience better, our work starts with understanding your needs. Building cars for how you live also means thinking about tomorrow — from fuel efficiency and environmental innovations, to things beyond cars, like a bicycle that you can control with your mind. And because what we learn building cars can help improve lives in other places, we do things like help communities rebuild their homes quickly after a disaster and work with soup kitchens to help them serve more people faster. Toyota. Built for how you live. Together we are going places.

## DISCLOSURES

**1.** Cargo and load capacity limited by weight and distribution. **2.** 2017 EPA-estimated mileage. Actual mileage will vary. **3.** Toyota strives to build vehicles to match customer interest and thus they typically are built with popular options and option packages. Not all options/packages are available separately and some may not be available in all regions of the country. See [toyota.com](http://toyota.com) for information about options/packages commonly available in your area. If you would prefer a vehicle without any or with different options, contact your dealer to check for current availability or the possibility of placing a special order. **4.** Be sure to obey traffic regulations and maintain awareness of road and traffic conditions at all times. HD Radio™ Technology manufactured under license from iBiquity Digital Corporation U.S. and Foreign Patents. HD Radio™ and the HD, HD Radio, and “Arc” logos are proprietary trademarks of iBiquity Digital Corp. **5.** iTunes® Tagging is a registered trademark of Apple Inc. All rights reserved. **6.** May not be compatible with all mobile phones, MP3/WMA players and like models. **7.** iPod® and iPhone® are registered trademarks of Apple Inc. All rights reserved. **8.** Apps/services vary by phone/carrier; functionality depends on many factors. Select apps use large amounts of data; you are responsible for charges. Apps and services subject to change. See [toyota.com/entune](http://toyota.com/entune) for details. **9.** Concentrating on the road should always be your first priority while driving. Do not use the hands-free phone system if it will distract you. The Bluetooth® word mark and logos are registered trademarks owned by Bluetooth SIG, Inc. and any use of such marks by Toyota is under license. A compatible Bluetooth®-enabled phone must first be paired. Phone performance depends on software, coverage and carrier. **10.** Manual transmission only. **11.** Automatic transmission only. **12.** Drivers should always be responsible for their own safe driving. Please always pay attention to your surroundings and drive safely. Depending on the conditions of roads, vehicles, weather, etc., the system(s) may not work as intended. See *Owner's Manual* for details. **13.** The TSS Pre-Collision System is designed to help avoid or reduce the crash speed and damage in certain frontal collisions only. It is not a substitute for safe and attentive driving. System effectiveness depends on many factors, such as speed, driver input and road conditions. See *Owner's Manual* for details. **14.** Lane Departure Alert is designed to read lane markers under certain conditions, and provide visual and audible alerts when lane departure is detected. It is not a collision-avoidance system or a substitute for safe and attentive driving. Effectiveness depends on many factors. See *Owner's Manual* for details. **15.** Automatic High Beams operate at speeds above 25 mph. Factors such as a dirty windshield, weather, lighting and terrain limit effectiveness, requiring the driver to manually operate the high beams. See *Owner's Manual* for details. **16.** Vehicle Stability Control is an electronic system designed to help the driver maintain vehicle control under adverse conditions. It is not a substitute for safe driving practices. Factors including speed, road conditions and driver steering input can all affect whether VSC will be effective in preventing a loss of control. See *Owner's Manual* for details. **17.** Brake Assist is designed to help the driver take full advantage of the benefits of ABS. It is not a substitute for safe driving practices. Braking effectiveness also depends on proper brake-system maintenance and tire and road conditions. See *Owner's Manual* for details. **18.** Smart Stop Technology® operates only in the event of certain contemporaneous brake and accelerator pedal applications. When engaged, the system will reduce power to help the brakes bring the vehicle to a stop. Factors including speed, road conditions and driver input can all impact stopping distance. Smart Stop Technology® is not a substitute for safe and attentive driving and does not guarantee instant stopping. See *Owner's Manual* for details. **19.** All the airbag systems are Supplemental Restraint Systems. All airbags (if installed) are designed to inflate only under certain conditions and in certain types of severe collisions: typically, frontal and knee airbags inflate in frontal collisions, side torso and side curtain airbags inflate in side collisions and roll-sensing curtain airbags inflate at a severe roll angle or roll rate. To decrease the risk of injury from an inflating airbag, always wear seatbelts, sit upright in the middle of the seat as far back as possible and do not lean against the door. Do not put objects in front of an airbag or around the seatback. Do not use a rearward-facing child seat in any front passenger seat. The force of an inflating airbag may cause serious injury or death. See your *Owner's Manual* for further information/warnings. **20.** Whiplash-Injury-Lessening front seats can help reduce the severity of whiplash injury in certain rear-end collisions. **21.** The Toyota Tire Pressure Monitor alerts the driver when tire pressure is critically low. For optimal tire wear and performance, tire pressure should be checked regularly with a gauge; do not rely solely on the monitor system. See *Owner's Manual* for details. **22.** The engine immobilizer is a state-of-the-art anti-theft system. When you insert your key into the ignition switch or bring a Smart Key fob into the vehicle, the key transmits an electronic code to the vehicle. The engine will only start if the code in the transponder chip inside the key/fob matches the code in the vehicle's immobilizer. Because the transponder chip is embedded in the key/fob, it can be costly to replace. If you lose a key or fob, your Toyota dealer can help, or you can find a qualified independent locksmith to perform high-security key services by consulting your local Yellow Pages or by contacting [www.aloa.org](http://www.aloa.org). **23.** Extra-cost color. **24.** Availability and accuracy of the information provided by the navigation system is dependent upon many factors. Use common sense when relying on information provided. Services and programming subject to change. SERVICES NOT AVAILABLE in every city or roadway. Updates may be available from your dealer at an additional cost. See *Owner's Manual* for details. **25.** This floor mat was designed specifically for use in your model and model year vehicle and SHOULD NOT be used in any other vehicle. To avoid potential interference with pedal operation, each mat must be secured with fasteners. Do not install a floor mat on top of an existing floor mat. **26.** The Toyota Genuine Accessory Warranty will only apply when the installation is performed by a trained Toyota-approved installer. Please see dealer for details.

## WARRANTIES

Every Toyota Car, Truck and SUV is built to exceptional standards. And that's not idle boasting. We back it up with these Limited Warranty Coverages:

**Basic:** 36 months/36,000 miles (all components other than normal wear and maintenance items).

**Powertrain:** 60 months/60,000 miles (engine, transmission/transaxle, drive system, seatbelts and airbags).

**Rust-Through:** 60 months/unlimited miles (corrosion perforation of sheet metal).

**Emissions:** Coverages vary under Federal and California regulations. Refer to applicable *Warranty and Maintenance Guide* for details.

**Accessories:** For Genuine Toyota Accessories purchased at the time of the new vehicle purchase, the Toyota Accessory Warranty coverage is in effect for 36 months/36,000 miles from the vehicle's in-service date, which is the same coverage as the Toyota New Vehicle Limited Warranty.

Toyota strives to build vehicles to match customer interest and thus they typically are built with popular options and option packages. Not all options/packages are available separately and some may not be available in all regions of the country. See [toyota.com](http://toyota.com) for information about options/packages commonly available in your area. If you would prefer a vehicle without any or with different options, contact your dealer to check for current availability or the possibility of placing a special order. Some vehicles are shown with available equipment. Seatbelts should be worn

For Genuine Toyota Accessories purchased after the new vehicle purchase the coverage is 12 months, regardless of mileage, from the date the accessory was installed on the vehicle, or the remainder of any applicable new vehicle warranty, whichever provides greater coverage, with the exception of car covers. Car covers are warranted for 12 months from the date of purchase and do not assume any coverage under the Toyota New Vehicle Limited Warranty.

You may be eligible for transportation assistance if it's necessary that your vehicle be kept overnight for repairs covered under warranty. Please see your authorized Toyota dealership for further details.

For complete details about Toyota's warranties, please visit [www.toyota.com](http://www.toyota.com), refer to the applicable *Warranty and Maintenance Guide* or see your Toyota dealer.

at all times. For details on vehicle specifications, standard features and available equipment in your area, contact your Toyota dealer. A vehicle with particular equipment may not be available at the dealership. Ask your Toyota dealer to help locate a specifically equipped vehicle.

All information presented herein is based on data available at the time of posting, is subject to change without notice and pertains specifically to mainland U.S.A. vehicles only. Prototypes shown. Actual production vehicles will vary.

