

2018 Highlander



Bring style to every road trip. The 2018 Toyota Highlander.

Let's take family outings to the next level. With its bold look and a whole lot of welcome features, the 2018 Toyota Highlander helps you get more from every adventure. The sheer variety of grade options — like the sporty SE — ensures there's a Highlander that's perfect for your family's lifestyle. An available 3.5-liter V6 direct-injection engine and available Direct Shift-8AT (8-speed Automatic Transmission) give you the power and efficiency to take your journeys farther. With Highlander's premium interior, everyone will arrive feeling refreshed and ready for more fun. Your next favorite memory begins as soon as you get inside.



"A prime location, a stylish space and
a ton of fun things to do. This will be
one weekend to remember."



SE AWD shown in Midnight Black Metallic.

It's time to see and be seen.

Let's make a powerful impression. Whether you're looking to get away or just get around town, you'll find Highlander's sleeker design will not go unnoticed. The bold front grille expresses confidence on any road, LED taillights and larger alloy wheels add a touch of sophistication, and available puddle lights help light up every entrance in style. Let's live life to the fullest with every trip, no matter where we're headed.



EXQUISITE FRONT END

The sculpted grille is flanked by smart and stylish headlights, which incorporate available integrated Daytime Running Lights (DRL). The SE grade has dark-black-accent headlights, while Highlander Limited and Limited Platinum grades feature smoked-chrome-accent headlight housings.



LED TAILLIGHTS

"Show 'em your taillights" has a whole new meaning. Every 2018 Highlander comes standard with LED taillights for added visibility in the rear.



19-IN. ALLOY WHEELS

The sporty Highlander SE features 19-in. multi-spoke alloy wheels with a machined finish. Highlander Platinum has an added touch of sophistication with 19-in. 5-spoke Dark Chromtec® alloy wheels.



PUDDLE LIGHTS

This is how you make an entrance. This available feature detects you as you approach Highlander and, on Platinum Package, projects an illuminated "Highlander" logo onto the ground directly below the side mirrors.

PREMIUM EXTERIOR



SE AWD shown in Midnight Black Metallic.

Power that's ready to go.

Wherever the day takes you, Highlander has the power to get there. Thanks to an available 3.5-liter V6 direct-injection engine paired with an advanced available Direct Shift-8AT (8-speed Automatic Transmission), the powertrain is built to generate more horsepower and torque while enhancing fuel efficiency. Highlander also offers an available Stop and Start Engine System (S&S)³⁹, making it even more efficient in traffic. If you want to flex its muscle, know that you're capable to tow⁴⁵ up to 5000 lbs. It's power that connects you to a better all-around ride.



3.5-LITER ENGINE

Talk about an impressive powertrain. Highlander offers an available powertrain featuring a 3.5-liter V6 direct-injection engine and available Direct Shift-8AT (8-speed Automatic Transmission). Not only does this help improve acceleration, it helps maximize mpg while cruising at speed.



STOP AND START ENGINE SYSTEM (S&S)³⁹

Available on gas-powered Highlanders is the available Stop and Start Engine System (S&S). This shuts the engine off when Highlander is at rest — like when at a stoplight — to help save more fuel. When it's time to go, releasing the brake restarts the engine so you can get on your way.



AVAILABLE 5000-LB. TOWING CAPACITY⁴⁵

Some adventures are so big you have to tow them. No problem. Thanks to its available 3.5-liter V6 direct-injection engine, a properly equipped Highlander can tow up to 5000 lbs.

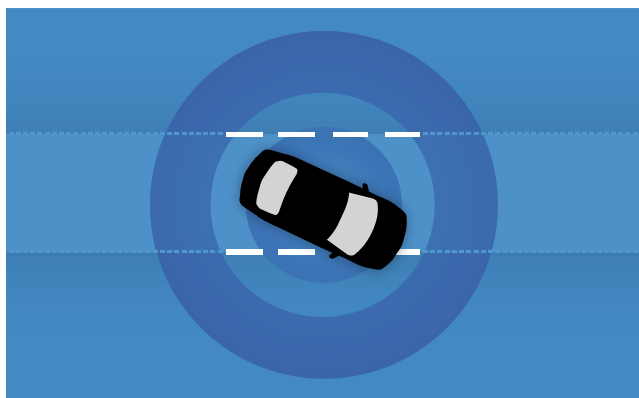
PERFORMANCE



Limited shown in Ooh La La Rouge Mica with available Platinum Package.

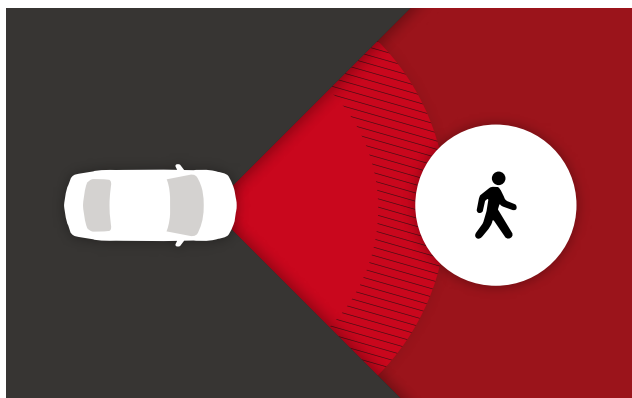
Integrated safety to help support your drive.

The road can be unpredictable. That's why Highlander comes standard with Toyota Safety Sense™ P (TSS-P).²¹ This active safety package combines Pre-Collision System²² with Pedestrian Detection²³ (PCS w/PD), Lane Departure Alert with Steering Assist (LDA w/SA);²⁴ Automatic High Beams (AHB)²⁵ and Dynamic Radar Cruise Control (DRCC)¹⁸ to assist you. TSS-P's comprehensive features create in-the-moment safety designed to support your awareness and decision-making on the road.



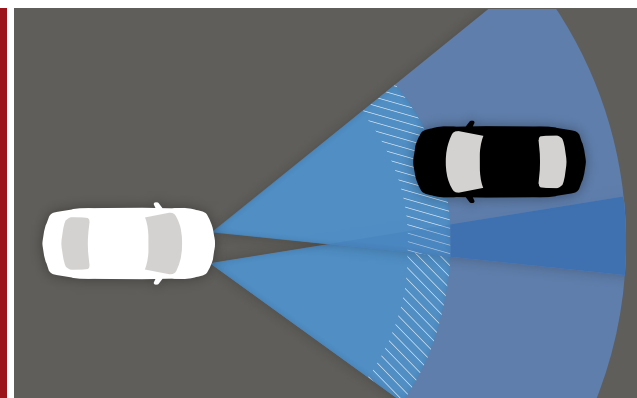
LANE DEPARTURE ALERT WITH STEERING ASSIST (LDA w/SA)²⁴

If an inadvertent lane departure is detected, the Lane Departure Alert system will issue both an audible alert and visual warning on the Multi-Information Display (MID) screen. If the system determines that the driver is not taking corrective action, the Steering Assist function will initiate and provide gentle corrective steering when necessary to help keep the vehicle in the lane.



PRE-COLLISION SYSTEM²² WITH PEDESTRIAN DETECTION²³ (PCS w/PD)

Pre-Collision System with Pedestrian Detection is designed to help keep the road safe by detecting a vehicle or pedestrian in certain situations. By combining millimeter-wave radar with a camera capable of shape recognition, the system provides an audible warning and a display notification to alert you of a possible collision with a pedestrian under certain circumstances. If you don't react, automatic braking support helps mitigate the potential for a collision.



AUTOMATIC HIGH BEAMS (AHB)²⁵

Enhance visibility and help make nighttime driving safe. This system uses a camera to help detect oncoming vehicles as far away as 2000 feet and, depending on the circumstances, it can automatically switch the high beams on and off, helping make it easier for other drivers on the road.



SE AWD shown in Midnight Black Metallic and **Hybrid Limited** shown in Blizzard Pearl⁴⁷ with available Platinum Package.

See numbered footnotes in Disclosures section.

Peace of mind for the journey ahead.

Let's help make every road trip a safe one. Every new Highlander comes standard with the Star Safety System,TM our advanced integration of safety technologies that includes Enhanced Vehicle Stability Control (VSC),²⁶ Traction Control (TRAC), Anti-lock Brake System (ABS), Electronic Brake-force Distribution (EBD), Brake Assist (BA),²⁷ and Smart Stop Technology[®] (SST).²⁸ With eight standard airbags,³⁰ plus technologies like available Safety Connect,^{®36} you can rest assured that Highlander has got your back.



ToyotaCare
No Cost Service & Roadside

TOYOTACARE⁴⁰

Toyota is devoted to safety and dependability, and proper vehicle maintenance is important to both. That's why we include a no cost maintenance plan with the purchase or lease of every new Toyota for 2 years or 25,000 miles, whichever comes first. 24-hour roadside assistance⁴¹ is also included for 2 years and unlimited miles.



LATCH

LATCH (Lower Anchors and Tethers for Children) provides an added measure of safety for the smaller members of your family. LATCH includes lower anchors and tethers on the outboard second-row seats and a tether anchor on the middle seat of the second and third rows.



8 AIRBAGS³⁰

An Advanced Airbag System helps protect you and your family with driver and front passenger dual stage airbags, driver and front passenger seat-mounted side airbags, a driver knee airbag, a front passenger seat-cushion airbag and Roll-sensing Side Curtain Airbags (RSCA) for all rows.

SAFETY



Limited shown in Ooh La La Rouge Mica with available Platinum Package.

Comfort that's always a crowd-pleaser.

A big part of enhancing the driving experience is making sure everyone is comfortable. With seating for up to eight, we've made sure to turn up the premium experience for you and your passengers. Available high-end leather-trimmed seating and distinct accents add sophistication to the interior, while five USB ports⁵ give everyone accessibility to their devices. Push a button and an available panoramic moonroof lets everyone enjoy the view. Highlander is designed to be just as versatile, fun and comfortable as you need, because some of the best memories are the ones you don't plan for.



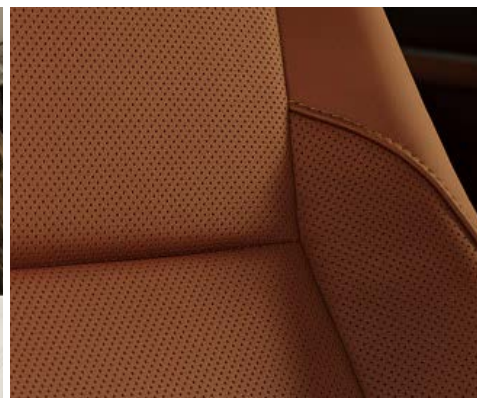
FIVE USB PORTS⁵

Five USB ports make it easy to power up the family road trip. With two USB ports up front, and three USB ports in the rear, everyone can plug in their favorite portable electronic devices.



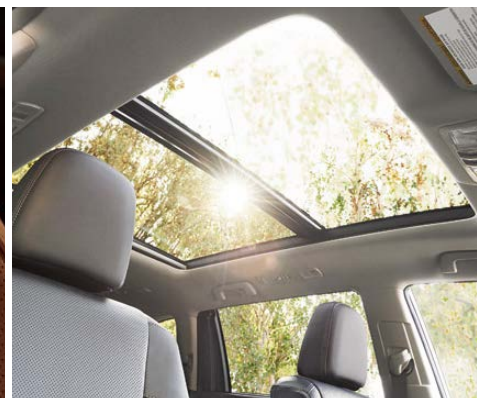
8-PASSENGER SEATING

Highlander's roomy interior gives you enough space to seat up to eight people and provides more comfort along the way with reclining third-row seats.



SADDLE TAN INTERIOR TRIM

Highlander Limited and Limited Platinum include Saddle Tan interior trim. Featuring high-grade leather-trimmed seating surfaces and touch points, this interior ensures all occupants ride in total luxury.



PANORAMIC MOONROOF

In-seat freedom for everyone. Your passengers have the whole sky to inspire them, thanks to the available panoramic moonroof.

STYLISH INTERIOR



SE AWD interior shown in Black leather-trimmed seats with unique ribbon inserts and silver stitching.

Here comes life. Are you ready?

There's a lot that goes into each day, and Highlander has thought of everything. A standard backup camera³ and available Bird's Eye View Camera⁴ enhance the way you see, while available Blind Spot Monitor (BSM)² and Rear Cross-Traffic Alert (RCTA)³⁷ help alert you to the things that might be out of sight. You can also change the view for your rear passengers with the available rear-seat Blu-ray Disc™ entertainment system that drops down for easy viewing. Now you're ready to take on any adventure that comes your way.



BIRD'S EYE VIEW CAMERA⁴ WITH PERIMETER SCAN

Highlander's available Bird's Eye View Camera helps you see nearby objects and get into and out of spaces with ease. The system includes Perimeter Scan — an innovative feature that displays live, rotating 360-degree views of your surroundings when you're parked.



BLIND SPOT MONITOR² AND RCTA³⁷

The available Blind Spot Monitor (BSM) and Rear Cross-Traffic Alert (RCTA) help heighten your awareness on the road. They provide audible and visual indicators, alerting you when a vehicle enters a blind spot or if a vehicle approaches while Highlander slowly backs out of a driveway or parking space.



STANDARD BACKUP CAMERA³ WITH PROJECTED PATH

When it comes to safety and convenience, Highlander delivers. Whether you're backing up or parallel parking, the standard backup camera can serve as a guide by showing what the camera detects on the touch-screen display.



REAR-SEAT ENTERTAINMENT

Entertaining from the driver's seat is tough. Let the available rear-seat Blu-ray Disc™ entertainment system help. The 9-in. display screen comes with RCA jacks, a remote and two wireless headphones.¹⁷



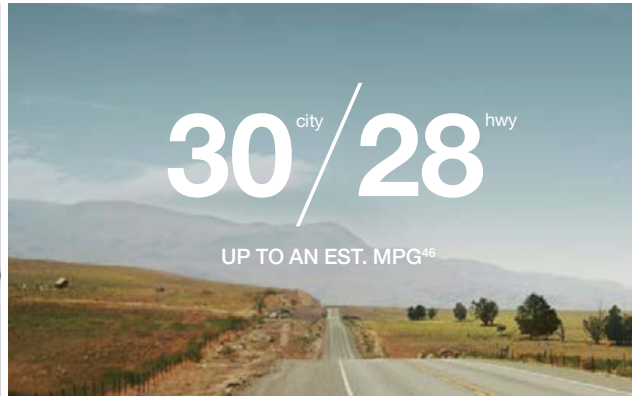
The scenic route never looked so good.

Give every day a chance to reach its potential. Highlander Hybrid generates as much as 306 hybrid system net horsepower, with up to an EPA-estimated 30 mpg city.⁴⁶ Constantly having to search for a fuel pump is a thing of the past, and we didn't have to sacrifice power or performance in the process. It has up to 3500 lbs. of towing⁴⁵ power and is equipped with the capability of Electronic On-Demand AWD system with intelligence (AWD-i). It's time to start expecting more from every drive.



AWD-i BADGING

There's a Highlander Hybrid for every type of family. The 2018 lineup includes a hybrid version of Highlander LE, XLE, Limited and Limited Platinum.



MPG⁴⁶

Optimizing fuel efficiency means making enhancements all over. Highlander Hybrid offers up to an EPA-estimated 30 mpg city and 28 mpg highway. The transmission and efficient engine help to enhance EPA mpg estimates and earn Highlander Hybrid a Super Ultra Low Emission Vehicle (SULEV) rating.⁴³



ECO MODE, EV MODE⁴²

In ECO Mode, Highlander Hybrid modifies throttle response to help with fuel economy and can also help when you're slowly accelerating on low-traction surfaces such as snow or ice. EV Mode uses only the electric motor for situations where you're driving at low speeds for short distances, such as in a parking garage.

HYBRID



Hybrid Limited shown in Blizzard Pearl⁴⁷ with available Platinum Package.

See numbered footnotes in Disclosures section.



LE

Exterior Features

- Projector-beam halogen smoked-chrome-accent headlights
- LED taillights and stop lights
- 18-in. split 5-spoke machined alloy wheels
- Windshield wiper de-icer
- Color-keyed heated power outside mirrors with turn signal indicators and folding feature

Interior Features

- Seating for up to eight
- Soft-touch in-dash shelf with easy cable management
- Five total USB ports⁵ — 3 front, 2 second row
- 24.5-liter soft-touch roll-top center console with removable utility tray
- Second- and third-row 60/40 split, sliding and reclining fold-flat seating
- Integrated backup camera³ with projected path
- Entune™ Audio — includes 6.1-in. touch-screen display, *Bluetooth*®⁶ wireless technology and advanced voice recognition⁷
- 4.2-in. color LCD Multi-Information Display (MID)
- 6-way adjustable driver's seat
- 4-way adjustable front passenger seat

Safety Features

- Toyota Safety Sense™ P (TSS-P)²¹
- Star Safety System™
- Eight airbags³⁰



LE Plus

Adds to or replaces features offered on LE

Exterior Features

- Integrated fog lights
- Flip-up rear hatch window
- Height-adjustable power liftgate with jam protection

Interior Features

- Seating for up to eight
- Entune™ Audio Plus — includes 8-in. high-resolution touch-screen display, *Bluetooth*®⁶ wireless technology, advanced voice recognition⁷ and Scout® GPS Link¹¹ compatible
- SofTex®/cloth seats with contrast stitching
- 8-way power-adjustable driver's seat
- Three-zone automatic climate control with separate second-row control panel and individual temperature settings for driver
- Stop and Start Engine System (S&S)³⁹

Safety Features

- Toyota Safety Sense™ P (TSS-P)²¹



XLE

Adds to or replaces features offered on LE Plus

Exterior Features

- Power tilt/slide moonroof with sunshade and jam protection
- Chromtec® roof rails
- 18-in. turbine-look alloy wheels
- Blind Spot Monitor (BSM)² and Rear Cross-Traffic Alert (RCTA)³⁷

Interior Features

- Seating for up to eight
- Entune™ Premium Audio with Integrated Navigation¹⁴ and Entune® App Suite¹⁵ and 8-in. high-resolution touch-screen display
- 4.2-in. color LCD Multi-Information Display (MID) with turn-by-turn navigation¹⁴
- Leather-trimmed seats with heated front seats
- Second-row retractable window sunshades
- Auto-dimming rearview mirror
- HomeLink®²⁰ universal transceiver
- Second-row 120V auxiliary AC power outlet
- Smart Key System¹⁹ with Push Button Start
- Driver Easy Speak — driver voice amplification

Safety Features

- Toyota Safety Sense™ P (TSS-P)²¹

Options

- Seating for eight with second-row bench
- Rear-seat Blu-ray Disc™ entertainment system



SE

Adds to or replaces features offered on XLE

Exterior Features

- Projector-beam halogen dark-black-accent headlights w/LED Daytime Running Lights (DRL)
- 19-in. multi-spoke machined alloy wheels with black finish
- Dark-painted roof rails
- Sport-tuned suspension

Interior Features

- Seating for up to seven
- Soft-touch upper door trim with technical pattern accent
- Black leather-trimmed seats with unique ribbon inserts and silver stitching
- Blue LED ambient lighting in interior of front and rear doors and in-dash shelf

Safety Features

- Toyota Safety Sense™ P (TSS-P)²¹

Options

- Rear-seat Blu-ray Disc™ entertainment system



Limited

Adds to or replaces features offered on SE

Exterior Features

- 19-in. 5-spoke Chromtec® alloy wheels
- Rear parking assist sonar³⁸
- LED Daytime Running Lights (DRL)
- Blind Spot Monitor (BSM)² and Rear Cross-Traffic Alert (RCTA)³⁷
- Color-keyed heated power outside mirrors with turn signal indicators and puddle lights

Interior Features

- Seating for up to eight
- Available Saddle Tan interior color
- Entune™ Premium JBL®¹⁶ Audio with Integrated Navigation¹⁴ and Entune® App Suite;⁵ and 8-in. high-resolution touch-screen display
- Perforated heated and ventilated leather-trimmed front seats with memory function on driver's seat
- 4-way power-adjustable front passenger seat
- Rear cargo area tonneau cover

Safety Features

- Toyota Safety Sense™ P (TSS-P)²¹

Options and Packages

- Seating for eight with second-row bench
- Rear-seat Blu-ray Disc™ entertainment system
- Platinum Package
 - Panoramic moonroof
 - Heated steering wheel
 - Heated second-row captain's chairs
 - Rain-sensing windshield wipers
 - 19-in. 5-spoke Dark Chromtec® alloy wheels
 - Bird's Eye View Camera⁴ with Perimeter Scan feature
 - Front and rear parking assist sonar³⁸
 - Puddle lights with "Highlander" projection



Hybrid LE

Exterior Features

- Projector-beam halogen smoked-chrome-accent headlights
- LED taillights and stop lights
- 18-in. split 5-spoke machined alloy wheels
- Windshield wiper de-icer
- Color-keyed heated power outside mirrors with turn signal indicators and folding feature
- Hybrid and AWD-i badging

Interior Features

- Seating for up to eight
- Soft-touch in-dash shelf with easy cable management
- Five total USB ports⁵ — 3 front, 2 second row
- 24.5-liter soft-touch roll-top center console with removable utility tray
- Second- and third-row 60/40 split, sliding and reclining fold-flat seating
- Integrated backup camera³ with projected path
- Entune™ Audio — includes 6.1-in. touch-screen display, *Bluetooth*®⁶ wireless technology and advanced voice recognition⁷
- 4.2-in. color LCD Multi-Information Display (MID)
- Smart Key System¹⁹ with Push Button Start
- 6-way adjustable driver's seat
- 4-way adjustable front passenger seat
- EV⁴²/ECO Modes
- Energy monitor display
- Hybrid system power meter

Safety Features

- Toyota Safety Sense™ P (TSS-P)²¹
- Star Safety System™
- Eight airbags³⁰



Hybrid XLE

Adds to or replaces features offered on Hybrid LE

Exterior Features

- Power tilt/slide moonroof with sunshade and jam protection
- Height-adjustable power liftgate with jam protection
- Chromtec® roof rails
- 18-in. turbine-look alloy wheels
- Blind Spot Monitor (BSM)² and Rear Cross-Traffic Alert (RCTA)³⁷
- Hybrid and AWD-i badging

Interior Features

- Seating for up to eight
- Entune™ Premium Audio with Integrated Navigation¹⁴ and Entune® App Suite,¹⁵ and 8-in. high-resolution touch-screen display
- 4.2-in. color LCD Multi-Information Display (MID) with turn-by-turn navigation¹⁴
- Leather-trimmed seats with heated front seats
- Second-row retractable window sunshades
- Auto-dimming rearview mirror
- HomeLink®²⁰ universal transceiver
- Second-row 120V auxiliary AC power outlet
- Smart Key System¹⁹ with Push Button Start
- Driver Easy Speak — driver voice amplification
- EV⁴²/ECO Modes
- Energy monitor display
- Hybrid system power meter

Safety Features

- Toyota Safety Sense™ P (TSS-P)²¹

Options

- Rear-seat Blu-ray Disc™ entertainment system



Hybrid Limited

Adds to or replaces features offered on Hybrid XLE

Exterior Features

- 19-in. 5-spoke Chromtec® alloy wheels
- Rear parking assist sonar³⁸
- LED Daytime Running Lights (DRL)
- Blind Spot Monitor (BSM)² and Rear Cross-Traffic Alert (RCTA)³⁷
- Color-keyed heated power outside mirrors with turn signal indicators and puddle lights
- Hybrid and AWD-i badging

Interior Features

- Seating for up to seven
- Entune™ Premium JBL®¹⁶ Audio with Integrated Navigation¹⁴ and Entune® App Suite,¹⁵ and 8-in. high-resolution touch-screen display
- Rear cargo area tonneau cover
- Perforated heated and ventilated leather-trimmed front seats with memory function on driver's seat
- 4-way power-adjustable front passenger seat
- EV⁴²/ECO Modes
- Energy monitor display
- Hybrid system power meter

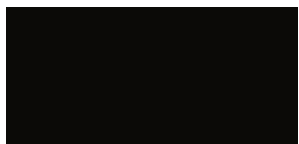
Safety Features

- Toyota Safety Sense™ P (TSS-P)²¹

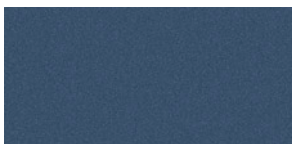
Options and Packages

- Rear-seat Blu-ray Disc™ entertainment system
- Platinum Package
 - Panoramic moonroof
 - Heated steering wheel
 - Heated second-row captain's chairs
 - Rain-sensing windshield wipers
 - 19-in. 5-spoke Dark Chromtec® alloy wheels
 - Bird's Eye View Camera⁴ with Perimeter Scan feature
 - Front and rear parking assist sonar³⁸
 - Puddle lights with "Highlander" projection

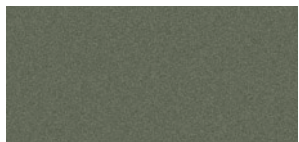
Color



Midnight Black Metallic



Shoreline Blue Pearl



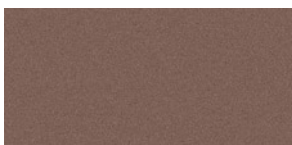
Alumina Jade Metallic



Ooh La La Rouge Mica



Salsa Red Pearl



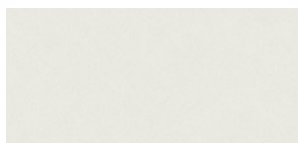
Toasted Walnut Pearl



Predawn Gray Mica



Celestial Silver Metallic



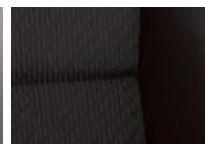
Blizzard Pearl⁴⁷

Trim



LE fabric shown in Ash

Also available in

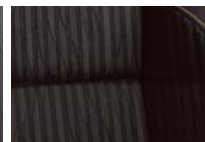


Black fabric

Also available in



LE Plus SofTex®/cloth shown in Ash



Black SofTex®/cloth

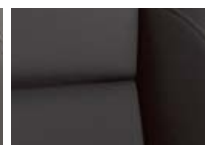


Almond SofTex®/cloth

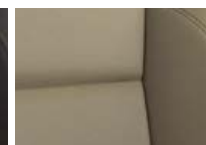
Also available in



XLE leather shown in Ash



Black leather



Almond leather



SE leather trim shown in Black with unique ribbon inserts and silver stitching

Also available in



Limited and Hybrid Limited perforated leather shown in Black stitching



Ash perforated leather



Almond perforated leather



Saddle Tan

Wheels



LE 18-in. split 5-spoke alloy wheel



LE Plus 18-in. split 5-spoke alloy wheel with gunmetal-gray finish



XLE 18-in. turbine-look alloy wheel with painted finish



SE 19-in. multi-spoke alloy wheel with black finish



Limited 19-in. 5-spoke Chromtec® alloy wheel



Limited Platinum 19-in. 5-spoke Dark Chromtec® alloy wheel

*Not all colors and trims available on all model grades. See dealer for details. See numbered footnotes in Disclosures section.

ACCESSORIES

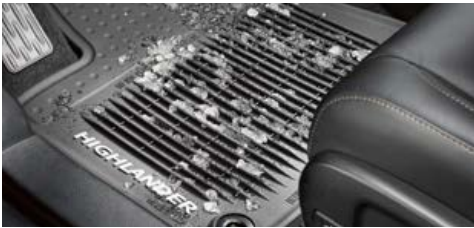
A wide range of Genuine Toyota Accessories is available to help make driving your Highlander even more fun. Now your Highlander can reflect your personal style. There's something for everyone. Some accessories may not be available in all regions of the country. For a complete list of accessories, go to toyota.com/Highlander.

All-weather floor mats⁴⁸
Body side moldings
Cargo cover
Cargo liner
Cargo net — envelope⁴⁴
Cargo tote

Carpet cargo mat
Carpet floor mats⁴⁸
Door edge guards
Emergency assistance kit
First aid kit
Mudguards

Paint protection film⁴⁹
Rear bumper appliqué
Rear bumper protector
Remote Engine Starter⁵⁰
Roof rail cross bars
Running boards⁵¹

Tow hitch receiver with towing wire harness⁴⁵
Trailer ball and ball mount⁴⁵
Vehicle Intrusion Protection (VIP)
RS3200 Plus Security System with
Glass Breakage Sensor (GBS)⁵²
Wireless headphones¹⁷



All-weather floor mats⁴⁸



Cargo cover



Carpet floor mats⁴⁸



Mudguards



Rear bumper protector



Roof rail cross bars (LE, LE Plus)



Roof rail cross bars (XLE, SE, Limited)



Running boards⁵¹

See numbered footnotes in Disclosures section.

FEATURES¹

EXTERIOR	LE	LE PLUS	XLE	SE	LIMITED	HYBRID LE	HYBRID XLE	HYBRID LIMITED
Projector-beam halogen smoked-chrome-accent headlights with auto on/off feature	S	S	S	—	—	S	S	—
Projector-beam halogen dark-black-accent headlights w/LED Daytime Running Lights (DRL) and auto on/off feature	—	—	—	S	—	—	—	—
Projector-beam halogen smoked-chrome-accent headlights w/LED Daytime Running Lights (DRL) and on/off feature	—	—	—	—	S	—	—	S
Daytime Running Lights (DRL) with on/off feature	S	S	S	—	—	S	S	—
Headlight-integrated LED Daytime Running Lights (DRL) with on/off feature	—	—	—	S	S	—	—	S
Integrated fog lights	—	S	S	S	S	—	S	S
LED taillights and stop lights	S	S	S	S	S	S	S	S
Hybrid Blue accent badges	—	—	—	—	—	S	S	S
Color-keyed heated power outside mirrors with turn signal lights and folding feature	S	S	—	—	—	S	—	—
Color-keyed heated power outside mirrors with turn signal lights and blind spot warning indicators² and folding feature	—	—	S	S	—	—	S	—
Color-keyed heated power outside mirrors with memory, turn signal lights and blind spot warning indicators²; puddle lights with folding feature	—	—	—	—	S	—	—	S
Color-keyed outside door handles	S	S	S	S	S	S	S	S
Power tilt/slide moonroof with sunshade and jam protection	—	—	S	S	S	—	S	S
Panoramic moonroof with power sunshade and jam protection	—	—	—	—	P	—	—	P
18-in. split 5-spoke machined-face alloy wheels and black center caps with P245/60R18 105S tires	S	—	—	—	—	S	—	—
18-in. split 5-spoke machined alloy wheels with gunmetal-gray finish and black center caps with P245/60R18 105S tires	—	S	—	—	—	—	—	—
18-in. turbine-look alloy wheels with painted finish and black center caps with P245/60R18 105S tires	—	—	S	—	—	—	S	—
19-in. multi-spoke machined alloy wheels with black finish and black center caps with P245/55R19 105S tires	—	—	—	S	—	—	—	—
19-in. 5-spoke Chromtec® alloy wheels and black center caps with P245/55R19 105S tires	—	—	—	—	S	—	—	S
19-in. 5-spoke Dark Chromtec® alloy wheels and black center caps with P245/55R19 105S tires	—	—	—	—	P	—	—	P
Black front and rear mudguards (Standard on AWD grades)	O	O	O	O	O	S	S	S
Washer-linked variable intermittent windshield wipers and intermittent rear wiper	S	S	S	S	S	S	S	S
Windshield wiper de-icer	S	S	S	S	S	S	S	S
UV reduction glass on all windows	S	S	S	S	S	S	S	S
High Solar Energy-Absorbing (HSEA) glass on front and rear side windows	S	S	S	S	S	S	S	S
Privacy glass on rear side, quarter and liftgate windows	S	S	S	S	S	S	S	S
Flip-up rear hatch window	—	S	S	S	S	S	S	S
Height-adjustable power liftgate with jam protection	—	S	S	S	S	—	S	S
Color-keyed rear spoiler with LED center high-mount stop light	S	S	S	S	S	S	S	S
Chromtec® roof rails	—	—	S	—	S	—	S	S
Dark-painted roof rails	—	—	—	S	—	—	—	—
Rain-sensing windshield wipers	—	—	—	—	P	—	—	P
Rear bumper chrome garnish	—	—	—	—	S	—	—	S
INTERIOR								
Front and rear air conditioning with air filter and second- and third-row vents	S	—	—	—	—	S	—	—
Three-zone automatic climate control with air filter, separate second-row control panel, individual temperature settings for driver, front passenger and rear-seat passengers, and second- and third-row vents	—	S	S	S	S	—	S	S
Integrated backup camera³ with projected path	S	S	S	S	—	S	S	—
Integrated backup camera³ with dynamic gridlines	—	—	—	—	S	—	—	S
Bird's Eye View Camera⁴ with Perimeter Scan, overhead 360-degree view in drive and reverse, and curb view	—	—	—	—	P	—	—	P
Entune™ Audio — includes 6.1-in. touch-screen display, AM/FM CD player, six speakers, auxiliary port, USB 2.0 port⁵ with iPod® connectivity and control, advanced voice recognition,⁷ hands-free phone capability, phone book access and music streaming⁸ via Bluetooth® wireless technology, and Siri® Eyes Free.⁹ See toyota.com/entune for details.	S	—	—	—	—	S	—	—
Entune™ Audio Plus — includes 8-in. high-resolution touch-screen display, AM/FM/HD Radio™¹⁰ CD player, six speakers, auxiliary port, USB 2.0 port⁵ with iPod® connectivity and control, advanced voice recognition,⁷ hands-free phone capability, phone book access and music streaming⁸ via Bluetooth® wireless technology, Scout® GPS Link¹¹ compatible, Siri® Eyes Free⁹ and SiriusXM® Satellite Radio¹² with 3-month All Access trial¹³ See toyota.com/entune for details.	—	S	—	—	—	—	—	—

See numbered footnotes in Disclosures section.

S = Standard O = Optional — = Not available P = Available as part of a package

INTERIOR (continued)	LE	LE PLUS	XLE	SE	LIMITED	HYBRID LE	HYBRID XLE	HYBRID LIMITED
Entune™ Premium Audio with Integrated Navigation ¹⁴ and Entune® App Suite ¹⁵ — includes 8-in. high-resolution touch-screen with split-screen display, AM/FM cache radio, HD Radio™ ¹⁰ CD player, six speakers, auxiliary port, USB 2.0 port ⁵ with iPod® ⁸⁶ connectivity and control, advanced voice recognition, ⁷ hands-free phone capability, phone book access and music streaming ⁸ via <i>Bluetooth</i> ® ⁸⁸ wireless technology, Siri® Eyes Free, ⁹ HD Radio™ ¹⁰ Predictive Traffic and Doppler Weather overlay, and SiriusXM® Satellite Radio ¹² with 3-month All Access trial. ¹³ See toyota.com/entune for details.	—	—	S	S	—	—	S	—
Entune™ Premium JBL® ¹⁶ Audio with Integrated Navigation ¹⁴ and Entune® App Suite ¹⁵ — includes 8-in. high-resolution touch-screen with split-screen display, AM/FM cache radio, HD Radio™ ¹⁰ CD player, 12 JBL® ¹⁶ GreenEdge™ speakers including subwoofer amplifier, auxiliary port, USB 2.0 port ⁵ with iPod® ⁸⁶ connectivity and control, advanced voice recognition, ⁷ hands-free phone capability, phone book access and music streaming ⁸ via <i>Bluetooth</i> ® ⁸⁸ wireless technology, Siri® Eyes Free, ⁹ HD Radio™ ¹⁰ Predictive Traffic and Doppler Weather overlay, and SiriusXM® Satellite Radio ¹² with 3-month All Access trial. ¹³ See toyota.com/entune for details.	—	—	—	—	S	—	—	S
4.2-in. color LCD Multi-Information Display (MID) in meter cluster with odometer, current/average fuel economy, cruising range and ECO Driving Indicator	S	S	S	S	S	—	—	—
4.2-in. color LCD Multi-Information Display in meter cluster with odometer, current/average fuel economy, cruising range, average speed, AWD torque distribution (AWD gas models only), cruise control guide, navigation ¹⁴ with turn-by-turn directions, audio status, hands-free incoming call notices, telephone information, ECO Driving Indicator and energy monitor (hybrid models only)	—	—	—	—	—	S	S	S
Rear-seat Blu-ray Disc™ entertainment system with 9-in. display, RCA jacks, remote and two wireless headphones ¹⁷	—	—	O	O	—	—	O	O
Fabric-trimmed front- and second-row seats; 6-way adjustable driver's seat; 4-way adjustable front passenger seat; 60/40 split, sliding and reclining fold-flat second-row seats	S	—	—	—	—	S	—	—
Fabric- and SofTex®-trimmed front- and second-row seats; 8-way power-adjustable driver's seat including power thigh and lumbar support; 4-way adjustable front passenger seat; 60/40 split, sliding and reclining fold-flat second-row seats	—	S	—	—	—	—	—	—
Leather-trimmed front- and second-row seats; heated front seats; 8-way power-adjustable driver's seat including power thigh and lumbar support; 4-way power-adjustable front passenger seat; 60/40 split, sliding and reclining fold-flat second-row seats	—	—	O	—	—	—	S	—
Leather-trimmed front- and second-row seats; heated front seats; 8-way power-adjustable driver's seat including power thigh and lumbar support; 4-way power-adjustable front passenger seat; second-row captain's chairs with side table	—	—	S	S	—	—	—	—
Perforated leather-trimmed heated and ventilated front-row seats; 8-way power-adjustable driver's seat with memory function and power thigh and lumbar support; 4-way power-adjustable front passenger seat; perforated leather-trimmed second-row captain's chairs with side table	—	—	—	—	—	—	—	S
Perforated leather-trimmed heated and ventilated front-row seats; 8-way power-adjustable driver's seat with memory function and power thigh and lumbar support; 4-way power-adjustable front passenger seat; 60/40 split, sliding and reclining fold-flat second-row seats	—	—	—	—	O	—	—	—
Perforated leather-trimmed heated and ventilated front-row seats; 8-way power-adjustable driver's seat with memory function and power thigh and lumbar support; 4-way power-adjustable front passenger seat; heated second-row captain's chairs with side table	—	—	—	—	S	—	—	S
Perforated leather-trimmed heated and ventilated front-row seats; 8-way power-adjustable driver's seat with memory function and power thigh and lumbar support; 4-way power-adjustable front passenger seat; heated 60/40 split, sliding and reclining fold-flat second-row seats with heated outboard seats	—	—	—	—	O	—	—	O
Fabric-trimmed 60/40 split, fold-flat third-row seat with sliding headrests and recline function	S	—	—	—	—	S	—	—
Fabric- and SofTex®-trimmed 60/40 split, fold-flat third-row seat with sliding headrests and recline function	—	S	—	—	—	—	—	—
SofTex®-trimmed 60/40 split, fold-flat third-row seat with sliding headrests and recline function	—	—	S	S	S	—	S	S
Gated shift lever with knob, silver metallic shift bezel and LED indicator illumination	S	—	—	—	—	S	—	—
Gated shift lever with silver metallic/leather-trimmed knob, silver metallic shift bezel and LED indicator illumination	—	S	S	S	S	—	S	S
Tilt/telescopic 3-spoke steering wheel with metallic accents and audio, Multi-Information Display (MID), <i>Bluetooth</i> ® ⁸⁸ hands-free phone, voice-command and cruise controls	S	—	—	—	—	S	—	—
Leather-trimmed tilt/telescopic 3-spoke steering wheel with metallic accents and audio, Multi-Information Display (MID), <i>Bluetooth</i> ® ⁸⁸ hands-free phone, voice-command and cruise controls	—	S	—	—	—	—	—	—
Leather-trimmed tilt/telescopic 3-spoke steering wheel with metallic accents and audio, Multi-Information Display (MID), <i>Bluetooth</i> ® ⁸⁸ hands-free phone; voice-command, Dynamic Radar Cruise Control (DRCC) ¹⁸ and multimedia controls	—	—	S	S	S	—	S	S
Leather-trimmed heated tilt/telescopic 3-spoke steering wheel with metallic accents and audio, Multi-Information Display (MID), <i>Bluetooth</i> ® ⁸⁸ hands-free phone, and Dynamic Radar Cruise Control (DRCC) ¹⁸ and multimedia controls	—	—	—	—	O	—	—	O
Optitron instrumentation with blue-illuminated speedometer and tachometer and 4.2-in. color LCD Multi-Information Display (MID)	S	S	S	S	S	—	—	—
Optitron instrumentation with blue-illuminated speedometer and tachometer/hybrid system power meter (hybrid models only) and 4.2-in. color LCD Multi-Information Display (MID)	—	—	—	—	—	S	S	S
Soft-touch upper door trim with metallic accent, fabric-covered door armrest area with black interior door handles	S	—	—	—	—	S	—	—
Soft-touch upper door trim with metallic accent, leatherette-trimmed door armrest area with black interior door handles	—	S	—	—	—	—	—	—
Soft-touch upper door trim with metallic accent, leatherette-trimmed door armrest area with satin chrome interior door handles	—	—	S	—	—	—	S	—
Soft-touch upper door trim with technical pattern accent, leatherette-trimmed door armrest area with satin chrome interior door handles	—	—	—	S	—	—	—	—

FEATURES¹ (continued)

INTERIOR (continued)	LE	LE PLUS	XLE	SE	LIMITED	HYBRID LE	HYBRID XLE	HYBRID LIMITED
Soft-touch upper door trim with wood-grain accent, leatherette-trimmed door armrest area with satin chrome interior door handles	—	—	—	—	S	—	—	S
Blue LED ambient lighting on interior of front and rear doors and in-dash shelf	—	—	—	S	S	—	—	S
Remote keyless entry system with remote illuminated entry	S	S	—	—	—	—	—	—
Smart Key System ¹⁹ on front doors and liftgate with Push Button Start and remote keyless entry system with illuminated entry	—	—	S	S	S	S	S	S
Power windows with driver and front passenger auto up/down and jam protection	S	S	S	S	—	S	S	—
Power windows with auto up/down and jam protection in all positions	—	—	—	—	S	—	—	S
Rear liftgate window defogger	S	S	S	S	S	S	S	S
Power door locks with shift-linked automatic lock/unlock feature	S	S	S	S	S	S	S	S
Day/night rearview mirror	S	S	—	—	—	S	—	—
Auto-dimming rearview mirror	—	—	S	S	S	—	S	S
Overhead console with maplights, sunglasses storage and conversation mirror	S	S	—	—	—	S	—	—
Overhead console with maplights, sunglasses storage, conversation mirror and HomeLink ^{®20} universal transceiver	—	—	S	S	S	—	S	S
24.5-liter soft-touch roll-top center console with removable utility tray	S	S	S	S	S	S	S	S
Soft-touch in-dash shelf with easy cable management feature	S	S	S	S	S	S	S	S
Eight cup holders and four bottle holders	S	S	S	S	S	S	S	S
Dual sun visors with sliding function and illuminated vanity mirrors	S	S	S	S	S	S	S	S
Two 12V auxiliary power outlets (one front and one center console)	S	S	S	S	S	S	S	S
One 120V auxiliary AC power outlet (second row)	—	—	S	S	S	—	S	S
Five total USB ports ⁵ (three front and two second row)	S	S	S	S	S	S	S	S
Four cargo area tie-down cargo hooks	S	S	S	S	S	S	S	S
Cargo area lights	S	S	S	S	S	S	S	S
Front- and second-row-seat reading lights	S	S	S	S	S	S	S	S
Second-row retractable window sunshades	—	—	S	S	S	—	S	S
Rear cargo area tonneau cover	—	—	—	—	S	—	—	S
Digital clock	S	S	S	S	S	S	S	S
Driver Easy Speak — driver voice amplification	—	—	S	S	S	—	S	S
SAFETY/CONVENIENCE								
Toyota Safety Sense [™] P (TSS-P) ²¹ — Pre-Collision System ²² with Pedestrian Detection ²³ (PCS w/PD), Lane Departure Alert with Steering Assist (LDA w/SA) ²⁴ Automatic High Beams (AHB) ²⁵ and Dynamic Radar Cruise Control (DRCC) ¹⁸	S	S	S	S	S	S	S	S
 Star Safety System [™] — includes Enhanced Vehicle Stability Control (VSC) ²⁶ Traction Control (TRAC), Anti-lock Brake System (ABS), Electronic Brake-force Distribution (EBD), Brake Assist (BA) ²⁷ and Smart Stop Technology [®] (SST) ²⁸	S	S	S	S	S	—	—	—
 Star Safety System [™] — includes Electronically Controlled Braking (ECB), Vehicle Dynamics Integrated Management (VDIM) ²⁹ Enhanced Vehicle Stability Control (VSC) ²⁶ Traction Control (TRAC), Anti-lock Brake System (ABS), Electronic Brake-force Distribution (EBD), Brake Assist (BA) ²⁷ and Smart Stop Technology [®] (SST) ²⁸	—	—	—	—	—	S	S	S
Driver and front passenger Advanced Airbag System ³⁰	S	S	S	S	S	S	S	S
Driver and front passenger seat-mounted side airbags, driver knee airbag, front passenger seat-cushion airbag and all-row Roll-sensing Side Curtain Airbags (RSCA) ³⁰	S	S	S	S	S	S	S	S
Driver and front passenger Whiplash-Injury-Lessening (WIL) ³¹ seats	S	S	S	S	S	S	S	S
Driver and front passenger seatbelt warning sensor	S	S	S	S	S	S	S	S
3-point seatbelts for all seating positions; driver-side Emergency Locking Retractor (ELR) and Automatic/Emergency Locking Retractor (ALR/ELR) on all passenger belts	S	S	S	S	S	S	S	S
Adjustable front seatbelt shoulder anchors and driver and front passenger seatbelt pretensioners with force limiters	S	S	S	S	S	S	S	S
LATCH (Lower Anchors and Tethers for CHildren) includes lower anchors and tethers on outboard second-row seats and tether anchor on middle of second- and third-row seats	S	S	S	S	S	S	S	S
Child-protector rear door locks	S	S	S	S	S	S	S	S
Collapsible steering column	S	S	S	S	S	S	S	S
Front and rear energy-absorbing crumple zones and side-impact door beams	S	S	S	S	S	S	S	S
Energy-dissipating interior trim	S	S	S	S	S	S	S	S

See numbered footnotes in Disclosures section.

S = Standard O = Optional — = Not available P = Available as part of a package

FEATURES¹ (continued)

SAFETY/CONVENIENCE (continued)	LE	LE PLUS	XLE	SE	LIMITED	HYBRID LE	HYBRID XLE	HYBRID LIMITED
Tire Pressure Monitor System (TPMS) ³²	S	S	S	S	S	S	S	S
Hill Start Assist Control (HAC) ³³	S	S	S	S	S	S	S	S
Downhill Assist Control (DAC) ³⁴	O	O	O	O	O	—	—	—
Engine immobilizer ³⁵	S	S	—	—	—	S	—	—
Anti-theft system with alarm and engine immobilizer ³⁵	—	—	S	S	S	—	S	S
Safety Connect ^{®36} — includes Emergency Assistance, Stolen Vehicle Locator, Roadside Assistance and Automatic Collision Notification. Available by subscription. Complimentary one-year trial subscription.	—	—	—	—	S	—	—	—
Blind Spot Monitor (BSM) ² and Rear Cross-Traffic Alert (RCTA) ³⁷	—	—	S	S	S	—	S	S
Rear parking assist sonar ³⁸	—	—	—	—	S	—	—	S
Front and rear parking assist sonar ³⁸	—	—	—	—	O	—	—	O
Stop and Start Engine System (S&S) ³⁹	—	S	S	S	S	—	—	—
ToyotaCare ⁴⁰ featuring a no cost maintenance plan with roadside assistance ⁴¹	S	S	S	S	S	S	S	S
OPTIONS/PACKAGE								
OPTIONS								
Rear-seat Blu-ray Disc™ entertainment system with 9-in. display, RCA jacks, remote and two wireless headphones ¹⁷	—	—	O	O	O	O	O	O
Seating for eight; second-row bench	—	—	O	—	O	—	—	—
PACKAGE								
Platinum Package — includes panoramic moonroof, heated steering wheel, perforated leather heated second-row outboard seats, rain-sensing windshield wipers, Bird's Eye View Camera, ⁴ Dark Chromtec [®] 19-in. wheels	—	—	—	—	O	—	—	O

See numbered footnotes in Disclosures section.

S = Standard O = Optional — = Not available P = Available as part of a package

SPECIFICATIONS

MECHANICAL/PERFORMANCE	LE	LE PLUS	XLE	SE	LIMITED	HYBRID LE	HYBRID XLE	HYBRID LIMITED
ENGINE								
2.7-Liter 4-Cylinder Double Overhead Cam (DOHC) 16-Valve with Dual Variable Valve Timing with intelligence (VVT-i); 185 hp @ 5800 rpm, 184 lb.-ft. @ 4200 rpm	S	—	—	—	—	—	—	—
3.5-Liter V6 Double Overhead Cam (DOHC) 24-Valve direct-injection Atkinson-cycle-capable engine with VVT-iW (Variable Valve Timing-Intelligent Wide) intake and VVT-i (Variable Valve Timing with intelligence) exhaust; 295 hp @ 6600 rpm, 263 lb.-ft. @ 4700 rpm	O	—	—	—	—	—	—	—
3.5-Liter V6 Double Overhead Cam (DOHC) 24-Valve direct-injection Atkinson-cycle-capable engine with VVT-iW (Variable Valve Timing-Intelligent Wide) intake and VVT-i (Variable Valve Timing with intelligence) exhaust, and Stop and Start Engine System (S&S); ³⁹ 295 hp @ 6600 rpm, 263 lb.-ft. @ 4700 rpm	—	S	S	S	S	—	—	—
3.5-Liter V6 Double Overhead Cam (DOHC) 24-Valve direct-injection Atkinson-cycle-capable engine with VVT-iW (Variable Valve Timing-Intelligent Wide) intake and VVT-i (Variable Valve Timing with intelligence) exhaust; EV; ⁴² ECO and POWER Modes; 306 hybrid system net hp (228 kW)	—	—	—	—	—	S	S	S
EMISSION RATING								
Ultra Low Emission Vehicle II (ULEV II)	S	S	S	S	S	—	—	—
Super Ultra Low Emission Vehicle (SULEV) ⁴³	—	—	—	—	—	S	S	S
Evaporative Emission Certification — Zero Evaporation	—	—	—	—	—	S	S	S
ELECTRIC MOTORS (two, front and rear)								
Permanent magnet synchronous motors drive front and rear wheels	—	—	—	—	—	S	S	S
TRACTION BATTERY								
Sealed Nickel-Metal Hydride (Ni-MH)	—	—	—	—	—	S	S	S
TRANSMISSION								
6-speed Electronically Controlled automatic Transmission with intelligence (ECT-i), sequential shift mode and Snow Mode	S	—	—	—	—	—	—	—
Direct Shift-8AT, 8-speed Electronically Controlled automatic Transmission with intelligence (ECT-i) and sequential shift mode with Dynamic Rev Management, Snow Mode and uphill/downhill shift logic	O	S	S	S	S	—	—	—
Electronically controlled Continuously Variable Transmission (ECVT) with sequential shift mode	—	—	—	—	—	S	S	S
DRIVETRAIN								
Front-Wheel Drive (FWD)	S	S	S	S	S	—	—	—
Dynamic Torque-Control AWD system	O	O	O	O	O	—	—	—
Electronic On-Demand AWD system with intelligence (AWD-i)	—	—	—	—	—	S	S	S
BODY CONSTRUCTION								
Reinforced unibody	S	S	S	S	S	S	S	S
SUSPENSION								
Independent MacPherson strut front suspension; double-wishbone style multi-link rear suspension with front and rear stabilizer bars	S	S	S	—	S	S	S	S
Sport-tuned independent MacPherson strut front suspension; sport-tuned double-wishbone style multi-link rear suspension with front and rear stabilizer bars	—	—	—	S	—	—	—	—
STEERING								
Electric Power Steering (EPS); power-assisted rack-and-pinion	S	S	S	S	S	S	S	S
Turning circle diameter — curb to curb (ft.)	38.7	38.7	38.7	38.7	38.7	38.7	38.7	38.7
BRAKES								
Power-assisted ventilated 12.9-in. front disc brakes; solid 12.2-in. rear disc brakes and Star Safety System™	S	S	S	S	S	—	—	—
Power-assisted ventilated 12.9-in. front disc brakes; solid 12.2-in. rear disc brakes with Electronically Controlled Braking (ECB) system, integrated regenerative braking and Star Safety System™	—	—	—	—	—	S	S	S
DIMENSIONS								
EXTERIOR (in.)								
Overall length/width	192.5/75.8	192.5/75.8	192.5/75.8	192.5/75.8	192.5/75.8	192.5/75.8	192.5/75.8	192.5/75.8
Unloaded height (no antenna)	68.1	68.1	68.1	68.1	68.1	68.1	68.1	68.1
Coefficient of drag (Cd)	0.34	0.33	0.33	0.33	0.33	0.33	0.33	0.34
Wheelbase	109.8	109.8	109.8	109.8	109.8	109.8	109.8	109.8

See numbered footnotes in Disclosures section.

S = Standard O = Optional — = Not available P = Available as part of a package

DIMENSIONS (continued)	LE	LE PLUS	XLE	SE	LIMITED	HYBRID LE	HYBRID XLE	HYBRID LIMITED
EXTERIOR (in.) (continued)								
Track (front/rear) FWD	64.4/64.2	64.4/64.2	64.4/64.2	64.4/64.2	64.4/64.2	—	—	—
Track (front/rear) AWD	64.4/64.2	64.4/64.2	64.4/64.2	64.4/64.2	64.4/64.2	64.4/64.2	64.4/64.2	64.4/64.2
INTERIOR front/second-row/third-row seats (in.)								
Head room without moonroof	40.7/39.9/35.9	40.7/39.9/35.9	—	—	—	40.7/39.9/35.9	—	—
Head room with moonroof	—	—	39.5/39.6/35.9	39.5/39.6/35.9	39.5/39.6/35.9	—	39.5/39.6/35.9	39.5/39.6/35.9
Head room with panoramic moonroof	—	—	—	—	39.8/37.8/35.9	—	—	39.8/37.8/35.9
Shoulder room	59.3/59.6/55.0	59.3/59.6/55.0	59.3/59.0/55.0	59.3/59.6/55.0	59.3/59.0/55.0	59.3/59.6/55.0	59.3/59.6/55.0	59.3/59.0/55.0
Hip room	57.2/57.1/45.6	57.2/57.1/45.6	57.2/57.1/45.6	57.2/57.1/45.6	57.2/57.1/45.6	57.2/57.1/45.6	57.2/57.1/45.6	57.2/57.1/45.6
Leg room	44.2/38.4/27.7	44.2/38.4/27.7	44.2/38.4/27.7	44.2/38.4/27.7	44.2/38.4/27.7	44.2/38.4/27.7	44.2/38.4/27.7	44.2/38.4/26.7
OFF-HIGHWAY								
Approach/departure angle (degrees)	18.0/23.1	18.0/23.1	18.0/23.1	18.0/23.1	18.0/23.1	18.0/23.1	18.0/23.1	17.6/23.9
Ground clearance (in.)	8.0	8.0	8.0	8.0	8.0	8.0	8.0	8.0
WEIGHTS/CAPACITIES								
Curb weight (lb.)	4134	4244	4310	4310	4354	4398	4464	4861
Gross Vehicle Weight Rating (GVWR) (lb.)	5665	5840	5840	5840	5840	6000	6000	6270
EPA passenger volume (cu. ft.) without moonroof (front/second/third row)	61.7/52.8/30.4	61.7/52.8/30.4	—	—	—	61.7/52.8/30.4	—	—
EPA passenger volume (cu. ft.) with moonroof (front/second/third row)	—	—	59.9/51.9/30.4	59.9/51.9/30.4	69.9/51.9/30.4	—	59.9/51.9/29.3	59.9/51.9/29.3
EPA passenger volume (cu. ft.) with panoramic moonroof (front/second/third row)	—	—	—	—	60.4/49.6/30.4	—	—	60.4/49.6/29.3
Cargo volume (cu. ft.) ⁴⁴ behind front/second-row/third-row seats	83.7/42.3/13.8	83.7/42.3/13.8	83.2/42.3/13.8	83.7/42.3/13.8	83.2/42.3/13.8	83.7/42.3/13.8	83.7/42.3/13.8	83.2/42.3/13.8
Fuel tank (gal.)	19.2	19.2	19.2	19.2	19.2	17.2	17.2	17.2
Seating capacity (standard/optional)	8	8	7/8	7	7/8	8	8	7
TOWING								
Towing capacity (lb.) ⁴⁵	1500	5000	5000	5000	5000	3500	3500	3500
Heavy-duty radiator with engine oil cooler, 200-watt fan coupling, supplemental transmission oil cooler and 150-amp alternator	—	S	S	S	S	—	—	—
Heavy-duty radiator with engine oil cooler, 240-watt fan coupling and supplemental transmission oil cooler	—	—	—	—	—	S	S	S
TIRES								
TYPE								
All-Season steel-belted radials	S	S	S	S	S	S	S	S
Spare — temporary spare tire	S	S	S	S	S	S	S	S
MILEAGE ESTIMATES (mpg city/highway)⁴⁶								
4-cylinder FWD	20/24	—	—	—	—	—	—	—
V6 FWD	20/27	21/27	21/27	21/27	21/27	—	—	—
V6 AWD	19/26	20/27	20/26	20/26	20/26	—	—	—
Hybrid	—	—	—	—	—	30/28	29/27	29/27

CARS BUILT FOR THE WAY YOU LIVE

At Toyota, we build cars for how you live. From building advanced safety features designed to help prevent crashes to driving cross-country to understand how we can make your driving experience better, our work starts with understanding your needs. Building cars for how you live also means thinking about tomorrow — from fuel efficiency and environmental innovations, to things beyond cars, like a bicycle that you can control with your mind. And because what we learn building cars can help improve lives in other places, we do things like help communities rebuild their homes quickly after a disaster and work with soup kitchens to help them serve more people faster. Toyota. Built for how you live. Together we are going places.

DISCLOSURES

1. Toyota strives to build vehicles to match customer interest and thus they typically are built with popular options and option packages. Not all options/packages are available separately and some may not be available in all regions of the country. If you would prefer a vehicle with no or different options, contact your dealer to check for current availability or the possibility of placing a special order. 2. Do not rely exclusively on the Blind Spot Monitor. Always look over your shoulder and use your turn signal. There are limitations to the function, detection and range of the monitor. See *Owner's Manual* for additional limitations and details. 3. The backup camera does not provide a comprehensive view of the rear area of the vehicle. You should also look around outside your vehicle and use your mirrors to confirm rearward clearance. Environmental conditions may limit effectiveness and view may become obscured. See *Owner's Manual* for additional limitations and details. 4. The Bird's-Eye-View Camera does not provide a comprehensive view of the area surrounding the vehicle. You should also look around outside your vehicle and use your mirrors to confirm surrounding clearance. Environmental conditions may limit effectiveness and view may become obscured. See *Owner's Manual* for additional limitations and details. 5. May not be compatible with all mobile phones, MP3/WMA players and like models. 6. iPod® and iPhone® are registered trademarks of Apple Inc. All rights reserved. 7. Advanced voice recognition capabilities vary by head unit. 8. The Bluetooth® word mark and logos are registered trademarks owned by Bluetooth SIG, Inc., and any use of such marks by Toyota is under license. A compatible Bluetooth®-enabled phone must first be paired. Phone performance depends on software, coverage and carrier. 9. Always drive safely, obey traffic laws and focus on the road while driving. Siri® is available on select iPhone®/iPad® models and requires Internet access. Siri® is not available in all languages or all areas and features vary by area. Some Siri® functionality and commands are not accessible in the vehicle. Data charges may apply. See apple.com and phone carrier for details. Siri® is a registered trademark of Apple Inc. 10. HD Radio™ Technology manufactured under license from iBiquity Digital Corporation U.S. and Foreign Patents. HD Radio™ and the HD, HD Radio, and "Arc" logos are proprietary trademarks of iBiquity Digital Corp. 11. The Scout® GPS Link app is compatible with select vehicle models. Availability and accuracy of the information provided by Scout® GPS Link is subject to change at any time without notice and is dependent upon many factors, including smartphone connectivity, capability and cellular reception. Always use safe driving practices and follow all traffic rules. Data charges may apply. Scout® and Telenav® are registered trademarks of Telenav, Inc. 12. SiriusXM® audio services require a subscription sold separately by Sirius XM Radio Inc. If you decide to continue service after your trial, the subscription plan you choose will automatically renew thereafter and you will be charged according to your chosen payment method at then-current rates. Fees and taxes apply. To cancel, you must call SiriusXM at 1-866-635-2349. See SiriusXM Customer Agreement for complete terms at www.siriusxm.com. All fees and programming subject to change. Not all vehicles or devices are capable of receiving all services offered by SiriusXM. Current information and features may not be available in all locations, or on all receivers. ©2018 Sirius XM Radio Inc. SiriusXM and all related marks and logos are trademarks of Sirius XM Radio Inc. 13. Trial length and service availability may vary by model, model year or trim. 14. Availability and accuracy of the information provided by the navigation system is dependent upon many factors. Use common sense when relying on information provided. Services and programming subject to change. Services not available in every city or roadway. Updates may be available from your dealer at an additional cost. See *Owner's Manual* for details. 15. Be sure to obey traffic regulations and maintain awareness of road and traffic conditions at all times. Apps/services vary by phone/carrier; functionality depends on many factors. Select apps use large amounts of data; you are responsible for charges. Apps and services subject to change. See toyota.com/entune for details. 16. JBL® is a registered trademark of Harman International Industries, Incorporated. 17. Headphones are for passenger use only. Do not use while operating vehicle. 18. Dynamic Radar Cruise Control is designed to assist the driver and is not a substitute for safe and attentive driving practices. System effectiveness is dependent on many factors including road, weather and traffic conditions. See *Owner's Manual* for additional limitations and details. 19. The Smart Key System may interfere with some pacemakers or cardiac defibrillators. If you have one of these medical devices, please talk to your doctor to see if you should deactivate this system. 20. HomeLink® and the HomeLink® house icon are registered trademarks of Gentex Corporation. 21. Drivers are responsible for their own safe driving. Always pay attention to your surroundings and drive safely. System effectiveness is dependent on many factors including road, weather and vehicle conditions. See *Owner's Manual* for additional limitations and details. 22. The TSS Pre-Collision System is designed to help avoid or reduce the crash speed and damage in certain frontal collisions only. It is not a substitute for safe and attentive driving. System effectiveness is dependent on many factors including road, weather and vehicle conditions. See *Owner's Manual* for additional limitations and details. 23. The Pedestrian Detection system is designed to detect a pedestrian ahead of the vehicle, determine if impact is imminent and help reduce impact speed. It is not a substitute for safe and attentive driving. System effectiveness depends on many factors, such as speed, size and position of pedestrians, and weather, light and road conditions. See *Owner's Manual* for additional limitations and details. 24. Lane Departure Alert with Steering Assist is designed to read visible lane markers under certain conditions. It provides a visual and audible alert, and slight steering force when lane departure is detected. It is not a collision-avoidance system or a substitute for safe and attentive driving. Effectiveness is dependent on many factors including road, weather and vehicle conditions. See *Owner's Manual* for additional limitations and details. 25. Automatic High Beams operate at speeds above 25 mph. Factors such as a dirty windshield, weather, lighting and terrain limit effectiveness, requiring the driver to manually operate the high beams. See *Owner's Manual* for additional limitations and details. 26. Vehicle Stability Control is an electronic system designed to help the driver maintain vehicle control under adverse conditions. It is not a substitute for safe and attentive driving practices. Factors including speed, road conditions, weather and driver steering input can all affect whether VSC will be effective in preventing a loss of control. See *Owner's Manual* for additional limitations and details. 27. Brake Assist is designed to help the driver take full advantage of the benefits of ABS. It is not a substitute for safe driving practices. Braking effectiveness also depends on proper vehicle maintenance, and tire and road conditions. See *Owner's Manual* for additional limitations and details. 28. Smart Stop Technology® operates only in the event of certain contemporaneous brake and accelerator pedal applications. When engaged, the system will reduce power to help the brakes bring the vehicle to a stop. Factors including speed, road conditions and driver input can all impact stopping distance. Smart Stop Technology® is not a substitute for safe and attentive driving and does not guarantee instant stopping. See *Owner's Manual* for details. 29. Vehicle Dynamics Integrated Management (VDIM) is an electronic system designed to help the driver maintain vehicle control under adverse conditions. It is not a substitute for safe and attentive driving practices. Factors including speed, road conditions, weather and driver steering input can all affect whether VDIM will be effective in preventing a loss of control. See *Owner's Manual* for additional limitations and details. 30. All the airbag systems are Supplemental Restraint Systems. All airbags (if installed) are designed to inflate only under certain conditions and in certain types of severe collisions. To decrease the risk of injury from an inflating airbag, always wear seatbelts and sit upright in the middle of the seat as far back as possible. Do not put objects in front of an airbag or around the seatback. Do not use a rearward-facing child seat in any front passenger seat. See *Owner's Manual* for additional limitations and details. 31. Whiplash-Injury-Lessening front seats can help reduce the severity of whiplash injury in certain rear-end collisions. 32. The Tire Pressure Monitor System alerts the driver when tire pressure is critically low. For optimal tire wear and performance, tire pressure should be checked regularly with a gauge; do not rely solely on the monitor system. See *Owner's Manual* for details. 33. Hill Start Assist Control is designed to help minimize backward rolling on steep ascents. It is not a substitute for safe driving judgment and practices. Factors including speed, grade, surface conditions and driver input can all affect whether HAC will be effective in preventing a loss of control. See *Owner's Manual* for additional limitations and details. 34. Downhill Assist Control (DAC) is designed to help the driver maintain vehicle control and speed on steep, downhill descents. It is not a substitute for safe driving judgment and practices. Factors including speed, grade, surface conditions and driver input can all affect whether DAC will be effective in preventing a loss of control. See *Owner's Manual* for additional limitations and details. 35. The engine immobilizer is a state-of-the-art anti-theft system. When you insert your key into the ignition switch or bring a Smart Key fob into the vehicle, the key transmits an electronic code to the vehicle. The engine will only start if the code in the transponder chip inside the key/fob matches the code in the vehicle's immobilizer. Because the transponder chip is embedded in the key/fob, it can be costly to replace. If you lose a key or fob, your Toyota dealer can help. Alternatively, you can find a qualified independent locksmith to perform high-security key services by consulting your local Yellow Pages or by contacting www.aloa.org. 36. Toyota Entune™ services are dependent upon an operative telematics device, a cellular connection, and other factors outside of Toyota's control, which can limit the ability to reach the response center or receive emergency support or otherwise limit the functionality or availability of the system. Terms and conditions of subscription service agreement apply. To learn about Toyota Entune™'s data collection, use, sharing and retention, please visit <https://www.toyota.com/privacyvts/>. Stolen vehicle police report required to use Stolen Vehicle Locator. 37. Do not rely exclusively on the Rear Cross-Traffic Alert system. Always look over your shoulder and use your mirrors to confirm rear clearance. There are limitations to the function, detection and range of the system. See *Owner's Manual* for additional limitations and details. 38. Parking assist sonar is designed to assist drivers in avoiding potential collisions at speeds of 9 mph or less. Certain vehicle and environmental factors, including an object's shape and composition, may affect the ability of the parking assist sonar to detect it. Always look around outside the vehicle and use mirrors to confirm clearance. See *Owner's Manual* for additional limitations and details. 39. Before towing, confirm Stop and Start Engine System is disengaged (V6 gas models only). 40. ToyotaCare plan covers normal factory scheduled service for 2 years or 25K miles, whichever comes first. See Toyota dealer for details and exclusions. Valid only in the continental U.S. and Alaska. 41. Roadside Assistance coverage is 2 years unlimited mileage. Does not include parts and fluids, except emergency fuel delivery. See Toyota dealer for details and exclusions. Valid only in the continental U.S. and Alaska. 42. CAUTION! When driving a hybrid vehicle, pay special attention to the area around the vehicle. Because there is little vehicle noise in EV Mode, pedestrians, people riding bicycles or other people and vehicles in the area may not be aware of the vehicle starting off or approaching them, so take extra care while driving. EV Mode works under certain conditions at low speeds. See *Owner's Manual* for details. 43. Meets Tier 2/Bin 3 Federal emissions standard. 44. Cargo and load capacity limited by weight and distribution. 45. Before towing, confirm your vehicle and trailer are compatible, hooked up and loaded properly and that you have any necessary additional equipment. Do not exceed any Weight Ratings and follow all instructions in your *Owner's Manual*. The maximum you can tow depends on base curb weight plus the total weight of any cargo, occupants, and added vehicle equipment. "Added vehicle equipment" includes additional standard/optional equipment and accessories added by the manufacturer, dealers, and/or vehicle owners. The only way to be certain of your vehicle's exact curb weight is to weigh your vehicle without passengers or cargo. 46. 2018 EPA-estimated mileage. Actual mileage will vary. 47. Extra-cost color. 48. This floor mat was designed specifically for use in your model and model year vehicle and SHOULD NOT be used in any other vehicle. To avoid potential interference with pedal operation, each mat must be secured with its fasteners. Do not install a floor mat on top of an existing floor mat. 49. The Toyota Genuine Accessory Warranty will only apply when the installation is performed by a trained Toyota-approved installer. Please see dealer for details. 50. Use only if aware of circumstances surrounding the vehicle at time of start. Operate only when safe to do so (e.g., do not remotely start engine if vehicle is in an enclosed space). See *Owner's Manual* for limitations and details. 51. FWD models require purchase of Genuine Toyota Highlander mudguards at an additional cost. 52. Available only for vehicles equipped with factory security and factory remote keyless entry system or Smart Key System.

Toyota Highlander is designed to meet most off-road driving requirements. Abusive use may result in bodily harm or damage. Toyota encourages responsible operation to protect you, your vehicle and the environment. Seatbelts should be worn at all times. Please do not allow passengers to ride in the cargo area. Towing hitch receivers/ball mount kits are not intended to provide crash protection.

For details on vehicle specifications, standard features and available equipment in your area, contact your Toyota dealer. A vehicle with particular equipment may not be available at the dealership. Ask your Toyota dealer to help locate a specifically equipped vehicle. All information presented herein is based on data available at the time of posting, is subject to change without notice and pertains specifically to mainland U.S.A. vehicles only. Prototypes shown. Actual production vehicles may vary.

WARRANTIES

Every Toyota Car, Truck and SUV is built to exceptional standards. And that's not idle boasting. We back it up with these Limited Warranty Coverages:

Basic: 36 months/36,000 miles (all components other than normal wear and maintenance items).

Hybrid-Related Component Coverage: Hybrid-related components, including the HV battery, battery control module, hybrid control module and inverter with converter, are covered for 8 years/100,000 miles. The HV battery may have longer coverage under emissions warranty. Refer to applicable *Warranty and Maintenance Guide* for details.

Powertrain: 60 months/60,000 miles (engine, transmission/transaxle, drive system, seatbelts and airbags).

Rust-Through: 60 months/unlimited miles (corrosion perforation of sheet metal).

Emissions: Coverages vary under Federal and California regulations. Refer to applicable *Warranty and Maintenance Guide* for details.

Accessories: For Genuine Toyota Accessories purchased at the time of the new vehicle purchase, the Toyota Accessory Warranty coverage is in effect for 36 months/36,000 miles from the vehicle's in-service date, which is the same coverage as the Toyota New Vehicle Limited Warranty.

For Genuine Toyota Accessories purchased after the new vehicle purchase the coverage is 12 months, regardless of mileage, from the date the accessory was installed on the vehicle, or the remainder of any applicable new vehicle warranty, whichever provides greater coverage.

You may be eligible for transportation assistance if it's necessary that your vehicle be kept overnight for repairs covered under warranty. Please see your authorized Toyota dealership for further details.

For complete details about Toyota's warranties, please visit www.toyota.com, refer to the applicable *Warranty and Maintenance Guide* or see your Toyota dealer.



For Toyota Mobility program details, go to www.toyota.com/mobility or call the Toyota Customer Assistance Center at 1-800-331-4331

