

# REVIEW GUIDE

# MyMathLab

A fully digital program for more than 300 mathematics and statistics courses

# MATH YOUR WAY

A flexible online program with an interactive eText, auto-graded homework and assessment, and powerful course management tools

## What Teachers Are Saying

"MyMathLab has helped to motivate students, enhance student engagement, and increase the efficiency of class time. As a result, I am able to have students complete activities that require critical thinking and problem solving. These activities allow students to explore the math content at a deeper level using technology and collaboration. In the past, there was not time for such activities, because class time was wasted checking and reviewing homework."

- Beth McInnis,  
The Dunham School, LA

## With MyMathLab, all students can succeed.

Differentiate each student's learning experience to ensure success in math. With Pearson's *MyMathLab*, teachers have access to rich and flexible course materials that make it easy to manage and teach mathematics courses online. Students of all levels get personalized study plans, easy-to-use online homework, multimedia learning aids, and a full, interactive eText.

## How can I use MyMathLab?

*MyMathLab* is a fully digital online solution that can be used in any environment, including:

- Traditional classroom – with a basic projector or interactive whiteboard
- A computer lab – promotes peer-to-peer interaction and discussion
- Distance learning – provides a flexible course option for all students

With flexible resources, teachers and students are fully equipped for success. And success in math means success in college—and success in life.

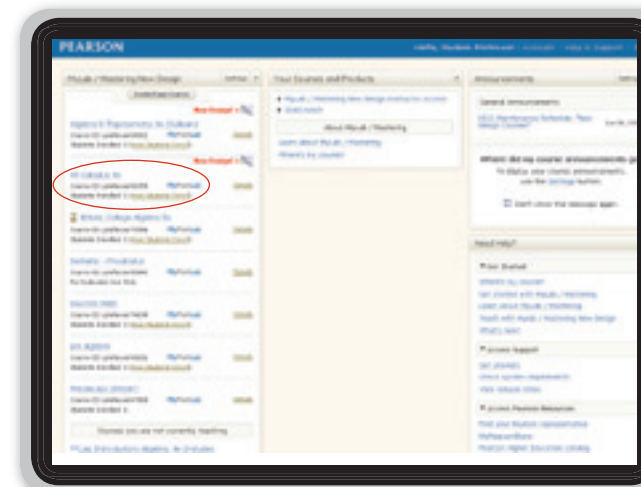


See a demo of *MyMathLab Algebra 1 and Algebra 2* by Elayn Martin-Gay at [pearsonschool.com/mml](http://pearsonschool.com/mml)

## A Click-by-Click Review Guide for MyMathLab

For demonstration purposes, *Calculus: Graphical, Numerical, Algebraic* 4th edition (Finney, Demana) is shown in this guide. The functionality of the program works the same for all 300+ courses in *MyMathLab*; however, the curriculum will differ.

The following pages demonstrate the new design of *MyMathLab* that is found on all new courses.



Your list of courses appears in the left-hand column. Choose the course you want to work in by clicking on the title. For this walkthrough, scroll down and click **AP Calculus 4e**.



Click on **Homework** in the left-hand navigation bar.

## GETTING STARTED

**Log on using the demo account:**

**MyMathLab.com**

**Login: gamath1**

**Password: gamathpw1**

On the account homepage, click on your desired course.

## Course Dashboard

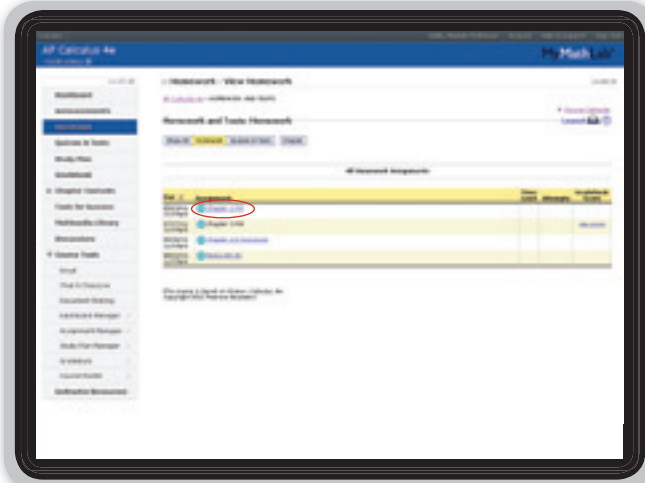
This is where the teacher can post announcements, including homework reminders and instructions for class projects.

NOTE: The Instructor Resources button in the left-hand navigation is viewable by teachers only; otherwise, the student view is identical.

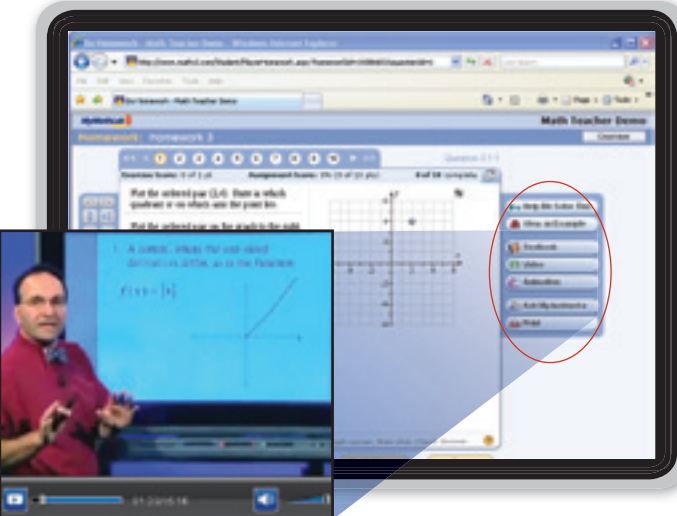
Next, click **Homework** in the left-hand navigation box.

MyMathLab





Click on a Homework Assignment.



Click Video to see accompanying media.



Click Create Assignment to begin creating a homework, quiz, or test.

(See p. 7 for more information on the Course Tools)

# HOMEWORK

This is where a student sees all homework, quizzes and tests that a teacher has assigned.

To see what a typical problem looks like, click on a Homework assignment and then click on a problem.

## Problem View

This is the view that students see when they do work in their personalized study plans (see below) or in a homework assignment. All problems have interactive learning aids:

- **Help Me Solve This** guides students through step-by-step solutions. Students then practice a similar problem with different values.
- **View an Example** shows students a similar example. Students follow along as a step-by-step solution is explained.
- The **Textbook** aid shows the supporting pages in the eText.

In addition, the **Videos**, **Animations**, and **Calculator** tabs are shown when available.

NOTE: The interactive learning aids can be individually and selectively turned off by the teacher as needed.

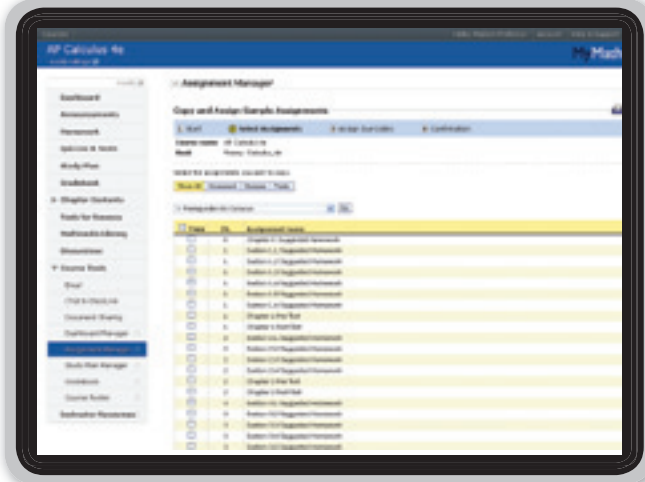
## Assignment Manager

This is where a teacher can create an assignment. In the left-hand navigation, click **Course Tools**, and a new menu will open. Click **Assignment Manager**.

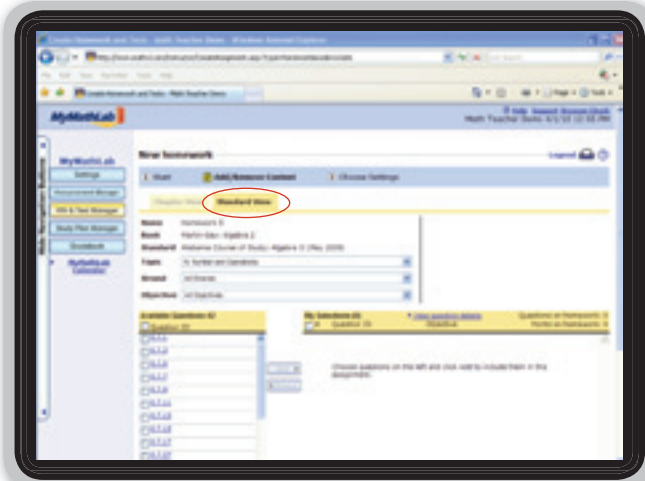
Click on the **Create Assignment** drop-down menu, select **Create Homework**, and follow the instructions to walk through the creation process.

Notice that in addition to homework, a teacher can create a quiz, test, or media aid assignment (e.g., video, animation).

On the Add/Remove Content screen, you can narrow down the number of problems available for each assignment, by using the chapter, section, and objective level filters.



From the **Create Assignment** dropdown, choose **Copy and Assign Sample Assignments** to see this complete list of pre-made homeworks and tests.



While creating an assignment, you can switch from Chapter View to **Standard View**.



Click **Study Plan** in the left-hand navigation.

# QUIZZES & TESTS

Teachers can create and assign their own tests or copy tests from the sample test bank to assign within **Assignment Manager**.

Test results drive the development of each student's personalized Study Plan. In addition, results of assigned tests can generate personalized homework based on each student's assigned test performance.

## Standards View (where available)

When creating an assignment, a teacher can view the course content in the context of how problems align to state standards.

Click on **Create an Assignment** and choose **Homework**. Name the homework assignment and click **Next**.

Follow the steps in the previous section to create an assignment. On the Add/Remove Content screen, at the top of the page there are two yellow tabs. Click on **Standard View** to create Homework, Quizzes, and Tests that are aligned to state standards\*.

\*Standards availability varies by state and course.

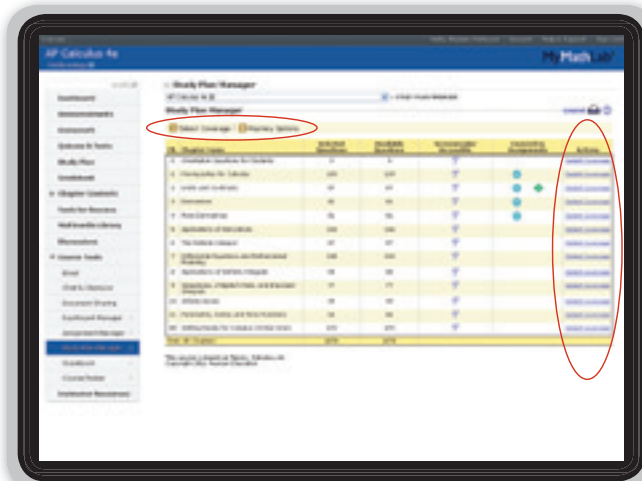
# STUDY PLAN

A student can independently work in the Study Plan for differentiated learning, practice, and review. The results of a pre-test populate a personalized study plan with the following icons:

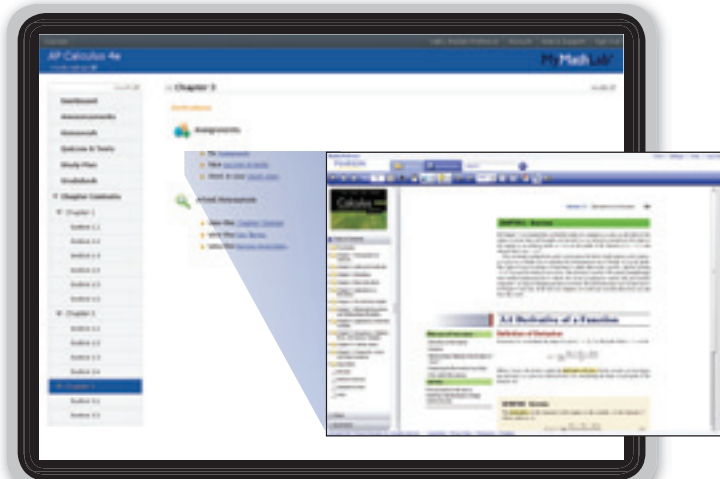
- A "needs more work" icon (🔧 or ⬅️) shows material the student needs to study.
- A "ready to retest" icon (🟢) indicates that the student answered all the practice questions correctly.
- A "mastery" icon (either 🏆 or 🌟) shows that the student has mastered the material.

NOTE: work in the Study Plan will be auto-graded and captured in the teacher **Gradebook**.

*Customizing Study Plan Coverage:*  
A teacher can customize the coverage of the Study Plan, if desired (see **Study Plan Manager** on page 6).



Under Course Tools, click **Study Plan Manager**. Click **Select Coverage** or **Mastery Options** to edit settings.



Click **Chapter Contents** in the left-hand navigation, and choose a chapter. Available resources are shown, including links to assigned work for this chapter and pages in the eText.



Click **Multimedia Library** to access available videos, animations, and more.

## Study Plan Manager

The Study Plan Manager allows the teacher to select the **topic coverage** of the course by turning content on or off, as desired. The number of problems that appear in the Study Plan in addition to a required **mastery level** for each topic can also be set (for example, a teacher can require 80% mastery to earn a graduation cap versus 100% mastery).

## eTEXT

The interactive eText, referred to in the left-hand navigation as **Chapter Contents**, includes the entire print textbook online. Within the eText, there are links directly to section-, objective-, and example-level videos, animations, and You Try It exercises. In addition, highlighting and note-taking tools ensure students remember key concepts.

## MULTIMEDIA LIBRARY

The Multimedia Library contains all videos, animations, PowerPoint® slides, and the eText in one convenient location.



**Chat & ClassLive** initiate conversations between your students.



Click on **Tools for Success** in the left-hand navigation.

Tools like the Graphing Calculator Reference card are available.



To share and upload Word documents, PDF files, or other types of files, click **Document Sharing** under Course Tools.

## COMMUNICATION

*MyMathLab* offers a variety of ways to communicate with your students online, including:

- Discussions – forum conversations between students and teachers.
- Chat & ClassLive – Chat allows students to discuss in a group together online while ClassLive is a synchronous online classroom that includes shared whiteboards, text messaging, record, and playback capabilities for a virtual classroom experience.
- Email – quickly and easily email the entire class, or select students or the teacher with a question.
- Document Sharing – upload outside documents, such as PDF files, images, word documents, and more, to share with the entire class.

## TOOLS FOR SUCCESS

On the Tools for Success page, students have access to the following resources. Note that resources per course vary and not all are available for each course.

- **Interactive Animation Activities**
- **Study Skills Builders Videos** that develop effective study habits.
- **English/Spanish Audio Glossary** of key mathematical concepts.
- **Study Cards** with summaries of key concepts in the eText.
- **Graphing Calculator Help** and Quick Reference guide.
- **Translating Word Problems Activities** aligned to the eText.

## COURSE TOOLS

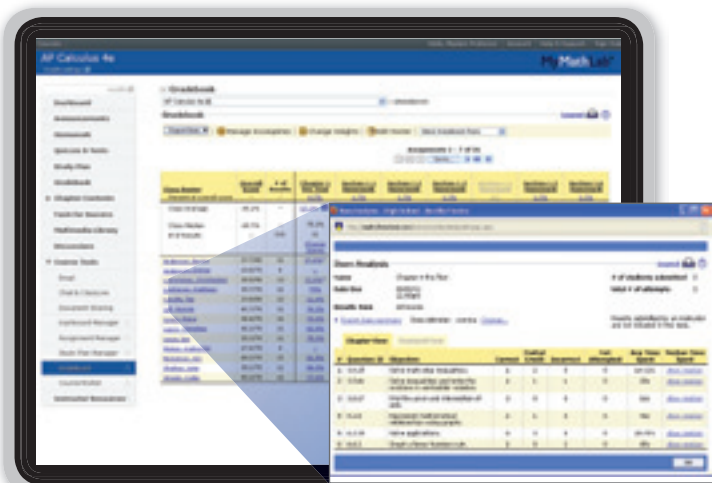
Both teachers and students have access to the Course Tools section, but students will only see the Communication buttons, such as Email, Chat & ClassLive, and Document Sharing.

For teachers, there are additional tools that allow them to manage the course, create assignments, update the dashboard, and more. The teacher buttons include:

- Dashboard Manager
- Assignment Manager
- Study Plan Manager
- Gradebook
- Course Roster

Click on the **Gradebook** link to view where student- and class-level data is automatically recorded.





Click on **Item Analysis** to see detailed assignment results.



The **Instructor Help Resources** link is a robust source of support including getting started guides, online search databases, and more.

## GRADEBOOK

The teacher's Gradebook shows how students are performing on each homework, quiz, or test, which are all auto-graded in *MyMathLab*. No more piles of ungraded homework!

The Gradebook details the areas of greatest difficulty, so you don't have to waste valuable class time on content areas that students already grasp. The teacher can view student- and class-level data, such as number of attempts and time spent on each problem. This is also where the teacher can see Study Plan progress for each student.

## Instructor Resources

At the bottom of the left-hand navigation, you will find **Instructor Resources**. Examples of these resources are below, but available resources vary by course.

### PowerPoint® Lecture Slides

Presentations cover key concepts and definitions from each section of the eText, including Active Learning Questions.

### Instructor's Solutions Manual

Features solutions to selected exercises in the interactive eText.

### Online Exercise Listing

Shows the exercises available to assign using the Homework/Test Manager.

### How Do I Get Started with MyMathLab?

Provides tips to help teachers get up and running with *MyMathLab*.

## Need more information?

Visit [PearsonSchool.com/MML](http://PearsonSchool.com/MML) for implementation models, user testimonials, and efficacy results.

**PearsonSchool.com**  
**800-848-9500**

International customers: visit  
[PearsonGlobalSchools.com](http://PearsonGlobalSchools.com)

Copyright Pearson Education, Inc., or its affiliates. All rights reserved.

ADV: 978-0-133-21968-5

## Ordering Information

### Printed Access Cards

978-0-321-19992-8	Teacher Access Card	FREE
978-0-321-19991-1	Single Student Access Card	\$49.97
978-0-13-260135-1	Student Access 6 years	\$124.97

### Digitally-Delivered Access Codes

(MUST place an order at [k12oasis.pearson.com](http://k12oasis.pearson.com))

978-0-13-296218-6	Teacher Access Code	FREE
978-0-132-96237-7	Single Student Access Code	\$49.97
978-0-13-296239-1	Student Access 6 years	\$124.97