



NETWRIX ACTIVE DIRECTORY CHANGE REPORTER

QUICK-START GUIDE

Product Version: 7.2

January 2013

Legal Notice

The information in this publication is furnished for information use only, and does not constitute a commitment from NetWrix Corporation of any features or functions discussed. NetWrix Corporation assumes no responsibility or liability for the accuracy of the information presented, which is subject to change without notice.

NetWrix is a registered trademark of NetWrix Corporation. The NetWrix logo and all other NetWrix product or service names and slogans are registered trademarks or trademarks of NetWrix Corporation. Active Directory is a trademark of Microsoft Corporation. All other trademarks and registered trademarks are property of their respective owners.

Disclaimers

This document may contain information regarding the use and installation of non-NetWrix products. Please note that this information is provided as a courtesy to assist you. While NetWrix tries to ensure that this information accurately reflects the information provided by the supplier, please refer to the materials provided with any non-NetWrix product and contact the supplier for confirmation. NetWrix Corporation assumes no responsibility or liability for incorrect or incomplete information provided about non-NetWrix products.

© 2012 NetWrix Corporation.

All rights reserved.

Table of Contents

1. INTRODUCTION	4
1.1. Overview	4
1.2. How This Guide is Organized	4
1.3. Free Pre-Sales Support	4
2. PRODUCT OVERVIEW	5
2.1. Key Features and Benefits	5
2.2. Product Workflow	6
2.3. Product Editions.....	8
3. INSTALLING NETWRIX ACTIVE DIRECTORY CHANGE REPORTER	9
3.1. Installation Prerequisites	9
3.1.1. Hardware Requirements	9
3.1.2. Software Requirements	9
3.1.3. Supported Environments	9
3.2. Installing NetWrix Active Directory Change Reporter	10
4. CONFIGURING TARGET AD DOMAIN	11
5. CONFIGURING MANAGED OBJECT	14
6. COLLECTING THE INITIAL SNAPSHOT	20
7. MONITORING YOUR TARGET DOMAIN FOR CHANGES.....	21
7.1. Making Test Changes.....	21
7.2. Receiving a Change Summary	21
A APPENDIX: RELATED DOCUMENTATION.....	23

1. INTRODUCTION

1.1. Overview

This guide is intended for the first-time users of NetWrix Active Directory Change Reporter. It can be used for evaluation purposes, therefore, it is recommended to read it sequentially, and follow the instructions in the order they are provided. After reading this guide you will be able to:

- Install and configure NetWrix Active Directory Change Reporter
- Create a Managed Object
- Run data collection
- See how changes to the monitored Active Directory domain are reported.

Note: This guide only covers simple installation and configuration options. For advanced installation scenarios and configuration options, as well as for information on various reporting possibilities and advanced product features, refer to [NetWrix Active Directory Change Reporter Administrator's Guide](#).

1.2. How This Guide is Organized

This section explains how this guide is organized and provides a brief overview of each chapter.

- Chapter [1 Introduction](#): the current chapter. It explains the purpose of this document, defines its audience and explains its structure.
- Chapter [2 Product Overview](#) provides an overview of the NetWrix Active Directory Change Reporter functionality, lists its main features and benefits, and explains the product workflow. It also contains the information on the product editions and a side-by-side comparison of their features.
- Chapter [3 Installing NetWrix Active Directory Change Reporter](#) lists all hardware and software requirements for the NetWrix Active Directory Change Reporter installation and explains how to setup the product.
- Chapter [4 Configuring Target](#) explains how to adjust audit settings in your target AD domain and prepare it for monitoring.
- Chapter [5 Configuring Managed Object](#) explains how to configure a Managed Object, i.e. an AD domain that you monitor for changes.
- Chapter [6 Collecting the Initial Snapshot](#) explains how to run data collection to perform the initial analysis of your domain current state.
- Chapter [7 Monitoring Your Target Domain for Changes](#) provides instructions on how to make test changes to the monitored domain and see how they are reported by the product.
- [A Appendix: Related Documentation](#) contains a list of all documents published to support NetWrix Active Directory Change Reporter.

1.3. Free Pre-Sales Support

You are eligible for free technical support during the evaluation period of all NetWrix products. If you encounter any problems, or would like assistance with the installation, configuration or implementation of NetWrix Active Directory Change Reporter, [contact NetWrix support specialists](#).

2. PRODUCT OVERVIEW

Microsoft Active Directory change auditing has become a mission-critical activity in business networks. Unauthorized changes and errors in Active Directory configuration can put your organization at risk introducing security breaches and compliance issues. Native Active Directory auditing is often inadequate when it comes to supporting such business needs as troubleshooting, security auditing, change monitoring, and reporting, many of which are driven by the necessity for organizations to comply with external industry and legislative requirements.

NetWrix Active Directory Change Reporter fills this functional gap by tracking all additions, deletions, and modifications made to Active Directory users, groups, computers, OUs, group memberships, permissions, domain trusts, AD sites, FSMO roles, AD schema, Group Policy and Exchange objects, settings and permissions.

The product collects data on changes made to the monitored Active Directory domain and generates audit reports showing the before and after values for WHO changed WHAT, WHEN and WHERE in a human-readable format without the overhead of resolving complicated native identifiers.

NetWrix offers long-term data archiving that uses a two-tiered system:

- Audit Archive, a local file-based storage
- SQL Server database

NetWrix offers both agent-based and agentless data collection methods. The use of agents is recommended for distributed deployments or multi-site networks due to their ability to compress network traffic.

NetWrix Active Directory Change Reporter employs [AuditAssurance™](#), a patent-pending technology that does not have the disadvantages of native auditing or SIEM (security Information and Event Management) solutions that rely on a single source of audit data. The AuditAssurance™ technology consolidates audit data from multiple independent sources (event logs, configuration snapshots, change history records, etc.), and, therefore, can detect a change even if one or several sources of information do not contain all of the required data (e.g. because it was deleted, overwritten, etc.). The AuditAssurance™ technology always ensures you get a complete and concise picture of what changes take place in your monitored environment.

NetWrix Active Directory Change Reporter can be purchased separately, but it is also available as part of a larger change reporter pack which automates auditing of the entire Active Directory infrastructure. The NetWrix Active Directory Change Reporter installation pack consists of the following modules:

- NetWrix Active Directory Change Reporter
- NetWrix Group Policy Change Reporter
- NetWrix Exchange Change Reporter

Note: This guide only covers the evaluation procedures for the NetWrix Active Directory Change Reporter module. For instructions on how to start using NetWrix Group Policy Change Reporter and NetWrix Exchange Change Reporter, refer to [NetWrix Group Policy Change Reporter Quick-Start Guide](#) and [NetWrix Exchange Change Reporter Quick-Start Guide](#) respectively.

2.1. Key Features and Benefits

NetWrix Active Directory Change Reporter is a tool for automated auditing and reporting on changes to the monitored Active Directory environment. It allows you to do the following:

- **Monitor day-to-day administrative activities:** the product captures detailed information on all changes made to the monitored Active Directory environment, including the information on WHO changed WHAT, WHEN and WHERE. Audit reports and real-time email notifications facilitate review of daily activities.
- **Sustain compliance** by using in-depth change information. Audit data can be archived and stored for more than 7 years to be used for reports generation.
- **Streamline change control:** the integrated Active Directory Object Restore tool streamlines the restore of any undesired or potentially harmful changes to your Active Directory environment.
- **Integrate with SIEM systems:** the product can be integrated with multiple SIEM systems, including RSA enVision®, ArcSight® Logger™, Novell® Sentinel™, NetIQ® Security Manager™, IBM Tivoli® Security Information and Event Manager™ and more. The product can also be configured to feed data to Microsoft System Center Operations Manager, thus providing organizations that use SCOM with fully automated Active Directory auditing and helping protect these investments.

The main NetWrix Active Directory Change Reporter features are:

- **Reports** with the previous and current values for every object- and attribute-level change. Reports are based on SQL Server Reporting Services (SSRS) with over 70 predefined report templates and support for custom reports.
- **Real-time alerts:** email notifications triggered by certain events and sent immediately after they have been detected.
- **Report subscriptions** allow for scheduled report generation and delivery to the specified recipients. You can apply different report filters and select report output format.
- **Snapshot reports:** reports on the current or historical configuration state of your Active Directory environment.
- **Rollback of changes:** the product supports rollback of unwanted changes, down to individual attribute-level changes.
- **Long-term data storage:** allows for recreating the full audit trail of changes made to the monitored Active Directory environment and provides historical reporting for any specified period of time. Organizations can analyze any policy violations which occurred in the past, and maintain ongoing compliance with internal and external regulations.
- **Group Policy and Exchange change auditing:** the Group Policy and Exchange auditing features allow tracking all changes to Group Policy Objects, security policy violations, changes to permissions and more. These are realized through the [NetWrix Group Policy Change Reporter](#) module and the [NetWrix Exchange Change Reporter](#) module respectively.

2.2. Product Workflow

A typical NetWrix Active Directory Change Reporter data collection and reporting workflow is as follows:

1. An administrator configures Managed Objects and sets the parameters for automated data collection and reporting.
2. NetWrix Active Directory Change Reporter monitors AD domains and collects audit data on changes and AD configuration snapshots. Audit data is written to a local file-based storage, referred to as the Audit Archive.

3. If an event is detected that triggers an alert, an email notification is sent immediately to the specified recipients.
4. The product emails Change Summaries to the specified recipients daily at 3:00 AM by default.
5. If the Reports functionality is enabled and configured, data is imported from the Audit Archive to a dedicated SQL database. Reports based on audit data can be viewed via NetWrix Enterprise Management Console or in a web browser.

2.3. Product Editions

NetWrix Active Directory Change Reporter is available in two editions: Freeware and Enterprise. The Freeware Edition can be used by companies or individuals for an unlimited period of time. The Enterprise Edition can be evaluated free of charge for 20 days.

Note: Licenses for different modules of the NetWrix Active Directory Change Reporter pack (i.e. NetWrix Active Directory Change Reporter, NetWrix Group Policy Change Reporter and NetWrix Exchange Change Reporter) have to be purchased separately.

[Table 1:](#) below outlines the differences between the NetWrix Active Directory Change Reporter editions:

Table 1: NetWrix Active Directory Change Reporter Editions

Feature	Freeware Edition	Enterprise Edition
WHO, WHEN and WHERE fields for every change	No	Yes
The before and after values for every change	No	Yes
SSRS-based Reports, with filtering, grouping and sorting, and dozens of predefined report templates	No	Yes
Custom reports	No	Yes Create manually or order from NetWrix
Predefined reports for SOX, HIPAA, GLBA, and FISMA compliance	No	Yes
Real-Time Alerts	No	Yes
Report Subscriptions	No	Yes
AD Snapshot Reports	No	Yes
Integration with Microsoft System Center Operations Manager Pack (SCOM) (via NetWrix SCOM Management Pack for Active Directory Change Reporter)	No	Yes
Long-term archiving of audit data	No Data is only stored for 4 days	Yes Any period of time
Daily Change Summary email reflecting the changes made in the last 24 hours	Yes	Yes
A single installation handles multiple Managed Objects, each with its own individual settings	No	Yes
Integrated interface for all NetWrix products, which provides centralized configuration and settings management	No	Yes
Reports can be viewed directly from NetWrix Enterprise Management Console	No	Yes
Technical Support	Support Forum Knowledge Base	Full range of options: Phone, email, submission of support tickets , Support Forum , Knowledge Base
Licensing	Free of charge	Per server Request a quote

3. INSTALLING NETWRIX ACTIVE DIRECTORY CHANGE REPORTER

3.1. Installation Prerequisites

NetWrix Active Directory Change Reporter can be installed on any computer in the monitored domain, or in a trusted domain.

3.1.1. Hardware Requirements

Before installing NetWrix Active Directory Change Reporter, make sure that your hardware meets the following requirements:

Table 2: Active Directory Change Reporter Hardware Requirements

Hardware Component	Minimum	Recommended
Processor	Intel or AMD 32 bit, 2GHz	Intel Core 2 Duo 2x 64 bit, 2GHz
Memory	512MB RAM	4GB RAM
Disk space	<ul style="list-style-type: none">50MB physical disk space for product installation.Additional space is required for the Audit Archive and depends on the number of AD objects and changes per day.	Two physical drives with a total of 50GB free space

3.1.2. Software Requirements

This section lists the minimum software requirements for NetWrix Active Directory Change Reporter. Make sure that this software has been installed before proceeding with the installation.

Table 3: Active Directory Change Reporter Software Requirements

Component	Requirement
Operating System	<ul style="list-style-type: none">Windows XP SP2 (both 32-bit and 64-bit systems) and above
Additional software	<ul style="list-style-type: none">.NET Framework 2.0, 3.0 or 3.5Windows Installer 3.1 or laterMicrosoft Management Console 3.0 or later

3.1.3. Supported Environments

This section lists the requirements to the monitored domain:

- Active Directory (domain and forest functional levels)
- Domain controller OS versions:
 - o Windows Server 2000 SP4
 - o Windows Server 2003 SP2
 - o Windows Server 2003 R2 SP2
 - o Windows Server 2008 SP2

- o Windows Server 2008 R2 SP1
- o Windows Server 2012

3.2. Installing NetWrix Active Directory Change Reporter

Procedure 1. To install NetWrix Active Directory Change Reporter

1. [Download](#) NetWrix Active Directory Change Reporter.
2. Run the setup package called adcrfull_setup.msi.
3. Follow the instructions of the installation wizard. When prompted, accept the license agreement and specify the installation folder.
4. On the last step, click **Finish** to complete the installation.

Shortcuts of all products forming the NetWrix Active Directory Change Reporter pack will be added to your **Start** menu.

Note: NetWrix Active Directory Change Reporter runs as a scheduled task, therefore it is not necessary to keep the program open once it has been configured.

4. CONFIGURING TARGET AD DOMAIN

Successful change monitoring requires a certain configuration of the audit settings in the monitored Active Directory domain. If audit is not configured properly, your change reports may contain errors and incomplete audit data. For example, you can receive a report containing the “System” value instead of an account name in the “Who changed” column.

Therefore, you need to verify and, if necessary, adjust your audit settings prior to using NetWrix Active Directory Change Reporter. You can configure audit automatically through the Active Directory Audit Configuration Wizard. If you wish to configure audit manually, refer to [NetWrix Active Directory Change Reporter Installation and Configuration Guide](#) for detailed step-by-step instructions.

Procedure 2. To configure target AD domain automatically

1. Launch the Active Directory Audit Configuration wizard (Start → All Programs → NetWrix → Active Directory Change Reporter → Active Directory Audit Configuration Wizard).

Note: For the wizard to work properly, you must run it under a Domain admin or an Enterprise admin account.

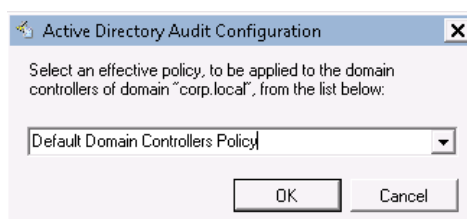
2. On the first step of the wizard, specify the name of the domain where you want to configure audit settings:

Figure 1: Audit Configuration Wizard: Select the Domain



3. Click **Next**. In the dialog that appears, select the effective policy that is currently applied to the domain controllers and that is subject to change and click **OK**:

Figure 2: Audit Configuration Wizard: Select the Effective Policy



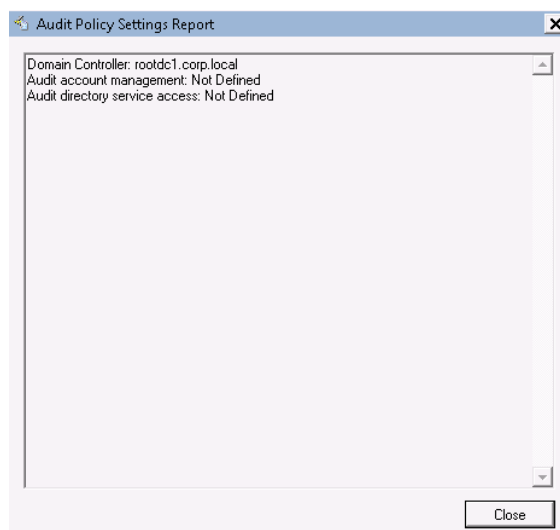
4. On the next step, specify the account that will be used by the product to collect data from the monitored domain.

Figure 3: Audit Configuration Wizard: Specify the Data Processing Account



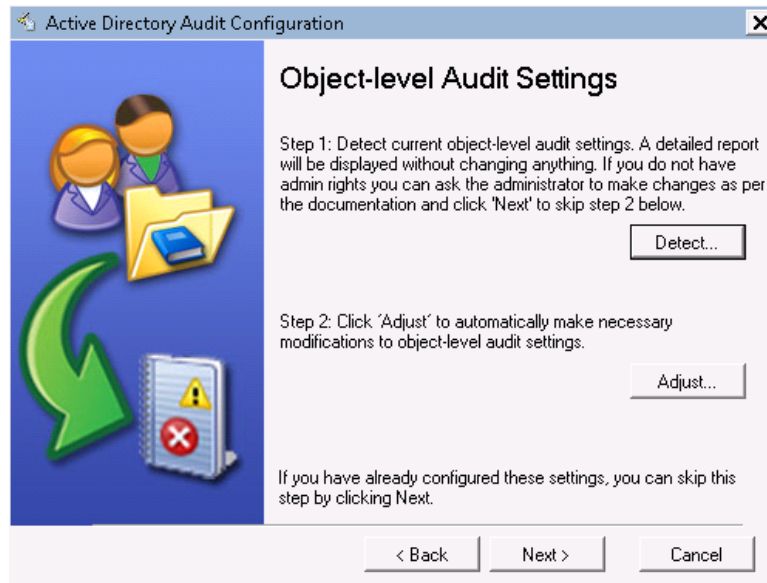
5. Click the **Detect** button. A report will be displayed showing your current audit policy settings in the monitored domain as in the example below:

Figure 4: Audit Policy Settings Report



6. Click the **Adjust** button. Your audit policy settings and the Data Processing Account permissions will be adjusted automatically.
7. On the next step, repeat these operations for the object-level audit settings. Object-level auditing must be configured so that the “Who” and “When” information appears in audit reports:

Figure 5: Audit Configuration Wizard: Adjust the Object-Level Audit Settings



8. On the next step, repeat these operations for your Security event log retention settings. On clicking the **Adjust** button, the size of your Security event log will be set to 300 MB, and the event log auto backup will be enabled if needed:

Figure 6: Audit Configuration Wizard: Adjust the Event Log Retention Settings



9. Skip the **Exchange Server Administrator Audit Logging Settings** step of the wizard (it is only required to adjust this settings for the NetWrix Exchange Change Reporter Module if the monitored AD domain has an Exchange organization running Microsoft Exchange Server 2010).
10. On the last step, review your settings and exit the wizard.

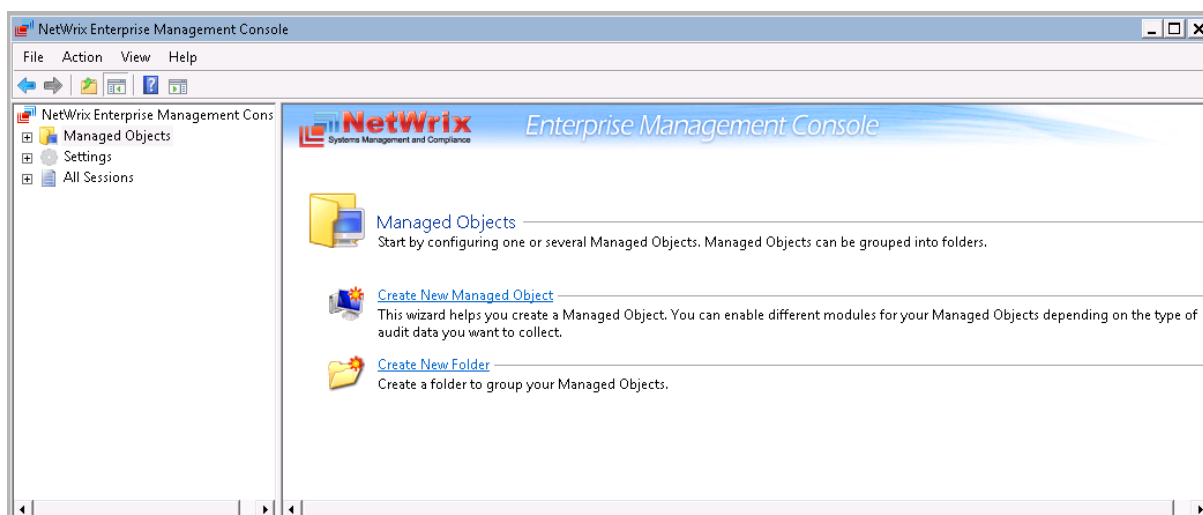
5. CONFIGURING MANAGED OBJECT

In NetWrix Active Directory Change Reporter, a Managed Object is an Active Directory domain that is monitored for changes.

Procedure 3. To create and configure a Managed Object

1. In NetWrix Enterprise Management Console, select the **Managed Objects** node in the left pane. The Managed Objects page will be displayed:

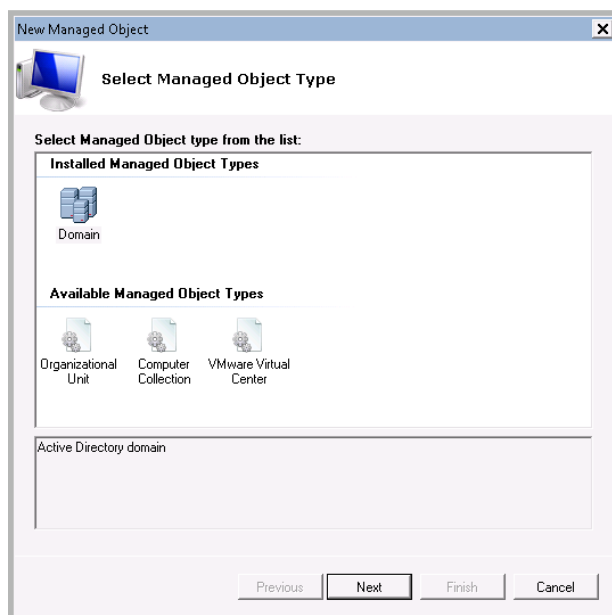
Figure 7: Managed Objects Page



2. Click **Create New Managed Object** in the right pane, or right-click the **Managed Objects** node and select **New Managed Object** from the popup menu to start the New Managed Object wizard.
3. On the **Select Managed Object Type** step, select **Domain** as the Managed Object type and click **Next**.

Note: If you have installed other NetWrix change reporting products before, the list of Managed Object types may contain several options.

Figure 8: New Managed Object: Select Managed Object Type



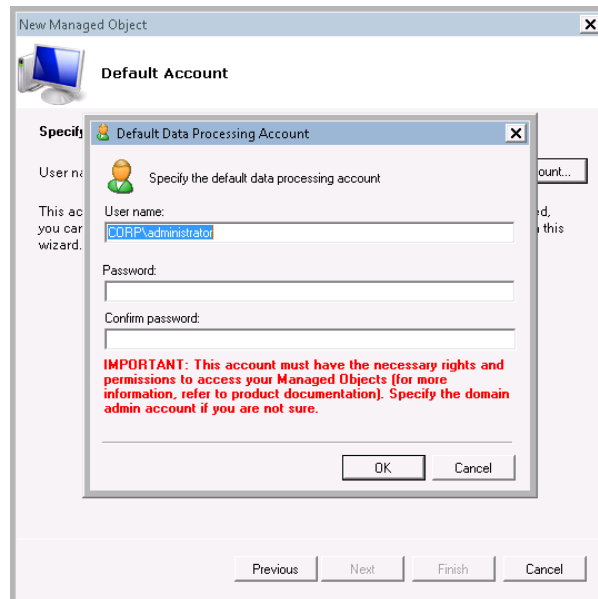
4. On the **Default Account** step, click the **Specify Account** button.

Note: If you have installed and configured other NetWrix change reporting products before, the **Default Account** and **Configure Email Settings** steps of the wizard will be omitted.

In the dialog that opens, enter the default Data Processing Account (in the domain_name\account_name format) that will be used by NetWrix Active Directory Change Reporter for data collection.

Note: This must be the same account you specified when configuring audit as described in [Procedure 2 To configure target AD domain automatically](#).

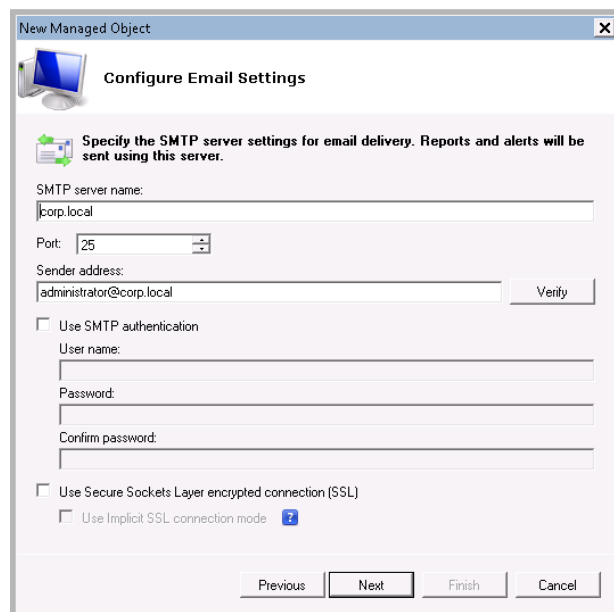
Figure 9: New Managed Object: Default Account



Click **OK** to continue and then **Next**.

5. On the **Configure Email Settings** step, specify the email settings that will be used for Change Summary delivery:

Figure 10: New Managed Object: Configure Email Settings



The following parameters must be specified:

Table 4: Email Settings Parameters

Parameter	Description
SMTP server name	Enter your SMTP server name.
Port	Specify your SMTP server port number.
Sender address	Enter the address that will appear in the 'From' field in Reports and Change Summaries. To check the email address, click Verify . The system will send a test message to the specified address and will inform you if any problems are detected.
Use SMTP authentication	Select this check box if your mail server requires the SMTP authentication.
User name	Enter a user name for the SMTP authentication.
Password	Enter a password for the SMTP authentication.
Confirm password	Confirm the password.
Use Secure Sockets Layer encrypted connection (SSL)	Select this checkbox if your SMTP server requires SSL to be enabled.
Use Implicit SSL connection mode	Select this checkbox if the implicit SSL mode is used, which means that an SSL connection is established before any meaningful data is sent.

- On the **Specify Domain Name** step, specify your domain name in the FQDN format:

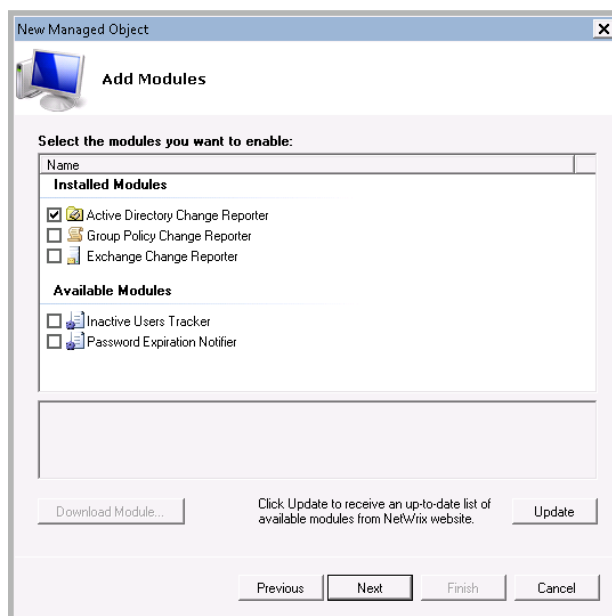
Figure 11: New Managed Object: Specify Domain Name

The screenshot shows a Windows-style dialog box titled "New Managed Object" with a sub-header "Specify Domain Name". It contains a "Domain name:" label and a text input field containing "corp.local". Below this is a section titled "Data Processing Account" with a note: "All operations with this Managed Object will be performed under this account. Make sure that it has the necessary rights and permissions." There are two radio button options: "Default (CORP\administrator)" which is selected, and "Custom". Below the "Custom" option are "User name:" and "Password:" labels with corresponding text input fields. At the bottom of the dialog are four buttons: "Previous", "Next", "Finish", and "Cancel".

Make sure that the **Default** option is selected under **Data Processing Account** and click **Next** to continue.

- On the **Add Modules** step, make sure that the Active Directory Change Reporter module is selected under **Installed Modules**:

Figure 12: New Managed Object: Add Modules

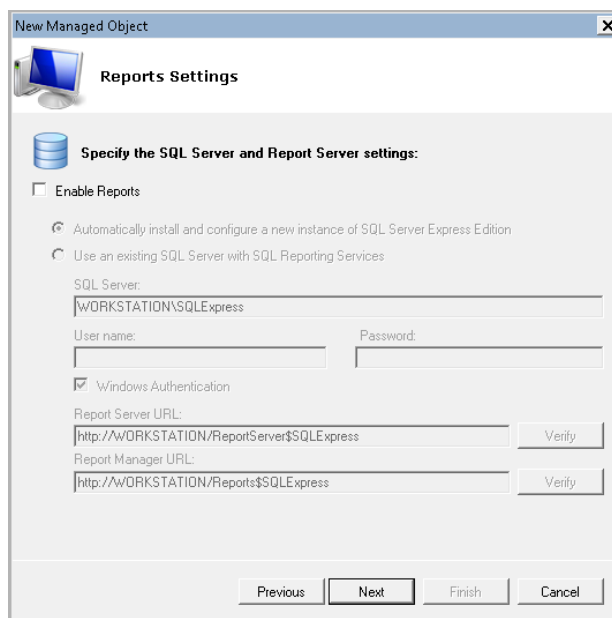


Note: If you have installed other NetWrix change reporting products before, the list of **Installed Modules** may contain several options.

On this step, under **Available Modules**, there is a list of other NetWrix products that can have domains as a Managed Object type. To get more information on these products and download them, select the corresponding checkbox, or click a module and then click the **Download Module** button. You will be redirected to the product website page.

8. On the **Reports Settings** step, deselect the **Enable Reports** checkbox:

Figure 13: New Managed Object: Reports Settings



Note: The Reports functionality is not covered in this guide, as it only touches upon the basic product features. For instructions on how to configure and view SSRS-based reports, refer to [NetWrix Active Directory Change Reporter Administrator's Guide](#).

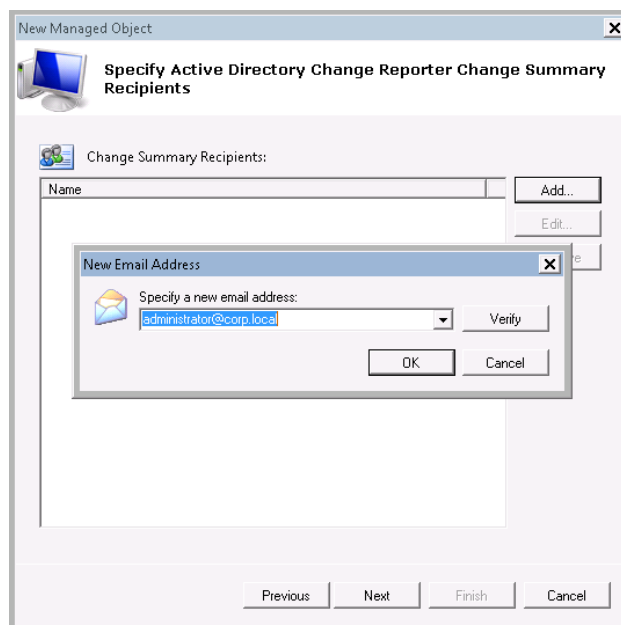
9. On the **Network Traffic Compression** step you can enable the **Network Traffic Compression** option. If this feature is enabled, an agent will be installed automatically on domain controllers in the target domain that will collect and pre-filter data and return it in a highly compressed format. This significantly improves data transfer and minimizes the impact on target computers performance.

Figure 14: New Managed Object: Network Traffic Compression



10. On the **Specify Active Directory Change Reporter Change Summary Recipients** step, click the **Add** button to specify the Change Summary recipient(s):

Figure 15: New Managed Object: Specify Change Summary Recipients

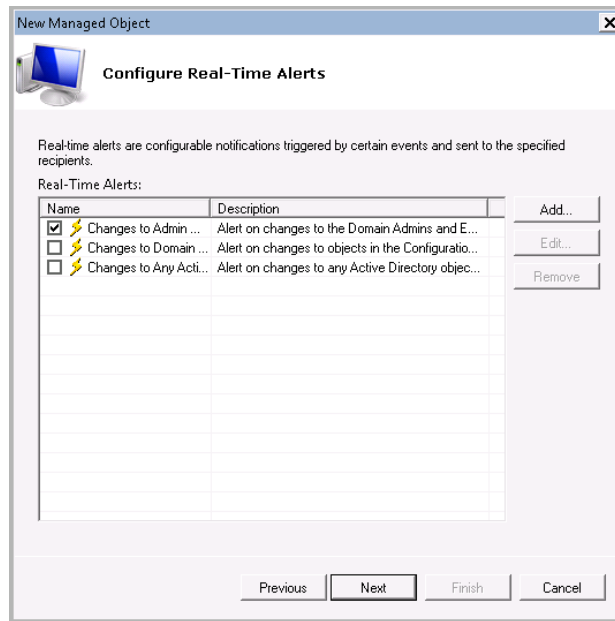


It is recommended to click the **Verify** button. The system will send a test message to the specified email address and will inform you if any problems are detected. Click **OK** to save the changes and then click **Next** to continue.

11. On the **Configure Real-Time Alerts** step, you can enable or disable predefined Real-Time Alerts, or configure custom alerts by clicking the **Add** button. To enable/disable

an existing alert, select/deselect the corresponding check box. For detailed instructions on how to configure a new Real-Time Alert, refer to [NetWrix Active Directory Change Reporter Administrator's Guide](#). Click **Next** to continue.

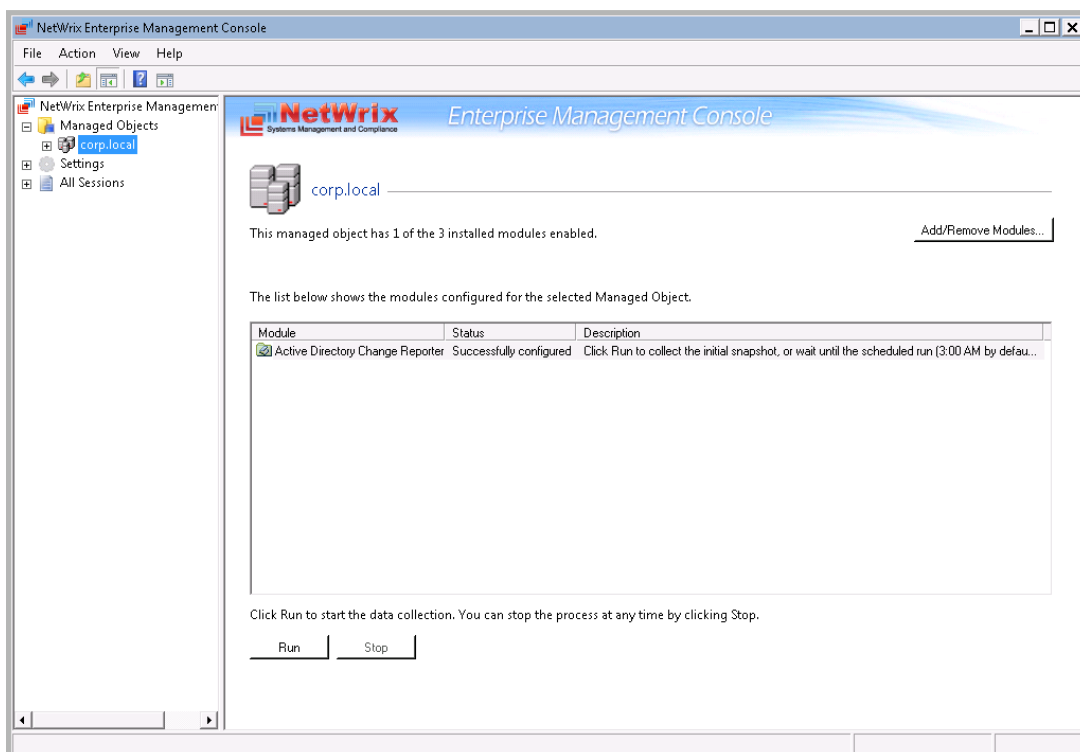
Figure 16: New Managed Object: Configure Real-Time Alerts



- On the last step, review your Managed Object settings and click **Finish** to exit the wizard. A confirmation message will be displayed.

The newly created Managed Object will appear under the **Managed Objects** node, and its details will be displayed in the right pane:

Figure 17: Managed Object Page



6. COLLECTING THE INITIAL SNAPSHOT

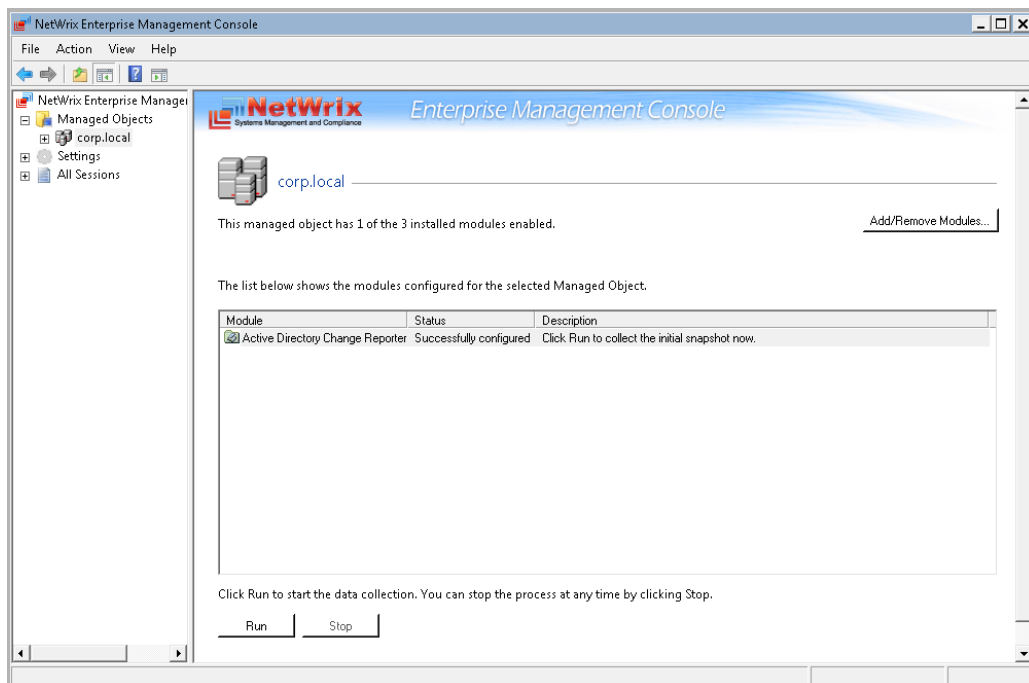
When you have added and configured a Managed Object, NetWrix Active Directory Change Reporter starts collecting data on changes that occurred in the target domain, and writes it to the Audit Archive, a local file-based storage. When the first data collection is performed, the initial snapshot of your monitored domain current state is created. NetWrix Active Directory Change reporter uses this information as a benchmark to generate change reports.

After you have configured a Managed Object, you can either wait for the system to run data collection automatically, or launch it manually from NetWrix Enterprise Management Console.

Procedure 4. To launch a data collection task

1. In NetWrix Enterprise Management Console, expand the **Managed Objects** node, and select your Managed Object.
2. In the details pane, click **Run**.

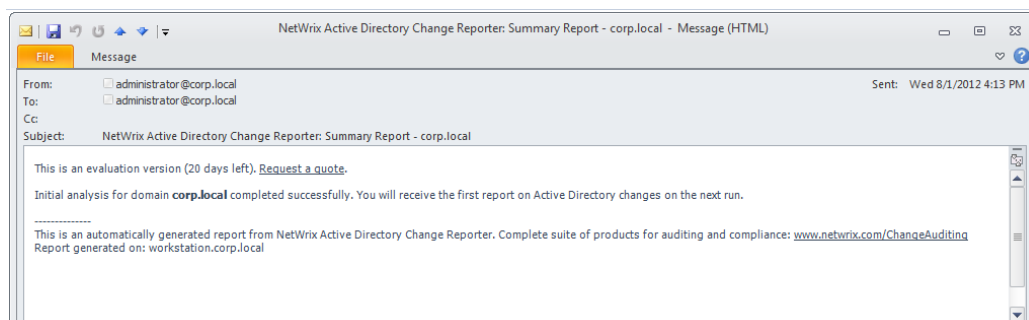
Figure 18: Managed Object Page



Note: Depending on the size of your monitored AD environment, creation of an initial snapshot may take quite long.

After the initial data collection task has completed, an email notification is sent to the specified recipient(s) like in the example below:

Figure 19: Initial Analysis Notification



7. MONITORING YOUR TARGET DOMAIN FOR CHANGES

7.1. Making Test Changes

Now that the product has collected a snapshot of your Managed Object current state, you can make test changes to your Active Directory domain to see how these changes will be reported.

For example, you can add a user, or change an account permissions, and so on.

Note: Before making any test changes to your Active Directory domain, ensure that you have the domain administrator's rights, and that the changes conform to your security policy.

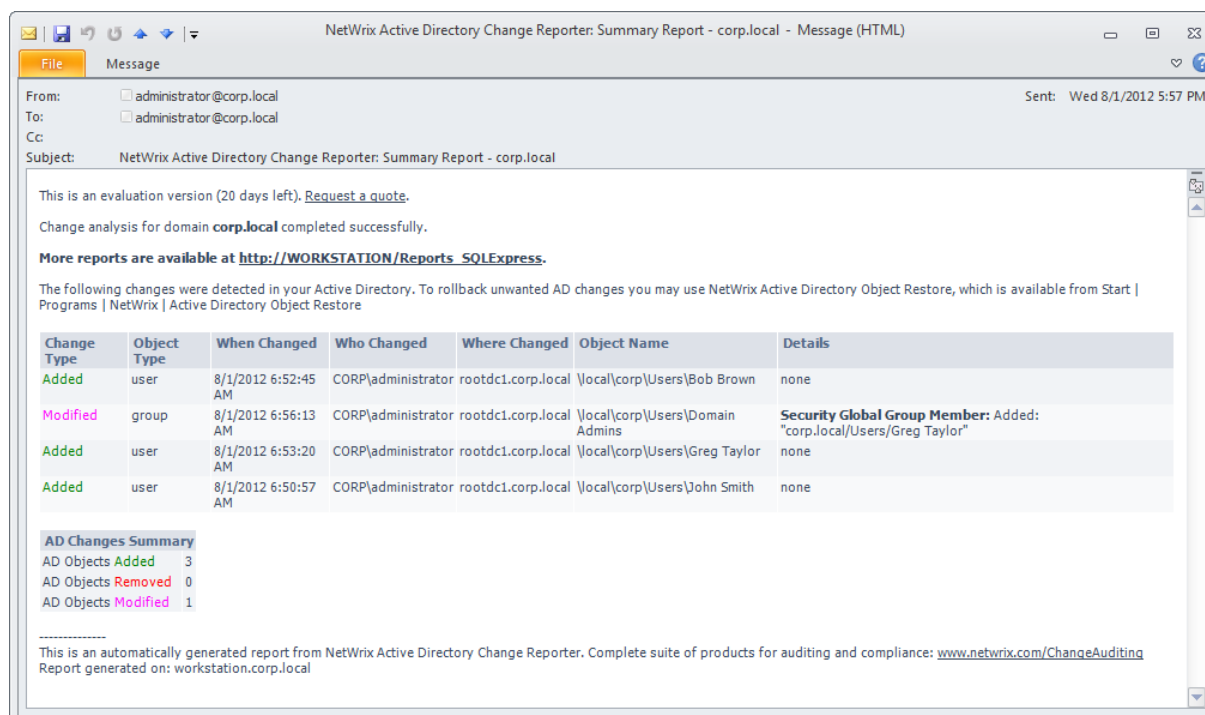
7.2. Receiving a Change Summary

After you have made changes to the monitored Active Directory domain, you can see how these changes are reported.

By default, NetWrix Active Directory Change Reporter emails a Change Summary to the specified recipient(s) daily at 3:00 AM. The Change Summary lists all changes that occurred in the last 24 hours and provides the WHAT, WHO, WHERE and WHEN details for every change.

If you do not wait until a scheduled Change Summary delivery, you can generate it manually. To do this, launch a data collection task manually as described in [Procedure 4 To launch a data collection task](#) earlier in this guide. After the task has completed, a Change Summary will be generated and sent to the specified email address:

Figure 20: Change Summary Example



This Change Summary reflects the following changes to the monitored AD domain:

- User Bob Brown has been added
- User Greg Taylor has been added
- User Greg Taylor has been added to the Domain Admins group

- User John Smith has been added

The Change Summary provides the following information for each change:

Table 5: Change Summary Fields

Parameter	Description
Change Type	Shows the type of action that was performed on the AD object. The possible values are: <ul style="list-style-type: none">• Added• Removed• Modified
Object Type	Shows the type of the AD object that was changed, e.g. "user".
When Changed	Shows the exact time when the change occurred.
Who Changed	Shows the name of the account under which the change was made.
Where Changed	Shows the name of the domain controller where the change was made.
Object Name	Shows the path to the AD object that was changed.
Details	Shows the before and after values for the modified object.

A APPENDIX: RELATED DOCUMENTATION

The table below lists all documents available to support NetWrix Active Directory Change Reporter:

Table 6: Product Documentation

Document Name	Overview
NetWrix Active Directory Change Reporter Quick-Start Guide	The current document.
NetWrix Active Directory Change Reporter Installation and Configuration Guide	Provides detailed instructions on how to install NetWrix Active Directory Change Reporter, NetWrix Group Policy Change Reporter and NetWrix Exchange Change Reporter, and explains how to configure the target AD domain for auditing.
NetWrix Active Directory Change Reporter Administrator's Guide	Provides a detailed explanation of the NetWrix Active Directory Change Reporter features and step-by-step instructions on how to configure and use the product.
NetWrix Active Directory Change Reporter User Guide	Provides the information on different NetWrix Active Directory Change Reporter reporting capabilities, lists all available reports and explains how they can be viewed and interpreted.
NetWrix Active Directory Change Reporter Freeware Edition Quick-Start Guide	Provides instructions on how to install, configure and use NetWrix Active Directory Change Reporter, NetWrix Group Policy Change Reporter and NetWrix Exchange Change Reporter Freeware Edition.
NetWrix Active Directory Change Reporter Release Notes	Contains a list of the known issues that customers may experience with NetWrix Active Directory Change Reporter 7.2, and suggests workarounds for these issues.
Troubleshooting Incorrect Reporting of the "Who Changed" Parameter	Step-by-step instructions on how to troubleshoot incorrect reporting of the 'who changed' parameter.
Configuring Real-Time Alerts in NetWrix Active Directory Change Reporter	This technical article provides detailed instructions on how to configure real-time alerts, as well as an algorithm for selecting the correct attribute for the type of change you want to track. It also contains step-by-step procedures that will guide you through configuration of some most commonly used alerts.
Installing Microsoft SQL Server and Configuring the Reporting Services	This technical article provides instructions on how to install Microsoft SQL Server 2005/2008 R2/2012 Express and configure the Reporting Services.
How to Subscribe to SSRS Reports	This technical article explains how to configure a subscription to SSRS reports using the Report Manager.
Integration with Third Party SIEM Systems	This article explains how to enable integration with third-party Security Information and Event Management (SIEM) systems.
Native AD Auditing Cheat Sheet	Provides an Active Directory auditing configuration checklist.