

# FACTBOOK 2019

NAGOYA UNIVERSITY



*Developing synergies  
outside of academia*

*Training outstanding doctoral  
researchers to lead  
our knowledge-based society*

*Becoming an elite research  
university that produces  
world-leading research*

*Presidential Leadership and a  
Flexible System for Proposing,  
Debating, and Enacting Policies  
through Shared Governance*

*Strengthening our financial basis  
through a positive cycle of  
management resources*

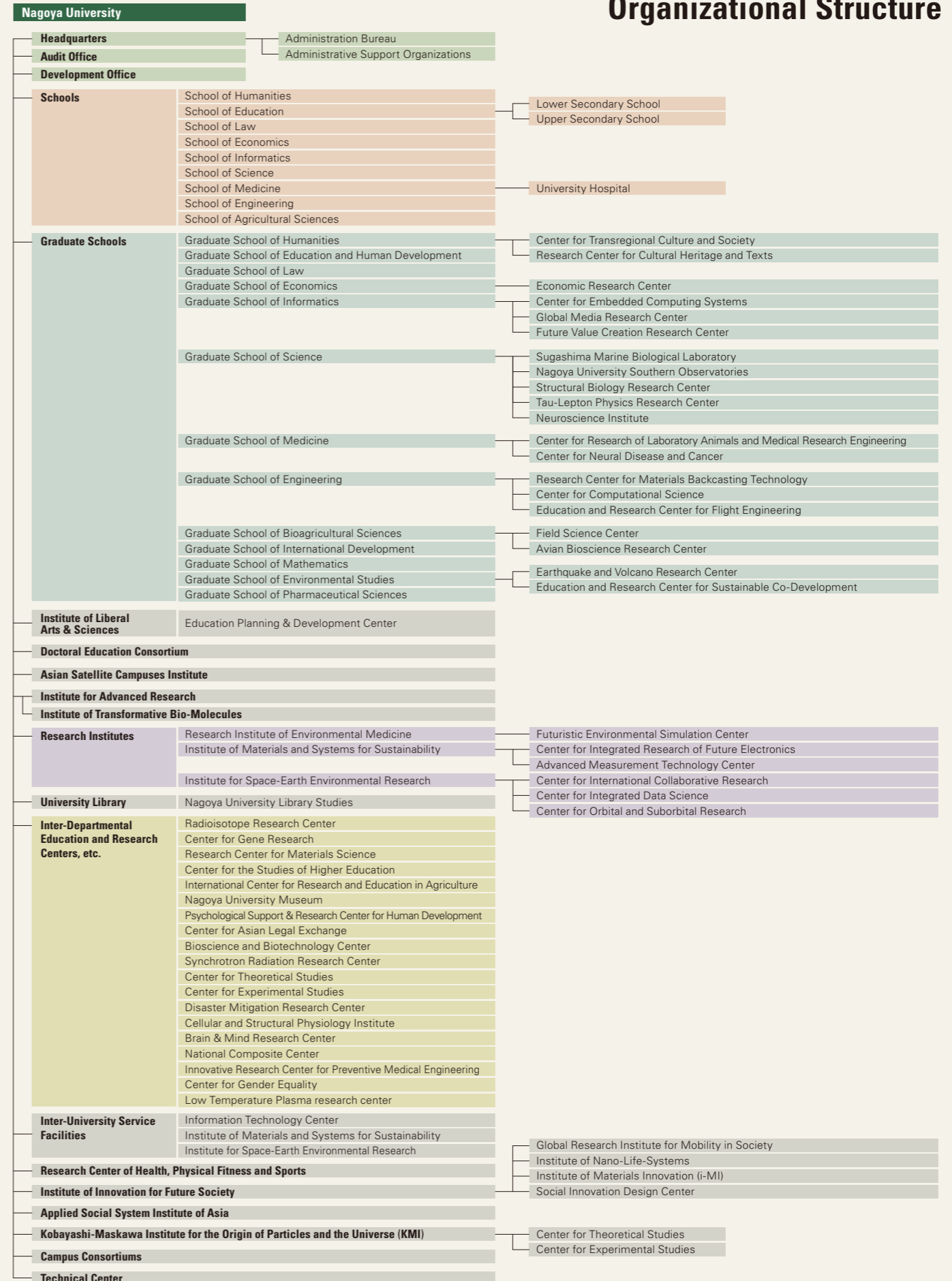
*Creation of Positive Cycle for  
Continuous Development with the  
New Multicampus Tokai National  
University System*

*Creating an international  
campus that attracts  
people from around the world  
and developing overseas outreach*



- 01 Organizational Structure
- 02 Schools (Undergraduate Courses)
- 03 Graduate Schools (Graduate Courses)
- 06 Staff  
Student Enrollment
- 07 Degrees Conferred  
Financial Outline
- 08 Highlights of Research and Education Programs
- 09 Housing for International Researchers and Students  
Library Holdings
- 10 Our Partner Institutions
- 14 International Exchange
- 16 Historical Chart
- 17 The City of Nagoya

# Organizational Structure



\*English names for the above organizations are tentative.

## Schools (Undergraduate Courses)

Schools	Departments	Courses / Programs
School of Humanities	Department of Humanities	<ul style="list-style-type: none"> <li>Language and Culture Studies Degree Program</li> <li>Literature and Linguistic Program</li> <li>Philosophy and Ethics Program</li> </ul>
		<ul style="list-style-type: none"> <li>History and Culture Studies Degree Program</li> <li>History and Anthropology Program</li> </ul>
		<ul style="list-style-type: none"> <li>Environmental and Behavioral Science Degree Program</li> <li>Environmental and Behavioral Science Program</li> </ul>
School of Education	Department of Human Developmental Sciences	<ul style="list-style-type: none"> <li>Lifelong Education and Development</li> <li>School Education and Information Science</li> <li>International Education and Culture</li> <li>Human Psychology</li> <li>Counseling and Psychotherapy</li> </ul>
School of Law	Department of Law and Political Science	<ul style="list-style-type: none"> <li>Fundamental Positive Law</li> <li>Fundamental Political Science</li> <li>Comtemporany Legal Disciplines</li> <li>Dispute Settlement Law</li> <li>Business Economics Law</li> <li>Public Policy</li> <li>International Relations</li> <li>Legal and Administrative Informatics</li> </ul>
	Department of Business Administration	<ul style="list-style-type: none"> <li>Corporate Management</li> <li>Information Accounting</li> </ul>
School of Economics	Department of Economics	<ul style="list-style-type: none"> <li>Theoretical Economics</li> <li>Applied Economics</li> </ul>
	Department of Business Administration	<ul style="list-style-type: none"> <li>Corporate Management</li> <li>Information Accounting</li> </ul>
	Department of Business Administration	<ul style="list-style-type: none"> <li>Corporate Management</li> <li>Information Accounting</li> </ul>
School of Informatics	Department of Natural Informatics	<ul style="list-style-type: none"> <li>Division of Mathematical Informatics</li> <li>Division of Complex Systems Science</li> </ul>
	Department of Human and Social Informatics	<ul style="list-style-type: none"> <li>Division of Social Informatics</li> <li>Division of Cognitive and Psychological Sciences</li> </ul>
	Department of Computer Science	<ul style="list-style-type: none"> <li>Division of Computing and Software Systems</li> <li>Division of Intelligent Systems</li> </ul>
School of Science	Department of Mathematics	<ul style="list-style-type: none"> <li>Mathematics</li> </ul>
	Department of Physics	<ul style="list-style-type: none"> <li>Physics</li> </ul>
	Department of Chemistry	<ul style="list-style-type: none"> <li>Chemistry</li> </ul>
	Department of Biological Science	<ul style="list-style-type: none"> <li>Biological Science</li> </ul>
	Department of Earth and Planetary Sciences	<ul style="list-style-type: none"> <li>Earth and Planetary Sciences</li> </ul>
School of Medicine	Department of Medicine	<ul style="list-style-type: none"> <li>Anatomy</li> <li>Physiology</li> <li>Biochemistry</li> <li>Pathology</li> <li>Microbiology</li> <li>Medical Zoology</li> <li>Immunology</li> <li>Legal Medicine</li> <li>Hygiene</li> <li>Public Health</li> <li>Preventive Medicine</li> <li>Internal Medicine, Neurology</li> <li>Surgery, Thoracic Surgery</li> <li>Orthopedic Surgery</li> <li>Obstetrics and Gynecology</li> <li>Ophthalmology</li> <li>Psychiatry</li> <li>Pediatrics</li> <li>Dermatology</li> <li>Urology</li> <li>Otorhinolaryngology</li> <li>Radiology Medicine</li> <li>Anesthesiology</li> <li>Oral and Maxillofacial Surgery</li> <li>Neurosurgery</li> <li>Geriatrics</li> <li>Emergency Medicine</li> <li>Clinical Laboratory Medicine</li> </ul>
	Department of Health Sciences	<ul style="list-style-type: none"> <li>Nursing</li> <li>Radiological Technology</li> <li>Medical Technology</li> <li>Physical Therapy</li> <li>Occupational Therapy</li> </ul>
School of Engineering	Chemistry and Biotechnology	
	Physical Science and Engineering	
	Material Science and Engineering	
	Electrial Engineering, Electronics, and Information Engineering	
	Mechanical and Aerospace Engineering	
	Energy Science and Engineering	
	Civil Engineering and Architecture	
School of Agricultural Sciences	Department of Bioenvironmental Sciences	<ul style="list-style-type: none"> <li>Bioenvironmental Sciences</li> </ul>
	Department of Bioresource Sciences	<ul style="list-style-type: none"> <li>Bioresource Sciences</li> </ul>
	Department of Applied Biosciences	<ul style="list-style-type: none"> <li>Applied Biosciences</li> </ul>

\*English names for the above departments, courses and programs are tentative.

## Global 30 International Programs (Undergraduate)

Programs	Affiliated Schools
Automotive Engineering	<ul style="list-style-type: none"> <li>School of Engineering</li> </ul>
Physics	<ul style="list-style-type: none"> <li>School of Science</li> </ul>
Chemistry	<ul style="list-style-type: none"> <li>School of Science</li> <li>School of Engineering</li> </ul>
Biological Science	<ul style="list-style-type: none"> <li>School of Science</li> <li>School of Agricultural Sciences</li> </ul>
Social Sciences	<ul style="list-style-type: none"> <li>School of Law</li> <li>School of Economics</li> </ul>
Japan-in-Asia Cultural Studies	<ul style="list-style-type: none"> <li>School of Humanities</li> </ul>

## Graduate Schools (Graduate Courses)

Graduate Schools	Departments	Courses / Fields
Graduate School of Humanities	Department of Humanities	<ul style="list-style-type: none"> <li>Language and Culture Studies Degree Program</li> <li>Literature and Linguistic Program</li> <li>Philosophy and Ethics Program</li> </ul>
		<ul style="list-style-type: none"> <li>History and Culture Studies Degree Program</li> <li>History and Anthropology Program</li> <li>Integrated Culture Studies Program</li> </ul>
		<ul style="list-style-type: none"> <li>English Professionals Training Degree Program</li> <li>English Professionals Training Program</li> </ul>
		<ul style="list-style-type: none"> <li>Multicultural Studies Degree Program</li> <li>Transnational Interaction and Diversity Studies Program</li> </ul>
Graduate School of Education and Human Development	Department of Educational Sciences	<ul style="list-style-type: none"> <li>Lifelong Education and Development</li> <li>School Education and Information Sciences</li> <li>Foundations of Education and Human Development</li> <li>Higher Education</li> <li>Sports Science for Lifelong Physical Activity</li> </ul>
	Department of Psychology and Human Developmental Sciences	<ul style="list-style-type: none"> <li>Psychological Sciences</li> <li>Human Development and Clinical Psychology</li> <li>Sports Behavioral Sciences</li> </ul>
Graduate School of Law	Department of the Combined Graduate Program in Law and Political Science	<ul style="list-style-type: none"> <li>Core Law and Political Science</li> <li>Contemporary Legal Systems</li> <li>International Comparative Law and Political Science</li> <li>Asian Law and Political Science</li> </ul>
	JD Program for Legal Practice (Nagoya University Law School)	<ul style="list-style-type: none"> <li>Core Law</li> <li>Applied Contemporary Law</li> </ul>
Graduate School of Economics	Department of Socio-Economic Systems	<ul style="list-style-type: none"> <li>Analysis on Markets and Institutions</li> <li>Socio-Economic Analysis</li> <li>Analysis on the System of Policy Making</li> <li>Socio-Environmental System</li> </ul>
	Department of Industrial Management Systems	<ul style="list-style-type: none"> <li>Corporate System</li> <li>Management Innovation</li> <li>Creation of Information</li> </ul>
Graduate School of Informatics	Department of Mathematical Informatics	<ul style="list-style-type: none"> <li>Theoretical Informatics and Mathematics Unit</li> <li>Mathematical Modeling and Informatics Unit</li> </ul>
	Department of Complex Systems Science	<ul style="list-style-type: none"> <li>Many-Body Systems Science Unit</li> <li>Life-Science Informatics Unit</li> <li>Materials Informatics Unit</li> <li>Emergent Systems Unit</li> <li>Complex Systems Computation Unit</li> <li>Information Visualization Unit</li> </ul>
	Department of Social Informatics	<ul style="list-style-type: none"> <li>Philosophy of Information Unit</li> <li>Information Society Design Unit</li> <li>Global Media and Communication Unit</li> </ul>
	Department of Cognitive and Psychological Sciences	<ul style="list-style-type: none"> <li>Cognitive Science Unit</li> <li>Psychology Unit</li> </ul>
	Department of Computing and Software Systems	<ul style="list-style-type: none"> <li>Theory of Computation Unit</li> <li>Information System Platform Unit</li> <li>Software Science and Technology Unit</li> <li>Information Network Systems Unit</li> </ul>
	Department of Intelligent Systems	<ul style="list-style-type: none"> <li>Media informatics Unit</li> <li>System informatics Unit</li> <li>Field informatics Unit</li> </ul>
Graduate School of Science	Division of Particle and Astrophysical Science	<ul style="list-style-type: none"> <li>Fundamental Theoretical Physics</li> <li>Cosmology and Astrophysics</li> <li>Interstellar Physics</li> <li>Elementary Particle Physics</li> <li>Hadron Physics</li> <li>Atomic Physics</li> <li>Solar-Terrestrial Relationships</li> <li>Physical Processes in Solar-Terrestrial Environment</li> <li>Chemical Processes in Solar-Terrestrial Environment</li> <li>Theoretical Studies for Particle and Astrophysics</li> <li>Experimental Studies for Particle and Astrophysics</li> </ul>
	Division of Material Science	<ul style="list-style-type: none"> <li>Interdisciplinary Chemical Sciences</li> <li>Molecular Biophysics</li> <li>Inorganic and Analytical Chemistry</li> <li>Organic Chemistry and Biochemistry</li> <li>Physical Chemistry</li> <li>Biophysics</li> <li>Fundamental Condensed Matter Physics</li> <li>Solid State Physics</li> <li>Applied Condensed Matter Physics</li> <li>Materials Science</li> </ul>
	Division of Biological Science	<ul style="list-style-type: none"> <li>Biomolecular Architecture</li> <li>Molecular Genetics</li> <li>Molecular Information and Cellular Regulation</li> <li>Developmental Biology</li> <li>Genetic Mechanism</li> <li>Supramolecular Biology</li> <li>Cell Regulation</li> <li>Biological Systems</li> <li>Environmental Biology</li> <li>Gene Analysis</li> <li>Genomics and Clock Bio-nanomachine</li> <li>Reproduction and Genetics</li> </ul>
	International Collaborative Programme in Science between the University of Edinburgh and Nagoya University	

Graduate Schools	Departments	Courses / Fields	
Graduate School of Medicine	Doctor of Medical Science	Program in Integrated Medicine	<ul style="list-style-type: none"> <li>Biological Chemistry</li> <li>Microbiology and Immunology</li> <li>Advanced Medical Science</li> <li>Laboratory Animal Science</li> <li>Aging Research</li> <li>AIDS Research</li> <li>Cell Science</li> <li>Neuroscience</li> <li>Oncology</li> <li>Higher Nervous Control</li> <li>Regulation of Organ Function</li> <li>Molecular and Cellular Adaptation</li> <li>Neurochemistry</li> <li>Anatomy and Cell Biology</li> <li>Pathology</li> <li>Development</li> <li>Cancer Genetics</li> <li>Social Life Science</li> <li>Health Promotion Medicine</li> <li>Epidemiology</li> </ul>
		Division of Clinical Medicine	<ul style="list-style-type: none"> <li>Internal Medicine</li> <li>High-Technology Application of Medicine</li> <li>Clinical Neurosciences</li> <li>Head and Neck and Sensory Organ Medicine</li> <li>Surgery</li> <li>Musculoskeletal and Cutaneous Medicine</li> <li>Biomedical Regulation</li> <li>Clinical Management Medicine</li> <li>Medicine in Growth and Aging</li> <li>Maternal and Perinatal Care</li> <li>Psychiatry for Parents and Children</li> <li>Comprehensive Ambulatory Medicine</li> </ul>
		Division of Clinical Pharmacology	<ul style="list-style-type: none"> <li>Molecule Pharmacology</li> <li>Clinical Pharmacology</li> <li>Pharmaceutical R&amp;D</li> <li>Pharmaceutical Management</li> </ul>
	International Collaborative Program in Comprehensive Medical Science between Nagoya University and University of Adelaide		
	International Collaborative Program in Comprehensive Medical Science between Nagoya University and Lund University		
	International Collaborative Program in Comprehensive Medical Science between Nagoya University and University of Freiburg		
	Master's Course	Program in Medical Science	
		Program in Medical Science, Healthcare Administration Course	※ YLP-not open for general admission
	Program in Nursing		<ul style="list-style-type: none"> <li>Fundamentals and Clinical Nursing</li> <li>Nursing for Developmental Health</li> </ul>
	Program in Radiological and Medical Laboratory Sciences		<ul style="list-style-type: none"> <li>Radiological Sciences</li> <li>Pathophysiological Laboratory Sciences</li> <li>Brain and Mind Sciences</li> </ul>
Program in Physical and Occupational Therapy		<ul style="list-style-type: none"> <li>Physical Therapy</li> <li>Occupational Therapy</li> </ul>	

Graduate School of Engineering	Departments	Courses / Fields
Graduate School of Engineering	Molecular and Macromolecular Chemistry	
	Materials Chemistry	
	Biomolecular Engineering	
	Applied Physics	
	Materials Physics	
	Materials Design Innovation Engineering	
	Materials Process Engineering	
	Chemical Systems Engineering	
	Electrical Engineering	
	Electronics	
	Information and Communication Engineering	
	Mechanical Systems Engineering	
	Micro-Nano Mechanical Science and Engineering	
	Aerospace Engineering	
	Energy Engineering	
	Applied Energy	
	Civil and Environmental Engineering	

Graduate School of Bioagricultural Sciences	Departments	Courses / Fields	
Graduate School of Bioagricultural Sciences	Department of Forest and Environmental Resources Sciences	<ul style="list-style-type: none"> <li>Division of Forest and Environmental Resources Sciences</li> </ul>	
	Department of Plant Production Sciences	<ul style="list-style-type: none"> <li>Division of Plant Production Sciences</li> </ul>	
	Department of Animal Sciences	<ul style="list-style-type: none"> <li>Division of Animal Sciences</li> </ul>	
	Department of Applied Biosciences	<ul style="list-style-type: none"> <li>Division of Applied Biosciences</li> </ul>	
	International Collaborative Program in Agricultural Science between Nagoya University and Kasetsart University		
	International Collaborative Program in Agricultural Science between Nagoya University and The University of Western Australia		

Graduate School of International Development	Departments	Courses / Fields
Graduate School of International Development	Department of International Development and Cooperation	<ul style="list-style-type: none"> <li>International Development and Cooperation</li> <li>Development Policy</li> <li>Managerial Economics of Development</li> <li>Education and Human Development</li> <li>Comparative Study of Legal and Political Systems</li> <li>International Cultural Cooperation</li> </ul>

Graduate School of Mathematics	Departments	Courses / Fields
Graduate School of Mathematics	Division of Mathematics	<ul style="list-style-type: none"> <li>Fundamental Mathematics</li> <li>Natural Mathematics</li> <li>Social Mathematics</li> <li>Computational Mathematics</li> <li>Advanced Topology</li> </ul>

Graduate Schools	Departments	Courses / Fields
Graduate School of Environmental Studies	Department of Earth and Environmental Sciences	<ul style="list-style-type: none"> <li>Global Environmental Variation</li> <li>Earth Environmental Systems</li> <li>Climate Science</li> <li>Global Geochemistry</li> <li>Geology and Geobiology</li> <li>Geochemistry and Cosmochemistry</li> <li>Earth and Planetary Physics</li> <li>Earth and Planetary Dynamics</li> <li>Chronology and Natural History</li> <li>Global Water Cycle</li> </ul>
	Department of Environmental Engineering and Architecture	<ul style="list-style-type: none"> <li>Sustainable Urban Development</li> <li>Environmental and Safety Management</li> <li>Functional Materials and Environment</li> <li>Material-Systems Science in Environment</li> <li>Environmental Systems and Planning</li> <li>Land, Infrastructure and Transportation Management</li> <li>Architectural and Environmental Design</li> <li>Building Structure and Construction Systems</li> </ul>
	Department of Social and Human Environment	<ul style="list-style-type: none"> <li>Environmental Policies</li> <li>Economic Environment</li> <li>Environmental Law and Politics</li> <li>Sociology</li> <li>Geography</li> </ul>
Graduate School of Pharmaceutical Sciences	Department of Basic Medicinal Sciences	<ul style="list-style-type: none"> <li>Organic Chemistry</li> <li>Bioscience</li> <li>Structural Biology</li> </ul>

\*English names for the above departments, courses and fields are tentative.



## Global 30 International Programs (Graduate)

Programs	Affiliated Schools	Degree	
		Master's	Doctoral
Automotive Engineering	• Graduate School of Engineering	●	
Civil and Environmental Engineering	• Graduate School of Engineering • Graduate School of Environmental Studies	●	●
Earth and Environmental Sciences	• Graduate School of Environmental Studies	●	●
Engineering Physics	• Graduate School of Engineering	●	●
Physics and Mathematics	• Graduate School of Science • Graduate School of Mathematics	●	●
Chemistry	• Graduate School of Science • Graduate School of Engineering	●	●
Biological and Bioagricultural Sciences	• Graduate School of Science • Graduate School of Bioagricultural Sciences	●	●
Biological and Bioagricultural Sciences	• Graduate School of Medicine	●	
Medical Science	• Graduate School of Medicine		●
Economics and Business Administration	• Graduate School of Economics	●	
Linguistics and Cultural Studies	• Graduate School of Humanities	●	
Japan-in-Asia Cultural Studies	• Graduate School of Humanities	●	

## Other International Programs (Graduate)

Programs	Affiliated Schools	Degree	
		Master's	Doctoral
International Development and Cooperation Course	• Graduate School of International Development	●	●
Department of the Combined Graduate Program in Law and Political Science LL. M. (Comparative Law) Program and LL.D.(Comparative Law)	• Graduate School of Law	●	●
Young Leaders' Program (YLP)	• Graduate School of Medicine	●	
Nagoya University Global Environmental Leaders Program (NUGELP)	• Graduate School of Environmental Studies • Graduate School of Engineering	●	●
Forefront Studies Program	• Graduate School of Environmental Studies • Graduate School of Engineering	●	●

# Staff

As of May 1, 2018

Members of the Board of Trustees			
President		1	
Trustees		7	
Auditors		2	
<b>Total</b>		<b>10</b>	
Staff (Full-time)			
Faculty	Professors	652	(62)*1
	Associate Professors	518	(95)
	Lecturers	161	(110)
	Assistant Professors	393	(351)
	Research Associates	3	
	Researchers	0	(188)
Specialist		4	(2)
University Research Administrator		1	(34)
School Teachers at Affiliated Schools		35	
Administrative / Technical Staff*2		2,190	(150)
<b>Total</b>		<b>3,957</b>	<b>(992)</b>

\*1 Data in parenthesis show the number of staff under limited-time contracts.  
\*2 Data include medical staff of the University Hospital.



# Degrees Conferred

FY2017

Name of Schools / Graduate Schools	Bachelor's Degree	Master's Degree	Doctor's Degree	Professional Degree
Humanities	141	64	24	-
Education	73	39	14	-
Law	172	49	15	25
Economics	236	31	8	-
Informatics and Sciences	89	-	-	-
Science	275	187	50	-
Medicine	323	86	206	-
Engineering	788	630	80	-
Agricultural Sciences	178	158	26	-
International Development	-	69	16	-
Mathematics	-	45	10	-
Languages and Cultures	-	45	11	-
Environmental Studies	-	149	22	-
Information Science	-	123	13	-
Pharmaceutical Sciences	-	27	8	-
Human Informatics	-	-	-	-
<b>Total</b>	<b>2,275</b>	<b>1,702</b>	<b>503</b>	<b>25</b>



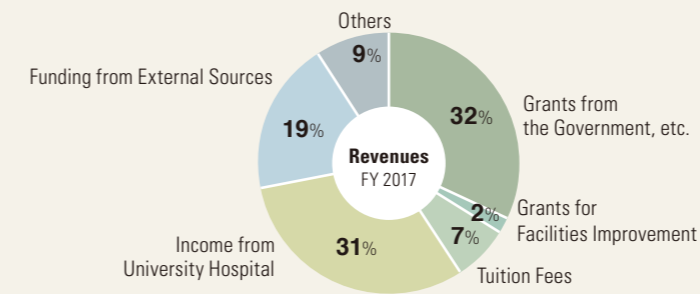
# Student Enrollment

As of May 1, 2018

Name of Schools / Graduate Schools	Undergraduate Courses		Graduate Courses		Total
	Degree seeking	Non-degree seeking	Degree seeking	Non-degree seeking	
Humanities	588	77	403	24	1,092
Education	318	21	221	15	575
Law	678	30	217	56	981
Economics	948	28	173	7	1,156
Informatics	281	25	360	12	678
Informatics and Sciences	208	-	-	-	208
Science	1,222	31	554	7	1,814
Medicine	1,537	61	978	25	2,601
Engineering	3,186	49	1,721	21	4,977
Agricultural Sciences	758	10	430	10	1,208
International Development	-	-	233	10	243
Mathematics	-	-	153	8	161
Languages and Cultures	-	-	59	-	59
Environmental Studies	-	-	432	33	465
Information Science	-	-	61	-	61
Pharmaceutical Sciences	-	-	92	2	94
Human Informatics	-	-	1	-	1
International Education & Exchange Center	-	5	-	-	5
International Language Center	-	54	-	-	54
Research Institute of Environmental Medicine	-	3	-	-	3
Institute for Space-Earth Environmental Research	-	1	-	-	1
Institute of Materials and Systems for Sustainability	-	1	-	-	1
Research Center of Health, Physical Fitness and Sports	-	1	-	-	1
<b>Total</b>	<b>9,724</b>	<b>397</b>	<b>6,088</b>	<b>230</b>	<b>16,439</b>

# Financial Outline

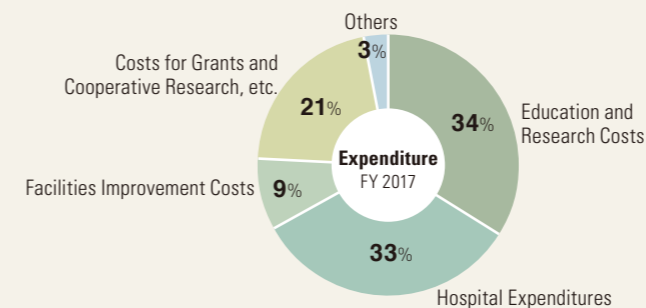
\*The following information was calculated in accordance with the National University Corporation Accounting Standards.



## Revenues

FY 2017

Item	Amount (million yen)
Grants from the Government, etc.	37,376
Grants for Facilities Improvement	1,952
Tuition Fees	8,737
Income from University Hospital	36,638
Funding from External Sources	22,733
Others	10,313
<b>Total</b>	<b>117,749</b>



## Expenditures

FY 2017

Item	Amount (million yen)
Education and Research Costs	37,601
Hospital Expenditures	36,737
Facilities Improvement Costs	10,174
Costs for Grants and Cooperative Research, etc.	23,203
Others	3,394
<b>Total</b>	<b>111,109</b>

\*Each item includes Labor Costs, the total of which was 49,132 million yen.

## External Funding for Research and Education

FY 2017

Item	Number of Cases	Amount(thousand yen)
Grants-in-Aid for Scientific Research	2,726	7,732,766
Other Governmental Grants	120	4,810,843
Donations and Commissioned Research	4,764	18,087,814

\*Data based on the book closed and including numbers / amounts received as research partakers.



## Highlights of Research and Education Programs

Top Global University Project	
Adoption of Year	Program Title
2014	Asian Hub University contributing to a sustainable society in the 21st century

World Premier International Research Center Initiative (WPI)		
Adoption of Year	Center name	Center Director
2012	Institute of Transformative Bio-Molecules	Graduate School of Science Prof. ITAMI Kenichiro

Program for Promoting the Enhancement of Research Universities		COI STREAM	
Adoption of Year	Program Title	Adoption of Year	Program Title
2015	Program for Promoting the Enhancement of Research Universities	2015	A Diverse and Individualized Social Innovation Hub -The "Mobility Society" for Elderly: Lead to an Active and Joyful Lifestyle-

Program for Leading Graduate Schools		
Adoption of Year	Program Title	School
2013	Graduate Program for Real-World Data Circulation Leaders	<ul style="list-style-type: none"> <li>Graduate School of Information Science</li> <li>Graduate School of Engineering</li> <li>Graduate School of Medicine</li> <li>Graduate School of Economics</li> </ul>
2013	Women Leaders Program to Promote Well-being in Asia	<ul style="list-style-type: none"> <li>Graduate School of International Development</li> <li>Graduate School of Education and Human Development</li> <li>Graduate School of Bioagricultural Sciences</li> <li>Graduate School of Medicine</li> </ul>

Re-Inventing Japan Project			
Adoption of Year	Type	Program Title	School
2016	Support for the formation of Collaborative Programs with Universities in Asia	Training Human Resources for the Development of an Epistemic Community in Law and Political Science to Promote the Formation of "jus commune" in East Asia	Graduate School of Law • School of Law
2016	Support for the formation of Collaborative Programs with Universities in Asia	Fostering Human Resources for Global Soft-Infrastructure connecting between ASEAN and Japan	Graduate School of Economics • School of Economics, Graduate School of Law • School of Law, Center for Asian Legal Exchange, Graduate School of Bioagricultural Sciences and School of Agricultural Sciences, International Cooperation Center for Agricultural Education, Graduate School of International Development, Graduate School of Environmental Studies, Graduate School of Mathematics

Open Innovation Platform with Enterprises, Research Institute and Academia (OPERA)	
Adoption of Year	Co-Creation Consortium Name
2019	Materials/Energy Renovation Co-Creation Consortium
2016	Human Machine Harmonization System (HMHS) Consortium

WISE Program (Doctoral Program for World-leading Innovative & Smart Education)	
Adoption of Year	Program Title
2018	DII Collaborative Graduate Program
2018	Graduate Program of Transformative Chem-Bio Research (GTR)

Exploration and Development of Global Entrepreneurship for NEXT generation	
Adoption of Year	Program Title
2017	Tokai-EDGE (Tongali) Program

enPiT (Education Network for Practical Information Technologies)	
Adoption of Year	Program Title
2017	enPiT-Pro: Applied Skill Development Program for Embedded Engineers
2016	enPiT2: QuadPro: Training Professional Embedded Engineers

## Housing for International Researchers and Students



International Ohmeikan House



International Residence HIGASHIYAMA



Housing in Noyori Conference Hall

For International Researchers		
Name of the Housing	Facilities	Address
International Residence HIGASHIYAMA (on campus)	15 rooms for single persons / couples (34m <sup>2</sup> ) 2 rooms for families (51.84m <sup>2</sup> )	Furo-cho, Chikusa-ku, Nagoya, 464-8601
Researchers Village HIGASHIYAMA (on campus)	2 rooms for families (76.45m <sup>2</sup> /78.33m <sup>2</sup> ) 4 rooms for families (67.5m <sup>2</sup> )	Furo-cho, Chikusa-ku, Nagoya, 464-8601
Researchers Village DAIKO (on campus)	14 rooms for single persons (28m <sup>2</sup> )	1-1-20 Daiko Minami, Higashi-ku, Nagoya, 461-0047
Researchers Village YAKUMO	9 rooms for couples / families (53m <sup>2</sup> )	28 Yakumo-cho, Showa-ku, Nagoya, 466-0823
Housing in Noyori Conference Hall (on campus)	3 rooms for single persons (50.98–54.15m <sup>2</sup> ) 5 rooms for couples (81.01–91.10m <sup>2</sup> ) 2 rooms for families (97.17m <sup>2</sup> /107.35m <sup>2</sup> )	Furo-cho, Chikusa-ku, Nagoya, 464-8601
Idaka-cho Residence	26 rooms for single persons (21.06–21.99m <sup>2</sup> )	2-38 Kamenoi, Meito-ku, Nagoya, 465-0094

\*We have some private housings outside campus.

For International Students		
Name of the Housing	Facilities	Address
International Residence Daiko	224 rooms for single persons (13m <sup>2</sup> -15m <sup>2</sup> ) 4 rooms for couples (30.6m <sup>2</sup> -31.5m <sup>2</sup> )	1-1-20, Daiko-minami, Higashi-ku, Nagoya, 461-0047
International Residence HIGASHIYAMA (on campus)	95 rooms for single persons (16m <sup>2</sup> ) 25 rooms for couples (34m <sup>2</sup> )	Furo-cho, Chikusa-ku, Nagoya, 464-8601
International Residence YAMATE	104 rooms for single persons (15m <sup>2</sup> ) 112 rooms for single persons (7m <sup>2</sup> )	165 Takamine-cho, Showa-ku, Nagoya, 466-0811
International Ohmeikan House	292 rooms for single persons *Japanese students are also housed in this dormitory.	165 Takamine-cho, Showa-ku, Nagoya, 466-0811
Ishida Memorial International Residence MYOKEN	93 rooms for single persons (15.1m <sup>2</sup> )	40 Myoken-cho, Showa-ku, Nagoya, 466-0814



## Library Holdings

The University Library is composed of the Central Library, the Medical Library, and departmental libraries. As of April 1st, 2018, the Library holds 3,353,092 volumes of books in total, including 1,550,503 foreign books, as well as a large amount of electronic resources and audio visual collections.

In order to support students' learning experiences, the library established a space called "learning commons" where students can learn in groups through discussion and receive personal guidance for using electronic resources and software.

# Our Partner Institutions

As of December 1, 2018

## Academic Exchange Agreements

- = Inter-University Agreement
- = Inter-School Agreement

### Asia

#### BANGLADESH

- Bangladesh Agricultural University
- Bangladesh University of Engineering & Technology, Department of Physics
- University of Dhaka, Faculty of Social Sciences
- SAARC Meteorological Research Centre

#### BHUTAN

- The Centre for Bhutan Studies

#### CAMBODIA

- Royal University of Phnom Penh
- Royal University of Agriculture
- Royal University of Law and Economics

#### CHINA

- Nanjing University
- Jilin University
- Huazhong University of Science and Technology
- Tsinghua University
- Fudan University
- Xi'an Jiaotong University
- Zhejiang University
- Shanghai Jiao Tong University
- Tongji University
- Northeastern University
- Peking University
- Harbin Institute of Technology
- University of Science and Technology of China
- Chinese Academy of Sciences, the Shanghai Institute of Organic Chemistry
- Dalian University of Technology
- Central South University
- Beijing University of Technology
- Chinese Academy of Sciences, Purple Mountain Observatory
- Chinese Academy of Sciences, National Astronomical Observatories
- China University of Political Science and Law
- Chinese Academy of Social Sciences, Institute of Literature and Institute of Literature of National Minorities
- Peking University, School of International Studies
- East China University of Political Science and Law
- Chinese Academy of Sciences, Institute of High Energy Physics
- Beijing International Studies University
- Nanjing University of Aeronautics and Astronautics
- Jiangsu Provincial Academy of Social Sciences (JSASS)
- Chinese Academy of Sciences, Institute of Process Engineering
- Polar Research Institute of China
- Southwest Jiaotong University, School of Economics and Management
- Beijing Institute of Technology, School of Management and Economics
- East China Normal University, Faculty of Education Sciences
- Chinese Academy of Sciences, Research Center for Eco-Environmental Sciences
- Chinese Academy of Social Sciences, Institute of Population and Labor Economics
- Tianjin University, School of Management and School of Public Administration

- University of International Business and Economics, School of International Trade & Economics
- Chinese Academy of Sciences, Xinjiang Institute of Ecology and Geography
- China Meteorological Administration, Institute of Desert Meteorology
- Chinese Academy of Sciences, Shanghai Institute of Ceramics
- Hainan University, Law School
- Renmin University of China, School of Law
- Shenyang University of Technology
- Ministry of Health, P.R.China-Japan Friendship Hospital
- Sun Yat-sen University, Lingnan College
- Beijing Normal University, Academy of Disaster Reduction and Emergency Management, State Key Laboratory of Earth Surface Processes and Resource Ecology
- Xiamen University, School of Law
- Chinese Academy of Sciences, Institute of Theoretical Physics
- Chinese Academy of Sciences, Institute of Geographic Sciences and Natural Resources Research
- Nanjing Normal University, School of Energy & Mechanical Engineering
- Donghua University, College of Foreign Languages
- Shanghai International Studies University, School of Japanese Studies and School of Chinese Studies and Exchange
- Beijing Normal University, Faculty of Education
- Institute of Science and Technology for Development of Shandong (ISTD)
- Xi'an International Studies University, School of Japanese Culture and Economy
- Renmin University of China, School of Foreign Languages
- Institute of Geophysics, China Earthquake Administration
- Tianjin University, School of Architecture

#### HONG KONG

- The Chinese University of Hong Kong
- The University of Hong Kong
- City University of Hong Kong
- The Hong Kong University of Science and Technology, School of Engineering

#### INDIA

- University of Pune
- Indian Institute of Science, Bangalore
- Tata Institute of Fundamental Research
- Tata Institute of Fundamental Research, Natural Sciences Faculty
- Indian Institute of Technology Madras
- Indian Institute of Technology Delhi

#### INDONESIA

- Gadjah Mada University
- The State University of Surabaya
- Institute of Technology Bandung
- Indonesian National Institute of Aeronautics and Space
- Padjadjaran University, Faculty of Letters
- Syiah Kuala University, Faculty of Basic Science
- Diponegoro University, Pusat Studi Asia
- Agency for the Assessment and Application of Technology (BPPT), Center for the Assessment and Application of Environmental Technology
- University of Indonesia, Faculty of Engineering
- University of Indonesia, Faculty of Computer Science
- Sepuluh Nopember Institute of Technology
- Sriwijaya University, Faculty of Agriculture
- Universitas Halu Oleo
- Indonesia University of Education (UPI)
- Syiah Kuala University, Faculty of Agriculture

#### REPUBLIC OF KOREA

- Mokpo National University
- Gyeongsang National University
- Ewha Womans University
- Hanyang University
- Korea University
- Seoul National University
- Kyung Hee University
- Yonsei University
- Sungkyunkwan University
- Pohang University of Science and Technology
- Korea Advanced Institute of Science and Technology (KAIST)
- Korea Maritime and Ocean University
- Korean Research Institute of Standards and Science, Astronomy Observatory
- Chungnam National University, College of Economics and Business Administration
- Korea University, College of Education
- Korea Institute for Advanced Study, School of Mathematics
- Seoul National University, College of Law
- Kyungnam University, Industry Academic Cooperation Foundation
- Korea Legislation Research Institute
- Pukyong National University, College of Fisheries Sciences
- Pusan National University, College of Engineering
- Hankuk University of Foreign Studies, Graduate School and Graduate School of International Area Studies
- Chonnam National University, College of Business Administration
- University of Seoul, College of Public Affairs and Economics
- Chonbuk National University, Institute for North-East Asian Law
- Korea Institute of Geoscience and Mineral Resources, Geologic Environment Research Division
- Kyungpook National University, Faculty of Engineering
- Institute of Sunchang Fermented Soybean Products
- Seoul National University Hospital
- Korean Space Weather Center
- ASAN Medical Center
- Dong-A University, College of Natural Resources and Life Science
- Korea Aerospace University, College of Engineering, Department of Materials Science, Center of Surface Technology and Applications
- Pusan National University, Professional Graduate School of Law
- Korea Institute of Ocean Science and Technology, Korea Ocean Satellite Center
- Chungnam National University, College of Agriculture and Life Sciences
- Seoul National University Asia-Pacific Law Institute
- Chonnam National University, School of Mechanical Engineering Automobile Research Center

#### LAOS

- National University of Laos
- National Agriculture and Forestry Research Institute
- Champasack University

#### MALAYSIA

- MARA University of Technology, Faculty of Mechanical Engineering
- Universiti Putra Malaysia, Faculty of Science

#### MONGOLIA

- National University of Mongolia

- Mongolian University of Science and Technology
- Ministry of Health and Sports, Mongolia
- The Ministry of Environment and Tourism of Mongolia
- Mongolian National University of Medical Sciences
- Mineral Resources and Petroleum Authority of Mongolia, Geological Information Center
- National Legal Center of Mongolia
- Mongolian University of Science and Technology, School of Geology and Petroleum Engineering
- Mongolian Academy of Sciences, Institute of Geography
- Mongolian Academy of Sciences, Institute of Philosophy, Sociology and Law
- Institute of Meteorology, Hydrology and Environment, Mongolia
- Mongolian National University of Education

#### MYANMAR

- University of Yangon
- The University of Medicine 1, Yangon

#### NEPAL

- Kathmandu University, School of Science

#### PHILIPPINES

- University of the Philippines, Los Banos
- University of the Philippines
- University of the Philippines, Diliman
- University of the Philippines, Manila, UP College of Nursing
- Gokongwei College of Engineering, De La Salle University

#### SINGAPORE

- Nanyang Technological University
- Singapore Management University
- National University of Singapore
- National University of Singapore, Yong Loo Lin School of Medicine, Alice Lee Centre for Nursing Studies
- National University of Singapore, NUS Business School
- National University of Singapore, Office of Safety, Health & Environment
- National University of Singapore, Center for Quantum Technologies
- Nanyang Technological University, National Institute of Education
- National University of Singapore Centre for Asian Legal Studies (CALS)
- National University of Singapore, Yong Loo Lin School of Medicine

#### SRI LANKA

- University of Sri Jayawardanapura, Faculty of Humanities and Social Sciences

#### TAIWAN

- National Taiwan University
- National Chengchi University
- National Tsing Hua University
- National Chung Cheng University
- National Chengchi University, College of Law
- National Taiwan Normal University, College of Education
- Soochow University, School of Law
- Soochow University, School of Foreign Languages and Cultures
- National Taiwan University, Department of Atmospheric Sciences
- Taiwan Ocean Research Institute
- National Chiao Tung University, College of Electrical and Computer Engineering
- National Chung Cheng University, Center for International Affairs and Exchange
- National Center for Theoretical Sciences, Mathematics Division
- National Central University, College of Science
- Academia Sinica, Institute of Chemistry

- Fu Jen Catholic University, College of Foreign Languages

#### THAILAND

- Kasetsart University
- Chulalongkorn University
- Chulabhorn Research Institute/ Chulabhorn Graduate Institute
- Rajamangala University of Technology Thanyaburi
- Bangkok Dusit Medical Services Public Company Limited
- King Mongkut's University of Technology North Bangkok, Science and Technology Research Institute
- Thammasat University, Faculty of Economics
- Mahidol University, ASEAN Institute for Health Development
- Chiang Mai University, Faculty of Economics
- Mahidol University, Faculty of Medicine Ramathibodi Hospital
- HRH Princess Chulabhorn College of Medical Science
- Kasetsart University, Faculty of Agriculture and the Faculty of Agriculture at Kamphaeng Saen [JD]

#### VIETNAM

- Hanoi University of Science and Technology
- Vietnam National University, Hanoi
- The Ministry of Justice of the Socialist Republic of Viet Nam
- Vietnam Institute of State and Law
- Hanoi Law University
- Ho Chi Minh City University of Law
- Vietnamese Academy of Science and Technology, Ho Chi Minh City Institute of Resources Geography
- Vietnam National University- Ho Chi Minh City, University of Science, Faculty of Environmental Science
- Foreign Trade University
- Hue University of Medicine and Pharmacy
- Vietnam Academy of Science and Technology, Institute of Mathematics
- University Medical Center, Ho Chi Minh City

#### Pacific

#### AUSTRALIA

- University of Sydney
- Monash University
- Flinders University
- University of South Australia
- The University of Adelaide
- The Australian National University
- The University of Western Australia
- University of New South Wales
- The University of Melbourne, Asian Law Centre
- Commonwealth Scientific and Industrial Research Organization, Division of Ecosystem Sciences (CSIRO)
- The University of Adelaide, Faculty of Health Sciences [JD]

#### NEW ZEALAND

- National Institute of Water and Atmospheric Research
- University of Auckland, Center for Geophysical Research
- University of Canterbury, Faculty of Science

#### Europe

#### ARMENIA

- Yerevan Physics Institute

#### AUSTRIA

- University of Innsbruck
- Johannes Kepler University Linz, Faculty of Law
- The Medical University of Vienna

- FH JOANNEUM Gesellschaft mbH University of Applied Sciences
- Universität Klagenfurt, Institute of Social Ecology, Faculty for Interdisciplinary Studies

#### BELGIUM

- KU Leuven

#### BULGARIA

- Sofia University, Department of Astronomy
- Bulgarian Academy of Sciences, Institute of Electronics and Space Research Institute, Space Astronomy Division
- Bulgarian Academy of Sciences, Institute of Mathematics

#### CZECH REPUBLIC

- Czech Technical University in Prague

#### DENMARK

- University of Copenhagen
- Aarhus University

#### FINLAND

- Finnish Meteorological Institute, Department of Geophysics

#### FRANCE

- Université de Strasbourg
- Ecole Nationale des Ponts et Chaussées (ENPC)
- Université Paris Diderot-Paris 7
- Université Jean Moulin-Lyon 3
- Communauté Université Grenoble Alpes\*
- Université Paris-Est
- École Normale Supérieure de Lyon
- Fondation Maison des Sciences de l'Homme
- Aix-Marseille Université
- Université Paris-Sud
- Université Panthéon Assas, Paris 2
- École Nationale Supérieure d'Architecture Paris Val-de-Seine
- Université de Technologie de Belfort-Montbéliard
- Université de Reims Champagne-Ardenne
- University of Clermont Auvergne
- \* Université Grenoble Alpes (UGA), Institut polytechnique de Grenoble (Grenoble INP), Institut d'Études Politiques de Grenoble (IEP), Ecole Nationale Supérieure d'Architecture de Grenoble (ENSAG), Université Savoie Mont Blanc (USMB), Centre national de la recherche scientifique (CNRS), Commissariat à l'énergie atomique et aux énergies alternatives (CEA), Institut national de recherche en informatique et en automatique (INRIA), Doctoral College from the Communauté Université Grenoble Alpes

#### GERMANY

- Technische Universität Braunschweig
- Technische Universität München
- Technische Universität Chemnitz
- University of Freiburg
- RWTH Aachen
- University of Freiburg, Faculty of Economics and Behavioral Sciences
- University of Cologne, I Physical Institute
- Johannes Gutenberg University Mainz, Faculty of Chemistry, Pharmaceutical Sciences and Geoscience
- German Aerospace Center, Institute of Aerospace Medicine
- University of Ulm, Faculty of Mathematics and Economics
- University of Freiburg, Faculty of Medicine
- University of Regensburg, Faculty of Law
- University of Münster, Faculty of Chemistry and Pharmacy
- Ruhr-Universität Bochum, Faculty of Physics and Astronomy and Faculty of Electrical Engineering and Information Technology
- Technische Universität Kaiserslautern, Faculty of Architecture, Spatial and Environmental Planning and Civil Engineering
- Freie Universität Berlin, Environmental Policy Research Centre

- The Research Center for Eastern and South Eastern Europe in Regensburg, Institute for East European Law
- Technische Universität Darmstadt, Department of Civil Engineering and Geodesy
- Ruhr Universität Bochum, Faculty of Mathematics
- University of Duisburg-Essen, Institute of East Asian Studies
- Fraunhofer Institute for Chemical Technology ICT, Fraunhofer-Gesellschaft
- CFK Valley Stade e.V.
- EBS Law School
- Johannes Gutenberg University Mainz, Faculty of Physics, Mathematics and Computer Science
- Leibniz Institute of Ecological Urban and Regional Development
- University of Freiburg, Faculty of Medicine [JD]
- Innovations for High Performance Microelectronics (IHP)
- Heinrich Heine University Duesseldorf, Faculty of Mathematics and Natural Sciences
- Forschungszentrum Jülich GmbH
- University of Applied Sciences Kempten

## HUNGARY

- Hungarian Academy of Sciences, Institute for Legal Studies

## ICELAND

- University of Iceland

## ITALY

- National Institute of Nuclear Physics (INFN)
- University of Catania
- University of Bologna
- Sapienza University of Rome
- University of Padova, Department of Information Engineering
- University of Padova, Department of Civil, Environmental and Architectural Engineering
- University of Modena and Reggio Emilia, Department of Sciences and Methods for Engineering

## KAZAKHSTAN

- Kazakh Humanitarian and Law University
- Legislation Research Institute, Republic of Kazakhstan

## LATVIA

- Latvian State University

## NETHERLANDS

- University of Twente
- Radboud University

## NORWAY

- University of Oslo
- University of Tromsø, Faculty of Science
- Norwegian University of Science and Technology, Faculty of Medicine and Health Science

## POLAND

- University of Warsaw
- Institute of High Pressure Physics (UNIPRESS), Polich Academy of Sciences
- Medical University of Gdańsk
- Warsaw University of Technology
- Polish Academy of Sciences, Institute of Geological Sciences, Krakow Research Centre

## RUSSIA

- Ioffe Institute
- Rzhanov Institute of Semiconductor Physics Siberian Branch of Russian Academy of Sciences
- Institute of Theoretical and Experimental Physics
- Ministry of Health of Russia, Institute of Biomedical Problems
- Lomonosov Moscow State University, Faculty of Physics

- Moscow State Engineering and Physics Institute (Technical University-MEPHI)
- Russian Academy of Sciences, Institute of Computer Aided Design
- Russian Academy of Sciences, Far Eastern Branch, Institute of Cosmophysical Research and Radiowave Propagation (IKIR)
- Russian Academy of Sciences, Siberian Branch, Institute of Solar-Terrestrial Physics (ISTP)
- M.V. Lomonosov Moscow State University, Department of Chemistry
- Russian Academy of Sciences, Siberian Branch, YuG. Shafer Institute of Cosmophysical Research and Aeronomy (IKFIA)
- The Polar Geophysical Institute, Murmansk

## SPAIN

- University of Barcelona
- Institute of Space Studies of Catalonia (IEEC)
- Basque Centre for Climate Change

## SWEDEN

- Uppsala University
- Royal Institute of Technology
- Lund University, Faculty of Law
- Swedish Institute of Space Physics
- SAFER - Vehicle and Traffic Safety Centre at Chalmers
- Lund University, Faculty of Medicine [JD]

## SWITZERLAND

- University of Geneva
- University of Bern, Interdisciplinary Center for General Ecology (IKAOe)

## U.K.

- The University of Sheffield
- The University of Warwick
- University of Bristol
- University of London, School of Oriental and African Studies (SOAS)
- The University of Leeds
- The University of Edinburgh
- University of Cambridge, St John's College
- University of St Andrews
- Durham University
- The University of Nottingham, School of Biosciences
- University of East Anglia, Faculty of Social Sciences, School of International Development
- The University of Manchester, Faculty of Life Sciences
- University of Leicester, Department of Physics and Astronomy
- The University of Oxford, Department of Physics
- The University of Manchester, School of Environment & Development
- The University of Warwick
- The University of Edinburgh, College of Science & Engineering, School of Chemistry
- The University of Edinburgh, Higgs Centre for Theoretical Physics
- The University of Edinburgh, College of Science and Engineering[JD]
- University of Glasgow

## UKRAINE

- Ukrainian Academy of Sciences, Institute of Theoretical Physics

## UZBEKISTAN

- Tashkent State University of Law (TSUL)
- University of World Economy and Diplomacy
- Tashkent State Technical University named after Abu Raykhan Beruniy
- The Academy of Public Administration under the President of the Republic of Uzbekistan
- Samarkand State University

## North America

### CANADA

- York University
- University of Toronto, the Faculty of Arts and Science
- Université de Montréal
- University of Alberta
- University of Calgary
- University of Ottawa
- Carleton University, Faculty of Science
- University of Toronto, Ontario Institute for Studies in Education (OISE)
- University of Victoria, Centre for Asia-Pacific Initiatives

### USA

- Oberlin College
- North Carolina State University
- Harvard-Yenching Institute
- University of Cincinnati
- St. Olaf College
- Southern Illinois University, Carbondale
- University of Illinois at Urbana-Champaign
- New York University
- University of Kentucky
- University of Minnesota
- University of California, Los Angeles
- The University of North Carolina at Chapel Hill
- University of California, Davis
- University of California, Berkeley
- University of Florida
- Iowa State University
- University of Oregon
- University of Michigan, College of Engineering
- University of California, Los Angeles, Department of Education
- University of Houston, Cullen College of Engineering
- University of California, Berkeley, Department of Physics
- University of North Carolina at Chapel Hill, School of Medicine
- University of California Berkeley, College of Natural Resources
- University of Alaska Fairbanks, Geophysical Institute
- National Oceanic and Atmospheric Administration, Space Environment Laboratory
- National Oceanic and Atmospheric Administration, National Geophysical Data Center
- Massachusetts Institute of Technology, Haystack Observatory
- Harvard Medical School
- Tulane University, School of Medicine
- University of Pennsylvania, School of Medicine
- University of California, San Diego, Center for Astrophysics and Space Sciences
- Colorado School of Mines
- University of Alaska Fairbanks, Geophysical Institute
- Duke University, School of Medicine
- Johns Hopkins University, School of Medicine
- University of Wisconsin Law School
- University of Wisconsin Law School, East Asian Legal Studies Center
- University of Maryland, Department of Mechanical Engineering
- University of Washington, Genetically Engineered Materials Science and Engineering Center
- University of California, Los Angeles, California NanoSystems Institute
- Northwestern University, Materials Research Institute
- University of California, Berkeley, Center for Global Metropolitan Studies
- Michigan State University, Department of Physics and Astronomy
- Green Mountain College

- University of California, Santa Barbara, Bren School of Environmental Science and Management
- University of Michigan, College of Engineering, Macromolecular Science and Engineering Center
- University of Pittsburgh, School of Education
- The Ohio State University, Center for Cosmology and AstroParticle Physics; College of Arts and Sciences, Department of Physics and Department of Astronomy
- Virginia Polytechnic Institute and State University, Center for Space Science and Engineering Research
- University of Colorado Boulder, Laboratory for Atmospheric and Space Physics
- University of Washington, College of Engineering
- The University of Akron, School of Law
- The Ohio State University, College of Education and Human Ecology
- University of Michigan, College of Literature, Science, and the Arts, Department of Chemistry
- The Ohio State University, Translational Data Analytics
- Mississippi State University, Center for Advanced Vehicular Systems (CAVS)

## Latin America and the Caribbean

### ARGENTINE

- National University of Rosario, Faculty of Biochemical and Pharmaceutical Sciences
- Luis F. Leloir, Campomar Foundation, The Research Institute of Biochemistry

### BOLIVIA

- Universidad Mayor de San Andres, La Paz, Faculty of Sciences, Chacaltaya Cosmic Ray Observatory

### BRAZIL

- Universidade de Brasília
- Universidade de São Paulo
- National Institute for Space Research
- Fundacao Joaquim Nabuco

### GUATEMALA

- Del Valle de Guatemala University,School of Engineering

### HONDURAS

- Honduran Institute of Anthropology and History in Honduras

### MEXICO

- Universidad Nacional Autonoma de Mexico
- Universidad de Sonora
- Autonomous University of Nuevo Leon

## Middle East

### IRAN

- University of Kurudistan, Faculty of Engineering
- University of Kurdistan, Institute of Materials and Systems for Sustainability

### TURKEY

- Bilkent University
- Istanbul Technical University

### ISRAEL

- Tel Aviv University Raymond and Beverly Sackler School of Physics and Astronomy

## Africa

### EGYPT

- Cairo University
- Tanta University, Faculty of Engineering
- Assiut University, Faculty of Science

## GHANA

- University of Ghana, Faculty of Social Studies

## KENYA

- University of Nairobi
- African Institute for Capacity Development (AICAD)

## SOUTH AFRICA

- Stellenbosch University
- South African Astronomical Observatory
- The Human Sciences Research Council (HSRC)

## International Organization

- Southeast Asian Regional Center for Graduate Study and Research in Agriculture (SEARCA)
- European Organization for Nuclear Research (CERN)
- United Nations Centre for Regional Development (UNCRD)
- International Institute for the Unification of Private Law

## Multilateral

- Chulalongkorn University (Thailand); Hanoi University of Science and Technology (Vietnam) and National University of Laos (Laos)
- Tashkent State Technical University named after Abu Raykhan Beruniy (Uzbekistan); University of Tsukuba (Japan)
- The University of Adelaide, Faculty of Health Sciences (Australia); University of Freiburg, Faculty of Medicine (Germany)
- Jus Commune Triangle Agreement for Academic Exchange (Establishment of a supportive core for CAMPUS Asia and Cooperation)

## Agreements for Industry-University Collaboration

## Europe

### U.K.

- University of Warwick
- NCC Operations Ltd. as legal entity for the University of Bristol National Composites Centre

## North America

### USA

- North Carolina State University

## Multilateral

- Pôle EMC2 (France); IRT Jules Verne (France); Gifu University, Composite Materials Center (Japan); Kanazawa Institute of Technology, Innovative Composite Materials Research and Development Center (Japan)

## Agreement for International Joint Research

## Asia

### REPUBLIC OF KOREA

- Sungkyunkwan University, Center for Advanced Plasma Surface Technology

## Agreements for Internship

## International Organization

- Food and Agriculture Organization of the United Nations (FAO)
- The United Nations Educational Scientific and Cultural Organization, Asia and the Pacific Regional Bureau for Education (UNESCO Bangkok)
- The International Organization for Migration (IOM)

## Memorandum of Understanding on the Establishment of the Office

## Asia

### THAILAND

- Chulalongkorn University, Research Services Center of Petroleum and Petrochemical College

## International Networks

- Academic Consortium 21 (AC21)
- Association of Pacific Rim Universities (APRU)
- Japan Academic Network in Europe(JANET)
- Japan-Canada Academic Consortium(JACAC)
- Japanese-Swedish University Connection (MIRAI)
- Japan-UK Research and Education Network for Knowledge Economy Initiatives(RENKEI)
- Japanese University Network in the Bay Area (JUNBA)
- Open Education Consortium
- University Based Institute for Advanced Study (UBIAS)
- University Mobility in Asia and the Pacific(UMAP)

## Overseas Research and Education Bases

- China Center for International Exchange (Shanghai, China)
- Uzbekistan Office (Tashkent, Uzbekistan)
- European Center (Freiburg, Germany)
- Bangkok Office (Bangkok, Thailand)
- Technology Partnership, Inc. (North Carolina, USA)
- Centers for research and education in the field of law(Tashkent, Uzbekistan • Ulaanbaatar, Mongolia • Hanoi/Ho Chi Minh City, Vietnam • Phnom Penh, Cambodia • Yangon, Myanmar • Yogyakarta, Indonesia • Vientiane, Laos)
- Field Research Center(Ulaanbaatar, Mongolia)
- Asian Satellite Campuses Institute (Phnom Penh, Cambodia/Ulaanbaatar, Mongolia/Hanoi, Vietnam/Tashkent, Uzbekistan/Vientiane,Laos/Los Banos, Philippine)
- Nagoya University/Mongolian National University of Education Joint Support Center for Child Development(Ulaanbaatar, Mongolia)
- The Cooperative Center for Resilience Research, National University of Mongolia and Nagoya University (Ulaanbaatar, Mongolia)



# International Exchange

## International Students by Country / Region

		FY2017		
<b>Asia</b>	Bangladesh	26		
	Bhutan	4		
	Cambodia	77		
	China	1,162		
	East Timor	2		
	Hong Kong	22		
	India	37		
	Indonesia	106		
	Republic of Korea	254		
	Laos	24		
	Malaysia	55		
	Mongolia	61		
	Myanmar	31		
	Nepal	7		
	Pakistan	5		
	Philippines	36		
	Singapore	20		
	Sri Lanka	17		
	Taiwan	90		
	Thailand	119		
Vietnam	142			
<b>Subtotal</b>	<b>2,297</b>			
<b>Pacific</b>	Australia	26		
	Fiji	1		
	Republic of the Marshall Islands	1		
	New Zealand	1		
	Palau	1		
	Papua New Guinea	3		
	Samoa	2		
	Solomon Islands	1		
	Kingdom of Tonga	2		
	<b>Subtotal</b>	<b>38</b>		
	<b>Europe</b>	Armenia	1	
		Austria	2	
		Azerbaijan	1	
		Bulgaria	3	
Belgium		1		
Republic of Cyprus		1		
Republic of Croatia		1		
Czech Republic		1		
Denmark		4		
Estonia		2		
Finland		4		
France		28		
Germany		45		
Greece		3		
Hungary		3		
Republic of Iceland		4		
Italy		13		
Kazakhstan		5		
Kyrgyz Republic		1		
Latvia	1			
Republic of Lithuania	1			
Montenegro	1			
Netherlands	1			
Norway	5			
Poland	10			
Romania	4			
Russia	9			
Serbia	1			
Slovak Republic	2			
Spain	5			
Sweden	10			
Switzerland	3			
U.K.	30			
Ukraine	5			
Uzbekistan	38			
<b>Subtotal</b>	<b>249</b>			
<b>North America</b>	Canada	15		
	United States	91		
	<b>Subtotal</b>	<b>106</b>		
<b>Latin America and the Caribbean</b>	Argentina	3		
	Brazil	17		
	Chile	1		
	Colombia	3		
	Republic of Costa Rica	1		
	Ecuador	3		
	El Salvador	1		
	Honduras	1		
	Jamaica	2		
	Mexico	10		
	Peru	10		
	Uruguay	2		
	Venezuela	2		
	<b>Subtotal</b>	<b>56</b>		
<b>Middle East</b>	Afghanistan	22		
	Bahrain	1		
	Iran	7		
	Israel	2		
	Lebanese Republic	2		
	Oman	1		
	Saudi Arabia	3		
	Syria	2		
	Turkey	14		
	Yemen	3		
	<b>Subtotal</b>	<b>57</b>		
	<b>Africa</b>	Algeria	2	
		Benin	2	
		Cameroon	2	
		The Democratic Republic of the Congo	3	
		Egypt	22	
		State of Eritrea	1	
		Ethiopia	5	
		Republic of The Gambia	1	
		Ghana	4	
		Guinea	1	
		Ivory Coast	4	
Kenya		4		
Madagascar		1		
Malawi		1		
Republic of Mali		1		
Kingdom of Morocco		5		
Mozambique		7		
Nigeria		8		
Senegal		2		
Seychelles		1		
Tanzania		2		
Tunisia		2		
Uganda	2			
Republic of Zimbabwe	1			
Zambia	1			
<b>Subtotal</b>	<b>85</b>			
<b>Total (115 Countries / Regions)</b>	<b>2,888</b>			

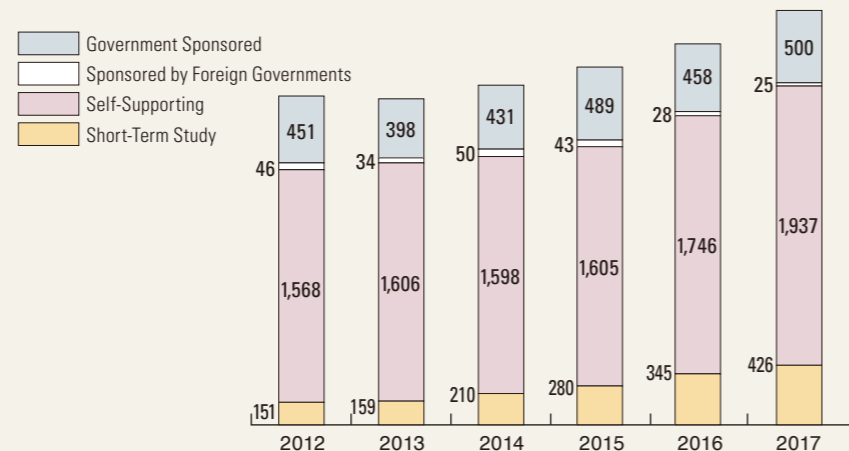
\*Regional classification is based on the standards of the Ministry of Foreign Affairs in Japan.

## International Students by School

School / Graduate School	FY2017
Humanities	359
Education	83
Law	356
Economics	201
Informatics	102
Informatics and Sciences	8
Science	137
Medicine	190
Engineering	540
Agricultural Sciences	163
International Development	218
Mathematics	14
Languages and Cultures	76
Environmental Studies	214
Information Science	44
Pharmaceutical Sciences	4
Institute of Materials and Systems for Sustainability	2
Institute for Space-Earth Environmental Research	5
Research Institute of Environmental Medicine	3
Research Center of Health, Physical Fitness and Sports	1
International Education & Exchange Center	95
International Language Center	67
Student Exchange Division	6
<b>Total</b>	<b>2,888</b>

## International Students by Funding Source

	2012	2013	2014	2015	2016	2017
Government Sponsored	451	398	431	489	458	500
Sponsored by Foreign Governments	46	34	50	43	28	25
Self-Supporting	1,568	1,606	1,598	1,605	1,746	1,937
Short-Term Study	151	159	210	280	345	426
<b>Total</b>	<b>2,216</b>	<b>2,197</b>	<b>2,289</b>	<b>2,417</b>	<b>2,577</b>	<b>2,888</b>



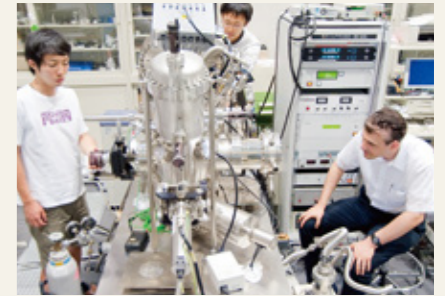
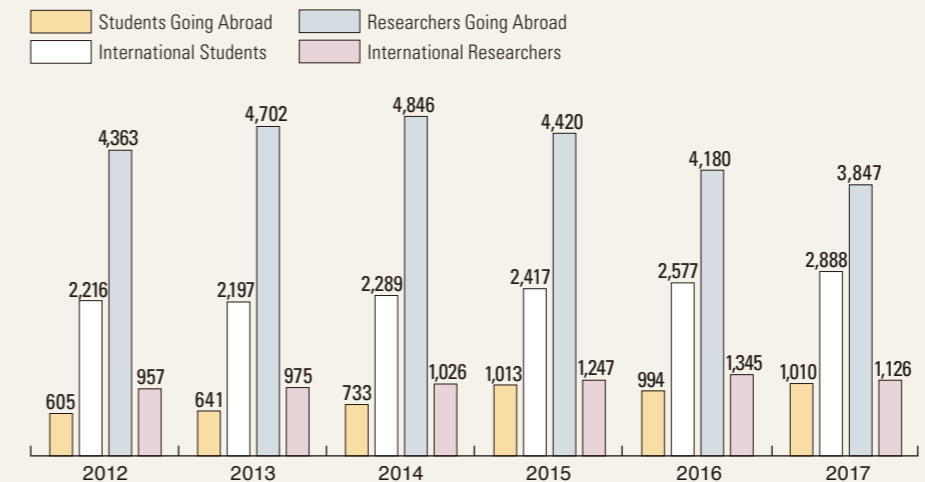
## Students Going Abroad by Country / Region

<b>Asia</b>	Cambodia	57	
	China	53	
	Hong Kong	5	
	India	8	
	Indonesia	39	
	Republic of Korea	52	
	Laos	24	
	Malaysia	18	
	Mongolia	30	
	Myanmar	10	
	Nepal	9	
	Philippines	26	
	Singapore	13	
	Sri Lanka	1	
<b>Pacific</b>	Australia	63	
	Kingdom of Tonga	1	
	New Zealand	3	
	Papua New Guinea	1	
	<b>Subtotal</b>	<b>68</b>	
	<b>Europe</b>	Austria	10
		Belgium	1
		Denmark	6
		France	49
		Germany	61
		Greece	3
		Iceland	2
		Italy	7
		Netherlands	2
Kyrgyzstan		6	
Norway		6	
Poland		5	
Portugal		1	
Russia		4	
Spain		3	
Sweden		8	
Switzerland		13	
<b>Europe</b>		U.K.	42
		Uzbekistan	18
	Poland	5	
	Portugal	1	
	Russia	4	
	Spain	3	
<b>North America</b>	Canada	34	
	United States	159	
	<b>Subtotal</b>	<b>193</b>	
	<b>Latin America and the Caribbean</b>	Chile	2
		Colombia	3
		Mexico	2
Nicaragua		1	
<b>Subtotal</b>	<b>8</b>		
<b>Middle East</b>	Iran	1	
	<b>Subtotal</b>	<b>1</b>	
<b>Africa</b>	Cameroon	2	
	Egypt	2	
	Ghana	2	
	Kenya	7	
	Mozambique	1	
	Nigeria	3	
	Republic of South Africa	2	
	The Democratic Republic of the Congo	1	
	Uganda	2	
	<b>Subtotal</b>	<b>22</b>	
	<b>Total (56 Countries / Regions)</b>	<b>1,010</b>	

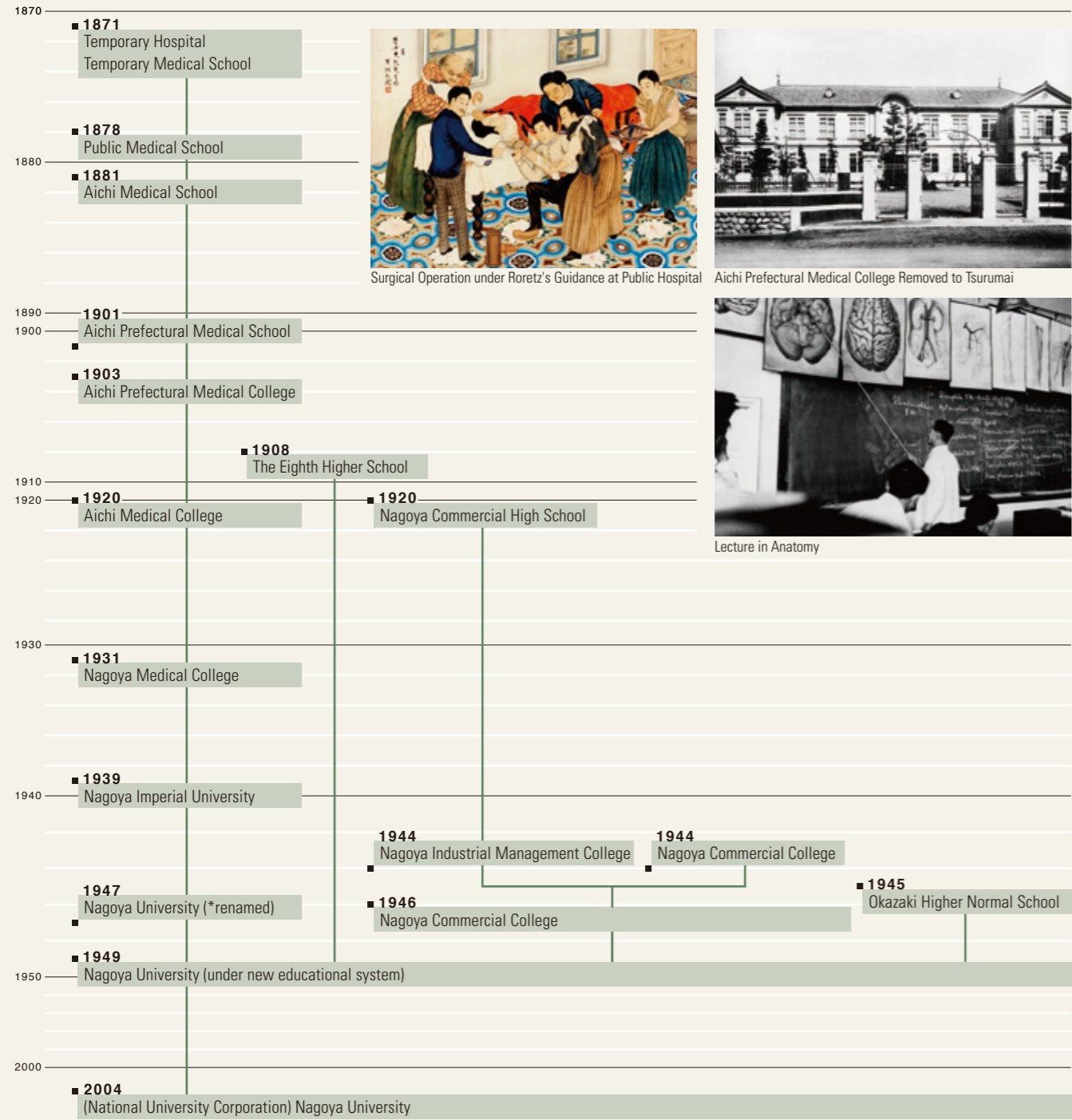
\*Regional classification is based on the standards of the Ministry of Foreign Affairs in Japan.

## Trends of International Exchange

	2012	2013	2014	2015	2016	2017
Students Going Abroad	605	641	733	1,013	994	1,010
International Students	2,216	2,197	2,289	2,417	2,577	2,888
Researchers Going Abroad	4,361	4,702	4,846	4,420	4,180	3,847
International Researchers	957	975	1,026	1,247	1,345	1,126



# Historical Chart



Surgical Operation under Roretz's Guidance at Public Hospital



Aichi Prefectural Medical College Removed to Tsurumai



Lecture in Anatomy

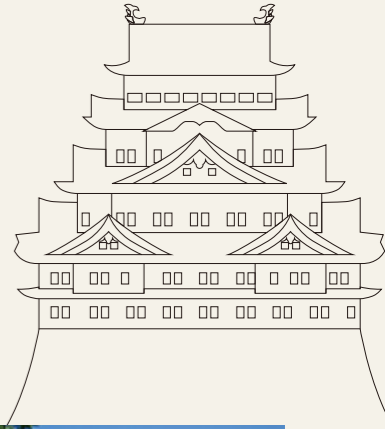
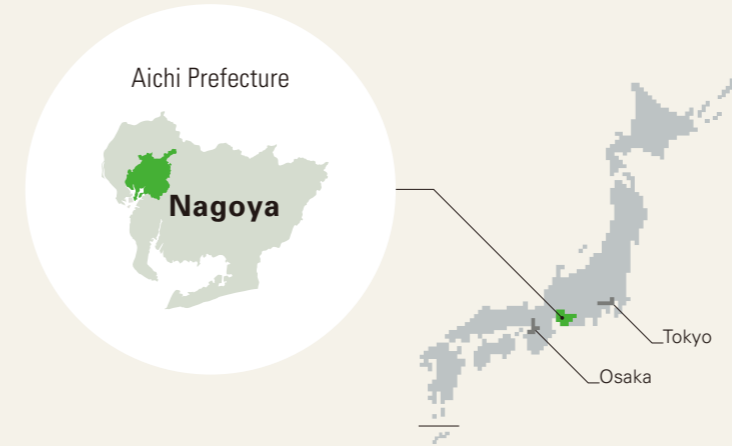


Toyoda Auditorium (around 1960)

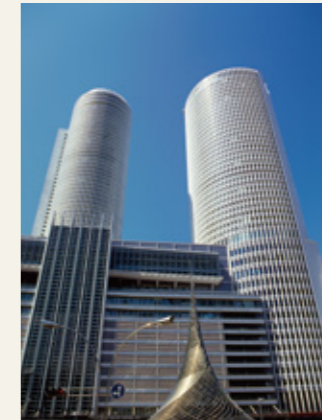


Toyoda Auditorium (2010)

# The City of Nagoya



- ✓ Nagoya City is one of the top-ranking economies worldwide, boasting leading industries in automotive manufacturing, machinery, electronics and ceramics.
- ✓ The Chubu area of Japan is particularly renowned as the home of Oda Nobunaga, Toyotomi Hideyoshi and Tokugawa Ieyasu, three leaders who unified Japan over 400 years ago, bringing an end to the "Period of Warring States."
- ✓ Nagoya Castle, originally built by Tokugawa Ieyasu and famous for the golden dolphins found on its donjon, serves as the landmark of the region.



JR Central Towers



Nagoya Castle



Nagoya Noh Theater



Arimatsu Shibori Matsuri (festival)



Nagoya City Archives



The Golden Dolphin



Nagoya Congress Center



Nagoya Port Triton



Nagoya City Art Museum



OASIS 21