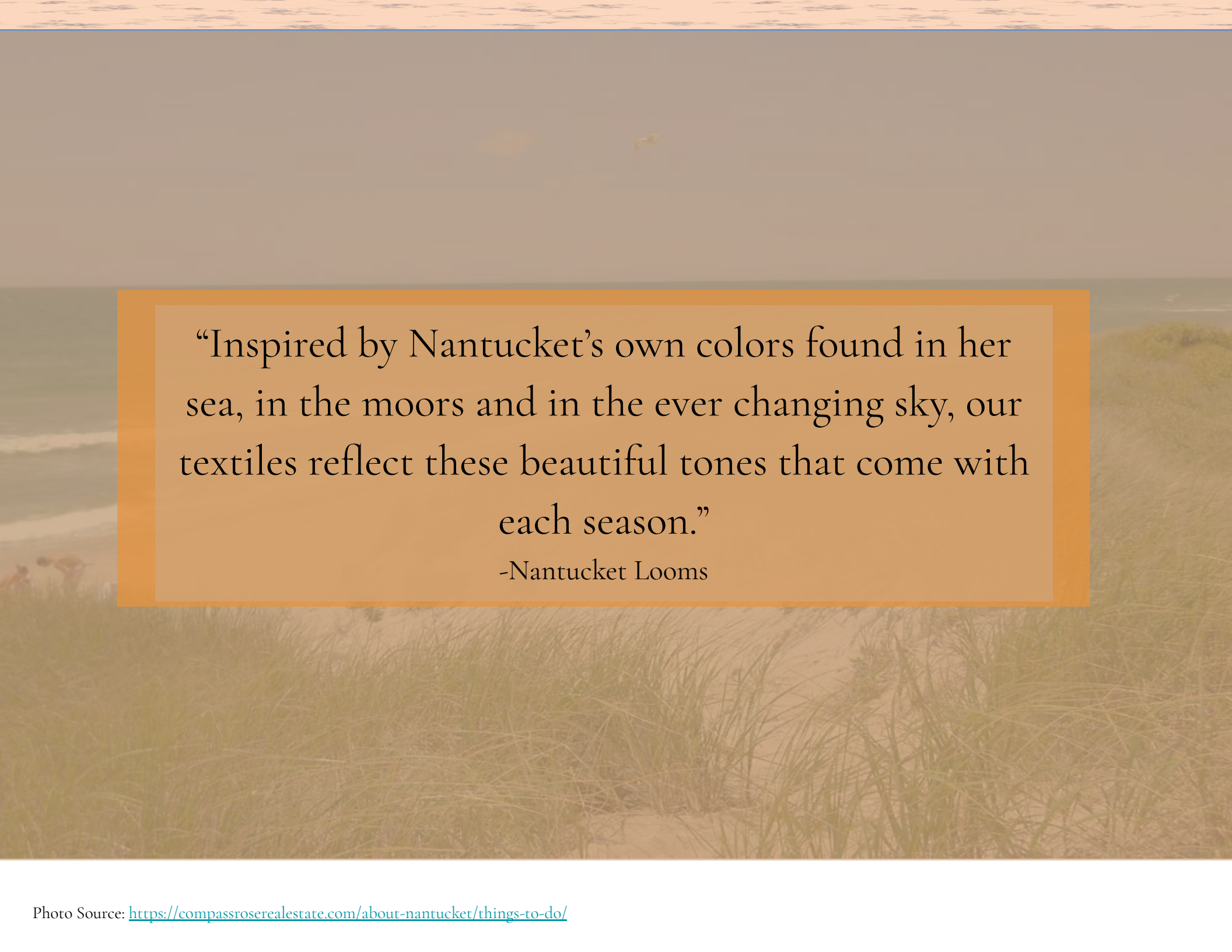


NANTUCKET TEXTILES

MAY 2022

Research Provided by:
Michael Graves College
at Kean University



“Inspired by Nantucket’s own colors found in her sea, in the moors and in the ever changing sky, our textiles reflect these beautiful tones that come with each season.”

-Nantucket Looms

Brief History of Nantucket Looms' Early Development

Early 1960s

In the early 1960s, the Nantucket Historical Trust (established in 1957 by Walter Beinecke Jr., George Jones, and Henry Coleman “for the purchase of preserving, restoring, repairing, or maintaining buildings...of historical significance or of educational, aesthetic, or cultural value on Nantucket.”) purchased and preserved the iconic downtown building at 16 Main Street and the Old Ocean House hotel at 29 Broad Street.

1968

In 1962, the Historical Trust formed the Cloth Company of Nantucket and an affiliated division, Nantucket Looms, under the management of Andy Oates at 16 Main Street. The company crafted bedspreads, draperies, rugs, and placemats exclusively for the Jared Coffin House project. The demand for fine textiles and handmade crafts grew steadily. Business prospered. Under the wording of its charter, the trust was “obligated to relinquish control over projects when they are established to the point of becoming commercial,” so in April of 1968, Bill Euler and Andy Oates gained ownership of the Nantucket Looms inventory and established it as a crafts-oriented enterprise.

mid-1970s

Nantucket experienced seminal change during the 1960s and 70s, but none felt as far-reaching as the reconstruction of the downtown and subsequent influx of artist and artisans that rejuvenated an art colony born a half-century earlier. Andrew Oates and Williams Euler worked at the core of this transformation. Andy and Bill’s impact upon a generation of Nantucket craftspeople and fine artists, and upon the interior decoration of the homes that their artworks graced, continues to be felt.



NHA Research: **Origins of Nantucket Looms**

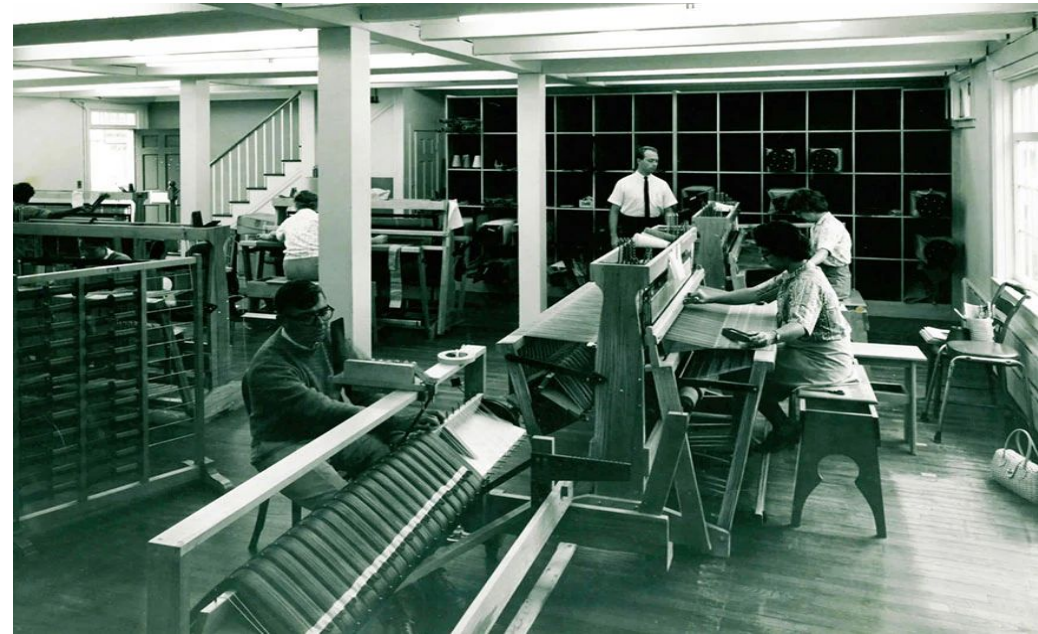
- Bill Euler and Andy Oates met in the late 1950's both sharing an interest in quality craftsmanship.
- In 1961 Nantucket Historical Trust (NHT) and Anne Beinecke approached Oates to help restore the Jared Coffin House.
- NHT then opened The Cloth Company with Euler and Oates leading in production.
- Euler and Oates took ownership of Nantucket Looms division of The Cloth Company (renaming it Nantucket Looms, Inc.) in 1968.
- They became integral forces in the island's revitalization because of their shop on Main Street and their mentoring of local artists.



Photo of the original Nantucket Looms Division.

NHA Research: Mary Ann Beinecke

- In 1961, Mary Ann Beinecke founded Nantucket School of Needlery, the only licensed needle arts school in the US.
- The mission of the School was to train local young women in the needle arts, creating a form of employment which offered to them careers on the island as instructors in the resident school and teachers for the School's Nantucket School of Needlery Home Study Course, which Beinecke wrote and illustrated in review with them
- Workshops were offered year-round in subjects such as tapestry, weaving, vegetal dye, spinning, bobbin lace, and silk screen printing.



“Mary Ann Beinecke and the Nantucket Historical Trust (NHT) approach Andy to restore what is today the Jared Coffin House. Andy designs and hand-weaves all textiles for the hotel. At the same time the NHT opens The Cloth Company with Andy and Bill at the helm, offering needlepoint, crewelwork and handwoven fabrics”.

NHA Research: **Mary Ann Video**



Source: [Mary Ann Beinecke Nantucket Textile Renaissance with Julie Stackpole](#)

NHA Research: Decor created by Nantucket Looms



Mohair Throws:

<https://www.nantucketlooms.com/collections/mohair-throws>

Placemats

<https://www.nantucketlooms.com/collections/handwoven-table-linens>

Pillows:

<https://www.nantucketlooms.com/collections/pillows>

NHA Research: Nantucket Looms Today

- Today, they continue to honor their island roots with a harmonious blend of the traditional and contemporary. Original, timeless Nantucket.
- They carry the works of over 80 local artisans, including painters, potters, woodcarvers, basket weavers, and jewelry makers.
- Each handwoven textiles starts with the winding of the bobbins, the threading the warp and the passing of the shuttle. Accent colors are delicately incorporated into each textile allowing the weaver to add their personal touch. The end result is a purposeful work of art.



51 Main Street Location





NHA Research Collections Artifact:

Cloth Fragment Fabric with Appliqued Pinwheels



NHA Research Collections: Cloth Fragment Fabric with Appliqued Pinwheels

Accession number: 2018.0011.012

Date(s) of creation: circa 1963

Materials: cotton, silk, wool

Dimensions: 59" x 37"

Background:

This fabric was made by Nantucket Looms from several fabrics that were woven by the company. The muslin-like coarse natural cotton was specifically mentioned in a 1965 article in American Fabrics trade magazine. Mary Ann Beinecke made a hostess skirt for herself out of this fabric.



Close Up Detail



Source:

[https://nantuckethistory.org/webcat/request/Action?SystemName=Nantucket+Historical+Association&UserName=public&Password=&CMD_\(DetailRequest\)\[o\]=&TemplateProcessID=6000_3635&ProcessID=1003_1518\(o\)&KeyValues=KEY_m15965](https://nantuckethistory.org/webcat/request/Action?SystemName=Nantucket+Historical+Association&UserName=public&Password=&CMD_(DetailRequest)[o]=&TemplateProcessID=6000_3635&ProcessID=1003_1518(o)&KeyValues=KEY_m15965)

Creative Ideas: Accent Arm Chair Design

Features:

Materials: Natural Cotton

The base of the chair reflects the wooden, metal structures used to create the looms.



**Applied Pinwheel
Textile in abstract form**

Rendering by **Tyla Daniel**
KU, Michael Graves College, Interior Design Student

NHA Research Collections: Nantucket Quilts



- As part of a comprehensive project to care for its extensive costume and textile collections, project specialist Jennifer Nieling at the Nantucket Historical Association has recently examined the significant holdings of quilts and coverlets, totaling about seventy-five pieces.
- The large quilt made by **Lucretia Coffin Mott**, a Nantucket-born Quaker, abolitionist, and women's rights activist, was donated in 1967 by Mrs. J. G. Richard Heckscher, a descendant of the famous feminist, from Devon, Pennsylvania.
- The quilt is completely hand sewn and is pieced with many small blocks of fabric, including diamonds, triangles, and a sunburst motif at the foot of the quilt.



NHA Research Collections Artifact:

Printed silk scarf - Scrimshaw Teeth on Yellow



NHA Research Collections: Printed silk scarf - Scrimshaw Teeth on Yellow

Accession number: 2018.0011.037

Date(s) of creation: circa 1966

Material: silk

Dimensions: 30" x 32"

Background:

Between 1965 and 1968, the Tilletts designed and produced a line of printed fabrics inspired by the Nantucket environment, including wildflowers, cranberries, seagulls, shells, gray cedar shingles, and even imagery found on historic objects at the Whaling Museum. This fabric design was inspired by objects that Leslie Tillett saw at the Whaling Museum on Nantucket.



Source:

[https://nantuckethistory.org/webcat/request/Action?SystemName=Nantucket+Historical+Association&UserName=public&Password=&CMD_\(DetailRequest\)\[o\]=&TemplateProcessID=6000_3635&ProcessID=1003_1518\(o\)&KeyValues=KEY_m15993](https://nantuckethistory.org/webcat/request/Action?SystemName=Nantucket+Historical+Association&UserName=public&Password=&CMD_(DetailRequest)[o]=&TemplateProcessID=6000_3635&ProcessID=1003_1518(o)&KeyValues=KEY_m15993)

NHA Research: Leslie and D.D. Tillett

- The Tilletts were based in New York City and they had a long list of high profile clients like Jacqueline Kennedy
- Explored the bold geometric patterns, exquisite textures, and vibrant colors of their designs, advanced a “mid-century modern” aesthetic that was both exotic and classic.
- They drew on forms and textures of **plants, animals, and sea life**, also borrowed from historic and cultural graphic representations from around the world.
- 1965 - The Tilletts became involved with Nantucket Looms.
 - They added many bright colors and new nature inspired patterns to the Looms.



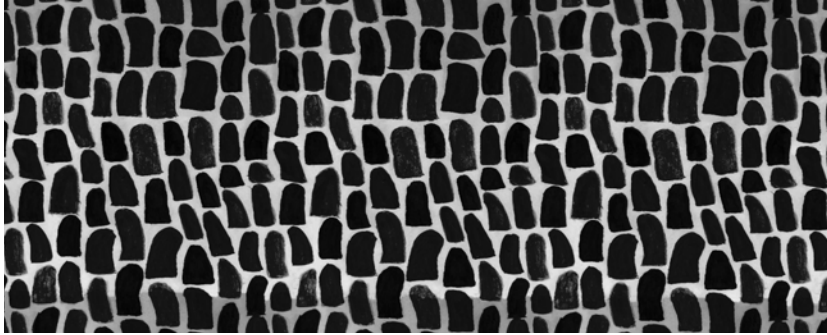
Textiles created by the Tilletts.

NHA Research: Textiles

- Nantucket has a history in the fiber arts, whether it be weaving, dying or printing. The early days of Nantucket, textiles, specifically home textiles were a mark of status and wealth.
- Wool was abundant with the sheep population and a vital part of life on the island. Beginning in the 1950's The Nantucket Cloth Company followed by The Nantucket Looms produced hand printed and woven fabrics for fashion and the home design industry.
- Indigo and shibori dyeing of textiles, hand blocked repeat pattern fabrics are just a few of the workshop offerings.



Creative Ideas: Textile Pattern



Scrimshaw Tooth Pattern

Inspired by the shape of the teeth on the Scrimshaw Printed Silk Scarf.



This colorway was inspired by the Pinwheel Cloth Fragment's colors.

Creative Ideas: Bedroom

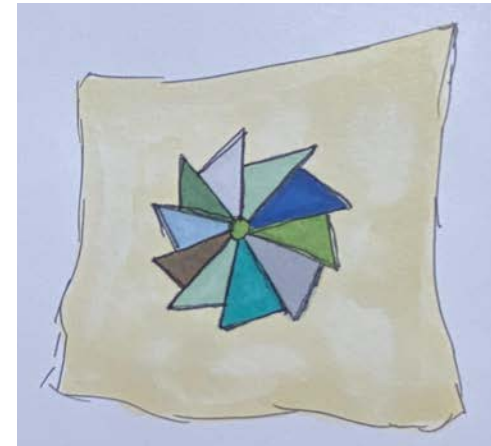


Features:

Bed frame and nightstand cut-outs inspired by Scrimshaw Teeth printed silk scarf.

Throw pillows using the pinwheel pattern.

Handwoven throw blanket from the one and only Nantucket Looms.



Close Up Detail

A home isn't a home without a serene place to rest after a day of swimming in the ocean or walking out on Main Street.



NHA Research Collections Artifact:

Nantucket Wildflowers Printed Fabric



NHA Research Collections:

Nantucket Wildflowers Printed Fabric

Accession number: 2018.0011.029

Date(s) of creation: 1966

Material:

Dimensions: 155" x 37"

Description:

Panel of heavy weight silk is silk screen printed with the Nantucket Wildflowers design in several bright colors. The design was printed with six screens, one for each color: dark green, green, pink, yellow, blue, and light red. The orange, purple, and dark red colors are made from overprinting yellow and pink, blue and pink, and yellow, pink, and light red. One edge is a selvage edge.

History:

Between 1965 and 1968, Leslie and D.D. Tillett designed and produced a line of printed fabrics inspired by the Nantucket environment. Leslie Tillett, with a family history of textile printing, had a deep knowledge of textile printing techniques, and often experimented with different colorways and traditional and labor-intensive methods such as batik and warp printing. One of the Nantucket designs was "Nantucket Wildflowers," designed after the Tilletts toured various places with local flora with the Beineckes and botanist Dave Carson.





NHA Research Collections Artifact:
Hooked Wall Hanging of a Map of Nantucket

NHA Research Collections: Hooked wall hanging of a map of Nantucket

Accession number: 1970.0011.001

Date(s) of creation: 1969

Materials: wool, burlap

Dimensions: 37" x 52 1/2"

Background:

Designed by Clarence A. Lundquist in February 1968 and hooked in wool by his second wife, Anne (Rasmussen) Lundquist in 1969. She received a copyright for the design (#GU 45189) April 13, 1970.



Front



Back

Close Up Details



Source:

[https://nantuckethistory.org/webcat/request/Action?SystemName=Nantucket+Historical+Association&UserName=public&Password=&CMD_\(DetailRequest\)\[o\]=&TemplateProcessID=6000_3635&ProcessID=1003_1518\(o\)&KeyValues=KEY_m1022](https://nantuckethistory.org/webcat/request/Action?SystemName=Nantucket+Historical+Association&UserName=public&Password=&CMD_(DetailRequest)[o]=&TemplateProcessID=6000_3635&ProcessID=1003_1518(o)&KeyValues=KEY_m1022)

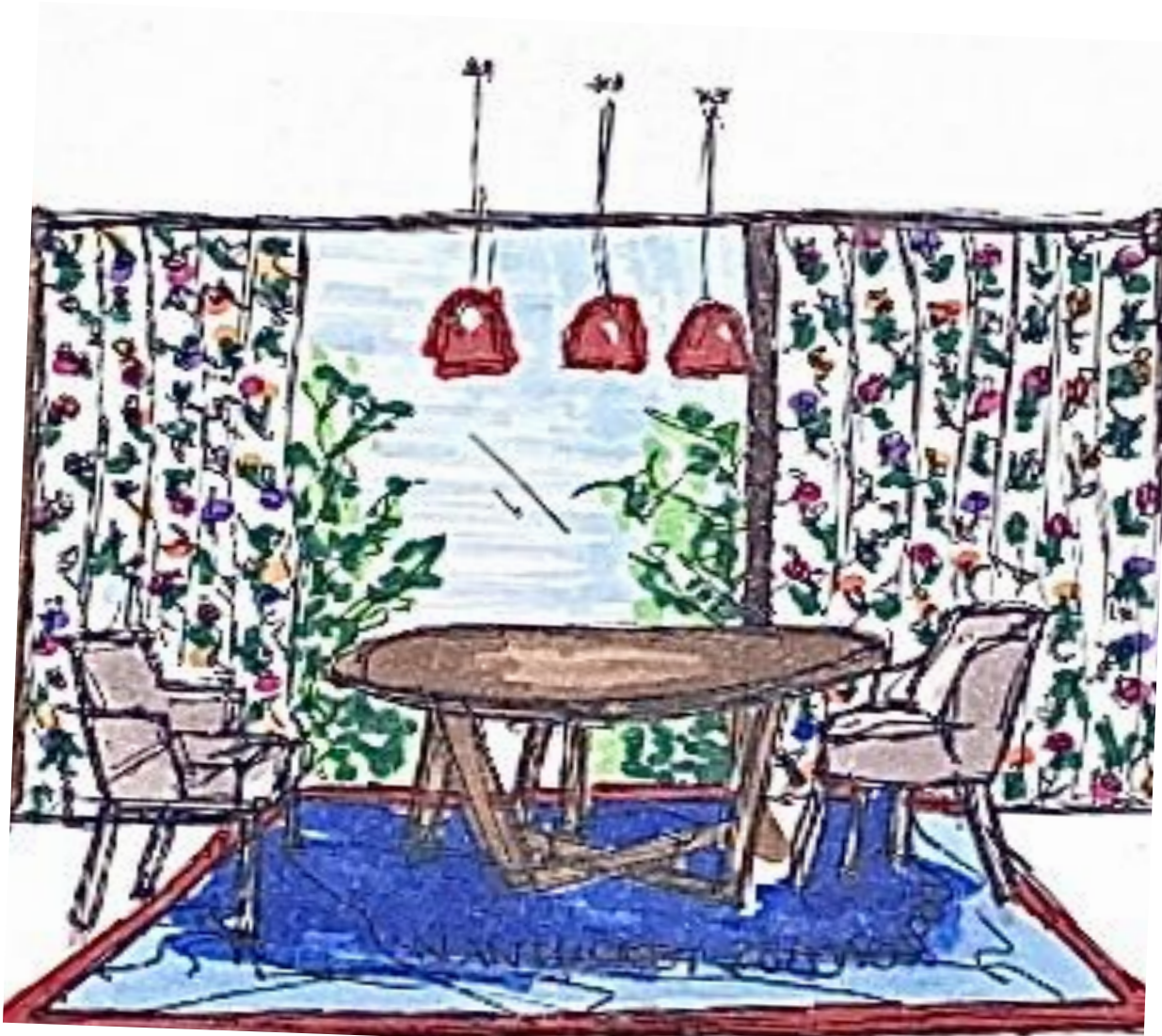
Creative Ideas: Living Room Design

Living Room design inspired by Nantucket Quilts by Lucretia Coffin Mott and Map of Nantucket textile.



Rendering by Tyla Daniel
KU, Michael Graves College, Interior Design Student

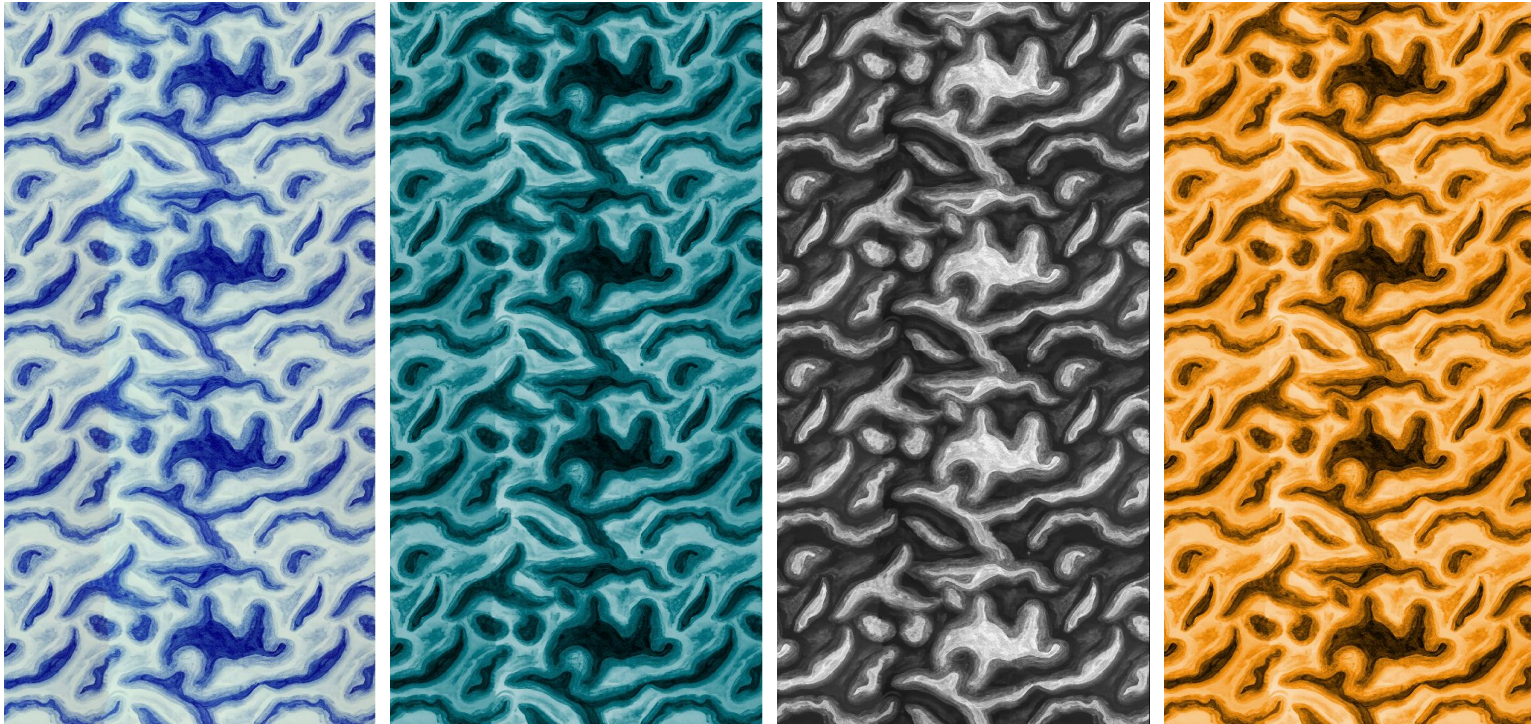
Creative Ideas: Breakfast Nook Design



Breakfast Nook design inspired by Hooked wall hanging of a map of Nantucket

- Flower Motifs within map borders

Creative Ideas: Textile Pattern



Ocean Topography Pattern

Inspired by the ocean in the Hooked Wall
Hanging Map of Nantucket.

Creative Ideas: Textile Pattern



Blue Flower Pattern

Inspired by the flower motifs in the Hooked Wall Hanging Map of Nantucket and, the floral patterns created by the Tilletts.

Creative Ideas: Outdoor Lounge



Feature:
Cushions upholstered with
the Blue Flower Pattern.

Gardens on Nantucket are seen as an extension of the home. Creating an area for entertaining or just relaxing outdoors can make a home even more inviting.

Rendering by **Summer Stewart**
KU, Michael Graves College, Interior Design Student



NHA Research Collections Artifact:

Silk Handkerchief made by Atlantic Silk Company



NHA Research Collections: Silk handkerchief made at the Atlantic Silk Company

Accession number: I898.0138.001

Date(s) of creation: circa 1838

Material: silk

Dimensions: 24" x 24"

Background:

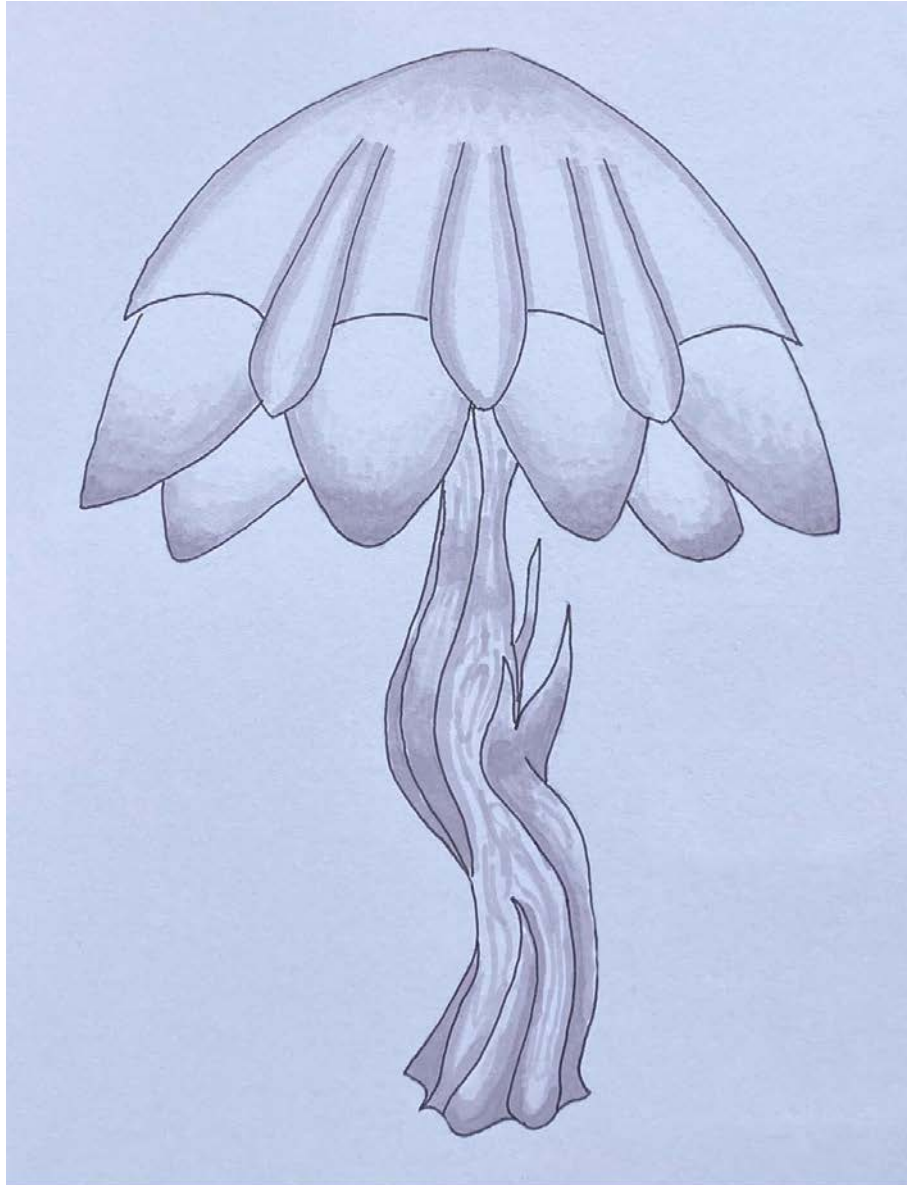
The Atlantic Silk Company's purpose-built factory featured the second steam-powered silk loom put into operation in the world, which was installed by its inventor, Gamaliel Gay. The factory began operation in mid-1836. It produced silk thread and cloth as well as selected finished articles such as aprons and handkerchiefs. Its early products were dyed and printed off-island by the Boston & Lynn Silk Printing Company, Lynn, Massachusetts. Although the silk company won awards for the quality of its cloth, a harsh winter in 1838 killed mulberry trees nationwide, and the company faltered, lasting only until 1842.



Source:

[https://nantuckethistory.org/webcat/request/Action?ClientSession=2db665c2:180c68c5b3a:7f3a&UniqueID=6000_3635_4&TemplateProcessID=6000_3635&PromptID=&ParamID=&TemplateProcessID=1003_1051_1051&PromptID=&ParamID=&CMD_\(DetailRequest\)\[0\]=&ProcessID=1003_1518\(0\)&KeyValues=KEY_m15537](https://nantuckethistory.org/webcat/request/Action?ClientSession=2db665c2:180c68c5b3a:7f3a&UniqueID=6000_3635_4&TemplateProcessID=6000_3635&PromptID=&ParamID=&TemplateProcessID=1003_1051_1051&PromptID=&ParamID=&CMD_(DetailRequest)[0]=&ProcessID=1003_1518(0)&KeyValues=KEY_m15537)

Creative Ideas: Lamp Design



Lamp shade Inspired by the silk handkerchief made by the Atlantic Silk Company. Organic lamp base shape inspired by driftwood.

Designed by **Summer Stewart**
KU, Michael Graves College, Interior Design Student

Creative Ideas: Lamp Design



Lamp color variations based on the original silk scarf colors.

Sources

- [https://nantuckethistory.org/webcat/request/Action?SystemName=Nantucket+Historical+Association&UserName=public&Password=&CMD_\(DetailRequest\)\[o\]=&TemplateProcessID=6000_3635&ProcessID=1003_1518\(o\)&KeyValues=KEY_mi5965](https://nantuckethistory.org/webcat/request/Action?SystemName=Nantucket+Historical+Association&UserName=public&Password=&CMD_(DetailRequest)[o]=&TemplateProcessID=6000_3635&ProcessID=1003_1518(o)&KeyValues=KEY_mi5965)
- [https://nantuckethistory.org/webcat/request/Action?SystemName=Nantucket+Historical+Association&UserName=public&Password=&CMD_\(DetailRequest\)\[o\]=&TemplateProcessID=6000_3635&ProcessID=1003_1518\(o\)&KeyValues=KEY_mi5993](https://nantuckethistory.org/webcat/request/Action?SystemName=Nantucket+Historical+Association&UserName=public&Password=&CMD_(DetailRequest)[o]=&TemplateProcessID=6000_3635&ProcessID=1003_1518(o)&KeyValues=KEY_mi5993)
- [https://nantuckethistory.org/webcat/request/Action?SystemName=Nantucket+Historical+Association&UserName=public&Password=&CMD_\(DetailRequest\)\[o\]=&TemplateProcessID=6000_3635&ProcessID=1003_1518\(o\)&KeyValues=KEY_mi022](https://nantuckethistory.org/webcat/request/Action?SystemName=Nantucket+Historical+Association&UserName=public&Password=&CMD_(DetailRequest)[o]=&TemplateProcessID=6000_3635&ProcessID=1003_1518(o)&KeyValues=KEY_mi022)
- <https://www.prweb.com/releases/2012/10/prweb9953879.htm>
- [https://nantuckethistory.org/webcat/request/Action?ClientSession=2db665c2:180c68c5b3a:-7f3a&UniqueID=6000_36354&TemplateProcessID=6000_3635&PromptID=&ParamID=&TemplateProcessID=1003_1051_1051&PromptID=&ParamID=&CMD_\(DetailRequest\)\[o\]=&ProcessID=1003_1518\(o\)&KeyValues=KEY_mi5537](https://nantuckethistory.org/webcat/request/Action?ClientSession=2db665c2:180c68c5b3a:-7f3a&UniqueID=6000_36354&TemplateProcessID=6000_3635&PromptID=&ParamID=&TemplateProcessID=1003_1051_1051&PromptID=&ParamID=&CMD_(DetailRequest)[o]=&ProcessID=1003_1518(o)&KeyValues=KEY_mi5537)
- <https://digitalcommons.unl.edu/tsaconf/1182/>
- <https://www.nantucketlooms.com/pages/our-story>
- <https://compassroserealestate.com/about-nantucket/things-to-do/>