

NATIONAL HERITAGE OPEN DAYS OSWESTRY & BEYOND

13TH - 22ND
SEPTEMBER 2019



PEOPLE
POWER
THEN · NOW · ALWAYS



Oswestry Town Museum
The Story of Oswestry

BEAUMONT
Independent Wealth Management

25 YEARS
H
heritage open days

www.oswestrytownmuseum.co.uk

www.heritageopendays.org.uk

WELCOME TO OSWESTRY & BEYOND HERITAGE OPEN DAYS 2019

The Oswestry & Beyond programme contains details of dates and time of Heritage Open Day events in and around Oswestry. Dates and information on additional events are available on the websites www.oswestrytownmuseum.co.uk and www.heritageopendays.org.uk. For further copies of the Oswestry & Beyond programme please visit Oswestry Town Museum or The Visitor and Exhibition Centre.

THE BAILEY HEAD

Oswestry

Lady Chiffon

Join Lady Chiffon, who has stepped out of 1889 from her magical time-travel teacup, for an enchanting occasion of traditional Victorian fairytale storytelling, dance, song & magic, bringing the past to the present like never before.



Oswestry Markets

Oswestry Indoor and Outdoor Markets have a long-standing tradition going back to the middle ages in this border market town. Traders, both local and from far-a-field bring a wide range of bespoke services and goods.

Oswestry Indoor Market is right in the centre of town, and parking is available adjacent to Powis Hall in a pay per hour car park which has plenty of space!

Indoor Market - every Wednesday, Friday & Saturday.
Outdoor market - every Wednesday & Saturday.

More events will be running throughout our festival at the Bailey Head please see the booklet insert for more details.

FIELDINGS AUCTIONEERS LTD

The Guildhall, Bailey Head SY11 1PZ



Friday 13th at 10am - 2pm

On Friday 13th September we open our Heritage Open Days festival with a Valuation Day at Oswestry Town Museum. Held by Rachel Houston-Holland and Bill Lacey from Fieldings Auctioneers Ltd Stourbridge, who will be providing valuations.

Museum entry is **FREE**, suggested donation £1 for each valuation, with all donations going to a local charity.

www.fieldingsauctioneers.co.uk

OSWESTRY TOWN COUNCIL ARCHIVES

The Guildhall, Bailey Head SY11 1PZ

Using extracts from the Town Council Archives, a display has been created on the **HODs theme 'People Power.'** The Display titled **'Petitions, Protests and Proclamations'**, will be available to see from **10am - 4pm every day** of HODs in the foyer of the Guildhall.



YR YSGUB FAYRE

Memorial Hall - Smithfield St SY11 2EG

Saturday 14th at 2pm

Yr Ysgub Fayre is organised by Papur Bro - a voluntary led Welsh Language Newspaper.

There will be stalls, tea & cake, raffle, crafts, stalls representing local villages, children's entertainment and activities. Special appearance by Peppa Pig.

Although it is a Welsh Medium Event, everyone is welcome.

It's a **FREE** entry event and arranged and run by volunteers.



TECHNIQUEST GLYNDŴR

Walford Davis Suite, the Guildhall

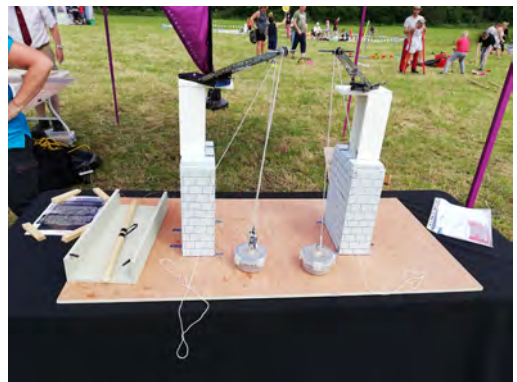
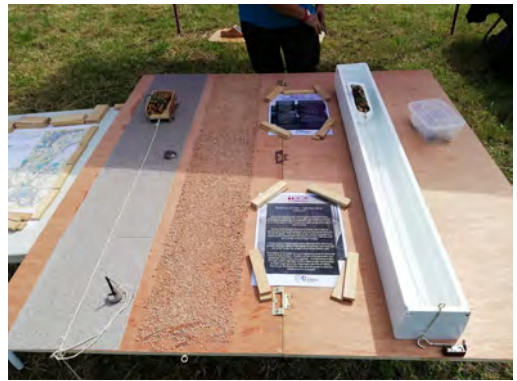
Saturday 21st & Sunday 22nd



Join **Techniquest Glyndwr** to discover the amazing engineering behind the 11 miles of the Pontcysyllte Aqueduct and Canal World Heritage Site. Meet real engineers and take part in exciting demonstrations and hands-on challenges to test your own engineering skills.



This is a **FREE** event, all activities are provided thanks to funding from the Royal Academy of Engineering Ingenious award.



OSWESTRY TOWN MUSEUM

The Guildhall, Bailey Head SY11 1PZ

The Museum is the focal point for minibus bookings and general Heritage Open Days information.

FREE minibus tours start & finish here.
Destinations & timetables available from:.

www.oswestrytownmuseum.co.uk 01691 680241

Once again the Town Museum will play a central role in 2019's Heritage Open Days Festival.

Visit our stall on the outdoor market in the weeks leading up to the festival and during the festival itself. Contact the museum for minibus tour details, talks and workshop details, and to book for events.



Astro Radio
Wednesday 18th and
Thursday 19th from 11am
till 3pm, each day.

Come along and watch your local internet radio station broadcasting live from the museum, ask about setting up a regular radio slot dedicated to all

things Oswestry. Interested in taking part? Call in and chat.

Jigsawathon

We have a devilishly difficult jigsaw that when completed will reveal one of the oldest items on display in the Oswestry Town Museum. We have children's jigsaws as well.



Wall of People Power

This year we are celebrating 'People Power'. Over the years, we've seen the ability of local communities, groups and individuals to evoke change and do extraordinary things for their communities. Organised by Oswestry Town Museum, the 'Wall of People Power' will showcase, celebrate local groups that have made and continue to make a real difference. So this year, we are celebrating their achievements, which represent 'people power' in its purest form.

PEOPLE
POWER
THEN · NOW · ALWAYS



Oswestry Town Museum

The Story of Oswestry



CRAFTIVISM

I #DARETODREAM



Come and help create a cascade of dreams in Oswestry Town Museum. Inspired by Sarah Corbett, founder of the Craftivist Collective.

Full day drop in sessions Tuesday 17th and Saturday 21st 10am - 3pm.

Why not pop along to one of our craftivist workshops, share your dreams for the future, create an 'I #dare todream cloud' using the gentle protest workshop (Craftivism = craft + activism).

Oswestry Town Museum, along with Heritage Open Days (and supported by players of the People's Postcode Lottery) support the Craftivist Collective. In their belief that dream makers can inspire us all to strive for a more beautiful, just, healthy and harmonious world.

Come and play your part, share your hopes and dreams for the future whilst enjoying the relaxing ambience of gentle crafting, the feeling of being part of something much bigger and the thought that you are helping to make a difference.



OSWESTRY CASTLE SEASON SIX

13th-20th September 2019

The pictures are from previous digs.

This is the sixth season of excavations on Oswestry's 12th Century Castle Keep. **We are on site each day from the 13th to the 20th September (10am - 4pm).** Visitors are always welcome and there will be an information officer on site to explain what we are excavating and how this relates to previous excavations.

The September excavation will consist of one large or possibly two smaller trenches to examine further the unexpected wall exposed in September 2017. This will give us more information to help determine if there is another structure alongside the Keep and what its function may be.



The Oswestry Castle Community Research Project was established in 2014 to investigate the history and archaeology of Oswestry castle. This castle was built on a prominent steep sided mound which now sits in the centre of Oswestry. Today very little remains to be seen on the top of the mound, the most noticeable being sections of mortared stones that may once have been walls. The project hopes to be able to explain what these lumps of stone actually are and to tell their story. These investigations are expected to take at least five years.

The project group are all volunteers who possess the same passion for archaeology and a desire to learn more about what was an important but largely forgotten castle. The team consists of an Archaeologist with several experienced and qualified assistants and a small but growing group of volunteer excavators. The work of the group and the excavations undertaken is funded mainly by donations, most notably from the Heritage Lottery Fund.



The excavations are usually undertaken in September to coincide with the national Heritage Open Days weekend, although in 2017 to 2019 there will be additional excavations in May.



We have now excavated the accessible parts of all four walls of the Keep along with part of the interior (the basement) allowing us to take measurements to produce an accurate plan. A more detailed plan along with a fuller analysis of our findings will be posted in the near future. Although our excavation in September will focus on the unexpected structure to the East of the Keep, the last planned large excavation, we intend to undertake smaller excavations in 2020 to examine the perimeter of the mound that may contain additional features.



ASTRONOMY EVENTS FOR HODs



PETE WILLIAMSON FRAS

Friday 20th September 12 noon
Oswestry Library

Pete will be giving a talk on 'Stars and Planets'.

Friday 20th September 2pm
Oswestry Library

Pete will be giving a talk on '50 years since the moon landings'.

THE ASTRONOMICAL SOCIETY

Founded in 1989 by Pete Williamson of Whittington, the organisation now meets every month at Roddington Village Hall. They also run regular outreach events across Shropshire with the intention of bringing the science of astronomy to all.



Saturday 21st at 8.30pm

Join The Astronomical Society by the Racecourse car park where they will be providing telescopes and expertise to observe the night sky. Identify celestial objects such as The Andromeda Galaxy, Double stars, Mars & Saturn.



ASTRO RADIO

Astro Radio is the UK's only dedicated Astronomy & Music Radio Station broadcasting to the world from Shropshire and reaching 300,000 listeners.

Astro Radio will be broadcasting from Oswestry Town Museum, on **Wednesday 18th and Thursday 19th from 11am till 3pm, each day.**



To tune in, go to www.astroradio.earth or by many apps including Tunein and Radio Line. All information can be found at www.astroradio.earth including schedules etc.



We are pleased to present a **FREE** film screening for National Heritage Open Days.

Wednesday 18th 7.30pm & Thursday 19th 1.30pm

Britain On Film: Coast & Sea



Britain On Film: Coast & Sea (U)

Let's go to the seaside! Travel round our gorgeous, varied coast, filmed throughout the 20th century from 1901 to 1978.

Take a nostalgic promenade to classic British holiday resorts including Weston-super-Mare, Morecambe and Skegness, a visit to Butlin's in Brighton and 1930s surfing in Newquay, while a 1947 information film cleverly undercuts travel clichés by showing how Dover, a traditional tourist town, is remaking itself after heavy bombings during WWII.

Enjoy a lush travelogue around the coast via Claude Friese-Greene's wonderfully re-coloured footage, as eloquent as a painting. Learn about lifeboats via the RNLI's brisk, engaging promotional film; the private life of seabirds in Julian Huxley's pioneering, Oscar-winning short film, a triumph of early environmentalism and explore the world of shipbuilding with the construction of the SS Olympic. All the while, in the background: the shimmering sea. Run time: 93 mins

Book **FREE** tickets at:

www.kinokulture.org.uk or **01691 238167**



This film is being supported through the BFI Film Audience Network.

TOUR OF THE TRENCHES SY22 6EA

Saturday 14th and Saturday 21st

There will be tours of the trenches each Saturday. Immerse yourselves in the conditions in which the soldiers would have lived, and fought in as you explore the different trenches.

Mini buses will leave Oswestry at 11am each Saturday and arrive at Park Hall for 11.20am, where they will be met by a trench guide.

People wishing to travel using their own vehicles will need to book at Oswestry Town Museum and wait in the car park at Park Hall to be met by the guide.

The guided tour is of the trenches and access to the Welsh Guards Museum.

Mini buses will leave Park Hall to return to Oswestry at approx. 1pm.



COMPETITIONS

MINIATURE ART / PHOTOGRAPHY / POETRY COMPETITION 2019

Theme: People Power of Oswestry

As part of Heritage Open Day Festival 2019, which takes place between the 13th and 22nd of September, Oswestry Library are holding **Miniature Art, Photography** and **Poetry competitions**. The competition themes are '**People Power of Oswestry**', and aim to celebrate the power, past and present, of what people have achieved in Oswestry by coming together.

Be as interpretive on the theme as you like- think broadly! **People Power** can be found in groups of any size. You might be inspired by a group from history, a goal that is being pursued today, or a something we have today in Oswestry that we wouldn't have had without people in the community collaborating when it mattered.

- **The Art** can be in any medium, for example sewing, painting, drawing, carving, felting etc **but must not exceed 10cm in any one dimension (length/width/height)**.
- **The Photography** must be the entrant's own original work, but **please do not submit original photographs, only copies, as they will not be returned**.
- **The Poetry** must be the entrant's own original work, **please do not submit originals, only copies, as entries will not be returned**.

OSWESTRY LIBRARY

SY22 6EA

Saturday 14th at 10am - 3.30pm

Hillfort activity day!

Come along to the library for a day of creative hillfort activities and find out more about Oswestry's very own Iron Age hillfort!

Free drop in, no booking required.

Saturday 21st at 10am - 3.30pm

Exhibition of Competition Entries

Come along to see the entries for the Art, Photography and Poetry competitions on the theme of 'People Power in Oswestry'

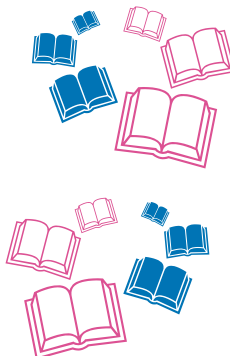
Free drop in, no booking required.

All entries must be accompanied by entry forms which will be available from the Library and Oswestry Town Museum. Multiple entries are acceptable as long as each piece has its own entry form and must be handed into Oswestry Library before the closing date.

The closing date is 5pm on Thursday 19th September 2019, and entries should be submitted by this date to Oswestry Library.

Entries will be exhibited in the library on Saturday 21st September.

Visit the Library or Museum to find out more and to pick up an entry form.



THE VISITOR & EXHIBITION CENTRE SY11 2TE



Always open Monday to Saturday 10am - 4pm

The Centre occupies the old Grammar School. First built in 1407, it is now home to a cafe and a delightful courtyard garden. There are permanent displays about *Wilfred Owen, King Oswald, Henry Walford Davies, Ivor Robert-Jones and Barbara Pym*.

FREE guided tours of the town on **Saturdays: 14th and 21st September at 11am.**



DEMON HEADS & WITCH MARKS

The Pentre, Bronygarth SY10 7LY

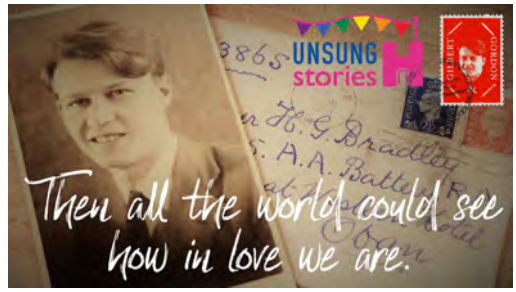
Saturday 14th 10am to 5pm

The Pentre is a medieval house protected from **Demons and Witches** by ancient **stone heads** and **ritual objects** hidden in the structure hundreds of years ago.

The author Brian Hoggard will be at our HODS event with a talk, Q&A, and book signing at the house.

Please note we have lots of steps, but we will do our best to accommodate everyone where possible.

Booking essential please contact emailhelenlloyd@gmail.com or **01691 770922**



GILBERT & GORDON UPDATE

The Guildhall - Walford Davis Suite SY11 1PZ

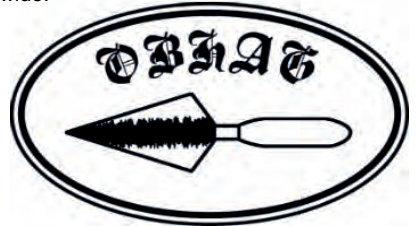
Wednesday 18th at 11am and 2pm

Saturday 21st at 11am

There will be presentations on the Gilbert and Gordon story.

Come along and hear the latest news about this fascinating story, the discovery of an additional file of letters and information, the national and international interest, Hollywood update.

How the story is spreading the word of Diversity far and wide.



OSWESTRY & BORDER HISTORY & ARCHAEOLOGY GROUP

**Autumn Meetings: Methodist Church Hall,
Castle Street, Oswestry, 7.30 pm.
All Welcome: Members £1 Non Members £3**

Friday 13th September:

'Within Walls': the Archaeology of Magical House Protection. Brian Hoggard, Researcher and Author.

Friday 11th October:

The Victoria County History in North Shropshire. Judith Everard, Victoria County History, Shropshire.

Friday 8th November:

Lost Battlefields of the Marches. Martin Hackett, Historian and Author.

Friday 13th December:

Houses of North-East Wales. Margaret Dunn, Author and Secretary Discovering Old Welsh Houses.

LLANMYNECH HERITAGE AREA & WHARF SY22 6EA

Saturday 14th, Sunday 15th & Saturday 21st
1pm to 5pm

Guided walks around Llanymynech lime kilns, associated tramways, structures and other buildings, together with adjacent quarries. These form a particularly well-preserved and complete group of structures relating to a Victorian Industry. In particular, the **Hoffman Kiln** represents the best preserved example of its type in England.

Sunday 22nd 1pm to 5pm

Guided walks and the **reproduction lime kiln** will be fired and there will be demonstrations of lime slaking throughout the afternoon. Together with **'Film in the Kiln'** a selection of short films in the **Hoffman Kiln**.



LLANMYNECH WHARF VISITOR CENTRE SY22 6EA

Sunday 15th & Sunday 22nd 1pm to 4:30pm
1pm to 5pm

Free 1/2 hour boat trips aboard the 'George Watson Buck' along this restored length of Montgomery Canal. The Visitor Centre is housed in the stables of the old Sun Inn (now demolished).



WEST FELTON WI VILLAGE HALL SY11 4EH

Saturday 14th, 10am – 3pm

The WI will showcase several displays on their activities. They will also be offering a **'have a go'** session on folk art painting or card making.

Coffee, Tea and Cakes will be available **all day**.

theWI
INSPIRING WOMEN



THE CHURCHES FEATURED THIS YEAR



St. Peter's Church, Melverley SY10 8PJ

Visit this ancient, half-timbered church on the banks of the River Vyrnwy. The church will be open throughout Heritage Open Days and manned during both weekends of the **13th - 15th and 20th - 22nd September**.

Talks on the **History of the Church** will take place on **Saturday 14th, Sunday 15th, Saturday 21st & Sunday 22nd at 2pm**.

Parking and toilets are available on site and there is disabled access to the church. Light refreshments will be available on Saturday and Sunday only.

www.melverleychurch.co.uk

St. Oswald's Church, Oswestry SY11 22SY

Saturday 14th

The church tower is the tallest and possibly the oldest building in Oswestry, dedicated to St Oswald who was killed at the battle of Maserfield in 642 AD.

Tower Tours at 10.30am and 11.45am

Please note; that there are at least 60 steps to climb the tower. **Only 20 persons per tour.**

Book with Brian Rothera on 07831 490038 to be sure of your place, otherwise entry on the door.

www.stoswaldsoswestry.org.uk



CAMBRIAN HERITAGE RAILWAY

Oswald Road SY11 1RE

Saturday 14th, Sunday 15th, Saturday 21st & Sunday 22nd at 11am - 3.30pm

Oswestry South Signal Box

First built in the 19th century for the Oswestry and Newtown Railway, Oswestry South signal box was operational for over 100 years. Cambrian Heritage Railways volunteers have refurbished the structure, sourcing and installing appropriate equipment. **The access is only by way of the staircase outside the Signal Box, entrance off Coney Green next to Sainsbury's.**



Saturday 14th, Sunday 15th, Saturday 21st & Sunday 22nd at 11am - 3pm

Cambrian Railways Museum

Has exhibits of memorabilia associated with the railway system operated by the Cambrian Railways Company and its successors. Due to the historic nature of the listed building, access requires negotiation of two steps. **Although handrails are provided, entry and exit may present difficulties for those whose mobility is limited.**

Saturday 14th, Sunday 15th, Saturday 21st & Sunday 22nd at 11am - 3pm.

Heritage Bus Tour

A vintage bus trip between Oswestry and Llynclys South Stations, allows visitors to access carriage and wagon restoration site at Llynclys. The bus will shuttle between sites on a pre-arranged timetable. Departs from the Coach Park adjacent to the Railway platform in Oswestry. **This bus has steps to allow passengers to 'climb' aboard.**



Saturday 13th to Sunday 22nd at 11am - 3pm

1939 Evacuees Exhibition The Cambrian Visitor Centre

An exhibition of photos and artefacts commemorating the arrival by train, eighty years ago, of War time evacuees from Birkenhead to the Oswestry area.

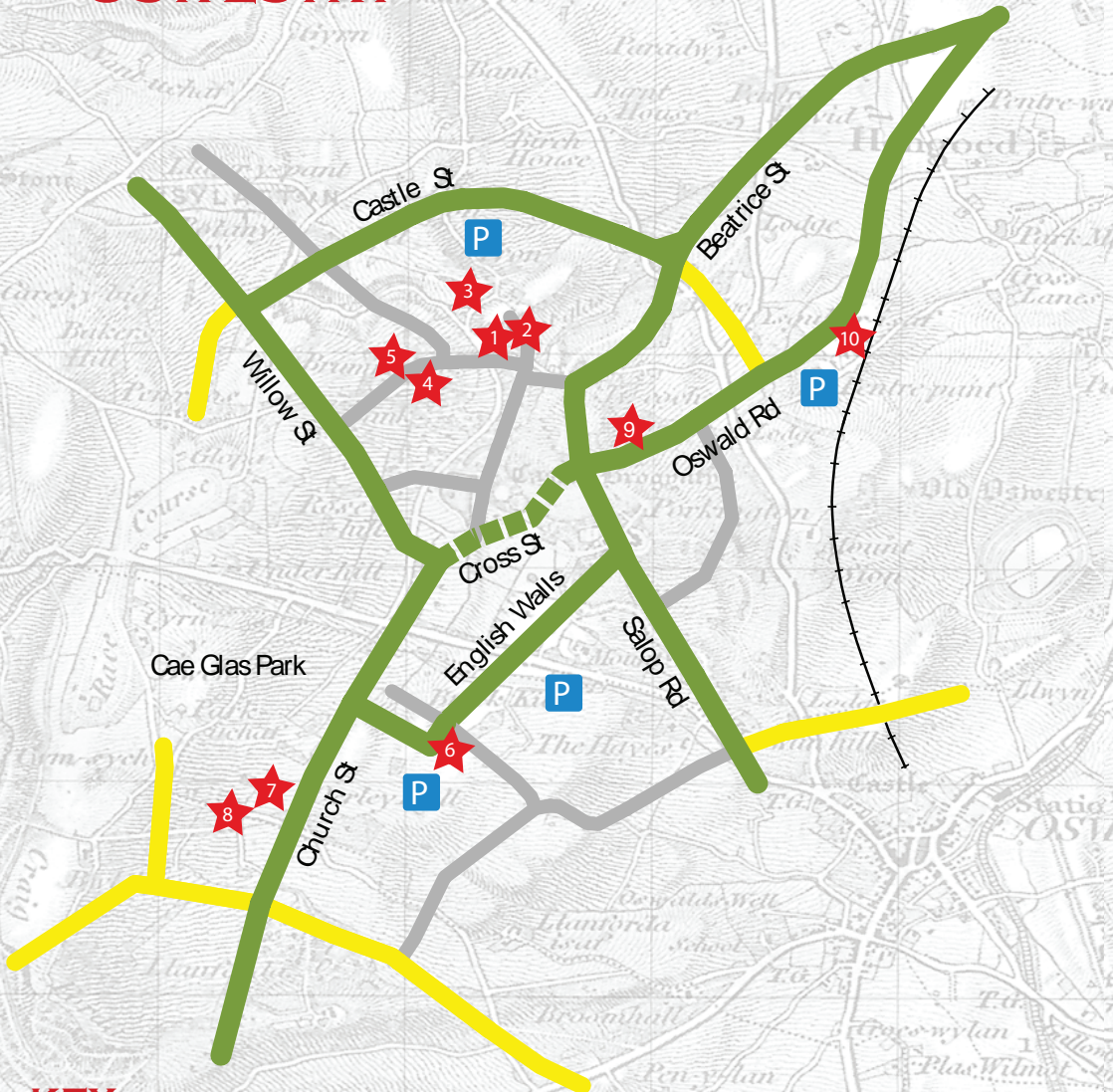
Saturday 14th at 7.30pm

1960s Railways Film Show.

A showing of archive film from British Transport Films using traditional projection techniques.

Refreshments available to purchase.

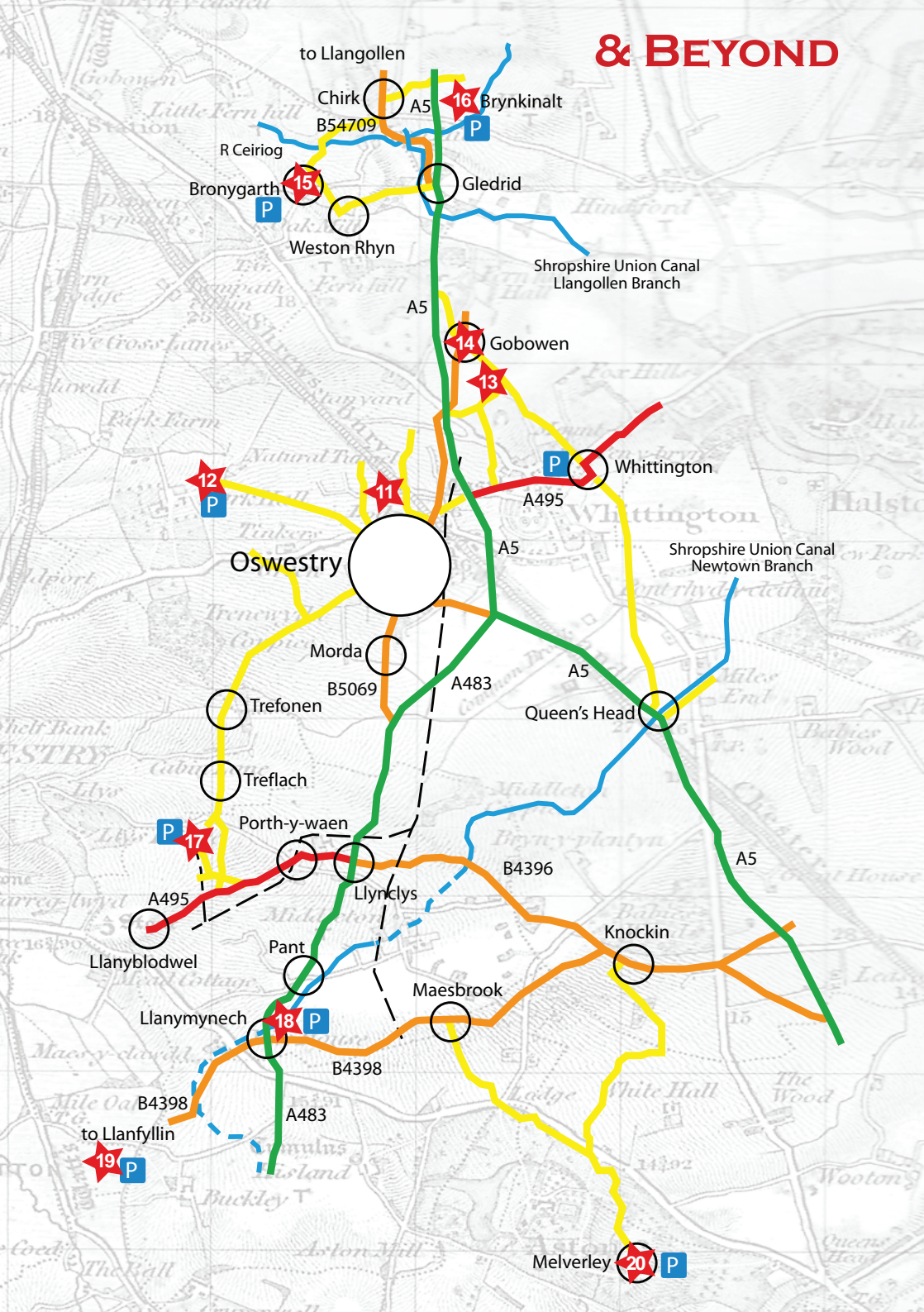
OSWESTRY



KEY

- | | | | |
|----|--|----|-------------------------------------|
| 1 | Oswestry Guildhall, Oswestry Town Museum | 14 | Gobowen Central |
| 2 | Bailey Head, Oswestry Market | 15 | Pentre, Bronygarth |
| 3 | Oswestry Castle | 16 | Brynkinalt Hall |
| 4 | Oswestry Library | 17 | Tanat Valley Light Railway |
| 5 | Kinokulture | 18 | Llanymynech Wharf & Heritage Site |
| 6 | Memorial Hall | 19 | Llanfyllin Workhouse (not to scale) |
| 7 | St. Oswald's Church, Oswestry | 20 | St. Peter's Church, Melverley |
| 8 | The Visitor Centre | | |
| 9 | Qube | | |
| 10 | Cambrian Heritage Railways | | |
| 11 | Gatacre Park | | |
| 12 | Oswestry Racecourse | | |
| 13 | Derwen College | | |

& BEYOND



to Llangollen

Chirk
B54709

A5

16

Brynkinalt

P

R Ceiriog

Bronygarth

15

Weston Rhyn

Gledrid

Shropshire Union Canal
Llangollen Branch

A5

14

Gobowen

13

Whittington

A495

P

Shropshire Union Canal
Newtown Branch

Oswestry

Morda

B5069

A483

Queen's Head

Trefonen

Treflach

Porth-y-waen

Llyncllys

B4396

A5

A495

Llanymynech

Pant

Maesbrook

Knockin

A5

B4398

Llanymynech

B4398

A483

to Llanfyllin

19

P

Molverley

20

P

THE TANAT VALLEY LIGHT RAILWAY

NANT MAWR VISITOR CENTRE SY10 9HW

Railway Rides, Museum, Limekilns, Picnic Areas and Woodland Walks

Friday 13th - Sunday 22nd, inclusive, 10am - 4pm each day.

Come and see the 309 coaches rescued from the now closed Coventry Electric Museum, enjoy the hospitality of the 'Clacton Cafe' coach and pay a visit to the museum coach to see the history of electric railway power as well as the Tanat Valley Light Railway exhibits.

'Crabtree' the diesel shunter, also from the Coventry Electric Museum will be available for cab rides. The Richard Morris Collection is now settling into its new home. Come and see the eclectic selection of railway vehicles including the BMW Isetta Bubble Car on narrow gauge wheels, the only true steam monorail engine in the world and ride the diesel monorail circuit. Enjoy the woodland walks, nature trails, picnic area and spiral viewpoint.

Truly something for everyone and a great day out.

Museum & Cafe Coaches open every day 10am - 4pm.

Free train rides will be available at weekends subject to stock availability, the monorail will be operating every day.



Thinking of volunteering? Come along, explore the site, look at all the different projects available and talk to one of our members.

FREE parking or catch the **FREE** minibus from Oswestry on Saturday and Sunday. For more information please contact Mark at h.hignett@btinternet.com or [phone 01691 780042](tel:01691780042).



HOD's NATIONAL 25 YEARS

Welcome to England's largest festival of history and culture!

Every September some 40,000 volunteers across England organise 5,000 events to celebrate our fantastic history and culture. It's your chance to see hidden places and try out new experiences – all of which are FREE to explore.



Heritage Open Days 2019 will be
13th-22nd September

Established in 1994, Heritage Open Days is England's contribution to the European Heritage Days and has since grown into the country's largest heritage festival. In 1991 the Council of Europe and the European Commission set up European Heritage Days to raise appreciation for Europe's rich and diverse cultural assets and their need for care and protection. The central principle was as simple as it was compelling: to throw open the doors to historic monuments and buildings, in particular those normally closed to the public. Today, they are held annually in September in 50 signatory states to the European Cultural Convention. Each country running it in their own way, the festival not only highlights the dazzling diversity of Europe's heritage, but also its intercultural links.

Expanding and diversifying from 701 events at its launch to over 5,000 today, Heritage Open Days continues to flourish with more events every year, reflecting the rich and diverse cultural heritage of England and its communities. Spanning the public, private and voluntary sectors, the festival is a unique and powerful partnership. Working with organisations and individuals across England, Heritage Open Days is our national local festival. There are always new stories to tell and new places to open. It's a chance for communities nationwide to come together to learn, explore and have fun by sharing the treasures on their doorstep.

**PEOPLE
POWER**
THEN · NOW · ALWAYS

PEOPLE POWER THEN. NOW. ALWAYS.

This year we are celebrating 'People Power' – the ability of local communities, groups and individuals to evoke change. This year's theme is inspired by two contrasting anniversaries, which highlight the different forms of People Power:

- 200th anniversary of the Peterloo massacre: British forces attacked a massive pro-democracy rally on St Peter's Field, Manchester. The ensuing outrage helped publicise the call for parliamentary representation and led to the founding of the Guardian newspaper.
- 25th anniversary of Heritage Open Days: Over the years, we've seen many of you do extraordinary things for your communities: opening museums, creating networks, saving sites from unsuitable developments. All of these have made - and continue to make - a real difference. So this year, we are celebrating your achievements, which represent two and a half decades of 'people power' in its purest form.

Wall of People Power

Following on from the success of last years 'Wall of Women', Oswestry Town Museum has organised a 'Wall of People Power' showcasing the local groups that have made and continue to make a real difference to our community.

CROSS BORDER LINKS MINIBUS TRIPS

BRYNKINALT GARDENS

Wrexham LL14 5NS

Tuesday 17th 2pm - 4pm



The beautiful Formal West Garden and the Ornamental Woodland Shrubbery of this historic estate will be open for visitors to enjoy and explore, but please note the house will **NOT** be open. Tea/ coffee & homemade cake for sale. Minibus booking essential.

QUBE

Oswestry SY11 1RB

Qube kindly lend their assistance with Heritage Open Days with the supply of mini buses and drivers that we use over the weekends.



HERITAGE COMIC TRAIL

Follow the trail around the town. Get your **FREE** trail guide from the Qube or from the Town Museum. Available throughout the Festival. A limited number of the hardback books are also available from the Qube and Town Museum at £12.99 each.

Oswestry HERITAGE



Find a Heritage Open Day event near you. Share your observations and links to listings on the [Oswestry Heritage Centre](#) Facebook Page.

Y DOLYDD, LLANFYLLIN

Llanfyllin Workhouse, SY22 5LD

Sunday 15th 10am - 5pm



Llanfyllin Workhouse 3rd Food Fair with the Cadw Open Doors Events, showcasing the best in locally produced food and drink with a wide range of produce available to sample.

Stalls confirmed so far: Little Fudge Box, Will Denne's - honey and bee products, Boozey Belles - cocktails, Berriew Cider- single apple ciders made traditionally, Cave Valley Kitchen - Caribbean BBQ, Food Station Wales - Mediterranean ingredients olives etc. Soap Nuts - eco natural soap, Woodlands Ice cream (if the weather is good), Robert Shelton - furniture (for the kitchen) Gardens by Drew - herbs and plants, Fijian Cuisine from Kana with Kassie, Vicarage Bakery - bread.

Children will be able to make their own pizza and cook it in our wood fired Cob oven, (built by Llanfyllin Green Hub). Also live performances from Oswestry Jazz Orchestra and Torsk (live electronic music).

Whilst enjoying the fair, learn about the building and renovation of The Master's House.

OSWESTRY GATEWAY PROJECT @ GATACRE PAVILION

Oswestry SY11 1DP

Sunday 15th, 11am & 2pm



Guided walks around **Old Oswestry Hillfort**. Learn more about the 3,000-year story of Old Oswestry, one of Britain's best preserved and most significant Iron Age hillforts - **The Stonehenge of the Iron Age**. Walks organised by the hillfort conservation group, Oswestry Heritage Gateway.

Meet at Gatacre Pavilion, free parking nearby.

OSWESTRY COMMUNITY GAMES

Bringing Oswestry Together!



Guest of Honour

Di Carrington - Atlantic Ladies

Cae Glas Park, Oswestry

Sunday 15th September 2019

11am - 3.45pm

**Free Community Fun Event including Sport,
Dance and Music for the whole family.**



David Davies MC

Rotary Club of Oswestry

Love Dance

wynnstay HOTEL & SPA

Oswestry Sports Forum

www.oswestrysportsforum.org.uk

Oswestry Town Museum

The Charlotte Harbrey

Shropshire Towns and Rural Housing

energize

LOTTERY FUNDED

Inclusively Fit Project

TALKS & WORKSHOPS

DESIGNS IN MIND POP-UP & MINDFULNESS HILL FORT WALK

Gatacre Pavilion

Sunday 15th 11am - 2pm

Join Designs in Mind in a workshop environment at the Gatacre Pavilion and learn how to print a hillfort inspired linocut card. Send it to a friend to spread the love of our hillfort! Whilst your print dries, enjoy a signposted mindfulness walk of our Iron Age Fort and experience time in nature and the well-being it brings.

Designs in Mind is a working studio and shop designing & making commissioned art work and products for retail. People join the team predominantly referred through secondary mental health care. Our work makes people say 'Wow!' We exceed people's expectations and in turn people living with mental health challenges have a different platform from which to take on the world.



Tea and cake will be provided by the Oswestry Hillfort Group.

For more details contact:

Rosie at rosieannevans92@gmail.com

THE PEOPLE WHO MADE DERWEN

Derwen College SY11 3NA

Saturday 14th September - 11am - 12 noon

Thursday 19th September - 11am - 12 noon



Dame Agnes Hunt founded Derwen College in 1927, at the age of 61.

The college was a place where physically disabled young people could learn a trade suitable to their disability and become partially or wholly self-supporting. Dame Agnes was an inspirational and truly amazing person who devoted her life to improving the lives of disabled men, women and children, never giving up on them or their cause. Agnes' visionary work before and during her time at Derwen College inspired a legacy that lives on to this day.

But who are the people who have made Derwen what it is today - 92 years later?

Join us for a chat, refreshments and to look at some of the Derwen College archives, and find out more about the people who made Derwen College.

Pre-booking is essential.

Phone Helen Edwards on [01691 661234](tel:01691661234) ext 354, or email helen.edwards@derwen.ac.uk to reserve a space.

More talks and workshops will be running throughout out our festival please see the booklet insert for more programme details.

TALKS SCHEDULE

Some of the venues hosting talks are limited in numbers and with some talks being very popular it is advisable to book in advance to ensure a place. Some talks will happen more than once and in more than one place.

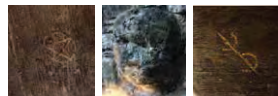
For bookings and enquiries please contact: **Oswestry Town Museum 01691 680241**
Mark Hignett 01691 780042

SATURDAY 14TH SEPTEMBER

- **All About Heritage Open Days 10.30am** A talk by Mark Hignett
Walford Davies Room - The Guildhall
- **All About Heritage Open Days 12 noon** A talk by Mark Hignett
Gobowen Central Community Hub
- **The People who made Derwen 11am** Derwen College SY11 3NA
Pre-booking is essential. Phone Helen Edwards on 01691 661234 ext 354,
or email helen.edwards@derwen.ac.uk to reserve a space.



- **The History of Melverley Church 2pm**
- **Demon Heads & Witch Marks 10am - 5pm** A talk by the author Brian Hoggard
'Magical House Protection: The Archaeology of Counter-Witchcraft' The Pentre, Bronygarth SY10 7LY
Booking essential please contact emailhelenlloyd@gmail.com or **01691 770922**

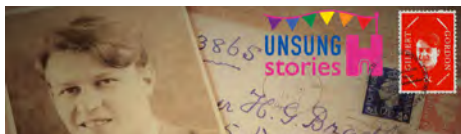


SUNDAY 15TH SEPTEMBER

- **The History of Melverley Church 2pm**

WEDNESDAY 18TH SEPTEMBER

- **Gilbert and Gordon, the updated story so far 11am & 2pm** A talk by Mark Hignett
Walford Davies Room - The Guildhall



THURSDAY 19TH SEPTEMBER

- **The People who made Derwen 11am** Derwen College SY11 3NA
Pre-booking is essential. Phone Helen Edwards on 01691 661234 ext 354,
or email helen.edwards@derwen.ac.uk to reserve a space.



FRIDAY 20TH SEPTEMBER

- **Stars and Planets 12 noon** A talk by Pete Williamson
Oswestry Library SY22 6EA
- **50 years since the moon landings 2pm**
A talk by Pete Williamson Oswestry Library SY22 6EA



SATURDAY 21ST SEPTEMBER

- **Gilbert and Gordon, the updated story so far** A talk by Mark Hignett
Walford Davies Room - The Guildhall
- **The History of Melverley Church 2pm**
at Melverley Church

A talk by Mark Hignett

SUNDAY 22ND SEPTEMBER

- **The History of Melverley Church 2pm**
at Melverley Church





Oswestry Visitor & Exhibition Centre



Always open Monday to Saturday
10am-4pm with exhibitions on Wilfred
Owen, King Oswald, Henry Walford Davies,
Ivor Roberts-Jones & Barbara Pym.
Free guided town tours on Saturday 14th &
21st September at 11am.

Visitor information, local gifts, crafts, books
and local souvenirs for sale. Monthly
changing art exhibitions. Coffee shop. Dogs
welcome.

Located behind St Oswald's Church.

01691 662753

obt@oswestry-welshborders.org.uk

www.oswestry-welshborders.org.uk

@OswestryTourism

