

# Selwyn Libraries



Nau mai,  
haere mai ki  
**Te Ara Ātea**

[selwynlibraries.co.nz/te-ara-atea](https://selwynlibraries.co.nz/te-ara-atea)

**Nau mai, haere mai ki**

# **Te Ara Ātea**

**Welcome to the unobstructed trail  
to the world and beyond!**

It's my pleasure to introduce you to Te Ara  
Ātea – an incredible place of discovery  
and learning.



The opening of Te Ara Ātea is an exciting milestone for our  
district. The rich experiences within this space tell our past  
stories and will guide us confidently into the future.

It's where we'll come together as a community to learn,  
connect with family and friends and meet new people.

See you there!

A handwritten signature in black ink, appearing to be 'S Broughton'.

Sam Broughton, Mayor of Selwyn

**Kei whea mai te ataahua!**  
**It is indeed a thing of beauty!**

Te Taumutu Rūnanga is proud to join with  
Selwyn District Council to celebrate the  
opening of Te Ara Ātea.



This facility maps a new trail in our district's  
history and we look forward to the ongoing journey.

Mauri ora.

A handwritten signature in black ink, appearing to be 'Liz Brown'.

Liz Brown, Chair  
Te Taumutu Rūnanga



# We warmly invite you

Opening in December Te Ara Ātea will be the manawa – the beating heart – of both Rolleston and the wider Selwyn district; a place of learning, community gathering and sharing knowledge.

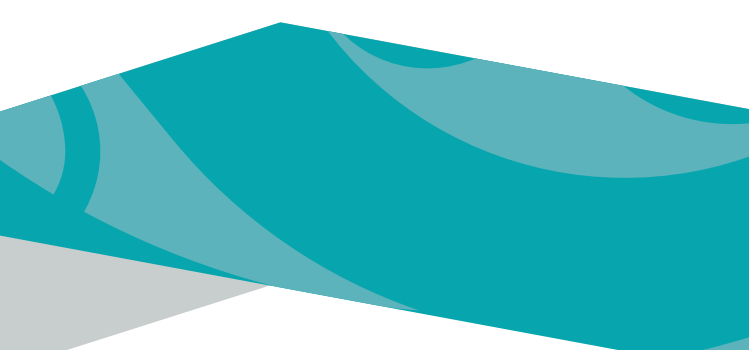
Inside you will find a modern library with an extensive selection of books, magazines and reference material but also a tamariki zone with a sensory space, a studio, café, workshop area and exhibition and performance spaces.

Te Ara Ātea has been designed to cater for creativity and nourish your cultural soul. The studio and workshop spaces are where you may create and design. Art exhibitions will be ongoing throughout the year. The jewel in the crown, is Te Waka Huia with beautifully curated taonga displays.

Spaces can be booked for meetings, presentations and performances.

Whether you're looking for a quiet reflective spot, creative hub, a sensory experience, or a good read, Te Ara Ātea has it all.

Outside the building, Te Ara Ātea has accessible raised gardens, seating, edible plants and a dedicated spot for weekend markets.





# The story behind the name

Te Taumutu Rūnanga has gifted the name, Te Ara Ātea, to the community.

Te Ara Ātea means unobstructed trail to the world and beyond. The name expresses a notion that this is a place for learning, gathering, connecting, exploring and celebrating our heritage and people.

Based near the south-eastern corner of Te Waihora (*Lake Ellesmere*), Te Taumutu Rūnanga is one of the 18 papatipu rūnanga of Ngāi Tahu, the principle Māori iwi of Te Waipounamu (*South Island*).

Te Taumutu Rūnanga and Te Ngāi Tūāhuriri Rūnanga and their respective hapū are the mana whenua in the region. Among their responsibilities is to champion cultural traditions and stories. Hence the gifting of the name.

Te Ara Ātea reflects and recognises the building's location within a network of traditional Ngāi Tahu settlements and mahika kai areas on the central part of the Canterbury Plains. Of particular importance to this network are the trails that connect the many mahika kai sites on the shores of Te Waihora and across the plains to the Waimakariri in the north and the foothills of the Southern Alps to the west.

# Collections

Te Ara Ātea offers more of all the books you have become used to seeing at our libraries, as well as some great new collections to try.

The Kohikohika Māori is a rich, growing collection with a special emphasis on Te Ao Māori.

The Selwyn Heritage Collection has been consolidated to share the unique history, places and people of our district. A great place to start your family history research!

You will also find a range of family board games to borrow, beautiful new jigsaw puzzles and fun tech kits to challenge your digital skills.

Your library card is your pathway to read, learn and play. Kia manahau!

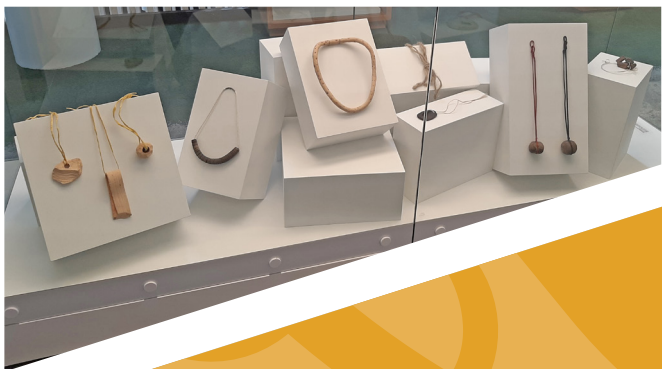




## Art experience

Te Ara Ātea is a new where for the arts in Selwyn and will launch with four major visual artworks from prominent Canterbury artists Hannah Beehre (*painting*), Areta Wilkinson and Mark Adams (*jewellery and photography*), Piri Cowie (*sculpture*) and Nathan Pohio (*video installation*).

Te Ara Ātea will regularly host live music and performances, engaging artist talks, panels, and hands on learning programmes for all ages to participate in the arts.



# Museum experience

Museum-style experiences are integrated throughout the building; exploring stories of people, places and journeys throughout the district.

This storytelling celebrates our rich heritage and diversity as well as our beautifully unique landscape.



# Te Ara Ātea spaces

Te Ara Ātea is about seeking new horizons, challenging ourselves and coming together. The names of the internal spaces represent horizons, trails and geographical markers in the Selwyn district.

Our community spaces and rooms are plug and play – grab one of our Google Chromebooks or bring your own device.

## Te Waka Huia

Te Waka Huia is where we'll store our precious collections, or local history and taonga.

It will be a place of calm inspiration, where you can breathe and reflect. Located at the top of the stairs, facing east.

## Toi Huarewa

Toi Huarewa is a large room perfect for events, community groups and meetings.

Toi Huarewa references the pathways we take in the pursuit and acquisition of knowledge. Located on the southern side of Te Ara Ātea.

## Huanui and Tahatū

Huanui and Tahatū are found on the ground floor close to the community lounge and café and are perfect for studying and smaller meetings.







## **Te Whare Tapere**

Te Whare Tapere is the house of entertainment, games, theatre, fun and delight. This is the space for testing new art forms, for practicing and innovating established art forms and for bringing back past traditions. Located on the southwest corner of the ground floor.

## **Wāhi Auaha**

Wāhi Auaha is a place to create and learn new things – regardless of age or experience.

It features 3D printers, robotics, games, music equipment and more. Located on the northern side of the ground floor.

## **Wāhi Waihaka**

Wāhi Waihaka is a workshop space to develop ideas, create and construct. It features tools and some handy machines to get the creative juices flowing.

It's located on the southern side of Te Ara Ātea with a rolling garage door.

# Urban Espresso - Te Ara Ātea

Manu and Paul are the faces of Urban Espresso - Te Ara Ātea. You might recognise them as the Selwyn-based team behind Suburban Eatery in Leeston, Urban Eatery in Barrington and Cashmere and Urban Espresso on Moorhouse – as well as the renowned Canterbury catering brands the Social Platter Co. and Catering Collective.

Fitting in with their community focus they are proud to be staying local, enhancing the amazing modern spaces within Te Ara Ātea and supporting growth in Selwyn.

Enjoy fresh food produced in their Leeston-based kitchen, top-notch coffee and trademark service.

Urban Espresso - Te Ara Ātea will be open during library hours – perfect for your Sunday browse or afterschool visit.





## Sensory space

The area outside Te Ara Ātea is alive with spaces to explore and play.


A sensory space and garden engages all the senses – sight, touch, sound, smell and taste. It will feature pergolas, raised gardens with edible plants and sound and colour features.

Nine schools throughout the district have been involved in creating feature poles and decorative mosaic tiles for the sensory space. The brightly decorated poles signify each school's unique character and our district's landscape, flora, birdlife and environment.

## Opening season tours

Te Ara Ātea is a treasure trove bursting with stories and we're not just talking about our collection of books! Curated museum-style exhibits are dotted throughout; telling unique stories of the Selwyn district, the landscape and our communities.

We cannot wait to show you around. Our team will be on deck to provide tours of Te Ara Ātea daily, spilling the secrets of the building, letting you know where to find all your favourite books and sharing with you our art and heritage exhibitions.





# Book a tour!

**Open from  
December 2021**

Monday to Friday 9am–6pm

Thursday open to 8pm

Saturday and Sunday 10am–4pm

[SELWYNLIBRARIES.CO.NZ/TE-ARA-ATEA](https://selwynlibraries.co.nz/te-ara-atea)

