

Nebraska
Department of Correctional Services

2007



33 rd

Annual Report
and
Statistical Summary

Department of Correctional Services Directory

Agency 46

Department of Correctional Services

P.O. Box 94661

Location: Folsom & W. Prospector Pl.

Lincoln, NE 68509-4661

Building #1

(Lincoln Regional Center Campus)

TDD (402)479-5895

FAX Numbers:

Main Fax-Lobby 402-479-5119

Director's Office 402-479-5623

ROBERT P. HOUSTON, Director 402-471-2654

Deputy Director, Administrative Services, Robin Spindler

Deputy Director, Institutions, Frank X. Hopkins

Deputy Director, Programs and Community Services, Larry Wayne

Accounting and Finance ManagerInga Hookstra
ADA CoordinatorElizabeth Stanosheck
Adult Parole Administrator.....James McKenzie
Budget Management Analyst.....Kate Morris
Corrections Programs CoordinatorJanee Pannkuk
Director of NursingStella Dargeloh
Facilities Engineering ManagerDouglas K. Hanson
Health Care Services Administrator.....Brian Marshall
Human Resources AdministratorMarian Layman
Information Systems ManagerGeorge Wells
Legislative Liaison.....Connie Nemec
Legal DivisionGeorge Green
Emergency Management SupervisorBrad Hansen
Materiel Administrator.....Jan Lehmkuhl
Grants Administrator.....Patricia Sattler
Planning, Research and Accreditation.....Steve King
Organizational Development /
 Staff Training AcademyLaura Farris
Records AdministratorRon Riethmuller
Safety/Sanitation CoordinatorSteve Vodicka
Special Services Administrator.....Terry Ewing
Medical Director,Randy Kohl, MD
Behavioral Health Administrator.....Cameron White, PhD
Behavioral Health Asst Administrator for
 Mental Health DirectorMark Weilage, PhD
Behavioral Health Asst Administrator for
 Substance Abuse ProgramRick McNeese, PhD
Behavioral Health Asst Administrator for
 PsychiatryMohammed Kamal, MD

Department of Correctional Services Directory
Agency 46

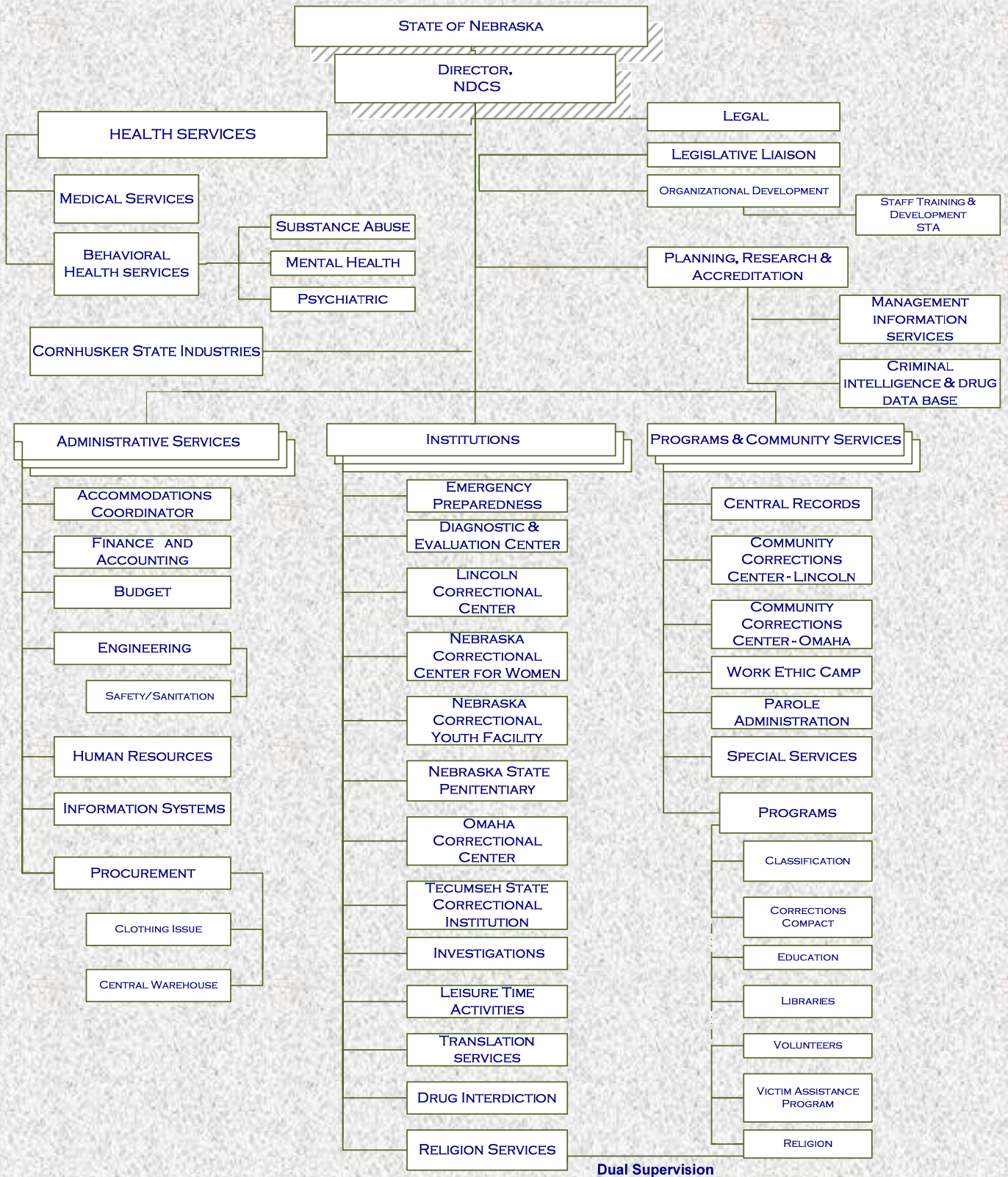
Key Personnel As of May 15, 2008

ROBERT P. HOUSTON, Director 402-471-2654

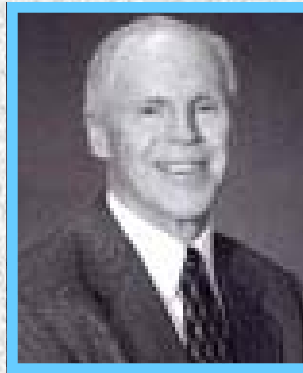
Deputy Director, Administrative Services, Robin Spindler
Deputy Director, Institutions, Frank X. Hopkins
Deputy Director, Programs and Community Services, Larry Wayne
Deputy Director, Health Services, Randy Kohl, MD
Deputy Director, Cornhusker State Industries, John McGovern

Accounting and Finance Manager, Inga Hookstra
ADA Coordinator, Elizabeth Stanosheck
Adult Parole Administrator, Cathy Gibson-Beltz
Budget Management Analyst, Kate Morris
Corrections Programs Coordinator, Layne Gissler
Director of Nursing, Stella Dargeloh
Facilities Engineering Manager, Douglas K. Hanson
Health Care Services Administrator, Brian Marshall
Human Resources Administrator, Marian Layman
Information Systems Manager, George Wells
Legislative Liaison, Connie Nemece
Legal Division, George Green
Emergency Management Supervisor, Brad Hansen
Materiel Administrator, Jan Lehmkuhl
Grants Administrator, Patricia Sattler
Planning, Research and Accreditation, Steve King
Organizational Development /
Staff Training Academy, Vacant at this time
Records Administrator, Kyle Poppert—Acting
Safety/Sanitation Coordinator, Steve Vodicka
Special Services Administrator, Terry Ewing
Behavioral Health Administrator, Cameron White, PhD
Behavioral Health Asst Administrator for
Mental Health Director, Mark Weilage, PhD
Behavioral Health Asst Administrator for
Substance Abuse Program, Rick McNeese, PhD
Behavioral Health Asst Administrator for
Psychiatry, Mohammed Kamal, MD
Warden, Community Corrections Center-Lincoln, Rex Richard
Warden, Community Corrections Center-Omaha, Ryan Mahr
Warden, Diagnostic and Evaluation Center, Mario Peart
Warden, Lincoln Correctional Center, Diane Sabatka-Rine
Warden, Nebraska Correctional Center for Women, John Dahm
Warden, Nebraska Correctional Youth Facility, Cathy Waller-Borovac
Warden, Nebraska State Penitentiary, Dennis Bakewell
Warden, Omaha Correctional Center, Karen Shortridge
Warden, Tecumseh State Correctional Institution, Fred Britten
Warden, Work Ethic Camp, Barb Lewien

NEBRASKA DEPARTMENT OF CORRECTIONAL SERVICES



Director
Nebraska Department of Correctional Services



Robert P. Houston

Director Houston was appointed to this position by Governor Dave Heineman on March 14, 2005. Immediately preceding his appointment, he was Director of the Douglas County Department of Corrections having served in that position since April 2003. He started his state corrections career in 1974 as a counselor at the Nebraska State Penitentiary. In the years that followed, he held progressively more responsible positions throughout the Agency to include Unit Manager at the Lincoln Correctional Center, Unit Administrator at the Nebraska State Penitentiary, Associate Superintendent at the Omaha Correctional Center, Deputy Warden at the Penitentiary, Warden at three institutions Omaha Correctional Center, Lincoln Correctional Center, and Nebraska Correctional Youth Facility and from September 2002 to April 2003 he served as the Assistant Director of Programs and Community Services. Mr. Houston serves on many boards and committees such as the Jail Standards Board, the Crime Commission, the Community Corrections Council, the Capitol Facilities Planning Committee, and the Interstate Compact for Adult Offender Supervision. He is the Co-Founder and Member of the Omaha's Metropolitan Chief's Association, Board President of the UNO/UNL Criminal Justice Education Fund within the University of Nebraska Foundation, past president of the United State's Deputy Warden's Association and the Nebraska Correctional Association.

Mr. Houston has a Bachelor of Science in Criminal Justice from the University of Nebraska-Omaha and a Master of Science in Criminal Justice from the University of Nebraska.

Director's Forward

I continue to be very proud to be a member of one of the very best correctional systems in the nation, the Nebraska Department of Correctional Services (NDCS). I present to you this 2007 Annual Report. Whether you are a NDCS staff member, researcher, legislator, student or member of the Nebraska community, please be assured that our Department employs the Nation's finest correctional practitioners to meet difficult challenges. Our rich history extends back to 1851 when we served as the Nebraska Territory Prison. Today, we are the State's largest criminal justice agency. NDCS maintains a firm commitment to providing effective protection for our citizens and high quality operations as was recognized this summer when our Department received the "Eagle Award". We are now part of the elite group of thirteen prison systems in the nation that are 100% fully accredited by the American Correctional Association.

As our inmate population continues to grow, we respond with careful planning and research to determine future needs. We also attend to the needs of others such as county jails by providing jail management and medication aide training throughout the year. We are engaged in strategic planning with Nebraska Probation to expand community resources while reducing or stemming growth in our inmate population. Our Department is focused on lowering the cost of government. We are fully engaged in exploring front-end, in process and back-end solutions to crowding. During the past eighteen months we have witnessed a two percent decrease in our incarcerated population while our parole count reaches historically high numbers.

In 2006, we dramatically increased the number of inmates at our community correction centers. We lowered inmate's custody levels while increasing protection for the public. This action has increased inmate optimism and decreased tension and future costs. Further, we have had no significant increase in crowding in our facilities with high-risk inmates during the past year and a half.

By keeping inmates engaged with meaningful and fulfilling jobs, programs and activities contribute directly to our level of safety, security, and order. The hard work and effort by Departmental staff assigned to Cornhusker State Industries (CSI) has increased the number of inmates employed by Industries. Programming staff contributes by preparing outstanding volunteers to serve a unique role in support of inmates and the Department. NDCS has implemented and will continue to expand re-entry activities, increase residential treatment for substance abuse, develop a mental health unit, and grow the number of manufacturing jobs by adding industry space in our facilities.

Our Strategic Master Plan provides a plan for the Agency's future needs. Our plan is designed to only seek facility capacity increases when, after alternatives are exhausted, capacity increase becomes necessary. Our Health Services Division, with assistance from the National Institute of Corrections, has redesigned our delivery of services by concentrating on high-risk and mentally ill inmates. In early 2008, we will open our mental health unit at the Lincoln Correctional Center. This unit will work in a very coordinated way with our administrative confinement units and our newly developed transition unit/program.

I am very pleased that you are taking the time to study this aspect of our Department's challenges and accomplishments. Please call me at 402/479-5710 if I can assist in any way.

Table of Contents

Agency Directory	1
Current Key Personnel	2
Organizational Chart.....	3
Director’s Bibliography and Forward.....	4-5
TABLE OF CONTENTS	6-10
<u>SECTION I</u>	
FY2007 Annual Cost Report	11
Employee Awards	12
<u>SECTION II</u>	
Deputy Directors	13-16
NDCS Ethics.....	17
NDCS Vision Points.....	18-20
NDCS Mission Statement.....	21
ADMINISTRATIVE SUPPORT	
Legal	23
Legislative Liaison	23
Medical Administration	
~ Health Care.....	24
~ Substance Abuse.....	25
~ Mental Health.....	26
Planning ,Research and Accreditation	27-29
Organizational Development / Staff Training Academy	30-31
Cornhusker State Industries.....	31
Federal Surplus	32
ADMINISTRATIVE SERVICES	
Accommodations Coordinator.....	34
Finance and Accounting	34
Budget.....	34
Engineering.....	35
Procurement.....	35
Human Resources	36
Agency Employee Profile	37
Safety/Sanitation	38
Information Systems	38
Grants Administration.....	38
PROGRAMS AND COMMUNITY SERVICES	
Community Corrections Center-Lincoln	40
Community Corrections Center-Omaha	41
Work Ethic Camp.....	42
Adult Parole Administration.....	44-45
Central Records.....	45
Victim Assistance Program.....	45-46
PROGRAMS	
Education.....	46
Corrections Compact.....	46
Self-Betterment.....	46
Volunteers.....	47

Table of Contents

Classification	47
Libraries	47
Inmate Transportation and Extradition	47
Reentry	48
<u>SECTION III</u>	
INSTITUTIONS	
Diagnostic and Evaluation Center.....	50
Lincoln Correctional Center.....	51
Nebraska Correctional Center for Women	52
Nebraska Correctional Youth Facility	53
Nebraska State Penitentiary	54
Omaha Correctional Center.....	55
Tecumseh State Correctional Institution	56
Programming and Services provided by NDCS Facilities	58-63
Programs and Services under supervision of Deputy Director of Institutions.....	64-65
Interpretation/Translation Services—Emergency Preparedness—Religious Services investigations—Drug Interdiction—Leisure Time Activities, NDCS Security Manual	
<u>STATISTICAL SUMMARY</u>	
<u>SECTION IV</u>	
Admissions and Releases	67
Average Monthly Population.....	68
<u>SECTION V</u>	
TOTAL POPULATION	
FEMALE	
Current Age.....	69
Current Custody	69
Average Age.....	69
Record Center.....	69
Race	69
Admission Type.....	69
Commitment Area	69
Previous Parole	70
Average Length of Stay.....	70
Marital Status	70
Length of Stay in Institution.....	70
Religion.....	70
Average Minimum and Maximum Sentence	70
Most Serious Offense	71
Most Serious Offense Category	71
Minimum/Maximum Sentence	72
MALE	
Current Age.....	73
Current Custody	73
Average Age.....	73
Record Center.....	73
Race	73
Admission Type.....	73
Commitment Area	73
Jurisdiction	73
Previous Parole	74
Average Length of Stay.....	74
Marital Status	74
Length of Stay in Institution.....	74
Average Minimum and Maximum Sentence	74
Most Serious Offense Category	74
Minimum/Maximum Sentence	75

Table of Contents

PAROLE

Current Age	76
Parole Indicator	76
Average Age	76
Previous Parole	76
Race	76
Admission Type	76
Gender	76
Most Serious Offense Category	77
Length of Stay in Institution.....	77
Average Length of Stay in Institution	77
Commitment Area.....	77
Minimum and Maximum Sentence.....	78

SECTION VI—ADMISSIONS

NEW ADMISSIONS

Age at Admission	79
Admission Type	79
Average Age at Admission	79
Admission by Month.....	79
Race	79
Average Minimum and Maximum Sentence	79
Gender	79
Most Serious Offense Category—Females	80
Most Serious Offense Category— Males	80
Most Serious Offense Category— Total	80
Commitment Area— Total.....	80
Commitment Area— Female	80
Commitment Area- Male	80
Minimum /Maximum Sentences	81

REVOCATION ADMISSIONS

Age at Admission	82
Parole Year and Month.....	82
Average Age at Admission	82
Race	82
Gender	82
Admission Status	82
Most Serious Offense— Female	83
Most Serious Offense— Male.....	83
Most Serious Offense category.....	84
Average Minimum and Maximum Sentence	84
County of Commitment.....	84
Minimum /Maximum Sentences	85

NEW SENTENCED AND REVOCATION ADMISSIONS

Age at Admission	86
Offense Category Most Serious Offense	86
Admission Status	86
Admission Type	86
Race	86
Gender	86
Minimum/ Maximum Sentence	87

Table of Contents

EVALUATORS/SAFEKEEPERS ADMISSIONS

Age at Admission	88
Status	88
Average Age at Admission	88
Admission by Month	88
Gender	88
Race	88
Commitment Area	88

WEC ADMISSIONS

Age at Admission	89
Admission by Month	89
Average Age at Admission	89
Most Serious Offense	89
Gender	89
Race	89
County of Commitment	90

SECTION VII — RELEASES

INSTITUTIONAL RELEASES

Age at Admission	91
Release Type by Gender	91
Average Age at Admission	91
Admission Status	91
Race	91
Average Minimum and Maximum Sentence	91
Average Length of Stay	91
Length of Stay	92
Most Serious Offense Category	92
Minimum/Maximum sentence	93

EVALUATORS AND SAFEKEEPERS RELEASES

Age at Admission	94
Average Age at Admission	94
Institutional Release Date	94
Institutional Release Type	94
Age at Release	94
Status	94
Gender	94
Race	94
Average Length of Stay	94
Average Age at Release	94
Length of Stay	95
Commitment Area	95

WORK ETHIC CAMP RELEASES

Age at Admission	96
Average Age at Admission	96
Institutional Release Date	96
Release Type	96
Age at Release	96
Gender	96
Race	96
Average Length of Stay	96
Average Age at Release	96
Length of Stay	97
County of Commitment	97

Table of Contents

SECTION VIII COMMUNITY CORRECTIONS

Age at Admission to Prison.....	98
Average Age at Admission	98
Gender.....	98
Race.....	98
Status.....	98
Most Serious Offense Category.....	98
Minimum/Maximum Sentence.....	99

SECTION IX PAROLE

PAROLE ADMISSIONS

Age at Release to Parole	100
Average Minimum and Maximum Sentence.....	100
Average Age at Admission to Prison.....	100
Average Age at Release to Parole.....	100
Gender.....	100
Race.....	100
Status.....	100
Most Serious Offense Category.....	100
Length of Stay in Institution	101
Region Paroled to.....	101
Minimum/Maximum Sentence.....	102

PAROLE DISCHARGES

Age at Parole Admission	103
Race.....	103
Average Age at Parole Admission	103
Status.....	103
Age at Release from Parole	103
Gender.....	103
Average Age at Release From Parole	103
Average Minimum and Maximum Sentence.....	103
Average Length of Stay on Parole	104
Average Length of Stay on Parole and Institution.....	104
Length of Stay in Institution	104
Length of Stay on Parole	104
Total Length of Stay in Institution and Parole.....	105
Most Serious Offense Category.....	105
Region Paroled to.....	105
Minimum/Maximum Sentence.....	106

PAROLE REVOCATIONS

Age at Release to Parole.....	107
Status.....	107
Average Age at Release to Parole.....	107
Gender.....	107
Age at Revocation.....	107
Race.....	107
Average Age at Revocation.....	107
Average Minimum and Maximum Sentence.....	107
Revocation Date.....	108
County Paroled To	108
Most Serious Offense Category.....	108
Minimum/Maximum Sentence.....	109

SECTION X—RECIDIVISM REPORT

Recidivism Data	110
-----------------------	-----

Annual Cost Report

NEBRASKA DEPARTMENT OF CORRECTIONAL SERVICES FACILITY ANNUAL COST REPORT FISCAL YEAR 2007

The graph below represents an allocation of all expenditures for all budgeted fund types for the Department of Correctional Services for the fiscal year. All direct and indirect expenses are allocated proportionately to facilities indicated below. The cost per inmate represents an average cost per inmate of all general, cash and federal expenditures excluding General Fund Aid expenditures.

FY 2007	Personal Services	Operations	Trans- portation ¹	Capital	Health Services ²	Education	Admin ³	Total	cost per day	cost per year
NCYF	3,440,751	523,864	20,828	53,296	552,042	25,936	558,450	5,175,167	150.20	\$54,822
TSCI	17,452,788	3,846,891	79,845	3,878	5,021,944	235,938	2,953,895	29,595,179	94.42	\$34,463
CCC-L	2,328,847	820,076	51,496	41,418	2,240,623	105,267	464,409	6,052,136	43.28	\$15,796
CCC-O	1,281,219	322,662	47,524	15,670	957,652	44,992	234,471	2,904,190	48.59	\$17,734
NSP	20,586,262	4,269,201	29,053	20,086	6,664,853	313,123	3,488,794	35,371,372	85.03	\$31,036
NCCW	6,008,270	1,056,463	20,489	17,723	1,859,750	87,373	959,952	10,010,020	86.24	\$31,476
DEC	6,195,839	1,236,117	14,293	5,114	2,072,906	97,387	1,036,143	10,657,799	82.37	\$30,067
LCC	10,682,047	2,308,353	14,908	52,748	2,875,705	135,104	1,823,348	17,892,213	99.68	\$36,385
OCC	8,430,306	2,102,682	53,629	20,586	3,479,443	163,468	1,470,403	15,720,517	72.39	\$26,421
WEC ⁴	3,121,689	409,967	78,790	3,588	409,412	19,235	525,436	4,568,117	58.21	\$21,247
Parole	1,644,587	230,620	94,475	0	0	0	299,733	2,269,415	8.24	\$3,008
Total	81,172,605	17,126,896	505,330	234,107	26,134,330	1,227,823	13,815,034	140,216,125	\$73.54	\$26,844
Fed Sup	149,470	268,498	3,636	0	0	0	72,630	494,234	n/a	n/a
Cent Ware	0	2,601,842	0	0	0	0	493,508	3,095,350	n/a	n/a
CSI	4,027,447	5,768,204	102,903	1,425,523	0	0	1,054,010	12,378,087	n/a	n/a
Rev Funds Total	4,176,917	8,638,544	106,539	1,425,523	0	0	1,620,148	15,967,671	n/a	n/a
Comm Serv	6,000							6,000		
Bldg Depr		997,490	0	0	0	0	0	997,490	n/a	n/a
Jail Reimb		3,910,000	0	0	0	0	0	3,910,000	n/a	n/a
Constr		0	0	2,090,168	0	0	0	2,090,168	n/a	n/a
Other Total	0	4,913,490	0	2,090,168	0	0	0	7,003,658	n/a	n/a
Total	85,349,522	30,678,930	611,869	3,749,798	26,134,330	1,227,823	15,435,182	163,187,454	n/a	n/a

1. includes \$591,156 of expense for State owned vehicles
2. includes medical, mental health and substance abuse expenditures
3. includes indirect expenditures allocated from Central Administration program and all expenditures from the Byrne Grants program
4. includes cost per day/year calculated using number of FY 2007 admissions of 215, other programs calculated using average daily inmate population

These averages can not be used to calculate reductions in inmate populations and corresponding reductions in expenditures. E.g. if you reduced a facility's population by 100, you could not use that facility's average cost per inmate times 100 to calculate the estimated reduction in expenditures

Employee Awards-2007

Governor Dave Heineman honored 38 employees for individual and team awards at the Nebraska Department of Correctional Services' 2007 Annual Awards Ceremony held on September 21, 2007, at the State Capitol.

The **Managers of the Year** went to Jay Miller, Michele Hillman, Brad McConnell, Curtis Moffat, Tim Siemek, Paul Turgeon, Doris DeSutter and Rick McNeese.



The **Process Action Team Award** went to Linda Bos, Stella Dargeloh, Kim Franssen, Bettey Gergen, Cathy-Gibson-Beltz, Ava Huber, Dallen Johnsen, John McGovern, Robert McPherson, Steve Ruiz, Ken Schmidt, Liz Stanosheck, Nancy Vossler, Steve Weis

The **Employee of the Year** awards went to Jeanette Emert, Michael Chulufas, Angela Folts-Oberle, James Jansen, Shea Pence, Paul Wood, Lorna Ellinger, and Beverlee Linder.



The **Team Award** went to Sara Flynn, Joel Fralin, Ross Pettinger and Phil Rabstojnek.

The **Individual Awards** went to Laura Farris, Leadership Award, Marica Owens, Community Service Award, Terry Ricketts, In The Line of Duty Award, and Jennifer Barid received the Outstanding Ambassador Award,



Deputy Directors

Frank X. Hopkins , Institutions

Robin Spindler, Administrative Services

Larry Wayne, Programs and Community Services

Deputy Director of Institutions

The Deputy Director of Institutions is responsible for the oversight of the following institutions and areas:

Diagnostic and Evaluation Center

Lincoln Correctional Center

Nebraska Correctional Center for Women

Nebraska Correctional Youth Facility

Nebraska State Penitentiary

Omaha Correctional Center

Tecumseh State Correctional Institution

Emergency Preparedness

Investigations

Drug Interdiction

Interpretation/Translation Services

Religious Services (Dual Supervision)



Deputy Director Hopkins has held a number of positions in the Department of Correctional Services, including Warden of the Nebraska State Penitentiary for nine years.

He has taught classes at Wesleyan University and earned a Masters degree in Criminal Justice in 1980.

Deputy Director Hopkins was appointed Deputy Director - Institutions, effective October 4, 1999.

The Deputy Director of Administrative Services is responsible or the oversight of the following programs and areas:

Budget Administration

Purchasing/Inventory

Accounting and Finance

Information Systems

Engineering

Safety and Sanitation

Accommodations Coordinator

Human Resources

Grants

Deputy Director Spindler has worked for the Nebraska Department of Correctional Services for over 15 years. She began her correctional career at the Omaha Correctional Center and has worked in various positions since that time.

Deputy Director Spindler has taught classes at Bellevue University and Kaplan University.

Deputy Director Spindler earned a Juris Doctorate in 1984.

She was appointed Deputy Director of Administrative Services in August of 2005



The Deputy Directory of Programs and Community Services is responsible for the oversight of the following institutions and areas.

Community Corrections Center-Lincoln

Community Corrections Center-Omaha

Work Ethic Camp

Adult Parole Administration

Central Records

Victim Assistance Program

Classification

Corrections Compact

Education

Library-Recreation & Law

Religious Services (Dual Supervision)



Deputy Director Wayne has worked for the Nebraska Department of Correctional Services for 30 years.

He has worked in various capacities within the Department and served as Warden ten years at the Nebraska Correctional Center for Women and three years at the Diagnostic and Evaluation Center.

He was appointed Deputy Director of Programs and Community Services in September of 2003.

Nebraska Department of Correctional Services

Ethics

We respect and protect the safety and rights of the public we serve.

We respect the importance of all programs/departments, within and outside of the Agency, in order to facilitate good communication and cooperation.

We respect and protect the civil and legal rights of all individuals. We will not use any type of cruel, inhumane or corporal punishment, excessive force or in any way mistreat individuals under the Agency's custody and control.

We preserve the integrity of private information.

We make all appointments, promotions and dismissals in accordance with rules, laws, and merit, rather than the furtherance of personal interest or favoritism.

We promote and contribute to a work place that is safe, healthy, and free of harassment in any form. We will not discriminate against any person because of race, sex, color, religion, ancestry, national origin, disability or age.

We keep conversations with all persons on a professional level at all times. We will not use profane or abusive language toward others. We communicate in a way that promotes respect and maintains satisfactory working relationships.

We will not bring in any type of contraband to an Agency facility/program area.

We will not use personnel, property, resources, or funds other than in accordance with prescribed constitutional, statutory, and regulatory procedure. We will be good stewards of state resources, including efficient use of our work time.

We maintain professional and credible behavior by exemplifying the Agency's Mission Statement and Vision Points.

**NDCS
Vision Points
1994-2004
2004-Present**

NDCS Vision Points

The first six vision points identified in 1994 have been incorporated into every facet of the NDCS, and continues to be a vital part of the Agency.

STAFF DEVELOPMENT AND PERSONAL MASTERY

To recruit and retain, at all levels, individuals diverse in background. To develop and maintain a positive environment and comprehensive training program that will enhance each employee's potential to achieve personal mastery.

HEALING ENVIRONMENT

NDCS strives to create and maintain an environment in which healing is paramount and inmates are able to acquire necessary skills, education/tools and treatment.

SHARED VALUES

Recognizing the inherent respect due all persons, the Nebraska Department of Correctional Services believes:

- ◆ Staff, volunteers and inmates have value and an opportunity to uniquely contribute to achieving our mission.
- ◆ Achieving our mission depends on teamwork in an environment of openness, inclusion, honesty, integrity and commitment.
- ◆ Leadership is a responsibility shared by all.
- ◆ Everyone has the potential to make positive changes in their attitudes, life skills, and conduct.
- ◆ Each of us should be accountable to ourselves and the public for the effective and efficient use of our time and all available resources to accomplish our mission.
- ◆ We must play an instrumental role in helping the community recognize its responsibility as a partner in achieving our mission.

CONTINUOUS QUALITY IMPROVEMENT

It is the vision of NDCS to foster the Continuous Quality Improvement journey, thereby creating an environment that is system-centered, which:

- ◆ supports Agency values and mission;
- ◆ opens communication;
- ◆ removes barriers at all levels;
- ◆ creates cooperative partnerships, trust, and respect;
- ◆ fosters ownership, commitment; and
- ◆ recognizes the leader in all of us.

CREDIBILITY

Proactively increase the Department's credibility and support both internally and externally.

COMMUNITY CORRECTIONS

The Department of Correctional Services will promote community corrections and alternatives to incarceration. The Department of Correctional Services will seek partnership with the private sector to create a continuum of sanctions and program opportunities during and subsequent to incarceration to facilitate successful re-entry into society.

- ◆ Create a partnership with private sector – to create work programs and treatment opportunities during and subsequent to incarceration.
- ◆ DCS will promote community corrections and intermediate sanctions and alternatives to incarceration.

CREDIBILITY

We commit ourselves to furthering public trust and credibility

SEAMLESS CRIMINAL JUSTICE SYSTEM

We commit ourselves through collaboration with other entities to create a seamless criminal justice system within a restorative justice framework

COMMUNITY AWARENESS AND INVOLVEMENT

We commit ourselves to partnering with the community to encourage awareness and involvement toward the successful reintegration of offenders

BEST PRACTICES

We commit ourselves to identifying and implementing best practices

FISCAL ACCOUNTABILITY

We commit ourselves to fiscal accountability and cost efficient and effective operations

OFFENDER ACCOUNTABILITY

We commit ourselves to developing and maintaining environments in which offender accountability will flourish

FAMILY INVOLVEMENT

We commit ourselves to developing and fostering strategies that allow families an active role in the offenders' incarceration and reintegration

COMMITMENT TO STAFF

We commit ourselves to partnering with staff who strive to optimize their contribution to our mission and standards

OFFENDER PROGRAMS

We commit ourselves to creating and sustaining meaningful program opportunities for offenders

MISSION STATEMENT

The Mission of the Department of Correctional Services is to serve and protect the public by providing control, humane care, and program opportunities for those individuals placed in its custody and supervision, thereby facilitating their return to society as responsible persons.

ADMINISTRATIVE SUPPORT

Legal

Legislative Liaison

Medical Administration

Planning, Research and Accreditation

Organizational Development / Staff Training

Cornhusker State Industries

Federal Surplus

NDCS Administrative Support

Legal Division **George Green, General Counsel 402-479-5735**

The Legal Division supports all Department of Correctional Services programs and institutions by giving legal advice and representation regarding labor relations, inmate rights, contracts, legislative issues, Inmate grievances, transportation orders, or matters involving litigation and the Courts. Legal Division staff work with the Courts, the Nebraska Department of Justice, attorneys, arbitrators, State Senators, the State Claims Board, the Office of Public Counsel, other State Agency officials, and the general public.

The Legal Division provides these services

- Decides administrative appeals filed by inmates from Institutional Disciplinary Committee decisions
- Investigates inmate grievances appealed to the Director
- Represents the Department before the State Claims Board
- Represents the Department before the Nebraska Equal Opportunity Commission
- Reviews legislative issues
- Advises Department staff on legal matters
- Promulgates rules under the Administrative Procedures Act
- Facilitates representation of Department staff by the Attorney General
- Conducts involuntary medication and involuntary transfer hearings for inmates
- Represents the Department in grievances under the State Personnel Rules or Labor Agreement
- Prepares and files with the courts transcripts for appeals filed under the Administrative Procedures Act contesting decisions of the Appeals Board
- Responds to requests for inmate records maintained by the Nebraska Department of Correctional Services
- Reviews employee discipline recommendations and workplace harassment allegations

FY2007 STATISTICS FROM THE LEGAL DIVISION

*1,139 inmate appeals of IDC decisions were heard by the Appeals Board - A total of 18 (1.55%) less than FY2006 -

*32 APA's (litigation filed in District Court under the Administrative Procedures Act) were filed in District Courts-a total of 9 cases (21.95%) less than FY2006.

*257 Tort Claims/Miscellaneous Claims filed by inmates or staff were processed— a total of 27 (10.50%) more than FY2006.

Legislative Liaison **Connie Nemec 402-479-5713**

The Legislative Liaison serves as a point of contact between the Department of Correctional Services and the Governor's Policy Research Office and the Legislature. This position reports directly to the Director, also serving as an Administrative Assistant to the agency head. The Legislative Liaison is tasked with coordinating all aspects of the legislative process within the agency.

Medical Administration
Dr. Randy Kohl, Medical Director
Brian Marshall, Health Care Administrator
Cameron White, Behavioral Health Administrator

MISSION

The Health Services section of the NDCS provides humane, comprehensive, and integrated health care; including program opportunities consistent with the standards of quality and scope of services found in the community to promote the health and well being of those Individuals placed in our custody.

VISION

The Health Services Department strives to continually improve the health of the individual placed in our custody by developing integrated delivery systems that efficiently provide a continuum of needed accessible and quality health services.

Health Services are provided at the Nebraska Department of Correctional Services (NDCS) facilities for all inmates under the jurisdiction of NDCS. The purpose of Health Services is to ensure that all inmates receive services designed to maintain good health.

This is accomplished by providing a wide range of health services. Due to the nature of the health care delivery system, medical staff provides inpatient and outpatient services through an integrated medical, mental health, psychiatry and substance abuse team approach. The NDCS has three hospitals located at the following institutions: Nebraska State Penitentiary – twelve (12) beds; Diagnostic and Evaluation Center – eight (8) beds and the Tecumseh State Correctional Institution (TSCI) – ten (10) beds. In addition, the NDCS has ten medical clinics located at the following institutions: Nebraska State Penitentiary (NSP), Diagnostic & Evaluation Center (DEC), Tecumseh State Correctional Institution (TSCI), Lincoln Correctional Center (LCC), Omaha Correctional Center (OCC), Community Correction Center-Omaha (CCC-O), Community Corrections Center-Lincoln (CCC-L), Nebraska Correctional Center for Women (NCCW), Nebraska Correctional Youth Facility (NCYF) and Work Ethic Camp (WEC). All hospital facilities are licensed by the Department of Health and Human Services and fully comply with all requirements imposed by that department.

SERVICES PROVIDED

- Medical, nursing, mental health, substance abuse and psychiatric care
- All routine health care, including preventative services
- Inpatient primary and secondary care
- Chronic care clinics
- Specialty clinics
- Diagnostic radiology services
- Laboratory services
- Optometry services, including dispensing of eyewear
- Physical and speech therapy
- Audiology
- Patient education
- Medical records
- Dental services
- Dietary
- Pharmacy services
- Medical supply services

NDCS Administrative Support

SIGNIFICANT ISSUES

- Complete implementation of the Nebraska Correctional Health Care Services Act (Legislative Bill 154)
- Unified mission/vision/values
- Revise present inmate intake and discharge health process
- Expand QA and peer review process
- Centralize pharmaceutical services
- Improve medication distribution process
- Develop electronic health records system
- Develop standardization of processes and procedures
- Achieve and maintain American Correctional Association (ACA) standards

SUBSTANCE ABUSE TREATMENT SERVICES

A major goal of the Department of Correctional Services (DCS) is to provide a secure and safe environment that is consistent with the goals of the Substance Abuse Treatment Services and the Health Services Section. The DCS provides the following Levels of Care: Residential, Non-Residential, Assessment and Evaluation, and Emergency. Various services are available within each Level of Care and are provided by clinicians based upon the identified inmate needs.

The Residential Treatment Community (RTC) for male inmates, located at the Nebraska State Penitentiary, functions as one of four DCS long-term residential treatment programs for substance abusers and coordinates substance abuse treatment services for all inmates committed to DCS at the various facilities. The second long-term residential substance abuse treatment program for male inmates is located at the Omaha Correctional Center/Substance Abuse Unit (OCC/SAU). A third long-term residential substance abuse treatment program for males is at the Tecumseh State Correctional Institution/Substance Abuse Unit (TSCI/SAU). The fourth long-term residential substance abuse treatment program is for female inmates at the Nebraska Correctional Center for Women/Substance Abuse Unit (NCCW/SAU). Additional non-residential service levels for substance abuse treatment are located at all adult correctional facilities operated by the DCS, as well as at the Work Ethic Camp.

The residential substance abuse programs house 100 males at the RTC, 72 males at the OCC/SAU, 32 males at TSCI/SAU, and 28 females at the NCCW/SAU. Inmates assigned to the RTC, OCC/SAU, and NCCW/SAU are minimum custody, and generally within 1 - 2 years of parole eligibility or discharge. The inmates assigned to the TSCI/SAU are medium or maximum custody and generally have much longer sentences. The inmates assigned to the residential treatment programs have been identified as having a serious substance abuse problem in conjunction with criminal activity. These residential treatment programs each last approximately ten months and require participants to take responsibility for their actions; participate in all program components such as individual counseling, classes and groups; and accept the obligation to practice new attitudes, thoughts and behaviors. The residential treatment populations are comprised of groups of inmates having distinct qualities and backgrounds, who share joint ownership in environments designed to manifest changes in self-defeating behavior and the creation of healthy lifestyles.

The purpose of each of DCS's four residential treatment programs is to provide a healing environment to include the opportunity for incarcerated individuals who are substance abusers to engage in treatment which intervenes in the destructive thinking behavior and lifestyle associated with substance abuse and criminality. Programming is designed to provide a holistic treatment environment. This holistic treatment environment includes areas of group counseling, individual counseling, substance abuse education, cognitive-behavioral classes, recovery and relapse prevention classes, social responsibility, physical fitness, spirituality, health and work.

The structured programs allow for integration of learned concepts into applied behavior. Staff works together to assess progress, address behaviors, and encourage change. Considerable focus is maintained on how behavior impacts others, as will be the case in the community at large upon the inmate's release. Learning new skills, gaining information, remaining abstinent from mood altering chemicals, and emotional, spiritual and philosophical growth are important aspects of each program. The diversity and reality of the therapeutic approach combined with the acquisition of new information and skills will enable each inmate to think constructively, act responsibly and decrease negative consequences for self and others.

NDCS Administrative Support

The Non-Residential services include Intensive Outpatient, Outpatient, Relapse Prevention, Aftercare, and Drug/Alcohol Education. Various programmatic offerings within each service level are determined by the need of the inmate population at each institutional site. They commonly deal with issues of substance abuse and criminality, as well as transition issues for those heading directly back to life in the community.

Assessment and Evaluation services begin at the DCS reception centers where professional substance abuse treatment clinicians determine the most appropriate levels of care for incoming inmates. Additionally, at each institution, evaluations are provided to inmates planning to participate in post-incarceration follow-up substance abuse treatment in the community. Emergency services are provided under the direction of physicians, generally within DCS hospitals.

PERFORMANCE AND EVALUATION MEASURES

Recidivism/New Felony Convictions (cumulative):

Recidivism is tracked at the Department level and is not detailed by the institution. Recidivism is measured by criminal acts that result in conviction by a court when committed by inmates released from the Nebraska Prison System during a specified base time period who return to the Nebraska system within three years of their release date.

However, the Substance Abuse Treatment Services have tracked the number of program graduates since the opening of NCTC in September 1994, in all its residential and non-residential programs and compared the list with those who return to the DCS with new felony convictions. The cumulative new felony rate is 5.3% for all program graduates since 1994. Over 4000 inmates received primary treatment for substance abuse, in addition to drug/alcohol education since 1994. During each of the past two calendar years, approximately 35% of the DCS inmate population annually participated in substance abuse treatment.

STAFF TRAINING

All Substance Abuse Treatment staff are required by Title 209 to earn an average of 25 Continuing Education Units annually to maintain the state-required certification requirements. Additionally, all substance abuse staff must meet or exceed the training requirements listed in the American Correctional Association's Adult Correctional Institutions (ACI), 3rd and 4th Edition Standards.

INMATES IN INTERVENTION PROGRAMS

Each of the inmates assigned to Residential substance abuse treatment programs in the DCS is required to participate in an individualized program developed from the following elements: Group Counseling, Individual Counseling, Substance Abuse Education, Recovery, Relapse Prevention Classes/Groups, Cognitive Restructuring Classes/Groups, Gender-Related Issues, Life Skills, Leisure Skills Classes, Physical Fitness and Health, Work, Self Help Groups, Relaxation Groups, Health Education, and ongoing programs from Metro Community College for Adult Basic Education (ABE), General Education Diploma (GED), English as a Second Language (ESL), Relationships, Parenting and Money Management.

Non-residential Substance Abuse participants have opportunities for Alcohol/Drug education, Recovery programs, Cognitive-Behavioral programming, Relapse Prevention, Aftercare, Transition planning, and Referral Services.

MENTAL HEALTH

The Mental Health Department provides not only Critical Incident Stress Management (CISM) for both staff and inmates, it also provides: crisis intervention, individual /group therapy, psychological evaluations, psychiatric consultations, and education to inmates throughout the Department of Correctional Services (DCS). In addition to these services, the Lincoln Correctional Center (LCC) houses modified therapeutic communities that treat the mentally ill, the socially and developmentally impaired, and sex offenders in intensive treatment and therapy. In accordance with DCS's Mission Statement, the Mental Health Department emphasizes education, training, and consultation among staff regarding mental health issues and inmate management.

STAFF TRAINING

Clinical psychologists and licensed mental health practitioners must maintain their licensure as required by the Health and Human Services System, and comply with Nebraska state law and ACA Mandatory Standards. Through training, clinical staff stay knowledgeable of developments or treatments in; sex offenders, criminality, mental illness, psychological evaluation, and other similar courses which benefits the inmates, the safety and security of the institutions, as well as the public, once an inmate leaves the institutional setting.

INMATES IN INTERVENTIVE PROGRAMS

Department wide, the proportion of inmates receiving mental health services continues to be 36%. Psychiatric medications are prescribed for 21% of inmates. These percentages are significant, since inmates receive mental health services on a voluntary basis. The primary objective of the Mental Health Department is to provide excellent and effective mental health services to the inmate population, the goal being to assist them in changing their criminal thinking and behaviors. To achieve this goal, the Mental Health Department first identifies, then evaluates and attends to inmate needs using outpatient individual/group therapy, or, in more severe cases, intensive inpatient programs. Before an inmate is released from incarceration, the Mental Health Department reviews the progress in programming; inmates are often referred to community mental health, or private agencies to maintain a continuity of care. Inmates who are deemed dangerous to self and/or others, are referred to county attorneys for Mental Health Board commitment hearings. The Mental Health Department's second treatment goal is to help reduce inmate recidivism numbers thus increasing public safety, and giving the Nebraska Community effective, efficient, and quality mental health services for their tax dollars.

PLANNING, RESEARCH AND ACCREDITATION (PRA)

Steve King, Manager 402-479-5767

The PRA manager provides guidelines, oversight, and structure for the planning process through-out the department to ensure consistency with vision points, key initiatives, core values and goals. He provides assistance, as needed, to institutional and program planning processes; and supervision and assistance in the following areas:

RESEARCH

Steve King 402-479-5767

PRA reviews all research designs and proposals, whether internal or external to the agency, to ensure compliance with the agency's goals and objectives, rules and regulations, and the maintenance of privacy rights for participants. A review of the purpose, hypothesis, methodology, and data requirement for all research proposals is conducted to assess the potential impact (benefits, security issues, cost, and staff resources). PRA works closely with universities, students, and independent researchers, to facilitate research within the Agency.

ACCREDITATION

Anne Locke 402-479-5810

The Department of Correctional Services has been involved in the Accreditation process since 1979. All of the Department state institutions, Central Office, Staff Training Academy and Adult Parole Administration are accredited. After initial accreditation, institutions and programs are audited every three years in an effort to maintain accreditation. Accreditation offers the opportunity to evaluate the Department's operations against national correctional standards, remedy deficiencies, and upgrade the quality of correctional programs and services. Benefits of the accreditation process include improved management and conditions of confinement. Accreditation also increases accountability and enhances public credibility for administrative and line staff. The process provides for a safer and more humane environment for personnel and offenders. This process has assisted the Department by establishing criteria for upgrading programs, personnel and physical plant on a continuing basis.

ACA is revising all existing standards to facilitate performance measures. The move towards performance measures requires a "fundamental shift in thinking" for the field of corrections. Instead of showing standard compliance through activities or practices, a specified condition will need to be measured and achieved. Performance based standards require corrections to embrace the concepts of Continuous Quality Improvement and challenge the traditional ways of thinking and operating.

PLANNING, RESEARCH AND ACCREDITATION (PRA) continued..

Performance based standards will not only affirm that the Department is meeting its mission, but provide a measurement of its efforts. Operational effectiveness and efficiencies will be measured over a three-year accreditation/audit period. The measurements will enable the Department to benchmark services and improve the quality of life for staff, inmates and the public. During 2006 the Central Office and Staff Training completed their initial ACA Audits. Cornhusker State Industries will have its initial ACA audit in 2007. At this point, Nebraska will join only a handful of other agencies in the United States that have every facility and program accredited. Performance based standards will help the State meet the unique challenges facing corrections today.

POLICY

Anne Locke 402-479-5810

The department's Annual review of two hundred and fifteen (215) Administrative Regulations is coordinated through planning, Research and Accreditation (PRA). Policy Directives issued from the Director are tracked by PRA for incorporation into Administrative Regulation Policy. PRA maintains the Agency's Administrative Regulation history file and updates Administrative Regulations and Policy Directives on the intra-agency network and the NDCS official web site. In 2007, sixty-four Administrative Regulations were placed on the Corrections Website.

ANNUAL REPORT AND STATISTICAL SUMMARY

Anne Locke 402-479-5810 Becki Hickman 402-479-5760

Planning, Research and Accreditation is responsible for compilation and distribution of the Annual Report and Statistical Summary.

APPLICATIONS DEVELOPMENT/STATISTICAL REPORTING

Becki Hickman 402-479-5760 BJ Spring 402-479-5662

During fiscal year 2006, Planning & Research and DAS IMS converted 30 inmate information based databases to the Corrections Website, a web-based application, along with the conversion of 1200 reports to Siebel, a web-based report writer system. Applications such as Misconduct Reports, Visitors, Central Monitoring, Family, and Criminal History, to name a few, were moved from the VM mainframe system, which ceased to exist after June 30, 2006. There are currently 615 Siebel and Corrections Website users that access the Intranet 24 hours a day to enter data and run reports from their workstations throughout all of the Institutions, Parole Offices and Central Office.

DRUG TESTING/CRIMINAL INFORMATION

Jeff Peterson 402-479-5912

Drug Testing

The Department's Inmate Random Drug Testing Positive Rate decreased for FY2007. A total of 6071 Facility Random Drug Test were submitted with a positive rate of 1.27%. This compares with 1.76% for FY2006. NDCS continues to use all drug interdiction tools available to maintain a safe and drug free Department.

The department remains committed to a zero tolerance drug policy.

PLANNING, RESEARCH AND ACCREDITATION (PRA) continued..

Criminal Information

In FY2004, the Nebraska Department of Correctional Services was chosen by the National Institute of Justice for a Data Mining Sharing Initiative Project. The goal was to assess, review analytical & presentation software, and review data mining capabilities of intelligence/information data would assist local and regional law enforcement.

Since then, we have taken various steps to share Intelligence/Information data with local, State, and Federal law enforcement entities. During FY2007, NDCS continued sharing Intelligence/Information data with these agencies to better serve the State of Nebraska. This is being done by Criminal Analyst working closely with the NDCS investigators, continued networking and communication with law enforcement agencies and the sharing of data through the NIJ Data Mining Sharing Initiative Project. NDCS will continue to provide NDCS Intelligence/Information to the users with the greatest need in a timely manner.

Performance Based Measurement System

BJ Spring 402-479-5662

The Department has joined the Association of State Correctional Administrators (ASCA) in supporting the Performance Based Measurement System (PBMS), which systematically collects, manages and shares data across jurisdictions, enabling administrators to identify strengths and weaknesses internally and in comparison with other correctional systems. It's purpose is to develop a consistent and meaningful correctional performance measures for adult prisons and community-based programs and to develop an automated system that would enable the collection, management, and sharing of that data – specifically in the areas of Public Safety, Institutional Safety, Mental Health and Substance Abuse, Justice, Academic Education, and Offender Profile/Contextual data.

In late 2005, NDCS joined a smaller but growing group of prisons that are currently inputting information into the system. In 2007, NDCS continues to redevelop our information gathering practices to incorporate current and future PBMS needs. In the near future, ASCA will add new Health Care measures to the PBMS.



**Staff Training Academy
(STA)**

**2320 N. 57th Street
Lincoln, NE
402-471-1781**

Training & Development Manager

Ken Sturdy

**THE ACADEMY INSTRUCTED OR FACILITATED THE INSTRUCTION OF OVER
*3,100 STUDENTS DURING FY2007**

* (this number does not include the numerous drop-ins for individual classes)

The Academy offers or helps coordinate the following:

Pre-Service Training
In-Service Training
Mid-Management Training
Field Training Officer (FTO) Schools
EAP courses bi-monthly for Support Staff
Instructor Schools
Seasonal Range classes
NIC Videoconferences
Corrections Learning Network
Special classes as needed

The Academy facility includes

Three large classrooms
Gymnasium
Large Break room
Firearms Simulator system
4 inmate cells for training scenarios
Conference Room
Resource Center
103 stall parking lot
Internet access in each classroom
and research area

Training Specialists

Levi Bennett

Jerry Bryan

Bruce Kramer

Russ Smith

Jen Westwood

Susan Phinney

William Boucher

SecretaryII

Linda Schwaninger

NDCS Administrative Support

ORGANIZATIONAL DEVELOPMENT

Laura Farris , Organizational Development Manager 402-479-5660

The purpose of Organizational Development is to continue to facilitate a Total Quality approach of organizational transformation at the Nebraska Department of Correctional Services by evaluating current policy and practice.

DCS continues to work towards an agency-wide transformation in which we shift how we fundamentally think and work together. To date, several integrated initiatives have been designed and implemented to aid in this transformation.

Continuous Quality Improvement (CQI) CQI is a philosophy and strategy for continuously improving performance at every level of the organization and in all areas of responsibility. CQI is a total systems approach that promotes innovation, leadership, creativity and personal mastery. There are several active Quality Councils in the Department and training efforts are continuous. Courses offered include Quality Awareness, Teams, Tools, and Techniques, Meeting Facilitation, Systems and Dialogue, Advanced Dialogue, and Correctional Leadership

Diversity - This initiative was first identified in 1991 and established in 1992 and has involved extensive work including diversity training, a work environment survey, policy revisions, and awareness efforts. In addition, the Department recognized that its strength and its major resource in achieving goals and objectives is the agency's staff. Human relationships provide the cornerstone of all Departmental efforts. Work continues in recruiting, retaining, and training culturally and ethnically diverse staff.

Transformational Leadership - Beginning in 1994, the Department started putting senior leadership through required readings, discussions, and training. This effort was later extended to upper management and some middle management. Transformational Leadership theory and principles are built into the course curriculum taught at DCS.



Cornhusker
State Industries

800 PIONEERS BLVD.
LINCOLN, NE 68502
402-471-4597 OR 1-800-348-7537

CSI Management Team

John McGovern	Administrator/General Manager
Steve Neff	Assistant Administrator
Jim Brebner	Assistant Administrator
Mike Martin	Budget Officer III
Jeremy Elder	Manufacturing Manager
Kate Severin	Sales & Marketing Manager
Jeff Houdek	Quality Assurance
Jim Oliver	Warehouse Manager/Inventory Control
Paul Norrid	ACA/HR/Safety Manager
Brad Frandsen	Federal Surplus Property Manager

CSI MISSION STATEMENT

Cornhusker State Industries strives to be the government provider of choice by combining superior products with superb customer service, and to support public safety by developing positive skills and behaviors within our inmate employees, thereby facilitating their re-entry into society as responsible, marketable individuals.

CSI—WE BUILD OPPORTUNITY

During FY2007, CSI achieved ACA accreditation, redesigned its' logo, motto, mission statement, showroom, and marketing materials; began work toward a fully integrated NIS Sales and Manufacturing implementation; neared completion of a 7000 square foot woodshop at the Tecumseh State Correctional Institution; increased laundry operation capacity by remodeling the laundry at the Nebraska State Penitentiary; added new and expanded existing PIECP operations; and employed 550 inmates within traditional shops and private venture operations resulting in over 690,752 hours of inmate labor. Private venture contributions returned to the community in the form of state and local taxes, victim reparations, inmate room and board, family support, and release savings topped \$432,000 in FY 2007. CSI also processed over 6.3 million pounds of laundry and drove more than 374,000 miles throughout the state making deliveries to customers.

NDCS Administrative Support

As FY2008 unfolds, CSI will commence manufacturing at the new TSCI woodshop, continue implementation of the NIS Sales and Manufacturing module, and enter the design phase for new buildings potentially located in Tecumseh, York, and Omaha. We will continue to focus on improving and expanding our Braille transcription capacity (of which we are a leading program nationally); Print Shop capabilities; research and design initiatives for custom and stock furniture lines; continue customer-friendly improvements to the CSI website; expand the CAD capacity of our drafting locations; and market ourselves with confidence to the ever-expanding school and library segments of our customer base.

For more information about CSI's multiple product lines, programs, and history, please visit our showroom at 800 Pioneers Blvd, call us at 800-348-7537, or browse our website at www.corrections.state.ne.us/csi.

Federal Surplus Property
Brad Frandsen, Manager
402-471-2677

Federal Surplus Property's (FSP) purpose is to screen, receive warehouse, refurbish and distribute surplus federal property to eligible state and local government subdivisions and certain non-profit education and health related institutions and agencies providing assistance to the homeless and needy. Service charges received from those eligible (designated as "donees") make the agency self-supporting through its revolving fund.

Federal Surplus Property (FSP) was also appointed by the Governor of the State of Nebraska to administer and coordinate the transfer of excess federal property to Law Enforcement Agencies within the State of Nebraska. Service charges received from the eligible Law Enforcement Agencies (designated as "LEA's") make the agency self-supporting through its revolving fund.

*The agency's program is operated by DCS through Cornhusker State Industries (CSI).

ADMINISTRATIVE SERVICES

Accommodations Coordinator

Finance and Accounting

Budget

Engineering

Human Resources

Information Systems

Procurement

Safety and Sanitation

Grants

NDCS Administrative Services

ACCOMMODATIONS COORDINATOR

Elizabeth Stanosheck 402-479-5614

The Nebraska Department of Correctional Services is committed to ensuring that compliance to all aspects of the Americans With Disabilities Act is met. The office of the ADA Coordinator responds to all requests for accommodation/s from DCS employees, inmates and the public. It is also responsible for the development, review and revision of Departmental policies and procedures to ensure compliance. This Division is responsible for the Return To Work policy which assists employees injured on or off the job, or who have an illness that affects their ability to perform their job, to return to work in a modified status.

FINANCE AND ACCOUNTING

Inga Hookstra, Controller 402-479-5756

The Accounting Division has responsibility for all financial and inmate accounting functions for the Department of Correctional services. Additionally, the Accounting Division is responsible for establishing uniform accounting practices and procedures within the Department of Correctional Services consistent with state policy and practice, as well as generally accepted accounting principles. The Accounting Division is responsible for providing fiscal support to all programs and facilities within the Department.

Financial Accounting functions include both accounts payable and accounts receivable. This includes payments for all goods and services received by the Department regardless of funding source, including verification that all payments are appropriate through the pre-audit process. Accounts Receivable covers all billings both internal and external to state government, including Cornhusker State Industries, Federal Surplus Property, and county safekeepers. Reports from the Nebraska Information System are generated and made available to the various staff throughout the Department electronically.

Inmate Accounting provides for a system of accounting for all inmate funds through the Inmate Trust Fund and ledgers maintained in the Correctional Information and Tracking system. The functions include processing transactions related to the various accounts (institutional, confiscated, restitution, maintenance, suspense, savings, and legal) held by inmates and reporting necessary to inmates, courts, and other authorized entities. Inmate Accounting also receipts, tracks and reports on parole programming fees.

The Accounting Division is also responsible for all fiscal reporting on grants and preparing various financial statements, including canteens, Cornhusker State Industries, and Federal Surplus Property. Additionally, claims are audited and processed in accordance with the law for the County Jail Reimbursement aid program.

BUDGET

Kate Morris, Budget Management Analyst 402-479-5702

The Budget Management Analyst is responsible for planning, organizing, monitoring and reporting the Department's fiscal allocations and fiscal reporting systems. She also analyzes, manages and reviews the preparation, documentation, implementation and control of program budgets including the biennium and deficit budget processes. Fiscal and accounting data are compiled for use in budget evaluation and adjustment, cost analysis, budget projections and reporting. The areas of responsibility also include the fiscal note process and supervision of the Central Office Business Manager.

NDCS Administrative Services

ENGINEERING

Doug Hanson Facilities Engineering Manager 402-479-5742

The engineering division provides the department with technical and facilities management assistance for construction projects of all sizes, from the preliminary planning stage to completion and readiness for occupancy. The engineering division is responsible for the development and implementation of the capital construction budget and deferred repair program for all state correctional facilities.

Facilities engineering works with the correctional administrators in the planning, design, construction and occupancy of new and remodeled facilities.

Engineering provides technical assistance for utility and energy contracts. The engineering staff provides guidance and technical assistance to the various facilities and programs to manage their maintenance programs. Engineering also oversees the maintenance and custodial program (maintenance section) for the central administrative buildings.

The engineering division also has oversight of the safety and sanitation section. The safety and sanitation section is responsible for addressing the safety functions of DCS, provides periodic inspections of all facilities, and provides assistance in the accreditation process. This section works closely with the state fire marshal's office and other regulatory agencies in the resolution of compliance issues involving all DCS facilities.

PROCUREMENT

Jan Lehmkuhl, Materiel Administrator 402-479-5714

The Purchasing Section is responsible for procurement of all goods/services, inventory control processes, the operation of the DCS Central Warehouse, the operation of Staff Clothing-Issue, and the coordination of form usage within the Agency. The Materiel Administrator is responsible for the review, coordination and approval of all Purchasing functions of the Agency.

Purchasing actively pursues the acquisition of quality products and services at the most economical cost. This is done in part by assuring the accuracy of specifications, competitive bidding, quality control checks of deliverables, utilizing Department of Administrative Services (DAS) commodity contracts, coordinating shared contracts with other State agencies as appropriate, monitoring vendor and contractor performance and by utilizing Cornhusker State Industries as a preferred Agency source. DCS Purchasing staff is responsible for ensuring products and services are delivered timely and received as ordered. They interact with facility and program staff to assure end-user needs are being met, to address procurement and/or receiving issues and to coordinate completion of Agency service contracts.

Inventory responsibilities include the tracking of all Fixed Assets within the Nebraska Information System (NIS) and the formulation of standardized supply inventory practices throughout the Agency. Inventory actions involving DCS owned property is monitored and annual reports regarding DCS Fixed Assets are submitted to DAS as appropriate. The DCS Materiel Control Manager is responsible for coordinating the motor vehicle needs of all DCS facilities and programs. This includes monitoring vehicle mileage logs, coordinating movement of vehicles within the Agency, coordinating vehicle repairs, appropriate processing of accident reports and coordination of vehicle purchases/leases.

The DCS Central Warehouse services all Lincoln facilities. The operation has a dual purpose – to fill facility and program requisitions from stock for standard, frequently used products and to receive all deliveries from outside vendors for each of the DCS Lincoln locations.

All staff uniforms are issued and tracked through the centralized Clothing Issue operation. Clothing Issue is responsible for both the initial issue to new hires and replacements to existing staff.

HUMAN RESOURCES

Marian Layman, Human Resources and Development Administrator 402-479-5752

The Human Resource Section is responsible for providing all aspects of human resources management for the Department of Correctional Services. For Fiscal Year 2007 this includes **2300** full time employees working in two hundred plus different job classifications. The Human Resources Section oversees administration of three different sets of employee work rules: two Labor Contracts; one with the Nebraska Association of Public Employees and the second with the State Code Teachers Association; and for all other employees the Nebraska Classified System Rules and Regulations.

The Human Resources Section also administers the following areas: labor relations, tuition assistance, recruitment and retention, conflict resolution, discipline, classification and compensation, employee assistance program, affirmative action, payroll and benefits, Agency Personnel Almanac, Human Resources Information System, Employee Physical Exam process, criminal records checks, pre-employment, random drug testing, and correctional officer testing.

Note: Agency Employee Profile on Following Page

NDCS Administrative Services

AGENCY EMPLOYEE PROFILE

Agency Authorized FTE (FY 2006-2007):	2283.5
Authorized Custody FTE (Co, Cpl, Sgt.):	1040
Authorized Unit Caseworker FTE:	226

Agency Current Vacancy Rate as of 11/02/2007	9.2%
Custody Vacancy Rate (CO, Cpl, Sgt) as of 11/02/2007	10.77%
Unit Caseworker's Vacancy Rate as of 11/02/2007	4.0%

*Source Basic Compensation report 11/02/2007

EEO STATISTICS:

TOTAL:

White-	2271
African American-	119
Hispanic-	81
Asian or Pacific Islander-	23
Other-	33

BY GENDER:

MALE:

White	1497
African American	71
Hispanic	58
Asian or Pacific Islander-	18
Other-	20

FEMALE:

White-	774
African American-	48
Hispanic	23
Asian or Pacific Islander-	5
Other-	13

*Source Basic Compensation report 3/31/2007

TREATMENT STAFF:** (Numbers reflect "Authorized" FTE, not "Filled" FTE. The Authorized FTE reflects positions providing direct treatment, excluding administrative positions, E.G., Director of Nursing or Administrator of Substance Abuse, etc. Numbers do not include contracted Health Services for TSCI.)

Physicians-	3
Physicians Assistants-	6
Nurse Practitioner-	1
Nurses-	48.5
Dentists-	4
Dental Assistants-	5
Clinical Psychologists-	12
Psychologists-	3
Mental Health Practitioners-	27
Substance Abuse Counselors-	44
Teachers-	3

(The Department Employs 3 Teachers for NCCW: The Department contracts for all other educational services.)

NDCS Administrative Services

SAFETY/SANITATION **Steve Vodicka 402-479-5778**

This section is responsible to provide a secure and safe environment for both staff and inmates to realize individual potential.

The safety and sanitation functions are accomplished through inspections of all facilities on a periodic basis. The inspections are used to identify and assist in the correction of safety hazards and sanitation needs. Administrative Regulations are developed and revised in order to comply with American Correctional Association (ACA) standards and other state and federal statutes, codes and regulations, Occupational Safety and Health Administration (OSHA) regulations, the National Electrical Code (NEC), and National Fire Protection Association (NFPA) standards. The Safety Coordinator conducts quarterly OSHA training for employees, is a regular member of the DCS internal auditing team and has responsibility for the Department's asbestos abatement program and environmental monitoring program.

INFORMATION SYSTEMS **George Wells, Information Systems Manager 402-479-5658**

The Information Systems (IS) Department is responsible for providing computer support to all DCS staff, Cornhusker State Industries (CSI), and the staff and members of the Nebraska State Board of Parole. Today, there are approximately 1300 computers and 64 servers dispersed to 20 different sites. Additional wiring is being completed to support the Tecumseh State Correctional Institution (TSCI) Tele-health video conferencing system; NIS Sales and Manufacturing modules within the CSI shops; on-line legal research by inmates; updated technology in the Braille, CAD, and Print shops; additional security and building automation systems; and increased staff email and Internet use.

The Information Systems Department provides administration and management of the NDCS network and provides assistance to all staff in the definition of technical requirements to meet the needs of new application software, systems, or changes in functional requirements. Installation and repair of computer systems and peripherals, as well as the ordering of replacement equipment and keeping current the inventory of computer assets are also the responsibility of the Information Systems Department.

GRANTS ADMINISTRATION **Patricia Sattler, Federal Aid Administrator III 402-479-5544**

The Federal Aid Administrator III is responsible for coordinating and managing all aspects of the department's grant activities from federal, state, and other funding sources to support worthy and qualifying projects. She is also responsible for providing technical assistance to agency staff on all grant activities including preparation, application, monitoring, and reporting.

Additionally, the Grants Administration section is responsible for reviewing and responding to all sub-grantee applications and inquiries as well as conducting program audits to ensure activities are carried out in a responsible and consistent manner as per grant guidelines. This position works closely with the Accounting Division for fiscal monitoring and reporting on all grants.

Programs and Community Services

Community Corrections Facilities

Community Corrections Center-Lincoln

Community Corrections Center-Omaha

Work Ethic Camp

Community Corrections Center-Lincoln

Community Corrections Center-Lincoln (CCC-L)



Rex Richard, Warden

2720 West Van Dorn
Lincoln, NE 68522
402-471-0740
Assistant Warden

Donn Beaver

SECURITY LEVELS
COMMUNITY A AND COMMUNITY B

The Department's community correction facilities in Lincoln and Omaha are designed to provide the initial step that many offenders take in returning to Nebraska's communities. This is accomplished through a graduated release and a systematic decrease in supervision and corresponding increase in responsibility. Inmates nearing release on parole or discharge from sentence are eligible through a classification system to be promoted to community custody status. Inmates on Community A are assigned to a detail within the facility, assignments within other state agencies, or work assignment in the community. Community A inmates are furnished clothes, room and board and a daily wage. Community B inmates participate in the work and education release program. Inmates on work release are employed in the community, receive competitive wages and pay applicable taxes. Inmates on educational release attend local vocational, technical, business colleges and universities. Community B inmates are responsible for their own clothing and personal items and pay room and board costs of \$10.00 per day.

Programs: Work detail, work release, educational release, furloughs, ABE/GED, and substance abuse programming; community activities passes (e.g. recreation, shopping, religious) and other programming (family counseling, mental health, AA/NA) may be arranged through community support programs and agencies.

Community Corrections Center-Lincoln is a Ventures In Partnership (VIP) participant with Roper Elementary School located a short distance northeast of the Corrections Center.

The Work Release Program has been a part of Nebraska Correctional Services since 1967
For more information about CCC-L, contact Public Information Officer, Pam Prater @ 402-471-0740



Design Capacity - 200
Average Population 383
Number of Staff 48.75
Cost Per Inmate Per Year:
\$15,796

ACA ACCREDITED SINCE 1981

Community Corrections Center-Omaha

Community Corrections Center-Omaha

(CCC-0)

2320 Avenue J
Omaha, NE 68110
402-595-2010

Assistant Warden
Edward Fabian

Security Levels

Community A and Community B



Ryan Mahr, Warden

The Community Corrections Center-Omaha houses inmates who are classified at Community A or B custody levels and are near the discharge of their sentence or pending a parole hearing. Inmates on Community A are assigned to work crews where they work under the supervision of a DCS/state employee. Work Detail crews may provide services that support the facility such as food preparation, housekeeping, and general ground and building maintenance. Other crews perform community service work like maintaining state and city parks, vehicles, roads, bridges and duties for other state facilities. Room, board, and clothing are provided. The inmate is paid a daily wage. All NDCS inmates are required to save 5% of their net earning in a release savings account.

Work Release (Community B) inmates are employed in the community and earn a competitive wage. All applicable taxes on wages are paid, in addition to paying \$10.00 per day room and board fee. Educational Release inmates attend local vocation/technical schools, community colleges and universities. They may elect to perform regular work duties or accept part-time employment to pay for their room and board.

Programs: Work detail, work release, educational release, furloughs, ABE/GED, and substance abuse programming; community activities passes (e.g. recreation, shopping, religious) and other programming (i.e. family counseling, mental health, AA/NA) may be arranged through community support programs and agencies. CCC-O (originally OCC-Work Release Unit) has been a part of Correctional Services since 1971. The current facility was constructed in July of 1985.

For more information about CCC-O, contact Public Information Officer, Ed Fabian. @ 402-595-2010

Design Capacity- 90

Average Population 164

Number of Staff 29

Cost Per Inmate Per Year:

\$17,734

ACA ACCREDITED SINCE 1981



Work Ethic Camp-McCook



Raleigh Haas, Warden

Work Ethic Camp (WEC)

2309 N. Hwy 83
McCook, NE 69001
308-345-8405

The program is designed for first-time non violent male and female offenders

Security Levels

Community

Work Ethic Camp's program is based on a 120 to 180 day stay. The offender must be convicted as an adult of a felony offense. They will be sentenced to successfully complete the Work Ethic Camp as a condition of intensive supervision probation.

The Philosophy of the Work Ethic Camp is that behavior and attitude that reflect positive work ethics can be learned and transferred to all areas of an individuals life.

The Offender will perform on and off-site community service work. (for local and area government and non-profit entities). The offenders performance and behavior will be evaluated daily.

Programs including: GED/ABE, substance abuse, education and treatment, Life Skills, and cognitive restructuring are held 7 days a week. Because of the intense programming, for the first 30 days offenders are not allowed visits or phone calls. After 30 days visits and phone calls are limited. Offenders are allowed to possess very few personal items. Cash, televisions, caffeine and C.D. players are not allowed. ALL clothing and hygiene items will be provided. Following their stay at the WEC, the offender will be returned to their community, and probation supervision will continue by the probation staff.

For more information about WEC, contact Public Information Officer,

Kyle Clapp. @ 308-345-8405



Design Capacity - 100

Average Population 70

Number of Staff 70

Cost Per Inmate Per Year

\$21,247

(based on # of admission per year)

ACA ACCREDITED 2004

Programs and Community Services

**Adult Parole Administration
Central Records
Victim Assistance Program
Classification
Corrections Compact
Education
Religious Services (Dual Supervision)
Volunteers
Inmate Transportation & Extradition**



1. Lincoln District Parole Office:

3800 Vermaas, STE 100
Lincoln, NE 68502
(402) 471-1280
FAX: (402) 471-1283

2. Adult Parole Central Office-Lincoln

Folsom and W. Prospector Place
Building 1
(on the Lincoln Regional Center Campus)
P.O. Box 94661
Lincoln, NE 68509-4661
(402) 479-5771
FAX: (402) 479-5804

3. Omaha District Parole Office:

1313 Farnam Street
Omaha, NE 68102-1689
(402) 595-2050
FAX: (402) 595-3874

4. Sottsbuff Report Parole Office:

Panhandle Office Complex
P.O. Box 1500, 4500 Ave. I
Scottsbluff, NE 69363-1500
(308) 632-1283
FAX: (308) 632-1313

5. North Platte Regional Parole Office:

State Office Building
200 South Silber Avenue
North Platte, NE 69101
(308) 535-8115
FAX: (308) 535-8175

6. Grand Island Regional Parole Office:

Tier One Bank Building
1811 West 2nd Street, Suite 225
Grand Island, NE 68803
(308) 385-6230 or (308) 385-6215
FAX: (308) 385-6017

7. Norfolk Regional Parole Office:

Norfolk Regional Center
P.O. Box 1209
1700 North Victory Rd
Norfolk, NE 68702-1209
(402) 370-3136 or (402) 370-3539
FAX: (402) 370-4332

NDCS Programs and Community Services

Adult Parole Administration
P.O. Box 94661 Folsom and W. Prospector Place
Lincoln, Nebraska 68509-4661
James McKenzie, Parole Administrator
Cathy Gibson-Beltz, Assistant Parole Administrator

The Office of Adult Parole Administration was established by an act of legislation in 1969 as a program under the Department of Correctional Services. Adult Parole Administration provides supervision, guidance and assistance to offenders paroled by the Board of Parole as they re-enter the community after a period of incarceration. In 2003 LB 1199 provide that Adult Parole Administration would also provide lifetime supervision of high risk sex offenders released to the community. There are adult parole offices located in Omaha, Lincoln, Norfolk, Grand Island, North Platte and Scottsbluff to provide supervision and surveillance of parolees and sex offenders across the state. Adult parole officers work closely with local law enforcement, community service providers and members of the community to enable paroled offenders and high risk sex offenders to become law-abiding, productive members of society.

Central Records
Ron Riethmuller 402-479-5661

Upon admission to the Nebraska Department of Corrections, the Records Office of the receiving facility (Diagnostic & Evaluation Center for men, the Nebraska Correctional Center for Women or the Nebraska Correctional youth facility)) creates an "institution" inmate file. This file is maintained on active status throughout the entire period of incarceration. Upon discharge, the file is transferred to the Central Records Office for permanent storage and microfilming in compliance with the Department's Records Retention Schedule.

Per Nebraska Revised Statute 83-178, the contents of the inmate file are confidential. However, limited information is a matter of public record and may be released to the public upon request. Public Information concerning inmates is also available through the Department's Web Site:

<http://www.corrections.state.ne.us/>

Along with the "institution" inmate file, a Central Office Inmate file is also created in accordance with Nebraska Revised Statute 83-1,100. This file is similar to the "institution" file maintained by the institution Records Office and is also confidential in accordance with the Statutes cited herein. The Board of Parole and its staff use this file to assist in carrying out the duties of that agency. The Central Office Departmental staff also uses this file to assist them in the routine decision making functions of those positions.

Along with the "hard copy" inmate file, an automated inmate record is maintained on a computerized Correctional Tracking System (CTS). The data maintained on this computerized system also falls under the guidelines of the confidentiality statutes cited above.

Victim Assistance Program
Stena Beltz, Victim Services Coordinator 402-479-5867

The Victim Assistance Program is dedicated to providing support and information to Department employees assaulted by incarcerated or paroled offenders and to their family members. The Mission of the Nebraska Department of Correctional Services is to provide assistance to crime victims of DCS inmates and allow an avenue for victims to participate in department activities. Each institution/program has at least one designated Victim Assistance Representative to serve as a point of contact for all victims.

The Victim Assistance Program recently began instructing Victim Impact Classes for offenders at the Nebraska Correctional Youth Facility and the Omaha Correctional Center. The underlying goal of these classes is to help offenders develop empathy - making them more in tune to the humanistic harm caused when a crime is committed; thereby, reducing the likelihood of them committing future crimes inside and outside of the correctional facility. The heart of this program is having them listen and interact with victims who have been harmed by crime.

NDCS Programs and Community Services

Victim Assistance Program continued

Services provided include:

Crisis intervention throughout the corrections process, including assisting victims with concerns related to inmates and parolees under Nebraska's jurisdiction;
Community education about policies and procedures of the Nebraska Department of Correctional Services;
Assistance preparing for parole hearings;
Referrals to other state and local community services;
Explanation and referral for restitution processing assistance; and
Face-to-face meetings with the offender through Victim Offender Dialogue.

PROGRAMS

Jane Pannkuk 402-479-5723

EDUCATION

With the exception of the Nebraska Correctional Center for Women all educational programming is provided at all institutions through a single contractual service agreement with Metropolitan Community College (MCC). At the Nebraska Correctional Center for Women, Metropolitan Community College provides life skills programs while Department staff provide other educational programs. Instruction is made available to inmates at a time when the majority can take advantage of the programs and, whenever possible, are designed to allow inmates to enter at any time and to proceed at a self-paced rate.

Education services are typically delivered through a Learning Center which is staffed by a facilitator and instructional specialists. Educational staff work together as a team to provide an integrated program of educational offerings and services designed to provide individual inmates those specific educational opportunities most used and relevant to their futures. These options include assessment, literacy instruction, English as a Second Language (ESL), Adult Basic/Education/General Education Development (ABE/GED) and life skills/pre-release courses. In addition to contractual services MCC continues to provide some academic courses through distance learning at no cost to the Department. Offerings are delivered in a variety of formats including traditional classroom lecture/discussion, individualized computer-assisted learning, tele-course instruction, and courses presented via live interactive distance learning television. The Test of Adult Basic Education (TABE) is used to test achievement levels of inmates upon entry into the ABE/GED program, enabling staff to provide appropriate placement, and periodically on an individual basis to assess progress.

In FY2007, 833 inmates were provided programming in ABE/ESL, 804 college credit classes for a total of 2,564 credit hours and 2,908 in life skills courses. In addition, there were 126 GED's earned.

INTERSTATE CORRECTIONS COMPACT

Under the provisions of the Interstate Corrections Compact, the Nebraska Department of Correctional Services has entered into agreements with forty (40) other states.

This provides Nebraska inmates the opportunity to request to serve their Nebraska sentence in one of those states. Reciprocal inmates from other states may then be accepted in return.

Interstate transfers may be approved for a number of reasons, but are generally arranged to enable an inmate to be closer to family and maintain family ties. As of June 30, 2007, there were 23 Nebraska inmates serving their sentences in other states, and 22 inmates from other states serving their sentences in Nebraska.

SELF-BETTERMENT GROUPS

Opportunities for self-betterment are available to inmates, but vary depending upon the institution. Clubs, support groups, and cultural awareness organizations include: Sertoma, Toastmasters, Stamp Club, Veterans, Alcoholics Anonymous, Narcotics Anonymous, 7th Step (a release preparation group), Harambee (African Americans), Mexican Awareness Through Association (MATA), and Native American Spiritual and Cultural Association (NASCA).

NDCS Programs and Community Services

VOLUNTEER SERVICES

Volunteers assist in providing a variety of services to inmates through clubs, education, religious activities, and self-betterment groups. Additionally, a large number of inmates' family members and friends offer their time sponsoring inmates on furloughs and passes into the community.

INMATE CLASSIFICATION

Inmate classification is a system for identifying inmates' needs and characteristics, and matching them with the appropriate physical security, supervision and programming. This is an ongoing process utilizing all available information, and endeavoring to base decisions on objective criteria. The classification system seeks to: assign each inmate to the least restrictive environment appropriate to maintaining public confidence and safety; facilitate the timely movement of inmates through the correctional system; provide for the assignment, continuation, and removal of inmates from Administrative Segregation status; identify inmate needs and recommend program involvement to meet those needs; and assure the most difficult classification decisions are made at the highest level of authority within the Department.

LIBRARY SERVICES

The Department of Corrections maintains eight correctional libraries, which includes the addition of the new law library at the Work Ethic Camp. Library services are available to all inmates and assist in meeting their educational, recreational and therapeutic needs. Inmates may request books and other resources from the interlibrary loan program. Additionally, computer reference centers are available as well as online or CD-Rom based legal resources. The Department of Corrections maintains eight correctional libraries, which includes the addition of the new law library at the Work Ethic Camp.

To ensure compliance, law library services provide inmate access to the courts. Services are available on a daily basis, including evenings and weekends.

Inmate Transportation & Extradition Terry Ewing, Administrator 402-479-5705

The Special Services Unit was established in 1983. At that time primary duties were to return Parole Absconders and Escapees to the institution. Over the years the duties have expanded to include Detainers, Warrants of Arrest, Prisoner Transportation, Inmate Calling System, Teletype Services, Acquisition of Security Equipment, Radio Communication Licensing, and administrative support for the Governor's Office in association with formal extradition proceedings.

TRANSPORTATION

The Transportation Unit employs two Warrant and Extradition Officers who work closely with local, state and federal agencies. Their duties include the return of Escapees, Parole Absconders and Parole Violators, Interstate Transfers of Inmates, Institutional Transfers, Transporting Parolees for Revocation Hearings, Waivers of Extradition, and notification of inmate release dates to agencies who have lodged detainees.

In addition to the Department of Correctional Services duties, the Special Services Unit provides administrative support to the Governor's Office in reviewing and processing Governor's Warrants in the requisition of wanted fugitives.

DETAINERS/WARRANTS/TRIAL REQUESTS

The Special Services Unit supervisor serves as the central administrator acting under the supervision of the department director in implementing the Interstate Agreement on Detainers (IAD). The IAD is a compact comprising of 48 states, the District of Columbia and the United States government. It provides for the administrative transfer of prisoners who are wanted by other states for trial on criminal charges. Within the State of Nebraska, the disposition of untried charges pending in county and local jurisdictions are handled according to procedures similar to those contained in the IAD. The purpose of the IAD and the intrastate Disposition of Untried Charges is to provide a process by which prisoners and prosecutors may initiate steps to resolve outstanding criminal charges upon which detainers are based. Provisions for speedy trials help to alleviate uncertainties that slow programming and rehabilitative opportunities for prisoners within the correctional system.

Reentry Program

NDCS has applied for and received a grant of \$2,070,000 from the U.S. Department of Justice, Office of Justice Programs, to establish a Reentry Program that can be sustained and replicated throughout Nebraska after the grant expires December 31, 2007. The grant stipulates that a specific geographic location be identified in the state as the initial focal point for this initiative. The grant further stipulates that inmates participating be serious and violent offenders who are at high risk to recidivate and between the ages of 19 and 65 years. Utilizing a comprehensive form of case management, NDCS is focusing specifically on issues including substance abuse, mental health, housing, employment, education, mentoring, transportation, criminal thinking, and parenting/family reunification needs. We also partner with community-based service providers including the Health and Human Services System, the Department of Labor, Department of Housing and Urban Development, along with faith-based prison ministries and other social service entities. Successful reintegration of offenders back into society is our objective. NDCS believes that forging a partnership between the community and the correctional system will best serve the interest of all Nebraskans.

Currently, NDCS has served 36 high risk male and female inmates. Of those, seven have been violated while on parole.

INMATE RISK & NEEDS ASSESSMENTS

Currently the Nebraska Department of Correctional Services utilizes four Risk & Needs Assessment instruments.

Institutional	identifies appropriate inmates for the Reentry Program,
Community	provides information to the Parole Board for consideration prior to being placed on parole.
Community re-assessments	provides information to Adult Parole Administration while an inmate is participating on parole.
Aggression / Vulnerable	identifies inmates who may be a risk to other inmates or staff and those inmates who may be at risk from other inmates.

These assessment instruments are valuable in aiding staff in appropriate identification for program and parole participation, institutional security risk and discharge planning.

Institutions

Diagnostic and Evaluation Center

Lincoln Correctional Center

Nebraska Correctional Center for Women

Nebraska Correctional Youth Facility

Nebraska State Penitentiary

Omaha Correctional Center

Tecumseh State Correctional Institution

Diagnostic and Evaluation Center

Diagnostic and Evaluation Center (DEC)

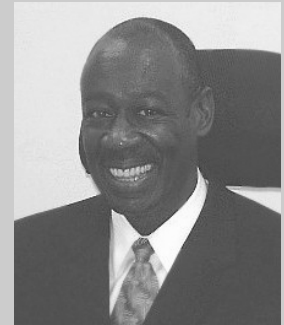
3220 West Van Dorn Street
Lincoln, NE 68522
402-471-3330

Assistant Warden

Charles Rine

Security Levels

Maximum



Mario Peart, Warden

The Diagnostic and Evaluation Center was opened in August of 1979 as a 160-bed, maximum custody, reception, diagnostic, evaluation, assessment, classification and assignment facility.

The single structure, two-story institution consists of nine inmate housing units and an infirmary, which includes eight licensed hospital beds and a fully staffed initial admission clinic. Administrative offices and the infirmary are located on the upper level of the institution. All other inmate housing, programming areas, a gymnasium and custody and case management offices, are located on the lower level.

As provided by State Statute, all adult males sentenced to the Department of Correctional Services by the County and District courts of the State of Nebraska are received into the correctional system at the Diagnostic and Evaluation Center. In addition, the institution houses ninety-day evaluators sentenced by the court for assessment, county safekeepers, interstate transfers, returned parolees and escapees.

Programs: Due to the short length of stay at the institution, there are no industry programs and limited programming.

Each newly admitted inmate, following review of the admission order to ensure legal commitment, begins participation in an intensive medical, psychological and social assessment process. This process culminates in the finalization of an individual classification study and specific programming recommendations to the Classification Officer relative to custody status and institutional placement. Varied program services are offered and encouraged through recreation and library programs. The maintenance of family and community ties is encouraged through the visitation, mail and telephone programs. Religious programming is also available to the inmate population. Other opportunities including Alcoholics Anonymous, and a Pre-Release program are available for inmate participation. The Diagnostic and Evaluation Center has been a part of Nebraska Correctional Services since 1979.

For information about DEC, contact the Public Information Officer, Tammy Kluver @ 479-6343 or tkluver@dcs.state.ne.us.

Design Capacity - 160

Average Population 354

Number of Staff 139.5

Cost Per Inmate Per Year:

\$30,067

ACA ACCREDITED SINCE 1984



Lincoln Correctional Center



Diane Sabatka-Rine, Warden

Lincoln Correctional Center (LCC)

3216 West Van Dorn St
Lincoln, NE 68522
402-471-2861

Deputy Warden

Robert Madsen

Associate Warden

Denise Skrobecki

Security Levels

Maximum, Medium

The Nebraska Department of Correctional Services' Lincoln Correction Center, located in the capital city of Lincoln, is a medium/maximum security facility for adult male offenders. Originally opened as part of the adjacent maximum security Diagnostic and Evaluation center in 1979, the two units were separated into two distinct facilities in 1993. Due to their close proximity, the Diagnostic and Evaluation Center continues to provide after hours medical coverage for Lincoln Correction Center.

Lincoln Correction Center provides care, custody and programming services to a variety of primarily younger, first time inmates. Each housing unit is unique. One complete unit serves the socially and developmentally impaired inmates and contains an inpatient program for sex offenders. Two units are designed as segregation units. Three-quarters of one unit is designed to house inmates who have been classified to protective custody status. The remaining housing units house general population inmates. All inmates are provided the opportunity to become involved in academic programs. All general population inmates may participate in academic, institutional maintenance and work programs.

Structure, philosophy and dedicated personnel facilitate cooperation between security staff and other departments. The institution provides a unit management program approach that is responsive to the needs of the inmate population while maintaining a secure environment. Inmate supervision is a responsibility shared by staff at all levels in all departments.

For information about LCC contact Public Information Officer @ 402-479-6175



Design Capacity- 308

Average Population 492

Number of Staff 239

Cost Per Inmate Per Year:

\$36,385

ACA ACCREDITED SINCE 1984

Nebraska Correctional Center for Women

Nebraska Correctional Center for Women (NCCW)

1107 RECHARGE ROAD
YORK, NE 68467
402-362-3317

Assistant Warden

Tim Siemek

Security Levels

Maximum, Medium, Minimum



John Dahm, Warden

The Nebraska Correctional Center for Women is the only secure state correctional institution for adult women. NCCW began operation in 1920 as the "State Reformatory for Women". The original facility consisted of a two-story house used as an inmate and staff residence. The institution was a working dairy farm. The current institution consists of 17 buildings on 27 acres of land secured by two security fences. A 12.5 million dollar addition to the facility was opened in October 2004. The original house, known as the Cottage is still being used today as a learning center for the Living Skills Program. NCCW is the Diagnostic and Evaluation center for all females committed to the State Department of Corrections.

Parenting Program: Started in 1974, the Parenting Program at NCCW was the first of its kind in the United States, allowing over-night visits for children.

In 1994, NCCW implemented another cutting edge mother/child program, a Nursery modeled after the Bedford Hills Correctional Center in New York, the Nursery Program allows mothers to keep their infant child with them on grounds for up to 18 months, with the goal of having mother and child leave together.

Both parenting programs include classes and workshops on parenting skills, prenatal care, child development, child health and safety, and improving relationships. Inmates who participate in the Parenting Programs must meet all NCCW eligibility requirements prior to visits or admittance into the Nursery Program.

Programs: In-Patient Substance Abuse Program, Out-Patient Substance Abuse, Outpatient Mental Health Programs, General Education (has a state accredited ABE program), and Prison Industries Employment, college level classes. The Nebraska Correctional Center for Women has been a part of Nebraska Correctional Services since 1920 beginning as the state Reformatory for Women.

For more information about NCCW contact the Public Information Officer, Tim Siemek @ 402-362-3317 ext. 226 or email tsiemek@dcs.state.ne.us

Design Capacity - 275

Average Population 318

Number of Staff 122.5

Cost Per Inmate Per Year:

\$31,476

ACA ACCREDITED SINCE 1981



Nebraska Correctional Youth Facility



Cathy Waller-Borovac, Wadenden

Nebraska Correctional Youth Facility (NCYF)

2610 North 20th Street, East
Omaha, Nebraska 68110
402-595-2000

Assistant Warden

Trish Brockman

Security Levels

Maximum, Medium, Minimum

The Nebraska Correctional Youth Facility (NCYF) came into existence in 1994 with Legislative Bill 988, which created the Office of Juvenile Services and established the requirement to plan for the construction of a Secure Youth Confinement Facility. Subsequently, the facility was transferred to the Nebraska Department of Correctional Services. The NCYF received its first inmates in August 1998. NCYF serves as the reception center for youthful male inmates who are 18 years of age and under with the Nebraska Department of Correctional Services. NCYF houses inmates from early adolescence to age 21 years 10 months. The inmates are introduced to NCYF through its Orientation Program. This 30-day program consists of a functional overview of each department prior to initial classification and appropriate placement to general population. Unit Management, Custody, Mental Health, Substance Abuse and Education focus on the team approach to coordinate programming at NCYF. NCYF inmates experience a highly structured facility that emphasizes the ability to transition back into society. Volunteers from the community provide invaluable support for continuation and expansion of the various programs at NCYF.

Programs:

ABE/GED/Basic Literacy; college courses; English as a Second Language; Pre-Release; Parenting Skills; Work Attitudes and Behaviors; Substance Abuse Treatment/ Out-Patient Programming to include Individual Counseling, Alcohol and Drug Education/ Prevention, 12-Step, and Relapse Prevention; Mental Health Programming for Socially and Developmentally Impaired Inmates, to include individual counseling services, group psychotherapy services, Anger Management, Victim Impact Class, Cognitive Thinking; and vocational programs such as Food Service, Project Greenthumb, and Project H.E.A.R.T. (Humane Education for At Risk Teens), a joint program between the Nebraska Correctional Youth Facility and the Nebraska Humane Society.

For more information on NCYF Contact the Public Information Officer,
Jim Sweredoski @ 402-595-.2000



Design Capacity- 68

Average Population 94

Number of Staff 77.75

Cost Per Inmate Per Year:

\$54,822

ACA ACCREDITED SINCE 2000.

Nebraska State Penitentiary

Nebraska State Penitentiary (NSP)

4201 South 14th Street
Lincoln, NE 68522
402-471-3161



Dennis Bakewell, Warden

Deputy Warden

Richard Cruickshank

Associate Warden

Joel Staley

Associate Warden

Cathy Sheair

Security Levels

Maximum, Medium, Minimum

The Nebraska State Penitentiary located in Lincoln is the oldest state correctional facility in Nebraska, opening in 1869. Until after World War I, it was the only adult correctional facility in the state.

During 1980-1981, the existing cellblocks constructed during the second half of the 19th century were replaced by four (later five) modular housing units. A new administrative complex and an EPA approved multi-fuel power plant were also completed at the same time. An existing dormitory building constructed in the 1950's was retained as a medium security facility and a portion currently houses the Residential Treatment Community for substance abuse offenders. Two new 100 bed dormitory units were opened in 1998. A thirty-six-bed control unit also built in the 1950's continues in use as a high security segregation facility. The Industries Plant, Laundry and other support buildings were retained from the older facility as well.

The inmate population at the NSP typically consists of 21 years of age and older inmates serving medium to longer sentences.

The Nebraska State Penitentiary uses the Unit Management concept designed to improve control and staff/inmate relationships by dividing the larger institution population into smaller, more manageable groups and to improve and personalize the delivery of rehabilitative services.

NSP is the site of major components of the Agency's Cornhusker State Industries (CSI) program.

Programs: NSP offers a variety of education/rehabilitation programs designed to enhance an inmate's chances for successful community adjustment upon release. These include Educational/Life Skills and Vocational Programs, Self-Improvement (Residential and Outpatient Substance Abuse Treatment, Religious Programming and Self-Betterment Activities), and Support Services. The Nebraska State Penitentiary has been a part of Nebraska Correctional Services since 1869.

For more information about NSP Contact ,Public Information Officer, Winfield Barber @ 402-479-3227 or email wbarber@dcs.state.ne.us

Design capacity 718

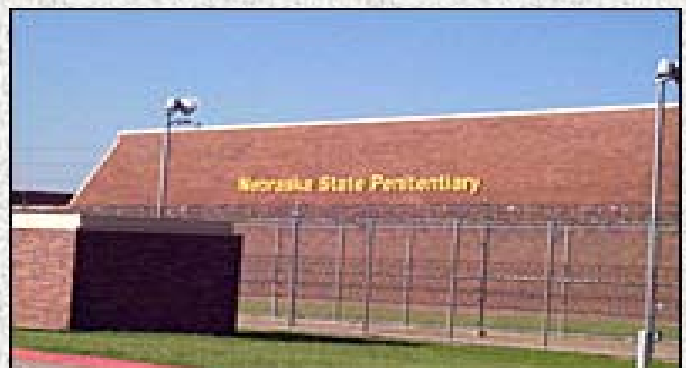
Average Population 1,140

Number of Staff 464

Cost Per Inmate Per Year:

\$31,036

ACA ACCREDITED SINCE 1985



Omaha Correctional Center



Karen Shortridge , Warden

Omaha Correctional Center (OCC)

2323 AVENUE J
OMAHA, NEBRASKA 68110
402-595-3964

Deputy Warden
Charlie West

Associate Warden
Ken Schmit

Security Levels
Medium, Minimum

The Omaha Correctional Center (OCC) is a medium/minimum security facility located on a 37-acre site in East Omaha, just south of Eppley Airfield. OCC was opened April 24, 1984, at a total cost of approximately \$17 million. The facility has current population of approximately 600 adult male inmates.

The center has a separate entrance/Administration building as well as an inner complex including four housing units, an indoor/outdoor visiting area, library, chapel, dental and medical area, segregation unit, academic and pre-employment training areas, central physical plant, laundry, kitchen and dining room, Cornhusker State Industries, a canteen and gymnasium.

PROGRAMS

Mental Health Counseling, Academic Education, Substance Abuse Counseling, to include inpatient and outpatient programs, Alcoholics Anonymous, self betterment clubs, Alternatives to Violence Program (AVP), volunteer activities, pre-release programs, the re-entry initiative, English as a Second Language (ESL), work programs to include traditional facility work programs, outside work details, Cornhusker State Industries and the Canine Program.

The Omaha Correctional Center has been a part of Nebraska Correctional Services since 1984.

For more information about OCC Contact Public Information Officer,
Ron Limbeck @ 402-595-3963



Design capacity- 396
Average Population 595
Number of Staff 179
Cost Per Inmate Per Year:
\$26,421

ACA ACCREDITED SINCE 1986

Tecumseh State Correctional Institution

Tecumseh State Correctional Institution (TSCI)

2725 North Highway 50
Tecumseh, NE 68450
402-335-5998



Fred Britten, Warden

Deputy Warden

Brian Gage

Associate Warden

Dominic Witherspoon

Security Levels

Death Row, Intensive Management

Maximum, Medium, and Minimum B

The Tecumseh State Correctional Institution (TSCI) was established by LB 150 in 1997 and is the only Nebraska Maximum/Medium Custody, adult male facility in a rural setting.

All inmates at the Tecumseh State Correctional Institution are males adjudicated as adults and classified as medium or maximum custody. (Approximately 30 Minimum Custody inmates are housed at TSCI for outside grounds, administration building and warehouse jobs.) The institution has a design capacity for 960 inmates, which includes 768 general population beds and a 192-bed special management unit for Administrative Segregation, Disciplinary Segregation and Intensive Management inmates. Death Row inmates will be housed at TSCI but the death penalty will continue to be administered at the Nebraska State Penitentiary in Lincoln.

TSCI has been a part of Nebraska Correctional Services since 2000.

For more information about TSCI Contact Public Information Officer,
Dawn-Renee Smith @ 402-335-5113

Design capacity- 960
Average Population 859
Number of Staff 432
Cost Per Inmate Per Year:
\$34,463
ACA Accredited Since 2003



Programming and Services

Provided by NDCS Facilities

Behavioral Health

Education

Health Services

NDCS Institutional Programs and Services

Mental Health Programming/Services

NDCS is currently in the process of re-structuring the types of mental health services that are offered with an emphasis on providing a full range of services (from assessment to discharge planning) to inmates with major mental illness and providing specialized treatment for sex offenders and high-risk inmates. Two specialized units at the Lincoln Correctional Center provide services to the mentally ill inmates and sex offenders. Both of these programs are therapeutic communities. Mental health also offers programming to the segregation control units at NSP, LCC, and TSCI using behavior modification principles. Other services that are offered include crisis intervention, mental health monitoring, and criminal thinking treatment. Mental health also conducts psychological evaluations and provides psychiatric services. The expenditures for mental health programming in FY 2005-2006 were \$2,675,381.

Substance Abuse Services

NDCS provides for primary substance abuse services to the offender population. These include assessment/evaluation services, non-residential services, residential services and provide a substance abuse discharge summary for inmates who are paroling or discharging to a community agency for continued care. The Department maintains 234 residential treatment beds at 4 separate facilities. Inmates assigned to these programs have been identified as having serious substance abuse issues in conjunction with criminal activity. The programs generally last 10 months. Waiting lists for offenders who need this programming are generally prioritized in line with tentative release date or parole planning. The non-residential treatment component generally takes up to 6 months to complete. It is reserved for offenders who are otherwise not eligible for treatment in the residential programs. DCS maintains 625 available treatment slots throughout the agency. Due to a higher turnover of participants and less time to complete the programs, waiting lists are generally less problematic for non-residential treatment. The expenditures for substance abuse programming in FY 2005-2006 were \$1,986,005 (General Fund only). Mental Health programming is voluntary; inmates have the right to refuse mental health care.

Residential Programs

The Mental Health and Socially & Developmentally Impaired programs are combined in a structured therapeutic community designed to provide services to inmates with chronic mental health issues, developmental disabilities and/or social deficits, who may have demonstrated difficulty adjusting to incarceration. Program goals may include learning to understand and manage mental illness, criminal thinking/behavior, and improving coping and/or social skills, with the goal of integration into the general prison population.

The Sex Offender program provides intensive treatment to inmates who acknowledge their history of sexually assaultive behavior. Inmates are challenged to learn and understand their sexual assault cycle, control their assaultive behavior, learn the effect of their assaultive behavior on victims, develop victim empathy, and address other factors that have impacted their assaultive behavior.

GOLF Program

The GOLF treatment program encourages inmates to identify and change basic components of their antisocial thinking and behavior. The identification stage progresses to consideration of corrective strategies as Inmates earn promotion through the four levels. Self-monitoring skills and intervention strategies are considered to be basic and "generic" to treatment of the various behavioral disorders. Groups in Levels I, II, and III each have twelve sessions; whereas level IV groups are ongoing and intended for inmates who continue to demonstrate a desire to learn and implement concepts of the program.

Psychiatric Care / Psychological Evaluations

All of the institutions are served by either the Staff Psychiatrist or a consulting psychiatrist who can prescribe and manage psychiatric medications. Information will automatically be forwarded to the Medical and Mental Health Departments for Inmates who arrive at the institution on psychiatric medications and appointments will be scheduled. It is the inmate's responsibility to attend all psychiatric appointments, or medication may be discontinued. The OCC does not provide intensive psychiatric medication management, and inmates who require frequent psychiatric contact will be transferred from the respective institution. Psychological evaluations are not available upon inmate request, but are scheduled only upon appropriate Unit staff and/or Parole Board referral.

NDCS Institutions

Mental Health Programming Available by Institution

CCC-L

Non-Residential

- Follow-up psychiatric consultation
- Emergencies/Crisis intervention
- Psychoeducation
- Access to community mental health services

CCC-O

Non-Residential

- Follow-up psychiatric consultation
- Emergencies/Crisis intervention
- Psychoeducation
- Access to community mental health services

DEC

Non-Residential

- Intake screening/assessment
- Psychiatric consultation
- Emergencies/Crisis intervention
- Psychoeducation

LCC

Residential

- Sex Offender program – 44 beds
- Mental Health and Developmentally & Socially Impaired programs 38 beds

Non-Residential

- Generic Outpatient Levels Format [GOLF] group program
- Psychiatric consultation
- Control Unit Incentive Program [CUP]
- C-Unit Segregation Incentive Program
- Emergencies/Crisis intervention
- Psychoeducation

NCCW

Non-Residential

- Generic Outpatient Levels Format [GOLF] group program
 - Adjunct groups, e.g., anger management, domestic violence, human sexuality
- Psychiatric consultation
- Emergencies/Crisis intervention
- Psychoeducation

NCYF*

Non-Residential

- Generic Outpatient Levels Format [GOLF] group program
 - Adjunct groups, e.g., anger management, domestic violence, human sexuality
- Psychiatric consultation
- Emergencies/Crisis intervention
- Psychoeducation

*The Nebraska Correctional Youth Facility is unique in that each inmate is assigned a Mental Health counselor when they enter the institution.

Mental Health Programming Available by Institution

NSP

NON-RESIDENTIAL

GENERIC OUTPATIENT LEVELS FORMAT [GOLF] GROUP PROGRAM
 PSYCHIATRIC CONSULTATION
 CONTROL UNIT INCENTIVE PROGRAM [CUP]
 CRISIS INTERVENTION
 PSYCHOEDUCATION

OCC

NON-RESIDENTIAL

GENERIC OUTPATIENT LEVELS FORMAT [GOLF] GROUP PROGRAM
 BASIC PSYCHIATRIC CONSULTATION
 CRISIS INTERVENTION
 PSYCHOEDUCATION

TSCI

NON-RESIDENTIAL

GENERIC OUTPATIENT LEVELS FORMAT [GOLF] GROUP PROGRAM – 3-LEVELS,
 PSYCHIATRIC CONSULTATION
 SPECIAL MANAGEMENT UNIT INCENTIVE PROGRAM [SMUP]
 CRISIS INTERVENTION
 PSYCHOEDUCATION

WEC

CONTRACT PSYCHIATRIC NURSE

SUBSTANCE ABUSE PROGRAMMING

<u>LOCATION</u>	<u>LEVEL OF CARE</u>	<u>LEVEL OF SERVICE</u>
CCC-L:	NON-RESIDENTIAL	EDUCATION OUTPATIENT AFTERCARE
CCC-O:	NON-RESIDENTIAL	EDUCATION OUTPATIENT AFTERCARE
DEC: EDUCATION	SCREENING/ASSESSMENT	
LCC:	NON-RESIDENTIAL	EDUCATION INTENSIVE OUTPATIENT AFTERCARE

NDCS Institutional Programs and Services

Mental Health Programming Available by Institution

NCCW: SCREENING/ASSESSMENT

NON-RESIDENTIAL INTENSIVE OUTPATIENT
AFTERCARE

RESIDENTIAL

SUBSTANCE ABUSE UNIT (10 MONTHS) 28 BEDS MULTI-CUSTODY INMATES
PAROLE VIOLATOR PROGRAM (90-120 DAYS INTENSIVE) MIN MUM CUSTODY INMATES

NCYF:

SCREENING/ASSESSMENT

NON-RESIDENTIAL EDUCATION
INTENSIVE OUTPATIENT
AFTERCARE

NSP:

NON-RESIDENTIAL EDUCATION
INTENSIVE OUTPATIENT
AFTERCARE

RESIDENTIAL

RESIDENTIAL TREATMENT COMMUNITY (10 MONTHS) 100 BEDS MIN MUM CUSTODY INMATES
PAROLE VIOLATOR PROGRAM (90-120 DAYS INTENSIVE) UP TO 10 BEDS MIN MUM CUSTODY INMATES

OCC:

NON-RESIDENTIAL EDUCATION
INTENSIVE OUTPATIENT
AFTERCARE

RESIDENTIAL

SUBSTANCE ABUSE UNIT (10 MONTHS) 72 BEDS MIN MUM CUSTODY INMATES

TSCI:

NON-RESIDENTIAL EDUCATION
INTENSIVE OUTPATIENT
AFTERCARE

RESIDENTIAL

SUBSTANCE ABUSE UNIT (10 MONTHS) 32 BEDS MED/MAX CUSTODY INMATES

WEC:

NON-RESIDENTIAL EDUCATION
INTENSIVE OUTPATIENT

Educational Programming

Educational programming offered to NDCS offenders includes English as a Second Language, Adult Basic Education/General Equivalency Diploma, Nebraska cognitive thinking, work attitudes and behavior, parenting (toddlers & teens), Native American studies, pre-release, financial planning, economics, Relationships I, II, & III, and computer keyboarding. Although not State funded, there are some college credit classes offered via distance learning throughout all NDCS institutions. NDCS is able to meet the needs of all offenders seeking adult basic education and GED programming.

NDCS Institutional Programs and Services

Educational Programming

At the Nebraska Correctional Center for Youth (NCYF), youthful offenders adjudicated as adults are assigned to an educational program within 72 hours of reception. Waiting lists for offenders seeking ABE or GED programming are present at each institution. NDCS also experiences significant waiting lists for inmates seeking pre-release and cognitive thinking instruction. These waiting lists vary in length from 40 to 60 offenders at the other adult facilities (not including NCYF). The expenditures for education in FY 2005-2006 were \$1,411,208.

Metropolitan Community College offers educational programming at each correctional site based on the specific needs of the population and availability of space at that site.

The general rule for teacher/student ratio is one teacher for every fifteen students. The exception to that rule is NCYF, where the teacher/student ratio is one teacher for every ten students as requested by the administrative staff at that correctional site. Most sites offer Work Attitudes, Cognitive Thinking, Parenting, Life Skills, General Education, Adult Basic Education, and English as a second language. Most College class size is limited to five students per individual college class per site.

OMAHA CORRECTIONAL CENTER – (OCC)

ESL, ABE/GED, Nebraska Cognitive Thinking, Work Attitudes & Behavior, Parenting NOW, Parenting-Toddlers, Parenting-Teens, Native American Studies, Pre-Release and College Credit Classes.

COMMUNITY CORRECTIONAL CENTER – OMAHA – (CCC-O)

ABE/GED

NEBRASKA CORRECTIONAL YOUTH FACILITY - (NCYF)

ESL, ABE/GED, Nebraska Cognitive Thinking, Work Attitudes & Behavior, Parenting NOW, Parenting-Toddlers, Parenting-Teens, Financial Planning, Psychology, Victim Impact, Economics, Pre-Release and College Credit Classes.

All inmates at this correctional site are required to attend school three hours per day Monday through Friday

TECUMSEH STATE CORRECTIONAL INSTITUTION - (TSCI)

ESL, ABE/GED, Nebraska Cognitive Thinking, Work Attitudes & Behavior, Parenting NOW, Parenting-Toddlers, Parenting-Teens, Native American Studies, Pre-Release, and College Credit Classes.

LINCOLN CORRECTIONAL CENTER - LINCOLN (LCC)

ESL, ABE/GED, Nebraska Cognitive Thinking, Work Attitudes & Behavior, Parenting NOW, Parenting-Toddlers, Parenting-Teens, Native American Studies, Pre-Release and College Credit Classes.

COMMUNITY CORRECTIONAL CENTER - LINCOLN (CCC-L)

ABE/GED

NEBRASKA STATE PENITENTIARY - (NSP)

ESL, ABE/GED, Nebraska Cognitive Thinking, Work Attitudes & Behavior, Parenting NOW, Parenting-Toddlers, Parenting-Teens, Native American Studies, Pre-Release and College Credit Classes.

RESIDENTIAL TREATMENT CENTER - (RTC)

ABE/GED, Parenting NOW, Parenting-Toddlers and Parenting-Teens.

NDCS Institutional Programs and Services

NEBRASKA CORRECTIONAL CENTER FOR WOMEN - (NCCW)

Nebraska Cognitive Thinking, Relationships I, II, III, Computer Keyboarding, Pre-Release, and College Credit Classes.

WORK ETHIC CAMP – McCOOK - (WEC)

ESL, ABE/GED, Parenting NOW, Parenting-Toddlers and Parenting-Teens.

Educational Programming Legend:

ESL-English as Second Language

ABE/GED-Adult basic Education

CCC-L-Community Corrections Center-Lincoln

CCC-O-Community Corrections Center-Omaha

NSP-Nebraska State Penitentiary

RTC- Men's Residential Treatment Center located at the Nebraska State Penitentiary

LCC-Lincoln Correctional Center

DEC-Diagnostic and Evaluation Center

WEC-Work Ethic Camp

OCC-Omaha Correctional Center

NCYF-Nebraska Correctional Youth Facility

NCCW-Nebraska Correctional Center for Women

TSCI-Tecumseh State Correctional Institution

Programs and Services Under Supervision of Deputy Director of Institutions

RELIGIOUS SERVICES

Joe Baldassano 402-479-5730

The Department provides opportunities for inmates to practice their religious faith. Maintaining impartiality, consistency and equality for time, space, and resources among all recognized faith groups is a prime consideration. Each institution assigns a person to coordinate religious activities. Guidance for the implementation of the agency religious program is obtained through the Religion Study Committee (RSC). The assistant to the Deputy Director for institutions is the coordinator for the agency's religious program at the Central Office level, and co-chairs the Religion Study Committee. The Religion Study Committee membership is comprised of the facility religious coordinators and a legal Representative.

INTERPRETATION/TRANSLATION SERVICES

Robert Madsen 402-471-2861

In 1998, LB 389 appropriated funding to the Department of Correctional Services for four full-time interpreters. Four Spanish and English speaking interpreters were hired to help facilitate oral and written interpretation and translation services to inmates, inmate families and the community regarding matters relative to the Department of Correctional Services. These staff are assigned by geographic area and travel to each DCS institution/program as needed. The Department's interpreters also make arrangements with community resources, for interpretation and translation services for languages other than Spanish and English.

EMERGENCY PREPAREDNESS

Brad Hansen 402-479-5617

Emergency Preparedness is a comprehensive system that requires a continuous commitment to personnel and resources to ensure a systematic approach to responding to emergencies. Key to the success of the Emergency Preparedness Program are the full time staff at the Department level as well as the facility level that ensure the Department's readiness to respond through emergency policy, planning, training, check lists and exercises. Essential to the success of a response to a facility emergency are the specially trained teams. The teams consist of two Department wide teams—Special Operations Response Team (SORT) and the Crisis Negotiation Team (CNT) and the institutional based Correctional Emergency Response Team (CERT).

INVESTIGATIONS

Brad Hansen 402-479-5617

The Department Investigation program is committed to the investigation and prosecution of all criminal activity by either staff or inmates. The Department has two full time investigators that are law enforcement certified and have the power to arrest and detain. The Department Investigators work closely with the facility staff in developing information and they also work closely with outside agencies, i.e., the Nebraska State Patrol, local law enforcement and County Attorneys.

DRUG INTERDICTION

Brad Hansen 402-479-5617

The Department has a zero tolerance policy on the use of drugs by inmates and staff. The Drug Interdiction program works toward that goal by employing a multi-faceted approach. The program consists of information gathering and sharing, telephone monitoring, random and targeted urinalysis testing on staff and inmates, ION Mobility Spectrometry searches of visitors, staff and inmates, K-9 searches and the Drug Offender Classification Program. Note that the Planning and Research division keeps information and data regarding the Department's drug interdiction efforts. Additionally, that section coordinates with lab personnel and generates the lists of inmates to be tested. Please refer to the section in the Annual Report under Drug Testing/Drug Intelligence for further information.

Programs and Services Under Supervision of Deputy Director of Institutions

LEISURE TIME ACTIVITIES

Frank X. Hopkins 402-479-5733

Leisure time activities provide an avenue for self-development by inmates as well as helping create a humane environment. It allows inmates to pursue individual hobbies and develop individual talents. Each institution has qualified staff to supervise recreation activities. These include exercise, athletics, games, music, painting, writing, and handcrafts.

NDCS SECURITY MANUAL

Helen M. Torres 402-479-5607

The Department's Security Manual contains procedures for institution security and control, with detailed instructions for implementing these procedures. The Department Security Administrators as well as the Department Emergency Management Supervisor, the Planning, Research and Accreditation Manager, the Deputy Directors and the Director review all Security Manual Chapters and Audit Instruments annually. The office of the Deputy Director – Institutions is responsible for updating and maintaining the Security Manual. Additionally, the office of the Deputy Director – Institutions works with the Security Administrators in reviewing the Department's policy directives in order to determine whether immediate revisions to the Security Manual are required. Security Audit Teams conduct security audits of each facility on an annual basis. Along with security audits, security procedure assessments are conducted at each NDCS facility three to four times per year. The office of the Deputy Director – Institutions is responsible for reviewing audit and procedure assessment reports and following up as necessary. Additionally, this office maintains records of security audits and procedure assessments conducted by the Department.

Statistical Summary

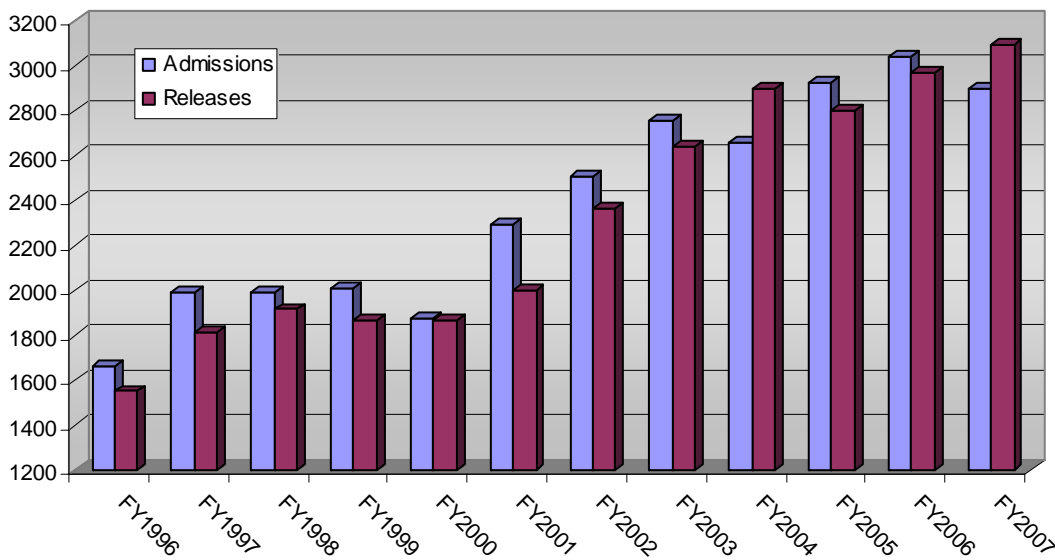
NDCS Admissions and Releases

Total Admissions

FY	New Sentenced			Revocations			Evaluator/Safekeeper/WEC			Grand Total
	Males	Females	Total	Males	Females	Total	Males	Females	Total	
1997	1346	170	1516	314	36	350	109	14	123	1989
1998	1371	159	1530	292	44	336	108	21	129	1995
1999	1456	178	1634	222	22	244	113	16	129	2007
2000	1303	134	1437	243	27	270	140	27	167	1874
2001	1607	220	1827	199	22	221	196	47	243	2291
2002	1614	246	1860	212	17	229	331	85	416	2505
2003	1676	239	1915	199	23	222	467	149	616	2753
2004	1698	243	1941	223	30	253	384	84	468	2662
2005	1774	309	2083	307	33	340	403	98	501	2924
2006	1992	336	2328	250	33	283	338	90	428	3039
2007	1871	308	2179	226	35	261	374	88	462	2902

Total Releases

FY	Paroled To Nebraska			Discharges			Evaluator/Safekeeper/WEC			Grand Total
	Males	Females	Total	Males	Females	Total	Males	Females	Total	
1996	532	78	610	758	62	820	110	10	120	1550
1997	647	120	767	850	78	928	95	20	115	1810
1998	679	109	788	905	86	991	119	17	136	1915
1999	593	85	678	940	100	1040	129	18	147	1865
2000	563	103	666	961	91	1052	128	22	150	1868
2001	642	80	722	1090	83	1173	172	48	220	2003
2002	665	107	772	1109	126	1235	281	77	358	2365
2003	626	111	737	1194	153	1347	430	129	559	2643
2004	1015	152	1167	1080	134	1214	419	102	521	2902
2005	953	133	1086	1079	150	1229	396	89	485	2800
2006	873	161	1034	1265	226	1491	353	91	444	2969
2007	1007	174	1181	1251	189	1440	374	97	471	3092



Average Monthly Population Fiscal Year

Facility	1997	1998	1999	2000	2001	2002	2003	2004	2005	2006	2007
Nebraska State Penitentiary	924	978	1122	1191	1193	1198	1014	1091	1149	1163	1140
Lincoln Correctional Center	507	513	516	507	522	511	452	462	481	493	492
Diagnostic & Evaluation Unit	357	324	308	276	392	394	366	299	281	390	354
Omaha Correctional Center	642	691	700	678	697	713	645	580	588	562	595
Hastings Correctional Center#	172	180	180	180	181	173					
Community Corrections	334	381	394	387	387	385	404	428	425	491	547
NE Correctional Treatment Center**	87	89	89	87	88	86					
NE Correctional Youth Facility +			48	63	64	74	71	66	78	97	94
Nebraska Center for Women	160	168	198	192	225	273	274	254	281	311	318
Tecumseh State Correctional Institution ^						296	794	849	801	853	858
Total Average Monthly Population	3231	3337	3548	3561	3747	3838	4037	4029	4086	4360	4398
% Change	+7.1%	+3.3%	+6.3%	+0.4%	+5.2%	+2.4%	+5.2%	-0.2%	+1.0%	+6.7%	+0.9%
Work Ethic Camp~					18	48	77	85	75	75	70
Adult Parole	619	605	587	566	505	560	624	695	767	710	754
Hastings Correctional Center BICE Holding Center#							134	128			
Total	3857	3952	4142	4127	4271	4446	4871	4938	4928	5145	5222
% Change	+6.4%	+2.5%	+4.8%	-0.4%	+3.5%	+4.1%	+9.6%	+2.3%	-0.2%	+4.4%	+1.5%

**The Nebraska Correctional Treatment Center opened in August 1994, closed June 2002.

+ The Nebraska Correctional Youth Facility opened in August, 1998

~ The Work Ethic Camp opened in April, 2001.

^ Tecumseh State Correctional Institution opened December, 2001.

Hastings Correctional Center became a BICE Holding Center as of June 2002, closed June 2004.

Adult Female Total Population - FY2007 Statistical Reports

Current Age

Age	Number	Percent	Cumulative Number	Cumulative Percent
18	1	0.2%	1	0.2%
19	2	0.5%	3	0.7%
20 - 24	47	11.4%	50	12.1%
25 - 29	77	18.6%	127	30.7%
30 - 34	77	18.6%	204	49.3%
35 - 39	72	17.4%	276	66.7%
40 - 44	66	15.9%	342	82.6%
45 - 49	47	11.4%	389	94.0%
50 - 54	17	4.1%	406	98.1%
55 - 59	4	1.0%	410	99.0%
60 and Over	4	1.0%	414	100.0%

Average Age

Current Age	# of Inmates
34.04	414

Race

Race	Number	Percent
White	280	67.6%
Black	68	16.4%
Native American	31	7.5%
Hispanic	24	5.8%
Other	9	2.2%
Asian	2	0.5%
Grand Total	414	100.0%

Commitment Area

Region	Number	Percent
Metro Omaha	145	35.0%
Metro Lincoln	72	17.4%
Southeast	38	9.2%
Northeast	68	16.4%
South Central	51	12.3%
North Central	4	1.0%
Panhandle	30	7.2%
Out of State	3	0.7%
Data Unavailable	3	0.7%
Grand Total	414	100.0%

Current Custody

Custody	Number	Percent	Cumulative Number	Cumulative Percent
MAX-Restricted	64	15.5%	64	15.5%
MED-Restricted	92	22.2%	156	37.7%
MIN-Dir Con Supr	145	35.0%	301	72.7%
MIN-Intrmt Supr	5	1.2%	306	73.9%
COMM-Detail	83	20.0%	389	94.0%
COMM-Wrk / Ed Ris	25	6.0%	414	100.0%

Record Center

Record Center	Number	Percent
NCW	317	76.6%
CCL	78	18.8%
CCO	19	4.6%
Grand Total	414	100.0%

Admission Type

Admission Type	Number	Percent
First-Time	306	73.9%
Multiple	95	22.9%
County Safekeeper	4	1.0%
Interstate Trans	4	1.0%
Evaluator	3	0.7%
Unavailable	2	0.5%
Grand Total	414	100.0%

Jurisdiction

Jurisdiction	Number	Percent
Nebraska	410	99.0%
Interstate Transfer	4	1.0%
Grand Total	414	100.0%

Adult Female Total Population - FY2007 Statistical Reports

Previous Parole

Parole	Number	Percent
NO	404	97.6%
YES	10	2.4%
Grand Total	414	100.0%

Marital Status

Marital Status	Number	Percent
SINGLE	190	45.9%
MARRIED	104	25.1%
DIVORCED	91	22.0%
SEPARATED	13	3.1%
DATA UNAVAILABLE	9	2.2%
WIDOWED	6	1.4%
COMMON LAW	1	0.2%
Grand Total	414	100.0%

Religion

Religion	Number	Percent
CATHOLIC	92	22.2%
NONE	87	21.0%
CHRISTIAN	79	19.1%
BAPTIST	47	11.4%
LUTHERAN	34	8.2%
METHODIST	12	2.9%
PROTESTANT	12	2.9%
PENTECOSTAL	8	1.9%
WICCAN	7	1.7%
PRESBYTERIAN	6	1.4%
NATIVE AMERICAN	5	1.2%
ISLAM/MUSLIM	4	1.0%
SEVENTH DAY ADVENT	3	0.7%
EPISCOPAL	2	0.5%
MUSLIM/ISLAM	2	0.5%
WICCA	2	0.5%
AME	1	0.2%
BUDDHIST	1	0.2%
CHURCH OF GOD	1	0.2%
JEHOVAHS WITNESS	1	0.2%
MORMON/LDS	1	0.2%
PAGAN	1	0.2%
Unknown	6	1.4%
Grand Total	414	100.0%

Avg Min & Max Sentence

(Life set to 10-year average of 17.51 Yrs)

Avg MIN Sentence Mo's	Avg MAX Sentence Mo's	# of Inmates
58.78	101.98	414

Average Length of Stay

Years	Months	Days	# of Inmates
2.74	32.91	1001	414

Length of Stay in Institution

Month/Year	Number	Percent	Cumulative Number	Cumulative Percent
7 - 12 Months	25	6.0%	25	6.0%
13 - 18 Months	134	32.4%	159	38.4%
19 - 24 Months	80	19.3%	239	57.7%
25 - 30 Months	23	5.6%	262	63.3%
31 - 36 Months	54	13.0%	316	76.3%
37 - 42 Months	18	4.3%	334	80.7%
43 - 48 Months	9	2.2%	343	82.9%
49 - 54 Months	18	4.3%	361	87.2%
55 - 60 Months	7	1.7%	368	88.9%
5.01 - 6.00 Yrs	11	2.7%	379	91.5%
6.01 - 7.00 Yrs	11	2.7%	390	94.2%
7.01 - 8.00 Yrs	7	1.7%	397	95.9%
8.01 - 9.00 Yrs	3	0.7%	400	96.6%
9.01 - 10.00 Yrs	2	0.5%	402	97.1%
10.01 - 11.00 Yrs	2	0.5%	404	97.6%
13.01 - 14.00 Yrs	3	0.7%	407	98.3%
14.01 - 15.00 Yrs	1	0.2%	408	98.6%
15.01 - 16.00 Yrs	1	0.2%	409	98.8%
17.01 - 18.00 Yrs	1	0.2%	410	99.0%
18.01 - 19.00 Yrs	1	0.2%	411	99.3%
Over 20 Years	3	0.7%	414	100.0%

Adult Female Total Population - FY2007 Statistical Reports

Most Serious Offense

Offense Arrest	Number	Percent
POS CNTRL SUB EXCEPT MARIJUANA	82	20.0%
MANU/DIST/DEL/DISP OR POSS W/I	64	15.6%
THEFT	53	12.9%
FORGERY	48	11.7%
ROBBERY	17	4.1%
ASSAULT	16	3.9%
BURGLARY	15	3.6%
MANSLAUGHTER	14	3.4%
CHILD ABUSE	13	3.2%
DRIVING WHILE INTOXICATED	8	1.9%
MURDER 1ST DEGREE	8	1.9%
MURDER 2ND DEGREE	8	1.9%
COUNTY SAFEKEEPER	7	1.7%
DRIVING UNDER REVOKED LICENSE	7	1.7%
VIOL OF FINANCIAL TRANS DEVICE	7	1.7%
DRIVING UNDER INFLUENCE/INJURY	6	1.5%
BAD CHECKS	4	1.0%
SEXUAL ASSAULT 1ST DEGREE	4	1.0%
CRIMINAL IMPERSONATION	3	0.7%
ESCAPE	3	0.7%
SEXUAL ASSAULT ON A CHILD	3	0.7%
AQUIRING CONT SUBSTNC BY FRAUD	2	0.5%
DLNG NARCOTICS/CNTRL SUBSTANCE	2	0.5%
SEXUAL ASSULT OF CHILD 1ST DEG	2	0.5%
TERRORISTIC THREATS	2	0.5%
AIDING AND ABETTING	1	0.2%
AIDING CONSUMMATION OF FELONY	1	0.2%
ARSON 2ND DEGREE	1	0.2%
ASLT PEAC OFCR/DCS EMP	1	0.2%
CRIMINAL NON-SUPPORT	1	0.2%
CRIMINAL TRESPASS	1	0.2%
FALSE IMPRISONMENT 1ST DEGREE	1	0.2%
MOTOR VEHICLE HOMICIDE	1	0.2%
OPERATE MOTOR VEH/AVOID ARREST	1	0.2%
POS OF FRGD INST \$75 - \$300	1	0.2%
POS OF OVER 1 LB. OF MARIJUANA	1	0.2%
POSS DEADLY WEAP BY FELON/FUG	1	0.2%
VIOLATION OF CUSTODY	1	0.2%
VULNERABLE ADULT ABUSE	1	0.2%
Grand Total	411	100.0%

Data Unavailable: 3

Most Serious Offense Category

Offense Category	# of Inmates	Percent
Drugs	151	36.7%
Fraud	62	15.1%
Theft	53	12.9%
Assault	33	8.0%
Homicide	30	7.3%
Motor Vehicle	23	5.6%
Robbery	17	4.1%
Burglary	15	3.6%
Other	14	3.4%
Sex Offenses	9	2.2%
Arson	1	0.2%
Morals	1	0.2%
Restraint	1	0.2%
Weapons	1	0.2%
Grand Total	411	100.0%

Data Unavailable: 3

Adult Female Total Population - FY2007 Statistical Reports

Minimum Sentence

Years	Number	Percent	Cumulative Number	Cumulative Percent
1.00 Yr or Less	64	15.5%	64	15.5%
1.01-2.00 Yrs	147	35.5%	211	51.0%
2.01-3.00 Yrs	44	10.6%	255	61.6%
3.01-4.00 Yrs	38	9.2%	293	70.8%
4.01-5.00 Yrs	25	6.0%	318	76.8%
5.01-6.00 Yrs	12	2.9%	330	79.7%
6.01-7.00 Yrs	11	2.7%	341	82.4%
7.01-8.00 Yrs	9	2.2%	350	84.5%
8.01-9.00 Yrs	6	1.4%	356	86.0%
9.01-10.00 Yrs	16	3.9%	372	89.9%
10.01-11.00 Yrs	3	0.7%	375	90.6%
11.01-12.00 Yrs	3	0.7%	378	91.3%
12.01-13.00 Yrs	2	0.5%	380	91.8%
14.01-15.00 Yrs	3	0.7%	383	92.5%
16.01-17.00 Yrs	1	0.2%	384	92.8%
19.01-20.00 Yrs	4	1.0%	388	93.7%
Over 20 Years	16	3.9%	404	97.6%
Life	10	2.4%	414	100.0%

Maximum Sentence

Years	Number	Percent	Cumulative Number	Cumulative Percent
1.00 Yr or Less	25	6.0%	25	6.0%
1.01-2.00 Yrs	31	7.5%	56	13.5%
2.01-3.00 Yrs	61	14.7%	117	28.3%
3.01-4.00 Yrs	59	14.3%	176	42.5%
4.01-5.00 Yrs	69	16.7%	245	59.2%
5.01-6.00 Yrs	21	5.1%	266	64.3%
6.01-7.00 Yrs	12	2.9%	278	67.1%
7.01-8.00 Yrs	22	5.3%	300	72.5%
8.01-9.00 Yrs	6	1.4%	306	73.9%
9.01-10.00 Yrs	20	4.8%	326	78.7%
10.01-11.00 Yrs	5	1.2%	331	80.0%
11.01-12.00 Yrs	6	1.4%	337	81.4%
12.01-13.00 Yrs	2	0.5%	339	81.9%
13.01-14.00 Yrs	4	1.0%	343	82.9%
14.01-15.00 Yrs	7	1.7%	350	84.5%
15.01-16.00 Yrs	7	1.7%	357	86.2%
16.01-17.00 Yrs	2	0.5%	359	86.7%
17.01-18.00 Yrs	1	0.2%	360	87.0%
18.01-19.00 Yrs	2	0.5%	362	87.4%
19.01-20.00 Yrs	13	3.1%	375	90.6%
Over 20 Years	28	6.8%	403	97.3%
Life	11	2.7%	414	100.0%

Adult Male Total Population - FY2007 Statistical Reports

Current Age

Age	Number	Percent	Cumulative Number	Cumulative Percent
16	1	0.0%	1	0.0%
17	1	0.0%	2	0.1%
18	12	0.3%	14	0.4%
19	37	0.9%	51	1.3%
20 - 24	664	16.6%	715	17.9%
25 - 29	717	18.0%	1432	35.9%
30 - 34	528	13.2%	1960	49.1%
35 - 39	540	13.5%	2500	62.7%
40 - 44	501	12.6%	3001	75.3%
45 - 49	416	10.4%	3417	85.7%
50 - 54	290	7.3%	3707	93.0%
55 - 59	149	3.7%	3856	96.7%
60 and Over	132	3.3%	3988	100.0%

Average Age

Current Age	# of Inmates
34.82	3988

Race

Race	Number	Percent
White	2210	55.4%
Black	1065	26.7%
Hispanic	499	12.5%
Native American	177	4.4%
Asian	37	0.9%
Grand Total	3988	100.0%

Commitment Area

Region	Number	Percent
Metro Omaha	1630	40.9%
Metro Lincoln	604	15.1%
Southeast	406	10.2%
Northeast	504	12.6%
South Central	541	13.6%
North Central	33	0.8%
Panhandle	246	6.2%
Out of State	18	0.5%
Data Unavailable	6	0.2%
Grand Total	3988	100.0%

Current Custody

Custody	Number	Percent	Cumulative Number	Cumulative Percent
MAX-Restricted	1176	29.5%	1176	29.5%
MED-Restricted	1236	31.0%	2412	60.5%
MIN-Dir Con Supr	1062	26.6%	3474	87.1%
MIN-Intrmt Supr	38	1.0%	3512	88.1%
COMM-Detail	268	6.7%	3780	94.8%
COMM-Wrk / Ed Ris	207	5.2%	3987	100.0%
COMM-W Level A	1	0.0%	3988	100.0%

Record Center

Record Center	Number	Percent	Cumulative Number	Cumulative Percent
NSP	1102	27.6%	1102	27.6%
TSC	898	22.5%	2000	50.2%
OCC	600	15.0%	2600	65.2%
LCC	487	12.2%	3087	77.4%
DEC	372	9.3%	3459	86.7%
CCL	292	7.3%	3751	94.1%
CCO	140	3.5%	3891	97.6%
NCY	97	2.4%	3988	100.0%

Admission Type

Admission Type	Number	Percent
First-Time	2346	58.8%
Multiple	1591	39.9%
Interstate Trans	18	0.5%
County Safekeeper	15	0.4%
Evaluator	12	0.3%
Unavailable	6	0.2%
Grand Total	3988	100.0%

Jurisdiction

Jurisdiction	Number	Percent
Nebraska	3970	99.5%
Interstate Transfer	18	0.5%
Grand Total	3988	100.0%

Adult Male Total Population - FY2007 Statistical Reports

Previous Parole

Parole	Number	Percent
NO	3622	90.8%
YES	366	9.2%
Grand Total	3988	100.0%

Marital Status

Marital Status	Number	Percent
SINGLE	2337	58.6%
MARRIED	932	23.4%
DIVORCED	652	16.3%
WIDOWED	31	0.8%
DATA UNAVAILABLE	18	0.5%
COMMON LAW	9	0.2%
SEPARATED	8	0.2%
OTHER	1	0.0%
Grand Total	3988	100.0%

Most Serious Offense Category

Offense Category	# of Inmates	Percent
Sex Offenses	665	16.7%
Drugs	611	15.4%
Homicide	473	11.9%
Assault	466	11.7%
Robbery	379	9.5%
Theft	355	8.9%
Burglary	340	8.5%
Motor Vehicle	255	6.4%
Other	127	3.2%
Fraud	125	3.1%
Weapons	69	1.7%
Restraint	52	1.3%
Morals	43	1.1%
Arson	19	0.5%
Grand Total	3979	100.0%

Data Unavailable: 9

Average Length of Stay

Years	Months	Days	# of Inmates
4.86	58.26	1773	3988

Length of Stay in Institution

Month/Year	Number	Percent	Cumulative Number	Cumulative Percent
7 - 12 Months	199	5.0%	199	5.0%
13 - 18 Months	821	20.6%	1020	25.6%
19 - 24 Months	530	13.3%	1550	38.9%
25 - 30 Months	190	4.8%	1740	43.6%
31 - 36 Months	524	13.1%	2264	56.8%
37 - 42 Months	241	6.0%	2505	62.8%
43 - 48 Months	139	3.5%	2644	66.3%
49 - 54 Months	139	3.5%	2783	69.8%
55 - 60 Months	125	3.1%	2908	72.9%
5.01 - 6.00 Yrs	209	5.2%	3117	78.2%
6.01 - 7.00 Yrs	115	2.9%	3232	81.0%
7.01 - 8.00 Yrs	110	2.8%	3342	83.8%
8.01 - 9.00 Yrs	83	2.1%	3425	85.9%
9.01 - 10.00 Yrs	68	1.7%	3493	87.6%
10.01 - 11.00 Yrs	47	1.2%	3540	88.8%
11.01 - 12.00 Yrs	45	1.1%	3585	89.9%
12.01 - 13.00 Yrs	49	1.2%	3634	91.1%
13.01 - 14.00 Yrs	47	1.2%	3681	92.3%
14.01 - 15.00 Yrs	43	1.1%	3724	93.4%
15.01 - 16.00 Yrs	34	0.9%	3758	94.2%
16.01 - 17.00 Yrs	19	0.5%	3777	94.7%
17.01 - 18.00 Yrs	25	0.6%	3802	95.3%
18.01 - 19.00 Yrs	8	0.2%	3810	95.5%
19.01 - 20.00 Yrs	20	0.5%	3830	96.0%
Over 20 Years	158	4.0%	3988	100.0%

Avg Min & Max Sentence

(Life set to 10-year average of 17.51 Yrs)

Avg MIN Sentence Mo's	Avg MAX Sentence Mo's	# of Inmates
129.10	202.78	3988

Adult Male Total Population - FY2007 Statistical Reports

Minimum Sentence

Years	Number	Percent	Cumulative Number	Cumulative Percent
1.00 Yr or Less	322	8.1%	322	8.1%
1.01-2.00 Yrs	753	18.9%	1075	27.0%
2.01-3.00 Yrs	350	8.8%	1425	35.7%
3.01-4.00 Yrs	293	7.3%	1718	43.1%
4.01-5.00 Yrs	238	6.0%	1956	49.0%
5.01-6.00 Yrs	168	4.2%	2124	53.3%
6.01-7.00 Yrs	106	2.7%	2230	55.9%
7.01-8.00 Yrs	162	4.1%	2392	60.0%
8.01-9.00 Yrs	48	1.2%	2440	61.2%
9.01-10.00 Yrs	284	7.1%	2724	68.3%
10.01-11.00 Yrs	30	0.8%	2754	69.1%
11.01-12.00 Yrs	102	2.6%	2856	71.6%
12.01-13.00 Yrs	25	0.6%	2881	72.2%
13.01-14.00 Yrs	51	1.3%	2932	73.5%
14.01-15.00 Yrs	113	2.8%	3045	76.4%
15.01-16.00 Yrs	42	1.1%	3087	77.4%
16.01-17.00 Yrs	32	0.8%	3119	78.2%
17.01-18.00 Yrs	45	1.1%	3164	79.3%
18.01-19.00 Yrs	8	0.2%	3172	79.5%
19.01-20.00 Yrs	136	3.4%	3308	82.9%
Over 20 Years	467	11.7%	3775	94.7%
Life	203	5.1%	3978	99.7%
Death	10	0.3%	3988	100.0%

Maximum Sentence

Years	Number	Percent	Cumulative Number	Cumulative Percent
1.00 Yr or Less	130	3.3%	130	3.3%
1.01-2.00 Yrs	150	3.8%	280	7.0%
2.01-3.00 Yrs	292	7.3%	572	14.3%
3.01-4.00 Yrs	294	7.4%	866	21.7%
4.01-5.00 Yrs	439	11.0%	1305	32.7%
5.01-6.00 Yrs	193	4.8%	1498	37.6%
6.01-7.00 Yrs	95	2.4%	1593	39.9%
7.01-8.00 Yrs	154	3.9%	1747	43.8%
8.01-9.00 Yrs	73	1.8%	1820	45.6%
9.01-10.00 Yrs	281	7.0%	2101	52.7%
10.01-11.00 Yrs	50	1.3%	2151	53.9%
11.01-12.00 Yrs	129	3.2%	2280	57.2%
12.01-13.00 Yrs	36	0.9%	2316	58.1%
13.01-14.00 Yrs	47	1.2%	2363	59.3%
14.01-15.00 Yrs	136	3.4%	2499	62.7%
15.01-16.00 Yrs	46	1.2%	2545	63.8%
16.01-17.00 Yrs	31	0.8%	2576	64.6%
17.01-18.00 Yrs	37	0.9%	2613	65.5%
18.01-19.00 Yrs	15	0.4%	2628	65.9%
19.01-20.00 Yrs	231	5.8%	2859	71.7%
Over 20 Years	829	20.8%	3688	92.5%
Life	290	7.3%	3978	99.7%
Death	10	0.3%	3988	100.0%

Parole Population - FY2007 Statistical Reports

Current Age

Age	Number	Percent	Cumulative Number	Cumulative Percent
20 - 24	118	12.0%	118	12.0%
25 - 29	176	17.9%	294	29.9%
30 - 34	162	16.5%	456	46.4%
35 - 39	138	14.1%	594	60.5%
40 - 44	138	14.1%	732	74.5%
45 - 49	118	12.0%	850	86.6%
50 - 54	79	8.0%	929	94.6%
55 - 59	31	3.2%	960	97.8%
60 and Over	22	2.2%	982	100.0%

Average Age

Current Age	# of Inmates
35.53	982

Race

Race	Number	Percent
White	632	64.4%
Black	183	18.6%
Hispanic	123	12.5%
Native American	35	3.6%
Asian	8	0.8%
Other	1	0.1%
Grand Total	982	100.0%

Parole Indicator

In Out Codes	Number	Percent
Nebraska Parolees in Nebraska	693	70.6%
Nebraska Paroles to Other States	66	6.7%
Interstate Transfers	149	15.2%
Nebraska Paroled to Detainers	74	7.5%
Grand Total	982	100.0%

Previous Parole

Parole	Number	Percent
NO	898	91.4%
YES	84	8.6%
Grand Total	982	100.0%

Admission Type

Admission Type	Number	Percent
First-Time	541	55.1%
Multiple	291	29.6%
Interstate Trans	150	15.3%
Grand Total	982	100.0%

Gender

Gender	Number	Percent
Male	849	86.5%
Female	133	13.5%
Grand Total	982	100.0%

Parole Population - FY2007 Statistical Reports

Most Serious Offense Category

Offense Category	# of Inmates	Percent
Drugs	331	33.7%
Theft	127	12.9%
Burglary	106	10.8%
Assault	81	8.3%
Motor Vehicle	78	8.0%
Robbery	74	7.5%
Fraud	59	6.0%
Homicide	41	4.2%
Other	25	2.5%
Weapons	23	2.3%
Sex Offenses	17	1.7%
Restraint	8	0.8%
Arson	6	0.6%
Morals	5	0.5%
Grand Total	981	100.0%

Data Unavailable: 1

Average Length of Stay in Institution

Years	Months	Days	# of Inmates
2.83	34.00	1034	833

Commitment Area

Region	Number	Percent
Metro Omaha	307	31.3%
Metro Lincoln	127	12.9%
Southeast	111	11.3%
Northeast	127	12.9%
South Central	98	10.0%
North Central	9	0.9%
Panhandle	54	5.5%
Out of State	145	14.8%
Data Unavailable	4	0.4%
Grand Total	982	100.0%

Length of Stay in Institution

Month/Year	Number	Percent	Cumulative Number	Cumulative Percent
0 - 6 Months	38	4.6%	38	4.6%
7 - 12 Months	225	27.0%	263	31.6%
13 - 18 Months	174	20.9%	437	52.5%
19 - 24 Months	105	12.6%	542	65.1%
25 - 30 Months	35	4.2%	577	69.3%
31 - 36 Months	67	8.0%	644	77.3%
37 - 42 Months	30	3.6%	674	80.9%
43 - 48 Months	19	2.3%	693	83.2%
49 - 54 Months	16	1.9%	709	85.1%
55 - 60 Months	13	1.6%	722	86.7%
5.01 - 6.00 Yrs	15	1.8%	737	88.5%
6.01 - 7.00 Yrs	15	1.8%	752	90.3%
7.01 - 8.00 Yrs	15	1.8%	767	92.1%
8.01 - 9.00 Yrs	4	0.5%	771	92.6%
9.01 - 10.00 Yrs	8	1.0%	779	93.5%
10.01 - 11.00 Yrs	9	1.1%	788	94.6%
11.01 - 12.00 Yrs	6	0.7%	794	95.3%
12.01 - 13.00 Yrs	10	1.2%	804	96.5%
13.01 - 14.00 Yrs	6	0.7%	810	97.2%
14.01 - 15.00 Yrs	3	0.4%	813	97.6%
15.01 - 16.00 Yrs	1	0.1%	814	97.7%
16.01 - 17.00 Yrs	2	0.2%	816	98.0%
17.01 - 18.00 Yrs	1	0.1%	817	98.1%
18.01 - 19.00 Yrs	2	0.2%	819	98.3%
19.01 - 20.00 Yrs	3	0.4%	822	98.7%
Over 20 Years	11	1.3%	833	100.0%

Not including interstate transfers to parole = 149

Parole Population - FY2007 Statistical Reports

Minimum Sentence

Years	Number	Percent	Cumulative Number	Cumulative Percent
1.00 Yr or Less	111	11.3%	111	11.3%
1.01-2.00 Yrs	296	30.1%	407	41.4%
2.01-3.00 Yrs	119	12.1%	526	53.6%
3.01-4.00 Yrs	100	10.2%	626	63.7%
4.01-5.00 Yrs	86	8.8%	712	72.5%
5.01-6.00 Yrs	46	4.7%	758	77.2%
6.01-7.00 Yrs	27	2.7%	785	79.9%
7.01-8.00 Yrs	32	3.3%	817	83.2%
8.01-9.00 Yrs	18	1.8%	835	85.0%
9.01-10.00 Yrs	37	3.8%	872	88.8%
10.01-11.00 Yrs	11	1.1%	883	89.9%
11.01-12.00 Yrs	14	1.4%	897	91.3%
12.01-13.00 Yrs	3	0.3%	900	91.6%
13.01-14.00 Yrs	7	0.7%	907	92.4%
14.01-15.00 Yrs	19	1.9%	926	94.3%
15.01-16.00 Yrs	3	0.3%	929	94.6%
16.01-17.00 Yrs	5	0.5%	934	95.1%
17.01-18.00 Yrs	3	0.3%	937	95.4%
18.01-19.00 Yrs	1	0.1%	938	95.5%
19.01-20.00 Yrs	15	1.5%	953	97.0%
Over 20 Years	26	2.6%	979	99.7%
Life	3	0.3%	982	100.0%

Maximum Sentence

Years	Number	Percent	Cumulative Number	Cumulative Percent
1.00 Yr or Less	14	1.4%	14	1.4%
1.01-2.00 Yrs	64	6.5%	78	7.9%
2.01-3.00 Yrs	123	12.5%	201	20.5%
3.01-4.00 Yrs	121	12.3%	322	32.8%
4.01-5.00 Yrs	162	16.5%	484	49.3%
5.01-6.00 Yrs	70	7.1%	554	56.4%
6.01-7.00 Yrs	47	4.8%	601	61.2%
7.01-8.00 Yrs	52	5.3%	653	66.5%
8.01-9.00 Yrs	35	3.6%	688	70.1%
9.01-10.00 Yrs	80	8.1%	768	78.2%
10.01-11.00 Yrs	9	0.9%	777	79.1%
11.01-12.00 Yrs	21	2.1%	798	81.3%
12.01-13.00 Yrs	11	1.1%	809	82.4%
13.01-14.00 Yrs	8	0.8%	817	83.2%
14.01-15.00 Yrs	27	2.7%	844	85.9%
15.01-16.00 Yrs	10	1.0%	854	87.0%
16.01-17.00 Yrs	5	0.5%	859	87.5%
17.01-18.00 Yrs	7	0.7%	866	88.2%
18.01-19.00 Yrs	8	0.8%	874	89.0%
19.01-20.00 Yrs	24	2.4%	898	91.4%
Over 20 Years	67	6.8%	965	98.3%
Life	17	1.7%	982	100.0%

New Sentenced Admissions - FY2007 Statistical Reports

Age at Admission

Age	Number	Percent	Cumulative Number	Cumulative Percent
16	6	0.3%	6	0.3%
17	17	0.8%	23	1.1%
18	55	2.5%	78	3.6%
19	96	4.4%	174	8.0%
20 - 24	507	23.3%	681	31.3%
25 - 29	359	16.5%	1040	47.7%
30 - 34	288	13.2%	1328	60.9%
35 - 39	277	12.7%	1605	73.7%
40 - 44	247	11.3%	1852	85.0%
45 - 49	169	7.8%	2021	92.7%
50 - 54	87	4.0%	2108	96.7%
55 - 59	42	1.9%	2150	98.7%
60 and Over	28	1.3%	2178	100.0%
Data Unavailable	1	0.0%	2179	100.0%

Average Age at Admission

Gender	Age at Admission	# of Inmates
Male	32.70	1871
Female	33.45	308
Grand Total	32.80	2179

Race

Race	Number	Percent
White	1191	54.7%
Black	539	24.7%
Hispanic	301	13.8%
Native American	118	5.4%
Asian	21	1.0%
Other	8	0.4%
Data Unavailable	1	0.0%
Grand Total	2179	100.0%

Gender

Gender	Number	Percent
Male	1871	85.9%
Female	308	14.1%
Grand Total	2179	100.0%

Admission Type

Admission Type	Number	Percent
First-Time	1384	63.5%
Multiple	790	36.3%
Interstate Trans	5	0.2%
Grand Total	2179	100.0%

Admissions By Month

Month/Year	# of Inmates	Percent
2006/07	161	7.4%
2006/08	204	9.4%
2006/09	193	8.9%
2006/10	177	8.1%
2006/11	178	8.2%
2006/12	197	9.0%
2007/01	178	8.2%
2007/02	166	7.6%
2007/03	177	8.1%
2007/04	172	7.9%
2007/05	195	8.9%
2007/06	181	8.3%
Grand Total	2179	100.0%

Avg Min & Max Sentence

(Life set to 10-year average of 17.51 Yrs)

Avg MIN Sentence Mo's	Avg MAX Sentence Mo's	# of Inmates
43.67	72.75	2179

New Sentenced Admissions - FY2007 Statistical Reports

Most Serious Offense Category - Females

Offense Category	# of Inmates	Percent
Drugs	131	42.7%
Theft	48	15.6%
Fraud	45	14.7%
Motor Vehicle	23	7.5%
Assault	22	7.2%
Burglary	10	3.3%
Other	10	3.3%
Robbery	7	2.3%
Homicide	4	1.3%
Sex Offenses	4	1.3%
Restraint	2	0.7%
Arson	1	0.3%
Grand Total	307	100.0%

Data Unavailable: 1

Most Serious Offense Category - Total

Offense Category	# of Inmates	Percent
Drugs	565	25.9%
Theft	295	13.5%
Assault	269	12.4%
Motor Vehicle	212	9.7%
Sex Offenses	195	9.0%
Burglary	185	8.5%
Fraud	133	6.1%
Robbery	109	5.0%
Other	101	4.6%
Weapons	37	1.7%
Homicide	35	1.6%
Morals	20	0.9%
Restraint	15	0.7%
Arson	7	0.3%
Grand Total	2178	100.0%

Data Unavailable: 1

Commitment Area - Females

Region	Number	Percent
Metro Omaha	121	39.3%
Metro Lincoln	44	14.3%
Southeast	23	7.5%
Northeast	63	20.5%
South Central	37	12.0%
North Central	1	0.3%
Panhandle	18	5.8%
Out of State	1	0.3%
Grand Total	308	100.0%

Most Serious Offense Category - Males

Offense Category	# of Inmates	Percent
Drugs	434	23.2%
Assault	247	13.2%
Theft	247	13.2%
Sex Offenses	191	10.2%
Motor Vehicle	189	10.1%
Burglary	175	9.4%
Robbery	102	5.5%
Other	91	4.9%
Fraud	88	4.7%
Weapons	37	2.0%
Homicide	31	1.7%
Morals	20	1.1%
Restraint	13	0.7%
Arson	6	0.3%
Grand Total	1871	100.0%

Commitment Area - Total

Region	Number	Percent
Metro Omaha	943	43.3%
Metro Lincoln	260	11.9%
Southeast	192	8.8%
Northeast	376	17.3%
South Central	285	13.1%
North Central	12	0.6%
Panhandle	106	4.9%
Out of State	5	0.2%
Grand Total	2179	100.0%

Commitment Area - Males

Region	Number	Percent
Metro Omaha	822	43.9%
Metro Lincoln	216	11.5%
Southeast	169	9.0%
Northeast	313	16.7%
South Central	248	13.3%
North Central	11	0.6%
Panhandle	88	4.7%
Out of State	4	0.2%
Grand Total	1871	100.0%

New Sentenced Admissions - FY2007 Statistical Reports

Minimum Sentence

Years	Number	Percent	Cumulative Number	Cumulative Percent
1.00 Yr or Less	666	30.6%	666	30.6%
1.01-2.00 Yrs	796	36.5%	1462	67.1%
2.01-3.00 Yrs	232	10.6%	1694	77.7%
3.01-4.00 Yrs	131	6.0%	1825	83.8%
4.01-5.00 Yrs	71	3.3%	1896	87.0%
5.01-6.00 Yrs	39	1.8%	1935	88.8%
6.01-7.00 Yrs	24	1.1%	1959	89.9%
7.01-8.00 Yrs	33	1.5%	1992	91.4%
8.01-9.00 Yrs	15	0.7%	2007	92.1%
9.01-10.00 Yrs	48	2.2%	2055	94.3%
10.01-11.00 Yrs	2	0.1%	2057	94.4%
11.01-12.00 Yrs	17	0.8%	2074	95.2%
12.01-13.00 Yrs	3	0.1%	2077	95.3%
13.01-14.00 Yrs	8	0.4%	2085	95.7%
14.01-15.00 Yrs	16	0.7%	2101	96.4%
15.01-16.00 Yrs	5	0.2%	2106	96.6%
16.01-17.00 Yrs	2	0.1%	2108	96.7%
17.01-18.00 Yrs	3	0.1%	2111	96.9%
19.01-20.00 Yrs	14	0.6%	2125	97.5%
Over 20 Years	47	2.2%	2172	99.7%
Life	7	0.3%	2179	100.0%

Maximum Sentence

Years	Number	Percent	Cumulative Number	Cumulative Percent
1.00 Yr or Less	329	15.1%	329	15.1%
1.01-2.00 Yrs	368	16.9%	697	32.0%
2.01-3.00 Yrs	381	17.5%	1078	49.5%
3.01-4.00 Yrs	283	13.0%	1361	62.5%
4.01-5.00 Yrs	285	13.1%	1646	75.5%
5.01-6.00 Yrs	107	4.9%	1753	80.4%
6.01-7.00 Yrs	37	1.7%	1790	82.1%
7.01-8.00 Yrs	56	2.6%	1846	84.7%
8.01-9.00 Yrs	21	1.0%	1867	85.7%
9.01-10.00 Yrs	72	3.3%	1939	89.0%
10.01-11.00 Yrs	11	0.5%	1950	89.5%
11.01-12.00 Yrs	29	1.3%	1979	90.8%
12.01-13.00 Yrs	5	0.2%	1984	91.1%
13.01-14.00 Yrs	13	0.6%	1997	91.6%
14.01-15.00 Yrs	27	1.2%	2024	92.9%
15.01-16.00 Yrs	8	0.4%	2032	93.3%
16.01-17.00 Yrs	7	0.3%	2039	93.6%
17.01-18.00 Yrs	8	0.4%	2047	93.9%
18.01-19.00 Yrs	1	0.0%	2048	94.0%
19.01-20.00 Yrs	30	1.4%	2078	95.4%
Over 20 Years	90	4.1%	2168	99.5%
Life	11	0.5%	2179	100.0%

Revocations Admissions - FY2007 Statistical Reports

Age at Admission

Age	Number	Percent	Cumulative Number	Cumulative Percent
15	1	0.4%	1	0.4%
16	2	0.8%	3	1.1%
17	6	2.3%	9	3.4%
18	7	2.7%	16	6.1%
19	15	5.7%	31	11.9%
20 - 24	66	25.3%	97	37.2%
25 - 29	39	14.9%	136	52.1%
30 - 34	40	15.3%	176	67.4%
35 - 39	35	13.4%	211	80.8%
40 - 44	36	13.8%	247	94.6%
45 - 49	7	2.7%	254	97.3%
50 - 54	5	1.9%	259	99.2%
55 - 59	2	0.8%	261	100.0%

Average Age at Admission

Age at Admission	# of Inmates
30.62	261

Gender

Gender	Number	Percent
Male	226	86.6%
Female	35	13.4%
Grand Total	261	100.0%

Race

Race	Number	Percent
WHITE	147	56.3%
BLACK	84	32.2%
HISPANIC	15	5.7%
NATIVE AMERICAN	12	4.6%
ASIAN	3	1.1%
Grand Total	261	100.0%

Parole Year & Month

Date on Parole	Number	Percent
1997/07	1	0.4%
2004/01	1	0.4%
2004/07	1	0.4%
2004/08	1	0.4%
2004/10	1	0.4%
2004/11	1	0.4%
2004/12	2	0.8%
2005/02	2	0.8%
2005/03	1	0.4%
2005/04	4	1.5%
2005/05	1	0.4%
2005/06	2	0.8%
2005/07	4	1.5%
2005/08	8	3.1%
2005/09	4	1.5%
2005/10	7	2.7%
2005/11	9	3.4%
2005/12	7	2.7%
2006/01	14	5.4%
2006/02	9	3.4%
2006/03	13	5.0%
2006/04	14	5.4%
2006/05	18	6.9%
2006/06	23	8.8%
2006/07	23	8.8%
2006/08	15	5.7%
2006/09	14	5.4%
2006/10	13	5.0%
2006/11	13	5.0%
2006/12	15	5.7%
2007/01	12	4.6%
2007/02	1	0.4%
2007/03	8	3.1%
2007/04	2	0.8%
Grand Total	261	100.0%

Admission Status

Status	Number	Percent
First - Time	149	57.1%
Multiple	112	42.9%
Grand Total	261	100.0%

Revocations Admissions - FY2007 Statistical Reports

Most Serious Offense/FEMALE

Offense	Number	Percent
POS CNTRL SUB EXCEPT MARIJUANA	11	31.4%
FORGERY 2ND DEGREE	4	11.4%
BURGLARY	2	5.7%
MANU/DIST/DEL/DISP OR POSS W/I	2	5.7%
ROBBERY	2	5.7%
THEFT BY DECEPTION	2	5.7%
THEFT BY RECEIVING STOLEN PROP	2	5.7%
ASSAULT 1ST DEGREE	1	2.9%
ASSAULT 3RD DEGREE	1	2.9%
BAD CHECK MORE THAN \$1000	1	2.9%
DRIVING UNDER INFLUENCE/INJURY	1	2.9%
DRIVING WHILE INTOXICATED	1	2.9%
ESCAPE	1	2.9%
MANSLAUGHTER	1	2.9%
THEFT BY SHOPLIFTING	1	2.9%
THEFT BY UNLWFL TAKING OR DISP	1	2.9%
VIOL OF FINANCIAL TRANS DEVICE	1	2.9%
Grand Total	35	100.0%

Most Serious Offense/MALE

Offense	Number	Percent
ROBBERY	31	13.7%
BURGLARY	29	12.8%
POS CNTRL SUB EXCEPT MARIJUANA	25	11.1%
THEFT BY RECEIVING STOLEN PROP	22	9.7%
MANU/DIST/DEL/DISP OR POSS W/I	19	8.4%
DRIVING UNDER REVOKED LICENSE	17	7.5%
FORGERY 2ND DEGREE	15	6.6%
THEFT BY UNLWFL TAKING OR DISP	14	6.2%
ASSAULT 1ST DEGREE	5	2.2%
DRIVING WHILE INTOXICATED	5	2.2%
TERRORISTIC THREATS	5	2.2%
ASSAULT 2ND DEGREE	4	1.8%
CRIMINAL MISCHIEF	4	1.8%
STRANGULATION	3	1.3%
THEFT	3	1.3%
THEFT BY SHOPLIFTING	3	1.3%
VIOLATION OF PROTECTION ORDER	3	1.3%
OPERATE MOTOR VEH/AVOID ARREST	2	0.9%
UNLAWFUL DISCHARGE OF FIREARM	2	0.9%
VIOL OF FINANCIAL TRANS DEVICE	2	0.9%
ACCESSORY TO A FELONY	1	0.4%
ASLT PEAC OFCR/DCS EMP 3RD DGR	1	0.4%
BAD CHECK MORE THAN \$1000	1	0.4%
CRIMINAL TRESPASS	1	0.4%
FALSE IMPRISONMENT 1ST DEGREE	1	0.4%
FALSE REPORTING	1	0.4%
MANSLAUGHTER	1	0.4%
MURDER 2ND DEGREE	1	0.4%
POS OF UNDER 1 OZ OF MARIJUANA	1	0.4%
POSS OF ANHYDROUS AMMONIA	1	0.4%
POSSESSION OF BURGLARY TOOLS	1	0.4%
THEFT BY DECEPTION	1	0.4%
TRANS/POSS MACHINE/SHORT GUN	1	0.4%
Grand Total	226	100.0%

Revocations Admissions - FY2007 Statistical Reports

Most Serious Offense Category

Offense Category	Number	Percent
Drugs	59	22.6%
Theft	49	18.8%
Robbery	33	12.6%
Burglary	32	12.3%
Motor Vehicle	26	10.0%
Fraud	24	9.2%
Assault	20	7.7%
Other	11	4.2%
Homicide	3	1.1%
Weapons	3	1.1%
Restraint	1	0.4%
Grand Total	261	100.0%

Avg Min & Max Sentence

(Life set to 10-year average of 17.51 Yrs)

Avg MIN Sentence Mo's	Avg MAX Sentence Mo's	Number
64.66	140.11	261

County of Commitment

County	Number	Percent
ADAMS	2	0.8%
BOX BUTTE	2	0.8%
BUFFALO	6	2.3%
BUTLER	1	0.4%
CASS	2	0.8%
CEDAR	1	0.4%
CHASE	1	0.4%
CHEYENNE	2	0.8%
CLAY	2	0.8%
CUMING	1	0.4%
CUSTER	1	0.4%
DAKOTA	3	1.1%
DAWES	3	1.1%
DAWSON	5	1.9%
DODGE	10	3.8%
DOUGLAS	110	42.1%
GAGE	3	1.1%
GOSPER	1	0.4%
HALL	3	1.1%
HAMILTON	1	0.4%
HOWARD	1	0.4%
JEFFERSON	2	0.8%
KEITH	1	0.4%
LANCASTER	41	15.7%
LINCOLN	1	0.4%
MADISON	10	3.8%
MORRILL	1	0.4%
NEMAHA	1	0.4%
NUCKOLLS	1	0.4%
OTOE	2	0.8%
PLATTE	7	2.7%
RICHARDSON	1	0.4%
SALINE	3	1.1%
SARPY	10	3.8%
SAUNDERS	2	0.8%
SCOTTS BLUFF	7	2.7%
SEWARD	1	0.4%
SHERIDAN	3	1.1%
STANTON	1	0.4%
THAYER	2	0.8%
WASHINGTON	1	0.4%
YORK	2	0.8%
Grand Total	261	100.0%

Revocations Admissions - FY2007 Statistical Reports

Minimum Sentence

Years	Number	Percent	Cumulative Number	Cumulative Percent
1.00 Yr or Less	32	12.3%	32	12.3%
1.01-2.00 Yrs	90	34.5%	122	46.7%
2.01-3.00 Yrs	39	14.9%	161	61.7%
3.01-4.00 Yrs	30	11.5%	191	73.2%
4.01-5.00 Yrs	20	7.7%	211	80.8%
5.01-6.00 Yrs	11	4.2%	222	85.1%
6.01-7.00 Yrs	6	2.3%	228	87.4%
7.01-8.00 Yrs	10	3.8%	238	91.2%
8.01-9.00 Yrs	2	0.8%	240	92.0%
9.01-10.00 Yrs	4	1.5%	244	93.5%
10.01-11.00 Yrs	2	0.8%	246	94.3%
11.01-12.00 Yrs	1	0.4%	247	94.6%
12.01-13.00 Yrs	2	0.8%	249	95.4%
13.01-14.00 Yrs	1	0.4%	250	95.8%
15.01-16.00 Yrs	1	0.4%	251	96.2%
16.01-17.00 Yrs	1	0.4%	252	96.6%
17.01-18.00 Yrs	1	0.4%	253	96.9%
18.01-19.00 Yrs	1	0.4%	254	97.3%
19.01-20.00 Yrs	3	1.1%	257	98.5%
Over 20 Years	4	1.5%	261	100.0%

Maximum Sentence

Years	Number	Percent	Cumulative Number	Cumulative Percent
1.01-2.00 Yrs	17	6.5%	17	6.5%
2.01-3.00 Yrs	36	13.8%	53	20.3%
3.01-4.00 Yrs	36	13.8%	89	34.1%
4.01-5.00 Yrs	44	16.9%	133	51.0%
5.01-6.00 Yrs	20	7.7%	153	58.6%
6.01-7.00 Yrs	7	2.7%	160	61.3%
7.01-8.00 Yrs	20	7.7%	180	69.0%
8.01-9.00 Yrs	10	3.8%	190	72.8%
9.01-10.00 Yrs	20	7.7%	210	80.5%
10.01-11.00 Yrs	3	1.1%	213	81.6%
11.01-12.00 Yrs	7	2.7%	220	84.3%
12.01-13.00 Yrs	4	1.5%	224	85.8%
13.01-14.00 Yrs	3	1.1%	227	87.0%
14.01-15.00 Yrs	8	3.1%	235	90.0%
15.01-16.00 Yrs	2	0.8%	237	90.8%
16.01-17.00 Yrs	1	0.4%	238	91.2%
18.01-19.00 Yrs	3	1.1%	241	92.3%
19.01-20.00 Yrs	2	0.8%	243	93.1%
Over 20 Years	18	6.9%	261	100.0%

New Sentenced & Revocations Admissions - FY2007 Statistical Reports

Minimum Sentence

Years	Number	Percent	Cumulative Number	Cumulative Percent
1.00 Yr or Less	702	28.7%	702	28.7%
1.01-2.00 Yrs	888	36.3%	1590	65.0%
2.01-3.00 Yrs	270	11.0%	1860	76.0%
3.01-4.00 Yrs	163	6.7%	2023	82.7%
4.01-5.00 Yrs	92	3.8%	2115	86.4%
5.01-6.00 Yrs	51	2.1%	2166	88.5%
6.01-7.00 Yrs	28	1.1%	2194	89.7%
7.01-8.00 Yrs	44	1.8%	2238	91.5%
8.01-9.00 Yrs	18	0.7%	2256	92.2%
9.01-10.00 Yrs	52	2.1%	2308	94.3%
10.01-11.00 Yrs	2	0.1%	2310	94.4%
11.01-12.00 Yrs	20	0.8%	2330	95.2%
12.01-13.00 Yrs	4	0.2%	2334	95.4%
13.01-14.00 Yrs	8	0.3%	2342	95.7%
14.01-15.00 Yrs	17	0.7%	2359	96.4%
15.01-16.00 Yrs	6	0.2%	2365	96.6%
16.01-17.00 Yrs	4	0.2%	2369	96.8%
17.01-18.00 Yrs	4	0.2%	2373	97.0%
19.01-20.00 Yrs	17	0.7%	2390	97.7%
Over 20 Years	50	2.0%	2440	99.7%
Life	7	0.3%	2447	100.0%

Maximum Sentence

Years	Number	Percent	Cumulative Number	Cumulative Percent
1.00 Yr or Less	335	13.7%	335	13.7%
1.01-2.00 Yrs	383	15.7%	718	29.3%
2.01-3.00 Yrs	414	16.9%	1132	46.3%
3.01-4.00 Yrs	322	13.2%	1454	59.4%
4.01-5.00 Yrs	333	13.6%	1787	73.0%
5.01-6.00 Yrs	126	5.1%	1913	78.2%
6.01-7.00 Yrs	46	1.9%	1959	80.1%
7.01-8.00 Yrs	78	3.2%	2037	83.2%
8.01-9.00 Yrs	28	1.1%	2065	84.4%
9.01-10.00 Yrs	94	3.8%	2159	88.2%
10.01-11.00 Yrs	14	0.6%	2173	88.8%
11.01-12.00 Yrs	37	1.5%	2210	90.3%
12.01-13.00 Yrs	8	0.3%	2218	90.6%
13.01-14.00 Yrs	17	0.7%	2235	91.3%
14.01-15.00 Yrs	34	1.4%	2269	92.7%
15.01-16.00 Yrs	10	0.4%	2279	93.1%
16.01-17.00 Yrs	8	0.3%	2287	93.5%
17.01-18.00 Yrs	8	0.3%	2295	93.8%
18.01-19.00 Yrs	3	0.1%	2298	93.9%
19.01-20.00 Yrs	34	1.4%	2332	95.3%
Over 20 Years	104	4.3%	2436	99.6%
Life	11	0.4%	2447	100.0%

New Sentenced & Revocations Admissions - FY2007 Statistical Reports

Age at Admission

Age	Number	Percent	Cumulative Number	Cumulative Percent
15	1	0.0%	1	0.0%
16	7	0.3%	8	0.3%
17	23	0.9%	31	1.3%
18	63	2.6%	94	3.8%
19	112	4.6%	206	8.4%
20 - 24	574	23.5%	780	31.9%
25 - 29	401	16.4%	1181	48.3%
30 - 34	326	13.3%	1507	61.6%
35 - 39	310	12.7%	1817	74.3%
40 - 44	286	11.7%	2103	85.9%
45 - 49	177	7.2%	2280	93.2%
50 - 54	93	3.8%	2373	97.0%
55 - 59	44	1.8%	2417	98.8%
60 and Over	29	1.2%	2446	100.0%
Data Unavailable	1	0.0%	2447	100.0%

Gender

Gender	Number	Percent
Male	2102	85.9%
Female	345	14.1%
Grand Total	2447	100.0%

Race

Race	Number	Percent
White	1339	54.7%
Black	626	25.6%
Hispanic	319	13.0%
Native American	130	5.3%
Asian	24	1.0%
Other	8	0.3%
Data Unavailable	1	0.0%
Grand Total	2447	100.0%

Admission Status

Status	Number	Percent
First - Time	1532	62.6%
Multiple	904	36.9%
Data Unavailable	6	0.2%
Interstate Transfer	5	0.2%
Grand Total	2447	100.0%

Admission Type

Type	Number	Percent
New Admission	2179	89.0%
Revocation	268	11.0%
Grand Total	2447	100.0%

Most Serious Offense Category

Category	Number	Percent
Homicide	38	1.6%
Robbery	148	6.1%
Burglary	216	8.9%
Assault	289	11.8%
Theft	345	14.1%
Sex Offenses	195	8.0%
Restraint	16	0.7%
Arson	7	0.3%
Drugs	621	25.5%
Fraud	157	6.4%
Weapons	40	1.6%
Motor Vehicle	238	9.8%
Other	110	4.5%
Morals	20	0.8%
Grand Total	2440	100.0%

Data Unavailable: 7

Evaluator / Safekeeper Admissions - FY2007 Statistical Reports

Age at Admission

Age	Number	Percent	Cumulative Number	Cumulative Percent
15	1	0.4%	1	0.4%
16	1	0.4%	2	0.8%
17	3	1.2%	5	2.0%
18	10	4.0%	15	6.1%
19	14	5.7%	29	11.7%
20 - 24	40	16.2%	69	27.9%
25 - 29	33	13.4%	102	41.3%
30 - 34	37	15.0%	139	56.3%
35 - 39	28	11.3%	167	67.6%
40 - 44	27	10.9%	194	78.5%
45 - 49	22	8.9%	216	87.4%
50 - 54	11	4.5%	227	91.9%
55 - 59	7	2.8%	234	94.7%
60 and Over	12	4.9%	246	99.6%
Data Unavailable	1	0.4%	247	100.0%

Average Age at Admission

Age at Admission	# of Inmates
34.79	247

Gender

Gender	Number	Percent
Male	199	80.6%
Female	48	19.4%
Grand Total	247	100.0%

Race

Race	Number	Percent
White	199	80.6%
Black	23	9.3%
Hispanic	14	5.7%
American Indian	10	4.0%
Asian	1	0.4%
Grand Total	247	100.0%

Status

Status	Number	Percent
County Safekeeper	191	77.3%
Evaluator	55	22.3%
Federal Safekeeper	1	0.4%
Grand Total	247	100.0%

Admissions By Month

Month/Year	# of Inmates	Percent
2006/07	23	9.3%
2006/08	19	7.7%
2006/09	23	9.3%
2006/10	24	9.7%
2006/11	23	9.3%
2006/12	25	10.1%
2007/01	29	11.7%
2007/02	8	3.2%
2007/03	13	5.3%
2007/04	21	8.5%
2007/05	19	7.7%
2007/06	20	8.1%
Grand Total	247	100.0%

Commitment Area

Region	Number	Percent
Metro Omaha	25	10.1%
Metro Lincoln	4	1.6%
Southeast	95	38.5%
Northeast	73	29.6%
South Central	30	12.1%
North Central	3	1.2%
Panhandle	15	6.1%
Data Unavailable	2	0.8%
Grand Total	247	100.0%

WEC Admissions - FY2007 Statistical Reports

Age at Admission

Age	Number	Percent	Cumulative Number	Cumulative Percent
16	1	0.5%	1	0.5%
17	7	3.3%	8	3.7%
18	33	15.3%	41	19.1%
19	36	16.7%	77	35.8%
20 - 24	71	33.0%	148	68.8%
25 - 29	21	9.8%	169	78.6%
30 - 34	15	7.0%	184	85.6%
35 - 39	11	5.1%	195	90.7%
40 - 44	10	4.7%	205	95.3%
45 - 49	7	3.3%	212	98.6%
50 - 54	2	0.9%	214	99.5%
Data Unavailable	1	0.5%	215	100.0%

Average Age at Admission

Age at Admission	# of Inmates
24.82	215

Gender

Gender	Number	Percent
Male	175	81.4%
Female	40	18.6%
Grand Total	215	100.0%

Race

Race	Number	Percent
White	160	74.4%
Black	24	11.2%
Hispanic	18	8.4%
American Indian	7	3.3%
Other	5	2.3%
Asian	1	0.5%
Grand Total	215	100.0%

Admissions By Month

Month/Year	# of Inmates	Percent
2006/07	20	9.3%
2006/08	20	9.3%
2006/09	19	8.8%
2006/10	28	13.0%
2006/11	11	5.1%
2006/12	16	7.4%
2007/01	19	8.8%
2007/02	14	6.5%
2007/03	17	7.9%
2007/04	24	11.2%
2007/05	18	8.4%
2007/06	9	4.2%
Grand Total	215	100.0%

Most Serious Offense Category

Offense Category	# of Inmates	Percent
Drugs	59	29.2%
Burglary	49	24.3%
Theft	37	18.3%
Robbery	16	7.9%
Assault	12	5.9%
Other	12	5.9%
Fraud	10	5.0%
Motor Vehicle	6	3.0%
Weapons	1	0.5%
Grand Total	202	100.0%

Data Unavailable: 13

WEC Admissions - FY2007 Statistical Reports

County of Commitment

County	Number	Percent
ADAMS	4	2.0%
BOX BUTTE	6	3.0%
BUFFALO	10	5.0%
BUTLER	2	1.0%
CHEYENNE	2	1.0%
CLAY	4	2.0%
COLFAX	1	0.5%
CUMING	1	0.5%
DAKOTA	11	5.4%
DAWSON	6	3.0%
DIXON	1	0.5%
DODGE	5	2.5%
DOUGLAS	25	12.4%
FILLMORE	2	1.0%
FRANKLIN	1	0.5%
FRONTIER	2	1.0%
GAGE	3	1.5%
HALL	24	11.9%
HAMILTON	1	0.5%
HOWARD	1	0.5%
JEFFERSON	2	1.0%
KIMBALL	1	0.5%
LANCASTER	26	12.9%
LINCOLN	2	1.0%
MADISON	7	3.5%
MORRILL	1	0.5%
NEMAHA	6	3.0%
NUCKOLLS	1	0.5%
OTOE	2	1.0%
PAWNEE	1	0.5%
PHELPS	1	0.5%
PIERCE	1	0.5%
PLATTE	4	2.0%
RED WILLOW	4	2.0%
RICHARDSON	5	2.5%
SALINE	5	2.5%
SARPY	3	1.5%
SAUNDERS	6	3.0%
SCOTTS BLUFF	2	1.0%
SEWARD	2	1.0%
STANTON	1	0.5%
THAYER	2	1.0%
WASHINGTON	4	2.0%
YORK	1	0.5%
Grand Total	202	100.0%

Data Unavailable: 13

Institutional Releases - FY2007 Statistical Reports

Age at Admission

Age	Number	Percent	Cumulative Number	Cumulative Percent
15	1	0.0%	1	0.0%
16	7	0.3%	8	0.3%
17	18	0.7%	26	1.0%
18	75	3.0%	101	4.0%
19	105	4.2%	206	8.2%
20 - 24	601	24.0%	807	32.2%
25 - 29	422	16.8%	1229	49.0%
30 - 34	326	13.0%	1555	62.1%
35 - 39	303	12.1%	1858	74.1%
40 - 44	319	12.7%	2177	86.9%
45 - 49	191	7.6%	2368	94.5%
50 - 54	81	3.2%	2449	97.7%
55 - 59	37	1.5%	2486	99.2%
60 and Over	20	0.8%	2506	100.0%
Grand Total	2506	100.0%	2506	100.0%

Average Age at Admission

Age at Admission	# of Inmates
32.52	2506

Race

Race	Number	Percent
WHITE	1473	58.8%
BLACK	587	23.4%
HISPANIC	303	12.1%
NATIVE AMERICAN	125	5.0%
ASIAN	15	0.6%
OTHER	3	0.1%
Grand Total	2506	100.0%

Release Type (by gender)

Release Type	Females	% of Females	Males	% of Males	Total	% of Total
Mandatory Discharge	186	53.8%	1233	57.1%	1419	56.6%
Parole	157	45.4%	909	42.1%	1066	42.5%
Deceased	2	0.6%	12	0.6%	14	0.6%
Other	1	0.3%	5	0.2%	6	0.2%
Expiration of Sentence			1	0.0%	1	0.0%
Grand Total	346	100.0%	2160	100.0%	2506	100.0%

Admission Status

Status	Number	Percent
First - Time	1571	62.7%
Multiple	928	37.0%
Interstate Transfer	7	0.3%
Grand Total	2506	100.0%

Avg Min & Max Sentence

(Life set to 10-year average of 17.51 Yrs)

Avg MIN Sentence Mo's	Avg MAX Sentence Mo's	Number
64.99	126.17	2506

Average Length of Stay

Years	Months	Days	# of Inmates
2.11	25.35	771	2506

Institutional Releases - FY2007 Statistical Reports

Length of Stay

Months/Years	Number	Percent	Cumulative Number	Cumulative Percent
0 - 6 Months	536	21.4%	536	21.4%
7 - 12 Months	532	21.2%	1068	42.6%
13 - 18 Months	387	15.4%	1455	58.1%
19 - 24 Months	290	11.6%	1745	69.6%
25 - 30 Months	93	3.7%	1838	73.3%
31 - 36 Months	245	9.8%	2083	83.1%
37 - 42 Months	88	3.5%	2171	86.6%
43 - 48 Months	48	1.9%	2219	88.5%
49 - 54 Months	54	2.2%	2273	90.7%
55 - 60 Months	42	1.7%	2315	92.4%
5.01 - 6.00 Yrs	41	1.6%	2356	94.0%
6.01 - 7.00 Yrs	22	0.9%	2378	94.9%
7.01 - 8.00 Yrs	22	0.9%	2400	95.8%
8.01 - 9.00 Yrs	14	0.6%	2414	96.3%
9.01 - 10.00 Yrs	19	0.8%	2433	97.1%
10.01 - 11.00 Yrs	11	0.4%	2444	97.5%
11.01 - 12.00 Yrs	9	0.4%	2453	97.9%
12.01 - 13.00 Yrs	12	0.5%	2465	98.4%
13.01 - 14.00 Yrs	11	0.4%	2476	98.8%
14.01 - 15.00 Yrs	5	0.2%	2481	99.0%
15.01 - 16.00 Yrs	2	0.1%	2483	99.1%
16.01 - 17.00 Yrs	1	0.0%	2484	99.1%
17.01 - 18.00 Yrs	1	0.0%	2485	99.2%
18.01 - 19.00 Yrs	3	0.1%	2488	99.3%
19.01 - 20.00 Yrs	1	0.0%	2489	99.3%
Over 20 Years	17	0.7%	2506	100.0%
Grand Total	2506	100.0%	2506	100.0%

Most Serious Offense Category

Category	Number	Percent
Drugs	711	28.4%
Theft	341	13.6%
Assault	316	12.6%
Burglary	226	9.0%
Motor Vehicle	214	8.5%
Fraud	151	6.0%
Sex Offenses	147	5.9%
Robbery	151	6.0%
Other	110	4.4%
Weapons	52	2.1%
Homicide	32	1.3%
Morals	21	0.8%
Restraint	16	0.6%
Arson	16	0.6%
Grand Total	2504	100.0%

Data Unavailable: 2

Institutional Releases - FY2007 Statistical Reports

Minimum Sentence

Years	Number	Percent	Cumulative Number	Cumulative Percent
1.00 Yr or Less	806	32.2%	806	32.2%
1.01-2.00 Yrs	867	34.6%	1673	66.8%
2.01-3.00 Yrs	262	10.5%	1935	77.2%
3.01-4.00 Yrs	187	7.5%	2122	84.7%
4.01-5.00 Yrs	109	4.3%	2231	89.0%
5.01-6.00 Yrs	64	2.6%	2295	91.6%
6.01-7.00 Yrs	28	1.1%	2323	92.7%
7.01-8.00 Yrs	46	1.8%	2369	94.5%
8.01-9.00 Yrs	12	0.5%	2381	95.0%
9.01-10.00 Yrs	37	1.5%	2418	96.5%
10.01-11.00 Yrs	10	0.4%	2428	96.9%
11.01-12.00 Yrs	16	0.6%	2444	97.5%
12.01-13.00 Yrs	2	0.1%	2446	97.6%
13.01-14.00 Yrs	4	0.2%	2450	97.8%
14.01-15.00 Yrs	17	0.7%	2467	98.4%
15.01-16.00 Yrs	4	0.2%	2471	98.6%
16.01-17.00 Yrs	5	0.2%	2476	98.8%
17.01-18.00 Yrs	1	0.0%	2477	98.8%
18.01-19.00 Yrs	1	0.0%	2478	98.9%
19.01-20.00 Yrs	6	0.2%	2484	99.1%
Over 20 Years	18	0.7%	2502	99.8%
Life	3	0.1%	2505	100.0%
Death	1	0.0%	2506	100.0%
Grand Total	2506	100.0%	2506	100.0%

Maximum Sentence

Years	Number	Percent	Cumulative Number	Cumulative Percent
1.00 Yr or Less	365	14.6%	365	14.6%
1.01-2.00 Yrs	444	17.7%	809	32.3%
2.01-3.00 Yrs	432	17.2%	1241	49.5%
3.01-4.00 Yrs	270	10.8%	1511	60.3%
4.01-5.00 Yrs	346	13.8%	1857	74.1%
5.01-6.00 Yrs	131	5.2%	1988	79.3%
6.01-7.00 Yrs	66	2.6%	2054	82.0%
7.01-8.00 Yrs	84	3.4%	2138	85.3%
8.01-9.00 Yrs	37	1.5%	2175	86.8%
9.01-10.00 Yrs	100	4.0%	2275	90.8%
10.01-11.00 Yrs	11	0.4%	2286	91.2%
11.01-12.00 Yrs	36	1.4%	2322	92.7%
12.01-13.00 Yrs	19	0.8%	2341	93.4%
13.01-14.00 Yrs	8	0.3%	2349	93.7%
14.01-15.00 Yrs	34	1.4%	2383	95.1%
15.01-16.00 Yrs	11	0.4%	2394	95.5%
16.01-17.00 Yrs	5	0.2%	2399	95.7%
17.01-18.00 Yrs	8	0.3%	2407	96.0%
18.01-19.00 Yrs	7	0.3%	2414	96.3%
19.01-20.00 Yrs	17	0.7%	2431	97.0%
Over 20 Years	68	2.7%	2499	99.7%
Life	6	0.2%	2505	100.0%
Death	1	0.0%	2506	100.0%
Grand Total	2506	100.0%	2506	100.0%

Evaluator / Safekeeper Releases - FY2007 Statistical Reports

Age at Admission

Age	Number	Percent	Cumulative Number	Cumulative Percent
15	1	0.4%	1	0.4%
16	1	0.4%	2	0.8%
17	3	1.2%	5	2.0%
18	10	4.0%	15	6.0%
19	10	4.0%	25	10.1%
20 - 24	41	16.5%	66	26.6%
25 - 29	34	13.7%	100	40.3%
30 - 34	41	16.5%	141	56.9%
35 - 39	29	11.7%	170	68.5%
40 - 44	26	10.5%	196	79.0%
45 - 49	21	8.5%	217	87.5%
50 - 54	11	4.4%	228	91.9%
55 - 59	6	2.4%	234	94.4%
60 and Over	13	5.2%	247	99.6%
Data Unavailable	1	0.4%	248	100.0%

Average Age at Admission

Age at Admission	# of Inmates
34.89	248

Age at Release

Age	Number	Percent	Cumulative Number	Cumulative Percent
	1	0.4%	1	0.4%
16	2	0.8%	3	1.2%
17	2	0.8%	5	2.0%
18	11	4.4%	16	6.5%
19	10	4.0%	26	10.5%
20 - 24	40	16.1%	66	26.6%
25 - 29	33	13.3%	99	39.9%
30 - 34	40	16.1%	139	56.0%
35 - 39	32	12.9%	171	69.0%
40 - 44	25	10.1%	196	79.0%
45 - 49	22	8.9%	218	87.9%
50 - 54	11	4.4%	229	92.3%
55 - 59	6	2.4%	235	94.8%
60 and Over	13	5.2%	248	100.0%

Average Age at Release

Age at Release	# of Inmates
35.03	248

Average Length of Stay

Years	Months	Days	# of Inmates
0.14	1.64	49	248

Institutional Release Date

Year/Month	Number	Percent
2006/07	24	9.7%
2006/08	27	10.9%
2006/09	14	5.6%
2006/10	19	7.7%
2006/11	18	7.3%
2006/12	34	13.7%
2007/01	25	10.1%
2007/02	16	6.5%
2007/03	15	6.0%
2007/04	21	8.5%
2007/05	19	7.7%
2007/06	16	6.5%
Grand Total	248	100.0%

Institutional Release Type

Type	Number	Percent
MANDATORY DISCHARGE	192	77.4%
EXPIRATION OF SENTENCE	35	14.1%
OTHER	21	8.5%
Grand Total	248	100.0%

Race

Race	Number	Percent
White	203	81.9%
Black	24	9.7%
American Indian	10	4.0%
Hispanic	10	4.0%
Asian	1	0.4%
Grand Total	248	100.0%

Gender

Gender	Number	Percent
Male	202	81.5%
Female	46	18.5%
Grand Total	248	100.0%

Status

Status	Number	Percent
County Safekeeper	200	80.6%
Evaluator	47	19.0%
Federal Safekeeper	1	0.4%
Grand Total	248	100.0%

Evaluator / Safekeeper Releases - FY2007 Statistical Reports

Commitment Area

Region	Number	Percent
Metro Omaha	25	10.1%
Metro Lincoln	4	1.6%
Southeast	98	39.5%
Northeast	72	29.0%
South Central	31	12.5%
North Central	5	2.0%
Panhandle	11	4.4%
Data Unavailable	2	0.8%
Grand Total	248	100.0%

Length of Stay in Institution

Months	Number	Percent	Cumulative Number	Cumulative Percent
0 - 1 Month	116	46.8%	116	46.8%
2 Months	56	22.6%	172	69.4%
3 Months	36	14.5%	208	83.9%
4 Months	18	7.3%	226	91.1%
5 Months	12	4.8%	238	96.0%
6 Months	1	0.4%	239	96.4%
7 - 12 Months	9	3.6%	248	100.0%

WEC Releases - FY2007 Statistical Reports

Age at Admission

Age	Number	Percent	Cumulative Number	Cumulative Percent
16	1	0.4%	1	0.4%
17	5	2.2%	6	2.7%
18	30	13.5%	36	16.1%
19	36	16.1%	72	32.3%
20 - 24	75	33.6%	147	65.9%
25 - 29	25	11.2%	172	77.1%
30 - 34	19	8.5%	191	85.7%
35 - 39	12	5.4%	203	91.0%
40 - 44	10	4.5%	213	95.5%
45 - 49	6	2.7%	219	98.2%
50 - 54	2	0.9%	221	99.1%
Data Unavailable	2	0.9%	223	100.0%

Average Age at Admission

Age at Admission	# of Inmates
25.04	223

Age at Release

Age	Number	Percent	Cumulative Number	Cumulative Percent
16	1	0.4%	1	0.4%
17	1	0.4%	2	0.9%
18	21	9.4%	23	10.3%
19	36	16.1%	59	26.5%
20 - 24	87	39.0%	146	65.5%
25 - 29	25	11.2%	171	76.7%
30 - 34	19	8.5%	190	85.2%
35 - 39	13	5.8%	203	91.0%
40 - 44	9	4.0%	212	95.1%
45 - 49	7	3.1%	219	98.2%
50 - 54	2	0.9%	221	99.1%
Data Unavailable	2	0.9%	223	100.0%

Average Age at Release

Age at Admission	# of Inmates
25.36	223

Average Length of Stay

Years	Months	Days	# of Inmates
0.32	3.78	115	223

Release Date

Year/Month	Number	Percent
2006/07	23	10.3%
2006/08	18	8.1%
2006/09	15	6.7%
2006/10	22	9.9%
2006/11	15	6.7%
2006/12	26	11.7%
2007/01	24	10.8%
2007/02	24	10.8%
2007/03	11	4.9%
2007/04	17	7.6%
2007/05	16	7.2%
2007/06	12	5.4%
Grand Total	223	100.0%

Release Type

Type	Number	Percent
WEC RLSE-SUCCESSFUL	195	87.4%
WEC RLSE-REMOVE-PROGRM FAILURE	19	8.5%
WEC RLSE-REMOVAL VOLUNTARY	3	1.3%
WEC RLSE-ABSCOND	2	0.9%
WEC RLSE-MEDICAL/MENTL HEALTH	2	0.9%
WEC RLSE-REMOVED MAX TIME EXP	2	0.9%
Grand Total	223	100.0%

Race

Race	Number	Percent
White	166	74.4%
Black	27	12.1%
Hispanic	17	7.6%
American Indian	6	2.7%
Other	5	2.2%
Asian	1	0.4%
Data Unavailable	1	0.4%
Grand Total	223	100.0%

Gender

Gender	Number	Percent
Male	172	77.1%
Female	51	22.9%
Grand Total	223	100.0%

WEC Releases - FY2007 Statistical Reports

County of Commitment

County	Number	Percent
ADAMS	4	2.0%
ANTELOPE	1	0.5%
BOX BUTTE	4	2.0%
BROWN	1	0.5%
BUFFALO	7	3.5%
BUTLER	2	1.0%
CASS	2	1.0%
CHEYENNE	4	2.0%
CLAY	3	1.5%
CUSTER	1	0.5%
DAKOTA	9	4.5%
DAWSON	5	2.5%
DEUEL	1	0.5%
DIXON	1	0.5%
DODGE	9	4.5%
DOUGLAS	31	15.4%
FILLMORE	2	1.0%
FRANKLIN	1	0.5%
FRONTIER	1	0.5%
GAGE	7	3.5%
HALL	22	10.9%
HAMILTON	1	0.5%
HOLT	1	0.5%
HOWARD	1	0.5%
JEFFERSON	1	0.5%
KIMBALL	1	0.5%
LANCASTER	18	9.0%
LINCOLN	2	1.0%
MADISON	8	4.0%
MERRICK	1	0.5%
NEMAHA	3	1.5%
OTOE	1	0.5%
PAWNEE	1	0.5%
PHELPS	2	1.0%
PIERCE	1	0.5%
PLATTE	3	1.5%
RED WILLOW	3	1.5%
RICHARDSON	6	3.0%
SALINE	5	2.5%
SARPY	4	2.0%
SAUNDERS	7	3.5%
SCOTTS BLUFF	2	1.0%
SEWARD	1	0.5%
STANTON	1	0.5%
THAYER	2	1.0%
VALLEY	1	0.5%
WASHINGTON	6	3.0%
Grand Total	201	100.0%

Data Unavailable: 22

Length of Stay in Institution

Months	Number	Percent	Cumulative Number	Cumulative Percent
0 - 1 Month	11	4.9%	11	4.9%
2 Months	5	2.2%	16	7.2%
3 Months	5	2.2%	21	9.4%
4 Months	159	71.3%	180	80.7%
5 Months	37	16.6%	217	97.3%
6 Months	4	1.8%	221	99.1%
7 - 12 Months	2	0.9%	223	100.0%

Community Corrections Admissions - FY2007 Statistical Reports

Age at Admission to Prison

Age	Number	Percent	Cumulative Number	Cumulative Percent
15	2	0.2%	2	0.2%
16	2	0.2%	4	0.4%
17	5	0.5%	9	0.9%
18	12	1.1%	21	2.0%
19	43	4.1%	64	6.1%
20 - 24	202	19.3%	266	25.5%
25 - 29	142	13.6%	408	39.0%
30 - 34	151	14.4%	559	53.5%
35 - 39	141	13.5%	700	67.0%
40 - 44	161	15.4%	861	82.4%
45 - 49	103	9.9%	964	92.2%
50 - 54	50	4.8%	1014	97.0%
55 - 59	21	2.0%	1035	99.0%
60 and Over	10	1.0%	1045	100.0%

Average Age at Admission to Prison

Age at Admission	# of Inmates
34.50	1045

Gender

Gender	Number	Percent
Male	871	83.3%
Female	174	16.7%
Grand Total	1045	100.0%

Race

Race	Number	Percent
White	657	62.9%
Black	261	25.0%
Hispanic	77	7.4%
Native American	38	3.6%
Asian	10	1.0%
Other	2	0.2%
Grand Total	1045	100.0%

Status

Status	Number	Percent
First - Time	634	60.7%
Multiple	411	39.3%
Grand Total	1045	100.0%

Most Serious Offense Category

Offense Category	# of Inmates	Percent
Drugs	317	30.3%
Theft	149	14.3%
Motor Vehicle	132	12.6%
Assault	95	9.1%
Burglary	94	9.0%
Fraud	77	7.4%
Robbery	61	5.8%
Homicide	37	3.5%
Other	34	3.3%
Sex Offenses	17	1.6%
Weapons	16	1.5%
Morals	6	0.6%
Arson	5	0.5%
Restraint	5	0.5%
Grand Total	1045	100.0%

Community Corrections Admissions - FY2007 Statistical Reports

Minimum Sentence

Years	Number	Percent	Cumulative Number	Cumulative Percent
1.00 Yr or Less	114	10.9%	114	10.9%
1.01-2.00 Yrs	408	39.0%	522	50.0%
2.01-3.00 Yrs	136	13.0%	658	63.0%
3.01-4.00 Yrs	121	11.6%	779	74.5%
4.01-5.00 Yrs	59	5.6%	838	80.2%
5.01-6.00 Yrs	35	3.3%	873	83.5%
6.01-7.00 Yrs	24	2.3%	897	85.8%
7.01-8.00 Yrs	33	3.2%	930	89.0%
8.01-9.00 Yrs	6	0.6%	936	89.6%
9.01-10.00 Yrs	36	3.4%	972	93.0%
10.01-11.00 Yrs	7	0.7%	979	93.7%
11.01-12.00 Yrs	14	1.3%	993	95.0%
12.01-13.00 Yrs	2	0.2%	995	95.2%
13.01-14.00 Yrs	9	0.9%	1004	96.1%
14.01-15.00 Yrs	10	1.0%	1014	97.0%
15.01-16.00 Yrs	6	0.6%	1020	97.6%
16.01-17.00 Yrs	3	0.3%	1023	97.9%
17.01-18.00 Yrs	3	0.3%	1026	98.2%
18.01-19.00 Yrs	1	0.1%	1027	98.3%
19.01-20.00 Yrs	10	1.0%	1037	99.2%
Over 20 Years	8	0.8%	1045	100.0%

Maximum Sentence

Years	Number	Percent	Cumulative Number	Cumulative Percent
1.00 Yr or Less	22	2.1%	22	2.1%
1.01-2.00 Yrs	53	5.1%	75	7.2%
2.01-3.00 Yrs	174	16.7%	249	23.8%
3.01-4.00 Yrs	166	15.9%	415	39.7%
4.01-5.00 Yrs	201	19.2%	616	58.9%
5.01-6.00 Yrs	82	7.8%	698	66.8%
6.01-7.00 Yrs	35	3.3%	733	70.1%
7.01-8.00 Yrs	56	5.4%	789	75.5%
8.01-9.00 Yrs	25	2.4%	814	77.9%
9.01-10.00 Yrs	59	5.6%	873	83.5%
10.01-11.00 Yrs	9	0.9%	882	84.4%
11.01-12.00 Yrs	20	1.9%	902	86.3%
12.01-13.00 Yrs	13	1.2%	915	87.6%
13.01-14.00 Yrs	6	0.6%	921	88.1%
14.01-15.00 Yrs	23	2.2%	944	90.3%
15.01-16.00 Yrs	8	0.8%	952	91.1%
16.01-17.00 Yrs	2	0.2%	954	91.3%
17.01-18.00 Yrs	4	0.4%	958	91.7%
18.01-19.00 Yrs	5	0.5%	963	92.2%
19.01-20.00 Yrs	25	2.4%	988	94.5%
Over 20 Years	51	4.9%	1039	99.4%
Life	6	0.6%	1045	100.0%

Parole Admissions - FY2007 Statistical Reports

Age at Release to Parole

Age	Number	Percent	Cumulative Number	Cumulative Percent
18	5	0.4%	5	0.4%
19	13	1.1%	18	1.5%
20 - 24	242	20.5%	260	22.0%
25 - 29	228	19.3%	488	41.3%
30 - 34	172	14.6%	660	55.9%
35 - 39	157	13.3%	817	69.2%
40 - 44	153	13.0%	970	82.1%
45 - 49	109	9.2%	1079	91.4%
50 - 54	56	4.7%	1135	96.1%
55 - 59	30	2.5%	1165	98.6%
60 and Over	7	0.6%	1172	99.2%
Data Unavailable	9	0.8%	1181	100.0%

Average Age at Admission to Prison

Age at Admission	# of Inmates
32.60	1181

Avg Age at Release to Parole

Age at Release	Number
34.52	1181

Gender

Gender	Number	Percent
Male	1007	85.3%
Female	174	14.7%
Grand Total	1181	100.0%

Race

Race	Number	Percent
White	724	61.3%
Black	250	21.2%
Hispanic	150	12.7%
Native American	45	3.8%
Asian	11	0.9%
Other	1	0.1%
Grand Total	1181	100.0%

Avg Min & Max Sentence

(Life set to 10-year average of 17.51 Yrs)

Avg MIN Sentence Mo's	Avg MAX Sentence Mo's	# of Inmates
42.79	77.41	1181

Status

Status	Number	Percent
First - Time	692	58.6%
Multiple	389	32.9%
Interstate Transfer	100	8.5%
Grand Total	1181	100.0%

Most Serious Offense Category

Offense Category	# of Inmates	Percent
Drugs	410	34.7%
Theft	167	14.2%
Burglary	118	10.0%
Motor Vehicle	112	9.5%
Assault	102	8.6%
Robbery	85	7.2%
Fraud	76	6.4%
Other	40	3.4%
Weapons	26	2.2%
Homicide	17	1.4%
Sex Offenses	10	0.8%
Arson	8	0.7%
Restraint	6	0.5%
Morals	3	0.3%
Grand Total	1180	100.0%

Data Unavailable: 1

Parole Admissions - FY2007 Statistical Reports

Length of Stay in Institution

Month/Year	Number	Percent	Cumulative Number	Cumulative Percent
0 - 6 Months	169	14.3%	169	14.3%
7 - 12 Months	338	28.6%	507	42.9%
13 - 18 Months	225	19.1%	732	62.0%
19 - 24 Months	130	11.0%	862	73.0%
25 - 30 Months	40	3.4%	902	76.4%
31 - 36 Months	99	8.4%	1001	84.8%
37 - 42 Months	42	3.6%	1043	88.3%
43 - 48 Months	23	1.9%	1066	90.3%
49 - 54 Months	21	1.8%	1087	92.0%
55 - 60 Months	15	1.3%	1102	93.3%
5.01 - 6.00 Yrs	15	1.3%	1117	94.6%
6.01 - 7.00 Yrs	12	1.0%	1129	95.6%
7.01 - 8.00 Yrs	14	1.2%	1143	96.8%
8.01 - 9.00 Yrs	3	0.3%	1146	97.0%
9.01 - 10.00 Yrs	5	0.4%	1151	97.5%
10.01 - 11.00 Yrs	4	0.3%	1155	97.8%
11.01 - 12.00 Yrs	2	0.2%	1157	98.0%
12.01 - 13.00 Yrs	7	0.6%	1164	98.6%
13.01 - 14.00 Yrs	6	0.5%	1170	99.1%
14.01 - 15.00 Yrs	3	0.3%	1173	99.3%
15.01 - 16.00 Yrs	1	0.1%	1174	99.4%
17.01 - 18.00 Yrs	1	0.1%	1175	99.5%
18.01 - 19.00 Yrs	1	0.1%	1176	99.6%
19.01 - 20.00 Yrs	1	0.1%	1177	99.7%
Over 20 Years	4	0.3%	1181	100.0%

Region Paroled To

Region	Number	Percent
IMMIGRATION	54	4.6%
US MARSHAL	15	1.3%
Metro Omaha	429	36.3%
Metro Lincoln	266	22.5%
Southeast	60	5.1%
Northeast	92	7.8%
South Central	94	8.0%
North Central	11	0.9%
Panhandle	43	3.6%
Out of State	91	7.7%
Data Unavailable	26	2.2%
Grand Total	1181	100.0%

Parole Admissions - FY2007 Statistical Reports

Minimum Sentence

Years	Number	Percent	Cumulative Number	Cumulative Percent
1.00 Yr or Less	209	17.7%	209	17.7%
1.01-2.00 Yrs	449	38.0%	658	55.7%
2.01-3.00 Yrs	155	13.1%	813	68.8%
3.01-4.00 Yrs	113	9.6%	926	78.4%
4.01-5.00 Yrs	75	6.4%	1001	84.8%
5.01-6.00 Yrs	36	3.0%	1037	87.8%
6.01-7.00 Yrs	16	1.4%	1053	89.2%
7.01-8.00 Yrs	29	2.5%	1082	91.6%
8.01-9.00 Yrs	13	1.1%	1095	92.7%
9.01-10.00 Yrs	23	1.9%	1118	94.7%
10.01-11.00 Yrs	6	0.5%	1124	95.2%
11.01-12.00 Yrs	11	0.9%	1135	96.1%
12.01-13.00 Yrs	2	0.2%	1137	96.3%
13.01-14.00 Yrs	5	0.4%	1142	96.7%
14.01-15.00 Yrs	10	0.8%	1152	97.5%
15.01-16.00 Yrs	4	0.3%	1156	97.9%
16.01-17.00 Yrs	4	0.3%	1160	98.2%
17.01-18.00 Yrs	1	0.1%	1161	98.3%
19.01-20.00 Yrs	5	0.4%	1166	98.7%
Over 20 Years	14	1.2%	1180	99.9%
Life	1	0.1%	1181	100.0%

Maximum Sentence

Years	Number	Percent	Cumulative Number	Cumulative Percent
1.00 Yr or Less	13	1.1%	13	1.1%
1.01-2.00 Yrs	160	13.5%	173	14.6%
2.01-3.00 Yrs	231	19.6%	404	34.2%
3.01-4.00 Yrs	164	13.9%	568	48.1%
4.01-5.00 Yrs	209	17.7%	777	65.8%
5.01-6.00 Yrs	74	6.3%	851	72.1%
6.01-7.00 Yrs	48	4.1%	899	76.1%
7.01-8.00 Yrs	55	4.7%	954	80.8%
8.01-9.00 Yrs	28	2.4%	982	83.1%
9.01-10.00 Yrs	65	5.5%	1047	88.7%
10.01-11.00 Yrs	4	0.3%	1051	89.0%
11.01-12.00 Yrs	23	1.9%	1074	90.9%
12.01-13.00 Yrs	7	0.6%	1081	91.5%
13.01-14.00 Yrs	5	0.4%	1086	92.0%
14.01-15.00 Yrs	16	1.4%	1102	93.3%
15.01-16.00 Yrs	10	0.8%	1112	94.2%
16.01-17.00 Yrs	4	0.3%	1116	94.5%
17.01-18.00 Yrs	4	0.3%	1120	94.8%
18.01-19.00 Yrs	6	0.5%	1126	95.3%
19.01-20.00 Yrs	11	0.9%	1137	96.3%
Over 20 Years	41	3.5%	1178	99.7%
Life	3	0.3%	1181	100.0%

Parole Discharges - FY2007 Statistical Reports

Age at Parole Admission

Age	Number	Percent	Cumulative Number	Cumulative Percent
18	4	0.5%	4	0.5%
19	8	1.0%	12	1.5%
20 - 24	159	20.0%	171	21.5%
25 - 29	159	20.0%	330	41.6%
30 - 34	101	12.7%	431	54.3%
35 - 39	111	14.0%	542	68.3%
40 - 44	112	14.1%	654	82.4%
45 - 49	80	10.1%	734	92.4%
50 - 54	29	3.7%	763	96.1%
55 - 59	23	2.9%	786	99.0%
60 and Over	7	0.9%	793	99.9%
Data Unavailable	1	0.1%	794	100.0%

Avg Age at Parole Admission

Age at Parole	Number
34.74	794

Age at Release from Parole

Age	Number	Percent	Cumulative Number	Cumulative Percent
18	1	0.1%	1	0.1%
19	4	0.5%	5	0.6%
20 - 24	143	18.0%	148	18.6%
25 - 29	157	19.8%	305	38.4%
30 - 34	110	13.9%	415	52.3%
35 - 39	106	13.4%	521	65.6%
40 - 44	116	14.6%	637	80.2%
45 - 49	80	10.1%	717	90.3%
50 - 54	39	4.9%	756	95.2%
55 - 59	24	3.0%	780	98.2%
60 and Over	11	1.4%	791	99.6%
Data Unavailable	3	0.4%	794	100.0%
Grand Total	794	100.0%	794	100.0%

Avg Age at Release from Parole

Age at Release	Number
35.54	794

Race

Race	Number	Percent
White	525	66.1%
Black	136	17.1%
Hispanic	105	13.2%
Native American	23	2.9%
Asian	5	0.6%
Grand Total	794	100.0%

Status

Status	Number	Percent
First - Time	484	61.0%
Multiple	204	25.7%
Interstate Transfer	106	13.4%
Grand Total	794	100.0%

Gender

Gender	Number	Percent
Male	658	82.9%
Female	136	17.1%
Grand Total	794	100.0%

Parole Discharge Date

Date	Number	Percent
2006/07	66	8.3%
2006/08	57	7.2%
2006/09	74	9.3%
2006/10	82	10.3%
2006/11	71	8.9%
2006/12	65	8.2%
2007/01	83	10.5%
2007/02	63	7.9%
2007/03	57	7.2%
2007/04	71	8.9%
2007/05	64	8.1%
2007/06	41	5.2%
Grand Total	794	100.0%

Avg Min & Max Sentence

(Life set to 10-year average of 17.51 Yrs)

Avg MIN Sentence Mo's	Avg MAX Sentence Mo's	# of Inmates
37.50	65.60	794

Parole Discharges - FY2007 Statistical Reports

Average Length of Stay on Parole

Years on Parole	Months on Parole	Days on Parole	# of Inmates
0.81	9.72	295	794

Length of Stay in Institution

Month/Year	Number	Percent	Cumulative Number	Cumulative Percent
0 - 6 Months	168	21.2%	168	21.2%
7 - 12 Months	279	35.1%	447	56.3%
13 - 18 Months	147	18.5%	594	74.8%
19 - 24 Months	70	8.8%	664	83.6%
25 - 30 Months	23	2.9%	687	86.5%
31 - 36 Months	39	4.9%	726	91.4%
37 - 42 Months	14	1.8%	740	93.2%
43 - 48 Months	8	1.0%	748	94.2%
49 - 54 Months	6	0.8%	754	95.0%
55 - 60 Months	2	0.3%	756	95.2%
5.01 - 6.00 Yrs	10	1.3%	766	96.5%
6.01 - 7.00 Yrs	10	1.3%	776	97.7%
7.01 - 8.00 Yrs	5	0.6%	781	98.4%
8.01 - 9.00 Yrs	2	0.3%	783	98.6%
9.01 - 10.00 Yrs	1	0.1%	784	98.7%
10.01 - 11.00 Yrs	4	0.5%	788	99.2%
11.01 - 12.00 Yrs	1	0.1%	789	99.4%
12.01 - 13.00 Yrs	4	0.5%	793	99.9%
15.01 - 16.00 Yrs	1	0.1%	794	100.0%

Avg Total Length of Stay in Institution and Parole

Years	Months	Days	Number
2.18	26.16	796	794

Length of Stay on Parole

Month/Year	Number	Percent	Cumulative Number	Cumulative Percent
0 - 6 Months	346	43.6%	346	43.6%
7 - 12 Months	263	33.1%	609	76.7%
13 - 18 Months	84	10.6%	693	87.3%
19 - 24 Months	45	5.7%	738	92.9%
25 - 30 Months	11	1.4%	749	94.3%
31 - 36 Months	25	3.1%	774	97.5%
37 - 42 Months	7	0.9%	781	98.4%
43 - 48 Months	3	0.4%	784	98.7%
49 - 54 Months	4	0.5%	788	99.2%
55 - 60 Months	1	0.1%	789	99.4%
5.01 - 6.00 Yrs	2	0.3%	791	99.6%
6.01 - 7.00 Yrs	1	0.1%	792	99.7%
9.01 - 10.00 Yrs	2	0.3%	794	100.0%

Parole Discharges - FY2007 Statistical Reports

Total Length of Stay in Institution and Parole

Month/Year	Number	Percent	Cumulative Number	Cumulative Percent
0 - 6 Months	24	3.0%	24	3.0%
7 - 12 Months	182	22.9%	206	25.9%
13 - 18 Months	192	24.2%	398	50.1%
19 - 24 Months	118	14.9%	516	65.0%
25 - 30 Months	45	5.7%	561	70.7%
31 - 36 Months	105	13.2%	666	83.9%
37 - 42 Months	32	4.0%	698	87.9%
43 - 48 Months	21	2.6%	719	90.6%
49 - 54 Months	13	1.6%	732	92.2%
55 - 60 Months	11	1.4%	743	93.6%
5.01 - 6.00 Yrs	9	1.1%	752	94.7%
6.01 - 7.00 Yrs	8	1.0%	760	95.7%
7.01 - 8.00 Yrs	7	0.9%	767	96.6%
8.01 - 9.00 Yrs	7	0.9%	774	97.5%
9.01 - 10.00 Yrs	4	0.5%	778	98.0%
10.01 - 11.00 Yrs	1	0.1%	779	98.1%
11.01 - 12.00 Yrs	4	0.5%	783	98.6%
12.01 - 13.00 Yrs	1	0.1%	784	98.7%
13.01 - 14.00 Yrs	3	0.4%	787	99.1%
14.01 - 15.00 Yrs	5	0.6%	792	99.7%
16.01 - 17.00 Yrs	1	0.1%	793	99.9%
18.01 - 19.00 Yrs	1	0.1%	794	100.0%

Most Serious Offense Category

Offense Category	# of Inmates	Percent
Drugs	320	40.4%
Theft	107	13.5%
Assault	73	9.2%
Motor Vehicle	72	9.1%
Burglary	60	7.6%
Fraud	47	5.9%
Robbery	36	4.5%
Other	32	4.0%
Weapons	17	2.1%
Homicide	11	1.4%
Sex Offenses	7	0.9%
Arson	6	0.8%
Morals	2	0.3%
Restraint	2	0.3%
Grand Total	792	100.0%

Data Unavailable: 2

Region Discharged To

Region	Number	Percent
IMMIGRATION	51	6.4%
US MARSHAL	13	1.6%
Metro Omaha	233	29.3%
Metro Lincoln	155	19.5%
Soutneast	56	7.1%
Northeast	67	8.4%
South Central	78	9.8%
North Central	13	1.6%
Panhandle	33	4.2%
Out of State	88	11.1%
Data Unavailable	7	0.9%
Grand Total	794	100.0%

Parole Discharges - FY2007 Statistical Reports

Minimum Sentence

Years	Number	Percent	Cumulative Number	Cumulative Percent
1.00 Yr or Less	164	20.7%	164	20.7%
1.01-2.00 Yrs	329	41.4%	493	62.1%
2.01-3.00 Yrs	98	12.3%	591	74.4%
3.01-4.00 Yrs	59	7.4%	650	81.9%
4.01-5.00 Yrs	45	5.7%	695	87.5%
5.01-6.00 Yrs	26	3.3%	721	90.8%
6.01-7.00 Yrs	9	1.1%	730	91.9%
7.01-8.00 Yrs	16	2.0%	746	94.0%
8.01-9.00 Yrs	5	0.6%	751	94.6%
9.01-10.00 Yrs	20	2.5%	771	97.1%
10.01-11.00 Yrs	2	0.3%	773	97.4%
11.01-12.00 Yrs	4	0.5%	777	97.9%
13.01-14.00 Yrs	1	0.1%	778	98.0%
14.01-15.00 Yrs	5	0.6%	783	98.6%
15.01-16.00 Yrs	2	0.3%	785	98.9%
19.01-20.00 Yrs	1	0.1%	786	99.0%
Over 20 Years	7	0.9%	793	99.9%
Life	1	0.1%	794	100.0%

Maximum Sentence

Years	Number	Percent	Cumulative Number	Cumulative Percent
1.00 Yr or Less	6	0.8%	6	0.8%
1.01-2.00 Yrs	137	17.3%	143	18.0%
2.01-3.00 Yrs	195	24.6%	338	42.6%
3.01-4.00 Yrs	110	13.9%	448	56.4%
4.01-5.00 Yrs	141	17.8%	589	74.2%
5.01-6.00 Yrs	45	5.7%	634	79.8%
6.01-7.00 Yrs	31	3.9%	665	83.8%
7.01-8.00 Yrs	30	3.8%	695	87.5%
8.01-9.00 Yrs	9	1.1%	704	88.7%
9.01-10.00 Yrs	26	3.3%	730	91.9%
10.01-11.00 Yrs	4	0.5%	734	92.4%
11.01-12.00 Yrs	5	0.6%	739	93.1%
12.01-13.00 Yrs	1	0.1%	740	93.2%
13.01-14.00 Yrs	6	0.8%	746	94.0%
14.01-15.00 Yrs	11	1.4%	757	95.3%
15.01-16.00 Yrs	3	0.4%	760	95.7%
16.01-17.00 Yrs	3	0.4%	763	96.1%
17.01-18.00 Yrs	2	0.3%	765	96.3%
19.01-20.00 Yrs	4	0.5%	769	96.9%
Over 20 Years	24	3.0%	793	99.9%
Life	1	0.1%	794	100.0%

Parole Revocations - FY2007 Statistical Reports

Age at Release to Parole

Age	Number	Percent	Cumulative Number	Cumulative Percent
18	4	1.5%	4	1.5%
19	6	2.3%	10	3.8%
20 - 24	66	25.3%	76	29.1%
25 - 29	43	16.5%	119	45.6%
30 - 34	39	14.9%	158	60.5%
35 - 39	36	13.8%	194	74.3%
40 - 44	35	13.4%	229	87.7%
45 - 49	18	6.9%	247	94.6%
50 - 54	8	3.1%	255	97.7%
55 - 59	5	1.9%	260	99.6%
60 and Over	1	0.4%	261	100.0%

Avg Age at Release to Parole

Age At Release	Number
32.85	261

Age at Revocation

Age	Number	Percent	Cumulative Number	Cumulative Percent
18	2	0.8%	2	0.8%
19	3	1.1%	5	1.9%
20 - 24	61	23.3%	66	25.2%
25 - 29	49	18.7%	115	43.9%
30 - 34	38	14.5%	153	58.4%
35 - 39	35	13.4%	188	71.8%
40 - 44	36	13.7%	224	85.5%
45 - 49	22	8.4%	246	93.9%
50 - 54	10	3.8%	256	97.7%
55 - 59	5	1.9%	261	99.6%
60 and Over	1	0.4%	262	100.0%

Avg Age at Revocation

Age At Revocation	Number
33.49	261

Status

Status	Number	Percent
First - Time	149	57.1%
Multiple	112	42.9%
Grand Total	261	100.0%

Gender

Gender	Number	Percent
Male	226	86.6%
Female	35	13.4%
Grand Total	261	100.0%

Race

Race	Number	Percent
WHITE	147	56.3%
BLACK	84	32.2%
HISPANIC	15	5.7%
NATIVE AMERICAN	12	4.6%
ASIAN	3	1.1%
Grand Total	261	100.0%

Avg Min & Max Sentence

(Life set to 10-year average of 17.51 Yrs)

Avg MIN Sentence Mo's	Avg MAX Sentence Mo's	Number
64.66	140.11	261

Parole Revocations - FY2007 Statistical Reports

Revocation Date

Date	Number	Percent
2006/07	20	7.7%
2006/08	32	12.3%
2006/09	25	9.6%
2006/10	22	8.4%
2006/11	16	6.1%
2006/12	17	6.5%
2007/01	31	11.9%
2007/02	22	8.4%
2007/03	17	6.5%
2007/04	21	8.0%
2007/05	17	6.5%
2007/06	24	9.2%
Grand Total	261	100.0%

Most Serious Offense Category

Offense Category	Number	Percent
Drugs	59	22.6%
Theft	49	18.8%
Robbery	33	12.6%
Burglary	32	12.3%
Motor Vehicle	26	10.0%
Fraud	24	9.2%
Assault	20	7.7%
Other	11	4.2%
Homicide	3	1.1%
Weapons	3	1.1%
Restraint	1	0.4%
Grand Total	261	100.0%

County Paroled To

County	Number	Percent
Adams	2	0.8%
Box Butte	1	0.4%
Buffalo	4	1.5%
Butler	1	0.4%
Cass	2	0.8%
Cedar	1	0.4%
Cheyenne	2	0.8%
Clay	2	0.8%
Cuming	1	0.4%
Custer	1	0.4%
Dakota	1	0.4%
Data Unavailable	91	34.9%
Dawes	3	1.1%
Dawson	4	1.5%
Dodge	8	3.1%
Douglas	65	24.9%
Gage	3	1.1%
Gosper	1	0.4%
Hall	2	0.8%
Hamilton	1	0.4%
Howard	1	0.4%
Jefferson	1	0.4%
Keith	1	0.4%
Lancaster	27	10.3%
Madison	7	2.7%
Nemaha	1	0.4%
Nuckolls	1	0.4%
Phelps	1	0.4%
Platte	4	1.5%
Richardson	1	0.4%
Saline	2	0.8%
Sarpy	5	1.9%
Saunders	2	0.8%
Scotts Bluff	4	1.5%
Seward	1	0.4%
Sheridan	3	1.1%
Thayer	2	0.8%
Washington	1	0.4%
Wayne	1	0.4%
York	2	0.8%
Grand Total	261	100.0%

Parole Revocations - FY2007 Statistical Reports

Minimum Sentence

Years	Number	Percent	Cumulative Number	Cumulative Percent
1.00 Yr or Less	32	12.3%	32	12.3%
1.01-2.00 Yrs	90	34.5%	122	46.7%
2.01-3.00 Yrs	39	14.9%	161	61.7%
3.01-4.00 Yrs	30	11.5%	191	73.2%
4.01-5.00 Yrs	20	7.7%	211	80.8%
5.01-6.00 Yrs	11	4.2%	222	85.1%
6.01-7.00 Yrs	6	2.3%	228	87.4%
7.01-8.00 Yrs	10	3.8%	238	91.2%
8.01-9.00 Yrs	2	0.8%	240	92.0%
9.01-10.00 Yrs	4	1.5%	244	93.5%
10.01-11.00 Yrs	2	0.8%	246	94.3%
11.01-12.00 Yrs	1	0.4%	247	94.6%
12.01-13.00 Yrs	2	0.8%	249	95.4%
13.01-14.00 Yrs	1	0.4%	250	95.8%
15.01-16.00 Yrs	1	0.4%	251	96.2%
16.01-17.00 Yrs	1	0.4%	252	96.6%
17.01-18.00 Yrs	1	0.4%	253	96.9%
18.01-19.00 Yrs	1	0.4%	254	97.3%
19.01-20.00 Yrs	3	1.1%	257	98.5%
Over 20 Years	4	1.5%	261	100.0%

Maximum Sentence

Years	Number	Percent	Cumulative Number	Cumulative Percent
1.01-2.00 Yrs	17	6.5%	17	6.5%
2.01-3.00 Yrs	36	13.8%	53	20.3%
3.01-4.00 Yrs	36	13.8%	89	34.1%
4.01-5.00 Yrs	44	16.9%	133	51.0%
5.01-6.00 Yrs	20	7.7%	153	58.6%
6.01-7.00 Yrs	7	2.7%	160	61.3%
7.01-8.00 Yrs	20	7.7%	180	69.0%
8.01-9.00 Yrs	10	3.8%	190	72.8%
9.01-10.00 Yrs	20	7.7%	210	80.5%
10.01-11.00 Yrs	3	1.1%	213	81.6%
11.01-12.00 Yrs	7	2.7%	220	84.3%
12.01-13.00 Yrs	4	1.5%	224	85.8%
13.01-14.00 Yrs	3	1.1%	227	87.0%
14.01-15.00 Yrs	8	3.1%	235	90.0%
15.01-16.00 Yrs	2	0.8%	237	90.8%
16.01-17.00 Yrs	1	0.4%	238	91.2%
18.01-19.00 Yrs	3	1.1%	241	92.3%
19.01-20.00 Yrs	2	0.8%	243	93.1%
Over 20 Years	18	6.9%	261	100.0%

Nebraska Department of Correctional Services
3-Year Recidivism Data* Report FY2001 to FY2004

Pop:	Releases				Recidivists				Tech Viol*				% Recidivism			
	FY01	FY02	FY03	FY04	FY01	FY02	FY03	FY04	FY01	FY02	FY03	FY04	FY01	FY02	FY03	FY04
FEMALES																
Paroles	67	104	109	133	5	11	14	7	9	19	13	29	20.9	28.8	24.8	27.1
Mand Discharges	<u>79</u>	<u>114</u>	<u>140</u>	<u>119</u>	<u>17</u>	<u>8</u>	<u>24</u>	<u>20</u>	<u>n/a</u>	<u>n/a</u>	<u>n/a</u>	<u>n/a</u>	<u>21.5</u>	<u>7.0</u>	<u>17.1</u>	<u>16.8</u>
TOTAL	146	218	249	252	22	19	38	27	9	19	13	29	21.2	17.4	20.5	22.2
MALES																
Paroles	487	610	558	820	75	97	84	153	131	159	122	195	42.3	42.0	36.9	42.4
Mand Discharges	<u>1003</u>	<u>900</u>	<u>1015</u>	<u>898</u>	<u>217</u>	<u>189</u>	<u>206</u>	<u>182</u>	<u>n/a</u>	<u>n/a</u>	<u>n/a</u>	<u>n/a</u>	<u>21.6</u>	<u>21.0</u>	<u>20.3</u>	<u>20.3</u>
TOTAL	1490	1510	1573	1768	292	286	290	335	131	159	122	195	28.4	29.5	26.2	30.8
FEMALES & MALES																
Paroles	554	714	667	953	80	108	98	160	140	178	135	224	39.7	40.1	34.9	40.3
Mand Discharges	<u>1082</u>	<u>1014</u>	<u>1155</u>	<u>1017</u>	<u>234</u>	<u>197</u>	<u>230</u>	<u>202</u>	<u>n/a</u>	<u>n/a</u>	<u>n/a</u>	<u>n/a</u>	<u>21.6</u>	<u>19.4</u>	<u>19.9</u>	<u>19.9</u>
TOTAL	1636	1728	1822	1970	314	305	328	362	140	178	135	224	27.8	28.0	25.4	29.7

*Starting in fiscal year 2003, NE-DCS began using ASCA-defined measures to configure recidivism rate. The essential difference is that the recidivism rate now includes technical violators in addition to new crime commitments.

**Prior to FY03, NE-DCS reported recidivism rate included only new crime commitments. However, for comparison purposes the FY01 and FY02 recidivism numbers have been re-configured using ASCA-defined measures. All recidivists were committed for new crimes or for technical violations within 3 years of their release date.

THIS PUBLICATION WAS PREPARED BY NEBRASKA
DEPARTMENT OF CORRECTIONAL SERVICES, PLANNING, RESEARCH AND
ACCREDITATION (PRA)

JAMES FOSTER, ADMINISTRATIVE ASSISTANT III
&
BECKI HICKMAN, SR. APPLICATION DEVELOPER- PRA