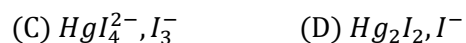


NEET 2017 Solutions

Chemistry

1. $HgCl_2$ and I_2 both when dissolved in water containing I^- ions the pair of species formed is:

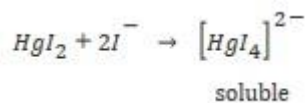
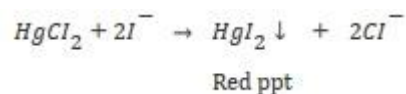


Solution: (C)

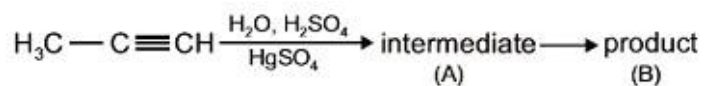
In Solution containing $HgCl_2, I_2$ and I^- , both $HgCl_2$ and I_2 compete for I^- .

Since formation constant of $[HgI_4]^{2-}$ is 1.9×10^{30} which is very large as compared with I_3^- ($K_f = 700$)

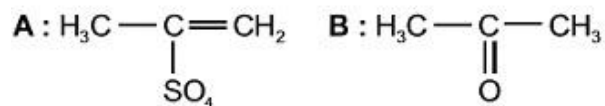
$\therefore I^-$ will preferentially combine with $HgCl_2$.



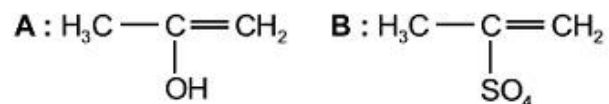
2. Predict the correct intermediate and product in the following reaction



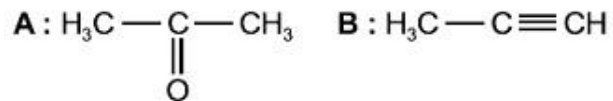
(A)



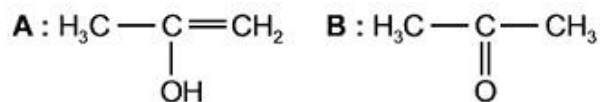
(B)



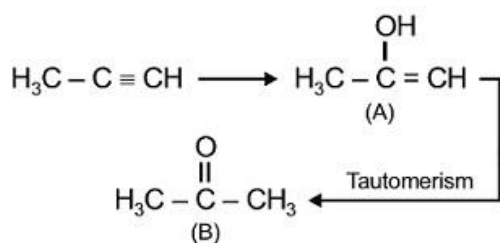
(C)



(D)



Solution: (D)



3. The correct statement regarding electrophile is

- (A) Electrophile is a negatively charged species and can form a bond by accepting a pair of electrons from a nucleophile
- (B) Electrophile is a negatively charged species and can form a bond by accepting a pair of electrons from another electrophile
- (C) Electrophiles are generally neutral species and can form a bond by accepting a pair of electrons from a nucleophile
- (D) Electrophile can be either neutral or positively charged species and can form a bond by accepting a pair of electrons from a nucleophile

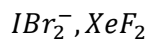
Solution: (D)

Electrophile can be either neutral or positively charged species and can form a bond by accepting a pair of electrons from a nucleophile

4. Which of the following pairs of compounds is isoelectronic and isostructural?

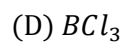
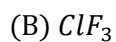
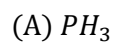
- (A) $\text{BeCl}_2, \text{XeF}_2$
- (B) $\text{TeI}_2, \text{XeF}_2$
- (C) $\text{IBr}_2^-, \text{XeF}_2$
- (D) $\text{IF}_3, \text{XeF}_2$

Solution: (C)

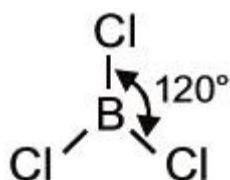


Total number of valence electrons are equal in both the species and both the species are linear also.

5. The species, having bond angles of 120° is



Solution: (D)



6. Which of the following is a sink for CO?

(A) Haemoglobin

(B) Micro-organisms present in the soil

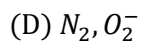
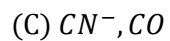
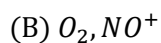
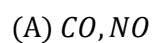
(C) Oceans

(D) Plants

Solution: (B)

Micro-organisms present in the soil is a sink for CO.

7. Which one of the following pairs of species have to same bond order?

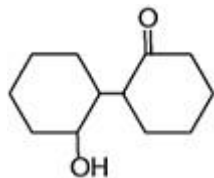


Solution: (C)

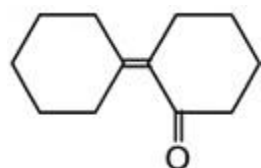
$CN^{(-)}$ and CO have bond order 3 each.

8. Of the following, which is the product formed when cyclohexanone undergoes aldol condensation followed by heating?

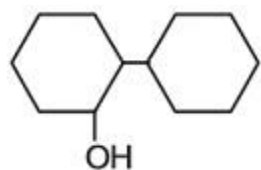
(A)



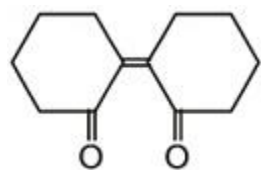
(B)



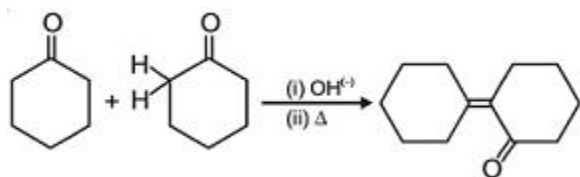
(C)



(D)



Solution: (B)



9. Name the gas that can readily decolorize acidified $KMnO_4$ solution.

(A) CO_2 (B) SO_2 (C) NO_2 (D) P_2O_5

Solution: (B)

SO_2 is readily decolourises acidified $KMnO_4$.

10. Which one is the wrong statement?

(A) de-Broglie's wavelength is given by $\lambda = \frac{h}{mv}$, where m = mass of the particle, v = group velocity of the particle

(B) The uncertainty principle is $\Delta E \times \Delta t \geq \frac{h}{4\pi}$

(C) Half-filled and fully filled orbitals have greater stability due to greater exchange energy, greater symmetry and more balanced arrangement

(D) The energy of 2s orbitals is less than the energy of 2p orbital in case of Hydrogen like atoms

Solution: (D)

Energy of 2s-orbital and 2p-orbital in case of hydrogen like atoms is equal.

11. Correct increasing order for the wavelengths of absorption in the visible region for the complexes of Co^{3+} is:

(A) $[Co(en)_3]^{3+}$, $[Co(NH_3)_6]^{3+}$, $[Co(H_2O)_6]^{3+}$

(B) $[Co(H_2O)_6]^{3+}$, $[Co(en)_3]^{3+}$, $[Co(NH_3)_6]^{3+}$

(C) $[Co(H_2O)_6]^{3+}$, $[Co(NH_3)_6]^{3+}$, $[Co(en)_3]^{3+}$

(D) $[Co(NH_3)_6]^{3+}$, $[Co(en)_3]^{3+}$, $[Co(H_2O)_6]^{3+}$

Solution: (A)

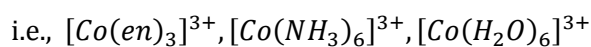
The order of the ligand in the spectrochemical series



Hence, the wavelength of the light observed will be in the order



Thus, wavelength absorbed will be in the opposite order



12. The correct order of the stoichiometry of $AgCl$ formed when $AgNO_3$ in excess is treated with the complexes: $CoCl_3 \cdot 6NH_3$, $CoCl_3 \cdot 5NH_3$, $CoCl_3 \cdot 4NH_3$ respectively is:

- (A) 1 $AgCl$, 3 $AgCl$, 2 $AgCl$
- (B) 3 $AgCl$, 1 $AgCl$, 2 $AgCl$
- (C) 3 $AgCl$, 2 $AgCl$, 1 $AgCl$
- (D) 2 $AgCl$, 3 $AgCl$, 1 $AgCl$

Solution: (C)

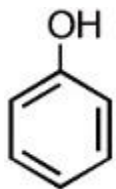
Complexes are respectively $[Co(NH_3)_6]Cl_3$, $[Co(NH_3)_5Cl]Cl_2$ and $[Co(NH_3)_4Cl_2]Cl$

13. Which one is the most acidic compound?

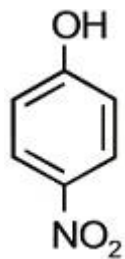
(A)



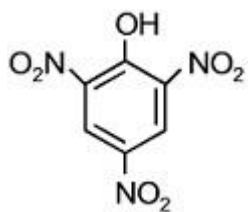
(B)



(C)



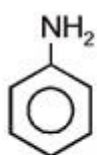
(D)



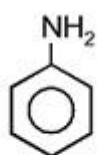
Solution: (D)

$-NO_2$ Group has very strong $-I$ and $-R$ effects.

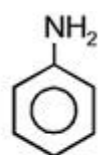
14. The correct increasing order of basic strength for the following compounds is:



(I)



(II)



(III)

(A) $II < III < I$

(B) $III < I < II$

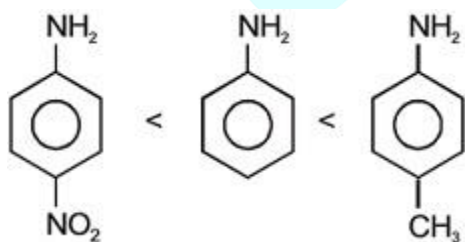
(C) $III < II < I$

(D) $II < I < III$

Solution: (D)

$-NO_2$ Has strong $-R$ effect and $-CH_3$ shows $+R$ effect,

\therefore Order of basic strength is



15. In which pair of ions both the species contain S - S bond?

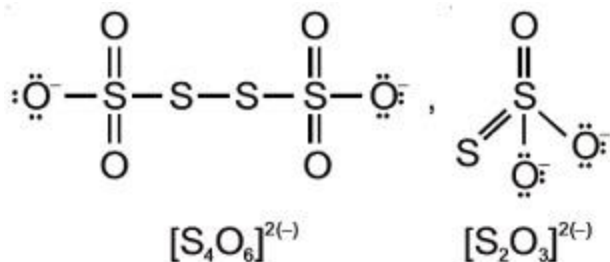
(A) $S_2O_7^{2-}$, $S_2O_3^{2-}$

(B) $S_4O_6^{2-}$, $S_2O_3^{2-}$

(C) $S_2O_7^{2-}$, $S_2O_8^{2-}$

(D) $S_4O_6^{2-}$, $S_2O_7^{2-}$

Solution: (B)



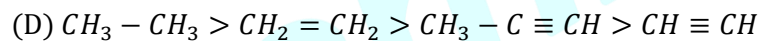
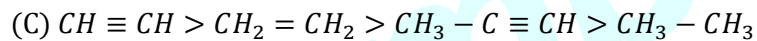
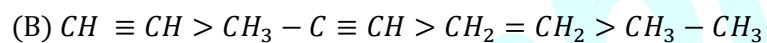
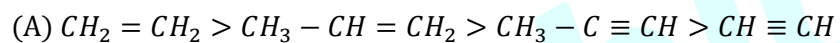
16. Mixture of chloroxylenol and terpineol acts as

- (A) Analgesic (B) Antiseptic (C) Antipyretic (D) Antibiotic

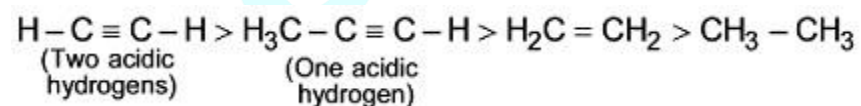
Solution: (B)

Mixture of chloroxylenol and terpineol acts as antiseptic.

17. Which one is the **correct** order of acidity?



Solution: (B)

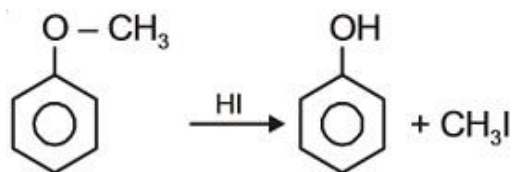


18. The heating of phenyl-methyl ethers with *HI* produces.

- (A) Ethyl chlorides (B) Iodobenzene

- (C) Phenol (D) Benzene

Solution: (C)



19. A gas is allowed to expand in a well-insulated container against a constant external pressure of 2.5 atm from an initial volume of 2.50 L to a final volume of 4.50 L. The change in internal energy ΔU of the gas in joules will be:

- (A) 1136.25 J (B) -500 J (C) -505 J (D) +505 J

Solution: (C)

$$\Delta U = q + w$$

For adiabatic process, $q = 0$

$$\therefore \Delta U = w$$

$$= -P \cdot \Delta V$$

$$= -2.5 \text{ atm} \times (4.5 - 2.5) \text{ L}$$

$$= -2.5 \times 2 \text{ L} - \text{atm}$$

$$= -5 \times 101.3 \text{ J}$$

$$= -506.5 \text{ J}$$

$$\approx -505 \text{ J}$$

20. The most suitable method of separation of 1 : 1 mixture of ortho and para-nitrophenols is:

- (A) Sublimation (B) Chromatography
(C) Crystallisation (D) Steam distillation

Solution: (D)

Steam distillation is the most suitable method of separation of 1 : 1 mixture of ortho and para nitrophenols as there is intramolecular H-bonds in ortho nitrophenol.

21. With respect to the conformers of ethane, which of the following statements is true?

- (A) Bond angle remains same but bond length changes
- (B) Bond angle changes but bond length remains same
- (C) Both bond angle and bond length change
- (D) Both bond angles and bond length remains same

Solution: (D)

There is no change in bond angles and bond lengths in the conformations of ethane. There is only change in dihedral angle.

22. A 20 litre container at 400 K contains $CO_2(g)$ at pressure 0.4 atm and an excess of SrO (neglect the volume of solid SrO). The volume of the container is now decreased by moving the movable piston fitted in the container. The maximum volume of the container, when pressure of CO_2 attains its maximum value, will be:

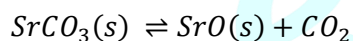
(Given that: $SrCO_3(s) \rightleftharpoons SrO(s) + CO_2(g)$, $K_p = 1.6 \text{ atm}$)

- (A) 5 liter
- (B) 10 liter
- (C) 4 liter
- (D) 2 liter

Solution: (A)

Max. Pressure of CO_2 = Pressure of CO_2 at equilibrium

For reaction,



$$K_p = P_{CO_2} = 1.6 \text{ atm} = \text{maximum pressure of } CO_2$$

Volume of container at this stage,

$$V = \frac{nRT}{P} \quad \dots\dots(i)$$

Since container is sealed and reaction was not earlier at equilibrium

$\therefore n = \text{constant}$

$$n = \frac{PV}{RT} = \frac{0.4 \times 20}{RT} \quad \dots\dots(ii)$$

Put equation (ii) in equation (i)

$$V = \left[\frac{0.4 \times 20}{RT} \right] \frac{RT}{1.6} = 5L$$

23. A first order reaction has a specific reaction rate 10^{-2} sec^{-1} . How much time will it take for 20g the reactant to reduce to 5g?

- (A) 238.6 second (B) 138.6 second (C) 346.5 second (D) 693.0 second

Solution: (B)

$$t_{\frac{1}{2}} = \frac{0.693}{10^{-2}} \text{ second}$$

For the reduction of 20 g of reactant to 5g, two $t_{\frac{1}{2}}$ is required.

$$\therefore t = 2 \times \frac{0.693}{10^{-2}} \text{ second}$$

$$= 138.6 \text{ second}$$

24. For a given reaction, $\Delta H = 35.5 \text{ kJ mol}^{-1}$ and $\Delta S = 83.6 \text{ JK}^{-1}\text{mol}^{-1}$. The reaction is spontaneous at : (Assume that ΔH and ΔS do not vary with temperature)

- (A) $T > 425 \text{ K}$ (B) $T > 425 \text{ K}$ (C) All temperatures (D) $T > 298 \text{ K}$

Solution: (B)

$$\therefore \Delta G = \Delta H - T\Delta S$$

For a reaction to be spontaneous, $\Delta G = -ve$

$$\text{i.e., } \Delta H < T\Delta S$$

$$\therefore T > \frac{\Delta H}{\Delta S} = \frac{35.5 \times 10^3 \text{ J}}{83.6 \text{ JK}^{-1}}$$

$$\text{i.e., } T > 425 \text{ K}$$

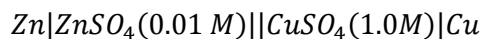
25. In the electrochemical cell:

$\text{Zn}|\text{ZnSO}_4(0.01\text{M})||\text{CuSO}_4(1.0\text{M})|\text{Cu}$, The emf this Daniel cell is E_1 . When the concentration ZnSO_4 is changed to 1.0M and that of CuSO changed to 0.01M , the emf changes to E_2 . From the following, which one is the relationship between E_1 and E_2 ? (Given, $\frac{RT}{F} = 0.059$)

- (A) $E_1 = E_2$ (B) $E_1 < E_2$

(C) $E_1 > E_2$ (D) $E_2 = 0 \neq E_1$

Solution: (C)



$$\therefore E_1 = E_{cell}^{\circ} - \frac{2.303RT}{2 \times F} \times \log \frac{(0.01)}{1}$$

When concentrations are changed

$$\therefore E_2 = E_{cell}^{\circ} - \frac{2.303RT}{2F} \times \log \frac{1}{0.01}$$

i.e., $E_1 > E_2$

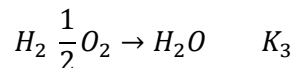
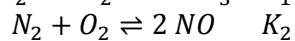
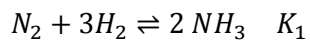
26. An example of a sigma bonded organometallic compound is:

- (A) Ruthenocene
- (B) Grignard's reagent
- (C) Ferrocene
- (D) Cobaltocene

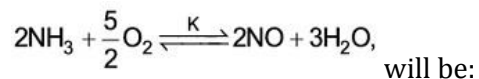
Solution: (B)

Grignard's reagent i.e., RMgX is σ -bonded organometallic compound.

27. The equilibrium constants of the following are:

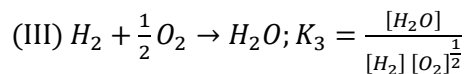
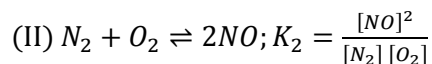


The equilibrium constant (K) of the reaction:

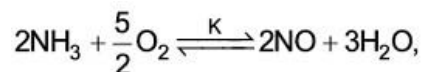


- (A) $\frac{K_1 K_3^3}{K_2}$ (B) $\frac{K_2 K_3^3}{K_1}$ (C) $\frac{K_2 K_3}{K_1}$ (D) $\frac{K_2^3 K_3}{K_1}$

Solution: (B)

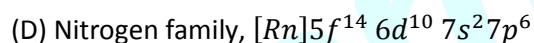
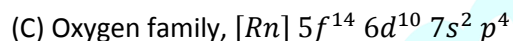
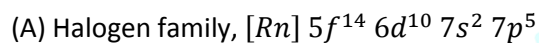


(II + 3 × III – I) will give



$$\therefore K = K_2 \times \frac{K_3^3}{K_1}$$

28. The element Z = 114 has been discovered recently. It will belong to which of the following family/group and electronic configuration?



Solution: (B)

Z = 114 belong to group 14, carbon family

Electronic configuration = $[Rn] 5f^{14} 6d^{10} 7s^2 7p^2$

29. Pick out the correct statement with respect to $[Mn(CN_3)]^{3-}$:

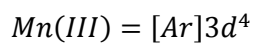
(A) It is sp^3d^2 hybridised and octahedral

(B) It is sp^3d^2 hybridised and tetrahedral

(C) It is d^2sp^3 hybridised and octahedral

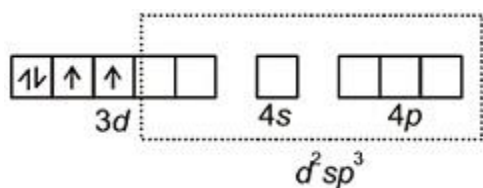
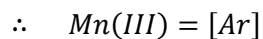
(D) It is dsp^2 hybridised and square planar

Solution: (C)



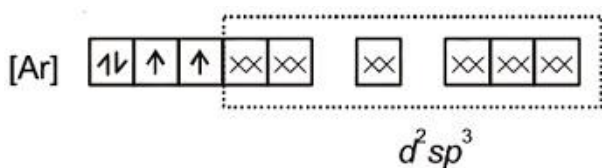
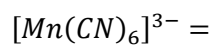
CN^- Being strong field ligand forces pairing of electrons

This gives $t_{2g}^4 e_g^0$



\therefore Coordination number of Mn = 6

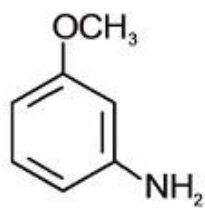
\therefore Structure = octahedral



30. Identify A and predict the type of reaction

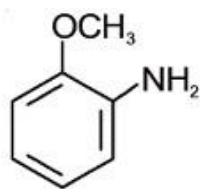


(A)



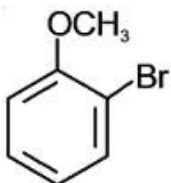
and elimination addition

(B)



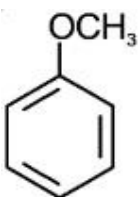
and cine substitution reaction

(C)



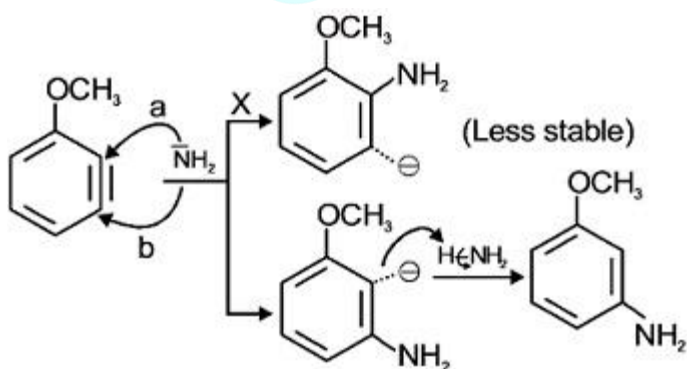
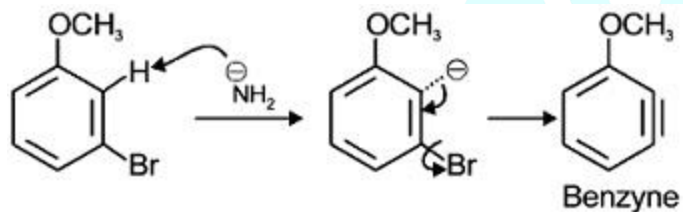
and cine substitution reaction

(D)



and substitution reaction

Solution: (A)



More stable as $-ve$ charge is close to electron withdrawing group

\therefore Incoming nucleophile ends on same 'C' on which 'Br' (Leaving group) was present

\therefore NOT cine substitution.

31. It is because of inability of ns^2 electrons of the valence shell to participate in bonding that:

- (A) Sn^{2+} is reducing while Pb^{4+} is oxidizing
- (B) Sn^{2+} is oxidizing while Pb^{4+} is reducing
- (C) Sn^{2+} and Pb^{2+} are both oxidizing and reducing
- (D) n^{4+} is reducing while Pb^{4+} is oxidizing

Solution: (A)

Inability of ns^2 electrons of the valence shell to participate in bonding on moving down the group in heavier p-block elements is called **inert pair effect**

As a result, Pb(II) is more stable than Pb(IV)

Sn(IV) is more stable than Sn(II)

∴ Pb(IV) is easily reduced to Pb(II)

∴ Pb(IV) is oxidizing agent

Sn(II) is easily oxidized to Sn(IV)

∴ Sn(II) is reducing agent

32. Which of the following statements is not correct?

- (A) Insulin maintains sugar level in the blood of a human body
- (B) Ovalbumin is a simple food reserve in egg-white
- (C) Blood proteins thrombin and fibrinogen are involved in blood clotting
- (D) Denaturation makes the proteins more active

Solution: (D)

Due to denaturation of proteins, globules unfold and helix get uncoiled and protein loses its biological activity.

33. Which is the incorrect statement?

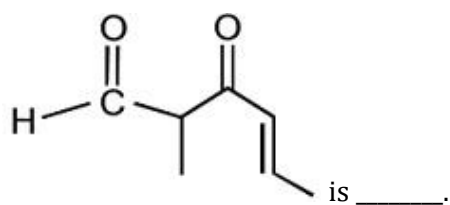
- (A) $FeO_{0.98}$ has non stoichiometric metal deficiency defect
- (B) Density decreases in case of crystals with schottky's defect
- (C) $NaCl(s)$ is insulator, silicon is semiconductor, silver is conductor, quartz is piezo electric crystal
- (D) Frenkel defect is favoured in those ionic compounds in which sizes of cation and anions are almost equal

Solution: (A, D)

Frenkel defect occurs in those ionic compounds in which size of cation and anion is largely different.

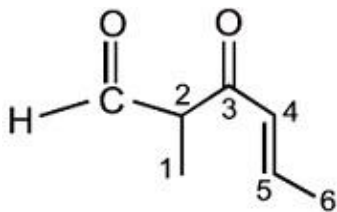
Non-stoichiometric ferrous oxide is $Fe_{0.93-0.96}O_{1.00}$ and it is due to metal deficiency defect.

34. The IUPAC name of the compound



- (A) 3-keto-2-methylhex-4-enal
- (B) 5-formylhex-2-en-3-one
- (C) 5-methyl-4-oxohex-2-en-5-al
- (D) 3-keto-2-methylhex-5-enal

Solution: (A)



Aldehydes get higher priority over ketone and alkene in numbering of principal C-chain.

\therefore 3-keto-2-methylhex-4-enal

35. The reason for greater range of oxidation states in actinoids is attributed to:

- (A) The radioactive nature of actinoids
- (B) Actinoid contraction
- (C) 5f, 6d and 7s levels having comparable energies
- (D) 4f and 5d levels being close in energies

Solution: (C)

It is a fact.

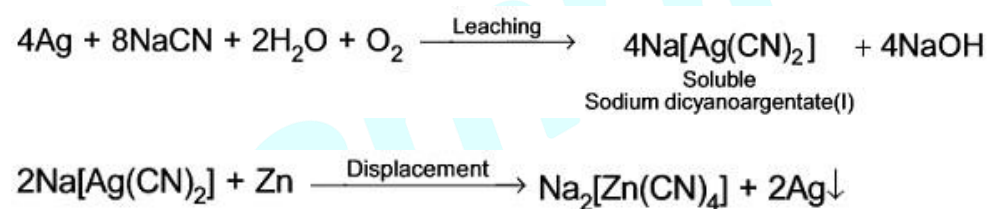
36. Extraction of gold and silver involves leaching with CN^- ion. Silver is later recovered by:

- (A) Liquation
- (B) Distillation
- (C) Zone refining
- (D) Displacement with Zn

Solution: (D)

Zn being more reactive than Ag and Au, displaces them.

From Native ore,



37. Ionic mobility of which of the following alkali metal ions is lowest when aqueous solution of their salt are put under an electric field?

- (A) Na
- (B) K
- (C) Rb
- (D) Li

Solution: (D)

Li^+ being smallest, has maximum charge density

$\therefore Li^+$ is most heavily hydrated among all alkali metal ions. Effective size of Li^+ in aq solution is therefore, largest.

\therefore Moves slowest under electric field.

38. Which of the following is dependent on temperature?

- (A) Molality
- (B) Molarity
- (C) Mole fraction
- (D) Weight percentage

Solution: (B)

Molarity includes volume of solution which can change with change in temperature.

39. If molality of the dilute solution is doubled, the value of molal depression constant (K_f) will be:

- (A) Doubled
- (B) Halved
- (C) Tripled
- (D) Unchanged

Solution: (D)

K_f (Molal depression constant) is a characteristic of solvent and is independent of molality.

40. Mechanism of a hypothetical reaction $X_2 + Y_2 \rightarrow 2XY$ is given below:

- (i) $X_2 \rightarrow X + X$ (fast)
- (ii) $X + Y_2 \rightleftharpoons XY + Y$ (slow)
- (iii) $X + Y \rightarrow XY$ (fast)

The overall order of the reaction will be:

- (A) 1
- (B) 2
- (C) 0
- (D) 1.5

Solution: (D)

The solution of this question is given by assuming step (i) to be reversible which is not given in question

Overall rate = Rate of slowest step (ii)

$$= k[X][Y_2] \quad \dots(i)$$

K = rate constant of step (ii)

Assuming step (i) to be reversible, its equilibrium constant,

$$k_{eq} = \frac{[X]^2}{[X_2]} \Rightarrow [X] = k_{eq}^{\frac{1}{2}} [X_2]^{\frac{1}{2}} \quad \dots(ii)$$

Put (ii) in (i)

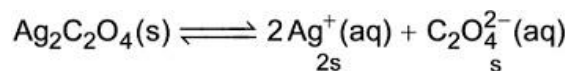
$$\text{Rate} = k k_{eq}^{\frac{1}{2}} [X_2]^{\frac{1}{2}} [Y_2]$$

$$\text{Overall order} = \frac{1}{2} + 1 = \frac{3}{2}$$

41. Concentration of the Ag^+ ions in a saturated solution of $Ag_2C_2O_4$ is $2.2 \times 10^{-4} \text{ mol L}^{-1}$. Solubility product of $Ag_2C_2O_4$ is:

- (A) 2.42×10^{-8} (B) 2.66×10^{-12}
 (C) 4.5×10^{-11} (D) 5.3×10^{-12}

Solution: (D)



$$K_{sp} = [Ag^+]^2 [C_2O_4^{2-}]$$

$$[Ag^+] = 2.2 \times 10^{-4} M$$

$$\therefore [C_2O_4^{2-}] = \frac{2.2 \times 10^{-4}}{2} M = 1.1 \times 10^{-4} M$$

$$\therefore K_{SP} = (2.2 \times 10^{-4})^2 (1.1 \times 10^{-4})$$

$$= 5.324 \times 10^{-12}$$

42. Match the interhalogen compounds of column I with the geometry in column II and assign the correct code.

Column I	Column II
a. XX'	(i) T-shape
b. XX'_3	(ii) Pentagonal bipyramidal
c. XX'_5	(iii) Linear
d. XX'_7	(iv) Square - pyramidal
	(v) Tetrahedral

- (A) a b c d
 (iii) (iv) (i) (ii)

(B) a b c d
(iii) (i) (iv) (ii)

(C) a b c d
(v) (iv) (iii) (ii)

(D) a b c d
(iv) (iii) (ii) (i)

Solution: (B)

$XX' \rightarrow$ Linear

$XX'_3 \rightarrow$ Example : $ClF_3 \rightarrow T$ - shape

$XX'_5 \rightarrow$ Example : $BrF_5 \rightarrow$ Square pyramidal

$XX'_7 \rightarrow$ Example : $IF_7 \rightarrow$ Pentagonal bipyramidal

43. Which one of the following statements is not correct?

(A) Catalyst does not initiate any reaction

(B) The value of equilibrium constant is changed in the presence of a catalyst in the reaction at equilibrium

(C) Enzymes catalyse mainly bio-chemical reactions

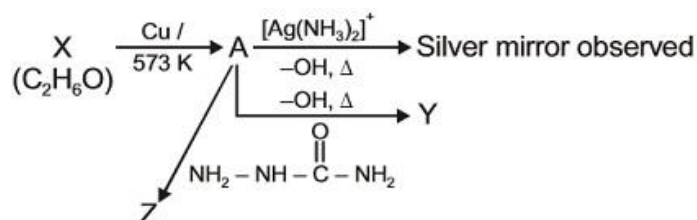
(B) Coenzymes increase the catalytic activity of enzyme

Solution: (B)

A catalyst decreases activation energies of both the forward and backward reaction by same amount, therefore, it speeds up both forward and backward reaction by same rate.

Equilibrium constant is therefore not affected by catalyst at a given temperature.

44. Consider the reactions:



Identify A, X, Y and Z

- (A) A-Methoxyymethane, X-Ethanoic acid , Y-Acetate ion, Z-hydrazine
 (B) A-Methoxymethane, X-Ethanol, Y-Ethanoic acid, Z-Semicarbazide
 (C) A-Ethanal, X-Ethanol, Y-But-2-enal, Z-Semicarbazone
 (D) A-Ethanol, X-Acetaldehyde, Y-Butanone, Z-Hydrazone

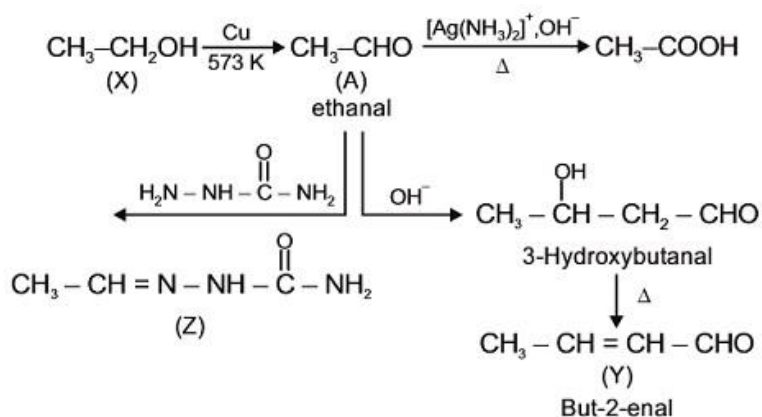
Solution: (C)

Since 'A' gives positive silver mirror test therefore, it must be an aldehyde or α -Hydroxyketone.

Reaction with semicarbazide indicates that A can be an aldehyde or ketone.

Reaction with OH^- i.e., aldol condensation (by assuming alkali to be dilute) indicates that A is aldehyde as aldol reaction of ketones is reversible and carried out in special apparatus.

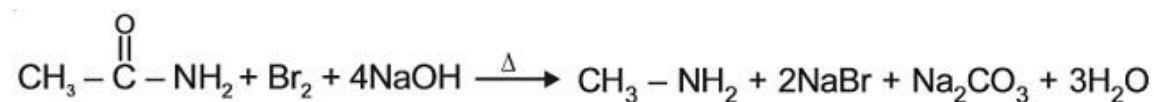
These indicates option (iii).



45. Which of the following reaction is appropriate for converting acetamide to methanamine?

- (A) Carbylamine reaction
 (B) Hoffmann hypobromamide reaction
 (C) Stephens reaction
 (D) Gabriels phthalimide synthesis

Solution: (B)



This is Hoffmann Bromamide reaction.

Biology

46. Which of the following in sewage treatment removes suspended solids?

- (A) Tertiary treatment (B) Secondary treatment
(C) Primary treatment (D) Sludge treatment

Solution: (C)

Primary treatment is a physical process which involves sequential filtration and sedimentation.

47. Which one of the following is related to Ex-situ conservation of threatened animals and plants?

- (A) Wildlife Safari parks (B) Biodiversity hot spots
(C) Amazon rainforest (D) Himalayan region

Solution: (A)

Ex. Situ conservation is offsite strategy for conservation of animals and plants in zoological park and botanical gardens respectively.

48. Phosphonol pyruvate (PEP) is the primary CO_2 acceptor in:

- (A) C_3 plants (B) C_4 plants
(C) C_2 plants (D) C_3 and C_4 plants

Solution: (B)

PEP is 3C compound which serves as primary CO_2 acceptor in the mesophyll cell cytoplasm of C_4 plants like maize, sugarcane, *Sorghum* etc.

49. Which one of the following statements is not valid for aerosols?

- (A) They are harmful to human health
(B) They alter rainfall and monsoon patterns
(C) They cause increased agricultural productivity

(D) They have negative impact on agricultural land

Solution: (C)

Aerosols can cause various problems to agriculture through its direct or indirect effects on plants. However continually increasing air pollution may represent a persistent and largely irreversible threat to agriculture in the future.

50. In case of poriferans the spongocoel is lined with flagellated cells called

(A) Ostia (B) Oscula

(C) Choanocytes (D) Mesenchymal cells

Solution: (C)

Choanocytes (collar cells) form lining of spongocoel in poriferans (sponges). Flagella in collar cells provide circulation to water in water canal system.

51. Which cells of 'Crypts of Lieberkuhn' secrete antibacterial lysozyme?

(A) Argentaffin cells (B) Paneth cells

(C) Zymogen cells (D) Kupffer cells

Solution: (B)

– Kupffer-cells are phagocytic cells of liver.

– Zymogen cells are enzyme producing cells.

– Paneth cell secretes lysozyme which acts as anti-bacterial agent.

– Argentaffin cells are hormone producing cells.

52. Lungs are made up of air-filled sacs the alveoli. They do not collapse even after forceful expiration, because of :

(A) Residual Volume

(B) Inspiratory Reserve Volume

(C) Tidal Volume

(D) Expiratory Reserve Volume

Solution: (A)

Volume of air present in lungs after forceful expiration as residual volume which prevents the collapsing of alveoli even after forceful expiration.

53. Viroids differ from viruses in having :

- (A) DNA molecules with protein coat
- (B) DNA molecules without protein coat
- (C) RNA molecules with protein coat
- (D) RNA molecules without protein coat

Solution: (D)

Viroids are sub-viral agents as infectious RNA particles, without protein coat.

54. Which of the following are not polymeric?

- (A) Nucleic acids
- (B) Proteins
- (C) Polysaccharides
- (D) Lipids

Solution: (D)

– Nucleic acids are polymers of nucleotides

– Proteins are polymers of amino acids

– Polysaccharides are polymers of monosaccharides

– Lipids are the esters of fatty acids and alcohol

55. Select the mismatch :

- (A) *Pinus* – *Dioecious*
- (B) *Cycas* – *Dioecious*
- (C) *Salvinia* – *Heterosporous*
- (D) *Equisetum* – *Homosporous*

Solution: (A)

Pinus is monoecious plant having both male and female cones on same plant.

56. A gene whose expression helps to identify transformed cell is known as

- (A) Selectable marker (B) Vector (C) Plasmid (D) Structural gene

Solution: (A)

In recombinant DNA technology, selectable markers helps in identifying and eliminating non transformants and selectively permitting the growth of the transformants.

57. A decrease in blood pressure/volume will not cause the release of

- (A) Renin (B) Atrial Natriuretic Factor (C) Aldosterone (D) ADH

Solution: (B)

A decrease in blood pressure/volume stimulates the release of renin, aldosterone, and ADH while increase in blood pressure/volume stimulates the release of Atrial Natriuretic Factor (ANF) which cause vasodilation and also inhibits RAAS (Renin Angiotensin Aldosterone System) mechanism that decreases the blood volume/pressure.

58. In *Bougainvillea* thorns are the modifications of

- (A) Stipules (B) Adventitious root
(C) Stem (D) Leaf

Solution: (C)

Thorns are hard, pointed straight structures for protection. These are modified stem.

59. An important characteristic that Hemichordates share with Chordates is

- (A) Absence of notochord
(B) Ventral tubular nerve cord
(C) Pharynx with gill slits

(D) Pharynx without gill slits

Solution: (C)

Pharyngeal gill slits are present in hemichordates as well as in chordates. Notochord is present in chordates only. Ventral tubular nerve cord is characteristic feature of nonchordates.

60. Which of the following facilitates opening of stomatal aperture?

(A) Contraction of outer wall of guard cells

(B) Decrease in turgidity of guard cells

(C) Radial orientation of cellulose microfibrils in the cell wall of guard cells

(D) Longitudinal orientation of cellulose microfibrils in the cell wall of guard cells

Solution: (C)

Cellulose microfibrils are oriented radially rather than longitudinally which makes easy for the stoma to open.

61. Which of the following statements is correct?

(A) The ascending limb of loop of Henle is impermeable to water

(B) The descending limb of loop of Henle is impermeable to water

(C) The ascending limb of loop of Henle is permeable to water

(D) The descending limb of loop of Henle is permeable to electrolytes

Solution: (A)

Descending limb of loop of Henle is permeable to water but impermeable to electrolytes while ascending limb is impermeable to water but permeable to electrolytes.

62. Which of the following are found in extreme saline conditions?

(A) Archaeobacteria

(B) Eubacteria

(C) Cyanobacteria

(D) Mycobacteria

Solution: (A)

Archaeobacteria are able to survive in harsh conditions because of branched lipid chain in cell membrane which reduces fluidity of cell membrane.

63. The morphological nature of the edible part of coconut is

(A) Perisperm (B) Cotyledon

(C) Endosperm (D) Pericarp

Solution: (C)

Coconut has double endosperm with liquid endosperm and cellular endosperm.

64. Identify the wrong statement in context of heartwood.

(A) Organic compounds are deposited in it

(B) It is highly durable

(C) It conducts water and minerals efficiently

(D) It comprises dead elements with highly lignified walls

Solution: (C)

Heartwood is physiologically inactive due to deposition of organic compounds and tyloses formation, so this will not conduct water and minerals.

65. If there are 999 bases in an RNA that codes for a protein with 333 amino acids, and the base at position 901 is deleted such that the length of the RNA becomes 998 bases, how many codons will be altered?

(A) 1

(B) 11

(C) 33

(D) 333

Solution: (C)

If deletion occurs at 901st position the remaining 98 bases specifying for 33 codons of amino acids will be altered.

66. The region of Biosphere Reserve which is legally protected and where no human activity is allowed is known as :

- (A) Core zone (B) Buffer zone
(C) Transition zone (D) Restoration zone

Solution: (A)

Biosphere reserve is protected area with multipurpose activities.

It has three zones

- (i) Core zone – without any human interference
(ii) Buffer zone – with limited human activity
(iii) Transition zone – human settlement, grazing cultivation etc. are allowed.

67. A dioecious flowering plant prevents both:

- (A) Autogamy and xenogamy
(B) Autogamy and geitonogamy
(C) Geitonogamy and xenogamy
(D) Cleistogamy and xenogamy

Solution: (B)

When unisexual male and female flowers are present on different plants the condition is called dioecious and it prevents both autogamy and geitonogamy.

68. Which statement is wrong for Krebs' cycle?

- (A) There are three points in the cycle where NAD^+ is reduced to $NADH + H^+$
(B) There is one point in the cycle where FAD^+ is reduced to $FADH_2$
(C) During conversion of succinyl CoA to succinic acid, a molecule of GTP is synthesised
(D) The cycle starts with condensation of acetyl group (acetyl CoA) with pyruvic acid to yield citric acid

Solution: (D)

Kreb cycle starts with condensation of acetyl CoA (2C) with oxaloacetic acid (4C) to form citric acid (6C).

69. Which among these is the correct combination of aquatic mammals?

(A) Seals, Dolphins, Sharks

(B) Dolphins, Seals, Trygon

(C) Whales, Dolphins Seals

(D) Trygon, Whales, Seals

Solution: (C)

Sharks and *Trygon* (sting ray) are the members of chondrichthyes (cartilaginous fish) while whale, dolphin and seals are aquatic mammals belong to class mammalia.

70. The hepatic portal vein drains blood to liver from

(1) Heart (B) Stomach

(C) Kidneys (D) Intestine

Solution: (D)

In hepatic portal system, hepatic portal vein carries maximum amount of nutrients from intestine to liver.

71. Functional megaspore in an angiosperm develops into:

(A) Ovule (B) Endosperm

(C) Embryo sac (D) Embryo

Solution: (C)

Megaspore is the first cell of female gametophytic generation in angiosperm. It undergoes three successive generations of free nuclear mitosis to form 8-nucleated and 7-celled embryo sac.

72. Mycorrhizae are the example of:

(A) Fungistasis (B) Amensalism

(C) Antibiosis (D) Mutualism

Solution: (D)

Mycorrhizae is a symbiotic association of fungi with roots of higher plants.

73. Transplantation of tissues/organs fails often due to non-acceptance by the patient's body. Which type of immune-response is responsible for such rejections?

(A) Autoimmune response

(B) Cell-mediated immune response

(C) Hormonal immune response

(D) Physiological immune response

Solution: (B)

Non acceptance or rejection of graft or transplanted tissues/organs is due to cell mediated immune response.

74. Adult human RBCs are enucleate. Which of the following statement(s) is/are most appropriate explanation for this feature?

(i) They do not need to reproduce

(ii) They are somatic cells

(iii) They do not metabolize

(iv) All their internal space is available for oxygen transport

(A) Only (iv) (B) Only (i)

(C) (i), (iii) and (iv) (D) (ii) and (iii)

Solution: (A)

In Human RBCs, nucleus degenerates during maturation which provide more space for oxygen carrying pigment (Haemoglobin). It lacks most of the cell organelles including mitochondria so respire anaerobically.

75. Alexander Von Humboldt described for the first time:

- (A) Ecological Biodiversity
- (B) Laws of limiting factor
- (C) Species area relationships
- (D) Population Growth equation

Solution: (C)

Alexander Von Humboldt observed that within a region species richness increases with the increases in area.

76. Attractants and rewards are required for:

- (A) Anemophily (B) Entomophily
- (C) Hydrophily (D) Cleistogamy

Solution: (B)

Insect pollinated plants provide rewards as edible pollen grain and nectar as usual rewards. While some plants also provide safe place for deposition of eggs.

77. Which one of the following statements is **correct**, with reference to enzymes?

- (A) Apoenzyme = Holoenzyme + Coenzyme
- (B) Holoenzyme = Apoenzyme + Coenzyme
- (C) Coenzyme = Apoenzyme + Holoenzyme
- (D) Holoenzyme = Coenzyme + Co-factor

Solution: (B)

Holoenzyme is conjugated enzyme in which protein part is apoenzyme while non-protein is cofactor.

Coenzyme are also organic compounds but their association with apoenzyme is only transient and serve as cofactors.

78. An example of colonial alga is

- (A) Chlorella (B) Volvox
(C) Ulothrix (D) Spirogyra

Solution: (B)

Volvox is motile colonial fresh water alga with definite number of vegetative cells.

79. A disease caused by an autosomal primary non-disjunction is

- (A) Down's syndrome
(B) Klinefelter's syndrome
(C) Turner's syndrome
(D) Sickle cell anemia

Solution: (A)

Down's syndrome is caused by non-disjunction of 21st chromosome.

80. DNA fragments are

- (A) Positively charged
(B) Negatively charged
(C) Neutral
(D) Either positively or negatively charged depending on their size

Solution: (B)

DNA fragments are negatively charged because of phosphate group.

81. The pivot joint between atlas and axis is a type of

- (A) Fibrous joint
(B) Cartilaginous joint
(C) Synovial joint

(D) Saddle joint

Solution: (C)

Synovial joints are freely movable joint which allow considerable movements. Pivot joint is a type of synovial joint which provide rotational movement as in between atlas and axis vertebrae of vertebral column.

82. Asymptote in a logistic growth curve is obtained when

(A) The value of 'r' approaches zero

(B) $K = N$

(C) $K > N$

(D) $K < N$

Solution: (B)

A population growing in a habitat with limited resources shows logistic growth curve.

For logistic growth

$$\frac{dN}{dt} = rN \left(\frac{K - N}{K} \right)$$

If $K = N$ then $\frac{K - N}{K} = 0$

∴ the $\frac{dN}{dt} = 0$, the population reaches asymptote.

83. Myelin sheath is produced by

(A) Schwann Cells and Oligodendrocytes

(B) Astrocytes and Schwann Cells

(C) Oligodendrocytes and Osteoclasts

(D) Osteoclasts and Astrocytes

Solution: (A)

Oligodendrocytes are neuroglial cells which produce myelin sheath in central nervous system while Schwann cell produces myelin sheath in peripheral nervous system.

84. The process of separation and purification of expressed protein before marketing is called

- (A) Upstream processing
- (B) Downstream processing
- (C) Bioprocessing
- (D) Postproduction processing

Solution: (B)

Biosynthetic stage for synthesis of product in recombinant DNA technology is called upstreaming process while after completion of biosynthetic stage, the product has to be subjected through a series of processes which include separation and purification are collectively referred to as downstream processing.

85. GnRH, a hypothalamic hormone, needed in reproduction, acts on

- (A) Anterior pituitary gland and stimulates secretion of LH and oxytocin
- (B) Anterior pituitary gland and stimulates secretion of LH and FSH
- (C) Posterior pituitary gland and stimulates secretion of oxytocin and FSH
- (D) Posterior pituitary gland and stimulates secretion of LH and relaxin

Solution: (B)

Hypothalamus secretes GnRH which stimulates anterior pituitary gland for the secretion of gonadotropins (FSH and LH).

86. Hypersecretion of Growth Hormone in adults does not cause further increase in height, because

- (A) Growth Hormone becomes inactive in adults
- (B) Epiphyseal plates close after adolescence
- (C) Bones lose their sensitivity to Growth Hormone in adults
- (D) Muscle fibres do not grow in size after birth

Solution: (B)

Epiphyseal plate is responsible for the growth of bone which close after adolescence so hypersecretion of growth hormone in adults does not cause further increase in height.

87. Which ecosystem has the maximum biomass?

- (A) Forest ecosystem (B) Grassland ecosystem
(C) Pond ecosystem (D) Lake ecosystem

Solution: (A)

High productive ecosystem are

- Tropical rain forest
- Coral reef
- Estuaries
- Sugarcane fields

88. Fruit and leaf drop at early stages can be prevented by the application of

- (A) Cytokinins (B) Ethylene
(C) Auxins (D) Gibberellic acid

Solution: (C)

Auxins prevent premature leaf and fruit fall.

NAA prevents fruit drop in tomato; 2,4-D prevents fruit drop in *Citrus*.

89. The final proof for DNA as the genetic material came from the experiments of

- (A) Griffith
(B) Hershey and Chase
(C) Avery, Mcleod and McCarty
(D) Hargobind Khorana

Solution: (B)

Hershey and Chase gave unequivocal proof which ended the debate between protein and DNA as genetic material.

90. Which of the following represents order of 'Horse'?

(A) Equidae (B) Perissodactyla

(C) Caballus (D) Ferus

Solution: (B)

Horse belongs to order perissodactyla of class mammalia. Perissodactyla includes odd-toed mammals.

91. Out of 'X' pairs of ribs in humans only 'Y' pairs are true ribs. Select the option that correctly represents values of X and Y and provides their explanation:

(A)

$X = 12, Y = 7$	True ribs are attached dorsally to vertebral column and ventrally to the sternum
-----------------	--

(B)

$X = 12, Y = 5$	True ribs are attached dorsally to vertebral column and sternum on the two ends
-----------------	---

(C)

$X = 24, Y = 7$	True ribs are dorsally attached to vertebral column but are free on ventral side
-----------------	--

(D)

$X = 24, Y = 12$	True ribs are dorsally attached to vertebral column but are free on ventral side
------------------	--

Solution: (A)

In human, 12 pairs of ribs are present in which 7 pairs of ribs (1st to 7th pairs) are attached dorsally to vertebral column and ventrally to the sternum.

92. Match the following sexually transmitted diseases (Column - I) with their causative agent (Column - II) and select the correct option.

Column – I	Column – II
(a) Gonorrhoea	(i) HIV
(b) Syphilis	(ii) Neisseria
(c) Genital Warts	(iii) Treponema
(d) AIDS	(iv) Human Papilloma-Virus

- (A) (a) (b) (c) (d)
(ii) (iii) (iv) (i)
- (B) (a) (b) (c) (d)
(iii) (iv) (i) (ii)
- (C) (a) (b) (c) (d)
(iv) (ii) (iii) (i)
- (D) (a) (b) (c) (d)
(iv) (iii) (ii) (i)

Solution: (A)

Gonorrhoea – *Neisseria* (Bacteria)

Syphilis – *Treponema* (Bacteria)

Genital Warts – *Human papilloma virus* (Virus)

AIDS – HIV (Virus)

93. Thalassaemia and sickle cell anemia are caused due to a problem in globin molecule synthesis. Select the correct statement.

- (A) Both are due to a qualitative defect in globin chain synthesis
- (B) Both are due to a quantitative defect in globin chain synthesis
- (C) Thalassaemia is due to less synthesis of globin molecules
- (D) Sickle cell anemia is due to a quantitative problem of globin molecules

Solution: (C)

Thalassemia differs from sickle-cell anaemia in that the former is a quantitative problem of synthesising too few globin molecules while the latter is a qualitative problem of synthesising an incorrectly functioning globin.

94. Which of the following is made up of dead cells?

(A) Xylem parenchyma (B) Collenchyma

(C) Phellem (D) Phloem

Solution: (C)

Cork cambium undergoes periclinal division and cuts off thick walled suberised dead cork cells towards outside and it cuts off thin walled living cells i.e., phelloderm on inner side.

95. A baby boy aged two years is admitted to play school and passes through a dental check-up. The dentist observed that the boy had twenty teeth. Which teeth were absent?

(A) Incisors (B) Canines

(C) Pre-molars (D) Molars

Solution: (C)

Total number of teeth in human child = 20. Premolars are absent in primary dentition.

96. Which of the following cell organelles is responsible for extracting energy from carbohydrates to form ATP?

(A) Lysosome (B) Ribosome

(C) Chloroplast (D) Mitochondrion

Solution: (D)

Mitochondria are the site of aerobic oxidation of carbohydrates to generate ATP.

97. Capacitation occurs in

- (A) Rete testis
- (B) Epididymis
- (C) Vas deferens
- (D) Female Reproductive tract

Solution: (D)

Capacitation is increase in fertilizing capacity of sperms which occurs in female reproductive tract.

98. The association of histone H1 with a nucleosome indicates:

- (A) Transcription is occurring
- (B) DNA replication is occurring
- (C) The DNA is condensed into a Chromatin Fibre
- (D) The DNA double helix is exposed

Solution: (C)

The association of H1 protein indicates the complete formation of nucleosome.

99. With reference to factors affecting the rate of photosynthesis, which of the following statements is not correct?

- (1) Light saturation for CO_2 fixation occurs at 10% of full sunlight
- (2) Increasing atmospheric CO_2 concentration upto 0.05% can enhance CO_2 fixation rate
- (3) C_3 plants responds to higher temperatures with enhanced photosynthesis while C_4 plants have much lower temperature optimum
- (4) Tomato is a greenhouse crop which can be grown in CO_2 - enriched atmosphere for higher yield

Solution: (C)

In C_3 plants photosynthesis is decreased at higher temperature due to increased photorespiration. C_4 plants have higher temperature optimum because of the presence of pyruvate phosphate dikinase enzyme, which is sensitive to low temperature.

100. Homozygous purelines in cattle can be obtained by:

- (A) mating of related individuals of same breed
- (B) mating of unrelated individuals of same breed
- (C) mating of individuals of different breed
- (D) mating of individuals of different species

Solution: (A)

Inbreeding results in increase in the homozygosity. Therefore, mating of the related individuals of same breed will increase homozygosity.

101. Which of the following options gives the correct sequence of events during mitosis?

- (A) condensation → nuclear membrane disassembly → crossing over → segregation → telophase
- (B) condensation → nuclear membrane disassembly → arrangement at equator → centromere division → segregation → telophase
- (C) condensation → crossing over → nuclear membrane disassembly → segregation → telophase
- (D) condensation → arrangement at equator → centromere division → segregation → telophase

Solution: (B)

The correct sequence of events during mitosis would be as follows

- (i) Condensation of DNA so that chromosomes become visible occurs during early to mid-prophase.
- (ii) Nuclear membrane disassembly begins at late prophase or transition to metaphase.
- (iii) Arrangement of chromosomes at equator occurs during metaphase, called congression.
- (iv) Centromere division or splitting occurs during anaphase forming daughter chromosomes.
- (v) Segregation also occurs during anaphase as daughter chromosomes separate and move to opposite poles.
- (vi) Telophase leads to formation of two daughter nuclei.

102. Select the **correct** route for the passage of sperms in male frogs:

- (A) Testes → Bidder's canal → Kidney → Vasa efferentia → Urinogenital duct → Cloaca

(B) Testes → Vasa efferentia → Kidney → Seminal Vesicle → Urinogenital duct → Cloaca

(C) Testes → Vasa efferentia → Bidder's canal → Ureter → Cloaca

(D) Testes → Vasa efferentia → Kidney → Bidder's canal → Urinogenital duct → Cloaca

Solution: (D)

In male frog the sperms will move from Testes → Vasa efferentia → Kidney → Bidder's canal → Urinogenital duct → Cloaca.

103. Spliceosomes are **not** found in cells of:

(A) Plants (B) Fungi

(C) Animals (D) Bacteria

Solution: (D)

Spliceosomes are used in removal of introns during post-transcriptional processing of hnRNA in eukaryotes only as split genes are absent as prokaryotes.

104. Which one from those given below is the period for Mendel's hybridization experiments?

(A) 1856 - 1863 (B) 1840 - 1850

(C) 1857 - 1869 (D) 1870 – 1877

Solution: (A)

Mendel conducted hybridization experiments on Pea plant for 7 years between 1856 to 1863 and his data was published in 1865 (according to NCERT).

105. The DNA fragments separated on an agarose gel can be visualised after staining with:

(A) Bromophenol blue

(B) Acetocarmine

(C) Aniline blue

(D) Ethidium bromide

Solution: (D)

Ethidium bromide is used to stain the DNA fragments and will appear as orange colored bands under UV light.

106. The function of copper ions in copper releasing IUD's is:

- (A) They suppress sperm motility and fertilizing capacity of sperms
- (B) They inhibit gametogenesis
- (C) They make uterus unsuitable for implantation
- (D) They inhibit ovulation

Solution: (A)

Cu^{2+} interfere in the sperm movement, hence suppress the sperm motility and fertilising capacity of sperms.

107. Presence of plants arranged into well-defined vertical layers depending on their height can be seen best in:

- (A) Tropical Savannah
- (B) Tropical Rain Forest
- (C) Grassland
- (D) Temperate Forest

Solution: (B)

The tropical rain forest have five vertical strata on the basis of height of plants. i.e., ground vegetation, shrubs, short canopy trees, tall canopy trees and tall emergent trees.

108. Which of the following is correctly matched for the product produced by them?

- (A) *Acetobacter aceti* : Antibiotics
- (B) *Methanobacterium* : Lactic acid
- (C) *Penicillium notatum* : Acetic acid
- (D) *Saccharomyces cerevisiae* : Ethanol

Solution: (D)

Saccharomyces cerevisiae is commonly called Brewer's yeast. It causes fermentation of carbohydrates producing ethanol.

109. What is the criterion for DNA fragments movement on agarose gel during gel electrophoresis?

- (A) The larger the fragment size, the farther it moves
- (B) The smaller the fragment size, the farther it moves
- (C) Positively charged fragments move to farther end
- (D) Negatively charged fragments do not move

Solution: (B)

During gel electrophoresis, DNA fragments separate (resolve) according to their size through sieving effect provided by agarose gel.

110. Zygotic meiosis is characteristic of

- (A) *Marchantia* (B) *Fucus*
- (C) *Funaria* (D) *Chlamydomonas*

Solution: (D)

Chlamydomonas has haplontic life cycle hence showing zygotic meiosis or initial meiosis.

111. Life cycle of *Ectocarpus* and *Fucus* respectively are

- (A) Haplontic, Diplontic
- (B) Diplontic, Haplodiplontic
- (C) Haplodiplontic, Diplontic
- (D) Haplodiplontic, Haplontic

Solution: (C)

Ectocarpus has haplodiplontic life cycle and *Fucus* has diplontic life cycle.

112. Which among the following are the smallest living cells, known without a definite cell wall, pathogenic to plants as well as animals and can survive without oxygen?

- (A) *Bacillus* (B) *Pseudomonas*
(C) *Mycoplasma* (D) *Nostoc*

Solution: (C)

Mycoplasmas are smallest, wall-less prokaryotes, pleomorphic in nature. These are pathogenic on both plants and animals.

113. Root hairs develop from the region of

- (A) Maturation (B) Elongation
(C) Root cap (D) Meristematic activity

Solution: (A)

In roots, the root hairs arise from zone of maturation. This zone is differentiated zone thus bearing root hairs.

114. Flowers which have single ovule in the ovary and are packed into inflorescence are usually pollinated by

- (A) Water (B) Bee
(C) Wind (D) Bat

Solution: (C)

Wind pollination or anemophily is favored by flowers having a single ovule in each ovary, and numerous flowers packed in an inflorescence. Wind pollination is a non-directional pollination.

115. Receptor sites for neurotransmitters are present on

- (A) Membranes of synaptic vesicles
(B) Pre-synaptic membrane
(C) Tips of axons

(D) Post-synaptic membrane

Solution: (D)

Pre-synaptic membrane is involved in the release of neurotransmitter in the chemical synapse. The receptors sites for neurotransmitters are present on post-synaptic membrane

116. Plants which produce characteristic pneumatophores and show vivipary belong to

- (A) Mesophytes (B) Halophytes
(C) Psammophytes (D) Hydrophytes

Solution: (B)

Halophytes growing in saline soils show

- (i) Vivipary which is in-situ seed germination
(ii) Pneumatophores for gaseous exchange

117. DNA replication in bacteria occurs

- (A) During s-phase
(B) Within nucleolus
(C) Prior to fission
(D) Just before transcription

Solution: (C)

DNA replication in bacteria occurs prior to fission. Prokaryotes do not show well marked S-phase due to their primitive nature.

118. The genotypes of a Husband and Wife are $I^A I^B$ and $I^A i$. Among the blood types of their children, how many different genotypes and phenotypes are possible?

- (A) 3 genotypes; 3 phenotypes
(B) 3 genotypes; 4 phenotypes
(C) 4 genotypes; 3 phenotypes

(D) 4 genotypes; 4 phenotypes

Solution: (C)

Husband × Wife
 $I^A I^B$ $I^A i$

♀ \ ♂	I^A	I^B
I^A	$I^A I^A$	$I^A I^B$
i	$I^A i$	$I^B i$

Number of genotypes = 4

Number of phenotypes = 3

$I^A I^A$ and $I^A i = A$

$I^A I^B = AB$

$I^B i = B$

119. Which of the following components provides sticky character to the bacterial cell?

- (A) Cell wall
- (B) Nuclear membrane
- (C) Plasma membrane
- (D) Glycocalyx

Solution: (D)

Sticky character of the bacterial wall is due to glycocalyx or slime layer. This layer is rich in glycoproteins.

120. Which of the following RNAs should be most abundant in animal cell?

- (A) r-RNA
- (B) t-RNA
- (C) m-RNA
- (D) mi-RNA

Solution: (A)

rRNA is most abundant in animal cell. It constitutes 80% of total RNA of the cell.

121. Anaphase promoting complex (APC) is a protein degradation machinery necessary for proper mitosis of animal cells. If APC is defective in a human cell, which of the following is expected to occur?

- (A) Chromosomes will not condense
- (B) Chromosomes will be fragmented
- (C) Chromosomes will not segregate
- (D) Recombination of chromosome arms will occur

Solution: (C)

Anaphase Promoting Complex (APC) is a protein necessary for separation of daughter chromosomes during anaphase. If APC is defective then the chromosomes will fail to segregate during anaphase.

122. Among the following characters, which one was not considered by Mendel in his experiments on pea?

- (A) Stem-Tall or Dwarf
- (B) Trichomes-Glandular or non-glandular
- (C) Seed-Green or Yellow
- (D) Pod-Inflated or Constricted

Solution: (B)

During his experiments Mendel studied seven characters.

Nature of trichomes i.e., glandular or non-glandular was not considered by Mendel.

123. Select the mismatch:

- (A) *Frankia* – *Alnus*
- (B) *Rhodospirillum* – *Mycorrhiza*
- (C) *Anabaena* – *Nitrogen fixer*
- (D) *Rhizobium* – *Alfalfa*

Solution: (B)

Rhodospirillum is anaerobic, free living nitrogen fixer. Mycorrhiza is a symbiotic relationship between fungi and roots of higher plants.

124. Double fertilization is exhibited by:

- (A) Gymnosperms (B) Algae
- (C) Fungi (D) Angiosperms

Solution: (D)

Double fertilization is a characteristic feature exhibited by angiosperms. It involves syngamy and triple fusion.

125. In case of a couple where the male is having a very low sperm count, which technique will be suitable for fertilization?

- (A) Intrauterine transfer
- (B) Gamete intracytoplasmic fallopian transfer
- (C) Artificial Insemination
- (D) Intracytoplasmic sperm injection

Solution: (C)

Infertility cases due to inability of the male partner to inseminate the female or due to very low sperm count in the ejaculates, could be corrected by artificial insemination (AI).

126. A temporary endocrine gland in the human body is

- (A) Pineal gland
- (B) Corpus cardiacum
- (C) Corpus luteum
- (D) Corpus allatum

Solution: (C)

Corpus luteum is the temporary endocrine structure formed in the ovary after ovulation. It is responsible for the release of the hormones like progesterone, oestrogen etc.

127. The vascular cambium normally gives rise to

- (A) Phelloderm (B) Primary phloem
- (C) Secondary xylem (D) Periderm

Solution: (C)

During secondary growth, vascular cambium gives rise to secondary xylem and secondary phloem. Phelloderm is formed by cork cambium.

128. During DNA replication, Okazaki fragments are used to elongate

- (A) The leading strand towards replication fork
- (B) The lagging strand towards replication fork
- (C) The leading strand away from replication fork
- (D) The lagging strand away from the replication fork

Solution: (D)

Two DNA polymerase molecules work simultaneous at the DNA fork, one on the leading strand and the other on the lagging strand.

Each Okazaki fragment is synthesized by DNA polymerase at lagging strand in $5' \rightarrow 3'$ direction. New Okazaki fragments appear as the replication fork opens further.

As the first Okazaki fragment appears away from the replication fork, the direction of elongation would be away from replication fork.

129. Artificial selection to obtain cows yielding higher milk output represents

- (A) Stabilizing selection as it stabilizes this character in the population
- (B) Directional as it pushes the mean of the character in one direction
- (C) Disruptive as it splits the population into two one yielding higher output and the other lower output

(D) Stabilizing followed by disruptive as it stabilizes the population to produce higher yielding cows

Solution: (B)

Artificial selection to obtain cow yielding higher milk output will shift the peak to one direction, hence, will be an example of Directional selection. In stabilizing selection, the organisms with the mean value of the trait are selected. In disruptive selection, both extremes get selected.

130. Which of the following options best represents the enzyme composition of pancreatic juice?

- (A) Amylase, peptidase, trypsinogen, rennin
- (B) Amylase, pepsin, trypsinogen, maltase
- (C) Peptidase, amylase, pepsin, rennin
- (D) Lipase, amylase, trypsinogen, procarboxypeptidase

Solution: (D)

Rennin and Pepsin enzymes are present in the gastric juice. Maltase is present in the intestinal juice.

131. Coconut fruit is a

- (A) Drupe
- (B) Berry
- (C) Nut
- (D) Capsule

Solution: (A)

Coconut fruit is a drupe. A drupe develops from monocarpellary superior ovary and are one seeded.

132. The water potential of pure water is

- (A) Zero
- (B) Less than zero
- (C) More than zero but less than one

(D) More than one

Solution: (A)

By convention, the water potential of pure water at standard temperature, which is not under any pressure, is taken to be zero.

133. Frog's heart when taken out of the body continues to beat for sometime

Select the best option from the following statements

(i) Frog is a poikilothermic

(ii) Frog does not have any coronary circulation

(iii) Heart is "myogenic" in nature

(iv) Heart is autoexcitable

(A) Only (iii)

(B) Only (iv)

(C) (i) and (ii)

(D) (iii) and (iv)

Solution: (D)

Frog or the vertebrates have myogenic heart having self-contractile system or are autoexcitable; because of this condition, it will keep on working outside the body for some time.

134. Good vision depends on adequate intake of carotene rich food

Select the best option from the following statements

(i) Vitamin A derivatives are formed from carotene

(ii) The photopigments are embedded in the membrane discs of the inner segment

(iii) Retinal is a derivative of vitamin A

(iv) Retinal is a light absorbing part of all the visual photopigments

(A) (i) and (ii)

(B) (i), (iii) and (iv)

(C) (i) and (iii)

(D) (ii), (iii) and (iv)

Solution: (B)

Carotene is the source of retinal which is involved in formation of rhodopsin of rod cells. Retinal, a derivative of vitamin A, is the light-absorbing part of all visual photopigments.

135. MALT constitutes about _____ percent of the lymphoid tissue in human body

(A) 50%

(B) 20%

(C) 70%

(D) 10%

Solution: (A)

MALT is Mucosa Associated Lymphoid Tissue and it constitutes about 50 percent of the lymphoid tissue in human body.

Physics

136. A spherical black body with a radius of 12 cm radiates 450 watt power at 500 K. If the radius were halved and the temperature doubled, the power radiated in watt would be

(A) 225 (B) 450

(C) 1000 (D) 1800

Solution: (D)

Rate of power loss

$$r \propto R^2 T^4$$

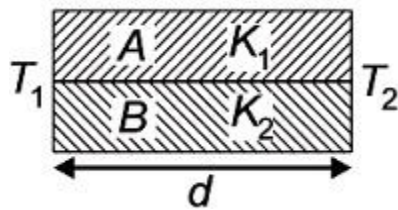
$$\frac{r_1}{r_2} = \frac{R_1^2 T_1^4}{R_2^2 T_2^4}$$

$$= 4 \times \frac{1}{16}$$

$$\frac{450}{r_2} = \frac{1}{4}$$

$$r_2 = 1800 \text{ watt}$$

137. Two rods A and B of different materials are welded together as shown in figure. Their thermal conductivities are K_1 and K_2 . The thermal conductivity of the composite rod will be



(A) $\frac{K_1 + K_2}{2}$

(B) $\frac{3(K_1 + K_2)}{2}$

(C) $K_1 + K_2$

(D) $2(K_1 + K_2)$

Solution: (A)

Thermal current

$$H = H_1 + H_2$$

$$= \frac{K_1 A (T_1 - T_2)}{d} + \frac{K_2 A (T_1 - T_2)}{d}$$

$$\frac{K_{EQ} 2A (T_1 - T_2)}{d} = \frac{A (T_1 - T_2)}{d} [K_1 + K_2]$$

$$K_{EQ} = \left[\frac{K_1 + K_2}{2} \right]$$

138. The ratio of resolving powers of an optical microscope for two wavelengths $\lambda_1 = 4000 \text{ \AA}$ and $\lambda_2 = 6000 \text{ \AA}$ is

(A) 8 : 27

(B) 9 : 4

(C) 3 : 2 (D) 16 : 81

Solution: (C)

Resolving power $\propto \frac{1}{\lambda}$

$$\begin{aligned}\frac{R_1}{R_2} &= \frac{\lambda_2}{\lambda_1} \\ &= \frac{6000 \text{ \AA}}{4000 \text{ \AA}} \\ &= \frac{3}{2}\end{aligned}$$

139. A long solenoid of diameter 0.1 m has 2×10^4 turns per meter. At the centre of the solenoid, a coil of 100 turns and radius 0.01 m is placed with its axis coinciding with the solenoid axis. The current in the solenoid reduces at a constant rate to 0 A from 4 A in 0.05 s. If the resistance of the coil is $10\pi^2\Omega$, the total charge flowing through the coil during this time is

(A) $32\pi \mu C$ (B) $16 \mu C$ (C) $32 \mu C$ (D) $16\pi \mu C$

Solution: (C)

$$\begin{aligned}\varepsilon &= -N \frac{d\phi}{dt} \\ \left| \frac{\varepsilon}{R} \right| &= \frac{N d\phi}{R dt} \\ dq &= \frac{N}{R} d\phi \\ \Delta Q &= \frac{N(\Delta\phi)}{R} \\ \Delta Q &= \frac{\Delta\phi_{total}}{R} \\ &= \frac{(NBA)}{R} \\ &= \frac{\mu_0 n i \pi r^2}{R}\end{aligned}$$

Putting values

$$= \frac{4\pi \times 10^{-7} \times 100 \times 4 \times \pi \times (0.01)^2}{10\pi^2}$$

$$\Delta Q = 32 \mu\text{C}$$

140. The de-Broglie wavelength of a neutron in thermal equilibrium with heavy water at a temperature T (Kelvin) and mass m , is:

- (A) $\frac{h}{\sqrt{mkT}}$ (B) $\frac{h}{\sqrt{3mkT}}$ (C) $\frac{2h}{\sqrt{3mkT}}$ (D) $\frac{2h}{\sqrt{mkT}}$

Solution: (B)

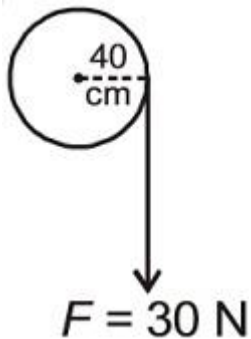
De-Broglie wavelength

$$\begin{aligned} \lambda &= \frac{h}{mv} \\ &= \frac{h}{\sqrt{2m(KE)}} \\ &= \frac{h}{\sqrt{2m\left(\frac{3}{2}kT\right)}} \\ \lambda &= \frac{h}{\sqrt{3mkT}} \end{aligned}$$

141. A rope is wound around a hollow cylinder of mass 3 kg and radius 40 cm. What is the angular acceleration of the cylinder if the rope is pulled with a force of 30 N?

- (A) 25 m/s^2 (B) 0.25 rad/s^2 (C) 25 rad/s^2 (D) 5 m/s^2

Solution: (C)



$$\tau = l \alpha$$

$$F \times R = MR^2 \alpha$$

$$30 \times 0.4 = 3 \times (0.4)^2 \alpha$$

$$12 = 3 \times 0.16 \alpha$$

$$400 = 16 \alpha$$

$$\alpha = 25 \text{ rad/s}^2$$

142. The resistance of a wire is 'R' ohm. If it is melted and stretched to 'n' times its original length, its new resistance will be

- (A) nR (B) $\frac{R}{n}$ (C) n^2R (D) $\frac{R}{n^2}$

Solution: (C)

$$\frac{R_2}{R_1} = \frac{l_2^2}{l_1^2}$$

$$= \frac{n^2 l_1^2}{l_1^2}$$

$$\frac{R_2}{R_1} = n^2$$

$$R_2 = n^2 R_1$$

143. The ratio of wavelengths of the last line of Balmer series and the last line of Lyman series is

- (A) 2 (B) 1 (C) 4 (D) 0.5

Solution: (C)

For last Balmer series

$$\frac{1}{\lambda_b} = R \left[\frac{1}{2^2} - \frac{1}{\infty^2} \right]$$

$$\lambda_b = \frac{4}{R}$$

For last Lyman series

$$\frac{1}{\lambda_l} = R \left[\frac{1}{1^2} - \frac{1}{\infty^2} \right]$$

$$\lambda_l = \frac{1}{R}$$

$$\frac{\lambda_b}{\lambda_l} = \frac{4}{\frac{1}{R}}$$

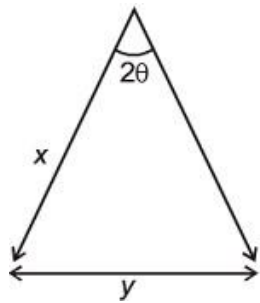
$$\frac{\lambda_b}{\lambda_l} = 4$$

144. A beam of light from a source L is incident normally on a plane mirror fixed at a certain distance x from the source. The beam is reflected back as a spot on a scale placed just above the source L. When the mirror is rotated through a small angle θ , the spot of the light is found to move through a distance y on the scale. The angle θ is given by

- (A) $\frac{y}{2x}$ (B) $\frac{y}{x}$ (C) $\frac{x}{2y}$ (D) $\frac{x}{y}$

Solution: (A)

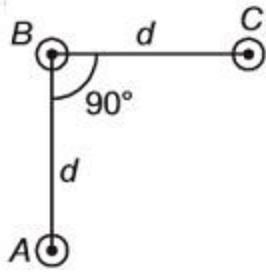
When mirror is rotated by θ angle reflected ray will be rotated by 2θ .



$$\frac{y}{x} = 2\theta$$

$$\theta = \frac{y}{2x}$$

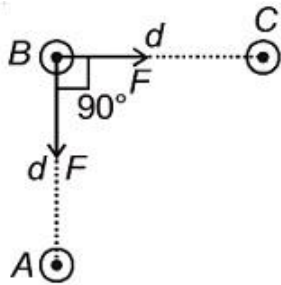
145. An arrangement of three parallel straight wires placed perpendicular to plane of paper carrying same current ' I ' along the same direction is shown in Fig. Magnitude of force per unit length on the middle wire 'B' is given by



- (A) $\frac{\mu_0 I^2}{2\pi d}$ (B) $\frac{2\mu_0 I^2}{\pi d}$ (C) $\frac{\sqrt{2}\mu_0 I^2}{\pi d}$ (D) $\frac{\mu_0 I^2}{\sqrt{2}\pi d}$

Solution: (D)

Force between BC and AB will be same in magnitude.



$$F_{BC} = F_{BA} = \frac{\mu_0 I^2}{2\pi d}$$

$$F = \sqrt{2} F_{BC}$$

$$= \sqrt{2} \frac{\mu_0 I^2}{2\pi d}$$

$$F = \frac{\mu_0 I^2}{\sqrt{2}\pi d}$$

146. Two cars moving in opposite directions approach each other with speed of 22 m/s and 16.5 m/s respectively. The driver of the first car blows a horn having a frequency 400 Hz . The frequency heard by the driver of the second car is [velocity of sound 340 m/s]

- (A) 350 Hz (B) 361 Hz
 (C) 411 Hz (D) 448 Hz

Solution: (D)

$$f_A = f \left[\frac{v + v_0}{v - v_s} \right]$$

$$= 400 \left[\frac{340 + 16.5}{340 - 22} \right]$$

$$f_A = 448 \text{ Hz}$$

147. A particle executes linear simple harmonic motion with an amplitude of 3 cm. When the particle is at 2 cm from the mean position, the magnitude of its velocity is equal to that of its acceleration. Then its time period in seconds is

- (A) $\frac{\sqrt{5}}{\pi}$ (B) $\frac{\sqrt{5}}{2\pi}$ (C) $\frac{4\pi}{\sqrt{5}}$ (D) $\frac{2\pi}{\sqrt{3}}$

Solution: (C)

$$v = \omega\sqrt{A^2 - x^2}$$

$$a = x\omega^2$$

$$v = a$$

$$\omega\sqrt{A^2 - x^2} = x\omega^2$$

$$\sqrt{(3)^2 - (2)^2} = 2 \left(\frac{2\pi}{T} \right)$$

$$\sqrt{5} = \frac{4\pi}{T}$$

$$T = \frac{4\pi}{\sqrt{5}}$$

148. A Carnot engine having an efficiency of $\frac{1}{10}$ as heat engine, is used as a refrigerator. If the work done on the system is 10J, the amount of energy absorbed from the reservoir at lower temperature is

- (A) 1 J (B) 90 J (C) 99 J (D) 100 J

Solution: (B)

$$\beta = \frac{1 - \eta}{\eta}$$

$$= \frac{1 - \frac{1}{10}}{\frac{1}{10}} = \frac{9}{\frac{1}{10}}$$

$$\beta = 9$$

$$\beta = \frac{Q_2}{W}$$

$$Q_2 = 9 \times 10 = 90 J$$

149. Radioactive material 'A' has decay constant ' 8λ ' and material 'B' has decay constant ' λ '. Initially they have same number of nuclei. After what time, the ratio of

number of nuclei of material 'B' to that 'A' will be $\frac{1}{e}$?

(A) $\frac{1}{\lambda}$ (B) $\frac{1}{7\lambda}$ (C) $\frac{1}{8\lambda}$ (D) $\frac{1}{9\lambda}$

Solution: (B)

No option is correct

If we take $\frac{N_A}{N_B} = \frac{1}{e}$

Then

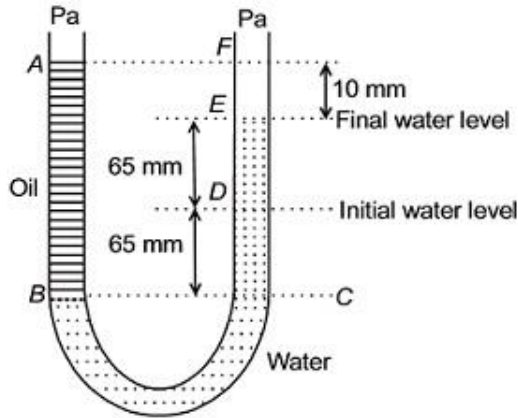
$$\frac{N_A}{N_B} = \frac{e^{-8\lambda t}}{e^{-\lambda t}}$$

$$\frac{1}{e} = e^{-7\lambda t}$$

$$= 1 = -7\lambda t$$

$$t = \frac{1}{7\lambda}$$

150. A U tube with both ends open to the atmosphere, is partially filled with water. Oil, which is immiscible with water, is poured into one side until it stands at a distance of 10 mm above the water level on the other side. Meanwhile the water rises by 65 mm from its original level (see diagram). The density of the oil is



- (A) 650 kg m^{-3} (B) 425 kg m^{-3} (C) 800 kg m^{-3} (D) 928 kg m^{-3}

Solution: (D)

$$h_{\text{oil}} \rho_{\text{oil}} g = h_{\text{water}} \rho_{\text{water}} g$$

$$140 \times \rho_{\text{oil}} = 130 \times \rho_{\text{water}}$$

$$\rho_{\text{oil}} = 928 \text{ kg m}^{-3}$$

151. Preeti reached the metro station and found that the escalator was not working. She walked up the stationary escalator in time t_1 . On other days, if she remains stationary on the moving escalator, then the escalator takes her up in time t_2 . The time taken by her to walk up on the moving escalator will be

- (A) $\frac{t_1+t_2}{2}$ (B) $\frac{t_1 t_2}{t_2-t_1}$ (C) $\frac{t_1 t_2}{t_2+t_1}$ (D) $t_1 - t_2$

Solution: (C)

$$\text{Velocity of girl w.r.t. elevator} = \frac{d}{t_1} = v_{ge}$$

$$\text{Velocity of elevator w.r.t ground } v_{eG} = \frac{d}{t_2} \text{ then velocity of girl w.r.t ground}$$

$$\vec{v}_{gG} = \vec{v}_{ge} + \vec{v}_{eG}$$

$$\text{i.e., } V_{gG} = V_{ge} + V_{eG}$$

$$\frac{d}{t} = \frac{d}{t_1} + \frac{d}{t_2}$$

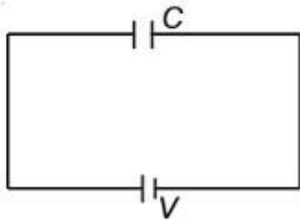
$$\frac{1}{t} = \frac{1}{t_1} + \frac{1}{t_2}$$

$$t = \frac{t_1 t_2}{(t_1 + t_2)}$$

152. A capacitor is charged by a battery. The battery is removed and another identical uncharged capacitor is connected in parallel. The total electrostatic energy of resulting system

- (A) Increases by a factor of 4
- (B) Decreases by a factor of 2
- (C) Remains the same
- (D) Increases by a factor of 2

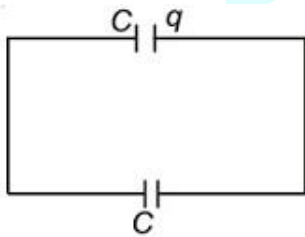
Solution: (B)



Charge on capacitor

$$q = CV$$

When it is connected with another uncharged capacitor.



$$V_c = \frac{q_1 + q_2}{C_1 + C_2} = \frac{q + 0}{C + C}$$

$$V_c = \frac{V}{2}$$

Initial energy

$$U_i = \frac{1}{2} CV^2$$

Final energy

$$U_f = \frac{1}{2}C\left(\frac{V}{2}\right)^2 + \frac{1}{2}C\left(\frac{V}{2}\right)^2$$
$$= \frac{CV^2}{4}$$

Loss of energy = $U_i - U_f$

$$= \frac{CV^2}{4}$$

i.e., decreases by a factor (ii)

153. Consider a drop of rain water having mass 1 g falling from a height of 1 km. It hits the ground with a speed of 50 m/s. Take g constant with a value 10 m/s^2 . The work done by the (i) gravitational force and the (ii) resistive force of air is

(A) (i) – 10 J (ii) – 8.25 J

(B) (i) 1.25 J (ii) – 8.25 J

(C) (i) 100 J (ii) 8.75 J

(D) (i) 10 J (ii) – 8.75 J

Solution: (D)

$$w_g + w_a = K_f - K_i$$

$$mgh + w_a = \frac{1}{2}mv^2 - 0$$

$$10^{-3} \times 10 \times 10^3 + w_a = \frac{1}{2} \times 10^{-3} \times (50)^2$$

$$w_a = -8.75 \text{ J i.e., work done due to air resistance and work done due to gravity} = 10 \text{ J}$$

154. A potentiometer is an accurate and versatile device to make electrical measurements of E.M.F, because the method involves:

(A) Cells

(B) Potential gradients

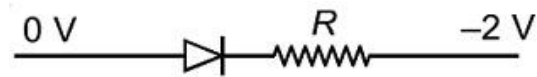
- (C) A condition of no current flow through the galvanometer
- (D) A combination of cells, galvanometer and resistances

Solution: (C)

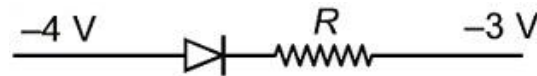
Reading of potentiometer is accurate because during taking reading it does not draw any current from the circuit.

155. Which one of the following represents forward bias diode?

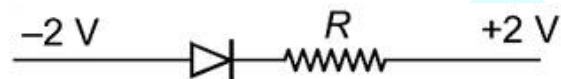
(A)



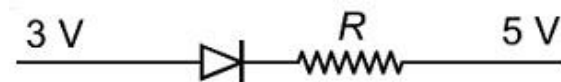
(B)



(C)



(D)



Solution: (A)

In forward bias, p-type semiconductor is at higher potential w.r.t. n-type semiconductor.

156. Which of the following statements are correct?

- (i) Centre of mass of a body always coincides with the center of gravity of the body.
- (ii) Centre of mass of a body is the point at which the total gravitational torque on the body is zero
- (iii) A couple on a body produce both translational and rotational motion in a body.
- (iv) Mechanical advantage greater than one means that small effort can be used to lift a large load.

- (A) (ii) and (iv) (B) (i) and (ii)
 (C) (ii) and (iii) (D) (iii) and (iv)

Solution: (A)

Centre of mass may or may not coincide with center of gravity.

157. The acceleration due to gravity at a height 1 km above the earth is the same as at a depth d below the surface of earth. Then

- (A) $d = \frac{1}{2} km$ (B) $d = 1 km$ (C) $d = \frac{3}{2} km$ (D) $d = 2 km$

Solution: (D)

Above earth surface	Below earth surface
$g' = g \left(1 - \frac{2h}{R_e}\right)$	$g' = g \left(1 - \frac{d}{R_e}\right)$
$\Delta g' = g \frac{2h}{R_e} \dots\dots (i)$	$\Delta g = g \frac{d}{R_e} \dots\dots (ii)$

From (i) and (ii)

$$d = 2h$$

$$d = 2 \times 1 km$$

158. A gas mixture consists of 2 moles of O_2 and 4 moles of Ar at temperature T . Neglecting all vibrational modes, the total internal energy of the system is

- (A) $4 RT$ (B) $15 RT$ (C) $9 RT$ (D) $11 RT$

Solution: (D)

$$\begin{aligned}
 U &= n_1 \frac{f_1}{2} RT + n_2 \frac{f_2}{2} RT \\
 &= 2 \times \frac{5}{2} RT + 4 \times \frac{3}{2} RT \\
 &= 5RT + 6RT \\
 U &= 11RT
 \end{aligned}$$

159. The photoelectric threshold wavelength of silver is $3250 \times 10^{-10} \text{ m}$. The velocity of the electron ejected from a silver surface by ultraviolet light of wavelength $2536 \times 10^{-10} \text{ m}$ is

(A) $\approx 6 \times 10^5 \text{ ms}^{-1}$ (B) $\approx 0.6 \times 10^6 \text{ ms}^{-1}$

(C) $\approx 61 \times 10^3 \text{ ms}^{-1}$ (D) $\approx 0.3 \times 10^6 \text{ ms}^{-1}$

Solution: (A, B)

$$\lambda_0 = 3250 \times 10^{-10} \text{ m}$$

$$\lambda = 2536 \times 10^{-10} \text{ m}$$

$$\phi = \frac{1242 \text{ eV} - nm}{325 \text{ nm}} = 3.82 \text{ eV}$$

$$hv = \frac{1242 \text{ eV} - nm}{253.6 \text{ nm}} = 4.89 \text{ eV}$$

$$KE_{max} = (4.89 - 3.82) \text{ eV} = 1.077 \text{ eV}$$

$$\frac{1}{2}mv^2 = 1.077 \times 1.6 \times 10^{-19}$$

$$v = \sqrt{\frac{2 \times 1.077 \times 1.6 \times 10^{-19}}{9.1 \times 10^{-31}}}$$

$$v = 0.6 \times 10^6 \text{ m/s}$$

160. A thin prism having refracting angle 10° is made of glass of refractive index 1.42. This prism is combined with another thin prism of glass of refractive index 1.7. This combination produces dispersion without deviation. The refracting angle of second prism

(A) 4° (B) 6° (C) 8° (D) 10°

Solution: (B)

$$(\mu - 1)A + (\mu' - 1)A' = 0$$

$$|(\mu - 1)A| = |(\mu' - 1)A'|$$

$$(1.42 - 1) \times 10^\circ = (1.7 - 1)A'$$

$$4.2 = 0.7A'$$

$$A' = 6^\circ$$

161. The bulk modulus of a spherical object is 'B'. If it is subjected to uniform pressure 'p', the fractional decrease in radius is

- (A) $\frac{p}{B}$ (B) $\frac{B}{3p}$ (C) $\frac{3p}{B}$ (D) $\frac{p}{3B}$

Solution: (D)

$$B = \frac{p}{\left(\frac{\Delta V}{V}\right)}$$

$$\frac{\Delta V}{V} = \frac{p}{B}$$

$$3 \frac{\Delta r}{r} = \frac{p}{B}$$

$$\frac{\Delta r}{r} = \frac{p}{3B}$$

162. The two nearest harmonics of a tube closed at one end and open at other end are 220 Hz and 260 Hz. What is the fundamental frequency of the system?

- (A) 10 Hz (B) 20 Hz (C) 30 Hz (D) 40 Hz

Solution: (B)

Two successive frequencies of closed pipe

$$\frac{nv}{4l} = 220 \quad \dots(i)$$

$$\frac{(n+2)v}{4l} = 260 \quad \dots(ii)$$

Dividing (ii) by (i), we get

$$\frac{n+2}{n} = \frac{260}{220} = \frac{13}{11}$$

$$11n + 22 = 13n$$

$$n = 11$$

$$\text{So, } 11 \frac{v}{4l} = 220$$

$$\frac{v}{4l} = 20$$

So fundamental frequency is 20 Hz.

163. A physical quantity of the dimensions of length that can be formed out of c , G and $\frac{e^2}{4\pi\epsilon_0}$ is [c is velocity is charge]

(A) $\frac{1}{c^2} \left[G \frac{e^2}{4\pi\epsilon_0} \right]^{\frac{1}{2}}$ (B) $c^2 \left[G \frac{e^2}{4\pi\epsilon_0} \right]^{\frac{1}{2}}$

(C) $\frac{1}{c^2} \left[\frac{e^2}{4\pi\epsilon_0} \right]^{\frac{1}{2}}$ (D) $\frac{1}{c} G \frac{e^2}{4\pi\epsilon_0}$

Solution: (A)

Let $\frac{e^2}{4\pi\epsilon_0} = A = ML^3T^{-2}$

$I = C^x G^y (A)^z$

$L = [LT^{-1}]^x [M^{-1} L^3 T^{-2}]^y [ML^3 T^{-2}]^z$

$-y + z = 0 \Rightarrow y = z$ (i)

$x + 3y + 3z = 1$ (ii)

$-x - 4z = 0$ (iii)

From (i), (ii) and (iii)

$z = y = \frac{1}{2}, x = -2$

164. One end of string of length l is connected to a particle of mass 'm' and the other end is connected to a small peg on a smooth horizontal table. If the particle moves in circle with speed 'v', the net force on the particle (directed towards center) will be (T represents the tension in the string)

(A) T (B) $T + \frac{mv^2}{l}$ (C) $T = \frac{mv^2}{l}$ (D) Zero

Solution: (A)

Centripetal force $\left(\frac{mv^2}{l}\right)$ is provided by tension so the net force will be equal to tension i.e., T.

165. A 250-Turn rectangular coil of length 2.1 cm and width 1.25 cm carries a current of $85 \mu A$ and subjected to a magnetic field of strength 0.85T. Work done for rotating the coil by 180° against the torque is:

- (A) $9.1 \mu J$ (B) $4.55 \mu J$ (C) $2.3 \mu J$ (D) $1.15 \mu J$

Solution: (A)

$$W = MB (\cos \theta_1 - \cos \theta_2)$$

When it is rotated by angle 180° then

$$W = 2MB$$

$$W = 2(NIA)B$$

$$= 2 \times 250 \times 85 \times 10^{-6} [1.25 \times 2.1 \times 10^{-4}] \times 85 \times 10^{-2}$$

$$= 9.1 \mu J$$

166. A spring of force constant k is cut into lengths of ratio 1 : 2 : 3. They are connected in series and the new force constant is k' . Then they are connected in parallel and force constant is k'' Then $k' : k''$ is

- (A) 1 : 6 (B) 1 : 9
(C) 1 : 11 (D) 1 : 14

Solution: (C)

$$\text{Spring constant} \propto \frac{1}{\text{length}}$$

$$k \propto \frac{1}{l}$$

$$\text{i.e., } k_1 = 6k$$

$$k_2 = 3k$$

$$k_3 = 2k$$

In series

$$\frac{1}{k'} = \frac{1}{6k} + \frac{1}{3k} + \frac{1}{2k}$$

$$\frac{1}{k'} = \frac{6}{6k}$$

$$k' = k$$

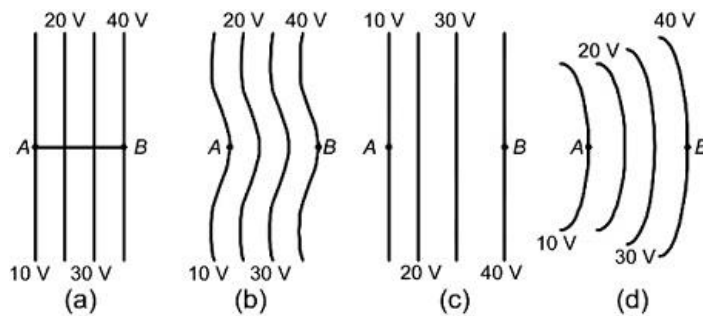
$$k'' = 6k + 3k + 2k$$

$$k'' = 11k$$

$$\frac{k'}{k''} = \frac{1}{11}$$

$$\text{i.e., } k' : k'' = 1 : 11$$

167. The diagrams below show regions of equipotential.



A positive charge is moved from A to B in each diagram.

- (A) Maximum work is required to move q in figure (c)
- (B) In all the four cases the work done is the same
- (C) Minimum work is required to move q in figure (a)
- (D) Maximum work is required to move q in figure (b)

Solution: (B)

$$\text{Work done } w = q\Delta V$$

ΔV is same in all the cases so work is done will be same in all the cases.

168. Two astronauts are floating in gravitational free space after having lost contact with their spaceship. The two will:

- (A) Keep floating at the same distance between them
- (B) Move towards each other

(C) Move away from each other

(D) Will become stationary

Solution: (B)

Both the astronauts are in the condition of weightiness. Gravitational force between them pulls towards each other.

169. The x and y coordinates of the particle at any time are $x = 5t - 2t^2$ and $y = 10t$ respectively, where x and y are in meters and t in seconds. The acceleration of the particle at $t = 2s$ is

- (A) 0 (B) 5 m/s^2 (C) -4 m/s^2 (D) -8 m/s^2

Solution: (C)

$$x = 5t - 2t^2 \quad y = 10t$$

$$\frac{dx}{dt} = 5 - 4t \quad \frac{dy}{dt} = 10$$

$$v_x = 5 - 4t \quad v_y = 10$$

$$\frac{dv_x}{dt} = -4 \quad \frac{dv_y}{dt} = 0$$

$$a_x = -4 \quad a_y = 0$$

Acceleration of particle at $t = 2s$ is $= -4 \text{ m/s}^2$

170. Young's double slit experiment is first performed in air and then in a medium other than air. It is found that 8^{th} bright fringe in the medium lies where 5^{th} dark fringe lies in air. The refractive index of the medium is nearly

- (A) 1.25 (B) 1.59 (C) 1.69 (D) 1.78

Solution: (D)

$$X_1 = X_{5^{th} \text{ dark}} = (2 \times 5 - 1) \frac{\lambda D}{2d}$$

$$X_2 = X_{8^{th} \text{ bright}} = 8 \frac{\lambda D}{\mu d}$$

$$X_1 = X_2$$

$$\frac{9 \lambda D}{2 d} = 8 \frac{\lambda D}{\mu d}$$

$$\mu = \frac{16}{9} = 1.78$$

171. If θ_1 and θ_2 be the apparent angles of dip observed in two vertical planes at right angles to each other, then the true angle of dip θ is given by

(A) $\cot^2 \theta = \cot^2 \theta_1 + \cot^2 \theta_2$

(B) $\tan^2 \theta = \tan^2 \theta_1 + \tan^2 \theta_2$

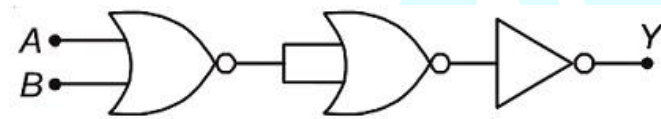
(C) $\cot^2 \theta = \cot^2 \theta_1 - \cot^2 \theta_2$

(D) $\tan^2 \theta = \tan^2 \theta_1 - \tan^2 \theta_2$

Solution: (A)

$$\cot^2 \theta = \cot^2 \theta_1 + \cot^2 \theta_2$$

172. The given electrical network is equivalent to



(A) AND gate

(B) OR gate

(C) NOR gate

(D) NOT gate

Solution: (C)

$$Y = \overline{A + B}$$

173. Suppose the charge of a proton and an electron differ slightly. One of them is $-e$, the other is $(e + \Delta e)$. If the net of electrostatic force and gravitational force between two hydrogen atoms placed at

a distance d (much greater than atomic size) apart is zero, then Δe is of the order of [Given mass of hydrogen $m_h = 1.67 \times 10^{-27} \text{ kg}$]

- (A) 10^{-20} C (B) 10^{-23} C (C) 10^{-37} C (D) 10^{-47} C

Solution: (C)

$$F_E = F_g$$

$$\frac{1}{4\pi\epsilon_0} \frac{\Delta e^2}{d^2} = \frac{Gm^2}{d^2}$$

$$9 \times 10^9 (\Delta e^2) = 6.67 \times 10^{-11} \times 1.67 \times 10^{-27} \times 1.67 \times 10^{-27}$$

$$\Delta e^2 = \frac{6.67 \times 1.67 \times 1.67}{9} \times 10^{-74}$$

$$\Delta e \approx 10^{-37}$$

174. In a common emitter transistor amplifier the audio signal voltage across the collector is 3 V. The resistance of collector is $3 \text{ k}\Omega$. If current gain is 100 and the base resistance is $2 \text{ k}\Omega$, the voltage and power gain of the amplifier is

- (A) 200 and 1000
(B) 15 and 200
(C) 150 and 15000
(D) 20 and 2000

Solution: (C)

$$\text{Current gain } (\beta) = 100$$

$$\text{Voltage gain } (A_V) = \beta \frac{R_c}{R_b}$$

$$= 100 \left(\frac{3}{2} \right)$$

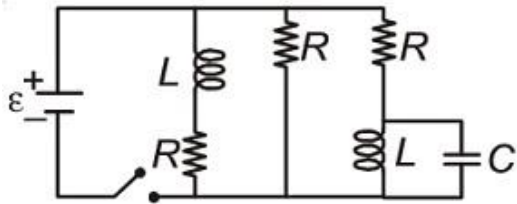
$$= 150$$

$$\text{Power gain} = A_V \beta$$

$$= 150 (100)$$

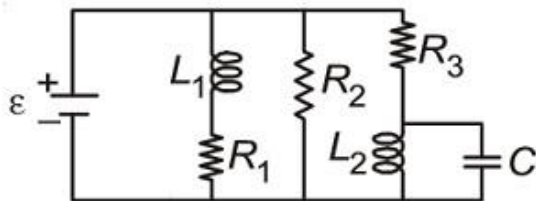
$$= 15000$$

175. Figure shows a circuit contains three identical resistors with resistance $R = 9.0 \Omega$ each, two identical inductors with inductance $L = 2.0 \text{ mH}$ each, and an ideal battery with emf $\varepsilon = 18 \text{ V}$. The current 'i' through the battery just after the switch closed is

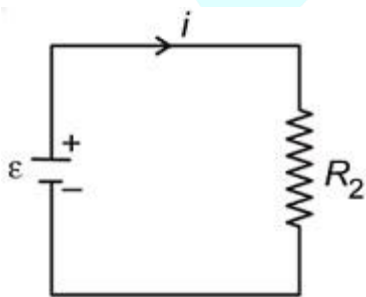


- (A) 2 mA
- (B) 0.2 A
- (C) 2 A
- (D) 0 ampere

Solution: (C)



At $t = 0$, no current flows through R_1 and R_3



∴

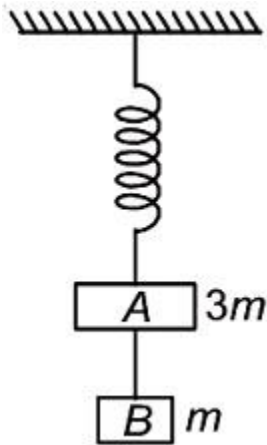
$$i = \frac{\varepsilon}{R_2}$$

$$= \frac{18}{9}$$

$$= 2A$$

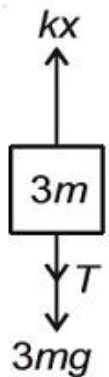
Note: Not correctly framed but the best option out of given is (iii).

176. Two blocks A and B of masses $3m$ and m respectively are connected by a massless and inextensible string. The whole system is suspended by a massless spring as shown in figure. The magnitudes of acceleration of A and B immediately after the string is cut, are respectively



- (A) $g, \frac{g}{3}$ (B) $\frac{g}{3}, g$ (C) g, g (D) $\frac{g}{3}, \frac{g}{3}$

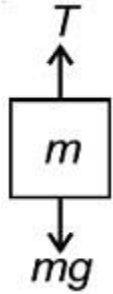
Solution: (B)



Before the string is cut

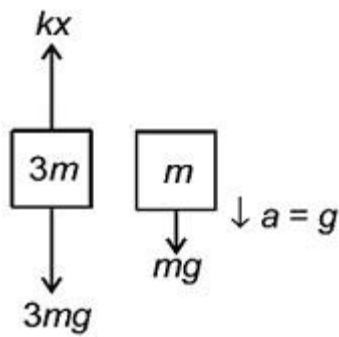
$$kx = T + 3mg \quad \dots\dots(i)$$

$$T = mg \quad \dots\dots(ii)$$



$$\Rightarrow kx = 4mg$$

After the string is cut, $T = 0$



$$a = \frac{kx - 3mg}{3m}$$

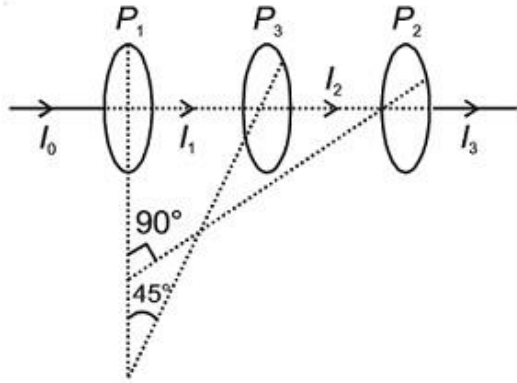
$$a = \frac{4mg - 3mg}{3m}$$

$$a = \frac{g}{3} \uparrow$$

177. Two Polaroids P_1 and P_2 are placed with their axis perpendicular to each other. Unpolarised light I_0 is incident on P_1 . A third polaroid P_3 is kept in between P_1 and P_2 such that its axis makes an angle 45° with that of P_1 . The intensity of transmitted light through P_2 is

- (A) $\frac{I_0}{2}$ (B) $\frac{I_0}{4}$ (C) $\frac{I_0}{8}$ (D) $\frac{I_0}{16}$

Solution: (C)



$$I_2 = \frac{I_0}{2} \cos^2 45^\circ$$

$$= \frac{I_0}{2} \times \frac{1}{2}$$

$$= \frac{I_0}{4}$$

$$I_3 = \frac{I_0}{4} \cos^2 45^\circ$$

$$I_3 = \frac{I_0}{8}$$

178. Two discs of same moment of inertia rotating about their regular axis passing through center and perpendicular to the plane of disc with angular velocities ω_1 and ω_2 . They are brought into contact face to face coinciding the axis of rotation. The expression for loss of energy during this process is

(A) $\frac{1}{2}I(\omega_1 + \omega_2)^2$

(B) $\frac{1}{4}I(\omega_1 - \omega_2)^2$

(C) $I(\omega_1 - \omega_2)^2$

(D) $\frac{1}{8}I(\omega_1 - \omega_2)^2$

Solution: (B)

$$\Delta KE = \frac{1}{2} \frac{I_1 I_2}{I_1 + I_2} (\omega_1 - \omega_2)^2$$

$$= \frac{1}{2} \frac{I^2}{(2I)} (\omega_1 - \omega_2)^2$$

$$= \frac{1}{4} I (\omega_1 - \omega_2)^2$$

179. In an electromagnetic wave in free space the root mean square value of the electric field is $E_{rms} = 6 \text{ V/m}$. The peak value of the magnetic field is

- (A) $1.41 \times 10^{-8} \text{ T}$ (B) $2.83 \times 10^{-8} \text{ T}$
 (C) $0.70 \times 10^{-8} \text{ T}$ (D) $4.23 \times 10^{-8} \text{ T}$

Solution: (B)

$$\frac{E_{rms}}{B_{rms}} = c$$

$$B_{rms} = \frac{E_{rms}}{c}$$

$$= \frac{6}{3 \times 10^8}$$

$$B_{rms} = 2 \times 10^{-8}$$

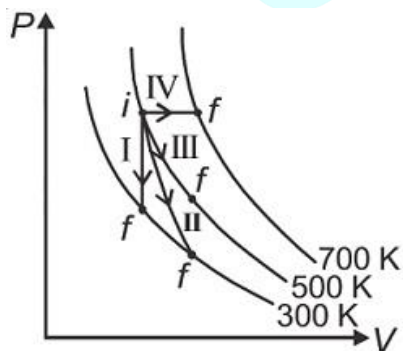
$$B_{rms} = \frac{B_0}{\sqrt{2}}$$

$$B_0 = \sqrt{2} \times B_{rms}$$

$$= \sqrt{2} \times 2 \times 10^{-8}$$

$$= 2.83 \times 10^{-8} \text{ T}$$

180. Thermodynamic processes are indicated in the following diagram.



Match the following

Column – 1	Column – 2
P. Process I	a. Adiabatic
Q. Process II	b. Isobaric

R. Process III	c. Isochoric
S. Process IV	d. Isothermal

(A) $P \rightarrow a, Q \rightarrow c, R \rightarrow d, S \rightarrow b$

(B) $P \rightarrow c, Q \rightarrow a, R \rightarrow d, S \rightarrow b$

(C) $P \rightarrow c, Q \rightarrow d, R \rightarrow b, S \rightarrow a$

(D) $P \rightarrow d, Q \rightarrow b, R \rightarrow a, S \rightarrow c$

Solution: (B)

Process I = Isochoric

II = Adiabatic

III = Isothermal

IV = Isobaric

embibe