



# NEOGARD<sup>®</sup> CONSTRUCTION COATING GUIDE



**NEOGARD<sup>®</sup>**  
CONSTRUCTION COATINGS  
A part of the Hempel Group

## GENERAL BUILDING APPLICATIONS



### Parking Garages

**Auto-Gard/Auto-Gard FC** - Protect your garage from intrusive deicing chemicals or salt and prevent expensive spall repairs.

**Neocrylic LR** - Light reflective, acrylic coating for interior garage ceilings, walls and columns.



### Balcony/Pedestrian Decks

**Peda-Gard/Peda-Gard LT/Peda-Gard FC** - Pedestrian traffic bearing waterproofing systems.

**NEocreTE** - Cement based polyurethane mortar for fill or leveling. Available in self-leveling and trowel formulations.



### Garage Ventilation Shafts

**Neoflex** - Elastomeric coating for waterproofing protection of CMU and concrete elevator shafts.



### Café/Coffee Shops

**KitchenGard** - 3/16" epoxy flooring system for light duty applications.



### Restrooms

**NeoQuartz** - 1/8" seamless decorative quartz flooring system with a high chemical and stain resistant CRU topcoat. Can be installed over NEOGARD's waterproofing membrane for application over occupied spaces. Available in a variety of textures.



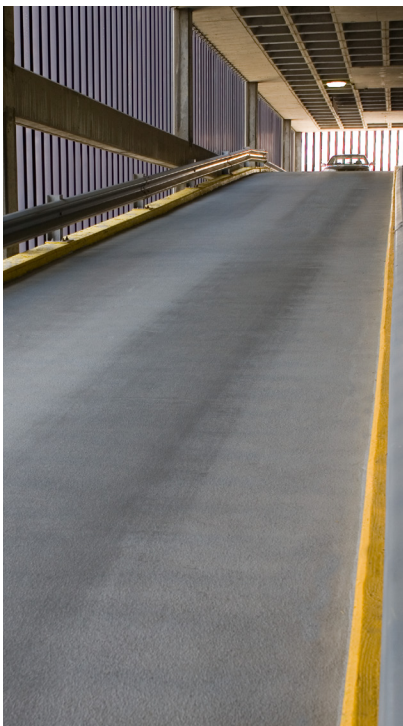
### Commercial Kitchens

**NEocreTE SL Broadcast** - Ideal for use in commercial kitchens. Handles thermal shock and heavy impact while providing a textured finish with excellent chemical resistance and quick installation. Can be installed over NEOGARD's waterproofing membrane for applications over occupied space.



### Trash Rooms & Corridors

**CG-32** - 32 mil chemical resistant coating for 'back of the house' and other concrete areas that are subject to heavy abuse such as rolling trash carts.



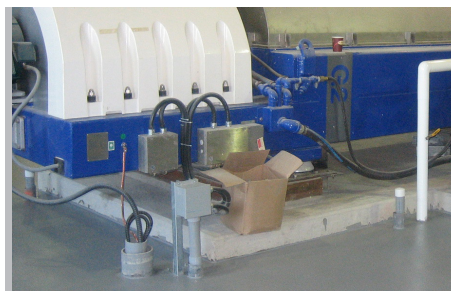
### Garage Ramps

**Auto-Gard F** - Protective waterproofing system utilizing an aggressive flint aggregate profile for ramps and other high traction applications.



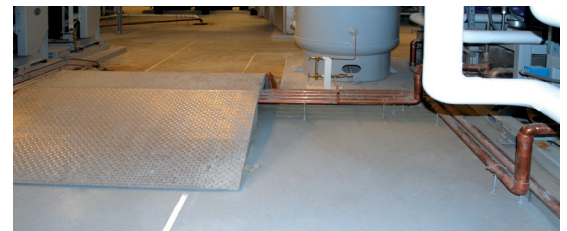
### Mechanical Rooms

**Peda-Gard M** - Pedestrian waterproofing membrane with epoxy wear course for abrasion and chemical resistance.



### Generator Rooms

**Peda-Gard SC** - Secondary containment waterproofing membrane with a diesel fuel resistant epoxy finish coat.



### Elevated Loading Docks

**Auto-Gard E** - Waterproofing membrane with epoxy wear course with high abrasion and chemical resistance.



### Reflecting Pools/Fountains

**Pool-Gard C** - Waterproofing membrane for interior and exterior fountains and reflecting pools.



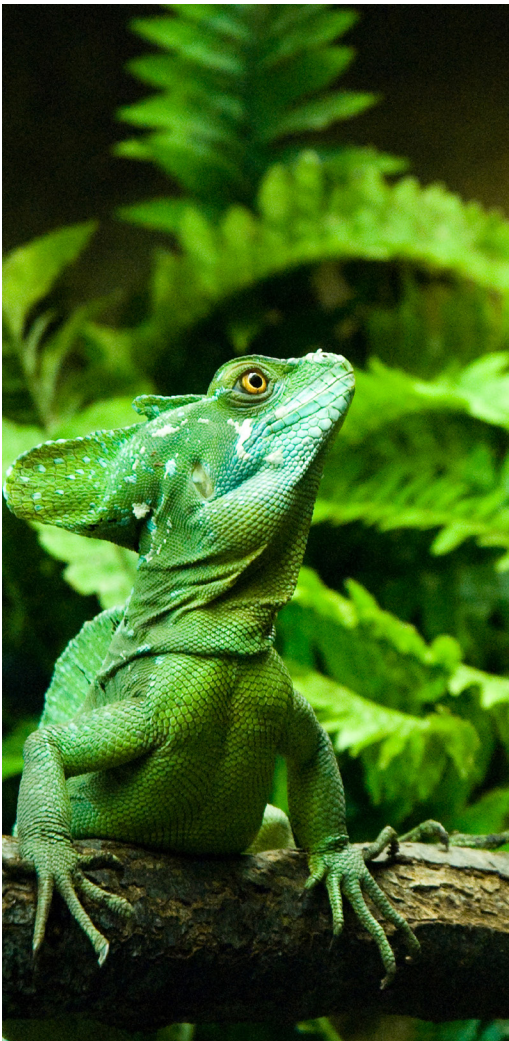
### General Science Laboratories

**NEOCRETE SL Flake** - Decorative flooring system with a chemically resistant urethane (CRU) topcoat.



### Central Sterile Processing

**NEOCRETE SL Broadcast** - Solid color urethane cement flooring. Can be tapered to provide a positive slope for draining and can be installed over NEOGARD's waterproofing membrane. Available in variety of textures.



### Vivarium

(Optional waterproofing membrane available)

### Cage Wash/Wash Pit

**NEOCRETE SL Broadcast** - Can be used to fill concrete deficiencies and tapered to provide a slope for draining while a Novolac finish coat provides resistance to staining from urine.

### Small Animal (Rats, Mice & Rabbits)

**NEOCRETE Trowel** - A Novolac finish coat provides resistance to staining from urine.

### Large Animal (Primates & Swine)

**NEOCRETE SL Quartz/NEOCRETE SL Broadcast** - A Novolac finish coat provides resistance to staining from urine.



### Central Supply

**CG-32** - Solid color seamless epoxy flooring system with a Novolac chemical resistant epoxy finish coat. Available in a variety of textures. Can be installed over NEOGARD's waterproofing membrane for applications over occupied spaces.



### Surgical Suites/MRI/X-Ray

**NeoQuartz/CRU** - 1/8" or 3/16" seamless decorative quartz flooring system utilizing a high chemical and stain resistant CRU topcoat. Available in a variety of textures.



### Patient Shower Rooms

**NEOCRETE SL Quartz CRU** - Flooring system installed over a waterproofing membrane. Can provide a positive slope for draining while utilizing a high chemical and stain resistant CRU topcoat. Available in variety of textures.

## FOOD PREPARATION



### Deli Prep

**NEOCRETE SL Quartz CRU** - 1/8" or 3/16" seamless decorative quartz flooring system with a high chemical and stain resistant CRU topcoat. Can be installed over a waterproofing membrane for application over occupied spaces. Available in a variety of textures.



### Meat/Butcher USDA Compliant

**NEOCRETE SL Broadcast** - Textured system handles thermal shock and heavy impact while providing excellent chemical resistance; making it ideal for use in commercial kitchens. Can be installed over a waterproofing membrane for application over occupied spaces.

### Seafood

**NEOCRETE SL Quartz CRU** - Textured system handles thermal shock and heavy impact while providing excellent chemical resistance; making it ideal for use in commercial kitchens. Can be installed over a waterproofing membrane for application over occupied spaces.

## FOOD PREPARATION



### Bakery

**NEOCRETE SL Quartz** - Textured system handles thermal shock and heavy impact while proving excellent chemical resistance. Available in a variety of textures. Can be installed over a waterproofing membrane for application over occupied spaces.

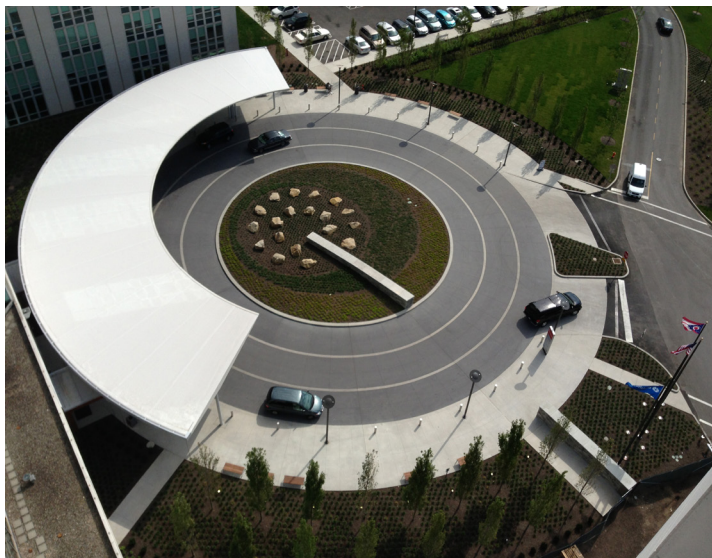
### Thin Set Tile For Restrooms

**Peda-Gard TS** - Fluid applied seamless waterproofing system with aggregate profile. Designed to provide waterproofing for restrooms where potential flooding and leakage can occur.

### Warehouses

**WearTuff** - Thin film epoxy system to dustproof, seal and protect warehouse flooring.

## ROOFING SOLUTIONS



### Office Building Roofs

**Elasta-Gard SP Aliphatic/Elasta-Gard C Aliphatic** - Long-term protection over single-ply (SP) and concrete (C) roof substrates used on both high, mid and low-rise office building properties. These systems form a seamless waterproofing membrane to provide superior waterproofing, durability, flexibility, color retention and potential energy savings.



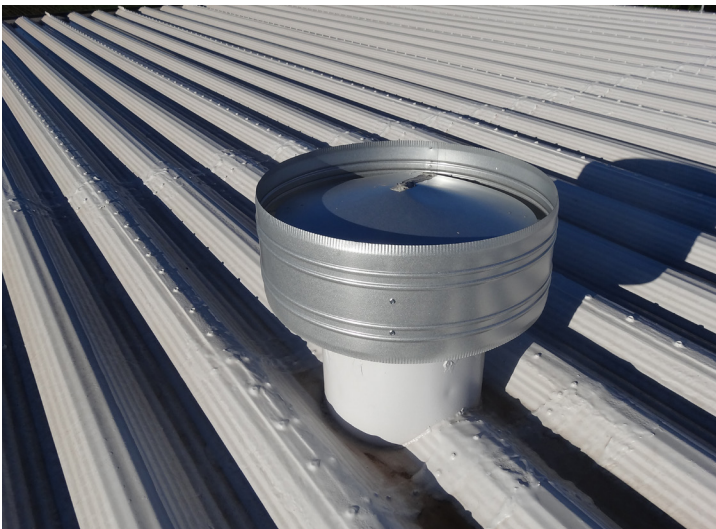
### Condominium Roofs

**Elasta-Gard C Aliphatic** - Long-term protection for concrete roof substrates commonly used for multifamily housing facilities. The system forms a seamless waterproofing membrane to provide superior waterproofing, durability, flexibility, color retention and potential energy savings.



## Silo & Industrial Facility Roofs

**Elasta-Gard C Aliphatic** - Long-term protection for concrete roofs commonly used at industrial facilities. The system forms a seamless waterproofing membrane to provide superior waterproofing, durability, flexibility, color retention and potential energy savings.



## Manufacturing Roofs

**Elasta-Gard M Aliphatic** - Long-term protection for metal roofs commonly used at warehouses and manufacturing facilities. The system forms a seamless waterproofing membrane to provide superior waterproofing, durability, flexibility, color retention and potential energy savings.



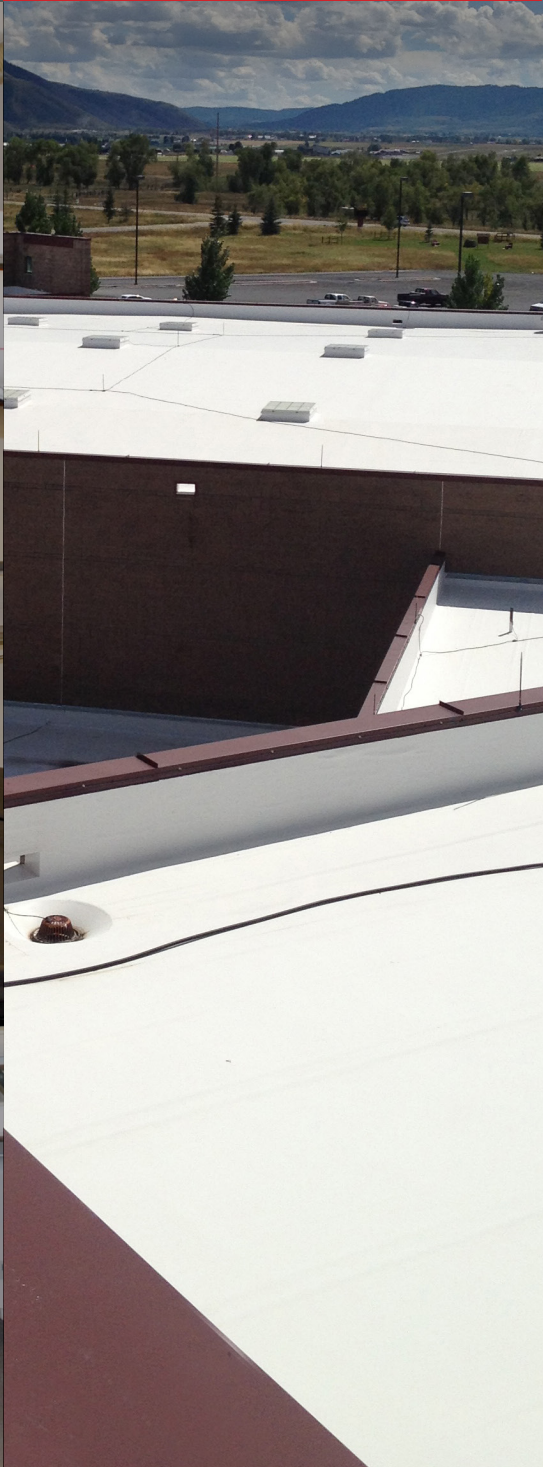
## School Roofs

**Elasta-Gard SP Aliphatic/Elasta-Gard BUR/MB Aliphatic** - Long-term protection over single-ply (SP), modified bitumen (MB) and built-up roof (BUR) substrates commonly used on education facilities. These systems form a seamless waterproofing membrane to provide superior waterproofing, durability, flexibility, color retention and potential energy savings.

**Elastacryl FR/ Permthane Aliphatic/Silicone FR** - Acrylic, urethane or silicone based coatings that deliver long-term protection over 2.7 - 3.2 pound density polyurethane roofing foam (foam provided by others). The system forms a seamless waterproofing membrane to provide superior waterproofing, durability, flexibility, color retention and potential energy savings.



# NEOGARD<sup>®</sup> CONSTRUCTION COATING GUIDE



**NEOGARD<sup>®</sup>**  
CONSTRUCTION COATINGS  
A part of the Hempel Group