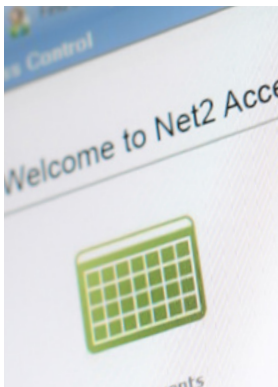




Net2 Installer Guide



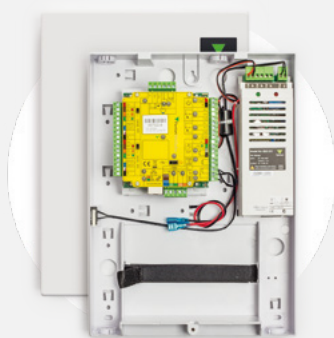
Contents

What is Net2 Access Control?	3
How Does Net2 Work?	4
Net2 Software	5
Net2 Software Features	6
Hardware	8
Readers and Keypads	9
Net2 PaxLock	10
PaxLock Pro	11
Door Entry	12
Door Entry System	13
Door Entry Components	14
Case Studies	15
Integrations	18
Additional Information	20

What is Net2 Access Control?

Net2 is Paxton's user friendly and flexible networked access control and door entry system, which is managed from a central PC.

Net2 access control is easy to install and designed to make the management of any building very simple. Net2 offers a range of IP, battery powered, door entry and wireless or wired door controllers to suit any site requirement, making installers' lives easier.



Wired Access Control

Our networked access control system, Net2, is administered using one or more PCs and can be monitored and managed from a central location.



Wireless Access Control

The Net2 PaxLock and PaxLock Pro are wireless networked access control solutions in a door handle. They communicate wirelessly to the server PC via a Net2Air Bridge, reducing cabling and installation time.



Video Door Entry

Net2 Entry is our straightforward door entry system that works standalone or when used alongside Net2 access control. Net2 Entry can be used to allow day-to-day access for users who have an RFID token, PIN or code.

How Does Net2 Work?

Networked Access Control

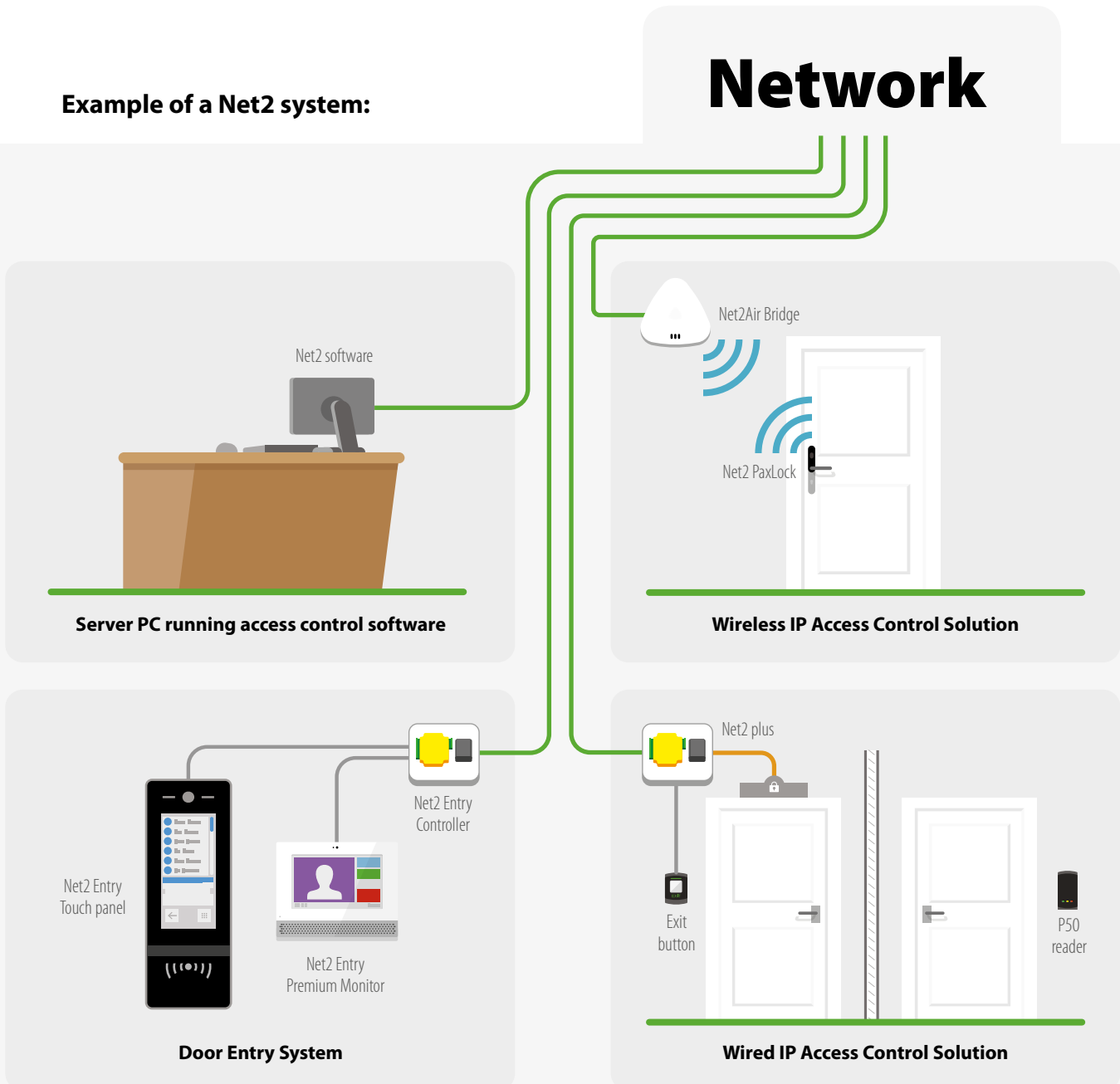
Our networked access control system, Net2, is administered using one or more PCs and can be monitored and managed from a central location. Our door controllers come as wired, wireless or battery powered.

Net2 is designed with simplicity in mind and is easily scalable. Paxton's one door controller philosophy means you only quote for doors that require access. You can build your Net2 system one door at a time using wired and wireless controllers and door entry for versatile security and building management.

Benefits of the Net2 system:

- Modular approach for simplicity and scalability
- Simple intuitive software
- Range of features that move beyond basic access control
- A complete solution that encompasses wireless and door entry

Example of a Net2 system:



Software Overview

There are two versions of the software: Net2 Lite, which is ideal for most sites and is free of charge, and Net2 Pro, which offers extra features for more flexible and advanced access control. Developed to be straightforward and intuitive the Net2 software is very easy to learn for both you and your customers.



Feature	Net2 Lite	Net2 Pro
Multiple clients	•	•
Free upgrades	•	•
CCTV integration	•	•
Site graphics	•	•
Triggers and actions	•	•
Intruder alarm integration*	•	•
Net2 Entry compatible	•	•
Biometric integration	•	•
Landlord Tenant	-	•
Timesheet & Timeline*	-	•
Card designer	-	•
Roll call and muster reporting*	-	•
Fire alarm integration*	-	•
Anti-passback*	-	•
Security lockdown*	-	•
Multi-zone intruder alarm integration*	-	•
Custom days*	-	•
Areas	-	•
Customisable welcome page	-	•
Paxton Connect Admin**	-	•

* Not available with wireless products

** Paxton Connect Admin app only works with Net2 Pro v6.00 or above

NEW Paxton Connect Admin

Site management made easy

Provide easy and flexible site management for Net2 System Engineers and Net2 Operators. Manage multiple sites remotely from a smartphone.

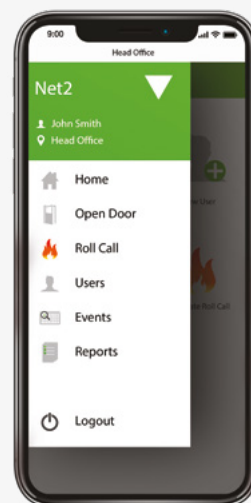
Features include:

- ▶ User admin
- ▶ Managing roll call reports
- ▶ Open door functionality
- ▶ Viewing reports and events

Download now:



Find out more: paxton.info/3395



Software Features

Tailor access privileges to groups or individuals quickly and easily using our intuitive, user-friendly software. Event reports can be generated in a few clicks and the advanced features such as site graphics, IP camera integration and triggers and actions further extend the capabilities of the system.

COMPATIBILITY

Net2 software is compatible with Windows 8, Windows 7 or Vista operating systems and is designed to feel familiar to any Windows user.



Free upgrades

Software upgrades are always free of charge, allowing system users to benefit from new features as they become available



Unlimited client workstations

Net2 software does not restrict the number of operators who can have access and it can be installed free of charge on multiple PCs



Multiple operator levels

An unlimited number of people can administer the system with different levels of security applied



Live events

View events in real time
Full event logging - review historical events



Reporting

Pre-defined reports allow you to review the most relevant data quickly
Build custom reports based on individuals, departments or doors



Open door function

Utilise the software to open individual doors or groups of doors from a client workstation



Site graphics

Import 2D images of your site to give a graphical view of door open or alarm status for operators or security personnel



Triggers & actions

Administrators can easily create rules based on system events. These include sending emails and SMS, controlling doors and relays in response to access events or alarms



User image verification

This enables the system administrator to visually confirm the identity of the user



Custom days

Custom days offers organisations flexibility allowing users to create a time period in the Net2 software for special events and occasions. This is useful when organising events such as school open days, or extended store opening hours



Temporary access rights

Temporary access permissions can be used to automatically upgrade or downgrade a user's access permissions for a set period of time



Turnstile mode

Control bi-directional turnstiles with a single door controller saving wiring time and hardware expense



PRO Timesheet & timeline

By allocating specific proximity readers for clocking in and out you can use Net2 to log the working hours of employees. You can also note periods of time out of the office for reasons such as vacation, appointments and unpaid leave, etc. Reports can also be exported for use with HR applications



PRO Who is in?

Displays the last known location of a user based on the last reader they presented a token to



PRO Landlord Tenant / Advanced operator permissions

Operators using Net2 software can be managed in various ways to limit access and enhance security. With Landlord Tenant / Advanced operator permissions it is possible to restrict operators to only administer users within certain departments and apply specific access level permissions to those users



PRO Roll call & muster reporting

Roll call allows the system administrator to obtain a report listing all users currently within a specified area. This is primarily used in the event of an emergency, such as a fire alarm, when it can be used to check that everyone is out of the building



PRO Areas

Areas and area groups make it easier to set up access levels on larger sites by grouping multiple doors into a single access controlled area. It also allows the use of advanced features such as anti-passback



PRO Anti-passback

The main purpose of an anti-passback system is to prevent a user from passing their token back to a second person to gain entry into the same controlled area; for example, a car park



PRO Card designer

Personalise access control tokens with employee pictures, details and company information



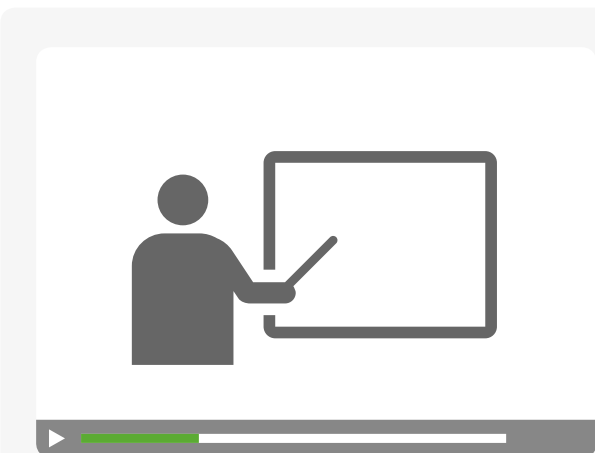
PRO Security lockdown

Security lockdown is ideal for buildings or sensitive sites that need to secure the premises in the event of an emergency, allowing only specific security personnel free movement during lockdown



PRO Customisable welcome page

Installers can customise the welcome screen of every Net2 system they install or maintain with their logo and contact details. This ensures that the customer knows who to contact if they need support



SOFTWARE DEMONSTRATIONS

Watch our tutorial videos and learn how you can get the very best from the Net2 software and offer your customers more from their access control system.

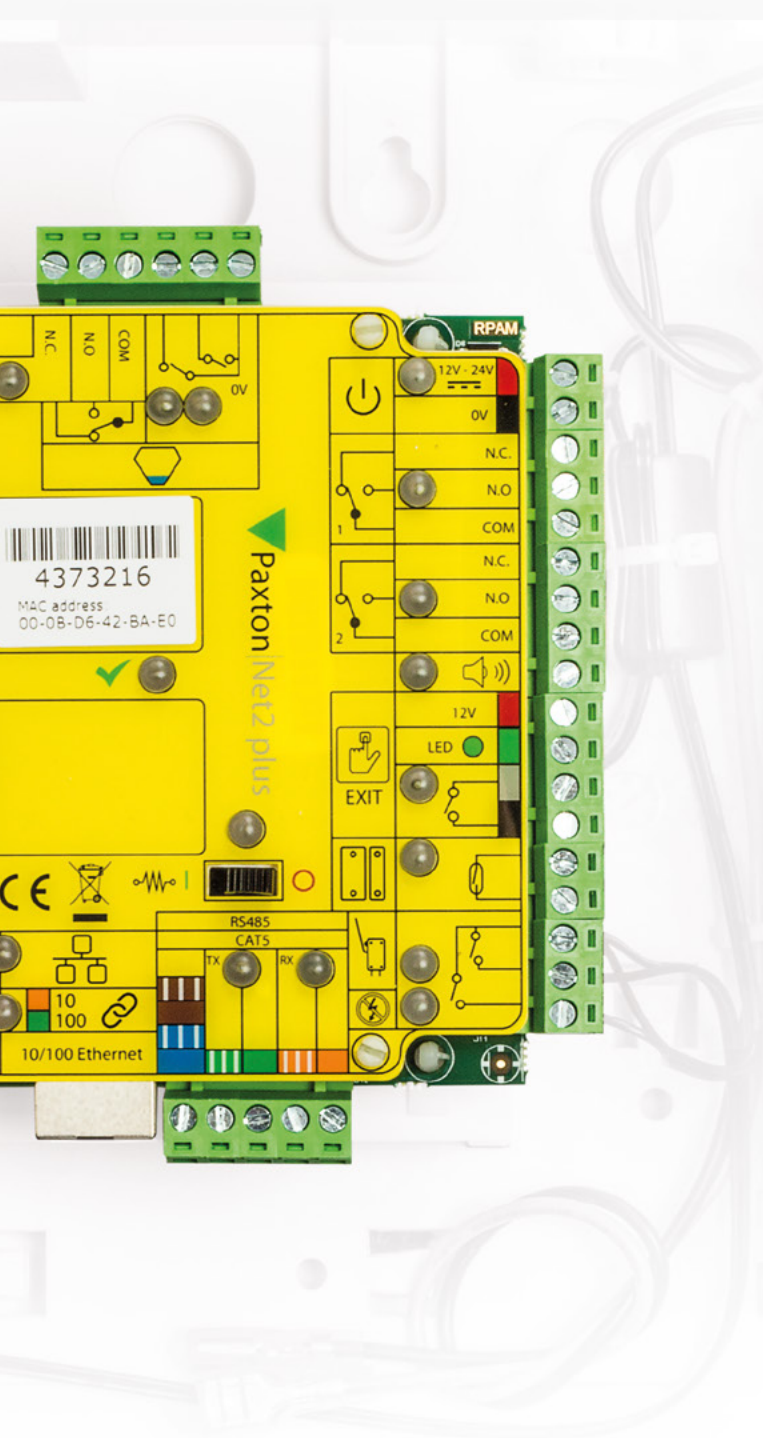
- Using a card designer
- Adding a new user
- Barring a user
- Lost card?
- Restricting access permissions

Watch our videos here:
<http://paxton.info/3209>

PRO - features only available in Net2 Pro software

Door Controllers

All Net2 door controllers can be used alongside each other, making it easy for installers to find the best solution for each individual site.



Net2 plus door controller



Net2 plus is Paxton's most powerful door controller, which uses TCP/IP technology to allow direct connection to the IP network, saving time with minimal wiring needed.

- Use existing LAN or RS485 infrastructure on a site
- Easy installation with minimal wiring
- Future proof and easily scalable
- Create more site opportunities

Net2 plus door controller with PoE



Power over Ethernet (PoE) is a technology that allows both power and data to be streamed along the same Ethernet cable. Net2 plus with PoE as a power source makes installations quick and easy.

- Enjoy all the benefits of Net2 plus, with a single cable for power and data
- Choose to use mains or PoE
- Installation is more efficient and convenient
- Save time and money on extra cabling

Net2 nano door controller



Net2 nano is a wireless door controller, using secure wireless technology to communicate to the server PC.

- Communicates using Net2Air technology, Paxton's secure and reliable wireless protocol
- Minimal wiring needed
- Easy installation and configuration

Readers and Keypads

Due to the wide range of site requirements, we offer a variety of readers and keypads suitable for use with Net2. This includes readers and keypads with vandal resistant, energy saving and long range capabilities.

Most of our readers can now read HID™ 125kHz Proximity tokens, when enabled with an activation licence card. If required these readers can still be enabled to have Wiegand, via a separate activation licence card.



P series

The P series range of readers is Paxton's most popular and comprises four readers ranging in size from the P38 to the P200. A P38 fits neatly onto a door frame while the size of the P200 creates a longer token read range. All P series readers are supplied with two fascias, one black and one white. We supply free fascia replacements to keep your sites looking smart.



Long range reader

The Long range reader is designed for hands free access, its read range of 5m means that the token can be detected from within a vehicle, for car parks, barriers and wheel chair user access.



Energy saving reader

The Energy saving reader is used to ensure that electrical equipment is only switched on when an authorised user card is inserted and retained, ideal for energy saving and safety.



KP75 MIFARE® Keypad

The KP75 MIFARE® keypad has a durable, metal frame design and is suitable for both exterior and interior use.



Marine reader

The Marine reader is made of marine grade stainless steel and is built to withstand the elements as well as look stylish.

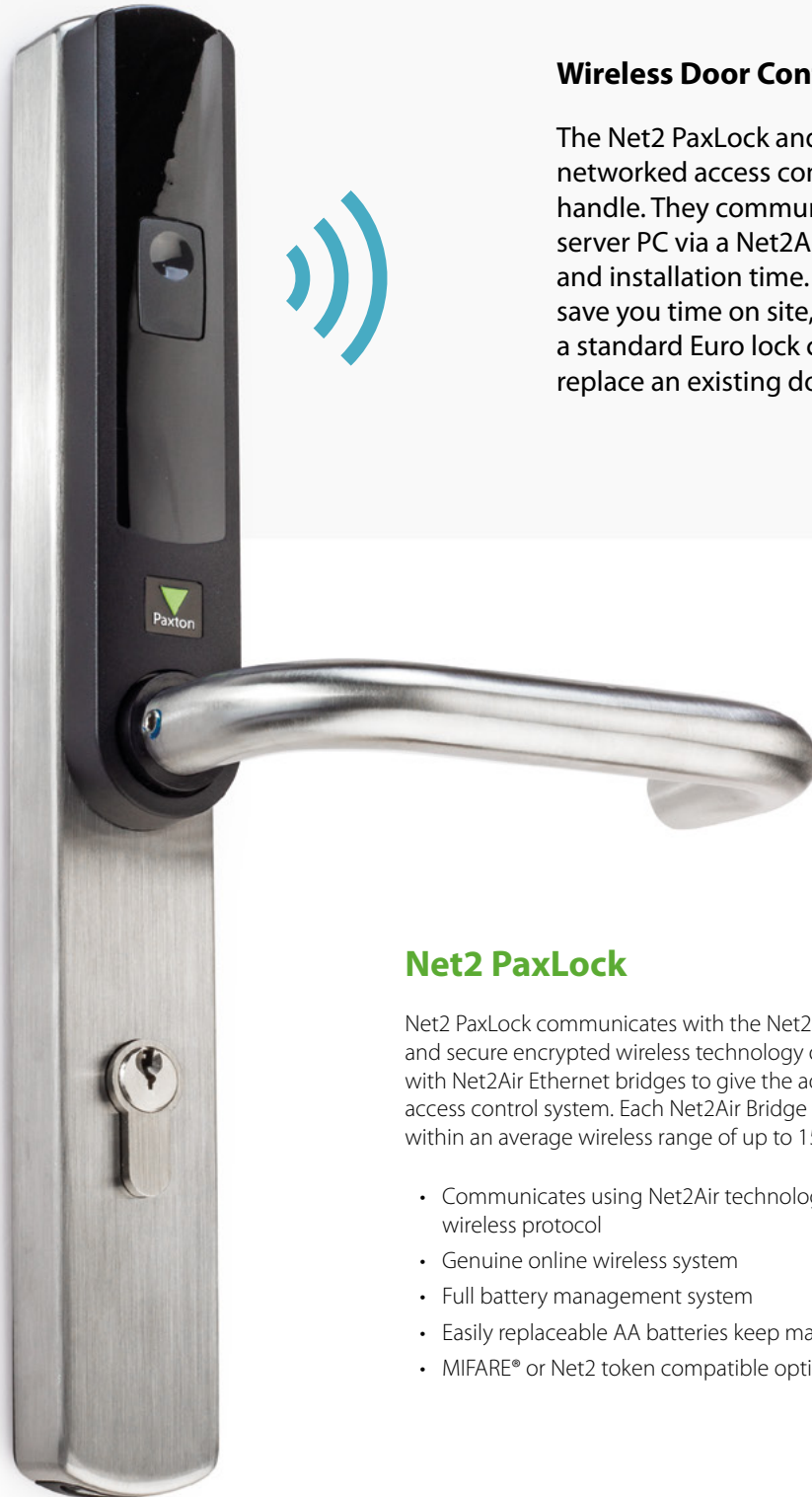


...and more

View the full range of our readers on our website or in the Product Selection Guide.

Use this link:
<http://paxton.info/3210>





Wireless Door Controllers

The Net2 PaxLock and PaxLock Pro are wireless networked access control solutions in a door handle. They communicate wirelessly to the server PC via a Net2Air Bridge, reducing cabling and installation time. The PaxLock range will save you time on site, they come ready to fit a standard Euro lock case meaning they can replace an existing door handle quickly.

Net2 PaxLock

Net2 PaxLock communicates with the Net2 server PC using the low power and secure encrypted wireless technology of Net2Air. It is designed for use with Net2Air Ethernet bridges to give the advantages of a wireless networked access control system. Each Net2Air Bridge can detect Net2 PaxLock units within an average wireless range of up to 15m.

- Communicates using Net2Air technology, Paxton's secure and reliable wireless protocol
- Genuine online wireless system
- Full battery management system
- Easily replaceable AA batteries keep maintenance to a minimum
- MIFARE® or Net2 token compatible options are available



No separate power supply needed



No wiring necessary



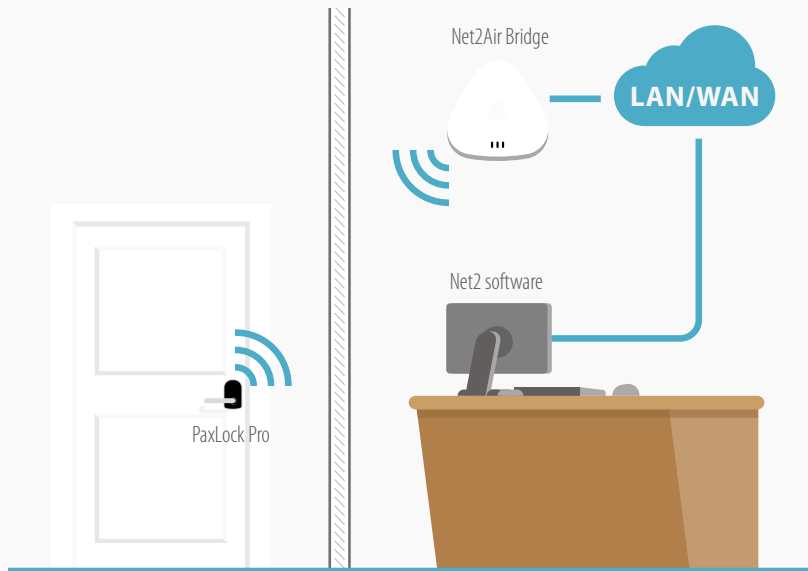
Token options



Available with or without key override



AA battery operated



NEW PRODUCT

PaxLock Pro

PaxLock Pro is the latest addition to Paxton's range of wireless access control solutions. The design is compatible with any DIN standard locks for a quick and simple installation. It's smart, compact appearance and standalone or networked operation means it can be used in more applications than ever before.

- Standalone/Networked wireless access control system
- Simple upgrade path from standalone to networked
- Dual-frequency proximity reader - Paxton, MIFARE®, EM, HID®Prox
- Communicates using Net2Air technology
- EN179 Certified for emergency exits
- FD30 and FD60 certified for fire doors

Available colours: White Black

Internal or external version available

UPDATED

Net2Air Bridge

The Net2Air Bridge communicates between the Net2 PC and wireless control units. It has a low profile which can be wall or ceiling mounted for a quick and simple installation.



Standalone or networked

IP55

External version available

IK10

Impact rated

DIN

Compatible with standard locks



5 Year guarantee

Net2 Entry

Net2 Entry is our straightforward door entry system that works standalone or when used alongside Net2 access control. Net2 Entry can be used to allow day-to-day access for users who have a token, PIN or code. Net2 Entry allows a person inside a building to identify a visitor via a video monitor before they decide whether to grant or deny entry via the external door.

The versatile grouping feature enables smart management of multi-tenant buildings and sites with fenced perimeters. The intuitive panel allows you to set up the display to show occupants by name, for straightforward building management. The system is a highly scalable solution, allowing expansion of up to 100 panels and 1000 monitors.



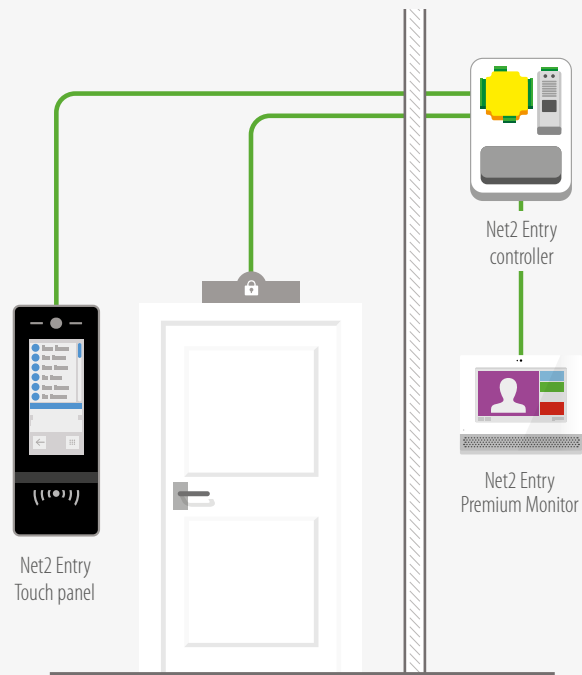
Quick and Easy installation

- Just 3 components that auto detect on setup – monitor, panel and control unit
- Scalable system – expands using a standard PoE extension switch
- No need for specialist wiring diagrams
- Multiple panel options – flush mount, surface mount and surface mount with rain hood
- Intuitive user interface
- Secondary camera integration for extra security
- SIP compatibility – the door can be answered from smartphone, tablet or PC

NEW Net2 Entry now works Standalone

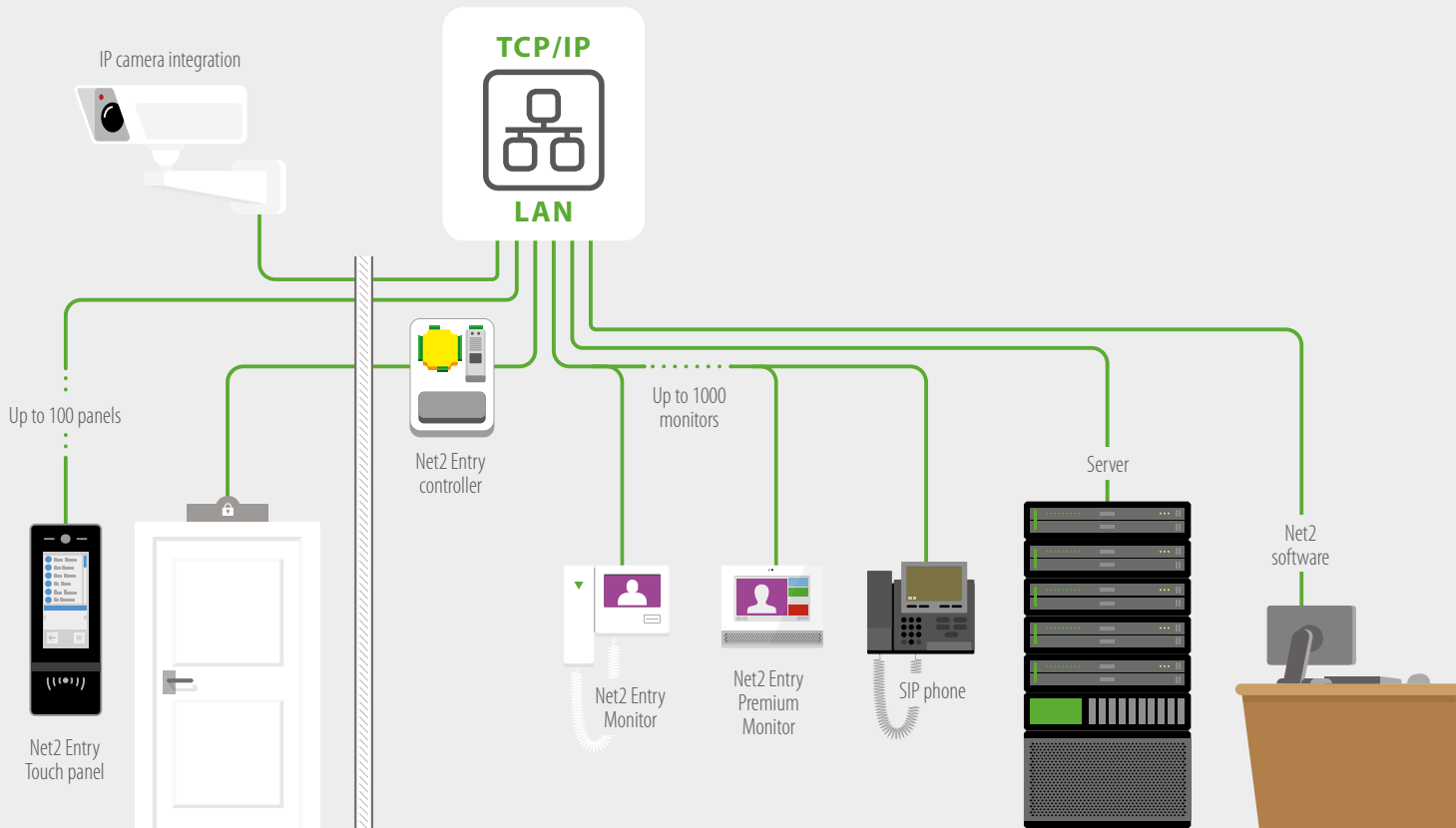
Our video door entry system now works in standalone mode for a quick, simple installation and easy user management with our standard enrolment and shadow cards. Offer a flexible system that can grow in line with your customers' requirements and be upgraded to an online Net2 solution, with no hidden costs.

- Enable offline token-based access control on any Net2 Entry site
- Simple user management utilising Paxton's standalone functionality
- Upgrade existing standalone sites with video door entry for extra convenience
- Combine with other Paxton standalone products to build an entire easy-to-use system supporting the same tokens across the site
- Use with Standalone card packs



Standalone Net2 Entry system does not require connection to a network or server

NEW FEATURES 2018



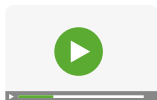
A Simple One Door Solution

Easy to extend via an IP network

- Additional components auto detect when connected, with IPv6 technology
- SIP compatibility – the door can be answered from smartphone, tablet or PC*

Smart, simple user experience

- Intelligent panel design displays occupants by name or if using the touch panel add an image or logo for quick visual recognition in the dynamic address book
- Multiple theme options to personalise the touch panel and premium monitor
- Intuitive user interface for secondary ONVIF compliant camera integration
- Free concierge management, including broadcast messaging available with the premium monitor at no extra cost
- Hi-contrast themes available with the premium monitor and touch panel



INTRODUCTION TO NET2 ENTRY

Watch it here:

<http://paxton.info/3019>

Advanced Features of the Net2 Entry System

Net2 Entry has a range of features, advanced functionality and intuitive user interface to make it suitable for a wide range of sites allowing you to offer your customers the ultimate security solution.

Versatile building management

- Grouping feature enables smarter management of multi-tenant buildings and sites with fenced perimeters
- Pan/tilt camera functionality to capture an angled view, for a diverse range of locations

Suitable for a wide range of sites

- Multi-format reader – reads Paxton and MIFARE® token technology
- The standard panel features a high contrast backlit keypad
- Two-way video available between the premium monitor and touch panel
- Line-out for T-Loop antenna built into the touch panel and premium monitor for users with hearing aids

* 3rd party app required



Net2 Entry panels

Net2 Entry Standard panel *

The anthracite grey standard panel suits a range of environments with its simple and robust IK08 rated design.



Net2 Entry monitors

Net2 Entry monitor

Smart and simple design with colour touchscreen. Can be used via handset for private calls or in hands free mode.



Net2 Entry Vandal Resistant panel *

IK10 impact rated - made from marine grade stainless steel to meet the most demanding environments.



NEW

Net2 Entry Premium monitor

Free concierge management and several personalisation options available with built in themes.



NEW

Net2 Entry Touch panel *

Capacitive 7-inch colour touch screen with customisable options and two way camera when used with the Net2 Entry Premium monitor.



Net2 Entry controller

Conduit between the monitor and the panel in the system.



* Indicates readers that have functionality to read HID™ 125kHz Proximity or HID™ Wiegand tokens, when enabled using Genuine HID Technology™ 125kHz. Proximity activation licence cards or Wiegand activation licence cards, sold separately.



Net2 Case Studies

The Net2 system can be adapted to meet a range of diverse requirements for you and your customers. We have a range of case study examples covering many different sectors.

See our latest case studies here:
<http://paxton.info/3211>

Who is using Net2?

Here are just a few organisations who are using Net2 on their sites:

Michelin
 Manchester United
 Porsche
 DHL
 Foyles
 Graze
 Ingram Micro
 and more...



Do you have a case study?

A case study can be a fantastic tool to help your customers see the benefit of having access control or video door entry on their site and help you to secure more business in the future.

If you're interested in working with us on a case study, you can get in touch with the Marketing Communications team at marketing@paxton.co.uk



Powerscourt Estate

Co. Wicklow, Ireland

Based in the Wicklow Mountains of Co. Wicklow, Ireland, Powerscourt Estate is a leading visitor attraction with approximately 500,000 visitors every year to the house, estate and golf club. The gardens were voted number three in the World's Top 10 Gardens by National Geographic magazine.

Type of site:

Leisure and heritage site

Number of users/doors:

- 11 doors
- Golf club – 900 members
- Hotel guests – 50-60 per week
- Gardens – 1,000-1,500 visitors per day in peak season

Solution required:

- Control access to the estate gardens, golf club and properties
- Integration with the tilling system

Paxton products used:

- Net2 Entry System
- Net2 plus Controllers
- P50 MIFARE® Reader
- Proximity Readers with Genuine HID Technology™
- TOUCHLOCK Vandal Resistant Metal Keypad

Integration:

Intreba - software conduit to integrate the tilling system

Result:

- Integrated tilling and security system
- Access control at the golf club
- Report running between the estate management and the hotel



Islington on the Green

London, UK

Islington on the Green is a residential complex consisting of 70 modern, high specification apartments. Based in the heart of Islington, these properties boast all the benefits of a central Islington location, whilst maintaining the security of a private development with concierge.

Type of site:

Residential

Number of users/doors:

- 71 doors
- 150 users

Solution required:

- Manage and control access to the building and individual apartments
- Two way visual verification of visitors
- Secure access control system

Paxton products used:

- Net2 Entry Premium Monitor
- Net2 Entry Touch Panel
- Net2 Software

Result:

- Simple to use door entry system
- Smart, modern hardware to suit the building's exterior and interior
- Flexible management, property owners and residents to control site access
- Concierge management



Rush Fitness

Uxbridge, UK

Rush Fitness are a modern gym that offers 24/7 access to their members, in a variety of locations across the UK. Providing an abundance of state of the art equipment, dedicated teams of fitness professionals, and a wide range of exercise classes, Rush Fitness are dedicated to giving their members the best fitness experience possible. As a 24 hour-a-day facility, it is important that gym members are able to access the site at all hours.

Type of site:

Health & Leisure Facility

Number of doors:

- 5 doors

Solution required:

- Prevent members sharing access credentials
- Self-enrolment system for members

Paxton products used:

- Net2 Software

Integration:

ievo ultimate™ biometric readers

Result:

- Biometric security solution to combat PIN sharing
- Prevent non-members gaining access to site
- Simple system easily adopted by staff and members



Sky Deutschland

Teltow, Germany

Sky Deutschland is a German media company operating a Direct Broadcast Pay TV platform in Germany, Austria and Switzerland, and is part of the international Sky PLC. The Sky Deutschland Customer Service Centre, located just outside of Berlin in Teltow employs over 400 staff who work onsite.



Type of site:

Commercial – offices and call centre

Number of users/doors:

- Over 400 users
- 15 doors

Solution required:

- User friendly interface
- Simple to manage
- Control the movement of people

Paxton products used:

- Net2 Pro Software
- Net2 plus with PoE
- P50 Reader

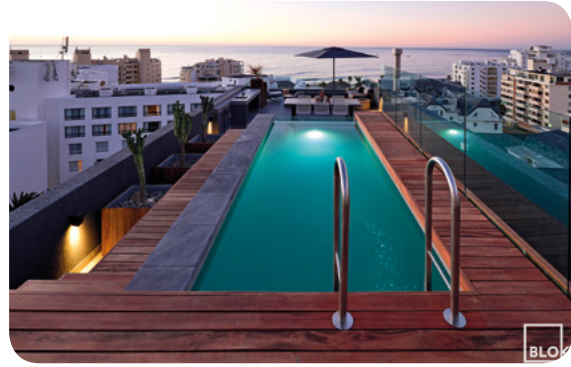
Integration:

SAP SE

Result:

- Control of staff and visitor areas
- Roll call for site evacuation
- Time tracking and integration with payroll using live data

*The Sky trademarks are the property of Sky International AG and are used under license.



Blok Developments

Cape Town, South Africa

Blok Developments is an urban property developer operating in Cape Town's Atlantic Seaboard and CBD. Their thoughtfully designed and detail orientated apartments are built to make a lasting contribution to the neighbourhoods they develop in.

Type of site:

Residential

Number of users/doors:

- 12 doors
- 4 developments

Solution required:

- Video intercom for visual visitor authentication
- Full audit log of those entering and exiting the site
- Simple token management system

Paxton products used:

- Net2 plus Controller
- Net2 Entry Monitor
- Net2 Entry Vandal Resistant Panel
- Proximity Metal Keypad, MIFARE® - KP75
- Proximity Metal Reader
- Proximity Marine Reader

Integration:

Lift integration for penthouse access

Result:

- Increased security solution across all developments
- Flexible management enabling property owners to control site access
- Remote management via network connection

Integrations

Net2 software is designed to easily integrate with other security systems, so you can offer your customers a complete solution. By integrating with other security systems your customers can enjoy more streamlined security for their building

BESPOKE INTEGRATIONS

i The Paxton Software Development Kit (SDK) is free to download for C# developers with no NDA to sign, and is supported via a dedicated software development forum.



Intruder alarm

- Save time by integrating Net2 with your intruder alarm and reduce false alarms.
- Control your intruder and access systems as one, across different areas of the building.



Fire alarm

- Integrate Net2 with your fire alarm and program your system to automatically open fire doors in the event of an emergency to improve safety.



CCTV

- Streamline your Net2 system with CCTV for a quick, efficient way to view footage linked to specific access events or doors.
- Review CCTV footage from within your Net2 system.



Roll call and muster

- Set your system to generate an automatic roll call report when the fire alarm goes off. This helps to identify exactly who is safe once the building has been evacuated.





Biometrics

- Net2 integrates with leading biometric readers, allowing enrolment of biometric data within Net2.
- Open up new market opportunities from high security sites by offering biometric integration with Net2 access control.



Paxton Approved Integrations

ANPR

Club Management




Site Management



Biometrics











PSIM
(Physical Security Information Management)








Key Management

CCTV Integration
(built into Net2)










by Schneider Electric



Visitor Management








Active Directory




Video Management






ip cctv security & surveillance









Innovation with integrity



An OnSSI Company

Intruder Integration
(built into Net2)



Designed to Perform

Roll Call & Mustering



Time and Attendance





OEM Bespoke Products




For more information visit paxton.info/3215

Free installer training

We offer practical training for installers for our complete range of networked, standalone and door entry products. Sessions are designed to provide you with the essential knowledge needed to install Paxton products quickly and efficiently.

- Ensure accurate installation
- Reduce time on site
- Courses are free of charge
- Materials and equipment provided

For more information and to book a session, go to <http://paxton.info/3212>.

End-user training is also available; for more information and pricing, contact training@paxton.co.uk.



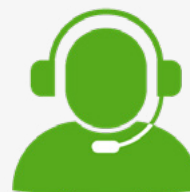
Industry leading technical support

Call Paxton and you will be put straight through to our expert support team, based at Paxton House. Our friendly team are available from 7am-7pm Monday-Friday, and 9am-1pm on Saturdays.

Call: 01273 811011

Email: support@paxton.co.uk

Skype: paxton.support



Sales literature

We offer an extensive range of brochures and sales guides to support you every step of the way, from sales to specification. All documentation is available to download from our website at <http://paxton.info/3213>.

Case studies

Find out how the Net2 system can be adapted to meet a range of diverse requirements by reading our latest case studies. We have a range of examples covering education, healthcare, retail, leisure, commercial and public buildings.

See our latest case studies here:

<http://paxton.info/3214>

Net2 integrations

As UK market leaders in access control, Paxton want to ensure that we are providing the most sophisticated solutions available. We do this by working with quality manufacturers to provide the best solutions and make them available to you. You can see a list of our Net2 integration partners at <http://paxton.info/3215>.



Newsletter sign up

The Paxton Installer is your monthly newsletter, containing the latest news, product information and updates from us. Every month your copy of the Paxton Installer will arrive in your inbox - full of useful information that will make your job easier and help you to win more business.

Sign up now:

<http://paxton.info/3216>

Paxton 5-Year Guarantee and Hassle-Free Returns Policy

We offer a five year guarantee on all our products. If a problem arises, follow these three simple steps and we will get your return sorted:

1. Call into Support if a problem arises on site, Support will then troubleshoot the issue.
2. If the issue cannot be solved, you will be supplied with a returns number.
3. Within 30 days you can either:
 - a. Send the product directly to Paxton with the returns number for an exchange
 - b. Return to your distributor for an exchange



Distributors - Where to Buy

Our UK distributors are listed below. We regularly review their stock and make sure that it is up-to-date, correctly stored and free from defects. To ensure the quality of your Paxton system, we advise that you purchase only through a franchised distributor.



ADI Global Distribution
0161 767 2900
adiglobal.com/uk



Advanced Access Ltd
01604 647555
advanced-access.co.uk



Alarm Supplies
0141 353 1354
alarm-supplies.com



Aldridge Security Ltd
08444 125101
aldrigesecurity.co.uk



Enterprise Security
0207 732 3826
enterprisesecuritydistribution.com



Eurocables Belfast Ltd
02890 777771
eurocables.co.uk



Mayflex UK Ltd
0800 881 5199
mayflex.com



Norbain SD Ltd
North: 01253 894488
South: 0118 9125000
norbain.co.uk



Oprema Ltd
029 2064 1509
oprema.co.uk



Security Supplies Ltd
01489 563 400
security-supplies.co.uk



Easy to quote

Build your Net2 access control system one door at a time.

A range of Net2 products to suit any site requirement.

Scalable system - add doors when the budget is available.



Easy to install

Plug and play solutions that connect directly to the network.

Mix and match Net2 products - they are all designed to work together seamlessly.

Clear instructions and colour coded wiring labels.



Easy to work with

Industry leading technical support.

5-year guarantee and three step returns policy.

Free software upgrades and no multiple licence fees.

Net2 Installer Guide

Paxton Access Ltd

Paxton House
Home Farm Road
Brighton
East Sussex
BN1 9HU
UK

 01273 811011

 support@paxton.co.uk

 www.paxton.co.uk

MIFARE® is a registered trademark of NXP B.V. and is used under license.

The Genuine HID Technology logo is a trademark of HID Global Corporation/ASSA ABLOY AB. Used with permission.

All information and specifications correct at the point of publication, but may be subject to change without notice.