

Network SuperVision Solutions™

For the Copper and Fiber Cabling Infrastructure



Grow your business

Fluke Networks is the leading provider of innovative copper and fiber test solutions. We bring you the most comprehensive line of premises network testing tools for the verification, qualification and certification of copper and fiber optic cabling systems. Our award-winning Network SuperVision Solutions are used by 91 of the Fortune 100, and are recognized worldwide by network owners, installers and maintainers for providing superior visibility. Each tool combines speed, accuracy and ease of use to ensure fast problem resolution and optimum network performance. The more complex and mission-critical network infrastructures become to your customers, the greater value and competitive advantage we bring to your business.

Network SuperVision Solutions – working for you

When you partner with Fluke Networks, you can count on the industry's most reliable and productive cabling test tools for growing your business and staying on top of a fast-moving marketplace. As the industry leader, our test experts are actively involved with technical committees and panels that set new standards. So we're always a step ahead with advances that keep you a step ahead, too. Because we understand the hands-on needs of cabling professionals, we can provide the best in tools, service, training, support and new technologies that improve your bottom line. Our complete family of tools is designed to provide the right fit for each user's experience level and work model, reducing training and increasing productivity. That's Network SuperVision. That's Fluke Networks' promise to you.



1993

PentaScanner®
Industry breakthrough
with the first Cat 5 tester



1995

DSP 100 Series
The first digital cable tester



1997

CertiFiber®
First dedicated multimode
fiber certification tester

Work smarter with superior support, training and technical assistance.

Gold SuperVision™ Support

Our Network SuperVision Gold Support plans give you exclusive services and 24/7 technical assistance. Sign up for our Gold Support plan and you'll enjoy outstanding privileges to protect and add value to your investment in Fluke Networks equipment. They include unlimited tech assistance seven days a week, 24 hours a day via phone or at our web site support center. No fee for repairs on covered items and overnight exchange/loaner units for uninterrupted service. Free software and firmware upgrades. Scheduled calibration and performance verification services. Unlimited web based training and discounted pricing on instructor-led and custom on-site training programs. Access to our extensive Knowledge Base library of operation and application related technical articles. And Gold "members only" special prices and promotions. Some benefits are not available in all countries. See www.flukenetworks.com/goldsupport for more information.

Certified Cabling Test Technician (CCTT) Course

Your installers need top-notch skills to stay competitive – and they'll get them at our one-day CCTT training and certification program. It improves on-the-job effectiveness and productivity in testing, certifying and troubleshooting cabling systems. This BICSI-accredited course includes classroom training, hands-on labs and exams. Contact your country sales organization for programs to meet your training needs. Visit www.flukenetworks.com/CCTT for more information.

Technical Assistance

Have a question? Need help troubleshooting a technical issue? Looking for knowledgeable advice on which Fluke Networks solutions will best meet your network analysis needs? The certified support technicians at our Technical Assistance Center are available to help you.



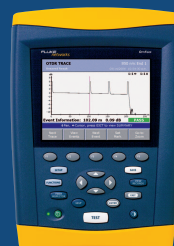
2005 **CableIQ™ Qualification Tester**
First cabling bandwidth tester for network technicians



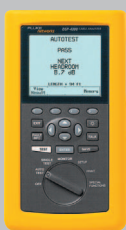
2004 **DTX CableAnalyzer™**
First Level IV cable tester



2004 **IntelliTone™ Toners & Probes**
First digital toner and probe



2002 **OptiFiber® Certifying OTDR**
First handheld certifying OTDR



1999 **DSP-4000 CableAnalyzer™**
Winner of Readers' Choice Award, *Cabling Installation and Maintenance*



2001 **MicroScanner® Pro**
First verification tester with TDR

DTX CableAnalyzer™ Series



Model numbers
DTX-1800
DTX-1200

The DTX CableAnalyzer significantly reduces your total time to certify by improving every aspect of testing – saving you up to four hours every day.

DTX certifies cabling in 12 seconds to performance requirements of TIA/ISO standards (e.g., Cat 5e/6, Class E/D/F). Level IV Accuracy and 900 MHz prepares you to certify cabling for emerging and future network applications such as 10 Gigabit Ethernet.

Advanced troubleshooting diagnostics measure distance to performance defect (NEXT, RL), identify corrective actions and graphically display crosstalk and impedance behavior. Optional on-board fiber modules, 12-hour battery life and fast setup and reporting make the job easier and save time. With DTX, you're ready for whatever the world throws at you – today and tomorrow.

Go to www.flukenetworks.com/seeDTX to take a virtual test drive and use our ROI calculator to figure out how quickly the DTX CableAnalyzer can pay for itself.

DTX – It's all about time.

DTX CableAnalyzer Copper/Fiber Kits

If you certify twisted pair copper and fiber optic cabling, we have a kit for you. These kits bundle a DTX CableAnalyzer set with DTX Fiber Modules so you have what you need to certify both copper and fiber media.



Model numbers
DTX-1800-M DTX-1200-M
DTX-1800-MS DTX-1200-MS

DTX Fiber Modules

Add record-fast fiber certification and fault-location to the DTX CableAnalyzer. Certify multimode and singlemode fiber to TIA/ISO standards. Test attenuation, length and polarity quickly and simply with the one-button Autotest. No other fiber test solution is faster. Troubleshoot problems visually with the on-module VFL.



Model numbers
DTX-MFM DTX-GFM
DTX-SFM

For product information on the DSP-4000 Series and OMNIScanner®2, visit www.flukenetworks.com

DTX Patch Cord Adapters

The DTX Patch Cord Test solution is a simple, cost-effective way to quickly verify whether a patch cord meets TIA/ISO performance specifications. Simply plug in the rugged, compact adapters into your DTX CableAnalyzer, download the test database, and you've got the high-speed, fully automated tester you need to meet TIA patch cord test requirements.



Model number
DTX-PCU6S

DTX Coax Adapters

The DTX-COAX adapters allow you to test coaxial cabling links with the DTX Series CableAnalyzer. Test video distribution cabling or legacy data network coaxial cabling and measure the impedance, the termination status, attenuation (insertion loss) as well as the link length and propagation delay.



Model number
DTX-COAX

DTX Class F Permanent Link Adapters

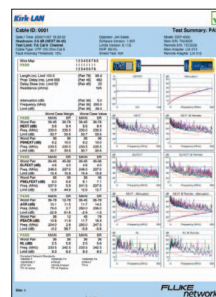
Our new DTX-TERA Adapters for Class F installations deliver a fast, accurate way to certify Class F cabling systems to ISO standards using the TERA connector system. The manufacturer of the TERA Class F connector system endorses and recommends the DTX-1800 with the DTX-TERA Adapters. And they're the only Class F adapters on the market that deliver Level IV Accuracy. So you can be sure false failures are a thing of the past – no matter what frequency range you're testing in.



Model numbers
DTX-TERA

LinkWare™ Cable Test Management Software

Our powerful, secure Windows®-based software works with a wide range of Fluke Networks cable testers to help you organize, edit, print, save and archive your job site test results. Merge test results into an existing database with the option to sort, search and organize by any number of data fields or parameters. Any data uploaded to your computer with LinkWare ensures that you're seeing the true measurements collected by your tester.



Free download at
www.flukenetworks.com/linkware

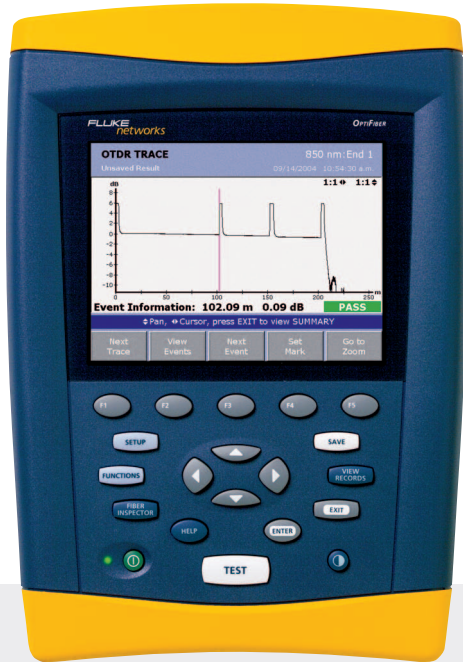
For advanced results analysis, check out LinkWare Stats, a statistical report option for LinkWare. Free demo available at www.flukenetworks.com/lwstats

The leading choice for copper certification

What makes Fluke Networks the preferred choice for copper certification tools among cable installers? Our tools are fast, easy to use and intuitive. Provide repeatable accuracy you can count on. Support everything from Permanent Link and Channel testing to diagnostics that tie all critical data together. And our tools are versatile. Optional fiber test modules turn your copper tester into a powerful fiber certification tester.



OptiFiber® Certifying OTDR

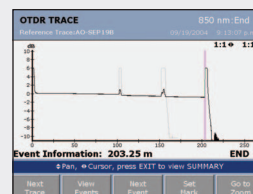


OptiFiber is the first integrated fiber troubleshooting and certification platform for LANs. It's a power-packed advance in network visibility and reporting – in one fast, field-tough tool. Features deadzones as short as 1 meter for pinpoint accuracy, an innovative ChannelMap™ link diagram, automated OTDR analysis, automated OTDR port quality check, one-button Loss/Length certification, FiberInspector™ Pro video endface imaging and full LinkWare compatibility. Now contractors and network owners of all experience levels can quickly and easily troubleshoot short-haul connection-rich links, and certify and document fiber in full compliance with Tier 1 and Tier 2 of TIA TSB140.

OptiFiber Certifying OTDR packages for today's every need. And tomorrow's.

No need to reinvent the wheel every time the industry or customer test and certification requirements change. OptiFiber's modular design can be customized to your current needs – and cost-effectively expanded as your needs change and new modules are released to keep you on top of the industry. OptiFiber is always the best investment you can make. Choose from a family of OptiFiber packages – or create your own.

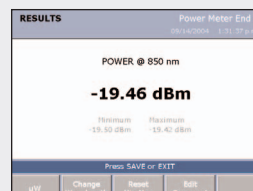
- OF-500 OptiFiber OTDR packages
- OFTM OptiFiber Modules and Video Microscopes
- OFSR OptiFiber Smart Remote Options



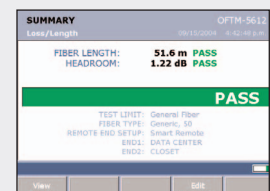
Auto OTDR



ChannelMap



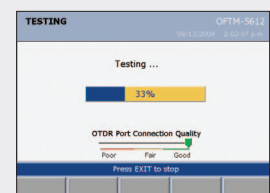
Power Meter



Auto Loss/Length



FiberInspector



OTDR Port Quality Check

DTX Fiber Modules

Add record-fast fiber certification and fault-location to the DTX CableAnalyzer. Certify multimode and singlemode fiber to the TIA/ISO standards. Test attenuation, length and polarity quickly and simply with the one-button Autotest. No other fiber test solution is faster. Troubleshoot problems visually with the on-module Visual Fault Locator (VFL).



Model numbers
DTX-MFM (Multimode)
DTX-GFM (Gigabit Multimode)
DTX-SFM (Singlemode)

CertiFiber®

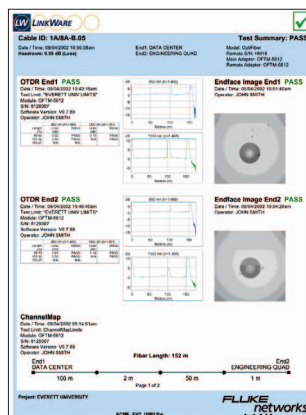
CertiFiber is a dedicated fiber tester that measures optical loss and fiber length and certifies the compliance of multimode fiber optic networks to industry standards. With one-button Autotest and simultaneous dual-wavelength measurement of two fibers, it's the most productive, reliable method of testing premise fiber links. Free LinkWare cable test management software makes it easy to create professional fiber reports.



Model number
8240-04

LinkWare™ Cable Test Management Software

Our powerful, secure Windows-based software works with a wide range of Fluke Networks cable testers to help organize, edit, print, save and archive your job site test results. Merge test results into an existing database with the option to sort, search and organize by any number of data fields or parameters. Any data uploaded by LinkWare to your computer ensures that you're seeing the true measurements collected by your tester. LinkWare software is included with Fluke Networks' OptiFiber Certifying ODTR, and is available as a free download at www.flukenetworks.com/linkware.



For advanced results analysis, check out LinkWare Stats, a statistical report option for LinkWare. Free demo available at www.flukenetworks.com/lwstats

Count on us for Tier 1 and Tier 2 fiber certification

Fluke Networks leads the way in responding to TSB140's two tier certification of installed fibers with loss/length (Tier 1) measurements and OTDR trace (Tier 2). Our DTX Fiber Test Modules and CertiFiber automate Tier 1 certification, and OptiFiber is the first and only test instrument that integrates Tier 1 and Tier 2 support. Fluke Networks' two-tier testing gives installers a complete picture of their fiber installation, while giving network owners proof of a quality installation.

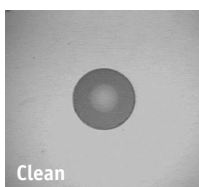


FiberInspector™ Pro Video Microscope



FT600 with dual
250X/400X video probe

FiberInspector Pro is a portable video microscope that provides superior vision to inspect fiber while it's still in place. It works ten times faster than traditional scopes – saving you valuable time inspecting installed fiber terminations in hardware devices and patch panels. Simply insert the dual-magnification video probe and inspect installed fiber connectors through the bulkhead adapters without accessing the backside of the patch panels. High-magnification optics and a bright, large display provide crisp, clear images of microscopic debris and end-face damage to ensure a smooth installation.



High-magnification optics provide crisp, clear images of microscopic debris and end-face damage.

Fiber Viewers

To ensure your termination is smooth, clean and ready for optical transmission, both Fiber Test Installer Packages include the Fluke Networks 200X FT120 multimode Fiber Viewer for inspecting fiber end-face contamination. Fluke Networks offers the FT140

Fiber Viewer with 400X magnification for more fine observations. Our Fiber Viewers contain a special safety filter to protect your eyes from harmful infrared rays.



Model number
FT140 (400x)
FT120 (200x)

VisiFault™ Visual Fault Locator

The laser-powered VisiFault Visual Fault Locator (VFL) traces fibers, verifies continuity and polarity, and helps find breaks in cables, connectors and splices. Continuous and flashing modes for easier identification. Compatible with 2.5 mm and 1.25 mm connectors. Ruggedly constructed for demanding field-testing. Long 80+ hour battery life.



Model number
VisiFault

SimpliFiber®

SimpliFiber is an affordable optical source and power meter kit for accurately measuring the loss of multimode and singlemode fiber links. Its rugged, handheld, ergonomic design is simple to use. Test at multiple wavelengths, save measurement results, and synchronize wavelengths automatically. Generate professional fiber reports with LinkWare PC software.



Model numbers
8250-02 (850/1300 kit, ST)
8250-04 (850/1300 kit, SC)
8251-01 (Source, 1310, ST)
8251-02 (Source, 1550, ST)
8251-11 (Source, 1310, SC)
8251-12 (Source, 1550, SC)

Fiber Test Installer Packages

Whether you require basic fiber link testing capabilities or more advanced documentation and report generation, Fluke Networks' Fiber Test Installer Basic and Pro Packages bring together the high-performance fiber test tools to inspect and test fiber installations quickly and easily.



Model numbers
FTK200FV (Pro Package – shown)
FTK100FV (Basic Package)

Fiber Optic Test Kits

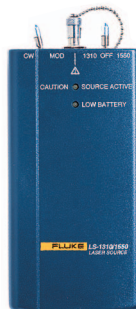
Our complete test kit measures power or loss in optical fiber links used in premise wiring and LAN networks. The DSP-FTK is compatible with the DSP-4000 Series of digital cable analyzers, OneTouch™ Series II Network Assistant and OptiView™ Integrated Network Analyzer. The DTX-FTK is compatible with the DTX CableAnalyzer Series.



Model numbers
DSP-FTK (shown)
DTX-FTK

Laser Source

Our laser power source functions as a companion source to all Fluke Networks fiber vision solutions. The laser source generates both 1310 nm and 1550 nm wavelengths to measure loss on singlemode fiber. Its lightweight, heavy-duty design stands up to rugged field use.



Model number
LS1310/1550

Fiber solutions

for every budget

Every cable installation business has a unique customer base – and a unique path for getting the best return on its tools.

Fluke Networks provides the most flexible options for every budget – making it cost-efficient to get the fiber testing capabilities you need, as you need them. From simple loss test kits that interface with many of our instruments, to dedicated kits for multimode and singlemode fiber, we provide advanced, easy-to-use tools to verify infrastructure performance and ensure high-quality connections.



COPPER VERIFICATION

Verification solutions for basic connectivity testing

For network technicians and contractors who are constantly swapping cubes and stations and making other infrastructure changes, Fluke Networks provides the troubleshooting tools to master cabling installation and subsequent adds, moves and changes. For datacom installers, copper verification has become part of daily testing for good reason: it pays to verify before you certify. Our tools are ideal for verifying Cat 5, 5e, 6, twisted pair, coaxial cabling and security wiring, covering a broad range of physical media that is typically installed in commercial and residential buildings.

MicroScanner™ Pro

The MicroScanner Pro identifies and troubleshoots wiring system installation and physical layer defects – while incorporating active network checking and assessment. Verifying cabling is easy and troubleshooting is fast, thanks to built-in Time Domain Reflectometry (TDR). With the click of a button, wiremap, cable length, room identification (COAX and UTP) and active network capabilities can be instantly determined. Need troubleshooting power? The MicroScanner Pro can find complex wiremap defects such as crossed and split pairs, and provide distance to opens and shorts on bare wire, COAX and twisted pair cabling with TDR. Four inductive tones find hidden cables quickly.



Model numbers
MT-8200-32A (MicroScanner Pro)
MT-8200-24A (MicroScanner Pro VDV Kit)

MicroMapper™

This small, handheld cable tester lets you quickly and easily verify the integrity of Ethernet twisted pair cabling. It provides visibility of opens, shorts, crossed, reversed and split pairs. Just push the TEST button, and MicroMapper will automatically scan all wire pairs for any existing faults in your cable.



Model number
MT-8200-45

620 LAN CableMeter®

Now you can quickly verify that end-to-end connectivity is defect-free. The 620 supports all category twisted-pair cabling links (UTP, STP, and FTP or ScTP), as well as coaxial cabling links to verify continuity and locate wiring/connection errors.



Model number
620

IntelliTone™ Toner and Probe

The IntelliTone Toner and Probe Series from Fluke Networks gives you a digital signal locating technology that's as advanced as the systems you work with. IntelliTone is a breakthrough solution – and the only solution – that locates and isolates even the most elusive, hidden or bundled voice, data and video cables quickly and reliably, even on active networks. Dramatic gains in speed, precision and productivity make analog tools obsolete.



Model numbers
MT-8200-60A (200 Kit)
MT-8200-50A (100 Kit)

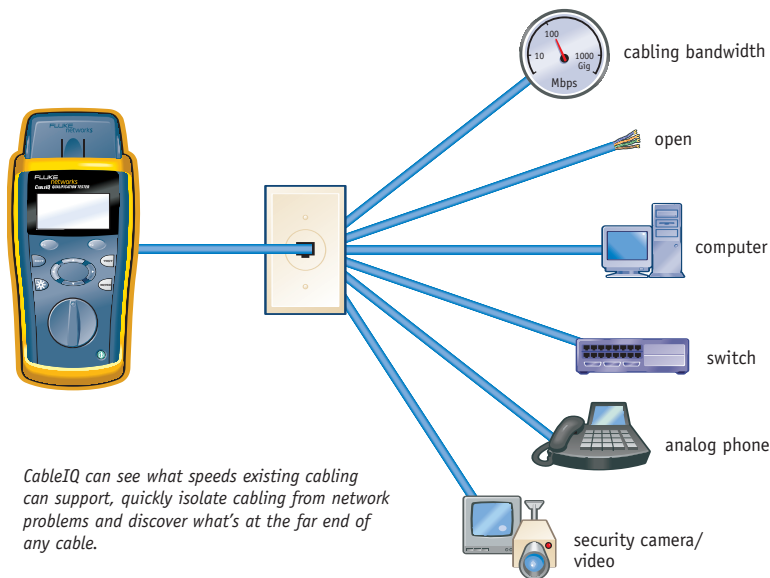
COPPER QUALIFICATION

CableIQ™ Qualification Tester

CableIQ is the first cabling bandwidth tester designed for network technicians who need to troubleshoot connectivity problems and qualify cabling bandwidth. It gives network techs the vision to see whether existing cable is qualified to support 10/100, VoIP or Gigabit Ethernet, quickly isolate cabling from network problems and discover what is at the far end of any cable. It detects speed and duplex settings of attached switches and PCs. Intelligent wiremap graphically shows distance to faults (e.g., pin 1 break at 37 ft). Lightweight, rugged, reliable unit tests all copper cabling. Its ease and power can help network techs close trouble tickets faster and reduce on-call time by up to 30%.



Model number
CIQ-100 CableIQ
CIQ-KIT CableIQ + IntelliTone 200 Probe
and six remote IDs



A closer look at qualification
Qualification test tools include the functions of verification tools, but go further in their capability. Designed specifically for network technicians, the key function of a qualification test tool is its capability to determine if a cabling link can support the bandwidth requirements of the network (e.g. 100BASE-TX, VoIP, Gigabit Ethernet). At the same time, qualification adds powerful diagnostics and troubleshooting capabilities. If a cabling link cannot support the bandwidth requirements of the network, qualification can tell you why with detailed information on the nature and location of the fault – a function that goes well beyond the basic continuity tests of verification.



SYSTEM INTEGRATION

See Fluke Networks' complete line of network troubleshooting solutions to help you grow your business into the future.

LinkRunner™ Network Multimeter

The personal tool for verifying network connectivity and availability. A 4 oz. (113 gram) pocket-size tester that quickly determines **Link**—whether a drop is active, or **Length**—if a cable problem exists, plus **Ping**—testing connectivity to key network devices.



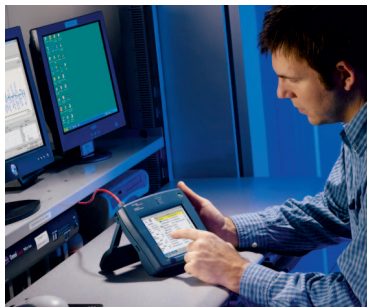
NetTool™ Inline Network Connectivity Tester

Troublesome desktop-to-network connectivity problems? NetTool combines cable, network, and PC configuration testing in one palm-size tool, so you'll have everything you need to quickly resolve even the toughest connectivity problem.



EtherScope™ Network Assistant

With one touch of a button, this handheld tester sees through switches to identify, analyze and resolve network problems immediately. Check out network statistics, analyze trends with baseline data reports, provide web remote control, and perform throughput testing.



Check out our complete line of Network SuperVision Solutions at www.flukenetworks.com

Your future: our focus

At Fluke Networks, we keep our eye on the future so that you don't have to. We know where the industry's going. Just as important, we know how to help you get where you want to go within it – with fast, accurate, easy-to-use solutions that support your growth every step of the way. When you're ready to take your business to the next level, we can help you expand your copper and fiber certification solutions. Step up to network infrastructure diagnostic services. And provide complete network infrastructure maintenance services. Our award-winning hardware and software products, together with unbeatable support and training, give you the Network SuperVision Solutions to master the most important upgrade path of all: **your future.**

NETWORK SUPERVISION

Fluke Networks
P.O. Box 777, Everett, WA USA 98206-0777

Fluke Networks operates in more than 50 countries worldwide. To find your local office contact details, go to www.flukenetworks.com/contact.

©2005 Fluke Corporation. All rights reserved.
Printed in U.S.A. 2/2005 1544745 C-US-N Rev F