

# Armstrong Medical

INDUSTRIES INC.

## 2020



## *NEW Broselow® Pediatric Emergency Tape 2019 Edition*



# Keyless-Entry Auto-Locking Cart

With Optional Proximity Reader

## A-SMART®

*Auto-Locking Mini Cart w/optional Proximity Reader, pg. 37*

*Auto-Locking Cart w/optional Proximity Reader, pgs. 14-15*

*Auto-Locking Narrow Cart w/optional Proximity Reader, pg. 37*



**WIRELESS**  
Auto-Locking Cart  
w/optional  
Proximity Reader and  
**CONTROLLED  
SUBSTANCE  
DRAWER,**  
pgs. 10-13

# Organize Your EMERGENCY DEPT

*With These Essentials*



*Premier™ Aluminum  
Broselow® ColorCode™ Cart,  
see page 41*

*Auto-Locking  
Narrow Cart  
w/optional  
Proximity  
Reader, pg. 37*

*Premier™ Aluminum Solid  
Color Emergency Carts,  
see page 31*



*DUET Suction Unit  
see page 63*



*Broselow Pediatric Resuscitation System  
see pages 65-69*



*Speedsplint™ Disposable Splints  
see page 83*

# A-SMART® CARTS + AREA SALES REP = SATISFIED CUSTOMER A-SMART ADVANTAGE

## CONSIDER THESE VALUE ADDED SERVICES

# Before You Make A Longterm Investment

### *Armstrong Medical Offers:*

- Nationwide coverage (over 40 Sales Representatives)
- Pre-sale support
- Delivery support
- Post-sale support
- ***The Best Overall Value Around***

### FEATURES OF A-SMART® PREMIER™ ALUMINUM CART

- **ALUMINUM Carts** are 45% lighter than Steel
- **Full Extension Ball Bearing Drawer Slides**  
*Ensures that your drawers will open and close smoothly every time.*
- **Quality Aluminum Construction**  
*One-piece outer shell construction providing you with added strength and stability. Locking components consist of zinc plated and galvanized parts.*
- **Double Side-Wall Construction**  
*Armstrong's A-SMART® Carts offer you the added protection of our double side-wall construction. The outer wall adds an extra layer of protection to ensure that your drawers, attached to the inner wall, will always slide smoothly.*
- **Two Interchangeable Locking Systems**
- **Customize Your Locking Configuration**  
*Lock individual drawers, double lock drawers, use multiple types of locks on the same cart.*
- **Slide-Thru Side Shelf**
- **Contour-Fit Plastic Top**
- **Four Vertical Aluminum Corner Mounting Tracks**  
*For easy accessory attachment (eliminates the need for holes).*
- **Stabilizing Frame With Bumper**  
*Casters are moved out from underneath to the outside of the cart. This extra wide base provides your cart with added stability.*
- **18 Colors Available**  
*Allows you flexibility in your carts appearance. Choose colors to specify department or function, or even use multiple colors on the same cart to differentiate drawers.*
- **Highest Quality Swivel Casters (two locking, one tracking)**  
*Quiet, durable, German-made casters. Smoother, easier maneuvering.*

**A-SMART® Carts Are Made In The USA**

ASK YOUR LOCAL REPRESENTATIVE FOR A FREE DEMO OF OUR MOST POPULAR CARTS

**Armstrong Medical** INDUSTRIES INC.

575 Knightsbridge Parkway • P.O. Box 700 Lincolnshire, IL 60069-0700  
800/323-4220 • 847/913-0101 • FAX: 847/913-0138  
[www.armstrongmedical.com](http://www.armstrongmedical.com) [csr@armstrongmedical.com](mailto:csr@armstrongmedical.com)

800/323-4220 • FAX: 847/913-0138

## FEATURES OF A-SMART® CARTS

**NOT ALL FEATURES AVAILABLE ON ALL CARTS**

*See pages 3-7 for more details*



### 18 Designer Colors

SG - Sage Green

MG - Moss Grey

TC - Terra Cotta

SB - Slate Blue

L - Lavender

M - Mauve

Y - Yellow

CB - Taupe

T - Teal

B - Beige

AB - Crash Cart Blue

CR - Cranberry

BG - Blue Grey

HG - Hunter Green

AA - Deep Blue

AR - Red

S - Silver

CW - Cherry Woodgrain

### See the Advantages of A-SMART® Carts

**NOT ALL FEATURES AVAILABLE ON ALL CARTS**

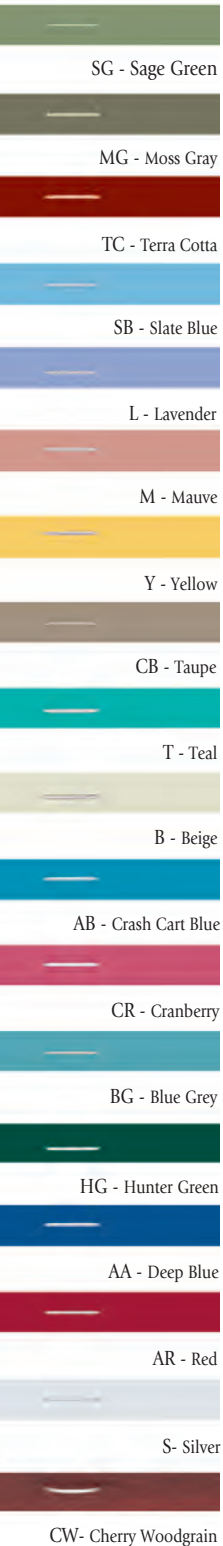
- Lightweight, aluminum construction or sturdy, steel construction
- Multiple locking systems to choose from
- Mounting tracks or holes for easy accessory attachment
- Stabilizing frame with bumper
- Double side-wall construction
- High-quality swivel casters (two locking, one tracking)
- Soft-grip handles
- 18 colors
- Durable powder paint
- Ball bearing drawer slides
- All carts are latex free

### Double Side-Wall Construction

Armstrong's A-SMART® Carts offer you the added protection of our double side-wall construction. The outer wall adds an extra layer of protection to ensure that your drawers, attached to the inner wall, will always slide smoothly.

# Full-Size Aluminum Cart Overview

## 18 Designer Colors



Wireless Auto-Locking Cart with Prox Reader and Controlled Substance Drawer



Premier™ Aluminum Breakaway Locking Cart

### Locking Options:

- Wireless Auto-Locking (pg. 11)
- Wireless Auto-Locking with Controlled Substance Drawer (pg. 12)
- Wireless Auto-Locking with Prox Reader (pg. 12)
- Auto-Locking (pg. 14)
- Auto-Locking with Prox Reader (pg. 15)
- Key Locking (pgs. 23, 25)
- Breakaway Locking (pgs. 31, 33)
- Electronic Touchpad Locking (pg. 35)

### Standard Features:

- Lightweight aluminum construction
- Four vertical aluminum corner mounting tracks for easy accessory attachment
- Slide-thru side shelf (*except for Auto-Locking and Electronic Touchpad Carts*)
- Double side-wall construction that offers you an extra layer of protection to ensure that your drawers, attached to the inner wall, will always slide smoothly
- Contour-fit plastic top

- High-quality swivel casters (two locking, one tracking)
- Stabilizing frame with bumper
- Soft-grip handles
- Durable powder paint
- Ball bearing drawer slides

**Available Drawer Spaces:** 24", 27", 30"

**Available Drawer Heights:** 3" (2<sup>7</sup>/<sub>8</sub>"), 6" (6<sup>1</sup>/<sub>8</sub>"), 9" (9<sup>3</sup>/<sub>8</sub>"), 12" (12<sup>1</sup>/<sub>2</sub>")  
*(If standard drawer arrangements don't suit your needs, slides can be moved 3" up or down for an additional charge per cart)*

**Drawer D x W:** 17<sup>1</sup>/<sub>16</sub>" D x 22<sup>1</sup>/<sub>4</sub>" W

**Available Drawer Front Colors:** Sage Green, Moss Grey, Terra Cotta, Slate Blue, Lavender, Mauve, Yellow, Taupe, Teal, Beige, Crash Cart Blue, Cranberry, Blue Grey, Hunter Green, Deep Blue, Red, Silver, Cherry Woodgrain

# Full-Size Steel Cart Overview

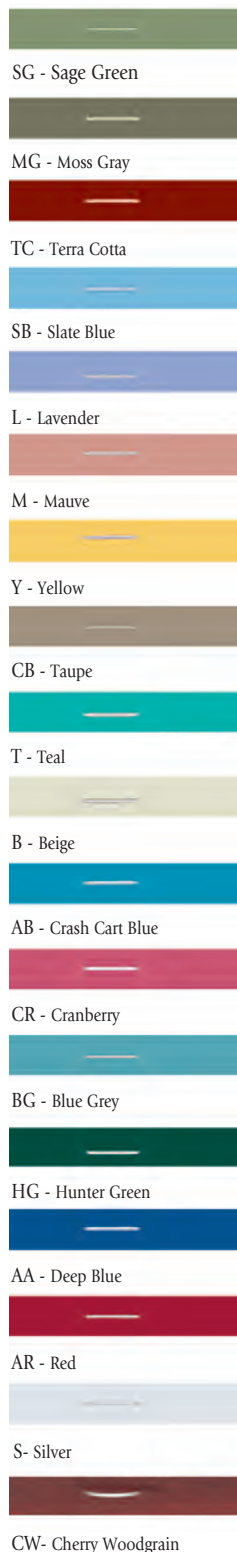
STANDARD Steel Breakaway Locking Cart



STANDARD Steel Key Locking Cart



## 18 Designer Colors



### Locking Options:

- Key Locking (pgs. 22, 24)
- Breakaway Locking (pgs. 30, 32)
- Electronic Touchpad Locking (pg. 32)

### Standard Features:

- Sturdy steel construction
- Mounting holes for easy accessory attachment
- Double side-wall construction that offers you an extra layer of protection to ensure that your drawers, attached to the inner wall, will always slide smoothly
- High-quality swivel casters (two locking, one tracking)
- Stabilizing frame with bumper
- Soft-grip handles
- Durable powder paint
- Ball bearing drawer slides

Available Drawer Spaces: 24", 27", 30"

Available Drawer Heights: 3" (2<sup>7</sup>/<sub>8</sub>"), 6" (6<sup>1</sup>/<sub>8</sub>"), 9" (9<sup>3</sup>/<sub>8</sub>"), 12" (12<sup>1</sup>/<sub>2</sub>")

*(If standard drawer arrangements don't suit your needs, slides can be moved 3" up or down for an additional charge per cart)*

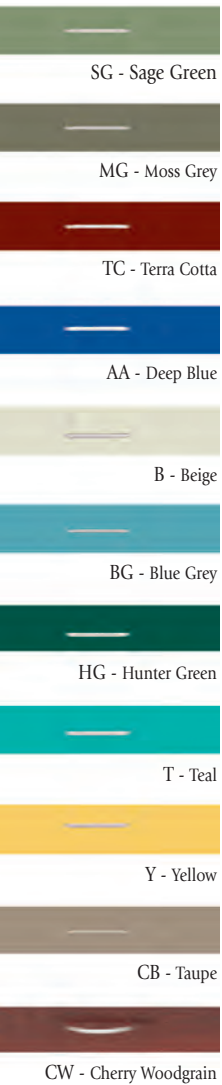
Drawer D x W: 17<sup>1</sup>/<sub>16</sub>"D x 22<sup>1</sup>/<sub>4</sub>"W

Available Drawer Front Colors: Sage Green, Moss Gray, Terra Cotta, Slate Blue, Lavender, Mauve, Yellow, Taupe, Teal, Beige, Crash Cart Blue, Cranberry, Blue Grey, Hunter Green, Deep Blue, Red, Silver, Cherry Woodgrain

**Full-Size Steel Cart Accessories, see pages 44-55**

# Aluminum Narrow Cart Overview

## 11 Designer Colors



Aluminum Auto-Locking Narrow Cart with Prox Reader (shown with optional accessories)



Aluminum Electronic Touchpad Locking Narrow Cart



### Locking Options:

- Wireless Auto-Locking (pg. 10)
- Wireless Auto-Locking with Controlled Substance Drawer (pg. 10)
- Auto-Locking (pg. 37)
- Auto-Locking with Prox Reader (pg. 37)
- Key Locking (pg. 39)
- Electronic Touchpad Locking (pg. 39)

### Standard Features:

- Lightweight aluminum construction
- Mounting holes for easy accessory attachment
- Double side-wall construction that offers you an extra layer of protection to ensure that your drawers, attached to the inner wall, will always slide smoothly
- Contour-fit plastic top
- High-quality swivel casters (two locking, one tracking)
- Stabilizing frame with bumper
- Durable powder paint
- Ball bearing drawer slides

Available Drawer Space: 30"

Available Drawer Heights: 3" (2<sup>7</sup>/<sub>8</sub>"), 6" (6<sup>1</sup>/<sub>8</sub>"), 9" (9<sup>3</sup>/<sub>8</sub>")  
 (If standard drawer arrangements don't suit your needs, slides can be moved 3" up or down for an additional charge per cart)

Drawer D x W: 17<sup>1</sup>/<sub>16</sub>"D x 14<sup>1</sup>/<sub>2</sub>"W

Available Drawer Front Colors: Sage Green, Moss Grey, Terra Cotta, Deep Blue, Beige, Blue Grey, Hunter Green, Teal, Yellow, Taupe, Cherry Woodgrain



Look for the Armstrong A-SMART® label on every cart. **It stands for quality.**  
**MADE IN THE USA**



## Mini Cart Overview

# Big Value In A Small Package

Steel Key Locking Mini Cart



Aluminum Auto-Locking Mini Cart with Optional Prox Reader



### 11 Designer Colors

SG - Sage Green

MG - Moss Grey

TC - Terra Cotta

AA - Deep Blue

B - Beige

BG - Blue Grey

HG - Hunter Green

T - Teal

Y - Yellow

CB - Taupe

CW - Cherry Woodgrain

### Locking Options:

- Wireless Auto-Locking (pg. 10)
- Wireless Auto-Locking with Controlled Substance Drawer (pg. 10)
- Auto-Locking (pg. 37)
- Auto-Locking with Prox Reader (pg. 37)
- Key Locking (pg. 38)
- Electronic Touchpad Locking (pg. 38)

### Standard Features:

- Lightweight aluminum construction or sturdy steel construction
- Mounting holes for easy accessory attachment
- Double side-wall construction that offers you an extra layer of protection to ensure that your drawers, attached to the inner wall, will always slide smoothly
- Contour-fit plastic top
- High-quality swivel casters (two locking, one tracking)

- Bumper guards
- Durable powder paint
- Ball bearing drawer slides

**Available Drawer Space:** 24"

**Available Drawer Heights:** 3" (2<sup>7</sup>/<sub>8</sub>"), 6" (6<sup>1</sup>/<sub>8</sub>"), 9" (9<sup>3</sup>/<sub>8</sub>")

*(If standard drawer arrangements don't suit your needs, slides can be moved 3" up or down for an additional charge per cart)*

**Drawer D x W:** 17<sup>1</sup>/<sub>16</sub>"D x 14<sup>1</sup>/<sub>2</sub>"W

**Available Drawer Front Colors:** Sage Green, Moss Grey, Terra Cotta, Deep Blue, Beige, Blue Grey, Hunter Green, Teal, Yellow, Taupe, Cherry Woodgrain

# Steel 21" Mini Cart and Aluminum Wide Cart Overviews

Steel Electronic Touchpad Locking 21" Mini Cart



## Locking Options:

- Electronic Touchpad Locking (pg. 38)

## Standard Features:

- Sturdy steel construction
- Mounting holes for easy accessory attachment
- Double side-wall construction that offers you an extra layer of protection to ensure that your drawers, attached to the inner wall, will always slide smoothly
- Contour-fit plastic top
- High-quality swivel casters (two locking, one tracking)
- Bumper guards
- Durable powder paint
- Ball bearing drawer slides

**Available Drawer Space:** 21"

**Available Drawer Heights:** 3" (27/8"), 6" (61/8"), 9" (93/8")

*(If standard drawer arrangements don't suit your needs, slides can be moved 3" up or down for an additional charge per cart)*

**Drawer D x W:** 17<sup>1</sup>/<sub>16</sub>"D x 14<sup>1</sup>/<sub>2</sub>"W

**Available Drawer Front Colors:** Sage Green, Moss Grey, Terra Cotta, Deep Blue, Beige, Blue Grey, Hunter Green, Teal, Yellow, Taupe, Cherry Woodgrain

Aluminum Electronic Touchpad Locking Wide Cart



## Locking Options:

- Electronic Touchpad Locking (pg. 36)

## Standard Features:

- Lightweight aluminum construction
- Mounting holes for easy accessory attachment
- Double side-wall construction that offers you an extra layer of protection to ensure that your drawers, attached to the inner wall, will always slide smoothly
- Contour-fit plastic top
- High-quality swivel casters (two locking, one tracking)
- Stabilizing frame with bumper
- Soft-grip handles
- Durable powder paint
- Ball bearing drawer slides

**Available Drawer Space:** 30"

**Available Drawer Heights:** 3" (27/8"), 6" (61/8"), 9" (93/8")

*(If standard drawer arrangements don't suit your needs, slides can be moved 3" up or down for an additional charge per cart)*

**Drawer D x W:** 17<sup>1</sup>/<sub>16</sub>"D x 29<sup>1</sup>/<sub>4</sub>"W

**Available Drawer Front Color:** Beige

# Aluminum WIRELESS Auto-Locking Narrow & Mini Carts

## WIRELESS AUTO-LOCKING



AMC-7AA-CS-RP

### Aluminum Wireless Auto-Locking Narrow Cart

AMC-7Color-RP 6-Drawer 30" Wireless Auto-Locking Narrow Cart

AMC-7Color-CS-RP 6-Drawer 30" Wireless Auto-Locking Narrow Cart with Controlled Substance Drawer

Overall: 45.74"H x 25.24"D x 24.68"W.

Drawer size: 17"D x 15"W.

Drawer heights: 3"H (3), 6"H (2), 9"H.

### Aluminum Wireless Auto-Locking Mini Cart

AMC-5Color-RP 5-Drawer 24" Wireless Auto-Locking Mini Cart

AMC-5Color-CS-RP 5-Drawer 24" Wireless Auto-Locking Mini Cart with Controlled Substance Drawer



AMC-5B-RP

Overall: 36.63"H x 20.69"D x 21.40"W.

Drawer size: 17"D x 15"W.

Drawer heights: 3"H (3), 6"H, 9"H.

## 11 Designer Colors

SG - Sage Green

MG - Moss Grey

TC - Terra Cotta

AA - Deep Blue

B - Beige

BG - Blue Grey

HG - Hunter Green

T - Teal

Y - Yellow

CB - Taupe

CW - Cherry Woodgrain

#### Electronic features include:

- LCD keypad display (shows date, time of day, current battery life, and programmable menu driven display system that prompts you to each additional command)
- Integrated 802.11g/802.11n wireless capabilities
- 5,000 user codes possible\*
- Supervisor code for all programming
- User code for normal, daily use
- Manual or automatic locking
- Battery operated (6 "D" cell batteries)

#### Auto-lock features include:

- Programmable auto re-lock warning with the ability to extend the open time\*- Set a time interval to warn you that the cart is going to lock. When the warning happens, with a simple press of a button, you can choose to keep the cart open
- Time of day relock\*- Set the cart to lock at a specific time of day.
- User specific relock\*- The cart can be set to a default auto-lock time. This setting allows a specific user

to set their own auto-lock time interval to differ from the default.

- Ability to program actual clock at keypad\*
- Ability to limit auto-lock programming to Supervisor Code only\*- Restrict users from manipulating the auto-lock settings.

#### Optional Controlled Substance Drawer:

- Top 3" drawer to be a dual credential Controlled Substance drawer.
- First credential can be either a proximity badge or a pin code, and the second credential is assigned as a pin code.
- Controlled Substance drawer can be locked manually or will auto-relock at the same time interval set for the main cart auto-lock
- Controlled Substance drawer alarm can be set to alarm (audio and visual) when the drawer is left open and/or alarm for an unauthorized entry
- Additional CS drawer key override

*\*Features exclusive to Armstrong Medical Wireless Carts.*

## Other Factory Installed Options

*Readers can not be retrofitted on existing carts.*

#### WEL-PR Proximity Reader

The WEL-PR Proximity Reader will read most low frequency HID® Prox Cards (125 kHz).

#### WEL-PRI iCLASS® Reader

*Not compatible with iCLASS Seos® or iCLASS® Elite cards.*

Contactless smart card read-only reader. Reads identification only from iCLASS® cards.

#### WEL-PRI-SE iCLASS® SE Reader

Reads iCLASS Seos®, iCLASS® SE, standard iCLASS®, MIFARE®, and MIFARE DESFire® cards.

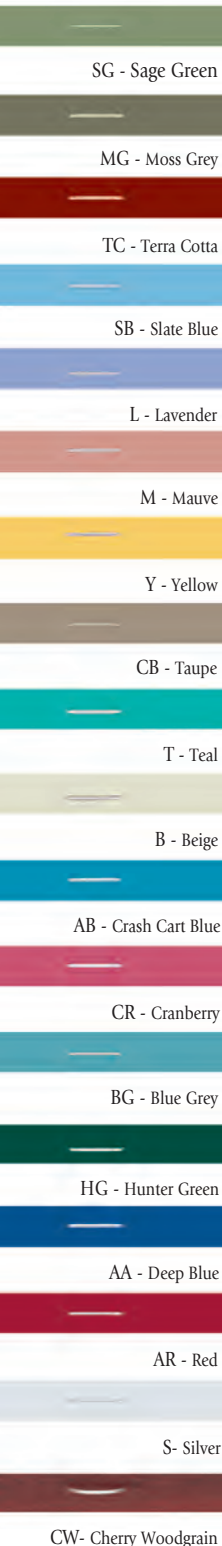
#### PEL-PC HID® Prox Card

PEL-PS Proximity Card Sticker (*makes non-compatible prox cards compatible*)

*See page 13 for Network Software.*

WIRELESS AUTO-LOCKING  
Not MRI Compatible

## 18 Designer Colors



# High Security Cart With Wireless Management

The Armstrong Wireless Auto-Locking Cart offers added security with several programmable auto-lock features. Additional security options include badge access, dual-locking controlled substance drawer with audible alarm, and software audit trail reports for accountability. The LCD display provides the cart status information and allows for on-screen programming. With the integrated 802.11g/802.11n wireless capabilities, managing the carts and users (*up to 5,000*) can be administered remotely in only minutes. **Armstrong Medical has 8 years of experience selling this cart to hundreds of hospitals in the USA.**

## Wireless Auto-Locking Cart

WEL-Color-30-RP 6-Drawer 30" Wireless Auto-Locking Cart

### Cart Features:

- Overall cart dimensions: 48.05"H x 25.20"D x 34.45"W
- Weight: 130 lbs.
- All the quality features of an Aluminum Premier Cart (see page 5)

### Electronic Features include:

- LCD keypad display (shows date, time of day, current battery life, and programmable menu driven display system that prompts you to each additional command)
- Integrated 802.11g/802.11n wireless capabilities
- 5,000 user codes possible\*
- Supervisor code for all programming
- User code for normal, daily use
- Manual or automatic locking
- Battery operated (6 "D" cell batteries)

### Auto-lock features include:

- Programmable auto re-lock warning with the ability to extend the open time\* - Set a time interval to warn you that the cart is going to lock. When the warning happens, with a simple press of a button, you can choose to keep the cart open
- Time of day relock\* - Set the cart to lock at a specific time of day.
- User specific relock\* - The cart can be set to a default auto-lock time. This setting allows a specific user to set their own auto-lock time interval to differ from the default.
- Ability to program actual clock at keypad\*
- Ability to limit auto-lock programming to Supervisor Code only\* - Restrict users from manipulating the auto-lock settings.

**Not Sold Or Serviced Outside The Continental USA.**

**MORE INFORMATION, SEE PAGES 12-13**



WEL-AA-30-RP shown with optional Controlled Substance Drawer and WEL-PR Prox Reader.

Please note for the Armstrong PEL and WEL carts, we suggest using alcohol only for cleaning the electronic keypad surface. Please completely dry keypad and surrounding area after alcohol application.

# Aluminum WIRELESS Auto-Locking Cart

WIRELESS AUTO-LOCKING

Not MRI Compatible

## CONTROLLED SUBSTANCE DRAWER



Get added security for controlled substances with our CS drawer. User-friendly LCD screen allows for easy navigation.



WEL-AA-30-RP shown with optional Controlled Substance Drawer, WEL-PR Prox Reader, PTR-1 Trellis System, ATB-4X & ATB-5X Tilt Bins, and PSB-1 Sharps Container Brackets.

For optimal performance, be sure to check batteries every 6 months.

Not Sold Or Serviced Outside The Continental USA.

### Factory Installed Options

#### WEL-Color-30CS-RP 6-Drawer 30" Wireless Auto-Locking Cart with Controlled Substance Drawer

Incorporates all of the WEL-Color-30-RP features in addition to a Controlled Substance Drawer

#### Controlled Substance Drawer:

- Top 3" drawer to be a dual credential Controlled Substance drawer.
- First credential can be either a proximity badge or a pin code, and the second credential is assigned as a pin code.
- Controlled Substance drawer can be locked manually or will auto-relock at the same time interval set for the main cart auto-lock
- Controlled Substance drawer alarm can be set to alarm (audio and visual) when the drawer is left open and/or alarm for an unauthorized entry
- Additional CS drawer key override

### Other Factory Installed Options

*Readers can not be retrofitted on existing carts.*

#### WEL-PR Proximity Reader

The WEL-PR Proximity Reader will read most low frequency HID® Prox Cards (125 kHz).

#### WEL-PRI iCLASS® Reader

*Not compatible with iCLASS Seos® or iCLASS® Elite cards.* Contactless smart card read-only reader. Reads identification only from iCLASS® cards.

#### WEL-PRI-SE iCLASS® SE Reader

Reads iCLASS Seos®, iCLASS® SE, standard iCLASS®, MIFARE®, and MIFARE DESFire® cards.

#### PEL-PC HID® Prox Card

#### PEL-PS Proximity Card Sticker

*(makes non-compatible prox cards compatible)*



Simply wave the card in front of the reader to open.

\*Please note for the Armstrong PEL and WEL carts, we suggest using alcohol only for cleaning the electronic keypad surface. Please completely dry keypad and surrounding area after alcohol application.

### 18 Designer Colors

SG - Sage Green

MG - Moss Grey

TC - Terra Cotta

SB - Slate Blue

L - Lavender

M - Mauve

Y - Yellow

CB - Taupe

T - Teal

B - Beige

AB - Crash Cart Blue

CR - Cranberry

BG - Blue Grey

HG - Hunter Green

AA - Deep Blue

AR - Red

S - Silver

CW - Cherry Woodgrain

## Accountability & Wireless Management

### Network Software

#### WEL-SW Network Software

- Operates on 802.11g/802.11n frequencies (at designated check-in intervals)
- Comes with (1) client access license and (1) server license

\*Please call customer service for a complete list of requirements

#### WEL-SWC Additional Single Client Access License

#### Windows Based

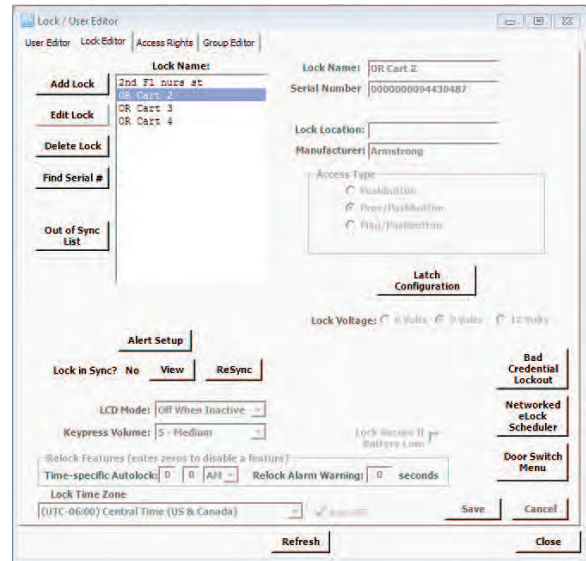
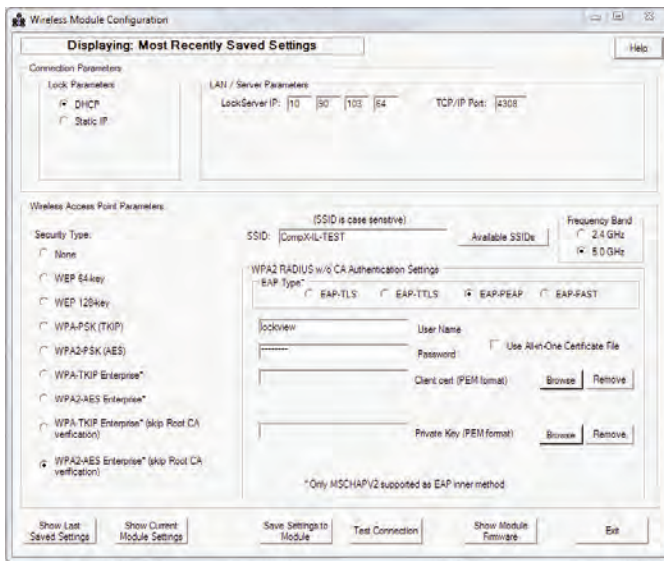
The Network Software allows the administrator to communicate with the Wireless Carts through the facility's 802.11g/802.11n network. As users and settings change, all of the changes can be made by the administrator from the comfort of their desk. As each Wireless Cart checks into the network at the designated check-in intervals, all information will be automatically updated at each and every cart.

Many configurable options including:

- Add, edit, view, and delete users
- Control of cart settings (ex: auto-lock defaults, alarm set-up, keypress volume level, etc.)
- View audit trails which include activity as to when the cart (and CS drawer when applicable) is open, locked, key override activity and alarms
- Email & SMS (Short Message Service) Alert allows for text message, fax, and voice notification system for alarms and low battery notification with provider
- Time interval for PC/WEL cart updating frequency
- eReport notification allows system to automatically send activity reports on a daily, weekly, or monthly basis

It is recommended that your Armstrong Wireless Carts are configured using PSK (pre-shared key).

***\*Customer is responsible for installation. Before purchasing software, it is imperative to contact your IT department concerning installation.***



Lock Audit Trail - Total Records Displayed: 5077

Lock Name	User Name	Type of Access	Status	Alarm Notes	Date of Entry	Time of Entry
OR Cart 2	admin	N/A	Audit trail viewed 04/02/18 10:37 AM		04/02/18	10:37:06 AM
OR Cart 2	Unknown	SETUPMODE	Key Override main ends.		04/02/18	10:35:25 AM
OR Cart 2	Unknown	SETUPMODE	Key Override main.		04/02/18	10:35:10 AM
OR Cart 2	N/A	N/A	Latch1 closed.		04/02/18	10:19:21 AM
OR Cart 2	N/A	N/A	Latch2 closed.		04/02/18	10:17:45 AM
OR Cart 2	Dr. Johnson	PUSHBUTTON	Access granted to CS.		04/02/18	10:17:16 AM
OR Cart 2	Dr. Johnson	PROXCARD	Access granted.		04/02/18	10:17:10 AM
OR Cart 2	N/A	N/A	Latch1 closed.		04/02/18	10:15:03 AM
OR Cart 2	N/A	N/A	Latch2 closed.		04/02/18	10:15:03 AM
OR Cart 2	Dr. Johnson	PUSHBUTTON	Access granted to CS.		04/02/18	10:07:36 AM
OR Cart 2	Dr. Johnson	PROXCARD	Access granted.		04/02/18	10:07:32 AM
OR Cart 2	N/A	N/A	Latch1 closed.		04/02/18	9:31:49 AM
OR Cart 2	N/A	N/A	Latch2 closed.		04/02/18	9:29:45 AM
OR Cart 2	Dr. Smith	PUSHBUTTON	Access granted to CS.		04/02/18	9:25:25 AM

# Aluminum Auto-Locking Carts

**AUTO-LOCKING**  
Not MRI Compatible

## Added Security At An Affordable Price . . .



PEL-CW-30 shown above with optional PEL-PR Prox Reader, AWC-1 Waste Container, and AGB-1 Glove Box Holder.

### DIMENSIONS:

#### PEL-Color-30

Overall: 46.05"H x 25.20"D x 34.45"W (includes bumper, handles, and casters).  
 Drawer size: 17<sup>1</sup>/<sub>16</sub>"D x 22<sup>1</sup>/<sub>4</sub>"W.  
 Drawer: 30" total drawer height.  
 Drawer heights: 3"H (3), 6"H (2), 9"H (1).  
 Weight: 102 lbs.

#### PEL-Color-24

Overall: 39.55"H x 25.20"D x 34.45"W (includes bumper, handles, and casters).  
 Drawer size: 17<sup>1</sup>/<sub>16</sub>"D x 22<sup>1</sup>/<sub>4</sub>"W.  
 Drawer config.: 24" total drawer height.  
 Drawer heights: 3"H (3), 6"H (1), 9"H (1).  
 Weight: 88 lbs.

### Aluminum Auto-Locking Carts

PEL-Color-30 6-Drawer 30" Auto-Locking Cart

PEL-Color-24 5-Drawer 24" Auto-Locking Cart

#### Features:

- Keyless Entry
- 18 colors available
- Lightweight aluminum construction
- Master code for all programming
- Access code for normal, daily use
- Up to 250 user codes possible
- Manual or automatic locking
- Auto-Lock Timer can be set from 1 to 998 minutes, or it can be shut off so that the cart never auto-locks
- Auto-Lock Timer programming can be limited to master code only
- Battery operated; never needs to be plugged into an outlet
- "Low Battery" indicator light
- Manual key override for emergency access
- All the quality features of an Aluminum Premier™ Cart (except Slide-Thru Side Shelf)

For optional software, see page 15.

**Not Sold Or Serviced Outside The Continental USA.**

**For optimal performance, be sure to check batteries every 6 months.**



PEL-B-24

### 18 Designer Colors

- SG - Sage Green
- MG - Moss Grey
- TC - Terra Cotta
- SB - Slate Blue
- L - Lavender
- M - Mauve
- Y - Yellow
- CB - Taupe
- T - Teal
- B - Beige
- AB - Crash Cart Blue
- CR - Cranberry
- BG - Blue Grey
- HG - Hunter Green
- AA - Deep Blue
- AR - Red
- S - Silver
- CW - Cherry Woodgrain

**\*Please note for the Armstrong PEL and WEL carts, we suggest using alcohol only for cleaning the electronic keypad surface. Please completely dry keypad and surrounding area after alcohol application.**

**A representative sample of this Auto-Locking Cart was tested to comply with FCC Part 15.**

**Manufactured to ISO 9001:2015 certified standards.**

## ... With Optional Proximity Reader.

Think *LIGHT*.

### Optional Factory Installed Proximity Reader

PEL-PR Proximity Reader

PEL-PC HID® Prox Card

PEL-PS Proximity Card Sticker

*(makes non-compatible prox cards compatible)*

Simply wave the card in front of the reader to open. Lock the cart by pressing the lock button or set the Auto-Lock Timer for anywhere from 1 to 998 minutes. The Proximity Reader will read most low frequency HID® Prox Cards (125 kHz).

The Proximity Reader is a factory installed option on the Auto-Locking Carts only. This upgrade must be noted at the time of purchase. The Proximity Reader can not be retrofitted on existing carts. Electronic capabilities include all the features of the Auto-Locking Carts.

**NOTE: If you wish to use your current HID® cards, or purchase new cards or stickers, each card must be made available to be programmed individually into each cart.**

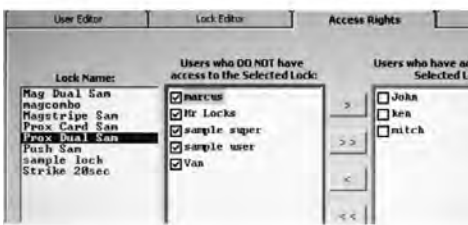
*For optimal performance, be sure to check batteries every 6 months.*

\*Please note for the Armstrong PEL and WEL carts, we suggest using alcohol only for the electronic keypad surface. Please completely dry keypad and surrounding area after alcohol application.



PEL-B-24 shown above with optional PEL-PR Prox Reader

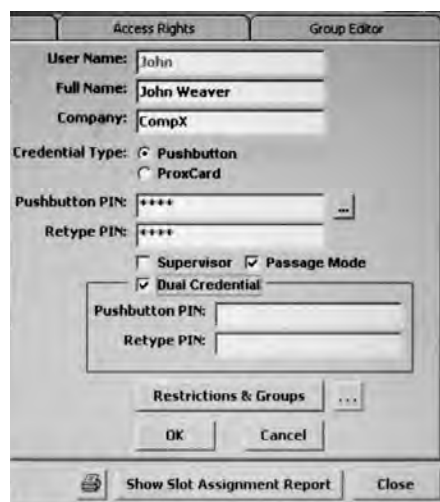
### Auto-Locking Cart Software



Access Rights

Lock Name	User Name	Type of Access	Status	Date of Entry	Time of Entry
magcombo	sample super	PUSHBUTTON	Access Granted	07/30/04	3:00:22 PM
magcombo	marcus	PUSHBUTTON	OK - PIN Required	07/30/04	3:00:20 PM
magcombo	marcus	PUSHBUTTON	Denied-Restrictions	07/30/04	2:59:32 PM
magcombo	marcus	PUSHBUTTON	Denied-Restrictions	07/30/04	2:54:04 PM
magcombo	sample super	PUSHBUTTON	Access Granted	07/30/04	2:52:28 PM
magcombo	marcus	PUSHBUTTON	OK - PIN Required	07/30/04	2:52:36 PM
magcombo	sample super	PUSHBUTTON	Access Granted	07/30/04	2:52:22 PM
magcombo	marcus	PUSHBUTTON	OK - PIN Required	07/30/04	2:52:18 PM
magcombo	sample super	PUSHBUTTON	Access Granted	07/30/04	2:51:28 PM
magcombo	marcus	PUSHBUTTON	OK - PIN Required	07/30/04	2:51:20 PM

Access Log



User Editor

### PEL-SW Auto-Locking Cart Software\*

Software is Windows™ based and requires a USB connection. It allows you to add, edit, view, and delete users, supervisors, and specific carts (see screenshot examples to the left). The access log can display the time of entry by each assigned user. You may also create user groups, and restrict users by specified times of the day or days of the week.

**\*Customer is responsible for installation. Before purchasing software, it is imperative to contact your IT department concerning installation.**



# Steel & Aluminum Electronic Touchpad Carts

ELECTRONIC TOUCHPAD LOCKING

## NURSE SERVER/BEDSIDE Carts



### Aluminum Electronic Touchpad Locking Narrow Cart

AMC-3Color-E 6-Drawer 30" Electronic Touchpad Locking Narrow Cart

Beige shell with eleven drawer colors available (see page 39).

#### Features:

- Aluminum construction; weighs only 90 lbs.
- Stabilizing frame w/ bumper
- Plastic top
- Four 5" swivel casters (two with brake and one tracking)
- Electronic Touchpad locking with key override

Overall: 43.81"H x 25.23"D x 24.68"W (includes bumper and casters).

Drawer size: 17"D x 15"W.

Drawer heights: 3"H (3), 6"H (2), 9"H (1).

### Steel Five-Drawer 24" Electronic Touchpad Locking Mini Cart

AMC-1Color-E 5-Drawer 24" Electronic Touchpad Locking Mini Cart with Key Override

Beige shell with eleven drawer colors available (see page 38).

Overall: 35.07"H x 20.61"D x 21.35"W.

Drawer size: 17"D x 15"W.

Drawer heights: 3"H (3), 6"H, 9"H.

Weight: 103 lbs.

Four 3" swivel casters (two with brake and one tracking)

### Steel Four-Drawer 21" Electronic Touchpad Locking Mini Cart

AMC-21Color-E 4-Drawer 21" Electronic Touchpad Locking Mini Cart with Key Override

Beige shell with eleven drawer colors available (see page 38).

Overall: 32.12"H x 20.61"D x 21.35"W.

Drawer size: 17"D x 15"W.

Drawer heights: 3"H (2), 6"H, 9"H.

Four 3" swivel casters (two with brake and one tracking)

Organize Your Carts With  
Mini/Narrow Cart Trays

See page 52

## Less Running, More Patient Time

### Nurse Server/Bedside Carts



*Stores Under Counters*



AMC-4CB



AMC-6AA



PEL-B-24

#### Aluminum Five-Drawer 24" Auto-Locking Mini Cart

AMC-4Color 5-Drawer 24" Auto-Locking Mini Cart

Shown with optional Prox Reader.

Beige shell with eleven drawer colors available (see page 37).

See page 14 for Auto-Locking details.

#### Dimensions:

Overall: 34.60"H x 20.70"D x 21.40"W.

Drawer size: 17"D x 15"W.

Drawer heights: 3"H (3), 6"H, 9"H.

Weight: 70 lbs.

Four 3" swivel casters (two with brake and one tracking)

#### Aluminum Six-Drawer 30" Auto-Locking Narrow Cart

AMC-6Color 6-Drawer 30" Auto-Locking Narrow Cart

Beige shell with eleven drawer colors available (see page 37).

See page 14 for Auto-Locking details.

#### Dimensions:

Overall: 43.40"H x 25.40"D x 25.30"W (includes bumper and casters).

Drawer size: 17"D x 15"W.

Drawer heights: 3"H (3), 6"H (2), 9"H (1).

Weight: 90 lbs.

Four 5" swivel casters (two with brake and one tracking)

#### Aluminum Five-Drawer 24" Auto-Locking Cart

PEL-Color-24 Five-Drawer 24" Aluminum Auto-Locking Cart

All the quality features of an Aluminum Premier™ Cart (except Slide-Thru Side Shelf)

See page 14 for Auto-Locking details.

Beige shell with eighteen drawer colors available.

Overall: 39.55"H x 25.20"D x 34.45"W (includes bumper, handles, and casters).

Drawer size: 17<sup>1</sup>/<sub>16</sub>"D x 22<sup>1</sup>/<sub>4</sub>"W.

Drawer config.: 24" total drawer height.

Drawer heights: 3"H (3), 6"H (1), 9"H (1).

Weight: 88 lbs.

Four 5" swivel casters (two with brake and one tracking)

*Auto-Locking Carts Not Sold Or Serviced Outside The Continental USA.*

# Steel Electronic Touchpad Supreme Anesthesia Cart Package

ELECTRONIC TOUCHPAD LOCKING

## Electronic Touchpad SUPREME ANESTHESIA PACKAGE

Complete Steel Cart with entire Accessory Package as shown

ATE-AA-6 with ASA-1X Anesthesia Package

ATB-4X  
Tilt Bin Organizer

ATB-5X  
Tilt Bin Organizer

ADO-1  
Divided  
Organizer  
with Lid

PSR-1  
Heavy-duty Railing

AMT-2N  
Modular Drawer  
Tray with  
Ampule Holder  
*(not pictured)*

ATW-3  
Soft-grip Handles

ACL-2  
Long Catheter  
Holder

AC-670S (4)  
3" Divisible Trays  
with Dividers  
(8 short, 4 long)

AC-672S (2)  
5" Divisible Trays  
with Dividers  
(4 short, 2 long)



Look for the  
Armstrong A-SMART®  
label on every cart.  
*It stands for quality.*  
**MADE IN THE USA**



ATR-6N  
Trellis System

ATD-2  
Tape Dispenser

APT-2  
Plastic Top

ALH-12  
Label Holder,  
12/pkg., 7" x 2"  
*(not pictured)*

AWB-5  
Basket with  
AAB-1  
Accessory Bar

AUH-1  
Utility Hooks,  
2/pkg.  
*(not pictured)*

AWC-1  
Waste Container  
with AAB-1  
Accessory Bar

*All Drawers Have  
Full Extensions  
Ball Bearing Slides.*

NOTE: Carts require some assembly.

# Auto-Locking Aluminum Supreme Anesthesia Cart Package

AUTO-LOCKING  
Not MRI Compatible

## AUTO-LOCKING SUPREME ANESTHESIA PACKAGE

Complete Aluminum Cart with entire Accessory Package as shown  
PEL-AA-30 with PEL-PR Prox Reader & PASA-1X Anesthesia Package

ATB-4X  
Tilt Bin Organizer

ATB-5X  
Tilt Bin Organizer

ATW-3  
Soft-grip Handles

AC-670S (4)  
3" Divisible Trays  
with Dividers  
(8 short, 4 long)

AMT-2N  
Modular Drawer  
Tray with  
Ampule Holder

AC-672S (2)  
5" Divisible Trays  
with Dividers  
(4 short, 2 long)

See pages 14-15  
for features of an  
Auto-Locking Cart.

NOTE: Carts require some assembly.

Cart Not Sold Or Serviced Outside The Continental USA.

PTR-1  
Trellis System

ATD-2  
Tape Dispenser

PSR-1  
Tubular Steel  
Railing

APT-EL  
Plastic Top

AWB-5  
Wire Basket

PHP-1 (3)  
Accessory Panels  
(not pictured)

AWC-3  
Waste Container



Look for the  
Armstrong A-SMART®  
label on every cart.  
It stands for quality.  
**MADE IN THE USA**

# Standard Anesthesia Accessory Packages

ELECTRONIC TOUCHPAD

## These Accessory Packages Mount To Any Standard Steel Cart

### Deluxe Anesthesia Accessory Package

DAB-1 Deluxe Accessory Package (*Does not include cart*)

Complete Package as shown, DAB-1 and ATE-AA-6 6-Drawer 30" Electronic Touchpad Locking Cart

- ATR-6N Trellis System
- ATB-4X Four-bin Tilt Bin Organizer
- ATB-5X Five-bin Tilt Bin Organizer
- PSR-1 Tubular Railing
- ASN-3 Collapsible Side Shel
- AWC-1 Waste Container
- AAB-1 Accessory Bar
- APT-2 Plastic Top



PIV-1 I.V. Pole with Brackets, *see page 47*



Look for the Armstrong A-SMART® label on every cart. *It stands for quality.*  
**MADE IN THE USA**



ATE-AA-6

*Bedside Carts, see pages 16-17*

### Economy Anesthesia Accessory Package

SP-1B Economy Accessory Package (*Does not include cart*)

Complete Package as shown, SP-1B and ATE-B-6 6-Drawer 30" Electronic Touchpad Locking Cart

- APT-2 Plastic Top
- AUH-1 Utility Hooks, 2/pkg.
- PSR-1 Tubular Railing
- Two AC-672S 5"H Drug Trays with four Short Dividers and two Long Dividers (fills one drawer)
- Four AC-670S 3"H Drug Trays with eight Short Dividers and four Long Dividers (fills two drawers)



Modular Drawer Trays, *see page 52*



ATE-B-6

NOTE: Carts require some assembly.

## Accessory Packages To Lighten The Load. . .

**Think** LIGHT.

### Deluxe Anesthesia Accessory Package

PDAB-1 Premier Deluxe Accessory Package *(Does not include cart)*

Complete Package as shown, PDAB-1 and PEL-SB-30 6-Drawer 30" Aluminum Auto-Locking Cart

- PNS-1 Shelf Unit
- ATB-5X Five-bin Tilt Bin Organizer
- AGB-1 Glove Box
- PSB-1 Sharps Container Bracket
- AWC-1 Waste Container



### Heine EasyClean LED Laryngoscope Handle

see page 71



Look for the Armstrong A-SMART® label on every cart. *It stands for quality.*

**MADE IN THE USA**



PEL-SB-30 with PEL-PR



PEL-CW-30 with PEL-PR

### Economy Anesthesia Accessory Package

PSP-1B Premier Economy Accessory Package *(Does not include cart)*

Complete Package as shown, PSP-1B and PEL-CW-30 6-Drawer 30" Aluminum Auto-Locking Cart

- AGB-1 Glove Box
- AWC-1 Waste Container
- Four AC-670S 3" Drug Trays with eight Short Dividers and four Long Dividers
- Two AC-672S 5" Drug Trays with four Short Dividers and two Long Dividers



Premier™ Locking Bars, see page 42

See page 5 for Premier™ Cart features and page 14 for dimensions.

# Standard Steel Solid Color Mobile Workstations

KEY-LOCKING

## Solid Colors, Solid Features

All A-SMART® Key Locking Carts come with double side-wall construction, ball bearing drawer slides, a standard stabilizing frame/bumper, and four all-swivel casters (two locking and one tracking).



AA-6

### 6-Drawer 30" Standard Mobile Workstations

AA-6 Mobile Workstation,  
Deep Blue

Drawer sizes: 3"H (3), 6"H (2), 9"H  
Overall: 45.40"H x 25.40"D x 34.15"W  
(includes bumper/handles/casters).



AN-6

### 6-Drawer 30" Standard Mobile Workstations

AN-6 Mobile Workstation,  
Beige

Drawer sizes: 3"H (3), 6"H (2), 9"H  
Overall: 45.40"H x 25.40"D x 34.15"W  
(includes bumper/handles/casters).



AN-5

### 5-Drawer 24" Standard Mobile Workstations

AN-5 Mobile Workstation,  
Beige

Drawer sizes: 3"H (3), 6"H, 9"H  
Overall: 38.90"H x 25.40"D x 34.25"W  
(includes bumper/handles/casters).



Look for the Armstrong A-SMART® label on every cart. ***It stands for quality.***

**MADE IN THE USA**

*Want more accessories? See pages 44-55*



PIV-1 I.V. Pole with Brackets, see page 47



ATR-6N Standard Trellis Rail System, see page 46



ASN-3 Side Shelf, see page 47



APT-2 Standard Plastic Top, see page 47

Standard Anesthesia Packages, pages 18, 20  
Cart Accessories, pages 44-53

See page 6 for Standard Cart features.

# Premier™ Aluminum Solid Color Mobile Workstations

KEY-LOCKING  
Not MRI Compatible

## Premier™ Carts Are Easier To Push and STOP. . .

### Think *LIGHT*.



PKL-B-27

#### 6-Drawer 27" Premier Mobile Workstation

PKL-B-27 Mobile Workstation,  
Beige

Drawer sizes: 3"H (4), 6"H, 9"H  
Overall: 42.95"H x 25.02"D x 34.05"W  
(includes bumper, handles, and casters)



AEF-6 Plastic Divider Set for 6" drawer, see page 54



PKL-B-24

#### 5-Drawer 24" Premier Mobile Workstation

PKL-B-24 Mobile Workstation,  
Beige

Drawer sizes: 3"H (3), 6"H, 9"H  
Overall: 39.55"H x 25.02"D x 34.05"W  
(includes bumper, handles, and casters).

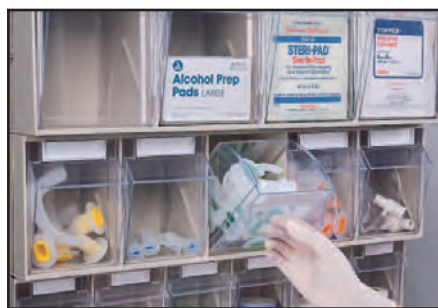


PKL-B-30

#### 6-Drawer 30" Premier Mobile Workstation

PKL-B-30 Mobile Workstation,  
Beige

Drawer sizes: 3"H (3), 6"H (2), 9"H  
Overall: 46.05"H x 25.03"D x 34.05"W  
(includes bumper, handles, and casters).



Tilt Bins, see page 51

Visit Our Website At  
[www.armstrongmedical.com](http://www.armstrongmedical.com)

### Aluminum Cart Features:

- Ball bearing drawer slides
- Slide-thru side shelf
- Plastic top
- Soft-grip handles (2)
- Accessory panels (3)
- Stabilizing frame with bumper
- Locking casters (2)
- Swivel caster TENTE Casters
- Tracking caster
- Key locking bar (length of bar is equal to total drawer space)
- Aluminum mounting tracks

Premier™ Anesthesia Packages, pages 19, 21

Cart Accessories, pages 44-55



# Standard Steel Two-Tone Mobile Workstations

KEY-LOCKING

## Colors To Match Your Decor

When your colors are added to the quality construction of an Armstrong A-SMART® Cart, you've got a Mobile Workstation like no other. **A-SMART®**

### 18 Designer Colors

SG - Sage Green

MG - Moss Grey

TC - Terra Cotta

SB - Slate Blue

L - Lavender

M - Mauve

Y - Yellow

CB - Taupe

T - Teal

B - Beige

AB - Crash Cart Blue

CR - Cranberry

BG - Blue Grey

HG - Hunter Green

AA - Deep Blue

AR - Red

S - Silver

CW - Cherry Woodgrain



AKL-BG-4

### 4-Drawer 30" Standard Mobile Workstation

AKL-BG-4 Mobile Workstation, Blue Grey

Drawer sizes: 3"H, 9"H (3)

Overall: 45.40"H x 25.40"D x 34.15"W (includes bumper/handles/casters).



AKL-SB-6

### 6-Drawer 30" Standard Mobile Workstation

AKL-SB-6 Mobile Workstation, Slate Blue

Drawer sizes: 3"H (3), 6"H (2), 9"H

Overall: 45.40"H x 25.40"D x 34.15"W (includes bumper/handles/casters).



Look for the Armstrong A-SMART® label on every cart. *It stands for quality.*

**MADE IN THE USA**



AKL-MG-5

### 5-Drawer 24" Standard Mobile Workstation

AKL-MG-5 Mobile Workstation, Moss Grey

Drawer sizes: 3"H (3), 6"H, 9"H

Overall: 38.90"H x 25.40"D x 34.25"W (includes bumper/handles/casters).



Modular Drawer Trays, see page 52



Plastic Divider Sets, see page 54



ClearView Security™ Drug Box and Shelf, see page 46

Standard Anesthesia Packages, pages 18, 20

Mobile Workstation Accessories, pages 44-55

# Premier™ Aluminum Two-Tone Mobile Workstations

KEY-LOCKING  
Not MRI Compatible

## Maneuverability At It's Best. . .

**Think** *LIGHT.*



PKL-CB-27



PKL-HG-30



PKL-Y-4

### 6-Drawer 27" Premier Mobile Workstation

PKL-CB-27 Mobile Workstation, Taupe

Drawer sizes: 3"H (4), 6"H, 9"H

Overall: 42.95"H x 25.02"D x 34.05"W (includes bumper, handles, and casters).

### 6-Drawer 30" Premier Mobile Workstation

PKL-HG-30 Mobile Workstation, Hunter Green

Drawer sizes: 3"H (3), 6"H (2), 9"H

Overall: 46.05"H x 25.03"D x 34.05"W (includes bumper, handles, and casters)

### 4-Drawer 30" Premier Mobile Workstation

PKL-Y-4 Mobile Workstation, Yellow

Drawer sizes: 3"H, 9"H (3)

Overall: 46.05"H x 25.03"D x 34.05"W (includes bumper, handles, and casters)

### 5-Drawer 24" Premier Mobile Workstation

PKL-SB-24 Mobile Workstation, Slate Blue

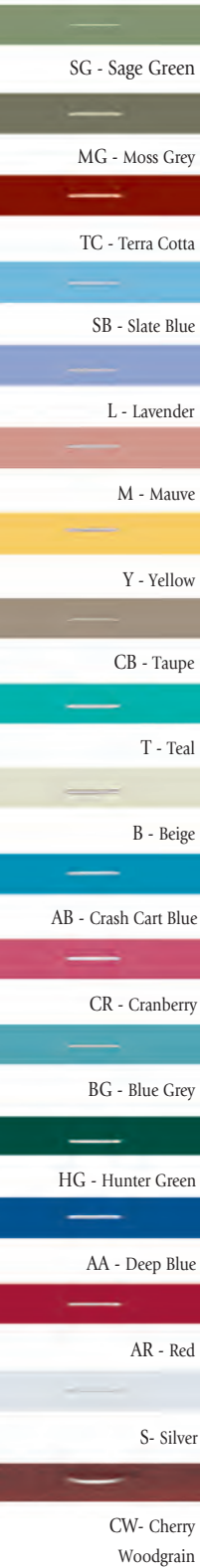
Drawer sizes: 3"H (3), 6"H, 9"H

Overall: 39.55"H x 25.02"D x 34.05"W (includes bumper, handles, and casters)



PKL-SB-24

## 18 Designer Colors



Look for the Armstrong A-SMART® label on every cart. ***It stands for quality.***  
**MADE IN THE USA**

### Aluminum Cart Features:

- Ball bearing drawer slides
- Slide-thru side shelf
- Plastic top
- Soft-grip handles (2)
- Accessory panels (3)
- Stabilizing frame with bumper
- Locking casters (2)
- Swivel caster Casters
- Tracking caster
- Key locking bar (length of bar is equal to total drawer space)
- Aluminum mounting tracks

Premier™ Anesthesia Packages, pages 19, 21

Cart Accessories, pages 44-55

# Standard Steel Premium Emergency Cart Package

BREAKAWAY LOCKING

## Standard Premium Emergency Package

AR-6 with APE-1X Emergency Package



# Premier™ Premium Aluminum Emergency Cart Package

BREAKAWAY LOCKING  
Not MRI Compatible

## Premier™ Premium Emergency Package

PBL-AR-30 with PAPE-1X Emergency Package

### Double Side-Wall Construction

PDS-1  
Shelf Unit

ATW-3  
Soft-grip Handles

ADV-10N  
Modular Dividers  
for ADT-1

ADT-1  
Drug Tray  
with Lid

AC-670S (4)  
3" Drug Trays  
with Dividers  
(8 short, 4 long)

AC-672S (2)  
5" Drug Trays  
with Dividers  
(4 short, 2 long)

ASU-1  
Suction Unit Holder



PCB-1  
Cardiac Board w/Brackets

PIV-1  
I.V. Pole

APS-5  
Plastic Seals  
(not pictured)

APT-5  
Plastic Top

Slide-thru  
Side Shelf

ALH-12  
Label Holders

AOB-1  
Oxygen Tank  
Bracket

AOS-1  
Hospital Grade  
Outlet Strip

PBR-30  
Breakaway Bar



Look for the Armstrong  
A-SMART® label on every  
cart. *It stands for quality.*  
**MADE IN THE USA**

# Standard Emergency Cart Accessory Packages

## BREAKAWAY LOCKING

### Deluxe Emergency Accessory Package

EB-1 Deluxe Accessory Package *(Does not include cart)*

Complete Package as shown, EB-1 with AR-6 6-Drawer 30" Emergency Cart

- ASN-3 Collapsible Side Shelf
- PIV-1 I.V. Pole with Brackets
- APT-2 Plastic Top
- PSR-1 Heavy-duty Railing
- AOB-1 Oxygen Tank Bracket
- ACB-1 Cardiac Board with Brackets
- APS-5 Plastic Breakaway Seals, 100/pkg.
- AUH-1 Utility Hooks, 2/pkg
- Two AC-672S 5"H Trays with four AC-685S (short) Dividers & two AC-690S (long) Dividers (fills one drawer)
- Four AC-670S 3"H Trays with eight AC-675S (short) Dividers and four AC-680S (long) Dividers (fills two drawers)



Look for the Armstrong A-SMART® label on every cart. ***It stands for quality.***  
**MADE IN THE USA**



AR-6



ABL-AR-6

See page 6 for Standard Cart features and pages 30 & 32 for dimensions.

NOTE: Carts require some assembly.

### Economy Emergency Accessory Package

BE-1 Economy Accessory Package *(Does not include cart)*

Complete Package as shown, BE-1 with ABL-AR-6 6-Drawer 30" Emergency Cart

- PIV-1 I.V. Pole with Bracket
- PSR-1 Heavy-duty Railing
- ACB-1 Cardiac Board with Brackets
- APT-2 Plastic Top
- APS-5 Plastic Breakaway Seals, 100/pkg.
- AOB-1 Oxygen Tank Bracket



ADS-IN, Defib One Shelf with Swivel Top, see page 50



AE-6976 Cart-mounted DUET with Retention Bracket *(requires AHP-3)*, see page 63

# Premier™ Emergency Cart Accessory Packages

**BREAKAWAY LOCKING**  
Not MRI Compatible

## Deluxe Emergency Accessory Package

PEB-1 Deluxe Accessory Package *(Does not include cart)*

Complete Package as shown, PEB-1 with PAR-30 6-Drawer 30" All Aluminum Emergency Cart

- PIV-1 I.V. Pole with Brackets
- PSR-1 Tubular Steel Railing
- AOB-1 Oxygen Tank Bracket
- PCB-1 Cardiac Board with Brackets
- APS-5 Breakaway Seals, 100/pkg.
- Two AC-672S 5"H Trays with four AC-685S (short) Dividers and two AC-690S (long) Dividers
- Four AC-670S 3"H Trays with eight AC-675S (short) Dividers and four AC-680S (long) Dividers



PCB-1 Cardiac Board



ASU-1 Suction Unit Holder, see page 47



PAR-30

Mount either of these accessory packages on any A-SMART® Premier™ Aluminum Emergency Cart

## Economy Emergency Accessory Package

PBE-1 Economy Accessory Package *(Does not include cart)*

Complete Package as shown, PBE-1 with PBL-AB-30 6-Drawer 30" All Aluminum Emergency Cart

- PIV-1 I.V. Pole with Brackets
- PCB-1 Cardiac Board with Brackets *(shown above)*
- AOB-1 Oxygen Tank Bracket
- APS-5 Breakaway Seals, 100/pkg.



Look for the Armstrong A-SMART® label on every cart. ***It stands for quality.***  
**MADE IN THE USA**

See page 5 for Premier™ Cart features and pages 31 & 33 for dimensions



PBL-AB-30

# Standard Steel Solid Color Emergency Carts

BREAKAWAY LOCKING

## Manufactured To ISO 9001:2015 Certified Standards. A-SMART®.



ABL-B-6

### 6-Drawer 30" Standard Emergency Cart

ABL-B-6 Emergency Cart, Beige  
Drawer sizes: 3" (4), 6", 12"

Overall: 45.40"H x 25.40"D x 34.15"W  
(includes bumper/handles/casters).



ABL-B-5

### 5-Drawer 24" Standard Emergency Cart

ABL-B-5 Emergency Cart, Beige  
Drawer sizes: 3" (3), 6", 9"

Overall: 38.90"H x 25.40"D x 34.25"W  
(includes bumper/handles/casters).



ABL-B-4

### 4-Drawer 24" Standard Emergency Cart

ABL-B-4 Emergency Cart, Beige  
AR-4 Emergency Cart, Red

(not pictured)

Drawer sizes: 3" (2), 6", 12"  
Overall: 38.90"H x 25.40"D x 34.25"W  
(includes bumper/handles/casters).



AR-6

### 6-Drawer 30" Standard Emergency Cart

AR-6 Emergency Cart, Red  
Drawer sizes: 3" (4), 6", 12"

Overall: 45.40"H x 25.40"D x 34.15"W  
(includes bumper/handles/casters).



AR-4

### 4-Drawer 24" Standard Emergency Cart

AR-4 Emergency Cart, Red  
Drawer sizes: 3" (2), 6", 12"

Overall: 38.90"H x 25.40"D x 34.25"W  
(includes bumper/handles/casters).



AR-27

### 6-Drawer 27" Standard Emergency Cart

AR-27 Emergency Cart, Red  
Drawer sizes: 3" (4), 6", 9"

Overall: 42.20"H x 25.40"D x 34.25"W  
(includes bumper, handles, and casters)

See page 6 for Standard Cart features.

NOTE: Carts require some assembly.

# Premier™ Aluminum Solid Color Emergency Carts

BREAKAWAY LOCKING  
Not MRI Compatible

## Drawers Always Slide Smoothly With Our Double Side-Wall Construction. . .

### Think *LIGHT*.



PBL-B-27

#### 6-Drawer 27" Premier Emergency Cart

PBL-B-27 Emergency Cart, Beige

Drawer sizes: 3"H (4), 6"H, 9"H

Overall: 42.95"H x 25.02"D x 34.05"W (includes bumper, handles, and casters)



Drug Trays, see page 54



PBL-B-24

#### 5-Drawer 24" Premier Emergency Cart

PBL-B-24 Emergency Cart, Beige

Drawer sizes: 3"H (3), 6"H, 9"H

Overall: 39.55"H x 25.02"D x 34.05"W (includes bumper, handles, and casters)



Tubular Railing, see page 47



PAR-30

#### 6-Drawer 30" Premier Emergency Carts

PAR-30 Emergency Cart, Red

PBL-B-30 Emergency Cart, Beige (not pictured)

Drawer sizes: 3"H (3), 6"H (2), 9"H

Overall: 46.05"H x 25.03"D x 34.05"W (includes bumper, handles, and casters).



Look for the Armstrong A-SMART® label on every cart.  
**It stands for quality.**  
**MADE IN THE USA**

### Aluminum Cart Features:

- Ball bearing drawer slides
- Slide-thru side shelf
- Plastic top
- Soft-grip handles (2)
- Accessory panels (3)
- Stabilizing frame with bumper
- Locking casters (2)
- Swivel caster TENTE Casters
- Tracking caster
- Breakaway locking bar (length of bar is equal to total drawer space)
- Aluminum mounting tracks

Premier™ Emergency Packages, pages 27, 29

Cart Accessories, pages 44-55



# Standard Steel Two-Tone Emergency Carts

BREAKAWAY LOCKING

**Armstrong A-SMART® Two-Tone Carts**  
 come with your choice of 18 colored drawer fronts.



ABL-L-5

### 5-Drawer 24" Standard Emergency Cart

ABL-L-5 Emergency Cart,  
Lavender

Drawer sizes: 3" (3), 6", 9"  
 Overall: 38.90"H x 25.40"D x  
 34.25"W (includes  
 bumper/handles/casters)



ABL-T-4

### 4-Drawer 24" Standard Emergency Cart

ABL-T-4 Emergency Cart,  
Teal

Drawer sizes: 3" (2), 6", 12"  
 Overall: 38.90"H x 25.40"D x  
 34.25"W (includes  
 bumper/handles/casters)



ABL-TC-6

### 6-Drawer 30" Standard Emergency Cart

ABL-TC-6 Emergency Cart,  
Terra Cotta

Drawer sizes: 3" (4), 6", 12"  
 Overall: 45.40"H x 25.40"D x  
 34.15"W (includes  
 bumper/handles/casters)



ABL-B-3

### 3-Drawer 24" Standard Emergency Cart

ABL-B-3 Emergency Cart  
Beige

Drawer sizes: 6"H, 9"H (2)  
 Overall: 38.90"H x 25.40"D x  
 34.25"W (includes  
 bumper/handles/casters)



Look for the Armstrong  
 A-SMART® label on every  
 cart. *It stands for quality.*  
**MADE IN THE USA**

## 18 Designer Colors

SG - Sage Green

MG - Moss Grey

TC - Terra Cotta

SB - Slate Blue

L - Lavender

M - Mauve

Y - Yellow

CB - Taupe

T - Teal

B - Beige

AB - Crash Cart Blue

CR - Cranberry

BG - Blue Grey

HG - Hunter Green

AA - Deep Blue

AR - Red

S - Silver

CW - Cherry Woodgrain



AHP-3 Panel for Cart-  
 mounted DUET Suction Unit  
 (Retention Bracket not included),  
 see page 48



AE-6976 Cart-mounted  
 DUET Suction Unit with  
 Retention Bracket  
 (requires AHP-3), see page 63



ASN-3 Standard Side Shelf,  
 see page 47

Standard Emergency Packages, pages 26, 28

Emergency Cart Accessories, pages 44-55

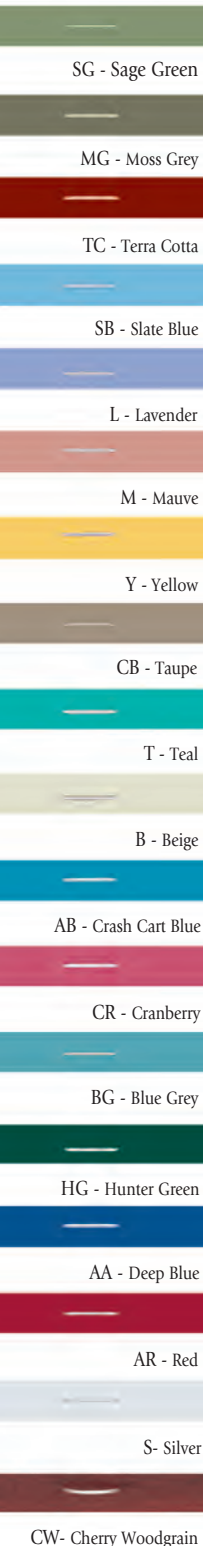
# Premier™ Aluminum Two-Tone Emergency Carts

BREAKAWAY LOCKING  
Not MRI Compatible

## Carts Built To Last Longer!

Think *LIGHT*.

### 18 Designer Colors



PBL-AR-30

### 6-Drawer 30" Premier Emergency Cart

**PBL-AR-30 Emergency Cart, Red**  
 Drawer sizes: 3" (3), 6" (2), 9"  
 Overall: 46.05"H x 25.03"D x 34.05"W (includes bumper, handles, and casters)



PBL-SG-27

### 6-Drawer 27" Premier Emergency Cart

**PBL-SG-27 Emergency Cart, Sage Green**  
 Drawer sizes: 3" (4), 6", 9"  
 Overall: 42.95"H x 25.02"D x 34.05"W (includes bumper, handles, and casters)



PBL-SB-24

### 5-Drawer 24" Premier Emergency Cart

**PBL-SB-24 Emergency Cart, Slate Blue**  
 Drawer sizes: 3" (3), 6", 9"  
 Overall: 39.55"H x 25.02"D x 34.05"W (includes bumper, handles, and casters)



AMT-2N Modular Tray, see page 52



ASU-1 Suction Unit Holder (shown with AE-6975 DUET Suction Unit), see page 47



Look for the Armstrong A-SMART® label on every cart. *It stands for quality.*  
**MADE IN THE USA**

### Aluminum Cart Features:

- Ball bearing drawer slides
- Slide-thru side shelf
- Plastic top
- Soft-grip handles (2)
- Accessory panels (3)
- Stabilizing frame with bumper
- Locking casters (2)
- Swivel caster Casters
- Tracking caster
- Breakaway locking bar (length of bar is equal to total drawer space)
- Aluminum mounting tracks

Premier™ Emergency Packages, pages 27, 29

Cart Accessories, pages 44-55

# Standard Steel Electronic Touchpad Cart

ELECTRONIC TOUCHPAD

Not MRI Compatible

## The Simplest Keyless Option

### 18 Designer Colors

SG - Sage Green

MG - Moss Grey

TC - Terra Cotta

SB - Slate Blue

L - Lavender

M - Mauve

Y - Yellow

CB - Taupe

T - Teal

B - Beige

AB - Crash Cart Blue

CR - Cranberry

BG - Blue Grey

HG - Hunter Green

AA - Deep Blue

AR - Red

S - Silver

CW - Cherry Woodgrain



ATE-CB-6

ATE-CB-6 shown above with optional APT-2 Plastic Top and PSR-1 Tubular Railing.



PIV-1 IV Pole with Brackets,  
see page 47

## Standard Steel Electronic Touchpad Locking Carts

### Features:

- Simple touchpad entry with key override
- 1-8 digits
- Operates on alkaline batteries
- User code is stored when battery power is lost or removed
- Audible low battery indicator
- Continuous alarm sounds when code is incorrectly entered four times
- Stabilizing frame with bumper
- 18 colors available

### ATE-Color-6 Standard Six-Drawer 30" Electronic Touchpad Locking Cart

Drawer sizes: 3"H (3), 6"H (2), 9"H.

Weight: 170 lbs.

Overall: 45.81"H x 25.23"D x 34.08"W

### ATE-Color-5 Standard Five-Drawer 24" Electronic Touchpad Locking Cart (below)

Drawer sizes: 3"H (3), 6"H, 9"H.

Weight: 150 lbs.

Overall: 39.31"H x 25.23"D x 34.08"W

**NOTE: No auto-locking features (control knob must be turned manually to lock and unlock). Carts require some assembly.**



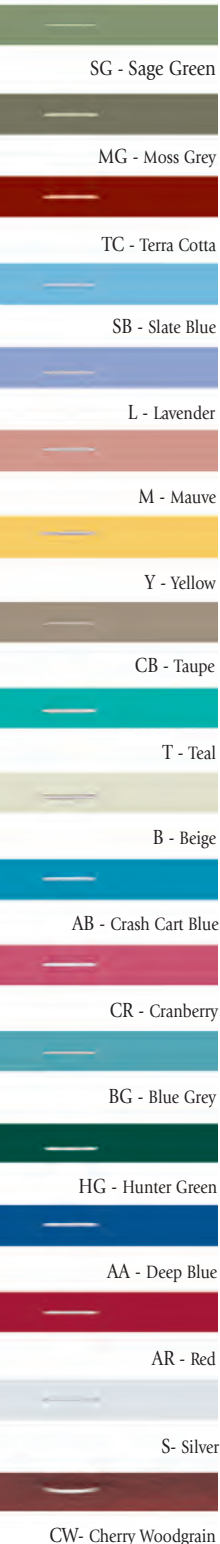
ATE-B-5

# Aluminum ELECTRONIC Touchpad Carts

ELECTRONIC TOUCHPAD  
Not MRI Compatible

## Aluminum ELECTRONIC Touchpad Cart

### 18 Designer Colors



### PPE-Color-30 Six-Drawer 30" Aluminum Electronic Touchpad Cart

Drawer sizes: 3"H (3), 6"H (2), 9"H

Weight: 92 lbs.

Overall: 46.34"H x 25.24"D x 34.45" W

#### Features:

- Simple touchpad entry with key override
- 1-8 digits
- Operates on alkaline batteries
- User code is stored when battery power is lost or removed
- Audible low battery indicator
- Continuous alarm sounds when code is incorrectly entered four times
- Plastic top
- Accessory panels (3)
- Stabilizing frame with bumper
- Aluminum mounting tracks
- 18 colors available

**NOTE: No auto-locking features (control knob must be turned manually to lock and unlock). Carts require some assembly.**



PPE-CW-24

*\* Please note for the Armstrong Electronic Touchpad Carts, we suggest using alcohol only for the electronic keypad surface. Please completely dry keypad and surrounding area after alcohol application.*



PPE-AA-30

PPE-AA-30 shown with optional PSR-1 Railing, ATD-2 Tape Dispenser, PTR-1 Trellis System, and ATB-4X & ATB-5X Tilt Bins

### PPE-Color-24 Five-Drawer 24" Aluminum Electronic Touchpad Cart

Drawer sizes: 3"H (3), 6"H , 9"H

Weight: 78 lbs.

Overall: 40.42"H x 25.24"D x 34.45" W

#### Features:

- Simple touchpad entry with key override
- 1-8 digits
- Operates on alkaline batteries
- User code is stored when battery power is lost or removed
- Audible low battery indicator
- Continuous alarm sounds when code is incorrectly entered four times
- Plastic top
- Accessory panels (3)
- Stabilizing frame with bumper
- Aluminum mounting tracks
- 18 colors available

**NOTE: No auto-locking features (control knob must be turned manually to lock and unlock). Carts require some assembly.**

# Aluminum Electronic Touchpad Wide Cart & ScopeSafe™

ELECTRONIC TOUCHPAD LOCKING AND KEY-LOCKING



AKE-B-6

## Aluminum Electronic Touchpad Locking WIDE Cart

AKE-B-6 6-Drawer 30" Electronic Touchpad Locking Wide Cart, Beige

A-SMART® Wide Carts feature:

- Simple touchpad entry with key override
- 1-8 digits
- Operates on alkaline batteries
- User code is stored when battery power is lost or removed
- Audible low battery indicator
- Continuous alarm sounds when code is incorrectly entered four times
- Extra-wide drawers: 7" wider than standard cart drawers
- Seamless, one-piece plastic top
- Standard stabilizing frame with bumper
- 5" all-swivel casters (two locking, one tracking)
- Beige drawer fronts in beige frame
- Carts weigh 118 lbs.

**Dimensions:**

**Drawer sizes:** 3"H (3), 6"H (2), 9"H (1).

**Overall:** 45.73"H x 25.24"D x 40.70"W (includes bumper, handles, and casters).

**Drawer size:** 17<sup>1</sup>/<sub>16</sub>"D x 29<sup>1</sup>/<sub>4</sub>"W.

**Actual Top Dimensions:** 32<sup>1</sup>/<sub>2</sub>"W x 17"D

**NOTE:** No auto-locking features (control knob must be turned manually to lock and unlock). Carts require some assembly.

A-SMART WIDE CART SYSTEMS ACCEPT ALL THE ACCESSORIES THAT FIT ON THE SIDES OF OUR STANDARD MOBILE WORKSTATIONS. SEE PAGES 44-55 FOR MORE OPTIONS.

*\* Please note for the Armstrong Electronic Touch Pad Carts, we suggest using alcohol only for cleaning the electronic keypad surface. Please completely dry keypad and surrounding area after alcohol application.*



ATR-9N

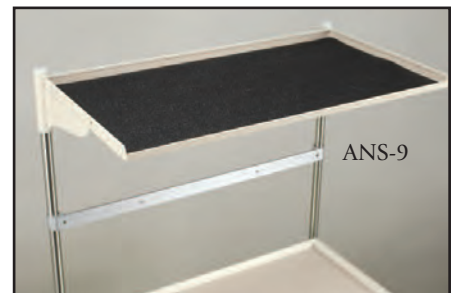
ATR-9N Wide Cart Trellis Rail System, \$210.00

ATR-9X Additional Wide Cart Hanging Bar, \$45.00

ANS-9 Narrow Shelf Unit for Wide Cart, \$355.00

Dim.: 10" x 34<sup>1</sup>/<sub>2</sub>". Adds up to 21" of height to cart.

Wt. capacity: 50 lbs.



ANS-9

## ScopeSafe™

**Key-Locking Storage for Delicate Scopes**

ASH-4 ScopeSafe™ Locking Scope Holder, \$880.00

- Holds four scopes
- Has a padded interior for cushioned protection
- Contains multiple vents for ample ventilation
- Contains a protective plexiglas door front
- Adjustable hooks and brackets
- Attaches easily to wall or cart
- Built with a durable steel frame
- Overall size: 48"H x 6"D x 16"W
- Weight: 44 lbs.

ASH-2 ScopeSafe™ Locking Scope Holder, \$720.00 (not pictured)

- Holds two scopes
- Same high-quality features as ASH-4
- Compact: 48"H x 6"D x 9"W
- Weight: 31 lbs.
- Adjustable hooks and brackets



ASH-4

*Takes two Accessory Panels to mount to a Premier Cart. Two ASH-2 ScopeSafes can be mounted to one side of a cart. **Not compatible with Mini or Narrow Carts.** Please note: ASH-2 and ASH-4 will not hold colonoscopes.*

# Aluminum Mini and Narrow Auto-Locking Carts

**AUTO-LOCKING**  
Not MRI Compatible

## Spacesavers

**That Give You The Added Benefit Of Controlled Security**

### 11 Designer Colors



SG - Sage Green



MG - Moss Grey



TC - Terra Cotta



AA - Deep Blue



B - Beige



BG - Blue Grey



HG - Hunter Green



T - Teal



Y - Yellow



CB - Taupe



CW - Cherry Woodgrain

### Aluminum 24" Auto-Locking Mini Cart (with Optional Factory Installed Proximity Reader)

AMC-4Color 5-Drawer 24" Auto-Locking Mini Cart  
PEL-PR Optional Proximity Reader

Overall: 34.60"H x 20.70"D x 21.40"W.

#### Features:

- Keyless Entry
- 11 colors available
- Lightweight aluminum construction
- Master code for all programming
- Access code for normal, daily use
- Up to 250 user codes possible
- Manual or automatic locking
- Auto-Lock Timer can be set from 1 to 998 minutes, or it can be shut off so that the cart never auto-locks

- Battery operated; never needs to be plugged into an outlet
- "Low Battery" indicator light
- Manual key override for emergency access

Simply wave the card in front of the reader to open. Lock the cart by pressing the lock button or set the Auto-Lock Timer for anywhere from 1 to 998 minutes. The Proximity Reader will read most low frequency HID® Prox Cards (125 kHz).

**\*Please note for the Armstrong PEL and WEL carts, we suggest using alcohol only for cleaning the electronic keypad surface. Please completely dry keypad and surrounding area after alcohol application.**



AMC-4SG  
with optional  
PEL-PR  
Prox Reader

AMC-6CB with optional  
PEL-PR Prox Reader,  
AGB-1 Glove Box Holder,  
and AWC-1 Waste  
Container and ATW-3  
Push Handles



### Aluminum 30" Auto-Locking Narrow Cart (with Optional Factory Installed Proximity Reader)

AMC-6Color Six-Drawer 30" Auto-Locking Narrow Cart  
PEL-PR Optional Proximity Reader

Overall: 43.40"H x 25.40"D x 25.30"W (includes bumper and casters).

#### Optional Factory Installed Proximity Reader

PEL-PR Proximity Reader

PEL-PC HID® Prox Card

PEL-PS Proximity Card Sticker (makes non-compatible prox cards compatible)

The Proximity Reader is a factory installed option on the Auto-Locking Carts only. This upgrade must be noted at the time of purchase. The Proximity Reader can not be retrofitted on existing carts. Electronic capabilities include all the features of the Auto-Locking Carts.

**NOTE: If you wish to use your current HID® cards, or purchase new cards or stickers, each card must be made available to be programmed individually into each cart.**

*Auto-Locking Cart Software, see page 15.*

*Auto-Locking Carts Not Sold Or Serviced Outside The Continental USA.*

# Steel Mini Carts

ELECTRONIC TOUCHPAD LOCKING AND KEY LOCKING



AMC-1SG-E

*\*Optional 5" Casters with Stabilizing Frame, call customer service.*



AMC-1B

## Spacesaver

### Steel Two-Tone Mini Carts

Ideal For Treatments, Procedures, & the Bedside. *Small enough to put under counters.*

### Steel Electronic Touchpad 5-Drawer Locking Mini Cart

AMC-1Color-E 5 Drawer 24" Electronic Touchpad Locking Mini Cart

Compact, five-drawer beige shell Mini Carts include a plastic top, ball bearing drawer slides, corner bumper guards, and 3" swivel casters\* (two locking, one tracking). Mini Carts also features colored drawer fronts in a beige frame.

**Overall:** 35.07"H x 20.61"D x 21.35"W.

**Drawer size:** 17"D x 15"W.

**Drawer heights:** 3"H (3), 6"H, 9"H.

**Weight:** 103 lbs.

**Features:**

- Simple touchpad entry with key override

- 1-8 digits
- Operates on alkaline batteries
- User code is stored when battery power is lost or removed
- Audible low battery indicator
- Continuous alarm sounds when code is incorrectly entered four times
- Plastic top
- 11 colors available

**NOTE: No auto-locking features (control knob must be turned manually to lock and unlock). Carts require some assembly.**

### Steel Key Locking 5-Drawer Mini Cart

AMC-1Color 5-Drawer 24" Key Locking Mini Cart

**Overall:** 34.50"H x 20.40"D x 20.90"W.

**Drawer size:** 17"D x 15"W.

**Drawer heights:** 3"H (3), 6"H, 9"H.

**Weight:** 103 lbs.

### Steel 4-Drawer Electronic Touchpad Locking 21" Mini Cart

AMC-21Color-E 4-Drawer 21" Electronic Touchpad Locking Mini Cart

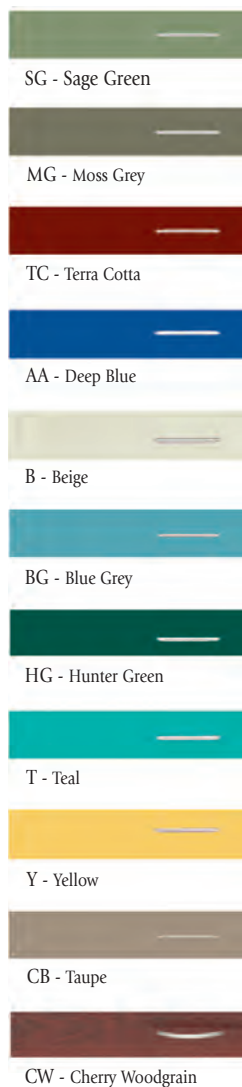
**Overall:** 32.12"H x 20.61"D x 21.35"W.



AMC-21CW-E

**Drawer size:** 17"D x 15"W.  
**Drawer heights:** 3"H (2), 6"H, 9"H.  
**Weight:** 85 lbs.

### 11 Designer Colors



# Aluminum Narrow Carts

ELECTRONIC TOUCHPAD LOCKING AND KEY LOCKING  
Not MRI Compatible

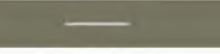
## Great For All Those Tight Spaces.

### Think *LIGHT*.

### 11 Designer Colors



SG - Sage Green



MG - Moss Grey



TC - Terra Cotta



AA - Deep Blue



B - Beige



BG - Blue Grey



HG - Hunter Green



T - Teal



Y - Yellow



CB - Taupe



CW - Cherry Woodgrain

## Aluminum 30" Key Locking Narrow Cart

### AMC-2Color 6-Drawer 30" Key Locking Narrow Cart

#### Features:

- Lightweight aluminum construction; weighs only 85 lbs.
- Stabilizing frame with bumper
- Four 5" swivel casters (two with brake and one tracking)
- Plastic top
- Eleven colors available
- Ball bearing drawer slides

#### Dimensions:

**Overall:** 43.40"H x 25.40"D x 25.30"W (includes bumper and casters).

**Drawer configuration:** 30" of total drawer height.

**Drawer size:** 17"D x 15"W.

**Drawer heights:** 3"H (3), 6"H (2), 9"H (1).

**Weight:** 90 lbs.



AMC-2HG

## Aluminum 30" Electronic Touchpad Locking Narrow Cart

### AMC-3Color-E 6-Drawer 30" Electronic Touchpad Locking Narrow Cart

*\*All features as listed above with AMC-2 including:*

#### Features:

- Simple touchpad entry with key override
- 1-8 digits
- Operates on alkaline batteries
- User code is stored when battery power is lost or removed
- Audible low battery indicator
- Continuous alarm sounds when code is incorrectly entered four times

#### Dimensions:

**Overall:** 43.81"H x 25.23"D x 24.68"W (includes bumper and casters).

**Drawer configuration:** 30" of total drawer height.

**Drawer size:** 17"D x 15"W.

**Drawer heights:** 3"H (3), 6"H (2), 9"H (1).

**Weight:** 90 lbs.



AMC-3BG-E

**NOTE:** No auto-locking features (control knob must be turned manually to lock and unlock). Carts require some assembly.

### Optional **MINI & NARROW** Cart Accessories

APH-1 Push Handle, \$65.00

MDM-1B Keyboard Drawer, \$130.00

Weight capacity: 30 lbs.

ATR-7N Three-rail Trellis System, \$195.00

AMT-4N Full Drawer Tray with Nine Ampule Dividers, Ampule Tray, Rail, and Four Adjustable Dividers, \$90.00 (Fits one per drawer), see page 52.

AMT-5N Full Drawer Tray with Two Rails and Four Adjustable Dividers, \$80.00 (Fits one per drawer), see page 52.

AEF-9M Plastic Divider Set for 9" Mini Cart Drawer, \$74.00  
Two 16<sup>3</sup>/<sub>8</sub>"L rails and four 14<sup>3</sup>/<sub>16</sub>"L x 8<sup>1</sup>/<sub>4</sub>"H dividers.

AEF-6M Plastic Divider Set for 6" Mini Cart Drawer, \$70.00  
Two 16<sup>3</sup>/<sub>8</sub>"L rails and four 14<sup>3</sup>/<sub>16</sub>"L x 5<sup>1</sup>/<sub>2</sub>"H dividers.

AEF-3M Plastic Divider Set for 3" Mini Cart Drawer, \$54.00  
Two 16<sup>3</sup>/<sub>8</sub>"L rails and four 14<sup>3</sup>/<sub>16</sub>"L x 2<sup>1</sup>/<sub>2</sub>"H dividers.

See pages 44-55 for more accessories.



# Broselow® Pediatric Resuscitation System

## Broselow® Pediatric Resuscitation System



### Broselow® Pediatric Resuscitation System

AE-4700 Broselow® Pediatric Resuscitation System, \$1,950.00

Includes twenty-eight size-specific procedural modules in seven pouches, flying carpet, Broselow® Pediatric Emergency Tape, and all other equipment shown at left. All contained in a heavy-duty ALS equipment organizer.

The Broselow® Pediatric Resuscitation System is approved for the PALS education program. For children 3 to 36 kg.

### **NEW** Broselow® Pediatric Emergency Tape “2019 Edition” mL units listed.

AE-4800 Broselow® Pediatric Emergency Tape, 5/pkg., \$120.00

The 2019 version of the Broselow Reference Tape will be compliant with the most current PALS Standards

- Pre-calculated doses in milligrams, as well as all doses in pre-calculated ml, making the entire process error free by removing the need for any calculations.
- The new tape will accommodate for obesity by allowing for a habitus adjustment if deemed appropriate to the tape weight estimation.

#### 1. Measure

Measure the child with the Broselow® Tape. This gives you an accurate weight estimate, equipment sizes, and drug dosages.

#### 2. Treat

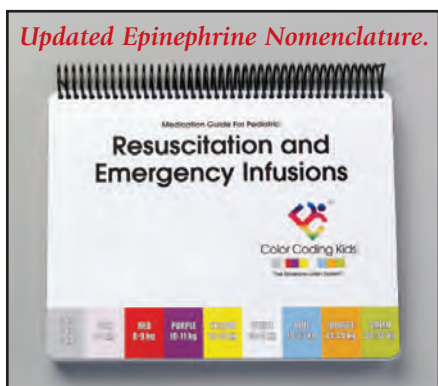
Reach into the bag for exactly the right equipment for I.V., intubation, O<sub>2</sub> delivery, or intraosseous access. There's no guessing.



**Updated Epinephrine Nomenclature.**

### **NEW** Broselow® Pediatric Resuscitation Medication/Infusion Guide “2019 Edition”

AE-4875 Broselow® Pediatric Resuscitation Medication/Infusion Guide, \$210.00



**Updated Epinephrine Nomenclature.**

This Resuscitation/Infusion Guide is designed to provide you a quick reference to common resuscitation I.V. push drugs and vasoactive infusion drugs. The guide is sectioned off in colors that correspond with the Broselow® Tape. The guide is also a solution for those who are trying to address The Joint Commission mandate to use standard concentration drugs for infusions and eliminate the use of “Rule of 6” methods of calculating infusions. The front section provides precalculated

milliliter amounts of the most common I.V. push drugs for resuscitation. The back section provides infusion rates based on standard concentrations of common vasoactive medications. This Guide acts to further enhance the Broselow Tape. The Broselow® Pediatric Emergency System helps to reduce cognitive overload sometimes associated with pediatric resuscitations, as well as reduces the potential for medication mistakes due to calculation errors.

### **STOCK YOUR CART**

Fill the drawers with the Broselow® Pediatric Resuscitation System, size-specific pediatric equipment for a complete resuscitation system.

**AE-4712 Procedural Modules, \$975.00**

A complete set of twenty-eight modules for the seven Broselow® Color Packs or the Broselow® ColorCode™ Cart.

Modules for Intraosseous Access, O<sub>2</sub> Delivery, Intubation, and I.V. Delivery.

**AE-4703 Equipment Pack, \$695.00**

Contains all the equipment that comes in the original Broselow® bag: two disposable manual resuscitators, four cuff masks, three disposable blood pressure cuffs, one gauge, two Magill forceps, and two Vital View II™ LED fiber optic laryngoscope handles.

# Premier™ Aluminum Broselow® ColorCode™ Cart

BREAKAWAY LOCKING  
Not MRI Compatible

*Use in conjunction with your  
Broselow® Pediatric Resuscitation System.*

## Aluminum Cart Features:

- Ball bearing drawer slides
- Slide-thru side shelf
- Plastic top
- Soft-grip handles (2)
- Accessory panels (3)
- Stabilizing frame with bumper
- Locking casters (2)
- Swivel caster
- Tracking caster
- Breakaway locking bar (length of bar is equal to total drawer space)
- Aluminum mounting tracks



PBR-3 Three-inch Breakaway Locking Bar, \$45.00

PBR-6 Six-inch Breakaway Locking Bar, \$45.00

Alternative locking options help simplify inventory or limit access to sensitive materials. See page 42 for more locking options.



PBL-PC-9



Use OPTIONAL 3" drawer locks so that only the accessed drawers need restocking.

PBL-PC-9 shown with OPTIONAL Accessory Package PC-9E:

Includes AOB-1 Oxygen Tank Bracket, ASU-1 Suction Unit Holder, PIV-1 IV Pole, PCB-1 Cardiac Board (not shown), PBR-3 (8) 3" Breakaway Locking Bar, PBR-6 (1) 6" Breakaway Locking Bar, and APS-5 Plastic Seals. Also shown, AE-4800 Broselow® Pediatric Emergency Tape (sold separately).

PBL-PC-9 BASIC A-SMART® Premier™ Broselow® ColorCode™ Cart (pictured left)

Includes Nine-Drawer A-SMART Premier Breakaway Lock Cart (30" total drawer space), slide-thru side shelf, 30" locking bar, stabilizing frame/bumper system, seamless plastic top, soft-grip push handles, three accessory attachment panels, and all-swivel casters (two locking and one tracking).

PBL-PC-9A COMPLETE A-SMART Premier™ Broselow® ColorCode™ Cart System (not shown)

System includes PBL-PC-9 Basic ColorCode Cart, as well as AE-4712 Broselow® Procedural Modules, AE-4703 Broselow® Equipment Pack, and a Broselow® Pediatric Emergency Tape (see page 40).

Premier™ Emergency Packages, pages 27, 29

Cart Accessories, pages 44-55

# Premier™ Aluminum Locking Bars

## Restock Only The Accessed Drawers. Save Money. Save Time.

Don't waste money checking crash cart drawers that haven't even been opened. With A-SMART® Premier™ Carts, individual drawer seals can be arranged so that only the accessed drawers need to be checked for inventory, a small investment that pays off with every use.

- Double lock medication drawers
- Improve equipment security
- Ready for changing needs

When carts are shared by departments or personnel, A-SMART Premier's locking options allow each to be locked with a

separate key. Never wonder about who else has access to your equipment.

Maybe you don't need this kind of flexibility now, but you might later. With A-SMART Premier, you can update your locking system at any time. Need to change a mobile workstation into a crash cart? No problem. Need to add a key lock to an existing cart? Done. Only A-SMART Premier offers you that kind of flexibility.

Locks may be placed on either corner glide for flexible security. **Double locking** drawers can help control inventory and access.



### Breakaway Locking Bars

Mix lock sizes and types for precise inventory control.

Size	Prod#	Price
3"	PBR-3	\$45.00
6"	PBR-6	\$45.00
9"	PBR-9	\$45.00
15"	PBR-15	\$45.00
21"	PBR-21	\$45.00
24"	PBR-24	\$45.00
27"	PBR-27	\$45.00
30"	PBR-30	\$45.00

### Key Locking Bars

Different sized locking bars help control access.

Size	Prod#	Price
3"	PKE-3	\$65.00
6"	PKE-6	\$65.00
9"	PKE-9	\$65.00
24"	PKE-24	\$75.00
27"	PKE-27	\$75.00
30"	PKE-30	\$75.00

### Drawer Specific

Drawer-specific locks simplify inventory, saving money in restocking time.



Look for the Armstrong A-SMART® label on every cart. **It stands for quality.**  
**MADE IN THE USA**

# Two-Tone Aluminum & Steel Isolation Carts

KEY LOCKING & BREAKAWAY LOCKING  
Not MRI Compatible

## Isolation Carts



AKL-Y-400IP

### AKL-Y-400IP STANDARD Steel Key Locking 4-Drawer 30" Isolation Cart Package

Includes AKL-Y-4 Four-Drawer Cart, PSR-1 Tubular Railing, APT-2 Plastic Top, AUH-1 Utility Hooks, and ACR-1 Coat Rack.

**Drawers:** 3"H, 9"H (3)

**Overall (cart only):** 45.40"H x 25.40"D x 34.15"W (includes bumper, handles, and casters).



PKL-Y-4

### PKL-Y-4 Basic PREMIER™ Aluminum Key Locking 4-Drawer 30" Isolation Cart

### PBL-Y-4 Basic PREMIER™ Aluminum Breakaway Locking 4-Drawer 30" Isolation Cart

**Drawers:** 3"H, 9"H (3)

**Overall:** 46.05"H x 25.03"D x 34.05"W (includes bumper, handles, and casters).



AMC-1Y

### AMC-1Y 5-Drawer 24" Key Locking Steel Mini Cart

**Drawer size:** 17"D x 15"W.

**Drawer heights:** 3"H (3), 6"H, 9"H.

**Overall:** 34.50"H x 20.40"D x 20.90"W.

**Weight:** 103 lbs.



AMC-2Y

### AMC-2Y 6-Drawer 30" Key Locking Aluminum Narrow Cart

**Drawer size:** 17"D x 15"W.

**Drawer heights:** 3"H (3), 6"H (2), 9"H (1).

**Overall:** 43.40"H x 25.40"D x 25.30"W (includes bumper and casters).

**Weight:** 90 lbs.



AKL-Y-4

### AKL-Y-4 Basic STANDARD Steel Key Locking 4-Drawer 30" Isolation Cart

**Drawers:** 3"H, 9"H (3)

**Overall:** 45.40"H x 25.40"D x 34.15"W (includes bumper, handles, and casters).



ABL-Y-3

### ABL-Y-3 Basic STANDARD Steel Breakaway Locking 3-Drawer 24" Isolation Cart

**Drawers:** 6"H, 9"H (2)

**Overall:** 38.90"H x 25.40"D x 34.25"W (includes bumper, handles, and casters).

## Come Visit Our Website

[www.armstrongmedical.com](http://www.armstrongmedical.com)

# Our A-Smart® Cart Systems

The world's most dependable  
medical cart solutions.



### Featured Products For:

Emergency Dept  
Anesthesia/PACU  
Nursing Education

Respiratory Care  
EMS  
Intensive Care Units

Operating Rooms  
Outpatient Care Areas

Prices and products are subject to change without notice.

©Copyright 2019 Armstrong Medical Industries, Inc. All rights reserved.